

KIC 011904669

Q1-17 DR25 TCE Parameters

TCE	Run Type	KOI?	Period (Days)	Epoch (BKJD)	Depth (ppm)	Duration (Hours)	MES	SNR	R_{\star} (R_{\odot})	T_{\star} (K)	R_p (R_{\oplus})	S_p (S_{\oplus})
011904669-01	OBS	No	455.354826	209.426578	406.1	5.856	7.7	6.8	0.90	5364	2.02	0.52

Robovetter Results

TCE	Run Type	Disp	Score	N	S	C	E	Comments
011904669-01	OBS	FP	0.00	1	0	0	0	INDIV_TRANS_CHASES—MOD_NONUNIQ_ALT—INCONSISTENT_TRANS—CENT_FEW_DIFFS

Notes: OBS = Observed. INJ = Injected. INV = Inverted. SCR = Scrambled.

N = Not Transit-Like. S = Stellar Eclipse. C = Centroid Offset. E = Ephemeris Match.

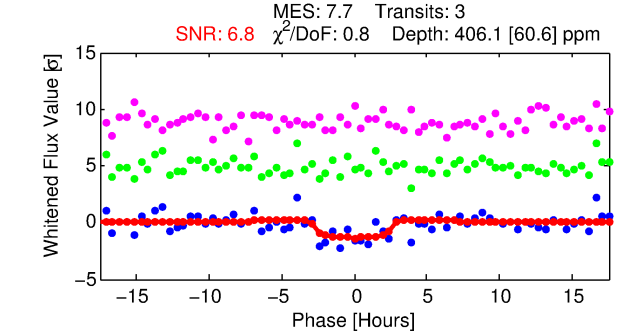
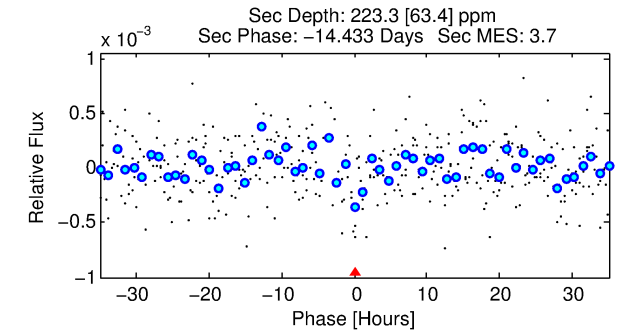
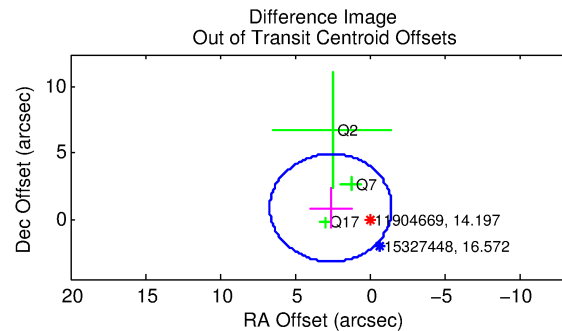
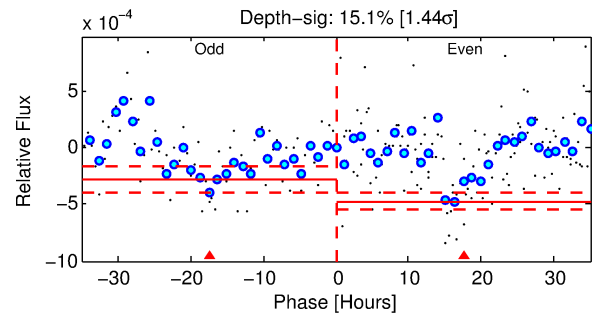
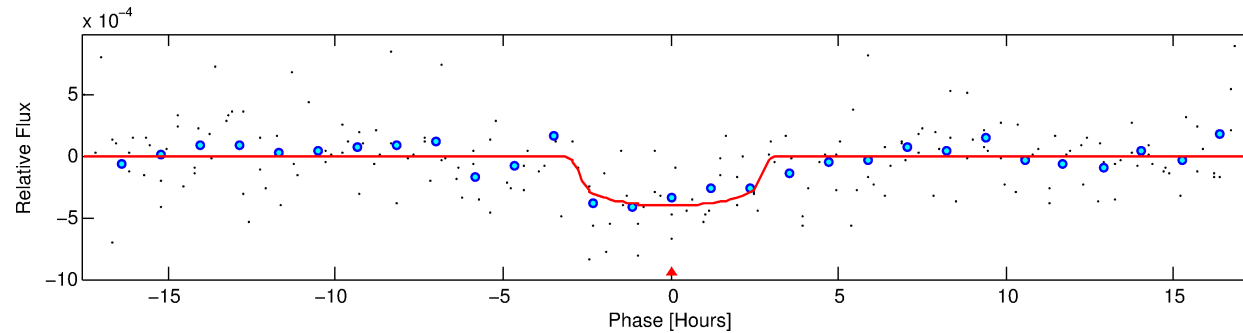
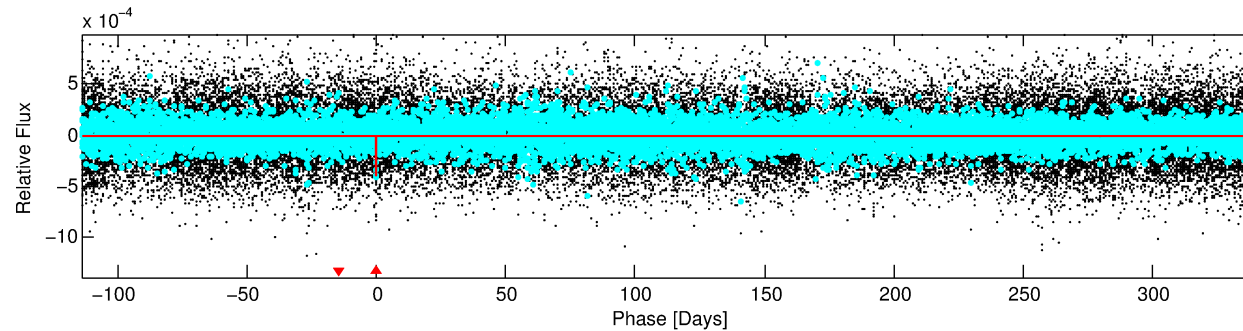
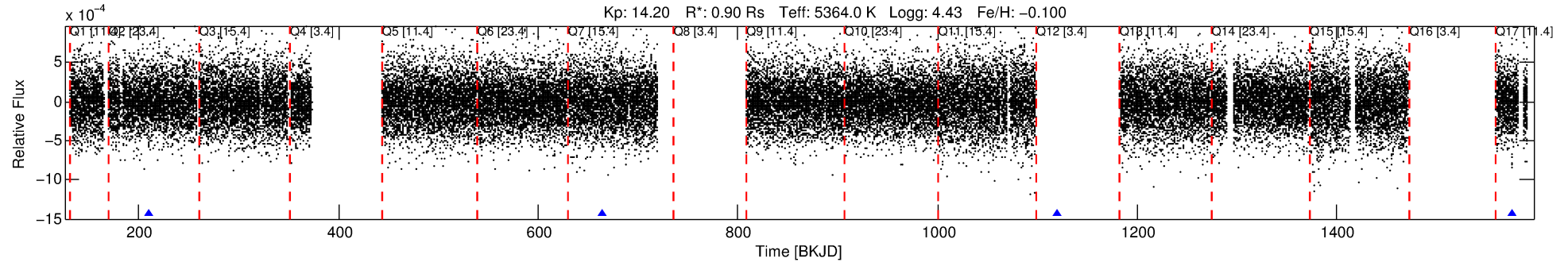
See http://exoplanetarchive.ipac.caltech.edu/docs/API_kepcandidate_columns.html#proj_disp_col for comment definitions.

Ephemeris Match Information For 011904669-01

No Significant Match Found

DV One-Page Summary

KIC: 11904669 Candidate: 1 of 1 Period: 455.355 d



DV Fit Results:

Period = 455.35483 [0.00714] d
Epoch = 209.4266 [0.0135] BKJD
Rp/R* = 0.0206 [0.0163]
a/R* = 377.72 [1190.37]
b = 0.80 [1.46]
Seff = 0.52 [0.18]
Teq = 216 [19] K
Rp = 2.02 [1.66] Re
a = 1.0767 [0.2214] AU
Ag = 34874.22 [57169.16] [0.61 σ]
Teffp = 4574 [1843] K [2.36 σ]

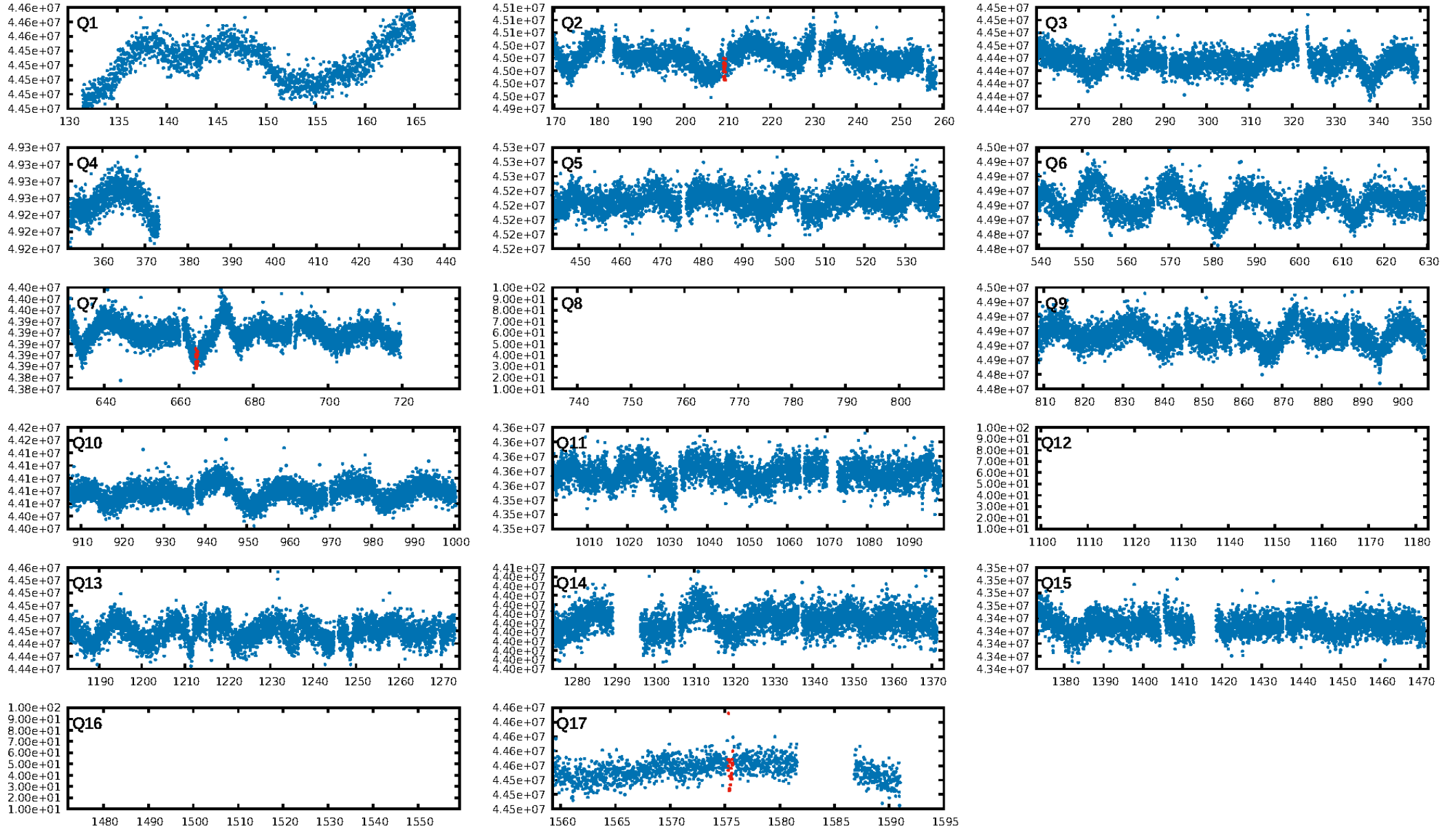
DV Diagnostic Results:

ShortPeriod-sig: N/A
LongPeriod-sig: N/A
ModelChiSquare2-sig: 54.3%
ModelChiSquareGof-sig: 99.8%
Bootstrap-pfa: 3.97e-10
RollingBand-fgt: 1.00 [2/2]
GhostDiagnostic-chr: -0.6034
Centroid-sig: 28.9%
Centroid-so: 2.437 arcsec [1.23 σ]
OotOffset-rm: 2.732 arcsec [2.01 σ]
OotOffset-st: 1/1/0/1 [3]
KicOffset-rm: 2.688 arcsec [1.98 σ]
KicOffset-st: 1/1/0/1 [3]
DiffImageQuality-fgm: 0.33 [1/3]
DiffImageOverlap-fno: 1.00 [3/3]

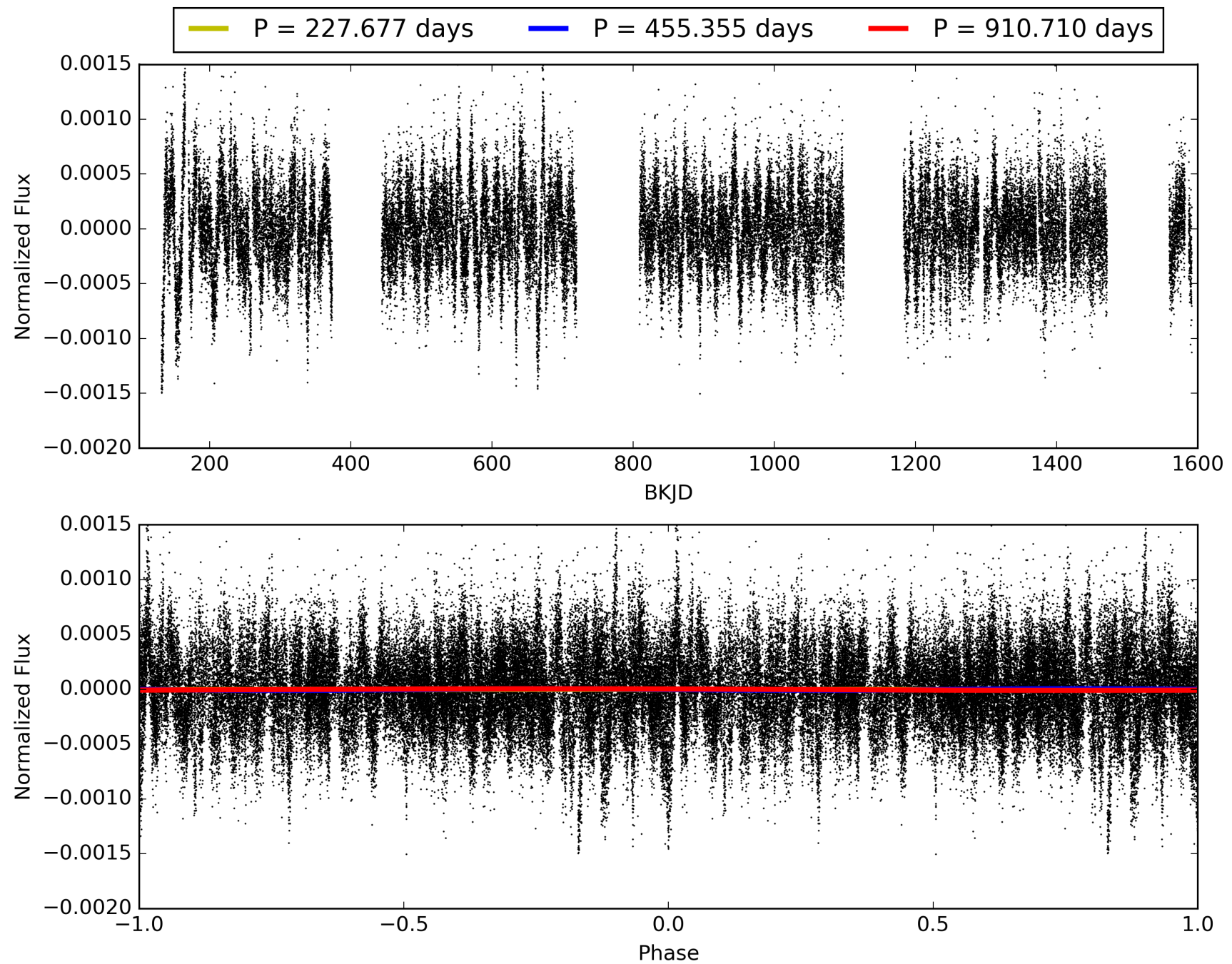
Software Revision: svn+ssh://murzim/repo/soc/tags/release/9.3.42@60958 -- Date Generated: 31-Jan-2016 22:00:52 Z

This Data Validation Report Summary was produced in the Kepler Science Operations Center Pipeline at NASA Ames Research Center

TCE 011904669-01, PDC Light Curves

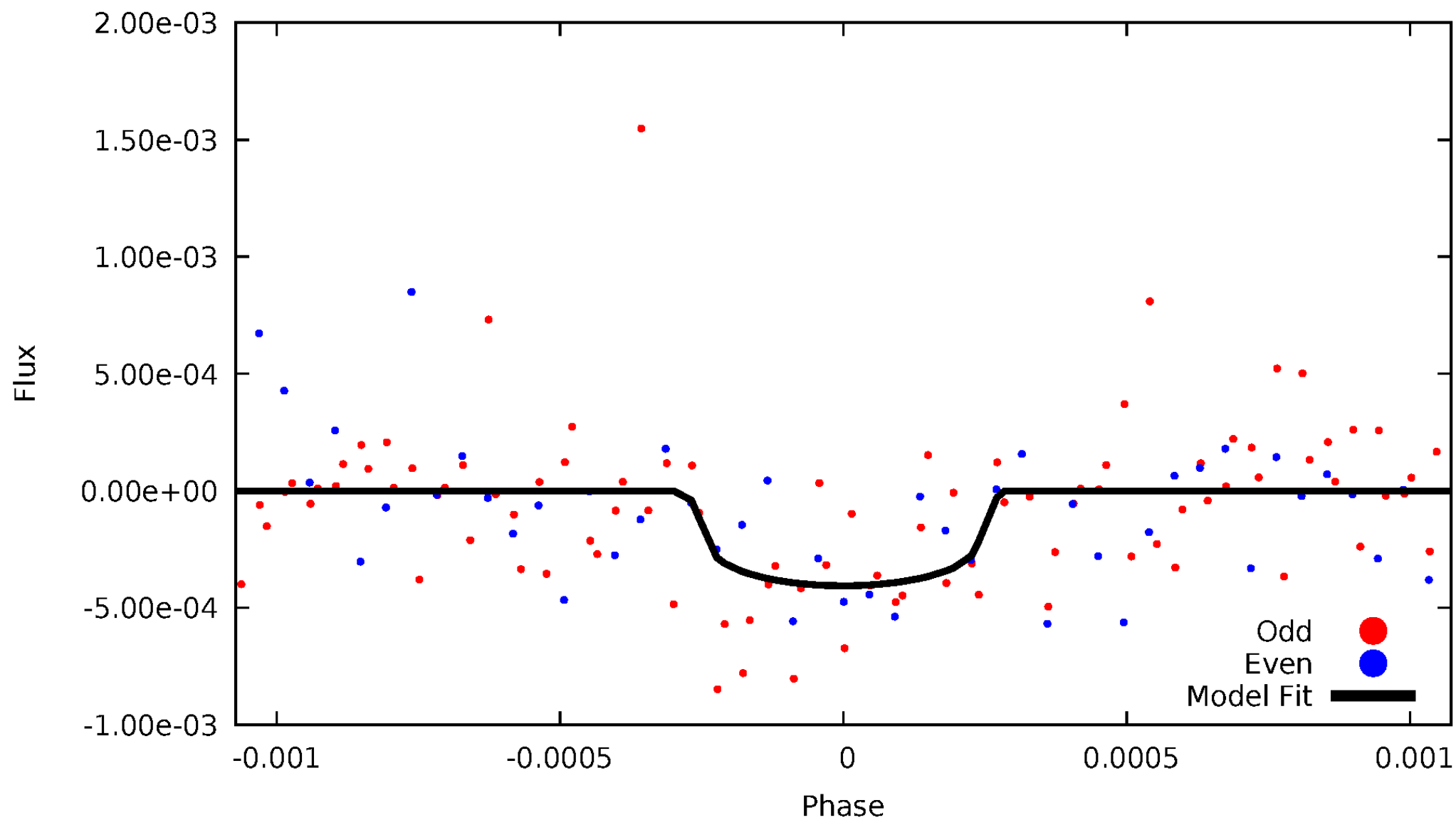


TCE 011904669-01



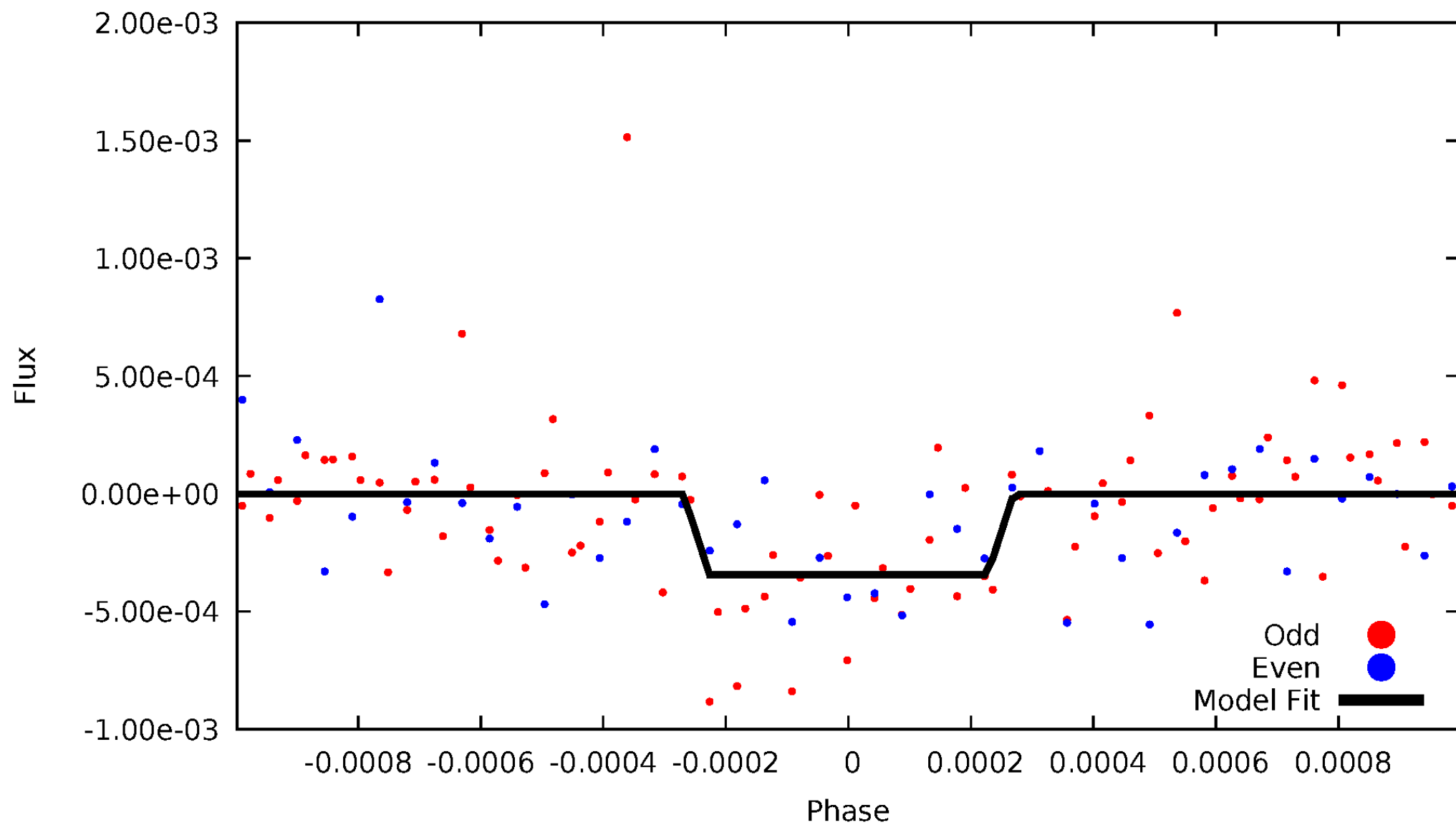
DV Odd/Even

TCE 011904669-01

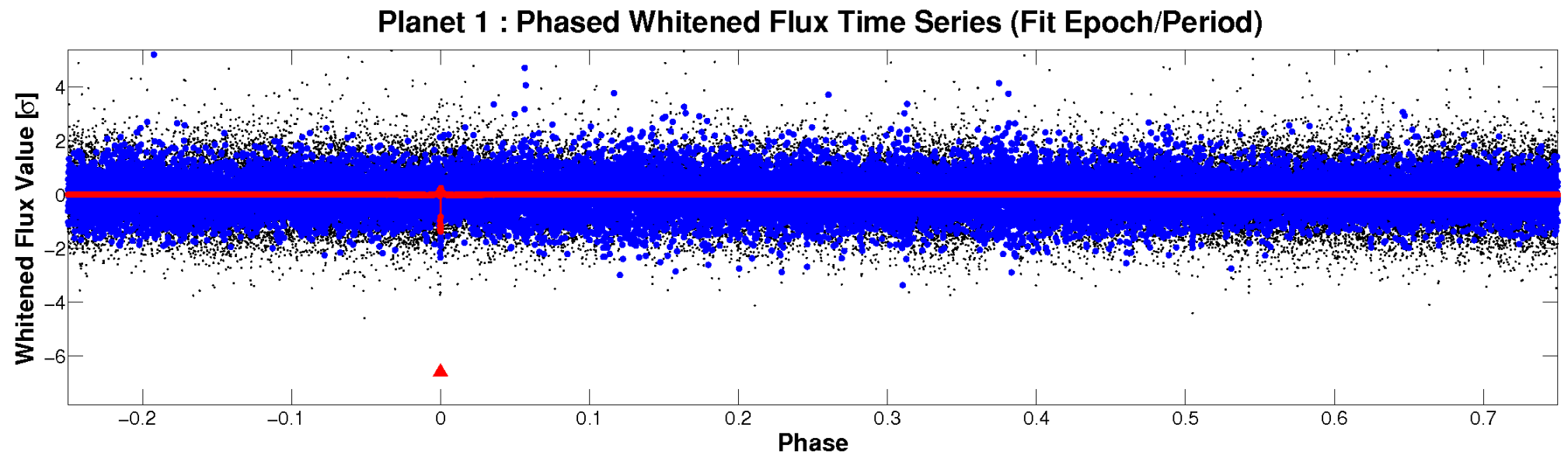
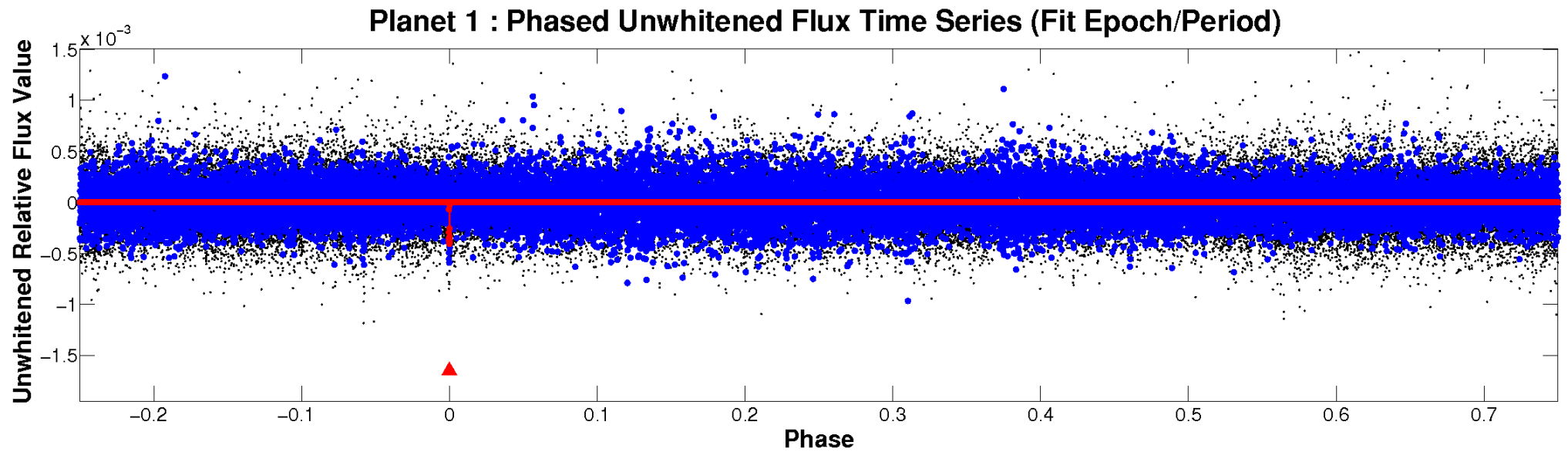


ALT Odd/Even

TCE 011904669-01

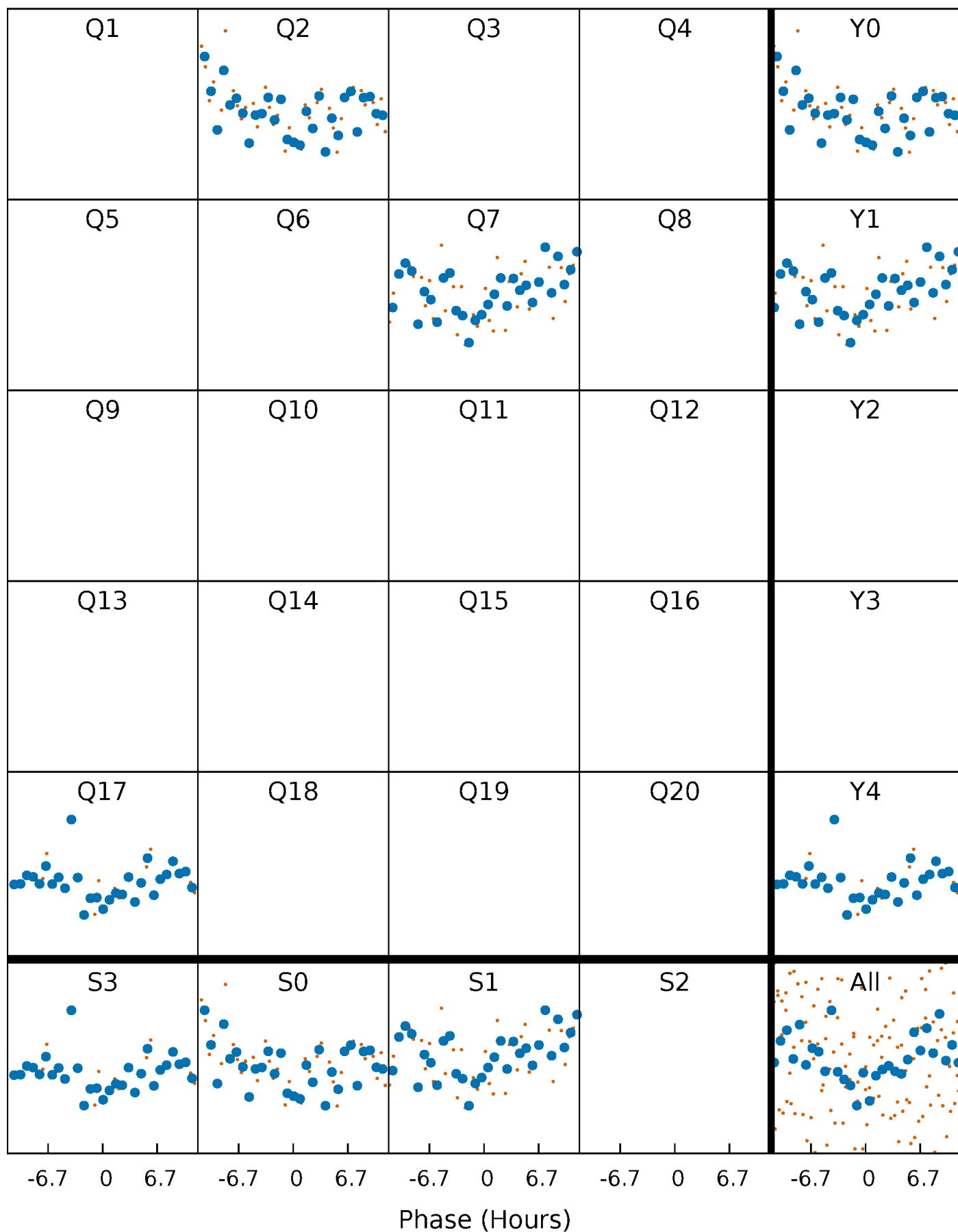


Non-Whitened Vs. Whitened Light Curve



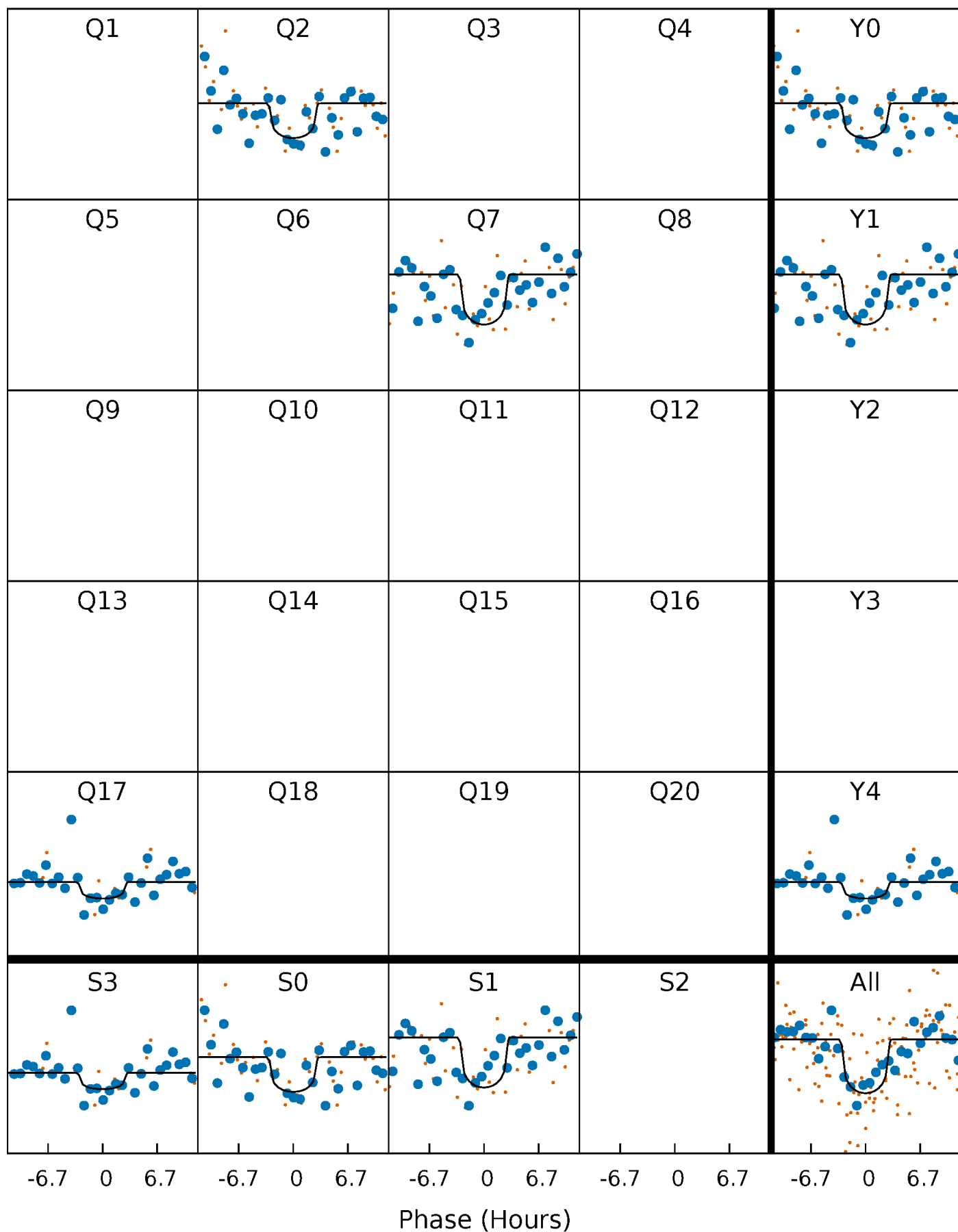
PDC Quarter-Phased Transit Curves

TCE 011904669-01 P=455.354826 Days $T_0=209.426578$ (BKJD)



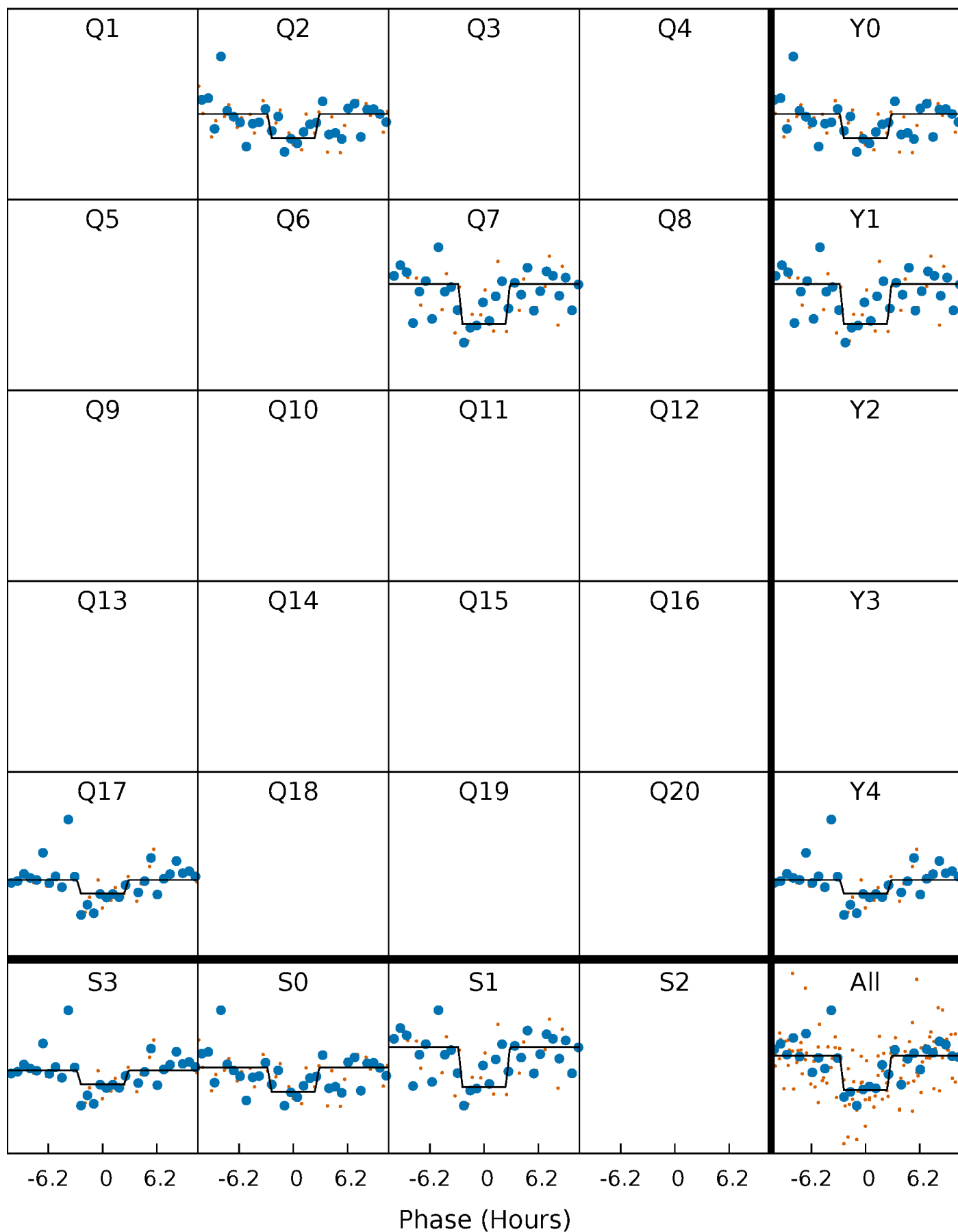
DV Quarter-Phased Transit Curves

TCE 011904669-01 P=455.354826 Days $T_0=209.426578$ (BKJD)



Alt. Detrend Quarter-Phased Transit Curves

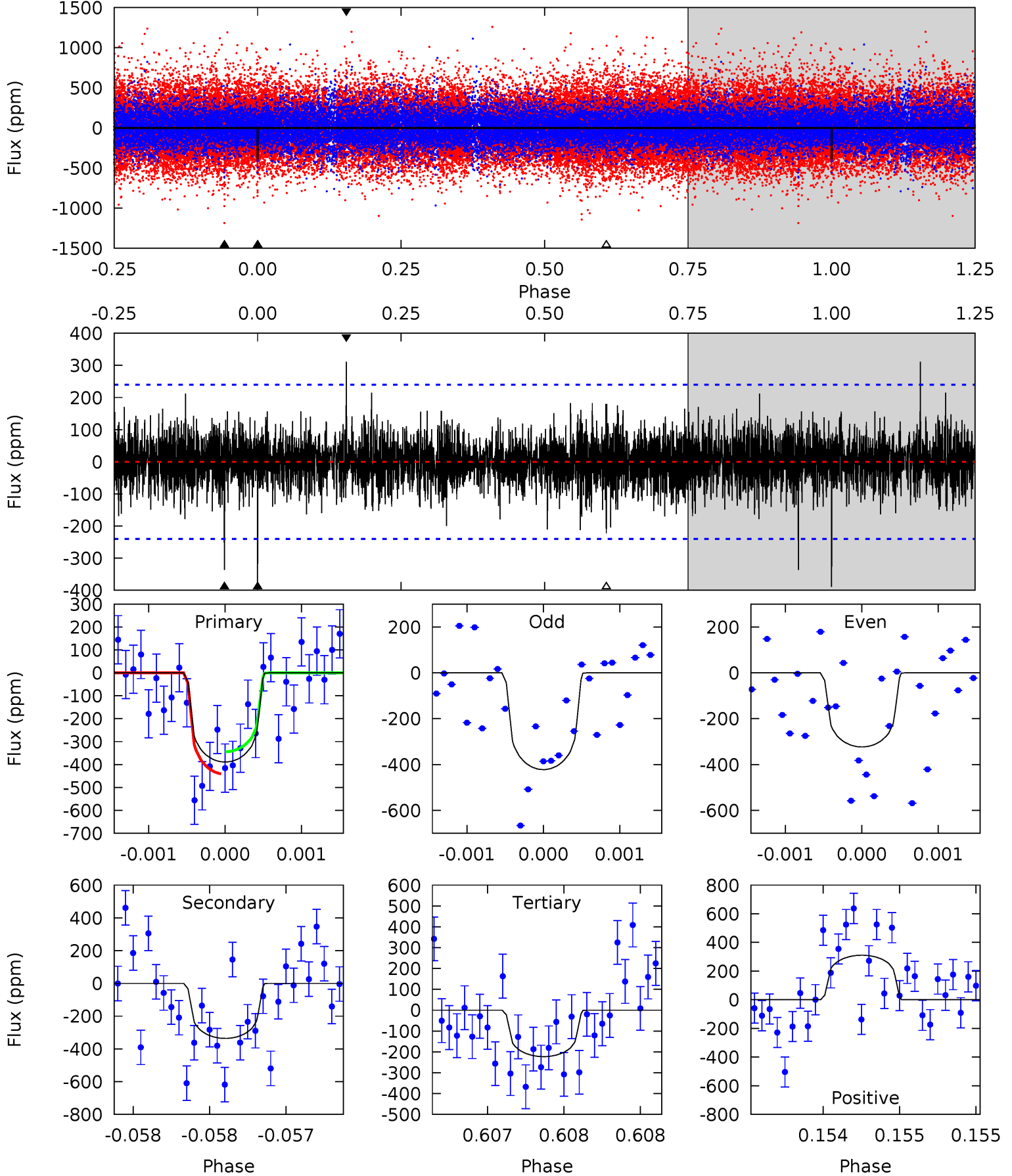
TCE 011904669-01 P=455.355073 Days $T_0=209.427834$ (BKJD)



DV Model-Shift Uniqueness Test

011904669-01, $P = 455.354826$ Days, $E = 209.426578$ Days

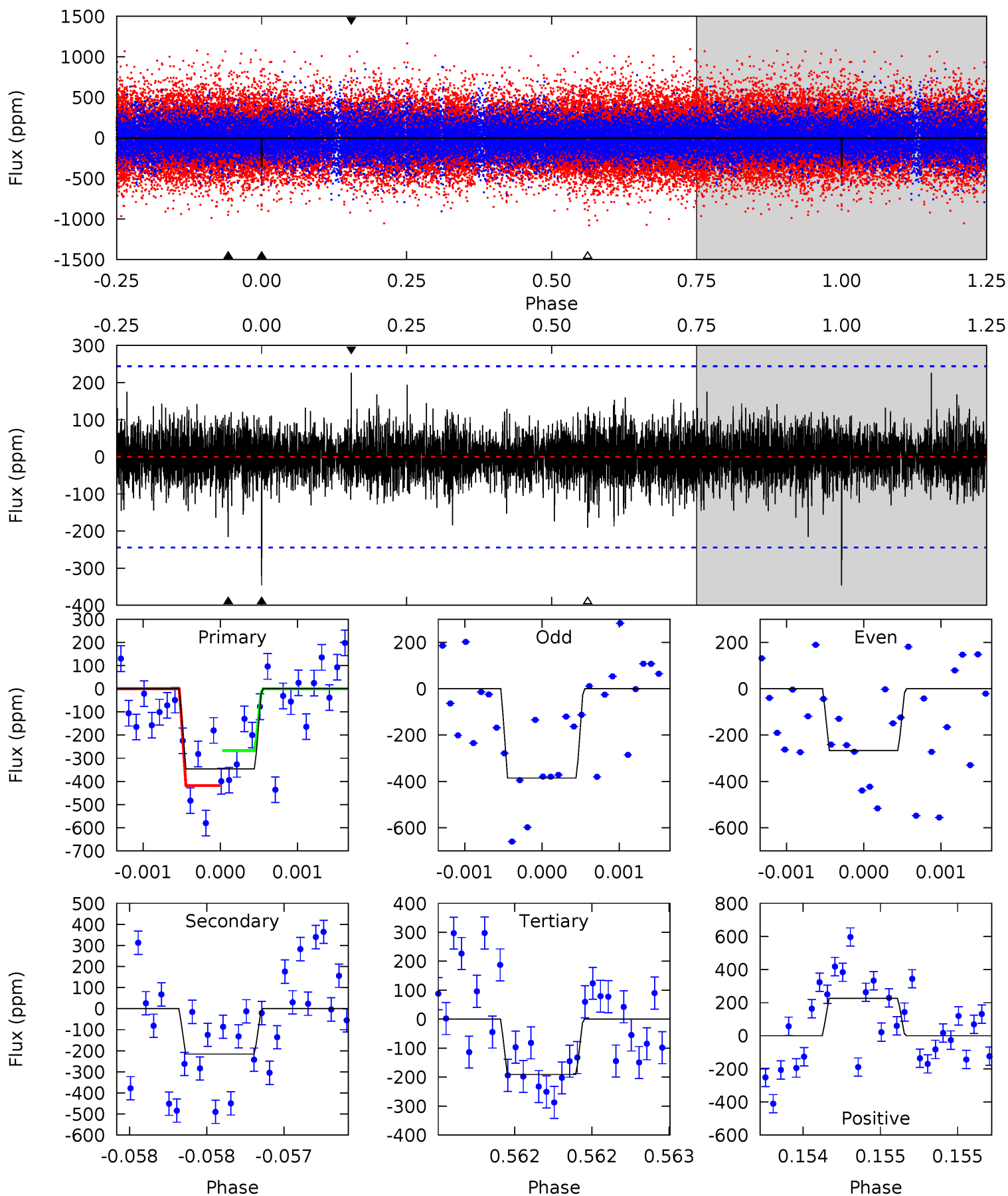
Pri	Sec	Ter	Pos	FA ₁	FA ₂	F _{Red}	Pri-Ter	Pri-Pos	Sec-Ter	Sec-Pos	Odd-Evn	DMM	Shape	TAT
9.02	7.79	5.16	7.20	5.56	3.45	1.30	3.86	1.82	2.62	0.58	1.08	1.17	0.44	1.11



Alt Model-Shift Uniqueness Test

011904669-01, P = 455.355073 Days, E = 209.427834 Days

Pri	Sec	Ter	Pos	FA ₁	FA ₂	F _{Red}	Pri-Ter	Pri-Pos	Sec-Ter	Sec-Pos	Odd-Evn	DMM	Shape	TAT
7.89	4.92	4.36	5.16	5.57	3.48	1.05	3.53	2.73	0.56	-0.24	1.30	1.29	0.40	1.73



Stellar Parameters For KIC 011904669

	$T_{\text{eff}}(K)$	$\log(g)$	[Fe/H]	R (R_{\odot})	M (M_{\odot})	p_{\star} ($\text{g}\cdot\text{cm}^{-3}$)
	5364^{+159}_{-143}	$4.433^{+0.136}_{-0.187}$	$-0.100^{+0.300}_{-0.300}$	$0.901^{+0.199}_{-0.126}$	$0.803^{+0.115}_{-0.067}$	$1.544^{+0.839}_{-0.740}$
	+3%/-3%	+3%/-4%	+300%/-300%	+22%/-14%	+14%/-8%	+54%/-48%
Source	PHO1	KIC0	KIC0	DSEP		

KIC = Kepler Input Catalog; PHO = Photometry; SPE = Spectroscopy; AST = Asteroseismology
 TRA = Transits; DESP = Dartmouth Models; MULT = Multiple Models

Secondary Eclipse Parameters for KIC 011904669-01 / KOI

Detrend	Depth (ppm)	R_p (R_{\oplus})	T_{max} (K)	T_{obs} (K)	A_{obs}
DV	-336 ± 43	$2.31^{+1.65}_{-1.45}$	304^{+19}_{-17}	4854^{+3126}_{-872}	$41497^{+251146}_{-27440}$
Alt.	-216 ± 44	$2.07^{+1.58}_{-1.22}$	304^{+21}_{-17}	4653^{+2332}_{-893}	$32162^{+163761}_{-21992}$

T_{max} = Theoretical Maximum Planetary Temperature

T_{obs} = Observed Planetary Temperature (Assuming $A=0.3$)

A_{obs} = Observed Albedo (Assuming $T=0$)

If a secondary eclipse is present, the system is likely an EB if $T_{obs} \gg T_{max}$ AND $A_{obs} \gg 1.0$

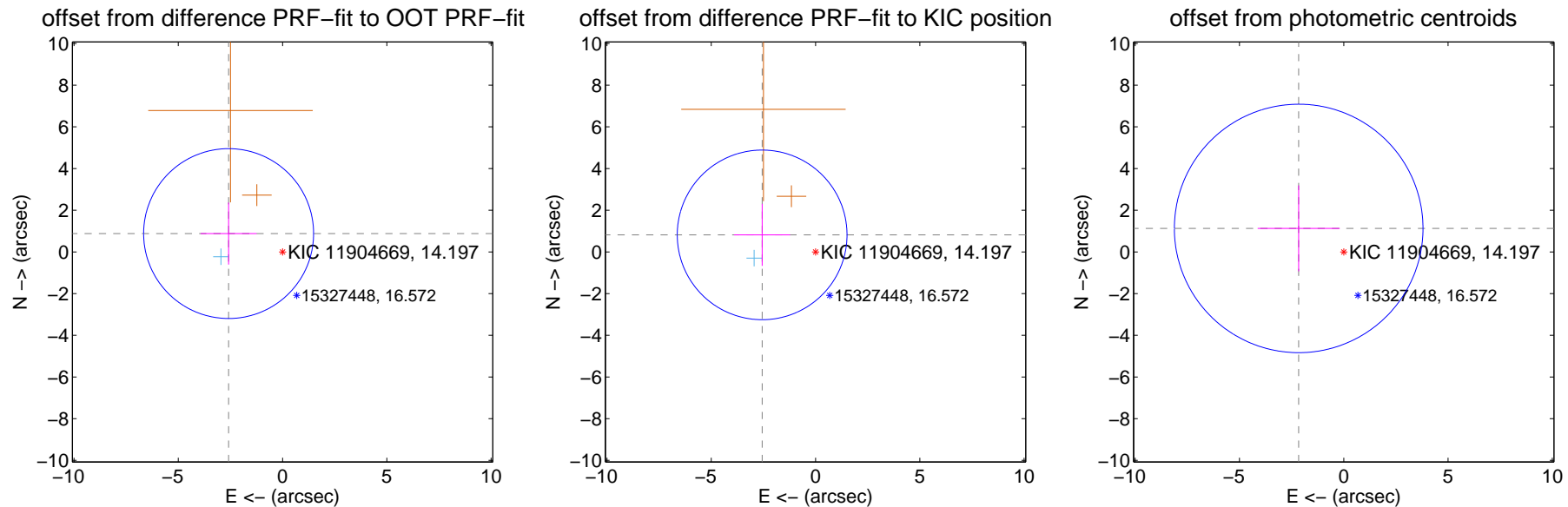
DV Centroid Data

Supplemental centroid analysis for 011904669-01. Kepler magnitude: 14.20. Transit SNR 6.76

There are 1 quarters with good PRF difference image offsets

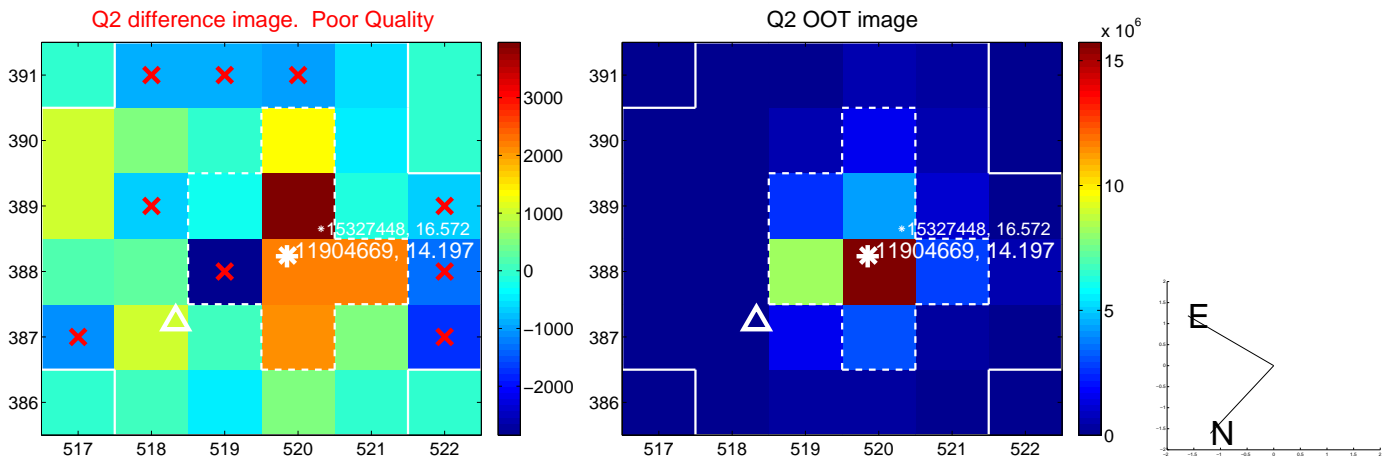
The direct PRF centroid is offset from the target star catalog position by about 0.07 arcsec

	Distance in arcsec	Distance / σ	Δ RA	Δ Dec
PRF-fit source offset from OOT	2.732 ± 1.358	2.01	2.586 ± 1.342	0.880 ± 1.487
PRF-fit source offset from KIC position	2.688 ± 1.356	1.98	2.561 ± 1.342	0.817 ± 1.487
photometric centroid source offset	2.44 ± 1.99	1.23	2.16 ± 1.97	1.13 ± 2.06

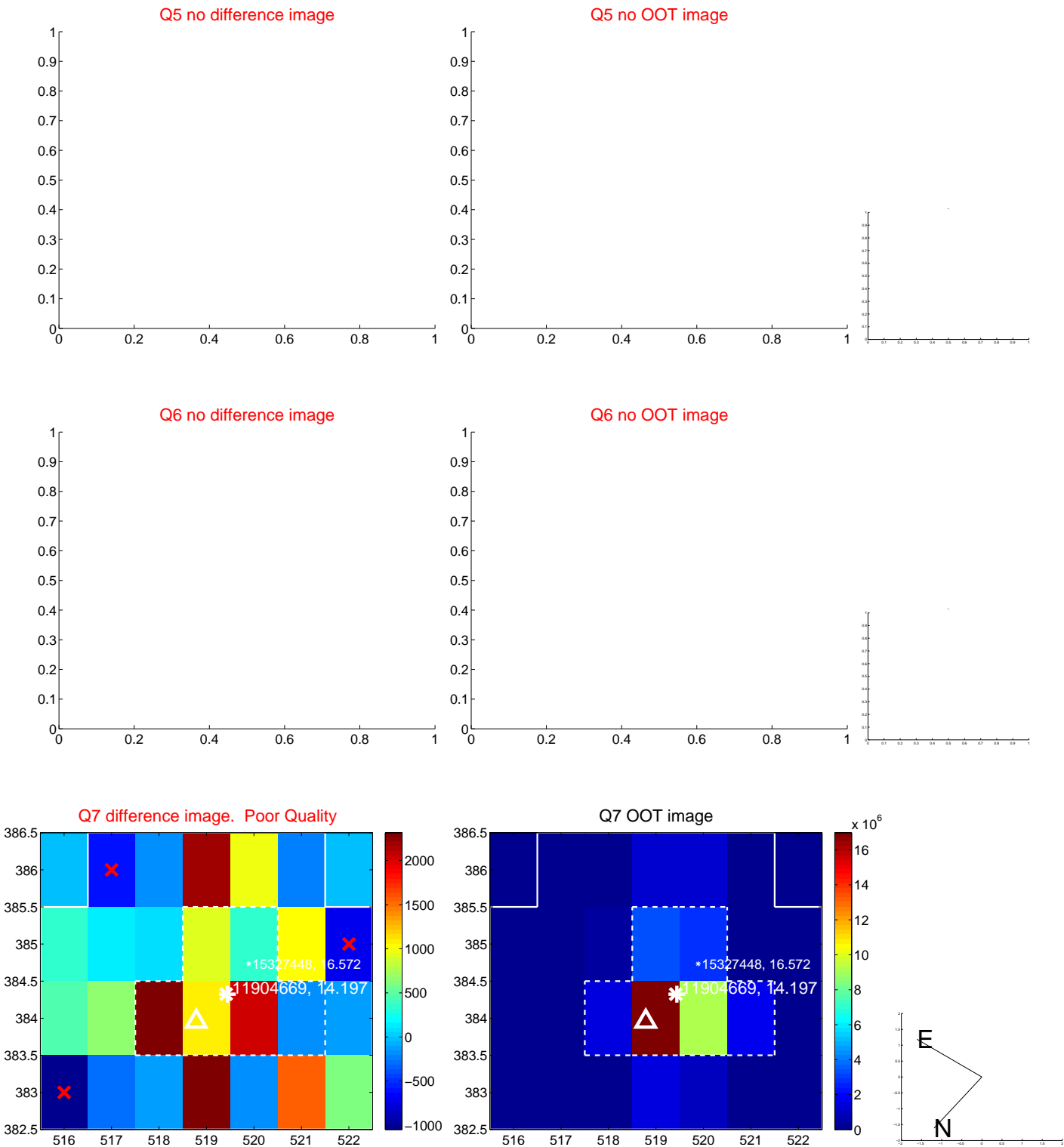


Centroid source offsets from the target star reconstructed from PRF and photometric centroids. Sky blue crosses: good quarterly centroid offsets; Vermillion crosses: bad quarterly centroid offsets; magenta cross: average over quarters. Length of the crosses: one- σ uncertainty. Blue circle: three- σ . Red *: target star. Blue *: Other stars. Text next to a star gives its KIC ID and kepmag. KIC IDs > 15,000,000 are from the UKIRT catalog.

white \times : KIC target position; $+$: OOT centroid; \triangle : difference centroid. red \times : large negative pixel value



white \times : KIC target position; $+$: OOT centroid; Δ : difference centroid. red \times : large negative pixel value.



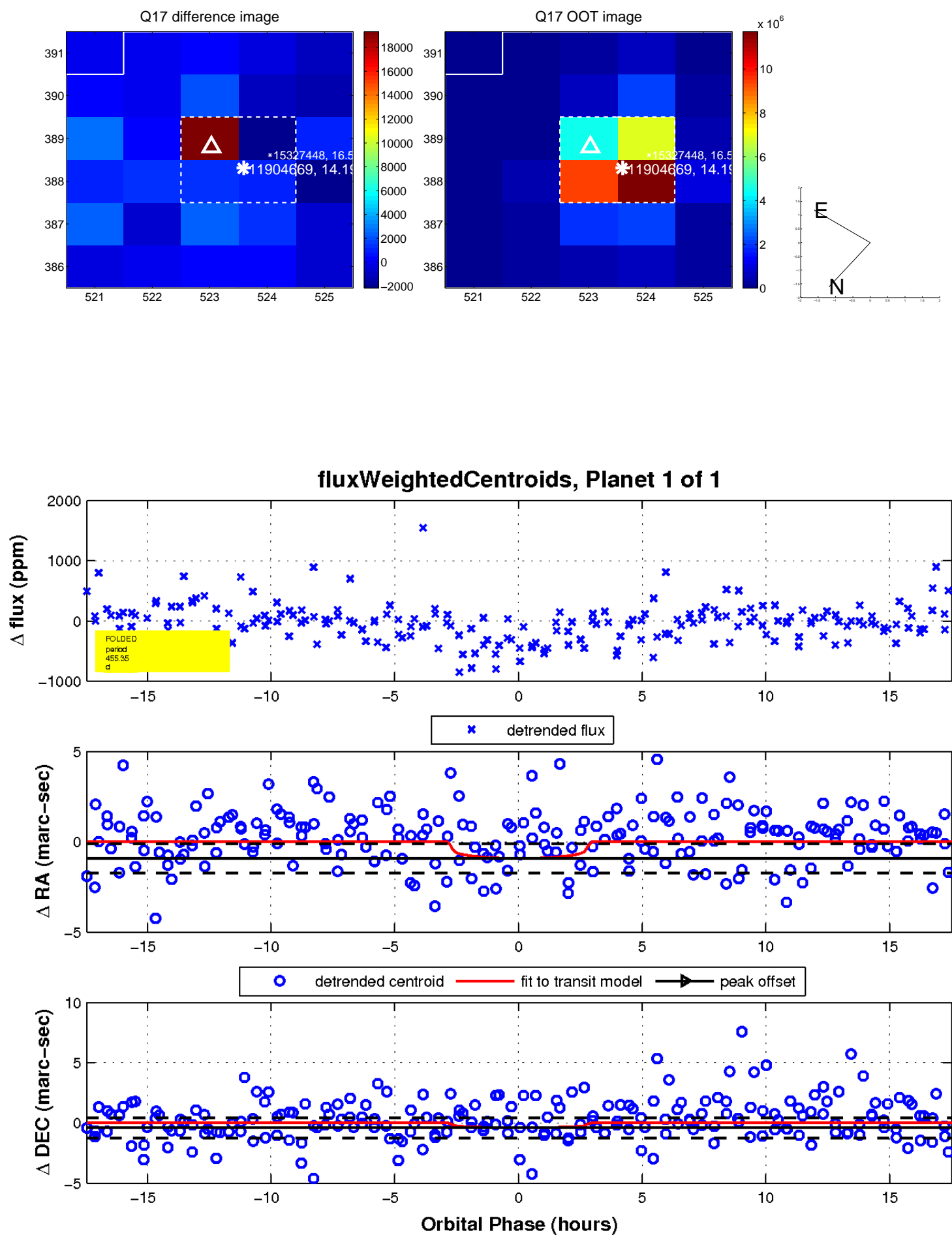
white \times : KIC target position; $+$: OOT centroid; \triangle : difference centroid. red \times : large negative pixel value.



white \times : KIC target position; $+$: OOT centroid; \triangle : difference centroid. red \times : large negative pixel value.



white \times : KIC target position; $+$: OOT centroid; \triangle : difference centroid. red \times : large negative pixel value.



UKIRT Image

Declination

