

KIC 011721744

Q1-17 DR25 TCE Parameters

TCE	Run Type	KOI?	Period (Days)	Epoch (BKJD)	Depth (ppm)	Duration (Hours)	MES	SNR	R_{\star} (R_{\odot})	T_{\star} (K)	R_p (R_{\oplus})	S_p (S_{\oplus})
011721744-01	OBS	No	516.091145	153.199130	695.8	5.827	7.3	7.6	0.91	5918	2.86	0.59

Robovetter Results

TCE	Run Type	Disp	Score	N	S	C	E	Comments
011721744-01	OBS	FP	0.00	1	0	0	0	INDIV_TRANS_CHASES—ALL_TRANS_CHASES—CENT_FEW_DIFFS

Notes: OBS = Observed. INJ = Injected. INV = Inverted. SCR = Scrambled.

N = Not Transit-Like. S = Stellar Eclipse. C = Centroid Offset. E = Ephemeris Match.

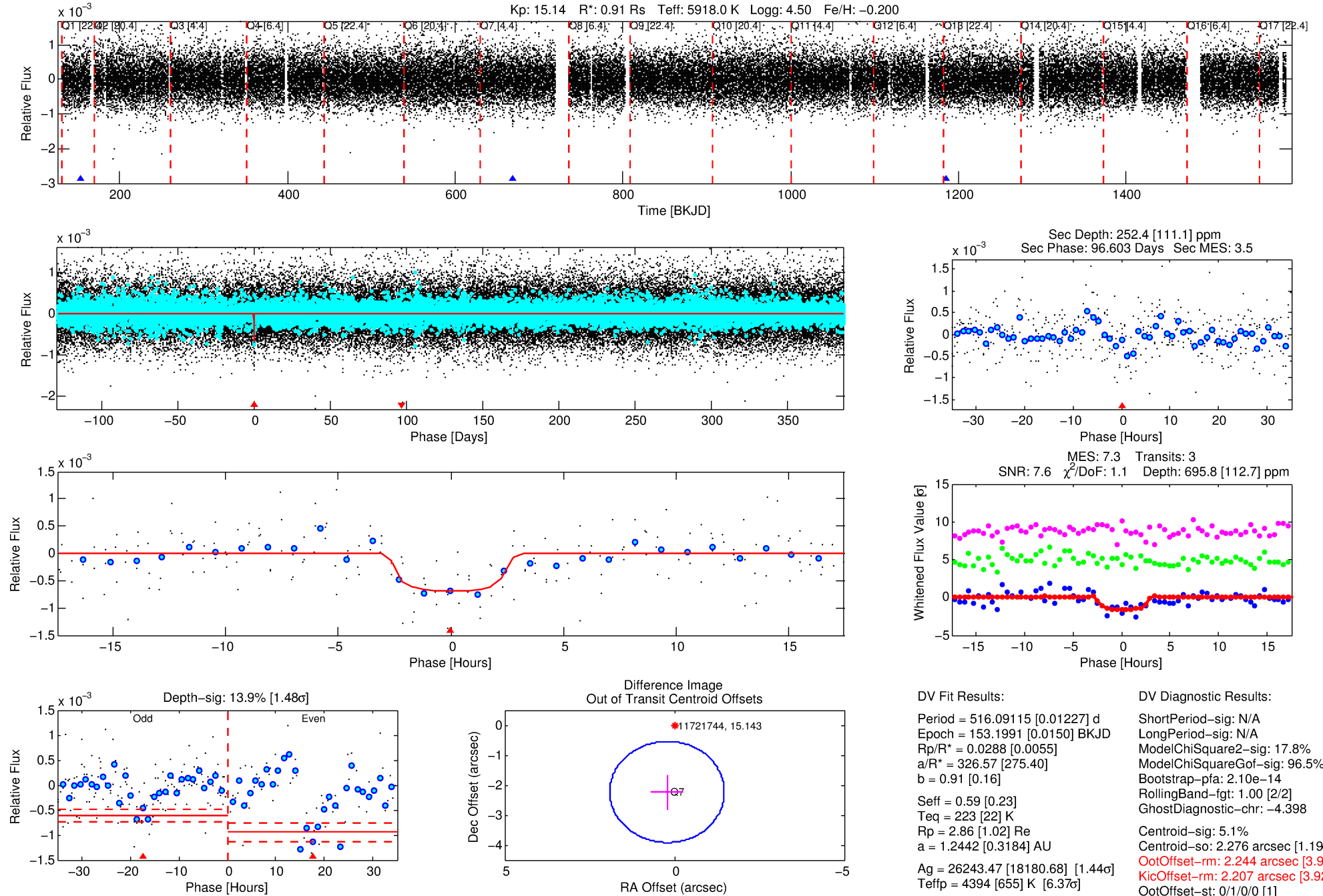
See http://exoplanetarchive.ipac.caltech.edu/docs/API_kepcandidate_columns.html#proj_disp_col for comment definitions.

Ephemeris Match Information For 011721744-01

No Significant Match Found

DV One-Page Summary

KIC: 11721744 Candidate: 1 of 1 Period: 516.091 d



DV Fit Results:

Period = 516.09115 [0.01227] d
Epoch = 153.1991 [0.0150] BKJD
Rp/R* = 0.0288 [0.0055]
a/R* = 326.57 [275.40]
b = 0.91 [0.16]
Seff = 0.59 [0.23]
Teq = 223 [22] K
Rp = 2.86 [1.02] Re
a = 1.2442 [0.3184] AU
Ag = 26243.47 [18180.68] [1.44 σ]
Teff = 4394 [655] K [6.37 σ]

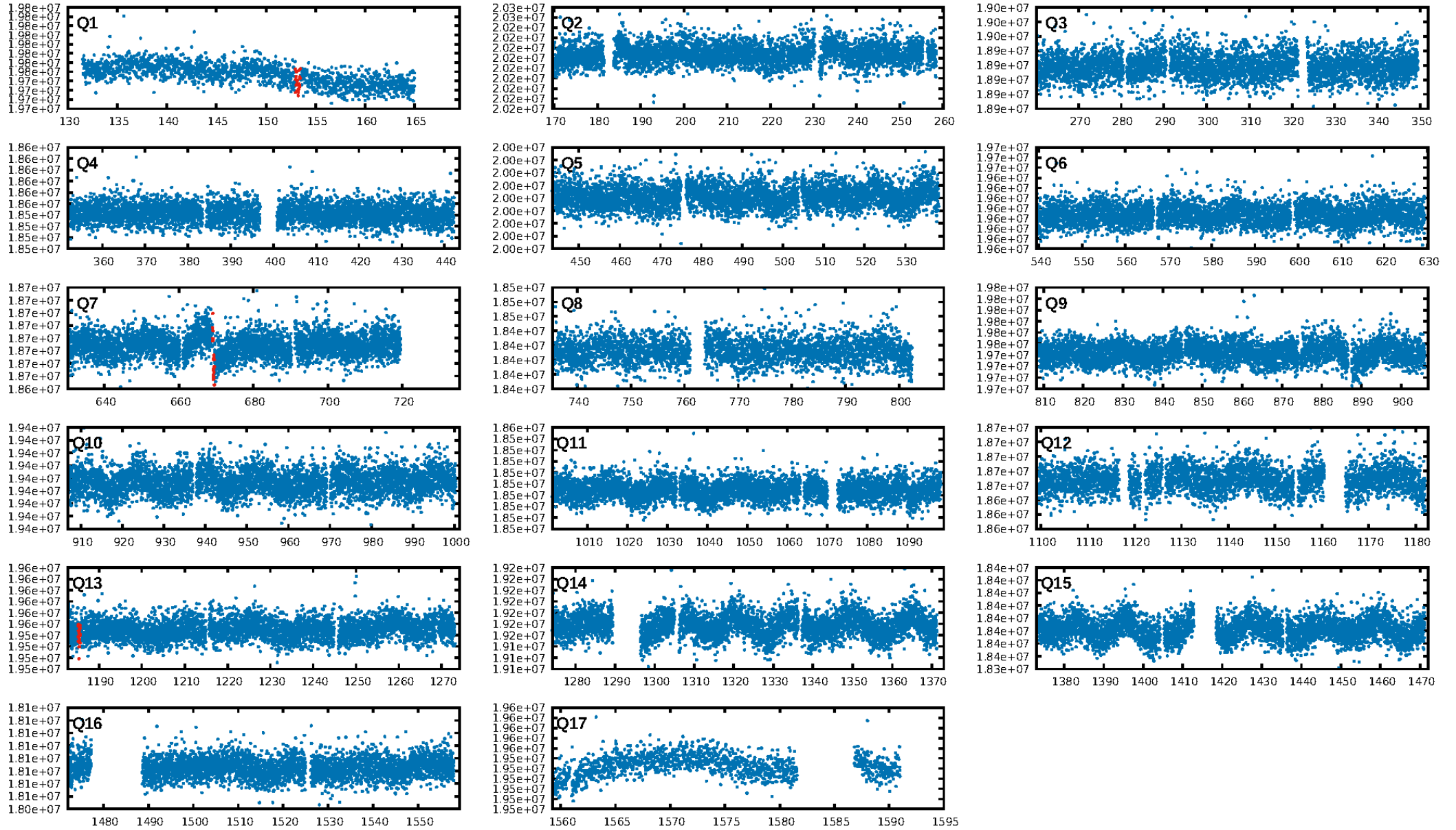
DV Diagnostic Results:

ShortPeriod-sig: N/A
LongPeriod-sig: N/A
ModelChiSquare2-sig: 17.8%
ModelChiSquareGof-sig: 96.5%
Bootstrap-pfa: 2.10e-14
RollingBand-fgt: 1.00 [2/2]
GhostDiagnostic-chr: -4.398
Centroid-sig: 5.1%
Centroid-so: 2.276 arcsec [1.19 σ]
OotOffset-rm: 2.244 arcsec [3.99 σ]
KicOffset-rm: 2.207 arcsec [3.92 σ]
OotOffset-st: 0/1/0/0 [1]
KicOffset-st: 0/1/0/0 [1]
DiffImageQuality-fgm: 1.00 [1/1]
DiffImageOverlap-fno: 1.00 [2/2]

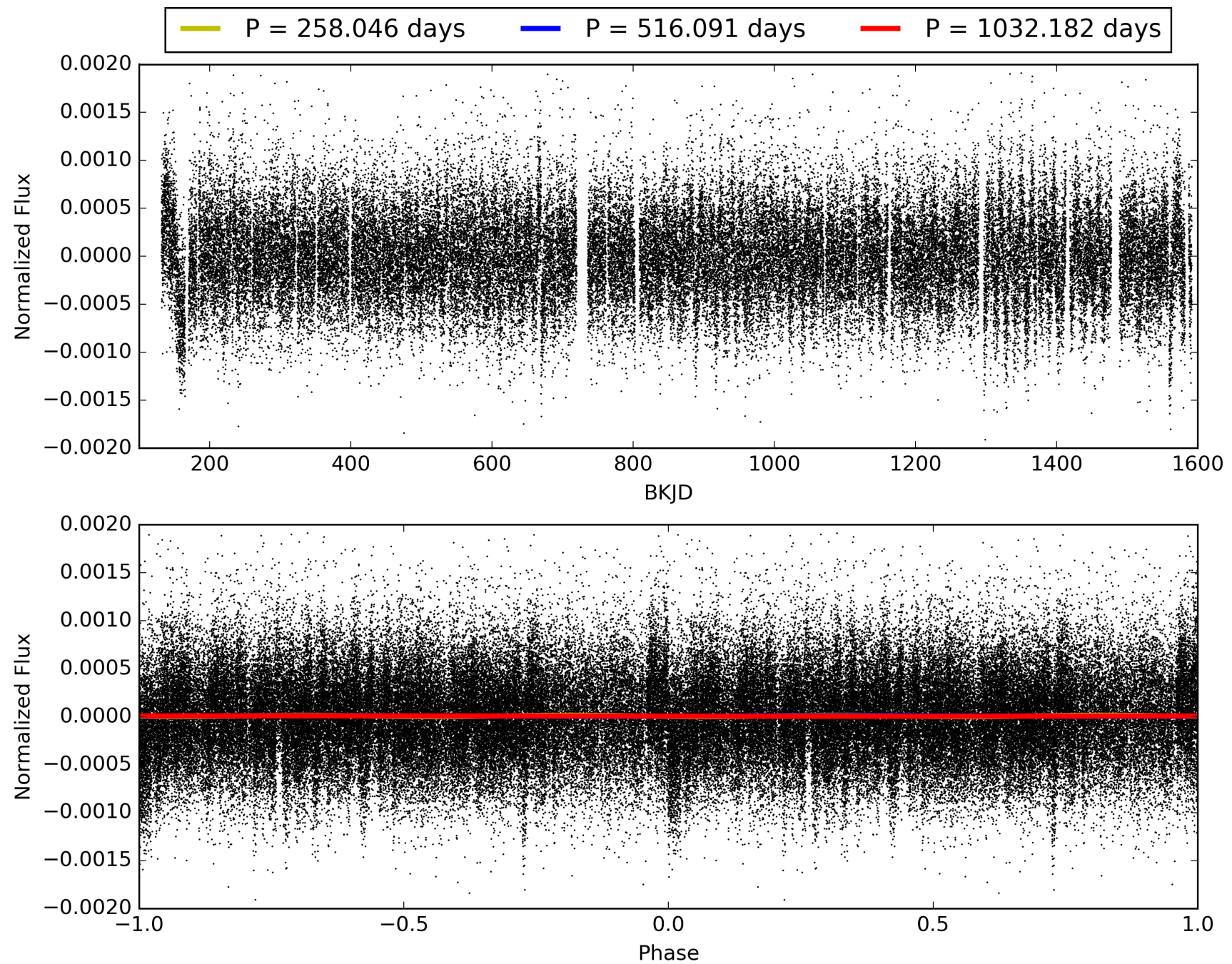
Software Revision: svn+ssh://murzim/repo/soc/tags/release/9.3.42@60958 -- Date Generated: 28-Jan-2016 19:38:50 Z

This Data Validation Report Summary was produced in the Kepler Science Operations Center Pipeline at NASA Ames Research Center

TCE 011721744-01, PDC Light Curves

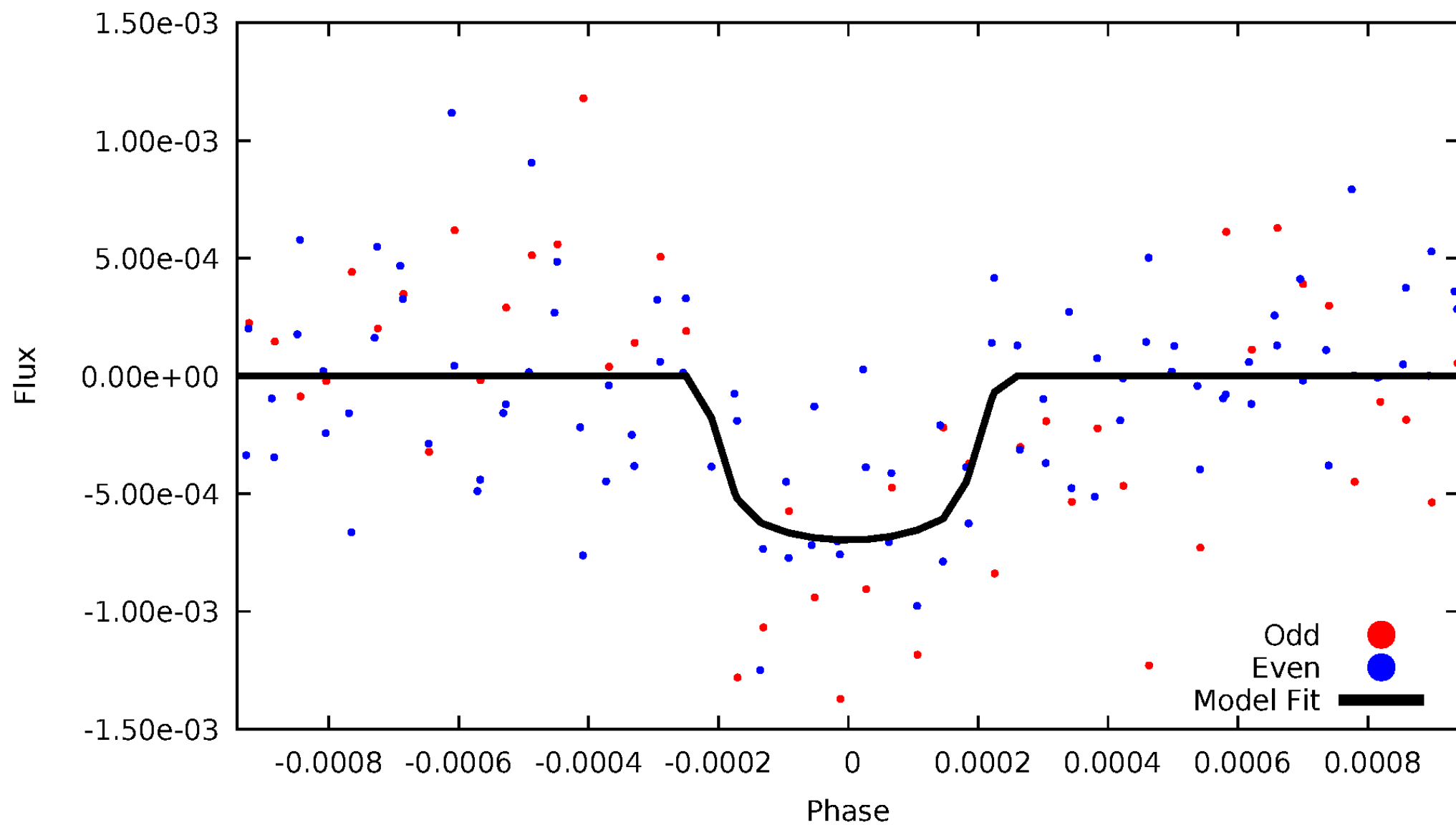


TCE 011721744-01



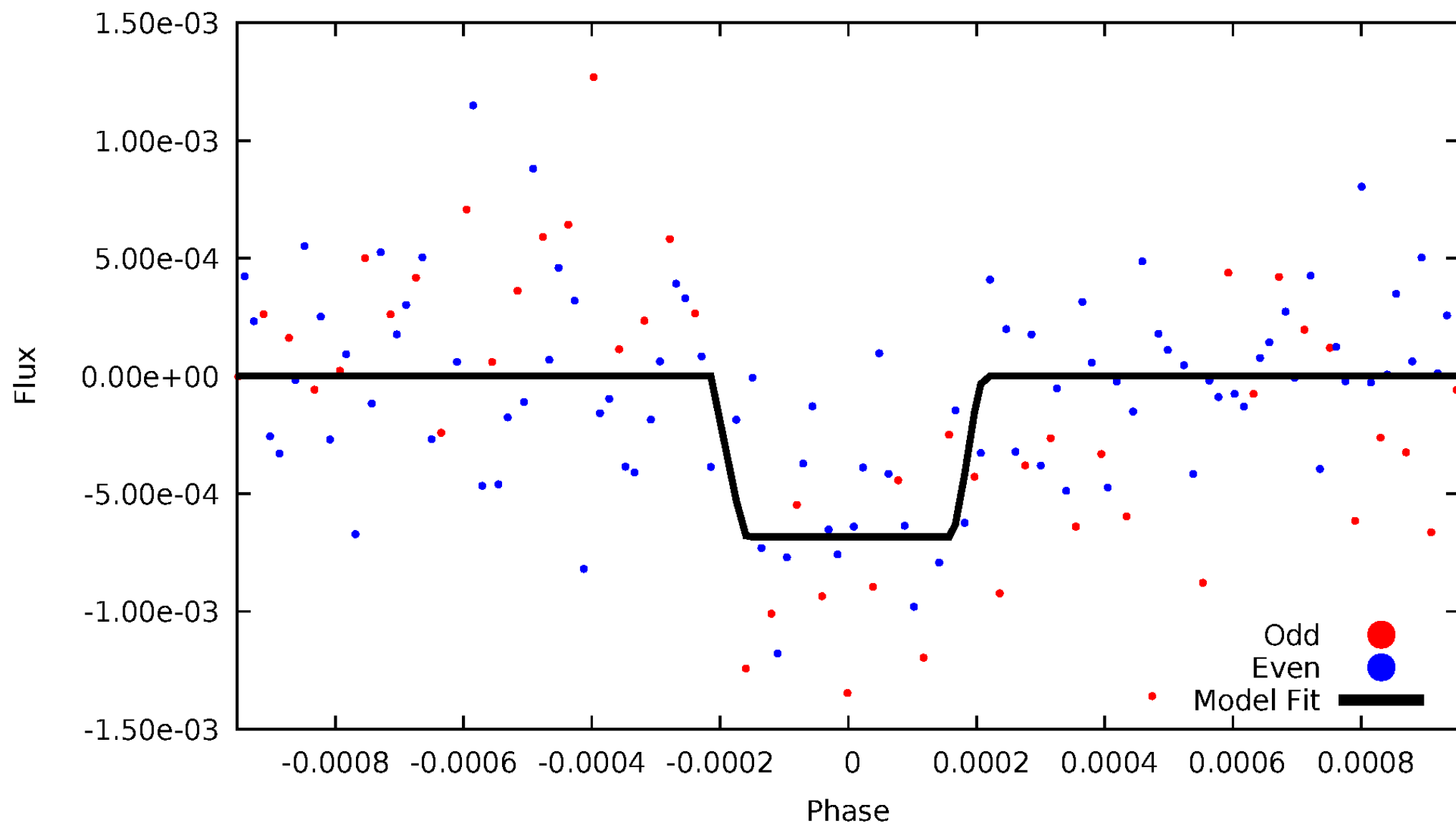
DV Odd/Even

TCE 011721744-01

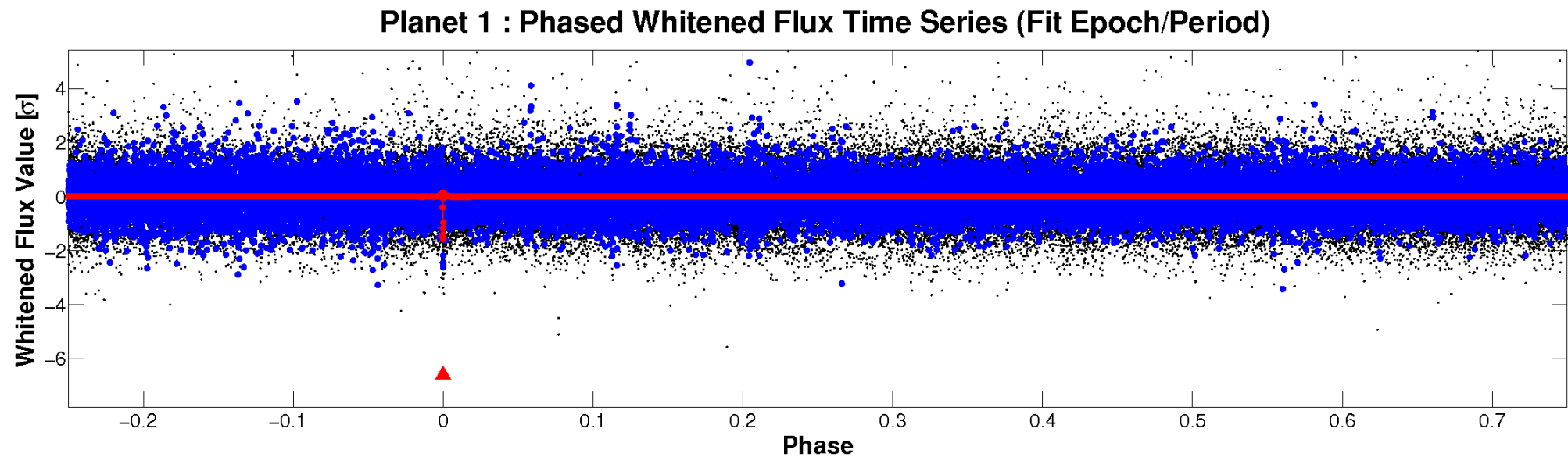
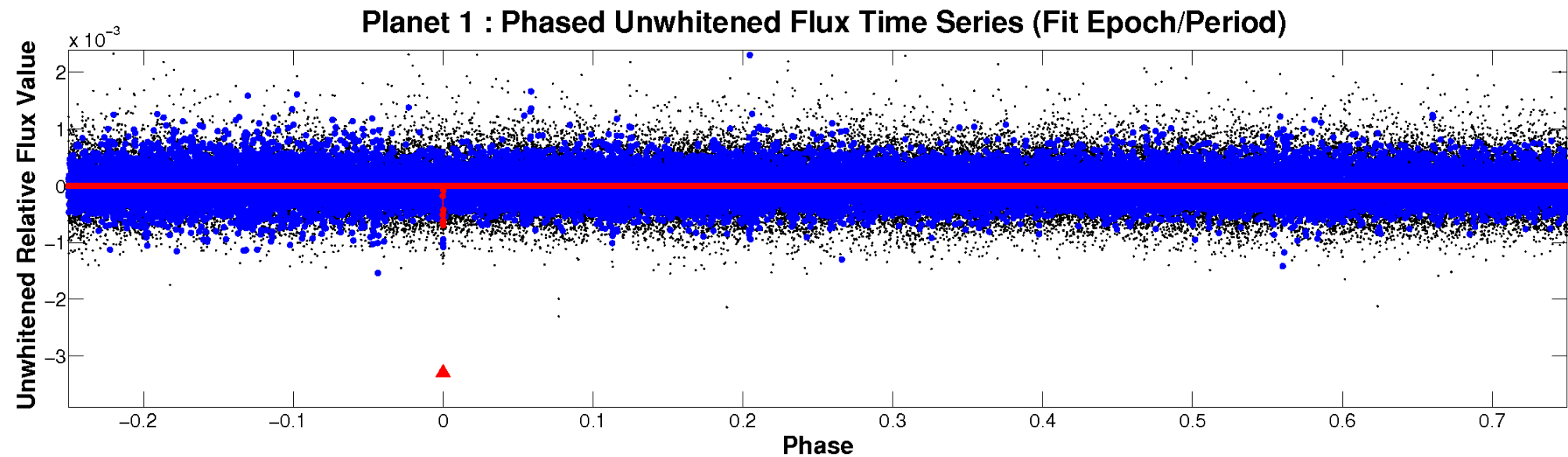


ALT Odd/Even

TCE 011721744-01

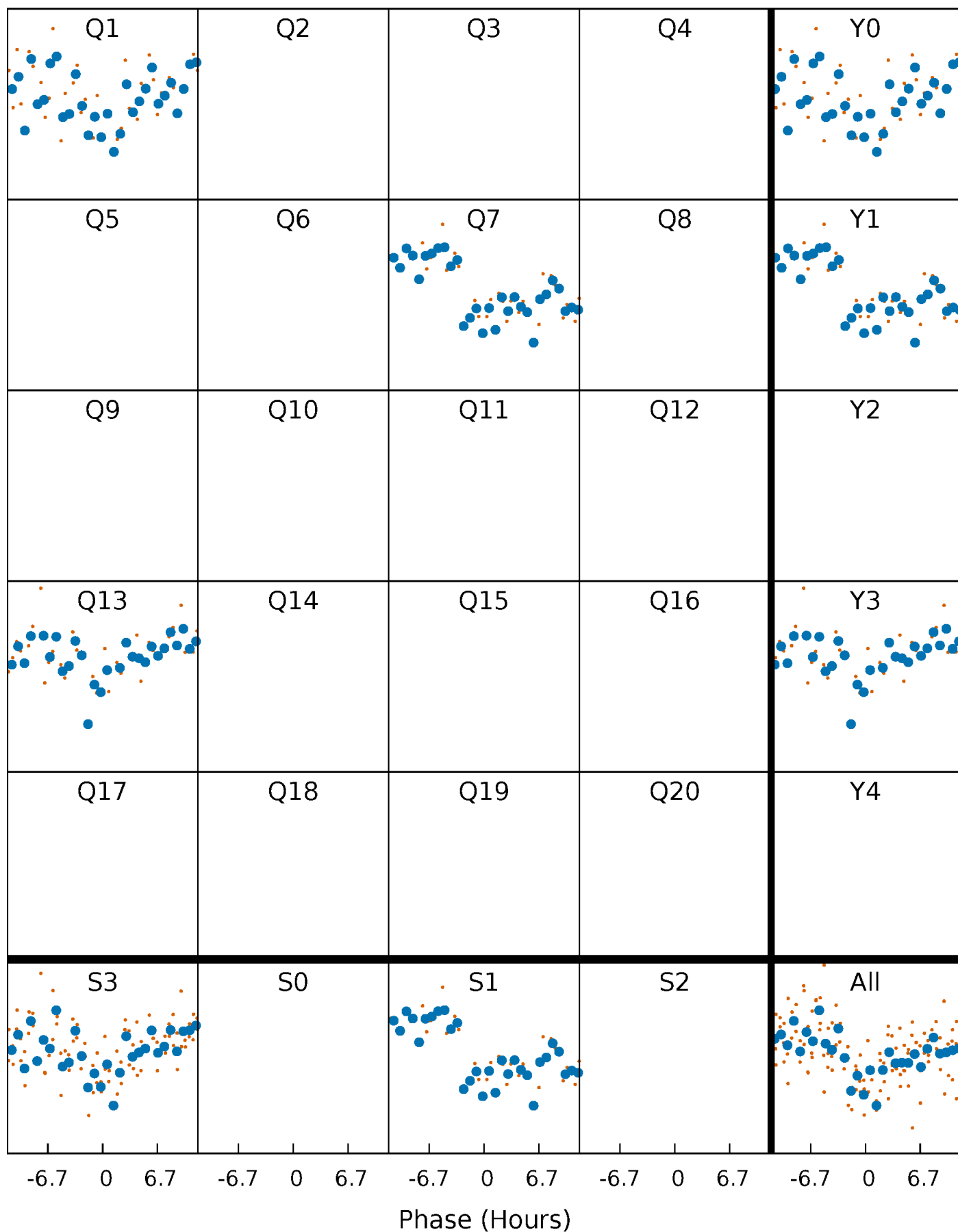


Non-Whitened Vs. Whitened Light Curve



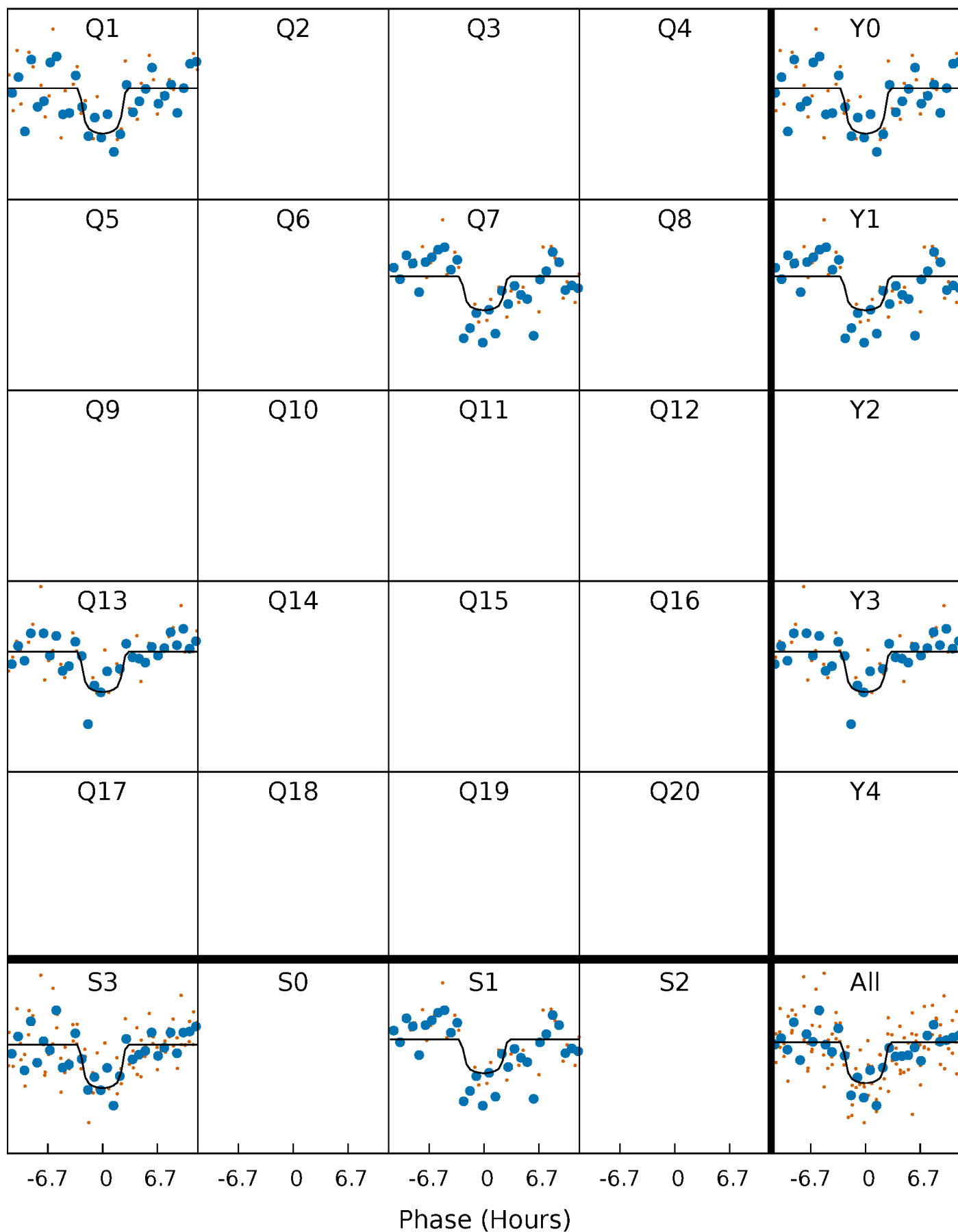
PDC Quarter-Phased Transit Curves

TCE 011721744-01 P=516.091145 Days $T_0=153.199130$ (BKJD)



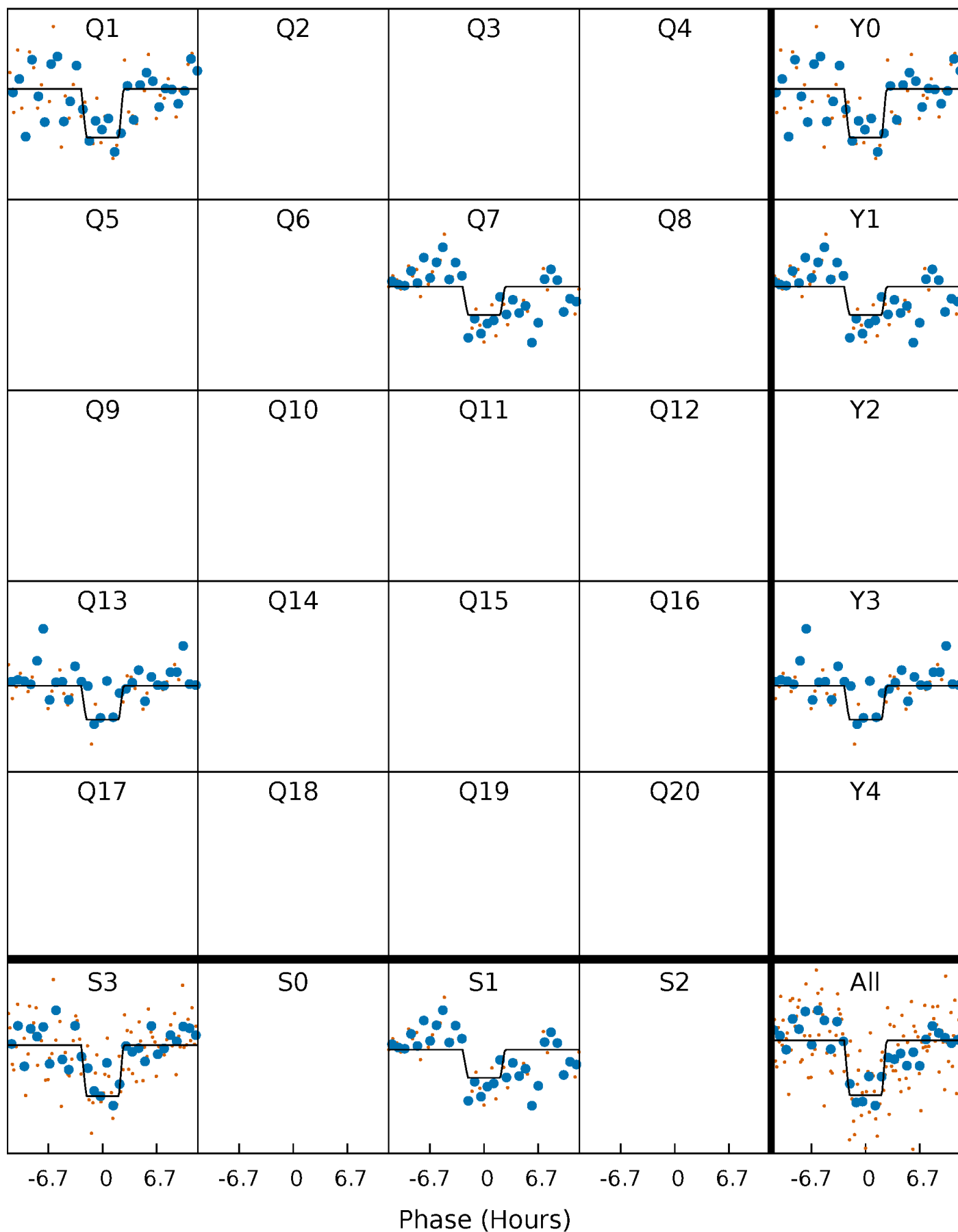
DV Quarter-Phased Transit Curves

TCE 011721744-01 P=516.091145 Days $T_0=153.199130$ (BKJD)



Alt. Detrend Quarter-Phased Transit Curves

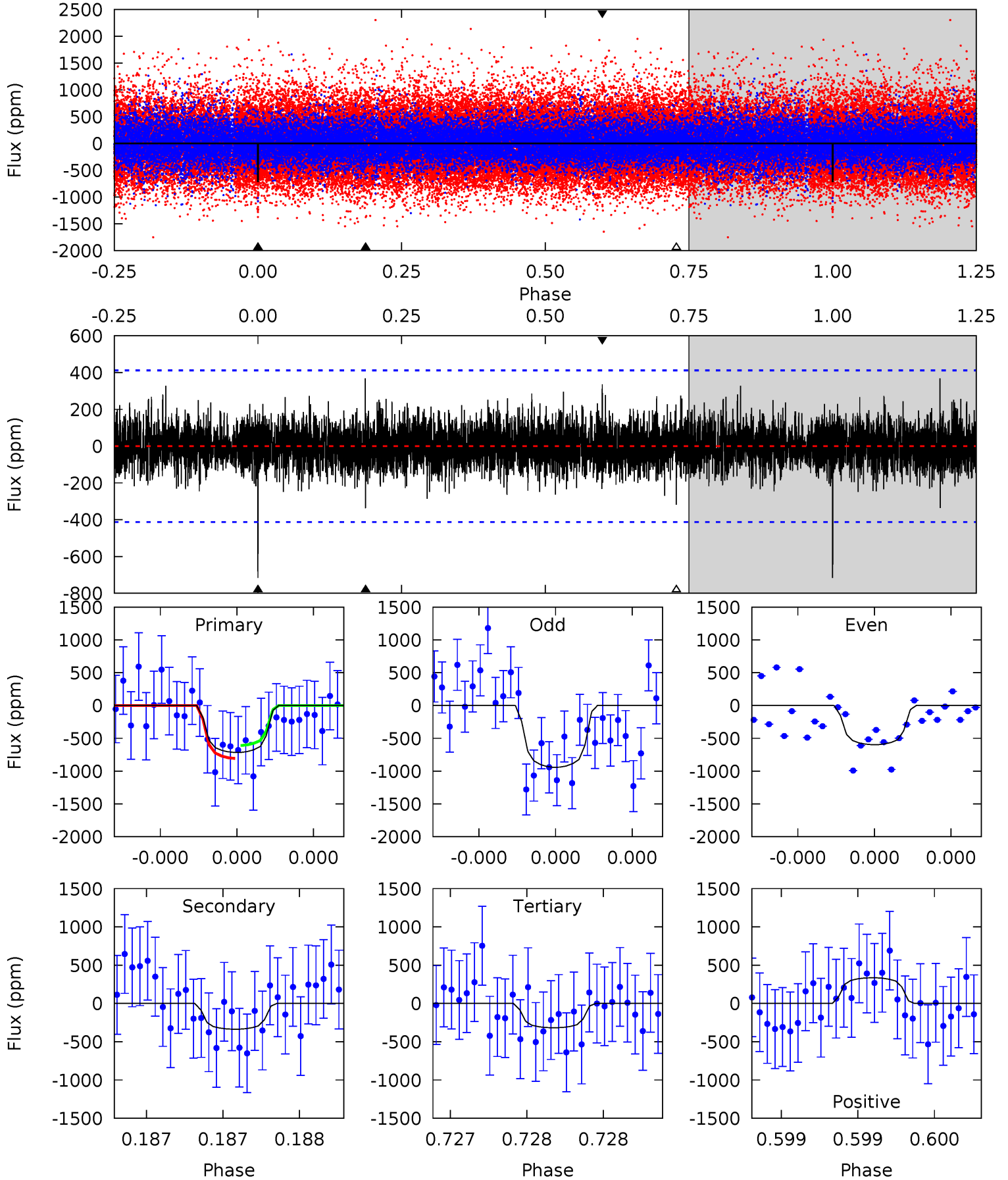
TCE 011721744-01 P=516.083614 Days $T_0=153.201078$ (BKJD)



DV Model-Shift Uniqueness Test

011721744-01, P = 516.091145 Days, E = 153.199130 Days

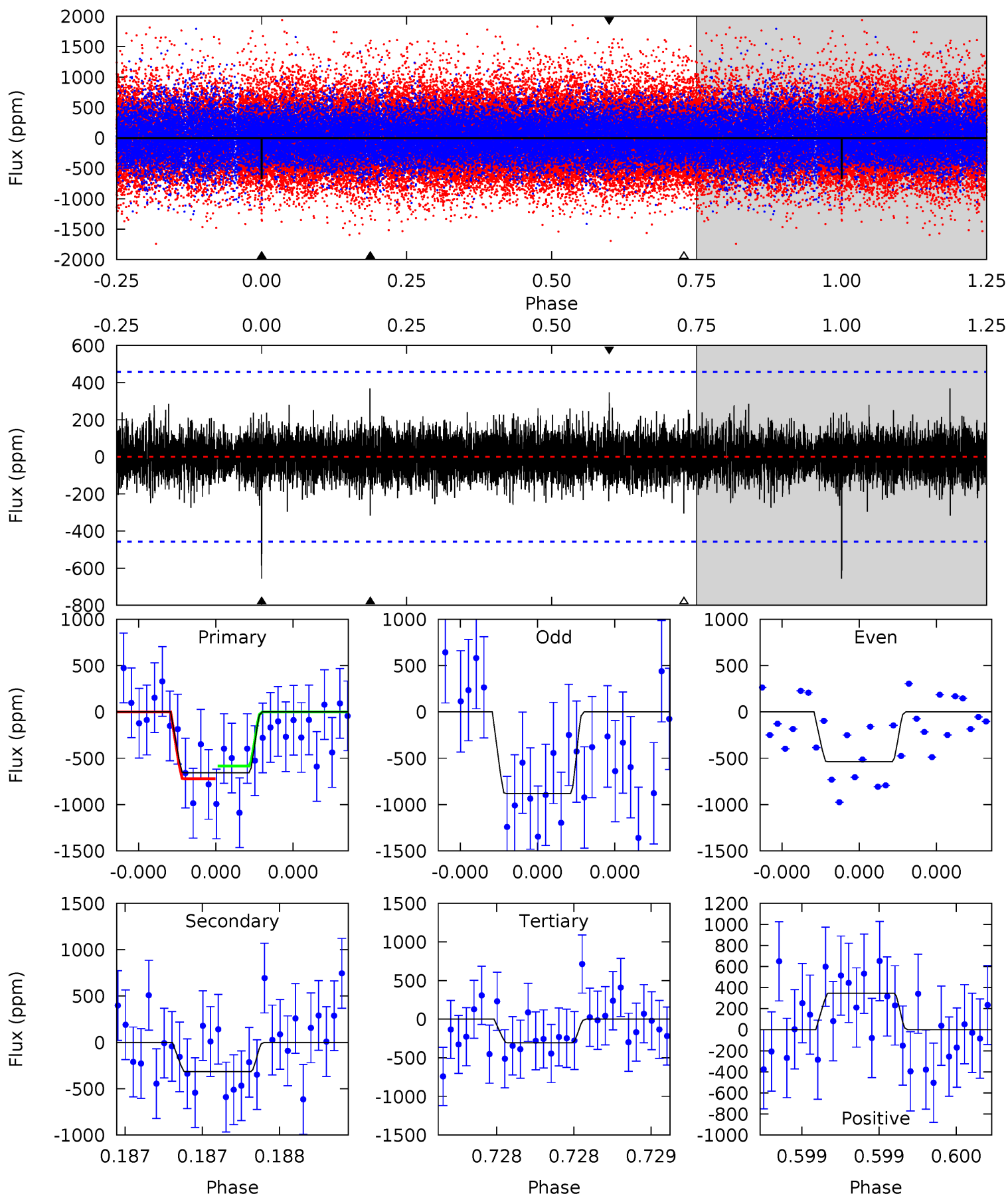
Pri	Sec	Ter	Pos	FA ₁	FA ₂	F _{Red}	Pri-Ter	Pri-Pos	Sec-Ter	Sec-Pos	Odd-Evn	DMM	Shape	TAT
9.70	4.56	4.30	4.54	5.58	3.49	1.11	5.40	5.15	0.26	0.01	2.17	1.12	0.34	1.33



Alt Model-Shift Uniqueness Test

011721744-01, P = 516.083614 Days, E = 153.201078 Days

Pri	Sec	Ter	Pos	FA ₁	FA ₂	F _{Red}	Pri-Ter	Pri-Pos	Sec-Ter	Sec-Pos	Odd-Evn	DMM	Shape	TAT
8.08	3.90	3.75	4.27	5.63	3.56	0.93	4.33	3.81	0.15	-0.37	2.02	1.06	0.36	0.85



Stellar Parameters For KIC 011721744

	$T_{\text{eff}}(K)$	$\log(g)$	[Fe/H]	$R (R_{\odot})$	$M(M_{\odot})$	$p_{\star} (\text{g}\cdot\text{cm}^{-3})$
	5918^{+159}_{-195}	$4.504^{+0.052}_{-0.208}$	$-0.200^{+0.300}_{-0.300}$	$0.910^{+0.273}_{-0.091}$	$0.965^{+0.119}_{-0.119}$	$1.802^{+0.502}_{-0.947}$
	+3%/-3%	+1%/-5%	+150%/-150%	+30%/-10%	+12%/-12%	+28%/-53%
Source	PHO1	KIC0	KIC0	DSEP		

KIC = Kepler Input Catalog; PHO = Photometry; SPE = Spectroscopy; AST = Asteroseismology
 TRA = Transits; DESP = Dartmouth Models; MULT = Multiple Models

Secondary Eclipse Parameters for KIC 011721744-01 / KOI

Detrend	Depth (ppm)	$R_p (R_{\oplus})$	$T_{max} (K)$	$T_{obs} (K)$	A_{obs}
DV	-336 ± 74	$2.99^{+0.68}_{-0.64}$	318^{+23}_{-15}	4855^{+507}_{-437}	31768^{+20529}_{-12431}
Alt.	-317 ± 81	$2.70^{+0.72}_{-0.63}$	319^{+25}_{-16}	5010^{+689}_{-513}	36921^{+29624}_{-16428}

T_{max} = Theoretical Maximum Planetary Temperature

T_{obs} = Observed Planetary Temperature (Assuming $A=0.3$)

A_{obs} = Observed Albedo (Assuming $T=0$)

If a secondary eclipse is present, the system is likely an EB if $T_{obs} \gg T_{max}$ AND $A_{obs} \gg 1.0$

DV Centroid Data

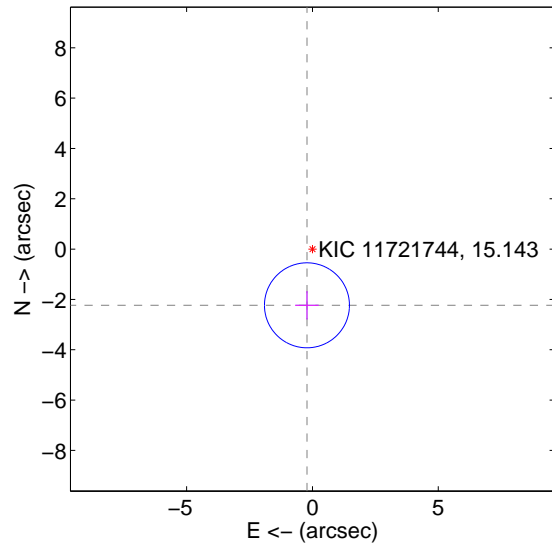
Supplemental centroid analysis for 011721744-01. Kepler magnitude: 15.14. Transit SNR 7.61

There are 1 quarters with good PRF difference image offsets

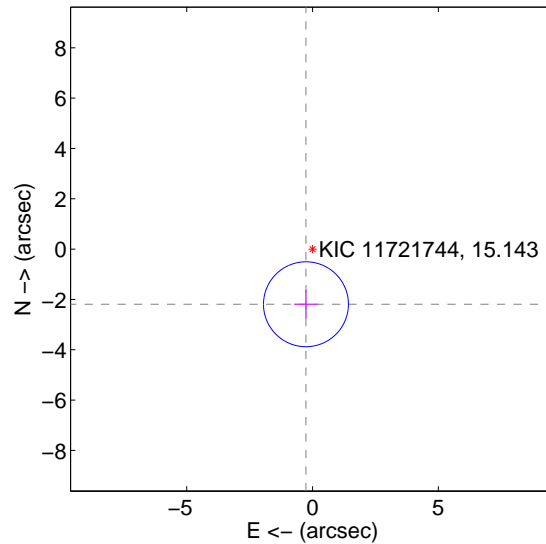
The direct PRF centroid is offset from the target star catalog position by about 0.06 arcsec

	Distance in arcsec	Distance / σ	Δ RA	Δ Dec
PRF-fit source offset from OOT	2.244 ± 0.563	3.99	0.218 ± 0.465	-2.233 ± 0.564
PRF-fit source offset from KIC position	2.207 ± 0.562	3.92	0.261 ± 0.465	-2.191 ± 0.564
photometric centroid source offset	2.28 ± 1.91	1.19	-0.50 ± 1.59	-2.22 ± 1.93

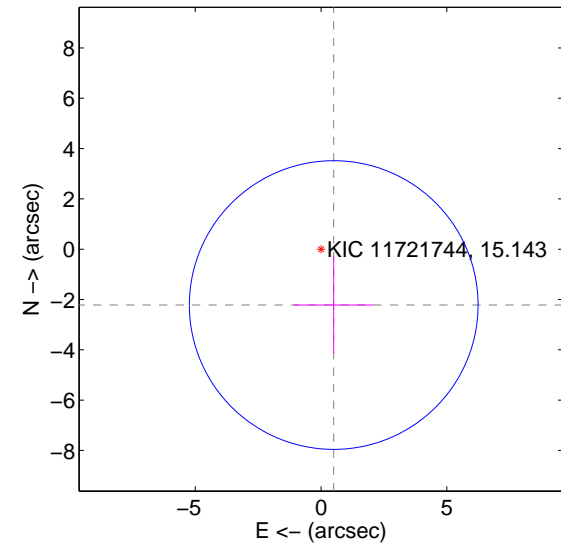
offset from difference PRF-fit to OOT PRF-fit



offset from difference PRF-fit to KIC position

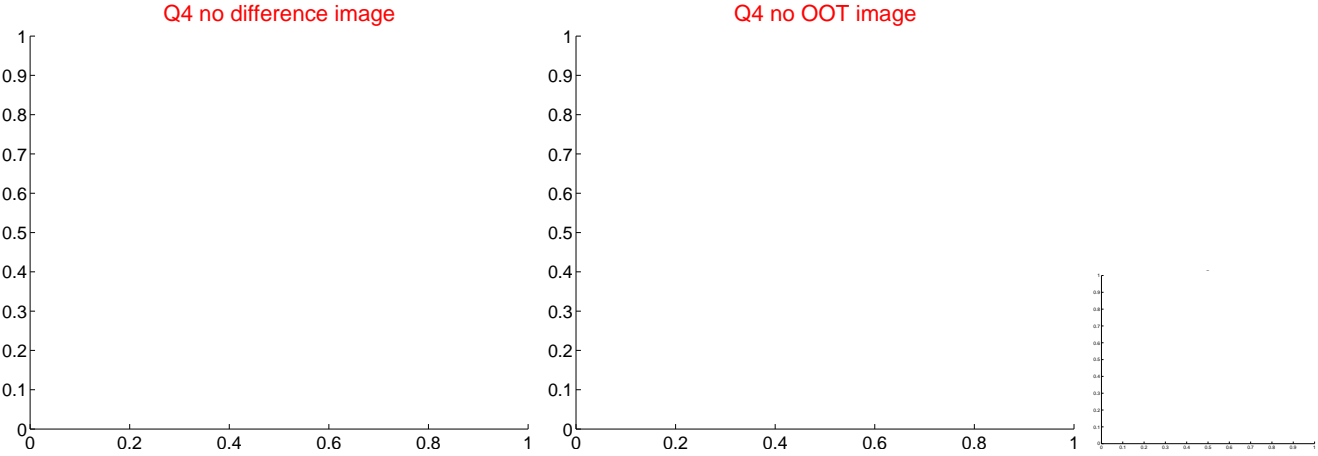
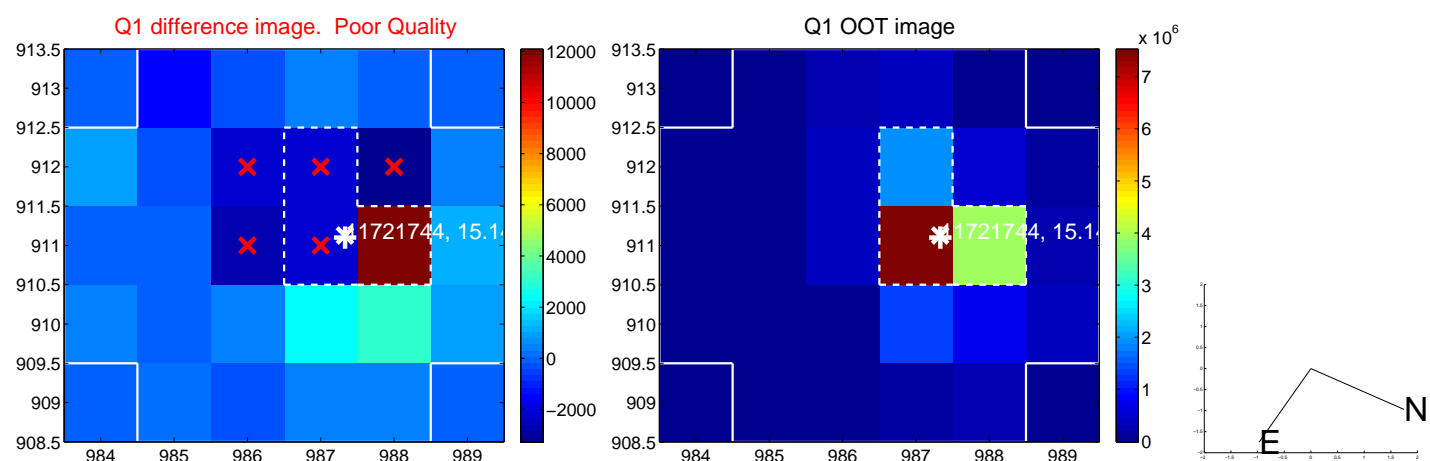


offset from photometric centroids



Centroid source offsets from the target star reconstructed from PRF and photometric centroids. Sky blue crosses: good quarterly centroid offsets; Vermillion crosses: bad quarterly centroid offsets; magenta cross: average over quarters. Length of the crosses: one- σ uncertainty. Blue circle: three- σ . Red *: target star. Blue *: Other stars. Text next to a star gives its KIC ID and kepmag. KIC IDs > 15,000,000 are from the UKIRT catalog.

white ×: KIC target position; +: OOT centroid; △: difference centroid. red ✕: large negative pixel value.



white \times : KIC target position; $+$: OOT centroid; \triangle : difference centroid. red \times : large negative pixel value.

Q5 no difference image



Q5 no OOT image



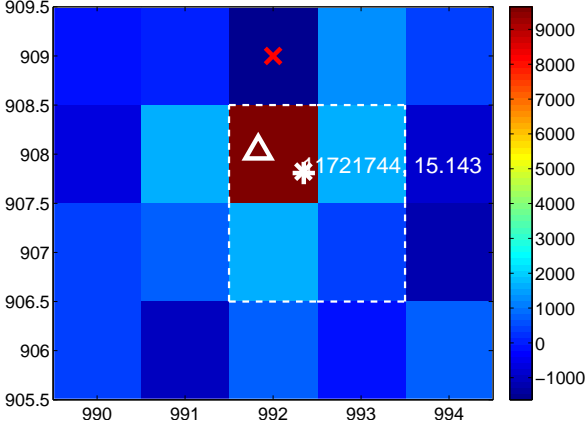
Q6 no difference image



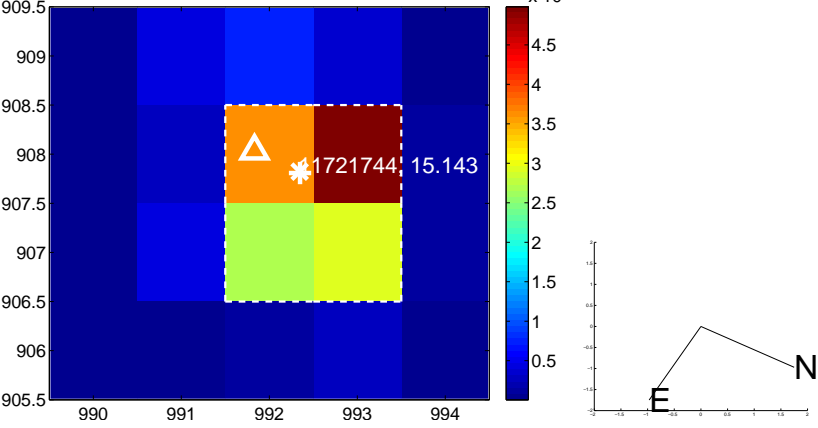
Q6 no OOT image



Q7 difference image



Q7 OOT image



Q8 no difference image



Q8 no OOT image



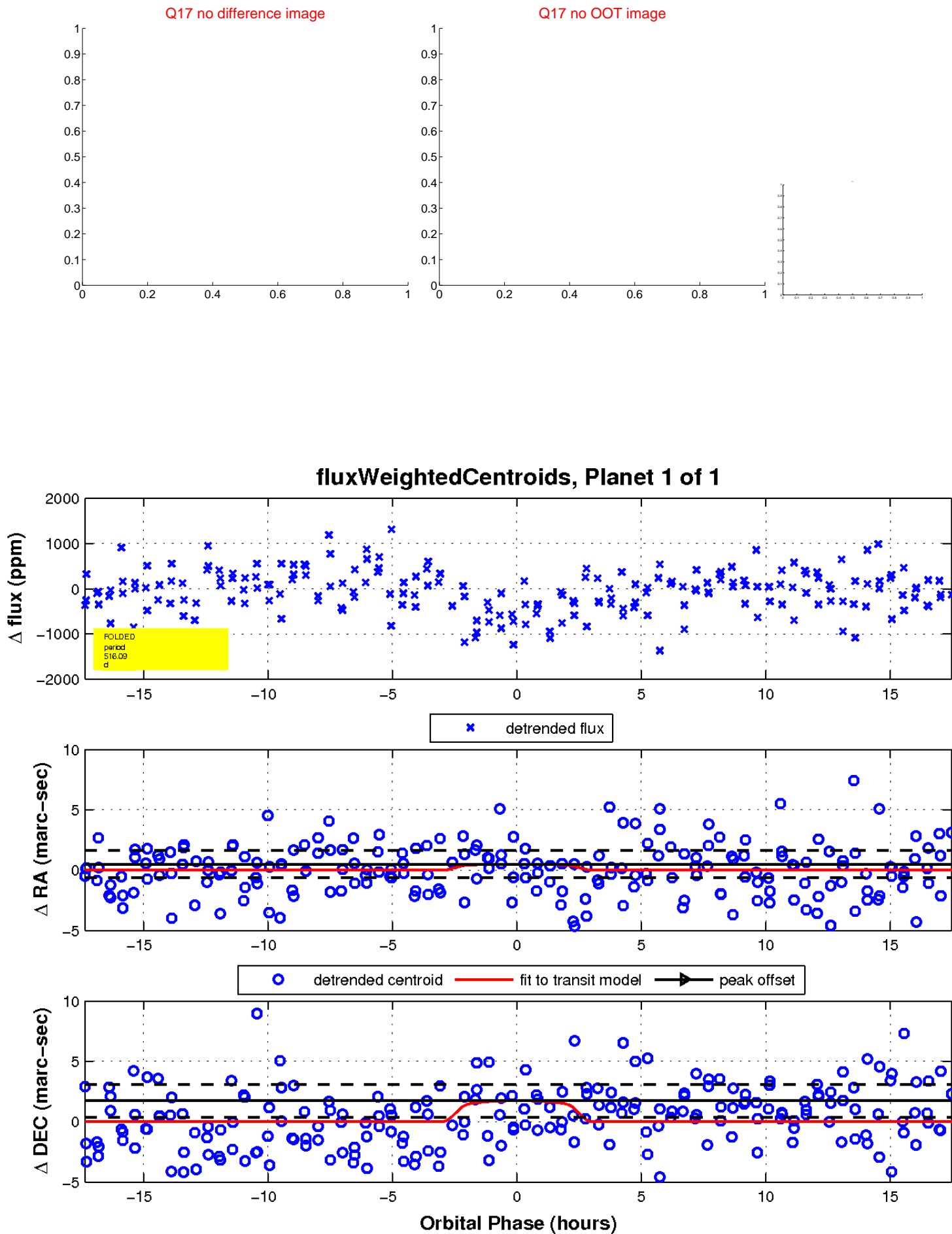
white \times : KIC target position; $+$: OOT centroid; \triangle : difference centroid. red \times : large negative pixel value.



white \times : KIC target position; $+$: OOT centroid; \triangle : difference centroid. red \times : large negative pixel value.



white \times : KIC target position; $+$: OOT centroid; \triangle : difference centroid. red \times : large negative pixel value.



UKIRT Image

Declination

