

KIC 011719549

Q1-17 DR25 TCE Parameters

TCE	Run Type	KOI?	Period (Days)	Epoch (BKJD)	Depth (ppm)	Duration (Hours)	MES	SNR	R_{\star} (R_{\odot})	T_{\star} (K)	R_p (R_{\oplus})	S_p (S_{\oplus})
011719549-01	OBS	No	2.422294	133.923071	81.7	9.000	8.8	-1.0	4.71	11360	4.39	115232.61

Robovetter Results

TCE	Run Type	Disp	Score	N	S	C	E	Comments
011719549-01	OBS	FP	0.00	1	0	0	0	LPP_DV—LPP_ALT—MOD_NONUNIQ_ALT—CENT_NOFITS

Notes: OBS = Observed. INJ = Injected. INV = Inverted. SCR = Scrambled.

N = Not Transit-Like. S = Stellar Eclipse. C = Centroid Offset. E = Ephemeris Match.

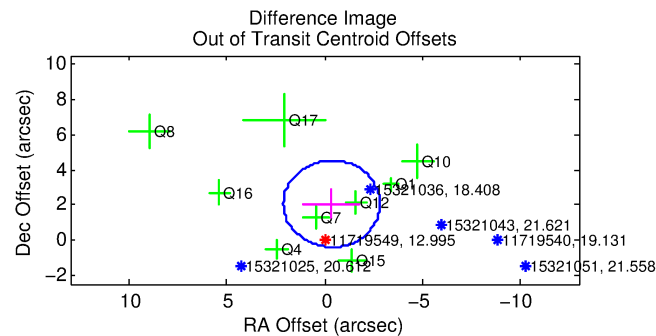
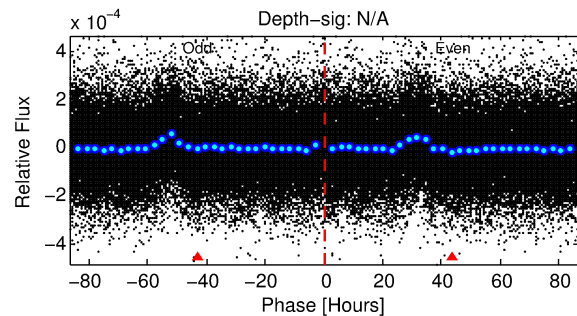
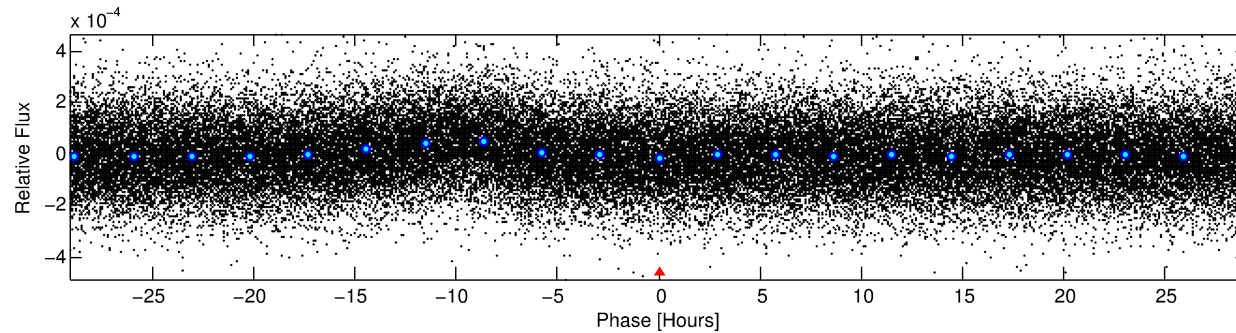
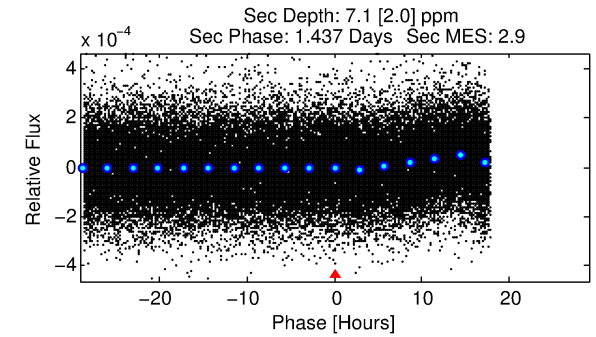
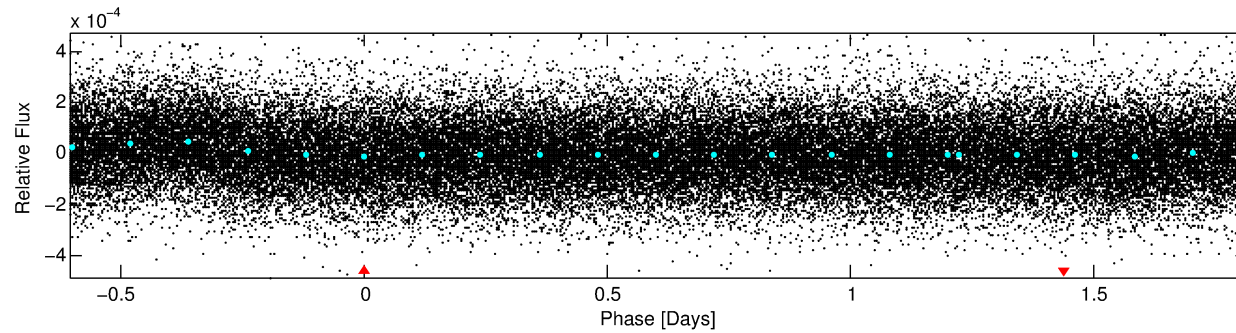
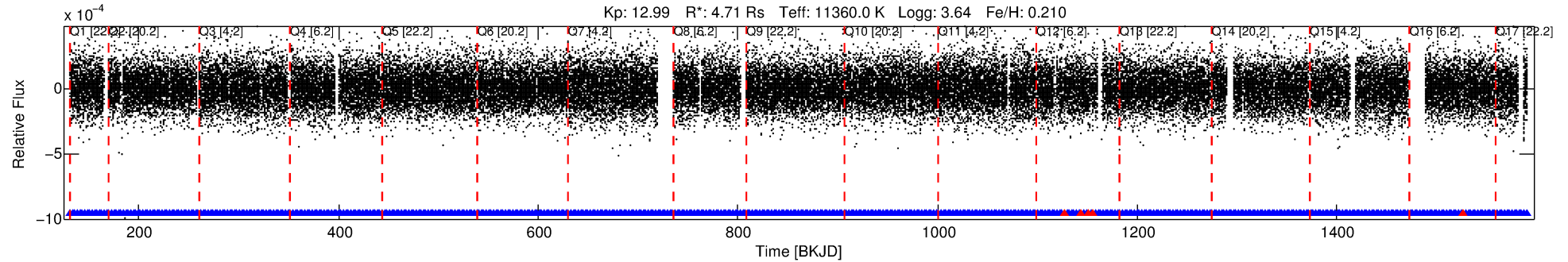
See http://exoplanetarchive.ipac.caltech.edu/docs/API_kepcandidate_columns.html#proj_disp_col for comment definitions.

Ephemeris Match Information For 011719549-01

No Significant Match Found

DV One-Page Summary

KIC: 11719549 Candidate: 1 of 1 Period: 2.422 d



TPS TCE Results:

Period = 2.42229 d
Epoch = 133.9231 BKJD

DV fit results are unavailable

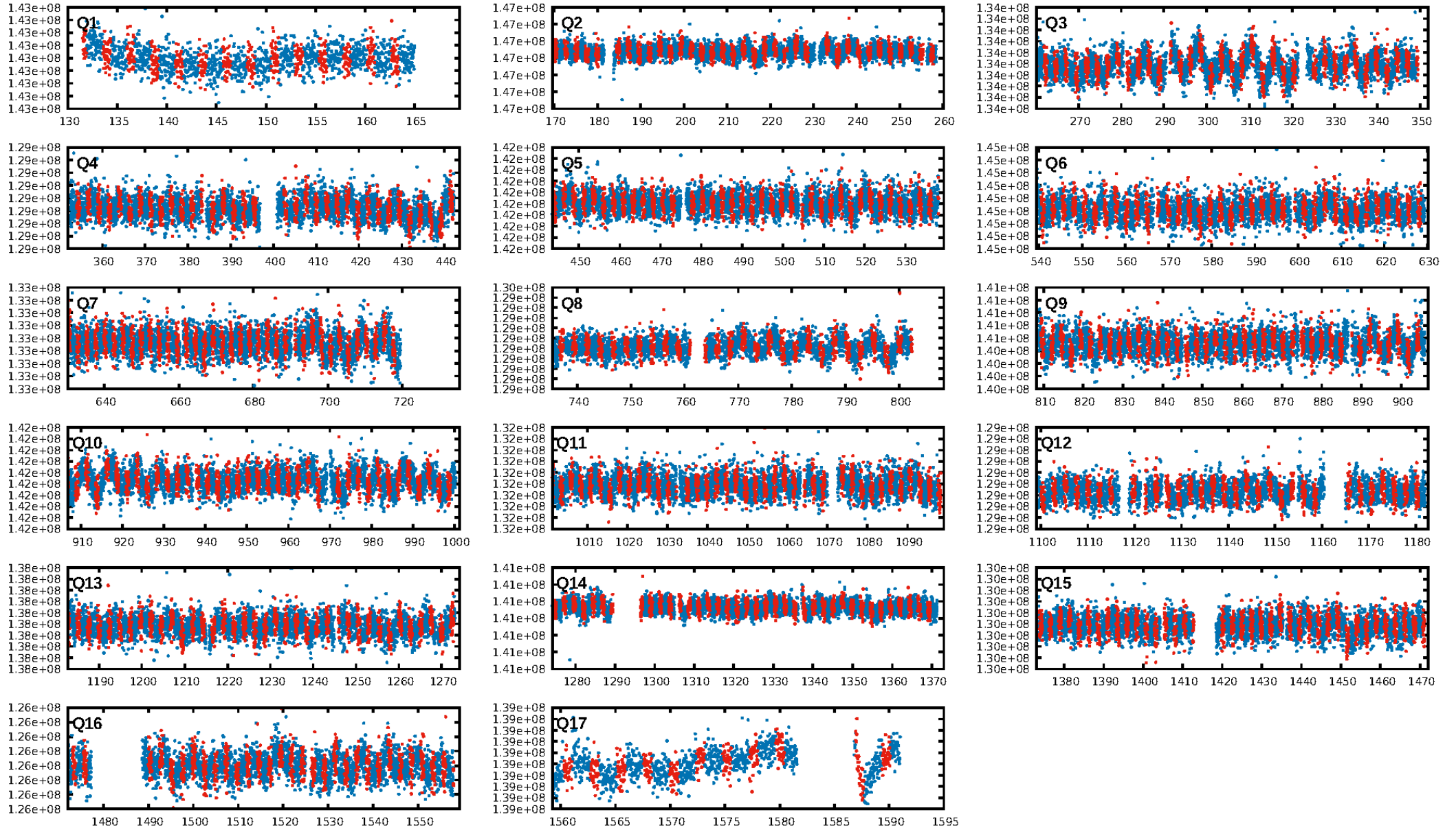
DV Diagnostic Results:

ShortPeriod-sig: N/A
LongPeriod-sig: N/A
ModelChiSquare2-sig: N/A
ModelChiSquareGof-sig: N/A
Bootstrap-pfa: 4.32e-16
RollingBand-fgt: 0.99 [533/538]
GhostDiagnostic-chr: 2.326
Centroid-sig: 0.0%
Centroid-so: 3.420 arcsec [2.23σ]
OotOffset-rm: 2.089 arcsec [2.54σ]
KicOffset-rm: 2.073 arcsec [2.42σ]
OotOffset-st: 1/2/4/2 [9]
KicOffset-st: 1/2/4/2 [9]
DiffImageQuality-fgm: 0.44 [4/9]
DiffImageOverlap-fno: 1.00 [17/17]

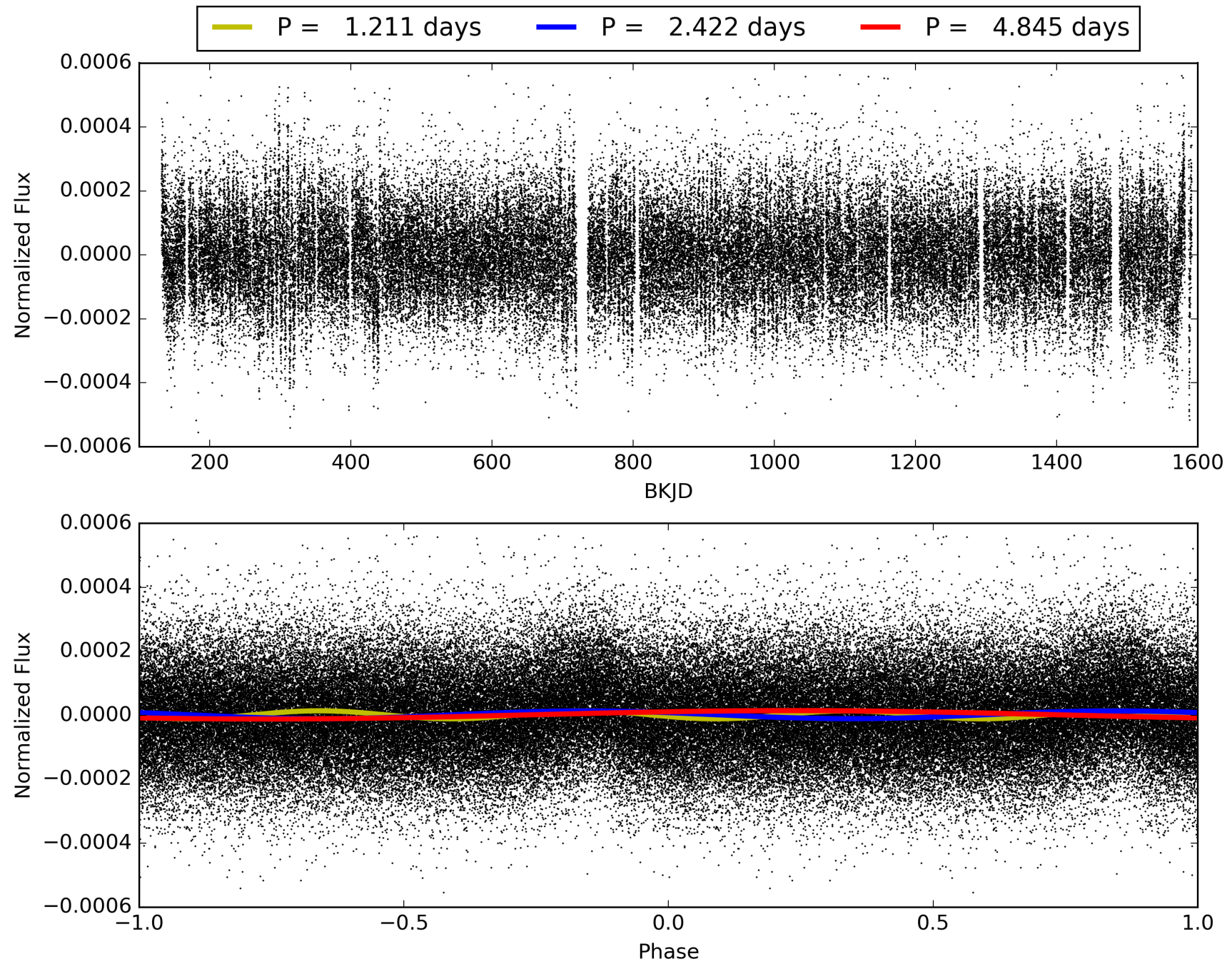
Software Revision: svn+ssh://murzim/repo/soc/tags/release/9.3.42@60958 -- Date Generated: 28-Jan-2016 17:50:37 Z

This Data Validation Report Summary was produced in the Kepler Science Operations Center Pipeline at NASA Ames Research Center

TCE 011719549-01, PDC Light Curves

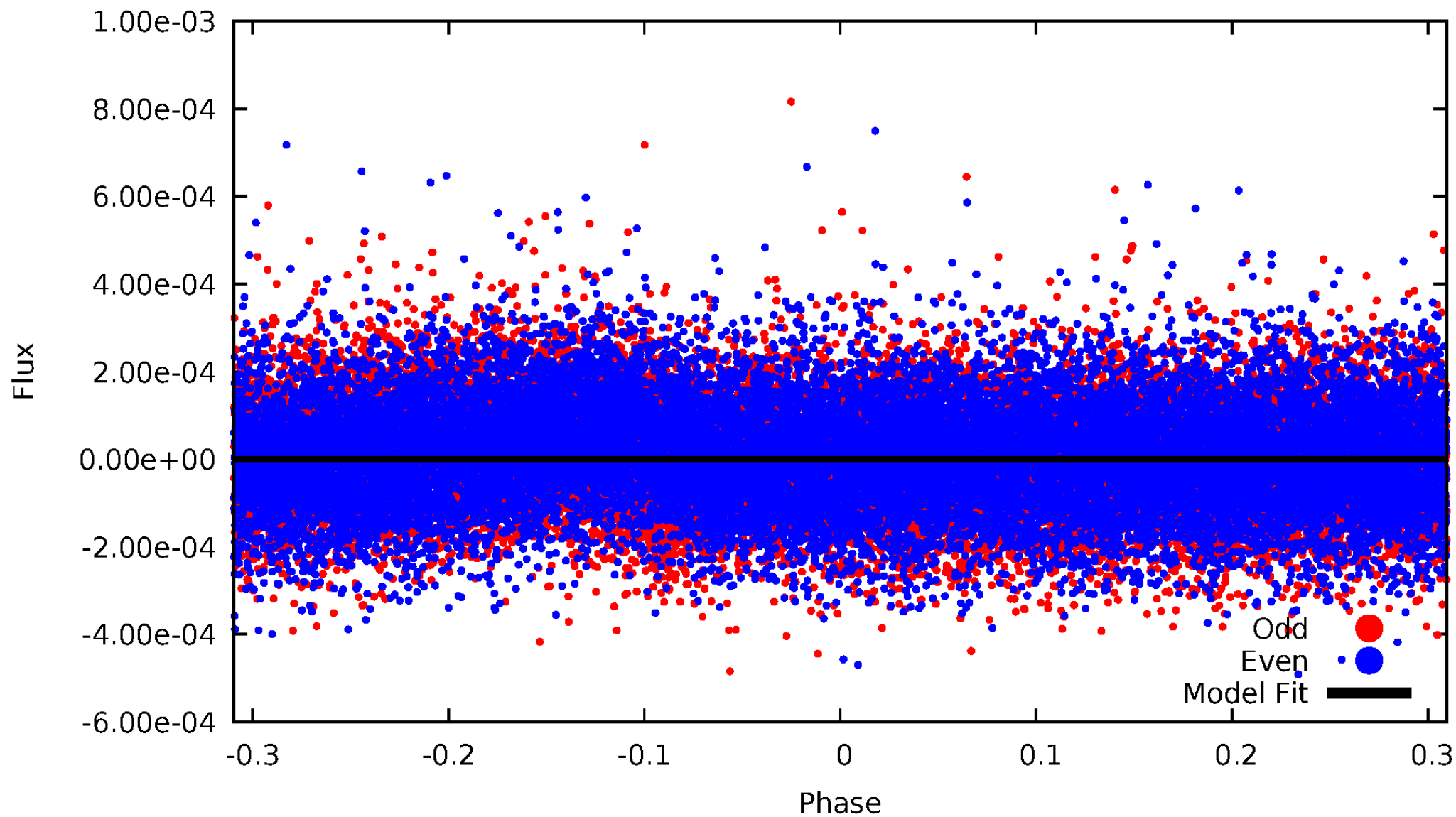


TCE 011719549-01



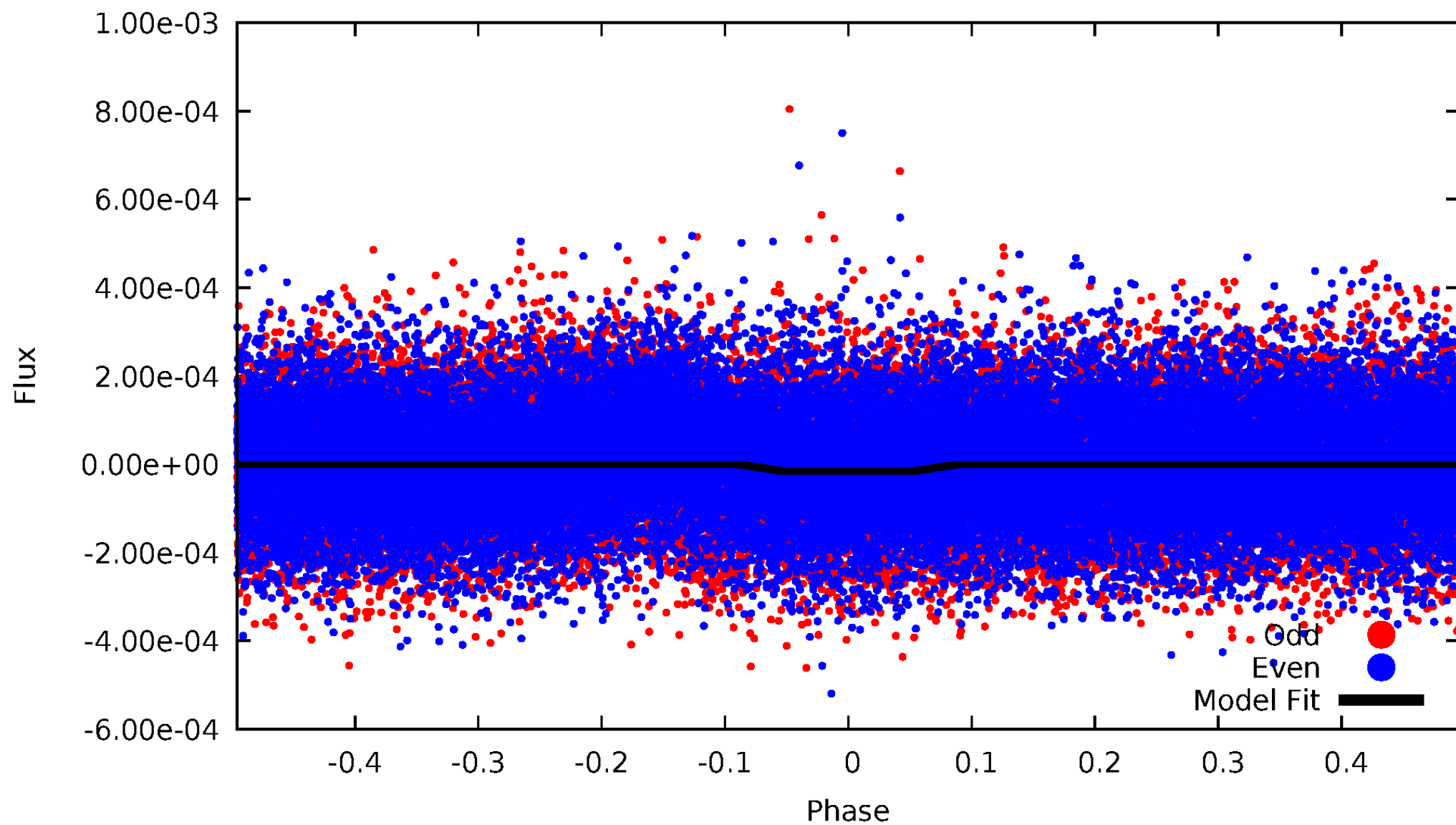
DV Odd/Even

TCE 011719549-01

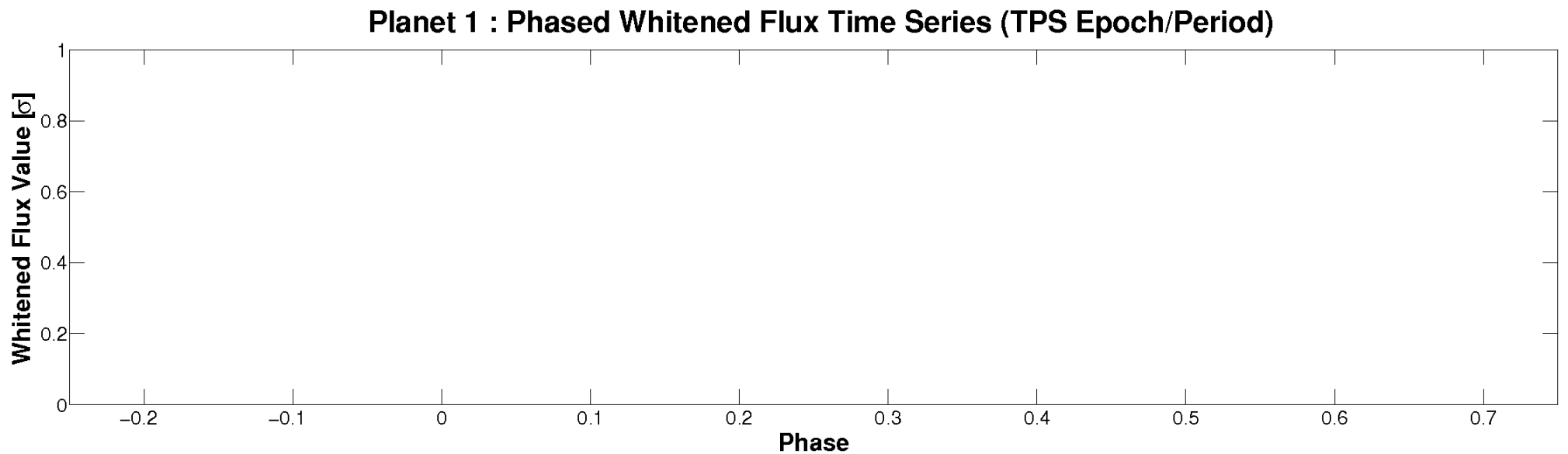
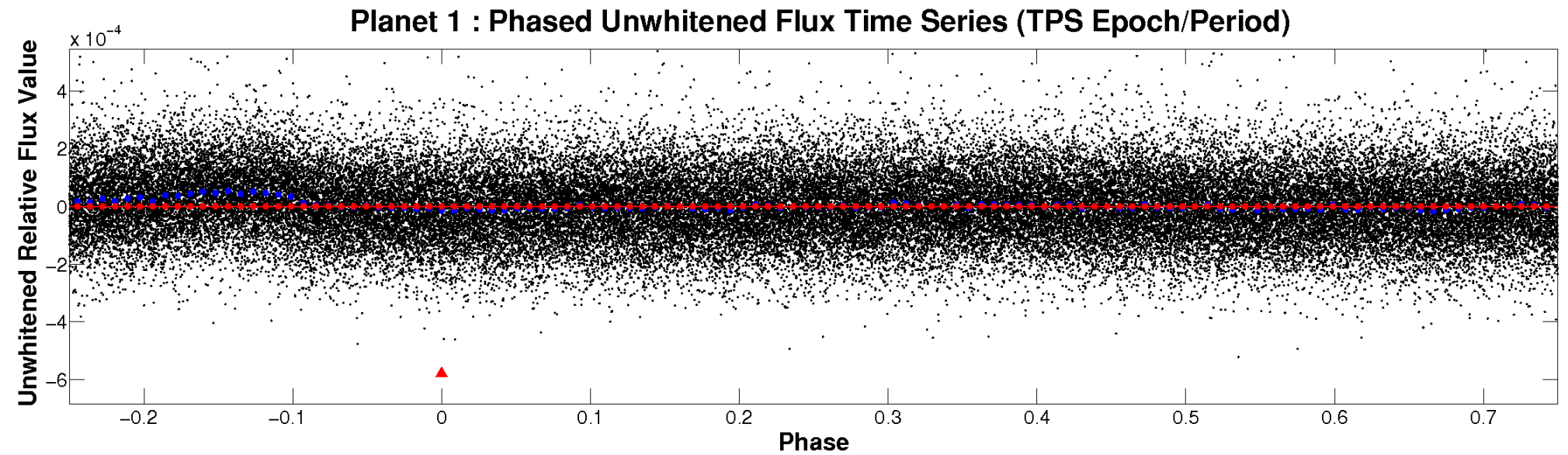


ALT Odd/Even

TCE 011719549-01

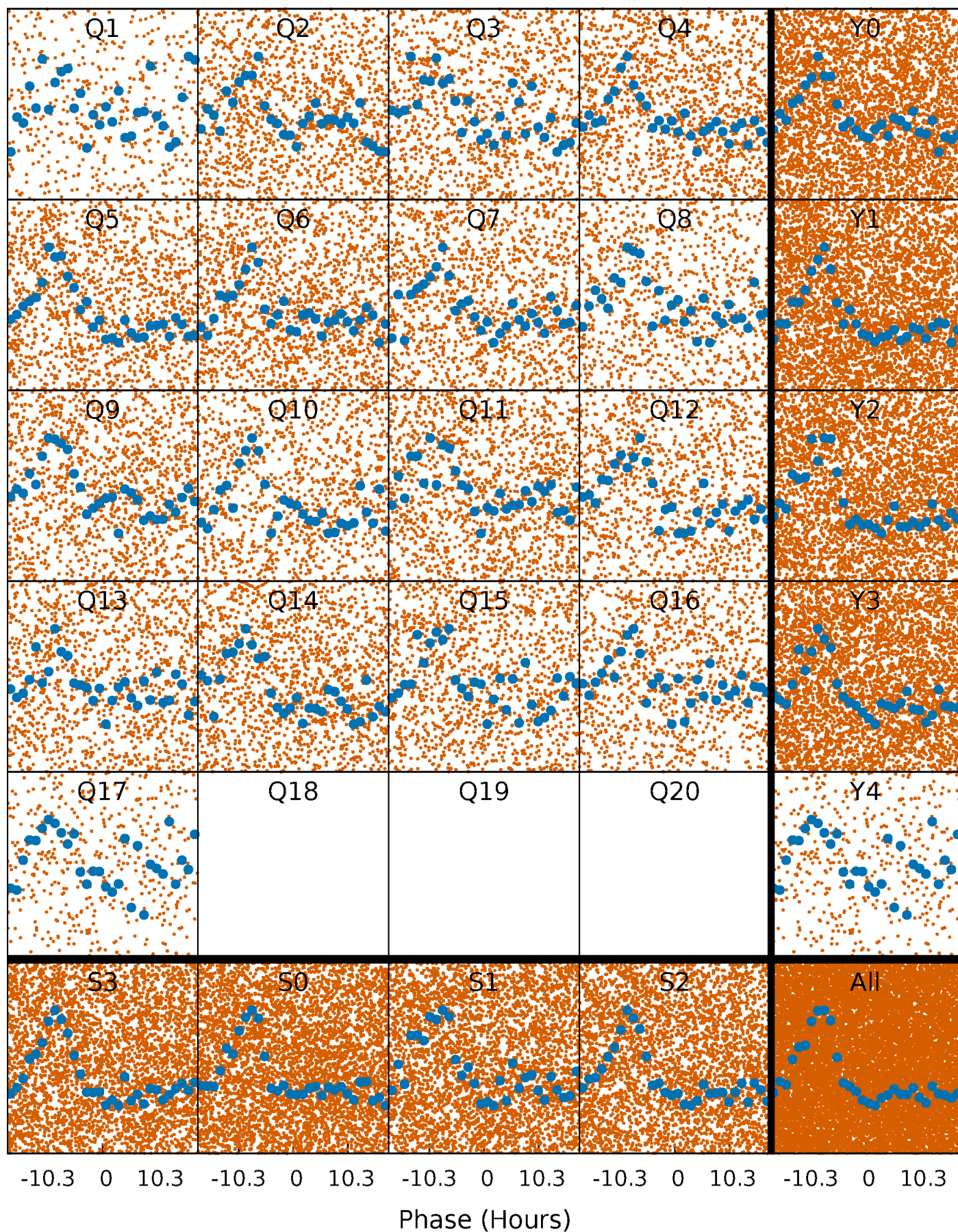


Non-Whitened Vs. Whitened Light Curve



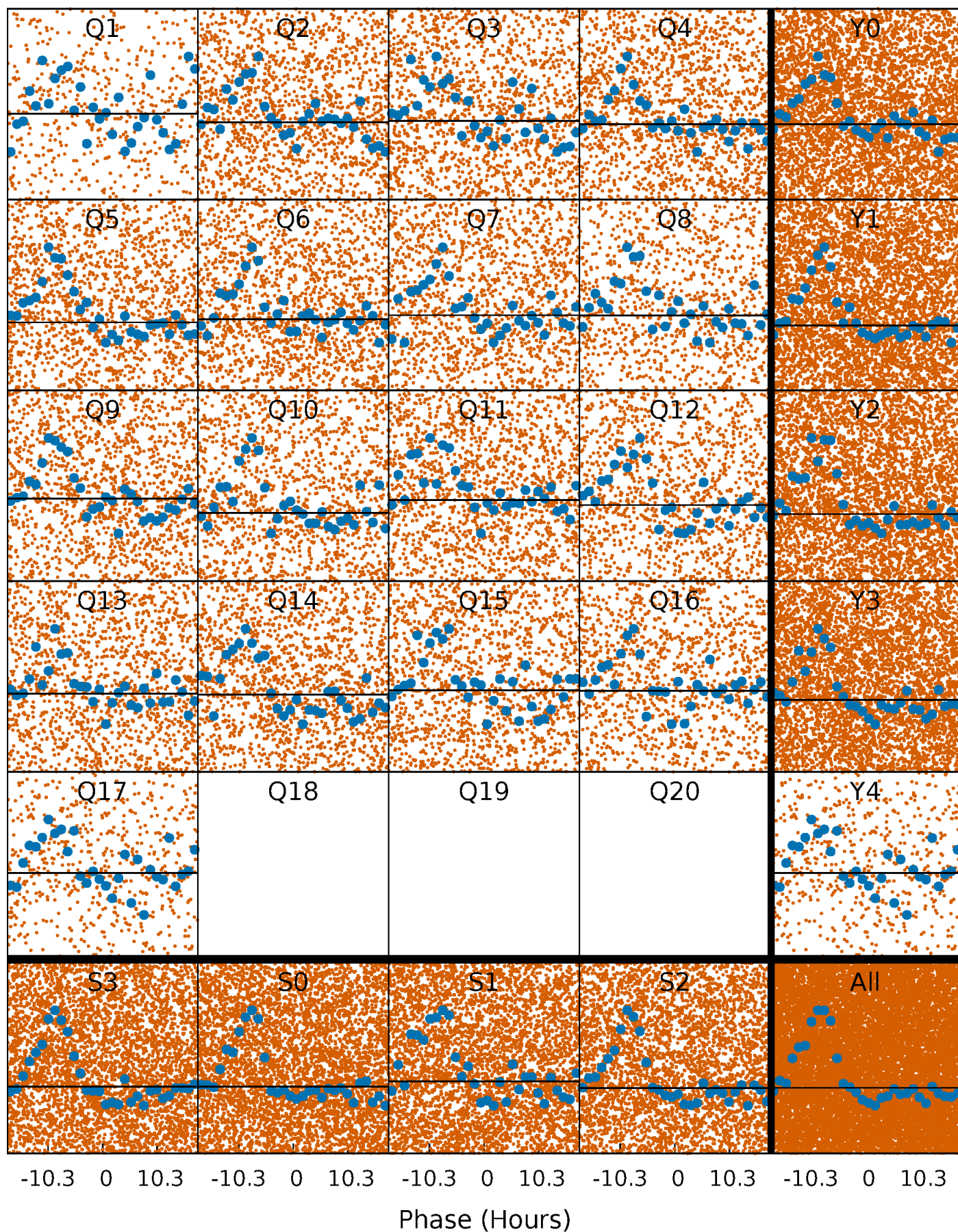
PDC Quarter-Phased Transit Curves

TCE 011719549-01 P= 2.422294 Days $T_0=133.923071$ (BKJD)



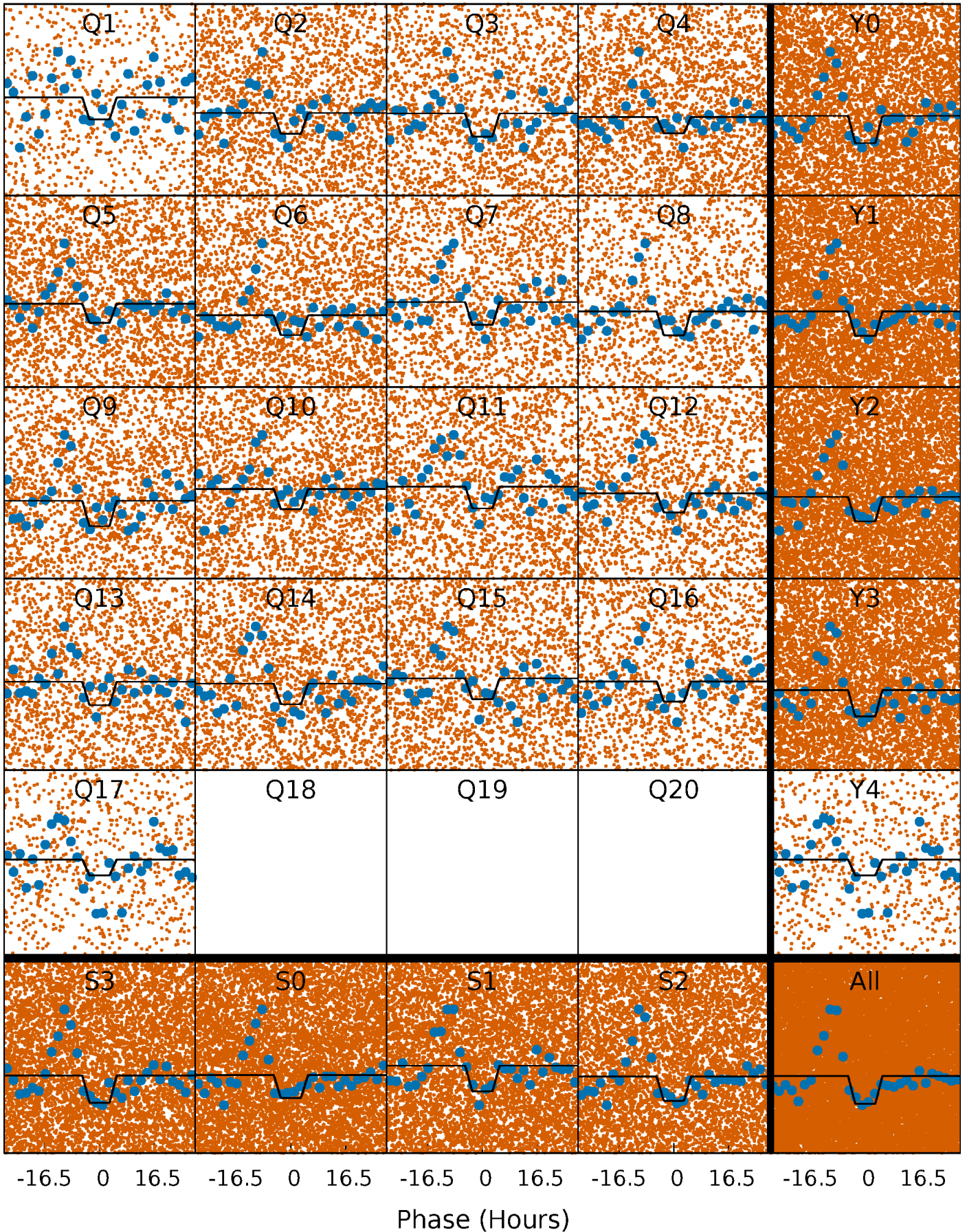
DV Quarter-Phased Transit Curves

TCE 011719549-01 P= 2.422294 Days $T_0=133.923071$ (BKJD)



Alt. Detrend Quarter-Phased Transit Curves

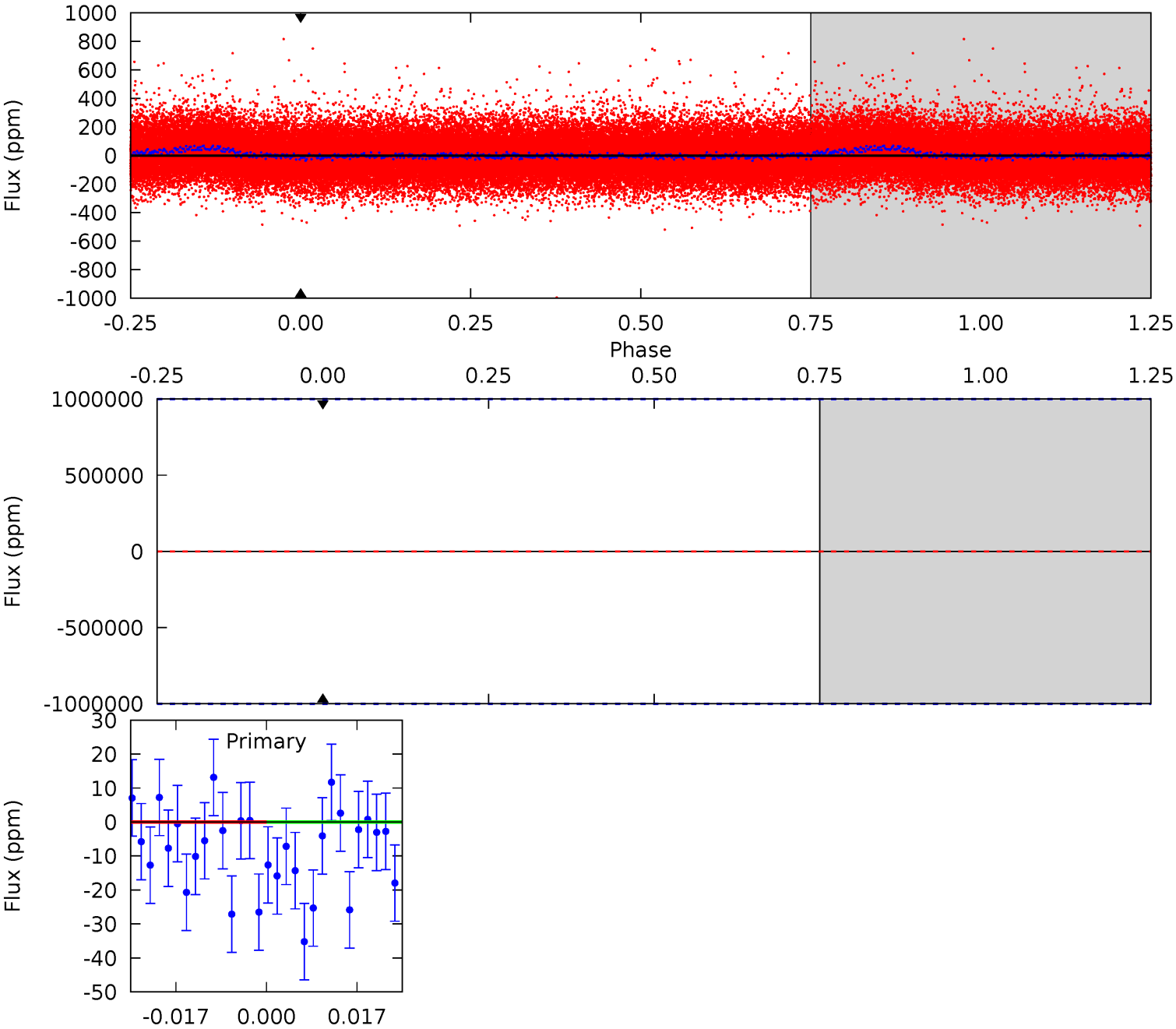
TCE 011719549-01 P= 2.422294 Days $T_0=131.555896$ (BKJD)



DV Model-Shift Uniqueness Test

011719549-01, P = 2.422294 Days, E = 131.500777 Days

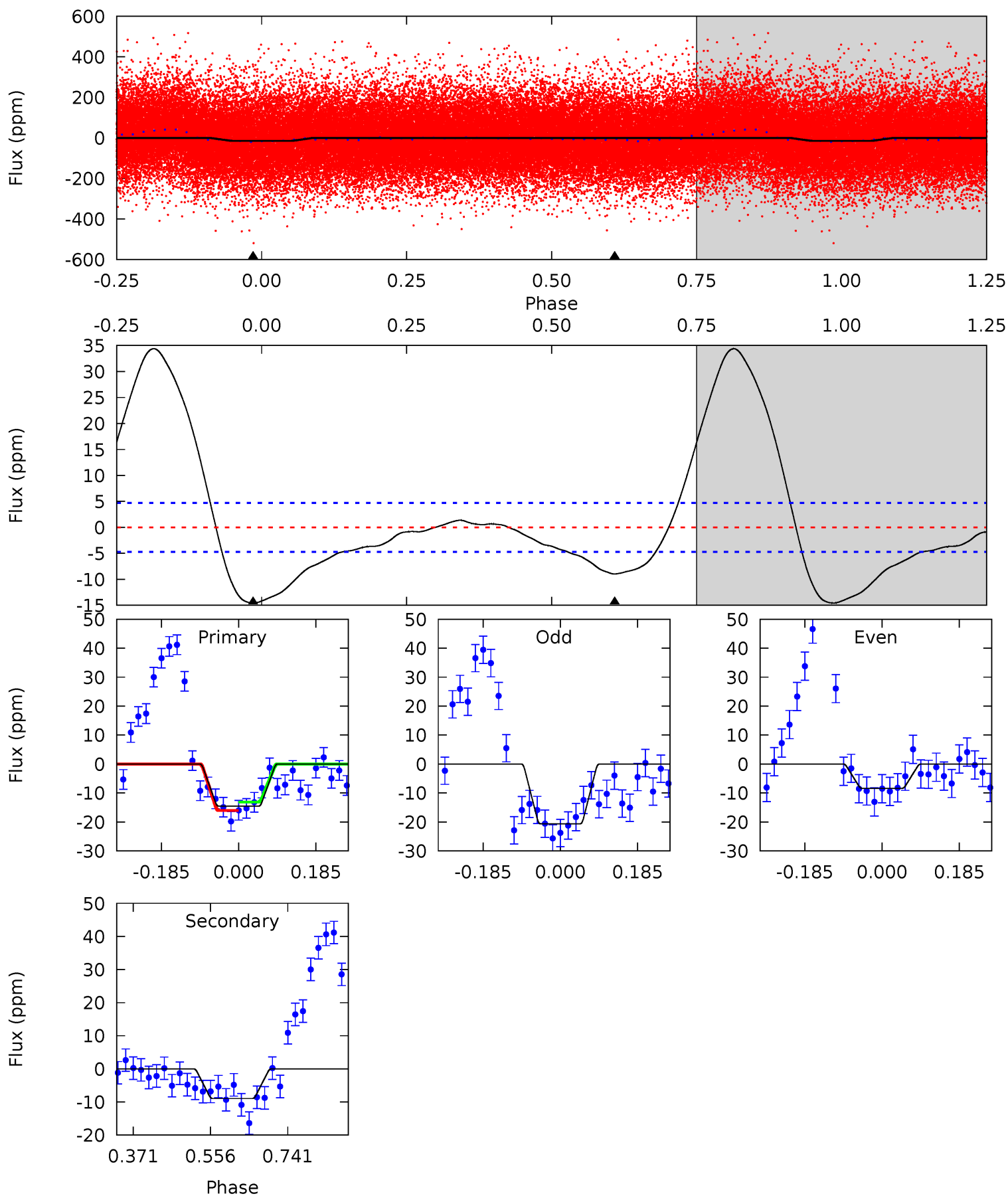
Pri	Sec	Ter	Pos	FA ₁	FA ₂	F _{Red}	Pri-Ter	Pri-Pos	Sec-Ter	Sec-Pos	Odd-Evn	DMM	Shape	TAT
0	0	0	0	1.00	1.00	1.00	0	0	0	0	0	0	0	0



Alt Model-Shift Uniqueness Test

011719549-01, P = 2.422294 Days, E = 129.133602 Days

Pri	Sec	Ter	Pos	FA ₁	FA ₂	F _{Red}	Pri-Ter	Pri-Pos	Sec-Ter	Sec-Pos	Odd-Evn	DMM	Shape	TAT
13.7	8.46	0	0	4.43	1.32	4.85	13.7	13.7	8.46	8.46	5.71	0.97	0.70	1.36



Stellar Parameters For KIC 011719549

	$T_{\text{eff}}(K)$	$\log(g)$	[Fe/H]	R (R_{\odot})	$M(M_{\odot})$	p_{\star} ($\text{g}\cdot\text{cm}^{-3}$)
	11360^{+561}_{-1685}	$3.636^{+0.459}_{-0.081}$	$0.210^{+0.150}_{-0.400}$	$4.712^{+0.419}_{-2.375}$	$3.504^{+0.070}_{-1.012}$	$0.047^{+0.213}_{-0.012}$
	+5%/-15%	+13%/-2%	+71%/-190%	+9%/-50%	+2%/-29%	+451%/-26%
Source	KIC0	KIC0	KIC0	DSEP		

KIC = Kepler Input Catalog; PHO = Photometry; SPE = Spectroscopy; AST = Asteroseismology
 TRA = Transits; DESP = Dartmouth Models; MULT = Multiple Models

Secondary Eclipse Parameters for KIC 011719549-01 / KOI

Detrend	Depth (ppm)	R_p (R_{\oplus})	T_{max} (K)	T_{obs} (K)	A_{obs}
DV	0 ± 1000000	$33.38^{+35.10}_{-23.95}$	6150^{+728}_{-1025}	$-5697^{+127437}_{-77028}$	$-0.768^{+330.018}_{-209.307}$
Alt.	-9 ± 1	$31.39^{+34.33}_{-22.89}$	6148^{+699}_{-1046}	-4444^{+1012}_{-471}	$0.014^{+0.184}_{-0.011}$

T_{max} = Theoretical Maximum Planetary Temperature

T_{obs} = Observed Planetary Temperature (Assuming $A=0.3$)

A_{obs} = Observed Albedo (Assuming $T=0$)

If a secondary eclipse is present, the system is likely an EB if $T_{\text{obs}} \gg T_{\text{max}}$ AND $A_{\text{obs}} \gg 1.0$

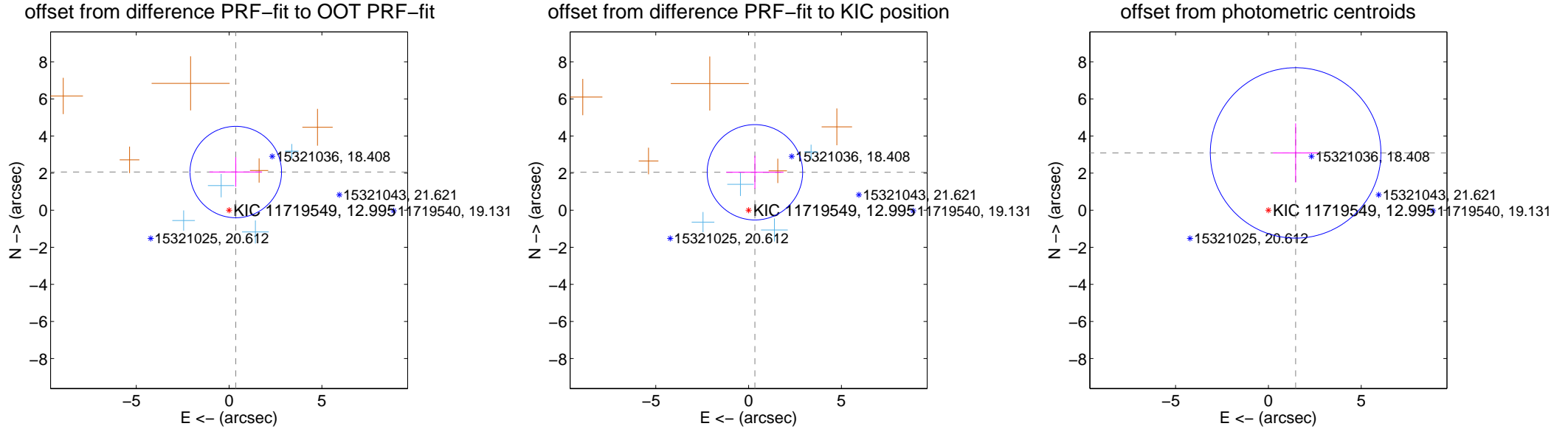
DV Centroid Data

Supplemental centroid analysis for 011719549-01. Kepler magnitude: 12.99. Transit SNR -1.00

There are 4 quarters with good PRF difference image offsets

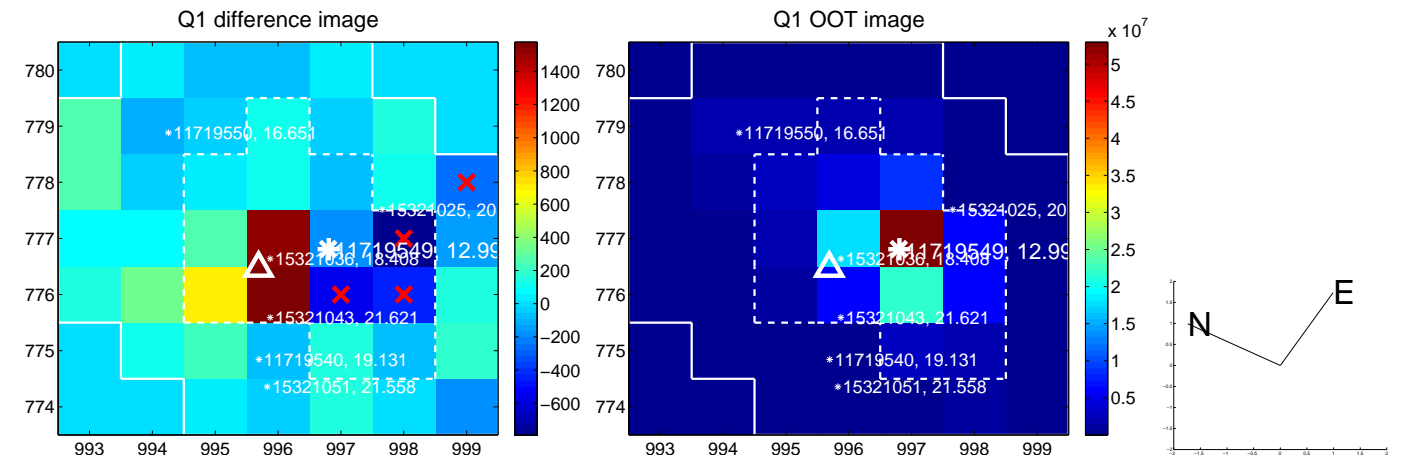
The direct PRF centroid is offset from the target star catalog position by about 0.02 arcsec

	Distance in arcsec	Distance / σ	Δ RA	Δ Dec
PRF-fit source offset from OOT	2.089 ± 0.822	2.54	-0.361 ± 1.416	2.058 ± 0.796
PRF-fit source offset from KIC position	2.073 ± 0.857	2.42	-0.340 ± 1.543	2.045 ± 0.888
photometric centroid source offset	3.42 ± 1.53	2.23	-1.47 ± 1.22	3.09 ± 1.59

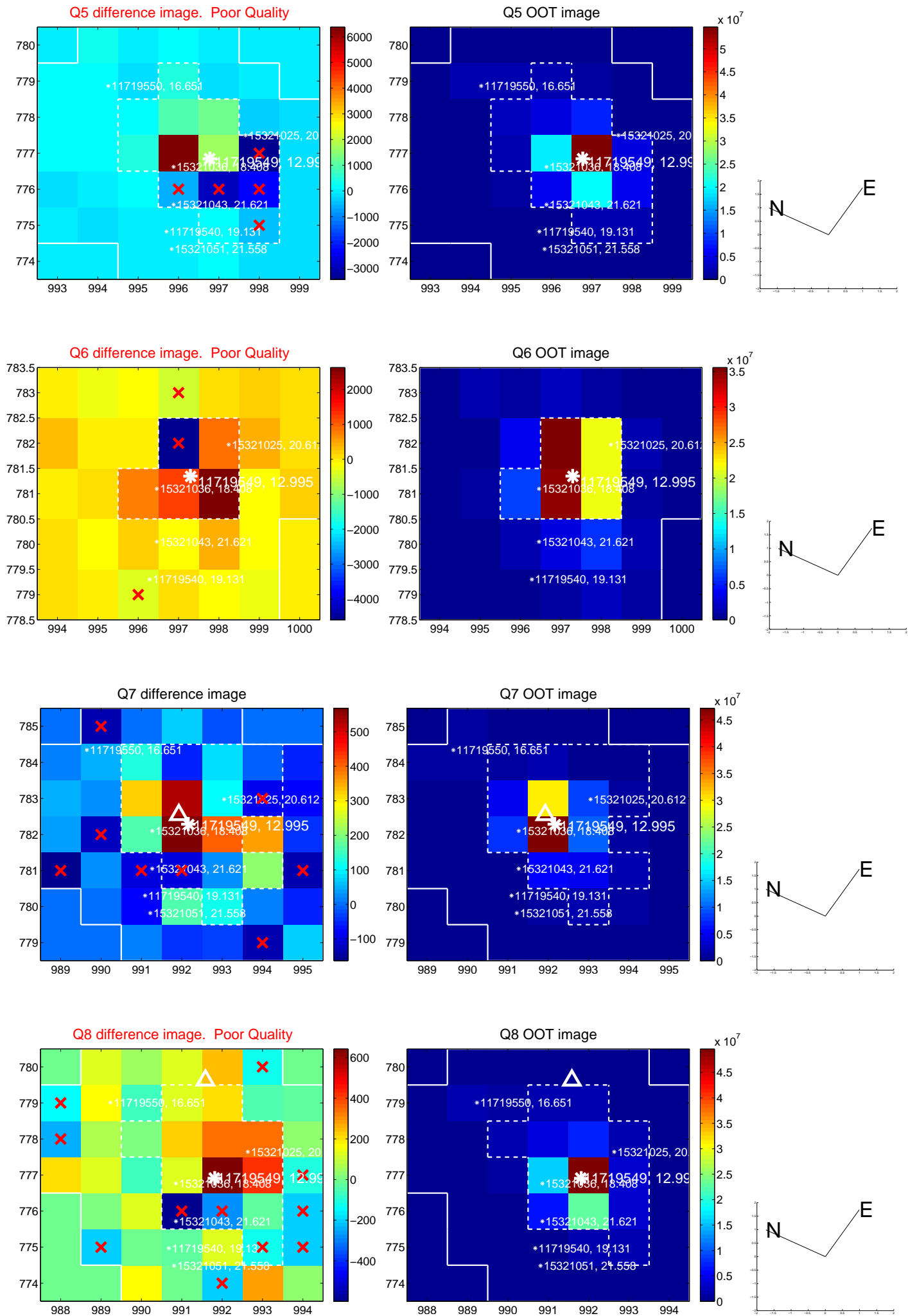


Centroid source offsets from the target star reconstructed from PRF and photometric centroids. **Sky blue crosses: good quarterly centroid offsets; Vermillion crosses: bad quarterly centroid offsets**; magenta cross: average over quarters. Length of the crosses: one- σ uncertainty. Blue circle: three- σ . Red *: target star. Blue *: Other stars. Text next to a star gives its KIC ID and kepmag. KIC IDs > 15,000,000 are from the UKIRT catalog.

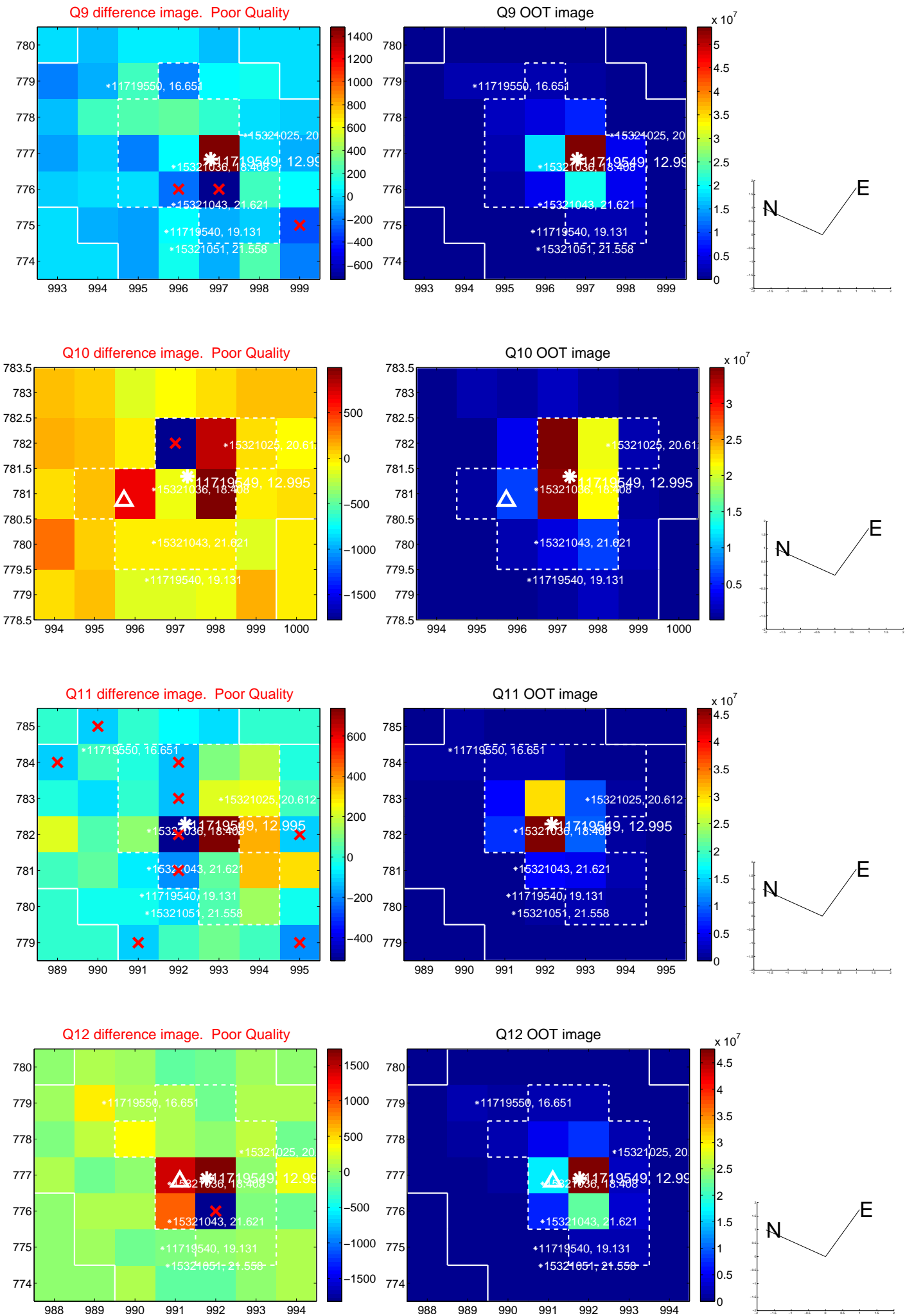
white \times : KIC target position; +: OOT centroid; \triangle : difference centroid. red \times : large negative pixel value.



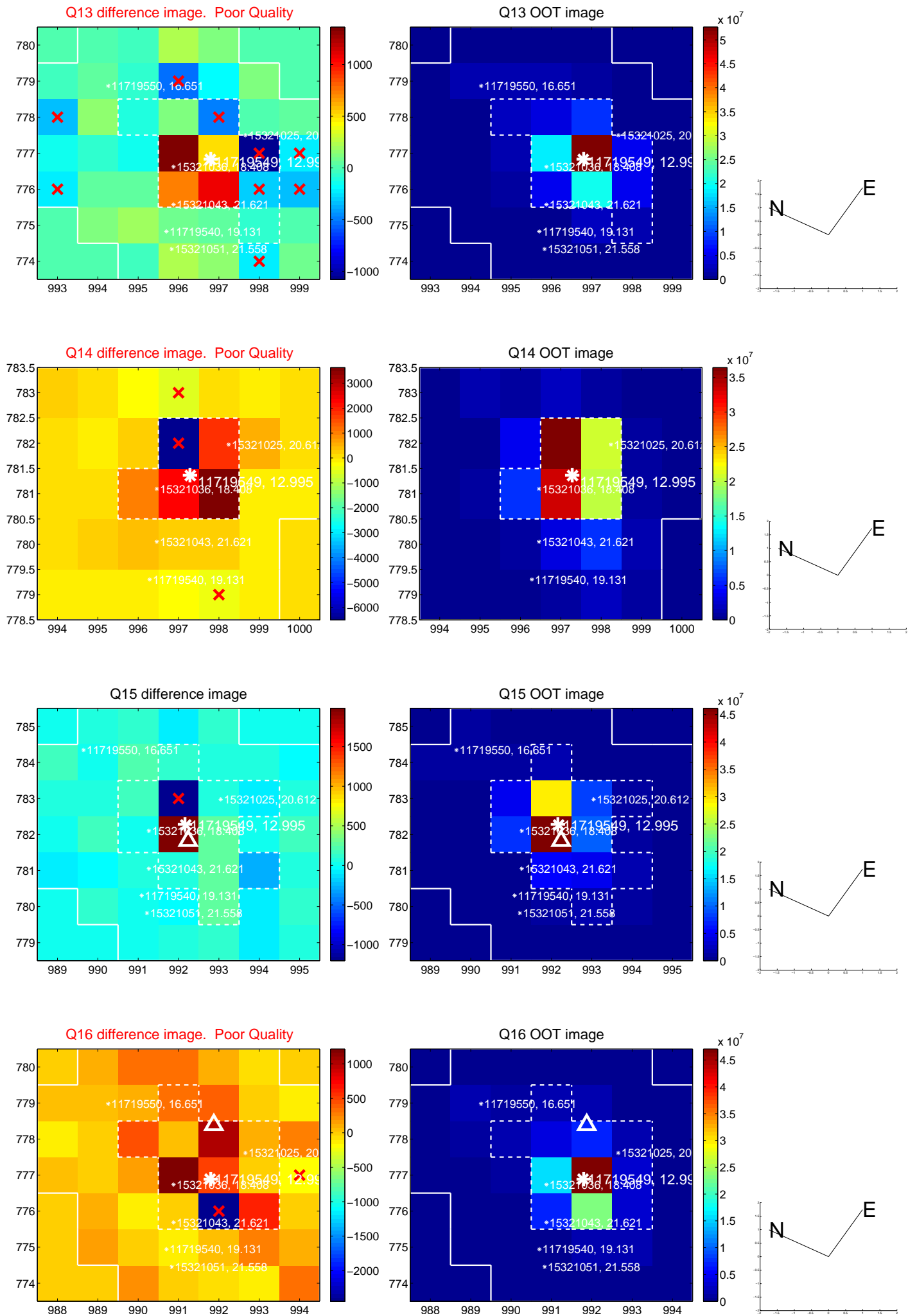
white \times : KIC target position; +: OOT centroid; \triangle : difference centroid. red \times : large negative pixel value.



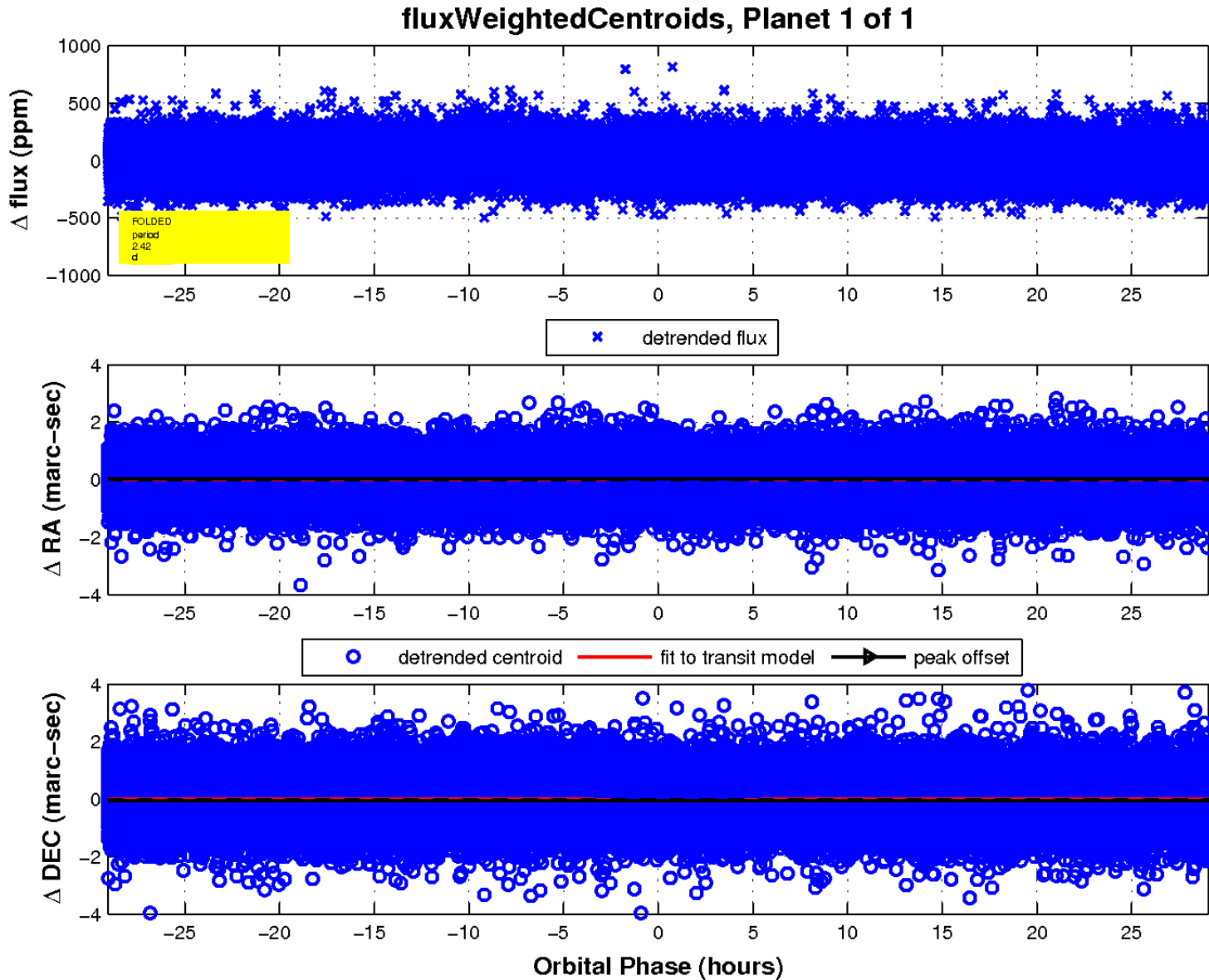
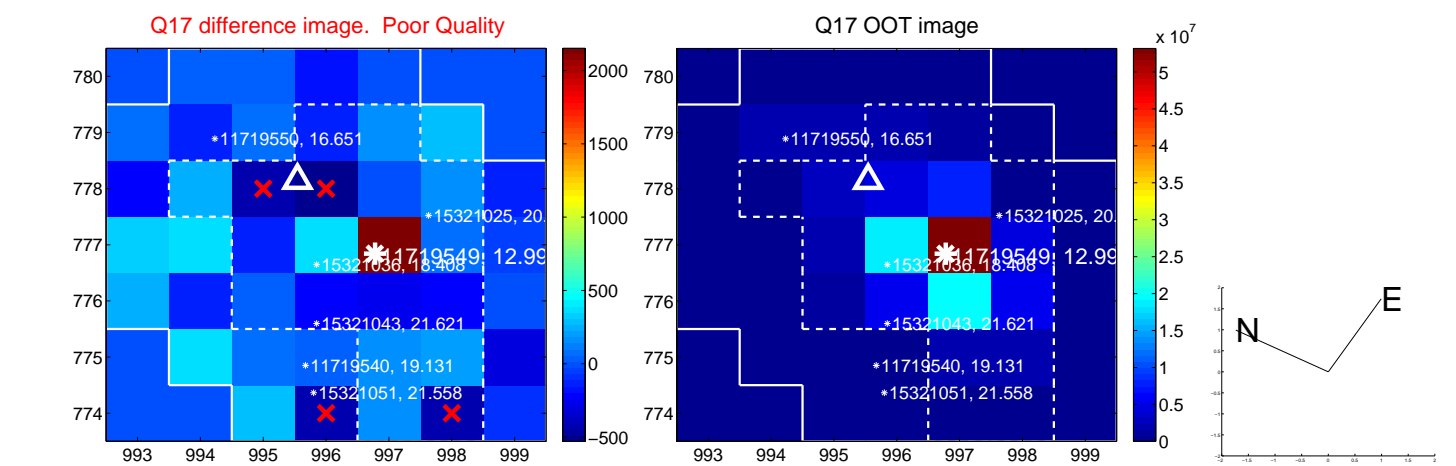
white \times : KIC target position; +: OOT centroid; \triangle : difference centroid. red \times : large negative pixel value.



white \times : KIC target position; +: OOT centroid; \triangle : difference centroid. red \times : large negative pixel value.



white \times : KIC target position; $+$: OOT centroid; \triangle : difference centroid. red \times : large negative pixel value.



UKIRT Image

Declination

