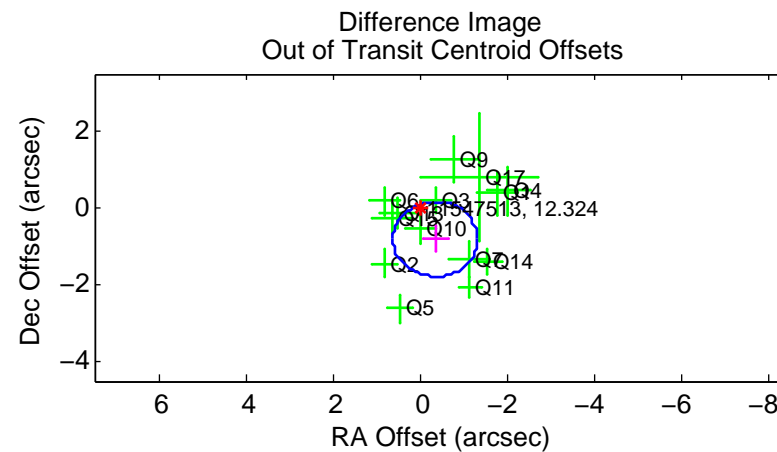
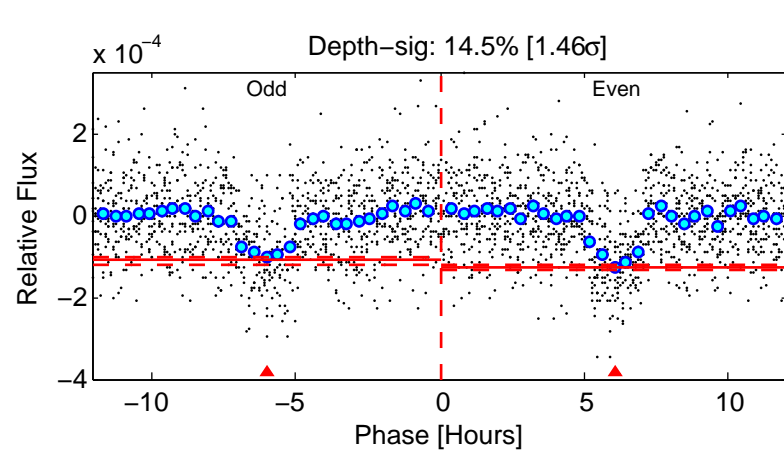
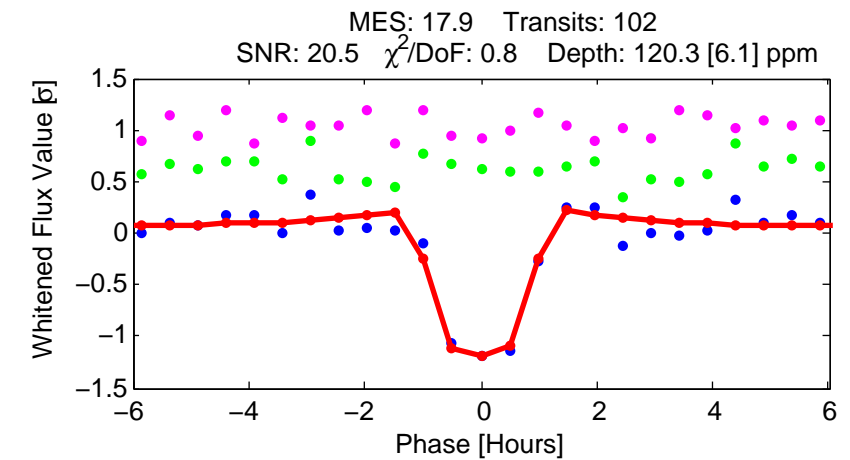
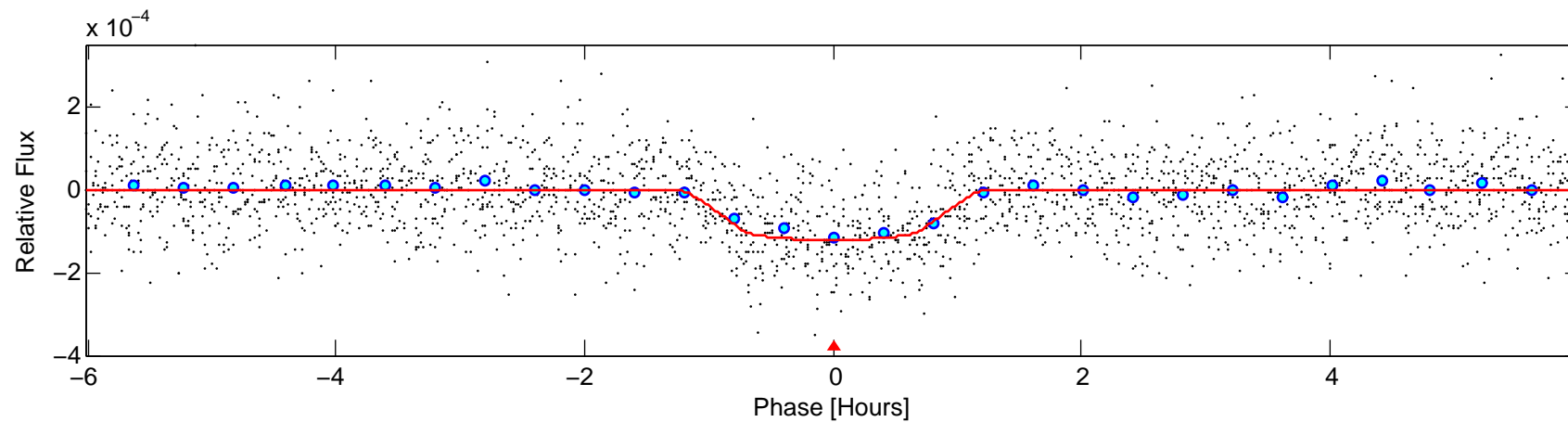
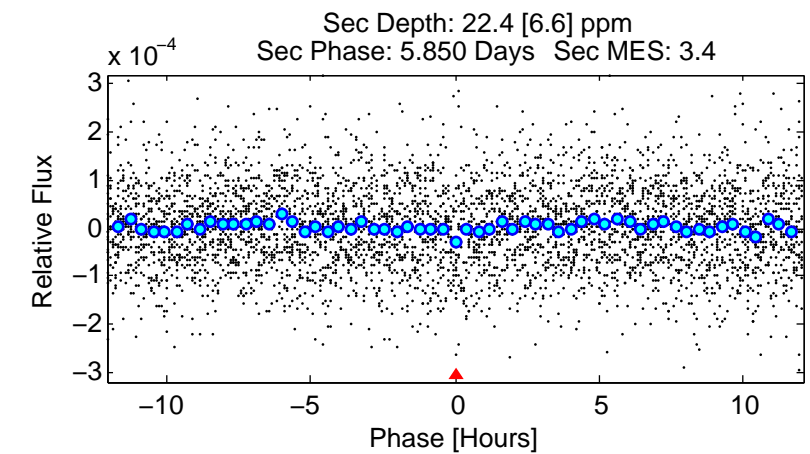
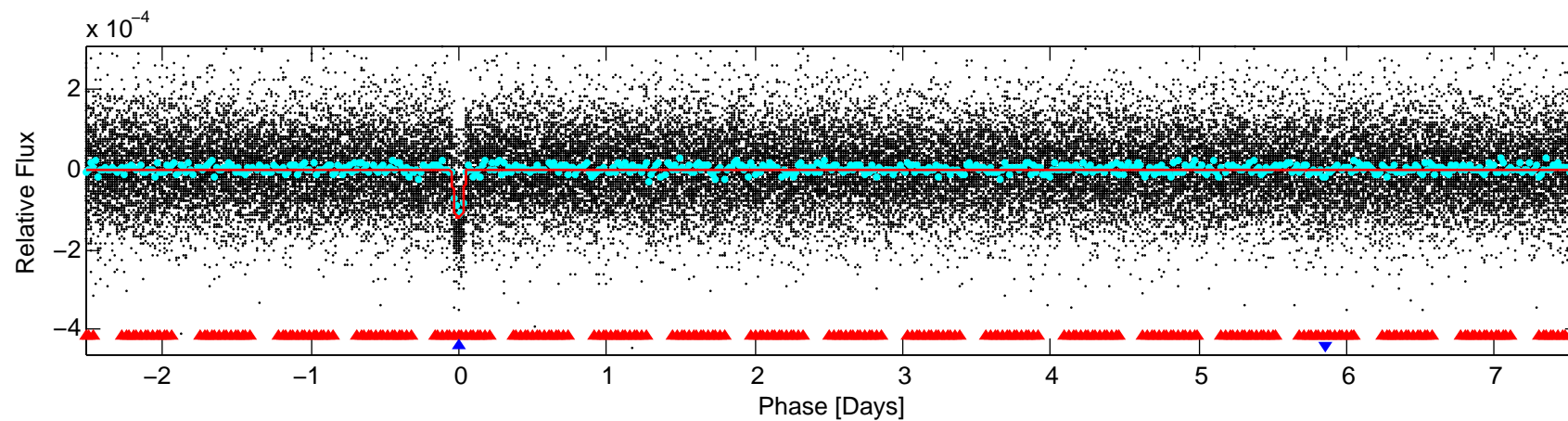
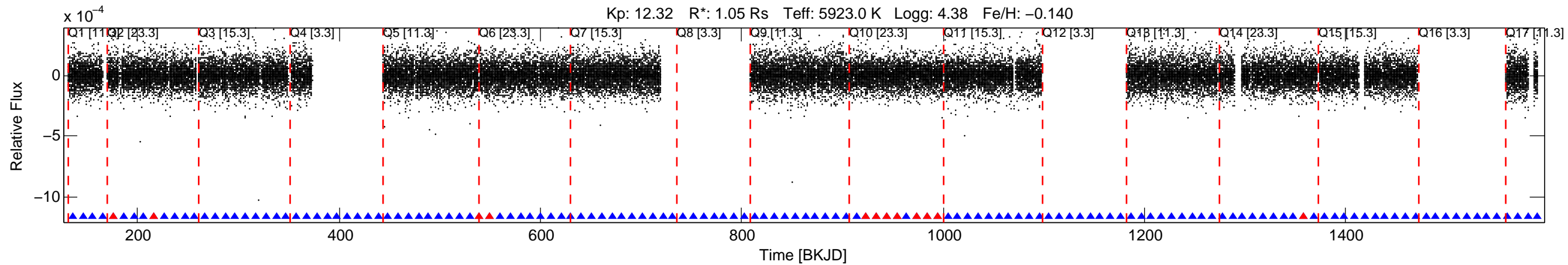


KIC: 11547513 Candidate: 2 of 2 Period: 10.106 d
 KOI: K00295.02 Name: Kepler-134c Corr: 0.993



DV Fit Results:

Period = 10.10575 [0.00003] d
 Epoch = 135.5091 [0.0021] BKJD
 Rp/R* = 0.0118 [0.0041]
 a/R* = 18.83 [32.84]
 b = 0.89 [0.43]
 Seff = 149.81 [34.52]
 Teq = 892 [51] K
 Rp = 1.35 [0.52] Re
 a = 0.0904 [0.0126] AU
 Ag = 55.25 [43.43] [1.25σ]
 Teffp = 3760 [716] K [4.00σ]

DV Diagnostic Results:

ShortPeriod-sig: 100.0% [31.27σ]
 LongPeriod-sig: N/A
 ModelChiSquare2-sig: 99.9%
 ModelChiSquareGof-sig: 100.0%
 Bootstrap-pfa: 9.65e-68
 RollingBand-fgt: 0.87 [82/94]
 GhostDiagnostic-chr: 3.54
 Centroid-sig: 1.7%
 Centroid-so: 1.184 arcsec [2.03σ]
 OotOffset-rm: 0.877 arcsec [2.71σ]
 KicOffset-rm: 0.717 arcsec [2.23σ]
 OotOffset-st: 4/4/1/5 [14]
 KicOffset-st: 4/4/1/5 [14]
 DiffImageQuality-fgm: 1.00 [14/14]
 DiffImageOverlap-fno: 1.00 [14/14]