

KIC 011456839

Q1-17 DR25 TCE Parameters

| TCE | Run Type | KOI? | Period (Days) | Epoch (BKJD) | Depth (ppm) | Duration (Hours) | MES | SNR | R_{\star} (R_{\odot}) | T_{\star} (K) | R_p (R_{\oplus}) | S_p (S_{\oplus}) |
|--------------|----------|---------|---------------|--------------|-------------|------------------|-----|-----|-----------------------------|-----------------|------------------------|------------------------|
| 011456839-01 | OBS | 8225.01 | 190.791987 | 213.630919 | 1166.6 | 4.096 | 9.0 | 5.8 | 19.81 | 5013 | 70.97 | 226.90 |

Robovetter Results

| TCE | Run Type | Disp | Score | N | S | C | E | Comments |
|--------------|----------|------|-------|---|---|---|---|-----------------------------------|
| 011456839-01 | OBS | FP | 0.00 | 1 | 0 | 0 | 0 | MOD_NONUNIQ_DV—INCONSISTENT_TRANS |

Notes: OBS = Observed. INJ = Injected. INV = Inverted. SCR = Scrambled.

N = Not Transit-Like. S = Stellar Eclipse. C = Centroid Offset. E = Ephemeris Match.

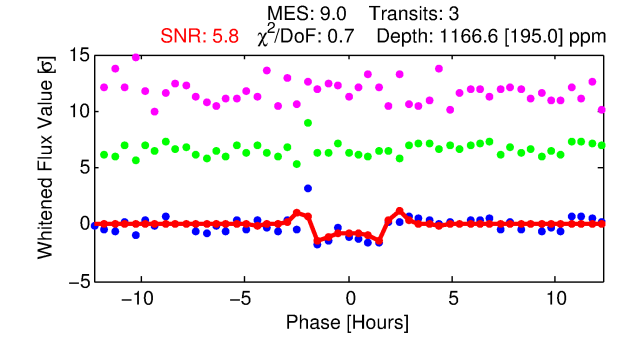
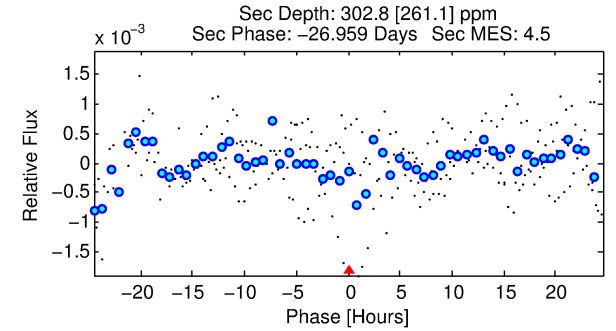
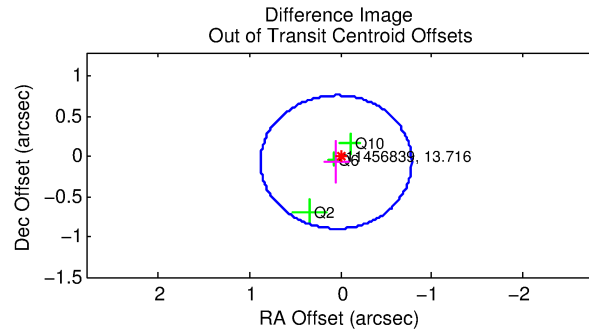
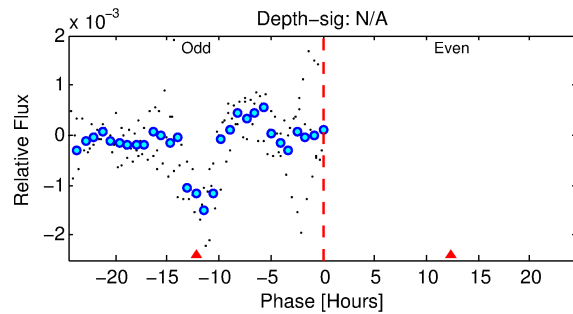
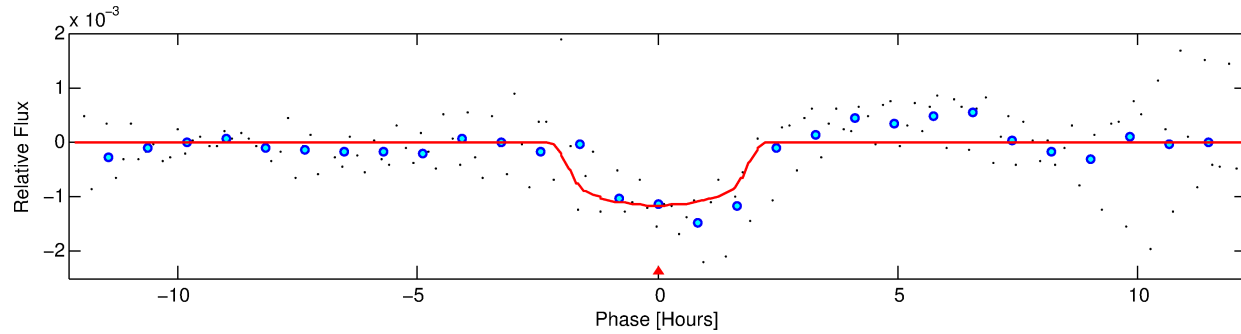
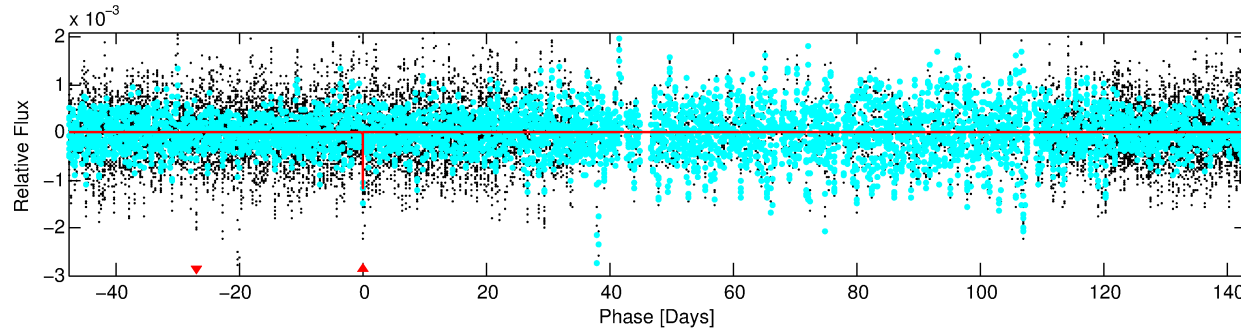
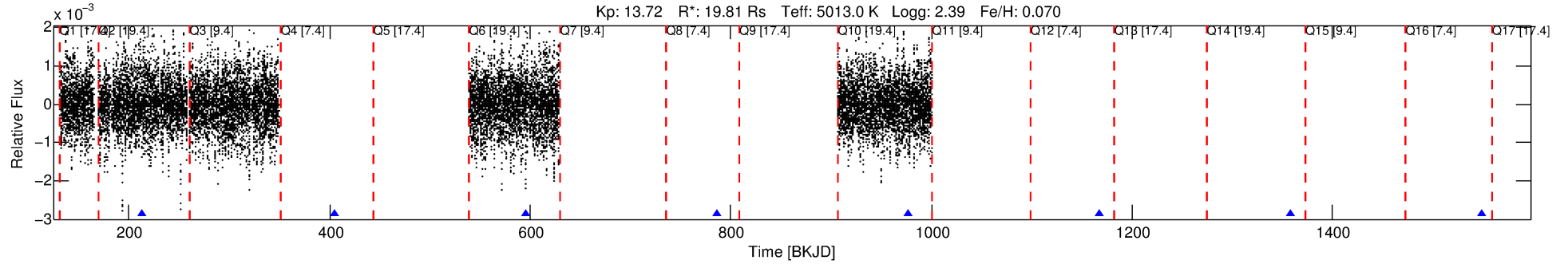
See http://exoplanetarchive.ipac.caltech.edu/docs/API_kepcandidate_columns.html#proj_disp_col for comment definitions.

Ephemeris Match Information For 011456839-01

No Significant Match Found

DV One-Page Summary

KIC: 11456839 Candidate: 1 of 1 Period: 190.792 d



DV Fit Results:

Period = 190.79199 [0.00151] d
Epoch = 213.6309 [0.0038] BKJD
Rp/R* = 0.0328 [0.0176]
a/R* = 285.39 [521.82]
b = 0.65 [1.65]
Seff = 226.90 [78.46]
Teq = 990 [86] K
Rp = 70.96 [45.87] Re
a = 0.9894 [0.2407] AU
Ag = 32.38 [45.24] [0.69σ]
Teffp = 3650 [1273] K [2.08σ]

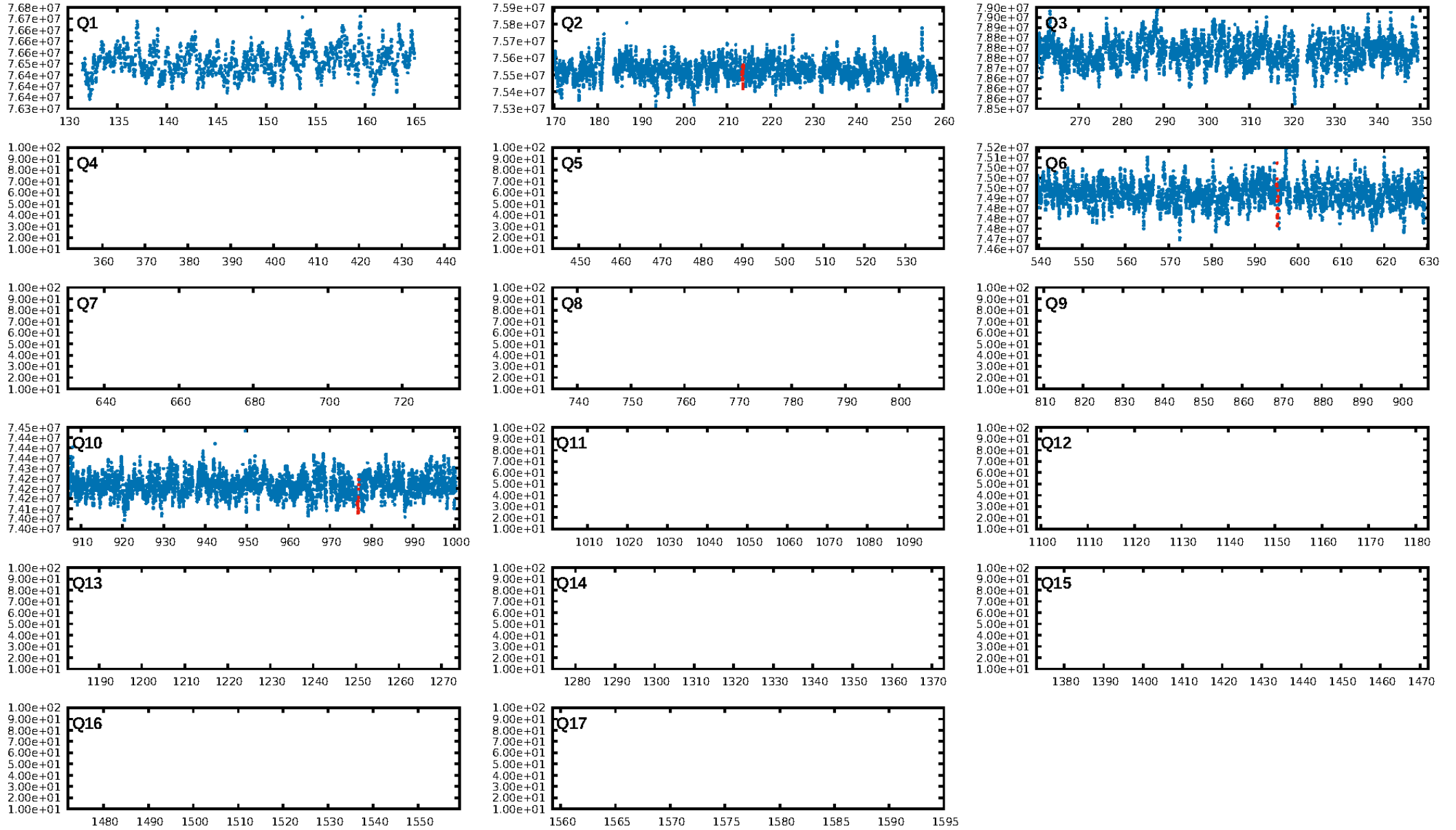
DV Diagnostic Results:

ShortPeriod-sig: N/A
LongPeriod-sig: N/A
ModelChiSquare2-sig: 19.5%
ModelChiSquareGof-sig: 97.4%
Bootstrap-pfa: 1.05e-13
RollingBand-fgt: 1.00 [3/3]
GhostDiagnostic-chr: -52.3
Centroid-sig: 8.8%
Centroid-so: 0.640 arcsec [1.37σ]
OotOffset-rm: 0.082 arcsec [0.30σ]
KicOffset-rm: 0.129 arcsec [0.60σ]
OotOffset-st: 3/0/0/0 [3]
KicOffset-st: 3/0/0/0 [3]
DiffImageQuality-fgm: 1.00 [3/3]
DiffImageOverlap-fno: 1.00 [3/3]

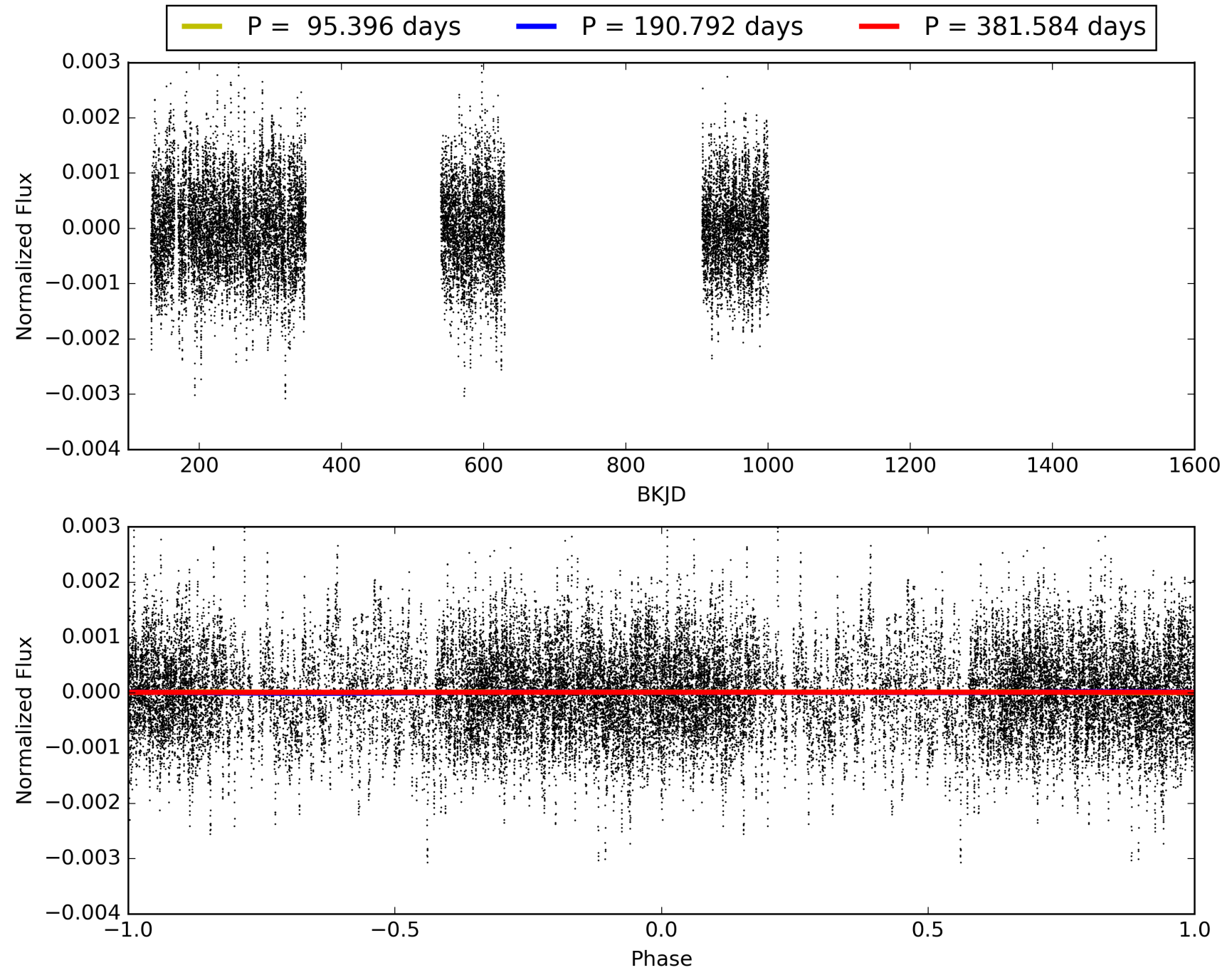
Software Revision: svn+ssh://murzim/repo/soc/tags/release/9.3.42@60958 -- Date Generated: 28-Jan-2016 18:56:21 Z

This Data Validation Report Summary was produced in the Kepler Science Operations Center Pipeline at NASA Ames Research Center

TCE 011456839-01, PDC Light Curves

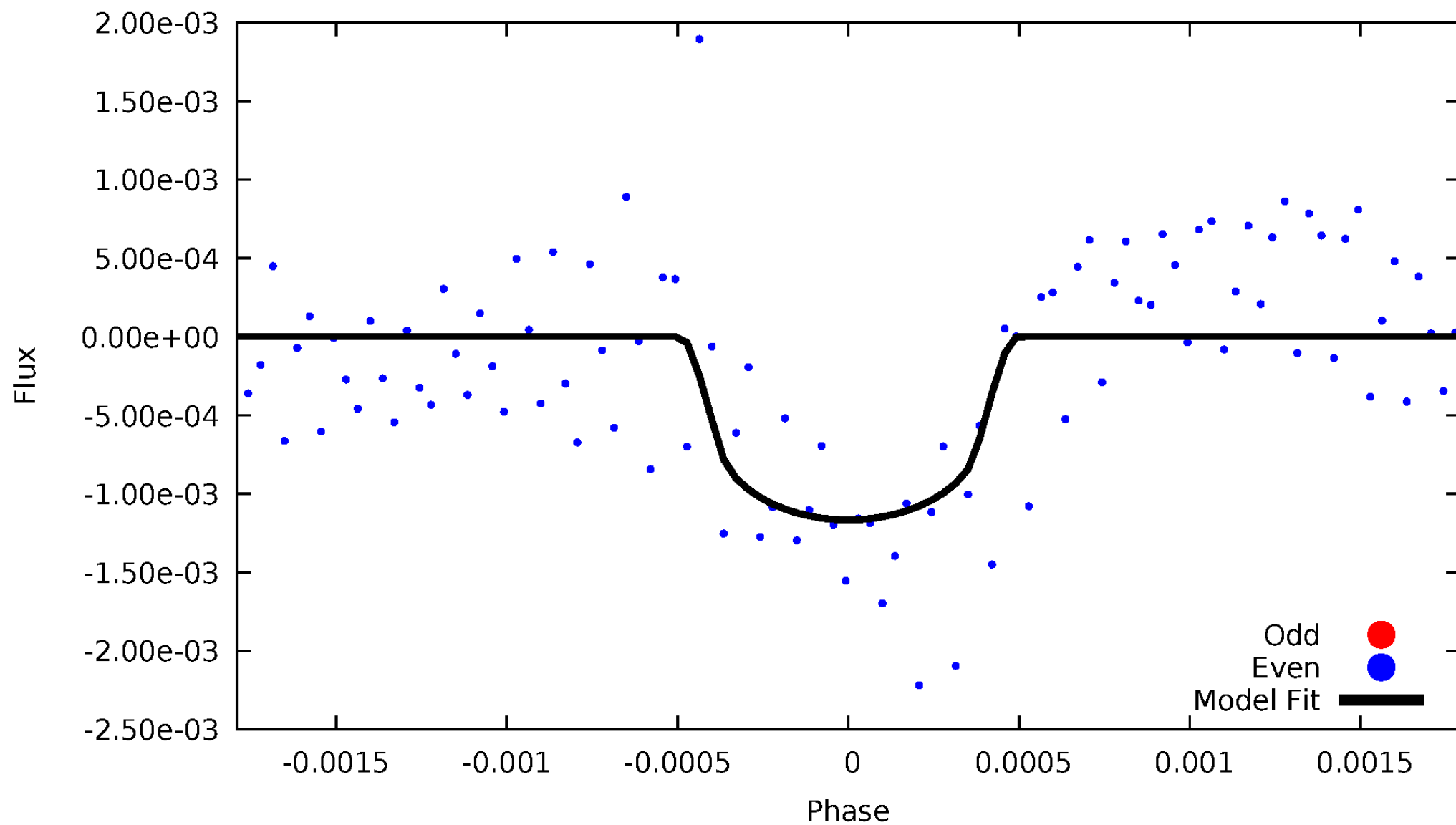


TCE 011456839-01



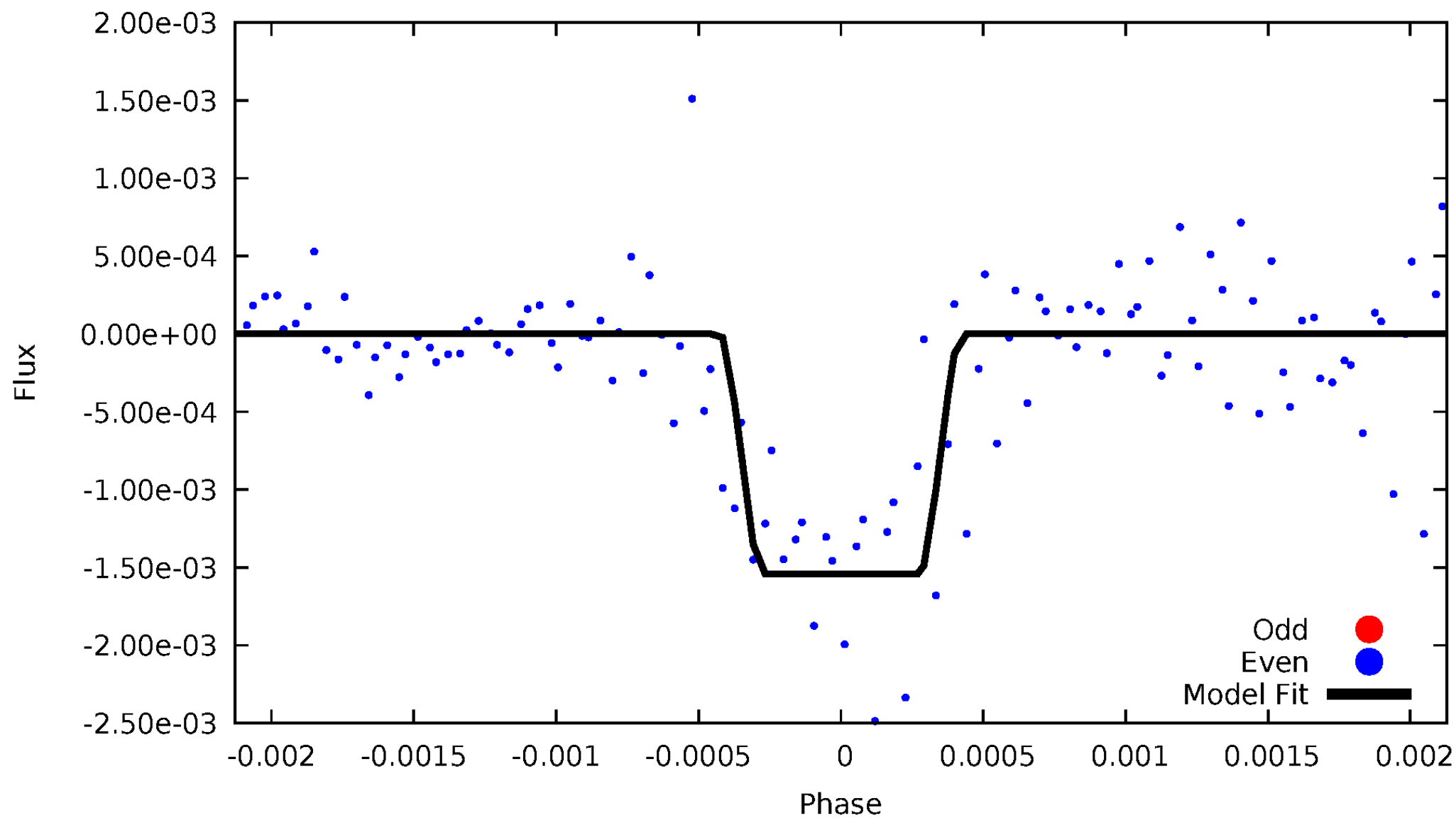
DV Odd/Even

TCE 011456839-01



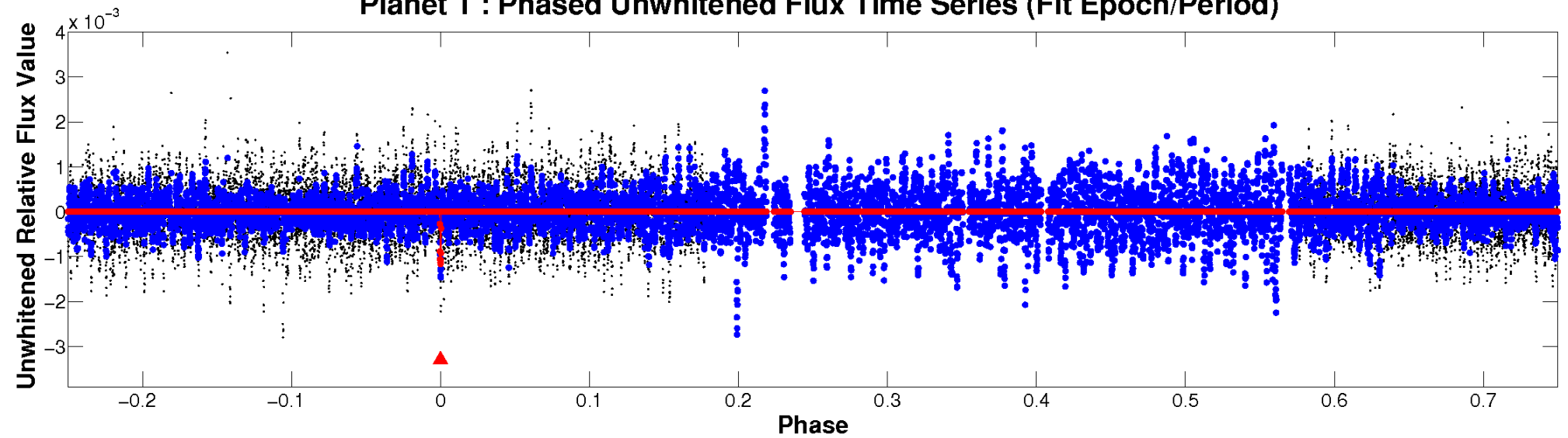
ALT Odd/Even

TCE 011456839-01

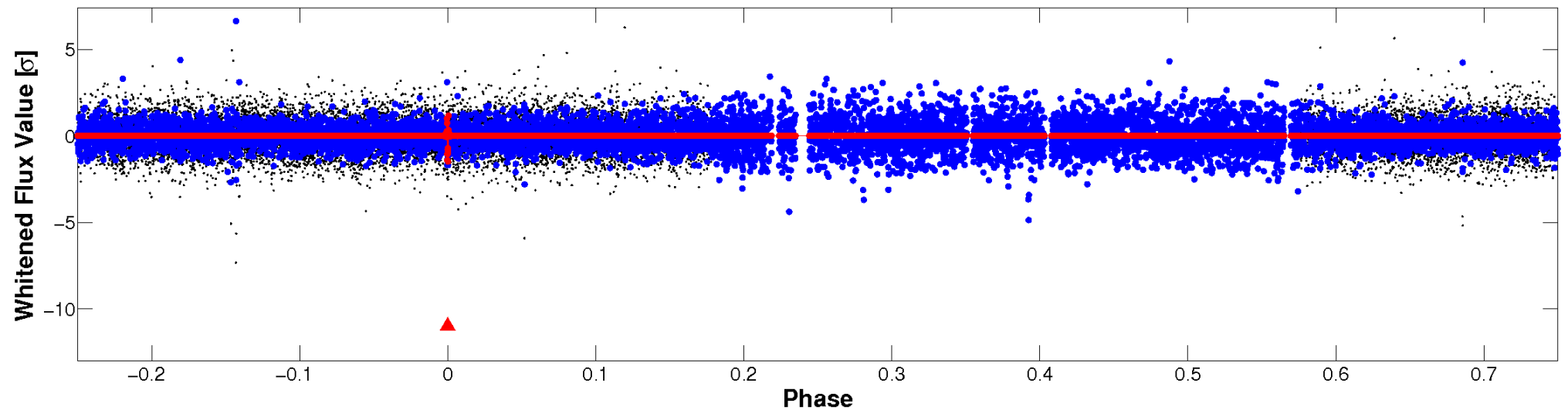


Non-Whitened Vs. Whitened Light Curve

Planet 1 : Phased Unwhitened Flux Time Series (Fit Epoch/Period)

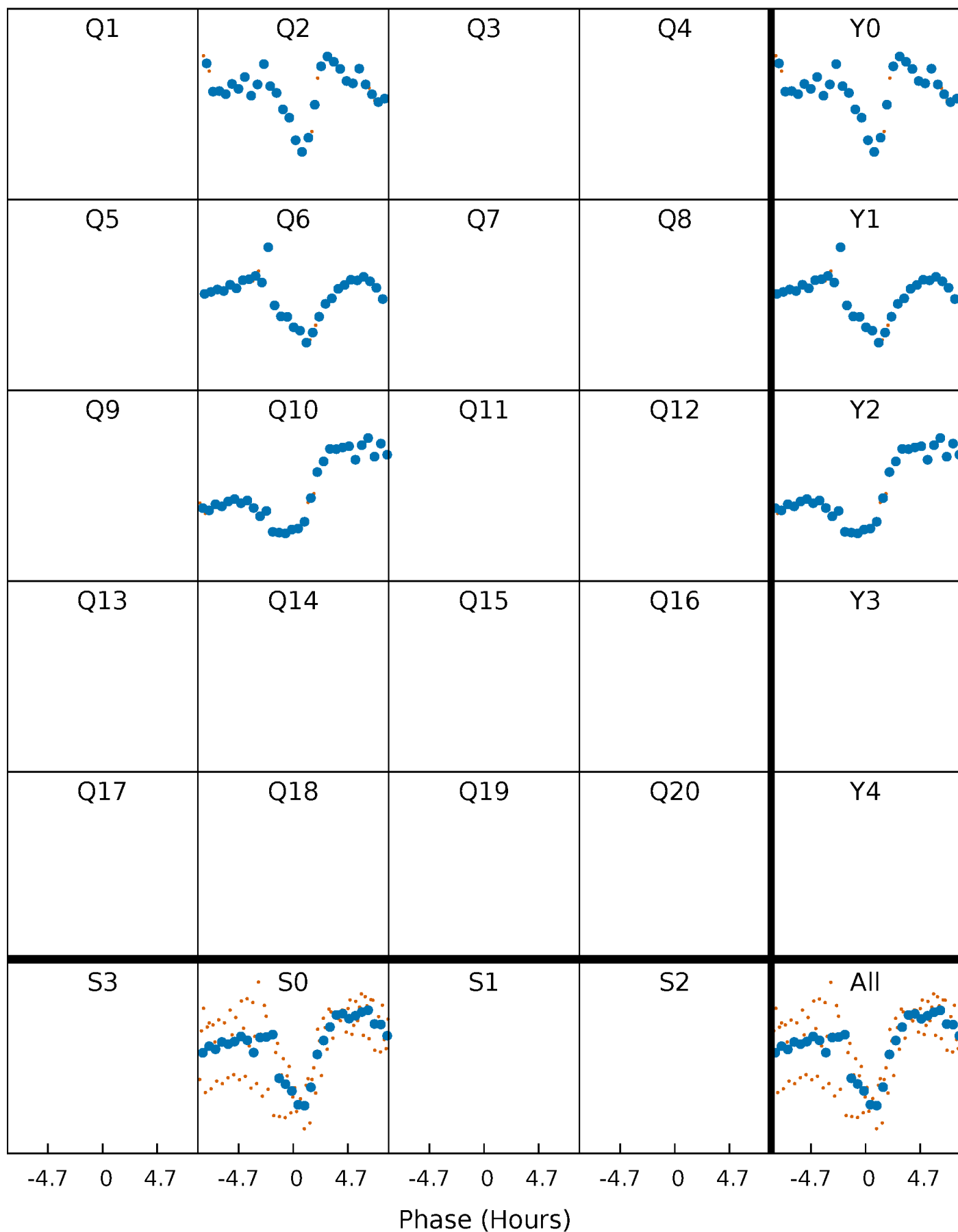


Planet 1 : Phased Whitened Flux Time Series (Fit Epoch/Period)



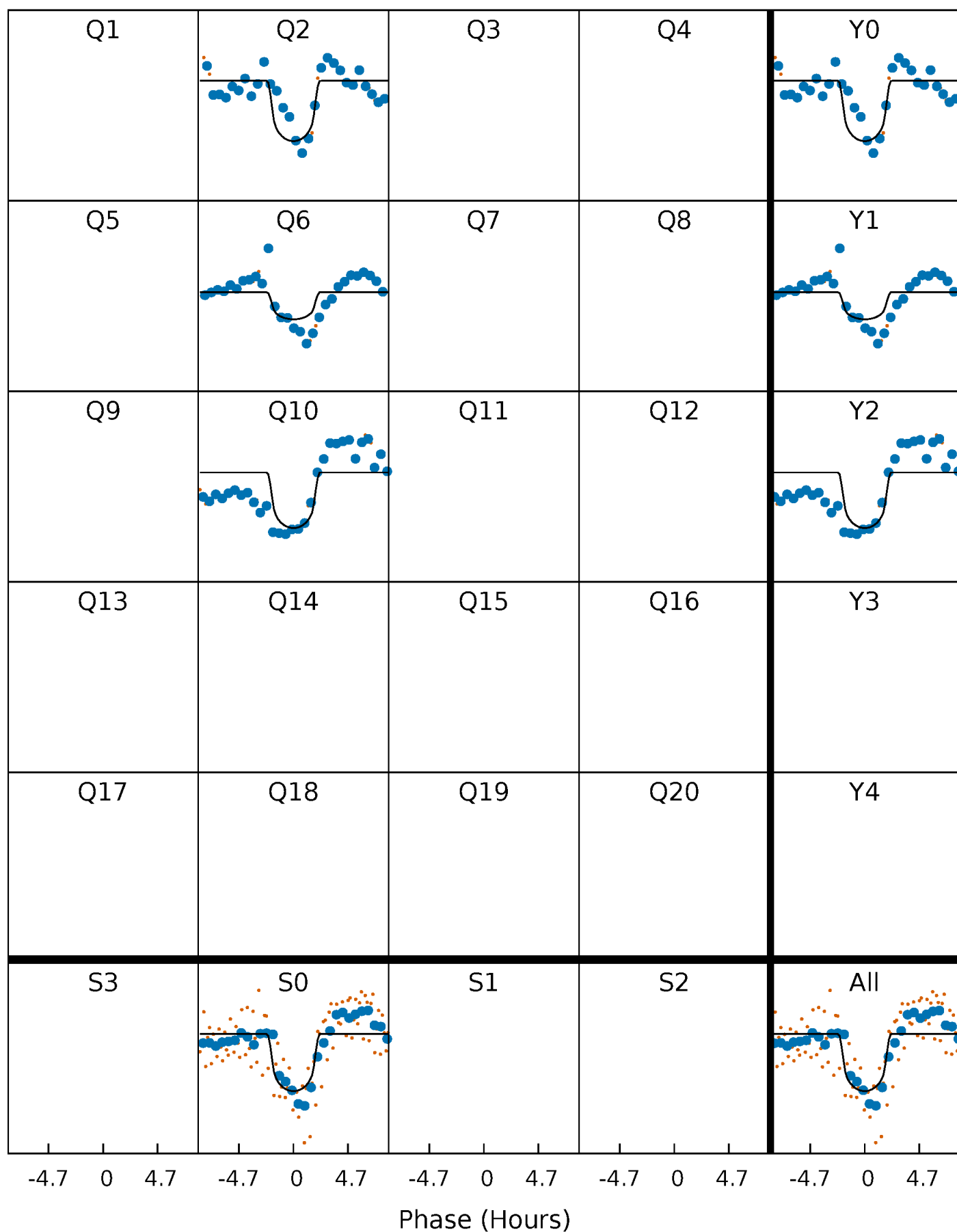
PDC Quarter-Phased Transit Curves

TCE 011456839-01 P=190.791987 Days $T_0=213.630919$ (BKJD)



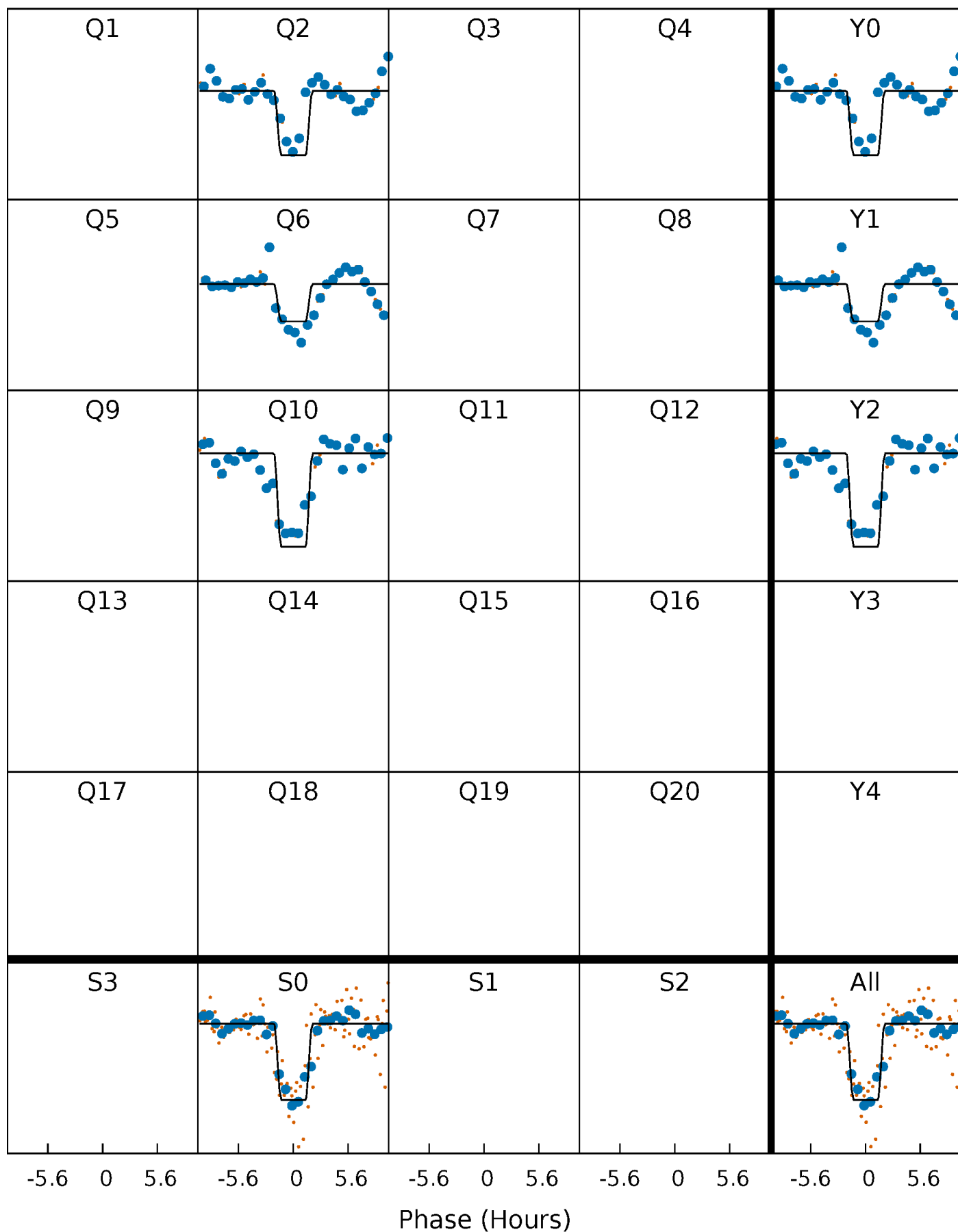
DV Quarter-Phased Transit Curves

TCE 011456839-01 P=190.791987 Days $T_0=213.630919$ (BKJD)



Alt. Detrend Quarter-Phased Transit Curves

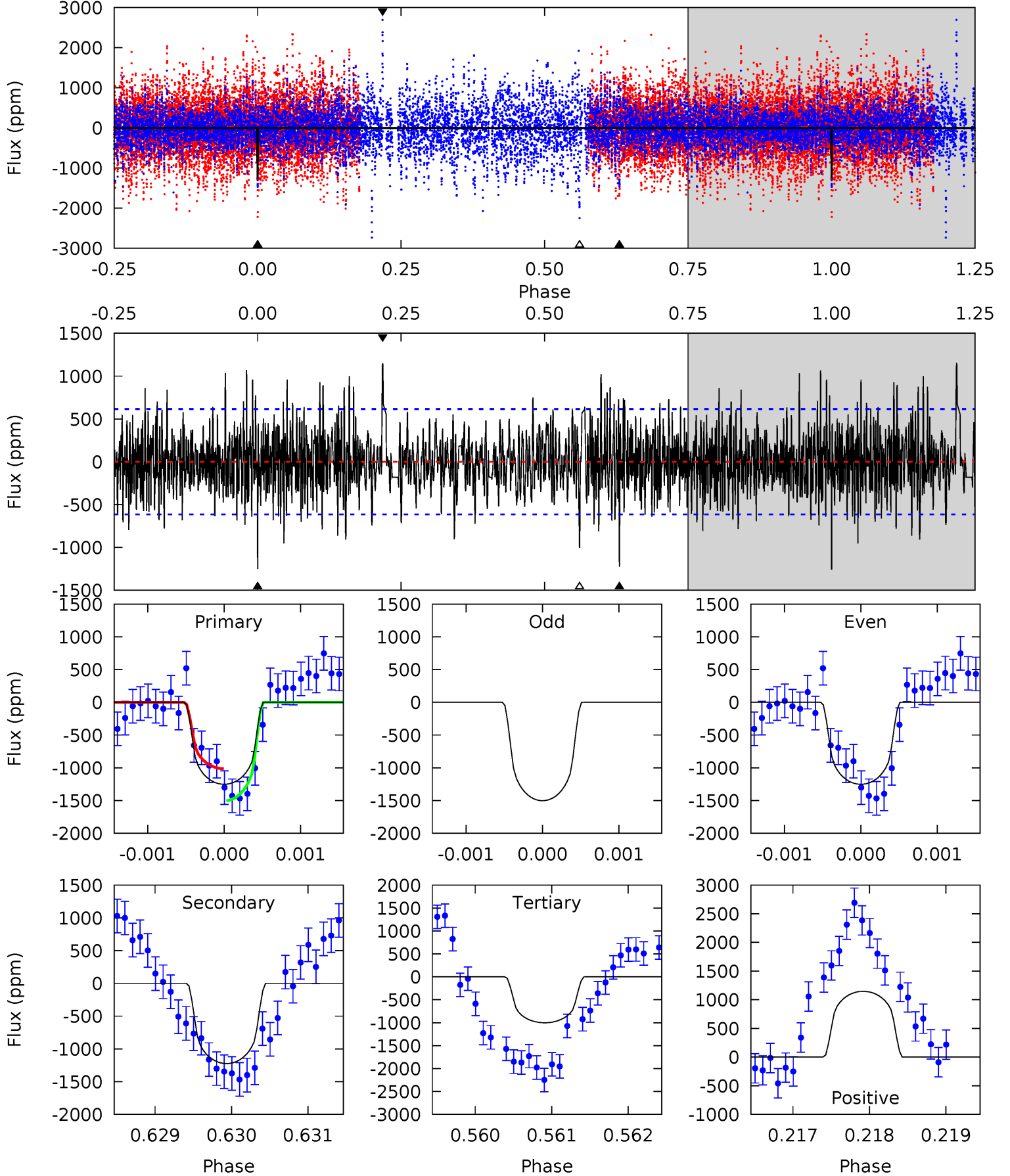
TCE 011456839-01 P=190.784455 Days $T_0=213.662553$ (BKJD)



DV Model-Shift Uniqueness Test

011456839-01, $P = 190.791987$ Days, $E = 22.838932$ Days

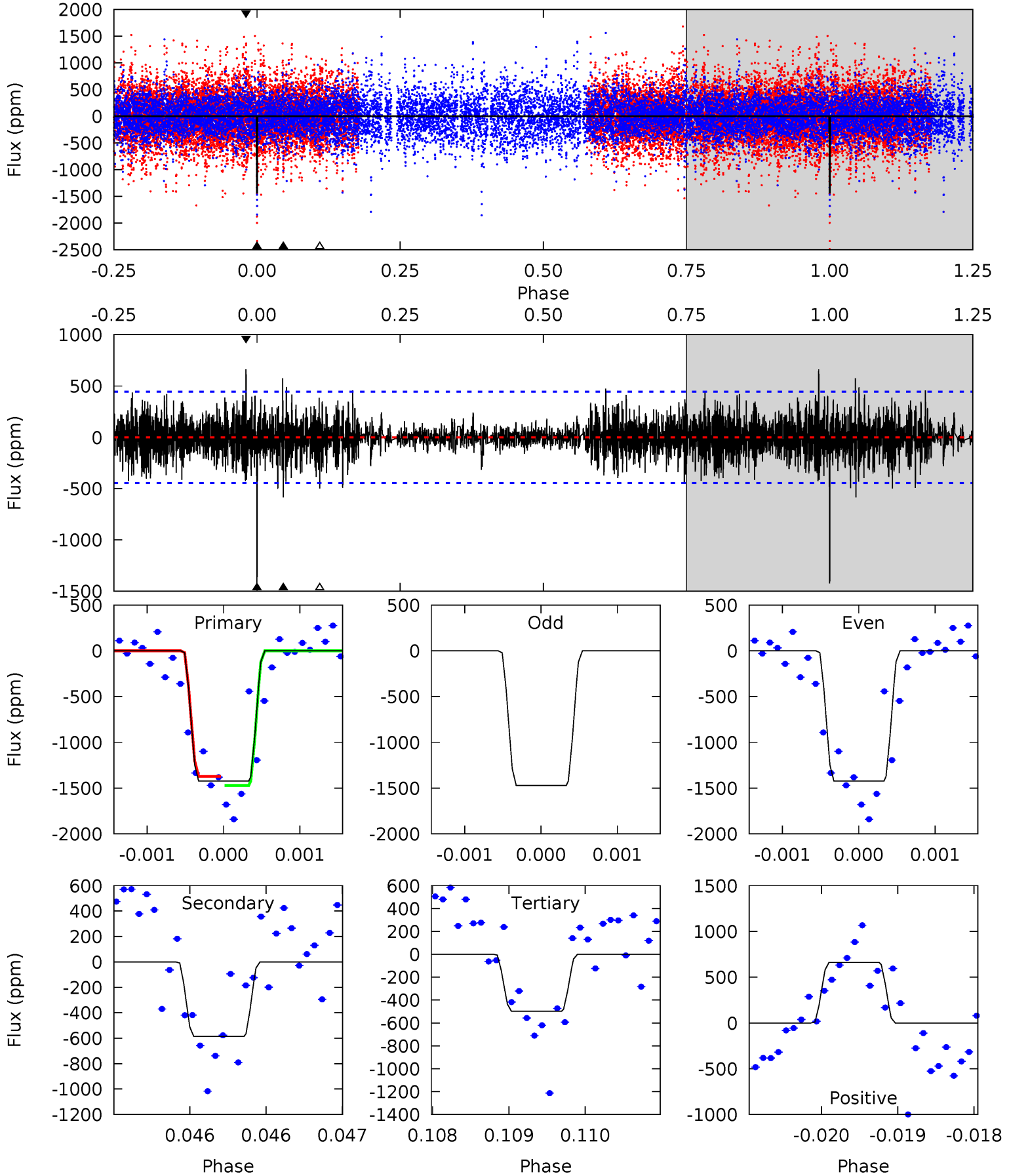
| Pri | Sec | Ter | Pos | FA ₁ | FA ₂ | F _{Red} | Pri-Ter | Pri-Pos | Sec-Ter | Sec-Pos | Odd-Evn | DMM | Shape | TAT |
|------|------|------|------|-----------------|-----------------|------------------|---------|---------|---------|---------|---------|------|-------|------|
| 11.1 | 10.9 | 8.90 | 10.2 | 5.46 | 3.30 | 2.61 | 2.22 | 0.93 | 1.97 | 0.68 | 1.28 | 1.01 | 0.48 | 2.17 |



Alt Model-Shift Uniqueness Test

011456839-01, $P = 190.784455$ Days, $E = 22.878098$ Days

| Pri | Sec | Ter | Pos | FA ₁ | FA ₂ | F _{Red} | Pri-Ter | Pri-Pos | Sec-Ter | Sec-Pos | Odd-Evn | DMM | Shape | TAT |
|------|------|------|------|-----------------|-----------------|------------------|---------|---------|---------|---------|---------|------|-------|------|
| 17.6 | 7.22 | 6.13 | 8.16 | 5.49 | 3.35 | 1.78 | 11.4 | 9.39 | 1.09 | -0.94 | 0.36 | 1.12 | 0.32 | 0.61 |



Stellar Parameters For KIC 011456839

| | $T_{\text{eff}}(K)$ | $\log(g)$ | [Fe/H] | $R (R_{\odot})$ | $M(M_{\odot})$ | $p_{\star} (\text{g}\cdot\text{cm}^{-3})$ |
|--------|----------------------|---------------------------|---------------------------|----------------------------|---------------------------|---|
| | 5013^{+100}_{-301} | $2.394^{+0.039}_{-0.024}$ | $0.070^{+0.150}_{-0.500}$ | $19.813^{+0.797}_{-7.176}$ | $3.549^{+0.071}_{-2.025}$ | $0.001^{+0.000}_{-0.000}$ |
| | +2%/-6% | +2%/-1% | +214%/-714% | +4%/-36% | +2%/-57% | +64%/-8% |
| Source | PHO1 | AST9 | KIC0 | DSEP | | |

KIC = Kepler Input Catalog; PHO = Photometry; SPE = Spectroscopy; AST = Asteroseismology
 TRA = Transits; DESP = Dartmouth Models; MULT = Multiple Models

Secondary Eclipse Parameters for KIC 011456839-01 / KOI 8225.01

| Detrend | Depth (ppm) | $R_p (R_{\oplus})$ | $T_{\text{max}} (K)$ | $T_{\text{obs}} (K)$ | A_{obs} |
|---------|-----------------|---------------------------|----------------------|-----------------------|--------------------|
| DV | -1224 ± 113 | $71.40^{+35.54}_{-33.67}$ | 1375^{+40}_{-85} | 5042^{+1721}_{-789} | 126^{+314}_{-70} |
| Alt. | -586 ± 81 | $82.94^{+38.16}_{-37.31}$ | 1380^{+35}_{-83} | 4117^{+1093}_{-529} | 45^{+103}_{-24} |

T_{max} = Theoretical Maximum Planetary Temperature

T_{obs} = Observed Planetary Temperature (Assuming $A=0.3$)

A_{obs} = Observed Albedo (Assuming $T=0$)

If a secondary eclipse is present, the system is likely an EB if $T_{\text{obs}} \gg T_{\text{max}}$ AND $A_{\text{obs}} \gg 1.0$

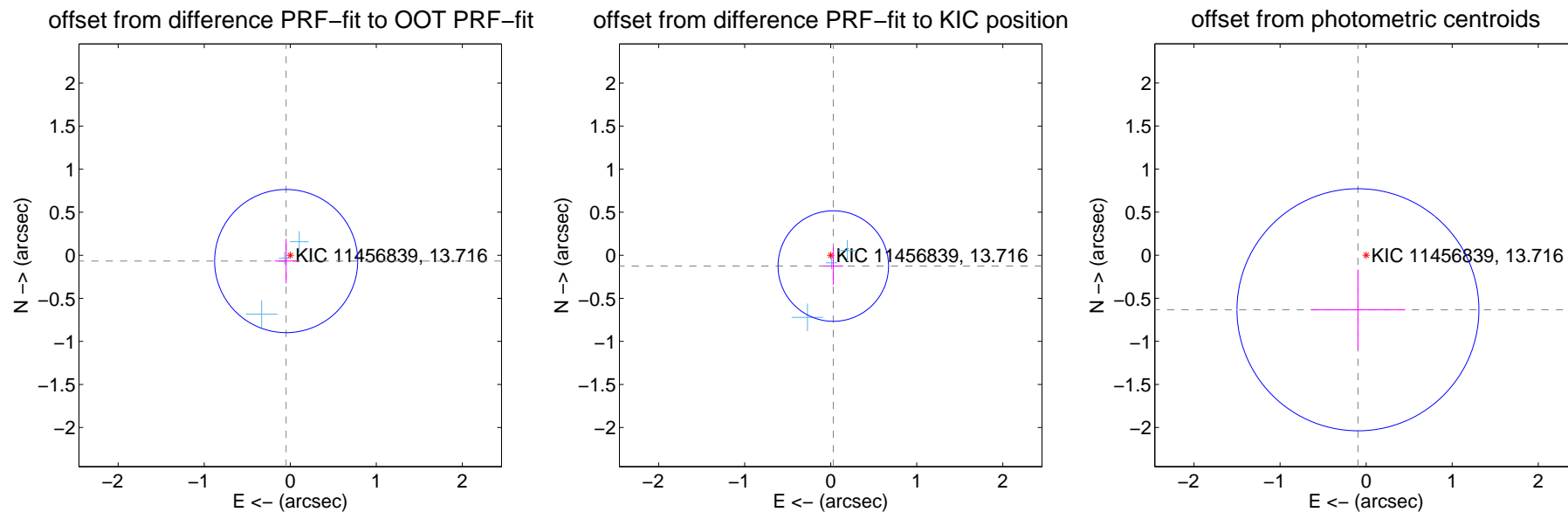
DV Centroid Data

Supplemental centroid analysis for 011456839-01. Kepler magnitude: 13.72. Transit SNR 5.83

There are 3 quarters with good PRF difference image offsets

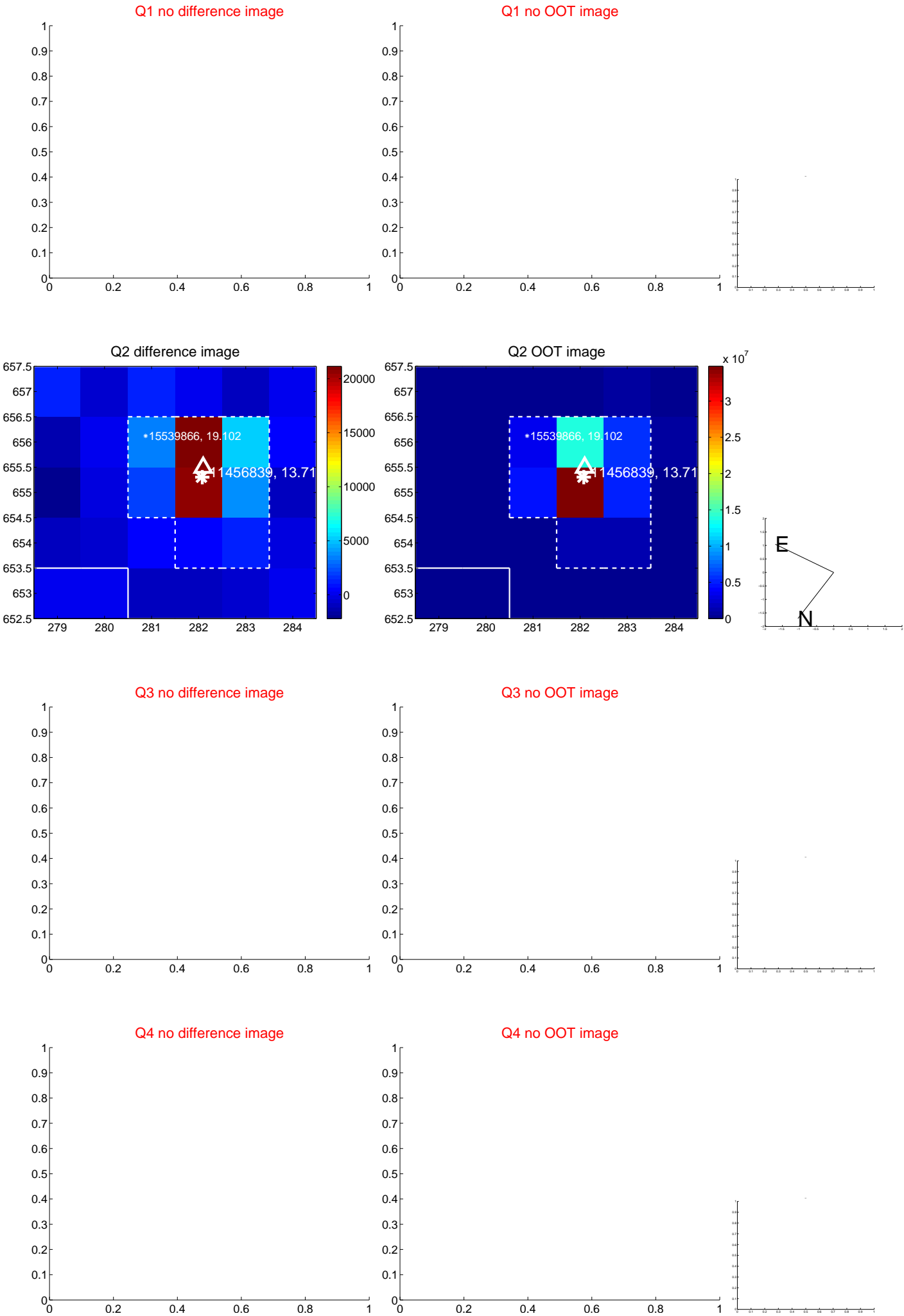
The direct PRF centroid is offset from the target star catalog position by about 0.14 arcsec

| | Distance in arcsec | Distance / σ | Δ RA | Δ Dec |
|---|--------------------|---------------------|--------------------|--------------------|
| PRF-fit source offset from OOT | 0.082 ± 0.277 | 0.30 | 0.048 ± 0.132 | -0.067 ± 0.258 |
| PRF-fit source offset from KIC position | 0.129 ± 0.214 | 0.60 | -0.030 ± 0.115 | -0.125 ± 0.218 |
| photometric centroid source offset | 0.64 ± 0.47 | 1.37 | 0.09 ± 0.55 | -0.63 ± 0.47 |



Centroid source offsets from the target star reconstructed from PRF and photometric centroids. Sky blue crosses: good quarterly centroid offsets; Vermillion crosses: bad quarterly centroid offsets; magenta cross: average over quarters. Length of the crosses: one- σ uncertainty. Blue circle: three- σ . Red *: target star. Blue *: Other stars. Text next to a star gives its KIC ID and kepmag. KIC IDs > 15,000,000 are from the UKIRT catalog.

white \times : KIC target position; $+$: OOT centroid; \triangle : difference centroid. red \times : large negative pixel value.



white \times : KIC target position; $+$: OOT centroid; \triangle : difference centroid. red \times : large negative pixel value.

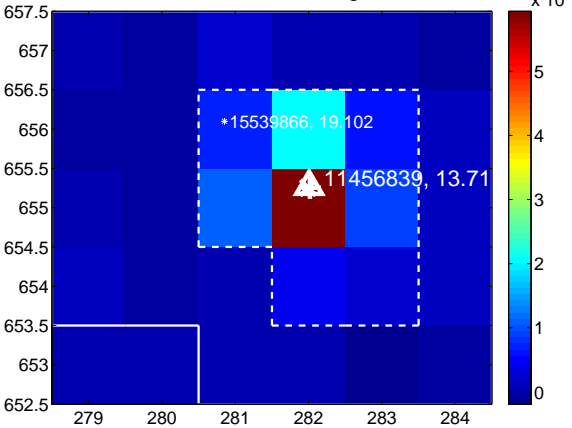
Q5 no difference image



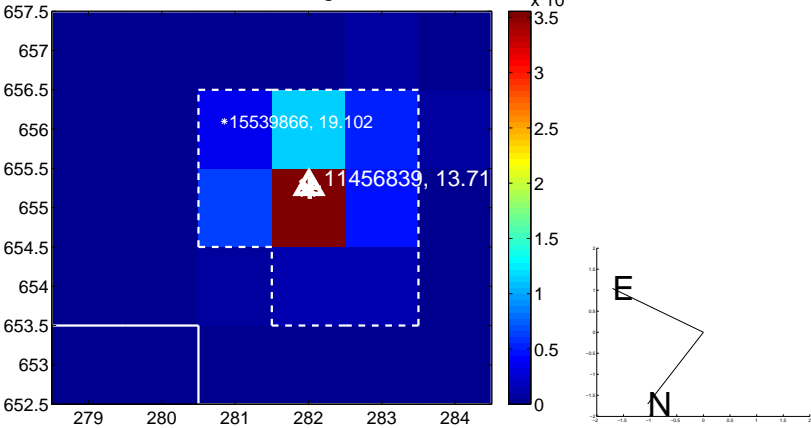
Q5 no OOT image



Q6 difference image



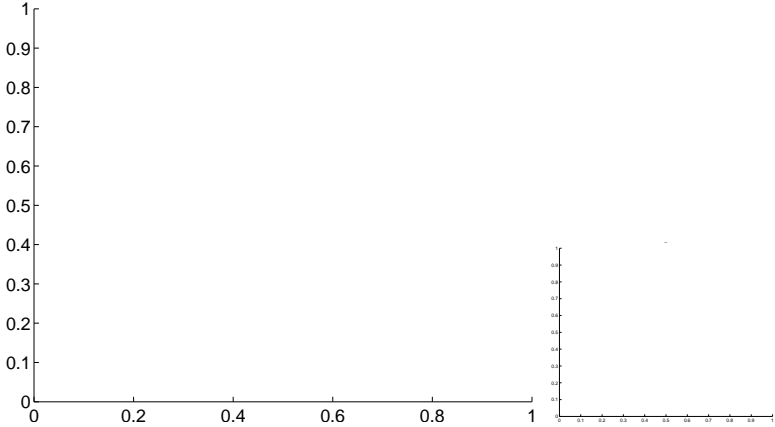
Q6 OOT image



Q7 no difference image



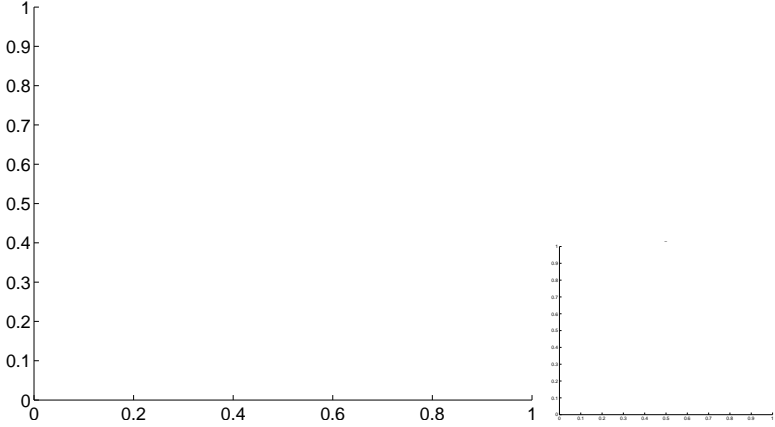
Q7 no OOT image



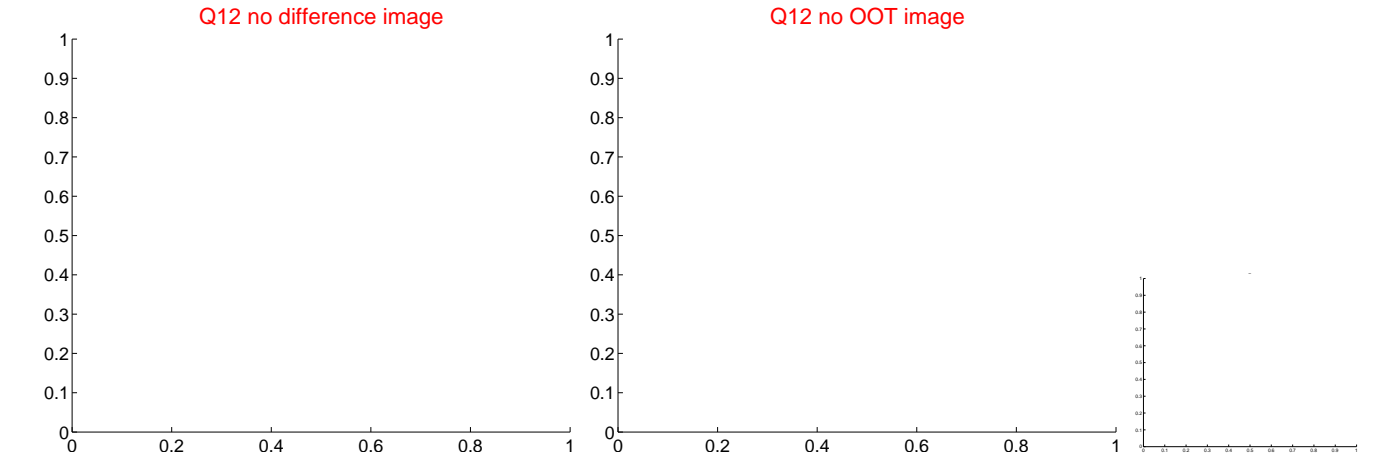
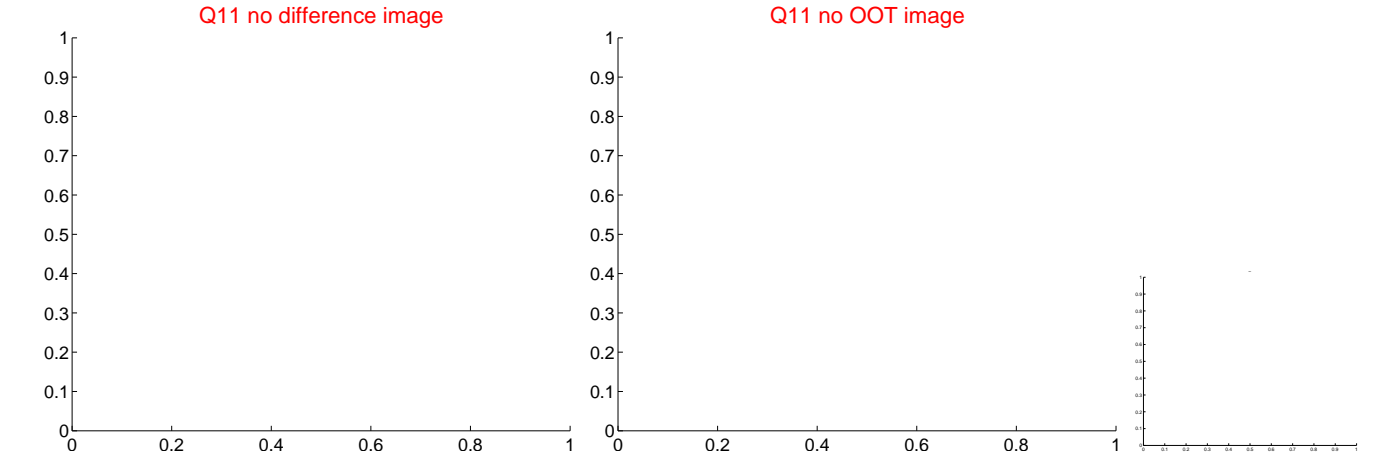
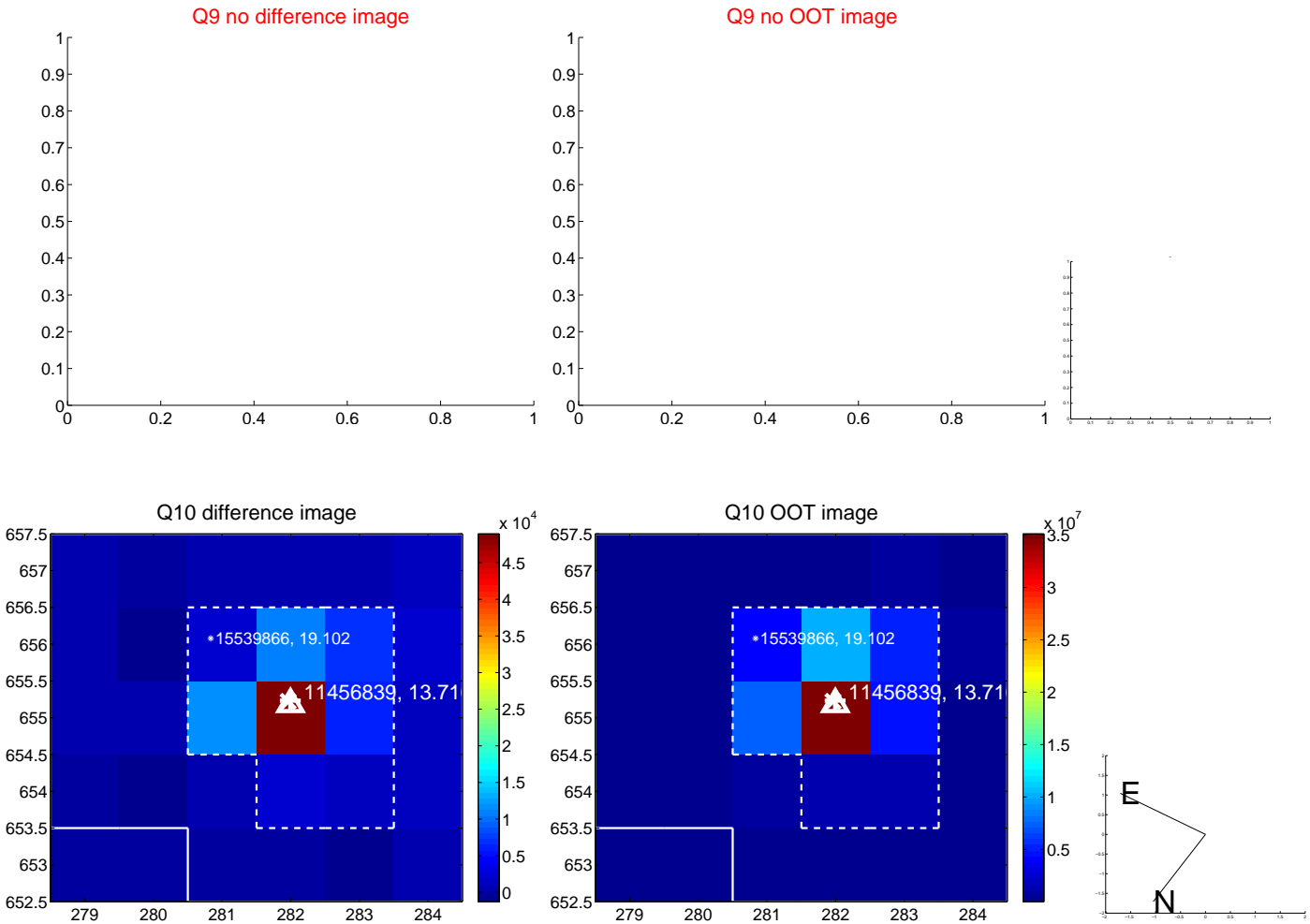
Q8 no difference image



Q8 no OOT image



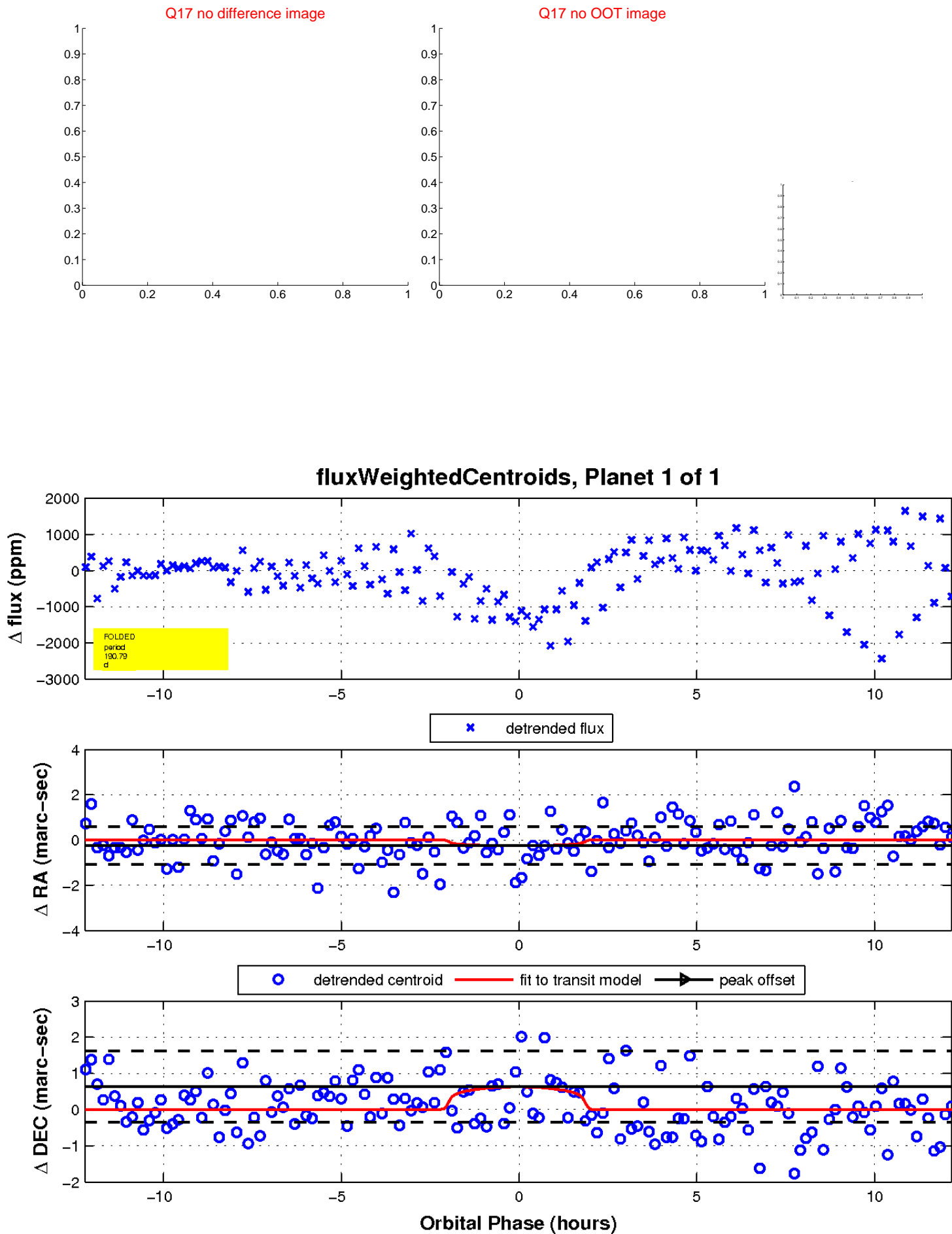
white ×: KIC target position; +: OOT centroid; △: difference centroid. red ✕: large negative pixel value.



white \times : KIC target position; $+$: OOT centroid; \triangle : difference centroid. red \times : large negative pixel value.



white \times : KIC target position; $+$: OOT centroid; \triangle : difference centroid. red \times : large negative pixel value.



UKIRT Image

Declination

