

KIC 011455028

Q1-17 DR25 TCE Parameters

TCE	Run Type	KOI?	Period (Days)	Epoch (BKJD)	Depth (ppm)	Duration (Hours)	MES	SNR	R_{\star} (R_{\odot})	T_{\star} (K)	R_p (R_{\oplus})	S_p (S_{\oplus})
011455028-01	OBS	No	0.573864	131.733549	85.6	2.725	10.7	6.4	0.98	5945	1.08	5940.60

Robovetter Results

TCE	Run Type	Disp	Score	N	S	C	E	Comments
011455028-01	OBS	FP	0.00	1	0	0	0	INDIV_TRANS_RUBBLE_SKYE_ZUMA_TRACKER—SWEET_NTL—LPP_DV—LPP_ALT—MOD_NONUNIQ_ALT

Notes: OBS = Observed. INJ = Injected. INV = Inverted. SCR = Scrambled.

N = Not Transit-Like. S = Stellar Eclipse. C = Centroid Offset. E = Ephemeris Match.

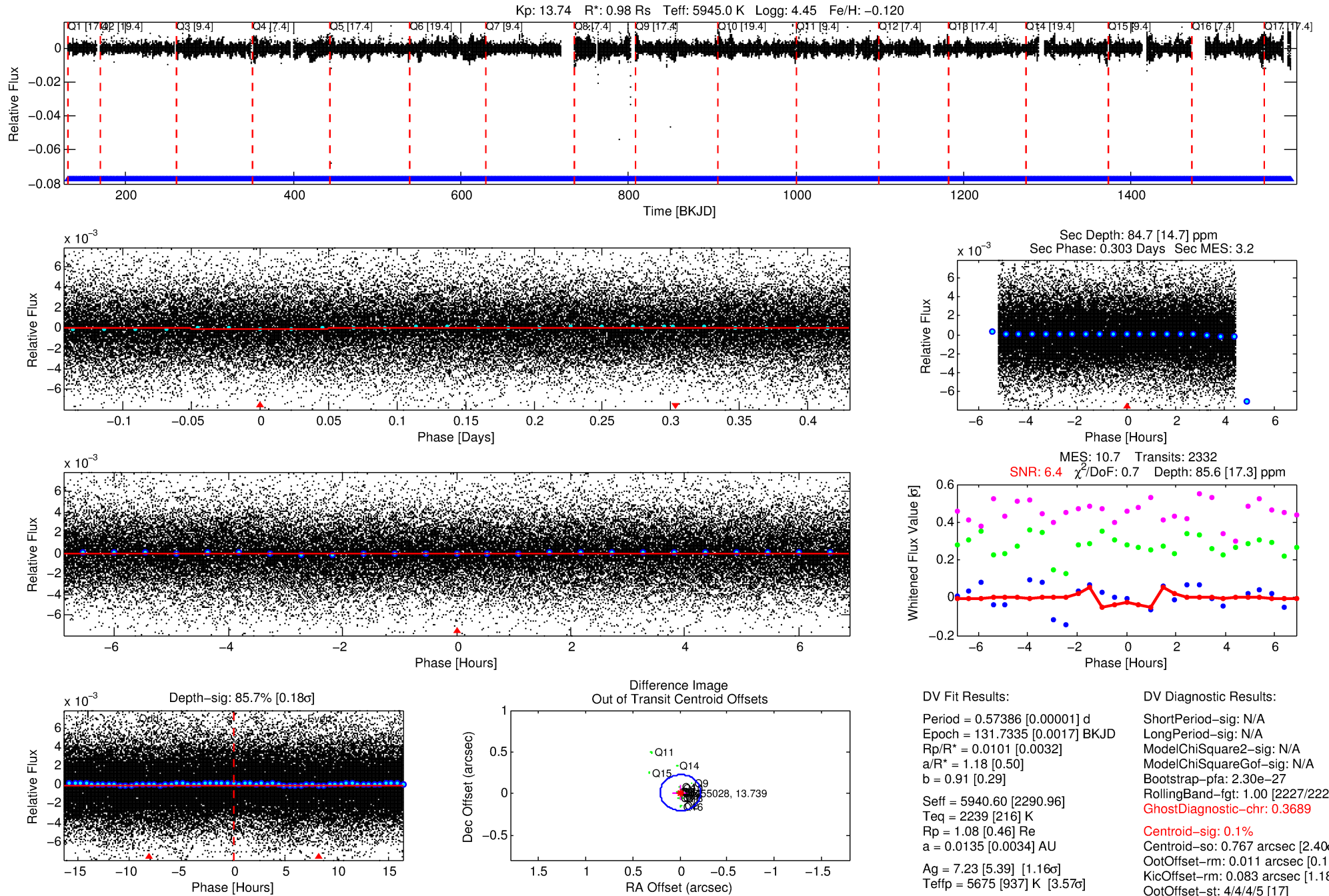
See http://exoplanetarchive.ipac.caltech.edu/docs/API_kepcandidate_columns.html#proj_disp_col for comment definitions.

Ephemeris Match Information For 011455028-01

No Significant Match Found

DV One-Page Summary

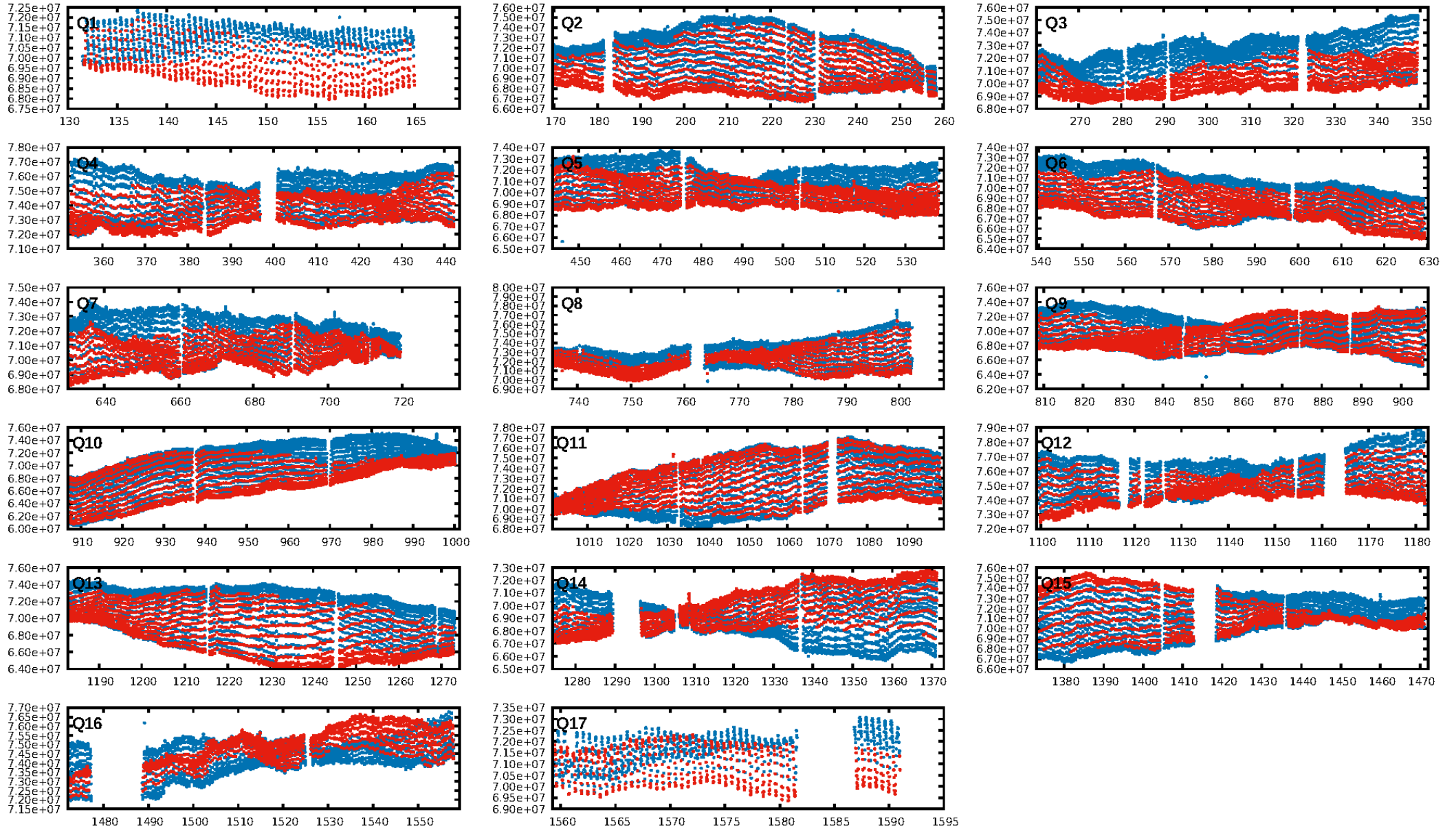
KIC: 11455028 Candidate: 1 of 1 Period: 0.574 d



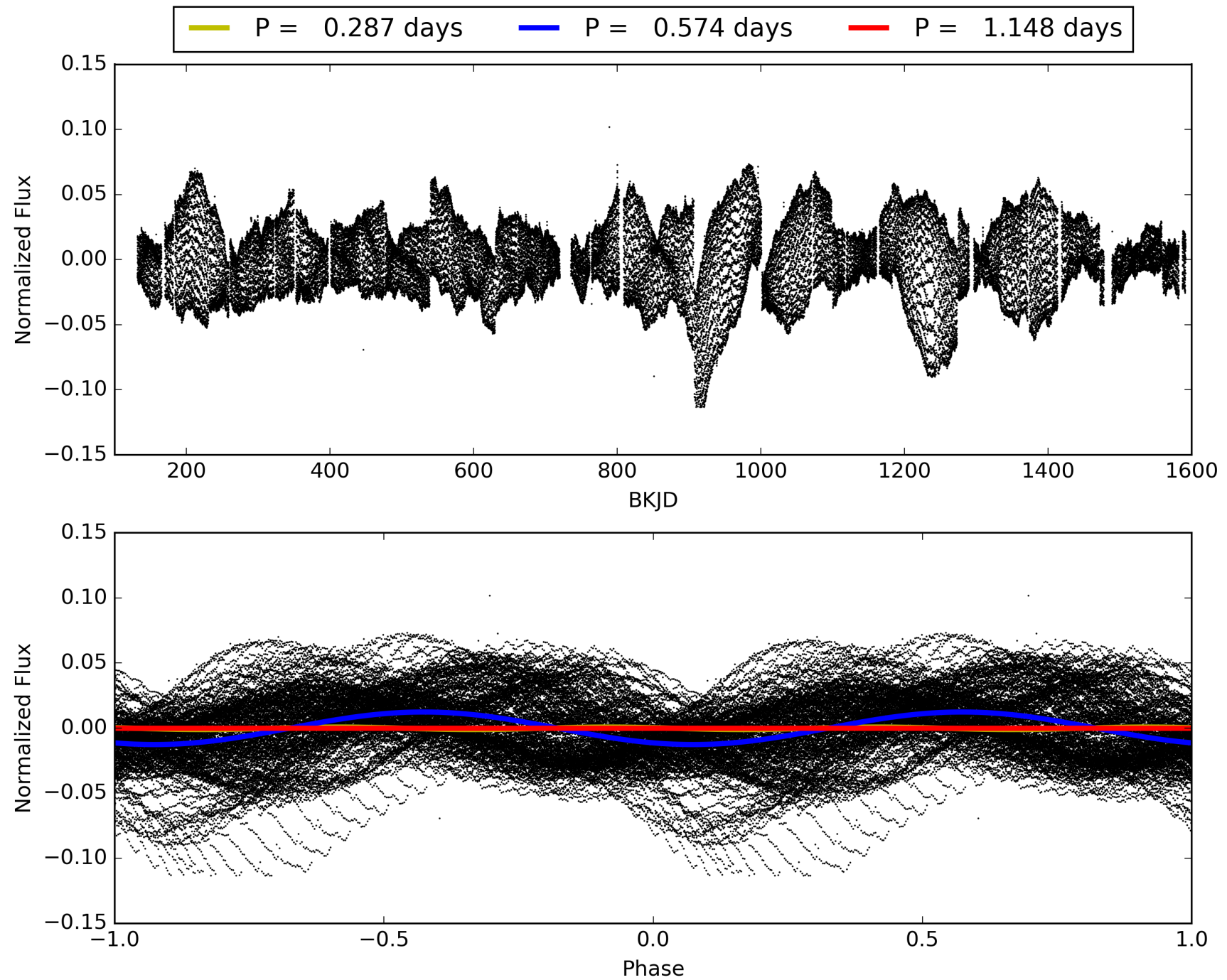
Software Revision: svn+ssh://murzim/repo/soc/tags/release/9.3.42@60958 -- Date Generated: 29-Jan-2016 16:23:46 Z

This Data Validation Report Summary was produced in the Kepler Science Operations Center Pipeline at NASA Ames Research Center

TCE 011455028-01, PDC Light Curves

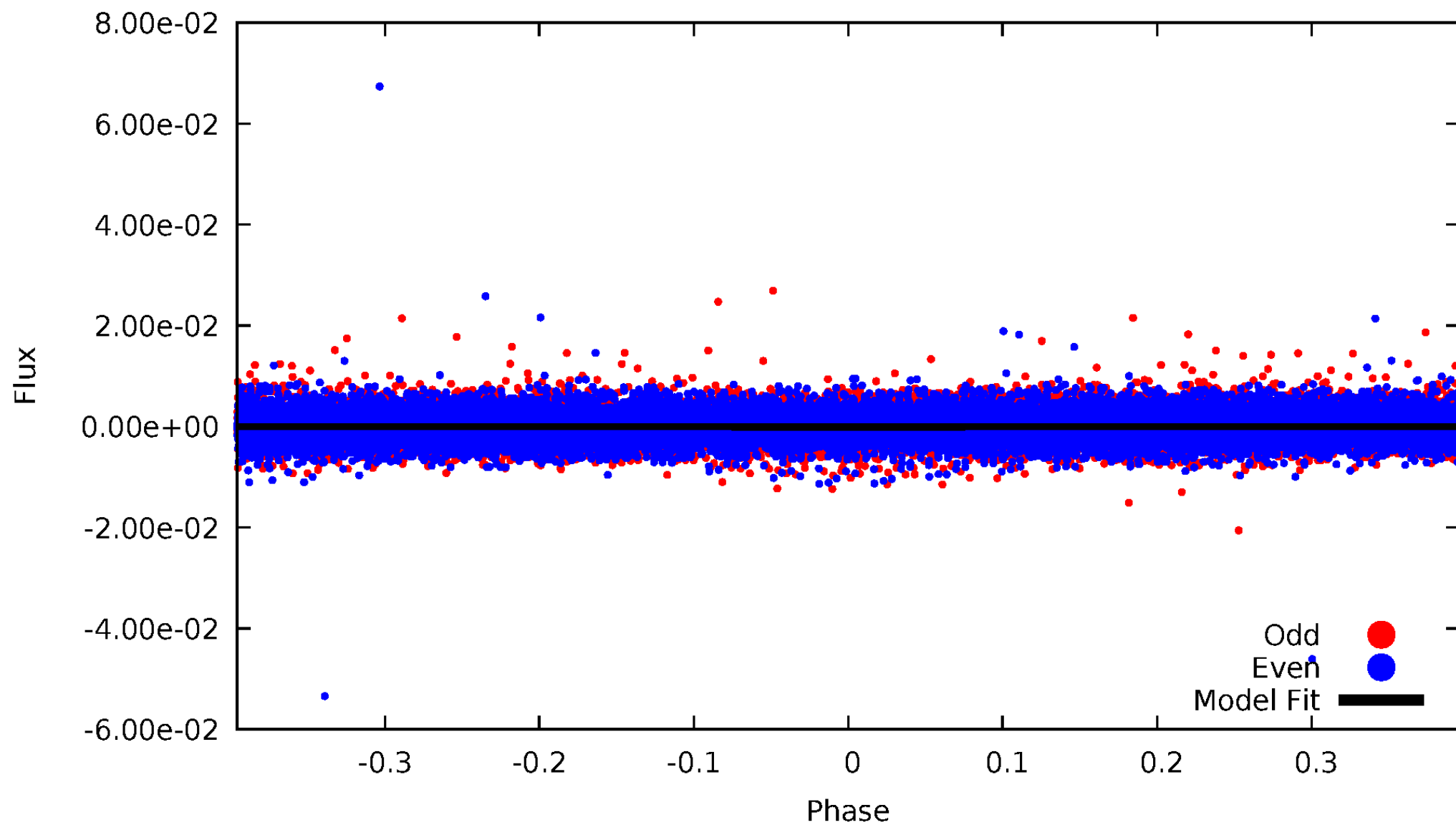


TCE 011455028-01



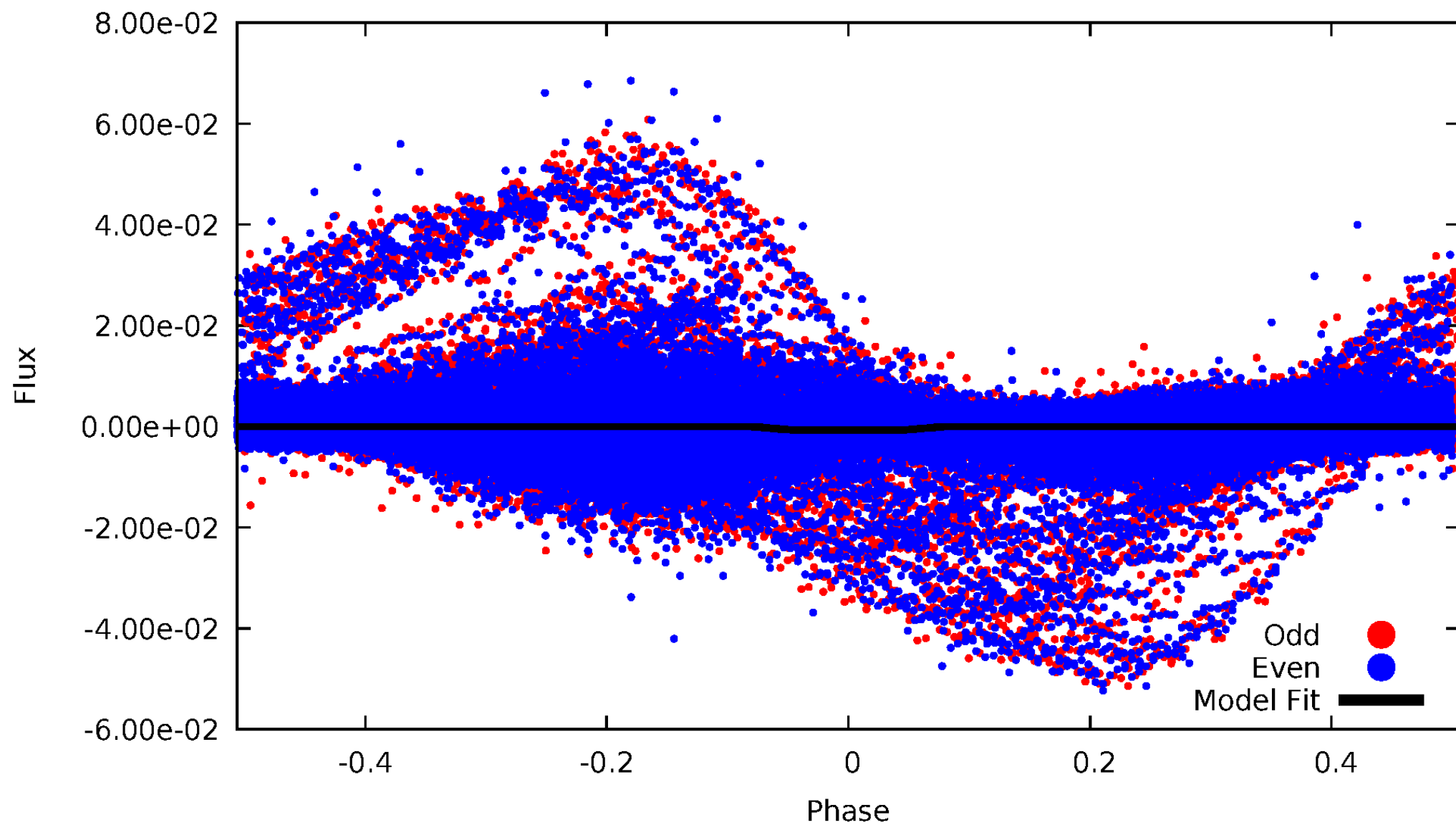
DV Odd/Even

TCE 011455028-01

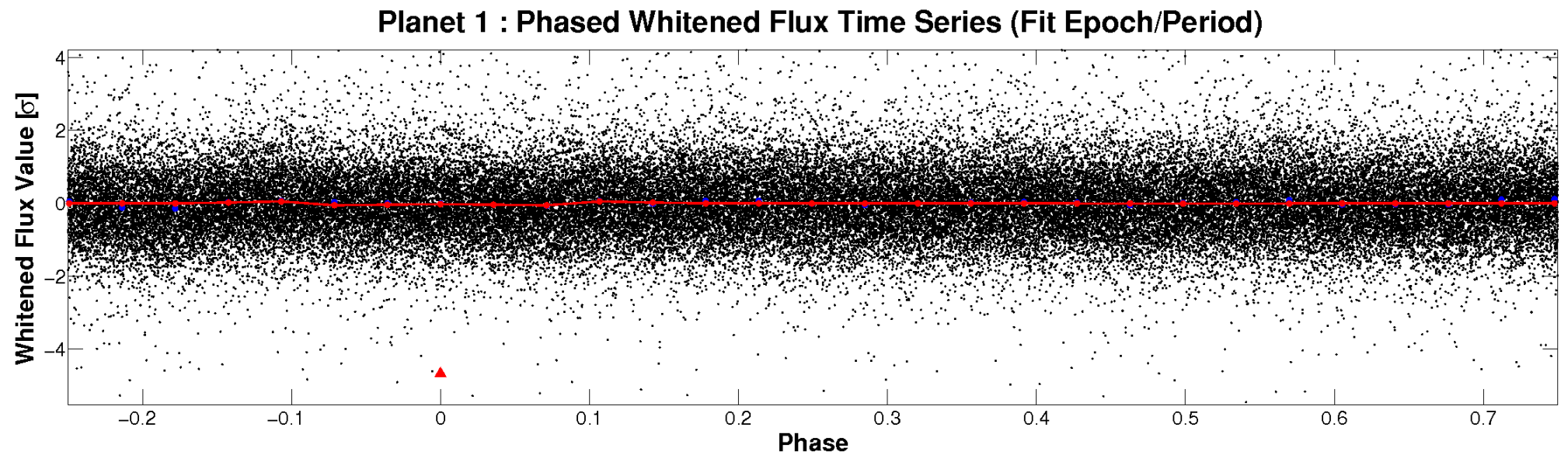
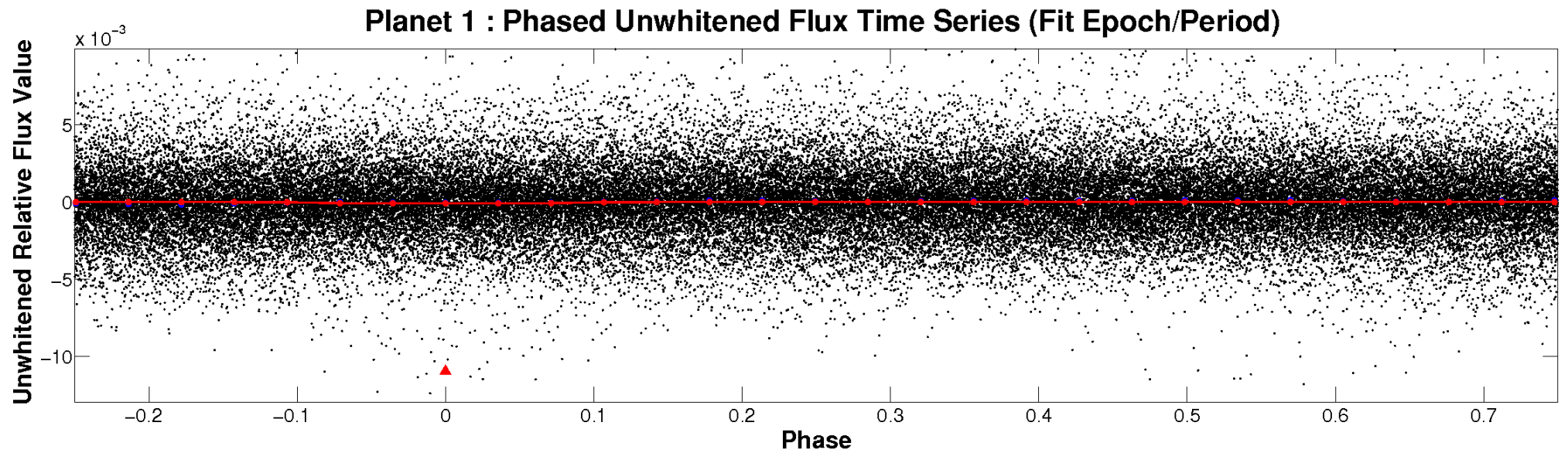


ALT Odd/Even

TCE 011455028-01

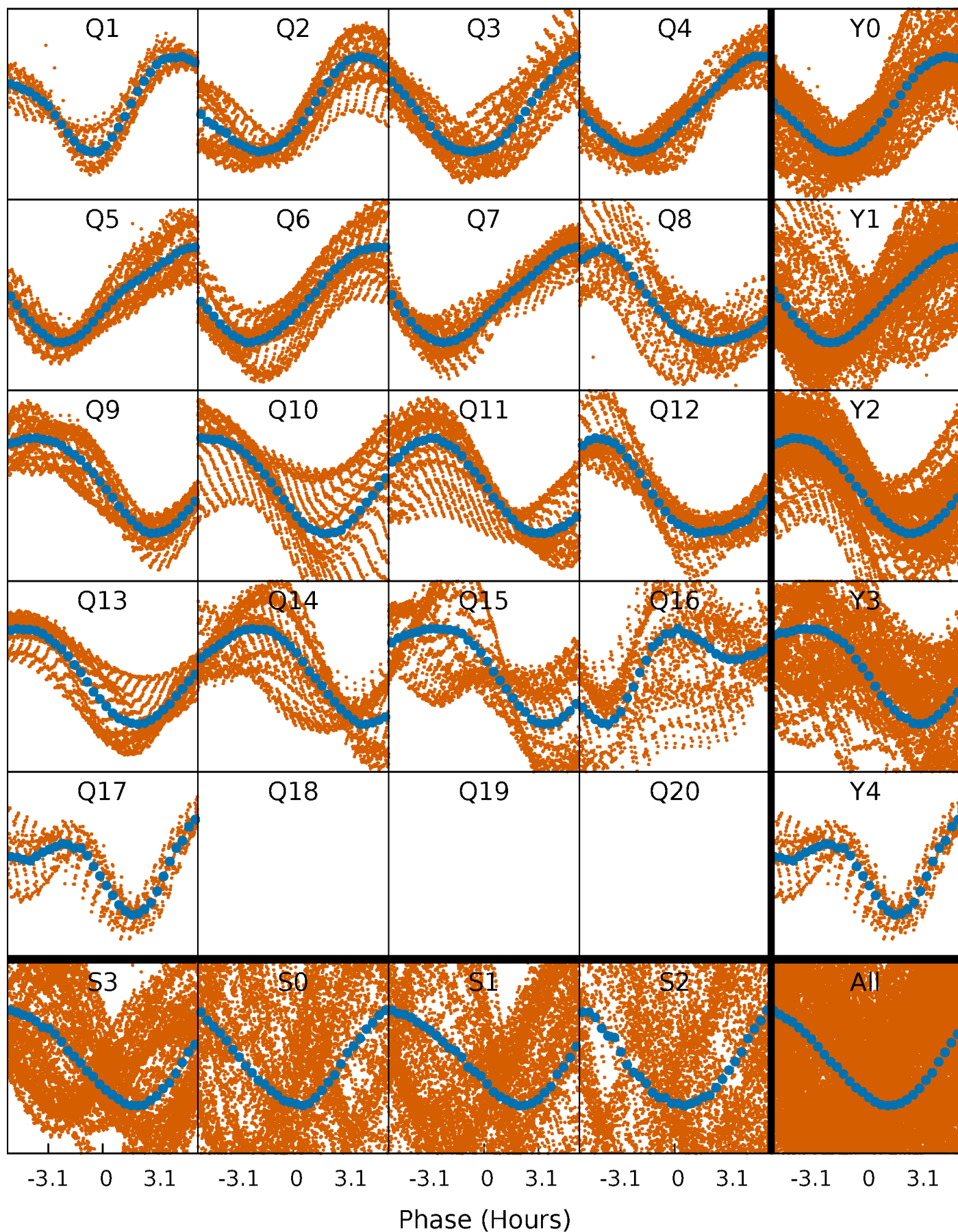


Non-Whitened Vs. Whitened Light Curve



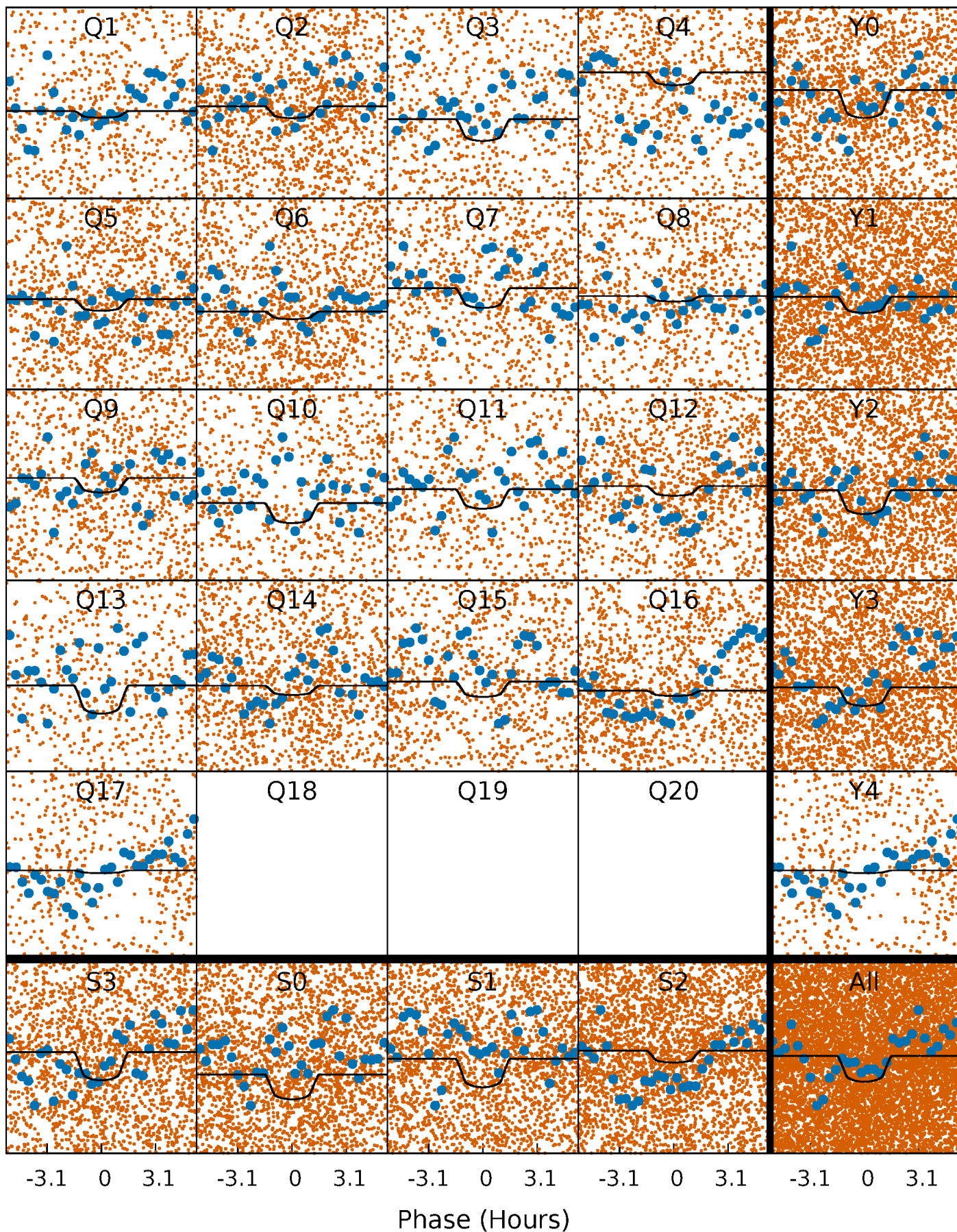
PDC Quarter-Phased Transit Curves

TCE 011455028-01 P= 0.573864 Days $T_0=131.733549$ (BKJD)



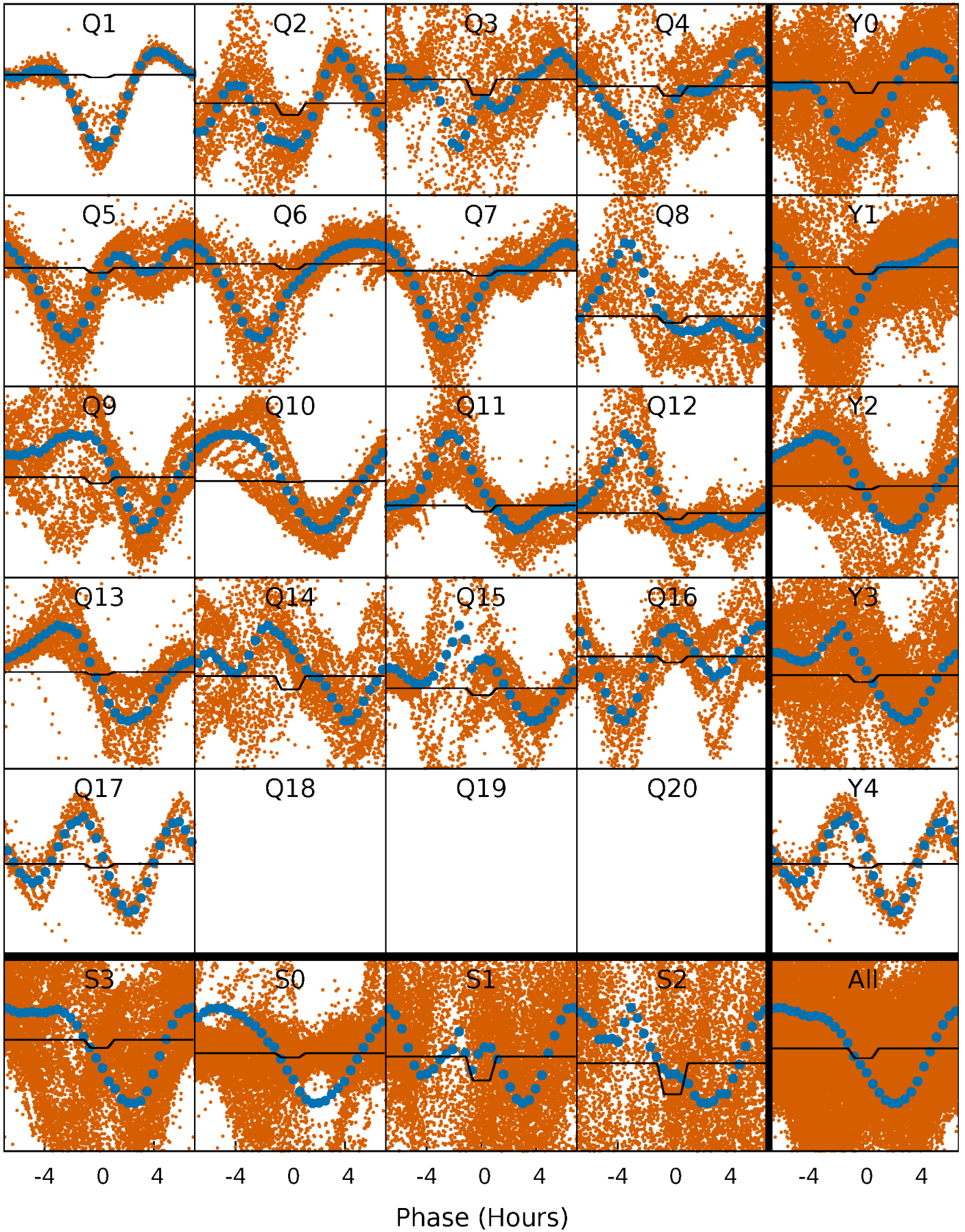
DV Quarter-Phased Transit Curves

TCE 011455028-01 P= 0.573864 Days $T_0=131.733549$ (BKJD)



Alt. Detrend Quarter-Phased Transit Curves

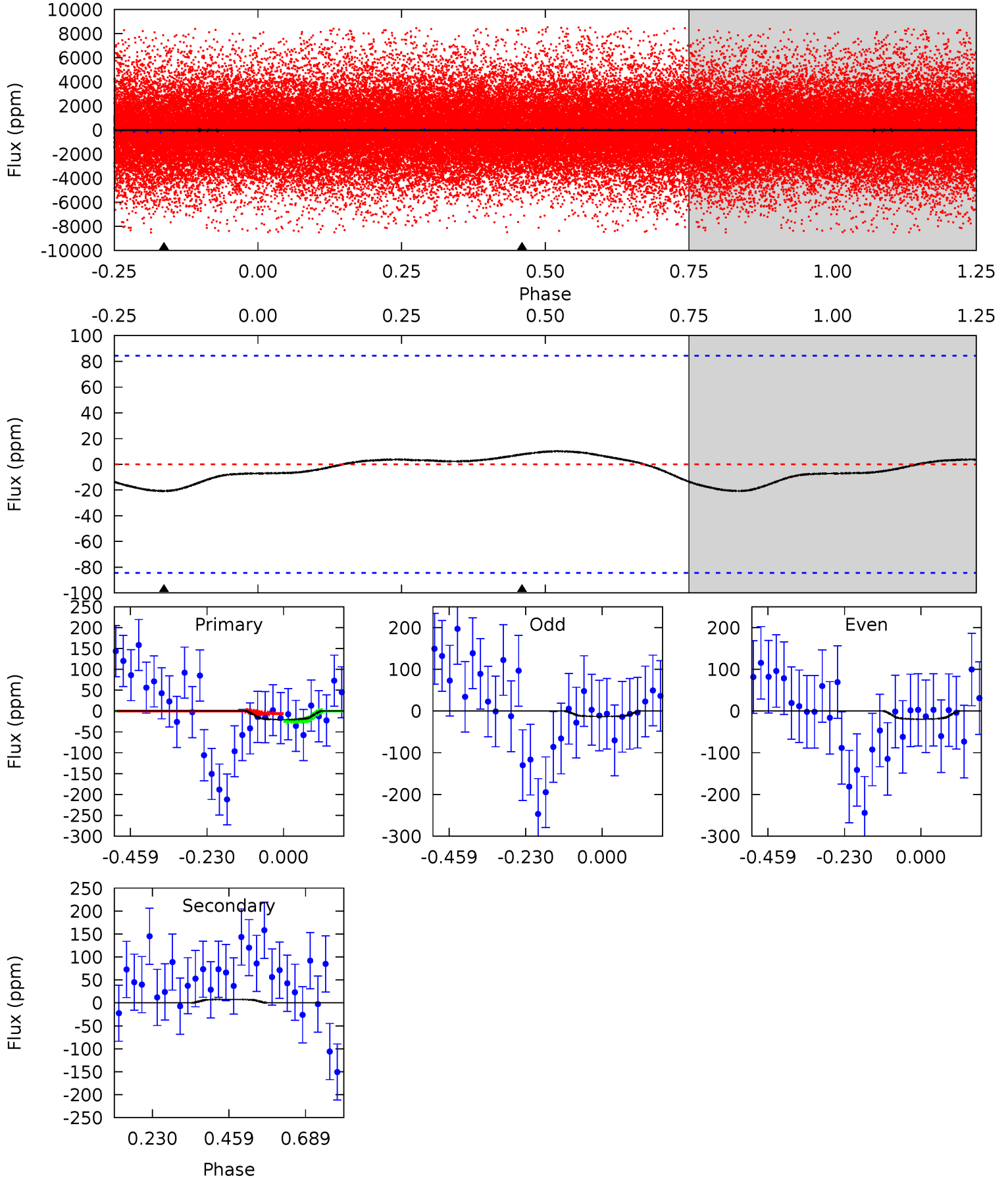
TCE 011455028-01 P= 0.573870 Days $T_0=131.711882$ (BKJD)



DV Model-Shift Uniqueness Test

011455028-01, P = 0.573864 Days, E = 131.159685 Days

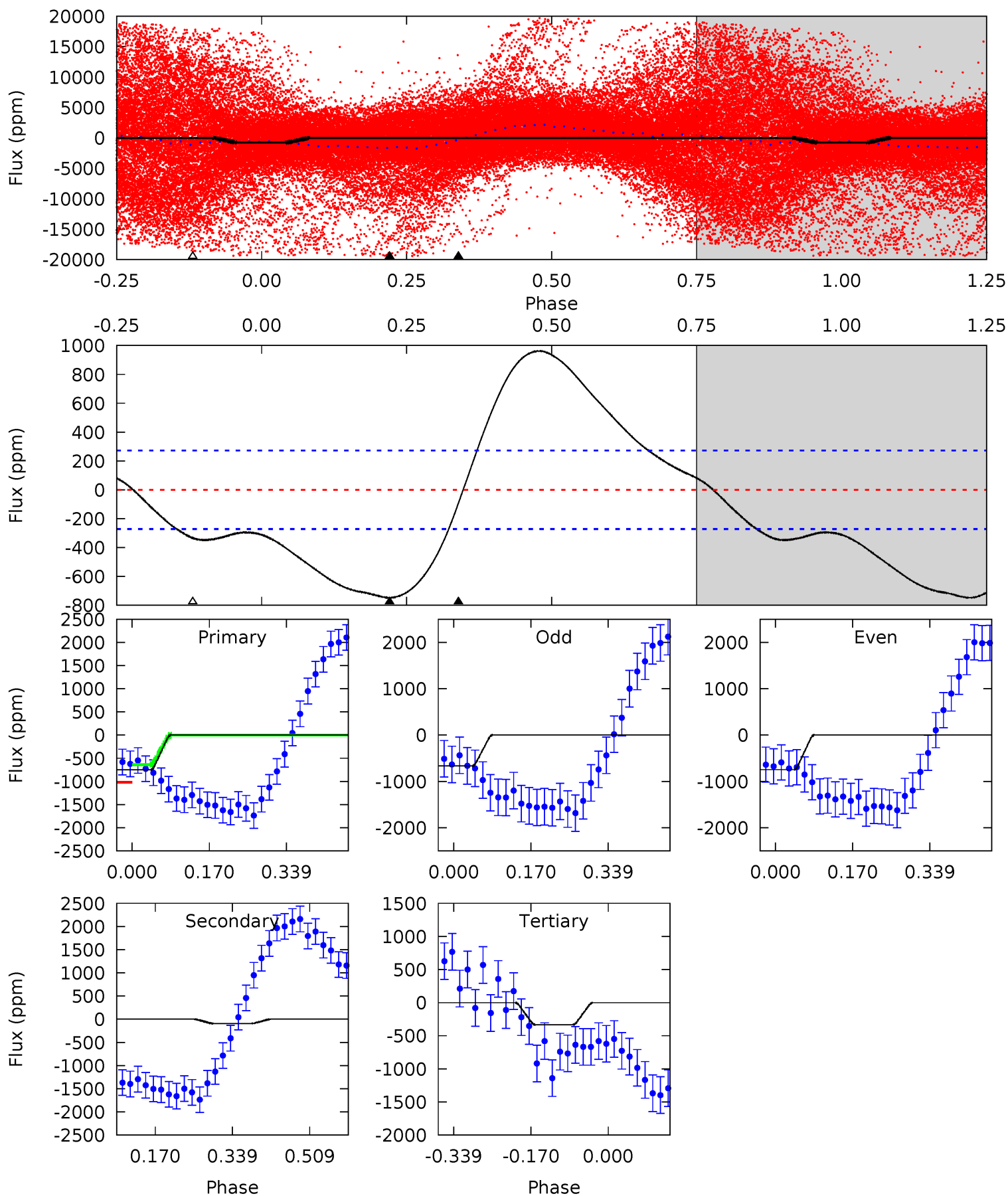
Pri	Sec	Ter	Pos	FA ₁	FA ₂	F _{Red}	Pri-Ter	Pri-Pos	Sec-Ter	Sec-Pos	Odd-Evn	DMM	Shape	TAT
1.08	-0.40	0	0	4.39	1.20	0.18	1.08	1.08	-0.40	-0.40	0.17	1.56	0.33	0.48



Alt Model-Shift Uniqueness Test

011455028-01, P = 0.573870 Days, E = 131.138012 Days

Pri	Sec	Ter	Pos	FA ₁	FA ₂	F _{Red}	Pri-Ter	Pri-Pos	Sec-Ter	Sec-Pos	Odd-Evn	DMM	Shape	TAT
12.2	1.53	5.47	0	4.45	1.37	6.48	6.76	12.2	-3.94	1.53	0.66	1.75	0.56	3.12



Stellar Parameters For KIC 011455028

	$T_{\text{eff}}(K)$	$\log(g)$	[Fe/H]	$R (R_{\odot})$	$M(M_{\odot})$	$p_{\star} (\text{g}\cdot\text{cm}^{-3})$
	5945^{+160}_{-178}	$4.450^{+0.081}_{-0.202}$	$-0.120^{+0.300}_{-0.300}$	$0.982^{+0.288}_{-0.123}$	$0.991^{+0.132}_{-0.119}$	$1.475^{+0.537}_{-0.759}$
	+3%/-3%	+2%/-5%	+250%/-250%	+29%/-13%	+13%/-12%	+36%/-51%
Source	PHO1	KIC0	KIC0	DSEP		

KIC = Kepler Input Catalog; PHO = Photometry; SPE = Spectroscopy; AST = Asteroseismology
 TRA = Transits; DESP = Dartmouth Models; MULT = Multiple Models

Secondary Eclipse Parameters for KIC 011455028-01 / KOI

Detrend	Depth (ppm)	$R_p (R_{\oplus})$	$T_{max} (K)$	$T_{obs} (K)$	A_{obs}
DV	8 ± 19	$1.11^{+0.40}_{-0.37}$	3182^{+237}_{-166}	-3865^{+7465}_{-876}	$-0.610^{+1.544}_{-1.853}$
Alt.	-94 ± 61	$2.97^{+0.56}_{-0.42}$	3175^{+240}_{-164}	3691^{+507}_{-1557}	$1.044^{+0.838}_{-0.733}$

T_{max} = Theoretical Maximum Planetary Temperature

T_{obs} = Observed Planetary Temperature (Assuming $A=0.3$)

A_{obs} = Observed Albedo (Assuming $T=0$)

If a secondary eclipse is present, the system is likely an EB if $T_{obs} \gg T_{max}$ AND $A_{obs} \gg 1.0$

DV Centroid Data

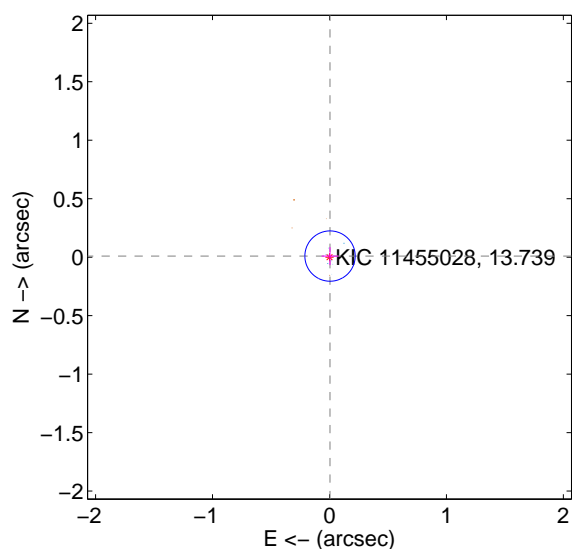
Supplemental centroid analysis for 011455028-01. Kepler magnitude: 13.74. Transit SNR 6.37

There are 13 quarters with good PRF difference image offsets

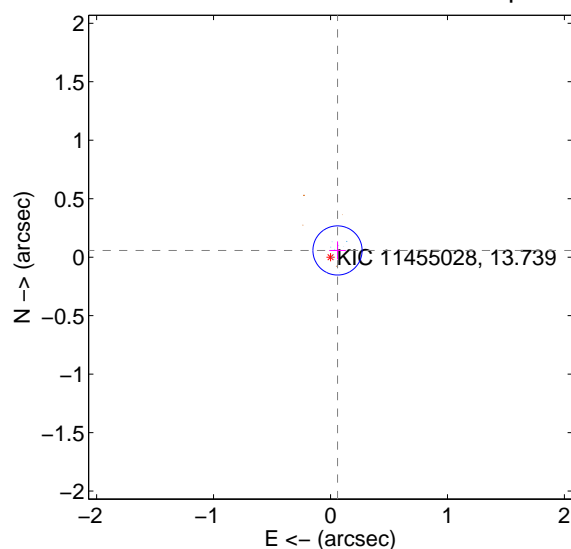
The direct PRF centroid is offset from the target star catalog position by about 0.06 arcsec

	Distance in arcsec	Distance / σ	Δ RA	Δ Dec
PRF-fit source offset from OOT	0.011 ± 0.072	0.15	-0.005 ± 0.072	0.009 ± 0.076
PRF-fit source offset from KIC position	0.083 ± 0.070	1.18	-0.060 ± 0.071	0.058 ± 0.077
photometric centroid source offset	0.77 ± 0.32	2.40	0.42 ± 0.37	-0.64 ± 0.30

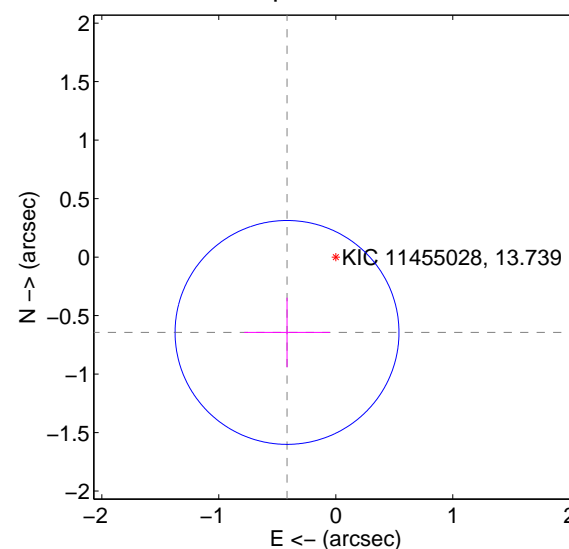
offset from difference PRF-fit to OOT PRF-fit



offset from difference PRF-fit to KIC position

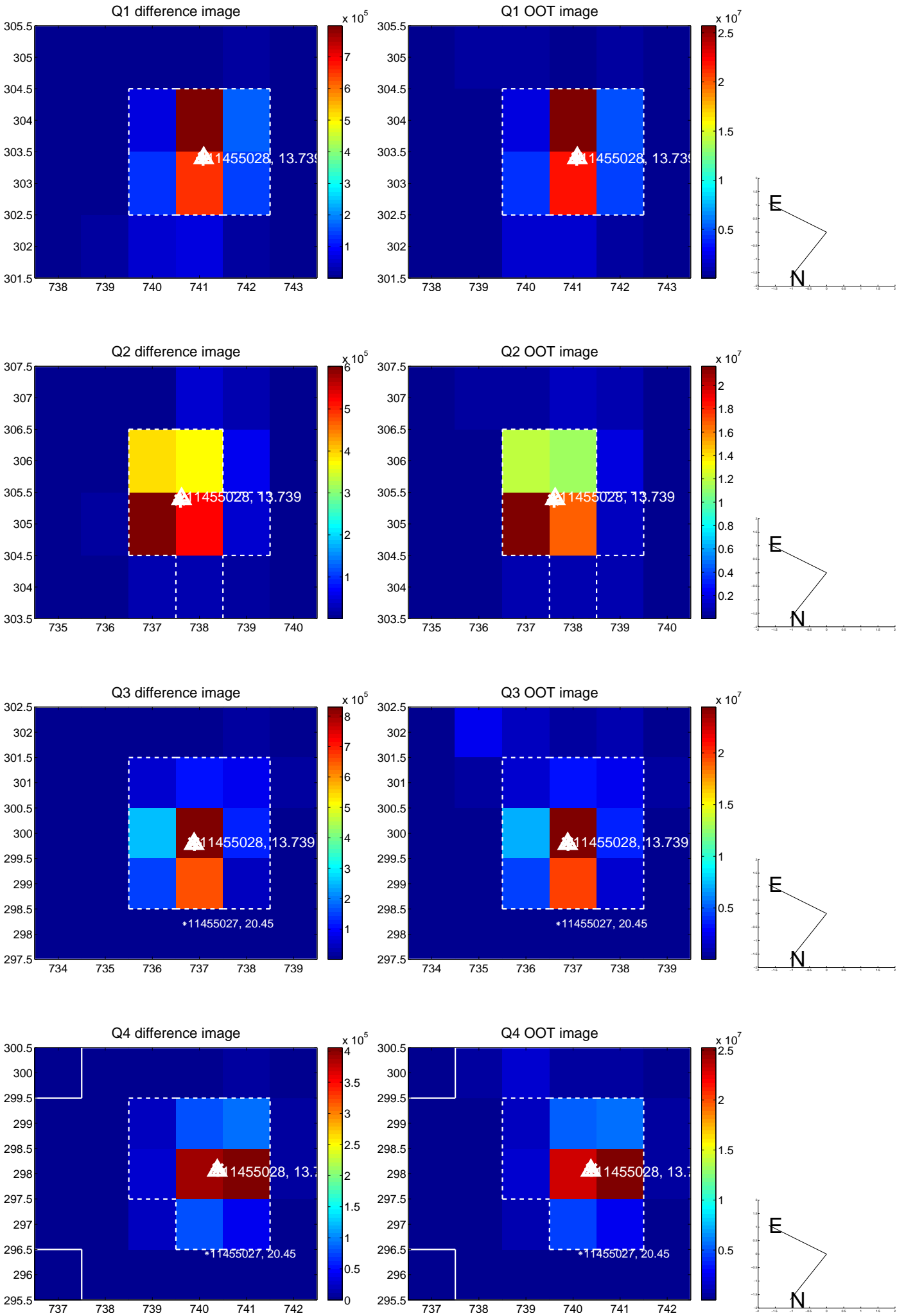


offset from photometric centroids

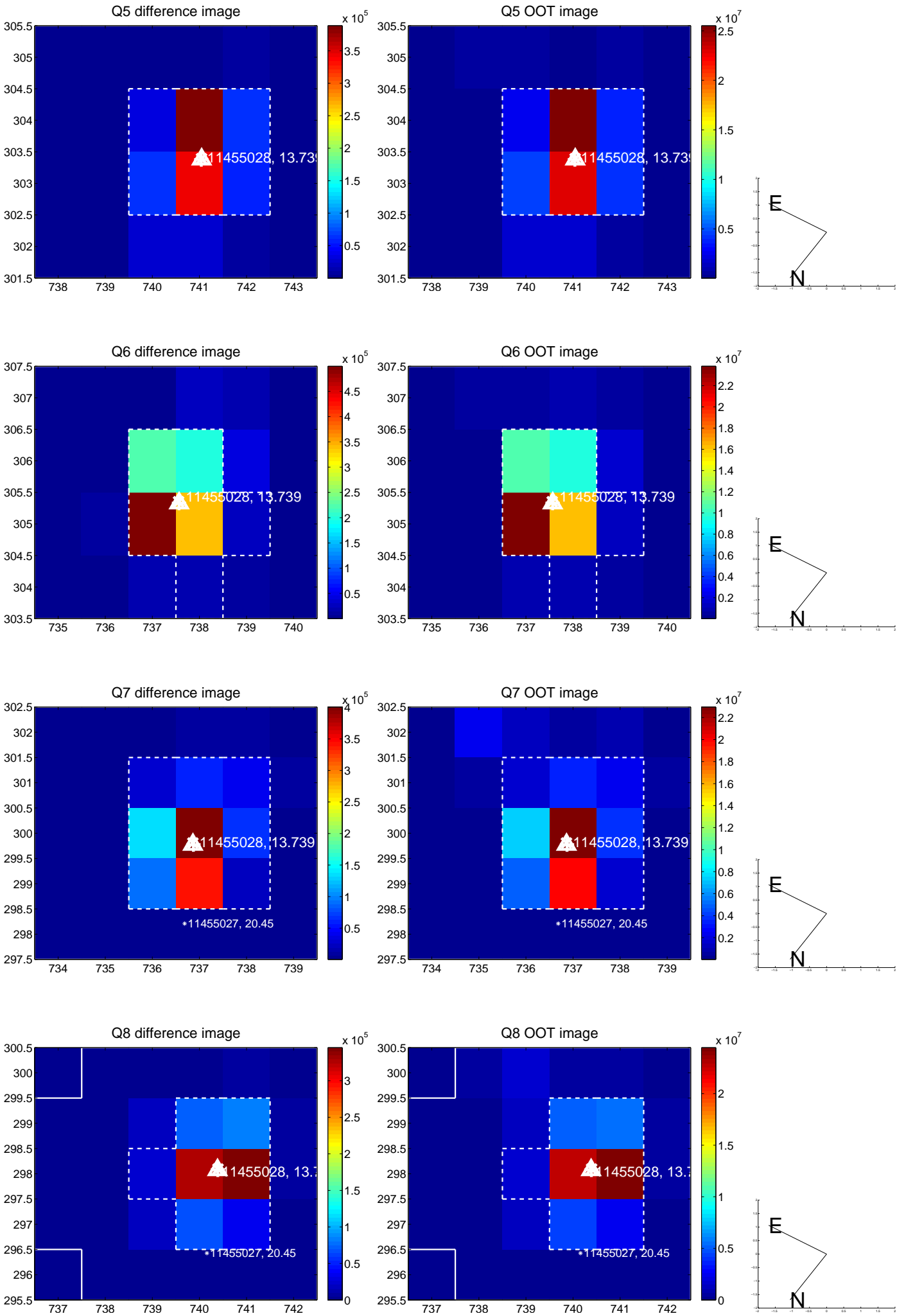


Centroid source offsets from the target star reconstructed from PRF and photometric centroids. Sky blue crosses: good quarterly centroid offsets; Vermillion crosses: bad quarterly centroid offsets; magenta cross: average over quarters. Length of the crosses: one- σ uncertainty. Blue circle: three- σ . Red *: target star. Blue *: Other stars. Text next to a star gives its KIC ID and kepmag. KIC IDs > 15,000,000 are from the UKIRT catalog.

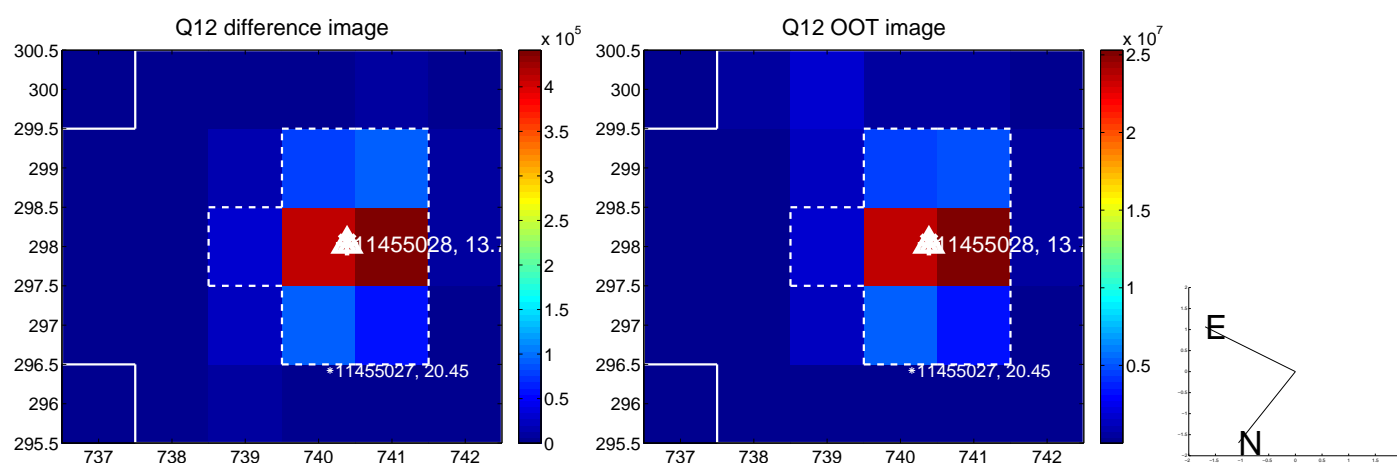
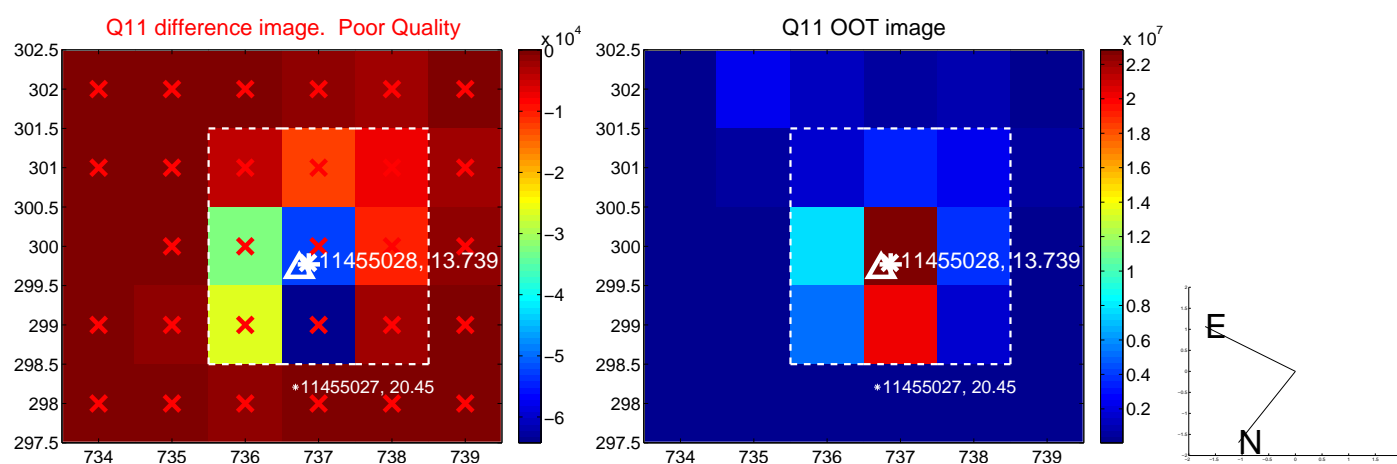
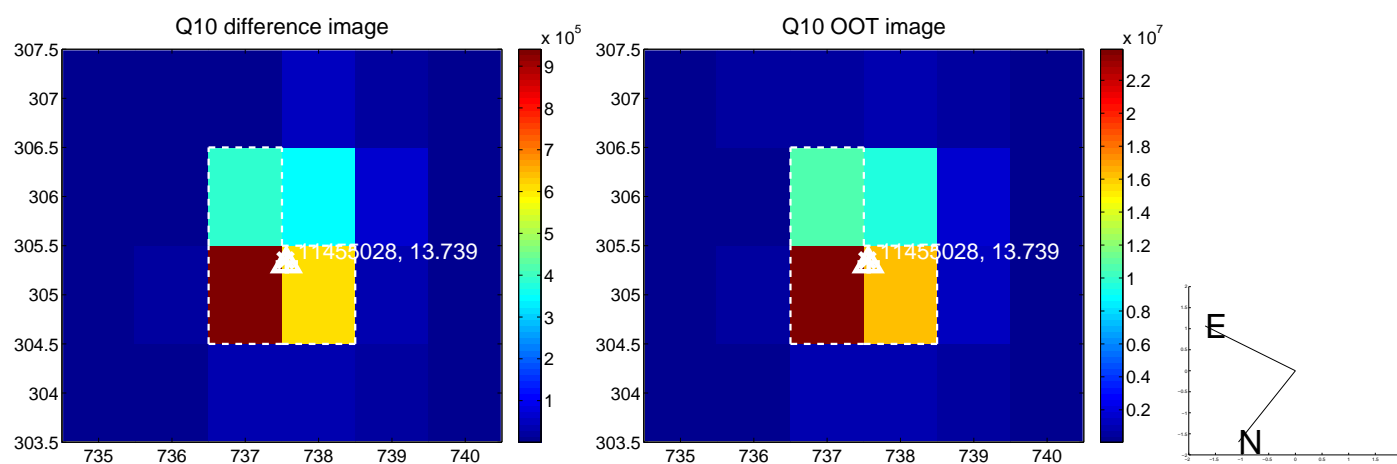
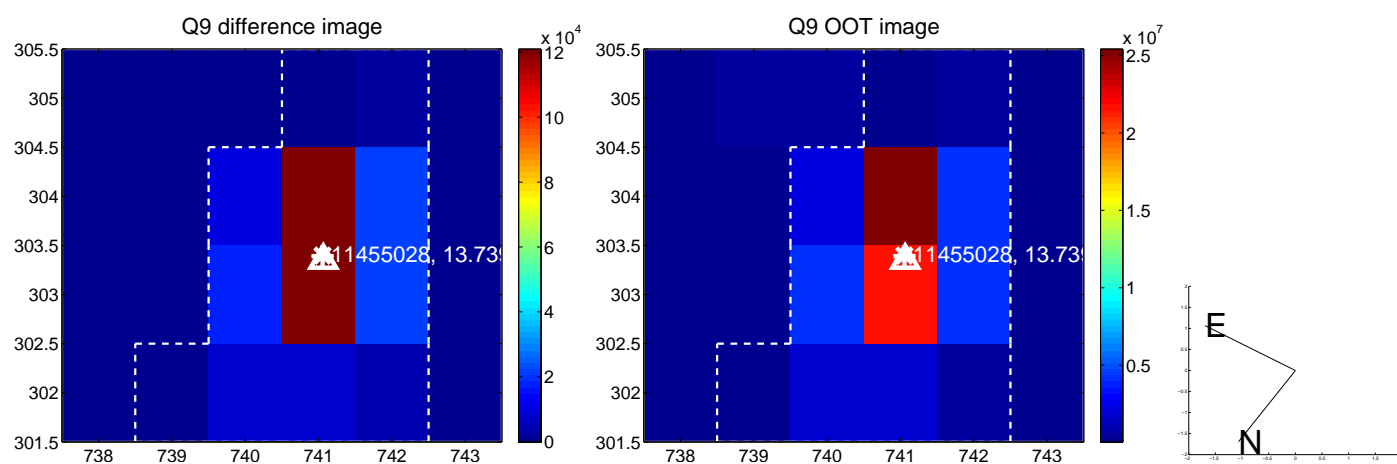
white \times : KIC target position; +: OOT centroid; \triangle : difference centroid. red \times : large negative pixel value.



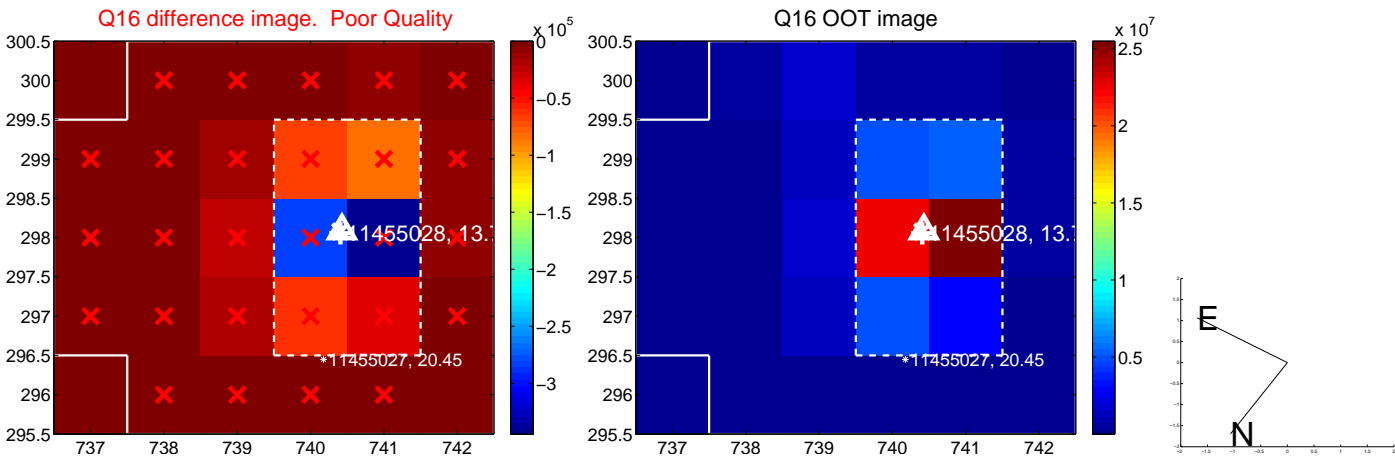
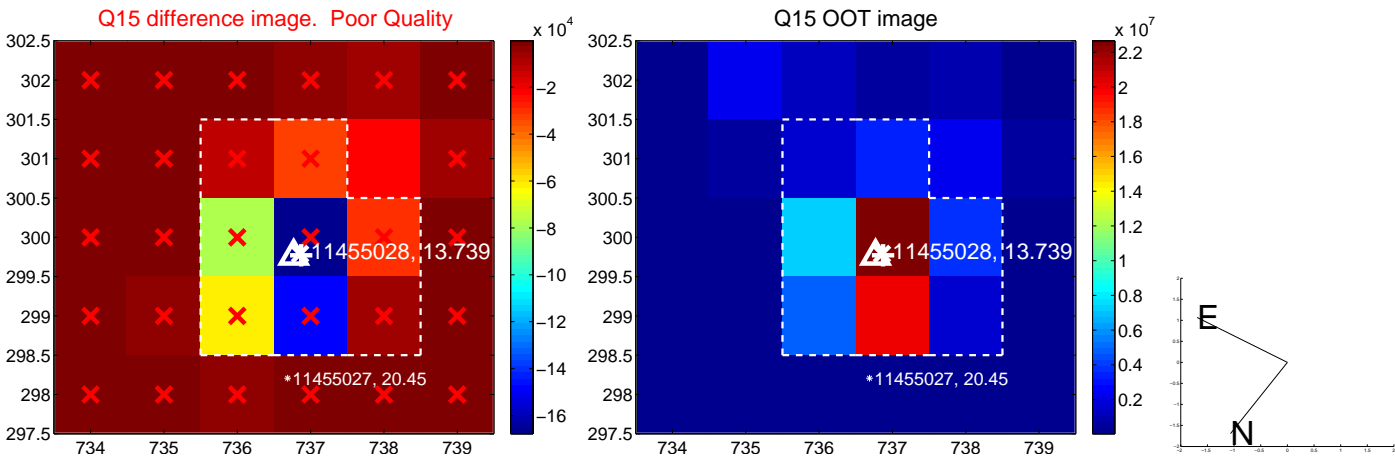
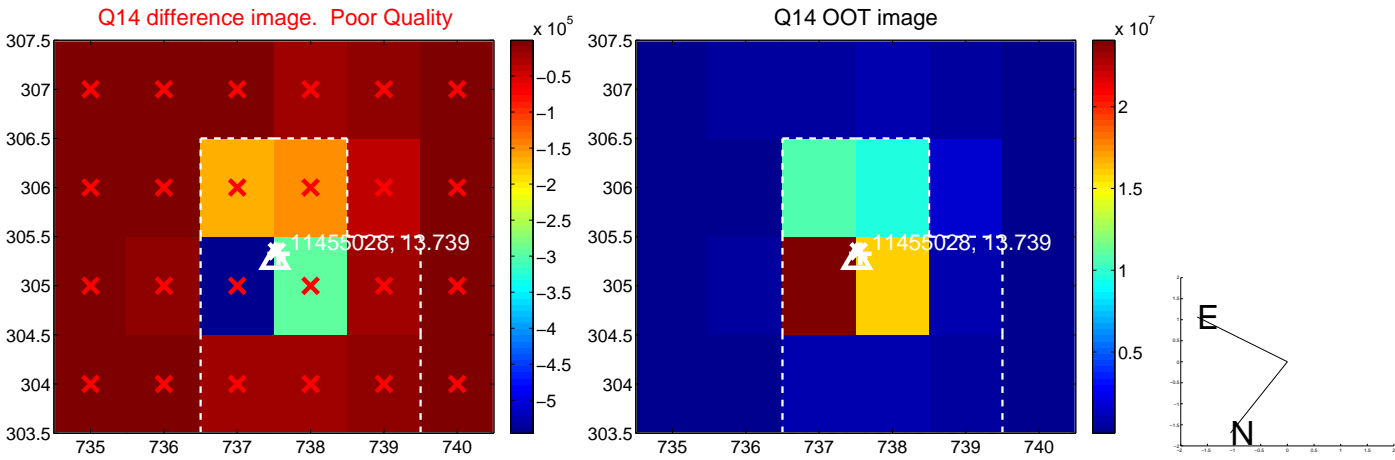
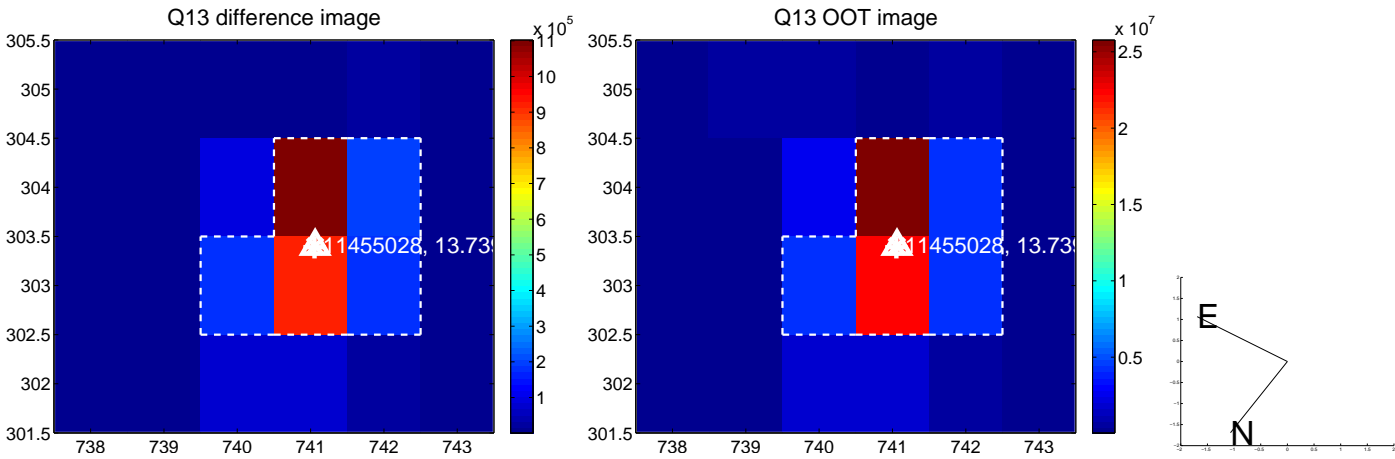
white \times : KIC target position; +: OOT centroid; \triangle : difference centroid. red \times : large negative pixel value.



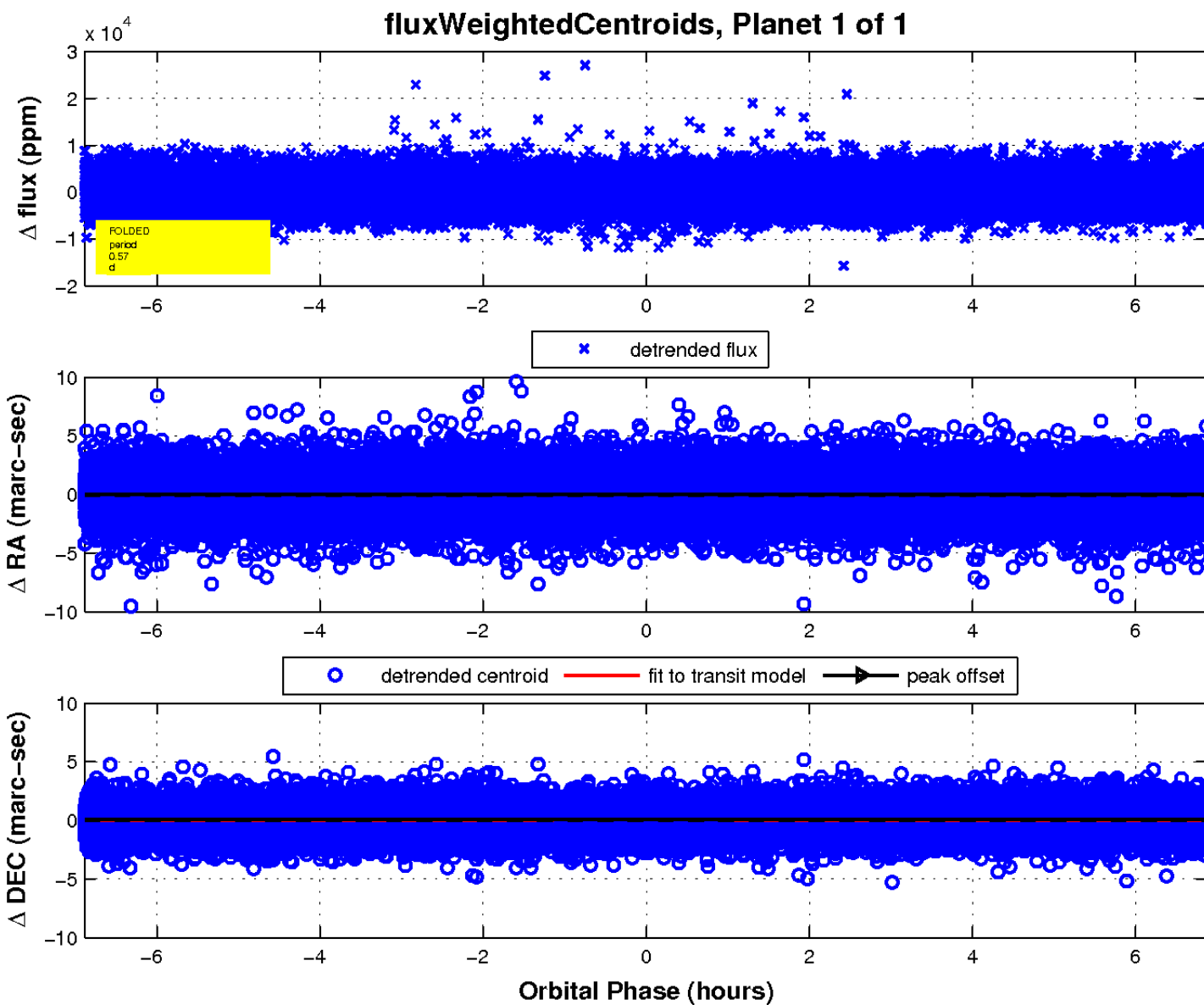
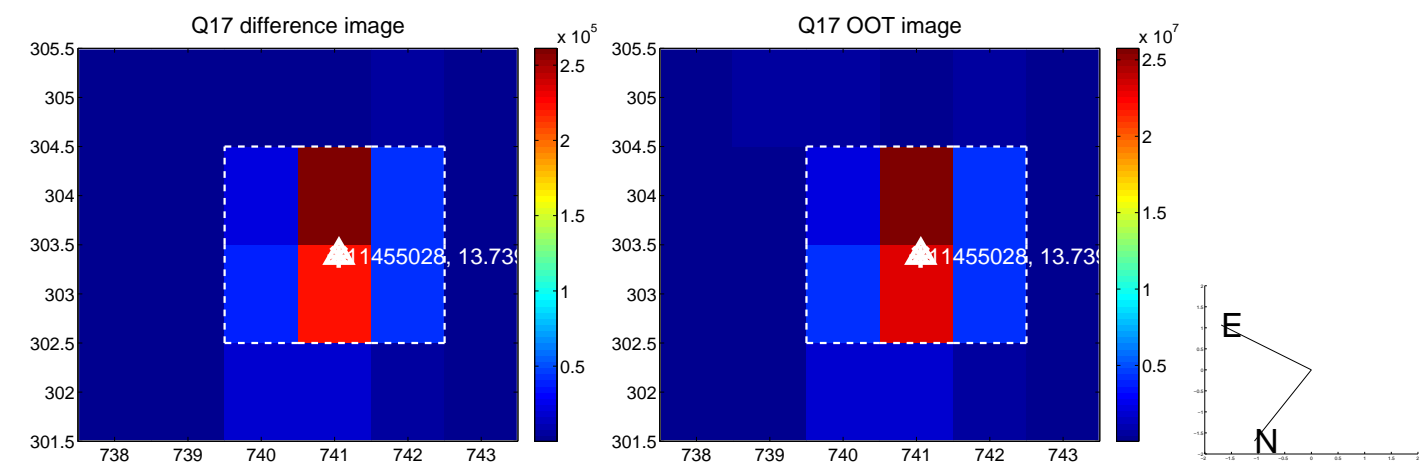
white \times : KIC target position; $+$: OOT centroid; \triangle : difference centroid. red \times : large negative pixel value.



white \times : KIC target position; +: OOT centroid; \triangle : difference centroid. red \times : large negative pixel value.



white \times : KIC target position; $+$: OOT centroid; \triangle : difference centroid. red \times : large negative pixel value.



UKIRT Image

Declination

