

KIC 011397385

Q1-17 DR25 TCE Parameters

TCE	Run Type	KOI?	Period (Days)	Epoch (BKJD)	Depth (ppm)	Duration (Hours)	MES	SNR	R_{\star} (R_{\odot})	T_{\star} (K)	R_p (R_{\oplus})	S_p (S_{\oplus})
011397385-01	OBS	No	372.670817	303.811175	1411.5	28.971	7.6	7.8	0.82	4989	6.18	0.43

Robovetter Results

TCE	Run Type	Disp	Score	N	S	C	E	Comments
011397385-01	OBS	FP	0.00	1	0	0	0	INDIV_TRANS_MARSHALL—LPP_DV—ALL_TRANS_CHASES—INCONSISTENT_TRANS—CENT_FEW_DIFFS

Notes: OBS = Observed. INJ = Injected. INV = Inverted. SCR = Scrambled.

N = Not Transit-Like. S = Stellar Eclipse. C = Centroid Offset. E = Ephemeris Match.

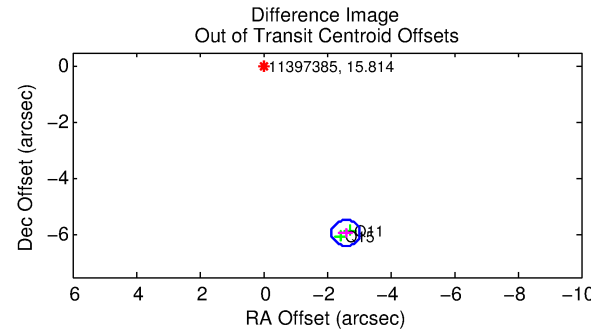
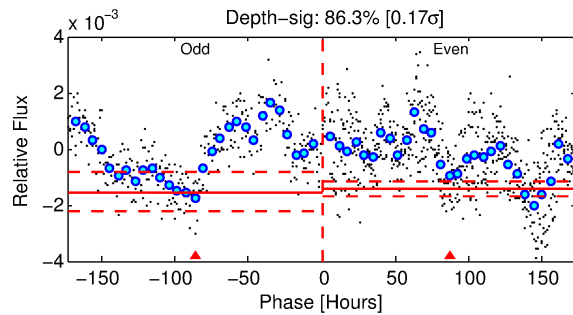
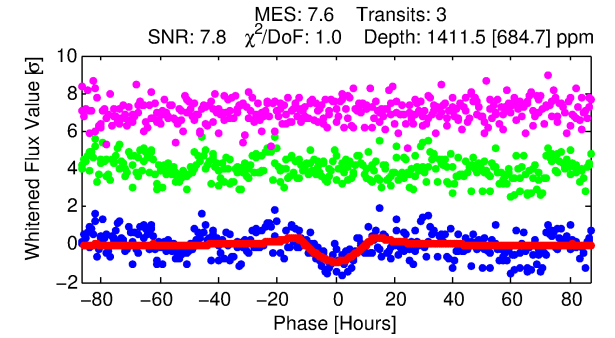
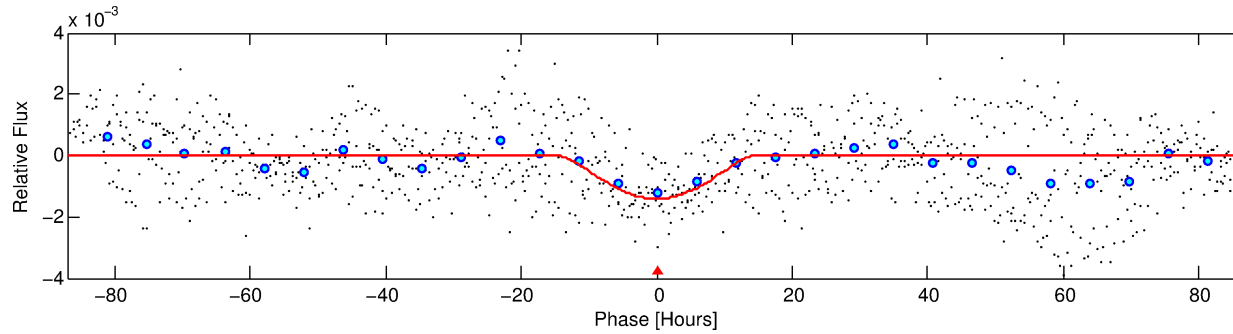
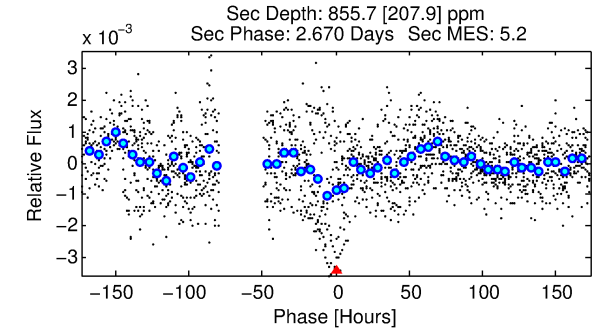
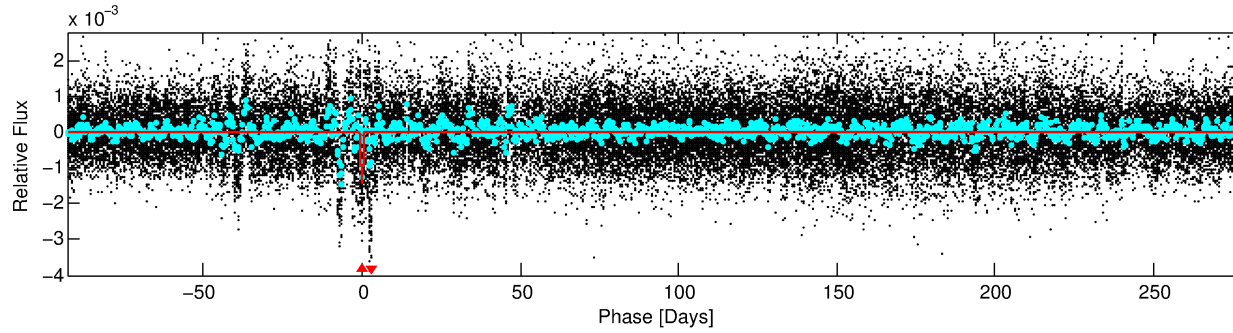
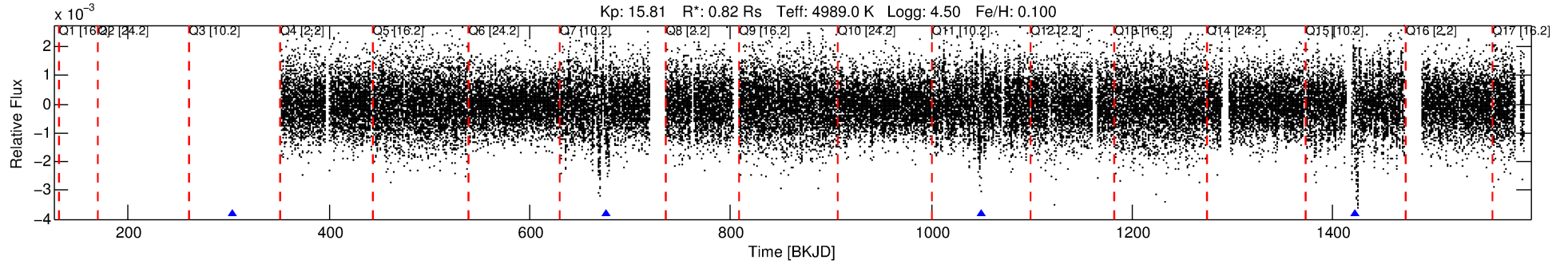
See http://exoplanetarchive.ipac.caltech.edu/docs/API_kepcandidate_columns.html#proj_disp_col for comment definitions.

Ephemeris Match Information For 011397385-01

No Significant Match Found

DV One-Page Summary

KIC: 11397385 Candidate: 1 of 1 Period: 372.671 d



DV Fit Results:

Period = 372.67082 [0.04442] d
Epoch = 303.8112 [0.0936] BKJD
Rp/R* = 0.0692 [0.2173]
a/R* = 37.21 [25.45]
b = 1.00 [0.29]
Seff = 0.43 [0.09]
Teq = 206 [11] K
Rp = 6.18 [19.44] Re
a = 0.9335 [0.0965] AU
Ag = 10725.27 [67445.45] [0.16 σ]
Teff = 3244 [5099] K [0.60 σ]

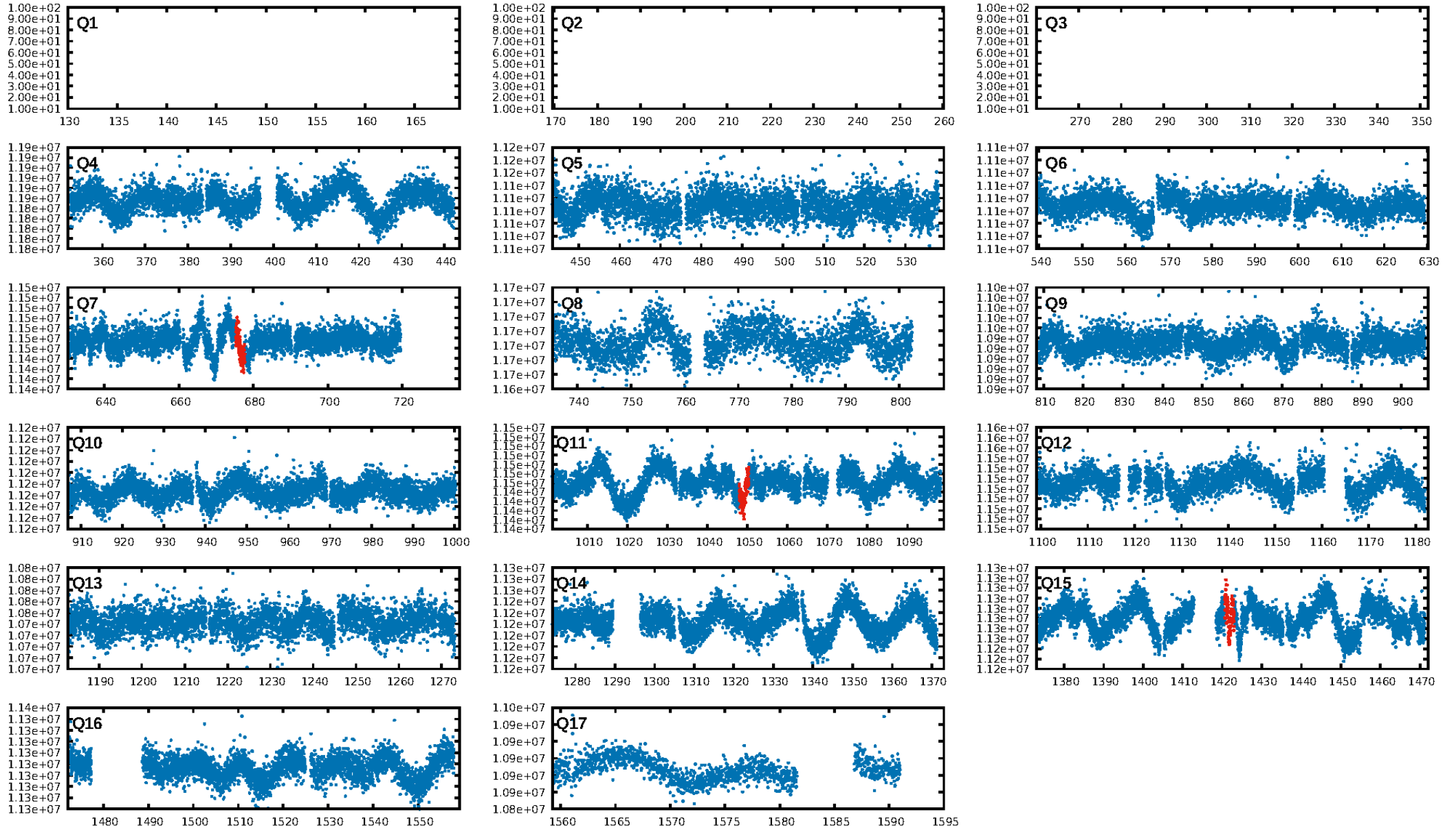
DV Diagnostic Results:

ShortPeriod-sig: N/A
LongPeriod-sig: N/A
ModelChiSquare2-sig: 6.2%
ModelChiSquareGoF-sig: 99.8%
Bootstrap-pfa: 2.16e-09
RollingBand-fgt: 1.00 [3/3]
GhostDiagnostic-chr: -1.382
Centroid-sig: 0.1%
Centroid-so: 5.175 arcsec [2.96 σ]
OotOffset-rm: 6.475 arcsec [43.02 σ]
KicOffset-rm: 6.578 arcsec [45.27 σ]
OotOffset-st: 0/2/0/0 [2]
KicOffset-st: 0/2/0/0 [2]
DiffImageQuality-fgm: 0.00 [0/2]
DiffImageOverlap-fno: 1.00 [3/3]

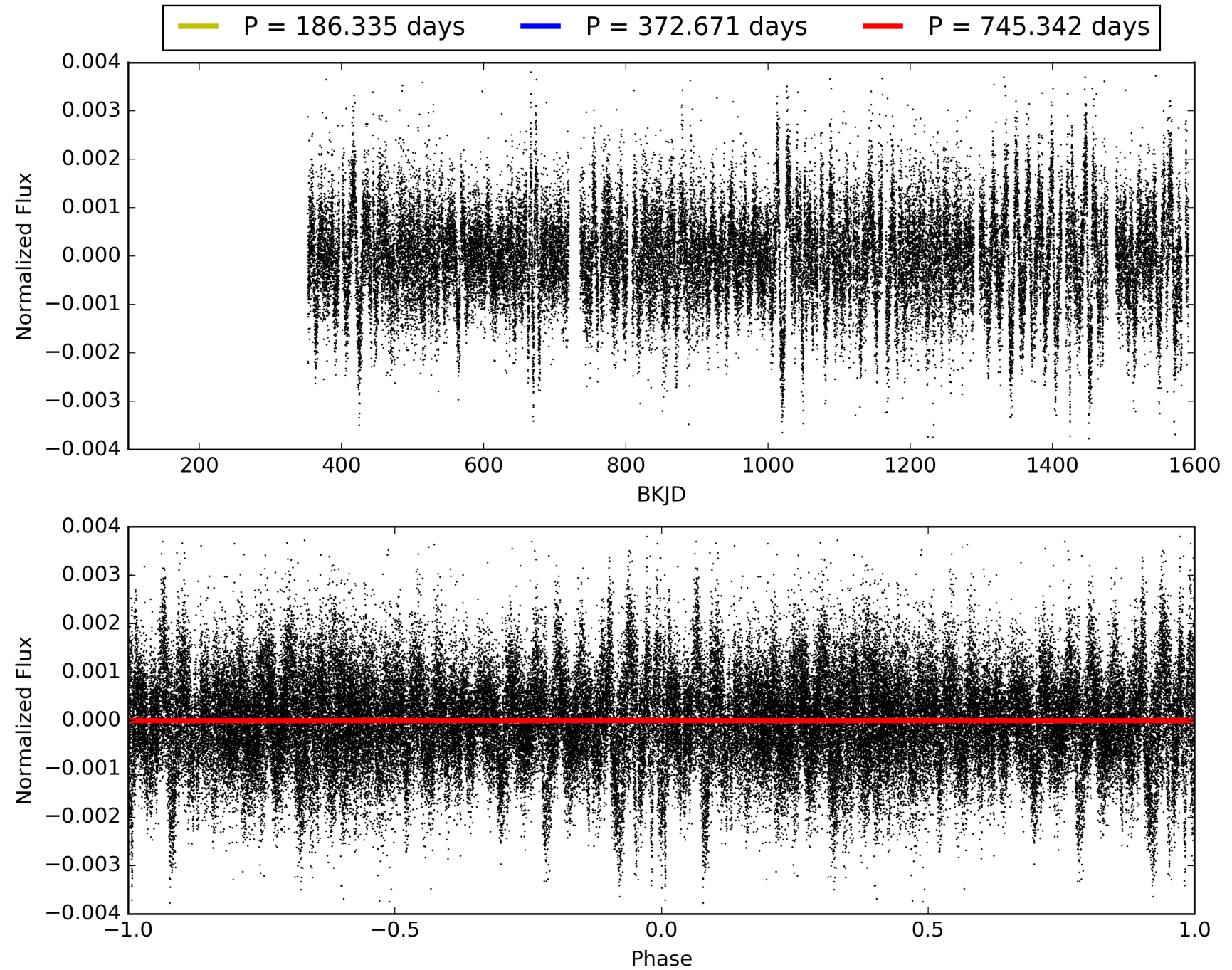
Software Revision: svn+ssh://murzim/repo/soc/tags/release/9.3.42@60958 -- Date Generated: 28-Jan-2016 20:24:13 Z

This Data Validation Report Summary was produced in the Kepler Science Operations Center Pipeline at NASA Ames Research Center

TCE 011397385-01, PDC Light Curves

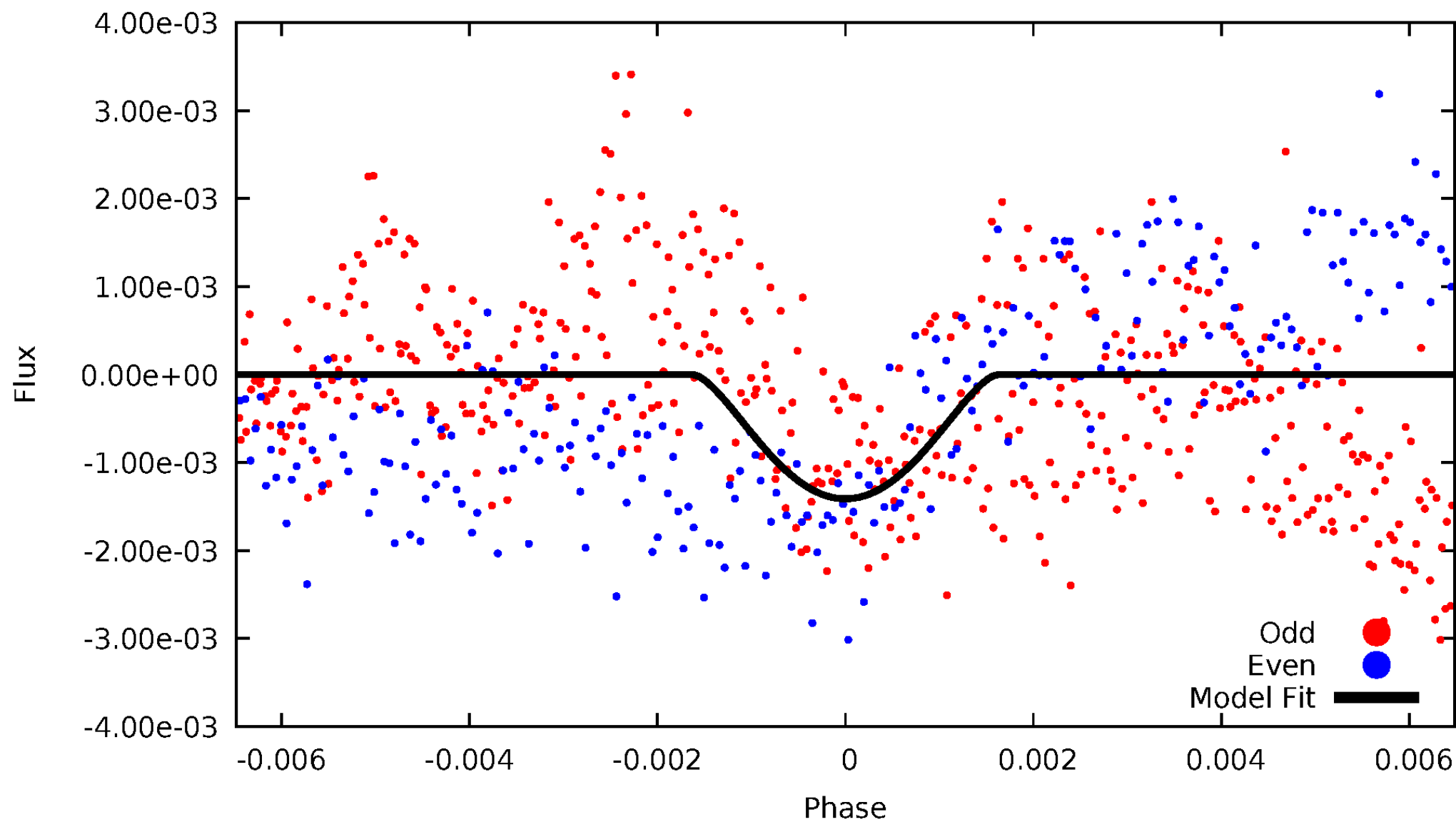


TCE 011397385-01



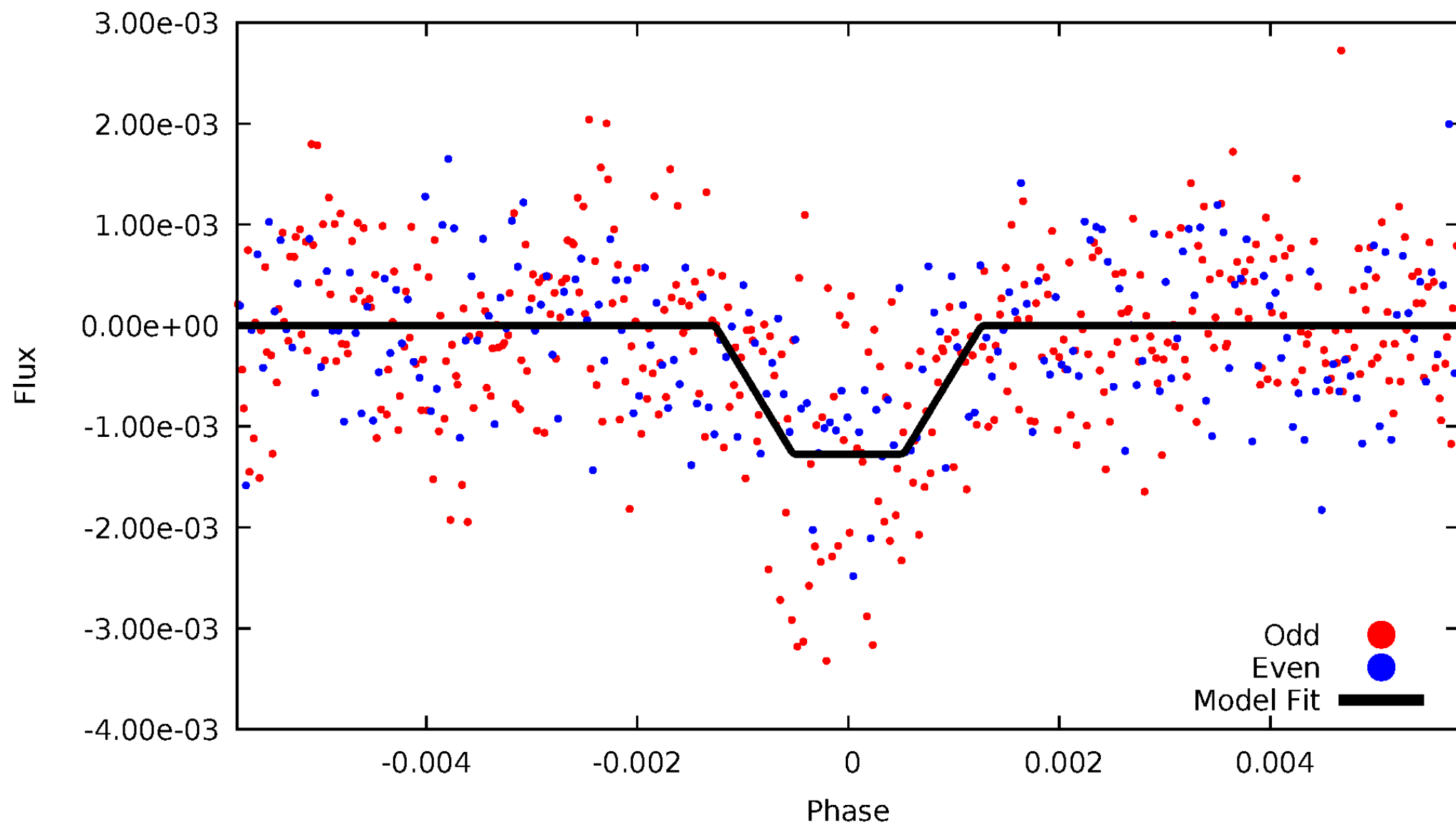
DV Odd/Even

TCE 011397385-01



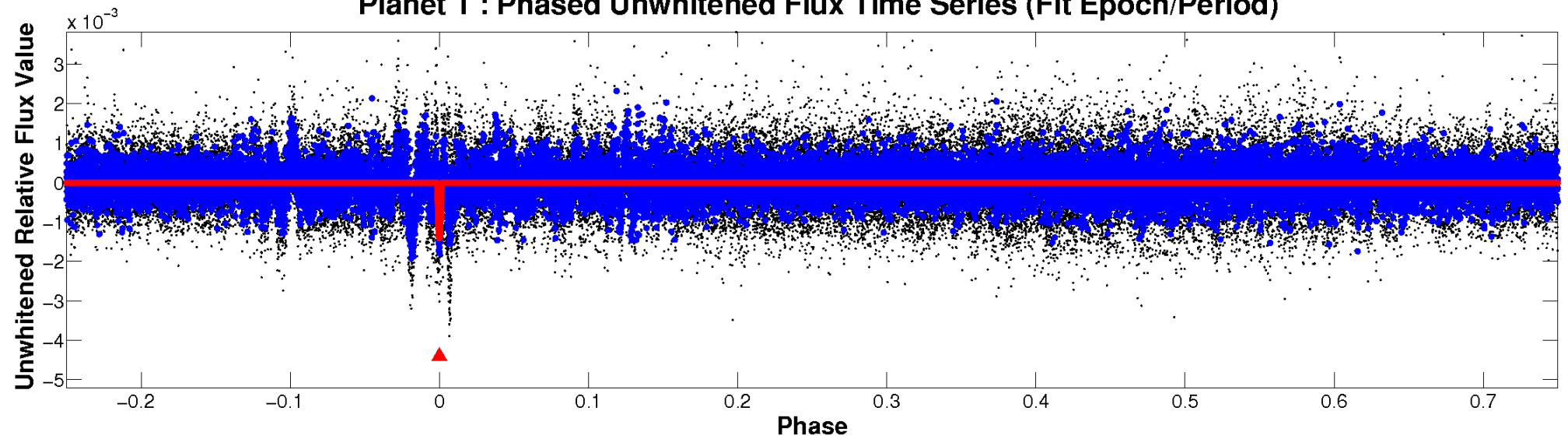
ALT Odd/Even

TCE 011397385-01

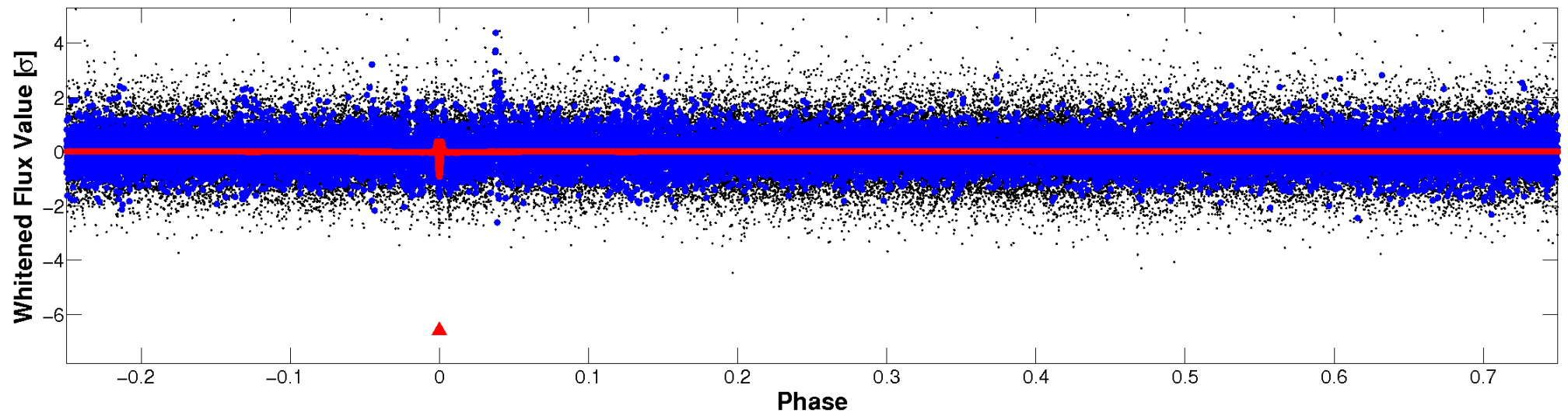


Non-Whitened Vs. Whitened Light Curve

Planet 1 : Phased Unwhitened Flux Time Series (Fit Epoch/Period)

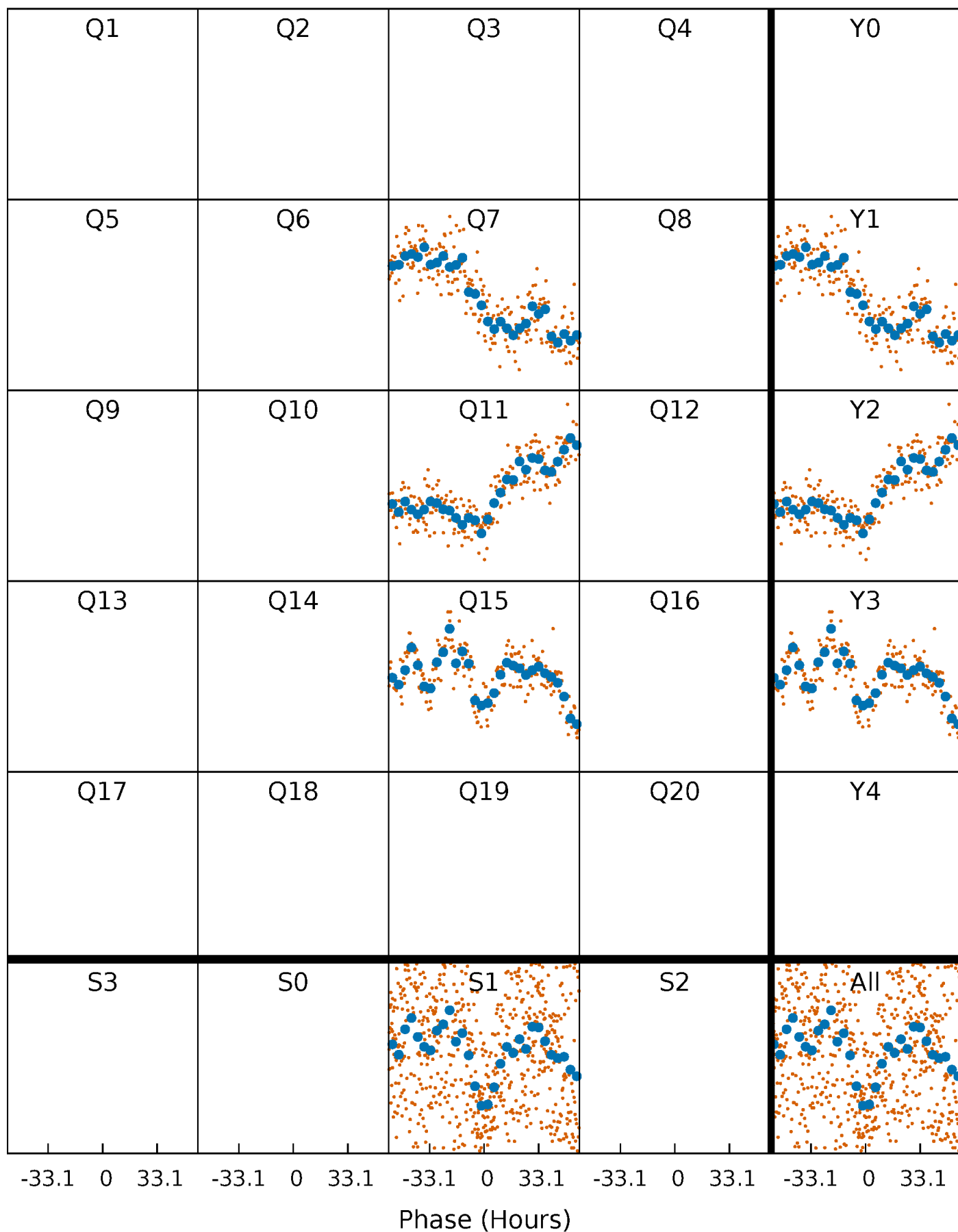


Planet 1 : Phased Whitened Flux Time Series (Fit Epoch/Period)



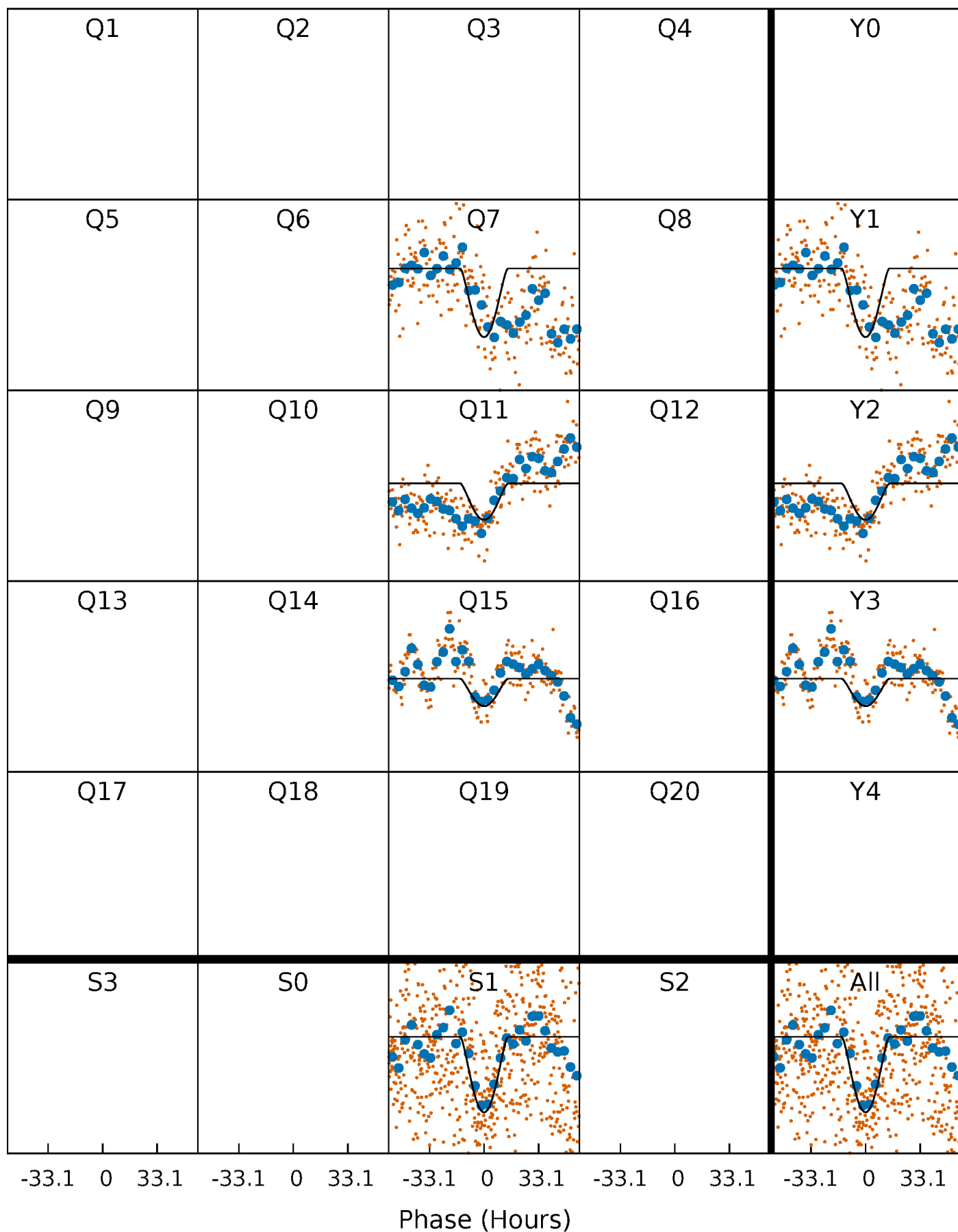
PDC Quarter-Phased Transit Curves

TCE 011397385-01 P=372.670817 Days $T_0=303.811175$ (BKJD)



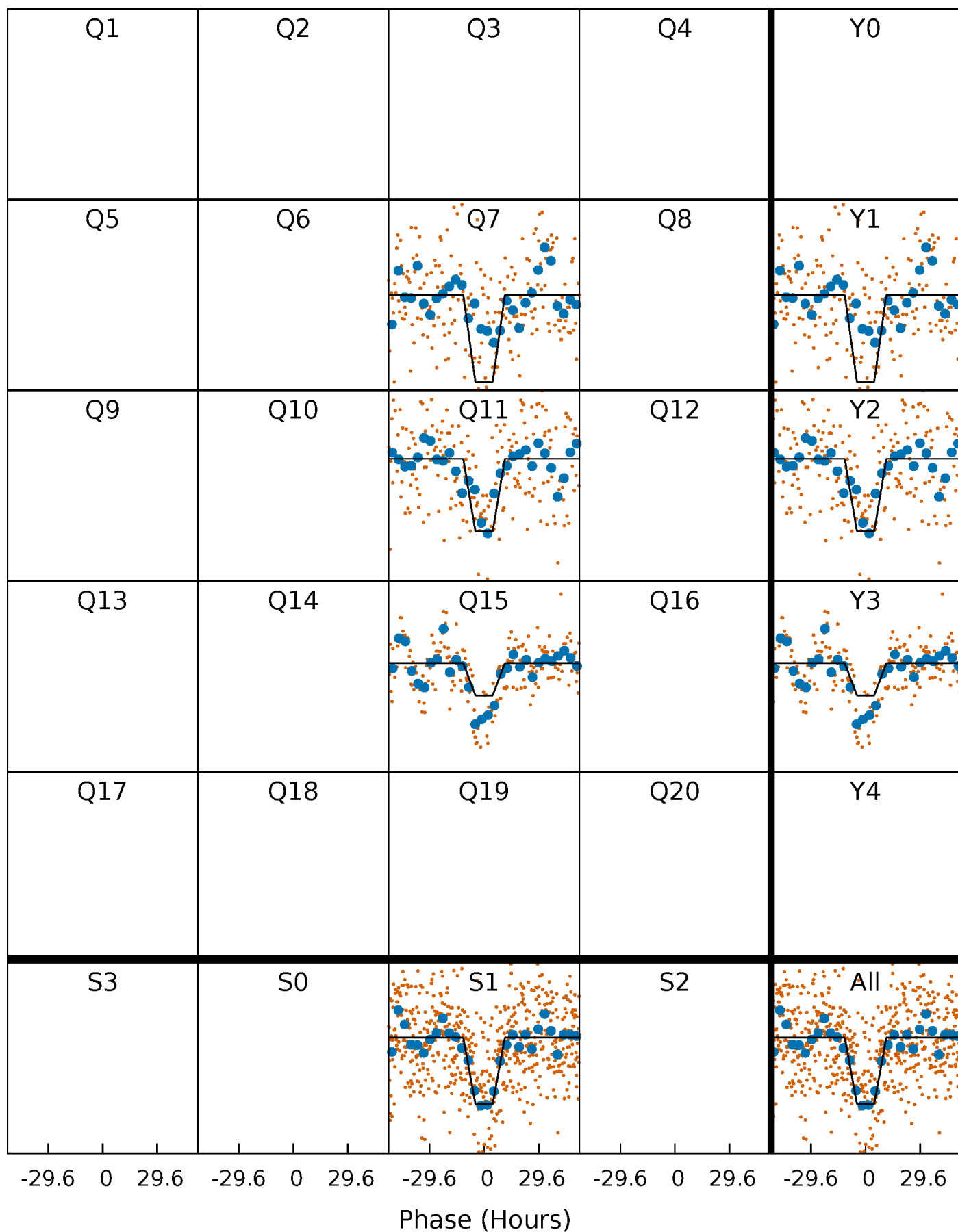
DV Quarter-Phased Transit Curves

TCE 011397385-01 P=372.670817 Days $T_0=303.811175$ (BKJD)



Alt. Detrend Quarter-Phased Transit Curves

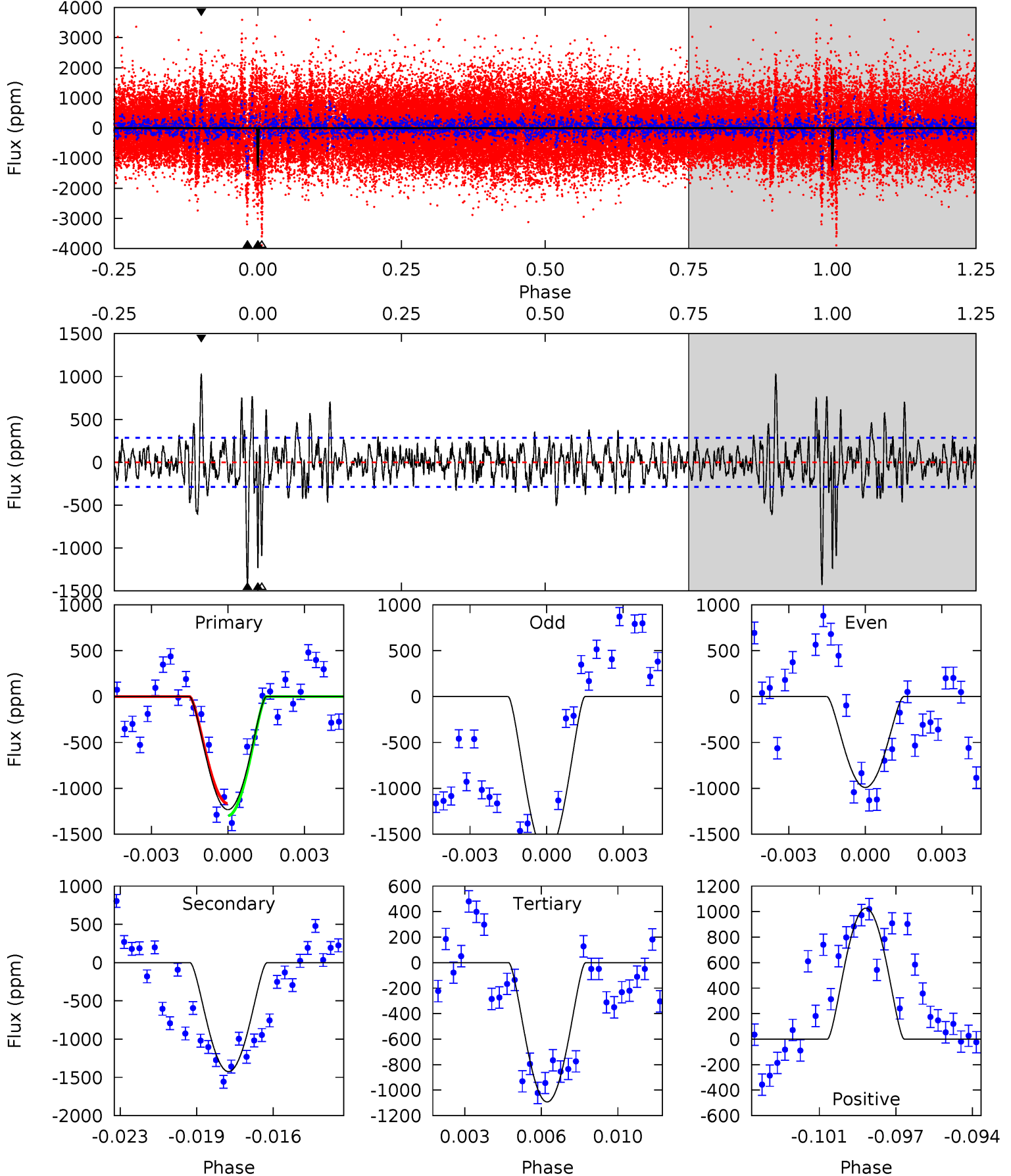
TCE 011397385-01 P=372.680890 Days $T_0=303.785270$ (BKJD)



DV Model-Shift Uniqueness Test

011397385-01, P = 372.670817 Days, E = 303.811175 Days

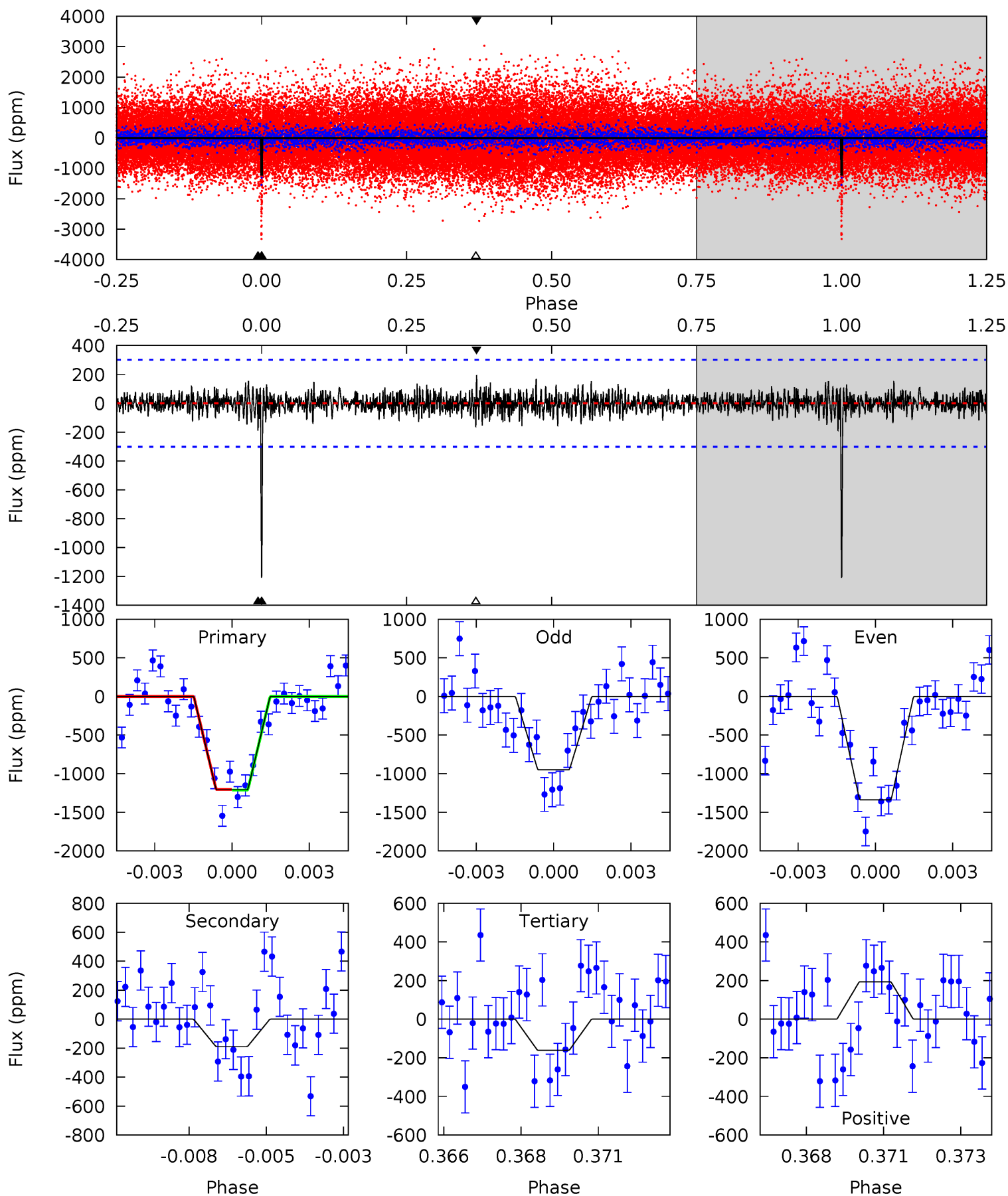
Pri	Sec	Ter	Pos	FA ₁	FA ₂	F _{Red}	Pri-Ter	Pri-Pos	Sec-Ter	Sec-Pos	Odd-Evn	DMM	Shape	TAT
22.5	26.0	20.0	18.8	5.24	2.94	3.37	2.56	3.75	6.07	7.26	6.23	1.10	0.42	1.21



Alt Model-Shift Uniqueness Test

011397385-01, $P = 372.680890$ Days, $E = 303.785270$ Days

Pri	Sec	Ter	Pos	FA ₁	FA ₂	F _{Red}	Pri-Ter	Pri-Pos	Sec-Ter	Sec-Pos	Odd-Evn	DMM	Shape	TAT
21.2	3.31	2.83	3.40	5.28	3.02	0.84	18.4	17.8	0.48	-0.09	3.19	1.27	0.14	0.07



Stellar Parameters For KIC 011397385

	$T_{\text{eff}}(K)$	$\log(g)$	[Fe/H]	$R (R_{\odot})$	$M(M_{\odot})$	$p_{\star} (\text{g}\cdot\text{cm}^{-3})$
	4989^{+174}_{-174}	$4.504^{+0.094}_{-0.077}$	$0.100^{+0.250}_{-0.300}$	$0.819^{+0.082}_{-0.091}$	$0.781^{+0.085}_{-0.063}$	$2.000^{+0.776}_{-0.435}$
	+3%/-3%	+2%/-2%	+250%/-300%	+10%/-11%	+11%/-8%	+39%/-22%
Source	KIC0	KIC0	KIC0	DSEP		

KIC = Kepler Input Catalog; PHO = Photometry; SPE = Spectroscopy; AST = Asteroseismology
 TRA = Transits; DESP = Dartmouth Models; MULT = Multiple Models

Secondary Eclipse Parameters for KIC 011397385-01 / KOI

Detrend	Depth (ppm)	$R_p (R_{\oplus})$	$T_{max} (K)$	$T_{obs} (K)$	A_{obs}
DV	-1424 ± 55	$16.22^{+15.32}_{-11.07}$	287^{+14}_{-13}	2935^{+1282}_{-456}	2669^{+23730}_{-1971}
Alt.	-189 ± 57	$14.10^{+15.80}_{-9.94}$	288^{+13}_{-13}	2344^{+865}_{-367}	435^{+4166}_{-344}

T_{max} = Theoretical Maximum Planetary Temperature

T_{obs} = Observed Planetary Temperature (Assuming $A=0.3$)

A_{obs} = Observed Albedo (Assuming $T=0$)

If a secondary eclipse is present, the system is likely an EB if $T_{obs} \gg T_{max}$ AND $A_{obs} \gg 1.0$

DV Centroid Data

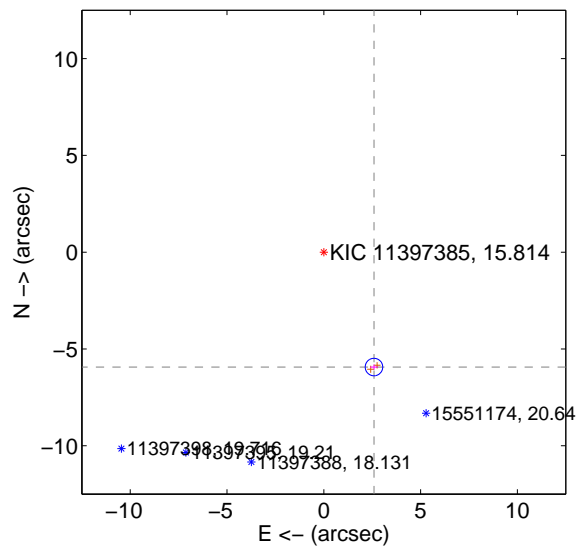
Supplemental centroid analysis for 011397385-01. Kepler magnitude: 15.81. Transit SNR 7.82

There are 0 quarters with good PRF difference image offsets

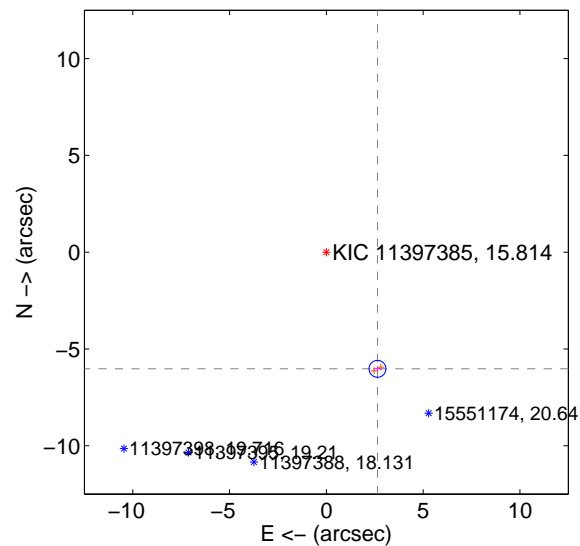
The direct PRF centroid is offset from the target star catalog position by about 0.09 arcsec

	Distance in arcsec	Distance / σ	Δ RA	Δ Dec
PRF-fit source offset from OOT	6.475 ± 0.151	43.02	-2.591 ± 0.207	-5.934 ± 0.137
PRF-fit source offset from KIC position	6.578 ± 0.145	45.27	-2.641 ± 0.216	-6.025 ± 0.127
photometric centroid source offset	5.18 ± 1.75	2.96	4.98 ± 1.76	1.39 ± 1.58

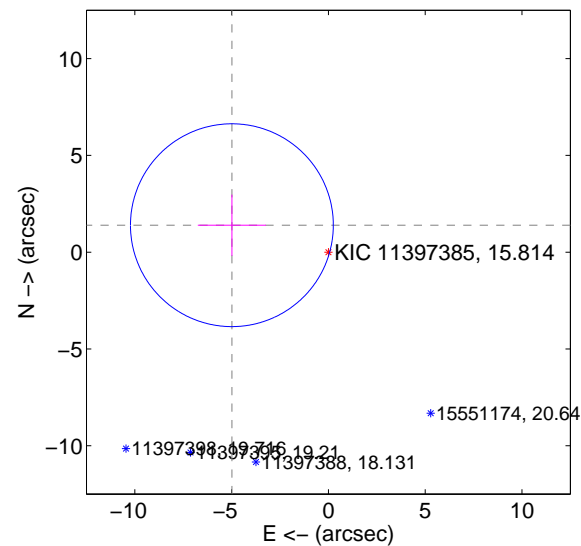
offset from difference PRF-fit to OOT PRF-fit



offset from difference PRF-fit to KIC position



offset from photometric centroids

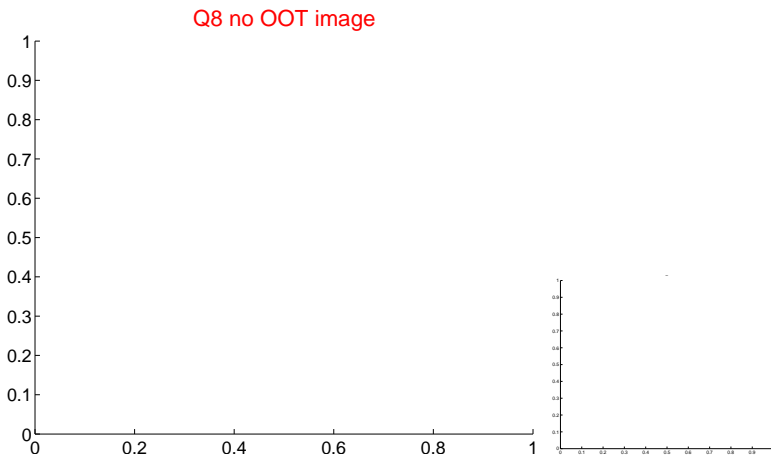
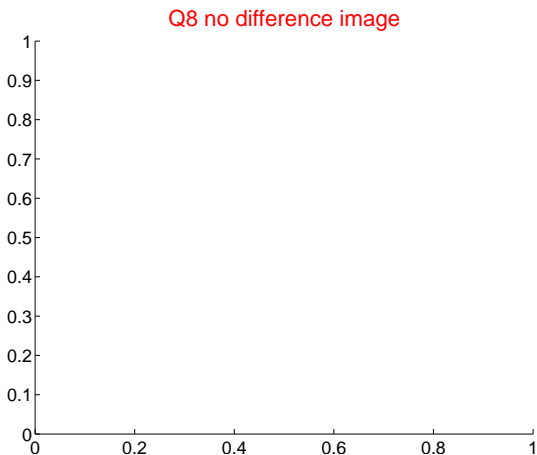
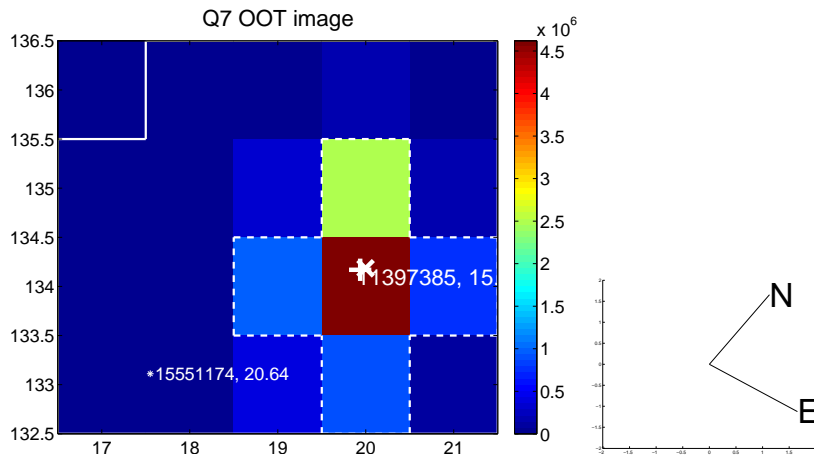
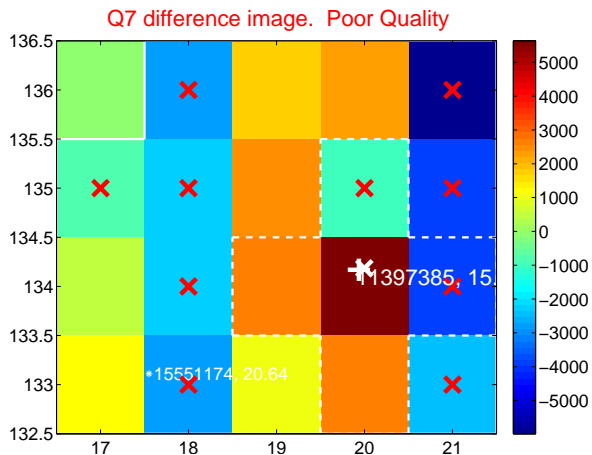
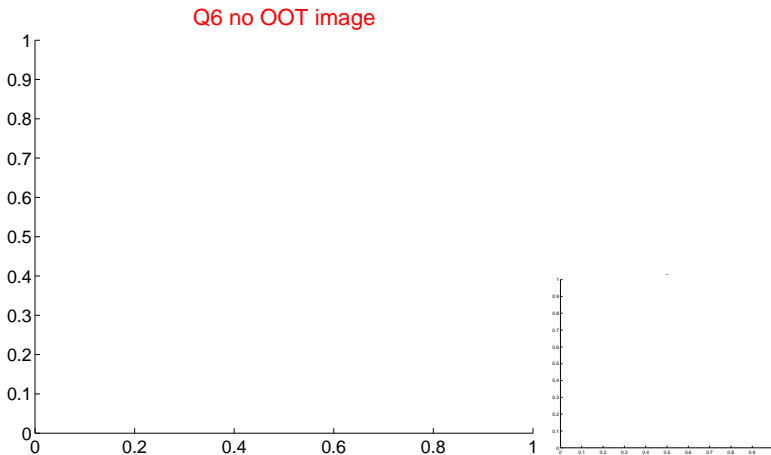
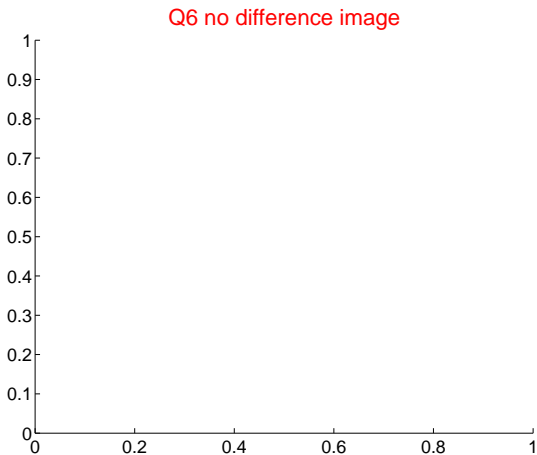
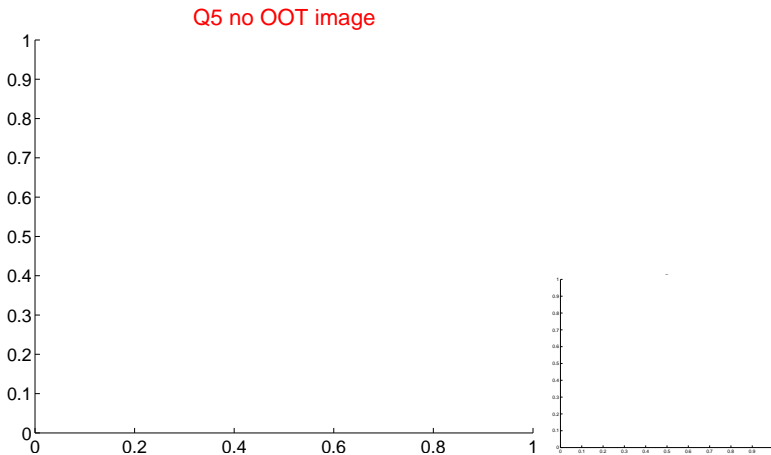
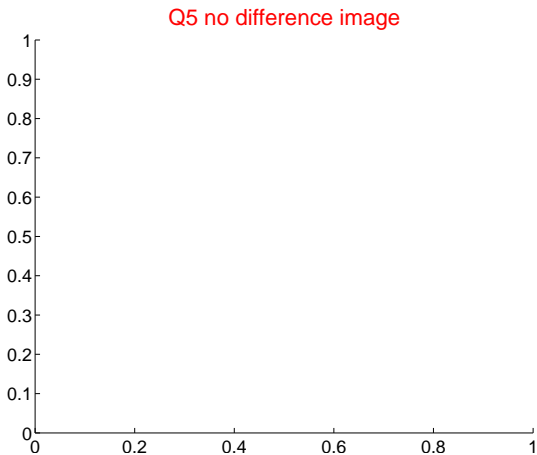


Centroid source offsets from the target star reconstructed from PRF and photometric centroids. Sky blue crosses: good quarterly centroid offsets; Vermillion crosses: bad quarterly centroid offsets; magenta cross: average over quarters. Length of the crosses: one- σ uncertainty. Blue circle: three- σ . Red *: target star. Blue *: Other stars. Text next to a star gives its KIC ID and kepmag. KIC IDs > 15,000,000 are from the UKIRT catalog.

white \times : KIC target position; $+$: OOT centroid; \triangle : difference centroid. red \times : large negative pixel value.



white \times : KIC target position; $+$: OOT centroid; \triangle : difference centroid. red \times : large negative pixel value



white \times : KIC target position; $+$: OOT centroid; \triangle : difference centroid. red \times : large negative pixel value.

Q9 no difference image



Q9 no OOT image



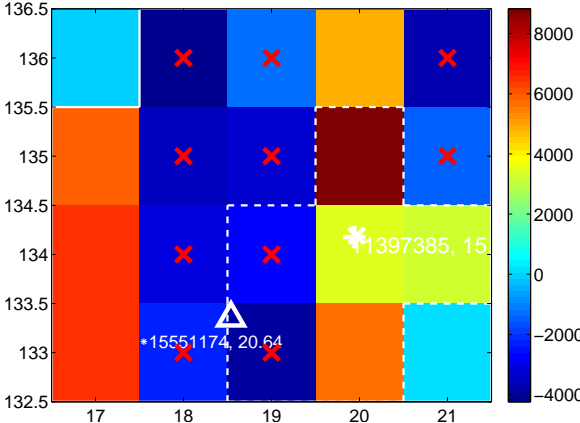
Q10 no difference image



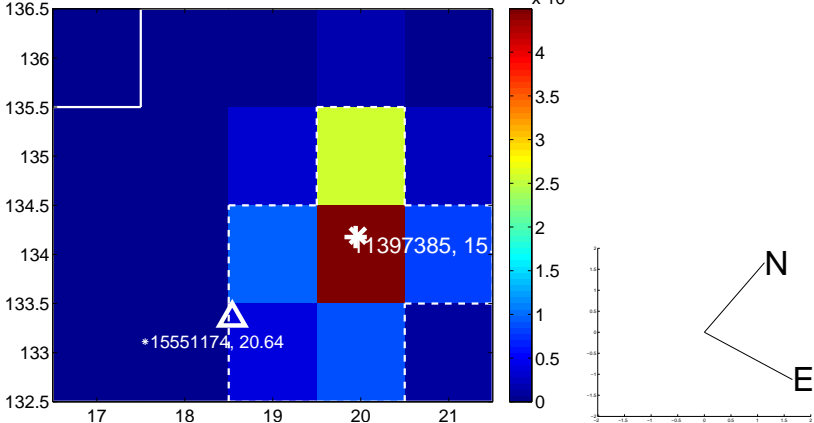
Q10 no OOT image



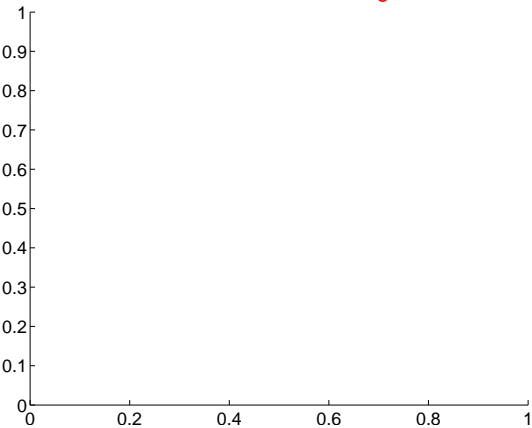
Q11 difference image. Poor Quality



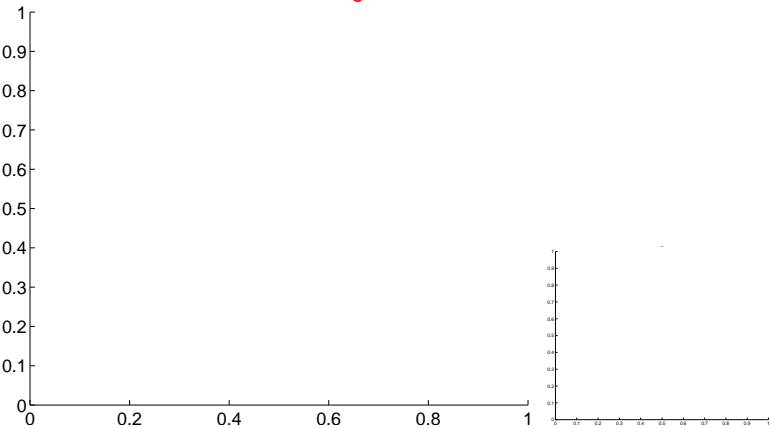
Q11 OOT image



Q12 no difference image



Q12 no OOT image



white \times : KIC target position; $+$: OOT centroid; \triangle : difference centroid. red \times : large negative pixel value.

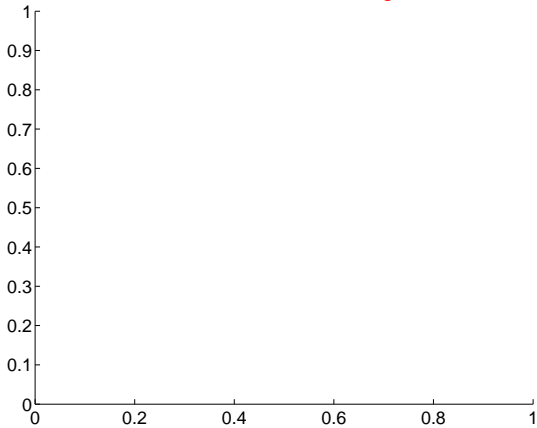
Q13 no difference image



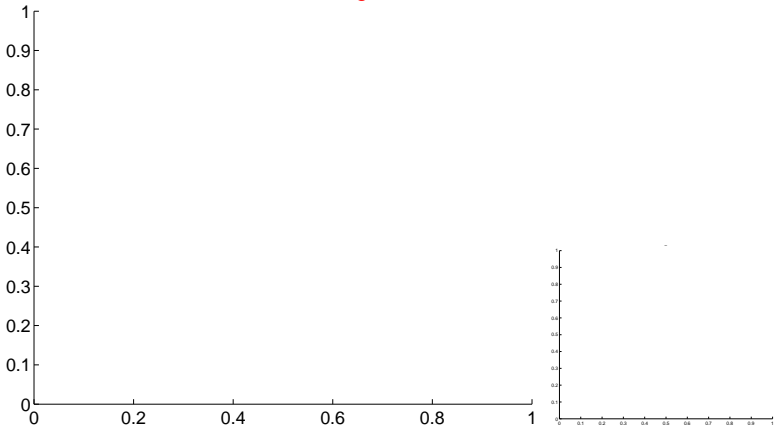
Q13 no OOT image



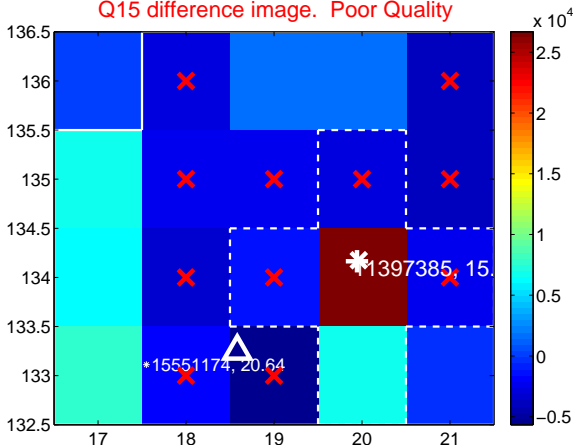
Q14 no difference image



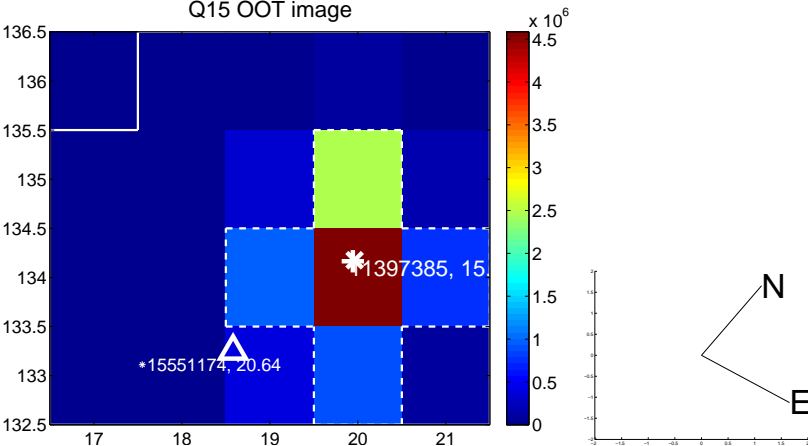
Q14 no OOT image



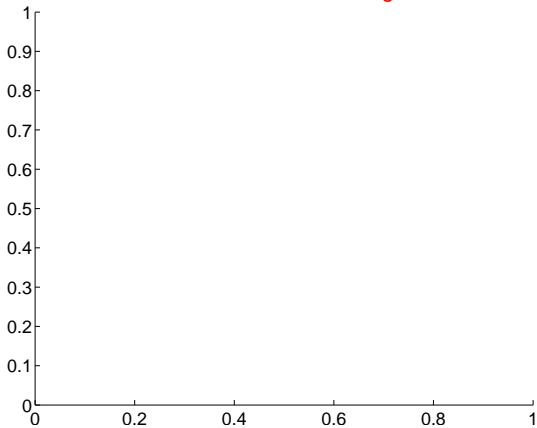
Q15 difference image. Poor Quality



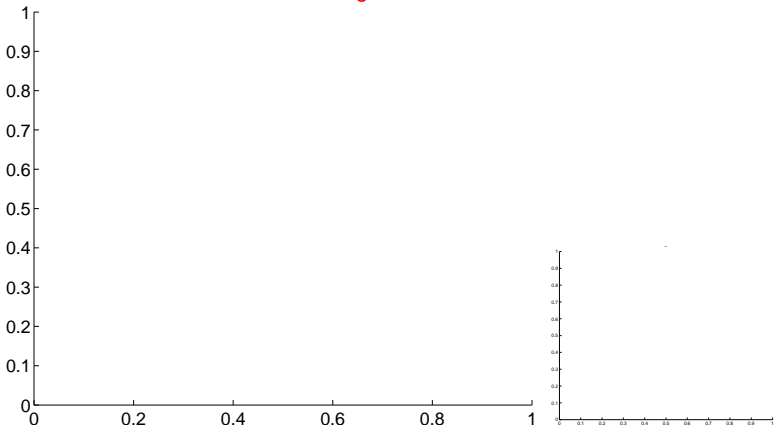
Q15 OOT image



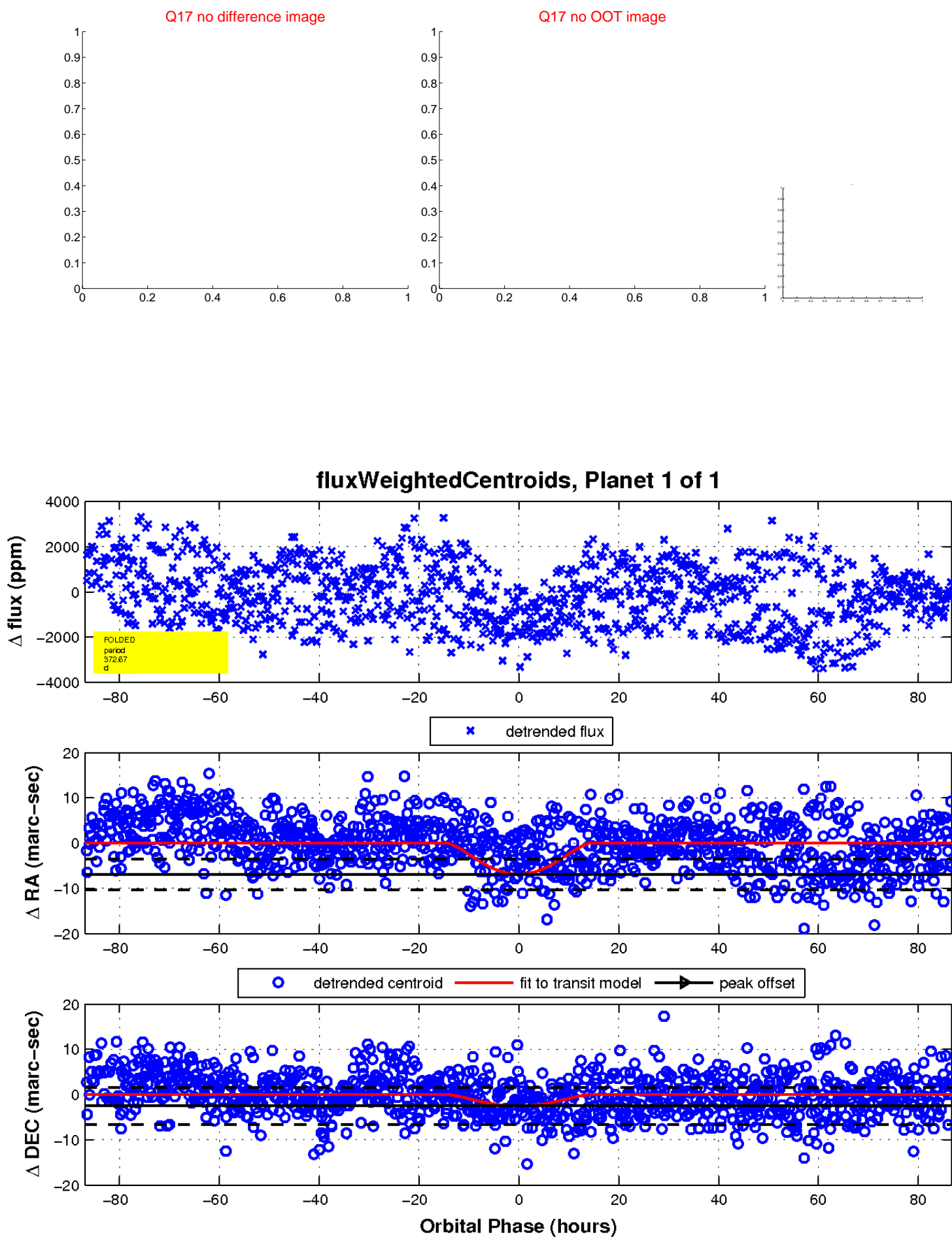
Q16 no difference image



Q16 no OOT image



white \times : KIC target position; $+$: OOT centroid; \triangle : difference centroid. red \times : large negative pixel value.



UKIRT Image

Declination

