

KIC 011338940

Q1-17 DR25 TCE Parameters

TCE	Run Type	KOI?	Period (Days)	Epoch (BKJD)	Depth (ppm)	Duration (Hours)	MES	SNR	R_{\star} (R_{\odot})	T_{\star} (K)	R_p (R_{\oplus})	S_p (S_{\oplus})
011338940-01	OBS	No	8.006126	138.813005	148.3	37.709	10.0	16.0	1.88	6158	4.64	630.12

Robovetter Results

TCE	Run Type	Disp	Score	N	S	C	E	Comments
011338940-01	OBS	FP	0.00	1	0	0	0	LPP_DV

Notes: OBS = Observed. INJ = Injected. INV = Inverted. SCR = Scrambled.

N = Not Transit-Like. S = Stellar Eclipse. C = Centroid Offset. E = Ephemeris Match.

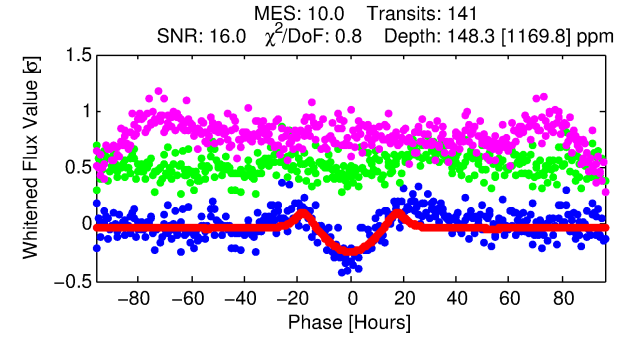
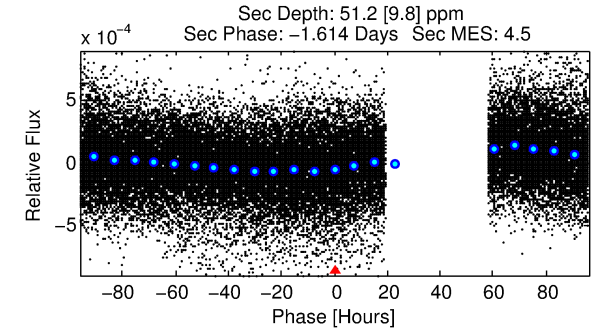
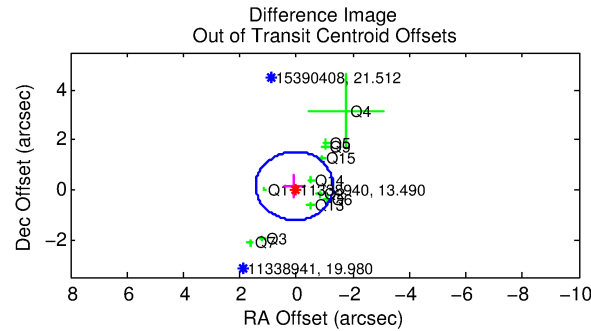
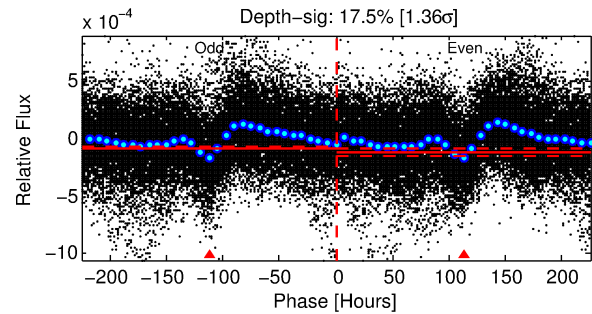
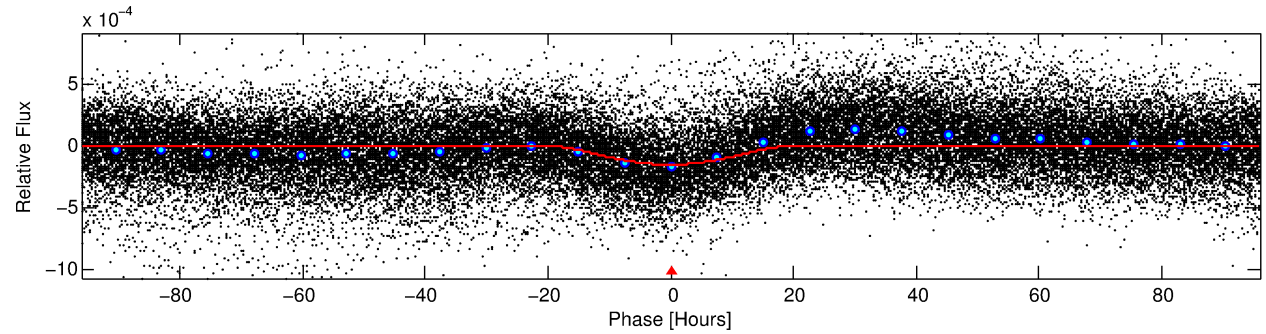
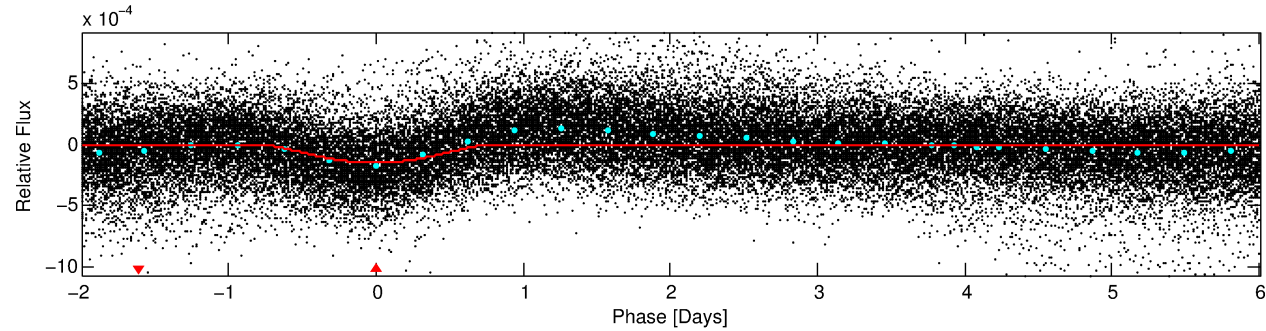
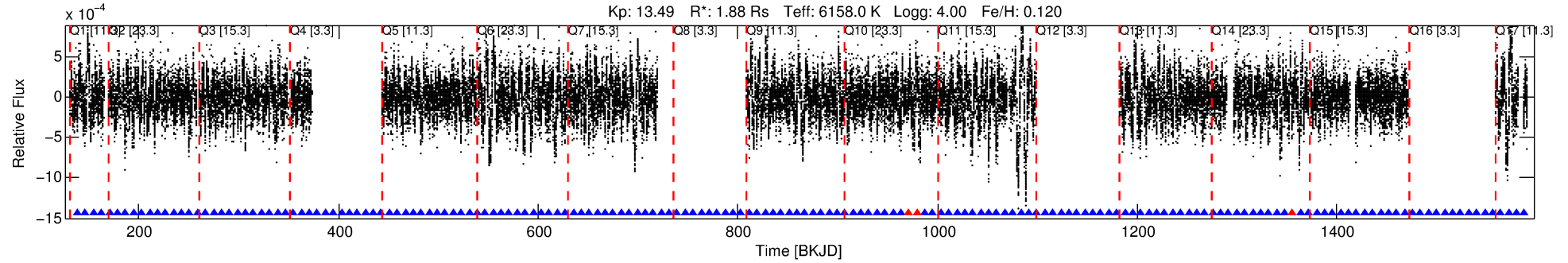
See http://exoplanetarchive.ipac.caltech.edu/docs/API_kepcandidate_columns.html#proj_disp_col for comment definitions.

Ephemeris Match Information For 011338940-01

No Significant Match Found

DV One-Page Summary

KIC: 11338940 Candidate: 1 of 1 Period: 8.006 d



DV Fit Results:

Period = 8.00613 [0.00034] d
Epoch = 138.8130 [0.0337] BKJD
Rp/R* = 0.0227 [0.0150]
a/R* = 1.07 [0.00]
b = 1.00 [0.15]
Seff = 630.12 [377.53]
Teff = 1278 [191] K
Rp = 4.64 [3.48] Re
a = 0.0848 [0.0299] AU
Ag = 9.38 [13.67] [0.61 σ]
Teffp = 3457 [1166] K [1.84 σ]

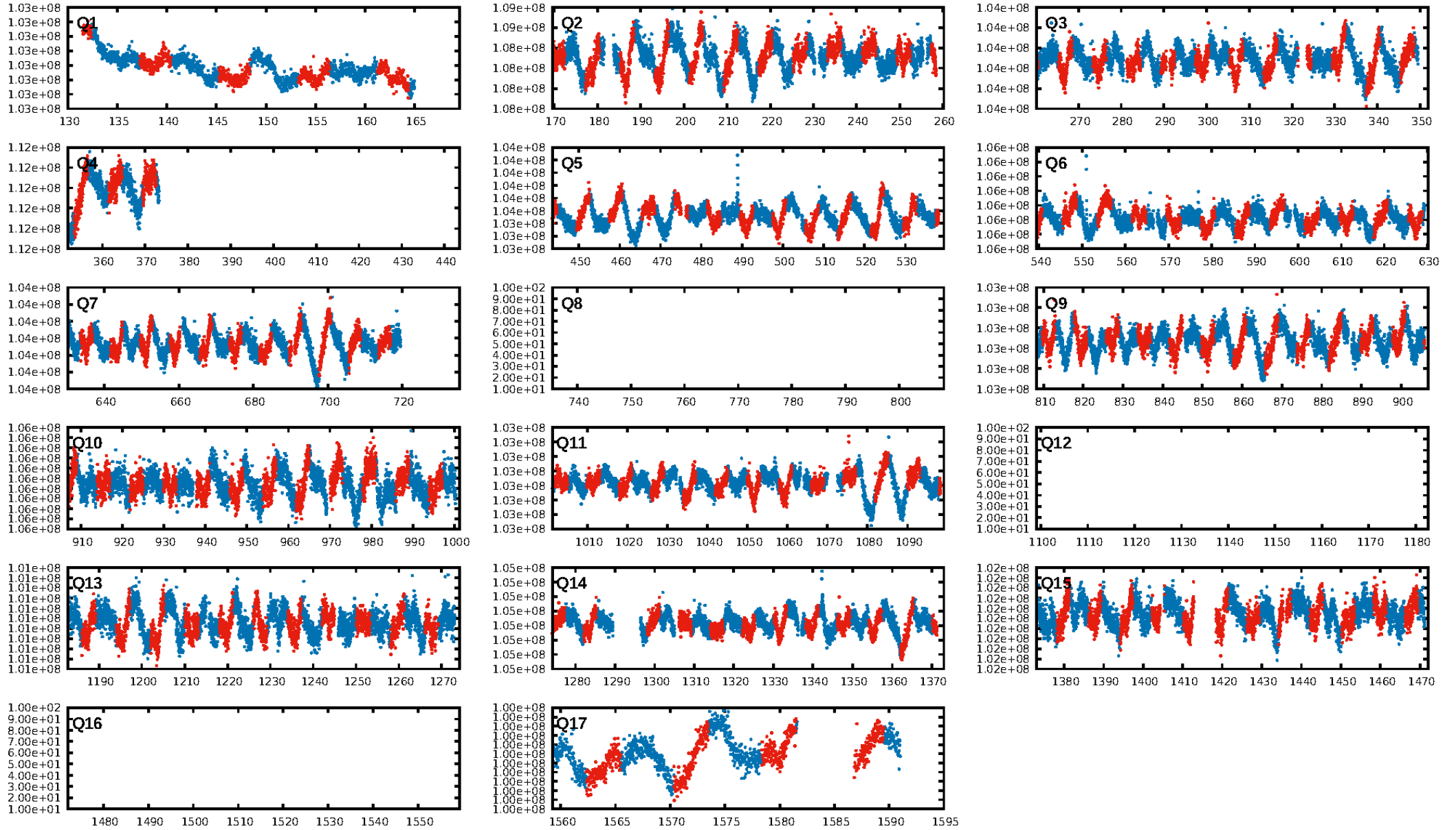
DV Diagnostic Results:

ShortPeriod-sig: N/A
LongPeriod-sig: N/A
ModelChiSquare2-sig: 100.0%
ModelChiSquareGof-sig: 100.0%
Bootstrap-pfa: 4.62e-24
RollingBand-fgt: 0.98 [126/129]
GhostDiagnostic-chr: 2.075
Centroid-sig: 0.0%
Centroid-so: 0.701 arcsec [2.38 σ]
OotOffset-rm: 0.162 arcsec [0.35 σ]
KicOffset-rm: 0.123 arcsec [0.29 σ]
OotOffset-st: 3/4/1/3 [11]
KicOffset-st: 3/4/1/3 [11]
DiffImageQuality-fgm: 0.91 [10/11]
DiffImageOverlap-fno: 1.00 [14/14]

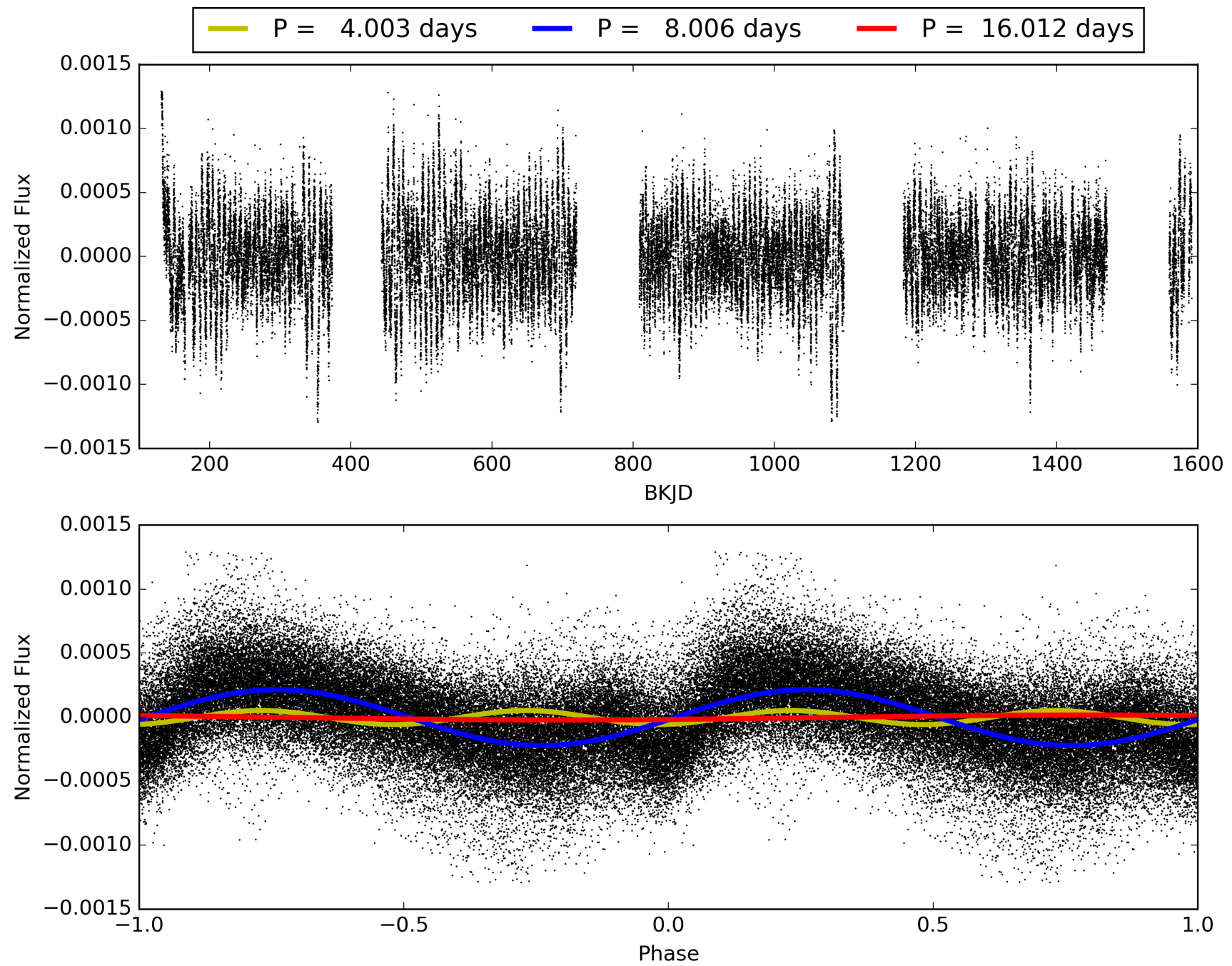
Software Revision: svn+ssh://murzim/repo/soc/tags/release/9.3.42@60958 -- Date Generated: 29-Jan-2016 00:39:13 Z

This Data Validation Report Summary was produced in the Kepler Science Operations Center Pipeline at NASA Ames Research Center

TCE 011338940-01, PDC Light Curves

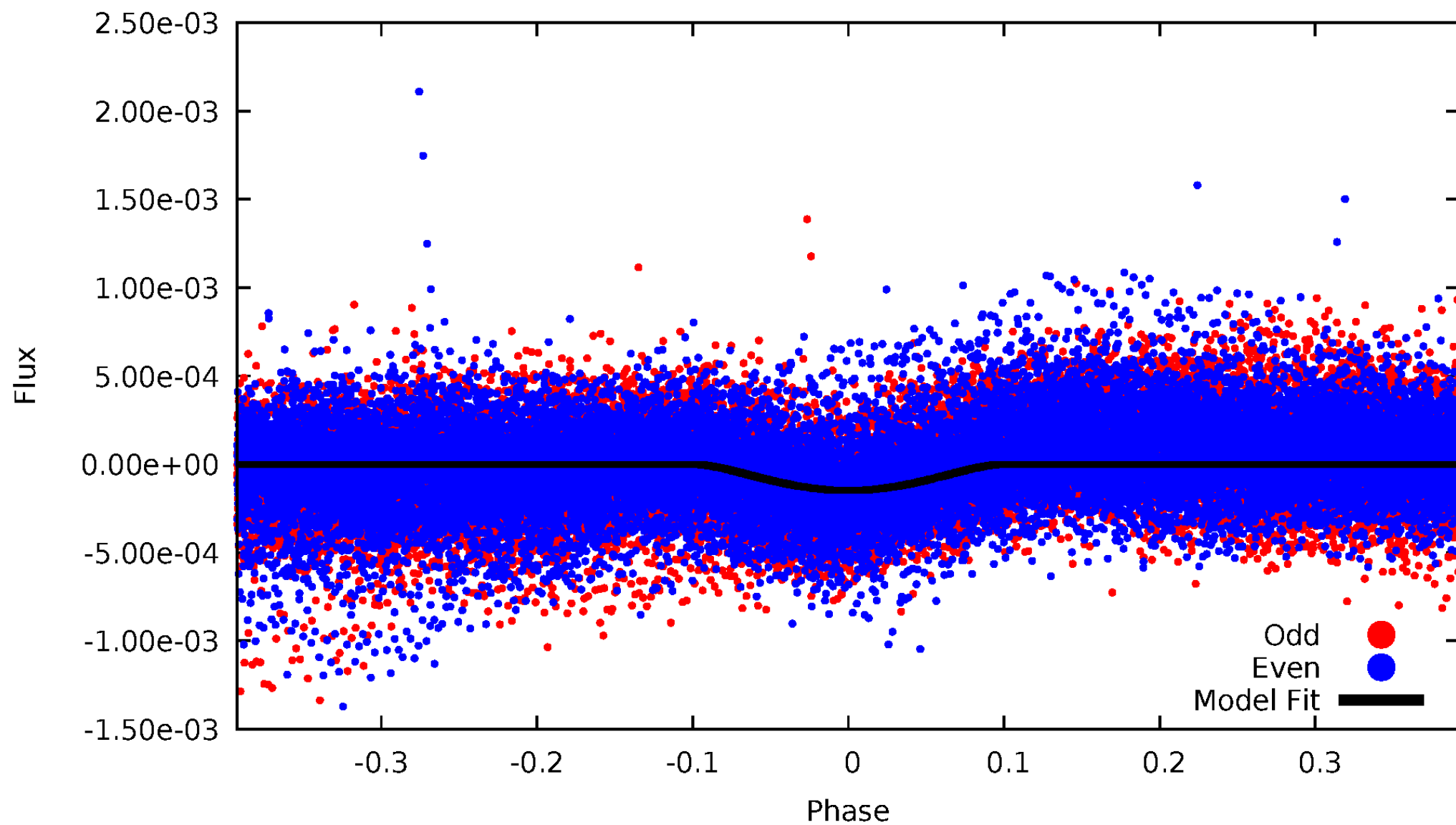


TCE 011338940-01



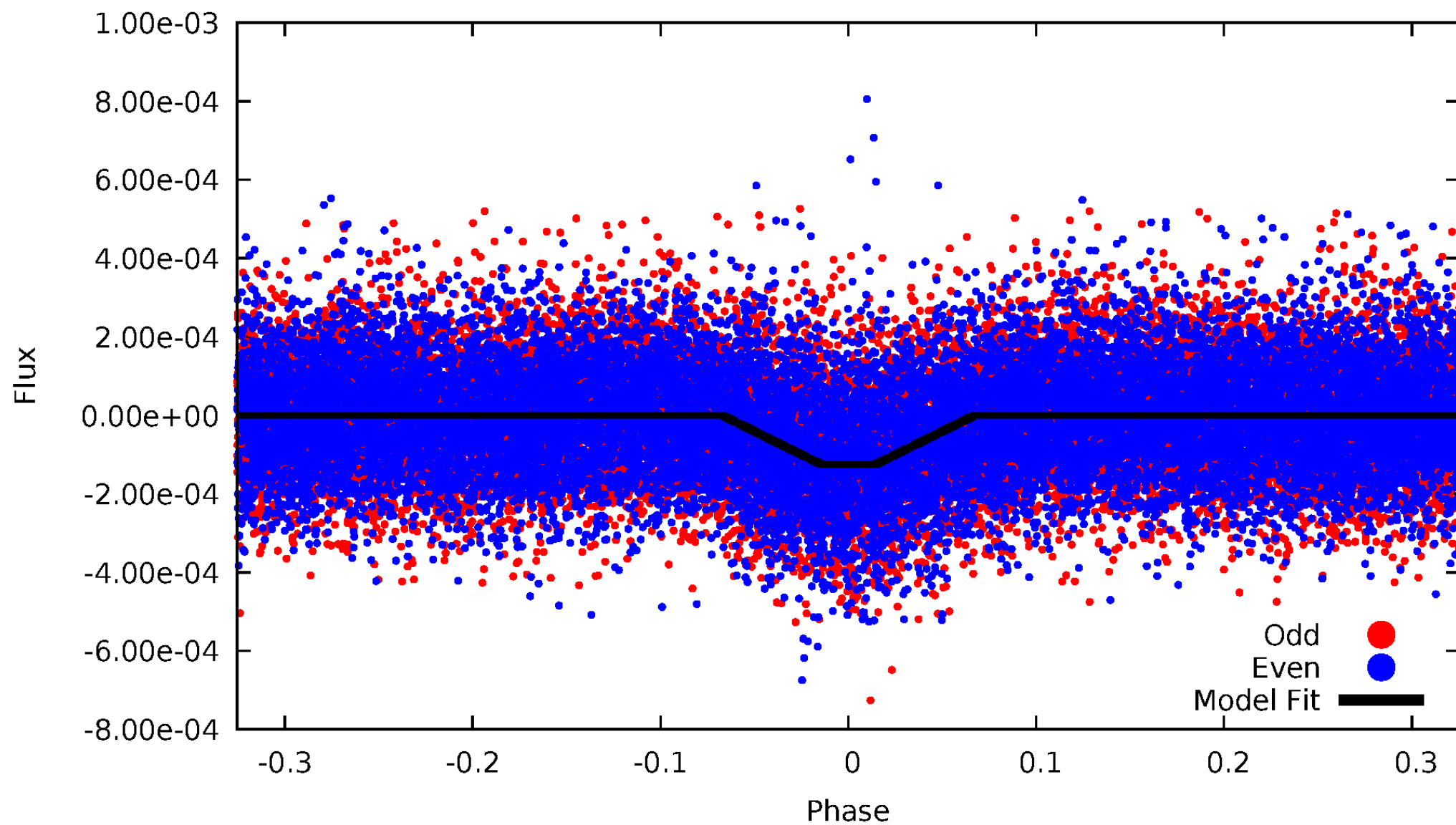
DV Odd/Even

TCE 011338940-01

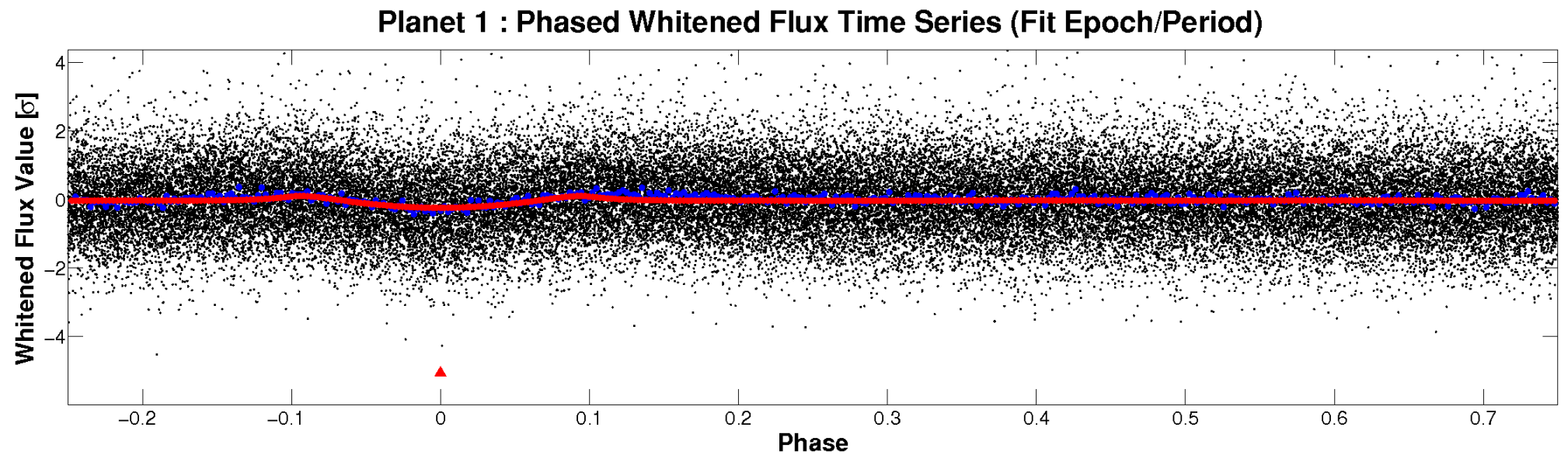
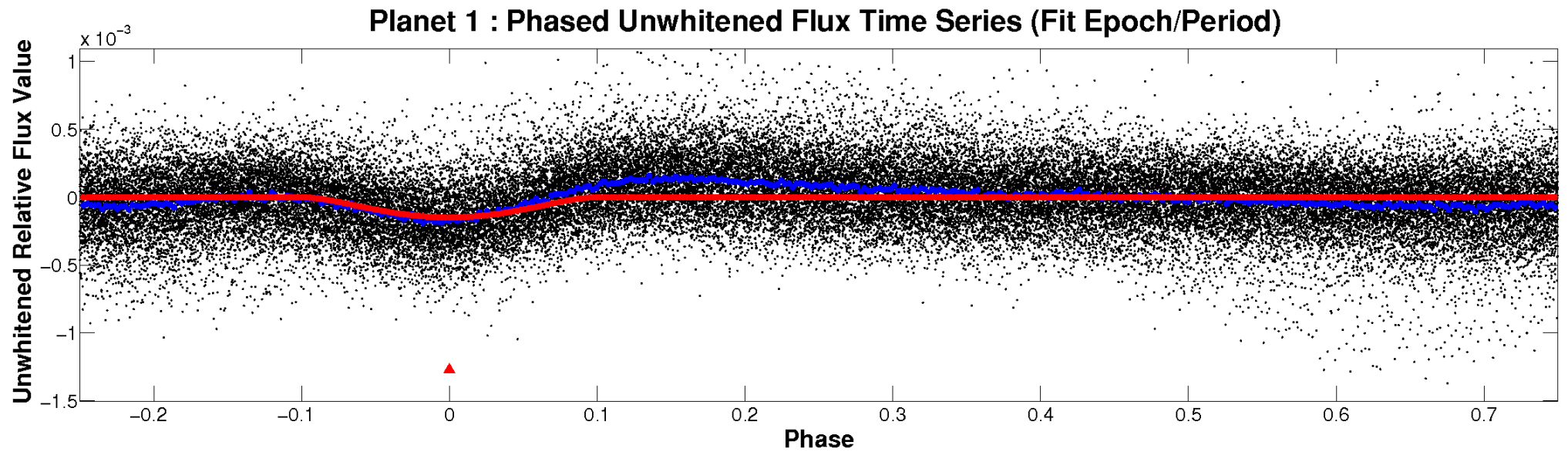


ALT Odd/Even

TCE 011338940-01

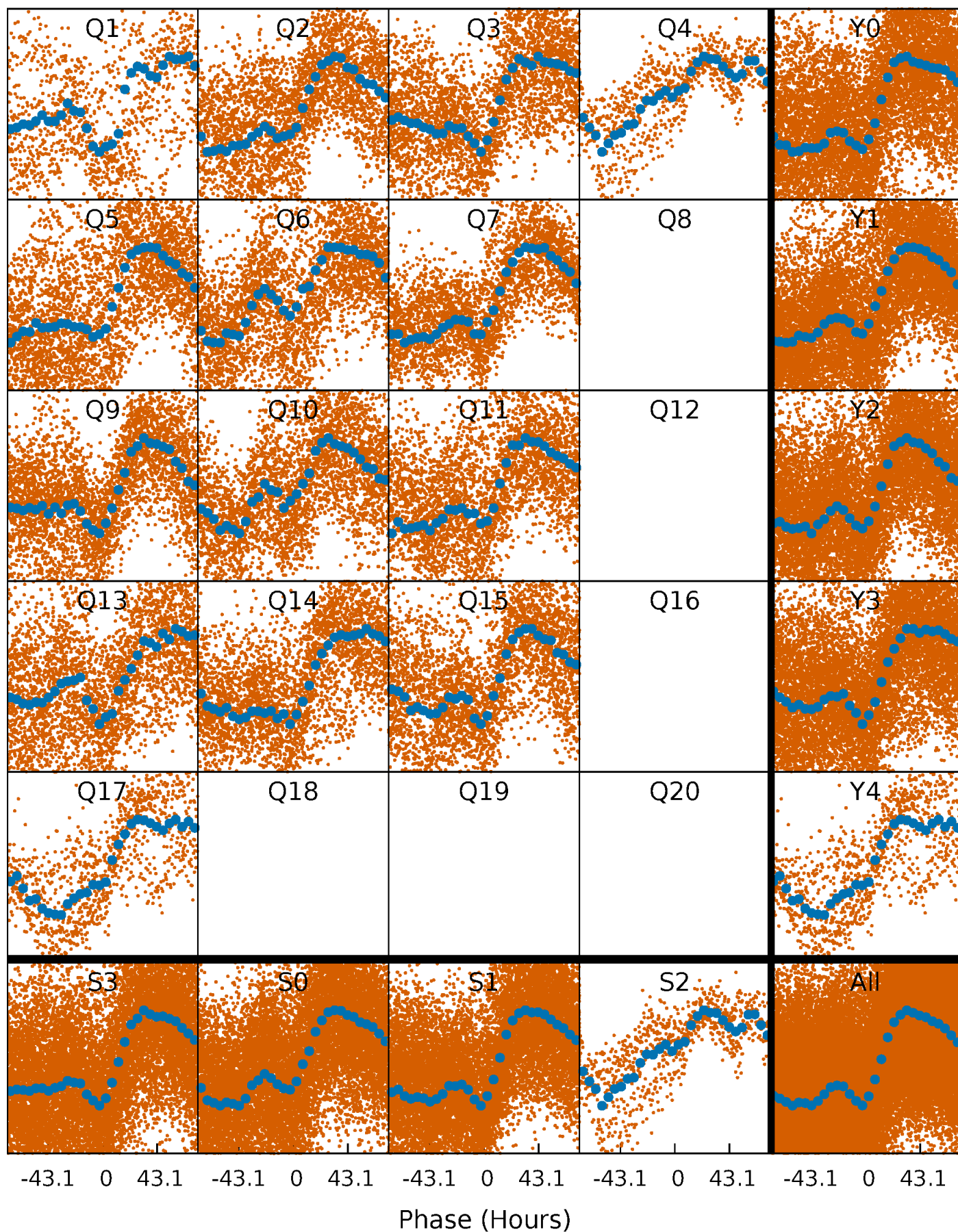


Non-Whitened Vs. Whitened Light Curve



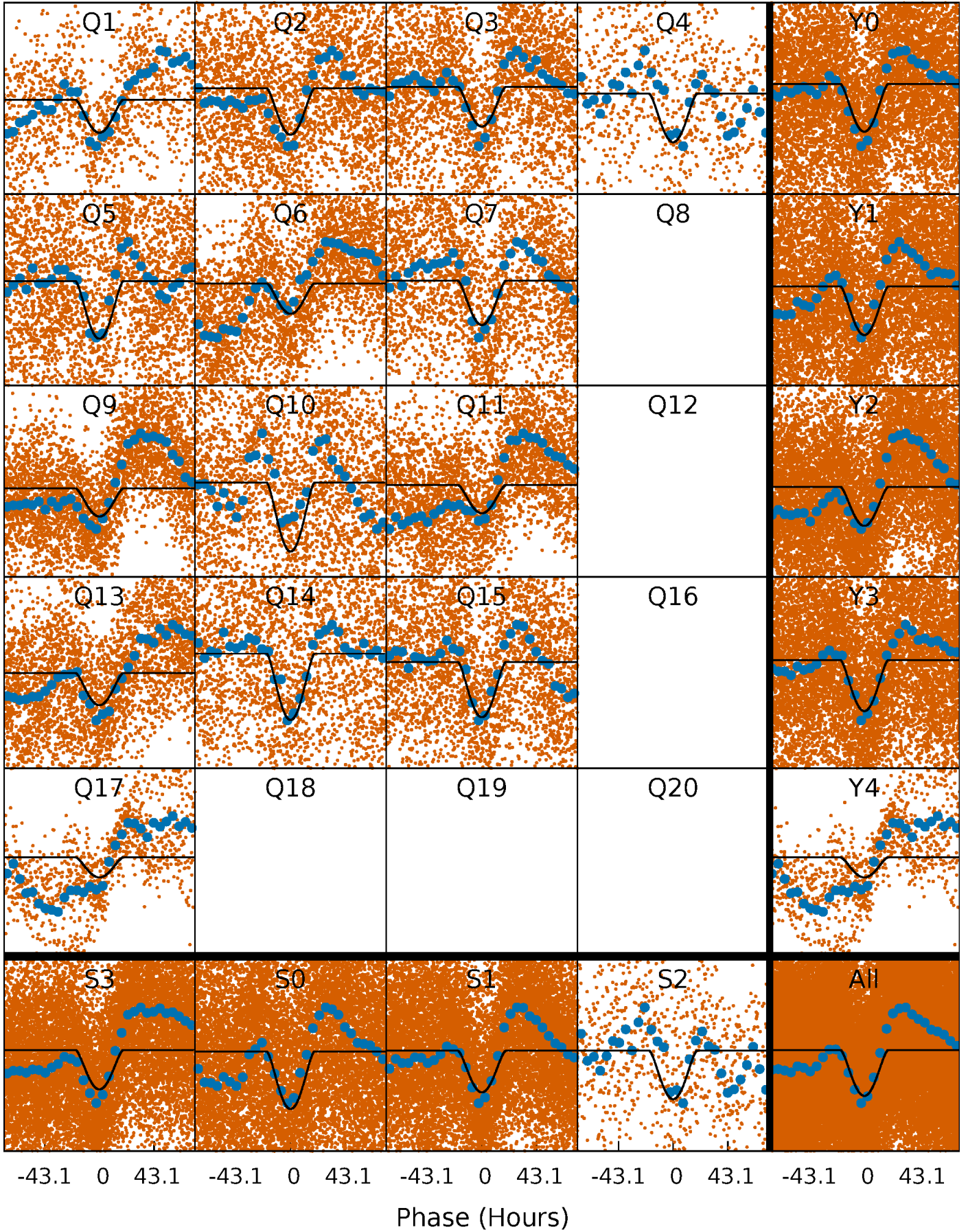
PDC Quarter-Phased Transit Curves

TCE 011338940-01 P= 8.006126 Days $T_0=138.813005$ (BKJD)



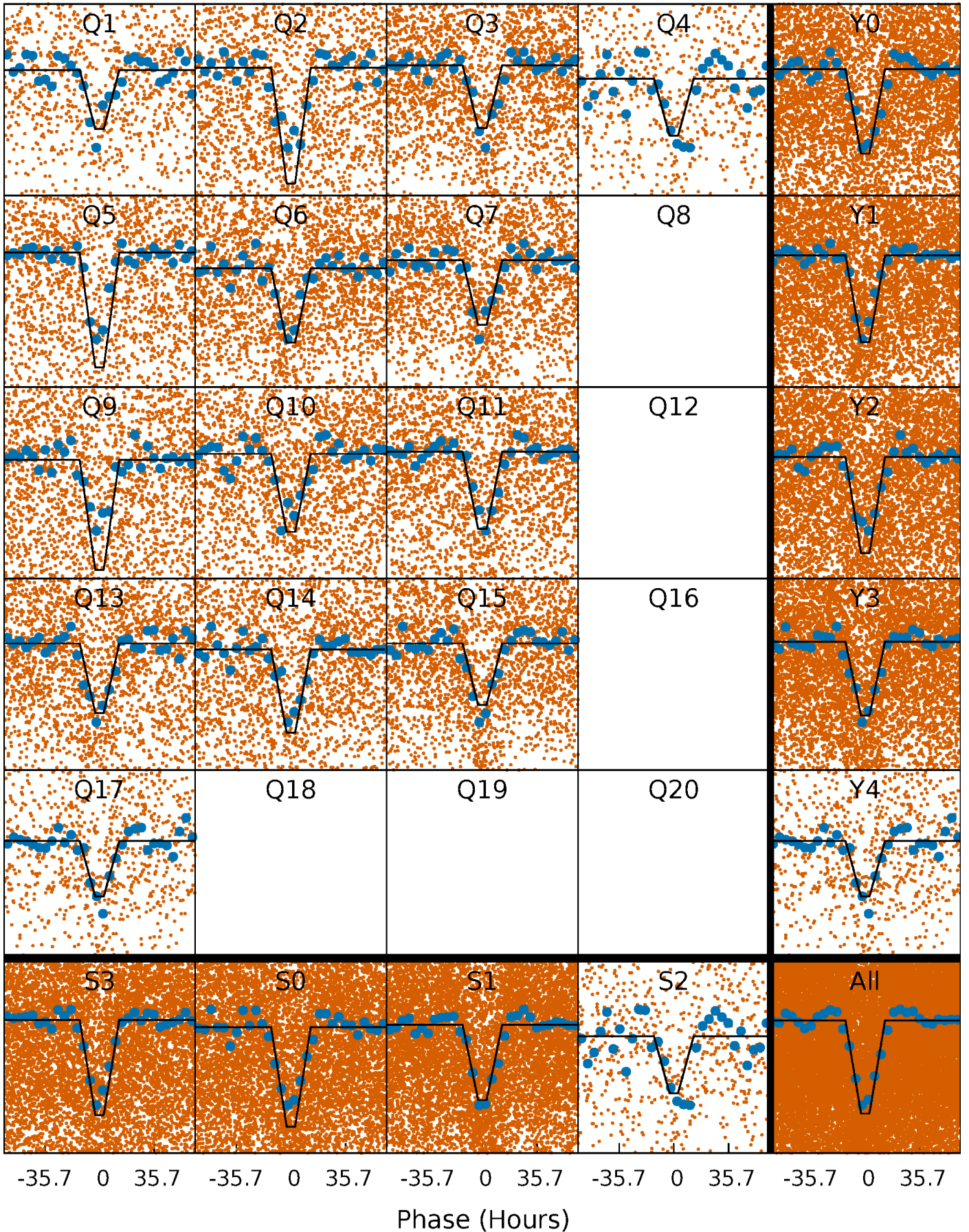
DV Quarter-Phased Transit Curves

TCE 011338940-01 P= 8.006126 Days $T_0=138.813005$ (BKJD)



Alt. Detrend Quarter-Phased Transit Curves

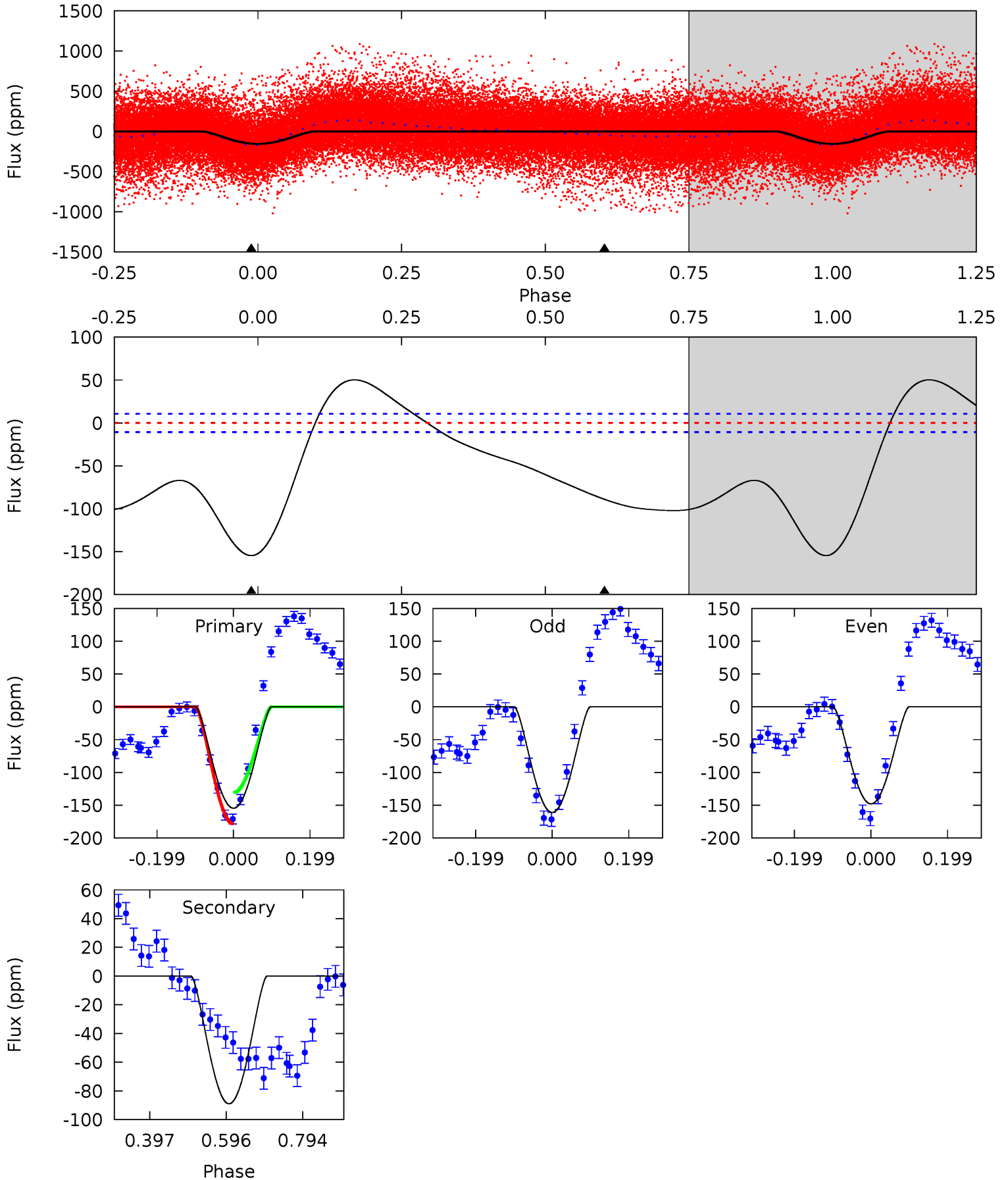
TCE 011338940-01 P= 8.006929 Days $T_0=138.693260$ (BKJD)



DV Model-Shift Uniqueness Test

011338940-01, P = 8.006126 Days, E = 130.806879 Days

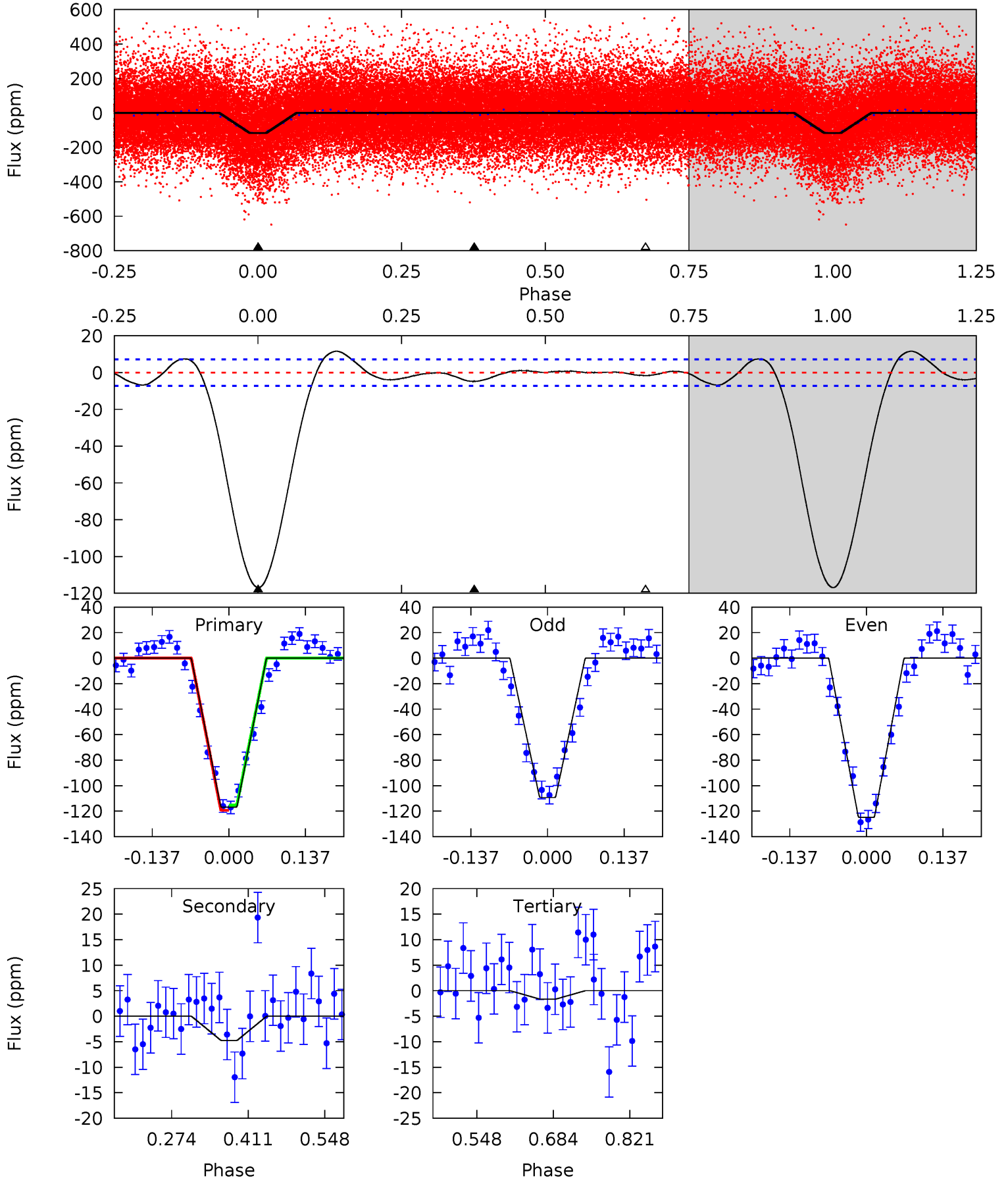
Pri	Sec	Ter	Pos	FA ₁	FA ₂	F _{Red}	Pri-Ter	Pri-Pos	Sec-Ter	Sec-Pos	Odd-Evn	DMM	Shape	TAT
64.4	37.1	0	0	4.42	1.29	10.8	64.4	64.4	37.1	37.1	2.73	1.05	0.25	9.55



Alt Model-Shift Uniqueness Test

011338940-01, P = 8.006929 Days, E = 130.686331 Days

Pri	Sec	Ter	Pos	FA ₁	FA ₂	F _{Red}	Pri-Ter	Pri-Pos	Sec-Ter	Sec-Pos	Odd-Evn	DMM	Shape	TAT
73.0	2.97	1.03	0	4.50	1.49	2.30	72.0	73.0	1.94	2.97	4.87	1.01	0.09	1.25



Stellar Parameters For KIC 011338940

	$T_{\text{eff}}(K)$	$\log(g)$	[Fe/H]	$R (R_{\odot})$	$M(M_{\odot})$	$p_{\star} (\text{g}\cdot\text{cm}^{-3})$
	6158^{+190}_{-253}	$3.995^{+0.343}_{-0.147}$	$0.120^{+0.200}_{-0.300}$	$1.875^{+0.538}_{-0.658}$	$1.267^{+0.193}_{-0.235}$	$0.271^{+0.664}_{-0.110}$
	+3%/-4%	+9%/-4%	+167%/-250%	+29%/-35%	+15%/-19%	+245%/-41%
Source	PHO54	PHO54	PHO54	DSEP		

KIC = Kepler Input Catalog; PHO = Photometry; SPE = Spectroscopy; AST = Asteroseismology
 TRA = Transits; DESP = Dartmouth Models; MULT = Multiple Models

Secondary Eclipse Parameters for KIC 011338940-01 / KOI

Detrend	Depth (ppm)	$R_p (R_{\oplus})$	$T_{max} (K)$	$T_{obs} (K)$	A_{obs}
DV	-89 ± 2	$4.36^{+3.33}_{-2.43}$	1744^{+146}_{-177}	4152^{+1684}_{-681}	18^{+72}_{-12}
Alt.	-5 ± 2	$2.99^{+2.68}_{-1.98}$	1737^{+144}_{-170}	2887^{+1183}_{-614}	$1.999^{+15.783}_{-1.477}$

T_{max} = Theoretical Maximum Planetary Temperature
 T_{obs} = Observed Planetary Temperature (Assuming A=0.3)
 A_{obs} = Observed Albedo (Assuming T=0)

If a secondary eclipse is present, the system is likely an EB if $T_{obs} \gg T_{max}$ AND $A_{obs} \gg 1.0$

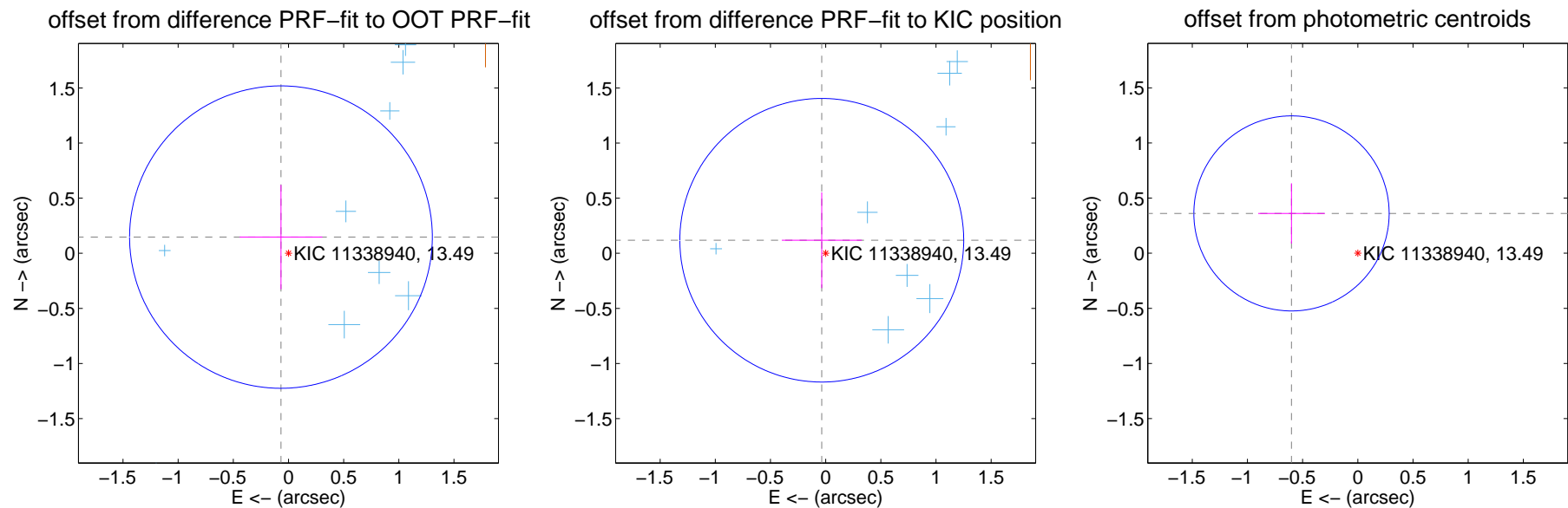
DV Centroid Data

Supplemental centroid analysis for 011338940-01. Kepler magnitude: 13.49. Transit SNR 15.99

There are 10 quarters with good PRF difference image offsets

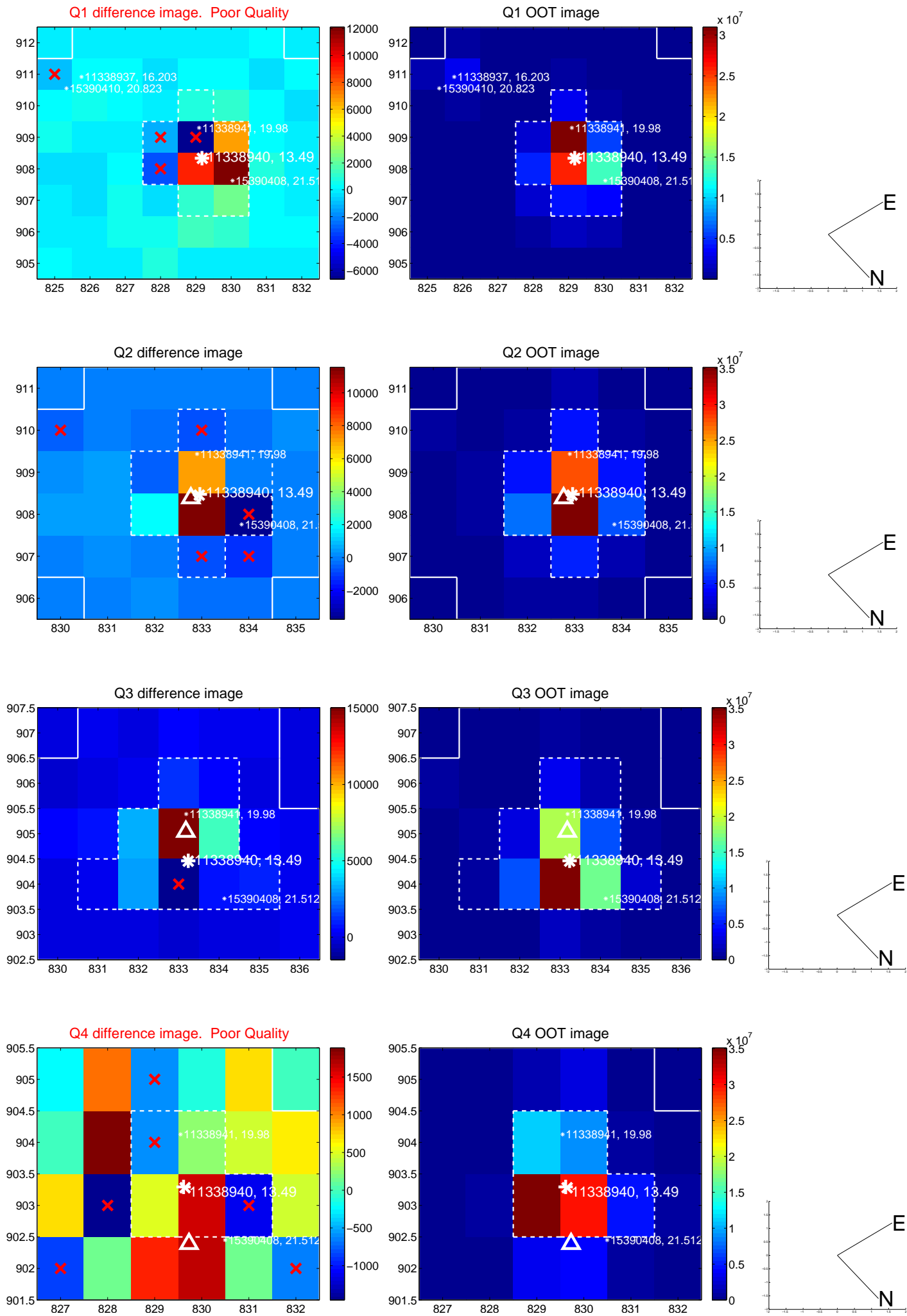
The direct PRF centroid is offset from the target star catalog position by about 0.22 arcsec

	Distance in arcsec	Distance / σ	Δ RA	Δ Dec
PRF-fit source offset from OOT	0.162 ± 0.457	0.35	0.068 ± 0.375	0.147 ± 0.473
PRF-fit source offset from KIC position	0.123 ± 0.429	0.29	0.035 ± 0.363	0.118 ± 0.434
photometric centroid source offset	0.70 ± 0.29	2.38	0.60 ± 0.30	0.36 ± 0.27

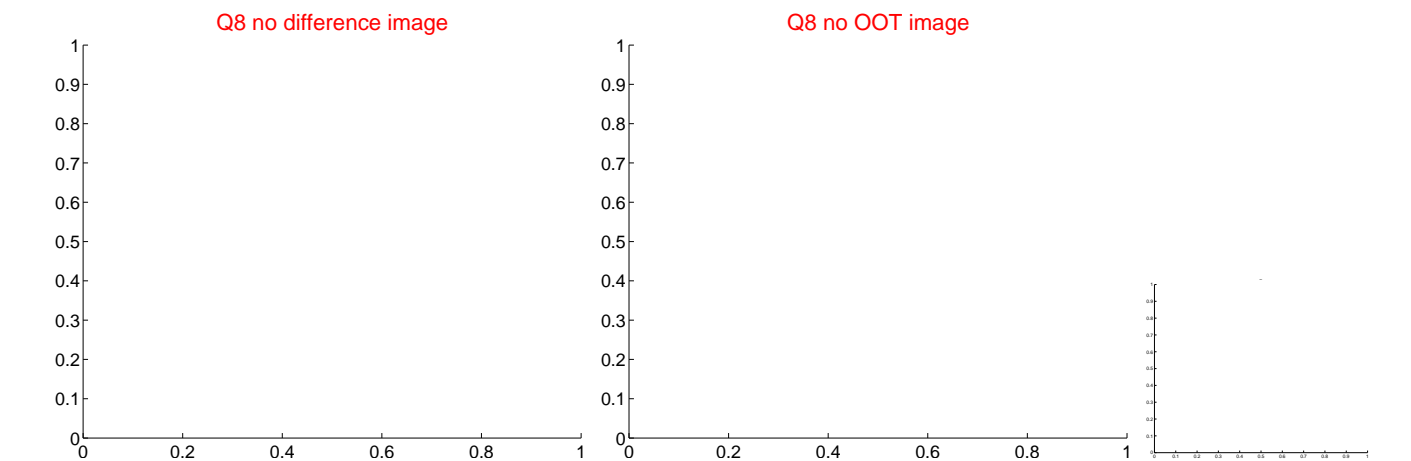
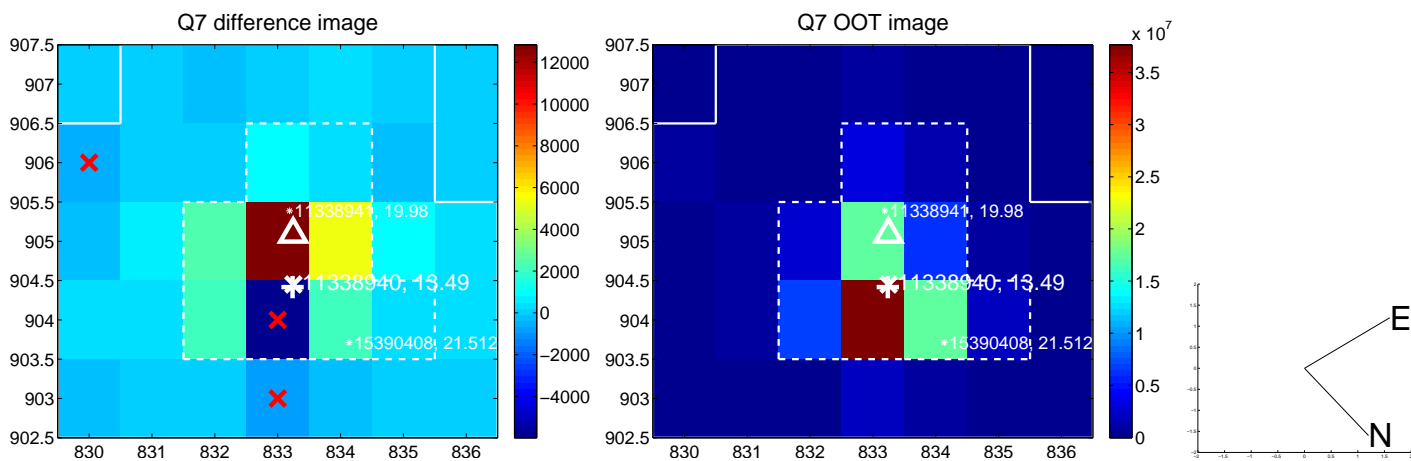
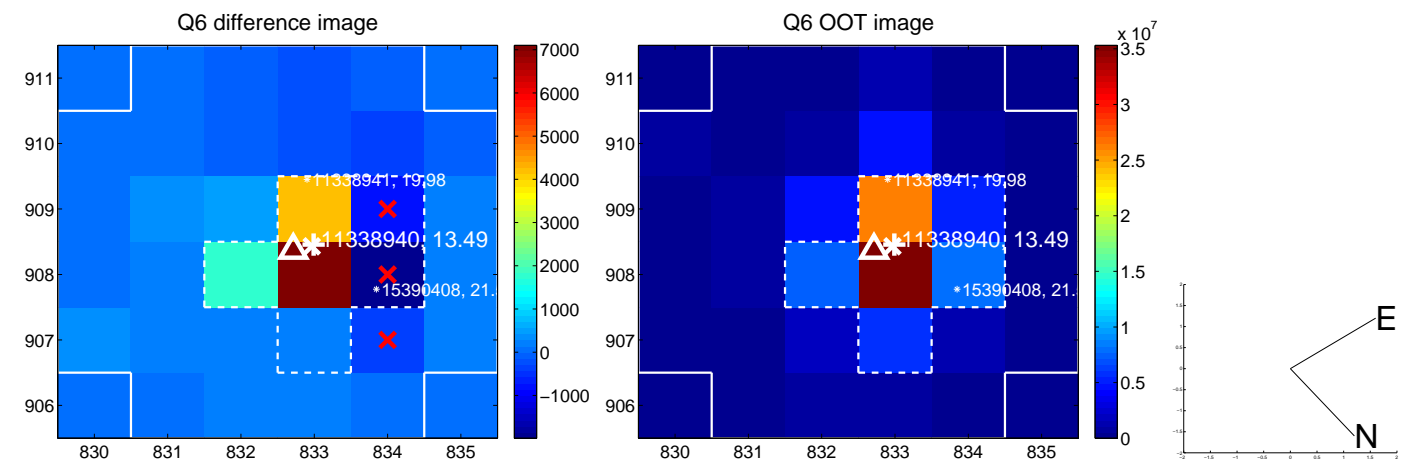
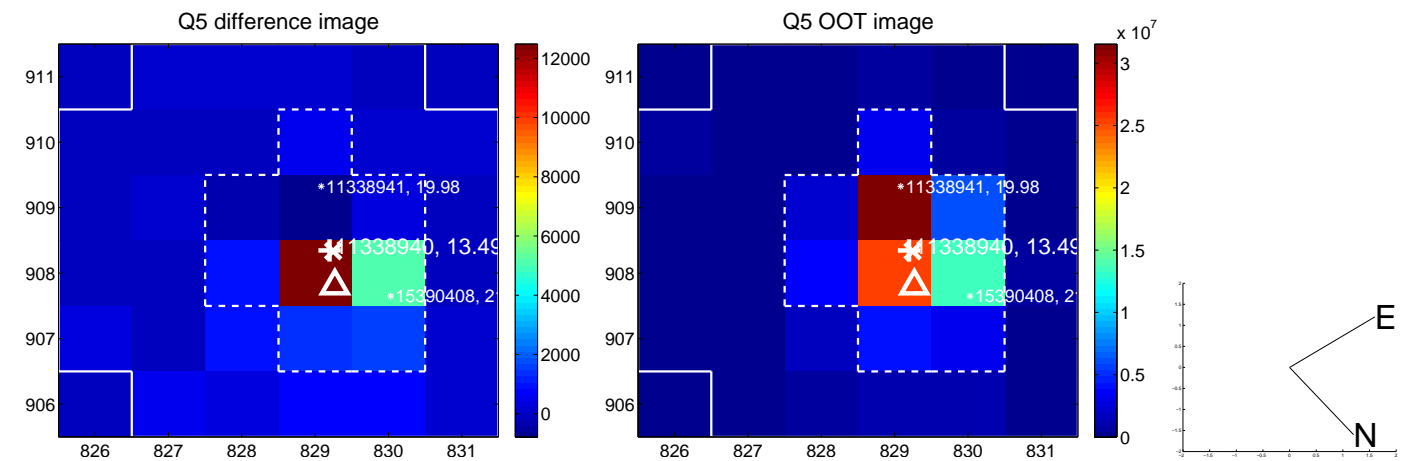


Centroid source offsets from the target star reconstructed from PRF and photometric centroids. **Sky blue crosses:** good quarterly centroid offsets; **Vermillion crosses:** bad quarterly centroid offsets; magenta cross: average over quarters. Length of the crosses: one- σ uncertainty. Blue circle: three- σ . Red *: target star. Blue *: Other stars. Text next to a star gives its KIC ID and kepmag. KIC IDs > 15,000,000 are from the UKIRT catalog.

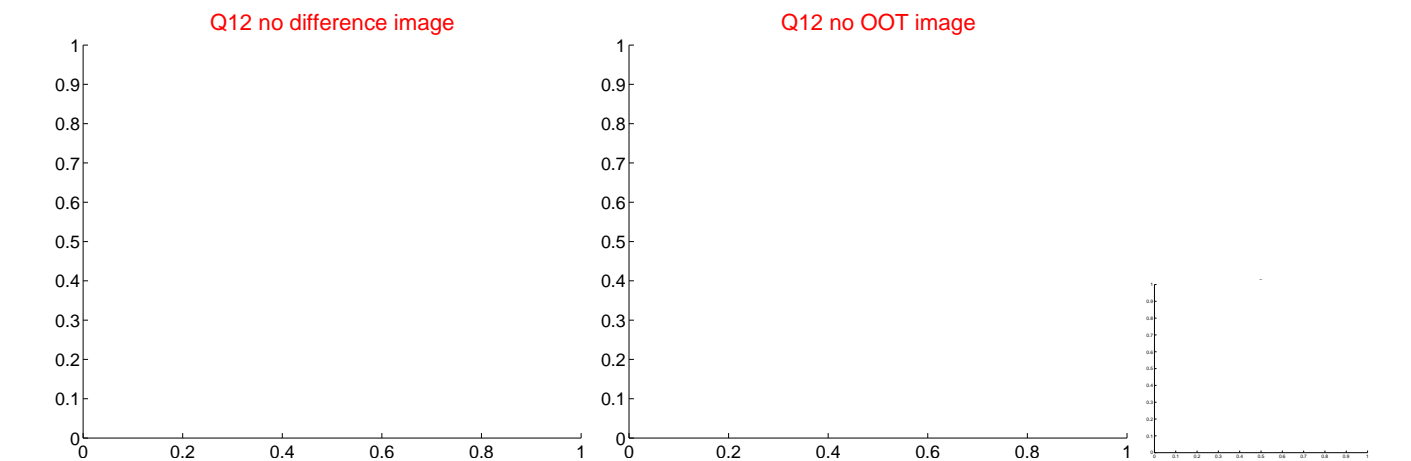
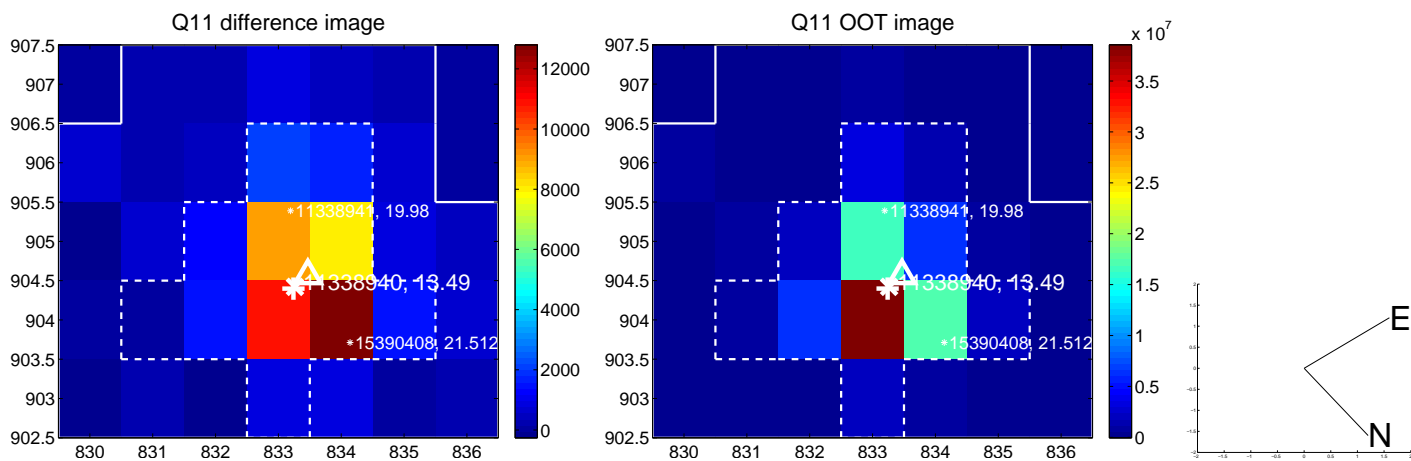
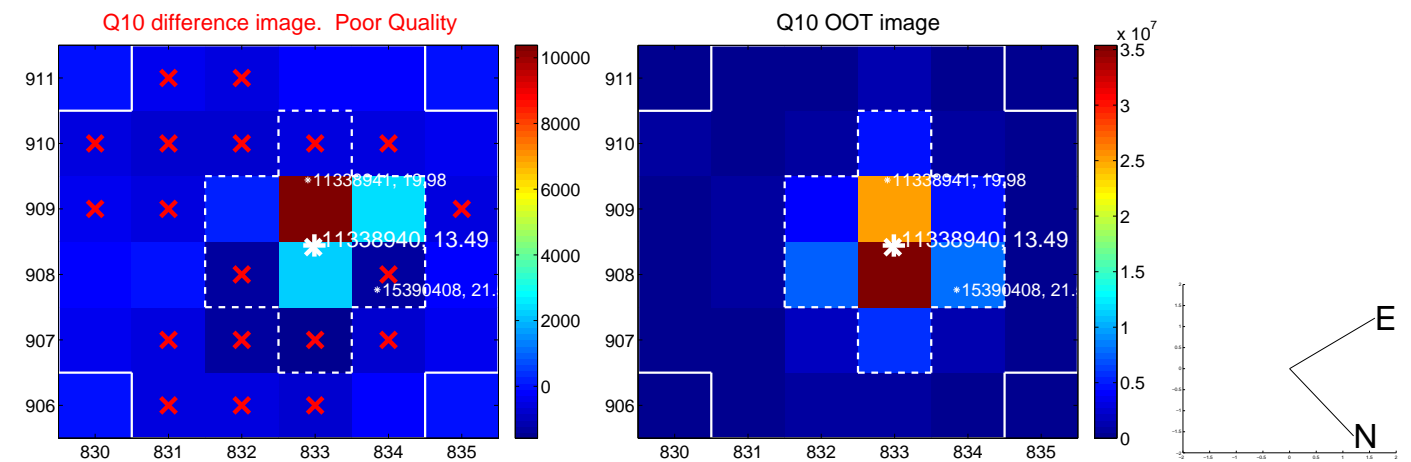
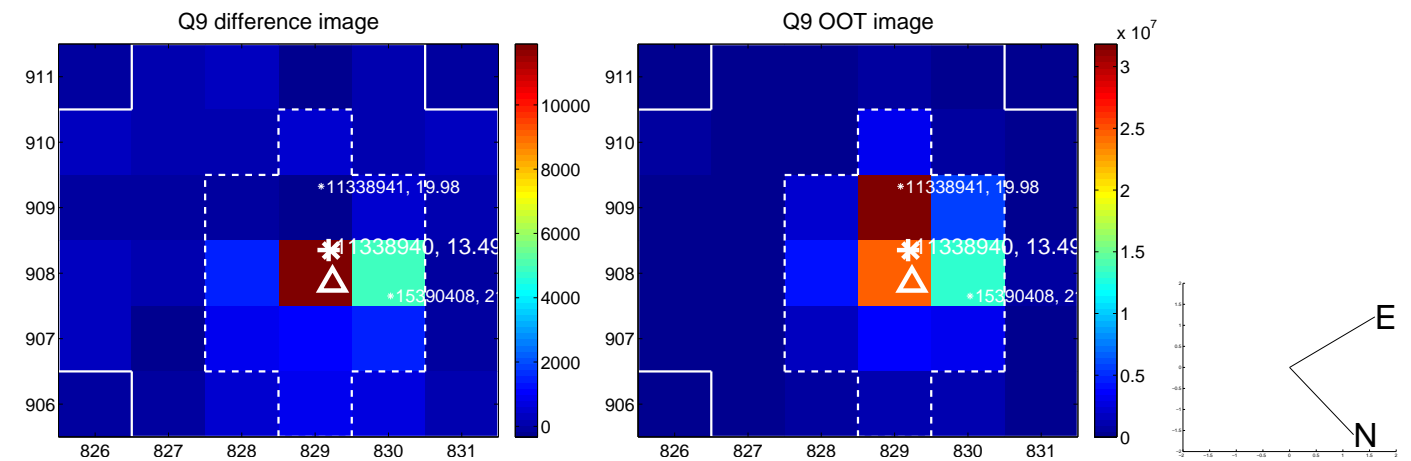
white \times : KIC target position; +: OOT centroid; \triangle : difference centroid. red \times : large negative pixel value.



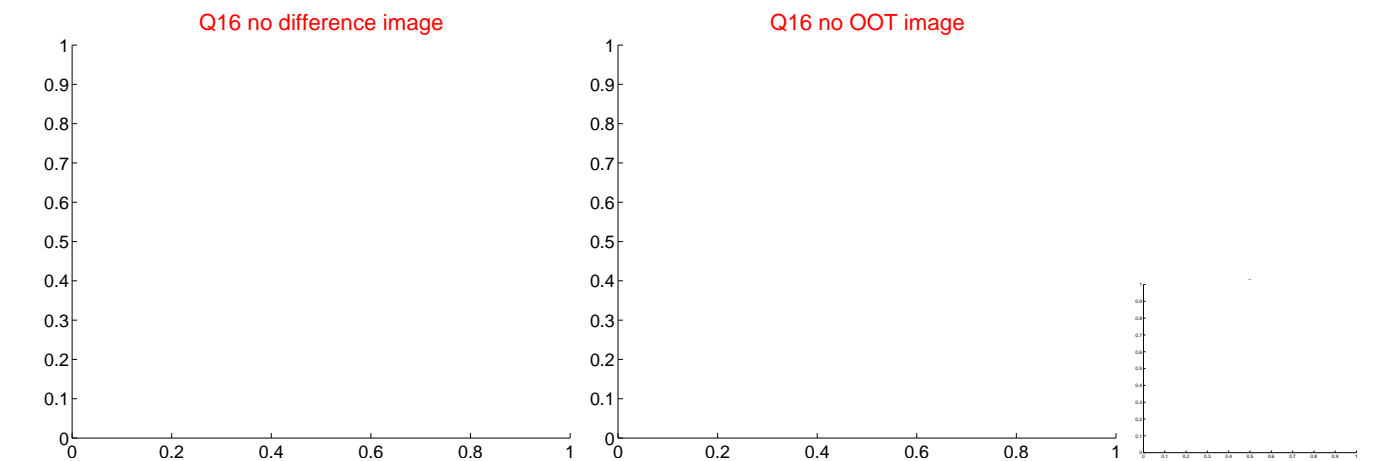
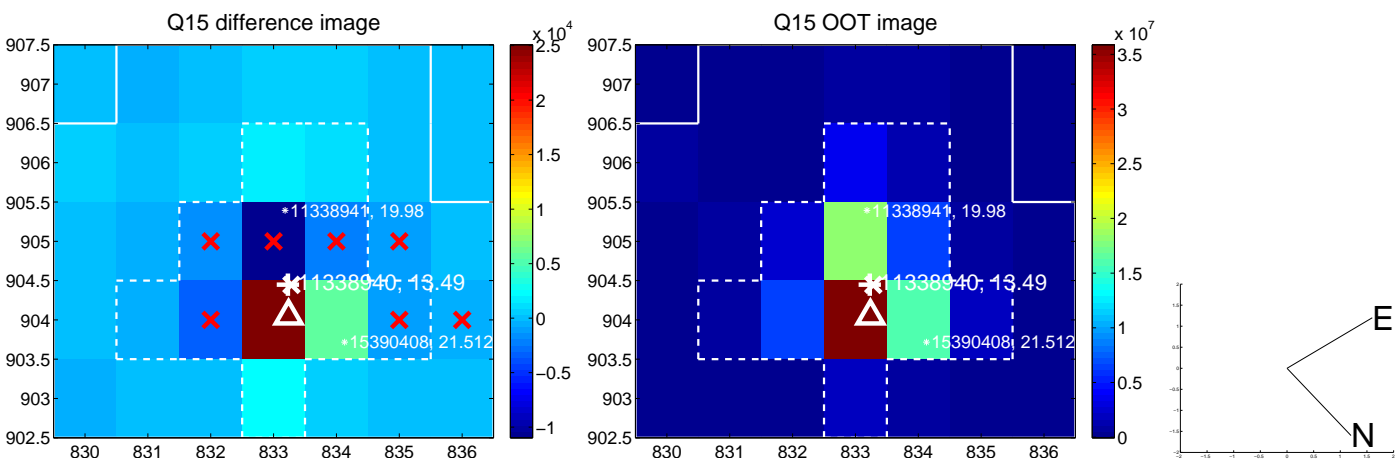
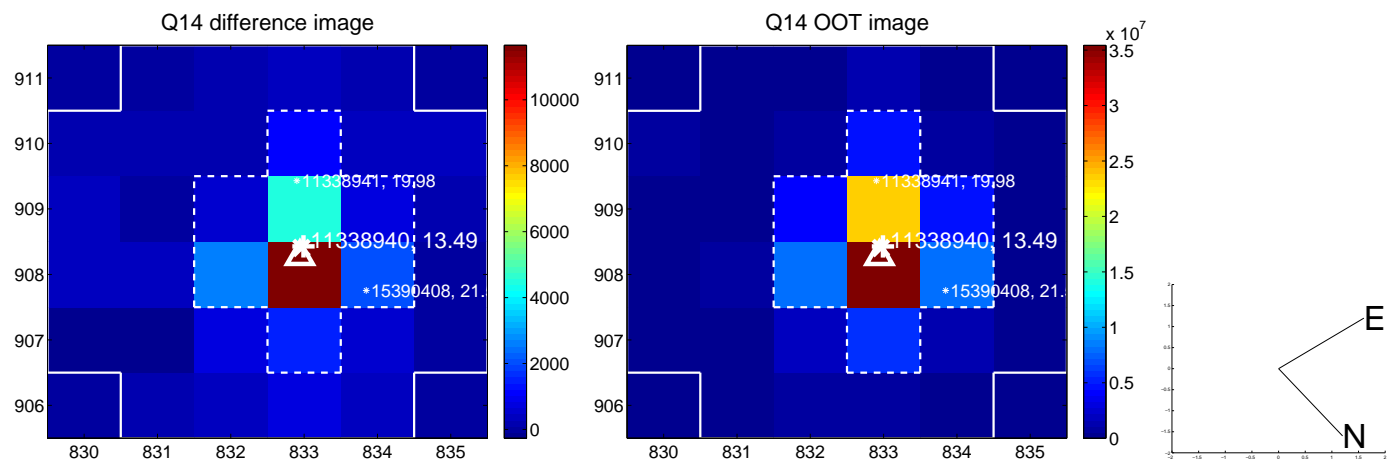
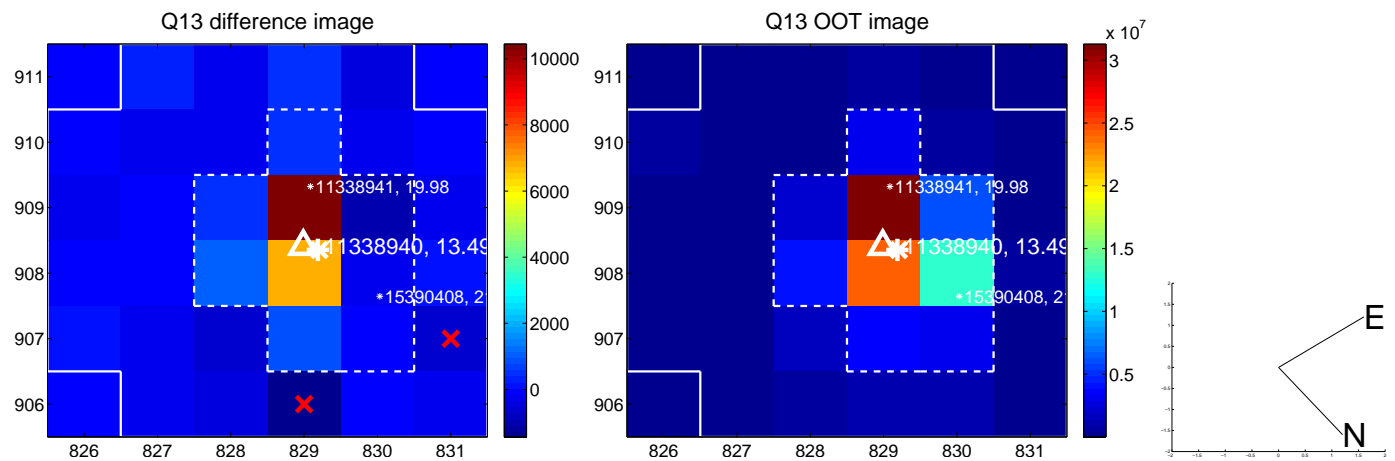
white \times : KIC target position; +: OOT centroid; \triangle : difference centroid. red \times : large negative pixel value.



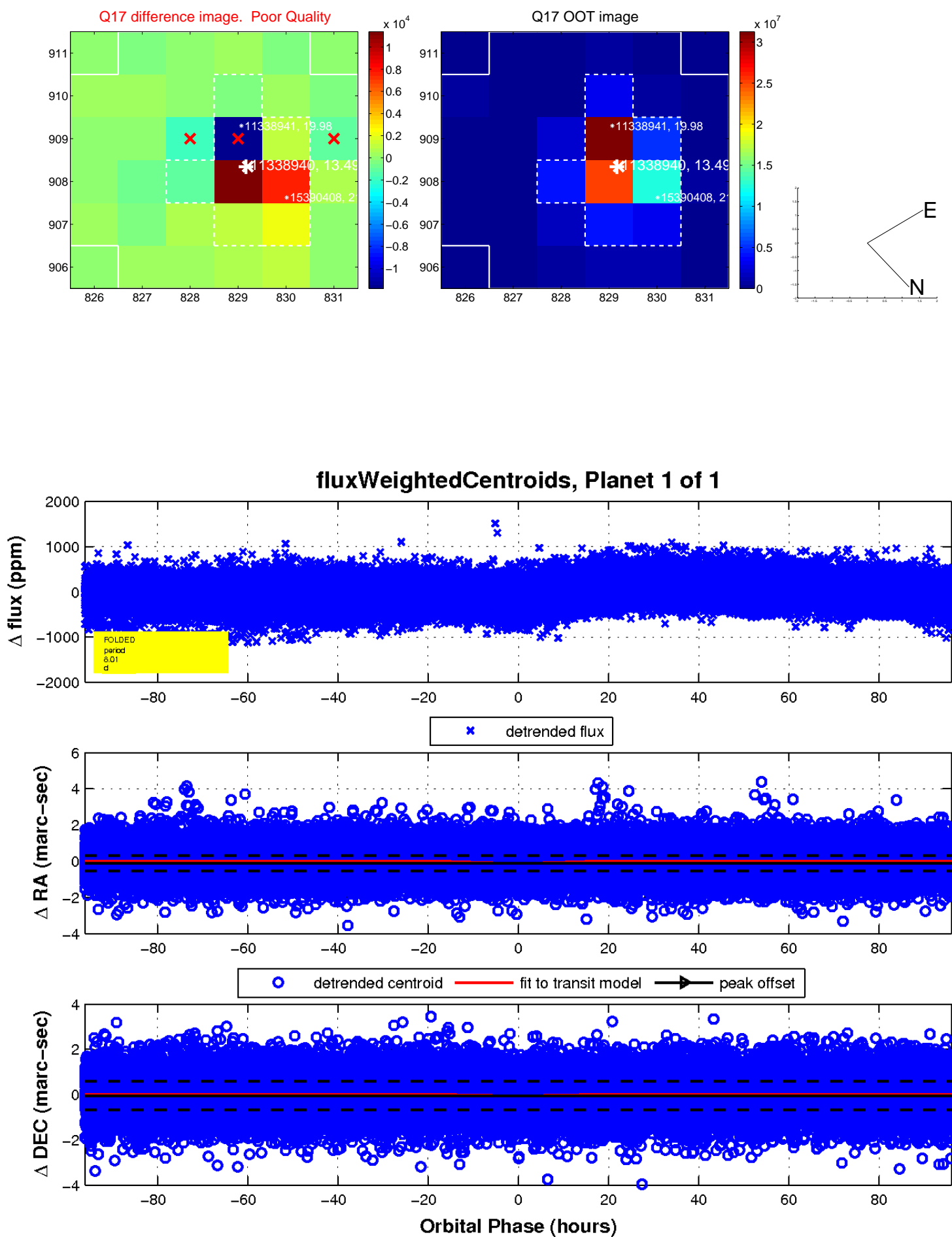
white \times : KIC target position; +: OOT centroid; \triangle : difference centroid. red \times : large negative pixel value.



white \times : KIC target position; +: OOT centroid; \triangle : difference centroid. red \times : large negative pixel value.



white \times : KIC target position; $+$: OOT centroid; \triangle : difference centroid. red \times : large negative pixel value.



UKIRT Image

Declination

