

KIC 011254601

Q1-17 DR25 TCE Parameters

TCE	Run Type	KOI?	Period (Days)	Epoch (BKJD)	Depth (ppm)	Duration (Hours)	MES	SNR	R_{\star} (R_{\odot})	T_{\star} (K)	R_p (R_{\oplus})	S_p (S_{\oplus})
011254601-01	OBS	No	432.281846	264.323618	142.9	3.431	8.9	7.8	3.03	8572	4.20	22.36

Robovetter Results

TCE	Run Type	Disp	Score	N	S	C	E	Comments
011254601-01	OBS	FP	0.00	1	0	0	0	INDIV_TRANS_CHASES_MARSHALL—INCONSISTENT_TRANS—CENT_FEW_DIFFS

Notes: OBS = Observed. INJ = Injected. INV = Inverted. SCR = Scrambled.

N = Not Transit-Like. S = Stellar Eclipse. C = Centroid Offset. E = Ephemeris Match.

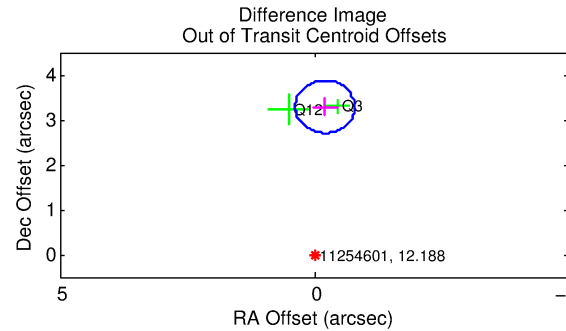
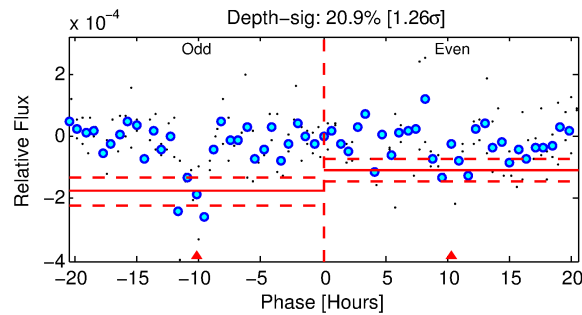
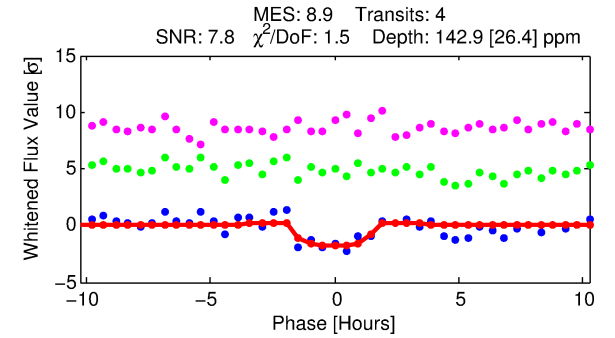
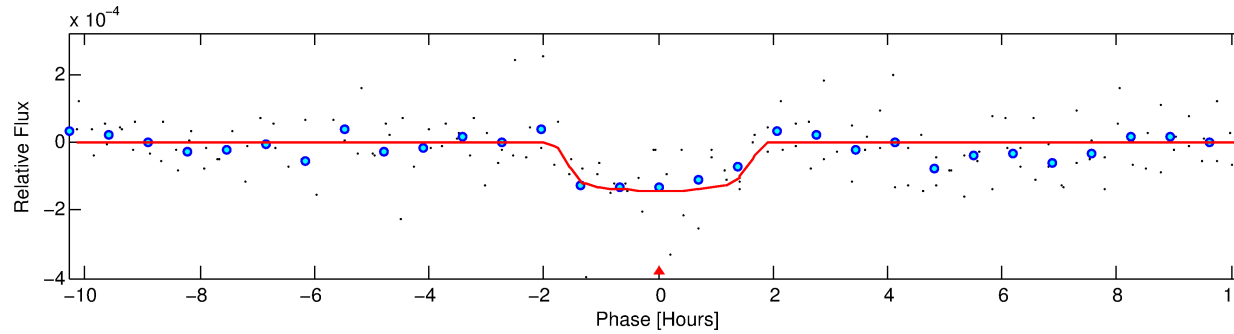
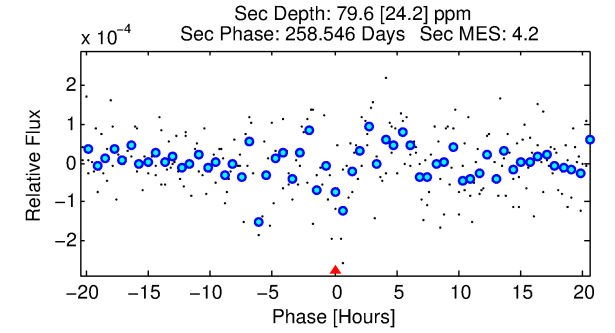
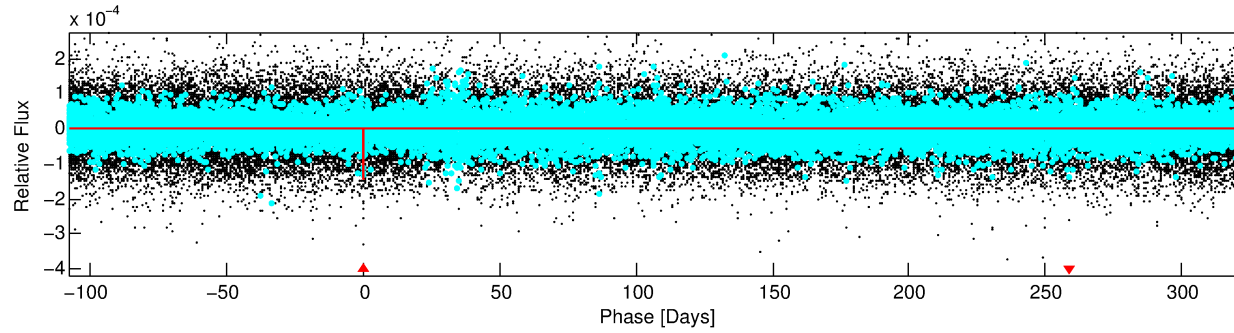
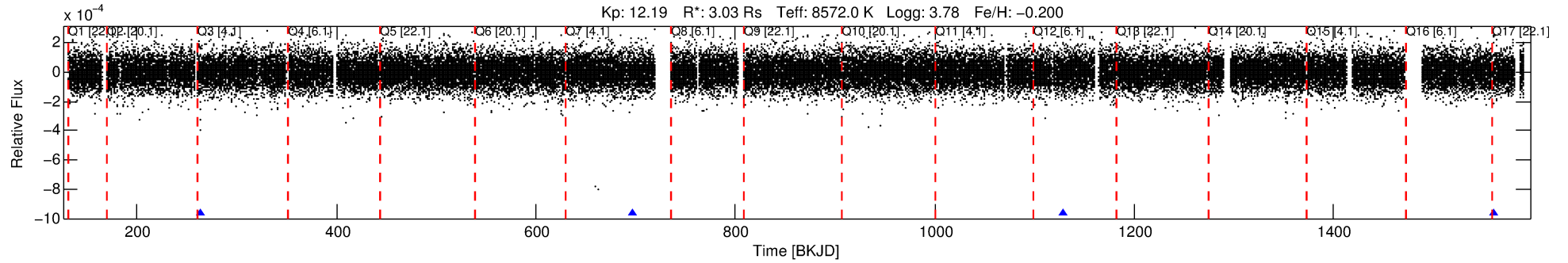
See http://exoplanetarchive.ipac.caltech.edu/docs/API_kepcandidate_columns.html#proj_disp_col for comment definitions.

Ephemeris Match Information For 011254601-01

No Significant Match Found

DV One-Page Summary

KIC: 11254601 Candidate: 1 of 1 Period: 432.282 d



DV Fit Results:

Period = 432.28185 [0.00588] d
Epoch = 264.3236 [0.0109] BKJD
Rp/R* = 0.0127 [0.0110]
a/R* = 447.71 [2590.67]
b = 0.90 [1.24]
Seff = 22.36 [16.32]
Teq = 555 [101] K
Rp = 4.20 [4.15] Re
a = 1.4111 [0.6345] AU
Ag = 4935.52 [9340.24] [0.53σ]
Teffp = 7186 [3168] K [2.09σ]

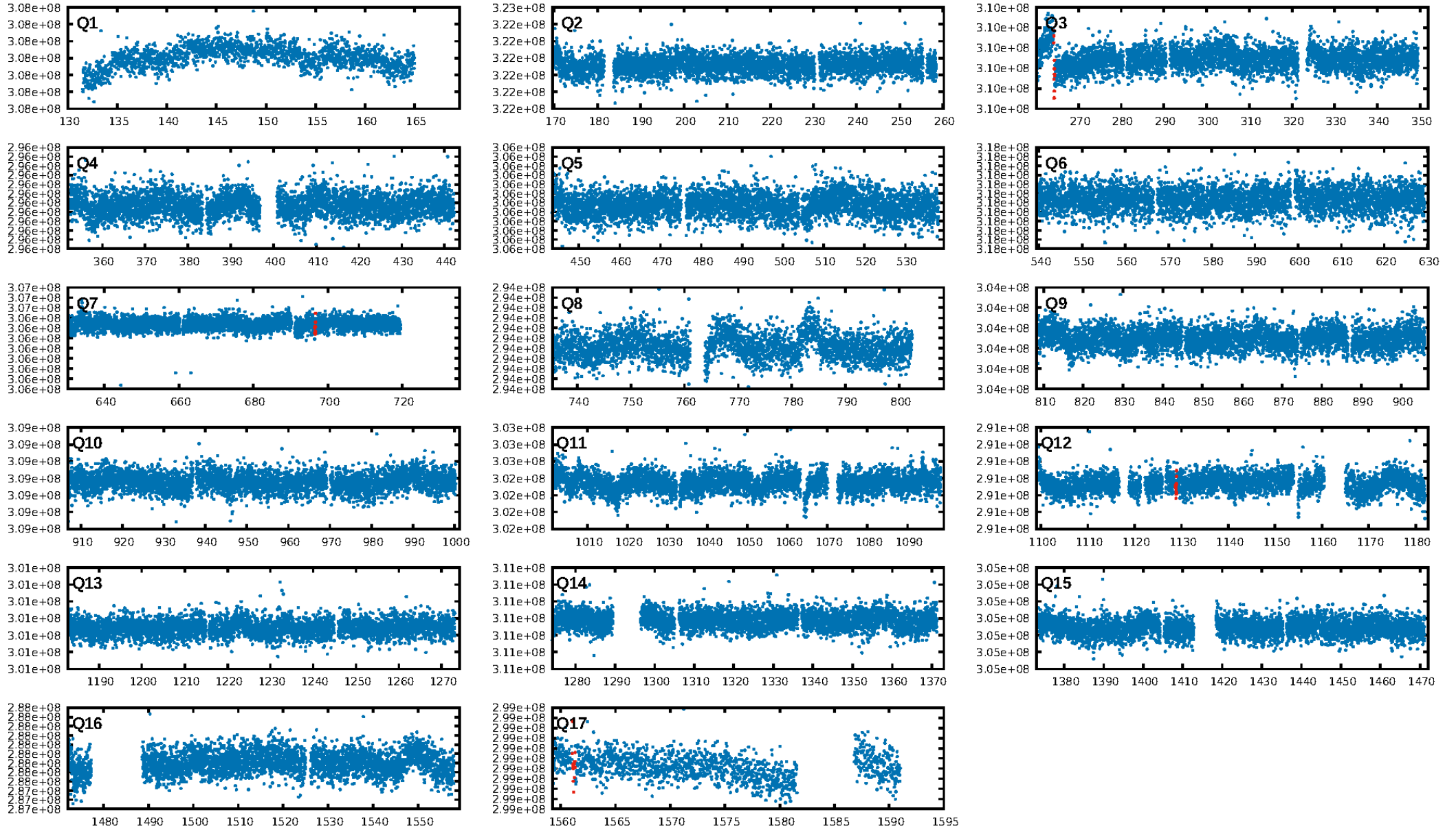
DV Diagnostic Results:

ShortPeriod-sig: N/A
LongPeriod-sig: N/A
ModelChiSquare2-sig: 9.6%
ModelChiSquareGof-sig: 90.2%
Bootstrap-pfa: 3.05e-16
RollingBand-fgt: 1.00 [3/3]
GhostDiagnostic-chr: 1.575
Centroid-sig: 19.9%
Centroid-so: 2.166 arcsec [1.33σ]
OotOffset-rm: 3.295 arcsec [16.92σ]
KicOffset-rm: 3.379 arcsec [17.33σ]
OotOffset-st: 0/1/1/0 [2]
KicOffset-st: 0/1/1/0 [2]
DiffImageQuality-fgm: 0.50 [1/2]
DiffImageOverlap-fno: 1.00 [3/3]

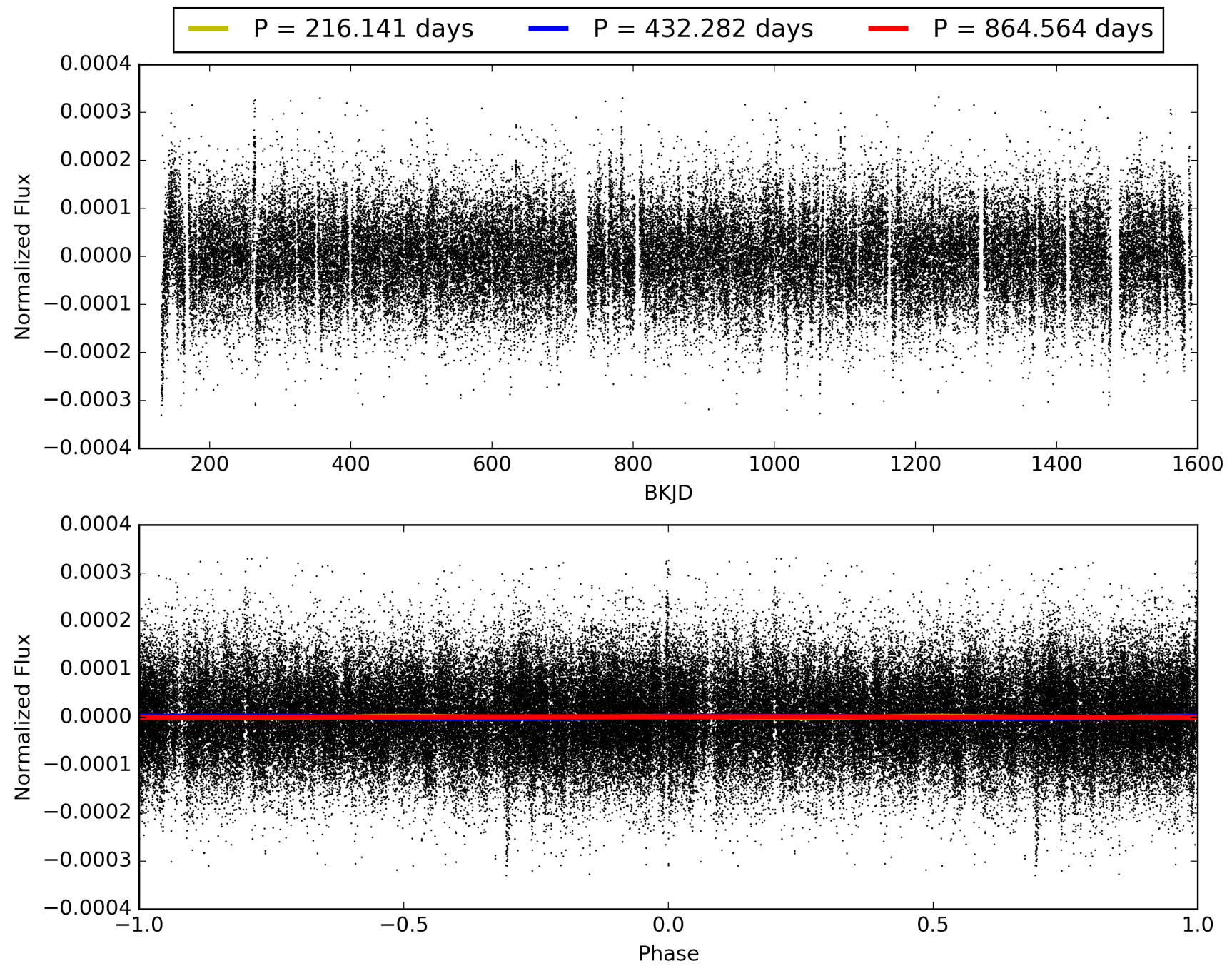
Software Revision: svn-ssh://murzim/repo/soc/tags/release/9.3.42@60958 -- Date Generated: 28-Jan-2016 19:08:10 Z

This Data Validation Report Summary was produced in the Kepler Science Operations Center Pipeline at NASA Ames Research Center

TCE 011254601-01, PDC Light Curves

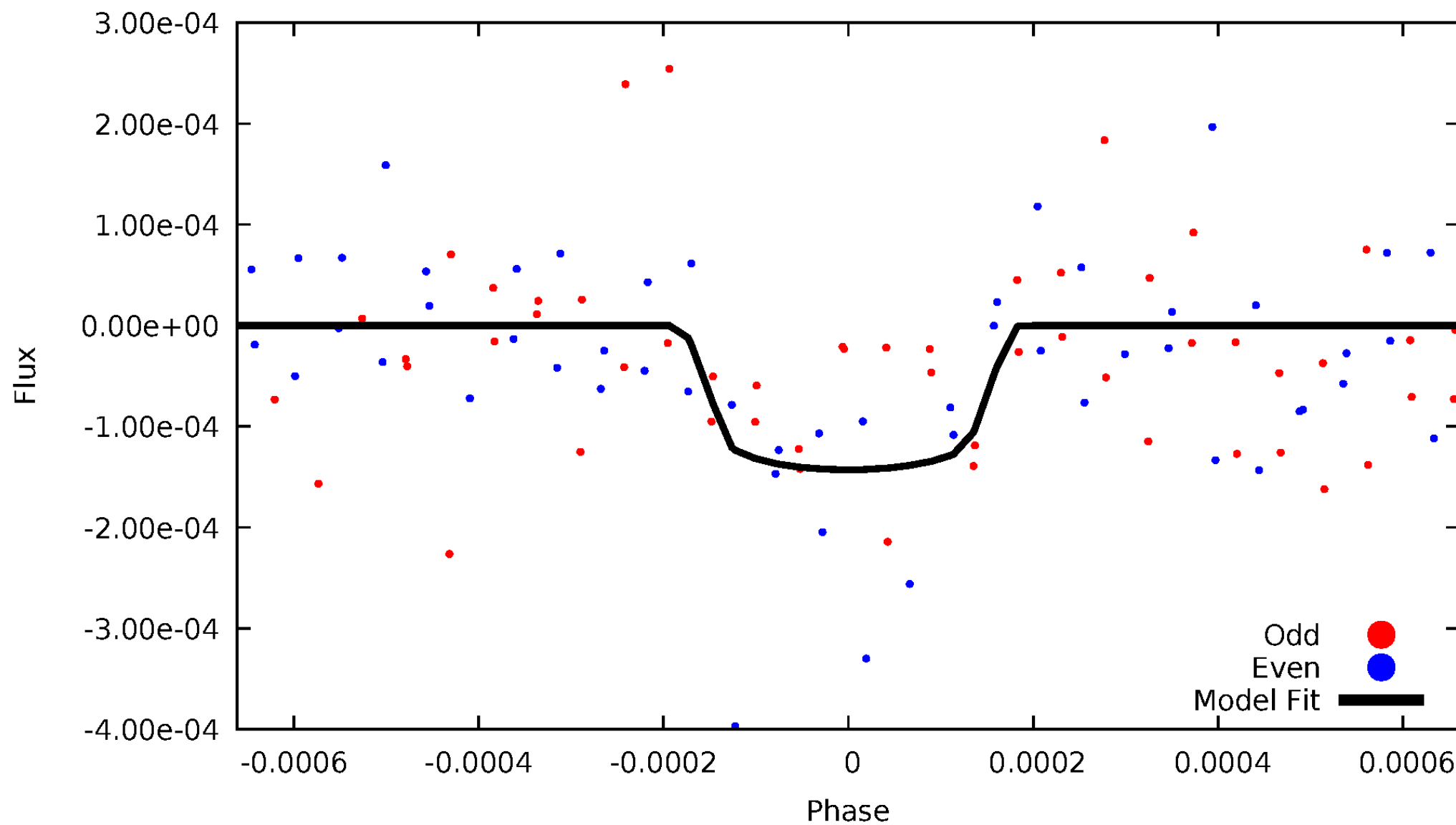


TCE 011254601-01



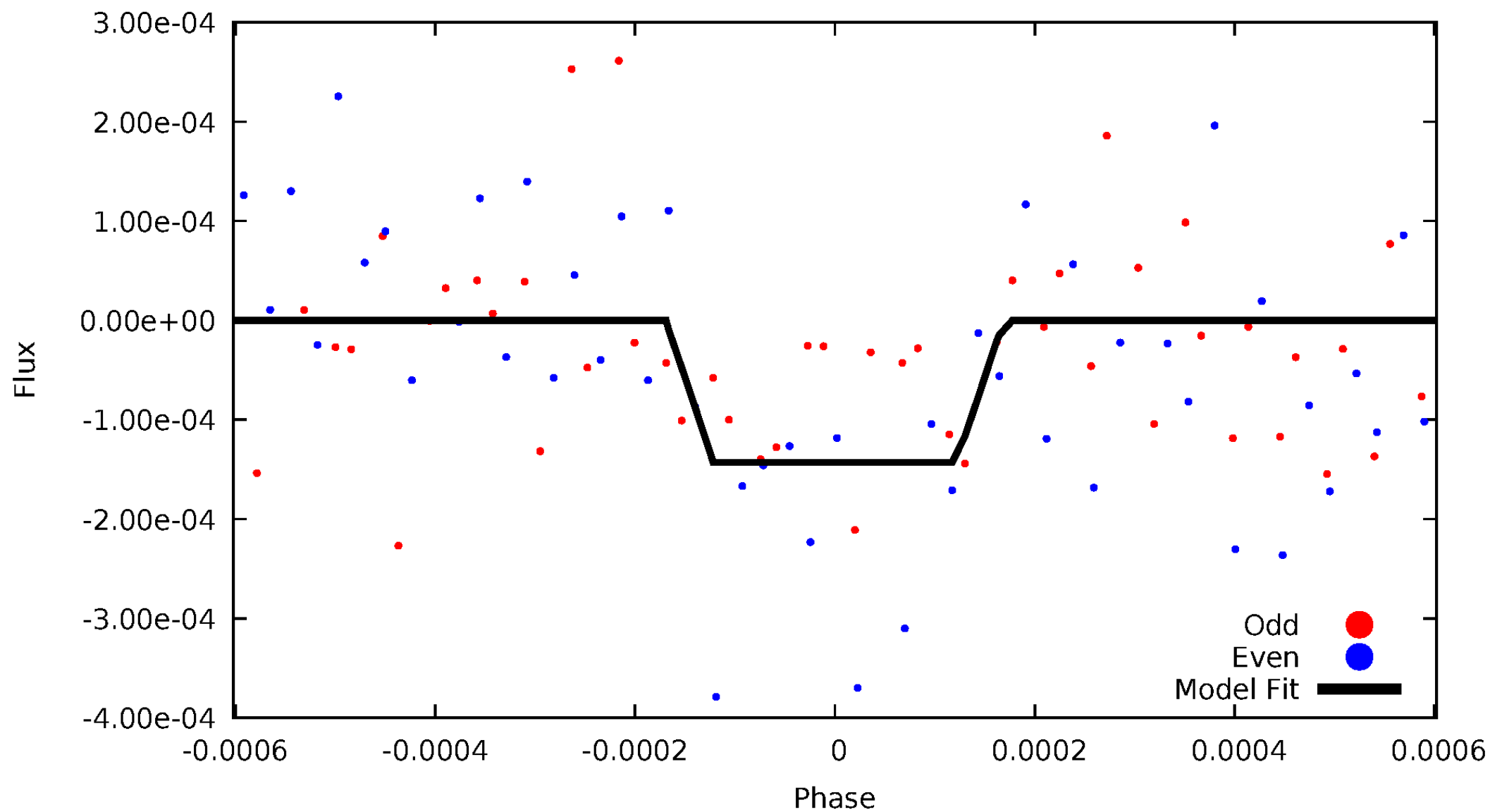
DV Odd/Even

TCE 011254601-01



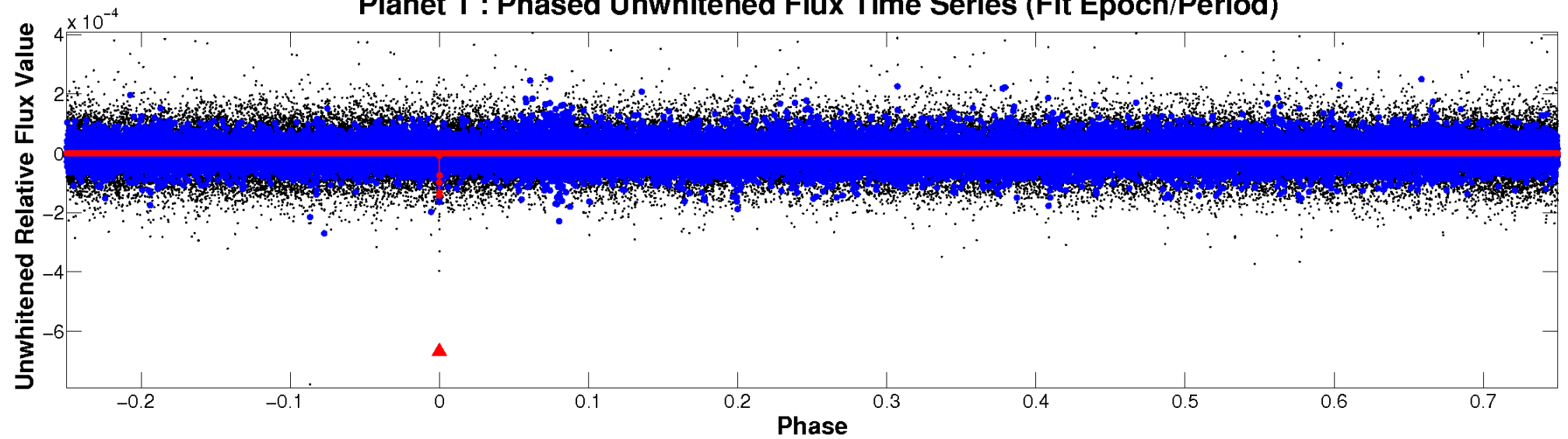
ALT Odd/Even

TCE 011254601-01

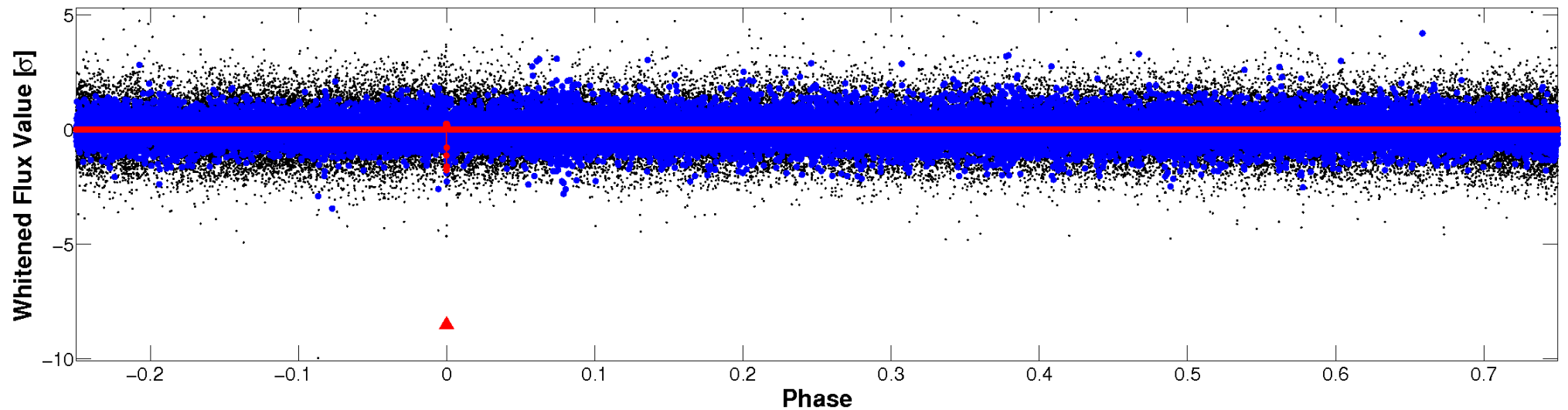


Non-Whitened Vs. Whitened Light Curve

Planet 1 : Phased Unwhitened Flux Time Series (Fit Epoch/Period)

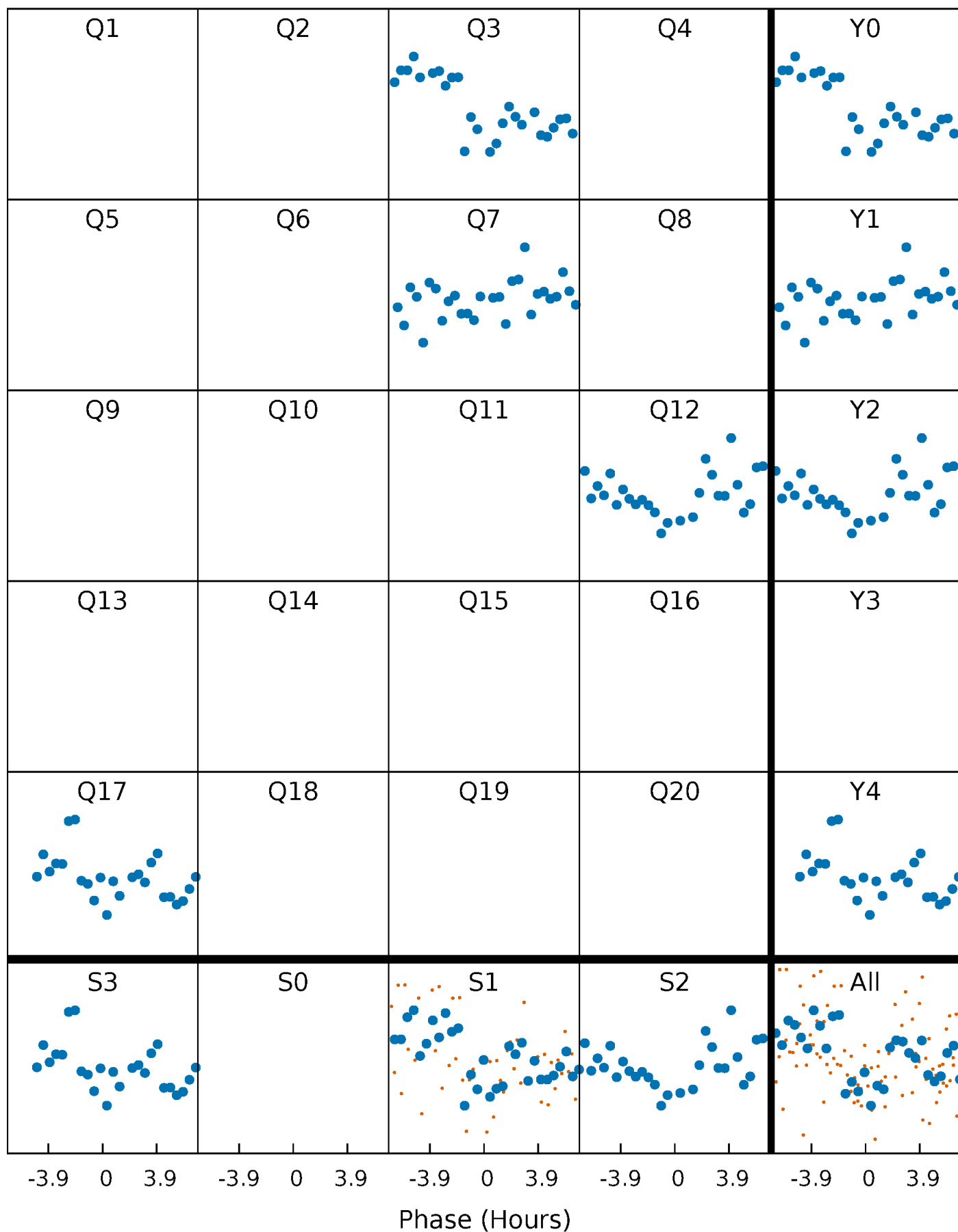


Planet 1 : Phased Whitened Flux Time Series (Fit Epoch/Period)



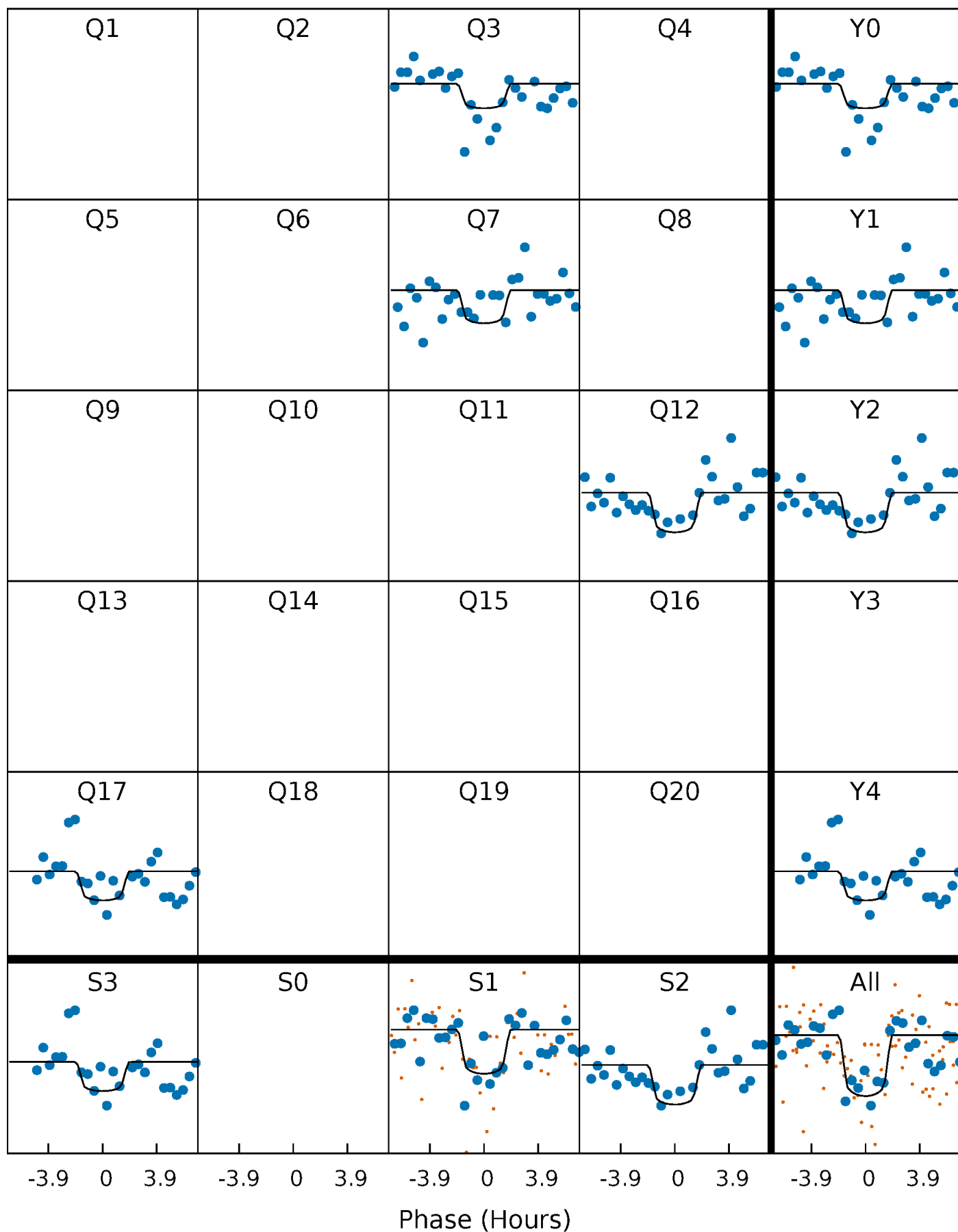
PDC Quarter-Phased Transit Curves

TCE 011254601-01 P=432.281846 Days $T_0=264.323618$ (BKJD)



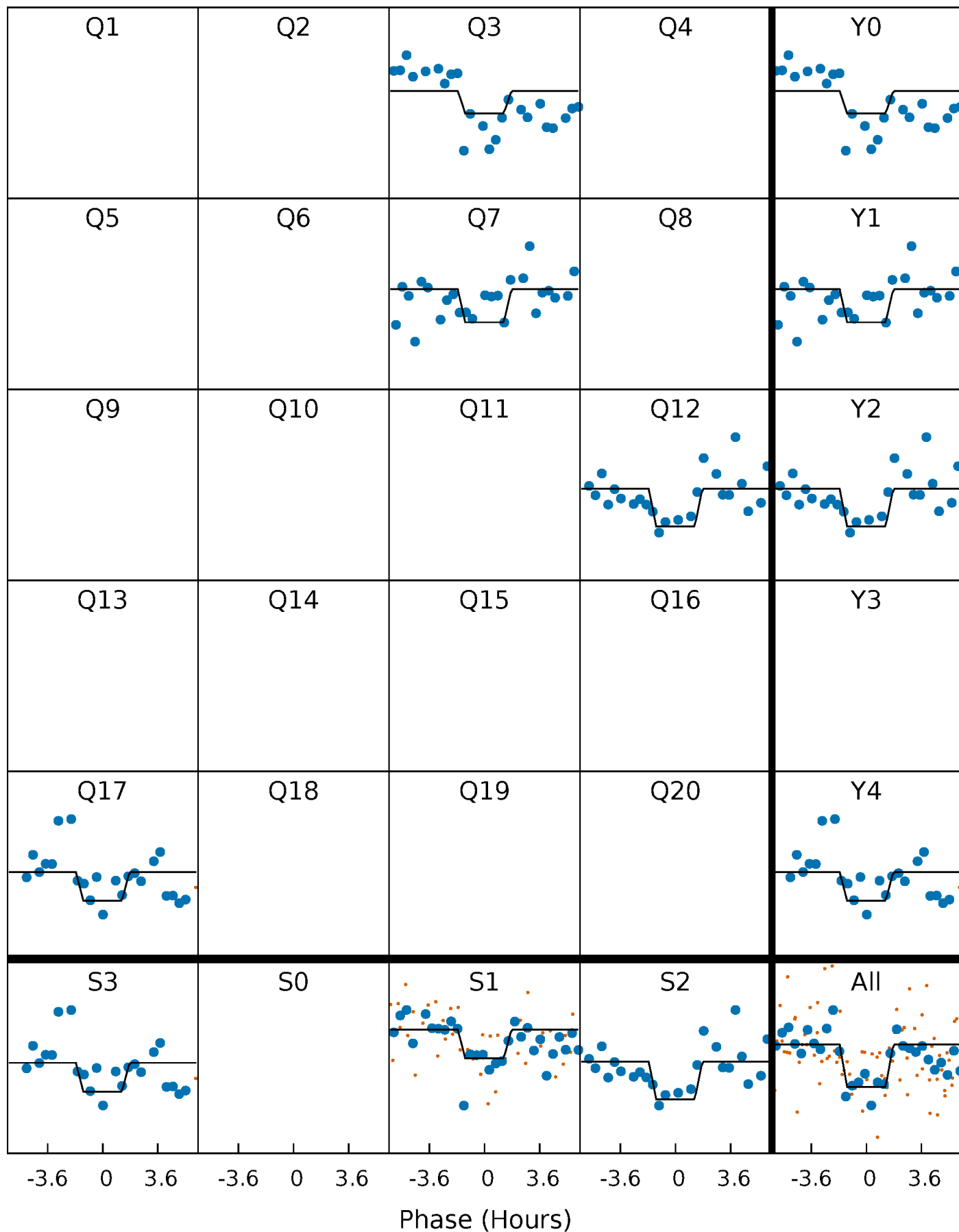
DV Quarter-Phased Transit Curves

TCE 011254601-01 P=432.281846 Days $T_0=264.323618$ (BKJD)



Alt. Detrend Quarter-Phased Transit Curves

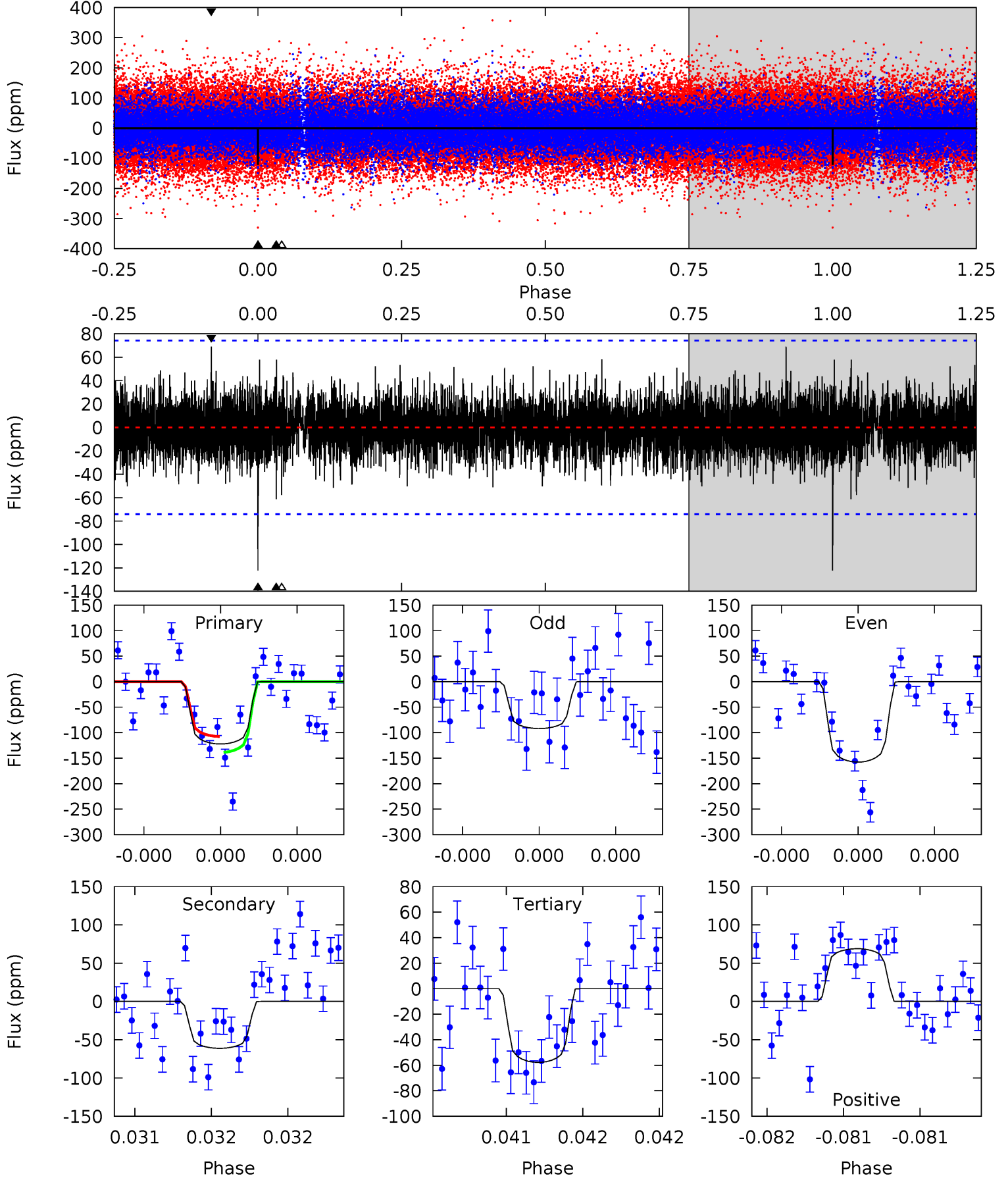
TCE 011254601-01 P=432.285584 Days $T_0=264.322081$ (BKJD)



DV Model-Shift Uniqueness Test

011254601-01, P = 432.281846 Days, E = 264.323618 Days

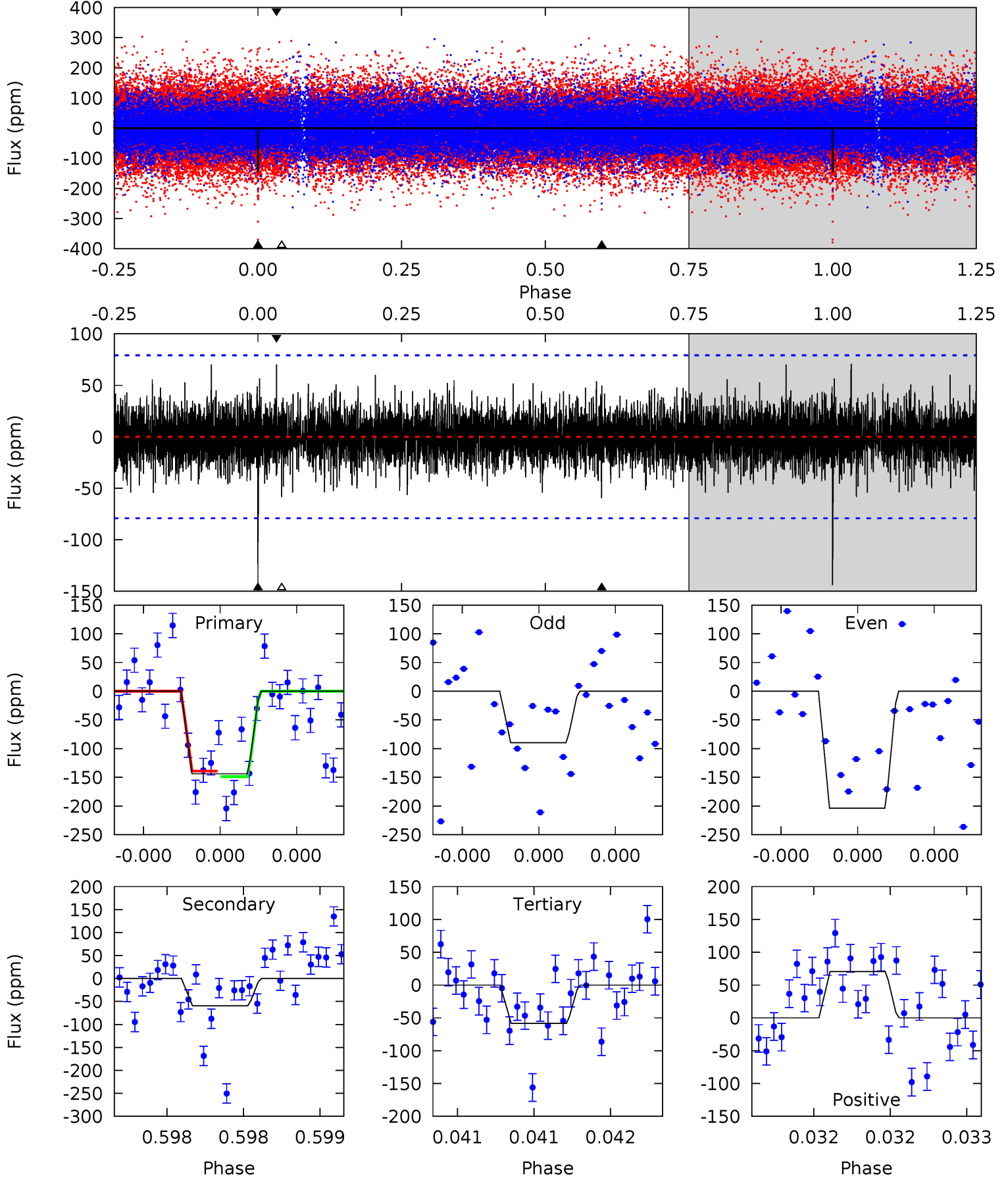
Pri	Sec	Ter	Pos	FA ₁	FA ₂	F _{Red}	Pri-Ter	Pri-Pos	Sec-Ter	Sec-Pos	Odd-Evn	DMM	Shape	TAT
9.26	4.64	4.38	5.22	5.62	3.55	1.16	4.88	4.04	0.26	-0.59	2.48	1.25	0.36	1.18



Alt Model-Shift Uniqueness Test

011254601-01, P = 432.285584 Days, E = 264.322081 Days

Pri	Sec	Ter	Pos	FA ₁	FA ₂	F _{Red}	Pri-Ter	Pri-Pos	Sec-Ter	Sec-Pos	Odd-Evn	DMM	Shape	TAT
10.3	4.24	4.17	5.02	5.64	3.59	1.11	6.10	5.25	0.07	-0.78	4.06	1.28	0.33	0.35



Stellar Parameters For KIC 011254601

	$T_{\text{eff}}(K)$	$\log(g)$	[Fe/H]	R (R_{\odot})	$M(M_{\odot})$	p_{\star} ($\text{g}\cdot\text{cm}^{-3}$)
	8572^{+238}_{-374}	$3.776^{+0.412}_{-0.137}$	$-0.200^{+0.350}_{-0.400}$	$3.034^{+0.895}_{-1.455}$	$2.009^{+0.385}_{-0.471}$	$0.101^{+0.399}_{-0.043}$
	+3%/-4%	+11%/-4%	+175%/-200%	+29%/-48%	+19%/-23%	+394%/-42%
Source	KIC0	KIC0	KIC0	DSEP		

KIC = Kepler Input Catalog; PHO = Photometry; SPE = Spectroscopy; AST = Asteroseismology
 TRA = Transits; DESP = Dartmouth Models; MULT = Multiple Models

Secondary Eclipse Parameters for KIC 011254601-01 / KOI

Detrend	Depth (ppm)	R_p (R_{\oplus})	T_{max} (K)	T_{obs} (K)	A_{obs}
DV	-61 ± 13	$4.42^{+3.74}_{-2.70}$	751^{+59}_{-84}	6014^{+4682}_{-1377}	3421^{+20752}_{-2406}
Alt.	-59 ± 14	$4.24^{+3.11}_{-2.64}$	754^{+69}_{-83}	6088^{+4303}_{-1267}	3522^{+19331}_{-2351}

T_{max} = Theoretical Maximum Planetary Temperature
 T_{obs} = Observed Planetary Temperature (Assuming $A=0.3$)
 A_{obs} = Observed Albedo (Assuming $T=0$)

If a secondary eclipse is present, the system is likely an EB if $T_{obs} \gg T_{max}$ AND $A_{obs} \gg 1.0$

DV Centroid Data

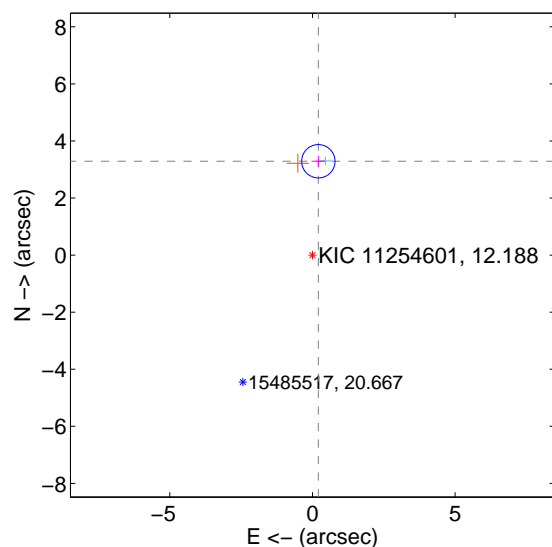
Supplemental centroid analysis for 011254601-01. Kepler magnitude: 12.19. Transit SNR 7.79

There are 1 quarters with good PRF difference image offsets

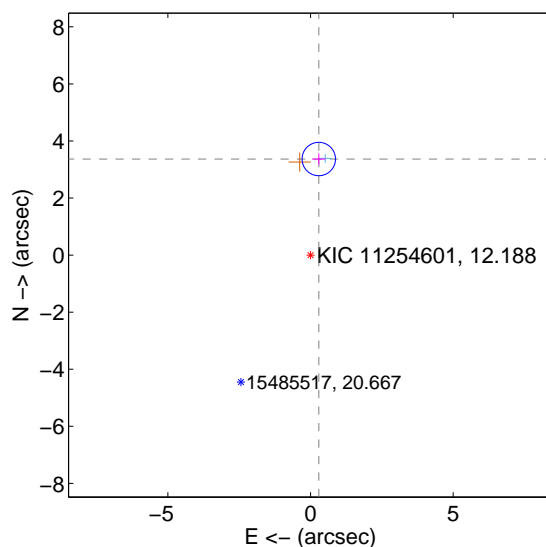
The direct PRF centroid is offset from the target star catalog position by about 0.14 arcsec

	Distance in arcsec	Distance / σ	Δ RA	Δ Dec
PRF-fit source offset from OOT	3.295 ± 0.195	16.92	-0.207 ± 0.235	3.289 ± 0.195
PRF-fit source offset from KIC position	3.379 ± 0.195	17.33	-0.290 ± 0.235	3.367 ± 0.195
photometric centroid source offset	2.17 ± 1.63	1.33	-0.30 ± 1.58	2.14 ± 1.63

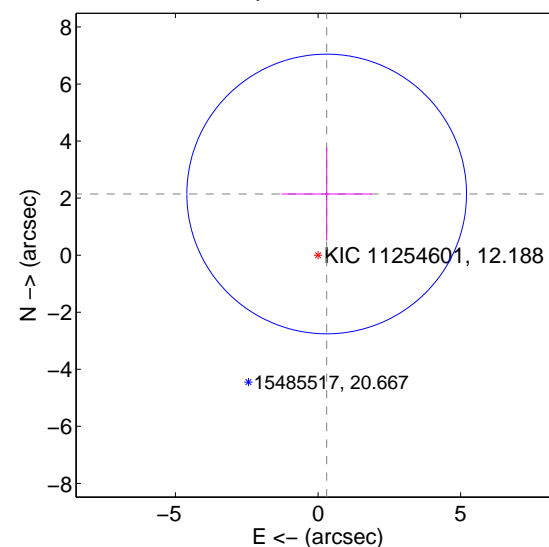
offset from difference PRF-fit to OOT PRF-fit



offset from difference PRF-fit to KIC position

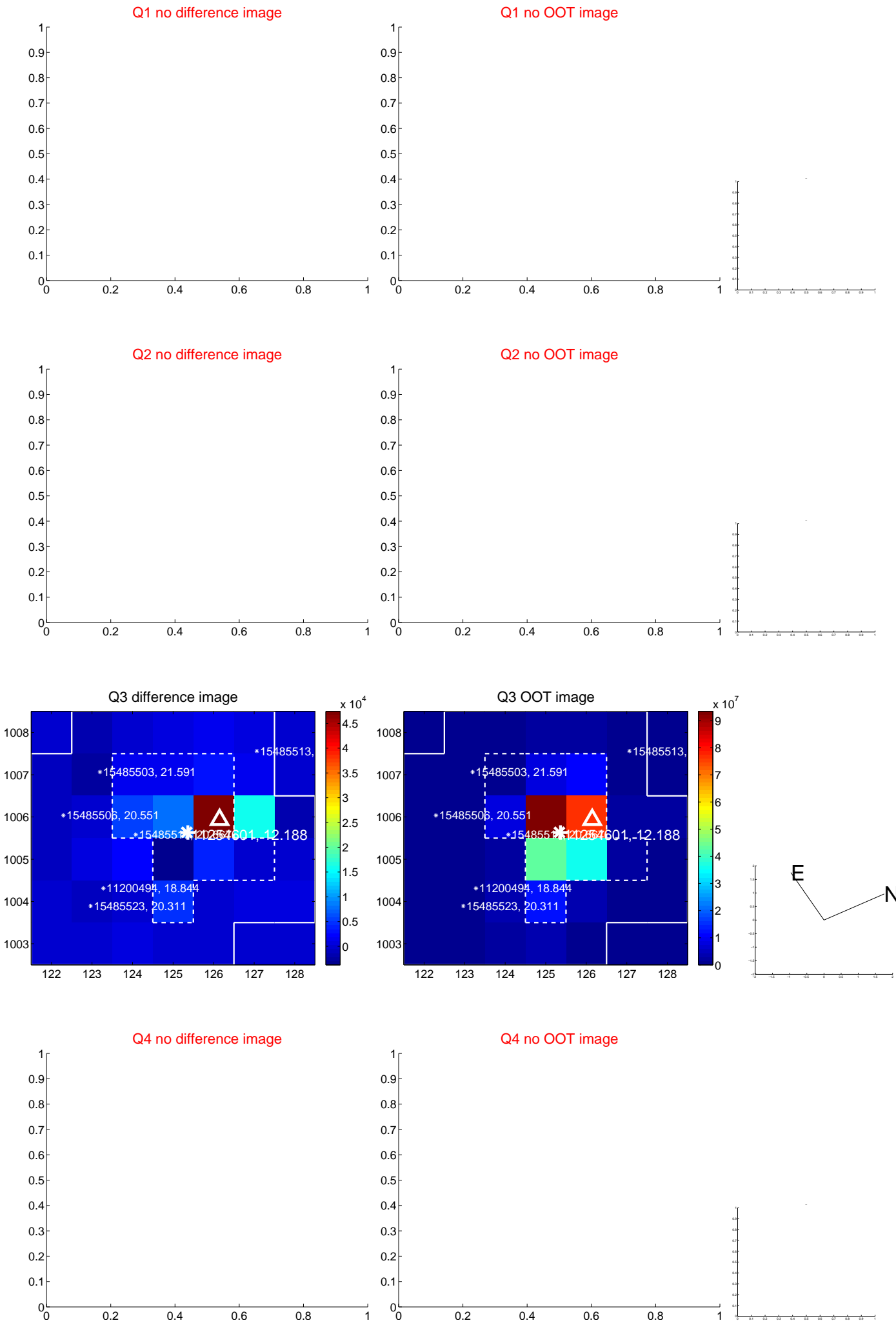


offset from photometric centroids

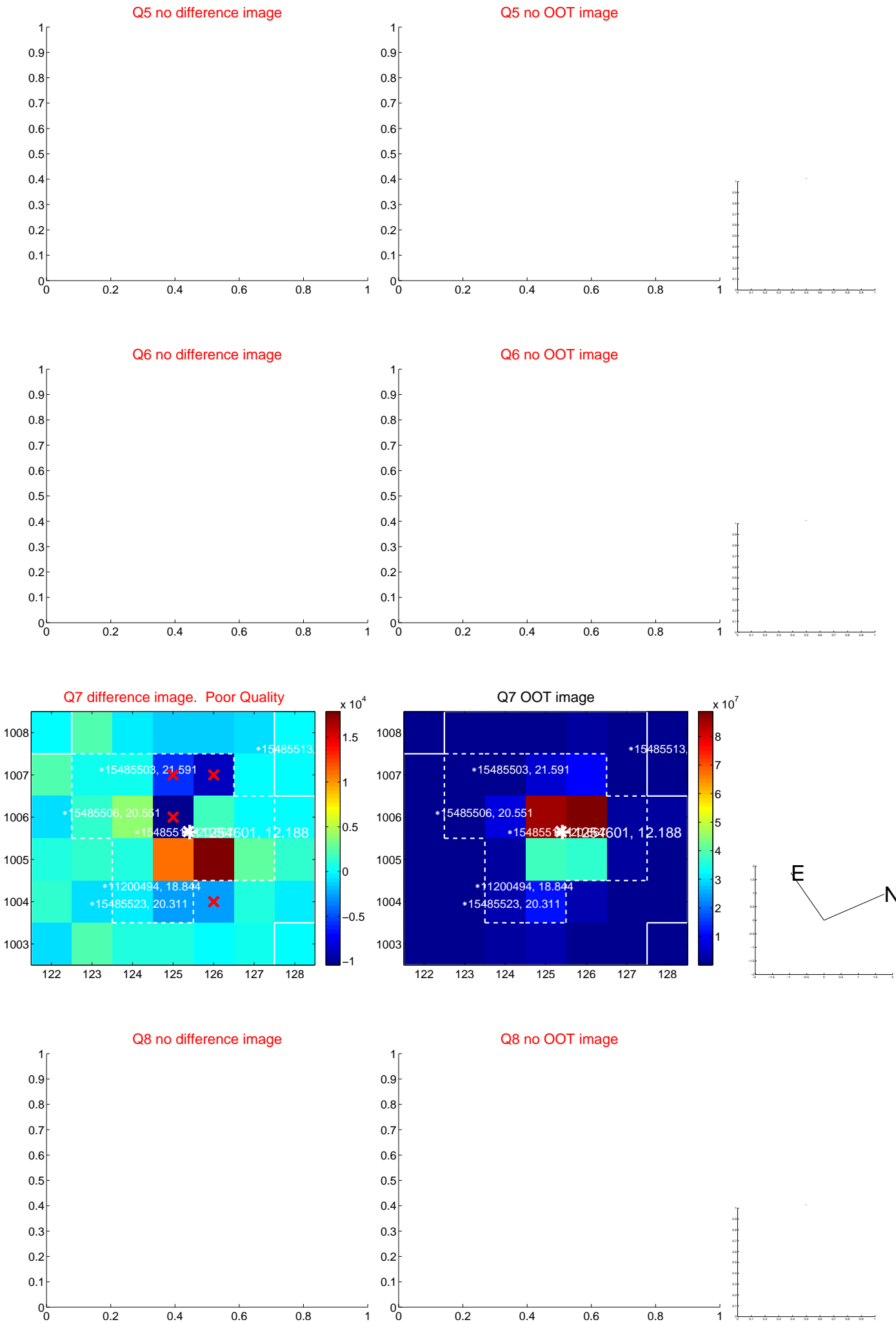


Centroid source offsets from the target star reconstructed from PRF and photometric centroids. Sky blue crosses: good quarterly centroid offsets; Vermillion crosses: bad quarterly centroid offsets; magenta cross: average over quarters. Length of the crosses: one- σ uncertainty. Blue circle: three- σ . Red *: target star. Blue *: Other stars. Text next to a star gives its KIC ID and kepmag. KIC IDs > 15,000,000 are from the UKIRT catalog.

white \times : KIC target position; $+$: OOT centroid; \triangle : difference centroid. red \times : large negative pixel value.



white \times : KIC target position; $+$: OOT centroid; \triangle : difference centroid. red \times : large negative pixel value.



white \times : KIC target position; $+$: OOT centroid; \triangle : difference centroid. red \times : large negative pixel value.

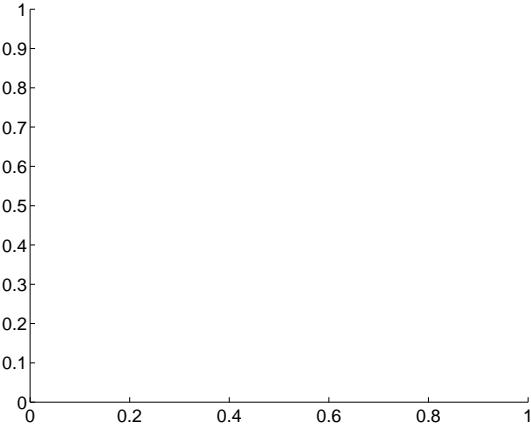
Q9 no difference image



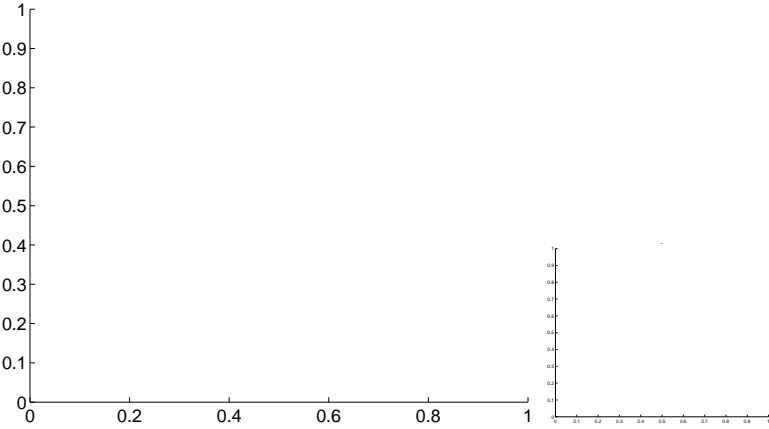
Q9 no OOT image



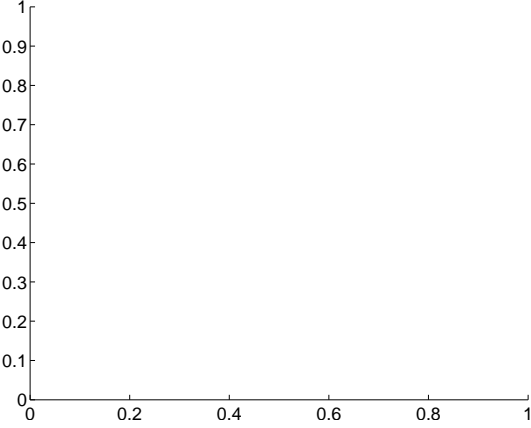
Q10 no difference image



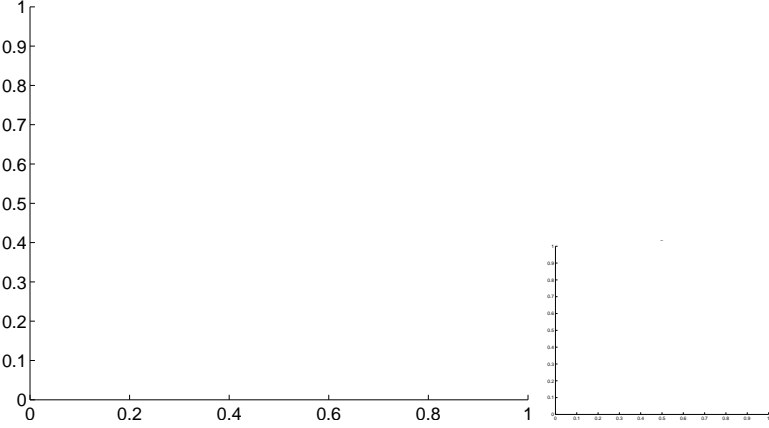
Q10 no OOT image



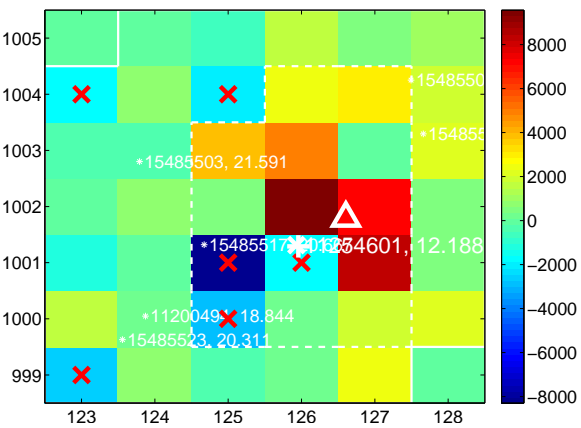
Q11 no difference image



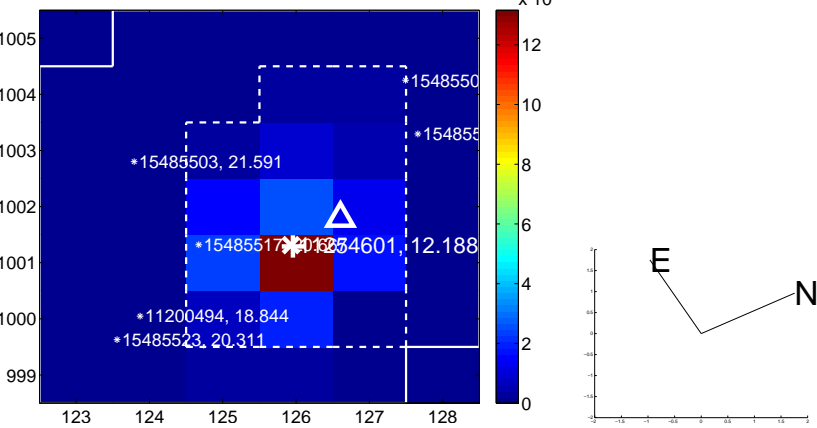
Q11 no OOT image



Q12 difference image. Poor Quality



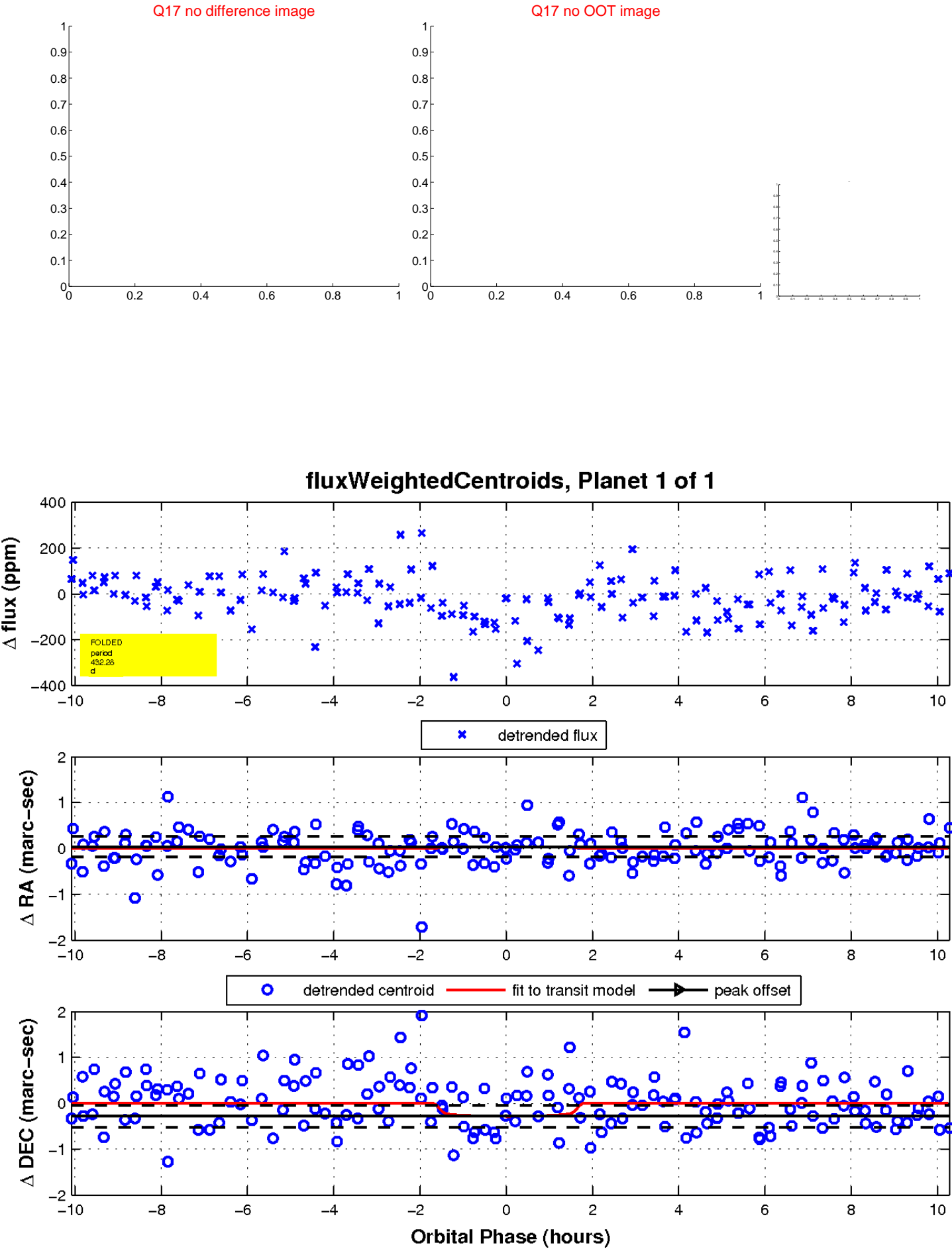
Q12 OOT image



white \times : KIC target position; $+$: OOT centroid; \triangle : difference centroid. red \times : large negative pixel value.



white \times : KIC target position; $+$: OOT centroid; \triangle : difference centroid. red \times : large negative pixel value.



UKIRT Image

Declination

