

KIC 011186590

Q1-17 DR25 TCE Parameters

TCE	Run Type	KOI?	Period (Days)	Epoch (BKJD)	Depth (ppm)	Duration (Hours)	MES	SNR	R_{\star} (R_{\odot})	T_{\star} (K)	R_p (R_{\oplus})	S_p (S_{\oplus})
011186590-01	OBS	No	0.740762	131.879375	4.3	4.756	11.0	2.2	3.60	7217	0.77	81196.51

Robovetter Results

TCE	Run Type	Disp	Score	N	S	C	E	Comments
011186590-01	OBS	FP	0.00	1	0	0	0	LPP_DV—LPP_ALT

Notes: OBS = Observed. INJ = Injected. INV = Inverted. SCR = Scrambled.

N = Not Transit-Like. S = Stellar Eclipse. C = Centroid Offset. E = Ephemeris Match.

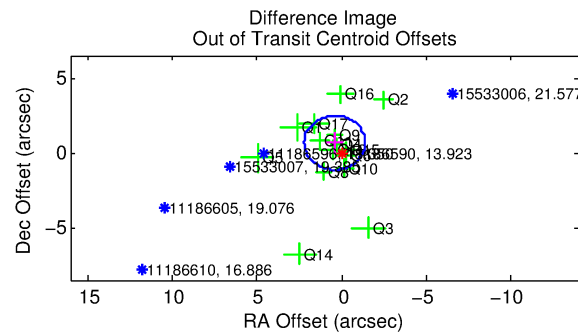
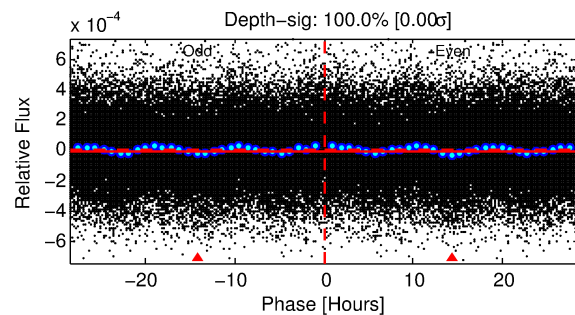
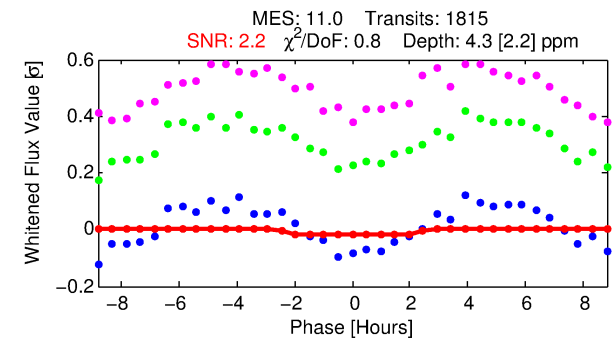
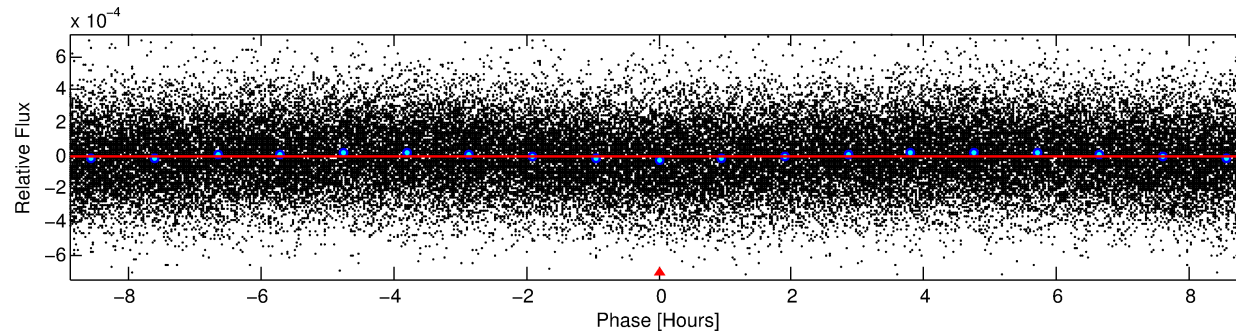
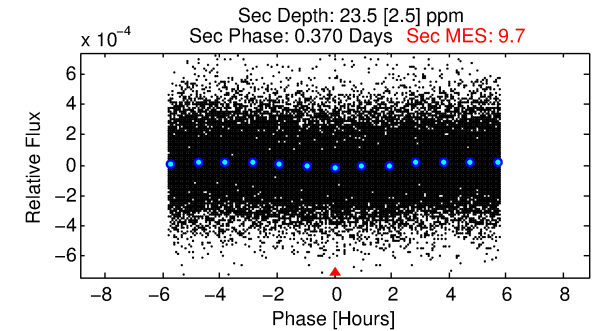
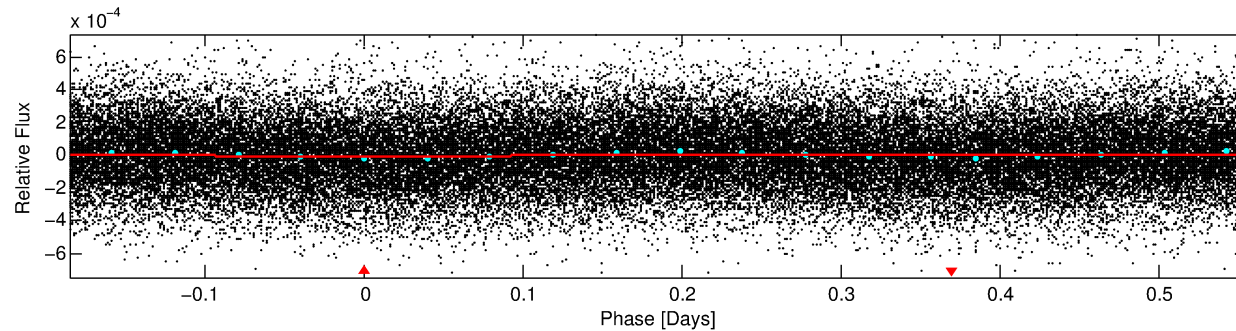
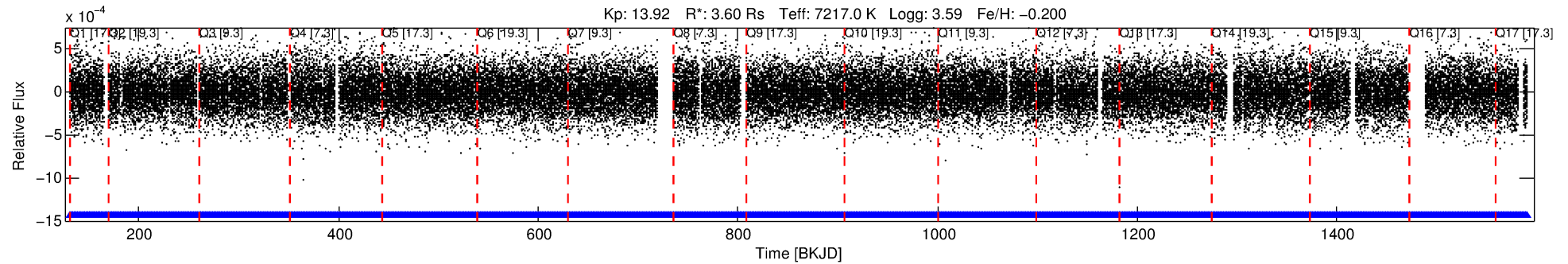
See http://exoplanetarchive.ipac.caltech.edu/docs/API_kepcandidate_columns.html#proj_disp_col for comment definitions.

Ephemeris Match Information For 011186590-01

No Significant Match Found

DV One-Page Summary

KIC: 11186590 Candidate: 1 of 1 Period: 0.741 d



DV Fit Results:

Period = 0.74076 [0.00006] d
Epoch = 131.8794 [0.0224] BKJD
Rp/R* = 0.0020 [0.0029]
a/R* = 1.27 [3.49]
b = 0.50 [11.04]
Seff = 81196.51 [75288.51]
Teq = 4304 [998] K
Rp = 0.77 [1.20] Re
a = 0.0197 [0.0108] AU
Ag = 8.46 [26.03] [0.29σ]
Teffp = 11351 [8349] K [0.84σ]

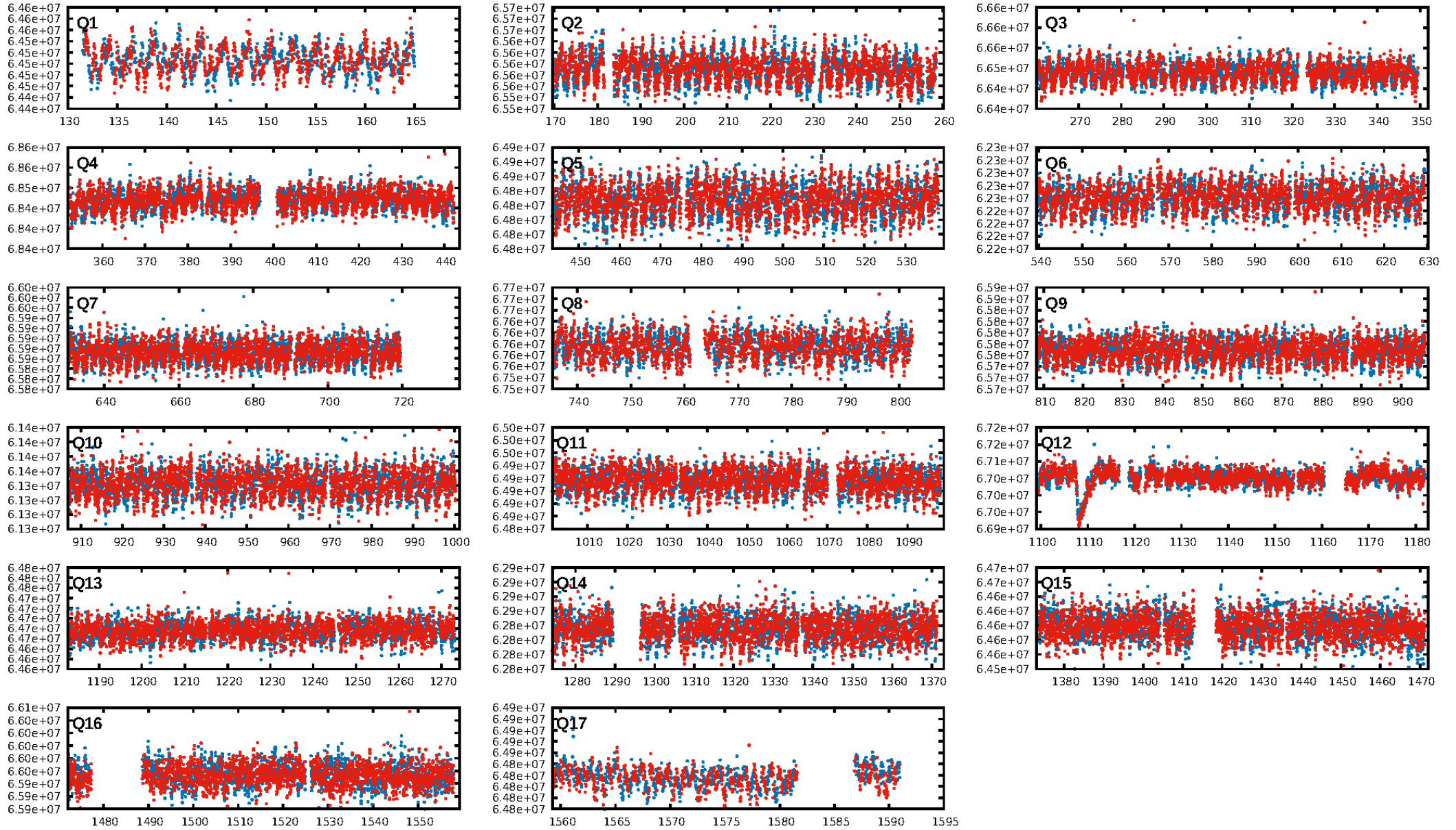
DV Diagnostic Results:

ShortPeriod-sig: N/A
LongPeriod-sig: N/A
ModelChiSquare2-sig: N/A
ModelChiSquareGof-sig: N/A
Bootstrap-pfa: 3.34e-14
RollingBand-fgt: 1.00 [1733/1733]
GhostDiagnostic-chr: N/A
Centroid-sig: N/A
Centroid-so: N/A
OotOffset-rm: 0.776 arcsec [1.29σ]
KicOffset-rm: 0.854 arcsec [1.35σ]
OotOffset-st: 4/3/3/5 [15]
KicOffset-st: 4/3/3/5 [15]
DiffImageQuality-fgm: 0.47 [7/15]
DiffImageOverlap-fno: 1.00 [17/17]

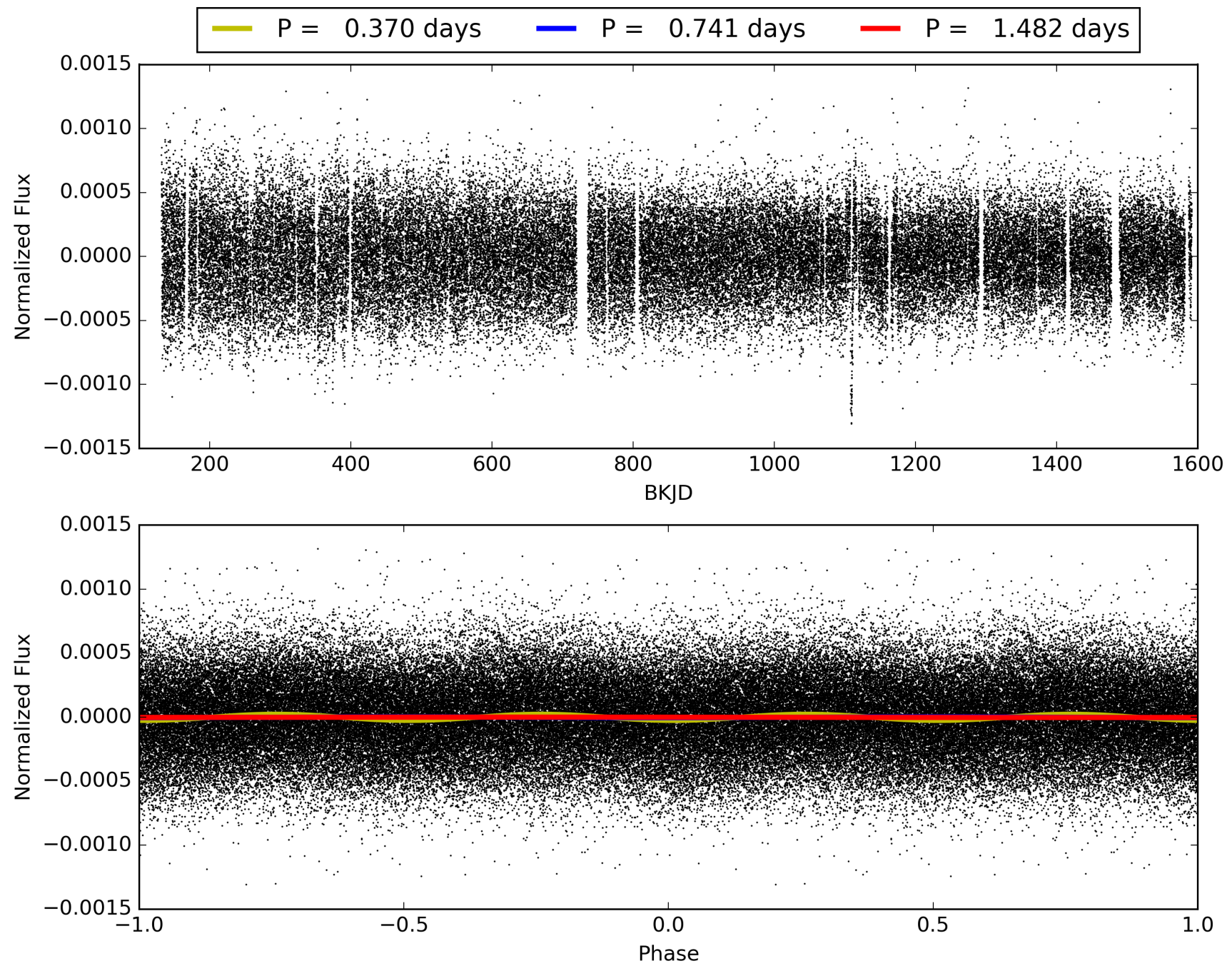
Software Revision: svn+ssh://murzim/repo/soc/tags/release/9.3.42@60958 -- Date Generated: 29-Jan-2016 03:19:56 Z

This Data Validation Report Summary was produced in the Kepler Science Operations Center Pipeline at NASA Ames Research Center

TCE 011186590-01, PDC Light Curves

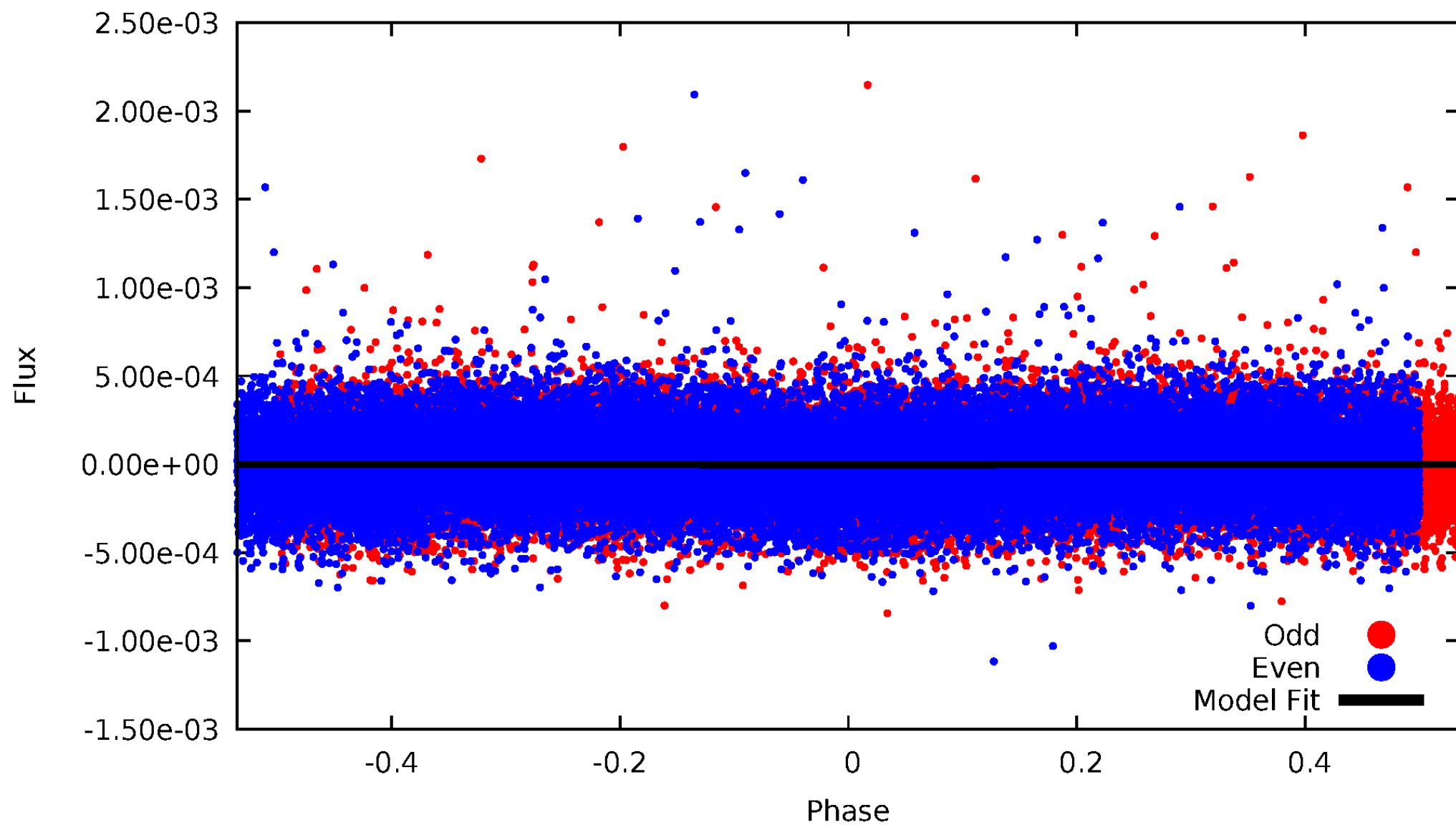


TCE 011186590-01



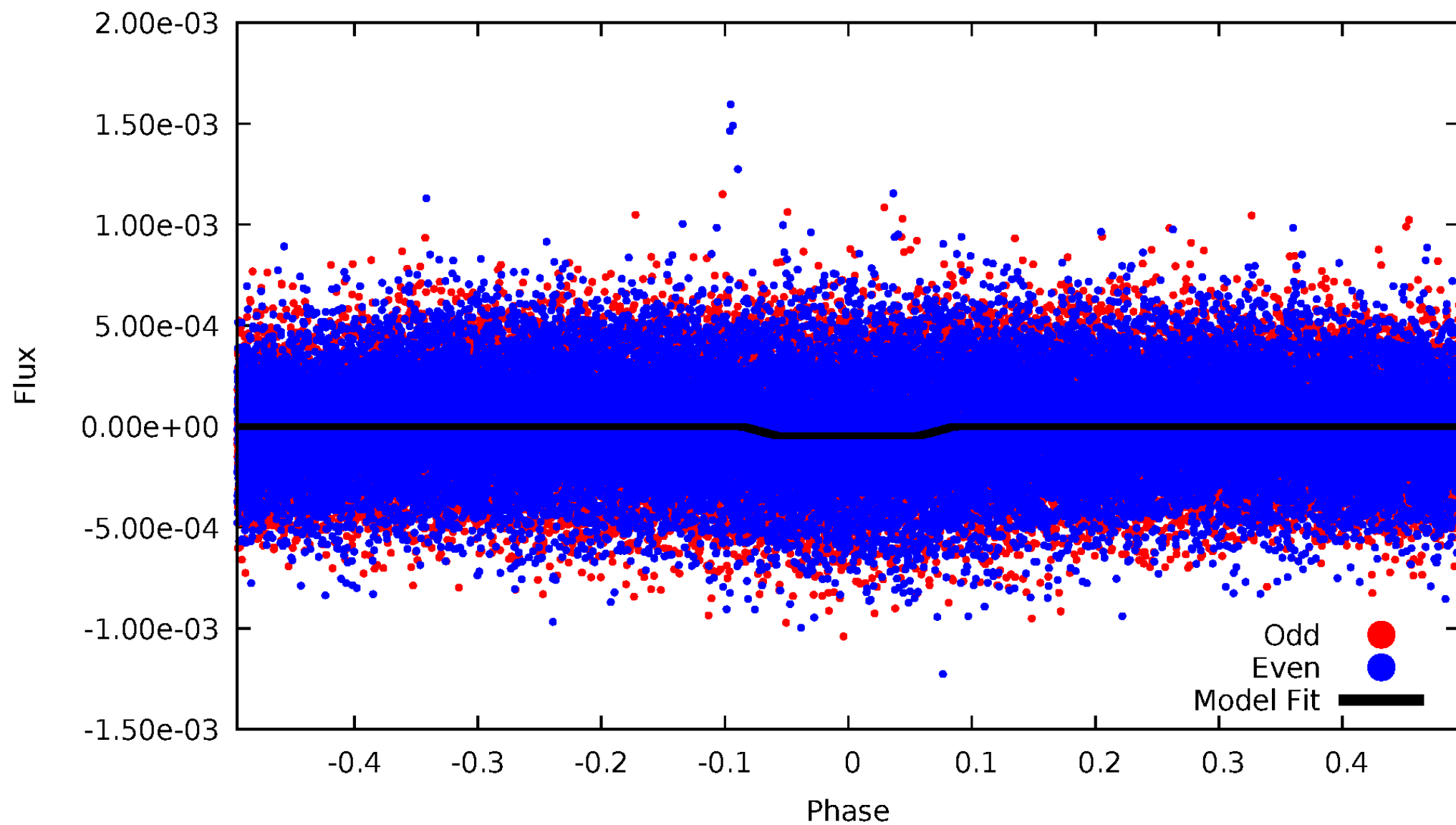
DV Odd/Even

TCE 011186590-01



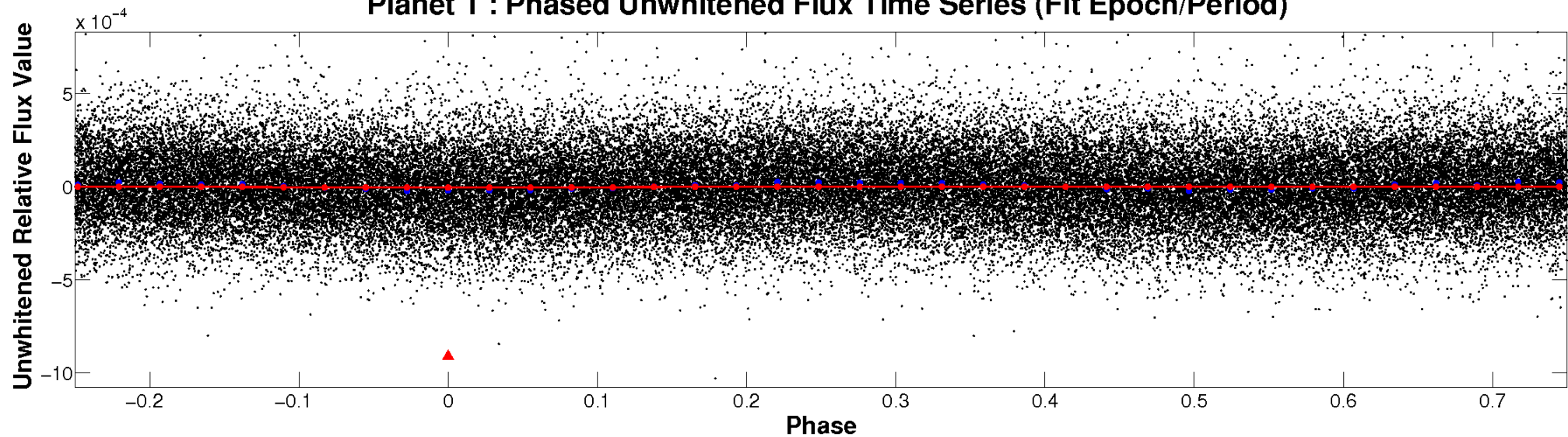
ALT Odd/Even

TCE 011186590-01

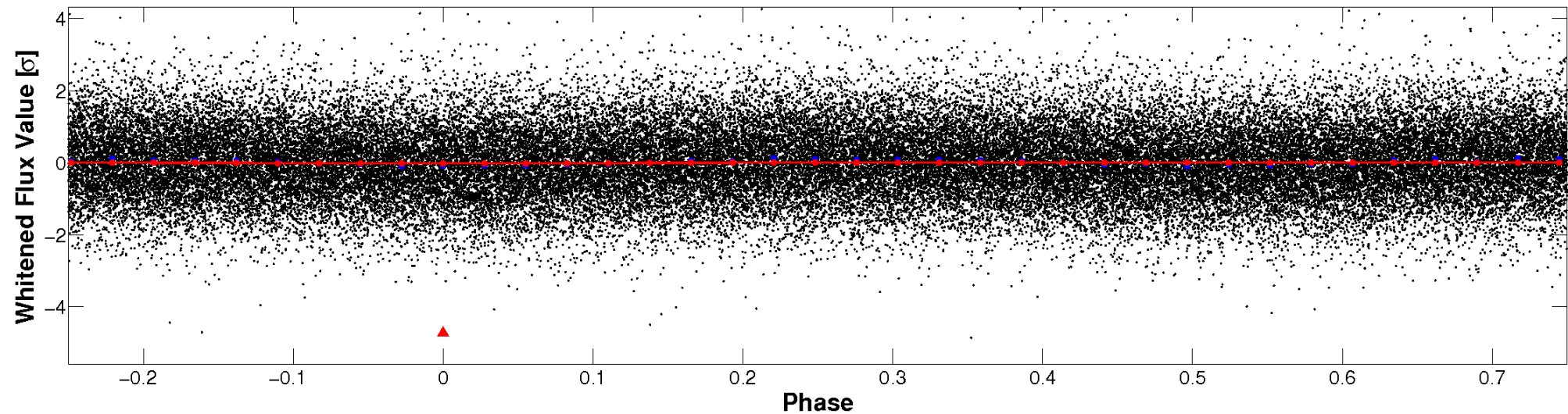


Non-Whitened Vs. Whitened Light Curve

Planet 1 : Phased Unwhitened Flux Time Series (Fit Epoch/Period)

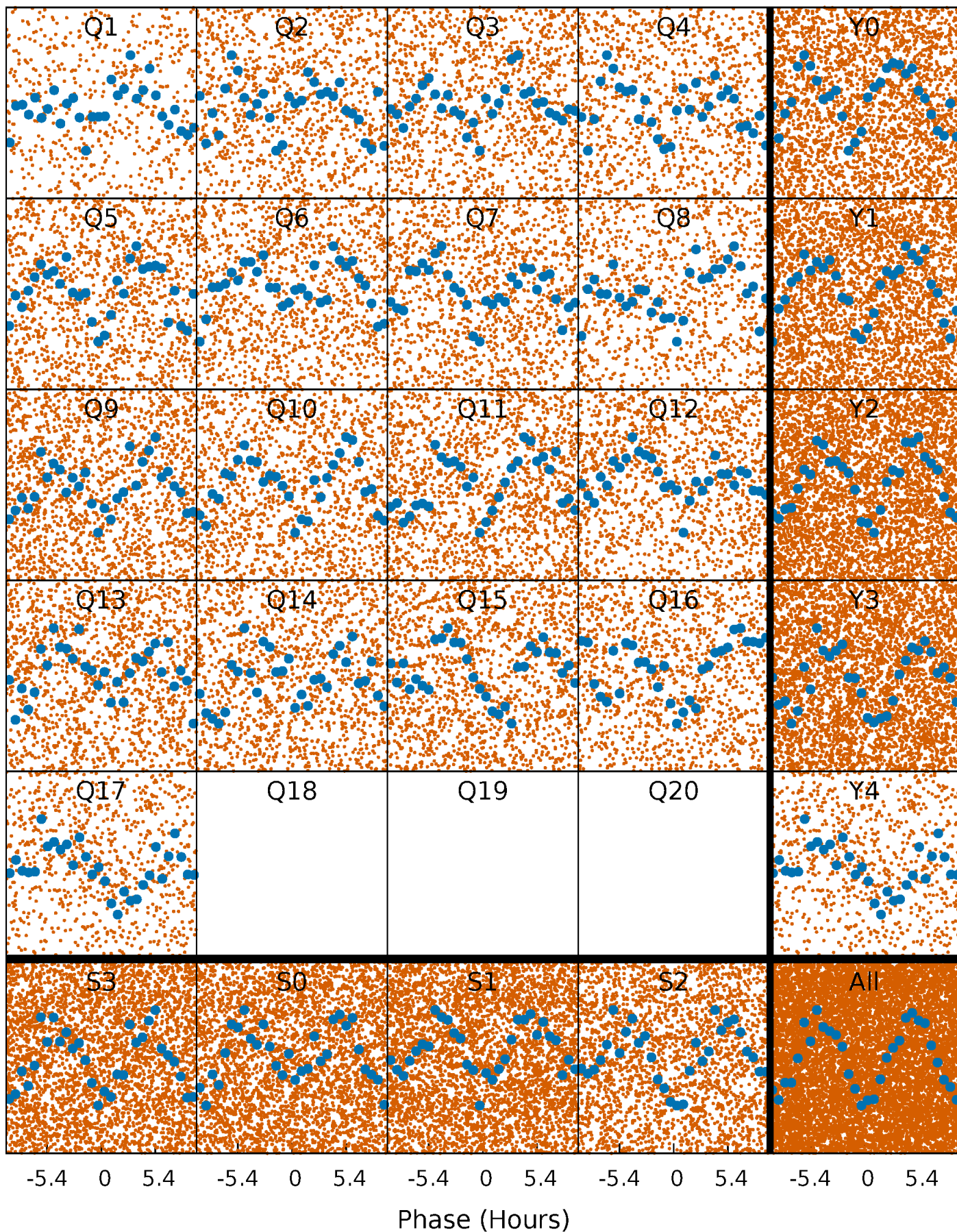


Planet 1 : Phased Whitened Flux Time Series (Fit Epoch/Period)



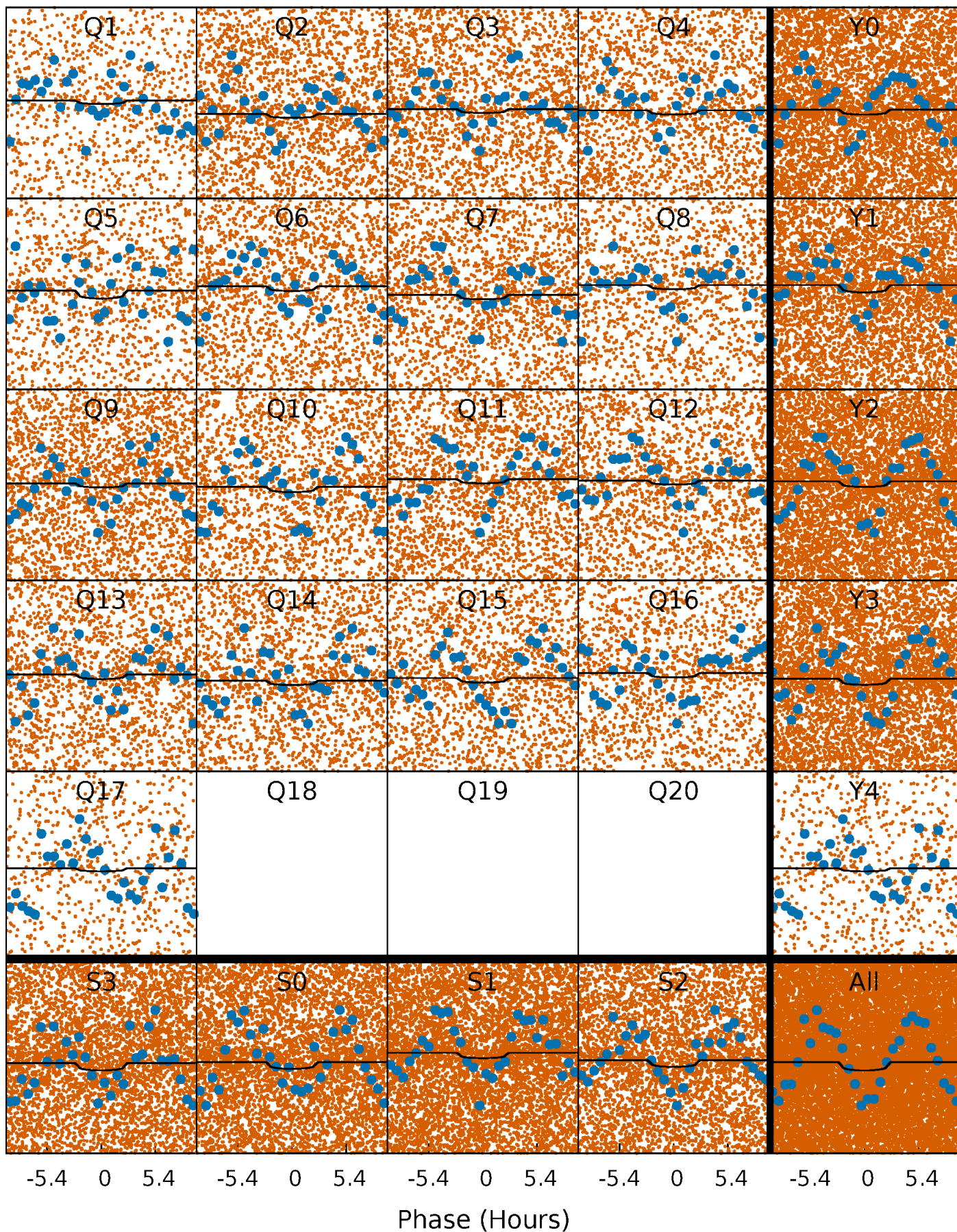
PDC Quarter-Phased Transit Curves

TCE 011186590-01 P= 0.740762 Days $T_0=131.879375$ (BKJD)



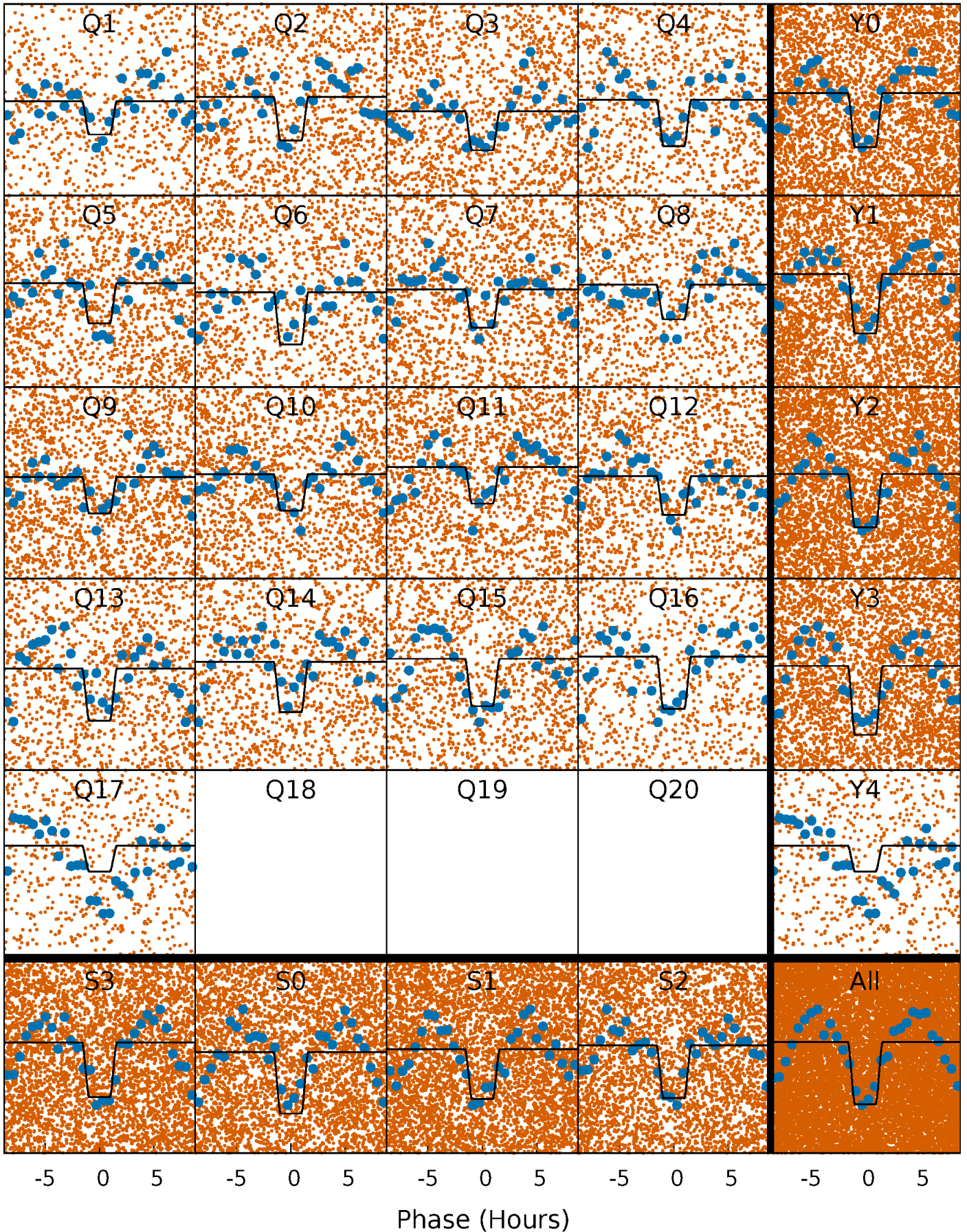
DV Quarter-Phased Transit Curves

TCE 011186590-01 P= 0.740762 Days $T_0=131.879375$ (BKJD)



Alt. Detrend Quarter-Phased Transit Curves

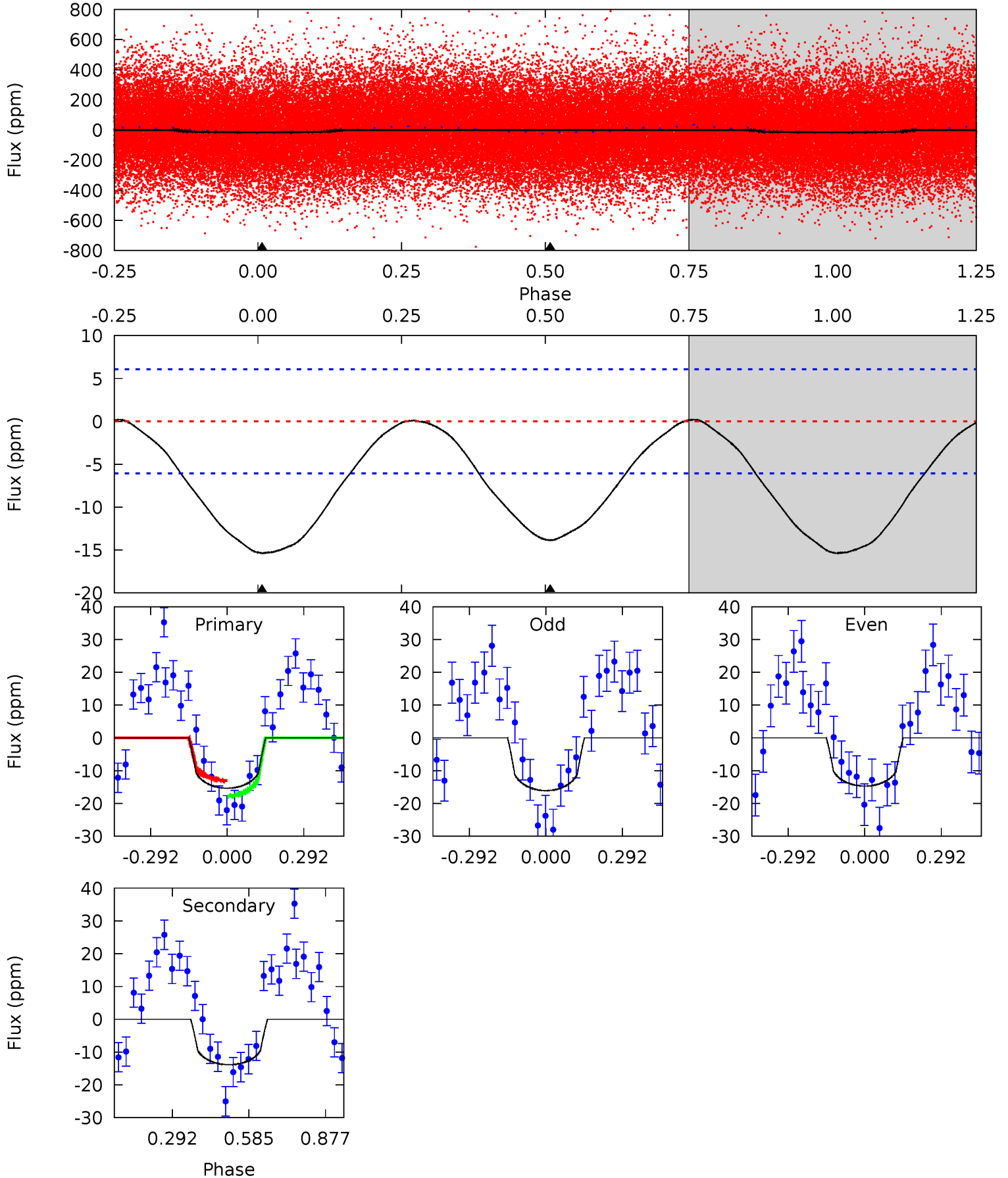
TCE 011186590-01 P= 0.740827 Days $T_0=131.825782$ (BKJD)



DV Model-Shift Uniqueness Test

011186590-01, P = 0.740762 Days, E = 131.138613 Days

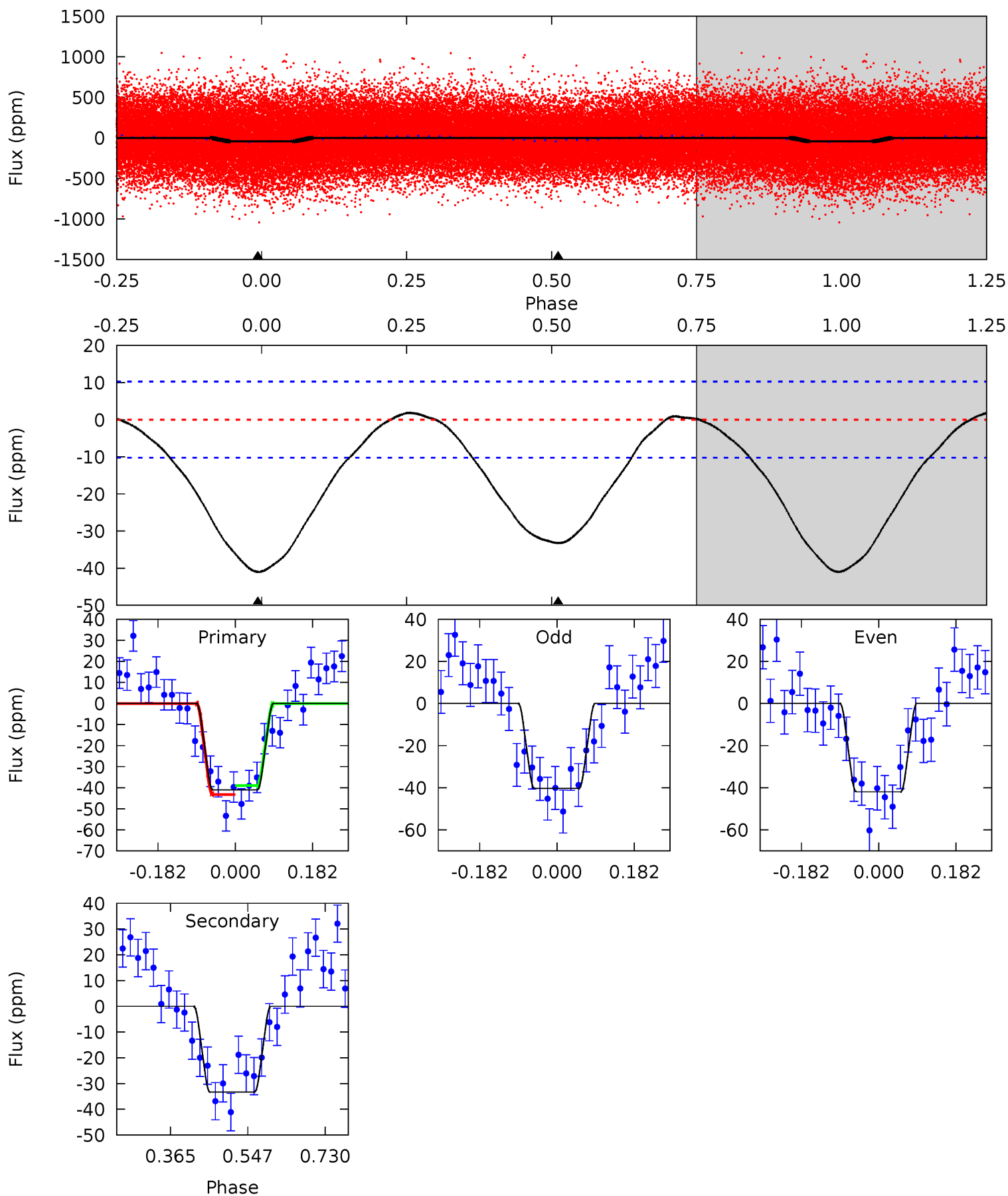
Pri	Sec	Ter	Pos	FA ₁	FA ₂	F _{Red}	Pri-Ter	Pri-Pos	Sec-Ter	Sec-Pos	Odd-Evn	DMM	Shape	TAT
11.0	9.89	0	0	4.33	1.05	0.19	11.0	11.0	9.89	9.89	0.49	0.93	0.01	1.69



Alt Model-Shift Uniqueness Test

011186590-01, P = 0.740827 Days, E = 131.084955 Days

Pri	Sec	Ter	Pos	FA ₁	FA ₂	F _{Red}	Pri-Ter	Pri-Pos	Sec-Ter	Sec-Pos	Odd-Evn	DMM	Shape	TAT
17.7	14.4	0	0	4.44	1.33	0.85	17.7	17.7	14.4	14.4	0.34	0.89	0.04	0.92



Stellar Parameters For KIC 011186590

	$T_{\text{eff}} (K)$	$\log(g)$	[Fe/H]	$R (R_{\odot})$	$M (M_{\odot})$	$p_{\star} (\text{g}\cdot\text{cm}^{-3})$
	7217^{+226}_{-302}	$3.594^{+0.549}_{-0.061}$	$-0.200^{+0.250}_{-0.300}$	$3.599^{+0.332}_{-1.882}$	$1.857^{+0.164}_{-0.493}$	$0.056^{+0.378}_{-0.012}$
	+3%/-4%	+15%/-2%	+125%/-150%	+9%/-52%	+9%/-27%	+674%/-21%
Source	KIC0	KIC0	KIC0	DSEP		

KIC = Kepler Input Catalog; PHO = Photometry; SPE = Spectroscopy; AST = Asteroseismology
 TRA = Transits; DESP = Dartmouth Models; MULT = Multiple Models

Secondary Eclipse Parameters for KIC 011186590-01 / KOI

Detrend	Depth (ppm)	$R_p (R_{\oplus})$	$T_{max} (K)$	$T_{obs} (K)$	A_{obs}
DV	-14 ± 1	$0.97^{+0.92}_{-0.66}$	5776^{+413}_{-745}	8241^{+13020}_{-2875}	$3.234^{+26.198}_{-2.436}$
Alt.	-33 ± 2	$2.33^{+1.19}_{-1.07}$	5760^{+416}_{-689}	6093^{+2538}_{-1352}	$1.302^{+2.972}_{-0.725}$

T_{max} = Theoretical Maximum Planetary Temperature

T_{obs} = Observed Planetary Temperature (Assuming $A=0.3$)

A_{obs} = Observed Albedo (Assuming $T=0$)

If a secondary eclipse is present, the system is likely an EB if $T_{obs} \gg T_{max}$ AND $A_{obs} \gg 1.0$

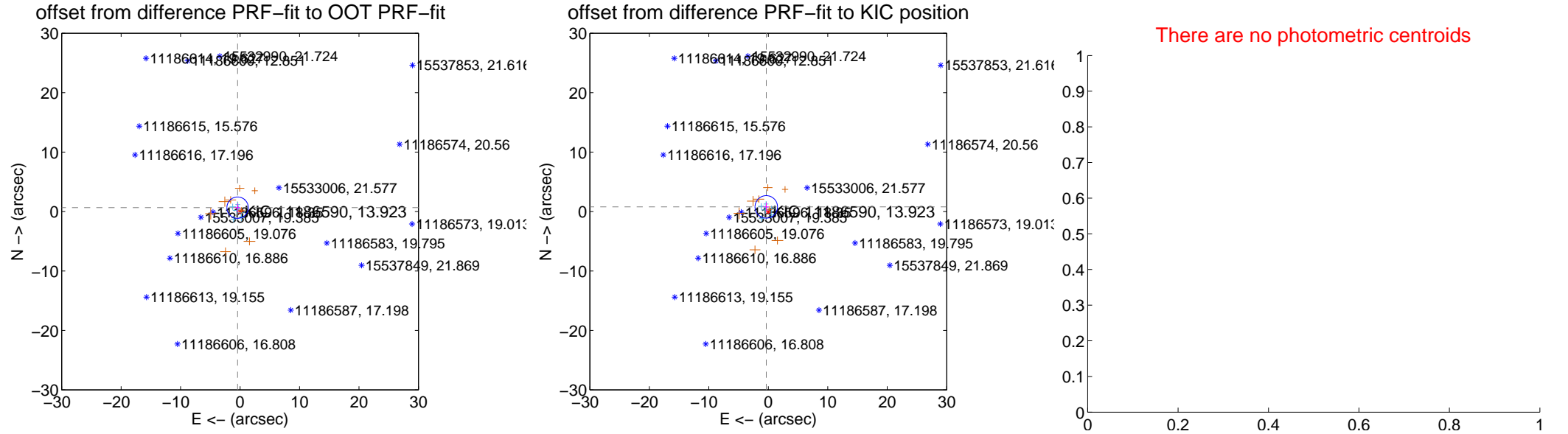
DV Centroid Data

Supplemental centroid analysis for 011186590-01. Kepler magnitude: 13.92. Transit SNR 2.23

There are 7 quarters with good PRF difference image offsets

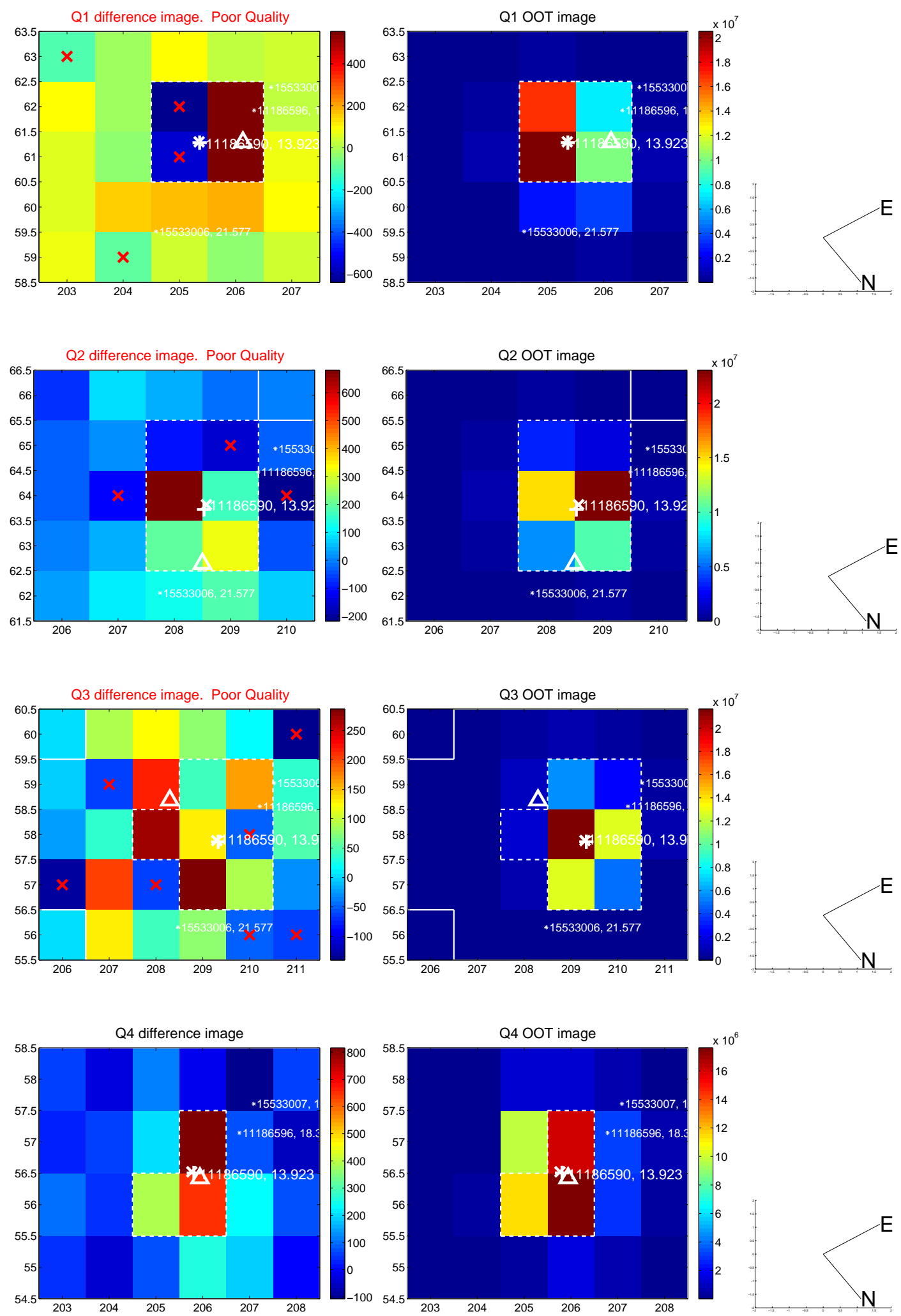
The direct PRF centroid is offset from the target star catalog position by about 0.13 arcsec

	Distance in arcsec	Distance / σ	Δ RA	Δ Dec
PRF-fit source offset from OOT	0.776 ± 0.600	1.29	0.417 ± 0.451	0.654 ± 0.677
PRF-fit source offset from KIC position	0.854 ± 0.631	1.35	0.339 ± 0.442	0.784 ± 0.702
photometric centroid source offset	—	—	—	—

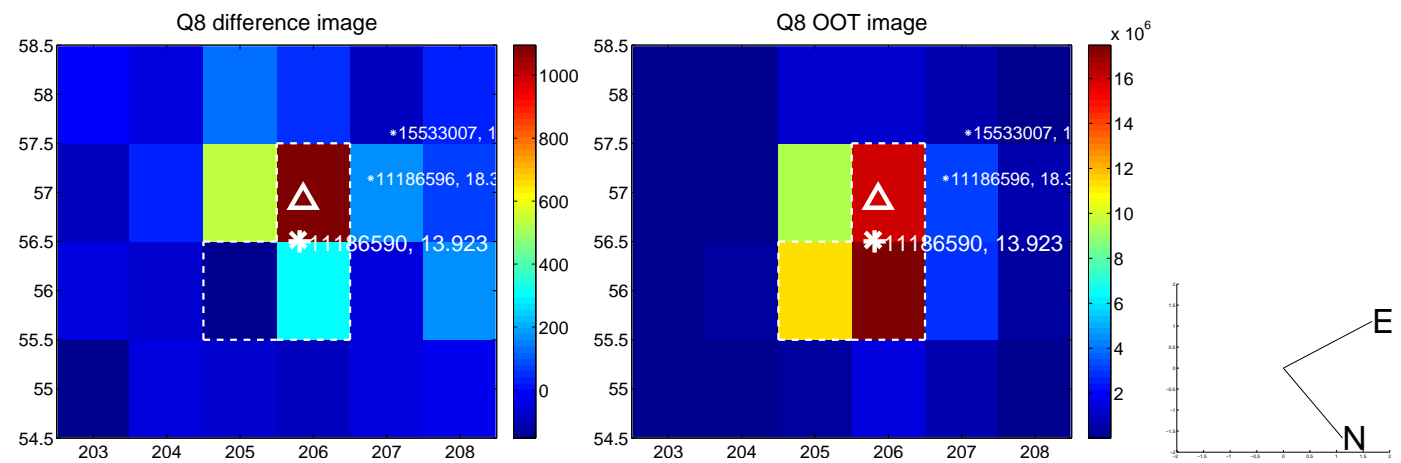
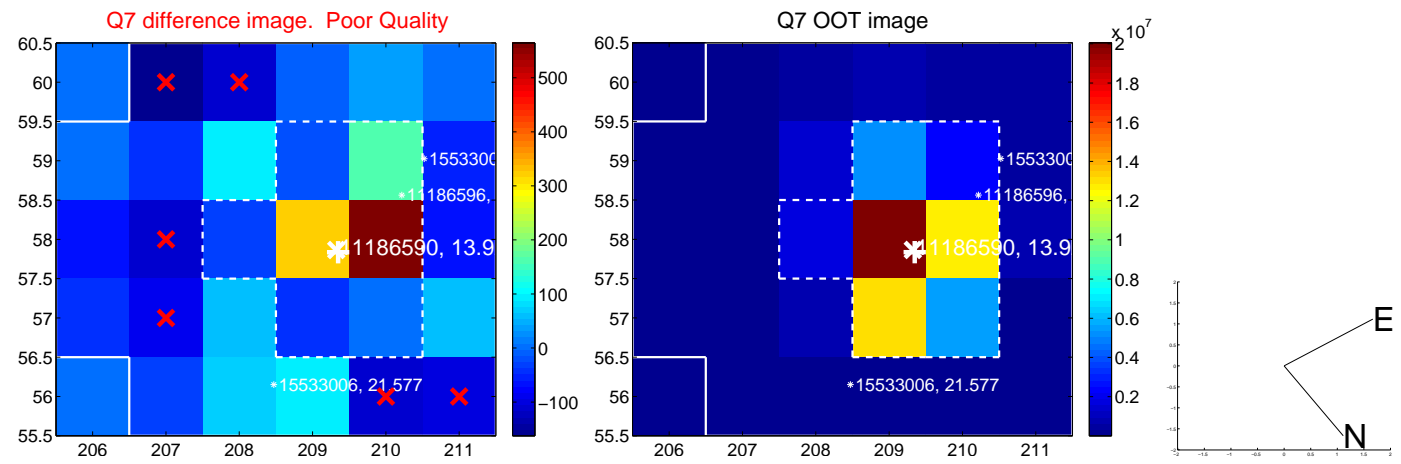
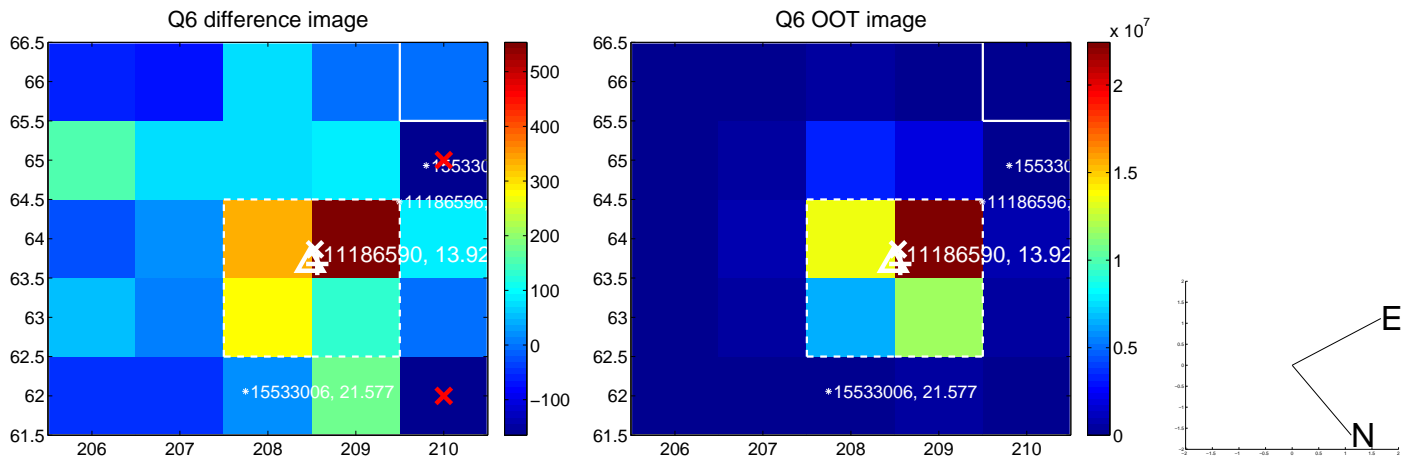
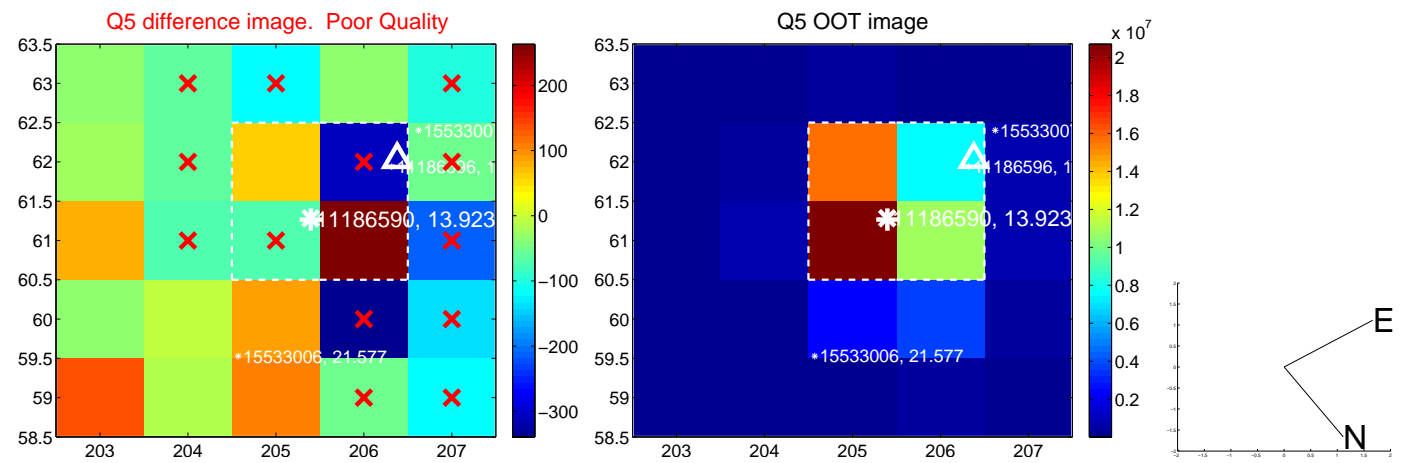


Centroid source offsets from the target star reconstructed from PRF and photometric centroids. Sky blue crosses: good quarterly centroid offsets; Vermillion crosses: bad quarterly centroid offsets; magenta cross: average over quarters. Length of the crosses: one- σ uncertainty. Blue circle: three- σ . Red *: target star. Blue *: Other stars. Text next to a star gives its KIC ID and kepmag. KIC IDs > 15,000,000 are from the UKIRT catalog.

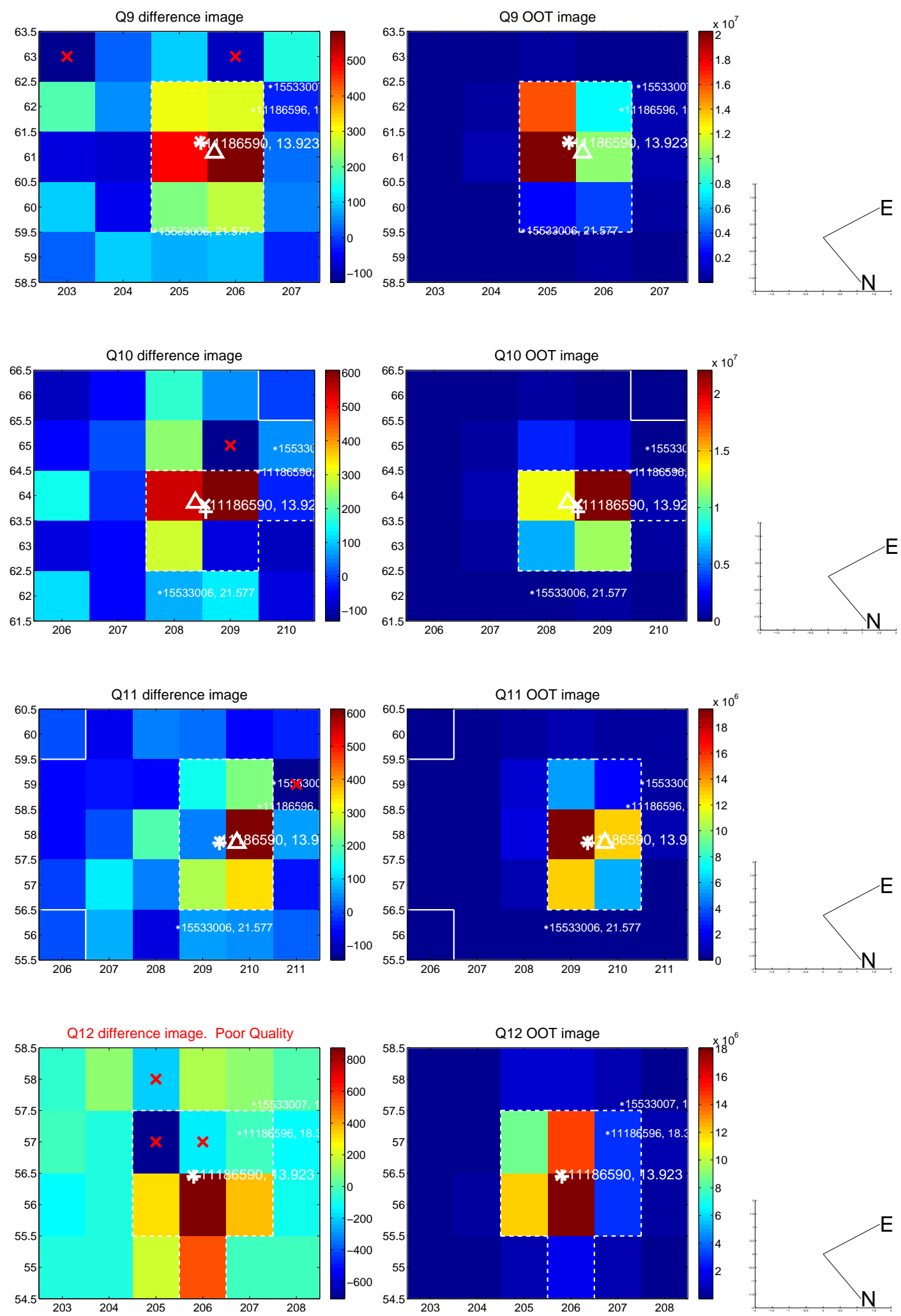
white \times : KIC target position; +: OOT centroid; \triangle : difference centroid. red \times : large negative pixel value.



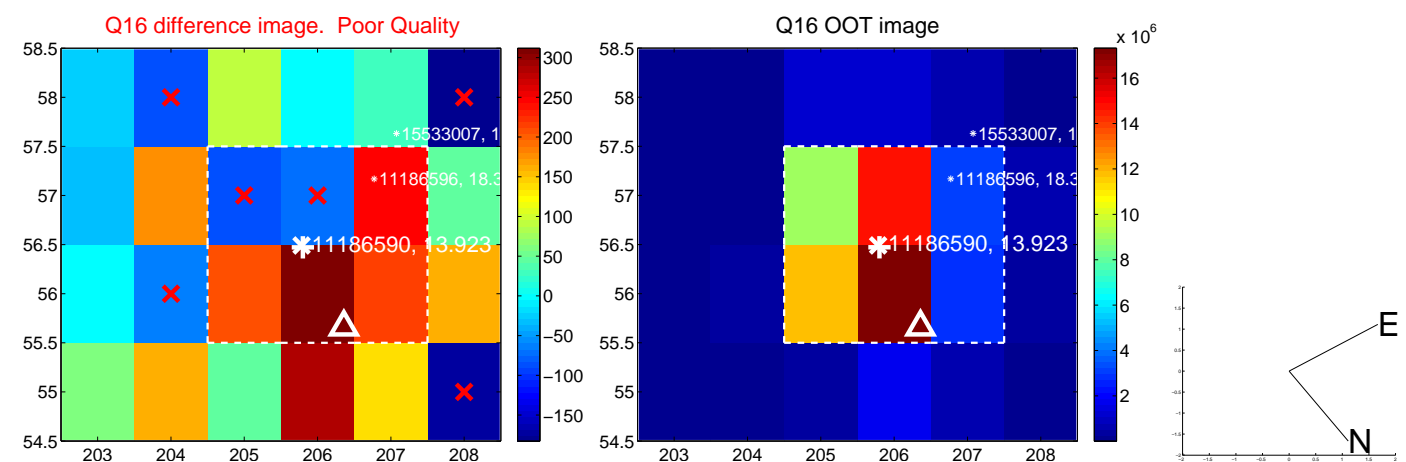
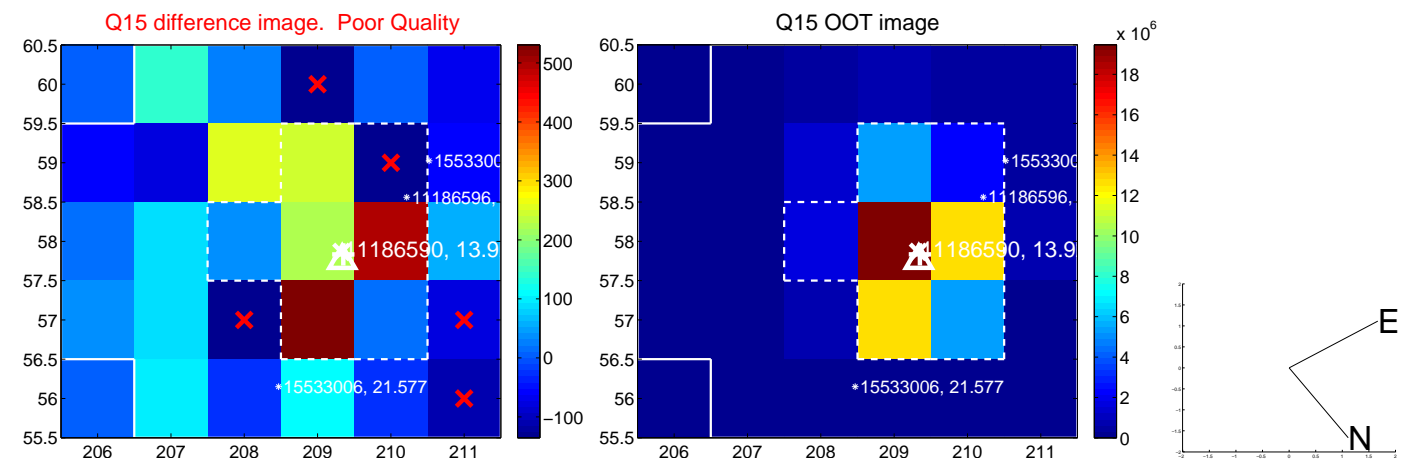
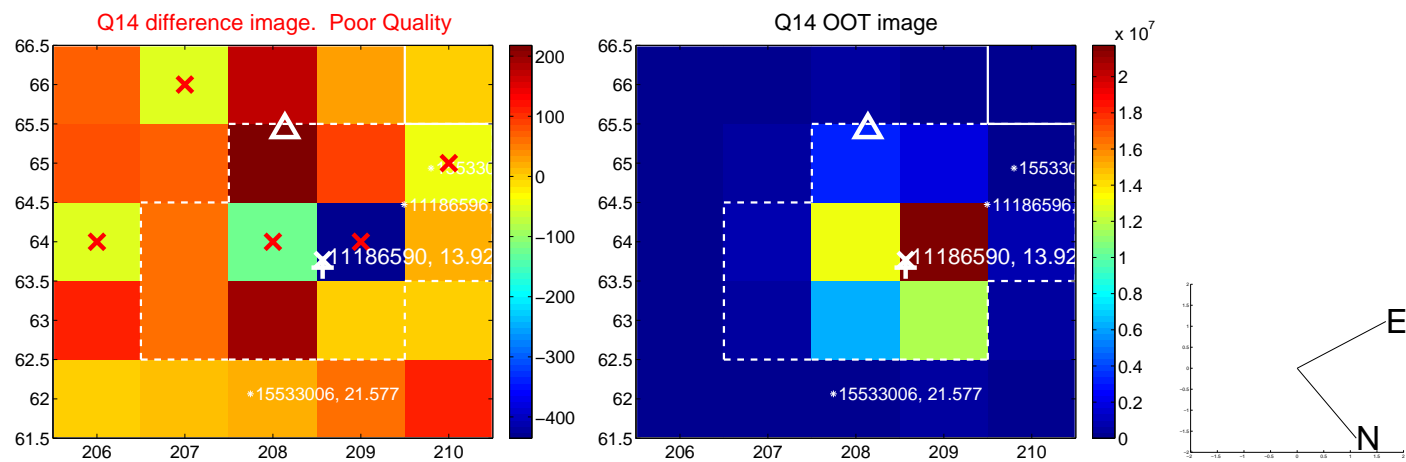
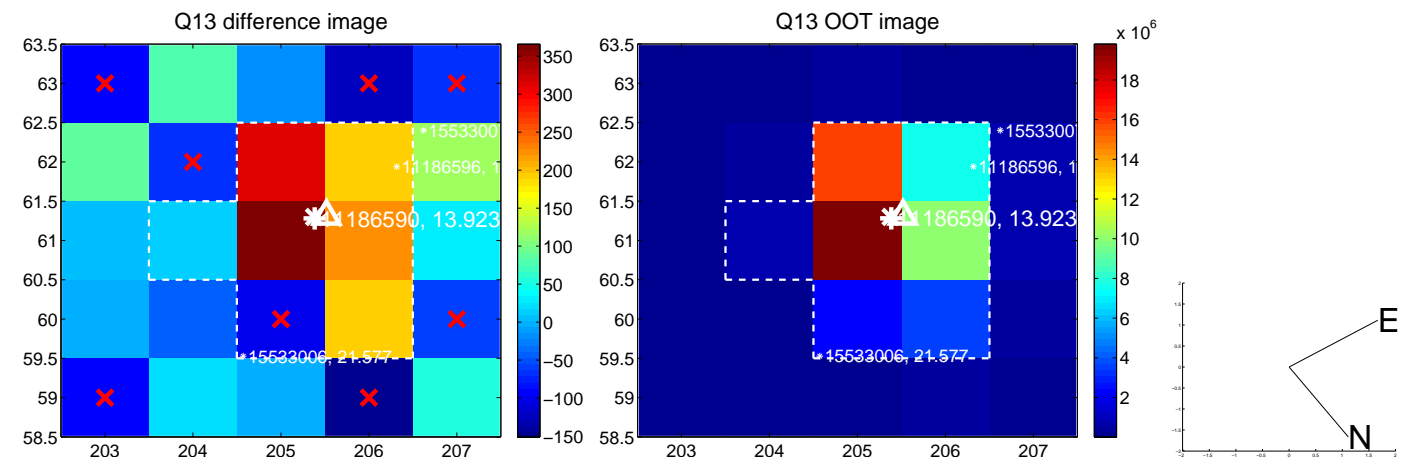
white \times : KIC target position; +: OOT centroid; \triangle : difference centroid. red \times : large negative pixel value.



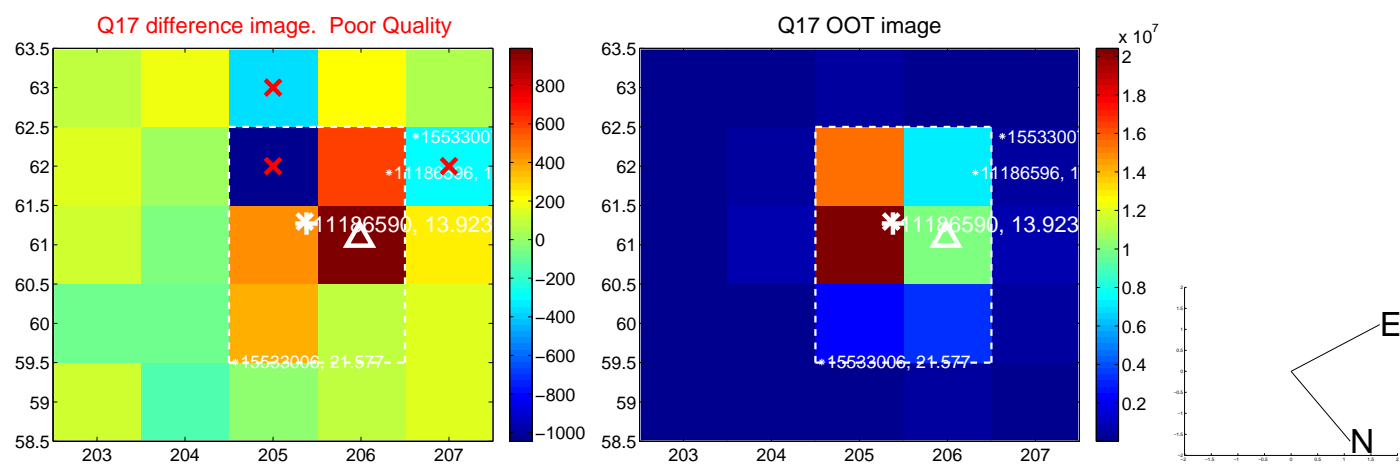
white \times : KIC target position; +: OOT centroid; \triangle : difference centroid. red \times : large negative pixel value.



white \times : KIC target position; +: OOT centroid; \triangle : difference centroid. red \times : large negative pixel value.



white \times : KIC target position; $+$: OOT centroid; \triangle : difference centroid. red \times : large negative pixel value.



folded centroid time series figure for this object.

UKIRT Image

Declination

