

KIC 011134879

Q1-17 DR25 TCE Parameters

TCE	Run Type	KOI?	Period (Days)	Epoch (BKJD)	Depth (ppm)	Duration (Hours)	MES	SNR	R_{\star} (R_{\odot})	T_{\star} (K)	R_p (R_{\oplus})	S_p (S_{\oplus})
011134879-01	OBS	0480.01	4.301664	133.595053	741.0	2.223	83.4	93.6	0.86	5480	2.73	245.38

Robovetter Results

TCE	Run Type	Disp	Score	N	S	C	E	Comments
011134879-01	OBS	PC	1.00	0	0	0	0	NO_COMMENT

Notes: OBS = Observed. INJ = Injected. INV = Inverted. SCR = Scrambled.

N = Not Transit-Like. S = Stellar Eclipse. C = Centroid Offset. E = Ephemeris Match.

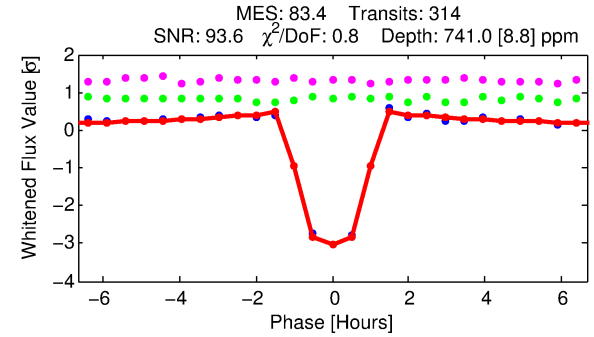
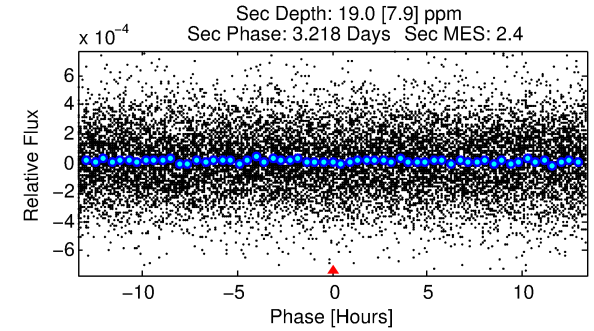
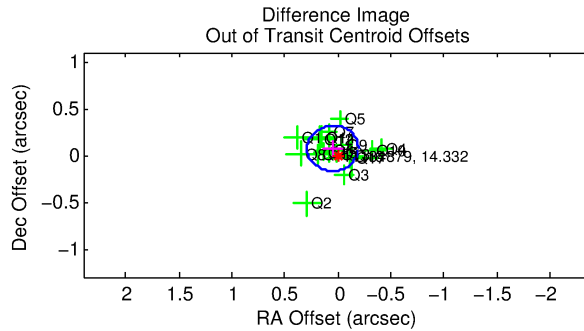
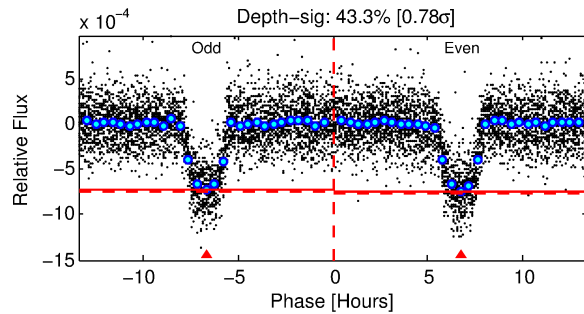
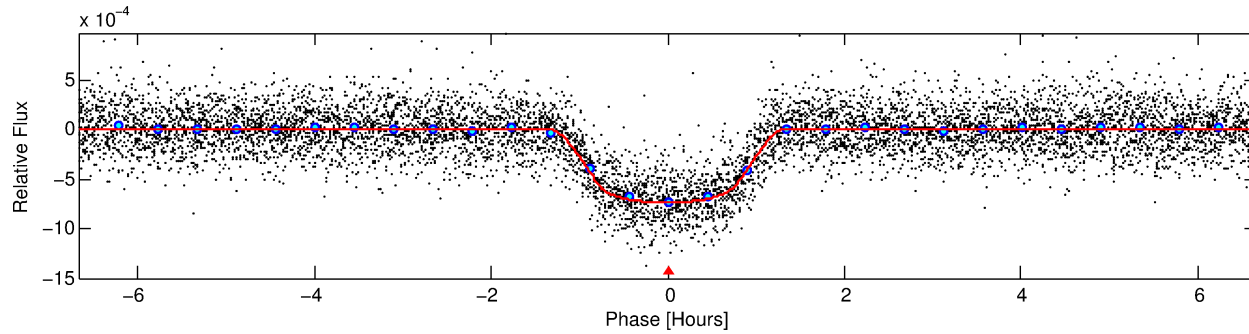
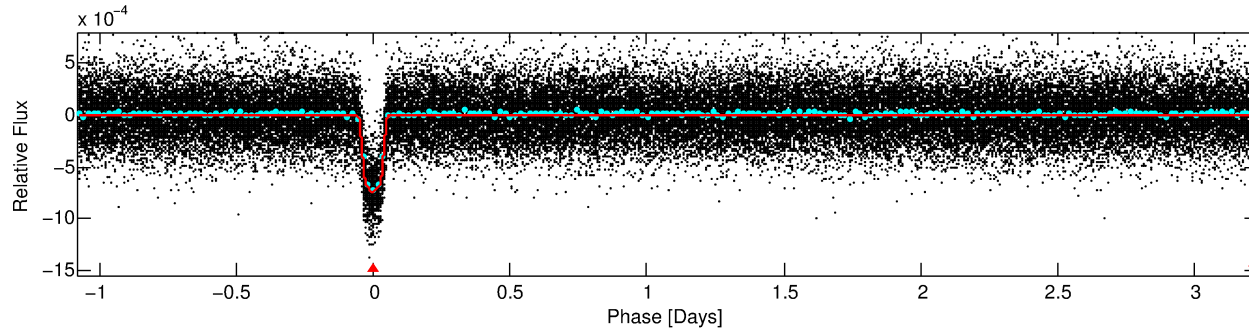
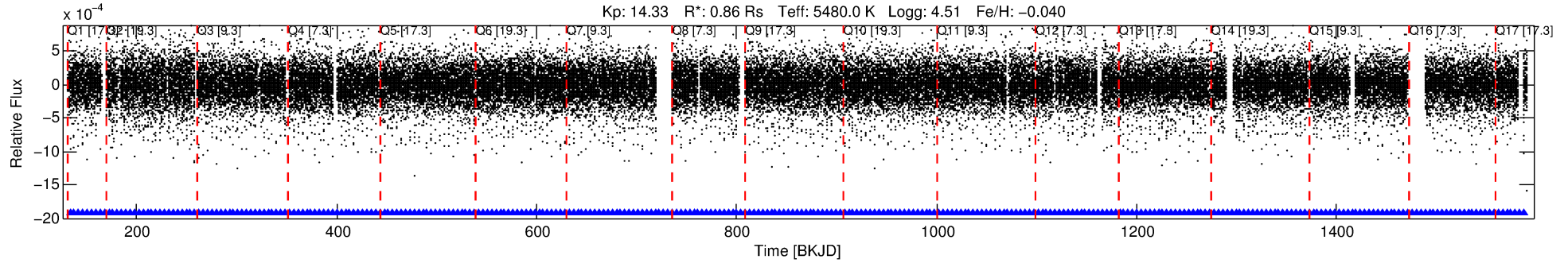
See http://exoplanetarchive.ipac.caltech.edu/docs/API_kepcandidate_columns.html#proj_disp_col for comment definitions.

Ephemeris Match Information For 011134879-01

No Significant Match Found

DV One-Page Summary

KIC: 11134879 Candidate: 1 of 1 Period: 4.302 d
KOI: K00480.01 Corr: 0.965



DV Fit Results:

Period = 4.30166 [0.00000] d
Epoch = 133.5951 [0.0004] BKJD
Rp/R* = 0.0289 [0.0018]
a/R* = 8.38 [2.09]
b = 0.86 [0.08]
Seff = 245.38 [73.01]
Teq = 1009 [75] K
Rp = 2.73 [0.65] Re
a = 0.0496 [0.0094] AU
Ag = 3.44 [1.77] [1.38 σ]
Teffp = 2126 [241] K [4.43 σ]

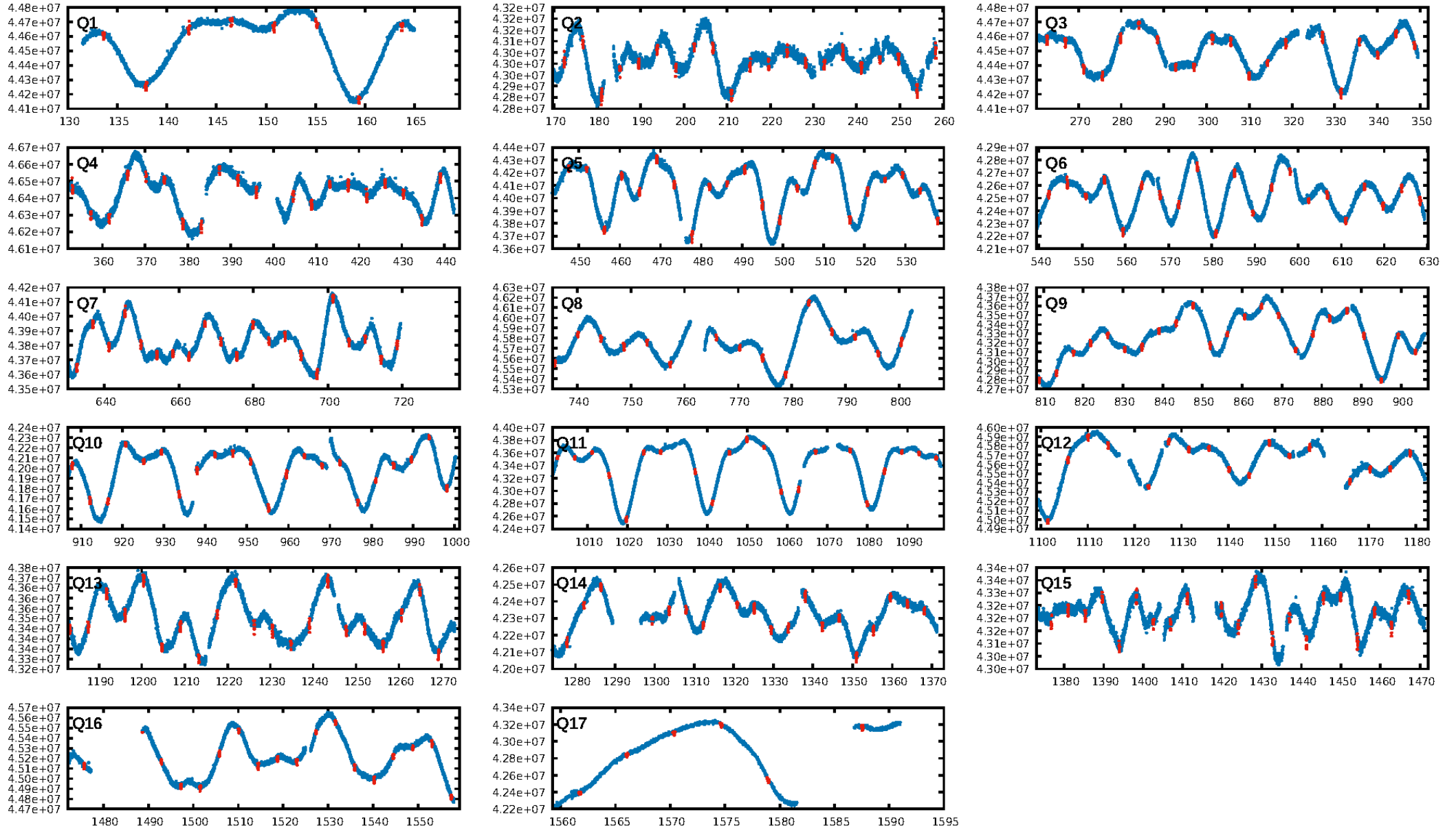
DV Diagnostic Results:

ShortPeriod-sig: N/A
LongPeriod-sig: N/A
ModelChiSquare2-sig: N/A
ModelChiSquareGof-sig: N/A
Bootstrap-pfa: 0.00e+00
RollingBand-fgt: 1.00 [300/300]
GhostDiagnostic-chr: 4.447
Centroid-sig: 83.3%
Centroid-so: 0.059 arcsec [0.52 σ]
OotOffset-rm: 0.088 arcsec [1.08 σ]
KicOffset-rm: 0.097 arcsec [1.17 σ]
OotOffset-st: 4/4/4/5 [17]
KicOffset-st: 4/4/4/5 [17]
DiffImageQuality-fgm: 1.00 [17/17]
DiffImageOverlap-fno: 1.00 [17/17]

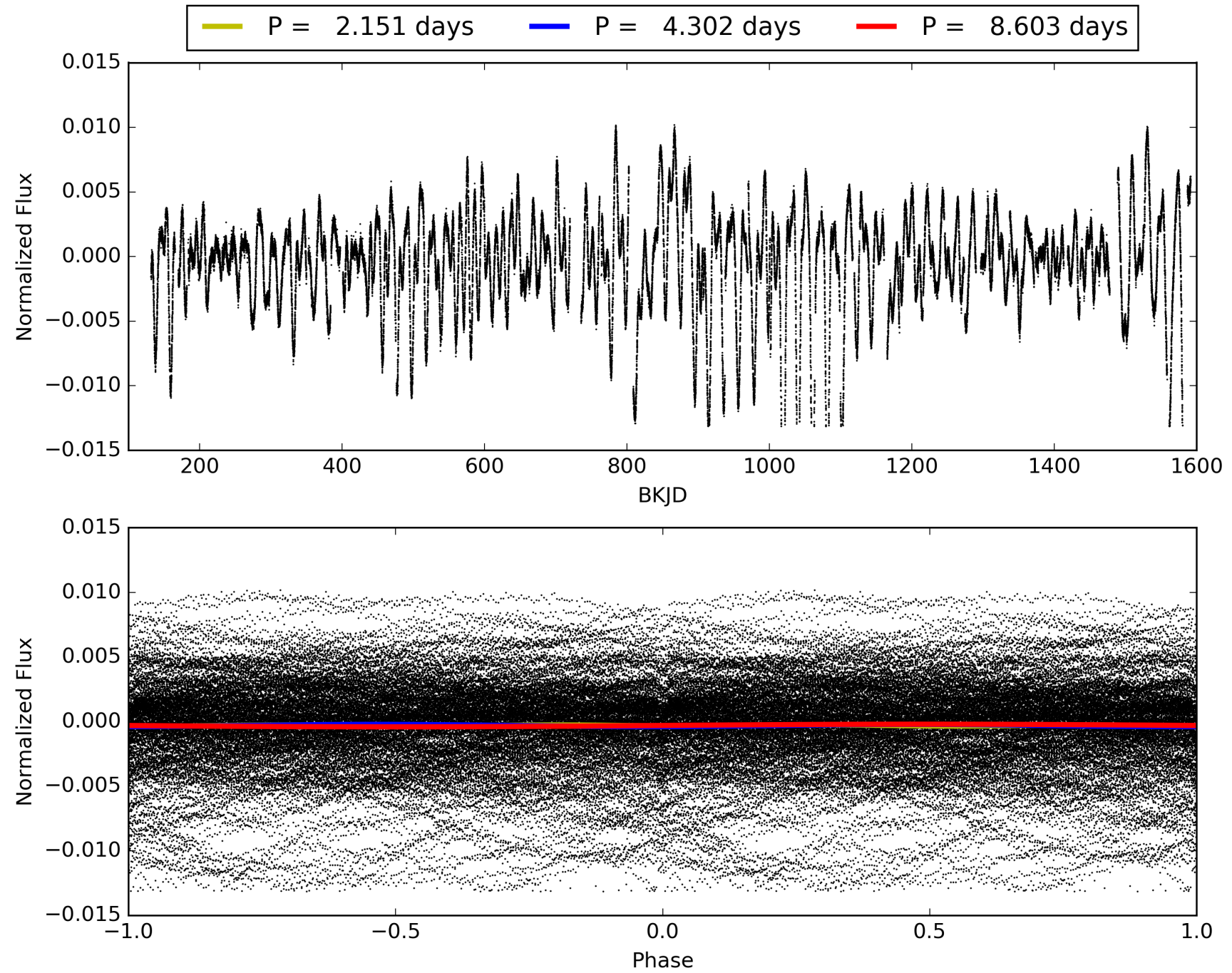
Software Revision: svn+ssh://murzim/repo/soc/tags/release/9.3.42@60958 -- Date Generated: 28-Jan-2016 23:42:10 Z

This Data Validation Report Summary was produced in the Kepler Science Operations Center Pipeline at NASA Ames Research Center

TCE 011134879-01, PDC Light Curves

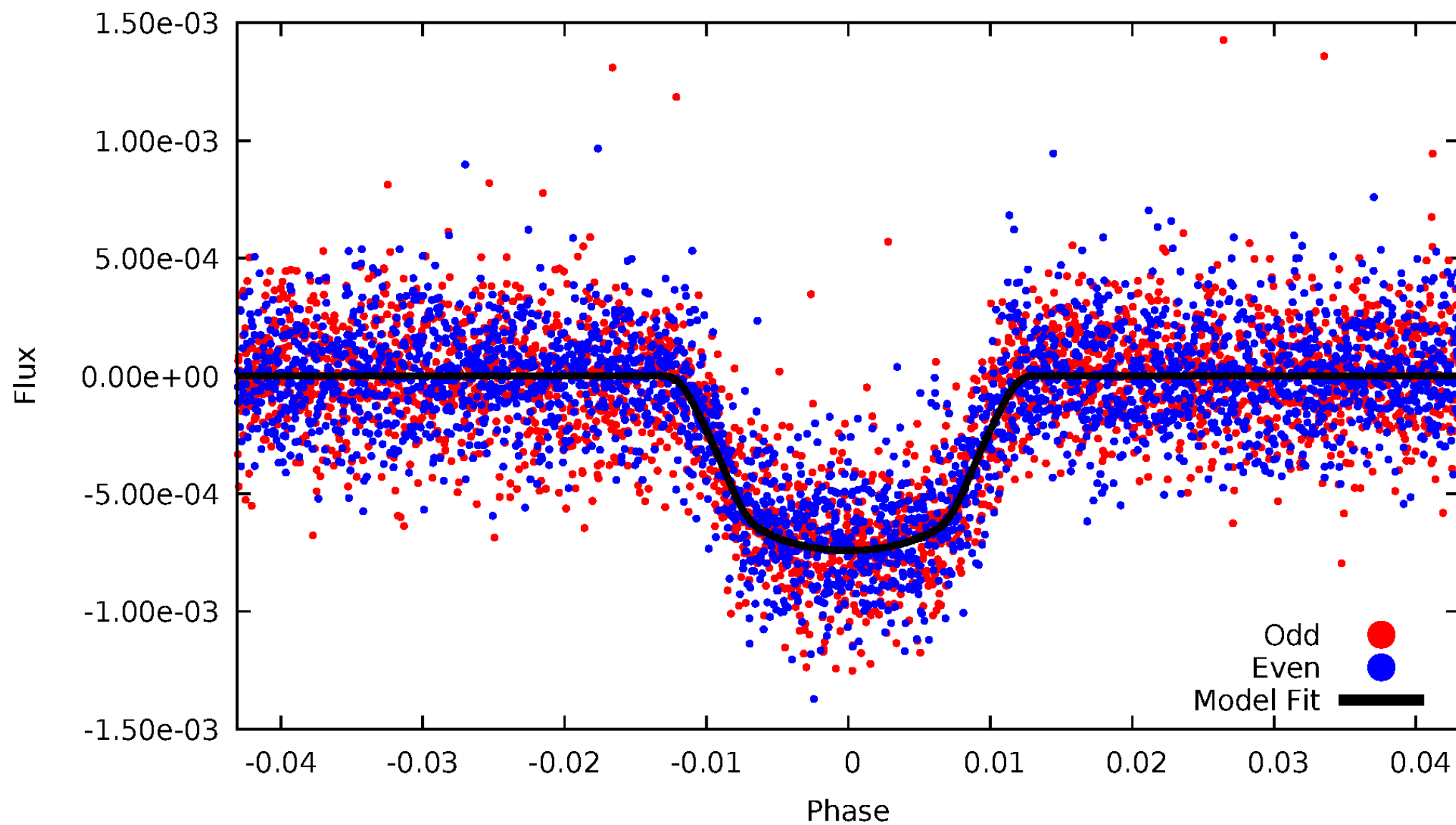


TCE 011134879-01



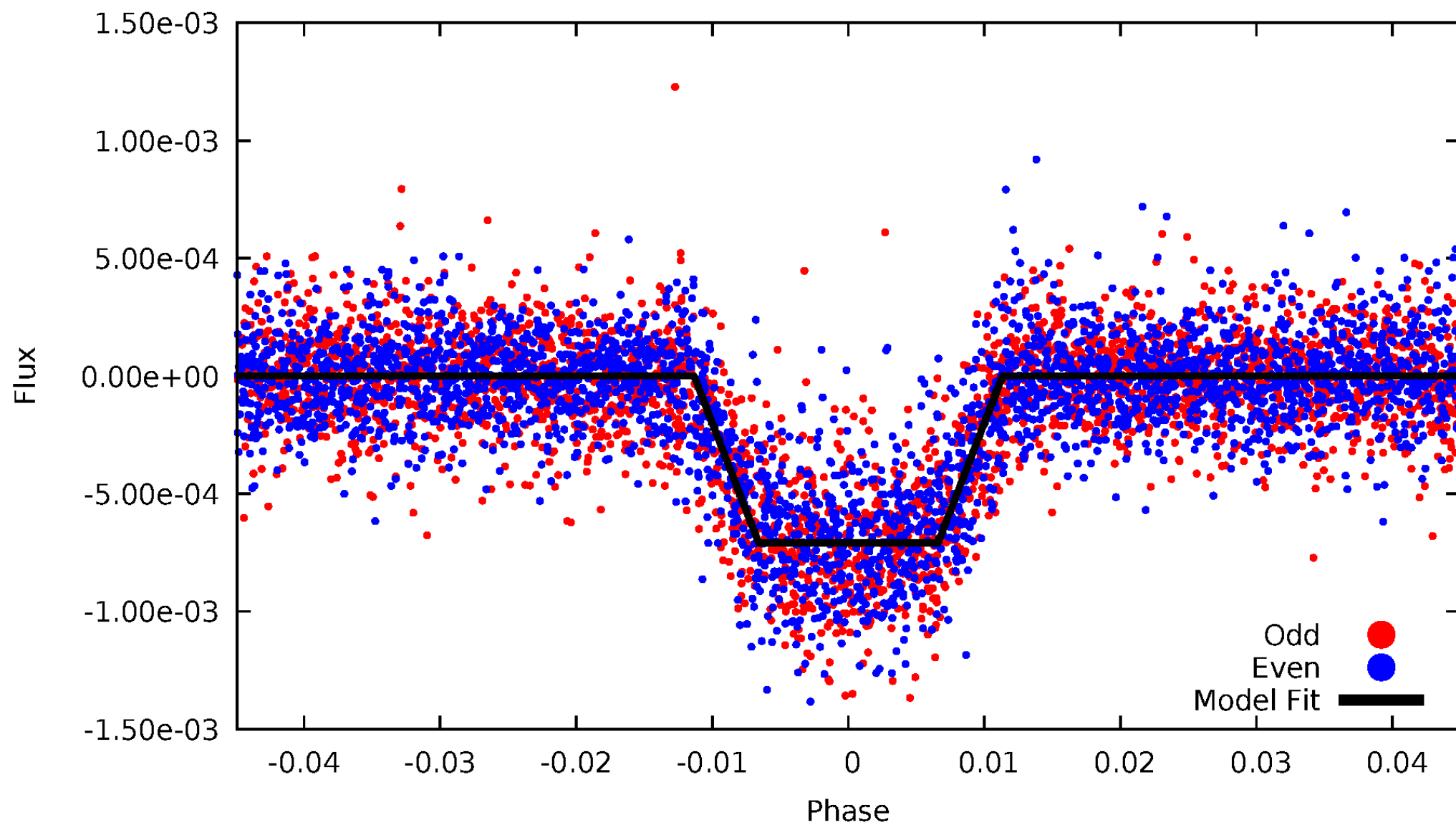
DV Odd/Even

TCE 011134879-01

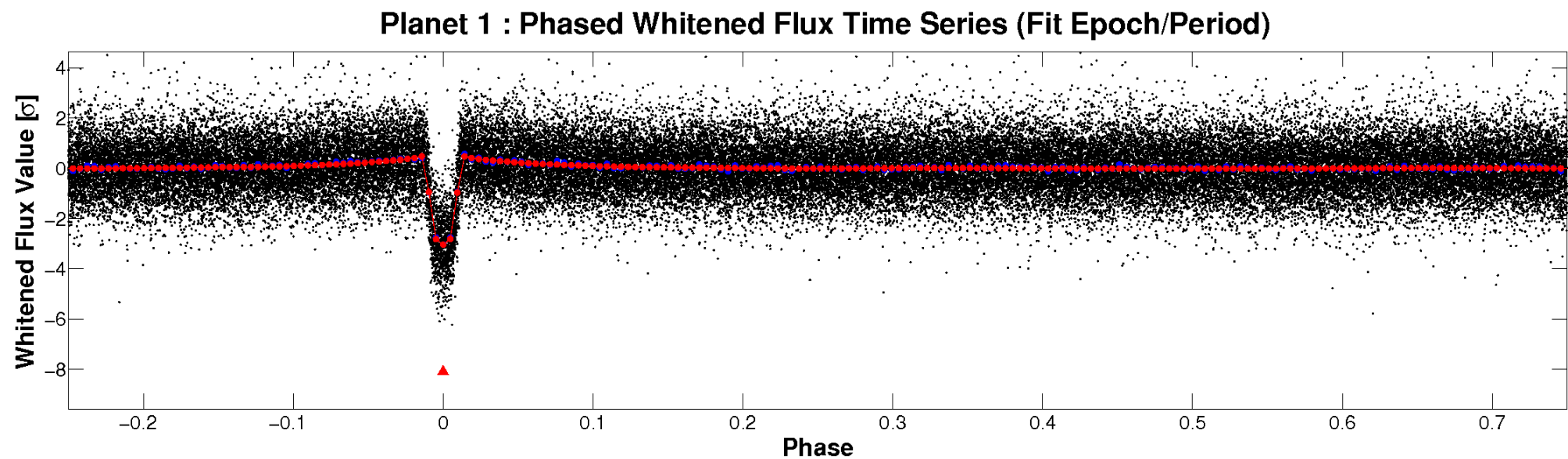
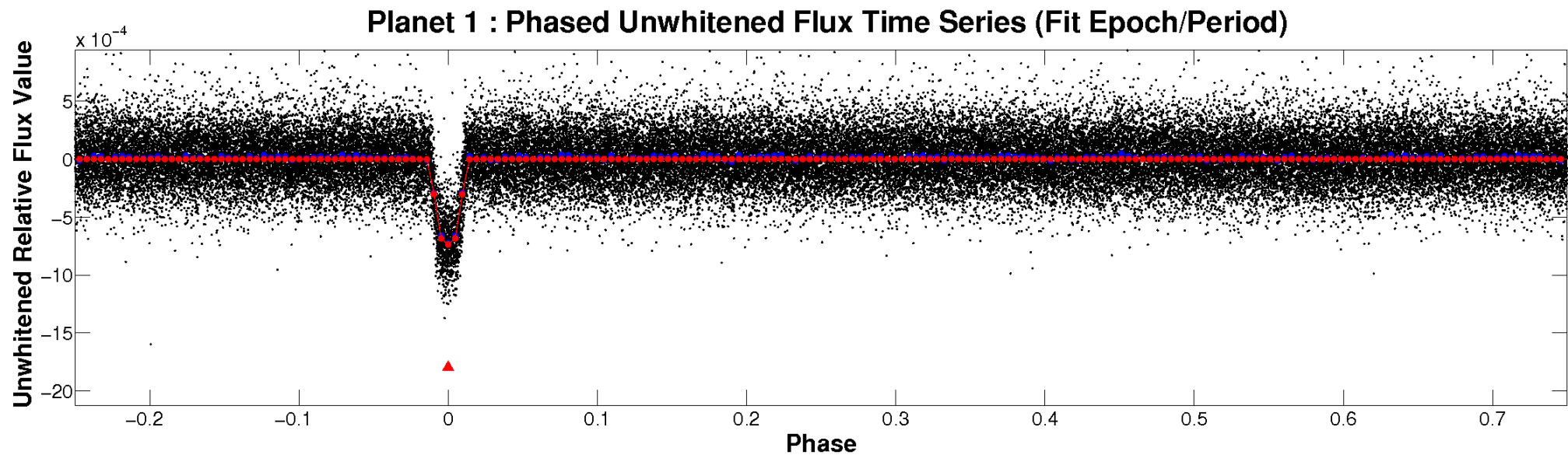


ALT Odd/Even

TCE 011134879-01

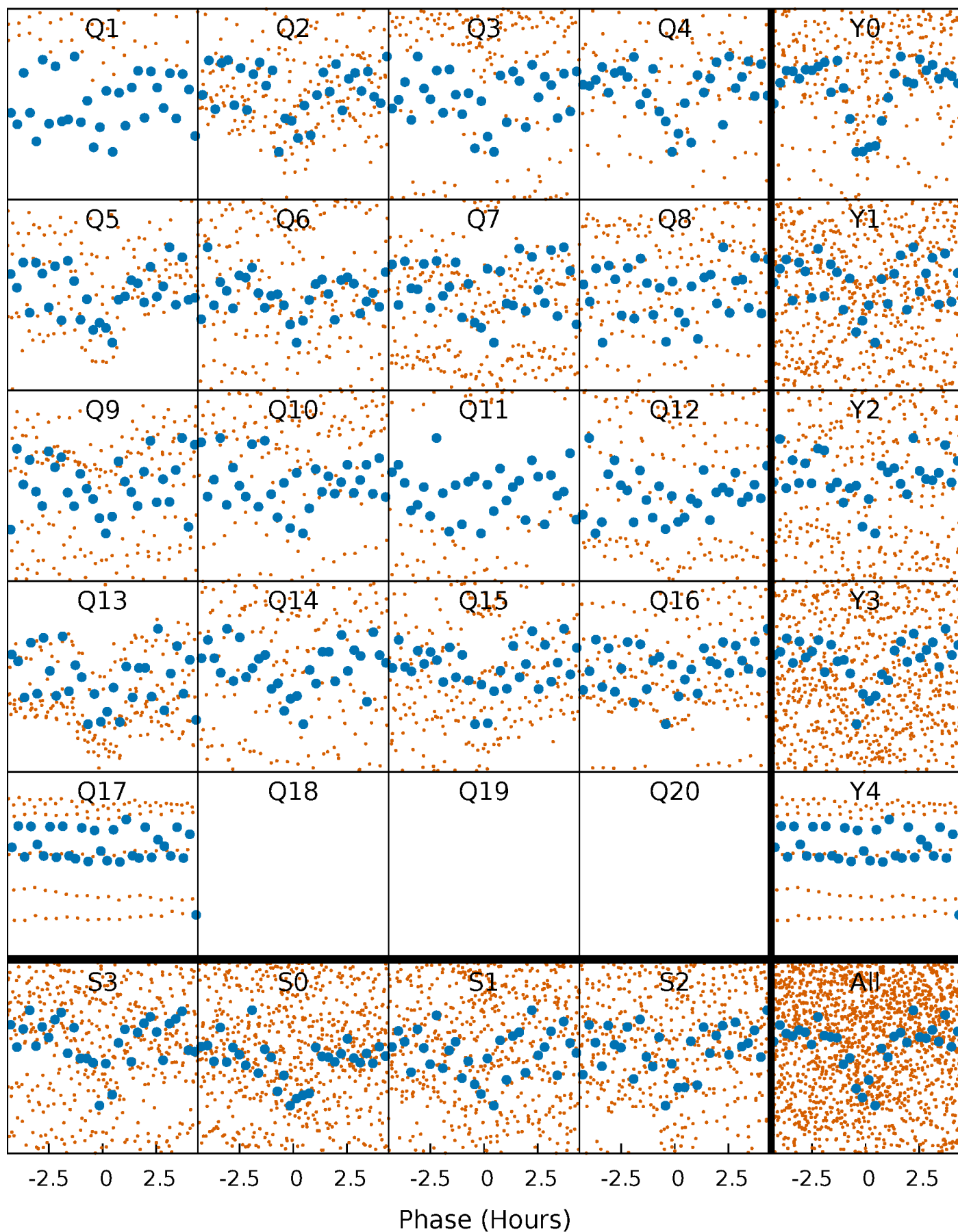


Non-Whitened Vs. Whitened Light Curve



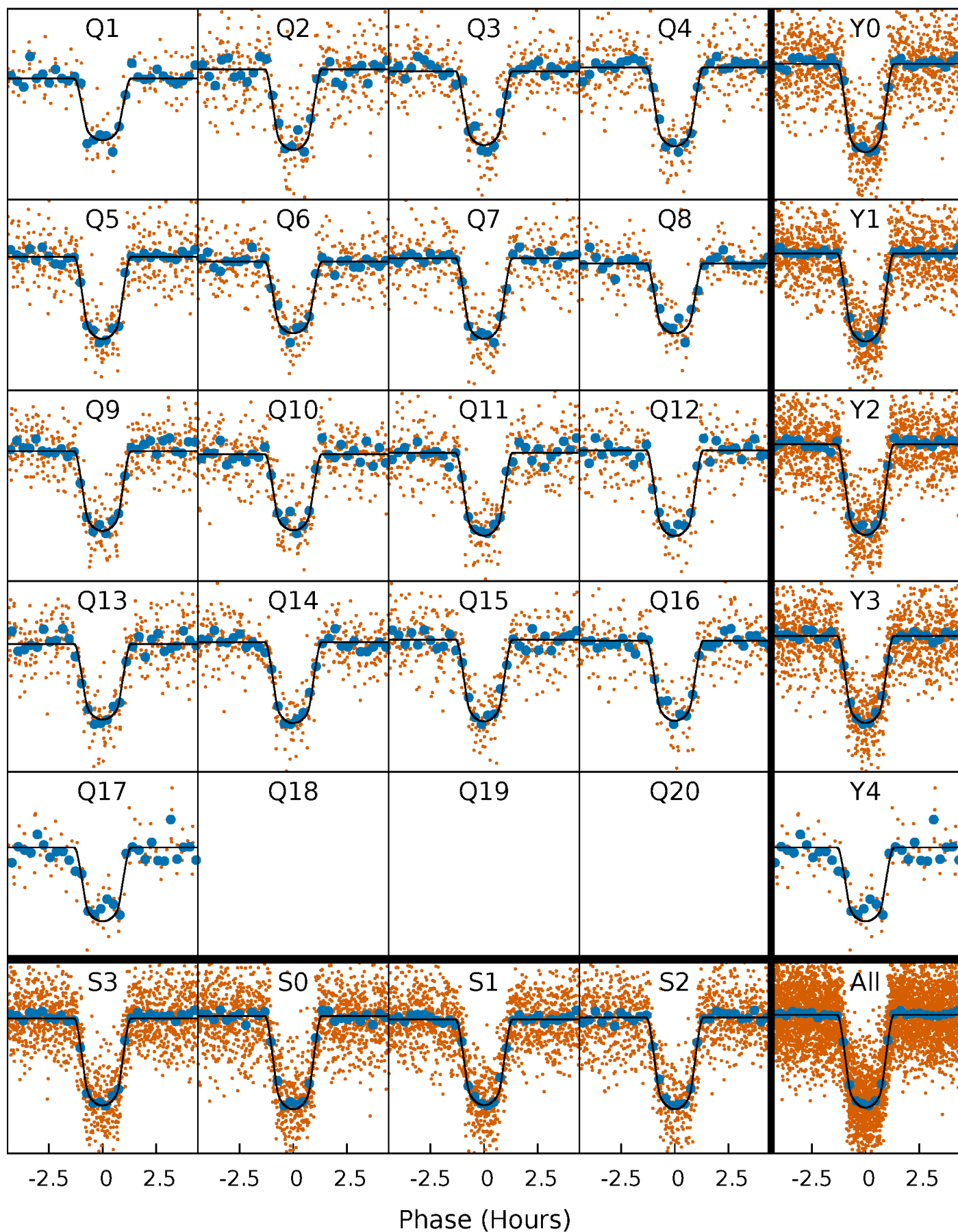
PDC Quarter-Phased Transit Curves

TCE 011134879-01 P= 4.301664 Days $T_0=133.595053$ (BKJD)



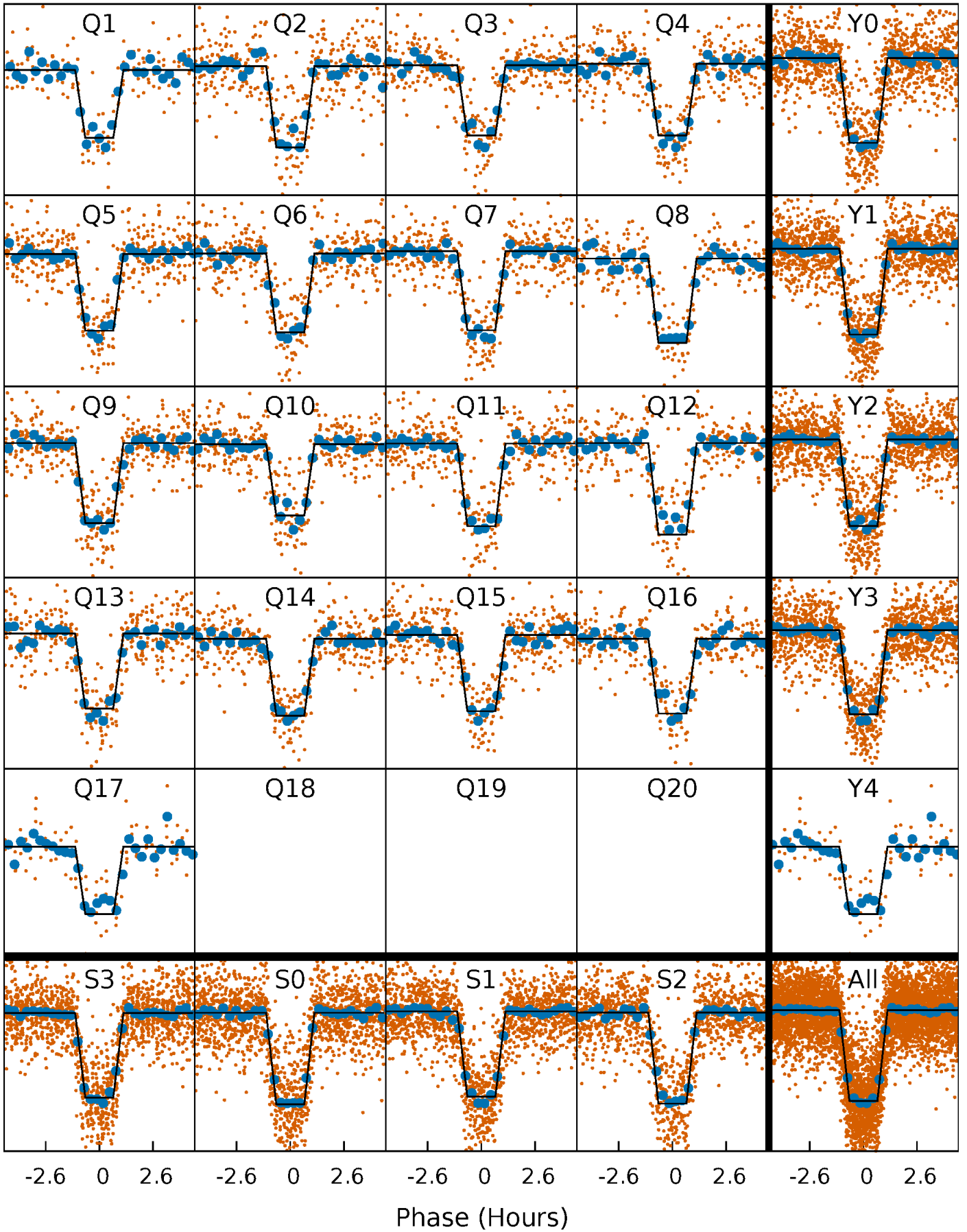
DV Quarter-Phased Transit Curves

TCE 011134879-01 P= 4.301664 Days $T_0=133.595053$ (BKJD)



Alt. Detrend Quarter-Phased Transit Curves

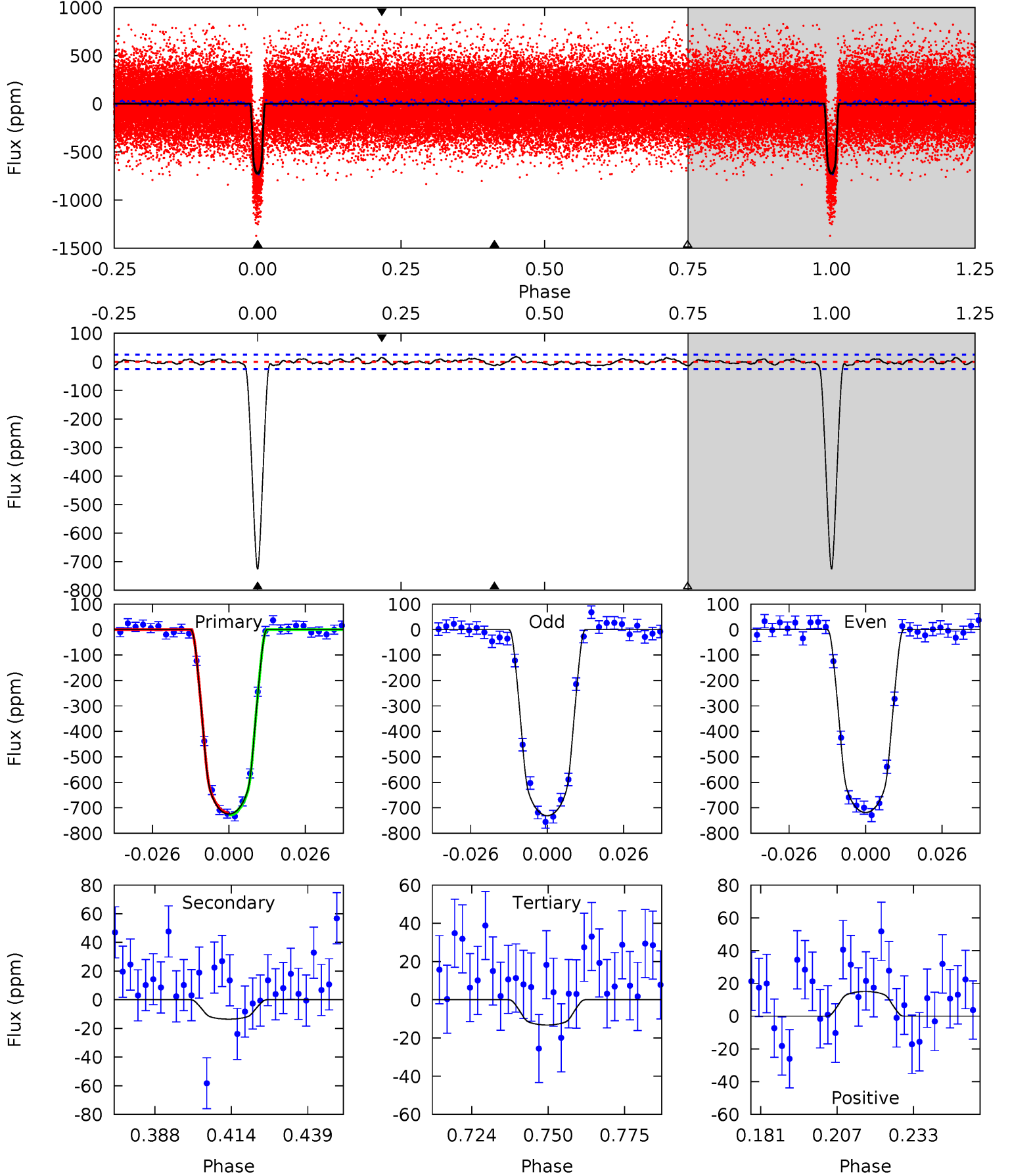
TCE 011134879-01 P= 4.301648 Days $T_0=133.597835$ (BKJD)



DV Model-Shift Uniqueness Test

011134879-01, P = 4.301664 Days, E = 129.293389 Days

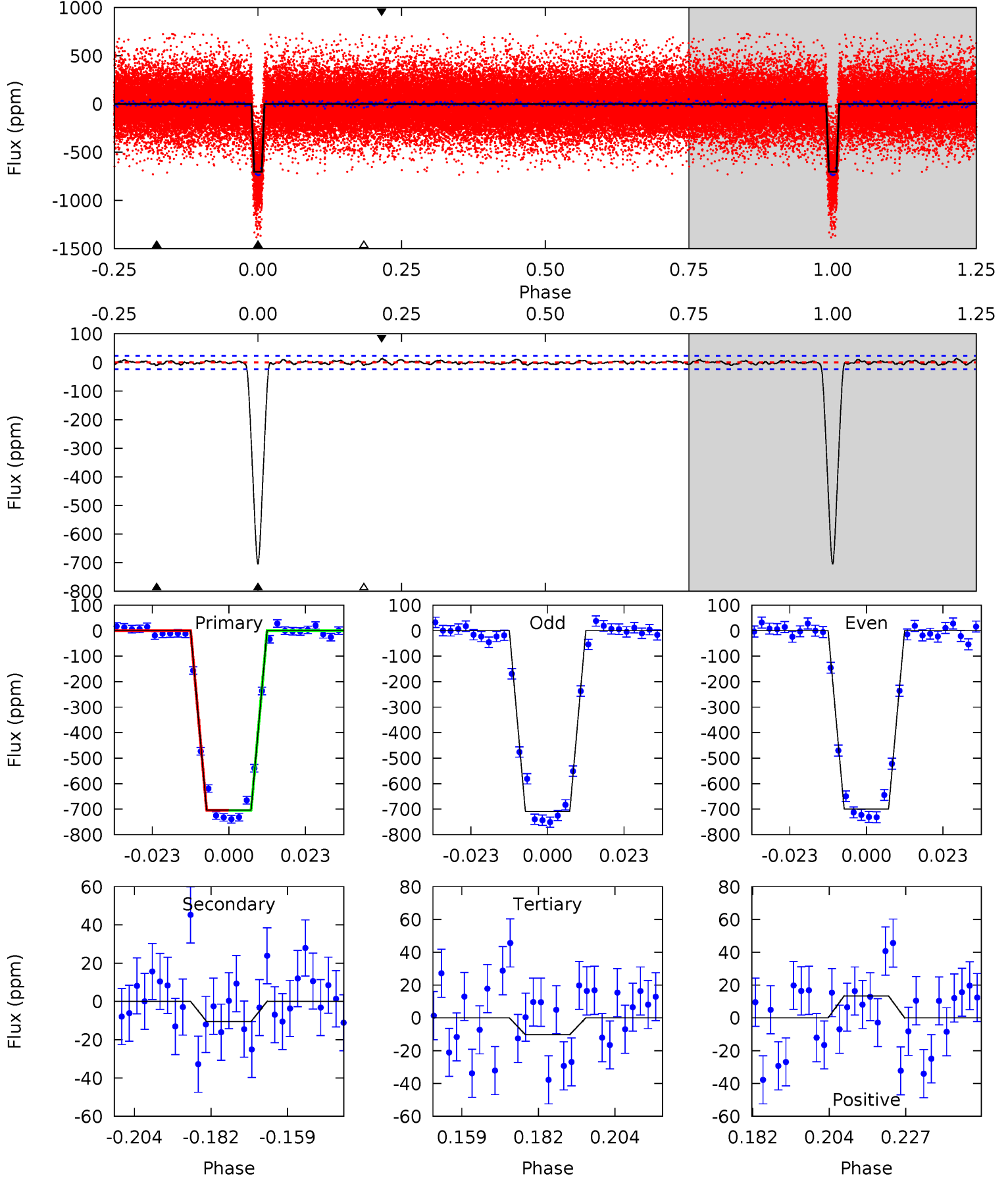
Pri	Sec	Ter	Pos	FA ₁	FA ₂	F _{Red}	Pri-Ter	Pri-Pos	Sec-Ter	Sec-Pos	Odd-Evn	DMM	Shape	TAT
141.5	2.64	2.58	2.94	4.84	2.23	1.30	138.9	138.5	0.06	-0.29	1.19	0.99	0.02	0.77



Alt Model-Shift Uniqueness Test

011134879-01, P = 4.301648 Days, E = 129.296187 Days

Pri	Sec	Ter	Pos	FA ₁	FA ₂	F _{Red}	Pri-Ter	Pri-Pos	Sec-Ter	Sec-Pos	Odd-Evn	DMM	Shape	TAT
147.0	2.19	2.13	2.79	4.87	2.28	0.86	144.9	144.2	0.06	-0.60	0.97	0.99	0.02	0.11



Stellar Parameters For KIC 011134879

	$T_{\text{eff}}(K)$	$\log(g)$	[Fe/H]	$R (R_{\odot})$	$M(M_{\odot})$	$p_{\star} (\text{g}\cdot\text{cm}^{-3})$
	5480^{+164}_{-147}	$4.509^{+0.063}_{-0.147}$	$-0.040^{+0.300}_{-0.300}$	$0.865^{+0.198}_{-0.085}$	$0.881^{+0.091}_{-0.082}$	$1.915^{+0.594}_{-0.794}$
	+3%/-3%	+1%/-3%	+750%/-750%	+23%/-10%	+10%/-9%	+31%/-41%
Source	PHO1	KIC0	KIC0	DSEP		

KIC = Kepler Input Catalog; PHO = Photometry; SPE = Spectroscopy; AST = Asteroseismology
 TRA = Transits; DESP = Dartmouth Models; MULT = Multiple Models

Secondary Eclipse Parameters for KIC 011134879-01 / KOI 0480.01

Detrend	Depth (ppm)	$R_p (R_{\oplus})$	$T_{max} (K)$	$T_{obs} (K)$	A_{obs}
DV	-14 ± 5	$2.77^{+0.34}_{-0.24}$	1431^{+76}_{-63}	2683^{+148}_{-187}	$2.356^{+1.108}_{-0.925}$
Alt.	-10 ± 5	$2.56^{+0.34}_{-0.25}$	1430^{+82}_{-60}	2647^{+163}_{-255}	$2.177^{+1.088}_{-1.039}$

T_{max} = Theoretical Maximum Planetary Temperature

T_{obs} = Observed Planetary Temperature (Assuming $A=0.3$)

A_{obs} = Observed Albedo (Assuming $T=0$)

If a secondary eclipse is present, the system is likely an EB if $T_{obs} \gg T_{max}$ AND $A_{obs} \gg 1.0$

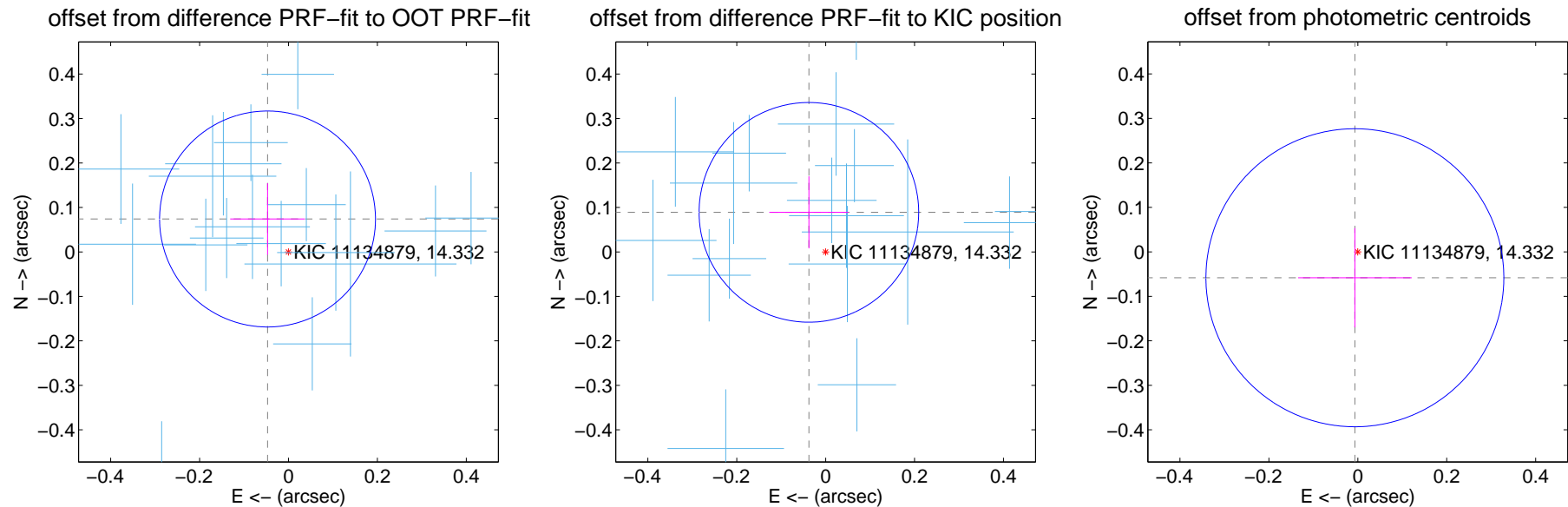
DV Centroid Data

Supplemental centroid analysis for 011134879-01. Kepler magnitude: 14.33. Transit SNR 93.64

There are 17 quarters with good PRF difference image offsets

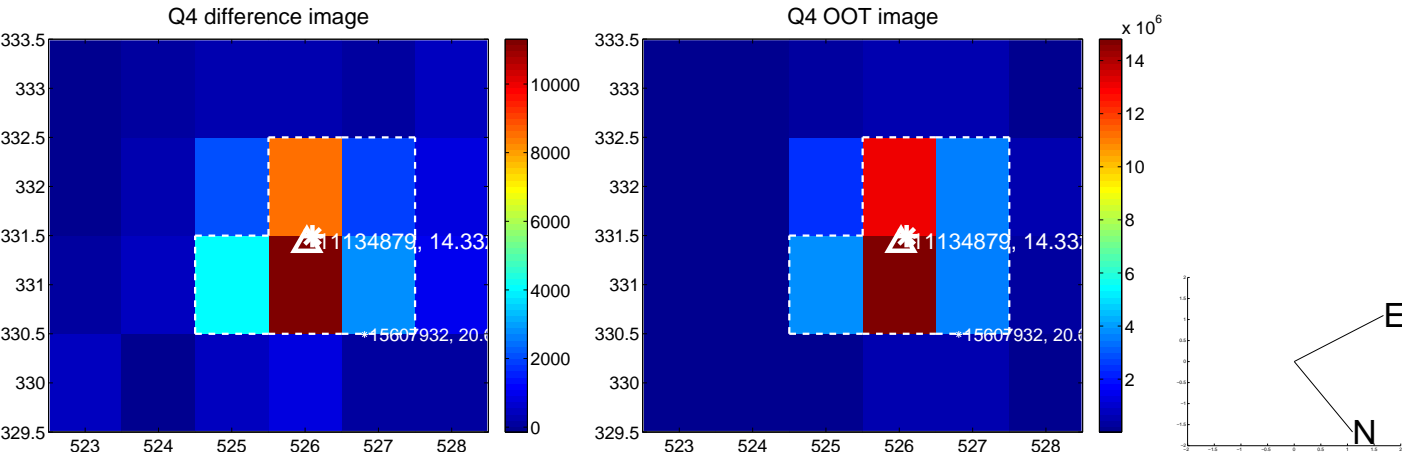
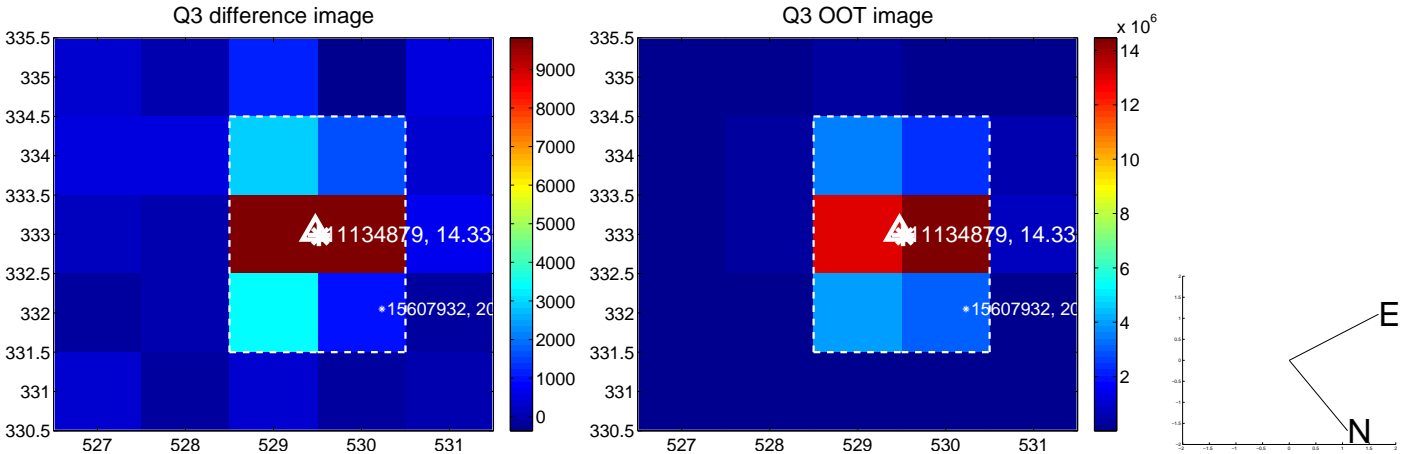
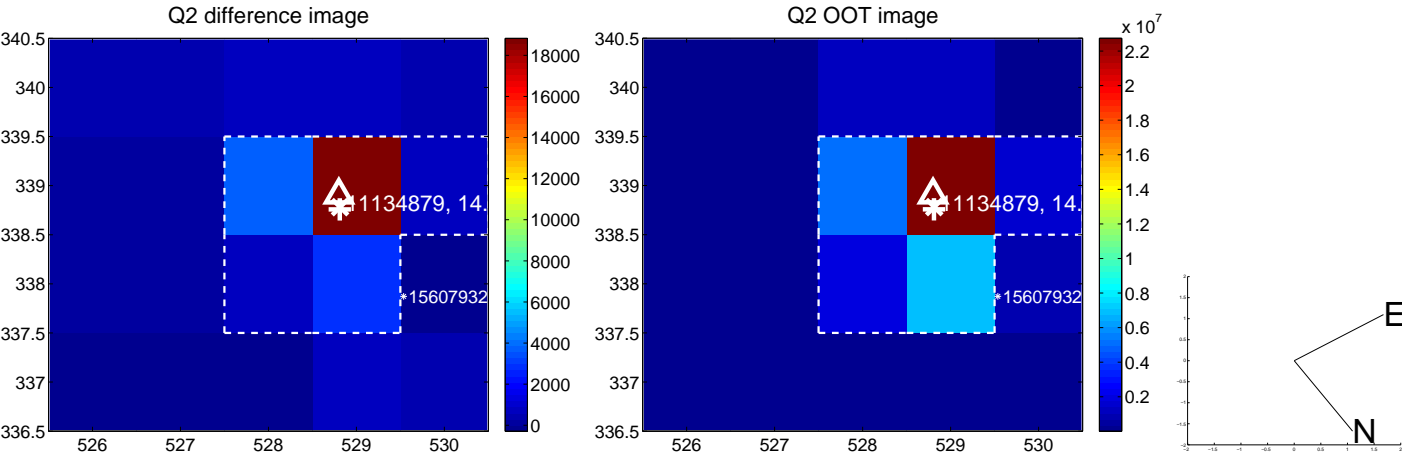
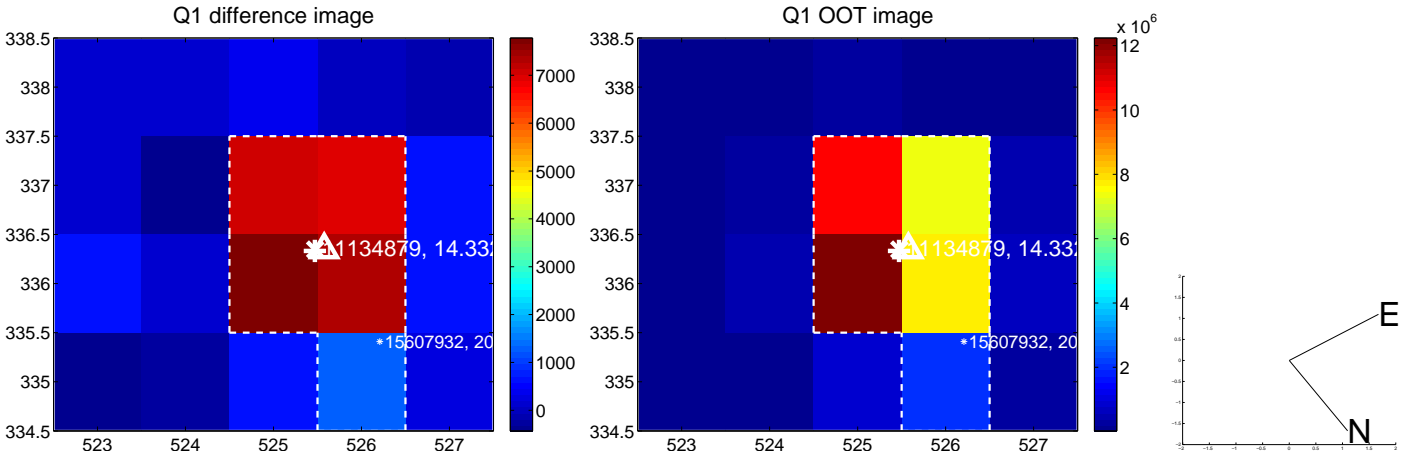
The direct PRF centroid is offset from the target star catalog position by about 0.08 arcsec

	Distance in arcsec	Distance / σ	Δ RA	Δ Dec
PRF-fit source offset from OOT	0.088 ± 0.081	1.08	0.047 ± 0.084	0.074 ± 0.080
PRF-fit source offset from KIC position	0.097 ± 0.082	1.17	0.038 ± 0.089	0.089 ± 0.081
photometric centroid source offset	0.06 ± 0.11	0.52	0.01 ± 0.13	-0.06 ± 0.11

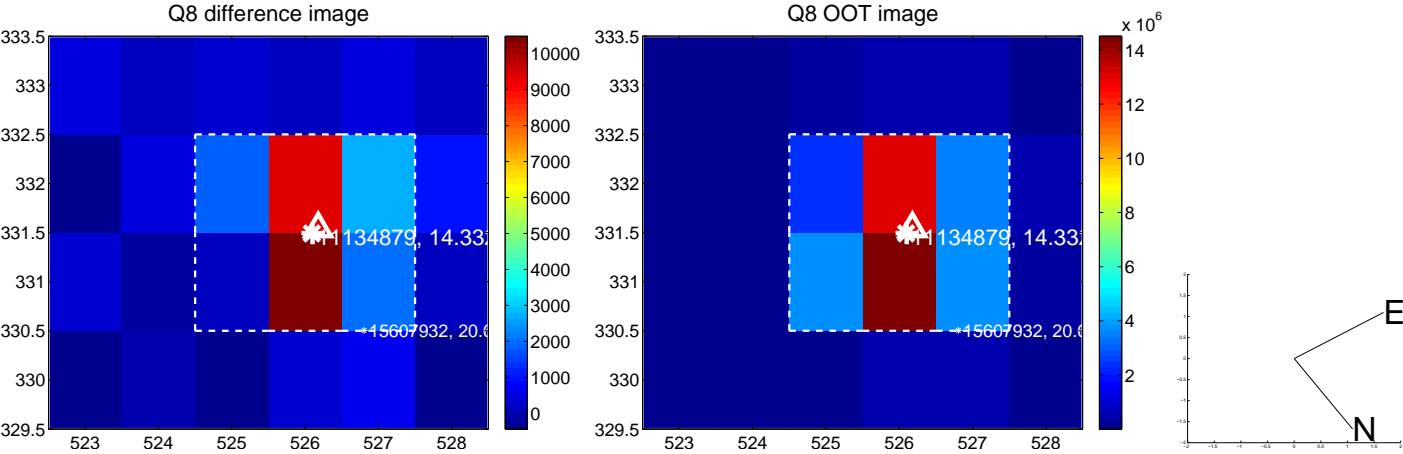
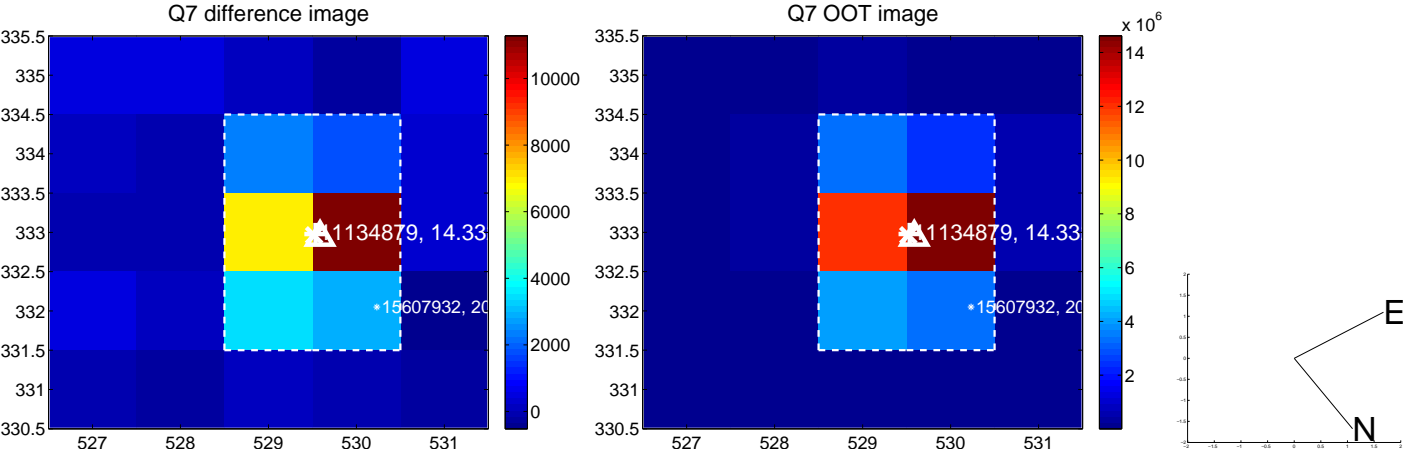
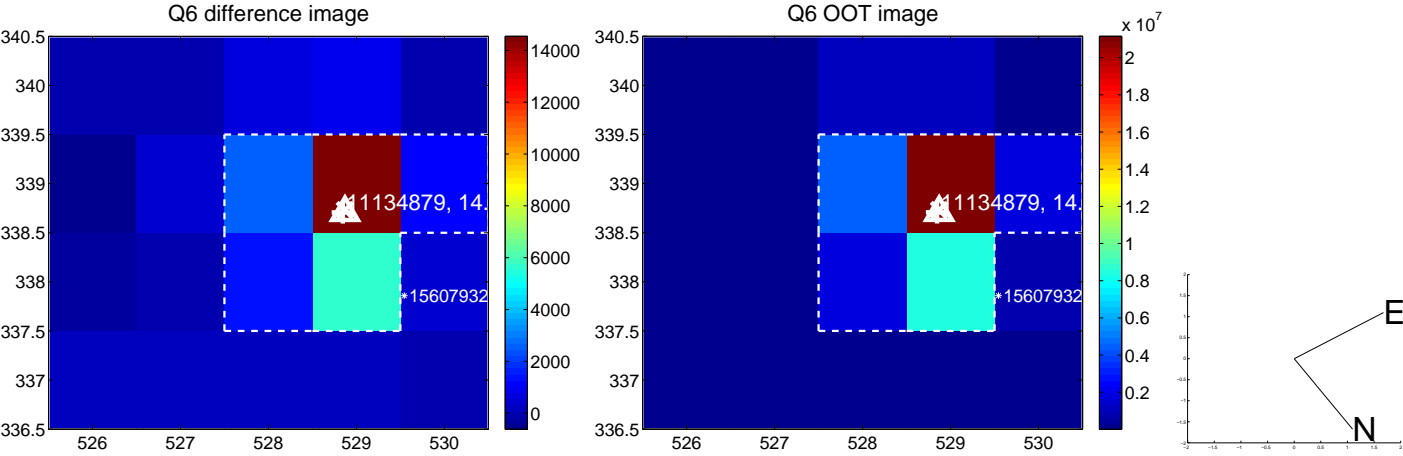
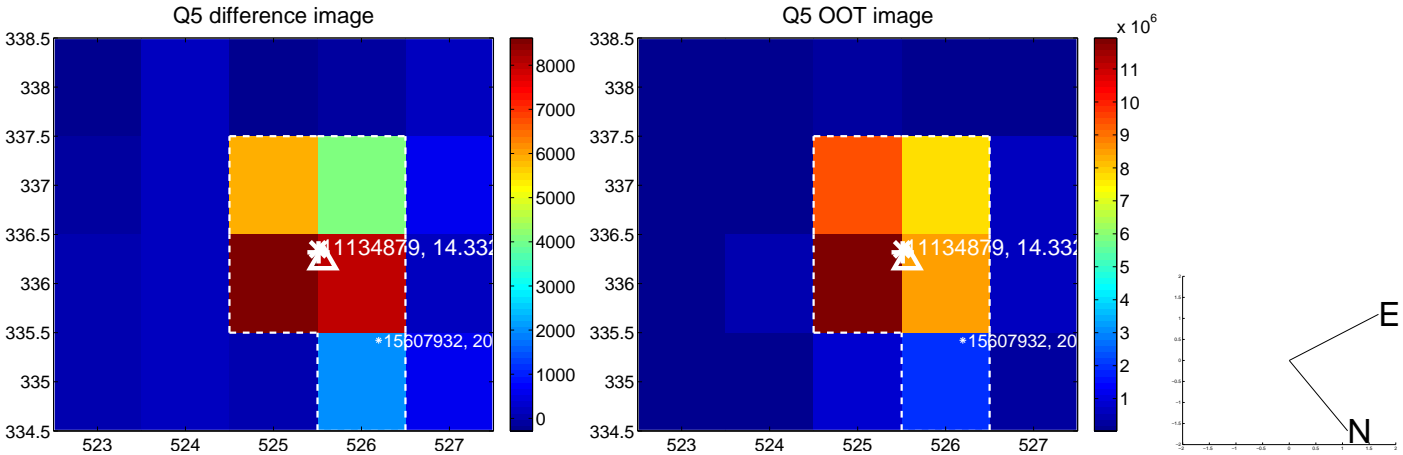


Centroid source offsets from the target star reconstructed from PRF and photometric centroids. **Sky blue crosses:** good quarterly centroid offsets; **Vermillion crosses:** bad quarterly centroid offsets; magenta cross: average over quarters. Length of the crosses: one- σ uncertainty. Blue circle: three- σ . Red *: target star. Blue *: Other stars. Text next to a star gives its KIC ID and kepmag. KIC IDs > 15,000,000 are from the UKIRT catalog.

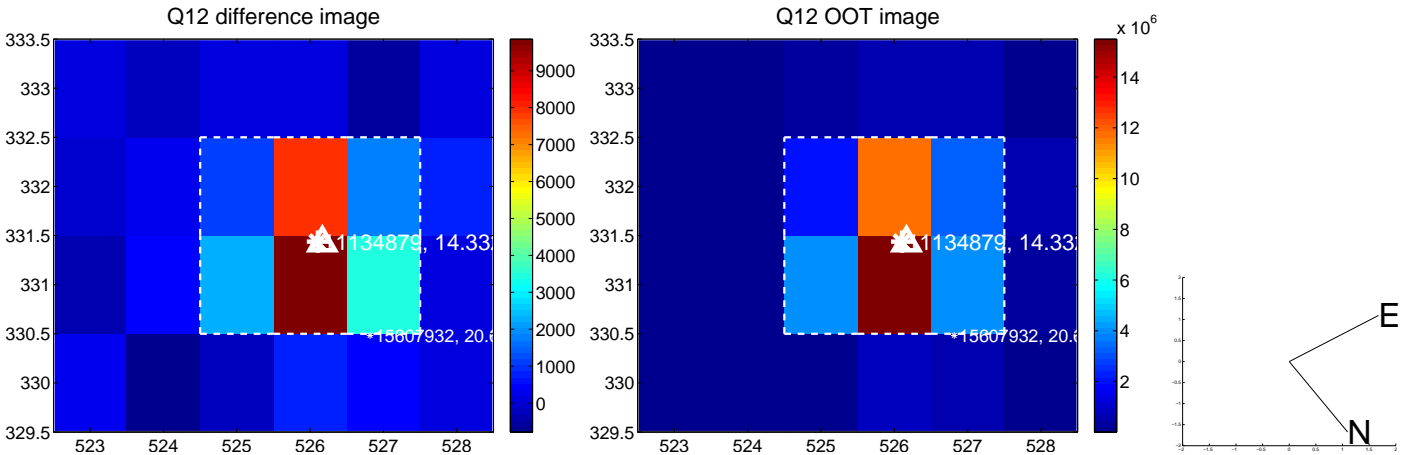
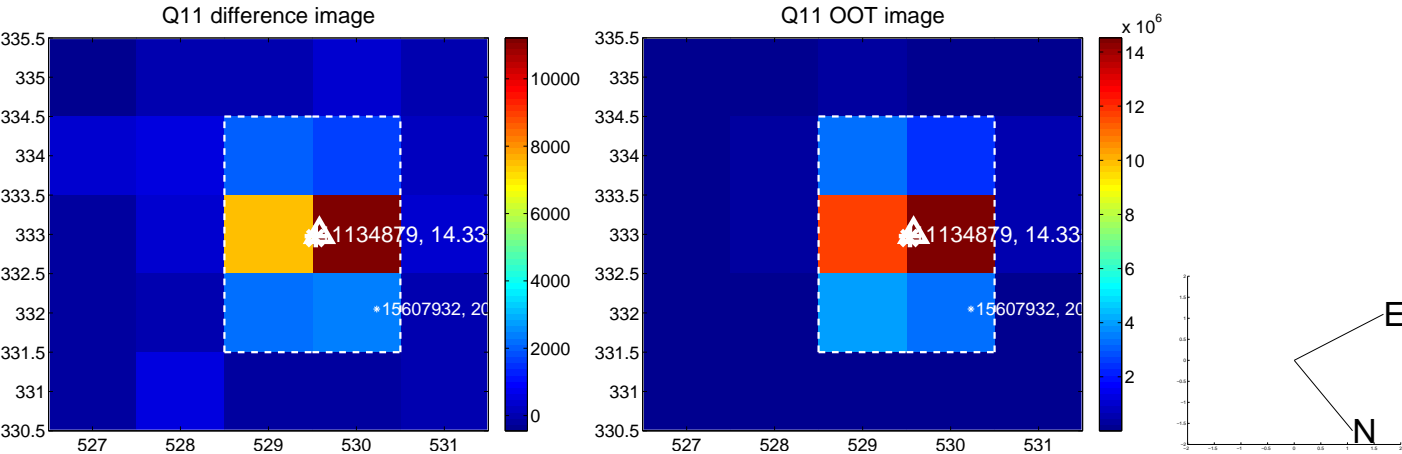
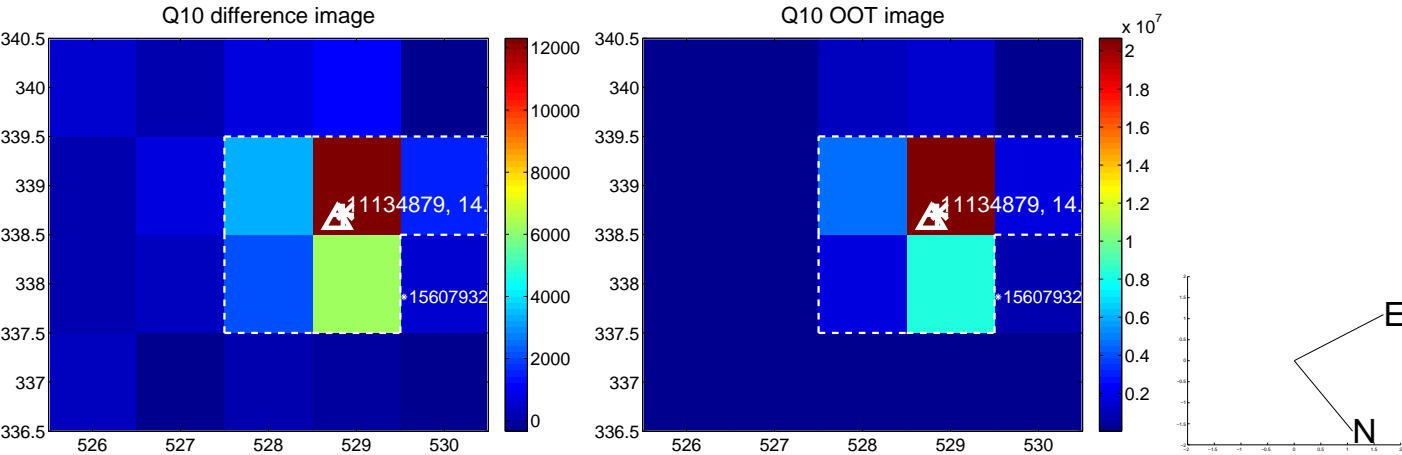
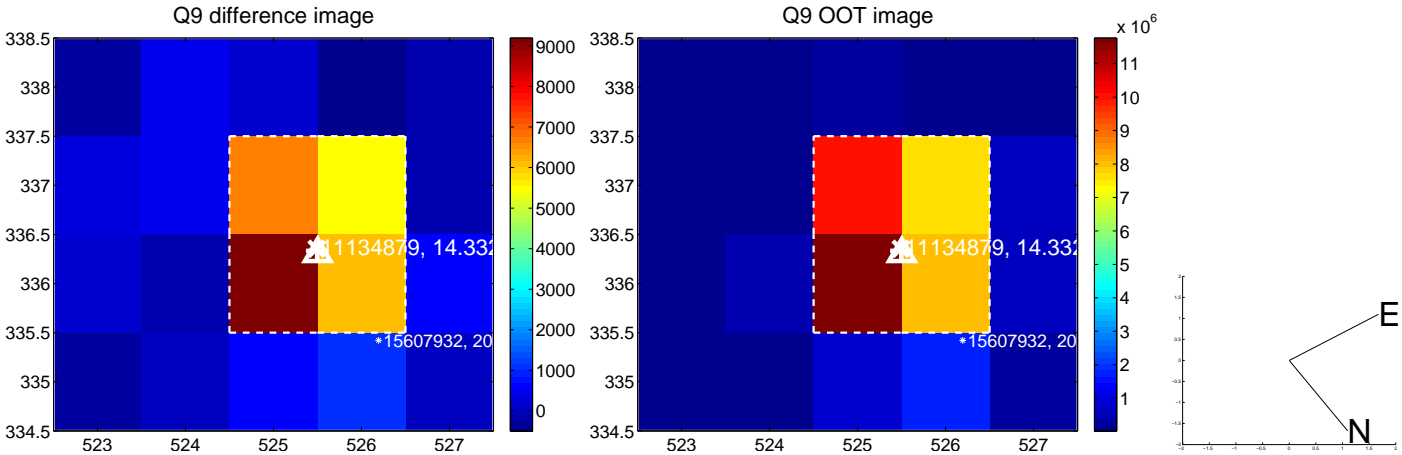
white \times : KIC target position; +: OOT centroid; \triangle : difference centroid. red \times : large negative pixel value.



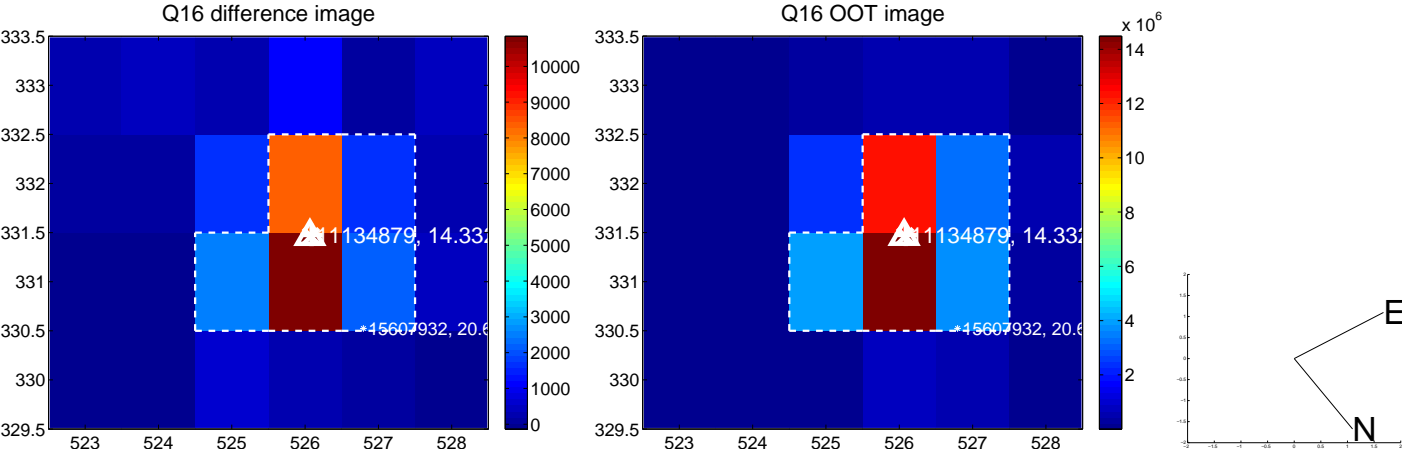
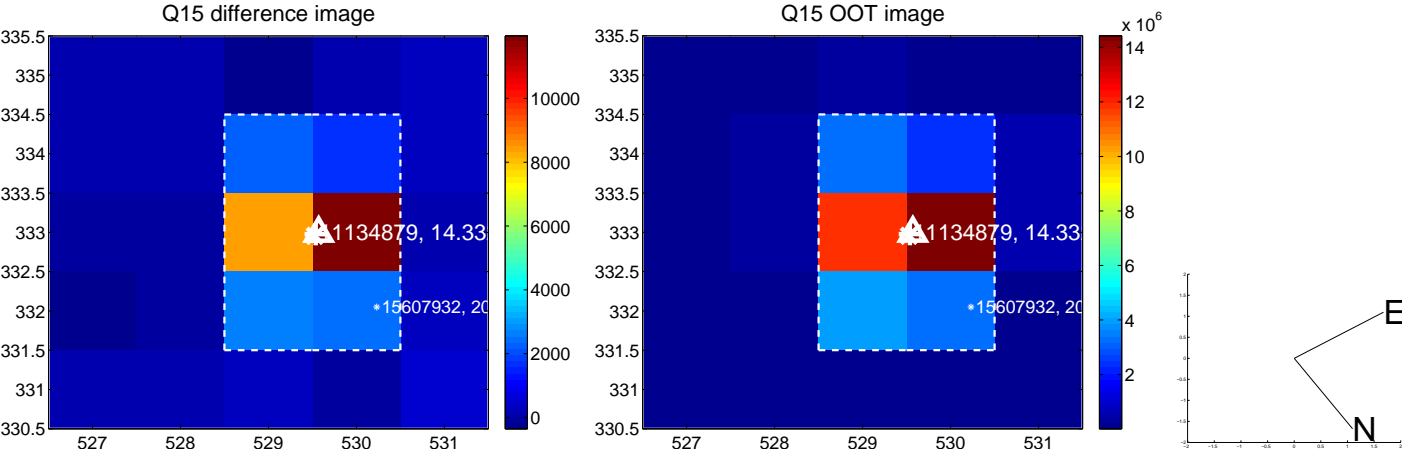
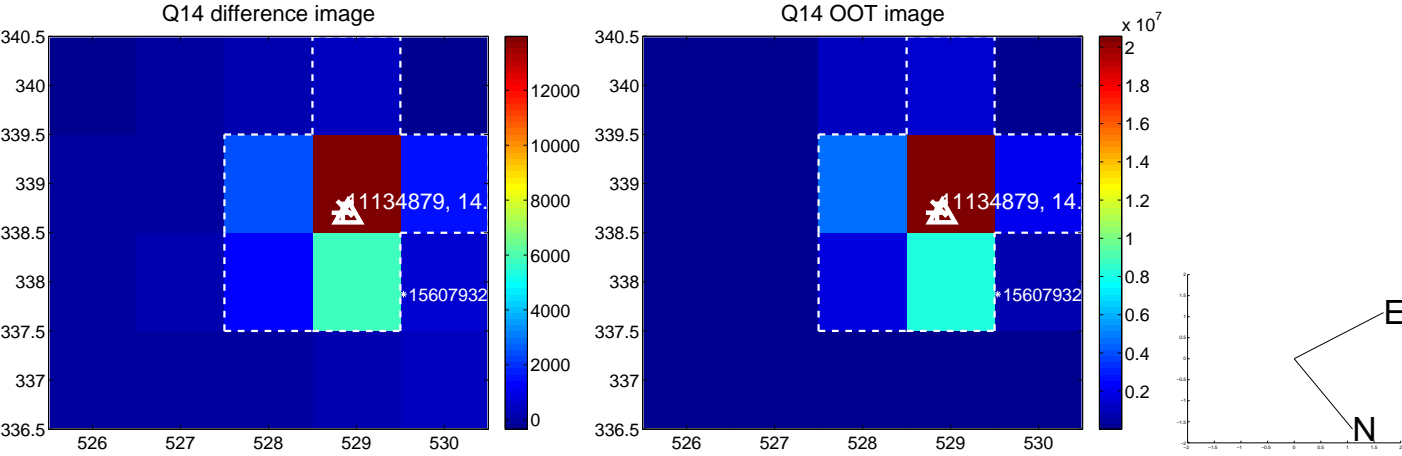
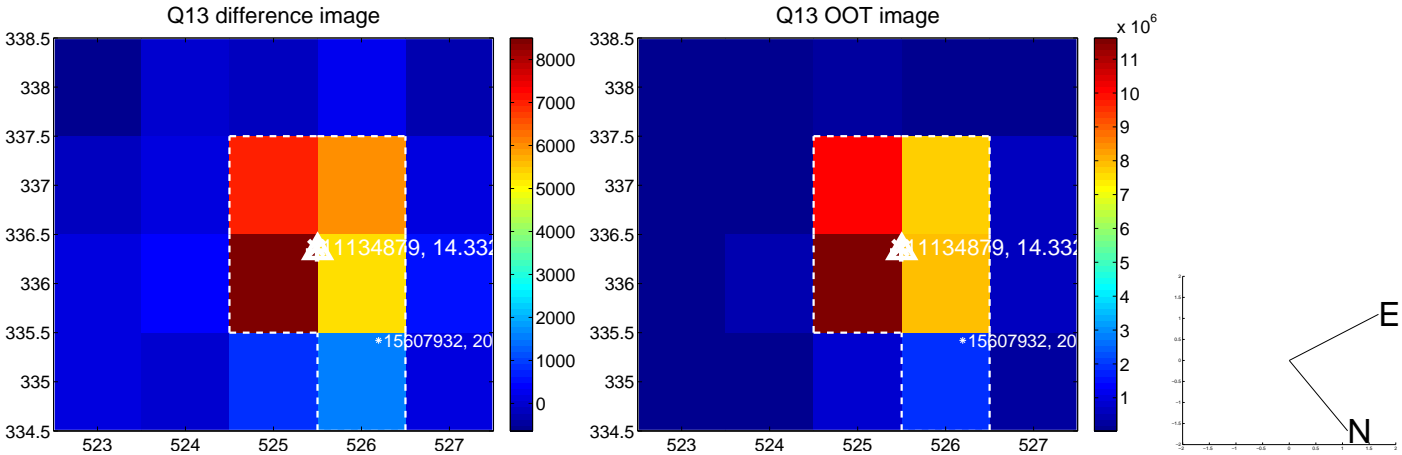
white \times : KIC target position; +: OOT centroid; \triangle : difference centroid. red \times : large negative pixel value.



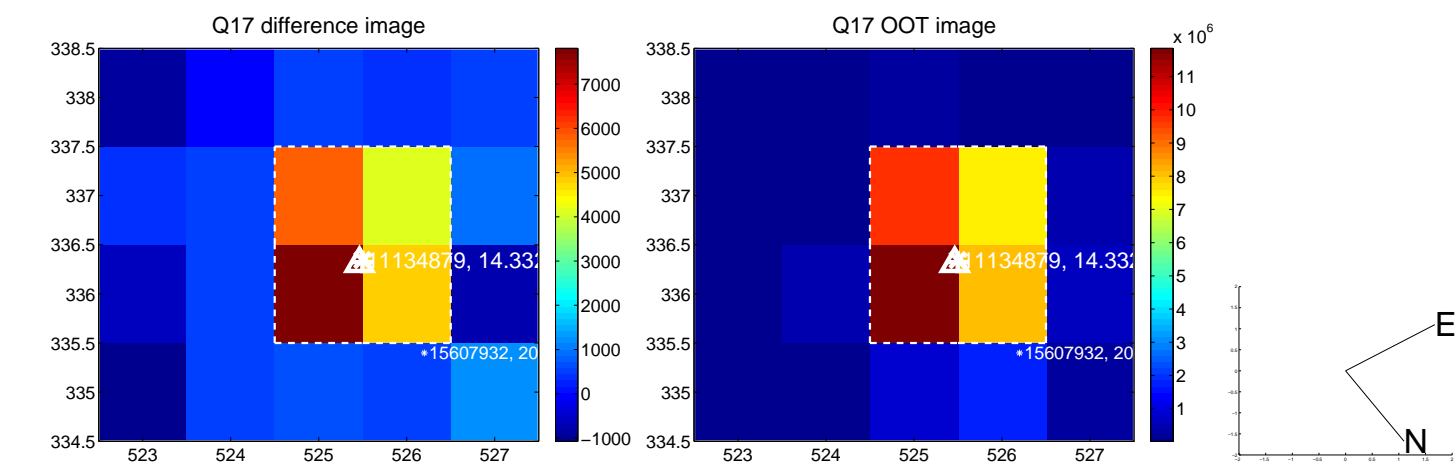
white \times : KIC target position; +: OOT centroid; \triangle : difference centroid. red \times : large negative pixel value.



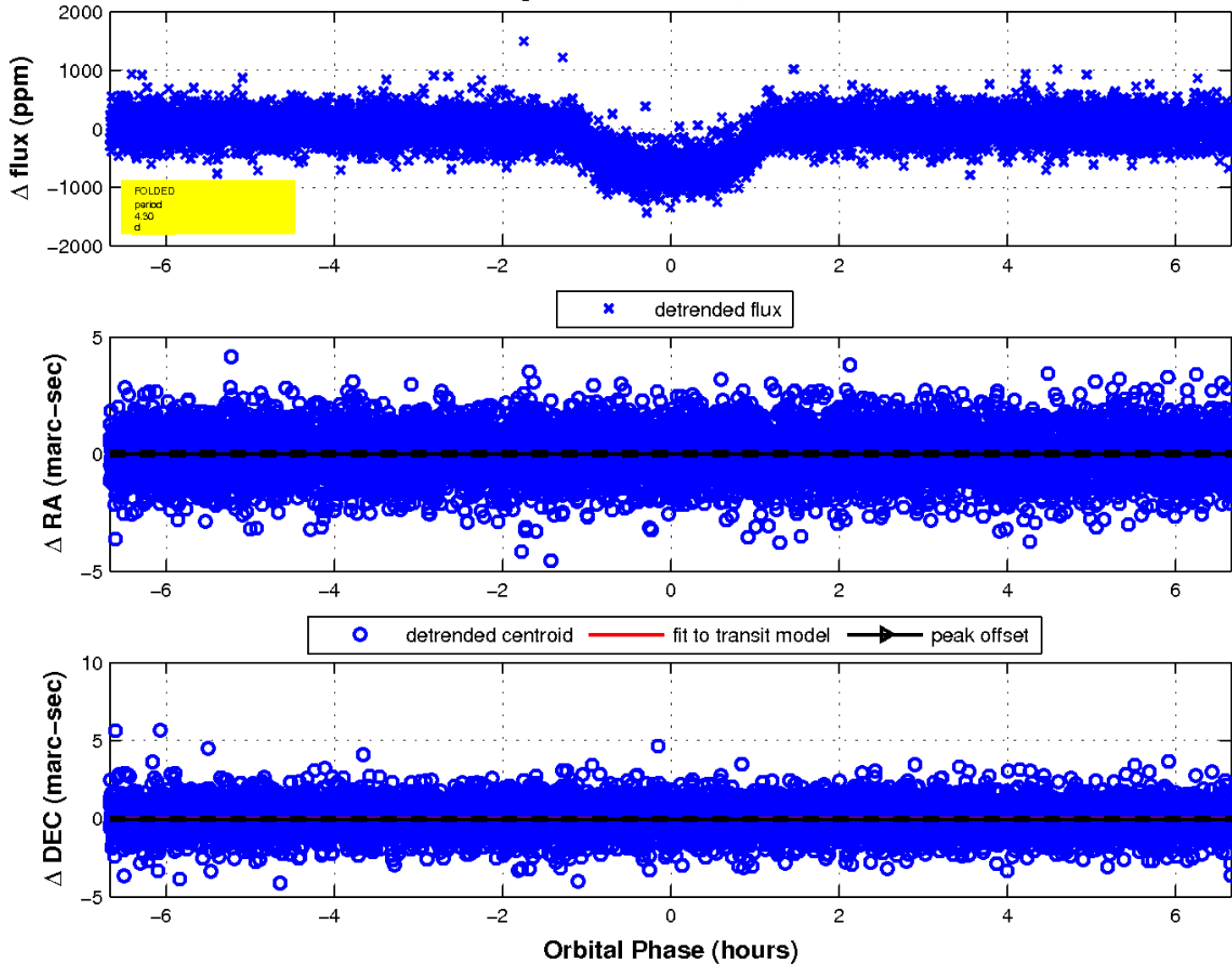
white \times : KIC target position; +: OOT centroid; \triangle : difference centroid. red \times : large negative pixel value.



white \times : KIC target position; $+$: OOT centroid; \triangle : difference centroid. red \times : large negative pixel value.



fluxWeightedCentroids, Planet 1 of 1



UKIRT Image

Declination

