

KIC 011134456

Q1-17 DR25 TCE Parameters

TCE	Run Type	KOI?	Period (Days)	Epoch (BKJD)	Depth (ppm)	Duration (Hours)	MES	SNR	R_{\star} (R_{\odot})	T_{\star} (K)	R_p (R_{\oplus})	S_p (S_{\oplus})
011134456-01	OBS	No	1.809035	131.962498	2.2	9.810	9.5	5.4	4.17	9833	0.66	86683.93

Robovetter Results

TCE	Run Type	Disp	Score	N	S	C	E	Comments
011134456-01	OBS	FP	0.00	1	0	0	0	LPP_DV—CENT_SATURATED

Notes: OBS = Observed. INJ = Injected. INV = Inverted. SCR = Scrambled.

N = Not Transit-Like. S = Stellar Eclipse. C = Centroid Offset. E = Ephemeris Match.

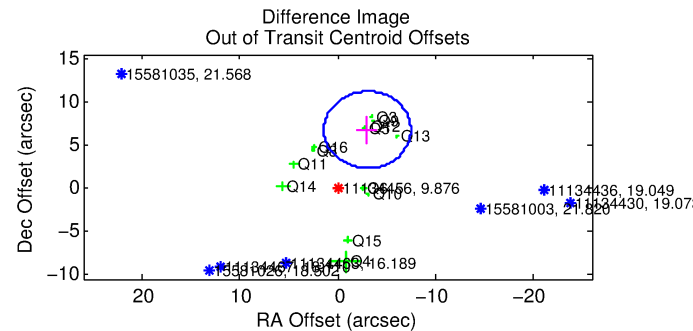
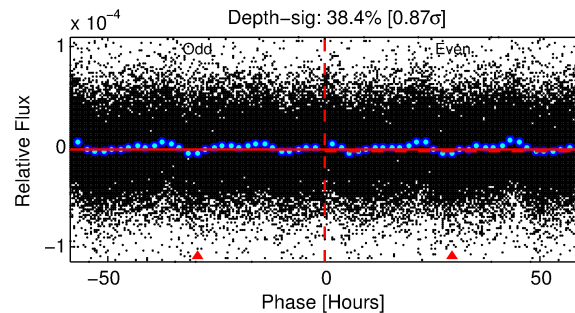
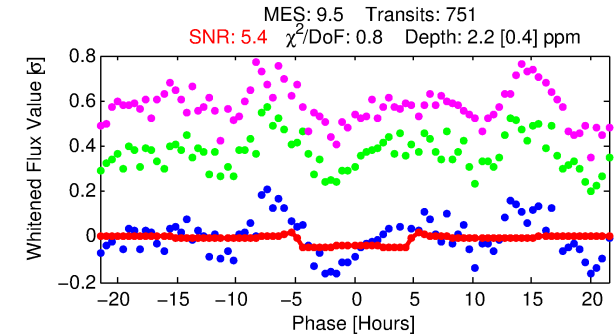
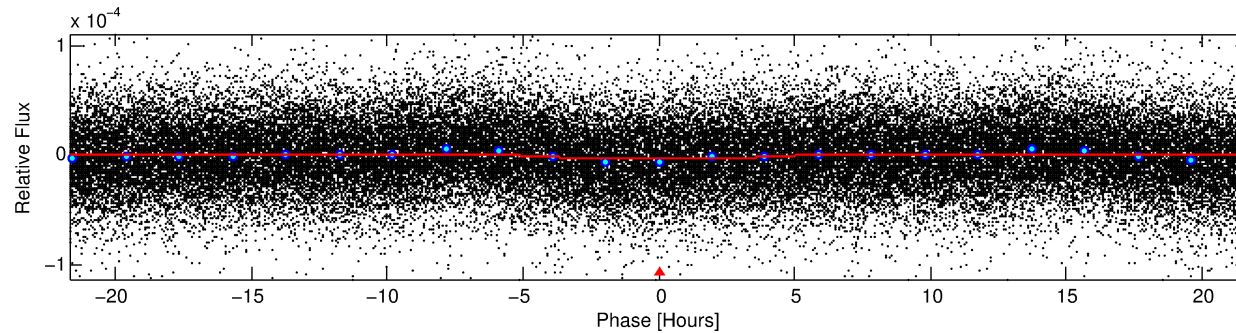
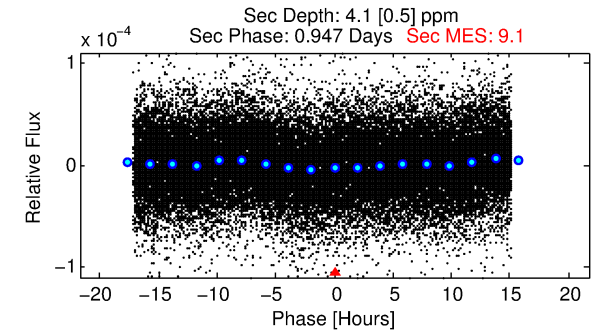
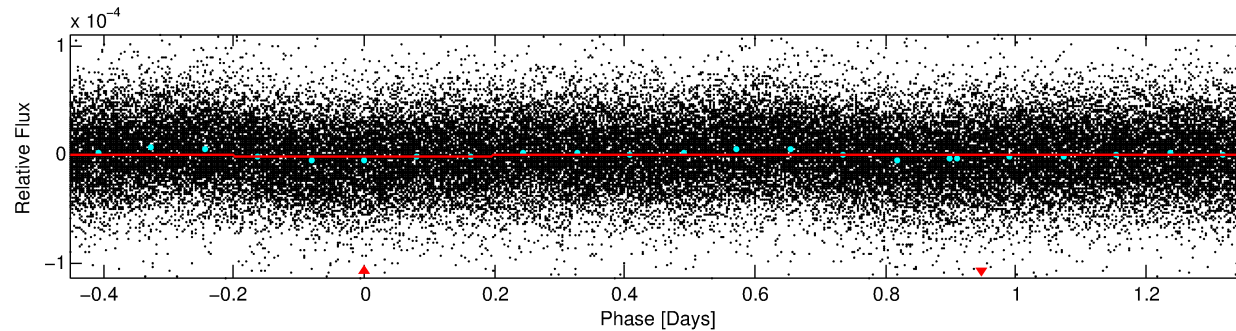
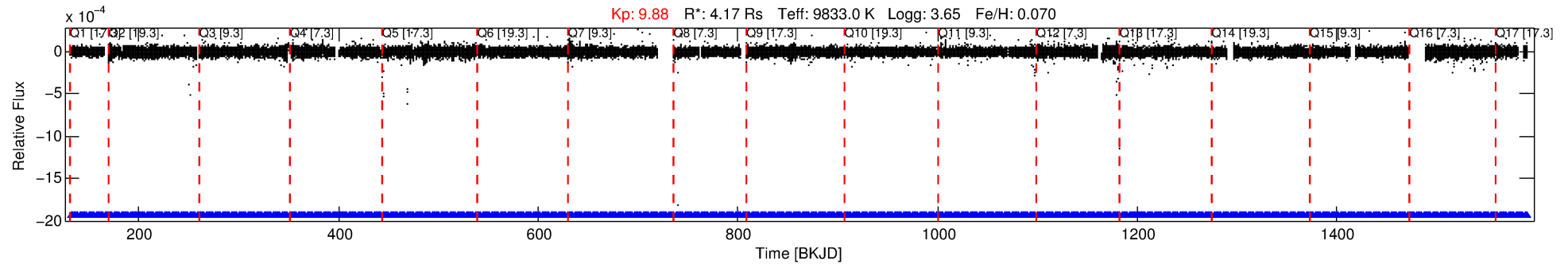
See http://exoplanetarchive.ipac.caltech.edu/docs/API_kepcandidate_columns.html#proj_disp_col for comment definitions.

Ephemeris Match Information For 011134456-01

No Significant Match Found

DV One-Page Summary

KIC: 11134456 Candidate: 1 of 1 Period: 1.809 d



DV Fit Results:

Period = 1.80904 [0.00004] d
Epoch = 131.9625 [0.0092] BKJD
Rp/R* = 0.0014 [0.0002]
a/R* = 1.36 [0.35]
b = 0.61 [0.58]
Seff = 86683.93 [70628.40]
Teq = 4375 [891] K
Rp = 0.66 [0.32] Re
a = 0.0410 [0.0197] AU
Ag = 8.78 [7.37] [1.06σ]
Teffp = 11645 [949] K [5.58σ]

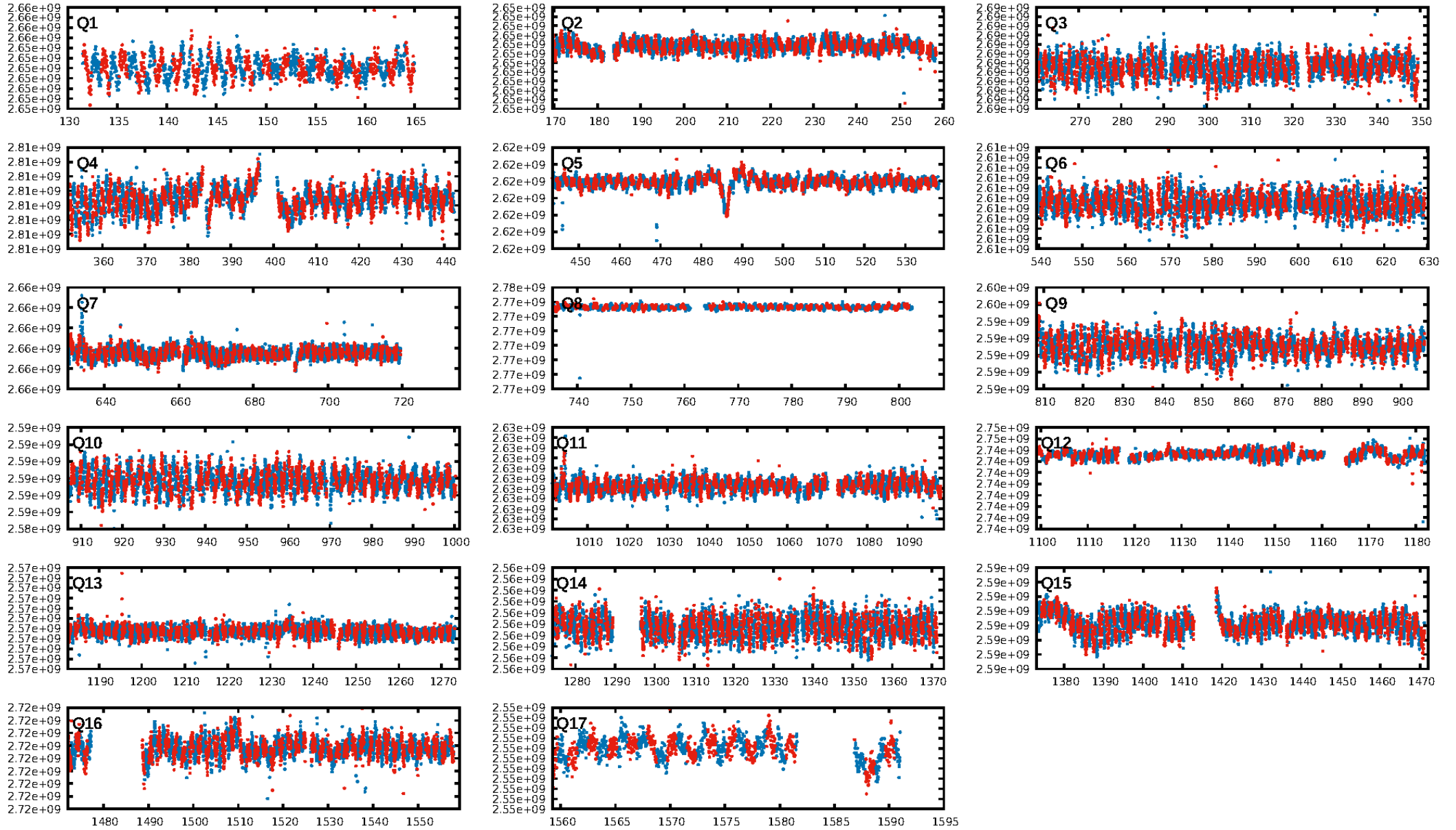
DV Diagnostic Results:

ShortPeriod-sig: N/A
LongPeriod-sig: N/A
ModelChiSquare2-sig: N/A
ModelChiSquareGof-sig: N/A
Bootstrap-pfa: 2.23e-11
RollingBand-fgt: 1.00 [717/717]
GhostDiagnostic-chr: N/A
Centroid-sig: N/A
Centroid-so: N/A
OotOffset-rm: 7.418 arcsec [5.00σ]
KicOffset-rm: 8.221 arcsec [5.88σ]
OotOffset-st: 3/3/4/3 [13]
KicOffset-st: 3/3/4/3 [13]
DiffImageQuality-fgm: 0.15 [2/13]
DiffImageOverlap-fno: 1.00 [17/17]

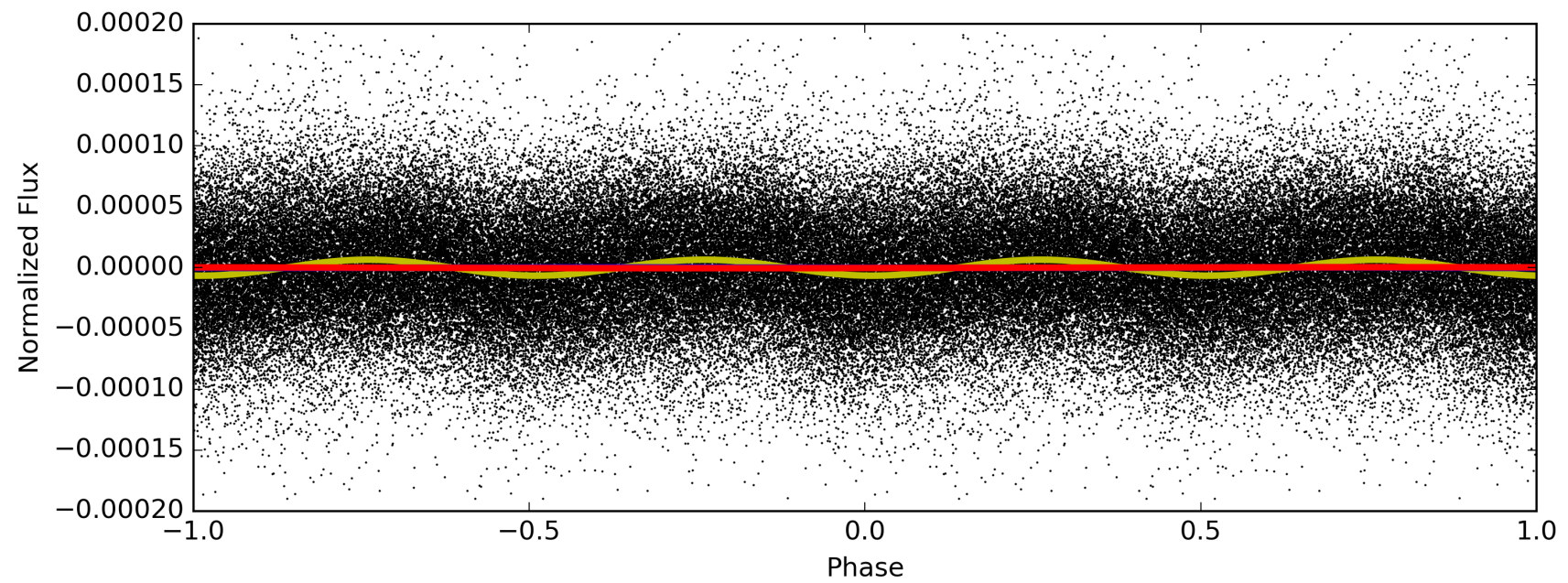
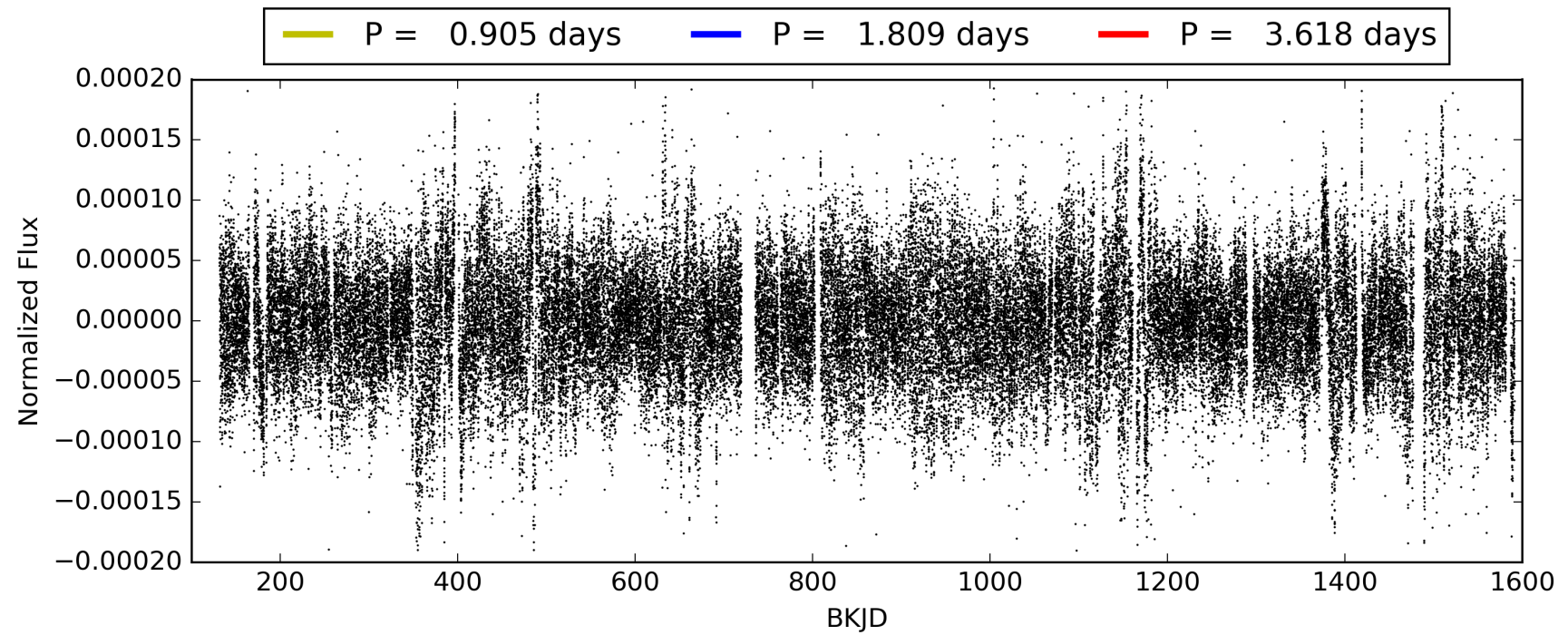
Software Revision: svn+ssh://murzim/repo/soc/tags/release/9.3.42@60958 -- Date Generated: 29-Jan-2016 10:10:12 Z

This Data Validation Report Summary was produced in the Kepler Science Operations Center Pipeline at NASA Ames Research Center

TCE 011134456-01, PDC Light Curves

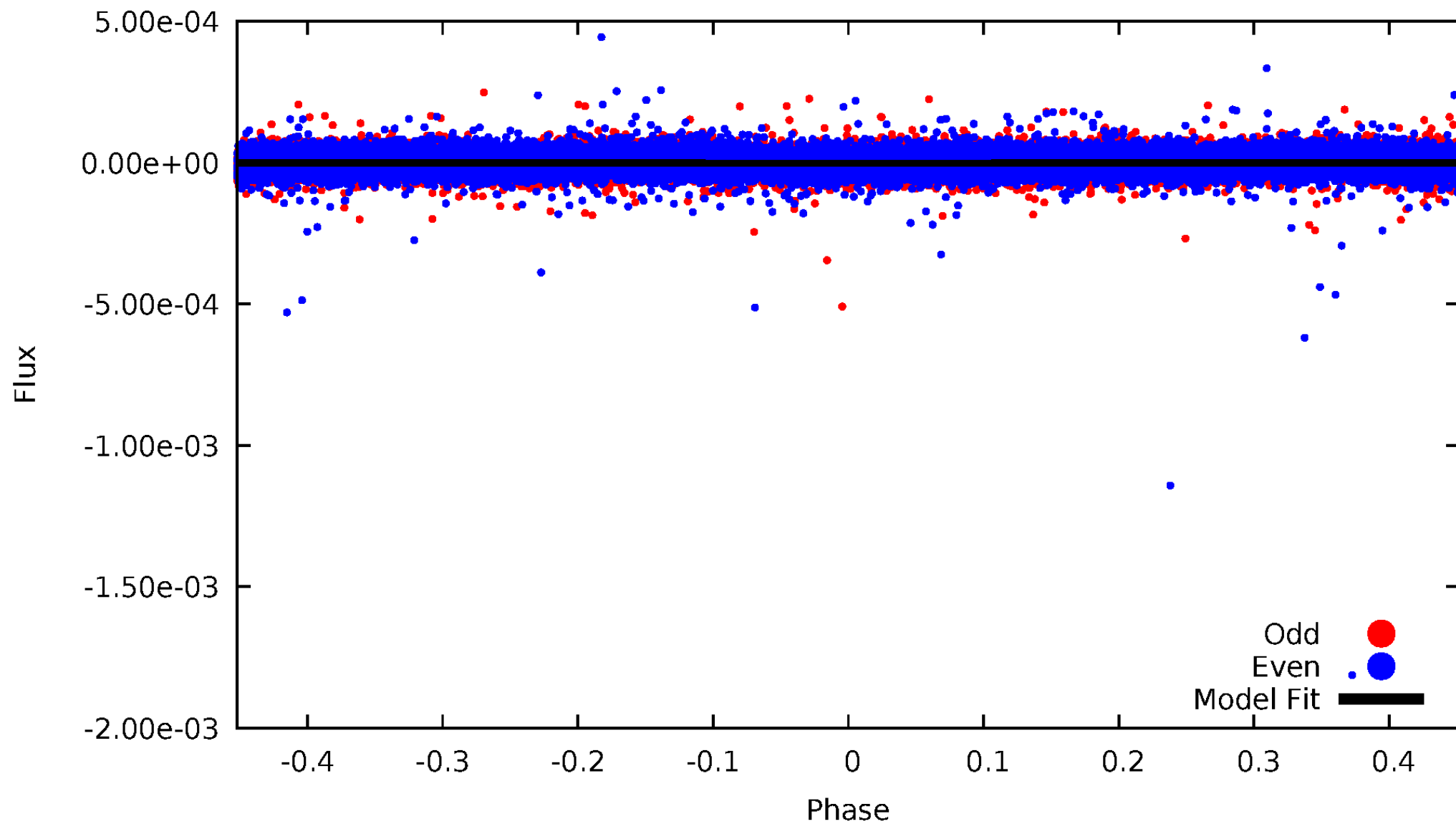


TCE 011134456-01



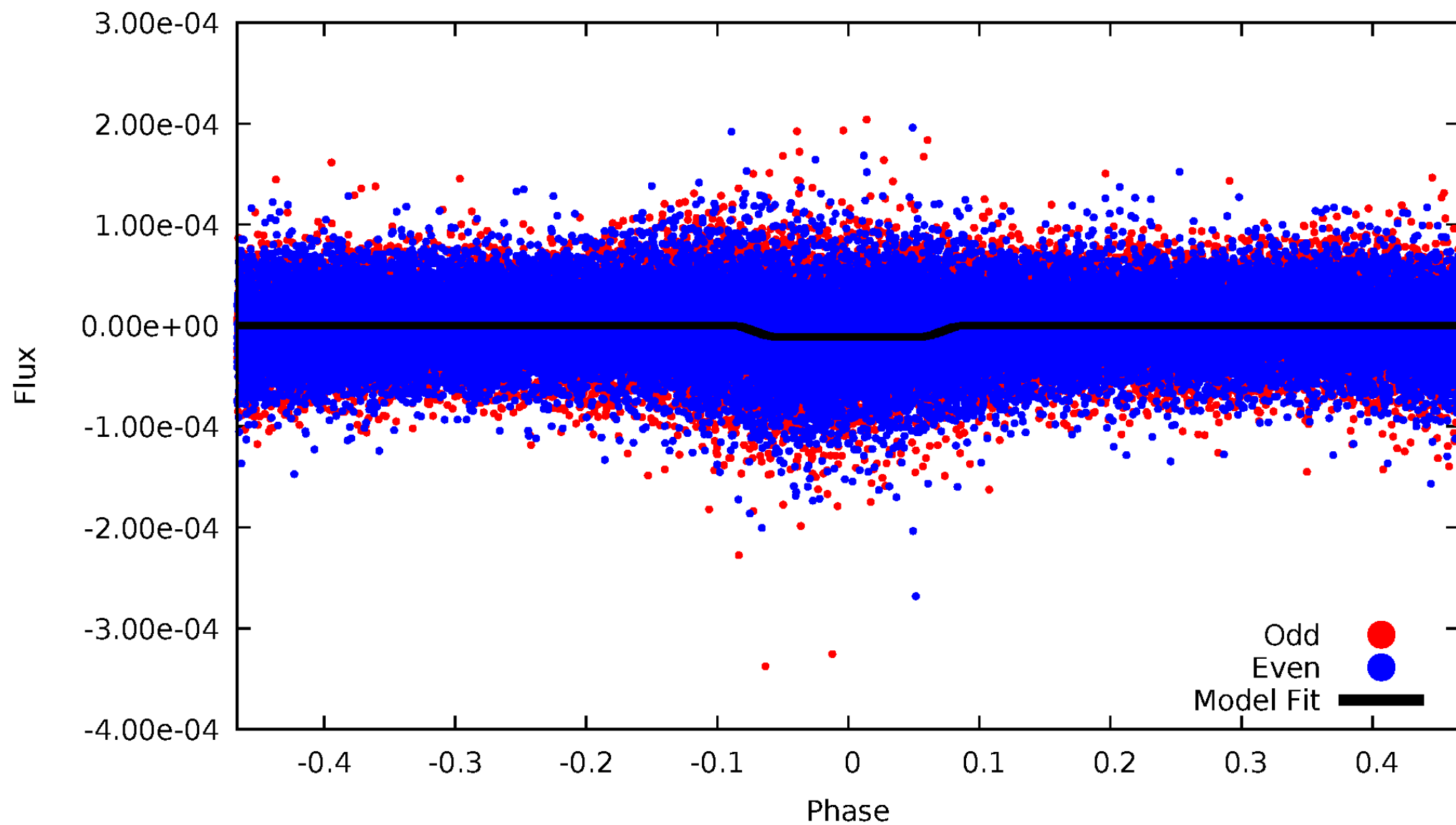
DV Odd/Even

TCE 011134456-01



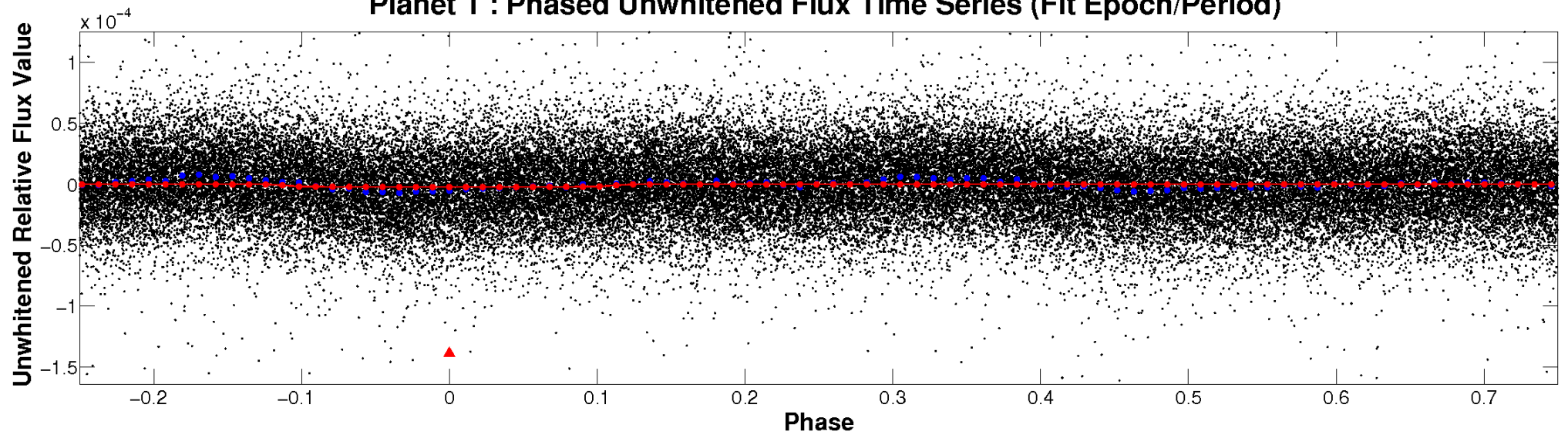
ALT Odd/Even

TCE 011134456-01

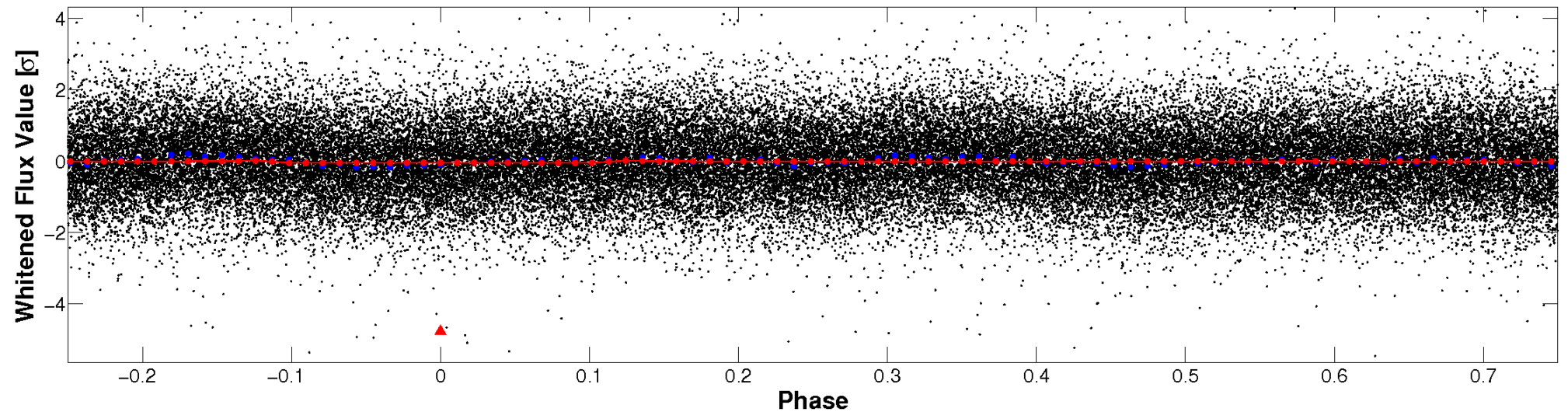


Non-Whitened Vs. Whitened Light Curve

Planet 1 : Phased Unwhitened Flux Time Series (Fit Epoch/Period)

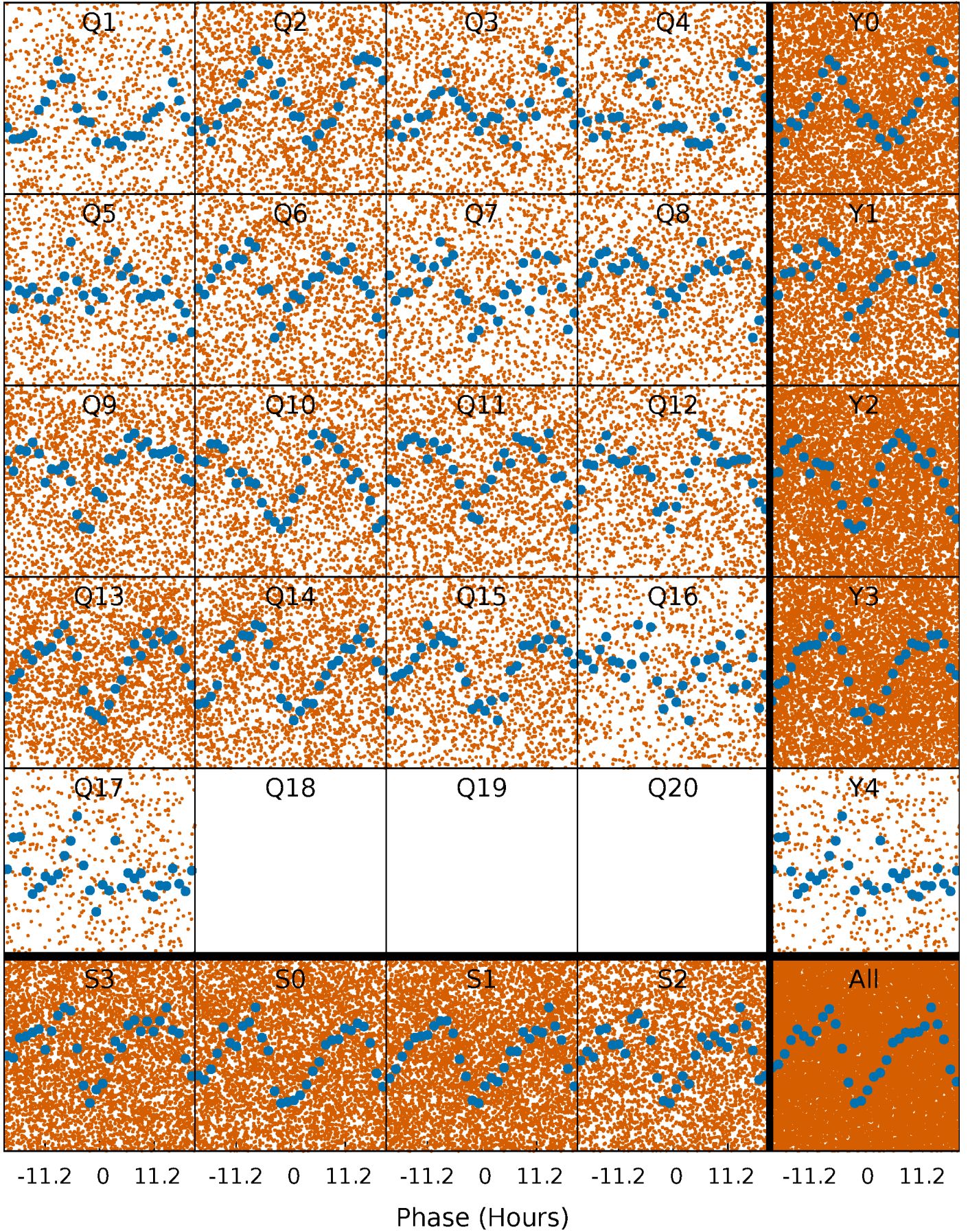


Planet 1 : Phased Whitened Flux Time Series (Fit Epoch/Period)



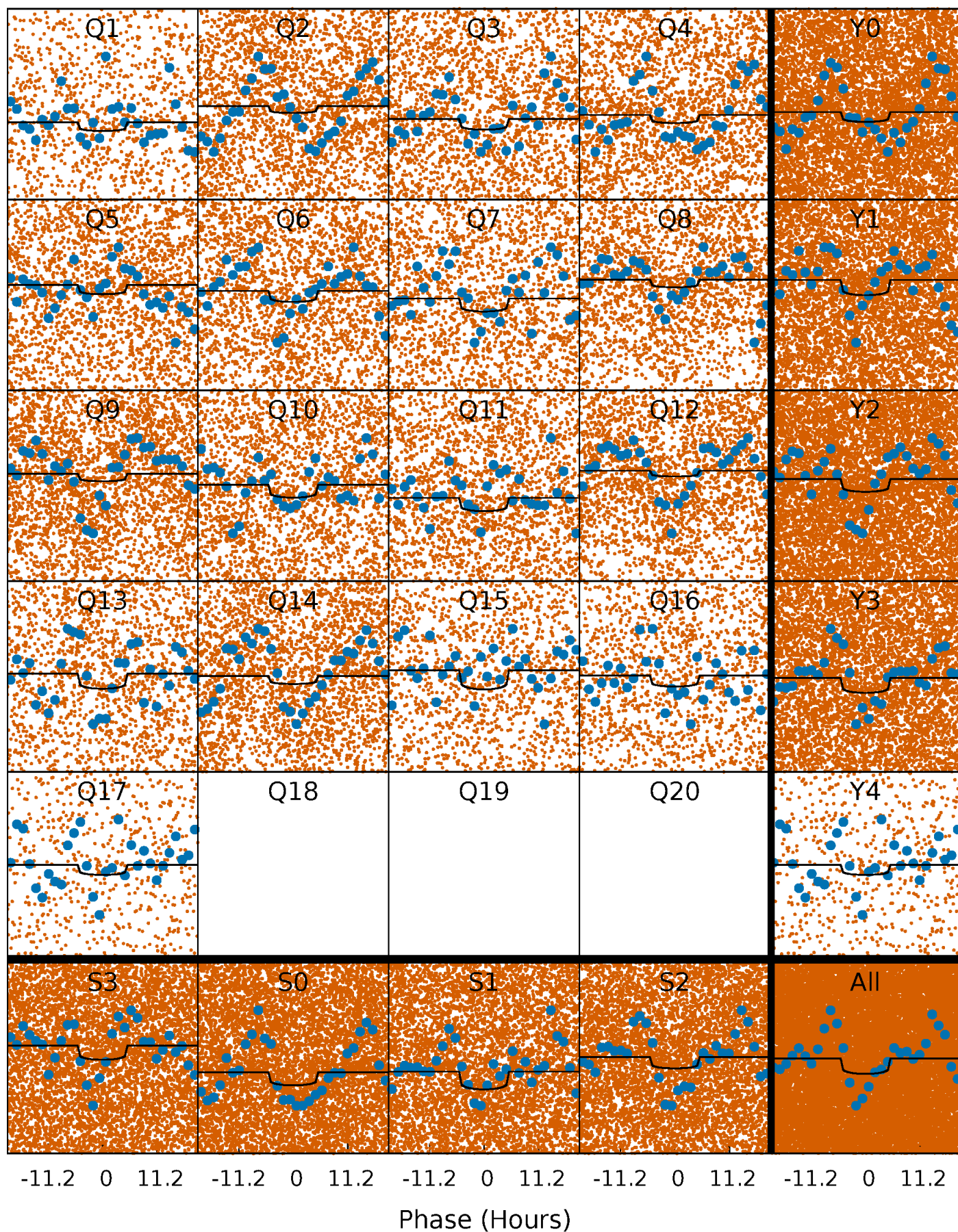
PDC Quarter-Phased Transit Curves

TCE 011134456-01 P= 1.809035 Days $T_0=131.962498$ (BKJD)



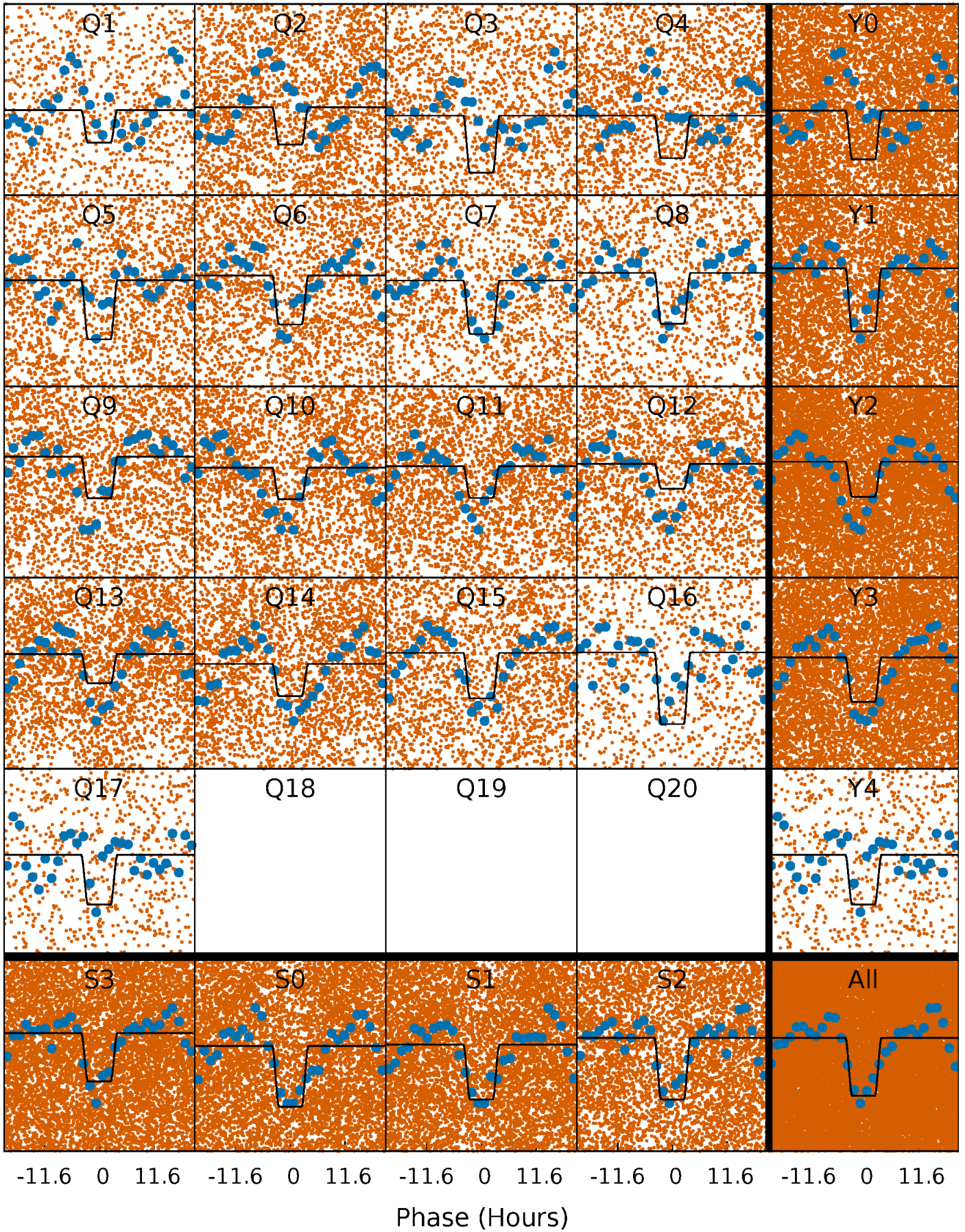
DV Quarter-Phased Transit Curves

TCE 011134456-01 P= 1.809035 Days $T_0=131.962498$ (BKJD)



Alt. Detrend Quarter-Phased Transit Curves

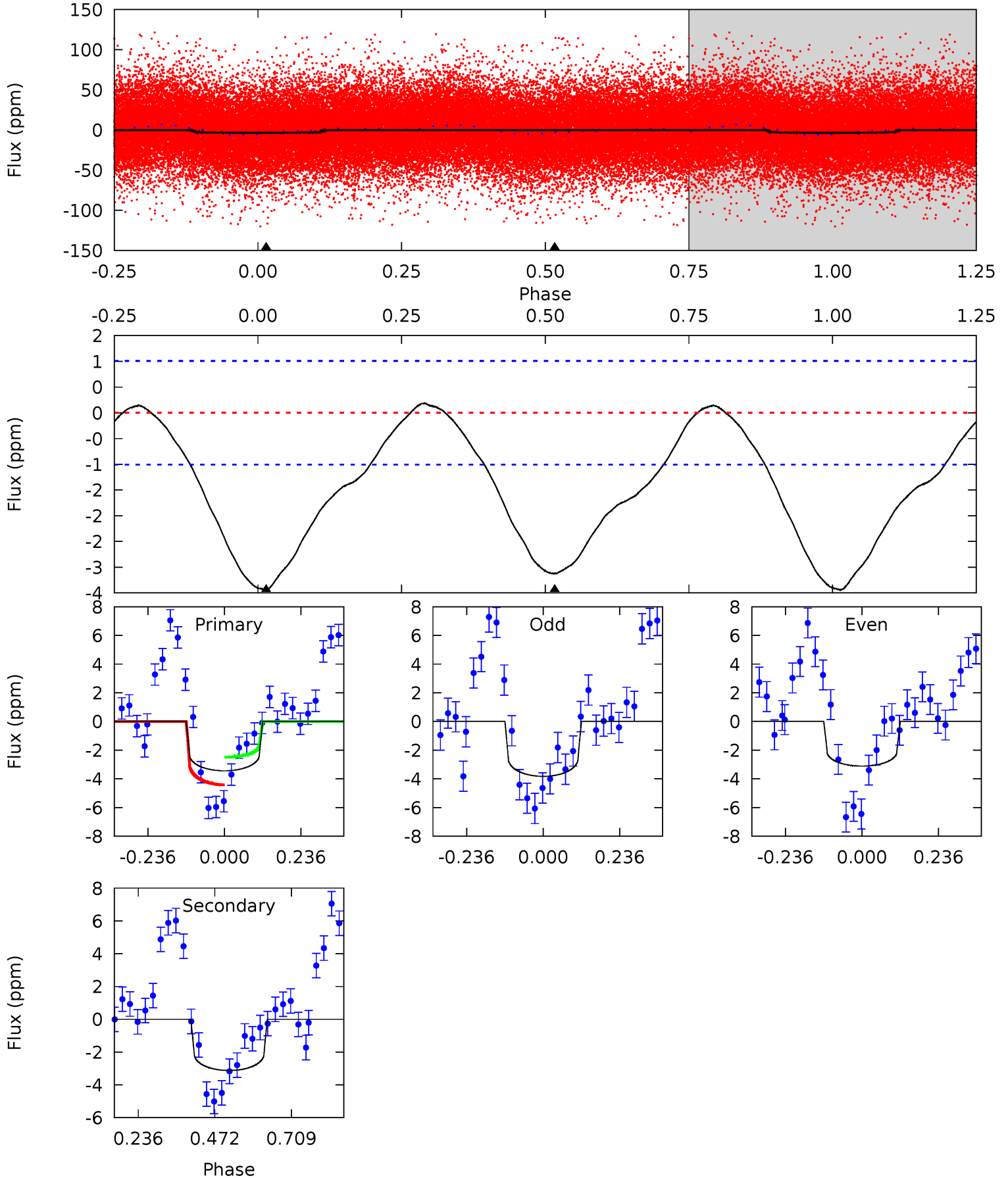
TCE 011134456-01 P= 1.809164 Days $T_0=131.881465$ (BKJD)



DV Model-Shift Uniqueness Test

011134456-01, P = 1.809035 Days, E = 130.153463 Days

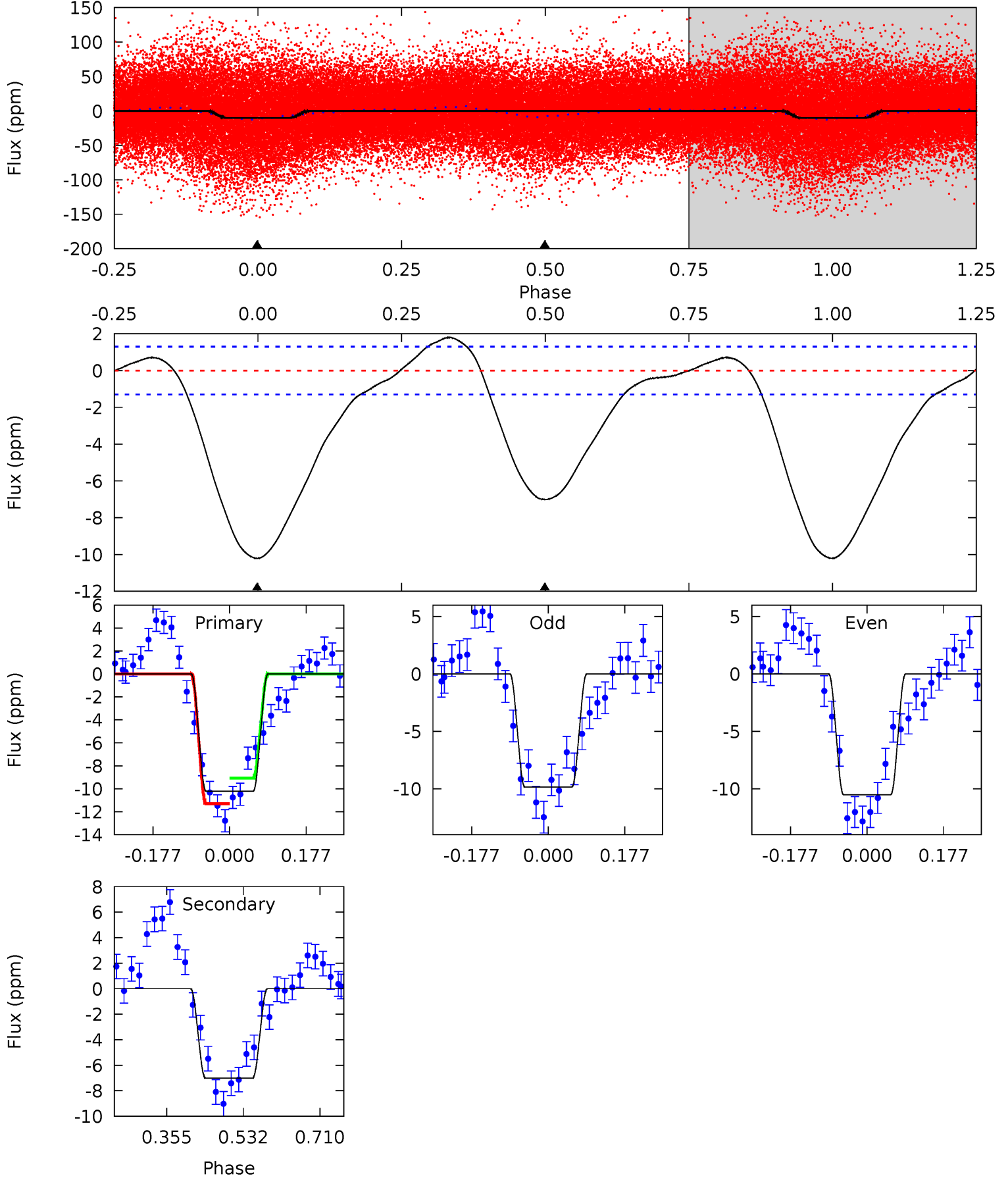
Pri	Sec	Ter	Pos	FA ₁	FA ₂	F _{Red}	Pri-Ter	Pri-Pos	Sec-Ter	Sec-Pos	Odd-Evn	DMM	Shape	TAT
15.0	13.6	0	0	4.38	1.18	0.64	15.0	15.0	13.6	13.6	1.55	0.99	0.05	4.10



Alt Model-Shift Uniqueness Test

011134456-01, P = 1.809164 Days, E = 130.072301 Days

Pri	Sec	Ter	Pos	FA ₁	FA ₂	F _{Red}	Pri-Ter	Pri-Pos	Sec-Ter	Sec-Pos	Odd-Evn	DMM	Shape	TAT
34.9	24.0	0	0	4.44	1.35	2.50	34.9	34.9	24.0	24.0	1.16	1.17	0.15	3.81



Stellar Parameters For KIC 011134456

	$T_{\text{eff}}(K)$	$\log(g)$	[Fe/H]	R (R_{\odot})	$M(M_{\odot})$	p_{\star} ($\text{g}\cdot\text{cm}^{-3}$)
	9833^{+274}_{-445}	$3.646^{+0.476}_{-0.084}$	$0.070^{+0.150}_{-0.600}$	$4.172^{+0.836}_{-1.951}$	$2.806^{+0.286}_{-0.859}$	$0.054^{+0.274}_{-0.015}$
	+3%/-5%	+13%/-2%	+214%/-857%	+20%/-47%	+10%/-31%	+502%/-27%
Source	KIC0	KIC0	KIC0	DSEP		

KIC = Kepler Input Catalog; PHO = Photometry; SPE = Spectroscopy; AST = Asteroseismology
 TRA = Transits; DESP = Dartmouth Models; MULT = Multiple Models

Secondary Eclipse Parameters for KIC 011134456-01 / KOI

Detrend	Depth (ppm)	R_p (R_{\oplus})	T_{max} (K)	T_{obs} (K)	A_{obs}
DV	-3 ± 0	$0.60^{+0.13}_{-0.16}$	5795^{+533}_{-679}	11185^{+1468}_{-1135}	$7.981^{+5.867}_{-2.476}$
Alt.	-7 ± 0	$1.41^{+0.24}_{-0.37}$	5836^{+479}_{-721}	8125^{+390}_{-424}	$3.253^{+2.269}_{-0.804}$

T_{max} = Theoretical Maximum Planetary Temperature
 T_{obs} = Observed Planetary Temperature (Assuming $A=0.3$)
 A_{obs} = Observed Albedo (Assuming $T=0$)

If a secondary eclipse is present, the system is likely an EB if $T_{obs} \gg T_{max}$ AND $A_{obs} \gg 1.0$

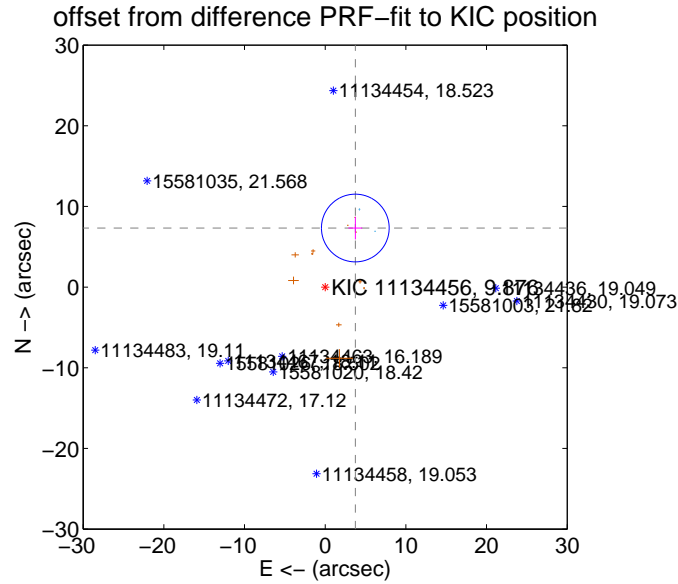
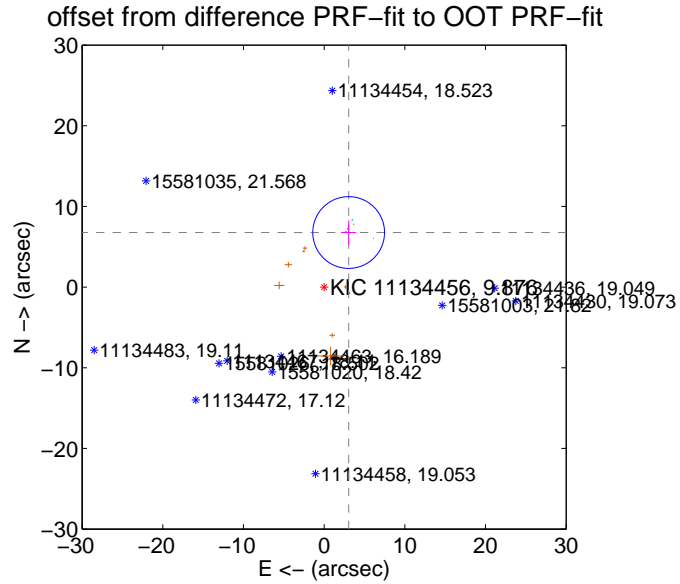
DV Centroid Data

Supplemental centroid analysis for 011134456-01. **Kepler magnitude: 9.88.** Transit SNR 5.37

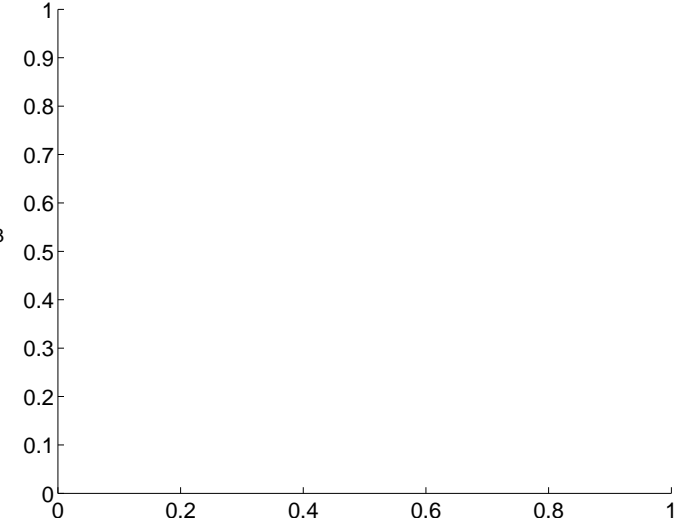
There are 2 quarters with good PRF difference image offsets

The direct PRF centroid is offset from the target star catalog position by about 0.96 arcsec

	Distance in arcsec	Distance / σ	Δ RA	Δ Dec
PRF-fit source offset from OOT	7.418 \pm 1.483	5.00	-3.039 \pm 0.948	6.766 \pm 1.505
PRF-fit source offset from KIC position	8.221 \pm 1.399	5.88	-3.735 \pm 0.858	7.324 \pm 1.407
photometric centroid source offset	—	—	—	—

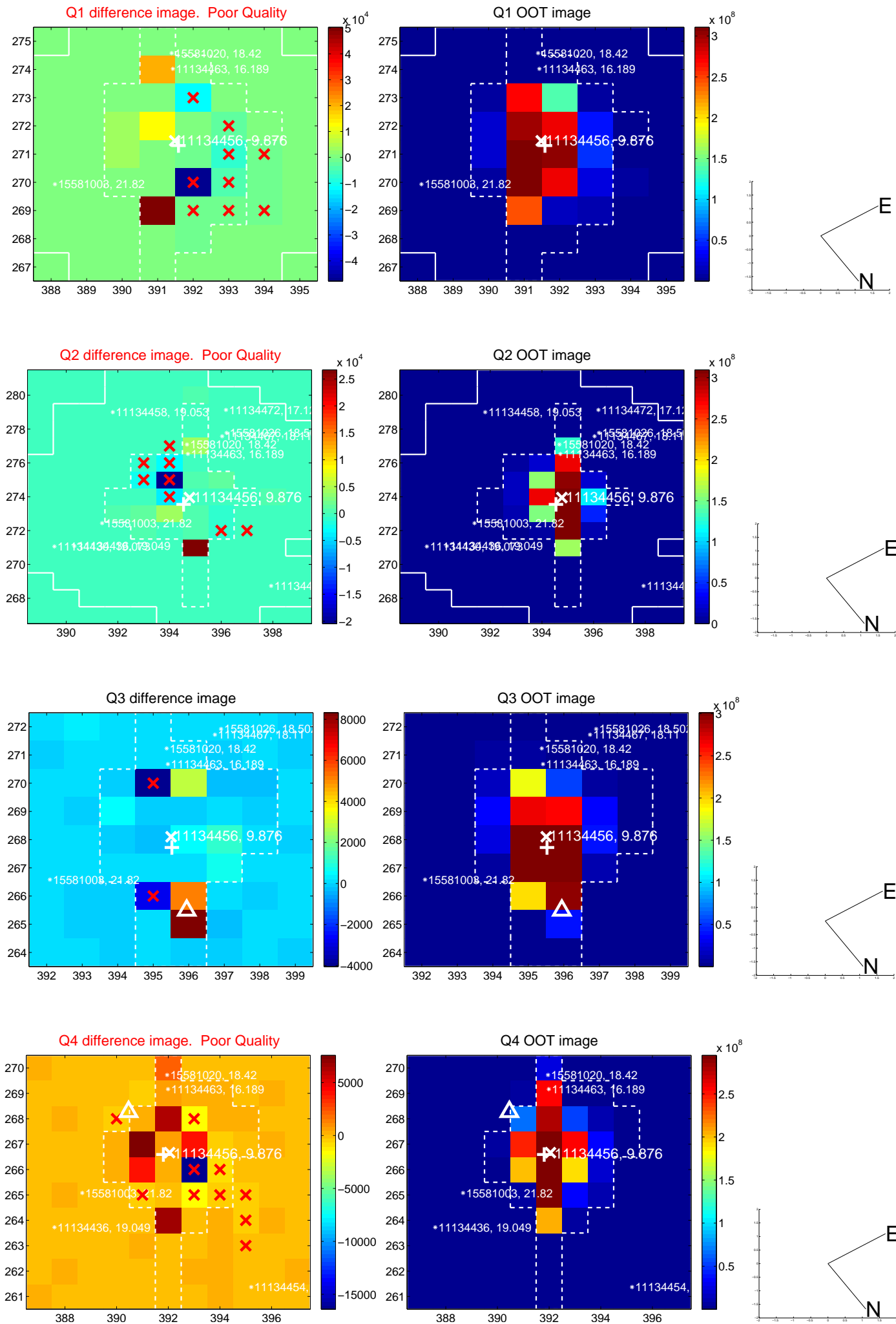


There are no photometric centroids

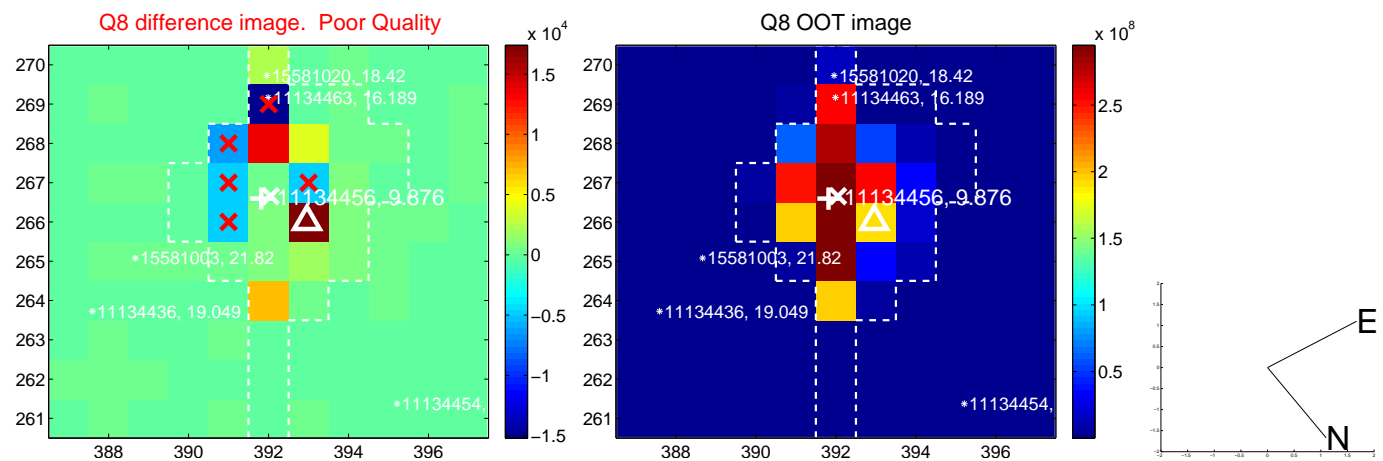
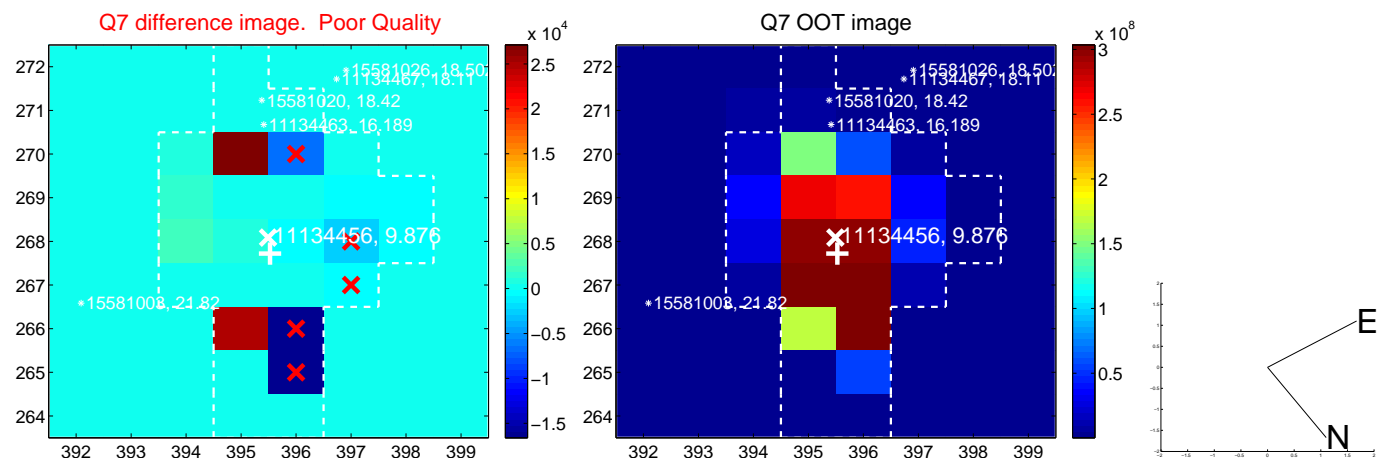
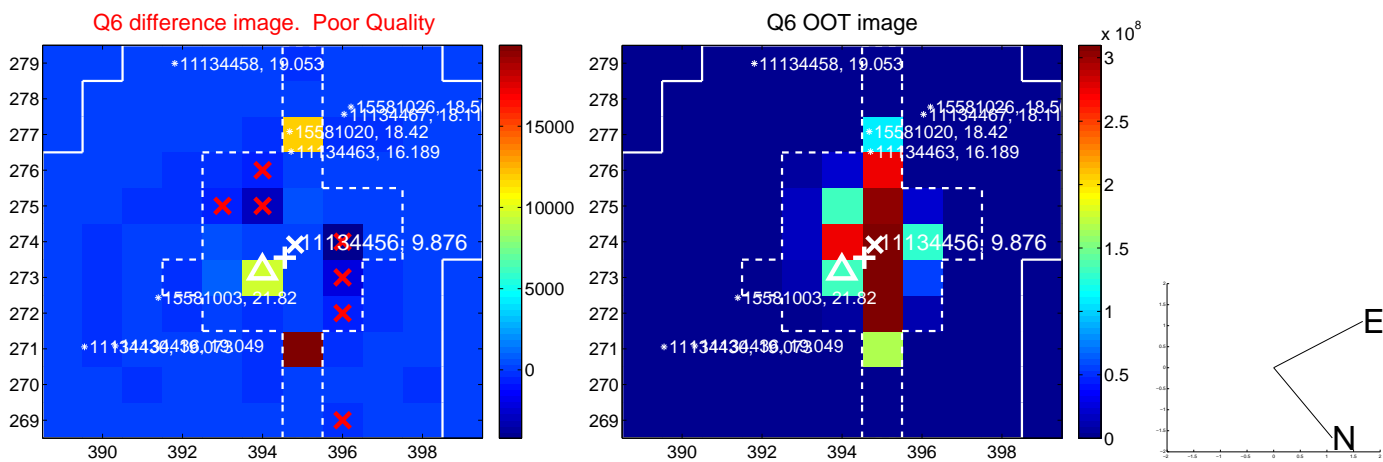
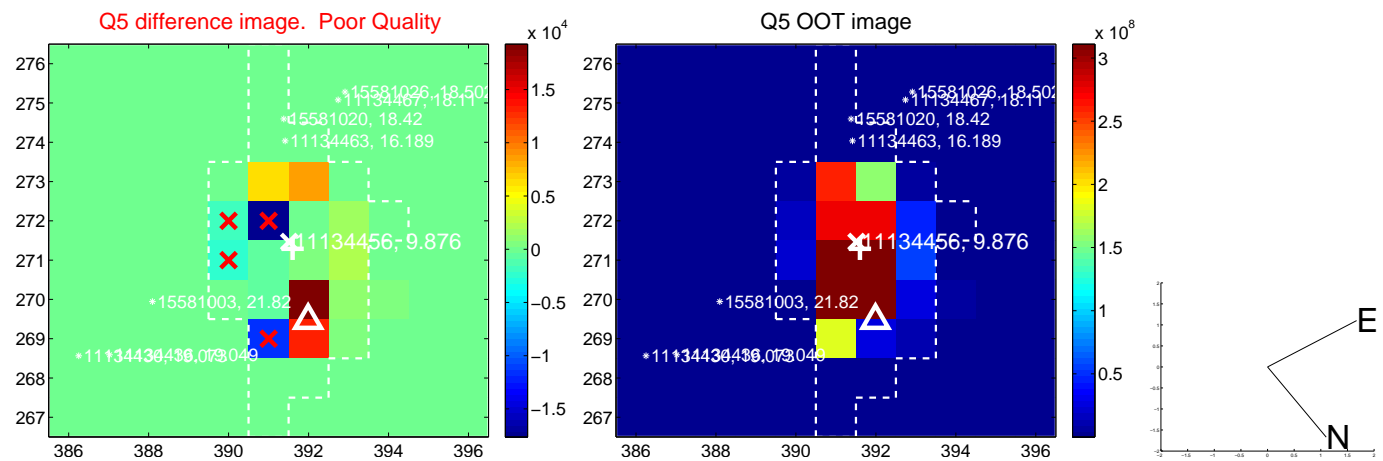


Centroid source offsets from the target star reconstructed from PRF and photometric centroids. **Sky blue crosses: good quarterly centroid offsets; Vermillion crosses: bad quarterly centroid offsets;** magenta cross: average over quarters. Length of the crosses: one- σ uncertainty. Blue circle: three- σ . Red *: target star. Blue *: Other stars. Text next to a star gives its KIC ID and kepmag. KIC IDs > 15,000,000 are from the UKIRT catalog.

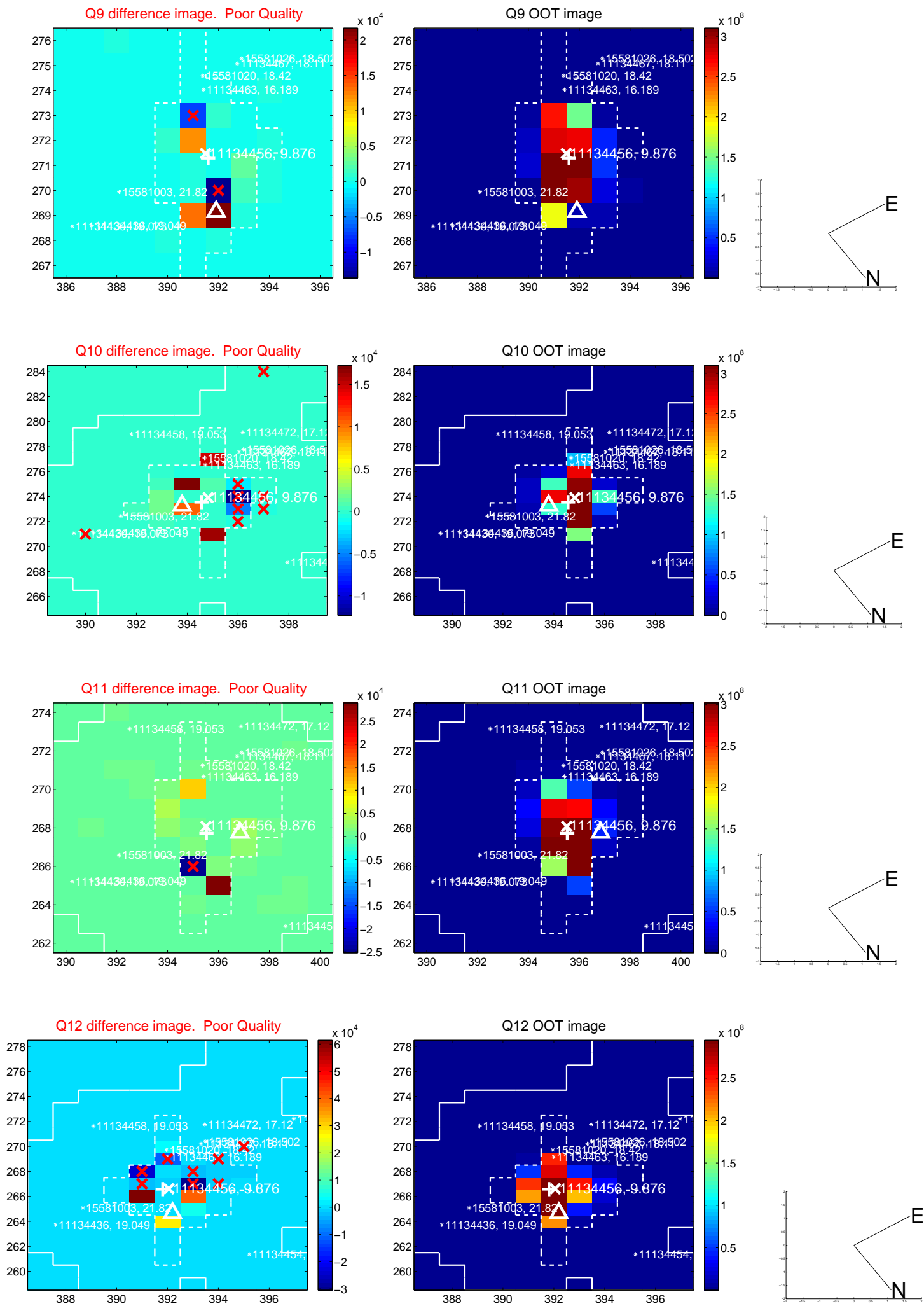
white \times : KIC target position; +: OOT centroid; \triangle : difference centroid. red \times : large negative pixel value.



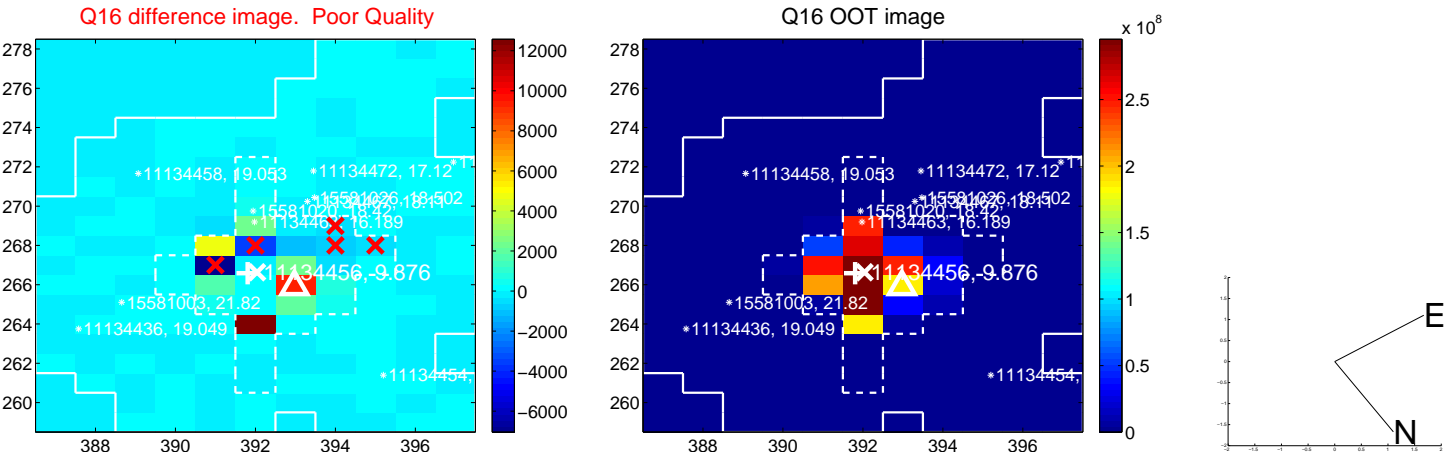
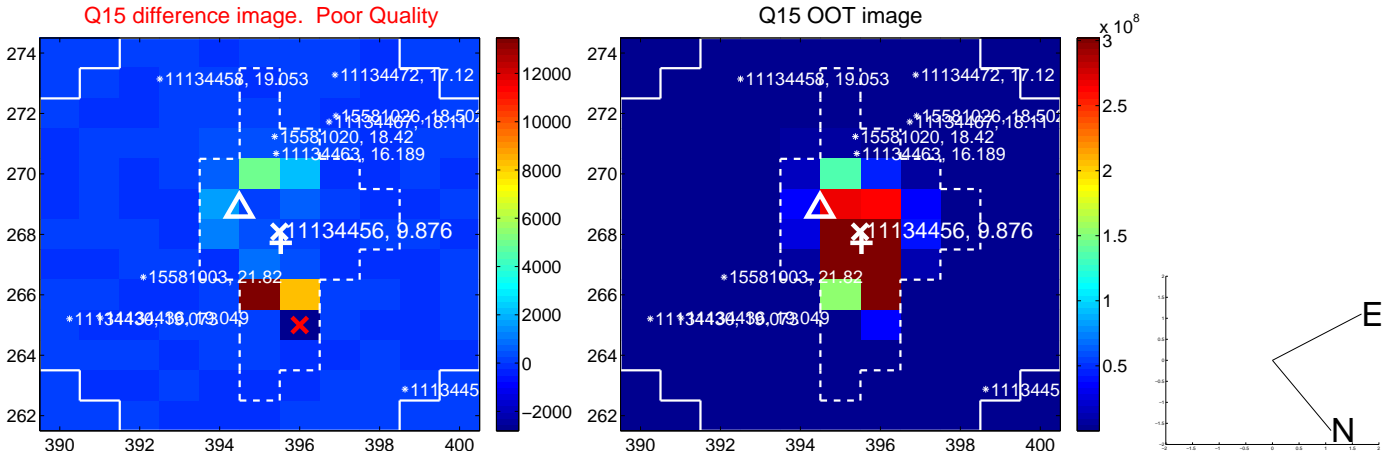
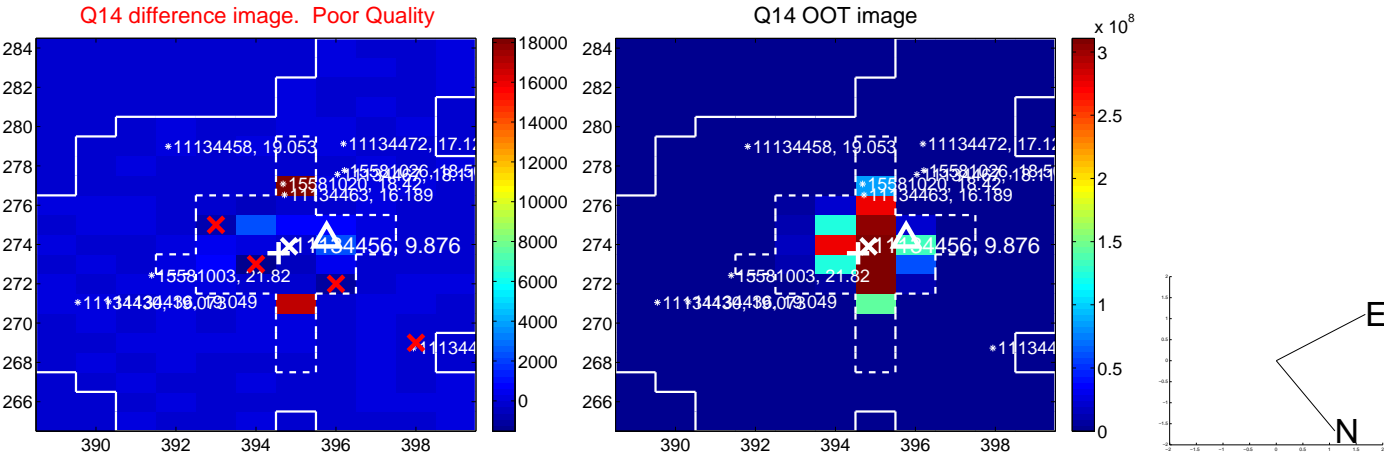
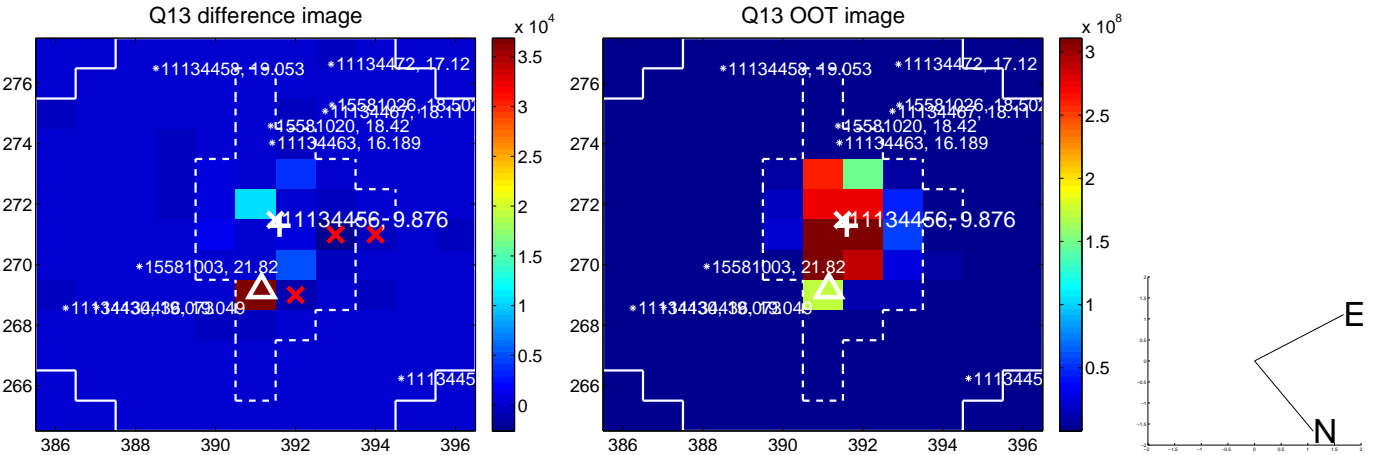
white \times : KIC target position; +: OOT centroid; \triangle : difference centroid. red \times : large negative pixel value.



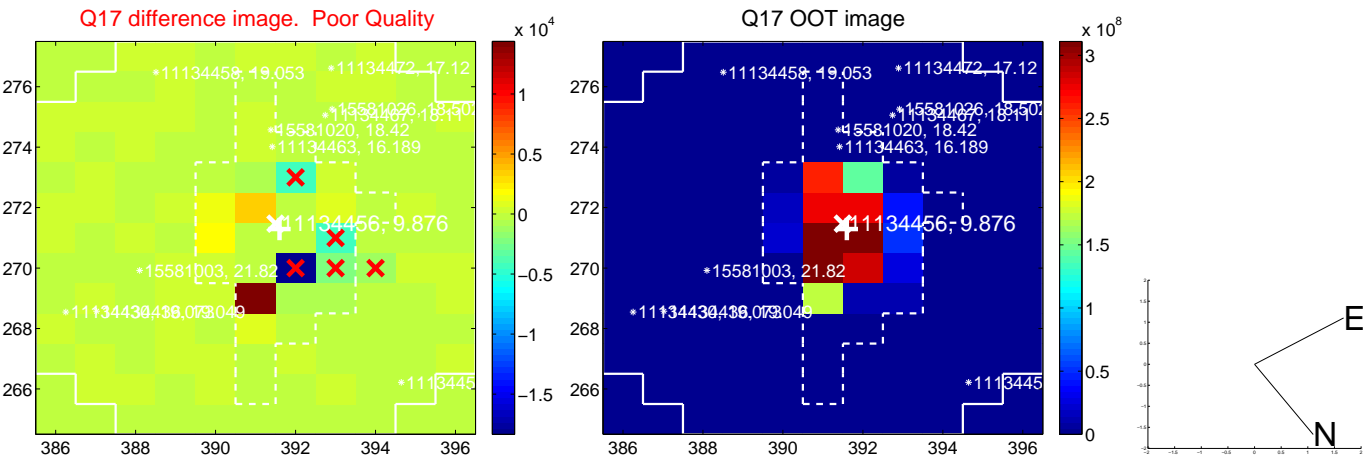
white \times : KIC target position; +: OOT centroid; \triangle : difference centroid. red \times : large negative pixel value.



white \times : KIC target position; +: OOT centroid; \triangle : difference centroid. red \times : large negative pixel value.



white \times : KIC target position; +: OOT centroid; \triangle : difference centroid. red \times : large negative pixel value.



folded centroid time series figure for this object.

UKIRT Image

