

KIC 01122479

Q1-17 DR25 TCE Parameters

TCE	Run Type	KOI?	Period (Days)	Epoch (BKJD)	Depth (ppm)	Duration (Hours)	MES	SNR	R_{\star} (R_{\odot})	T_{\star} (K)	R_p (R_{\oplus})	S_p (S_{\oplus})
011122479-01	OBS	No	388.148087	346.006847	155.5	12.591	8.0	7.2	2.68	6010	3.62	6.29

Robovetter Results

TCE	Run Type	Disp	Score	N	S	C	E	Comments
011122479-01	OBS	FP	0.00	1	0	0	0	INDIV_TRANS_MARSHALL_SKYE—LPP_DV—CENT_FEW_DIFFS

Notes: OBS = Observed. INJ = Injected. INV = Inverted. SCR = Scrambled.

N = Not Transit-Like. S = Stellar Eclipse. C = Centroid Offset. E = Ephemeris Match.

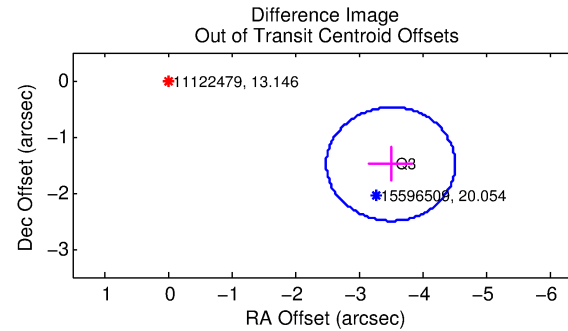
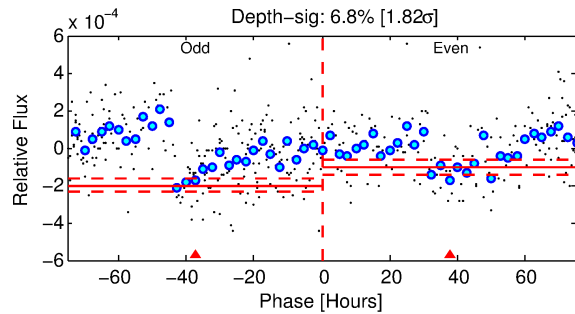
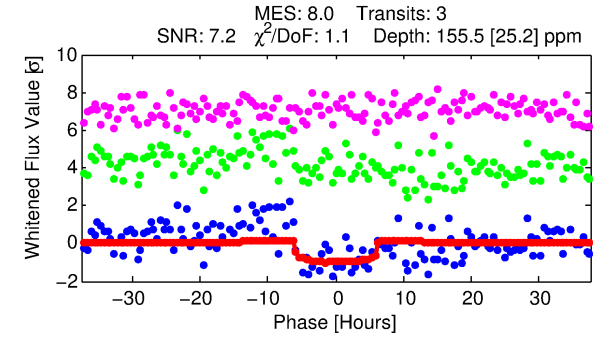
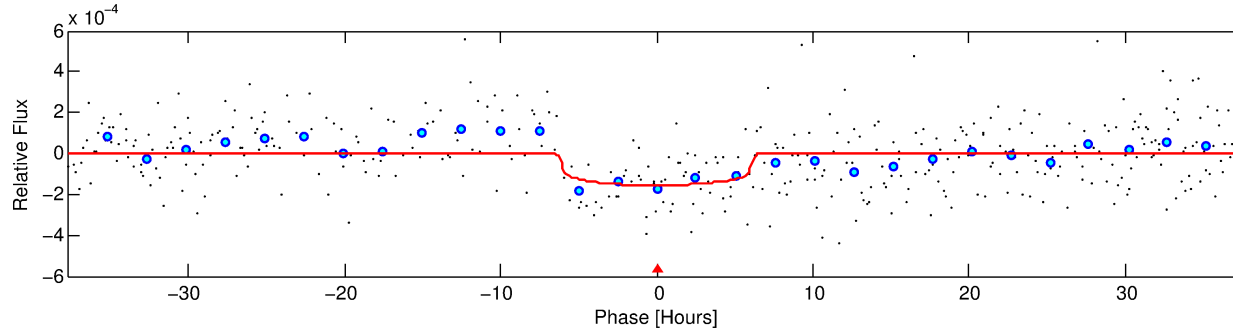
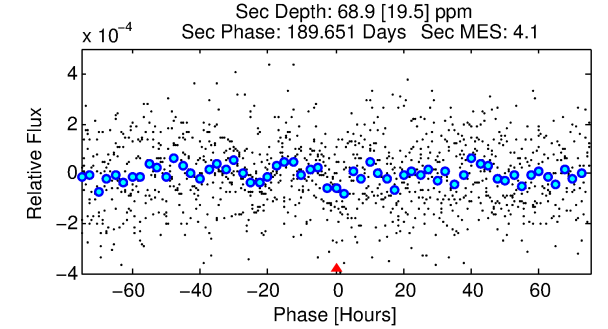
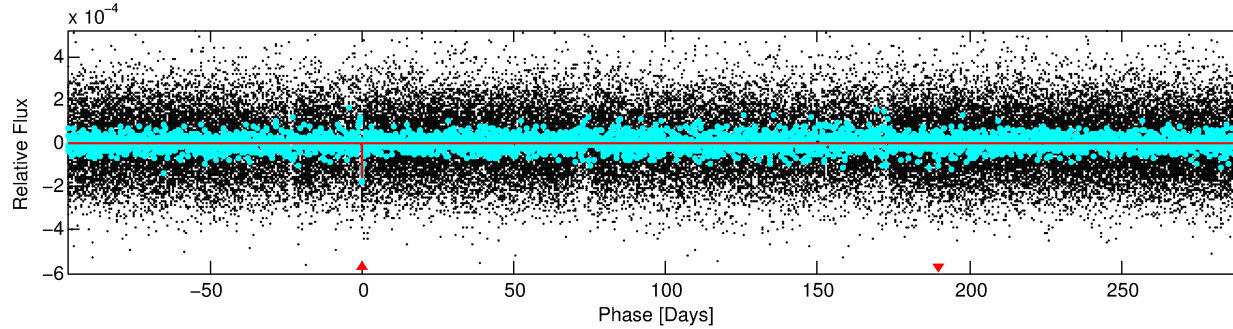
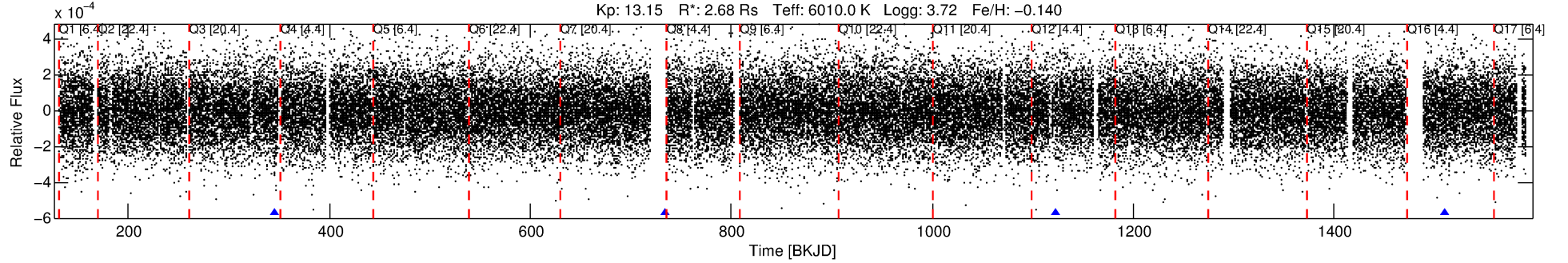
See http://exoplanetarchive.ipac.caltech.edu/docs/API_kepcandidate_columns.html#proj_disp_col for comment definitions.

Ephemeris Match Information For 011122479-01

No Significant Match Found

DV One-Page Summary

KIC: 11122479 Candidate: 1 of 1 Period: 388.148 d



DV Fit Results:

Period = 388.14809 [0.01207] d
Epoch = 346.0068 [0.0233] BKJD
Rp/R* = 0.0124 [0.0079]
a/R* = 160.93 [507.69]
b = 0.75 [1.88]
Seff = 6.29 [3.76]
Teq = 404 [60] K
Rp = 3.62 [2.70] Re
a = 1.1558 [0.4242] AU
Ag = 3852.00 [5524.44] [0.70σ]
Teff = 4919 [1616] K [2.79σ]

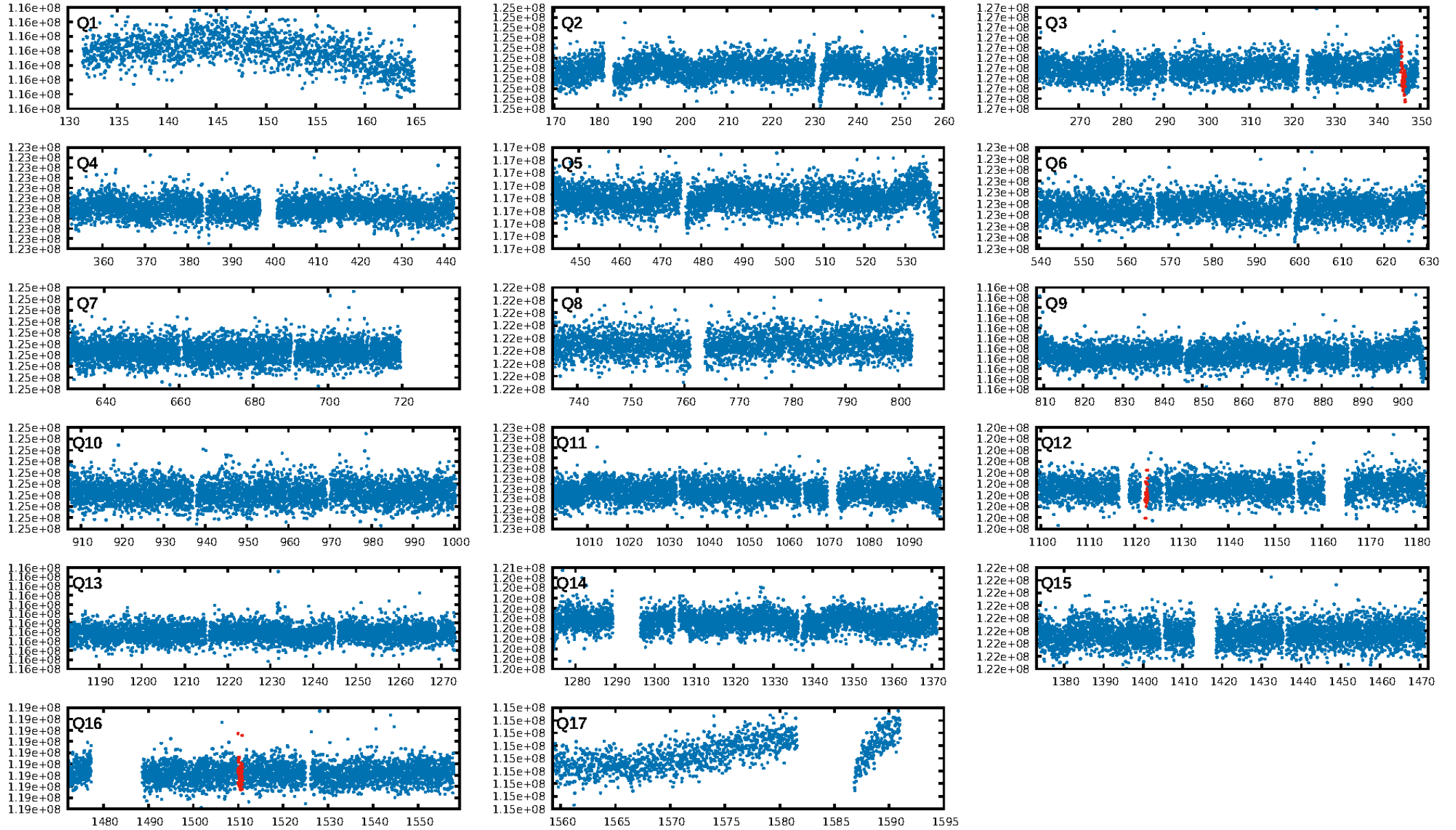
DV Diagnostic Results:

ShortPeriod-sig: N/A
LongPeriod-sig: N/A
ModelChiSquare2-sig: 17.6%
ModelChiSquareGoF-sig: 100.0%
Bootstrap-pfa: 2.33e-13
RollingBand-fgt: 1.00 [3/3]
GhostDiagnostic-chr: -5.744
Centroid-sig: 27.2%
Centroid-so: 2.763 arcsec [1.21σ]
OotOffset-rm: 3.810 arcsec [11.29σ]
KicOffset-rm: 3.995 arcsec [11.86σ]
OotOffset-st: 0/1/0/0 [1]
KicOffset-st: 0/1/0/0 [1]
DiffImageQuality-fgm: 1.00 [1/1]
DiffImageOverlap-fno: 1.00 [1/1]

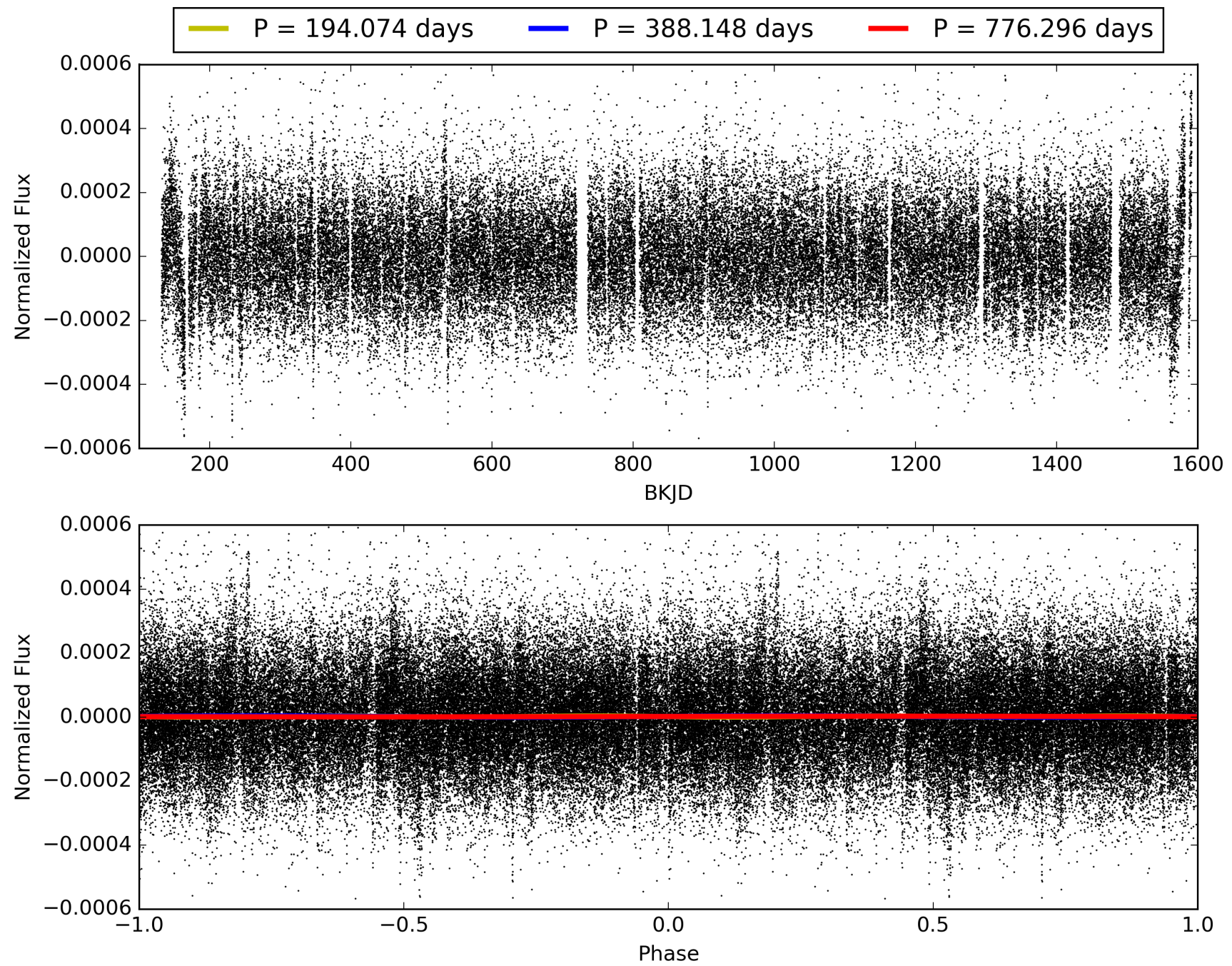
Software Revision: svn+ssh://murzim/repo/soc/tags/release/9.3.42@60958 -- Date Generated: 31-Jan-2016 23:48:06 Z

This Data Validation Report Summary was produced in the Kepler Science Operations Center Pipeline at NASA Ames Research Center

TCE 011122479-01, PDC Light Curves

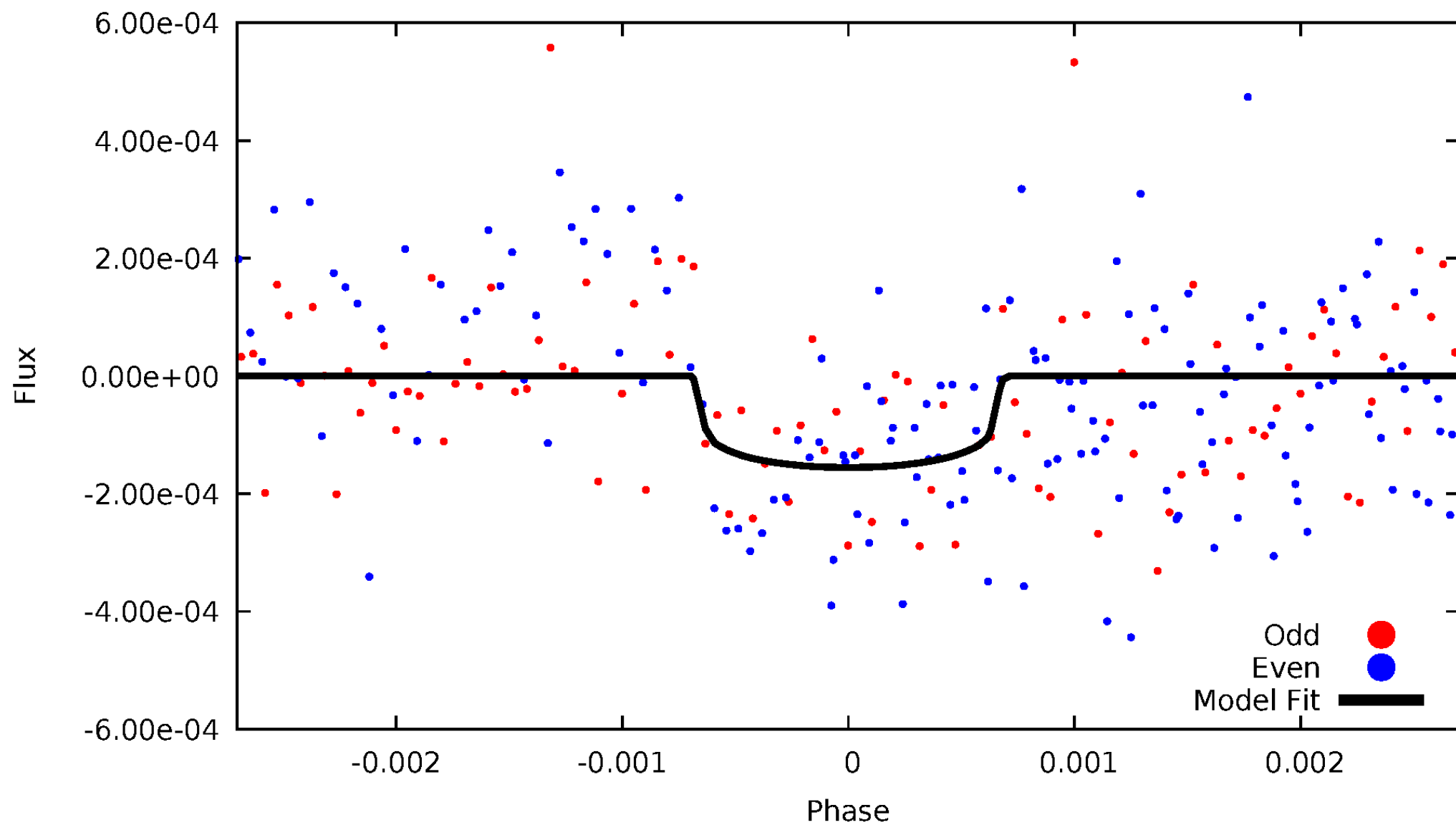


TCE 011122479-01



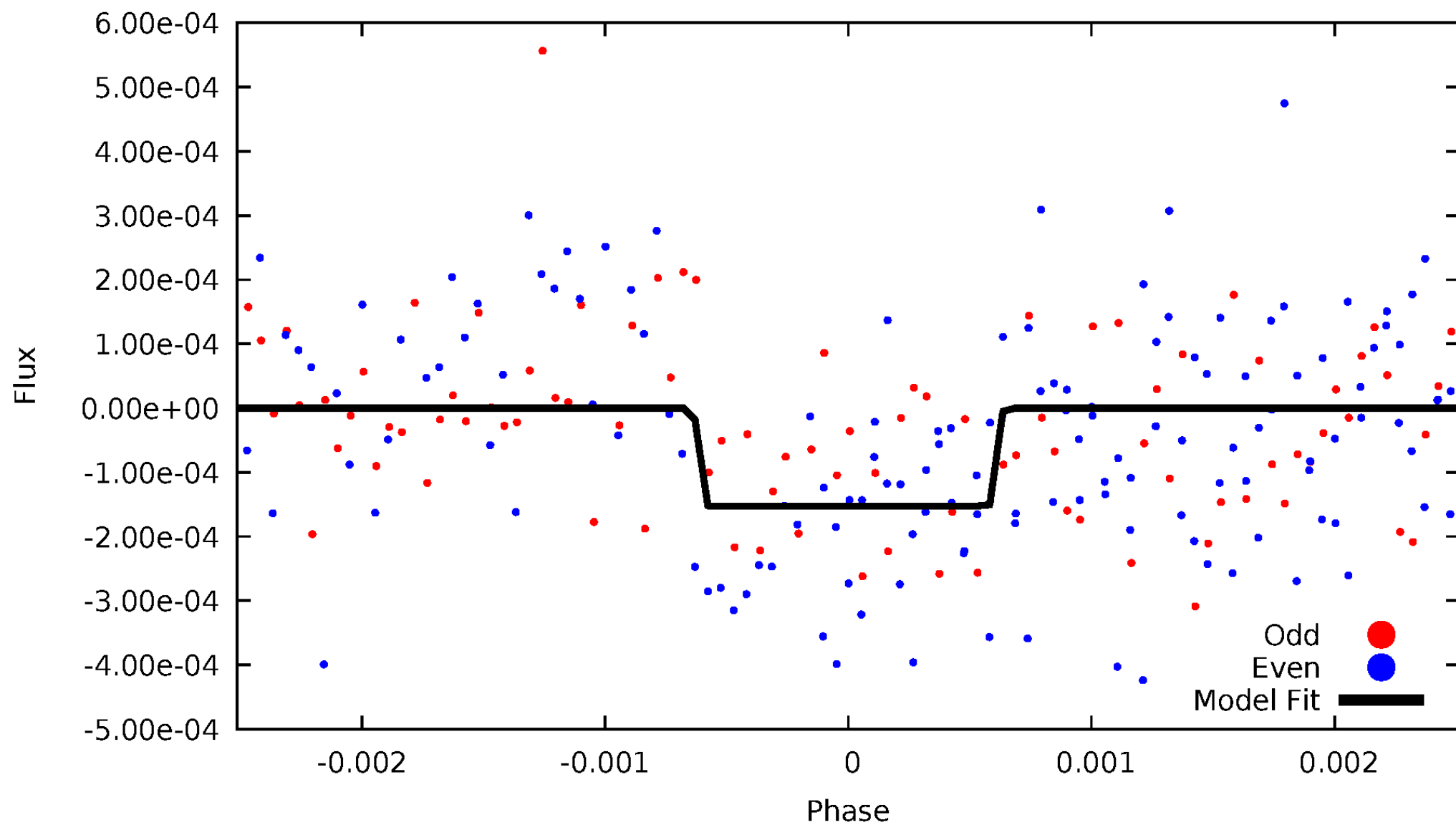
DV Odd/Even

TCE 011122479-01

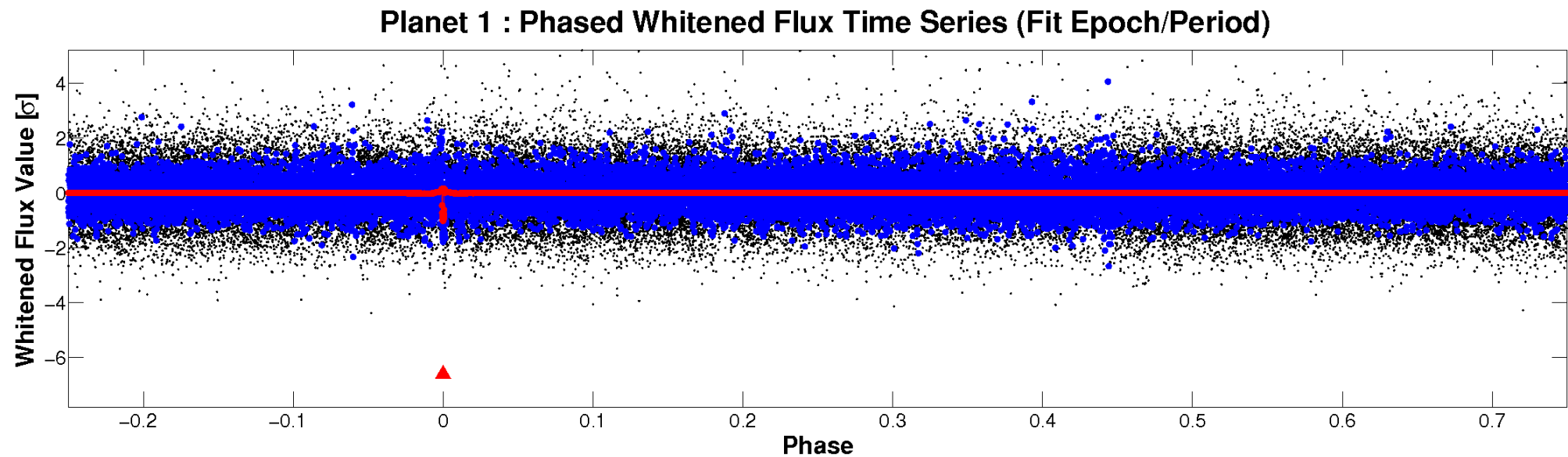
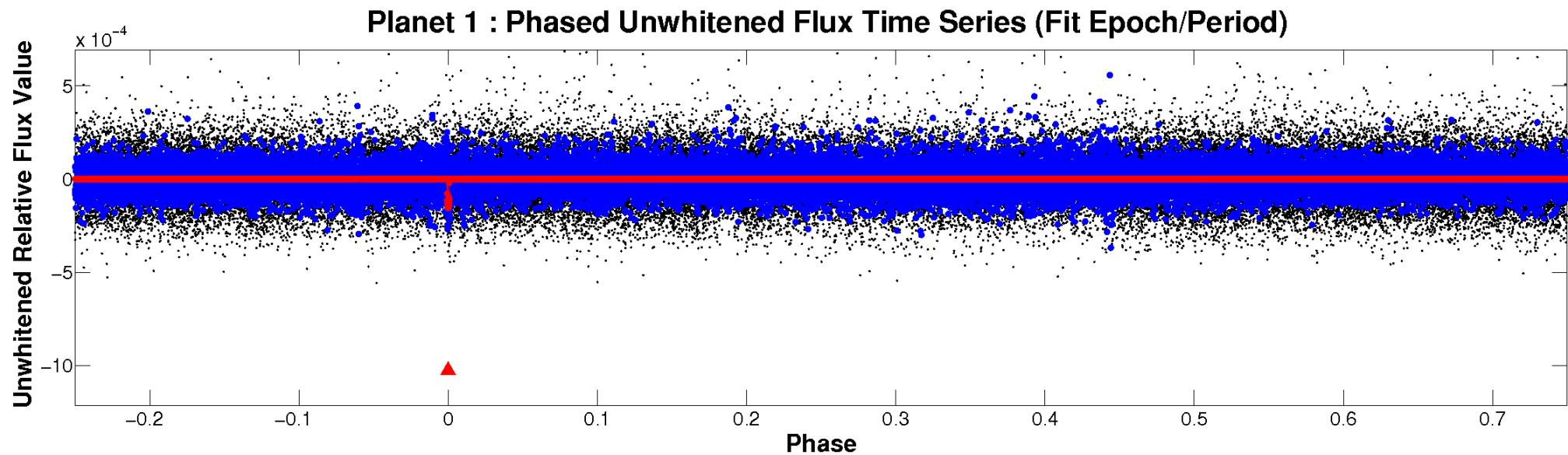


ALT Odd/Even

TCE 011122479-01

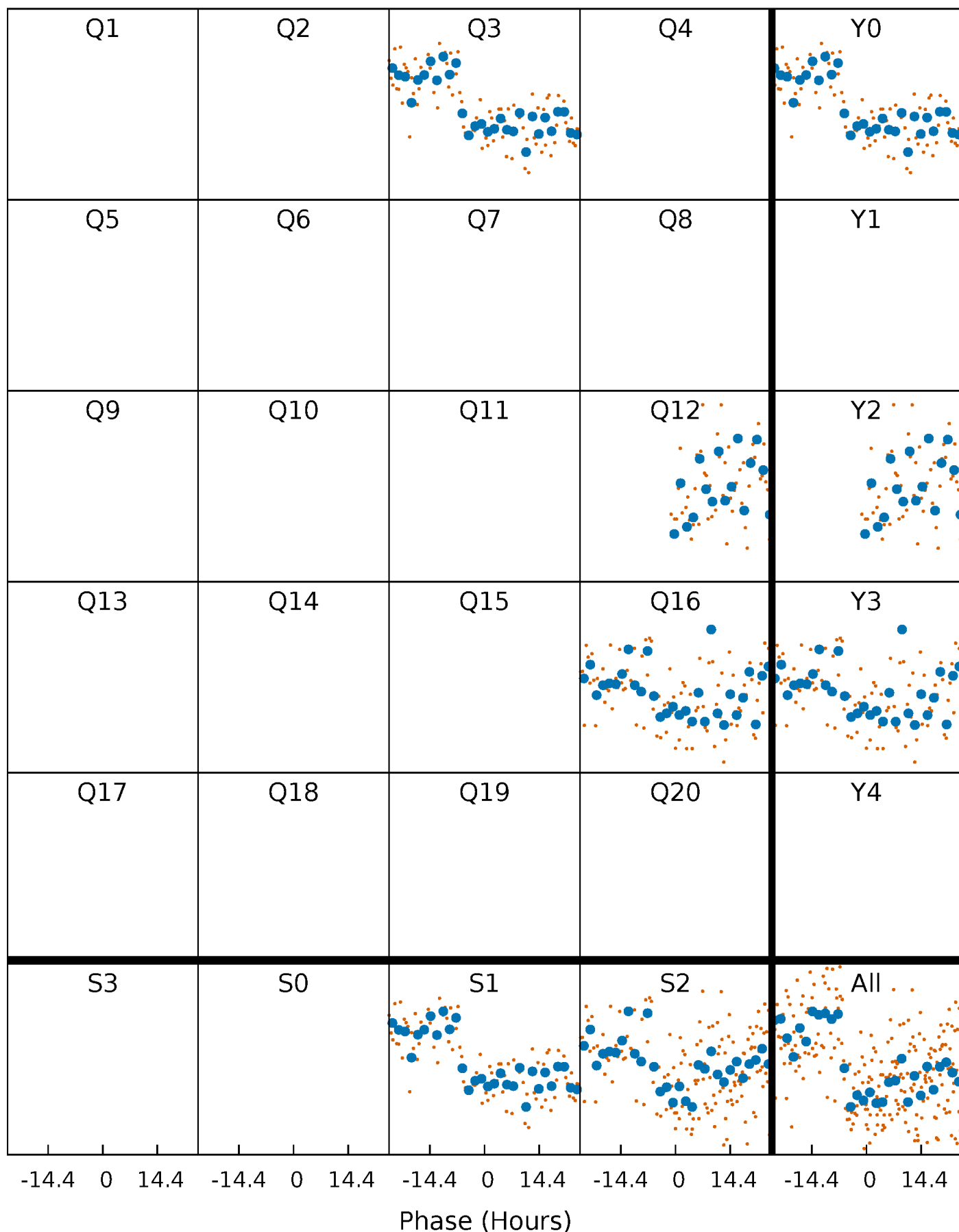


Non-Whitened Vs. Whitened Light Curve



PDC Quarter-Phased Transit Curves

TCE 011122479-01 P=388.148087 Days $T_0=346.006847$ (BKJD)



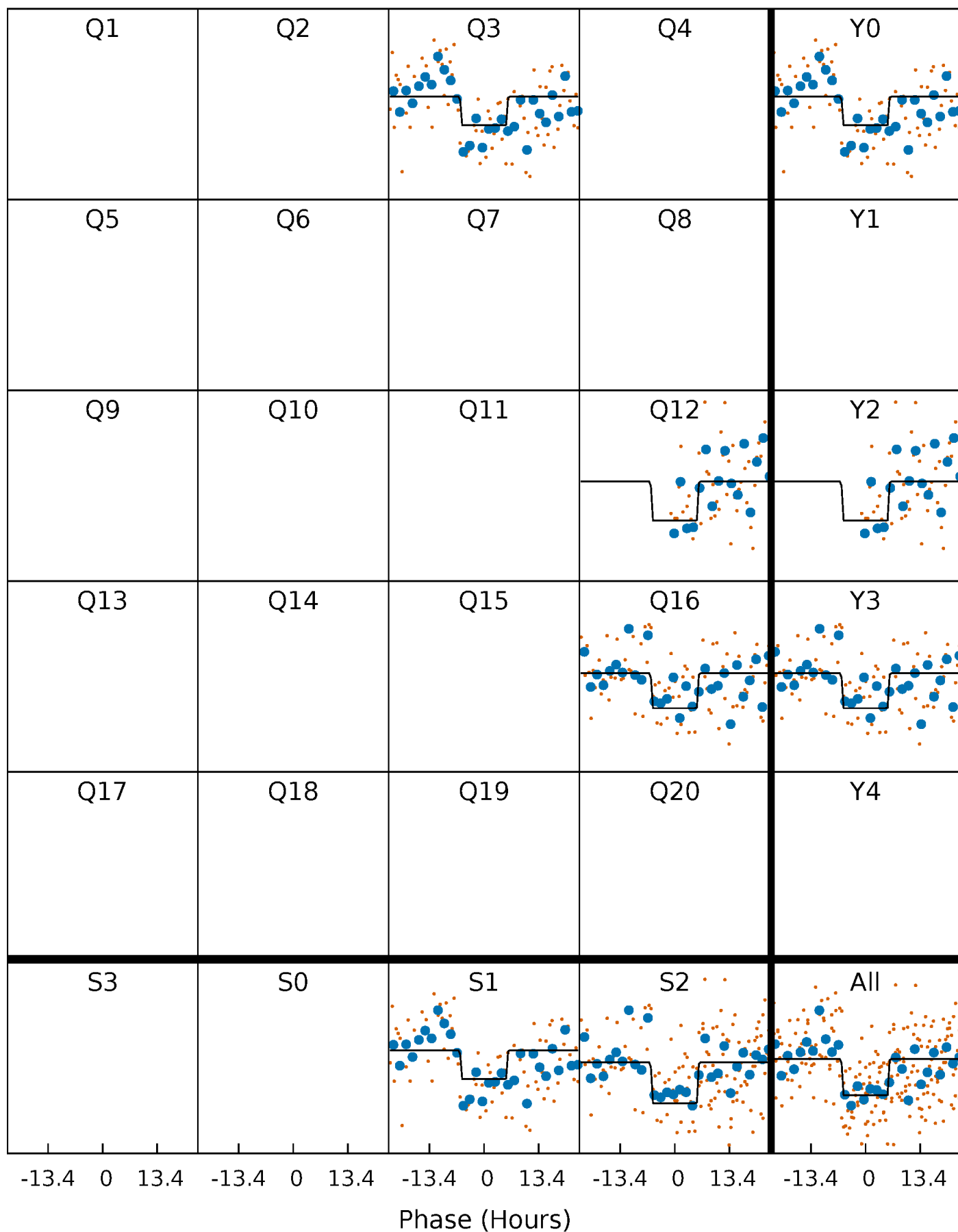
DV Quarter-Phased Transit Curves

TCE 011122479-01 P=388.148087 Days $T_0=346.006847$ (BKJD)



Alt. Detrend Quarter-Phased Transit Curves

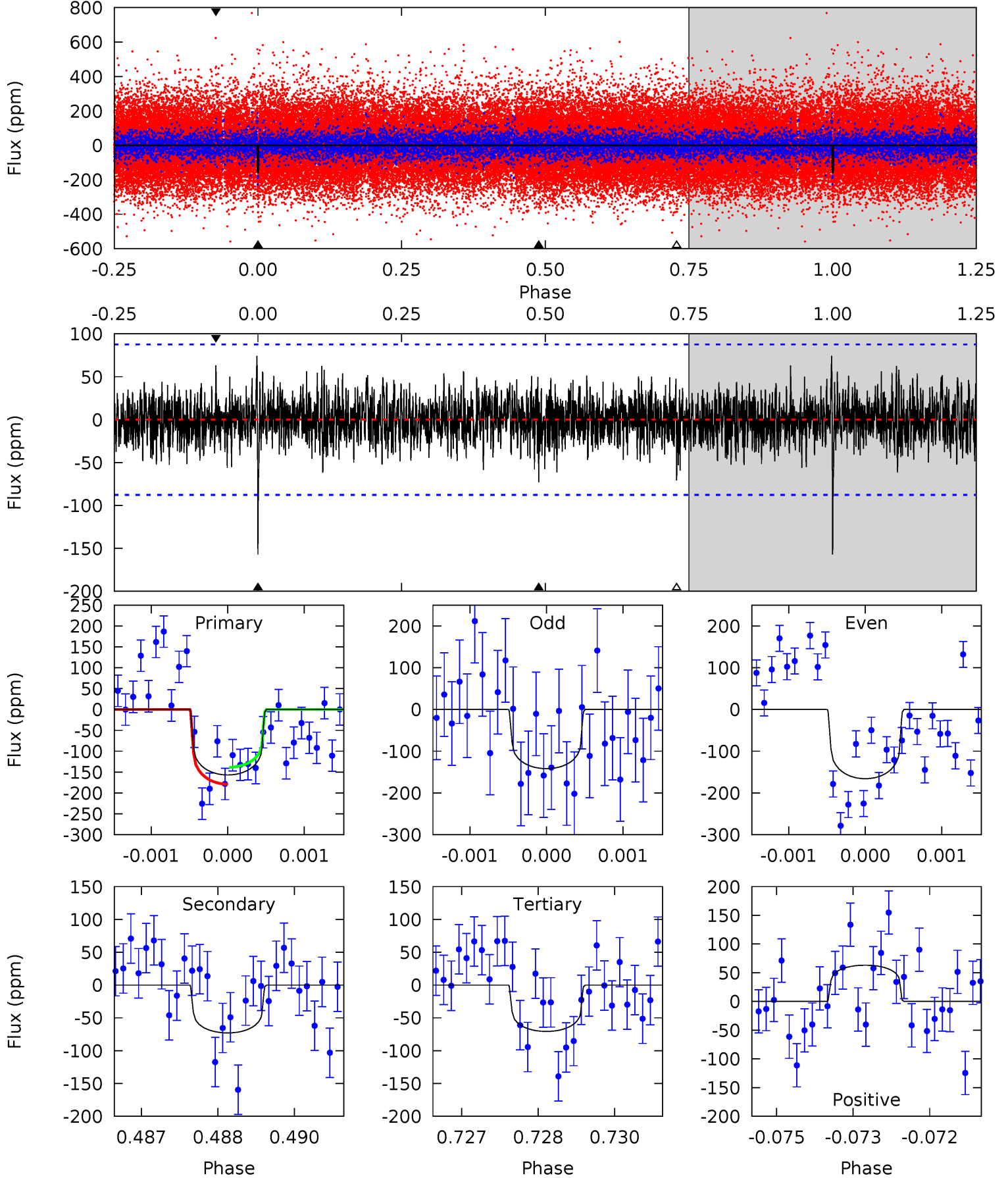
TCE 011122479-01 P=388.135472 Days $T_0=346.021710$ (BKJD)



DV Model-Shift Uniqueness Test

011122479-01, P = 388.148087 Days, E = 346.006847 Days

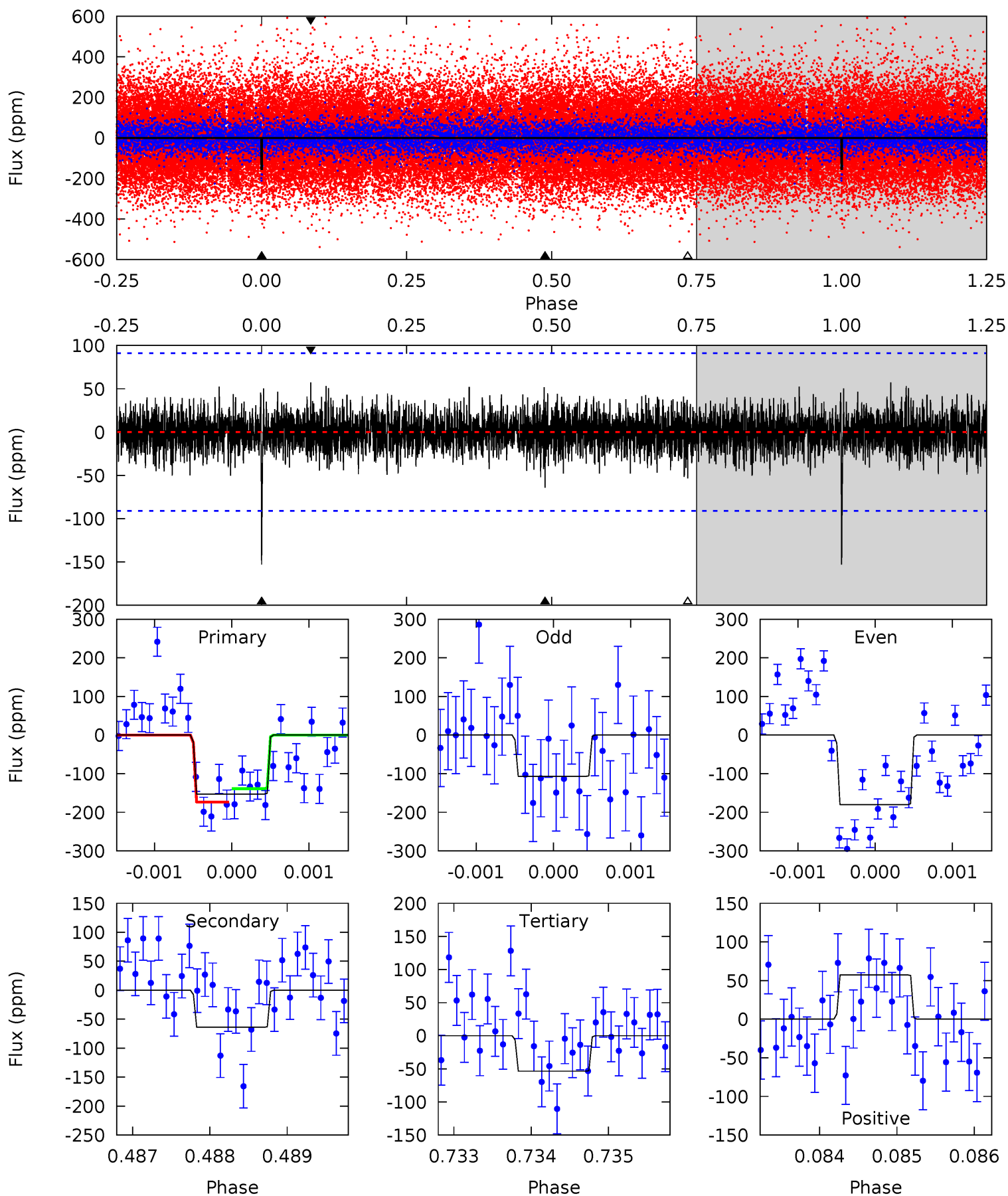
Pri	Sec	Ter	Pos	FA ₁	FA ₂	F _{Red}	Pri-Ter	Pri-Pos	Sec-Ter	Sec-Pos	Odd-Evn	DMM	Shape	TAT
9.65	4.48	4.35	3.89	5.39	3.19	1.14	5.30	5.76	0.14	0.60	0.73	1.08	0.32	1.24



Alt Model-Shift Uniqueness Test

011122479-01, P = 388.135472 Days, E = 346.021710 Days

Pri	Sec	Ter	Pos	FA ₁	FA ₂	F _{Red}	Pri-Ter	Pri-Pos	Sec-Ter	Sec-Pos	Odd-Evn	DMM	Shape	TAT
9.08	3.80	3.18	3.41	5.41	3.22	0.89	5.91	5.68	0.62	0.39	2.11	1.09	0.27	1.01



Stellar Parameters For KIC 011122479

	$T_{\text{eff}}(K)$	$\log(g)$	[Fe/H]	$R (R_{\odot})$	$M(M_{\odot})$	$p_{\star} (\text{g}\cdot\text{cm}^{-3})$
	6010^{+179}_{-161}	$3.717^{+0.344}_{-0.108}$	$-0.140^{+0.350}_{-0.250}$	$2.681^{+0.439}_{-1.025}$	$1.367^{+0.206}_{-0.309}$	$0.100^{+0.229}_{-0.033}$
	+3%/-3%	+9%/-3%	+250%/-179%	+16%/-38%	+15%/-23%	+229%/-33%
Source	PHO1	FLK73	KIC0	DSEP		

KIC = Kepler Input Catalog; PHO = Photometry; SPE = Spectroscopy; AST = Asteroseismology
 TRA = Transits; DESP = Dartmouth Models; MULT = Multiple Models

Secondary Eclipse Parameters for KIC 011122479-01 / KOI

Detrend	Depth (ppm)	$R_p (R_{\oplus})$	$T_{max} (K)$	$T_{obs} (K)$	A_{obs}
DV	-73 ± 16	$3.67^{+2.30}_{-1.97}$	555^{+35}_{-51}	4910^{+2032}_{-826}	3999^{+14410}_{-2557}
Alt.	-64 ± 17	$3.48^{+2.38}_{-1.94}$	554^{+34}_{-50}	4831^{+2453}_{-870}	3742^{+17136}_{-2411}

T_{max} = Theoretical Maximum Planetary Temperature

T_{obs} = Observed Planetary Temperature (Assuming A=0.3)

A_{obs} = Observed Albedo (Assuming T=0)

If a secondary eclipse is present, the system is likely an EB if $T_{obs} \gg T_{max}$ AND $A_{obs} \gg 1.0$

DV Centroid Data

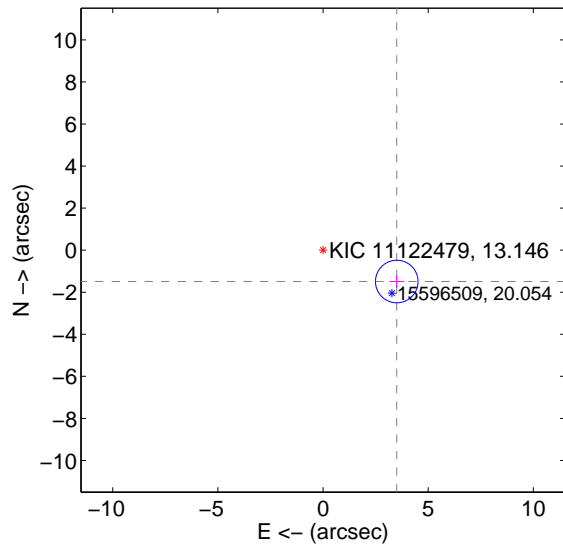
Supplemental centroid analysis for 011122479-01. Kepler magnitude: 13.15. Transit SNR 7.20

There are 1 quarters with good PRF difference image offsets

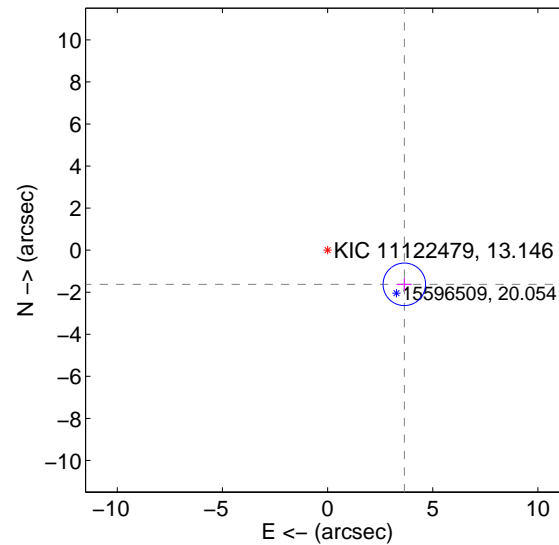
The direct PRF centroid is offset from the target star catalog position by about 0.20 arcsec

	Distance in arcsec	Distance / σ	Δ RA	Δ Dec
PRF-fit source offset from OOT	3.810 ± 0.337	11.29	-3.506 ± 0.345	-1.491 ± 0.294
PRF-fit source offset from KIC position	3.995 ± 0.337	11.86	-3.650 ± 0.345	-1.624 ± 0.294
photometric centroid source offset	2.76 ± 2.28	1.21	2.62 ± 2.31	0.87 ± 1.87

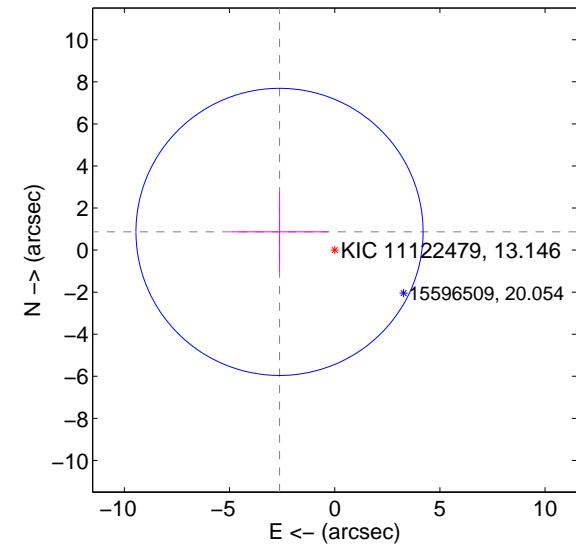
offset from difference PRF-fit to OOT PRF-fit



offset from difference PRF-fit to KIC position

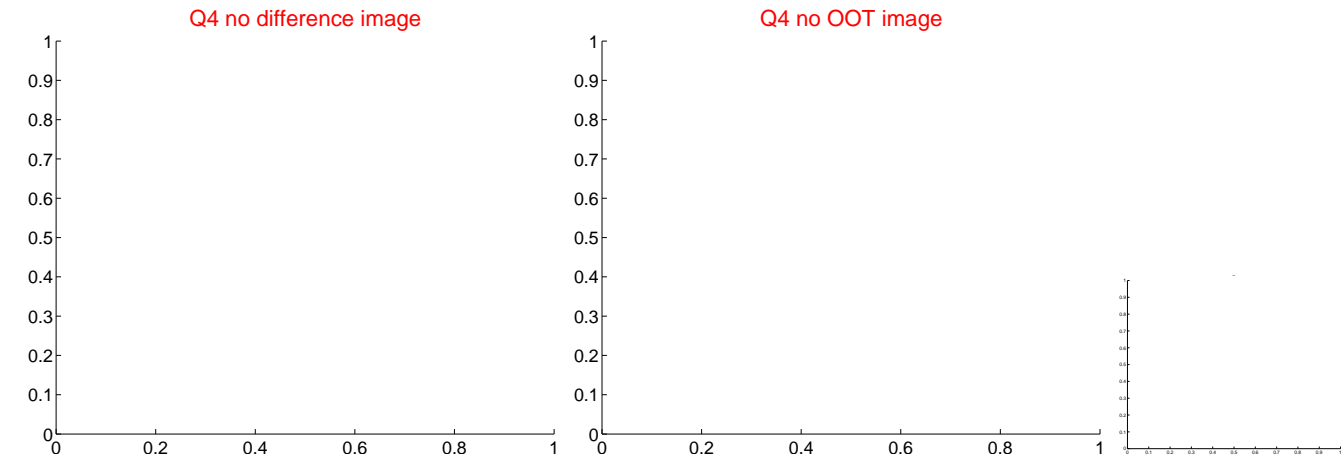
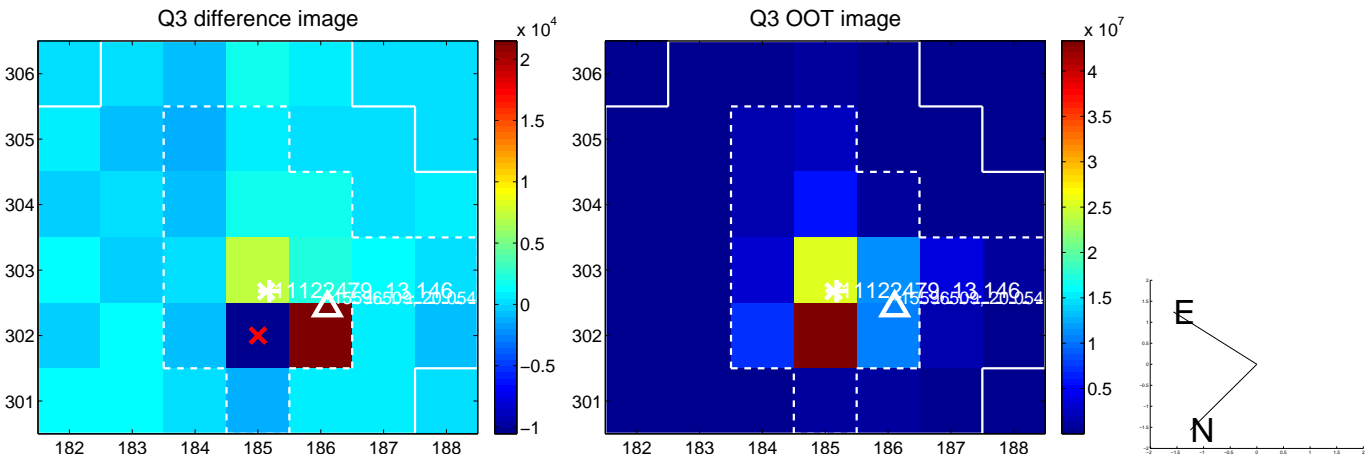
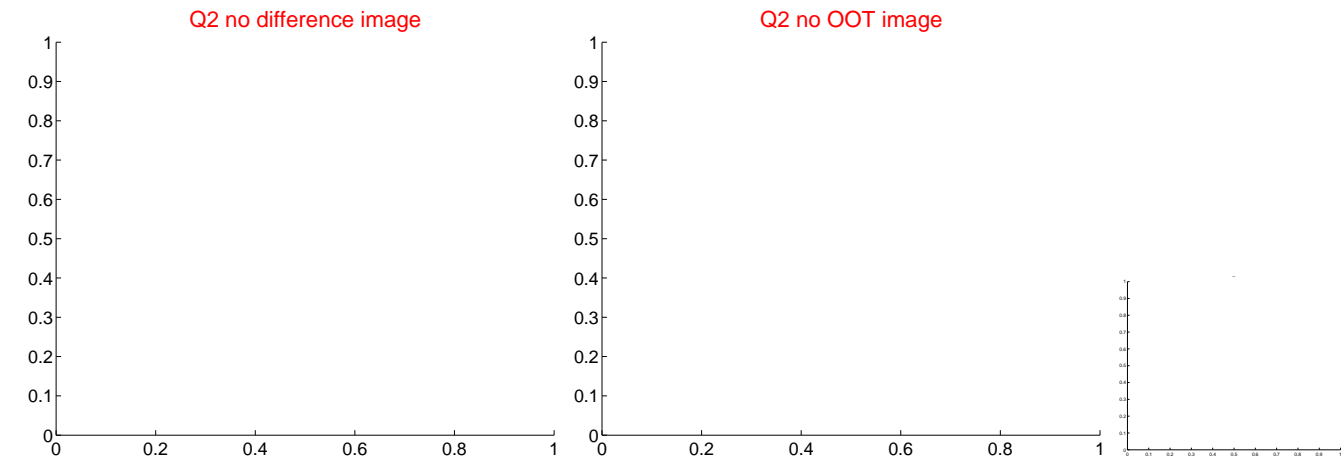
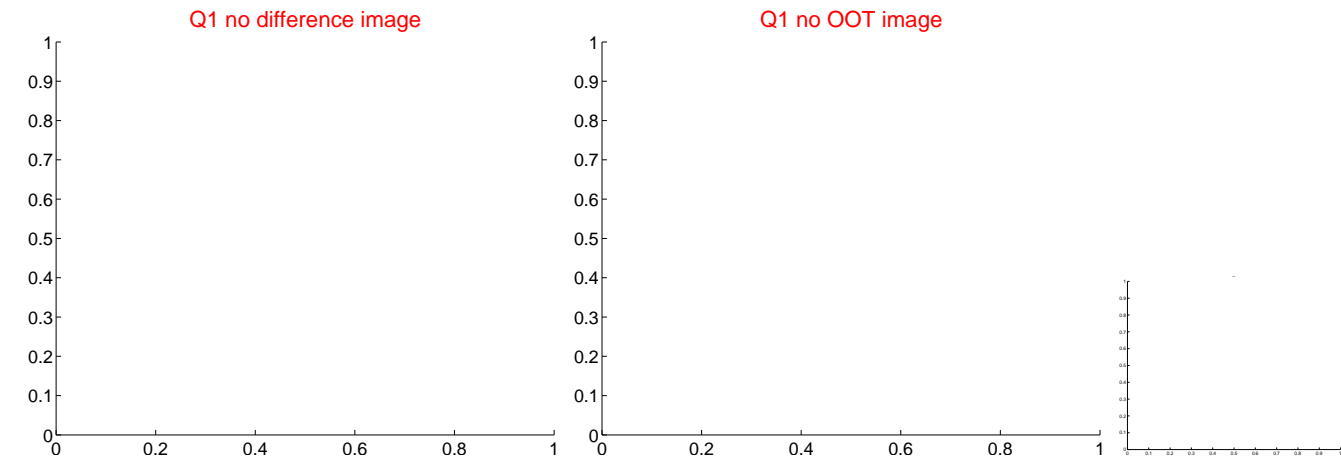


offset from photometric centroids

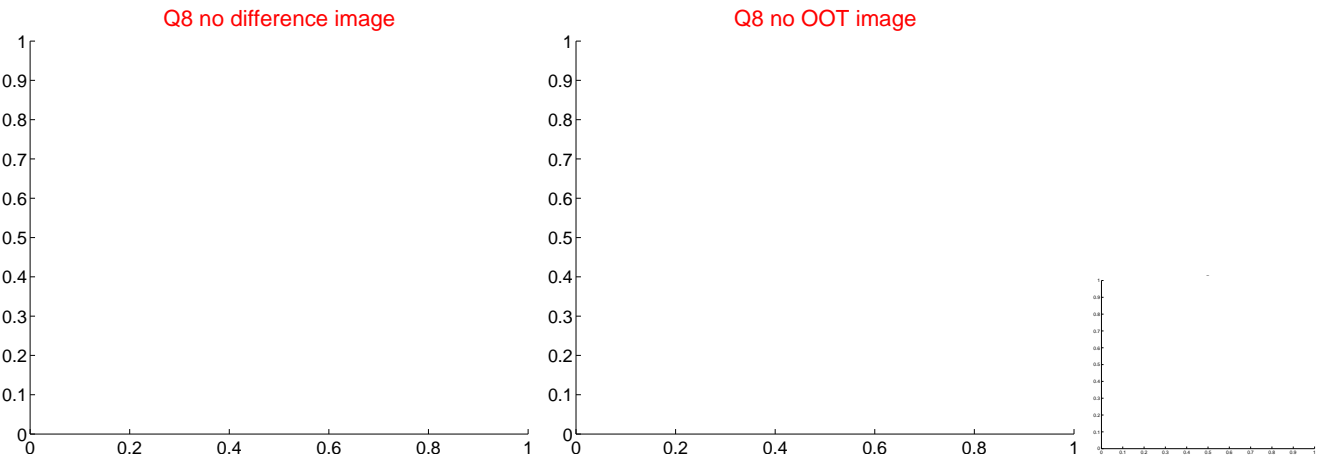
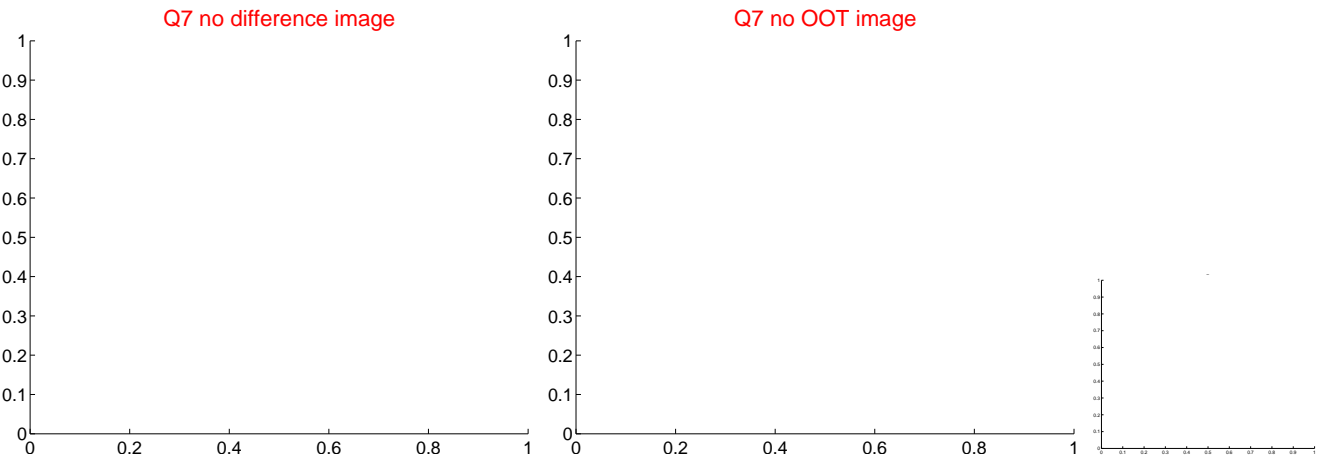
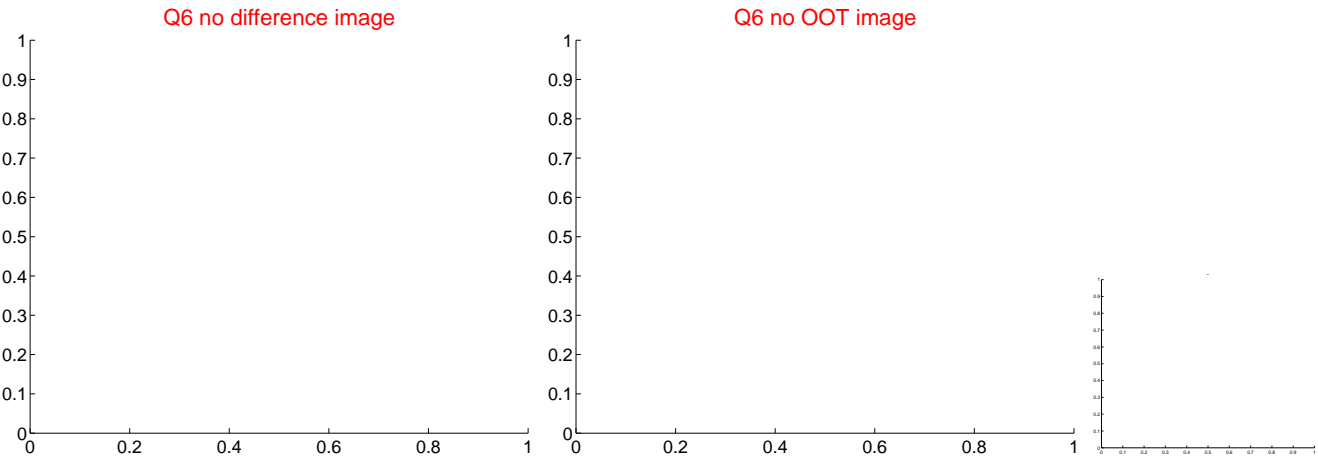
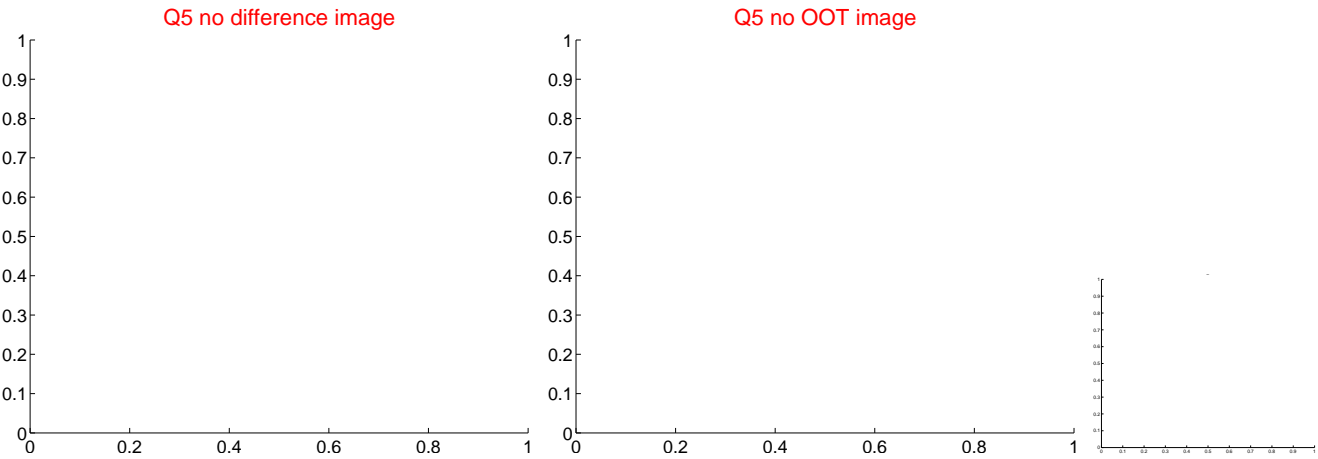


Centroid source offsets from the target star reconstructed from PRF and photometric centroids. Sky blue crosses: good quarterly centroid offsets; Vermillion crosses: bad quarterly centroid offsets; magenta cross: average over quarters. Length of the crosses: one- σ uncertainty. Blue circle: three- σ . Red *: target star. Blue *: Other stars. Text next to a star gives its KIC ID and kepmag. KIC IDs > 15,000,000 are from the UKIRT catalog.

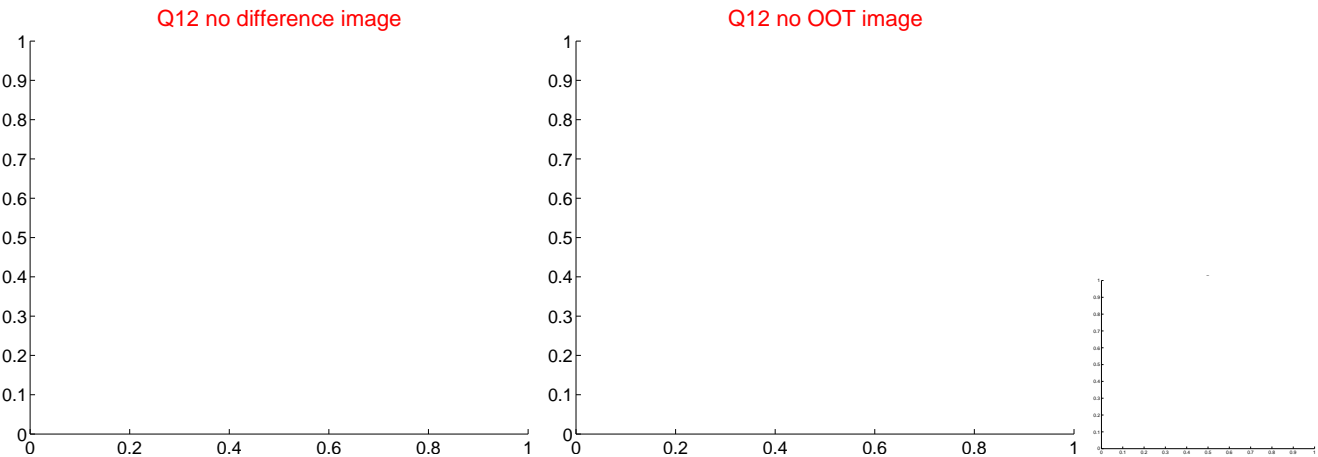
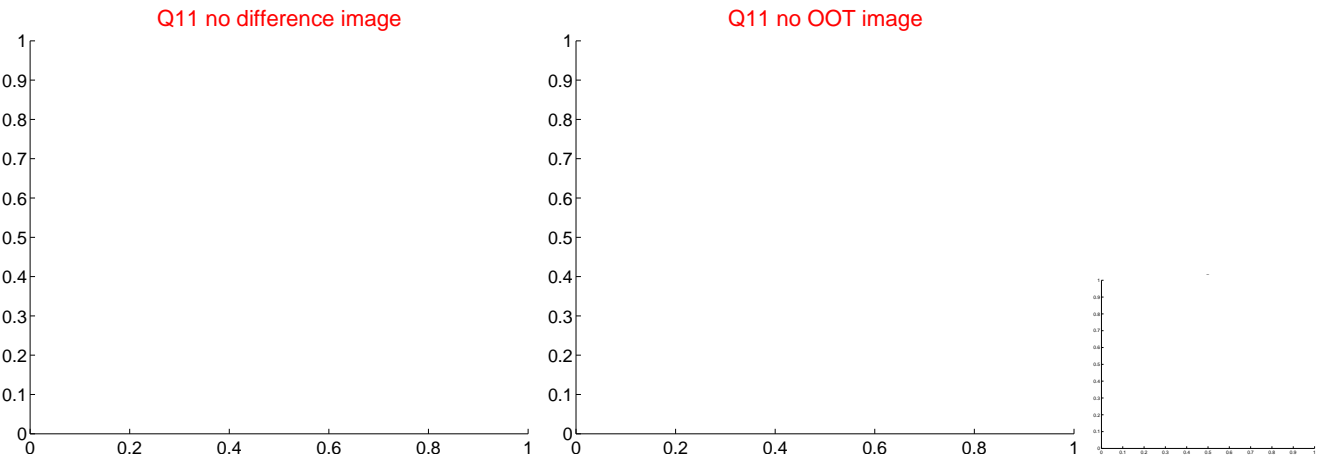
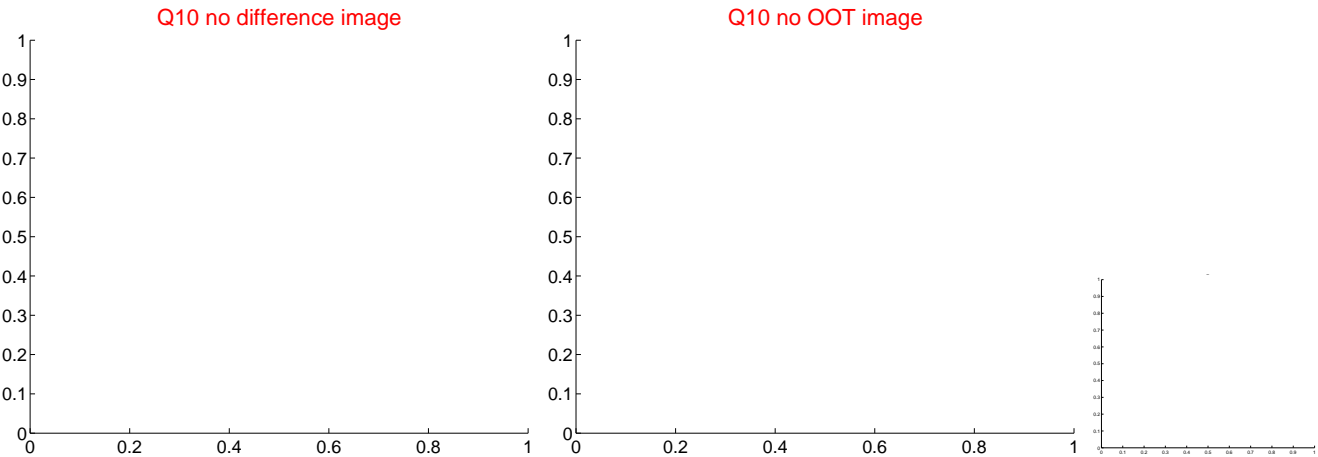
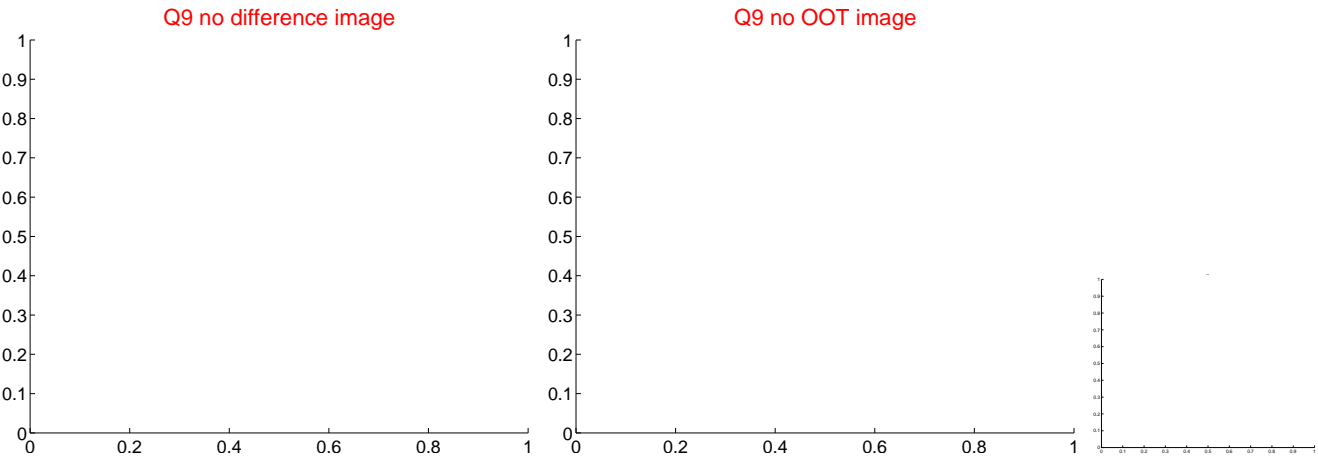
white \times : KIC target position; +: OOT centroid; \triangle : difference centroid. red \times : large negative pixel value.



white \times : KIC target position; $+$: OOT centroid; \triangle : difference centroid. red \times : large negative pixel value.



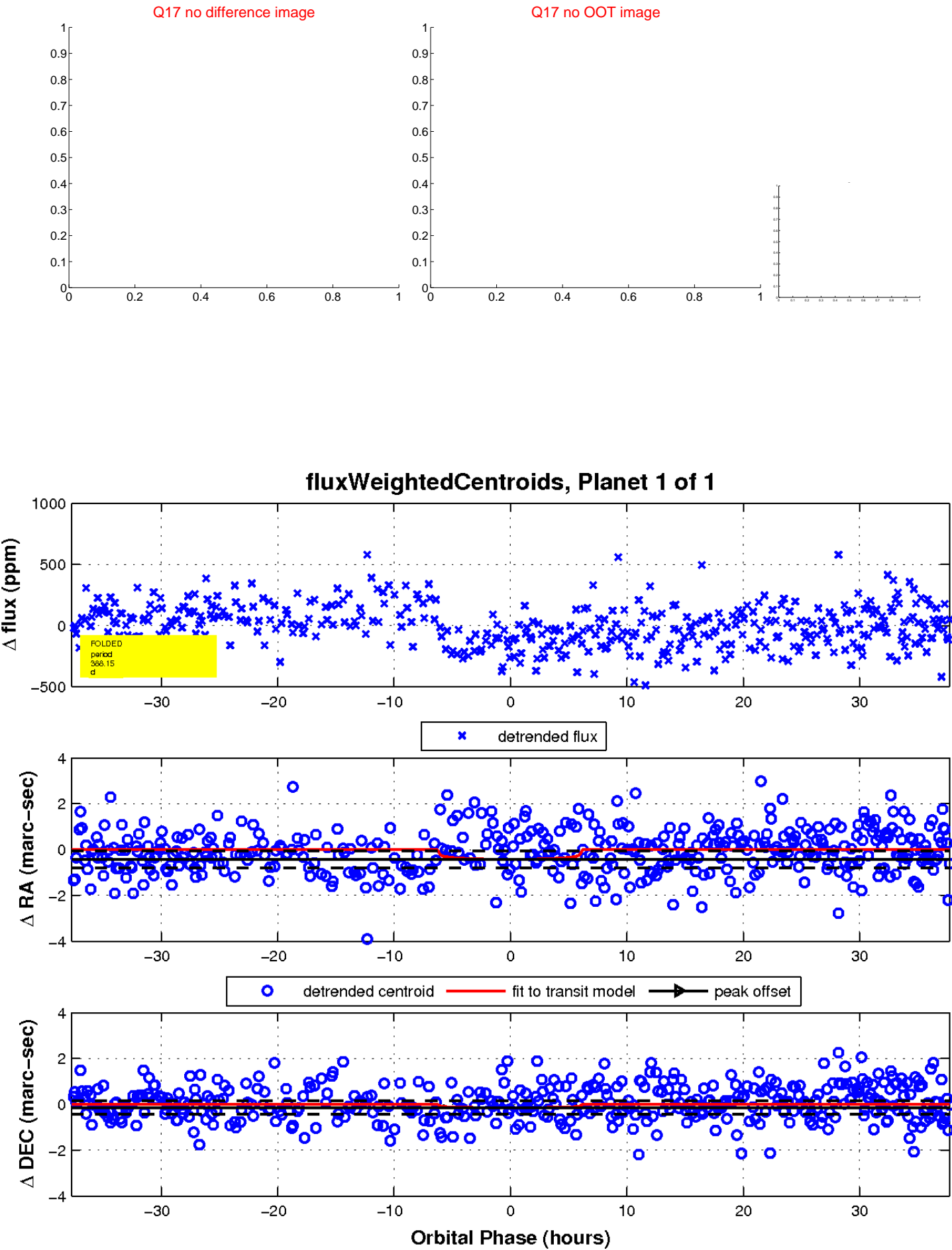
white \times : KIC target position; $+$: OOT centroid; \triangle : difference centroid. red \times : large negative pixel value.



white \times : KIC target position; $+$: OOT centroid; \triangle : difference centroid. red \times : large negative pixel value.



white \times : KIC target position; $+$: OOT centroid; \triangle : difference centroid. red \times : large negative pixel value.



UKIRT Image

Declination

