

KIC 011044826

Q1-17 DR25 TCE Parameters

TCE	Run Type	KOI?	Period (Days)	Epoch (BKJD)	Depth (ppm)	Duration (Hours)	MES	SNR	R_{\star} (R_{\odot})	T_{\star} (K)	R_p (R_{\oplus})	S_p (S_{\oplus})
011044826-01	OBS	No	215.555175	267.742898	184.7	7.544	7.5	8.0	1.04	6412	1.50	3.13

Robovetter Results

TCE	Run Type	Disp	Score	N	S	C	E	Comments
011044826-01	OBS	FP	0.00	1	0	0	0	INDIV_TRANS_MARSHALL_SKYE--CENT_FEW_DIFFS

Notes: OBS = Observed. INJ = Injected. INV = Inverted. SCR = Scrambled.

N = Not Transit-Like. S = Stellar Eclipse. C = Centroid Offset. E = Ephemeris Match.

See http://exoplanetarchive.ipac.caltech.edu/docs/API_kepcandidate_columns.html#proj_disp_col for comment definitions.

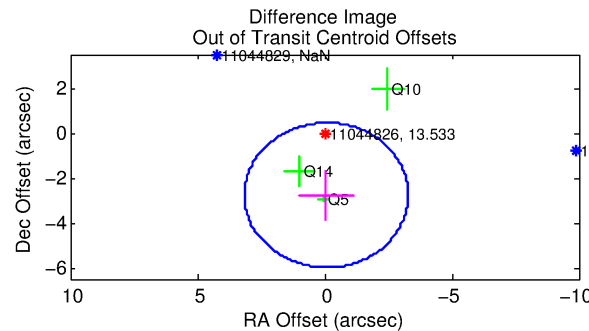
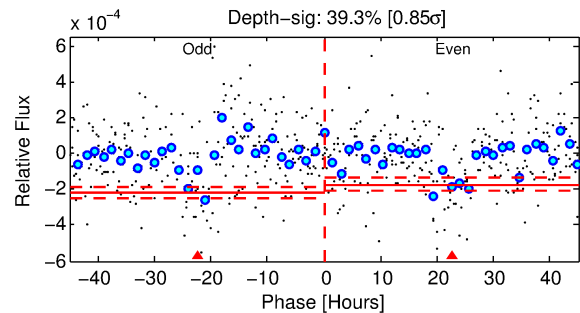
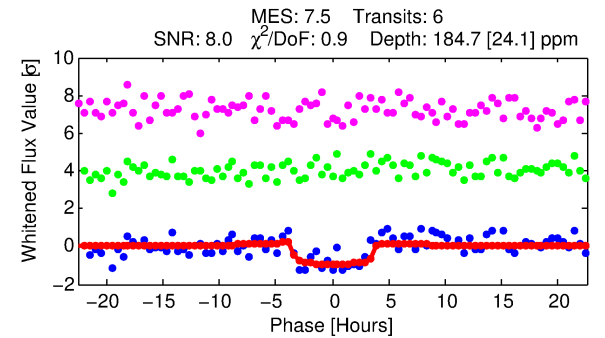
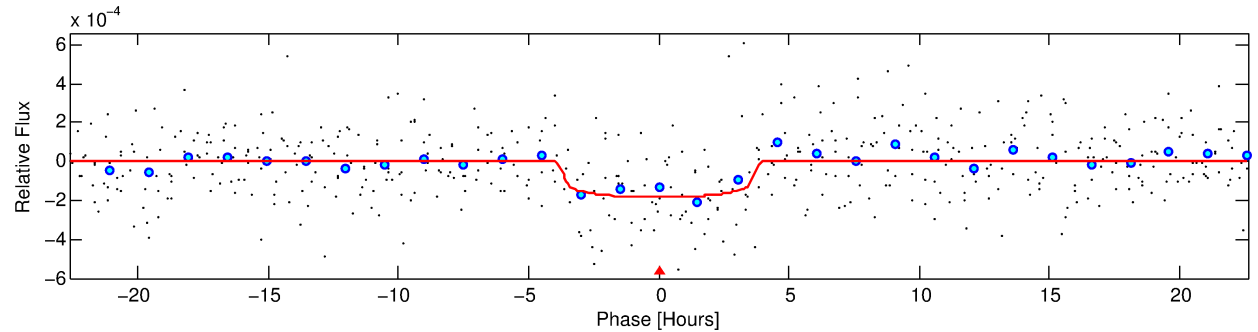
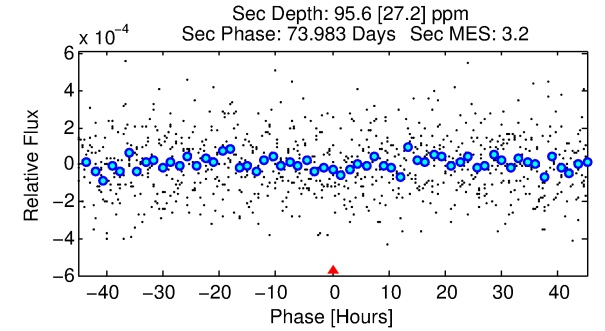
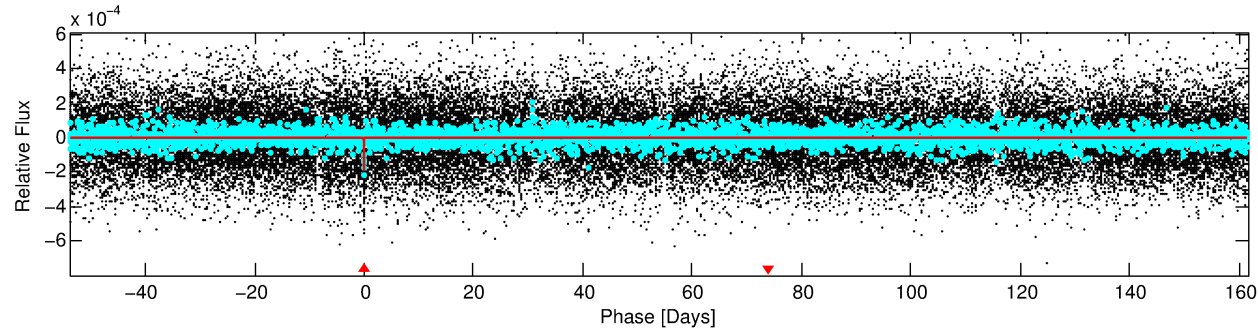
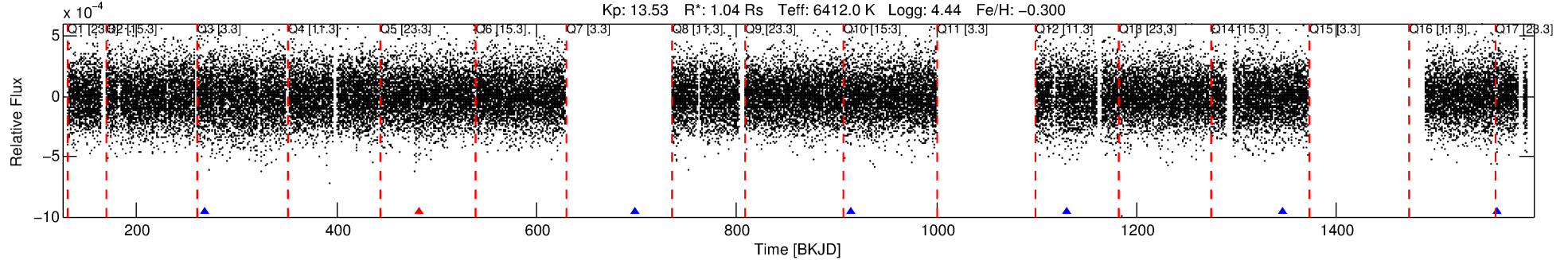
Ephemeris Match Information For 011044826-01

No Significant Match Found

DV One-Page Summary

KIC: 11044826 Candidate: 1 of 1 Period: 215.555 d
KOI: K04401 Corr: No Ephemeris Match

Kp: 13.53 R*: 1.04 Rs Teff: 6412.0 K Logg: 4.44 Fe/H: -0.300



DV Fit Results:

Period = 215.55518 [0.00444] d
Epoch = 267.7429 [0.0162] BKJD
Rp/R* = 0.0132 [0.0127]
a/R* = 165.28 [864.14]
b = 0.67 [4.27]
Seff = 3.13 [1.30]
Teq = 339 [35] K
Rp = 1.50 [1.52] Re
a = 0.7235 [0.1952] AU
Ag = 12195.09 [24221.62] [0.50σ]
Teffp = 5510 [2688] K [1.92σ]

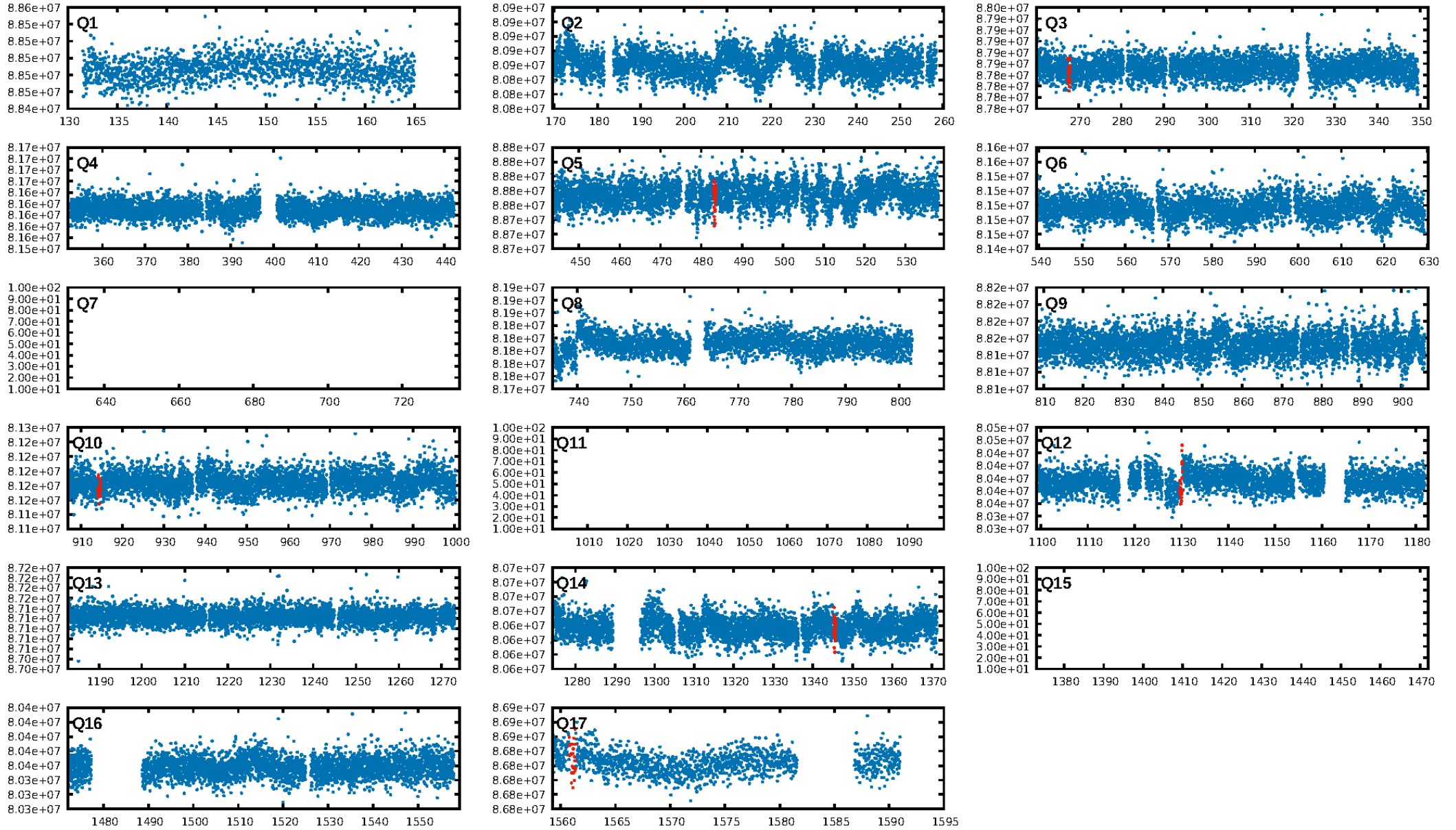
DV Diagnostic Results:

ShortPeriod-sig: N/A
LongPeriod-sig: N/A
ModelChiSquare2-sig: 45.5%
ModelChiSquareGof-sig: 99.9%
Bootstrap-pfa: 1.81e-12
RollingBand-fgt: 0.80 [4/5]
GhostDiagnostic-chr: -3.033
Centroid-sig: 54.4%
Centroid-so: 1.459 arcsec [0.83σ]
OotOffset-rm: 2.770 arcsec [2.58σ]
OotOffset-st: 2/0/0/1 [3]
KicOffset-rm: 2.792 arcsec [2.04σ]
KicOffset-st: 2/0/0/1 [3]
DiffImageQuality-fgm: 1.00 [3/3]
DiffImageOverlap-fno: 1.00 [3/3]

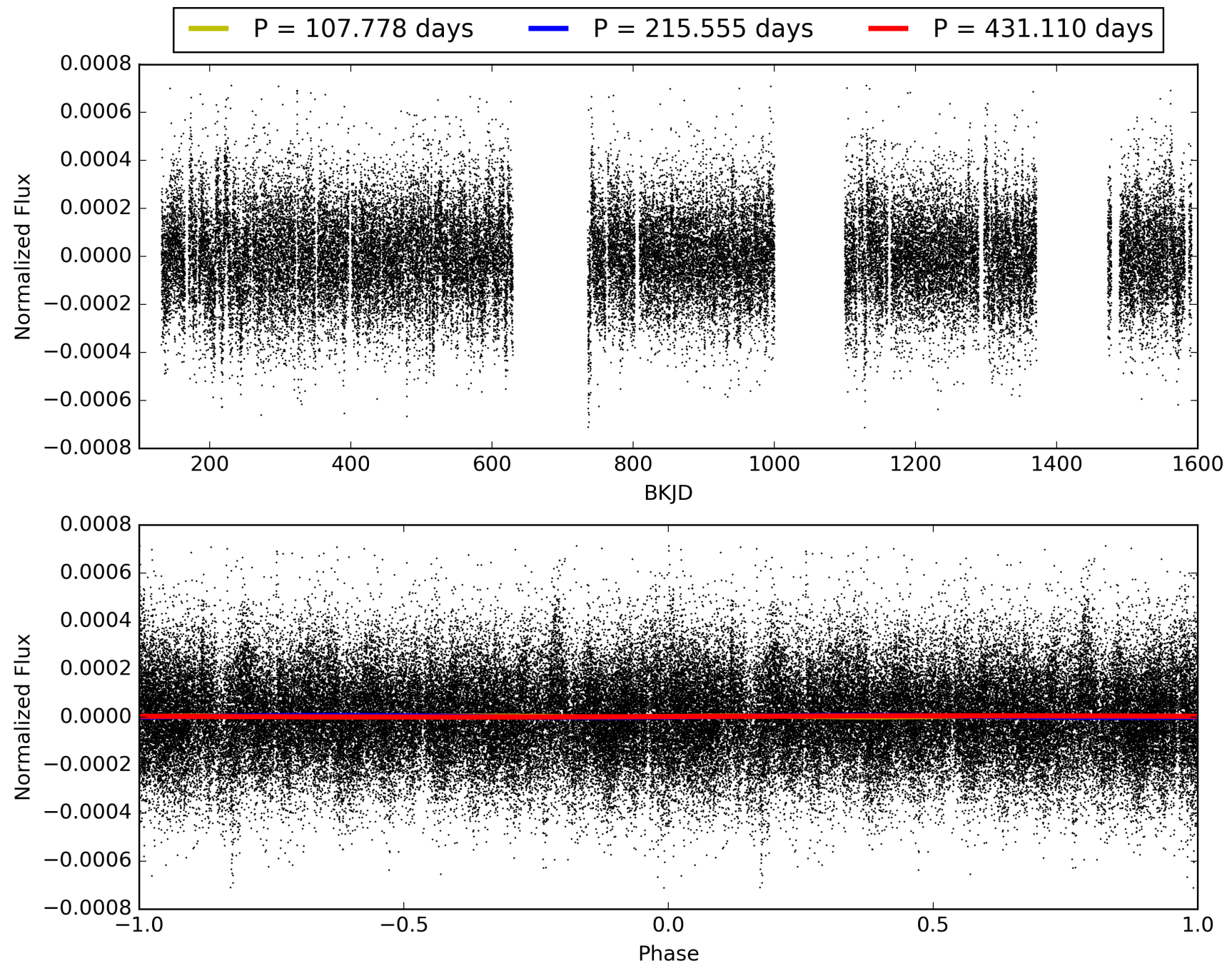
Software Revision: svn+ssh://murzim/repo/soc/tags/release/9.3.42@60958 -- Date Generated: 31-Jan-2016 01:12:55 Z

This Data Validation Report Summary was produced in the Kepler Science Operations Center Pipeline at NASA Ames Research Center

TCE 011044826-01, PDC Light Curves

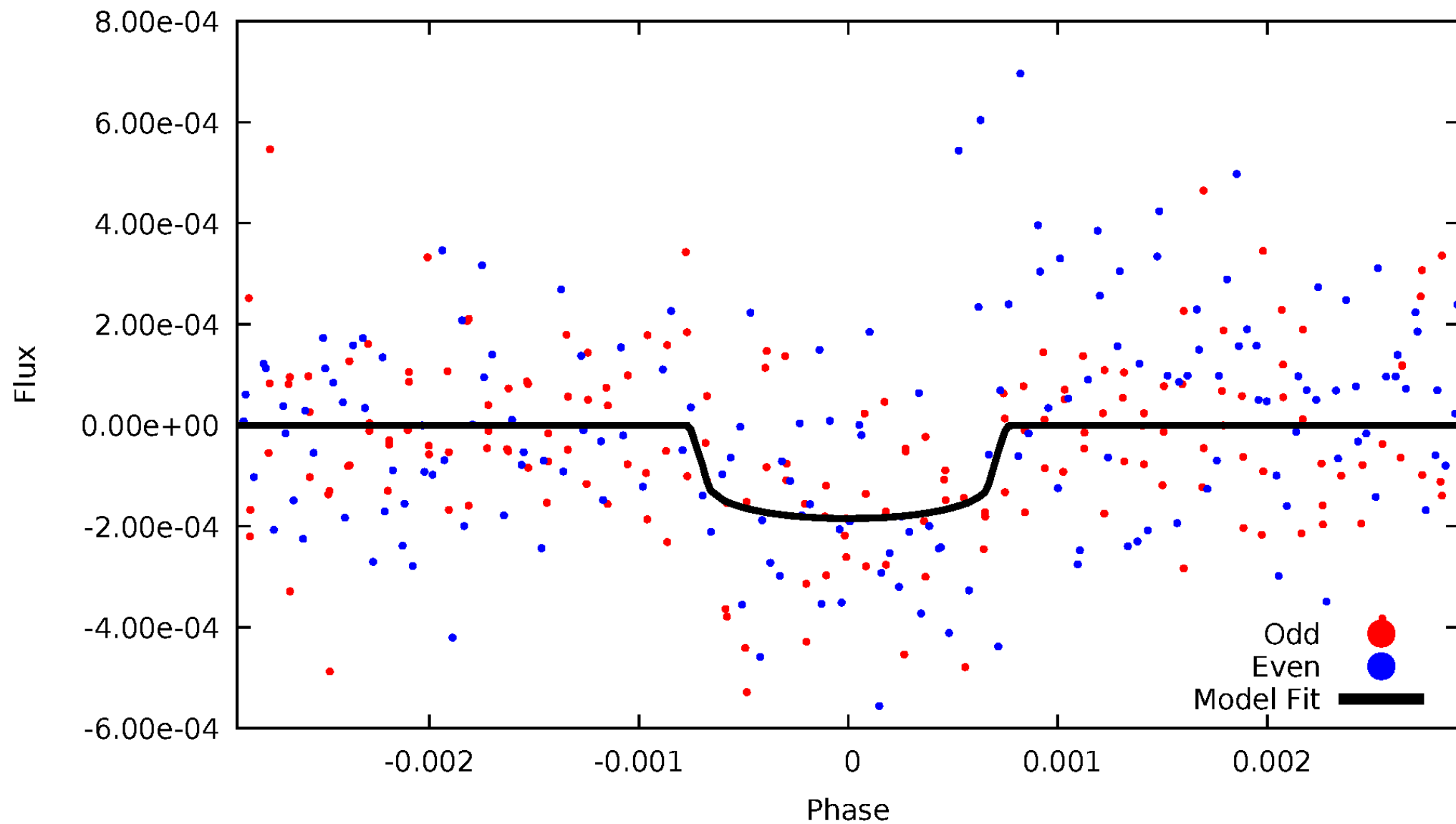


TCE 011044826-01



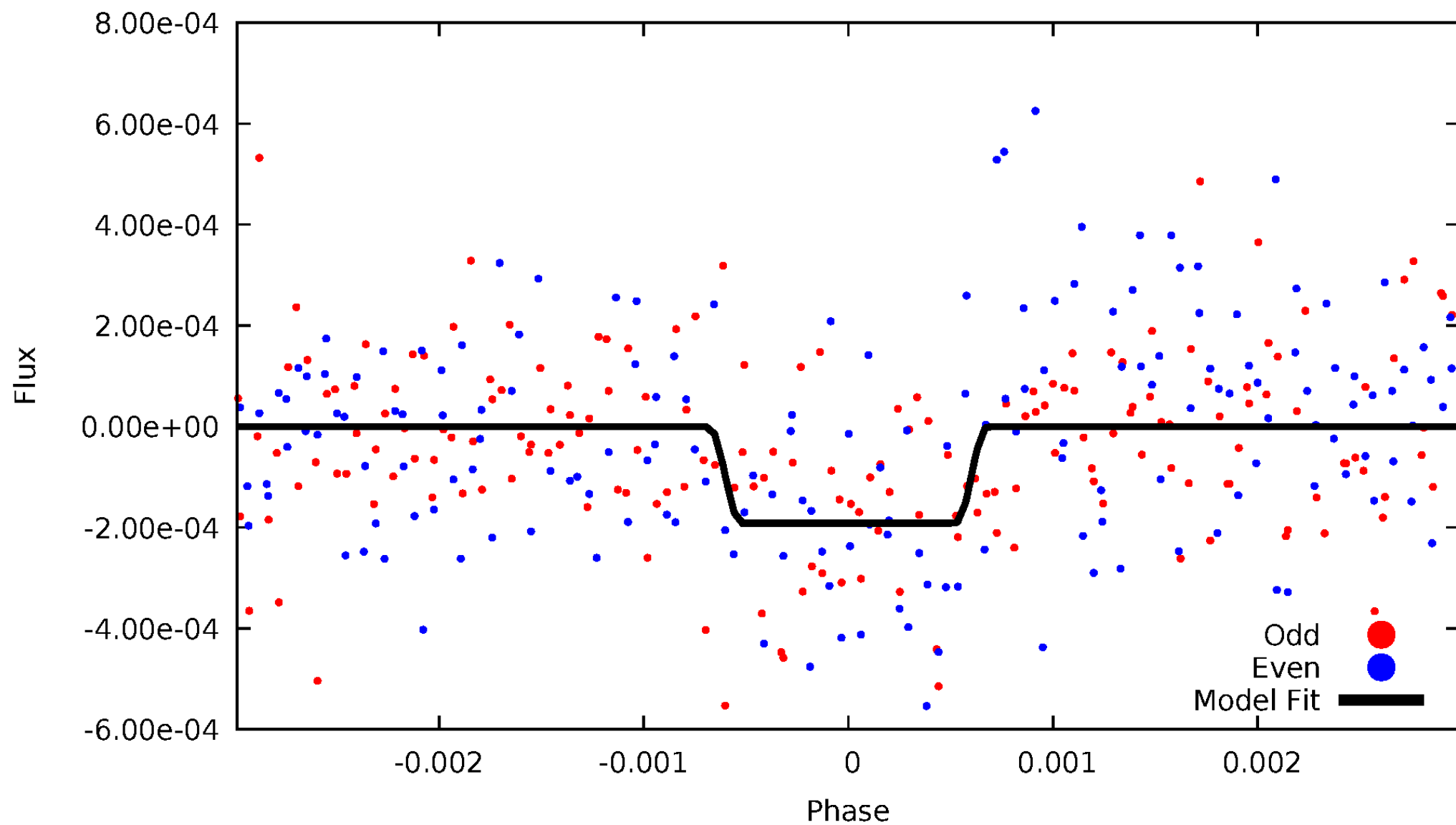
DV Odd/Even

TCE 011044826-01

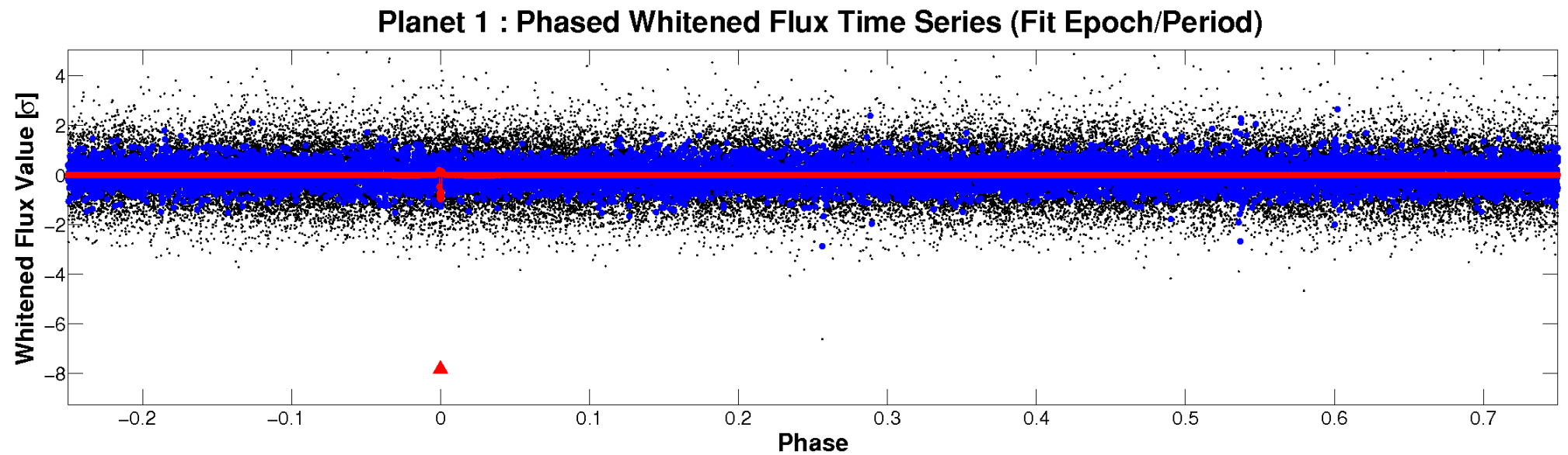
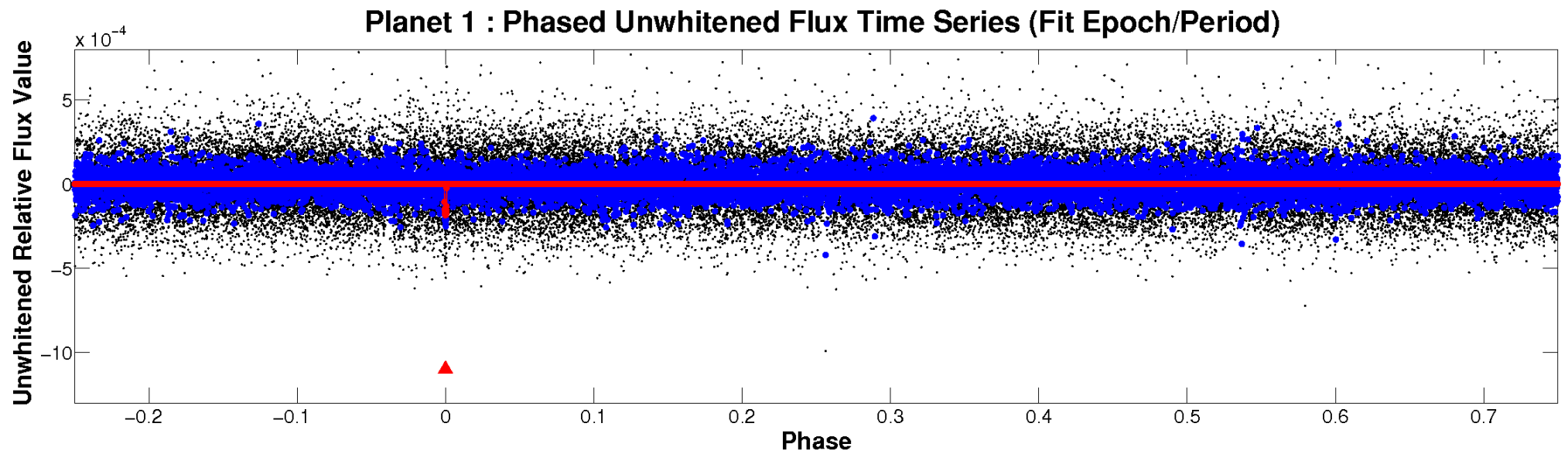


ALT Odd/Even

TCE 011044826-01

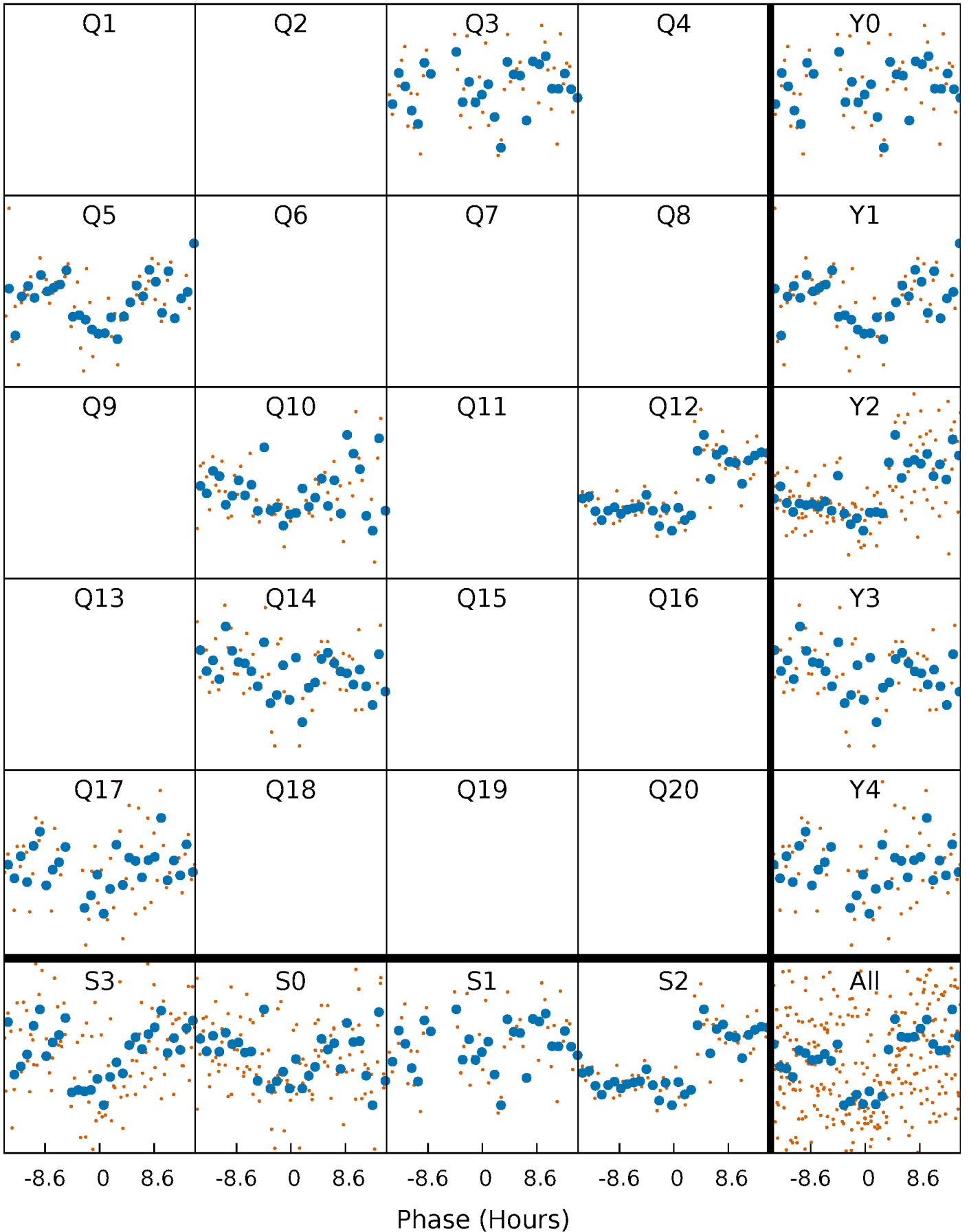


Non-Whitened Vs. Whitened Light Curve



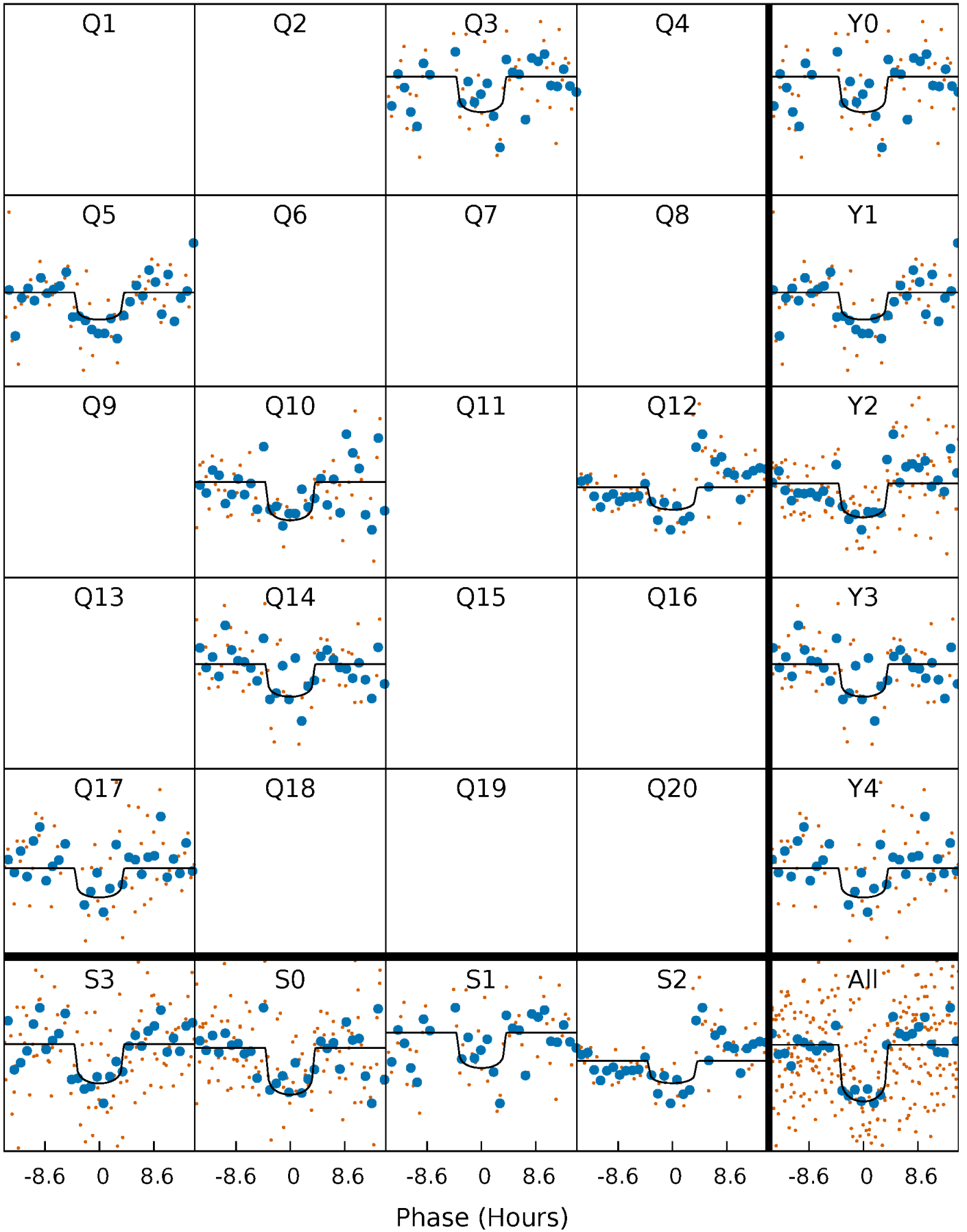
PDC Quarter-Phased Transit Curves

TCE 011044826-01 P=215.555175 Days $T_0=267.742898$ (BKJD)



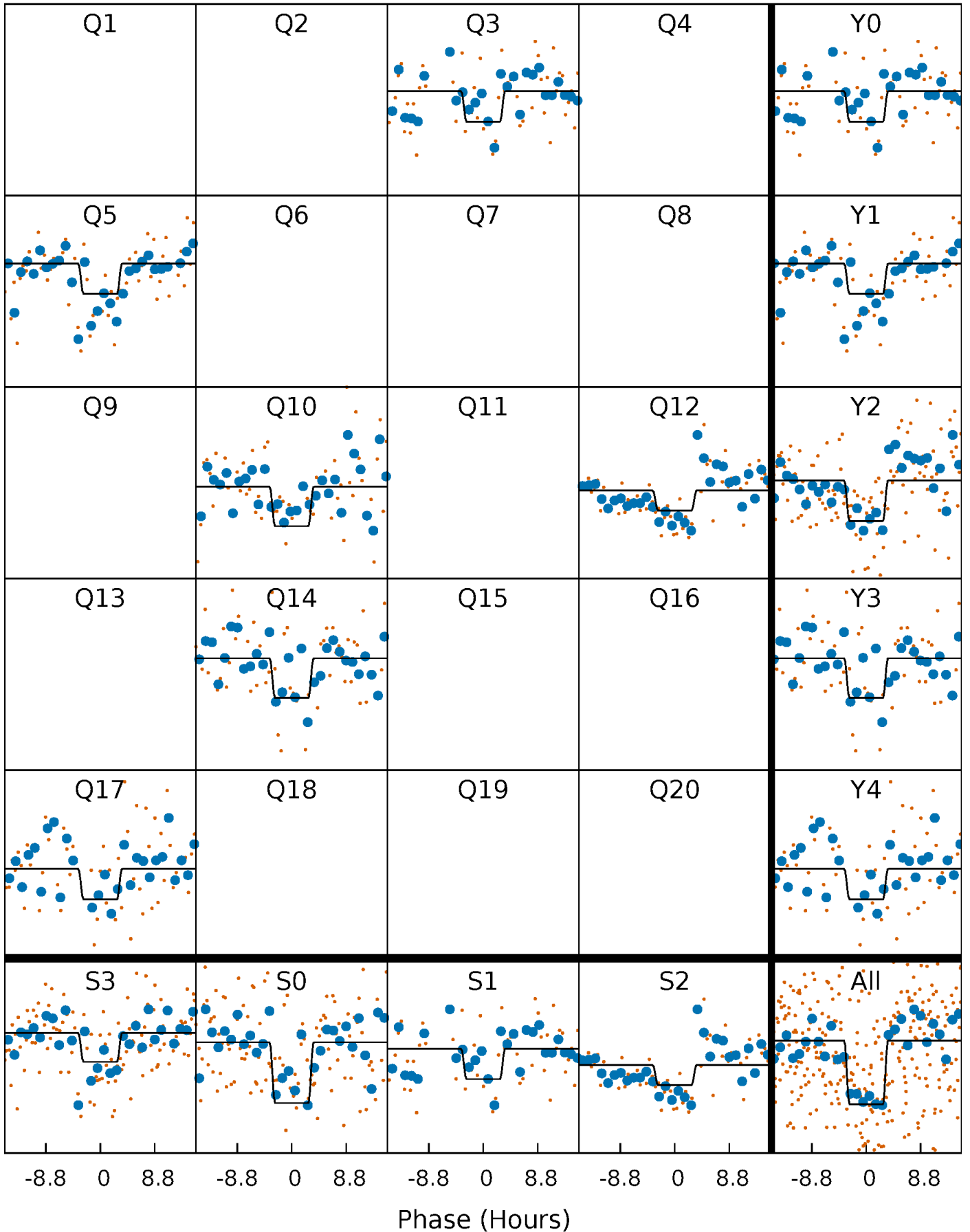
DV Quarter-Phased Transit Curves

TCE 011044826-01 P=215.555175 Days $T_0=267.742898$ (BKJD)



Alt. Detrend Quarter-Phased Transit Curves

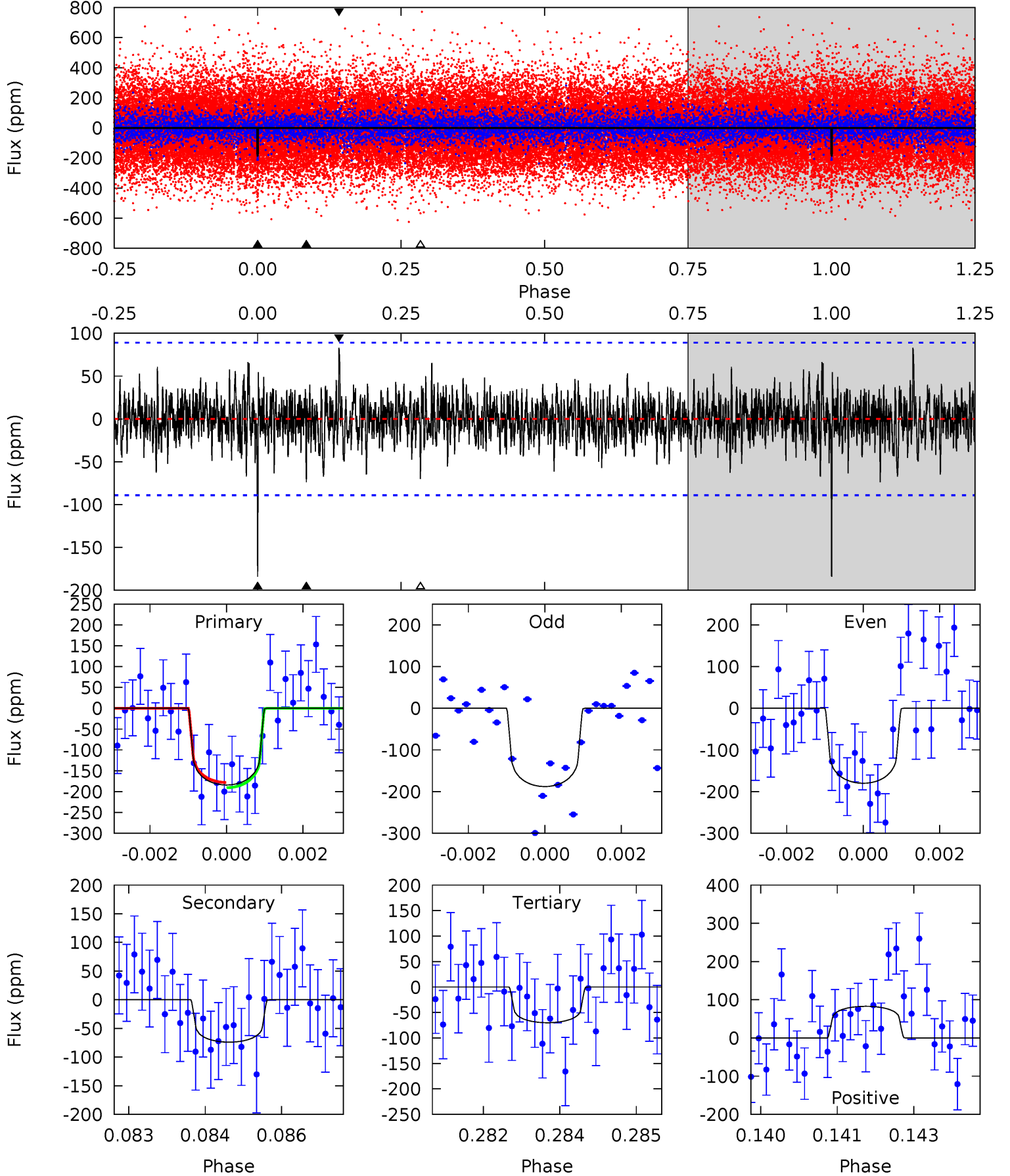
TCE 011044826-01 P=215.540002 Days $T_0=267.783390$ (BKJD)



DV Model-Shift Uniqueness Test

011044826-01, P = 215.555175 Days, E = 52.187723 Days

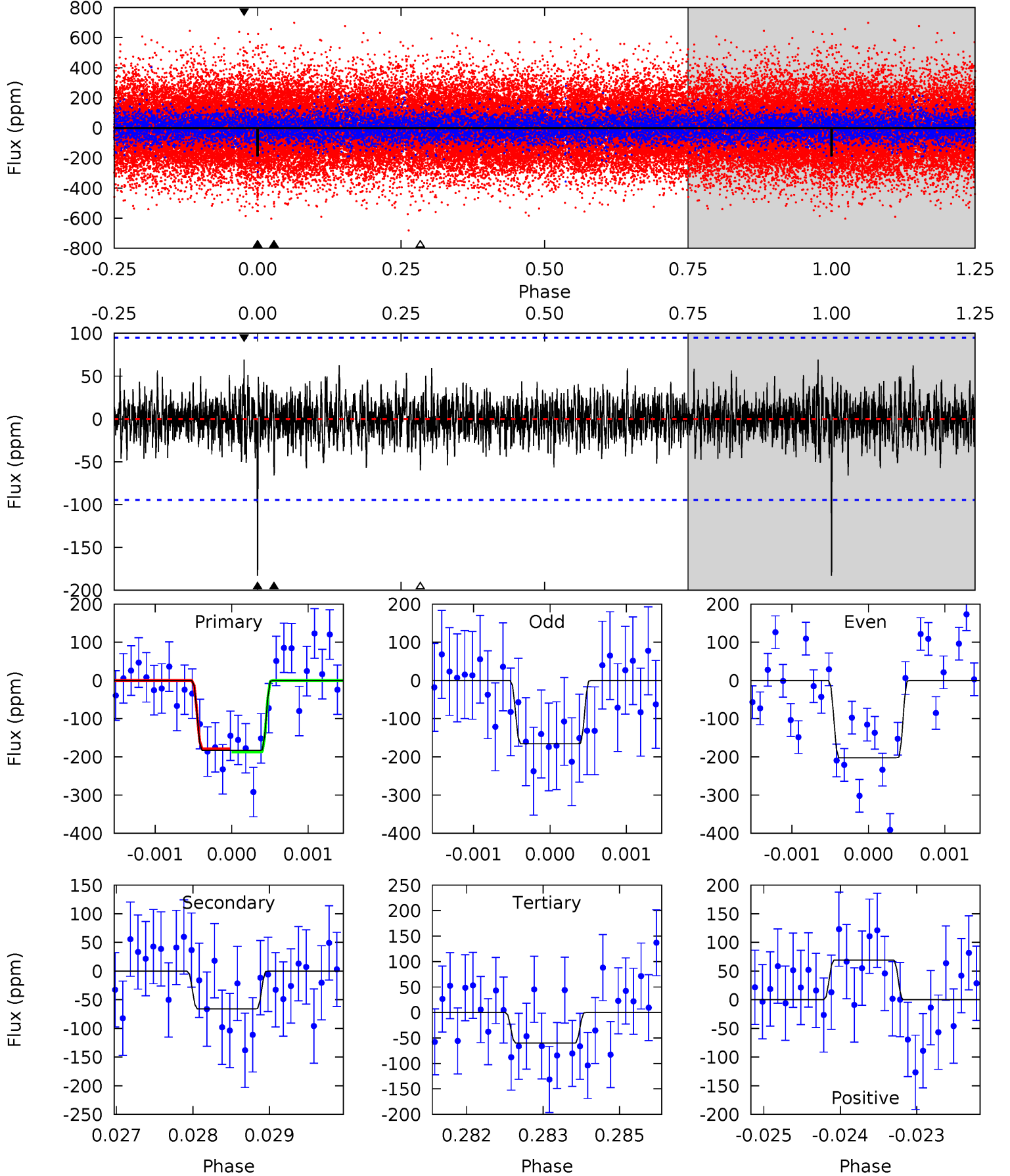
Pri	Sec	Ter	Pos	FA ₁	FA ₂	F _{Red}	Pri-Ter	Pri-Pos	Sec-Ter	Sec-Pos	Odd-Evn	DMM	Shape	TAT
11.1	4.46	4.23	5.00	5.37	3.17	1.18	6.89	6.11	0.24	-0.54	0.24	1.10	0.31	0.37



Alt Model-Shift Uniqueness Test

011044826-01, P = 215.540002 Days, E = 52.243388 Days

Pri	Sec	Ter	Pos	FA ₁	FA ₂	F _{Red}	Pri-Ter	Pri-Pos	Sec-Ter	Sec-Pos	Odd-Evn	DMM	Shape	TAT
10.4	3.75	3.42	3.95	5.40	3.21	0.99	7.01	6.49	0.33	-0.19	1.05	1.20	0.27	0.24



Stellar Parameters For KIC 011044826

	$T_{\text{eff}}(K)$	$\log(g)$	[Fe/H]	R (R_{\odot})	M (M_{\odot})	p_{\star} ($\text{g}\cdot\text{cm}^{-3}$)
	6412^{+142}_{-206}	$4.440^{+0.054}_{-0.216}$	$-0.300^{+0.250}_{-0.300}$	$1.040^{+0.332}_{-0.111}$	$1.084^{+0.142}_{-0.142}$	$1.359^{+0.386}_{-0.713}$
	+2%/-3%	+1%/-5%	+83%/-100%	+32%/-11%	+13%/-13%	+28%/-52%
Source	PHO1	KIC0	KIC0	DSEP		

KIC = Kepler Input Catalog; PHO = Photometry; SPE = Spectroscopy; AST = Asteroseismology
 TRA = Transits; DESP = Dartmouth Models; MULT = Multiple Models

Secondary Eclipse Parameters for KIC 011044826-01 / KOI

Detrend	Depth (ppm)	R_p (R_{\oplus})	T_{max} (K)	T_{obs} (K)	A_{obs}
DV	-74 ± 17	$1.77^{+1.34}_{-1.08}$	485^{+35}_{-24}	4952^{+2972}_{-999}	6552^{+32504}_{-4604}
Alt.	-66 ± 18	$1.90^{+1.37}_{-1.17}$	483^{+36}_{-23}	4683^{+2801}_{-876}	4962^{+29052}_{-3332}

T_{max} = Theoretical Maximum Planetary Temperature

T_{obs} = Observed Planetary Temperature (Assuming $A=0.3$)

A_{obs} = Observed Albedo (Assuming $T=0$)

If a secondary eclipse is present, the system is likely an EB if $T_{obs} \gg T_{max}$ AND $A_{obs} \gg 1.0$

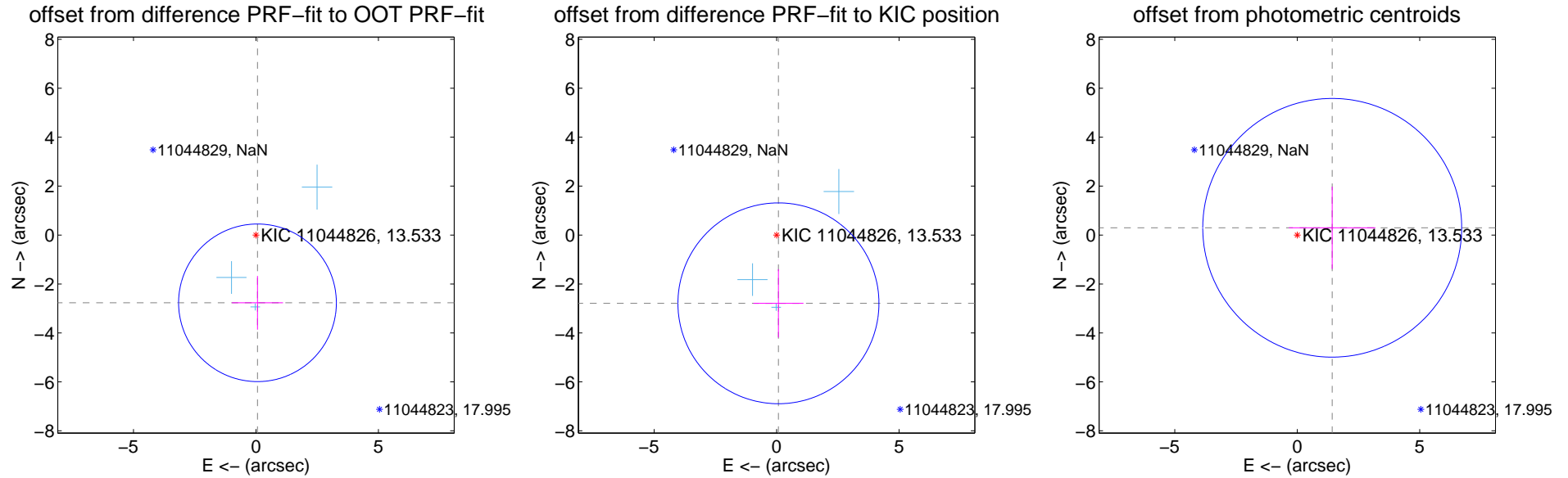
DV Centroid Data

Supplemental centroid analysis for 011044826-01. Kepler magnitude: 13.53. Transit SNR 7.97

There are 3 quarters with good PRF difference image offsets

The direct PRF centroid is offset from the target star catalog position by about 0.09 arcsec

	Distance in arcsec	Distance / σ	Δ RA	Δ Dec
PRF-fit source offset from OOT	2.770 ± 1.074	2.58	-0.062 ± 1.044	-2.769 ± 1.096
PRF-fit source offset from KIC position	2.792 ± 1.368	2.04	-0.075 ± 1.022	-2.791 ± 1.396
photometric centroid source offset	1.46 ± 1.76	0.83	-1.43 ± 1.77	0.30 ± 1.68

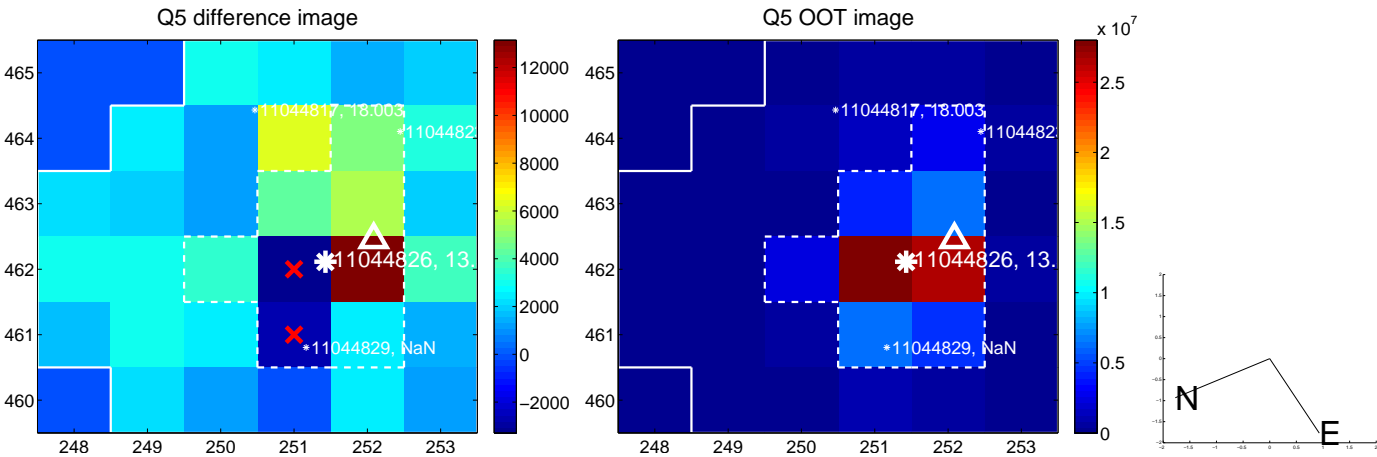


Centroid source offsets from the target star reconstructed from PRF and photometric centroids. Sky blue crosses: good quarterly centroid offsets; Vermillion crosses: bad quarterly centroid offsets; magenta cross: average over quarters. Length of the crosses: one- σ uncertainty. Blue circle: three- σ . Red *: target star. Blue *: Other stars. Text next to a star gives its KIC ID and kepmag. KIC IDs > 15,000,000 are from the UKIRT catalog.

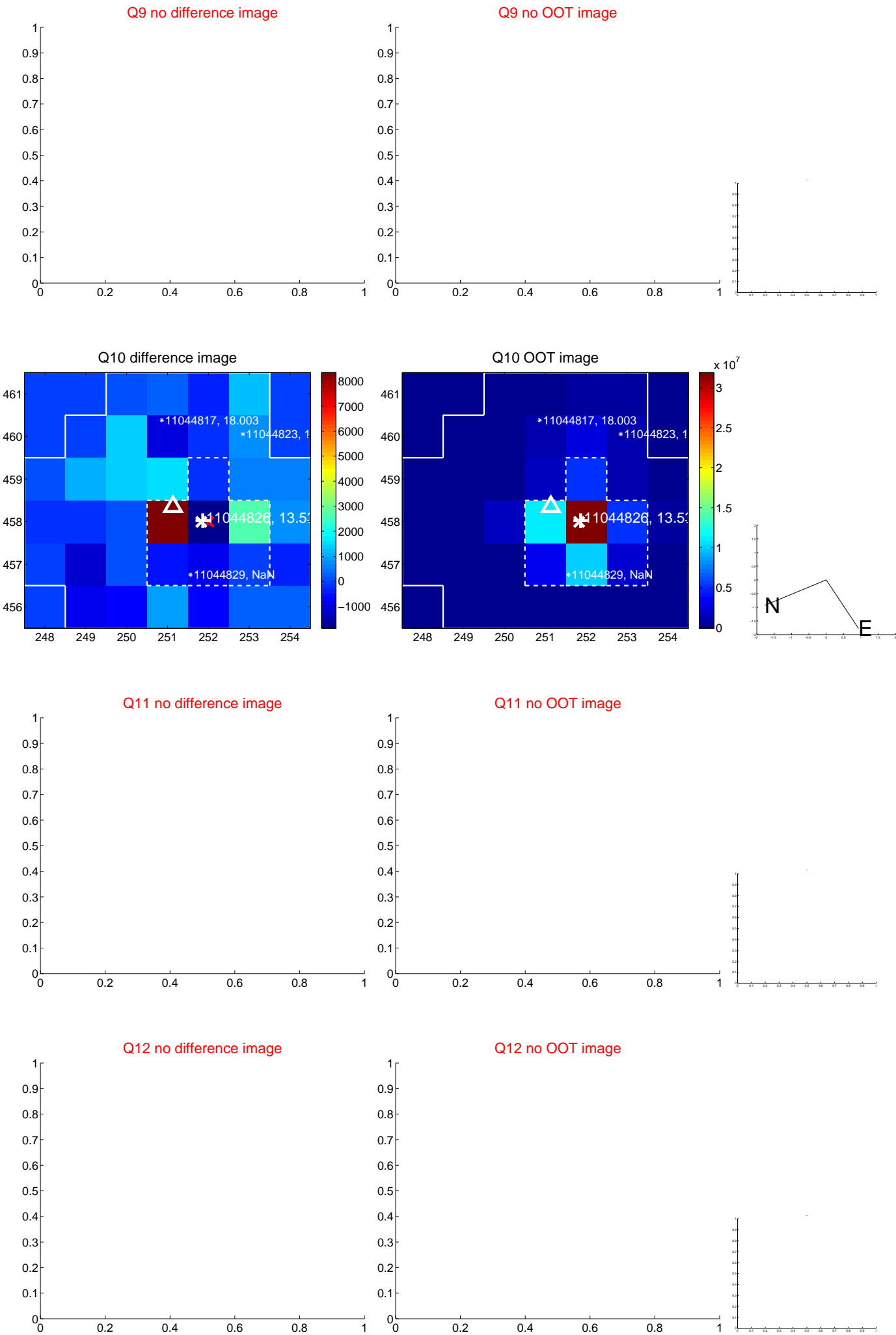
white \times : KIC target position; $+$: OOT centroid; \triangle : difference centroid. red \times : large negative pixel value.



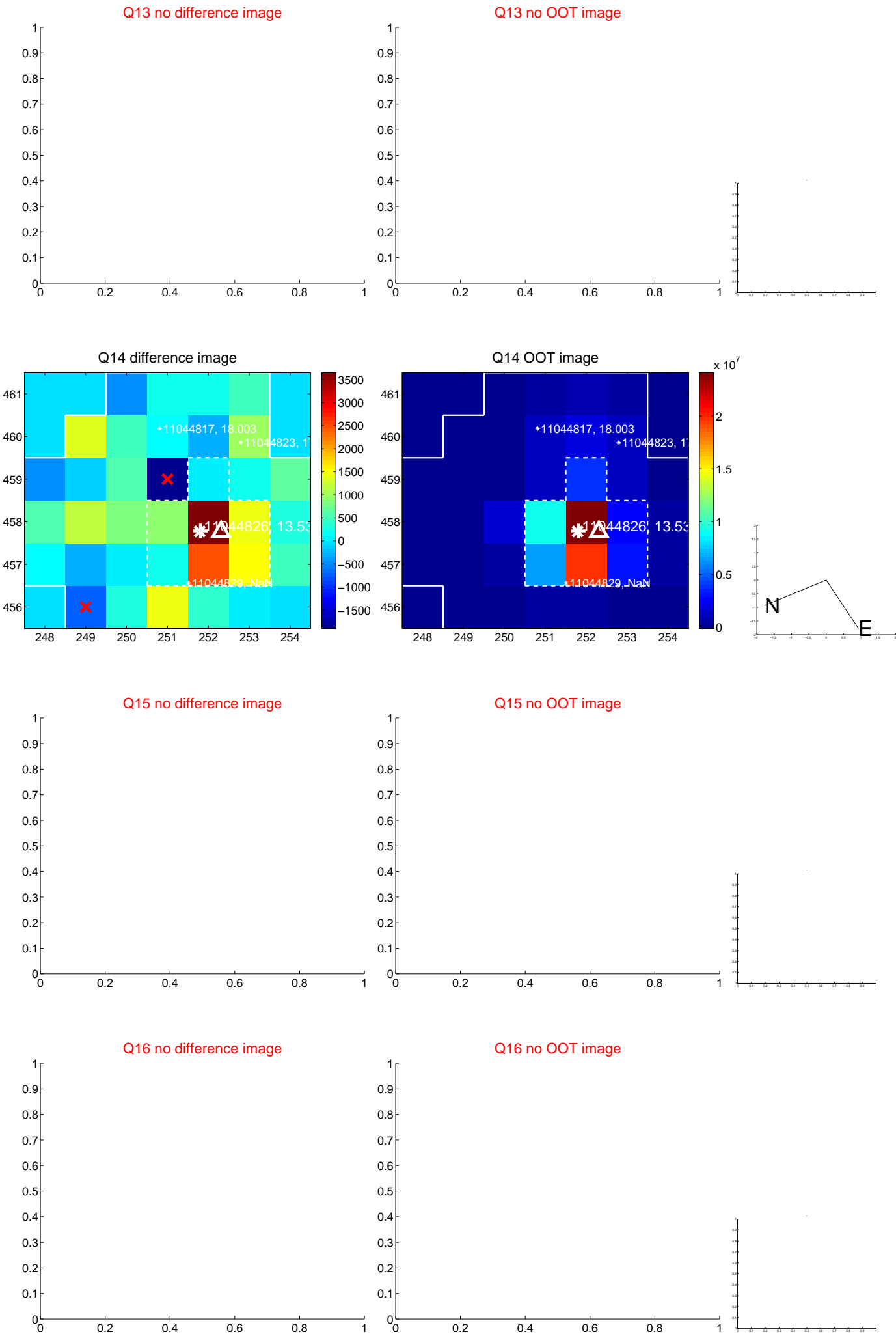
white \times : KIC target position; $+$: OOT centroid; \triangle : difference centroid. red \times : large negative pixel value.



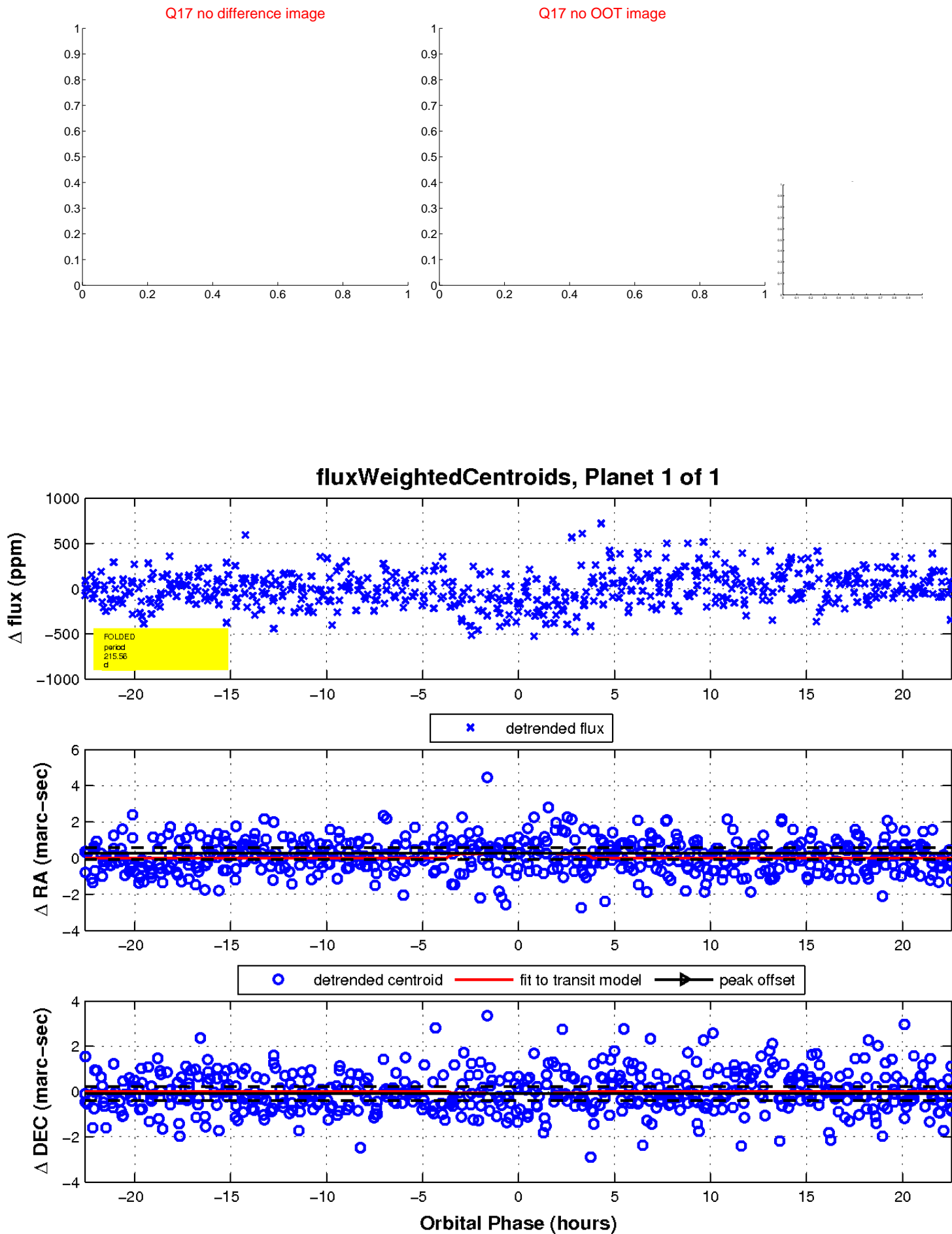
white \times : KIC target position; $+$: OOT centroid; \triangle : difference centroid. red \times : large negative pixel value.



white \times : KIC target position; $+$: OOT centroid; \triangle : difference centroid. red \times : large negative pixel value.



white \times : KIC target position; $+$: OOT centroid; \triangle : difference centroid. red \times : large negative pixel value.



UKIRT Image

Declination

