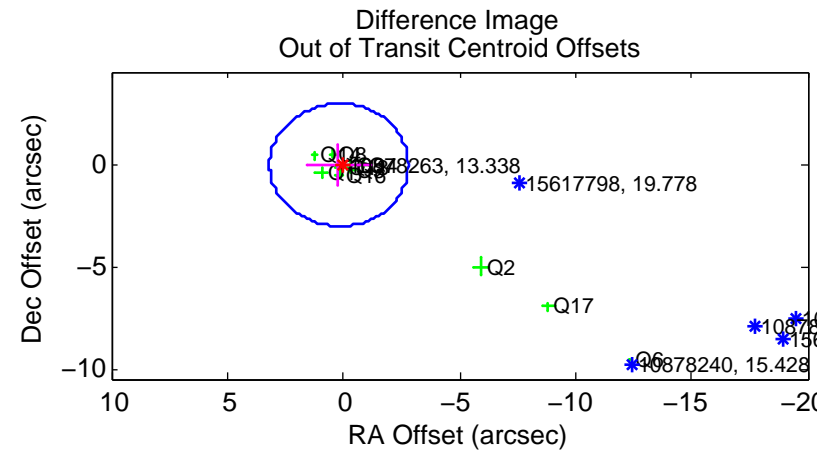
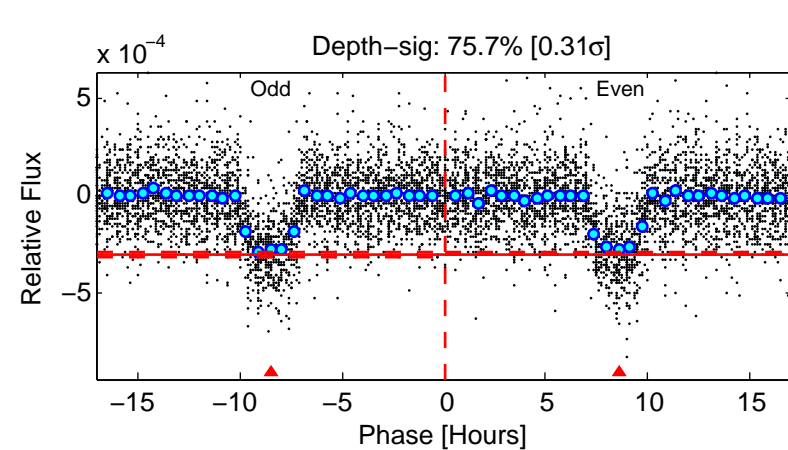
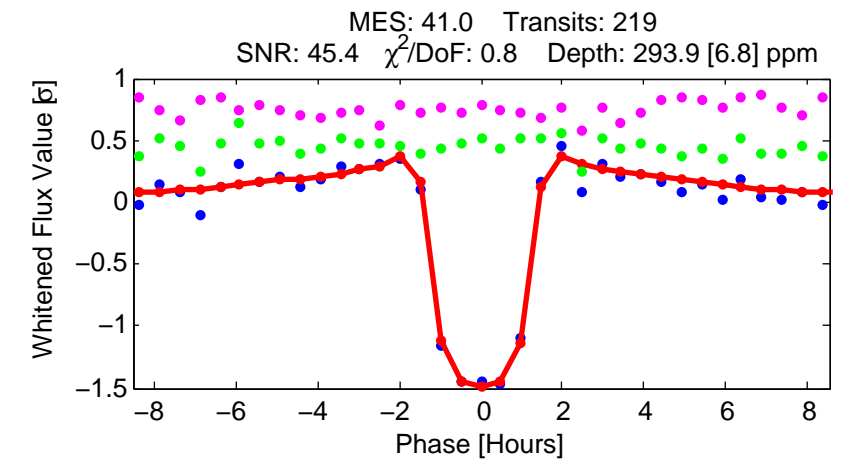
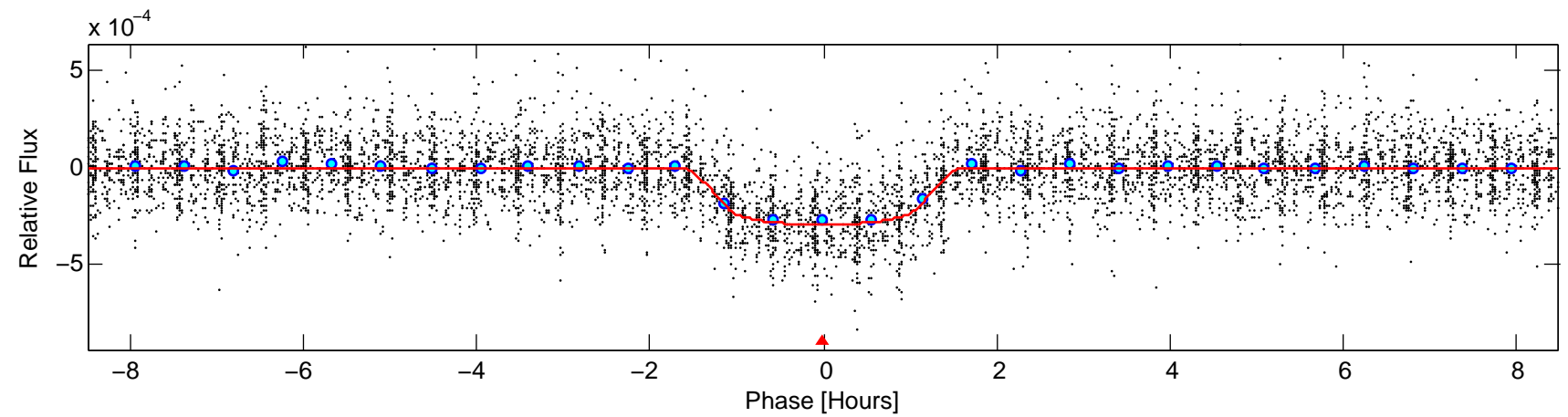
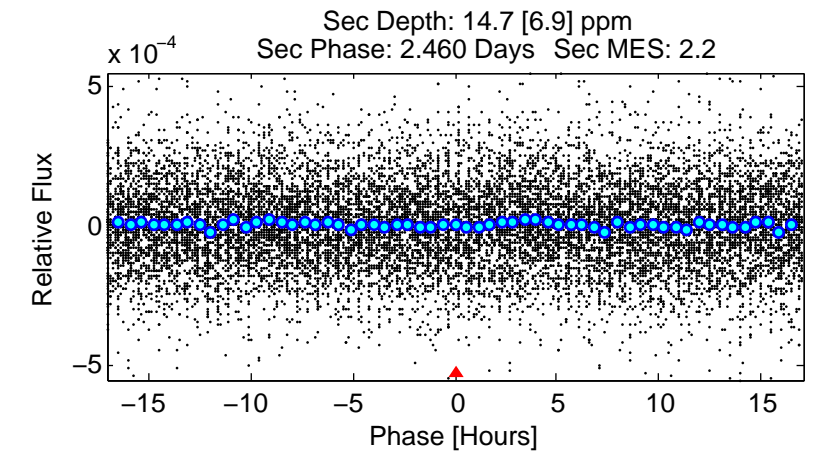
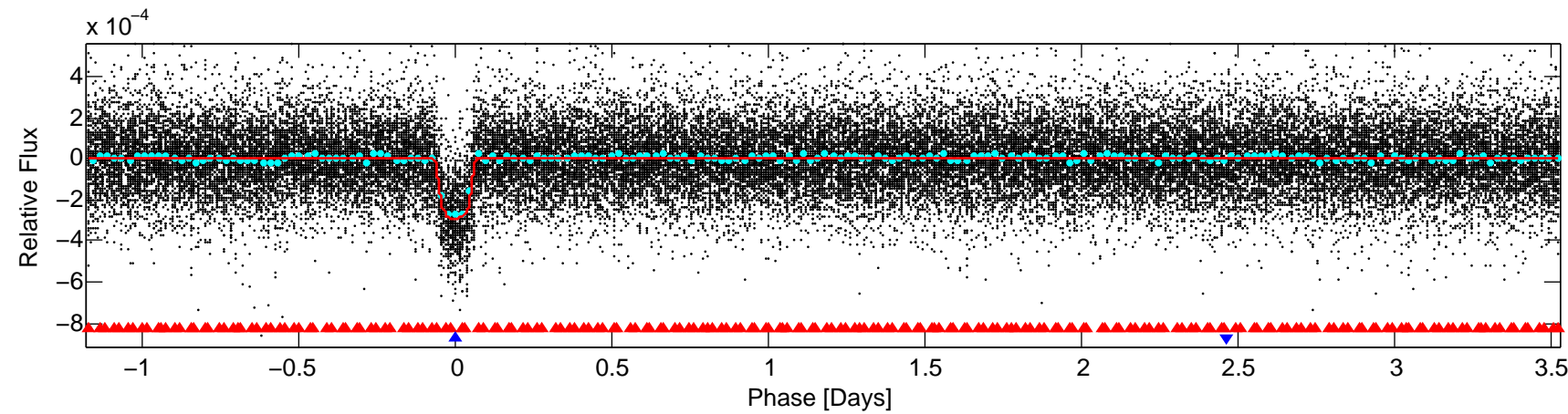
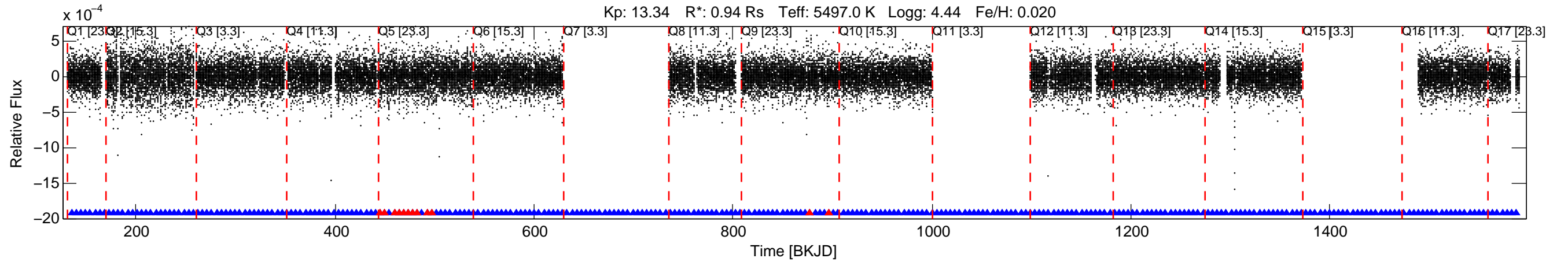


KIC: 10878263 Candidate: 2 of 2 Period: 4.700 d  
 KOI: K00341.02 Name: Kepler-414b Corr: 0.920



#### DV Fit Results:

Period = 4.69965 [0.00001] d  
 Epoch = 135.3194 [0.0009] BKJD  
 Rp/R\* = 0.0186 [0.0019]  
 a/R\* = 6.41 [2.82]  
 b = 0.89 [0.11]  
 Seff = 260.84 [46.26]  
 Teq = 1025 [45] K  
 Rp = 1.91 [0.30] Re  
 a = 0.0527 [0.0055] AU  
 Ag = 6.15 [3.29] [1.56σ]  
 Teffp = 2495 [323] K [4.51σ]

#### DV Diagnostic Results:

ShortPeriod-sig: N/A  
 LongPeriod-sig: 100.0% [14.29σ]  
 ModelChiSquare2-sig: N/A  
 ModelChiSquareGof-sig: N/A  
 Bootstrap-pfa: 0.00e+00  
 RollingBand-fgt: 0.94 [194/206]  
 GhostDiagnostic-chr: 12.44  
 Centroid-sig: 0.7%  
 Centroid-so: 0.474 arcsec [1.81σ]  
 OotOffset-rm: 0.195 arcsec [0.20σ]  
 KicOffset-rm: 0.288 arcsec [0.34σ]  
 OotOffset-st: 3/1/3/4 [11]  
 KicOffset-st: 3/1/3/4 [11]  
 DiffImageQuality-fgm: 0.73 [8/11]  
 DiffImageOverlap-fno: 1.00 [14/14]