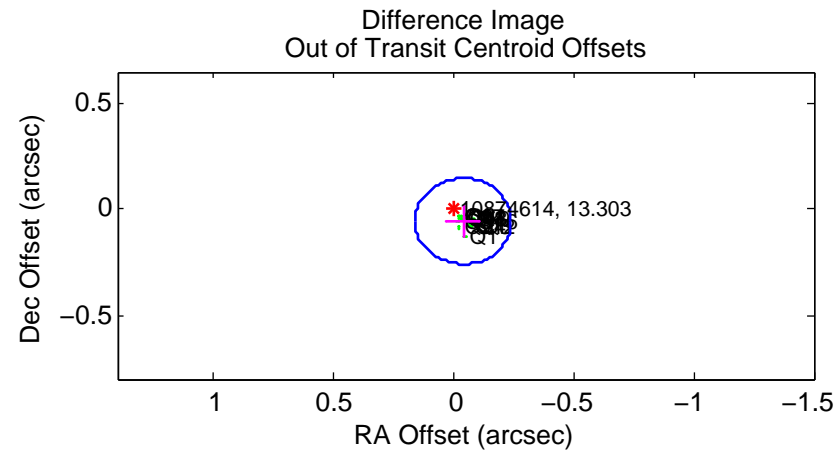
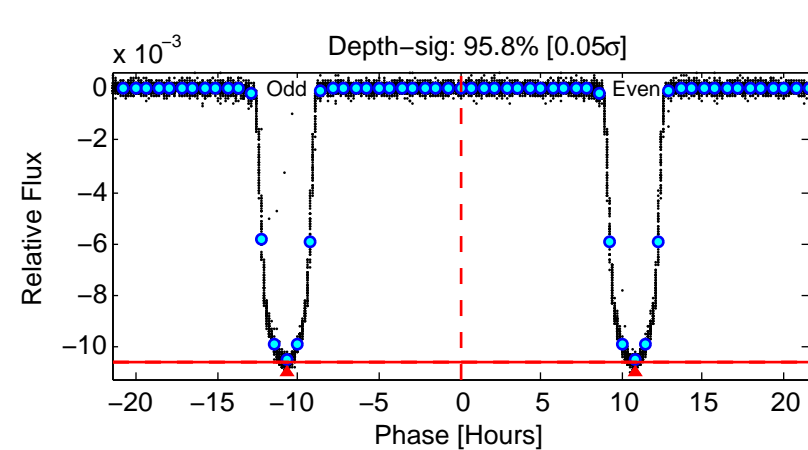
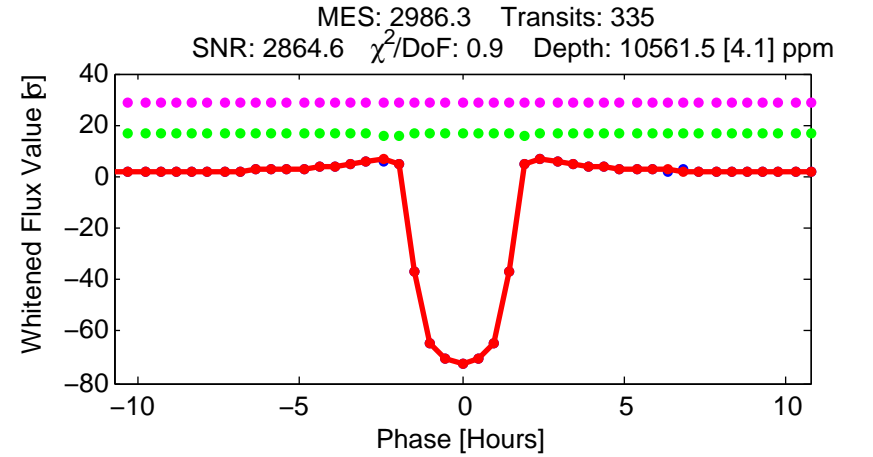
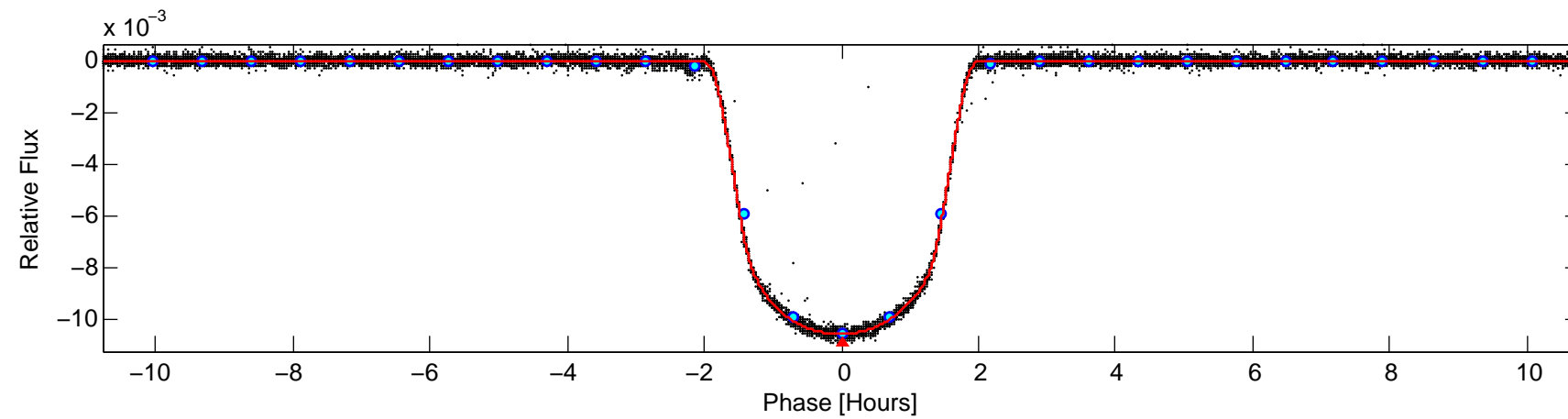
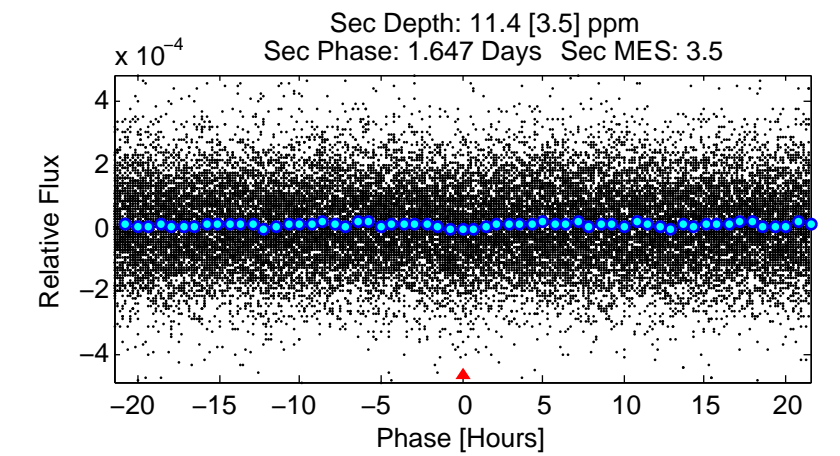
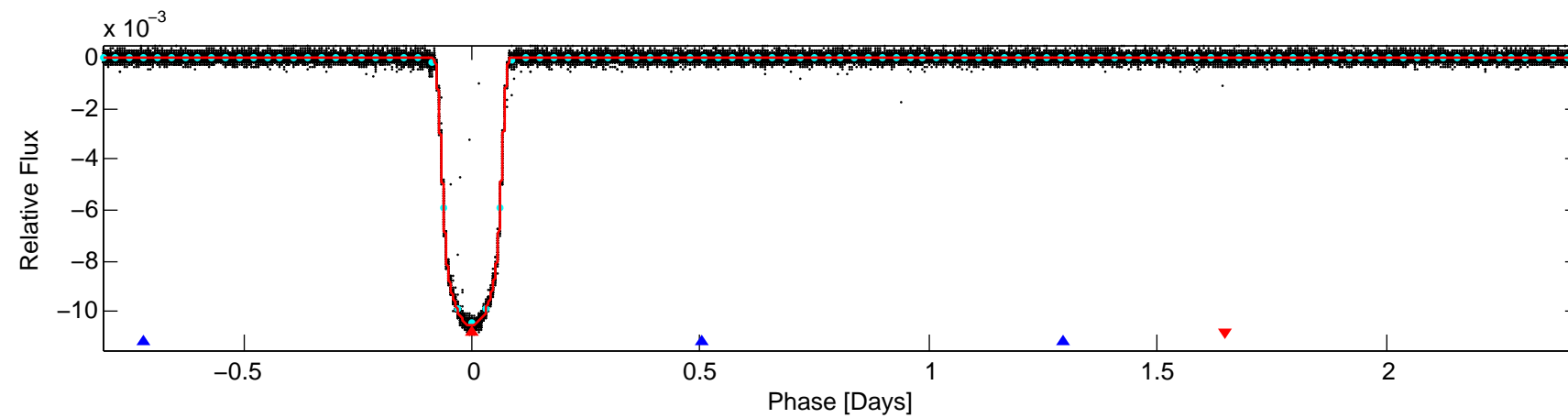
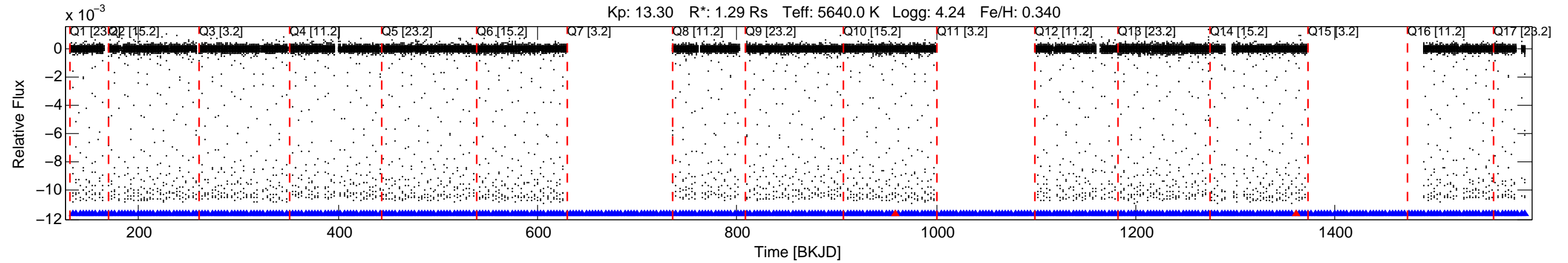


KIC: 10874614 Candidate: 1 of 2 Period: 3.235 d  
 KOI: K00017.01 Name: Kepler-6b Corr: 0.999



#### DV Fit Results:

Period = 3.23470 [0.00000] d  
 Epoch = 134.4253 [0.0000] BKJD  
 Rp/R\* = 0.0925 [0.0002]  
 a/R\* = 7.54 [0.06]  
 b = 0.02 [0.38]  
 Seff = 799.56 [101.00]  
 Teq = 1356 [43] K  
 Rp = 13.04 [0.96] Re  
 a = 0.0435 [0.0028] AU  
 Ag = 0.07 [0.02] [-40.98 $\sigma$ ]  
 Teffp = 1077 [86] K [-2.89 $\sigma$ ]

#### DV Diagnostic Results:

ShortPeriod-sig: N/A  
 LongPeriod-sig: 100.0% [1509.32 $\sigma$ ]  
 ModelChiSquare2-sig: N/A  
 ModelChiSquareGof-sig: N/A  
 Bootstrap-pfa: 0.00e+00  
 RollingBand-fgt: 0.99 [314/316]  
 GhostDiagnostic-chr: 5.983  
 Centroid-sig: 0.0%  
 Centroid-so: 0.155 arcsec [36.94 $\sigma$ ]  
 OotOffset-rm: 0.069 arcsec [1.03 $\sigma$ ]  
 KicOffset-rm: 0.189 arcsec [2.72 $\sigma$ ]  
 OotOffset-st: 4/1/4/5 [14]  
 KicOffset-st: 4/1/4/5 [14]  
 DiffImageQuality-fgm: 1.00 [14/14]  
 DiffImageOverlap-fno: 1.00 [14/14]