

KIC 010730250

Q1-17 DR25 TCE Parameters

TCE	Run Type	KOI?	Period (Days)	Epoch (BKJD)	Depth (ppm)	Duration (Hours)	MES	SNR	R_{\star} (R_{\odot})	T_{\star} (K)	R_p (R_{\oplus})	S_p (S_{\oplus})
010730250-01	OBS	8030.01	13.667709	134.669036	150.0	2.917	7.6	7.8	0.81	5796	1.17	58.40

Robovetter Results

TCE	Run Type	Disp	Score	N	S	C	E	Comments
010730250-01	OBS	FP	0.00	0	0	1	0	CENT_RESOLVED_OFFSET—HALO_GHOST

Notes: OBS = Observed. INJ = Injected. INV = Inverted. SCR = Scrambled.

N = Not Transit-Like. S = Stellar Eclipse. C = Centroid Offset. E = Ephemeris Match.

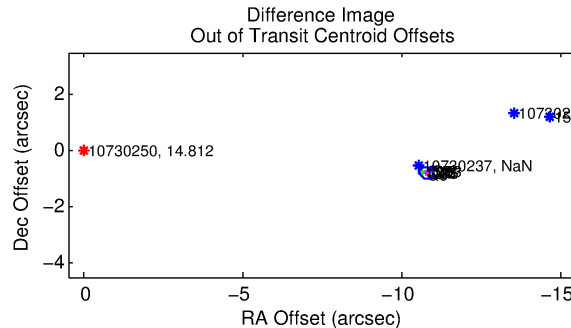
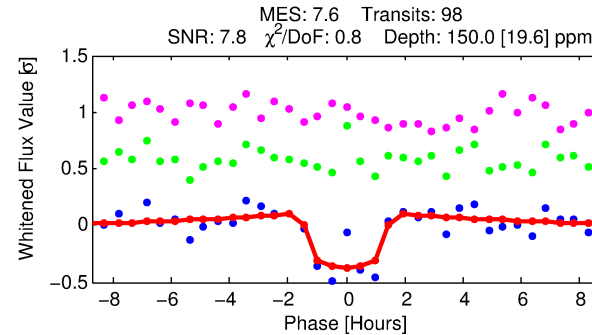
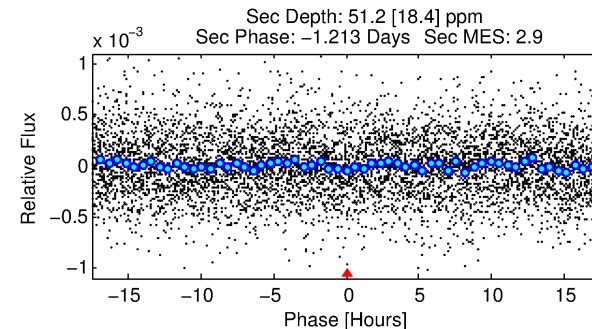
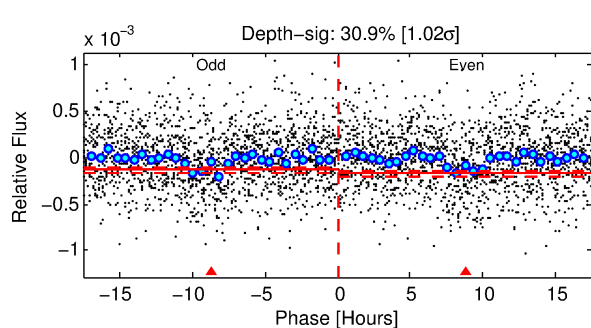
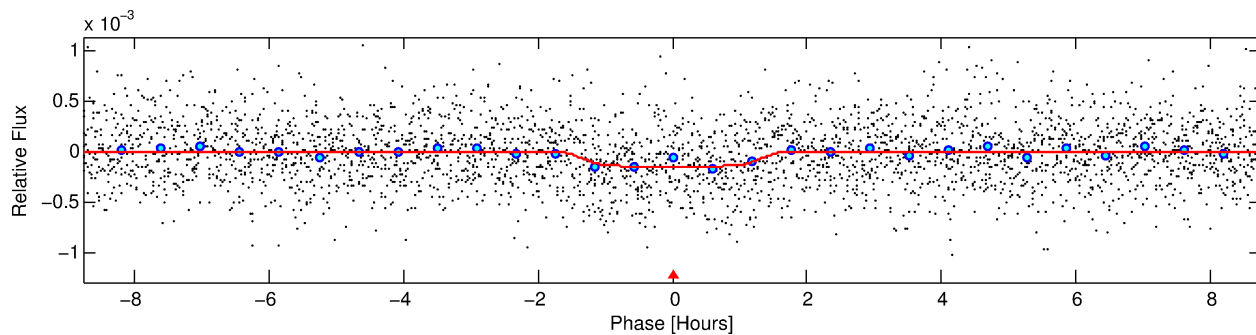
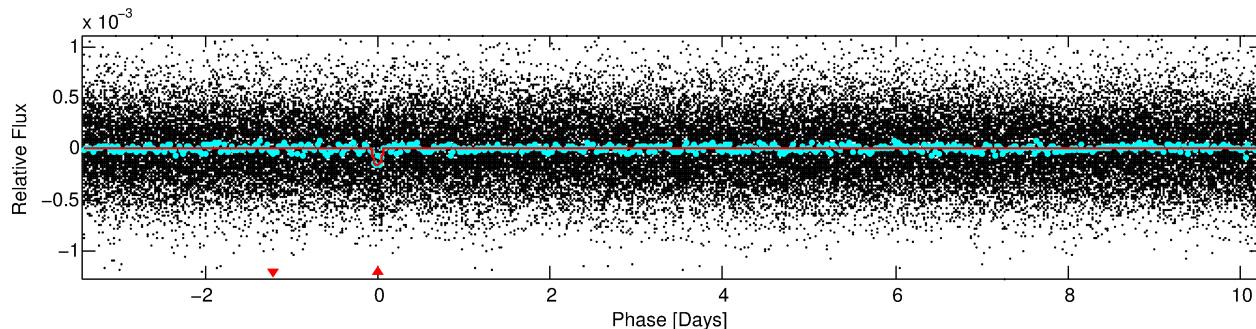
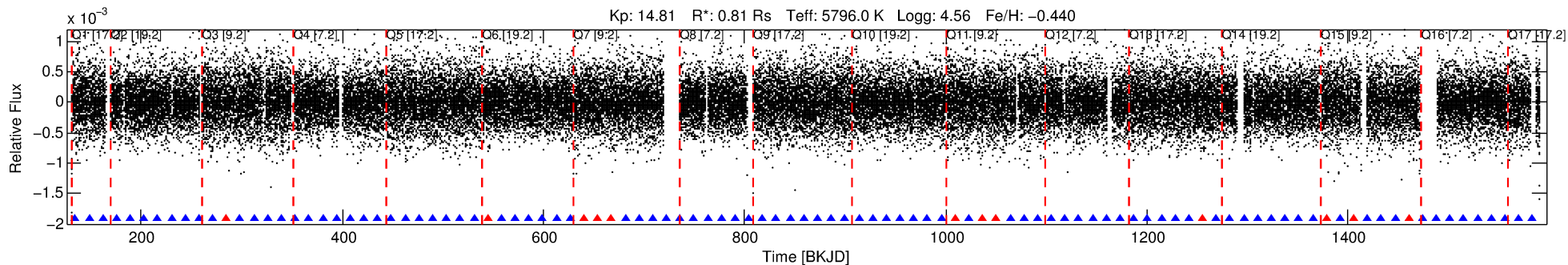
See http://exoplanetarchive.ipac.caltech.edu/docs/API_kepcandidate_columns.html#proj_disp_col for comment definitions.

Ephemeris Match Information For 010730250-01

No Significant Match Found

DV One-Page Summary

KIC: 10730250 Candidate: 1 of 1 Period: 13.668 d



DV Fit Results:

Period = 13.66771 [0.00012] d
Epoch = 134.6690 [0.0069] BKJD
Rp/R* = 0.0133 [0.0085]
a/R* = 16.69 [54.14]
b = 0.90 [0.70]
Seff = 58.40 [19.57]
Teq = 705 [59] K
Rp = 1.17 [0.81] Re
a = 0.1062 [0.0228] AU
Ag = 232.84 [319.93] [0.72σ]
Teff = 4257 [1427] K [2.49σ]

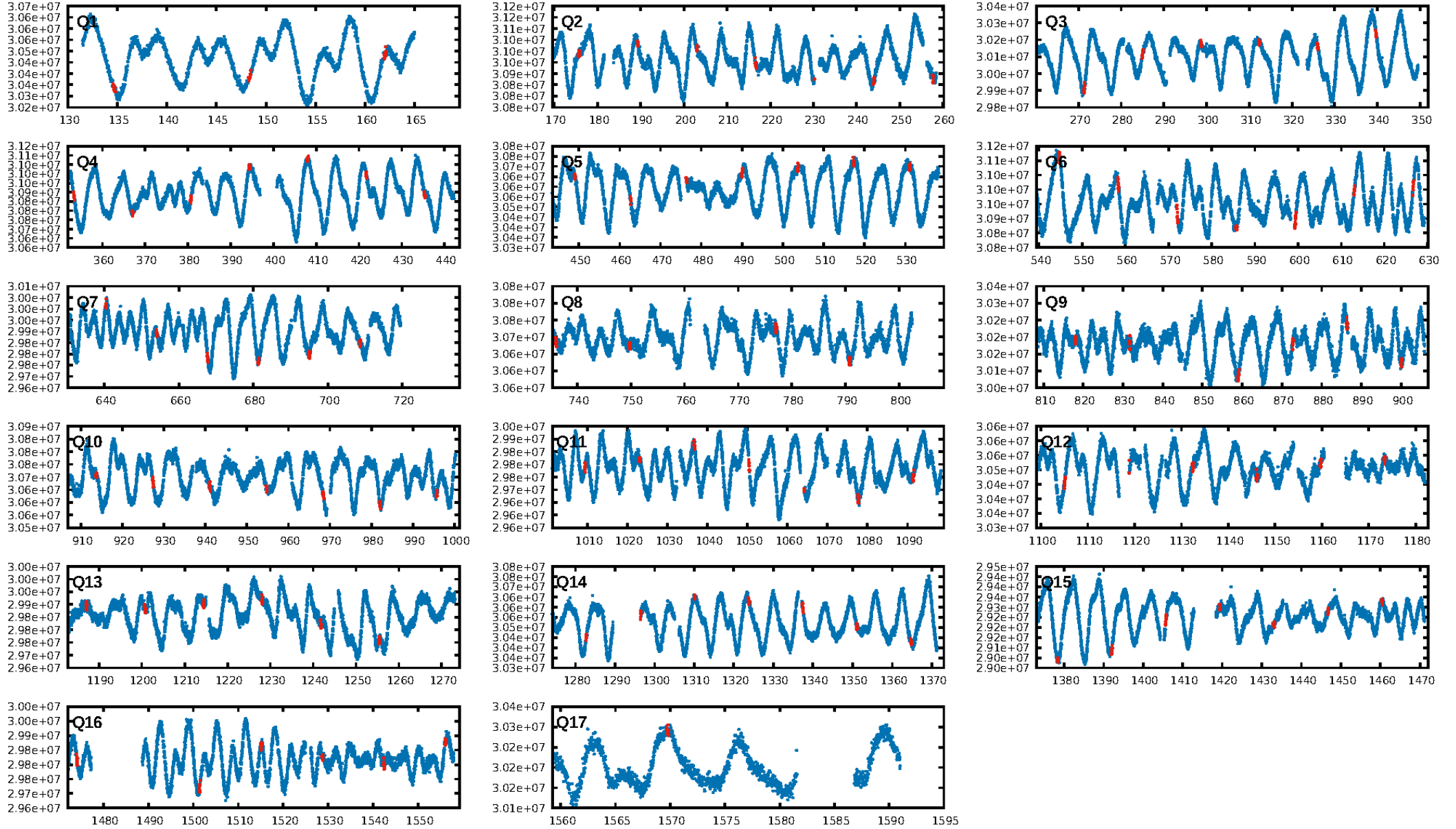
DV Diagnostic Results:

ShortPeriod-sig: N/A
LongPeriod-sig: N/A
ModelChiSquare2-sig: 95.6%
ModelChiSquareGof-sig: 100.0%
Bootstrap-pfa: 2.17e-14
RollingBand-fgt: 0.87 [82/94]
GhostDiagnostic-chr: -0.2454
Centroid-sig: 0.0%
Centroid-so: 112.697 arcsec [66.28σ]
OotOffset-rm: 10.800 arcsec [151.53σ]
KicOffset-rm: 10.674 arcsec [155.53σ]
OotOffset-st: 0/4/3/5 [12]
KicOffset-st: 0/4/3/5 [12]
DiffImageQuality-fgm: 1.00 [12/12]
DiffImageOverlap-fno: 1.00 [17/17]

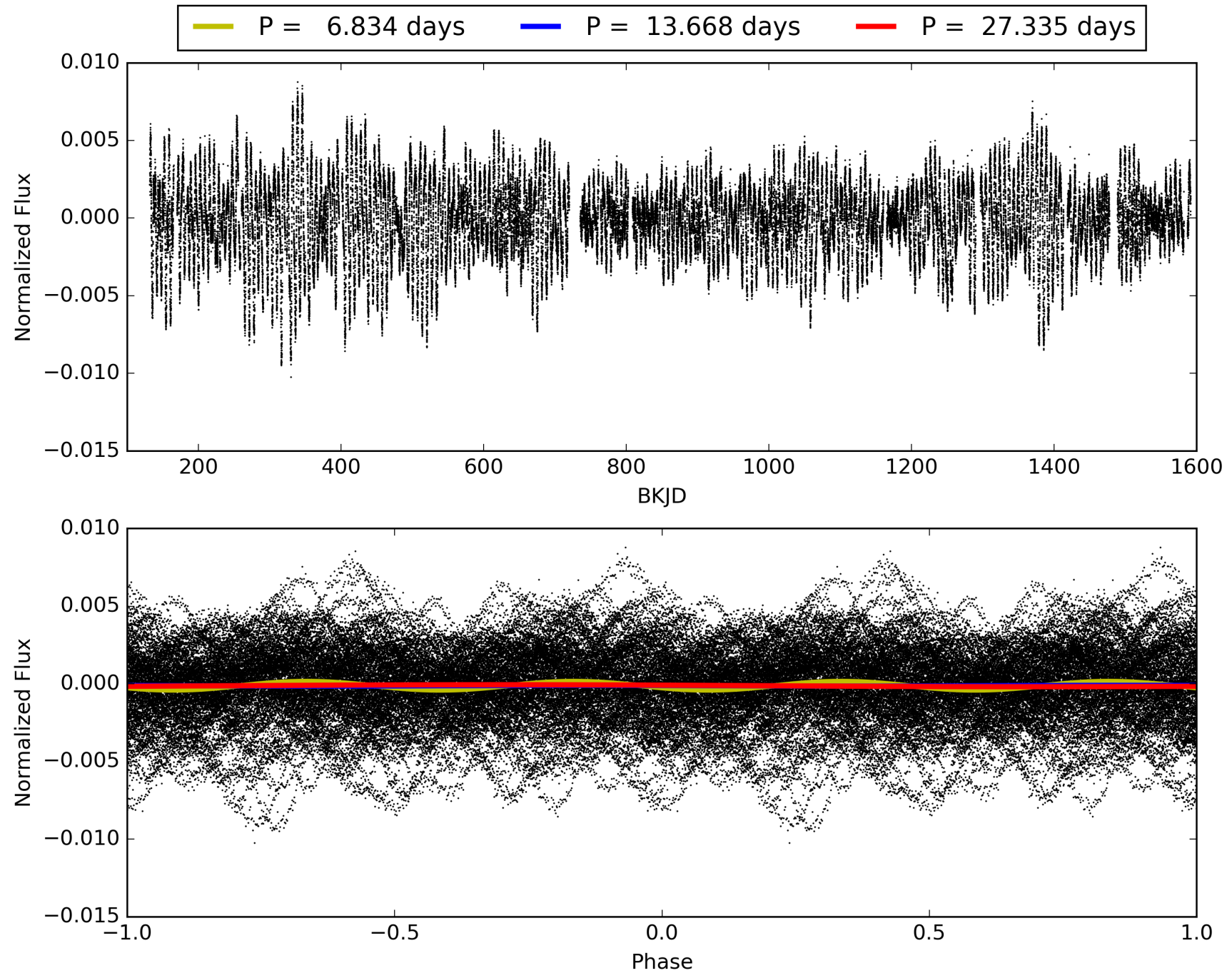
Software Revision: svn+ssh://murzim/repo/soc/tags/release/9.3.42@60958 -- Date Generated: 28-Jan-2016 20:24:33 Z

This Data Validation Report Summary was produced in the Kepler Science Operations Center Pipeline at NASA Ames Research Center

TCE 010730250-01, PDC Light Curves

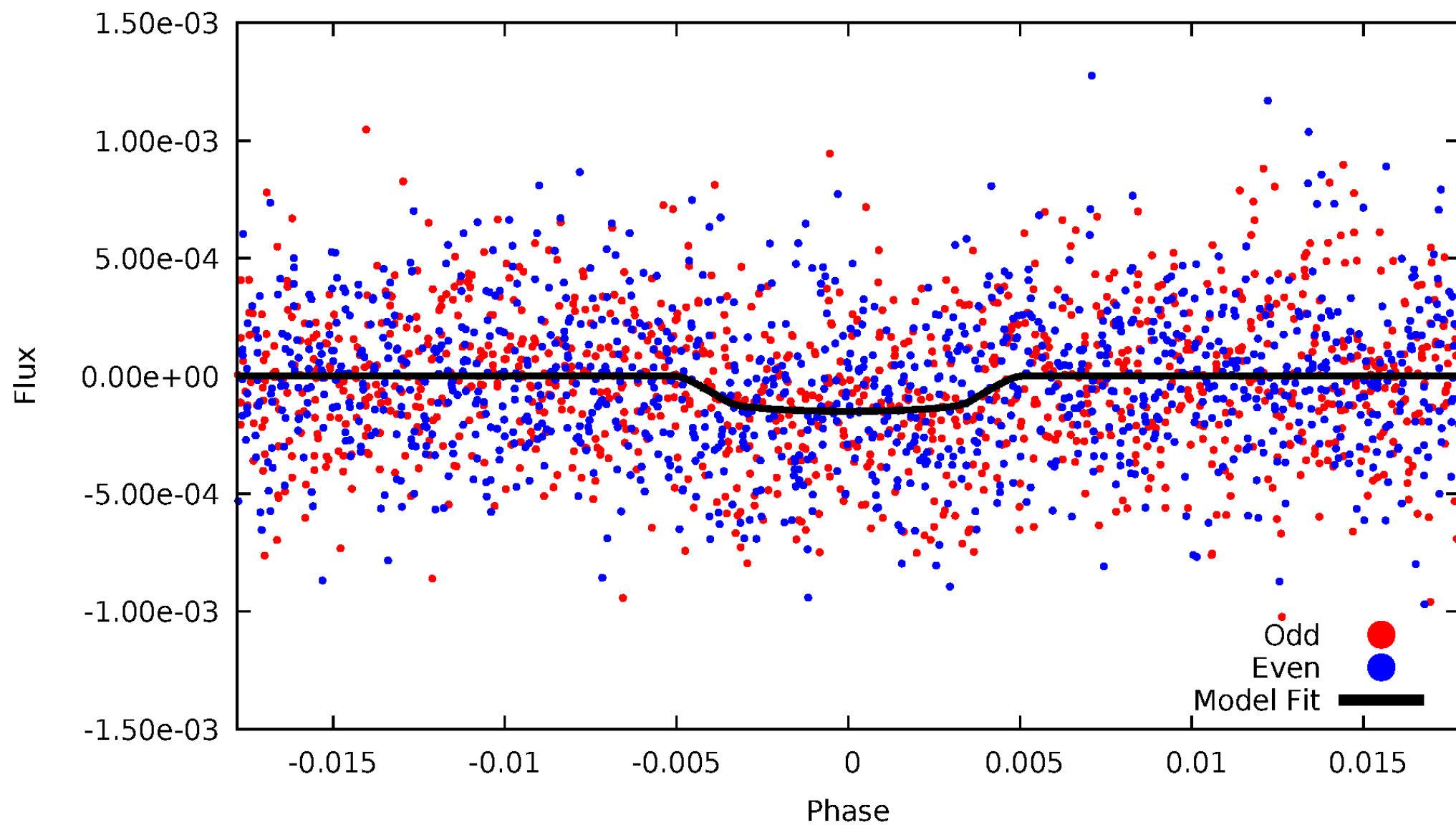


TCE 010730250-01



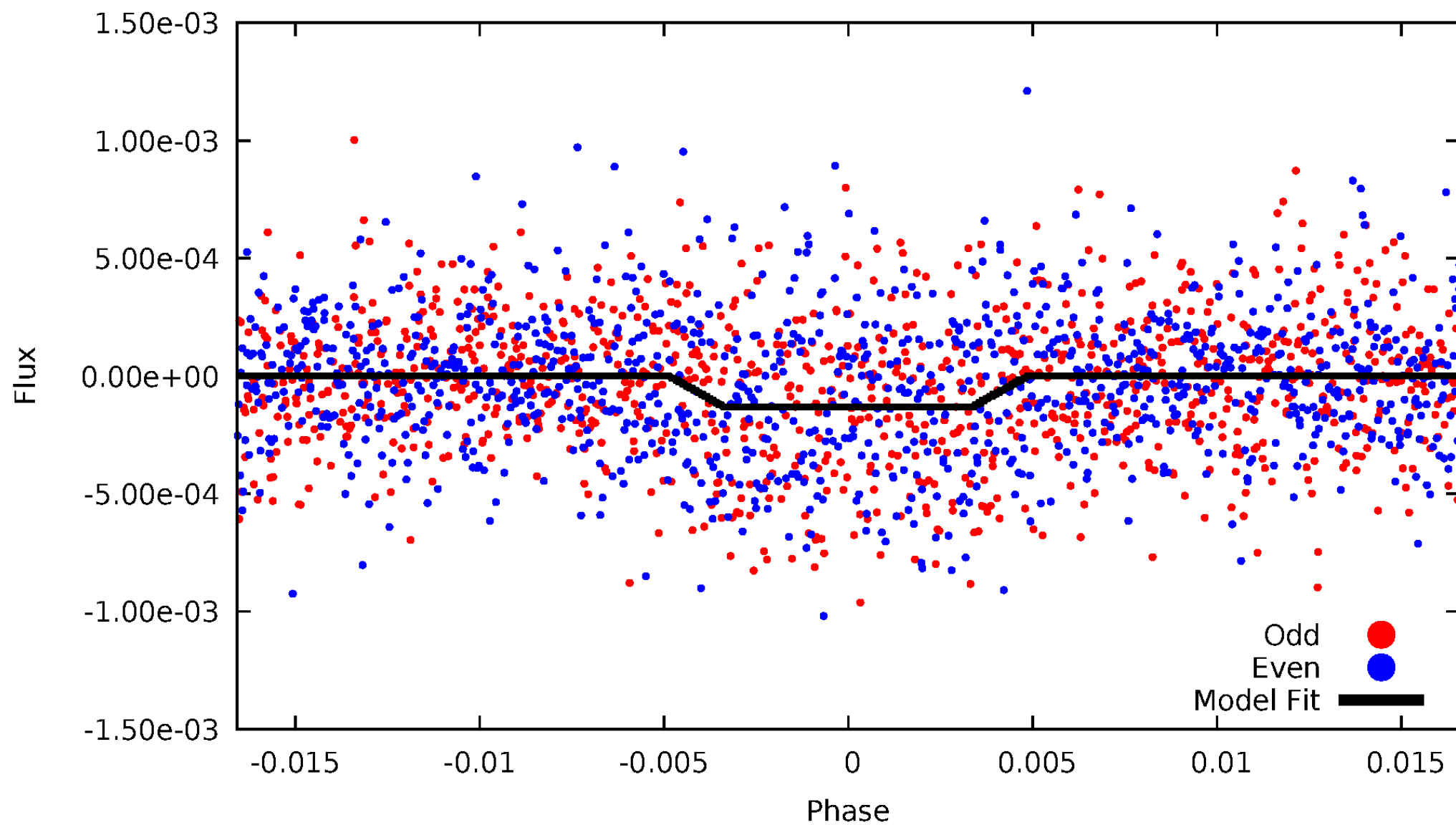
DV Odd/Even

TCE 010730250-01



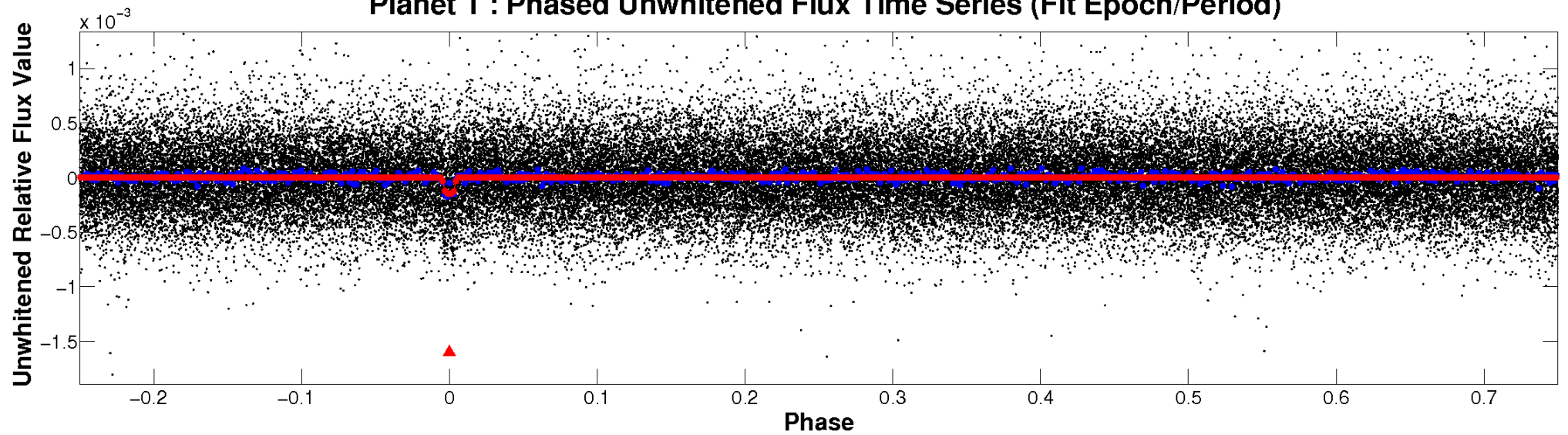
ALT Odd/Even

TCE 010730250-01

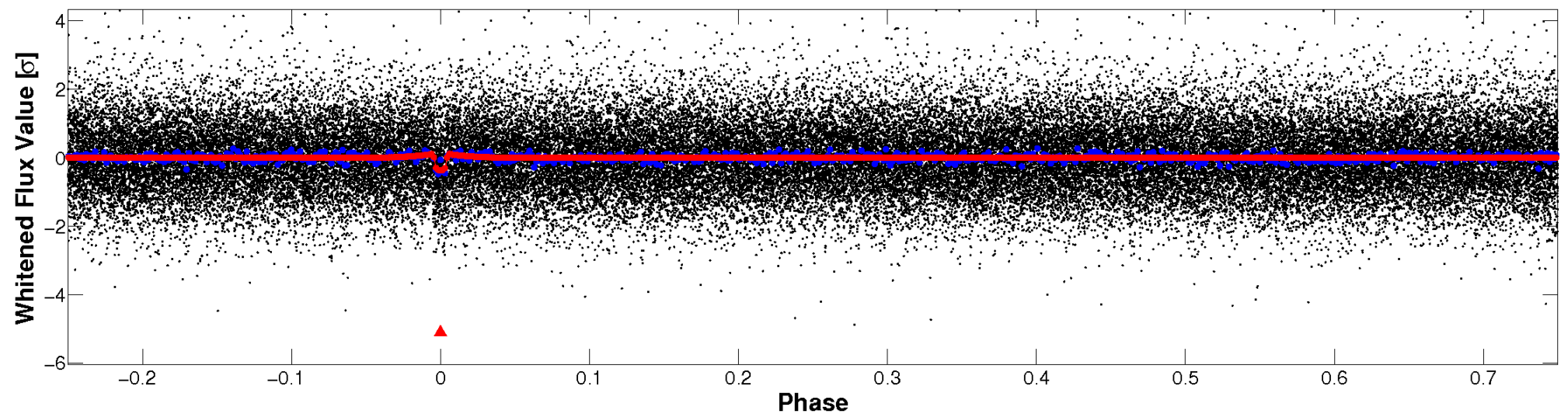


Non-Whitened Vs. Whitened Light Curve

Planet 1 : Phased Unwhitened Flux Time Series (Fit Epoch/Period)

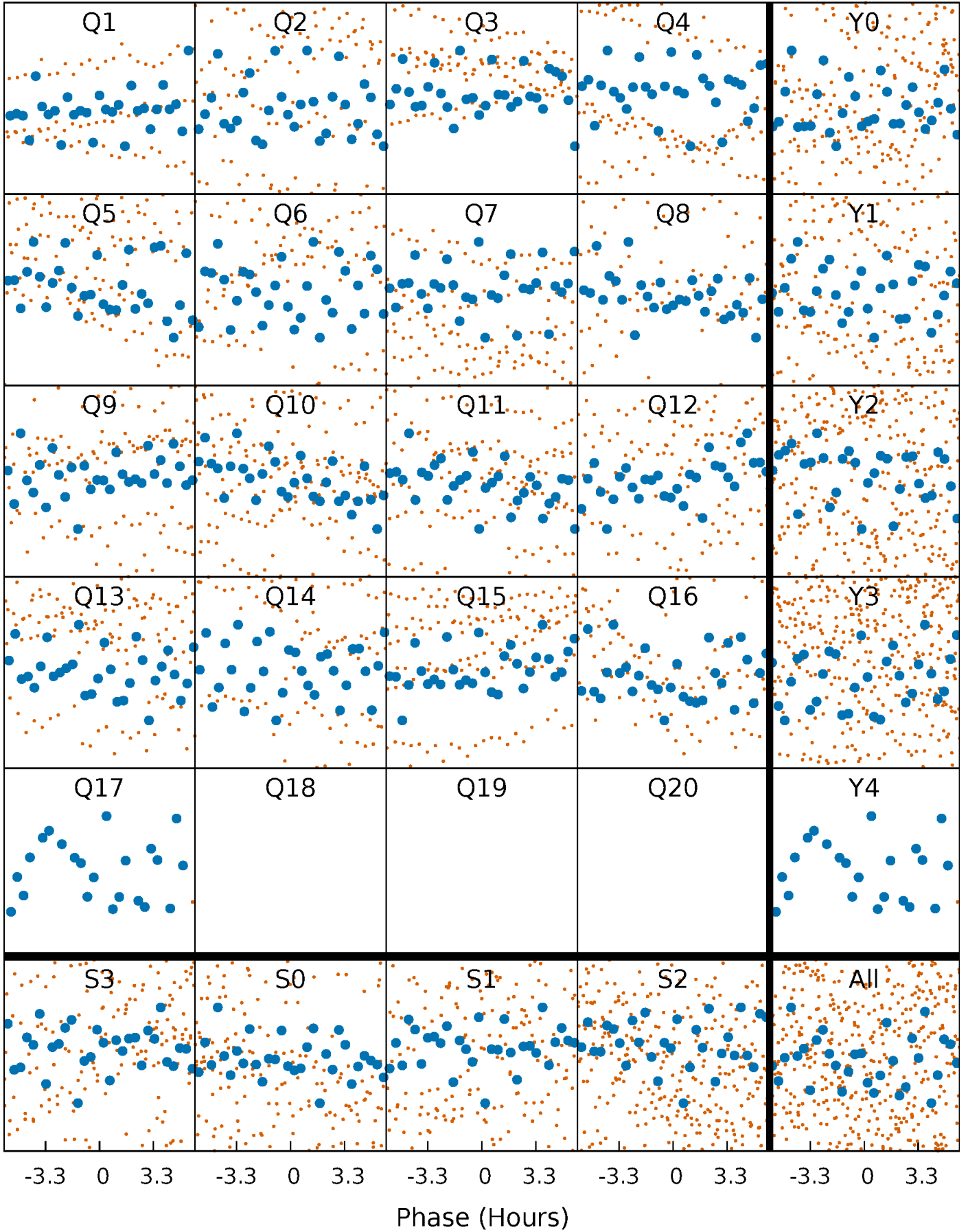


Planet 1 : Phased Whitened Flux Time Series (Fit Epoch/Period)



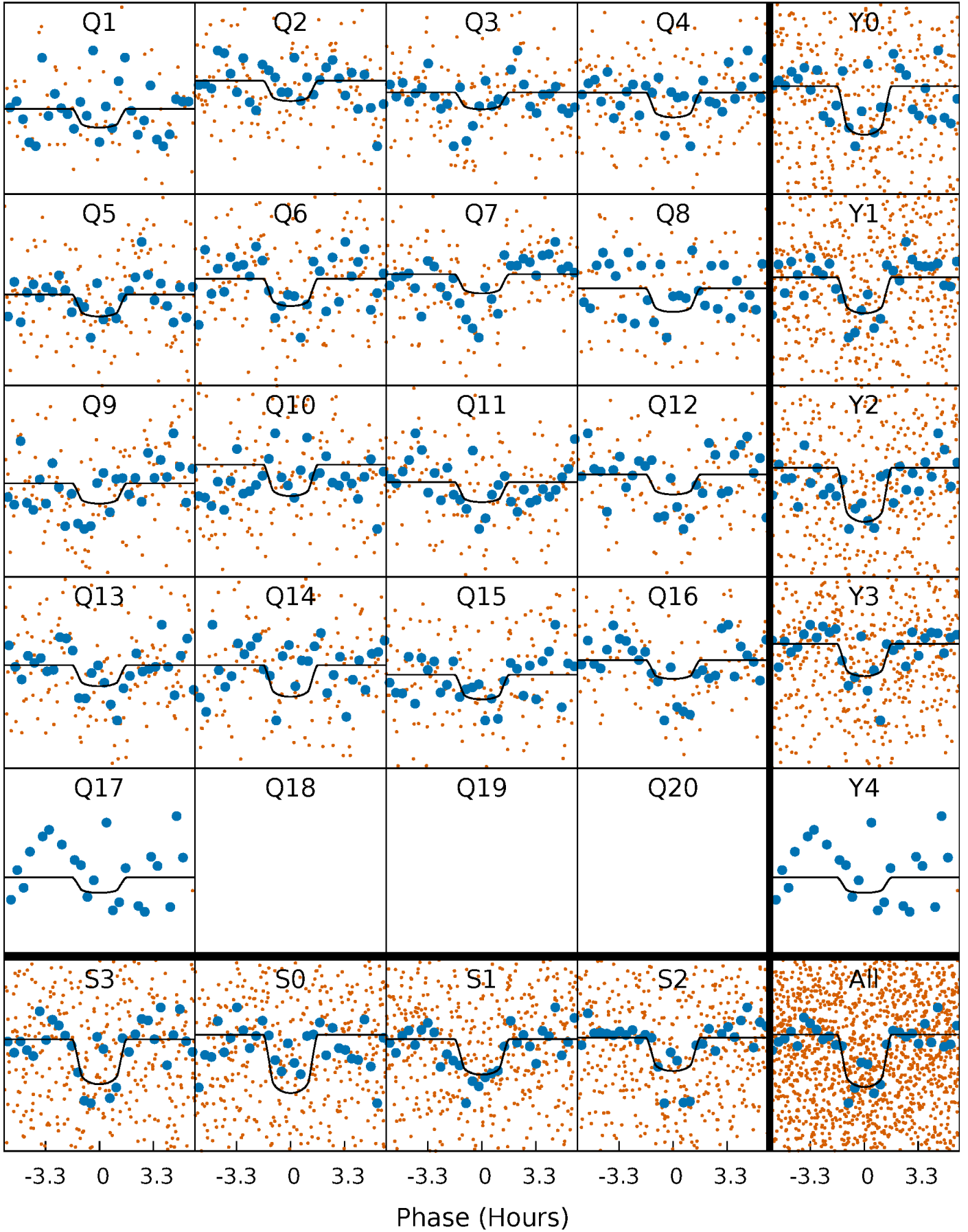
PDC Quarter-Phased Transit Curves

TCE 010730250-01 P= 13.667709 Days $T_0=134.669036$ (BKJD)



DV Quarter-Phased Transit Curves

TCE 010730250-01 P= 13.667709 Days $T_0=134.669036$ (BKJD)



Alt. Detrend Quarter-Phased Transit Curves

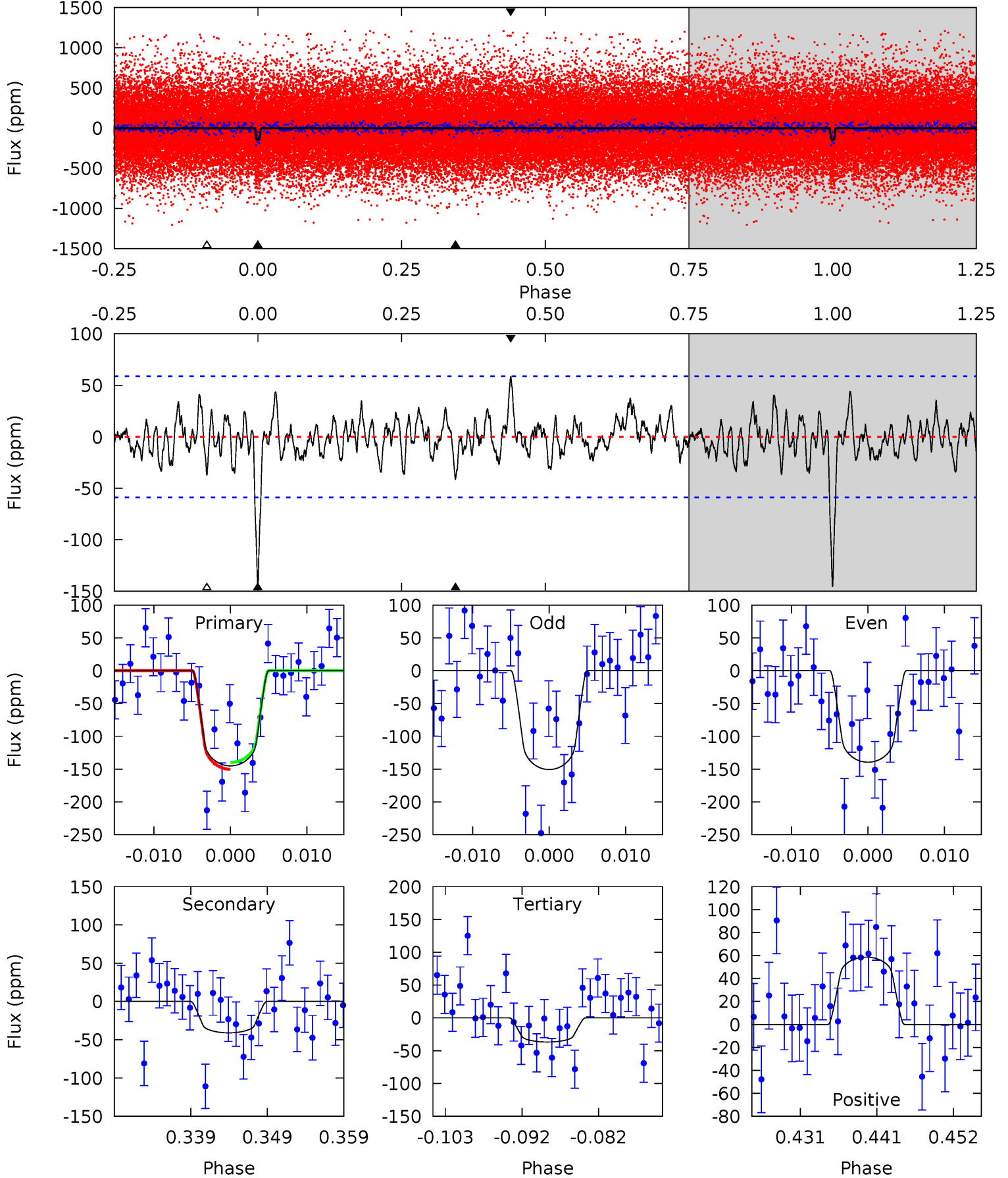
TCE 010730250-01 P= 13.667827 Days $T_0=134.659368$ (BKJD)



DV Model-Shift Uniqueness Test

010730250-01, P = 13.667709 Days, E = 121.001327 Days

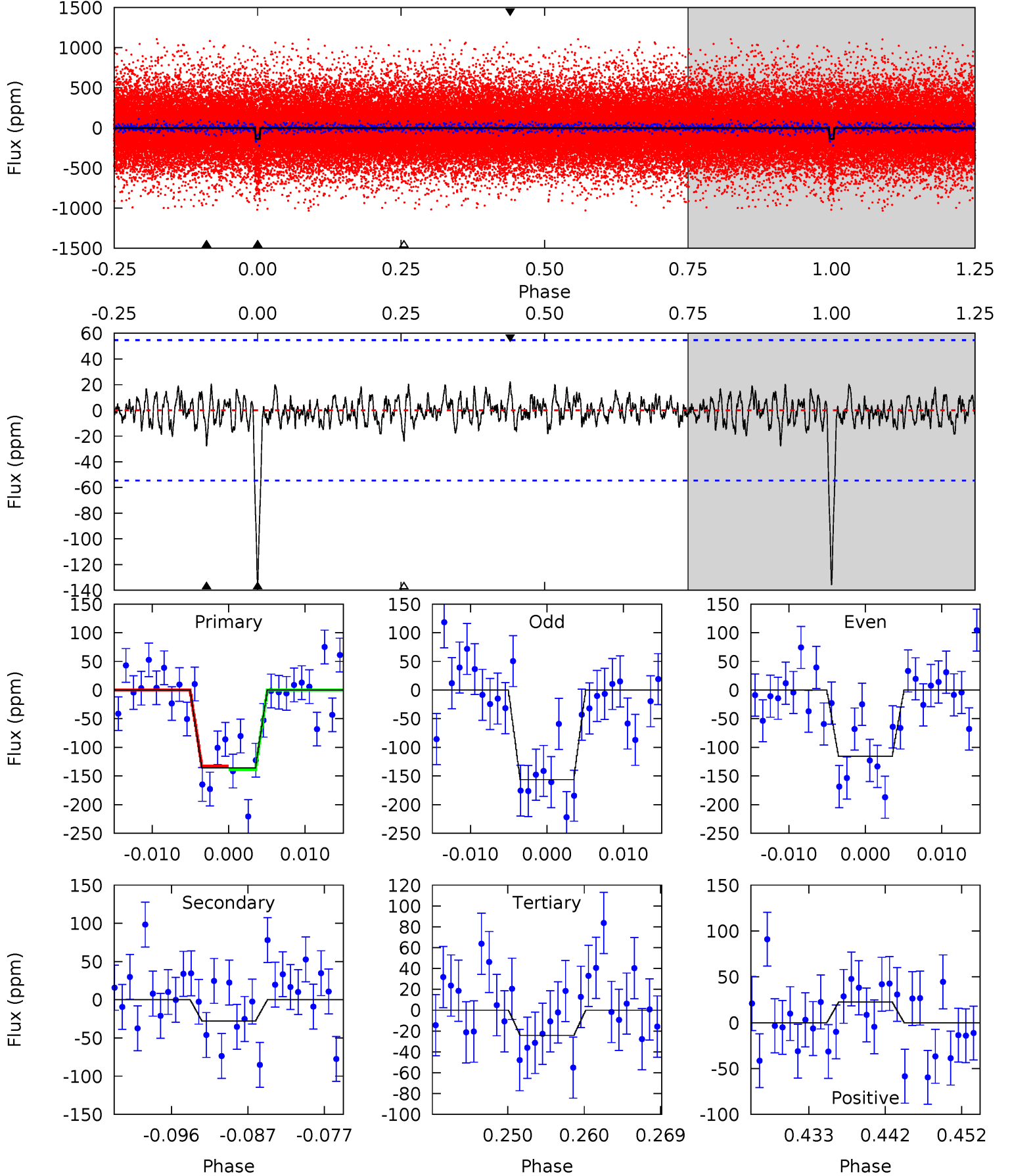
Pri	Sec	Ter	Pos	FA ₁	FA ₂	F _{Red}	Pri-Ter	Pri-Pos	Sec-Ter	Sec-Pos	Odd-Evn	DMM	Shape	TAT
12.4	3.50	3.14	5.00	5.02	2.57	1.27	9.24	7.38	0.36	-1.50	0.48	0.92	0.29	0.45



Alt Model-Shift Uniqueness Test

010730250-01, $P = 13.667827$ Days, $E = 120.991541$ Days

Pri	Sec	Ter	Pos	FA ₁	FA ₂	F _{Red}	Pri-Ter	Pri-Pos	Sec-Ter	Sec-Pos	Odd-Evn	DMM	Shape	TAT
12.5	2.56	2.23	2.07	5.03	2.59	0.72	10.3	10.4	0.33	0.49	1.89	0.87	0.14	0.31



Stellar Parameters For KIC 010730250

	$T_{\text{eff}}(K)$	$\log(g)$	[Fe/H]	$R (R_{\odot})$	$M(M_{\odot})$	$p_{\star} (\text{g}\cdot\text{cm}^{-3})$
	5796^{+155}_{-155}	$4.556^{+0.044}_{-0.176}$	$-0.440^{+0.300}_{-0.300}$	$0.807^{+0.202}_{-0.072}$	$0.856^{+0.096}_{-0.088}$	$2.293^{+0.526}_{-1.057}$
	+3%/-3%	+1%/-4%	+68%/-68%	+25%/-9%	+11%/-10%	+23%/-46%
Source	PHO1	KIC0	KIC0	DSEP		

KIC = Kepler Input Catalog; PHO = Photometry; SPE = Spectroscopy; AST = Asteroseismology
 TRA = Transits; DESP = Dartmouth Models; MULT = Multiple Models

Secondary Eclipse Parameters for KIC 010730250-01 / KOI 8030.01

Detrend	Depth (ppm)	$R_p (R_{\oplus})$	$T_{max} (K)$	$T_{obs} (K)$	A_{obs}
DV	-41 ± 12	$1.29^{+0.75}_{-0.68}$	1006^{+62}_{-44}	4182^{+1527}_{-614}	153^{+530}_{-94}
Alt.	-28 ± 11	$1.19^{+0.76}_{-0.68}$	1010^{+62}_{-46}	4003^{+1614}_{-678}	115^{+541}_{-77}

T_{max} = Theoretical Maximum Planetary Temperature

T_{obs} = Observed Planetary Temperature (Assuming $A=0.3$)

A_{obs} = Observed Albedo (Assuming $T=0$)

If a secondary eclipse is present, the system is likely an EB if $T_{obs} \gg T_{max}$ AND $A_{obs} \gg 1.0$

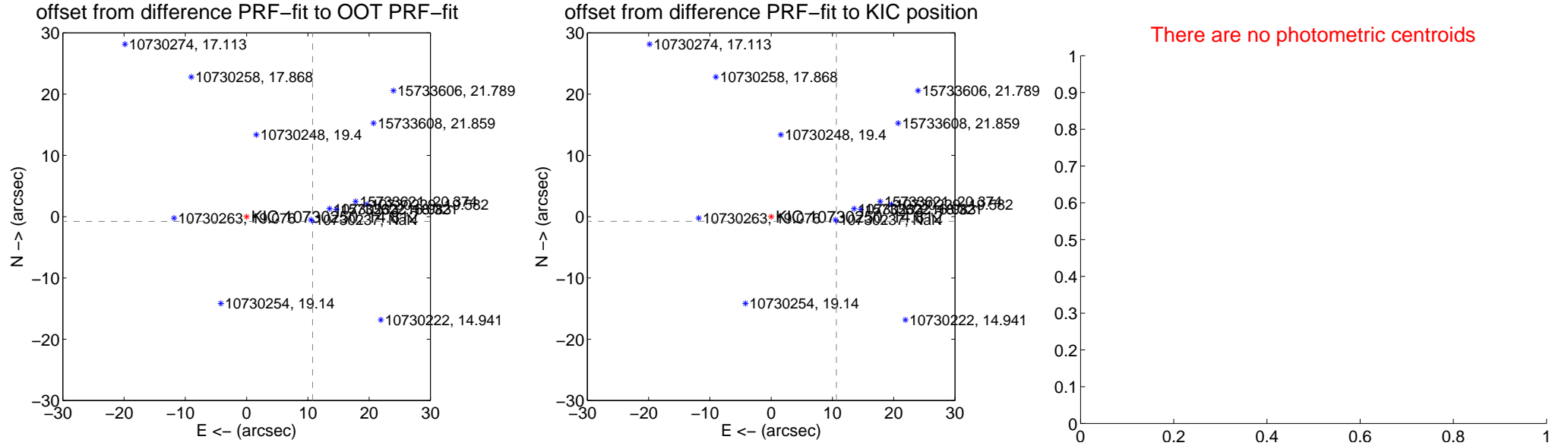
DV Centroid Data

Supplemental centroid analysis for 010730250-01. Kepler magnitude: 14.81. Transit SNR 7.83

There are 12 quarters with good PRF difference image offsets

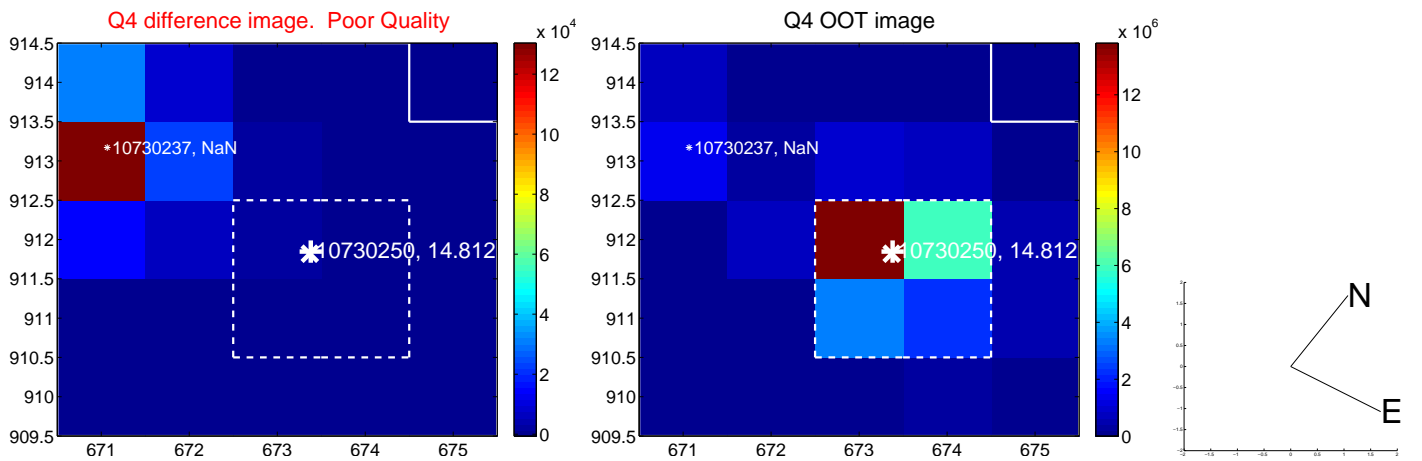
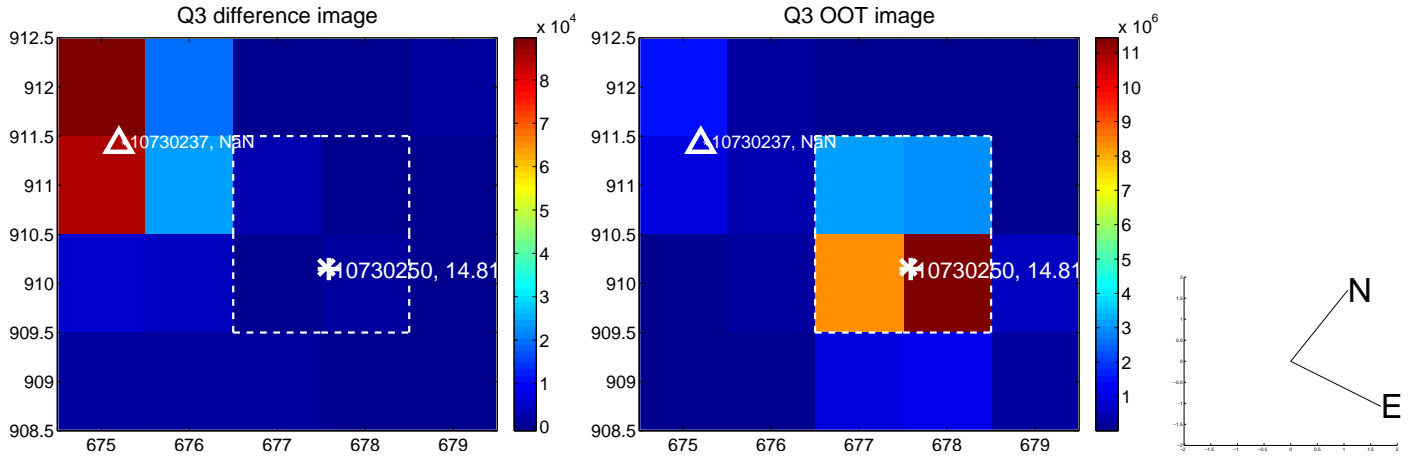
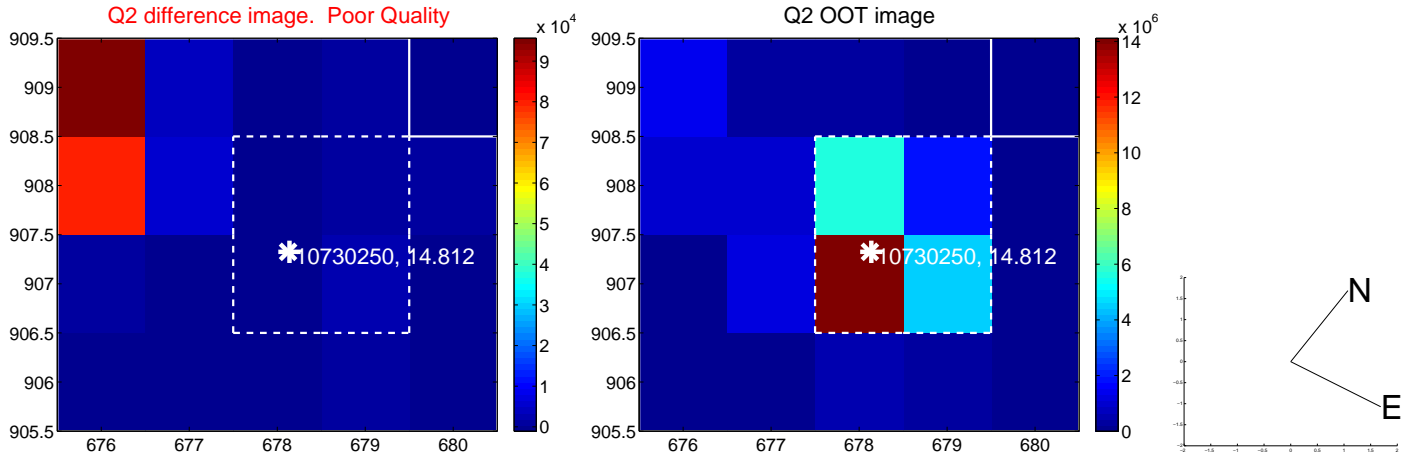
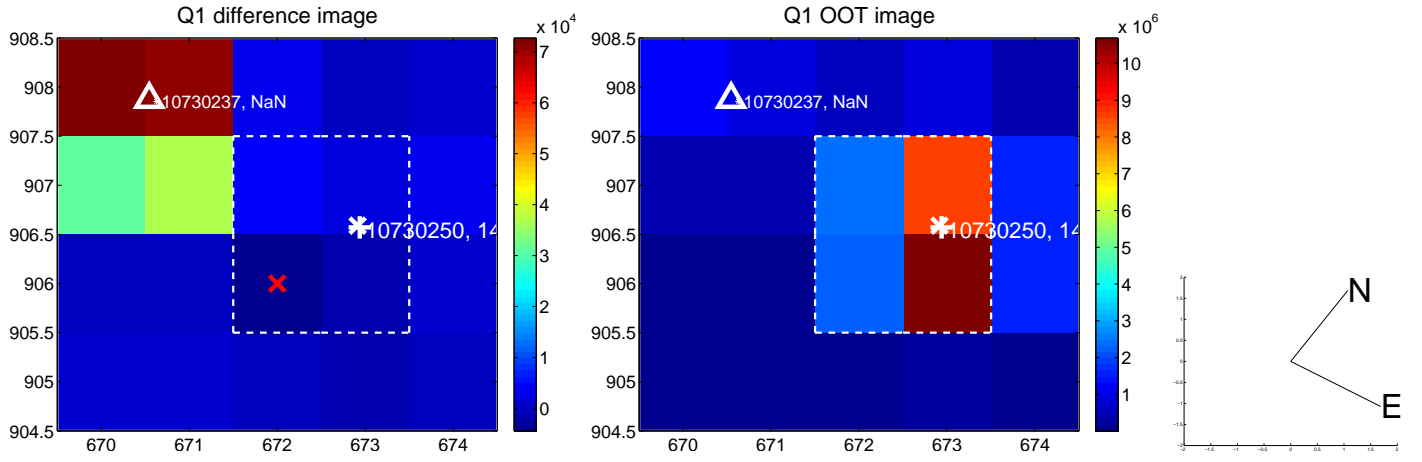
The direct PRF centroid is offset from the target star catalog position by about 0.14 arcsec

	Distance in arcsec	Distance / σ	Δ RA	Δ Dec
PRF-fit source offset from OOT	10.800 \pm 0.071	151.53	-10.771 \pm 0.071	-0.781 \pm 0.067
PRF-fit source offset from KIC position	10.674 \pm 0.069	155.53	-10.647 \pm 0.069	-0.765 \pm 0.068
photometric centroid source offset	—	—	—	—

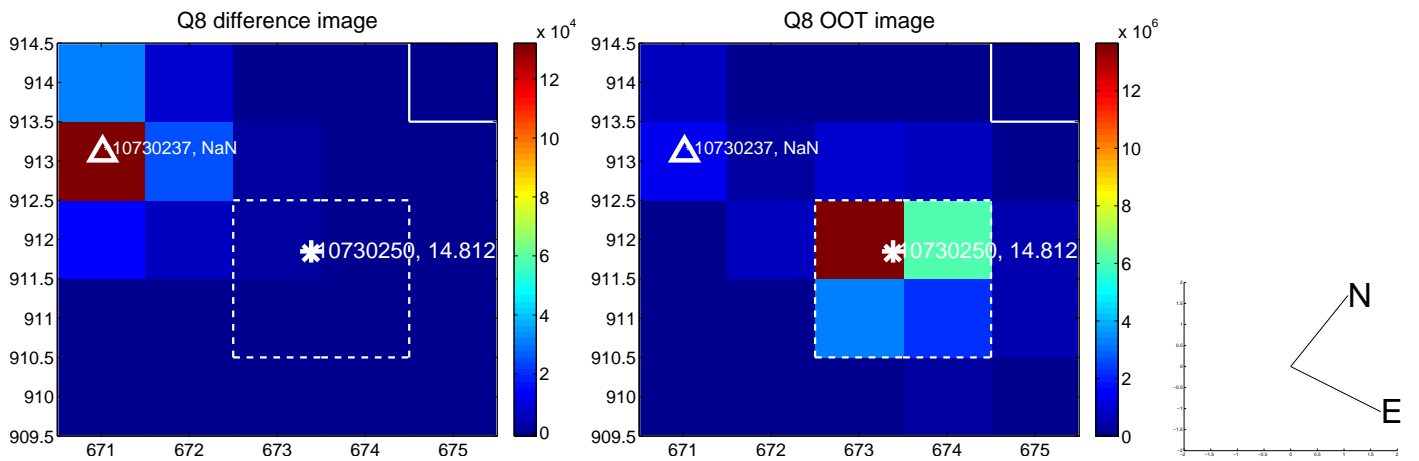
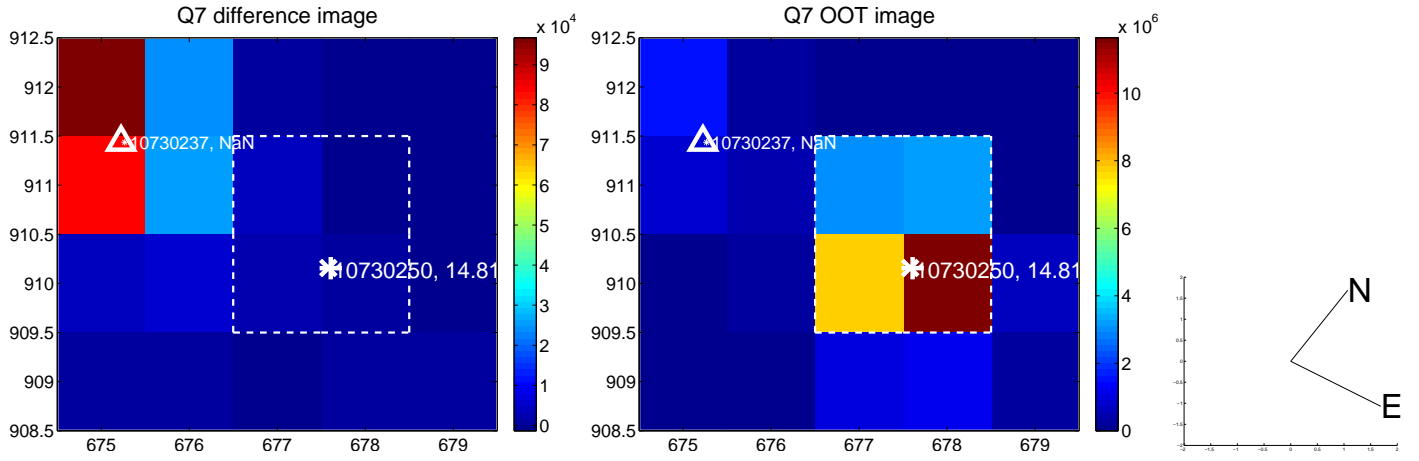
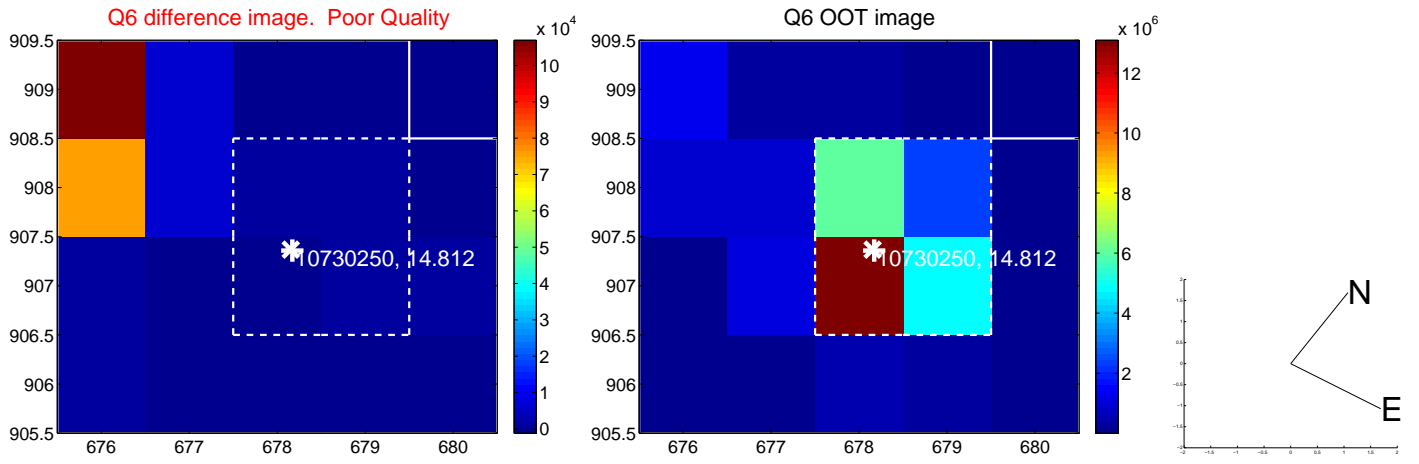
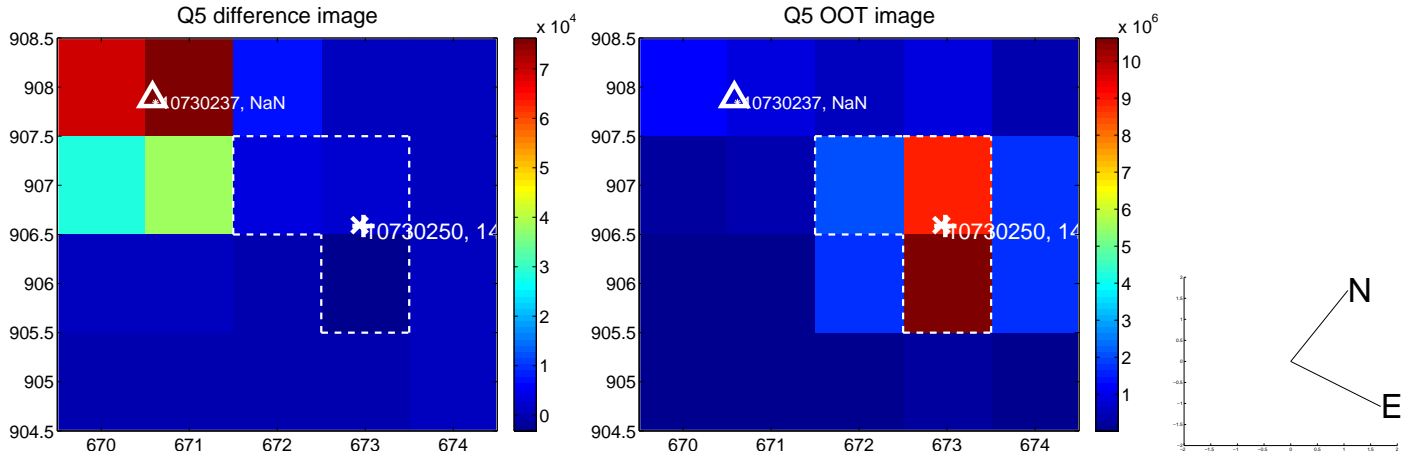


Centroid source offsets from the target star reconstructed from PRF and photometric centroids. **Sky blue crosses: good quarterly centroid offsets; Vermillion crosses: bad quarterly centroid offsets**; magenta cross: average over quarters. Length of the crosses: one- σ uncertainty. Blue circle: three- σ . Red *: target star. Blue *: Other stars. Text next to a star gives its KIC ID and kepmag. KIC IDs > 15,000,000 are from the UKIRT catalog.

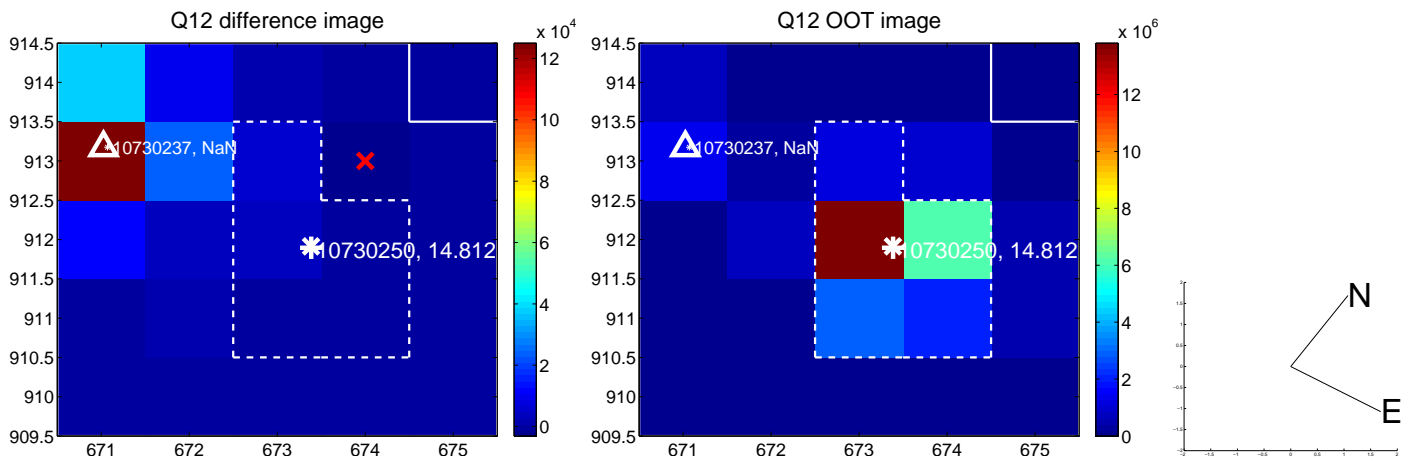
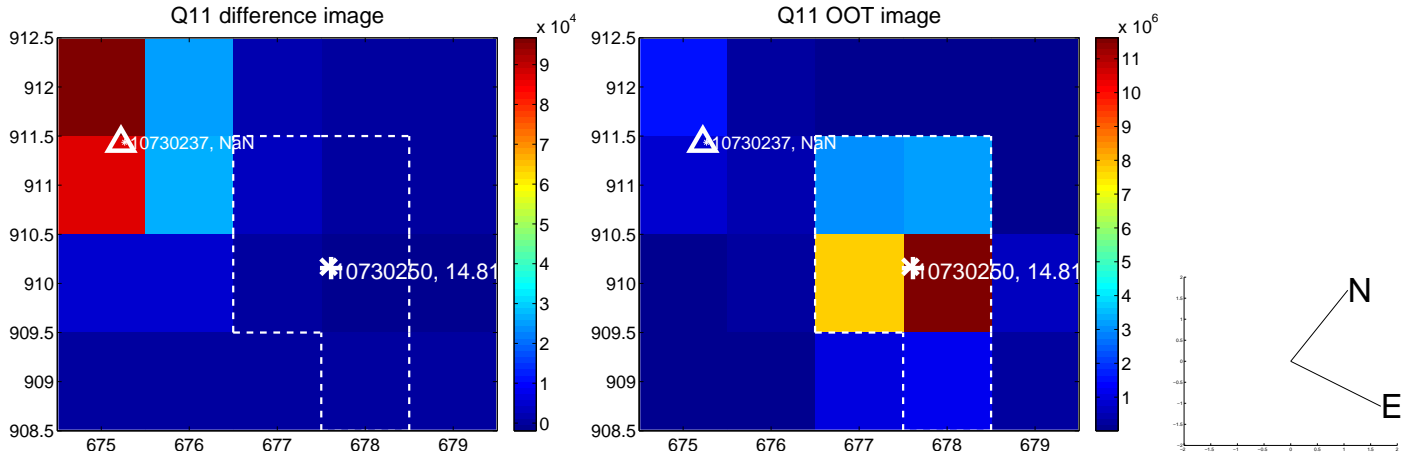
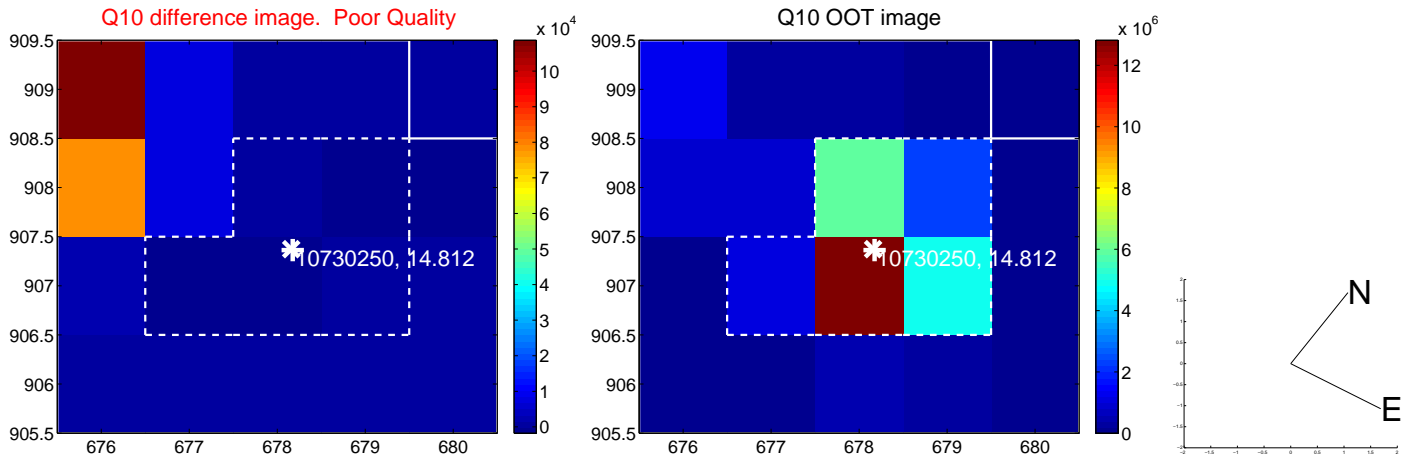
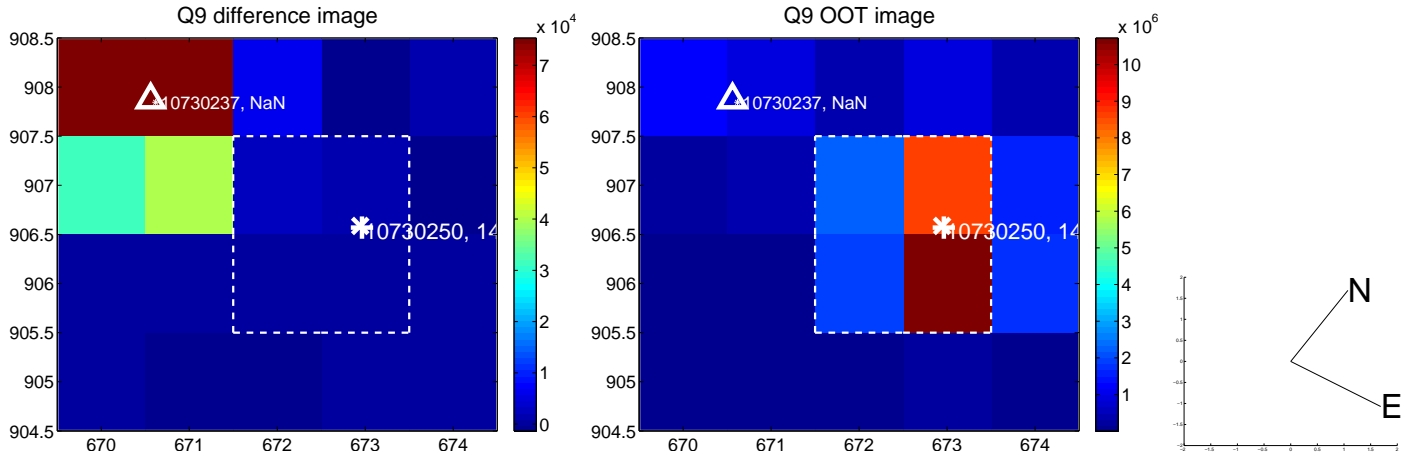
white \times : KIC target position; +: OOT centroid; \triangle : difference centroid. red \times : large negative pixel value.



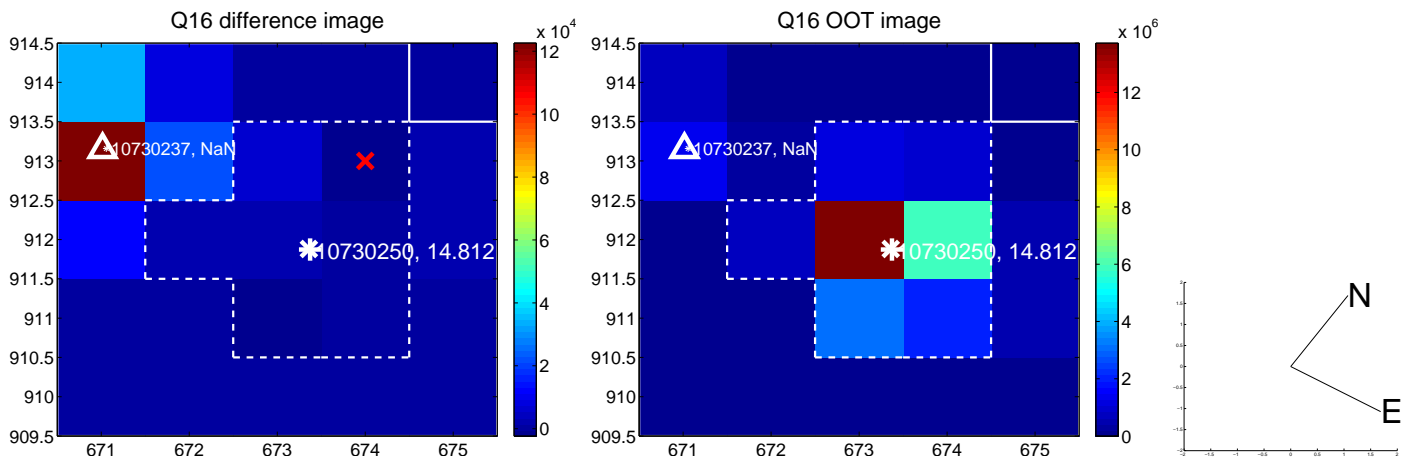
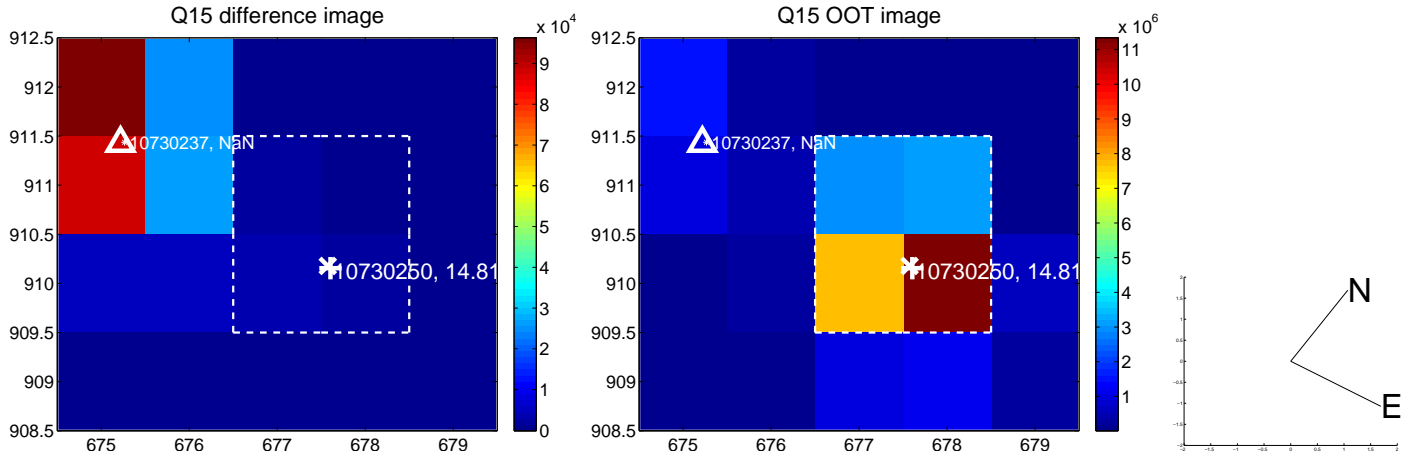
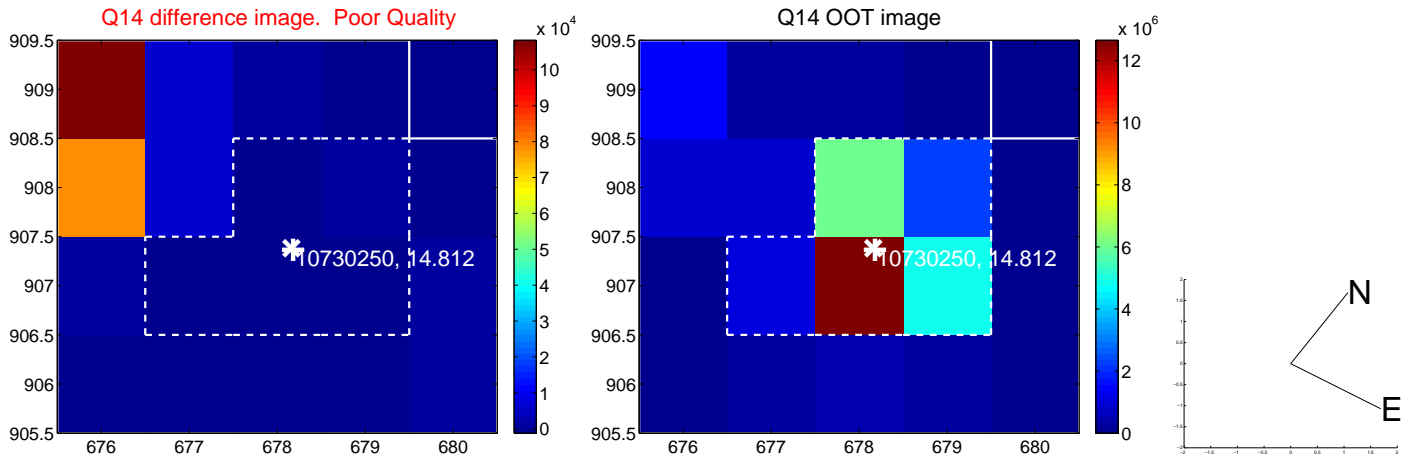
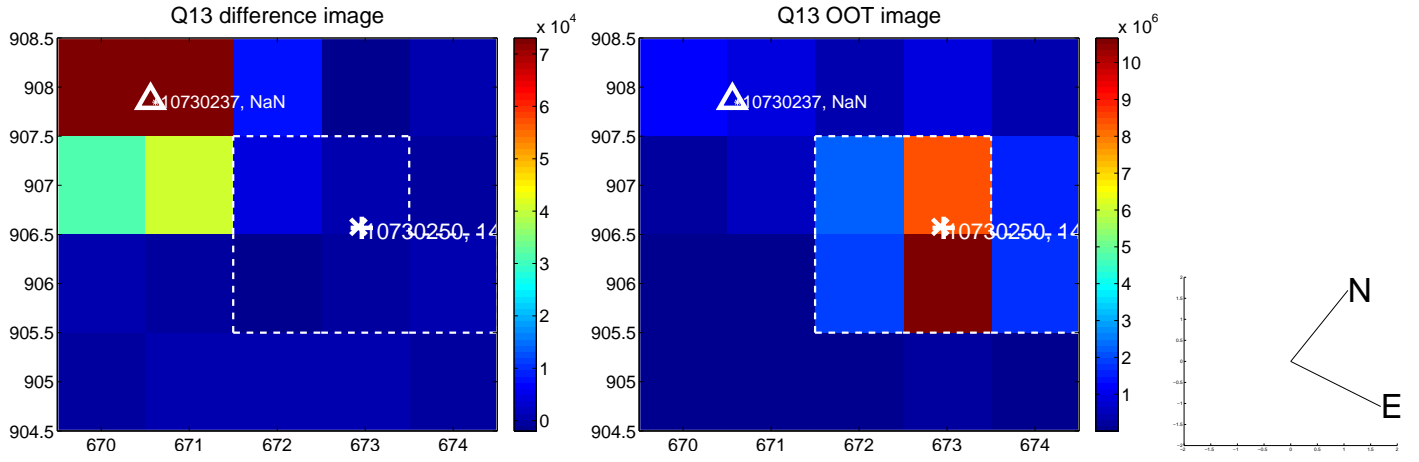
white \times : KIC target position; $+$: OOT centroid; \triangle : difference centroid. red \times : large negative pixel value.



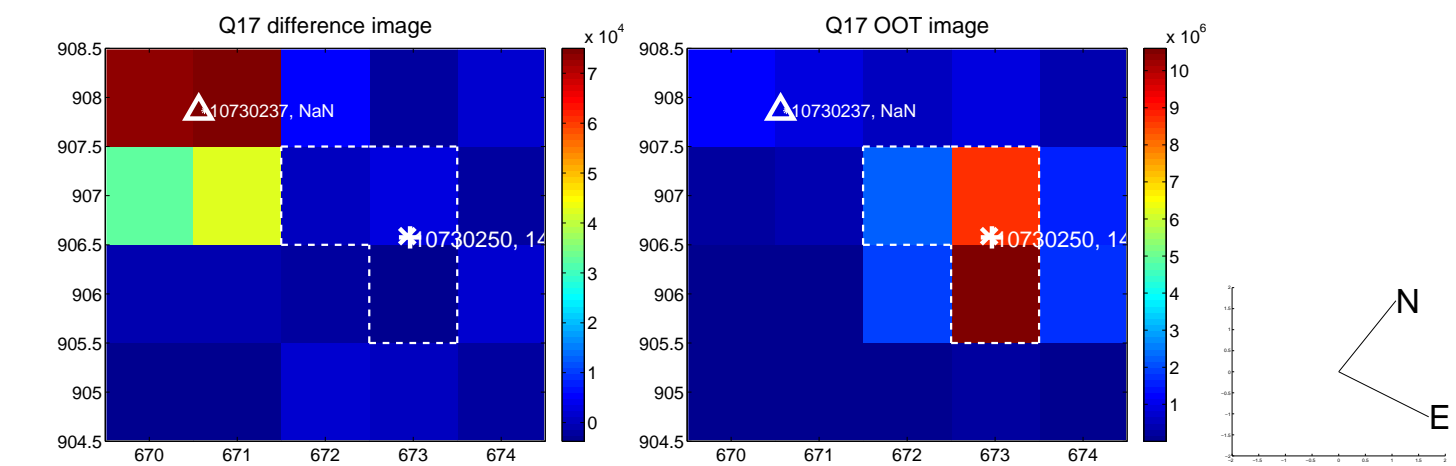
white \times : KIC target position; +: OOT centroid; \triangle : difference centroid. red \times : large negative pixel value.



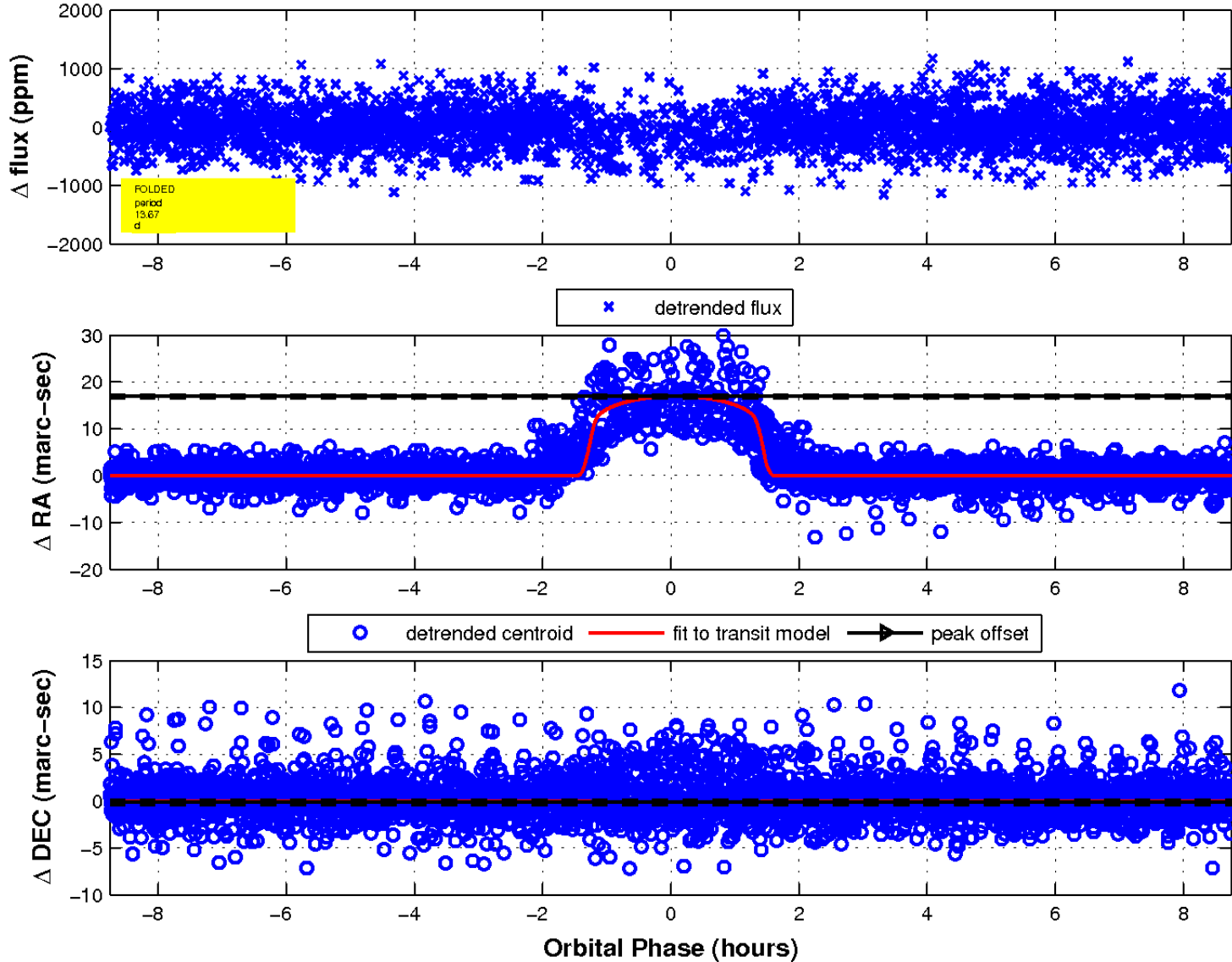
white \times : KIC target position; $+$: OOT centroid; \triangle : difference centroid. red \times : large negative pixel value.



white \times : KIC target position; $+$: OOT centroid; \triangle : difference centroid. red \times : large negative pixel value.



fluxWeightedCentroids, Planet 1 of 1



UKIRT Image

Declination

