

KIC 010670250

Q1-17 DR25 TCE Parameters

TCE	Run Type	KOI?	Period (Days)	Epoch (BKJD)	Depth (ppm)	Duration (Hours)	MES	SNR	R_{\star} (R_{\odot})	T_{\star} (K)	R_p (R_{\oplus})	S_p (S_{\oplus})
010670250-01	OBS	No	0.931256	131.864321	26.8	3.865	7.4	6.4	1.05	6240	0.54	4129.48

Robovetter Results

TCE	Run Type	Disp	Score	N	S	C	E	Comments
010670250-01	OBS	FP	0.00	1	0	0	0	LPP_DV

Notes: OBS = Observed. INJ = Injected. INV = Inverted. SCR = Scrambled.

N = Not Transit-Like. S = Stellar Eclipse. C = Centroid Offset. E = Ephemeris Match.

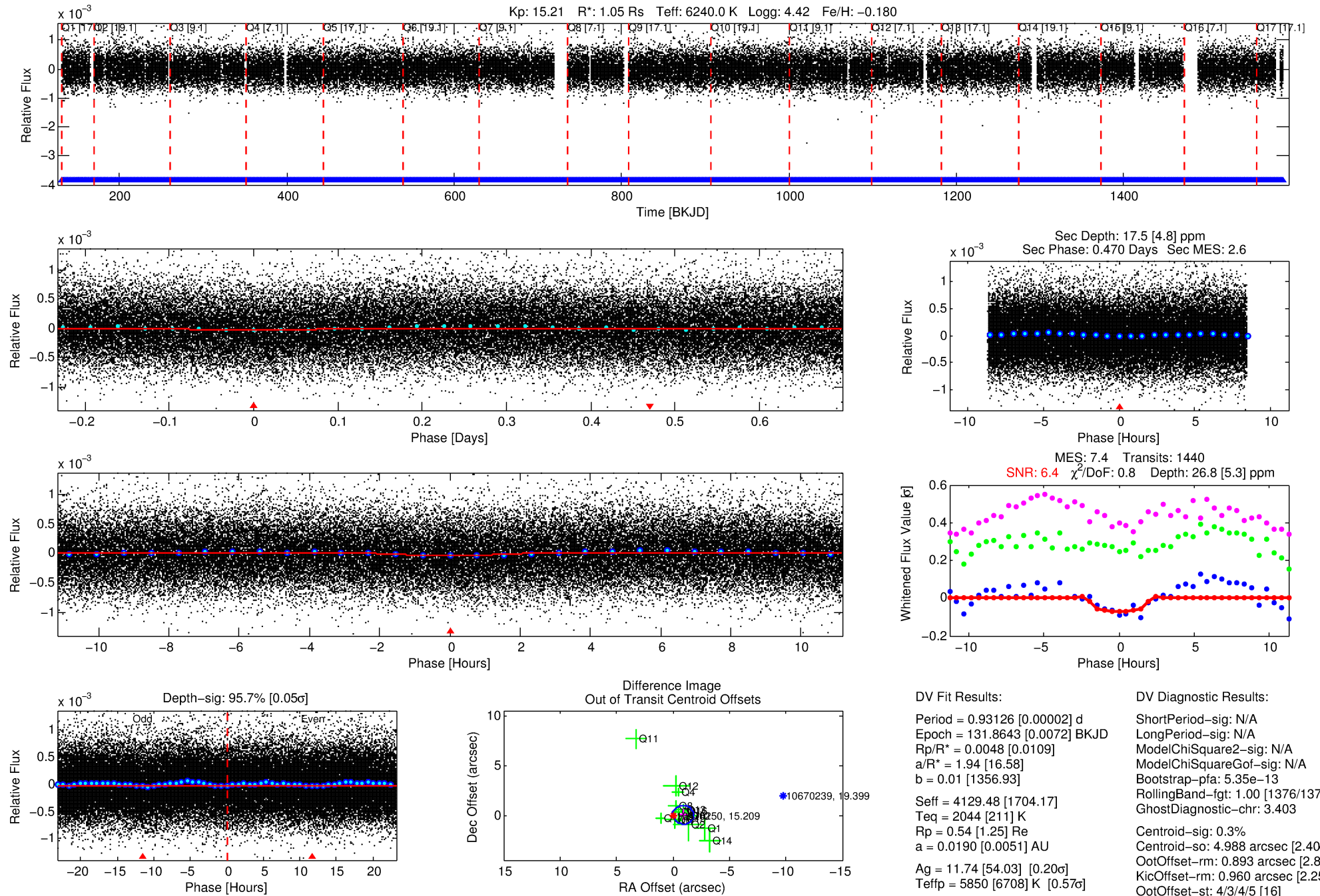
See http://exoplanetarchive.ipac.caltech.edu/docs/API_kepcandidate_columns.html#proj_disp_col for comment definitions.

Ephemeris Match Information For 010670250-01

No Significant Match Found

DV One-Page Summary

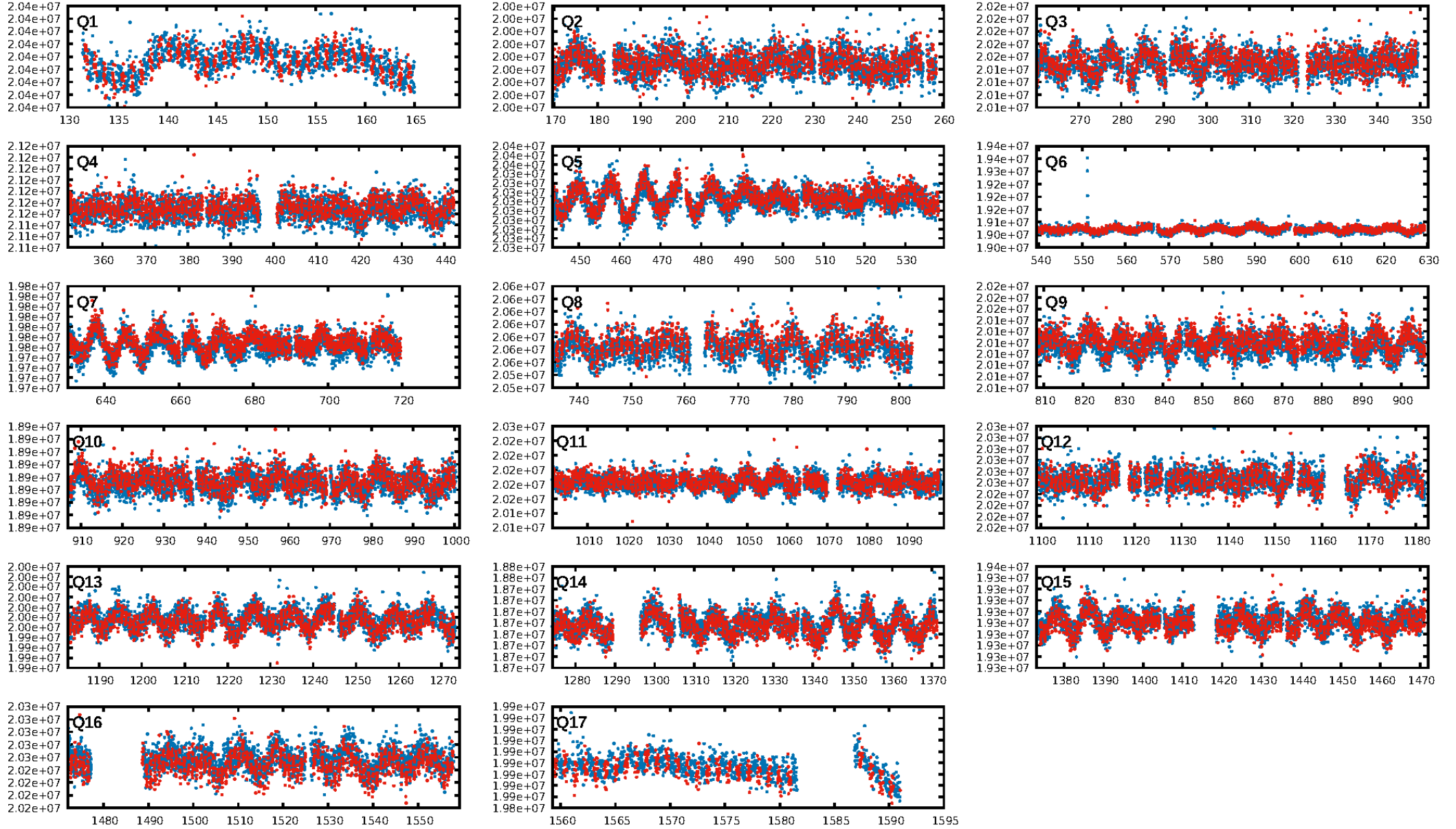
KIC: 10670250 Candidate: 1 of 1 Period: 0.931 d



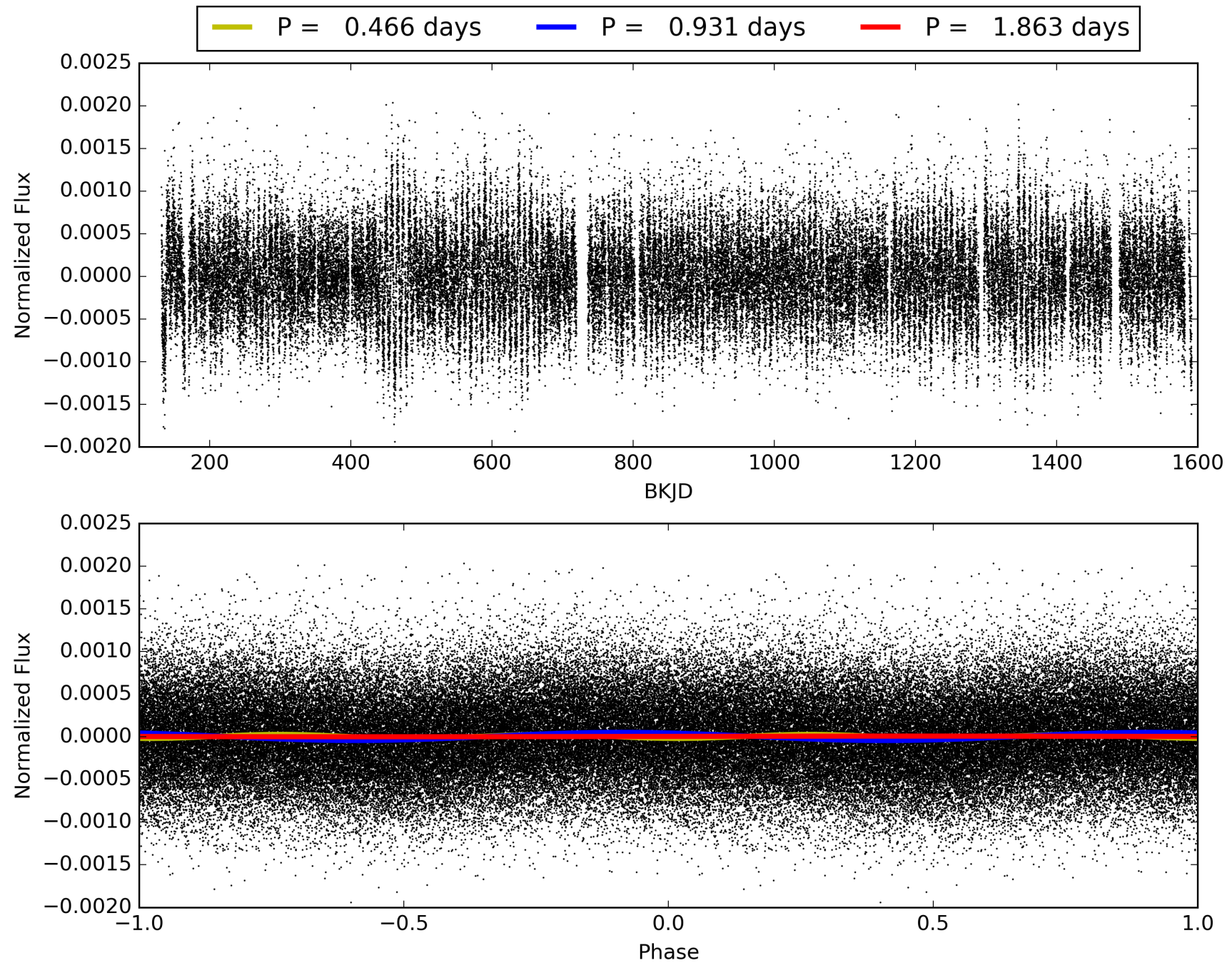
Software Revision: svn+ssh://murzim/repo/soc/tags/release/9.3.42@60958 -- Date Generated: 29-Jan-2016 01:02:46 Z

This Data Validation Report Summary was produced in the Kepler Science Operations Center Pipeline at NASA Ames Research Center

TCE 010670250-01, PDC Light Curves

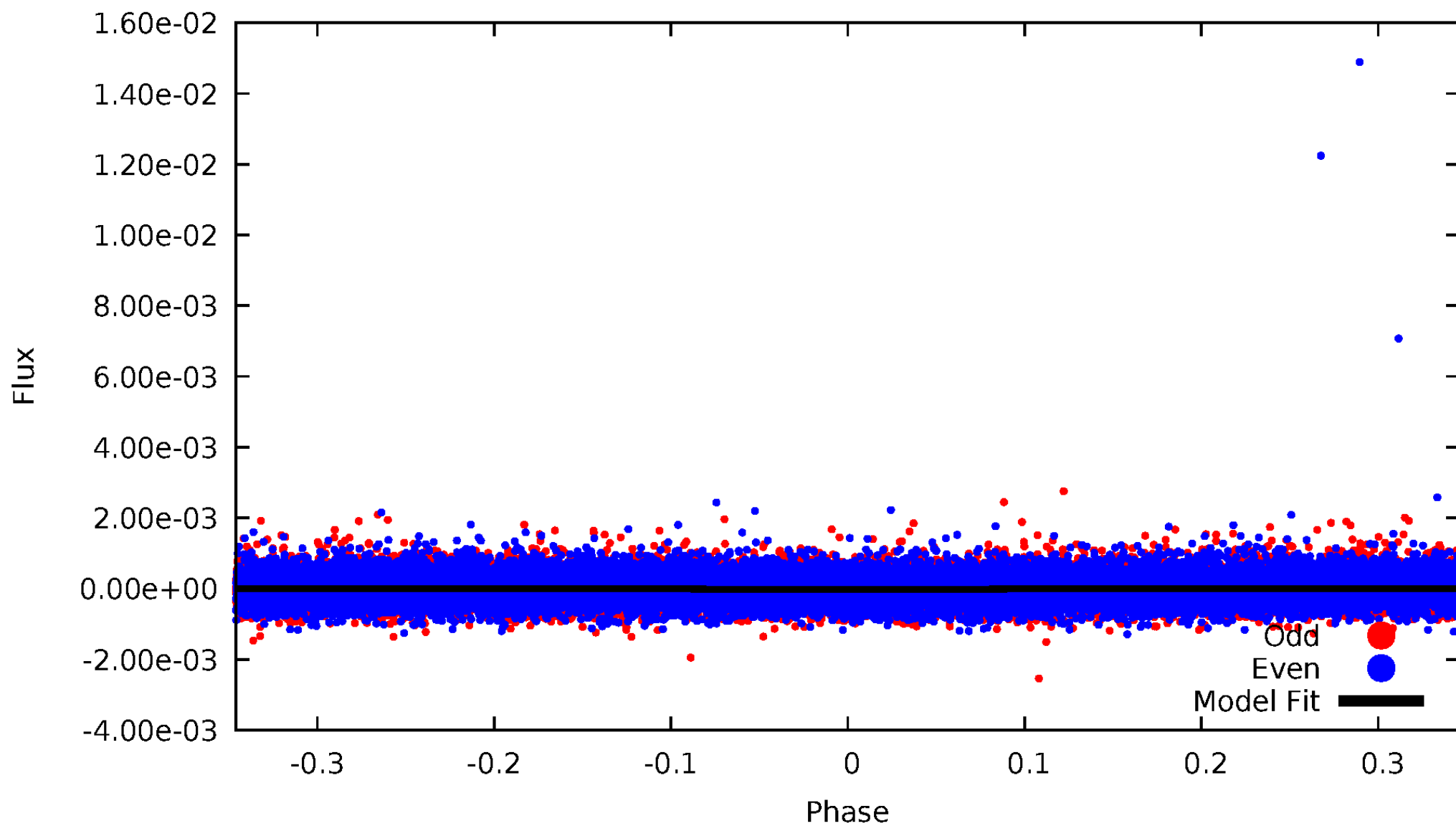


TCE 010670250-01



DV Odd/Even

TCE 010670250-01

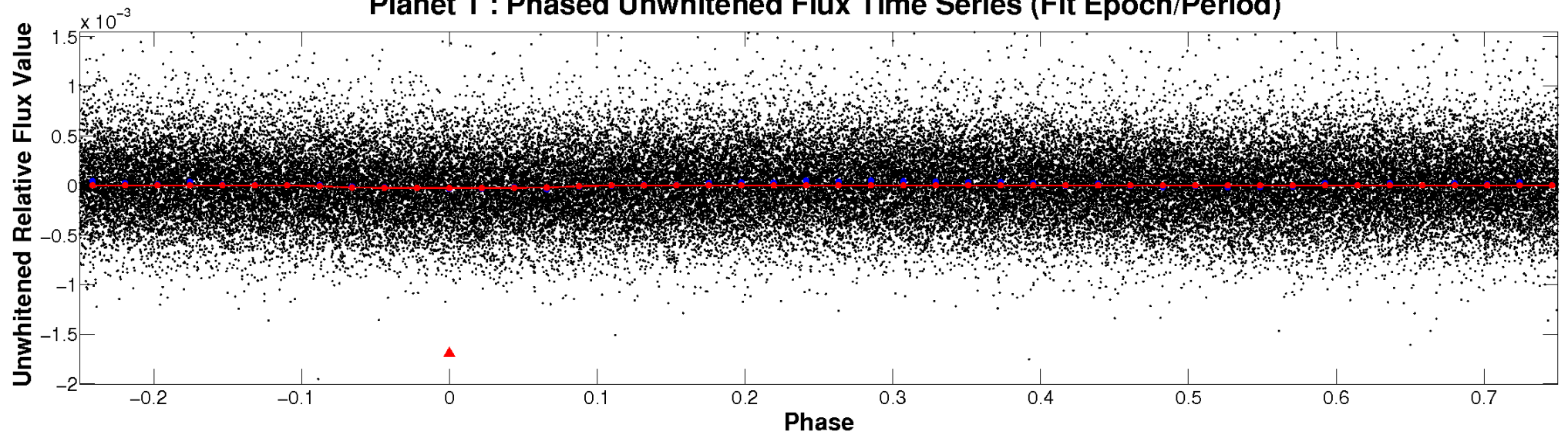


ALT Odd/Even

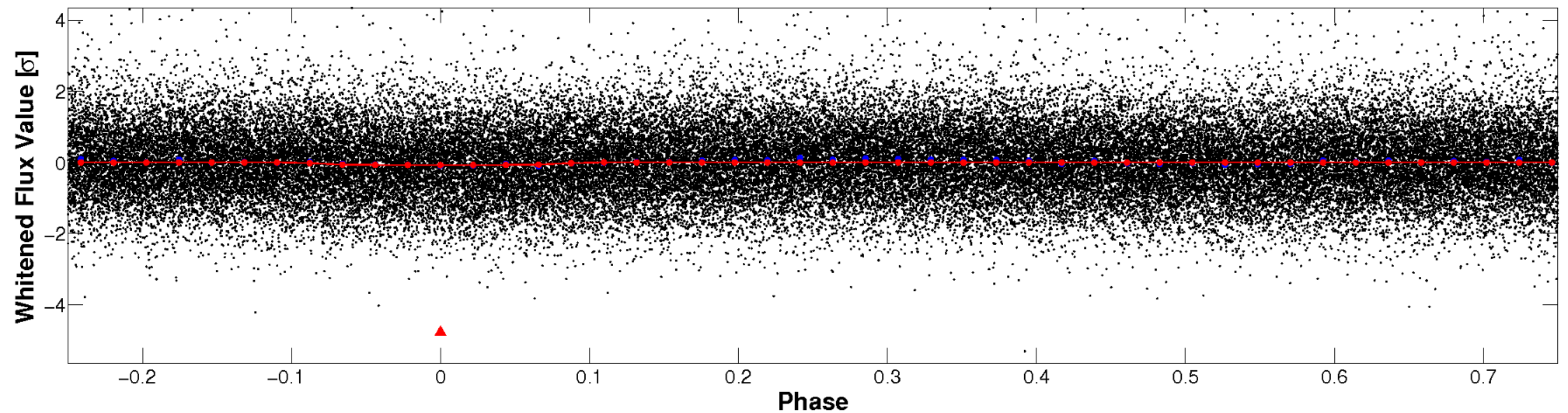
This plot does not exist for this TCE.

Non-Whitened Vs. Whitened Light Curve

Planet 1 : Phased Unwhitened Flux Time Series (Fit Epoch/Period)

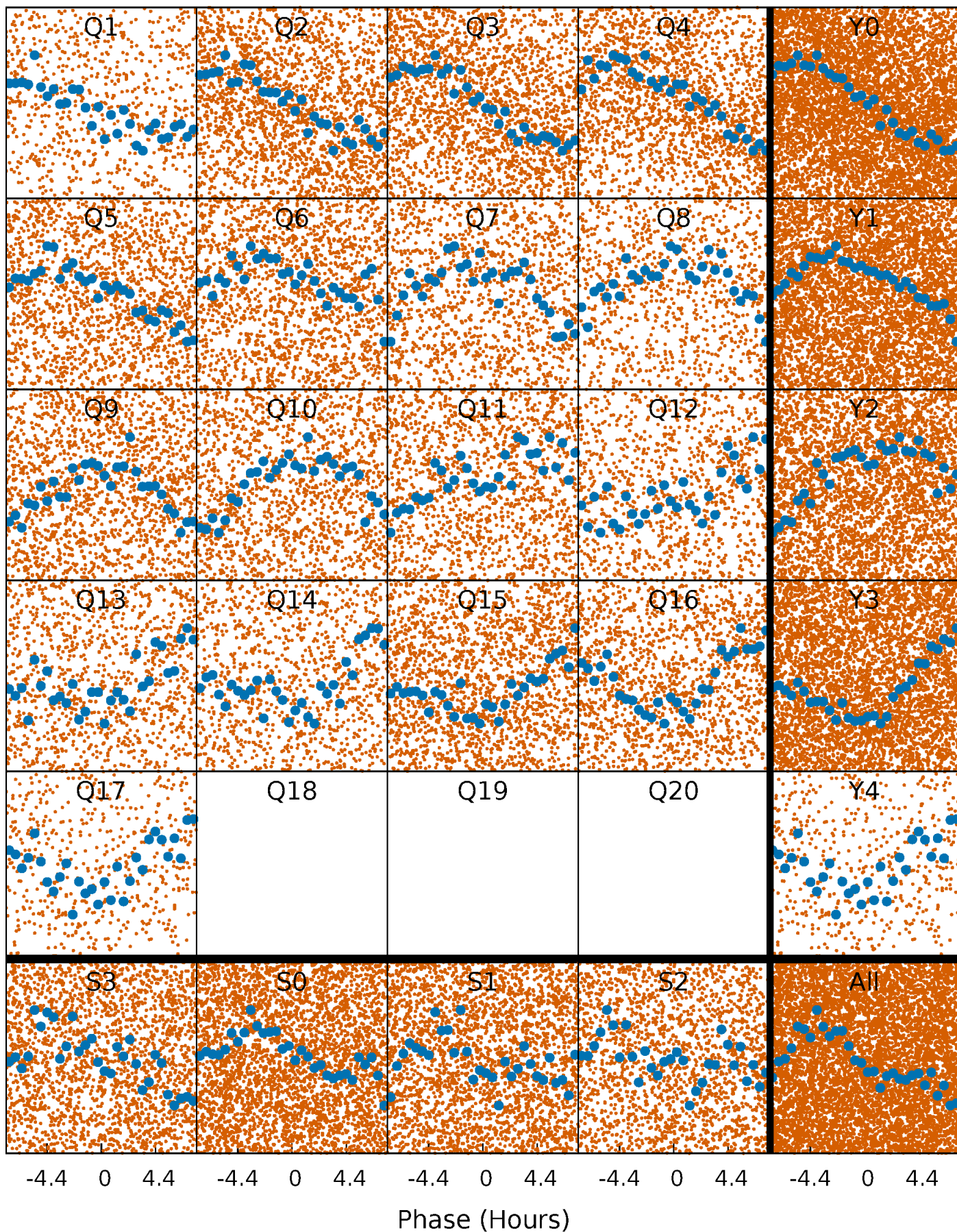


Planet 1 : Phased Whitened Flux Time Series (Fit Epoch/Period)



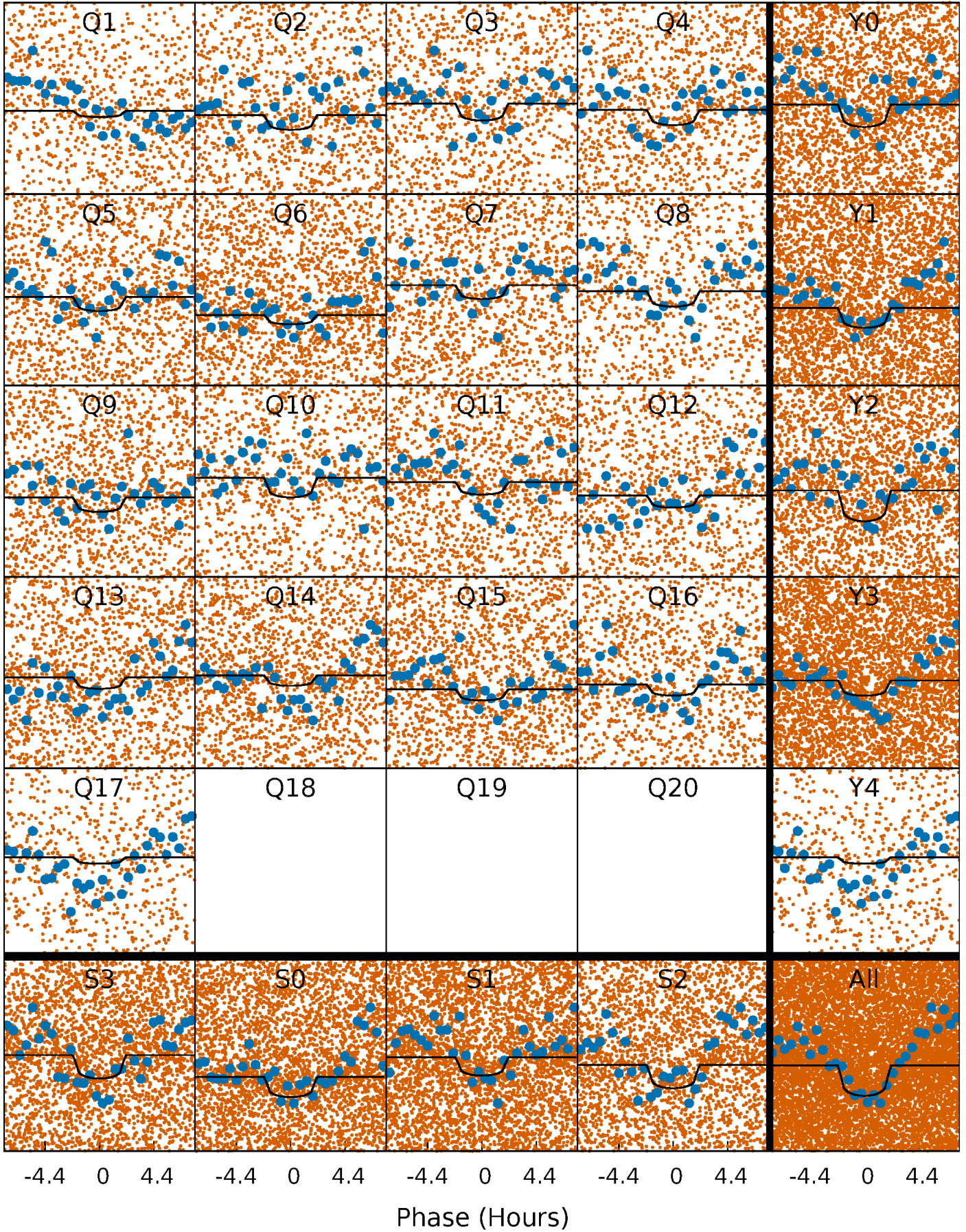
PDC Quarter-Phased Transit Curves

TCE 010670250-01 P= 0.931256 Days $T_0=131.864321$ (BKJD)



DV Quarter-Phased Transit Curves

TCE 010670250-01 P= 0.931256 Days $T_0=131.864321$ (BKJD)

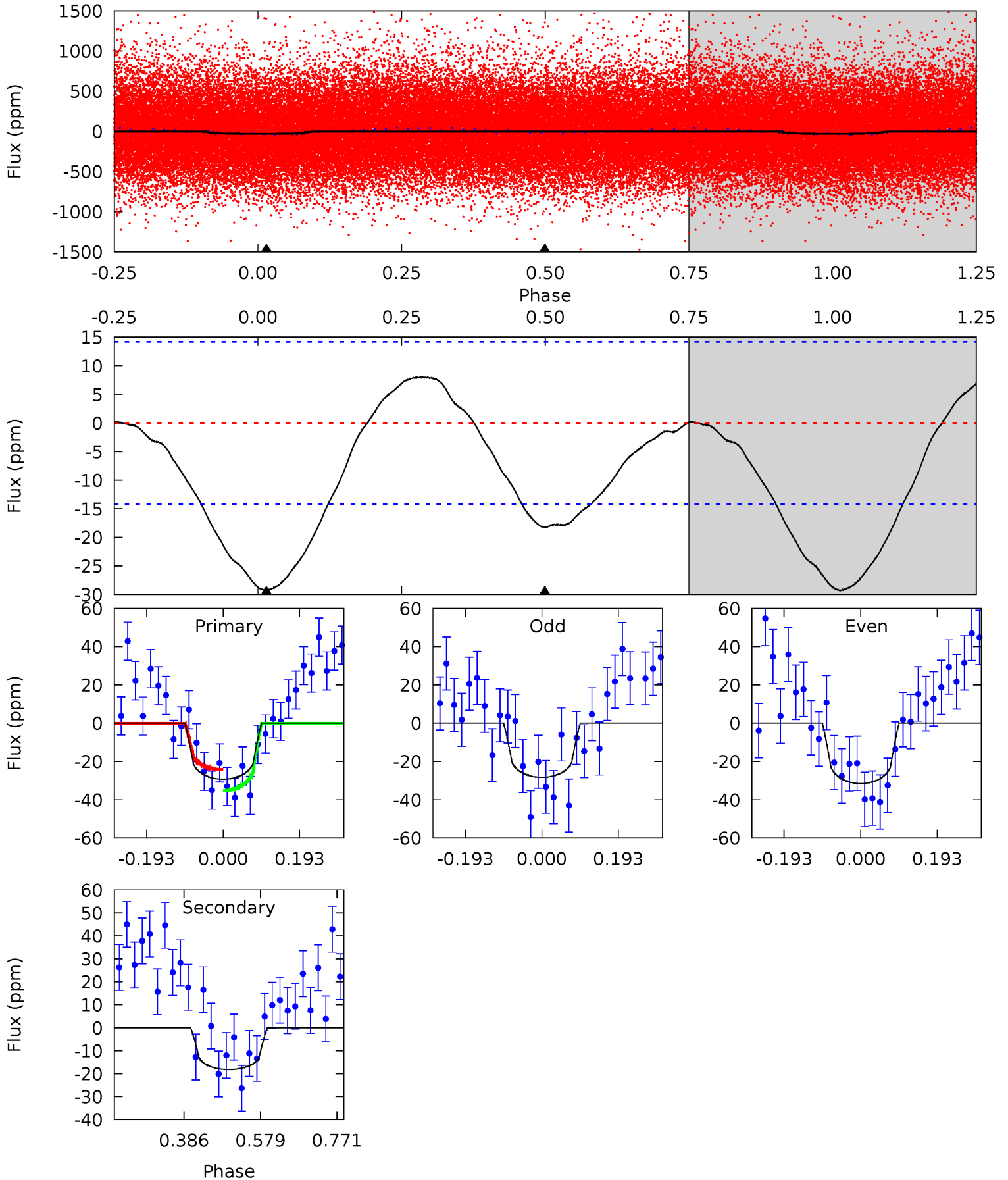


This plot does not exist for this TCE.

DV Model-Shift Uniqueness Test

010670250-01, P = 0.931256 Days, E = 130.933065 Days

Pri	Sec	Ter	Pos	FA ₁	FA ₂	F _{Red}	Pri-Ter	Pri-Pos	Sec-Ter	Sec-Pos	Odd-Evn	DMM	Shape	TAT
9.13	5.68	0	0	4.43	1.30	1.26	9.13	9.13	5.68	5.68	0.51	0.89	0.21	1.72



Alt Model-Shift Uniqueness Test

This plot does not exist for this TCE.

Stellar Parameters For KIC 010670250

	$T_{\text{eff}}(K)$	$\log(g)$	[Fe/H]	$R (R_{\odot})$	$M(M_{\odot})$	$p_{\star} (\text{g}\cdot\text{cm}^{-3})$
	6240^{+175}_{-219}	$4.420^{+0.070}_{-0.210}$	$-0.180^{+0.250}_{-0.300}$	$1.046^{+0.339}_{-0.121}$	$1.043^{+0.173}_{-0.129}$	$1.285^{+0.492}_{-0.681}$
	+3%/-4%	+2%/-5%	+139%/-167%	+32%/-12%	+17%/-12%	+38%/-53%
Source	PHO1	KIC0	KIC0	DSEP		

KIC = Kepler Input Catalog; PHO = Photometry; SPE = Spectroscopy; AST = Asteroseismology
 TRA = Transits; DESP = Dartmouth Models; MULT = Multiple Models

Secondary Eclipse Parameters for KIC 010670250-01 / KOI

Detrend	Depth (ppm)	$R_p (R_{\oplus})$	$T_{max} (K)$	$T_{obs} (K)$	A_{obs}
DV	-18 ± 3	$1.17^{+1.08}_{-0.79}$	2901^{+206}_{-153}	4244^{+3073}_{-1094}	$2.595^{+22.708}_{-1.913}$
Alt.	N/A	N/A	N/A	N/A	N/A

T_{max} = Theoretical Maximum Planetary Temperature

T_{obs} = Observed Planetary Temperature (Assuming A=0.3)

A_{obs} = Observed Albedo (Assuming T=0)

If a secondary eclipse is present, the system is likely an EB if $T_{obs} \gg T_{max}$ AND $A_{obs} \gg 1.0$

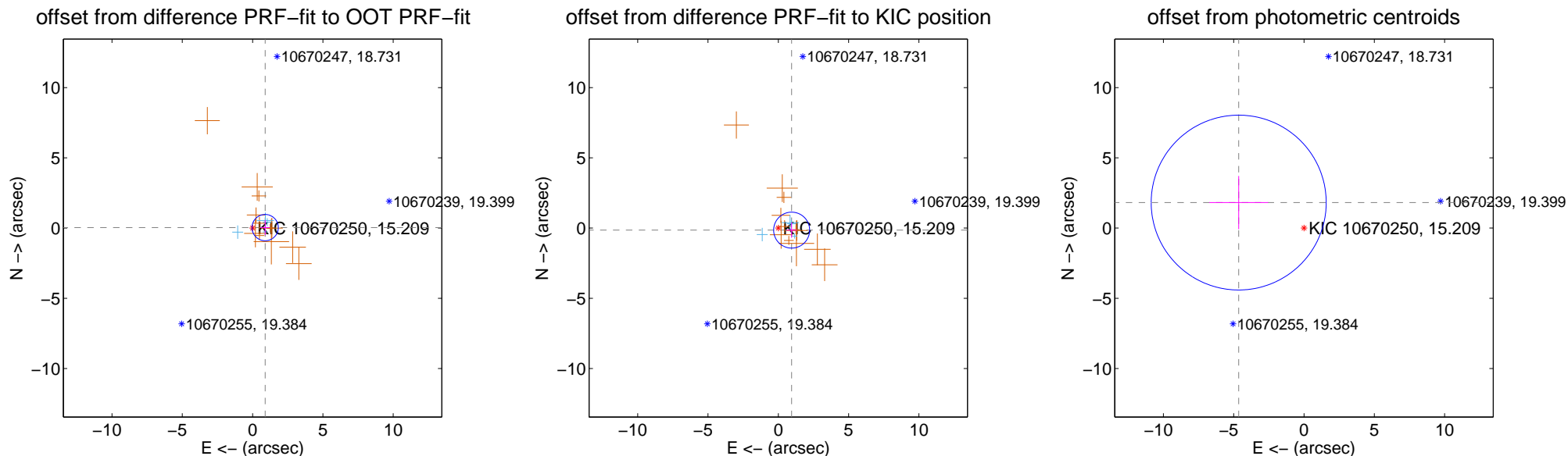
DV Centroid Data

Supplemental centroid analysis for 010670250-01. Kepler magnitude: 15.21. Transit SNR 6.42

There are 4 quarters with good PRF difference image offsets

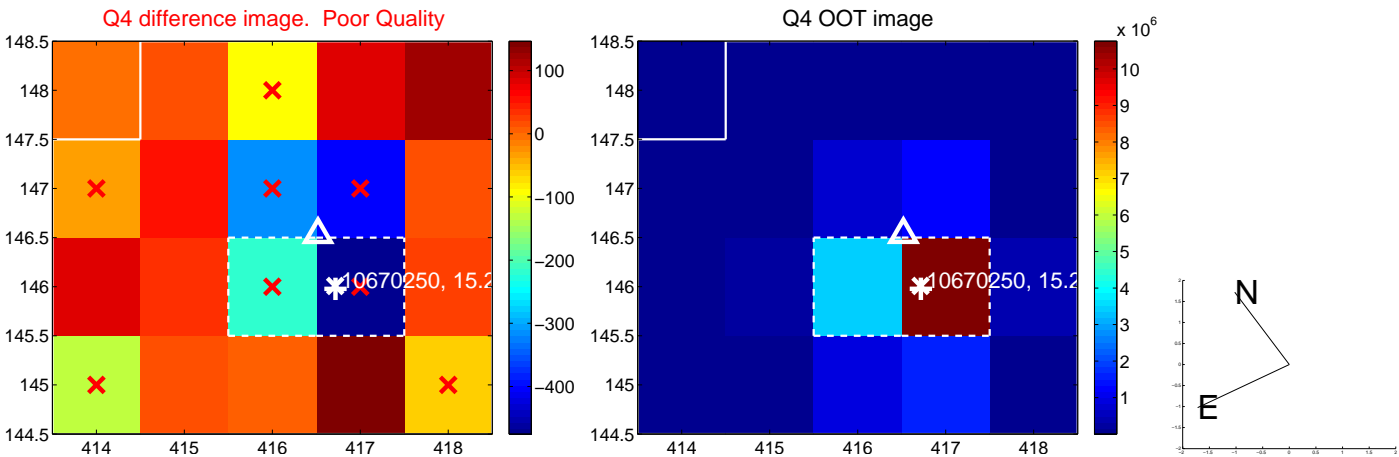
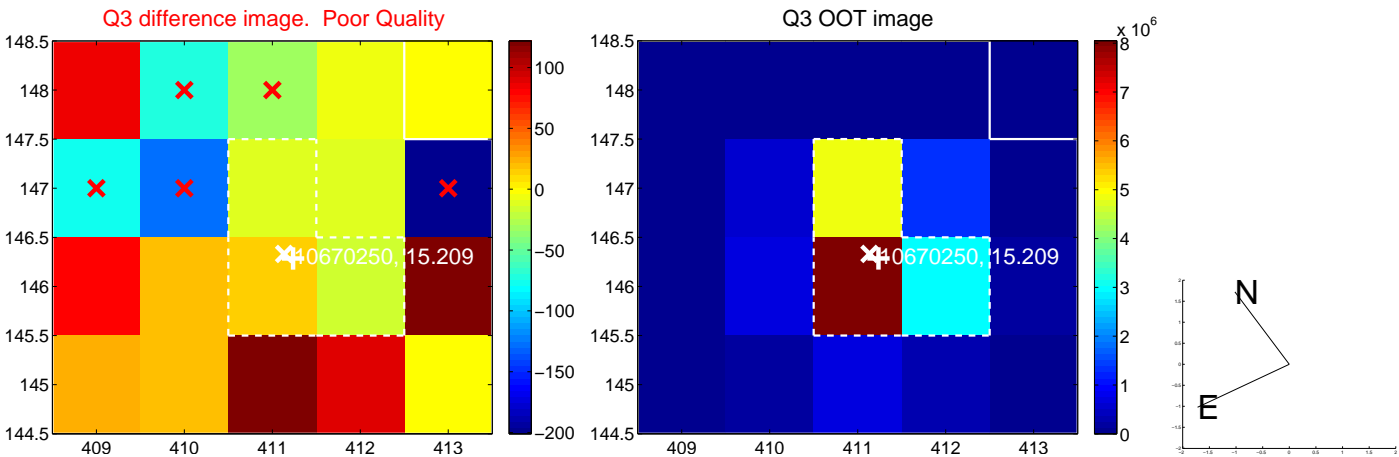
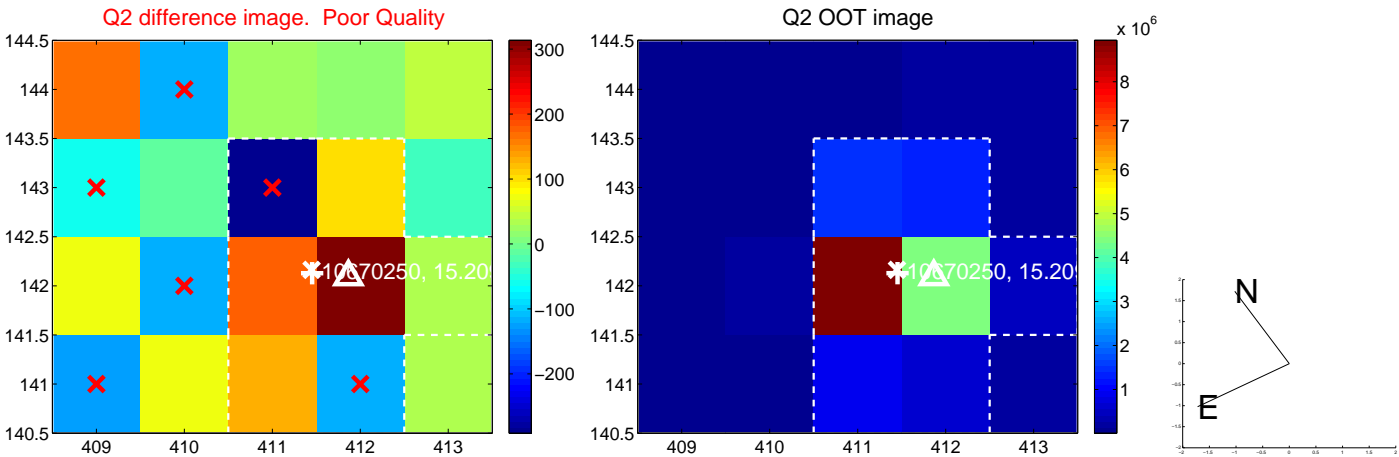
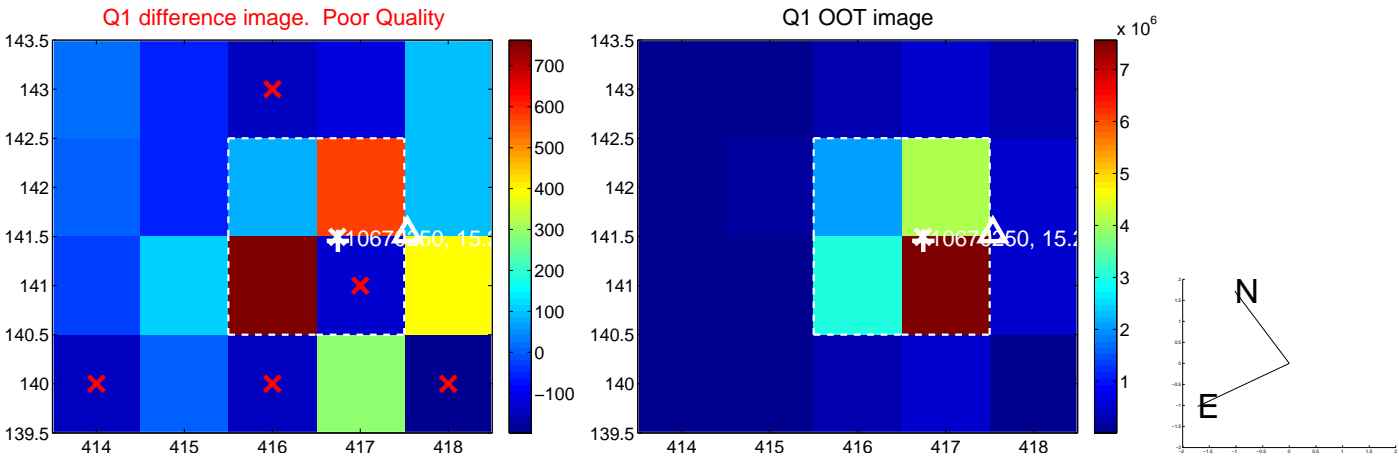
The direct PRF centroid is offset from the target star catalog position by about 0.19 arcsec

	Distance in arcsec	Distance / σ	Δ RA	Δ Dec
PRF-fit source offset from OOT	0.893 ± 0.312	2.86	-0.893 ± 0.328	0.034 ± 0.532
PRF-fit source offset from KIC position	0.960 ± 0.427	2.25	-0.949 ± 0.361	-0.146 ± 0.546
photometric centroid source offset	4.99 ± 2.07	2.40	4.65 ± 2.10	1.82 ± 1.90

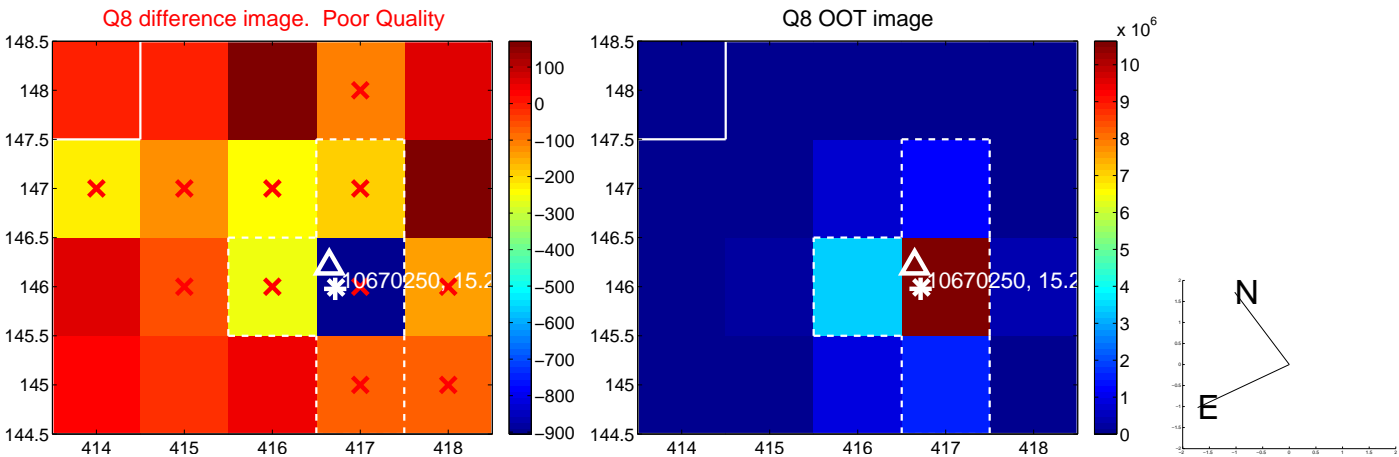
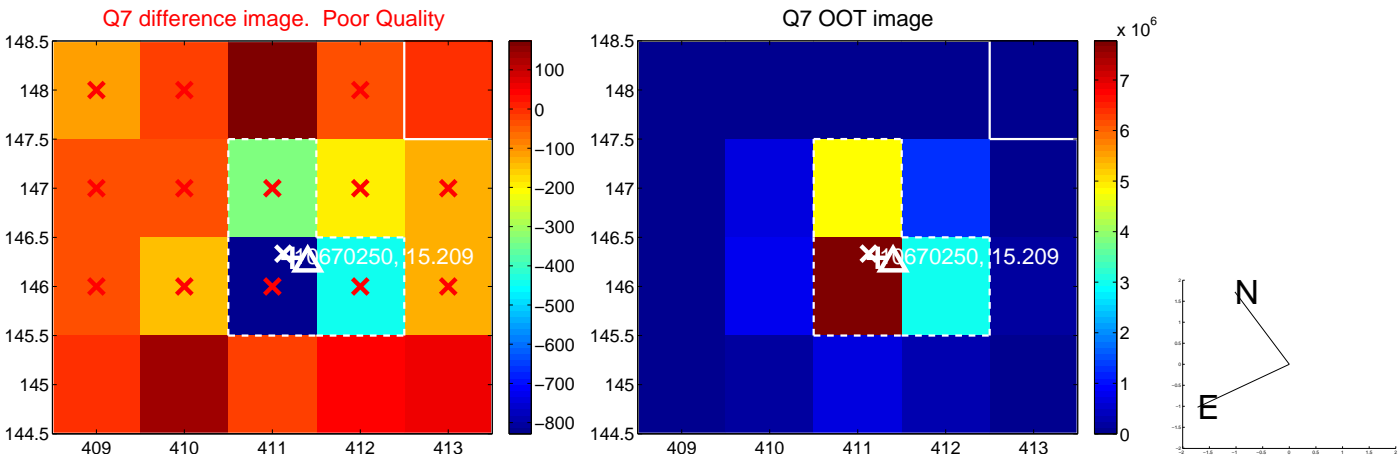
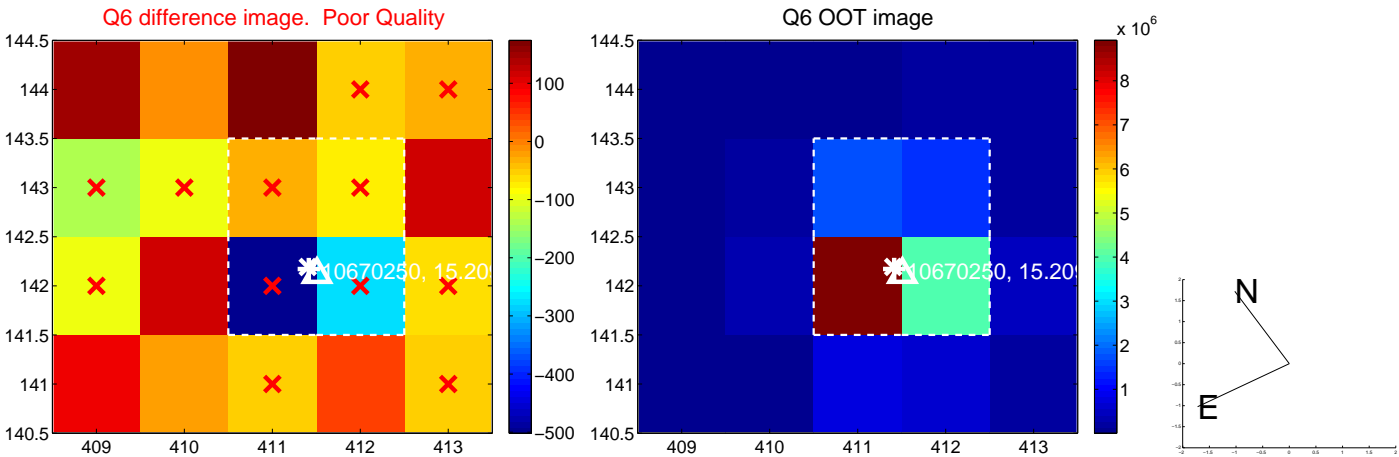
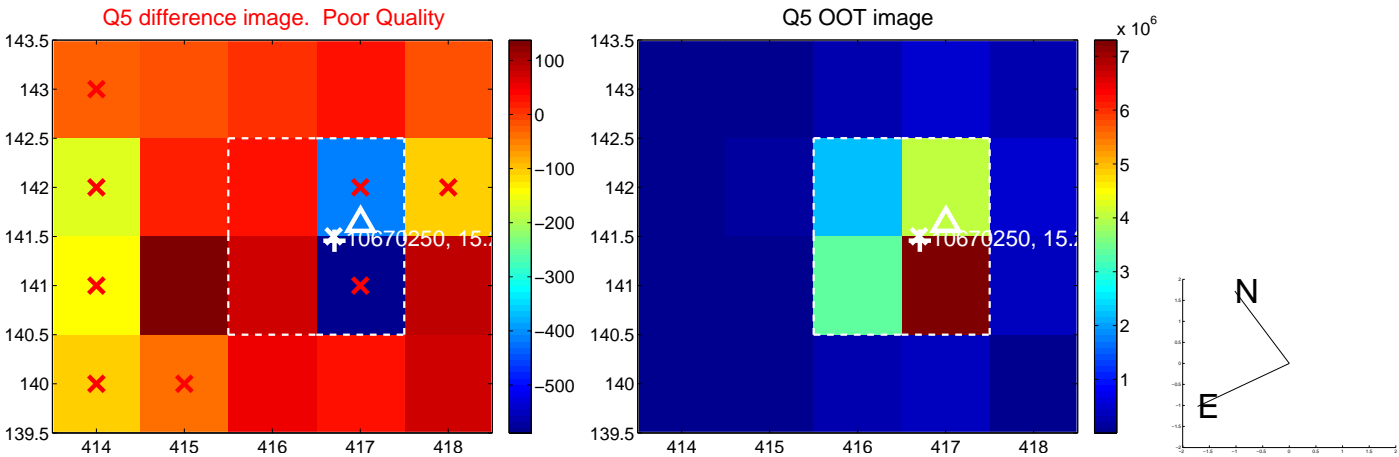


Centroid source offsets from the target star reconstructed from PRF and photometric centroids. Sky blue crosses: good quarterly centroid offsets; Vermillion crosses: bad quarterly centroid offsets; magenta cross: average over quarters. Length of the crosses: one- σ uncertainty. Blue circle: three- σ . Red *: target star. Blue *: Other stars. Text next to a star gives its KIC ID and kepmag. KIC IDs > 15,000,000 are from the UKIRT catalog.

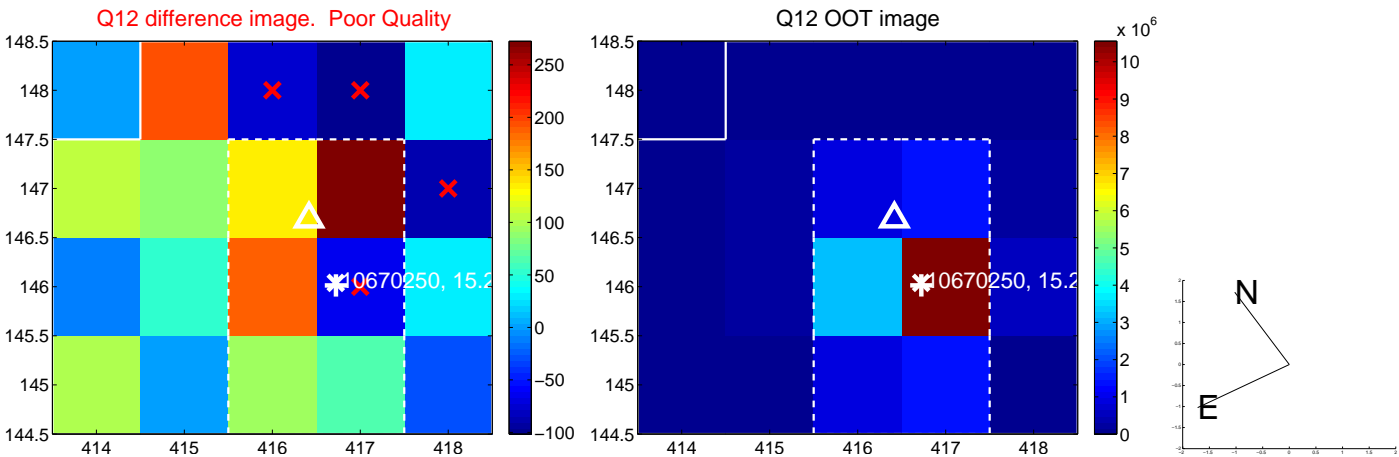
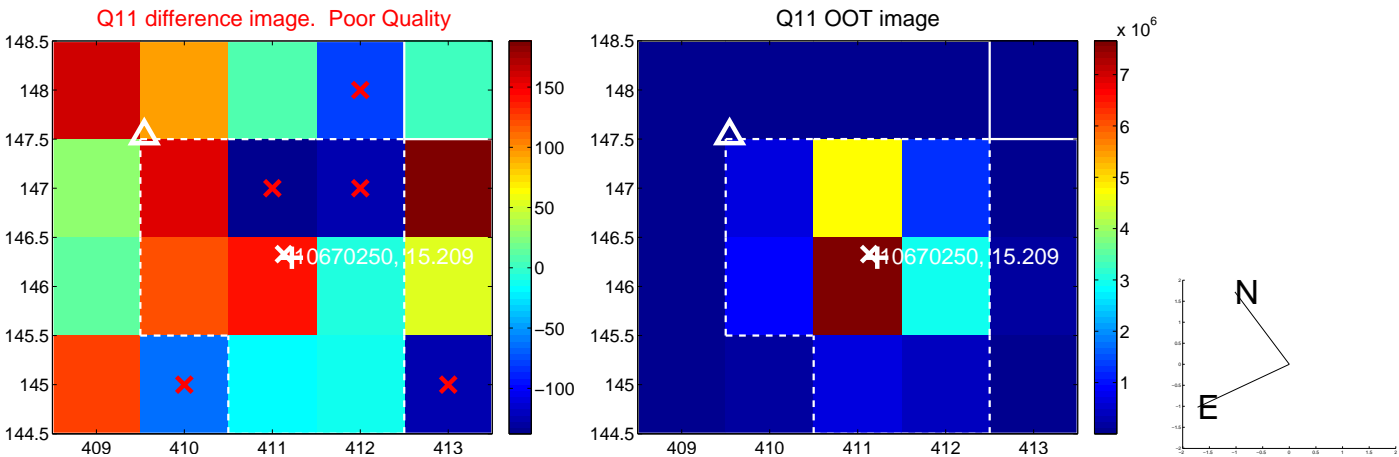
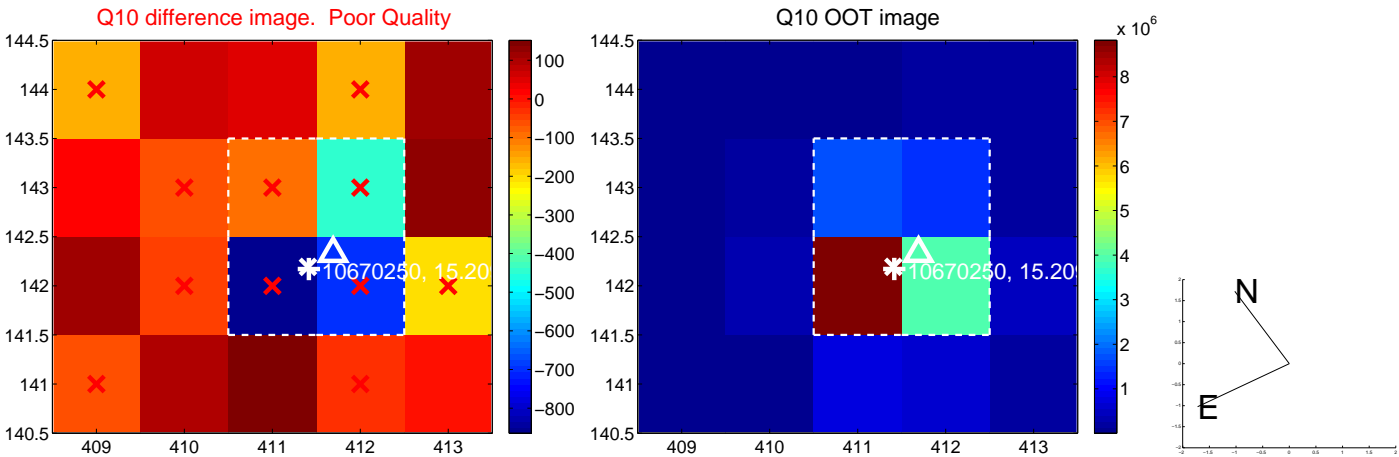
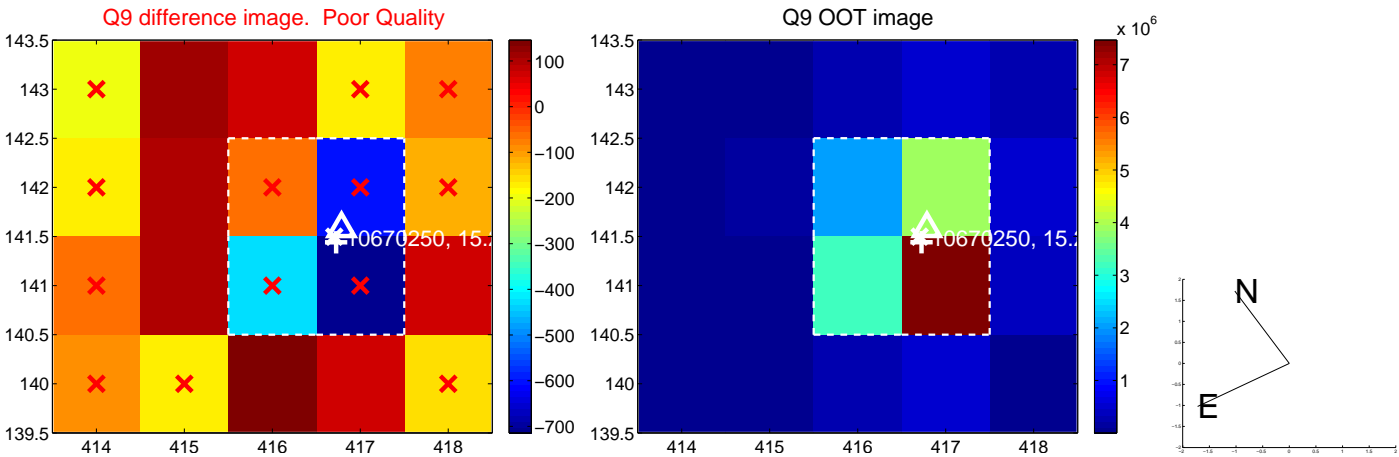
white \times : KIC target position; +: OOT centroid; \triangle : difference centroid. red \times : large negative pixel value.



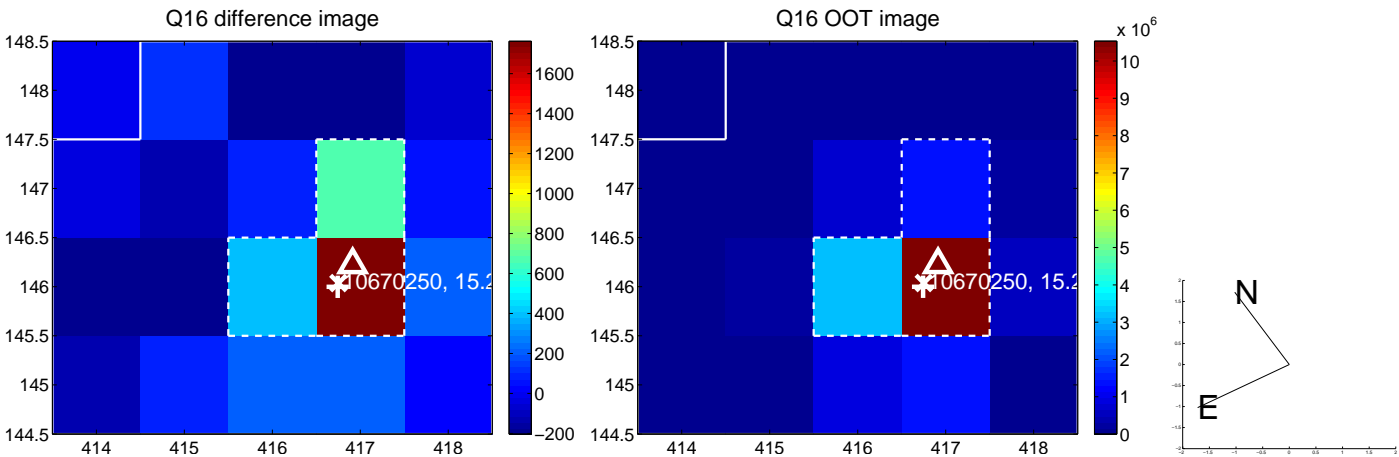
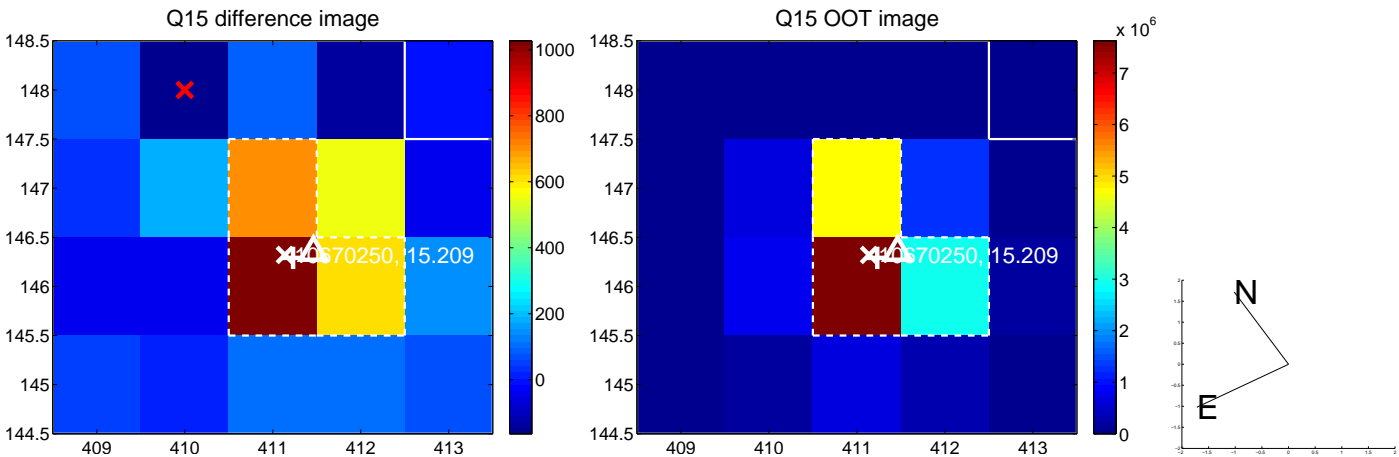
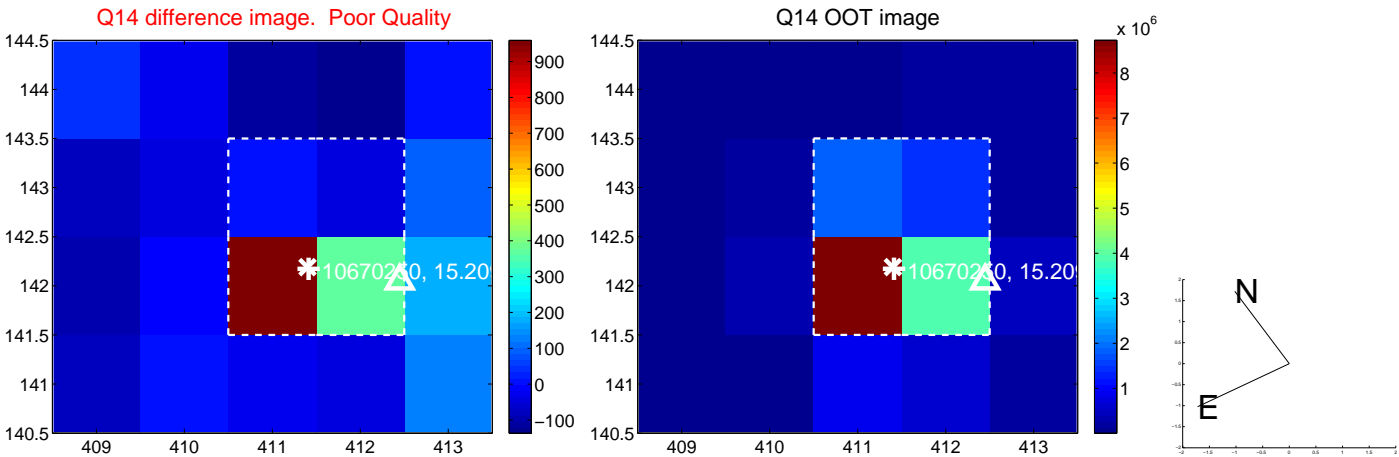
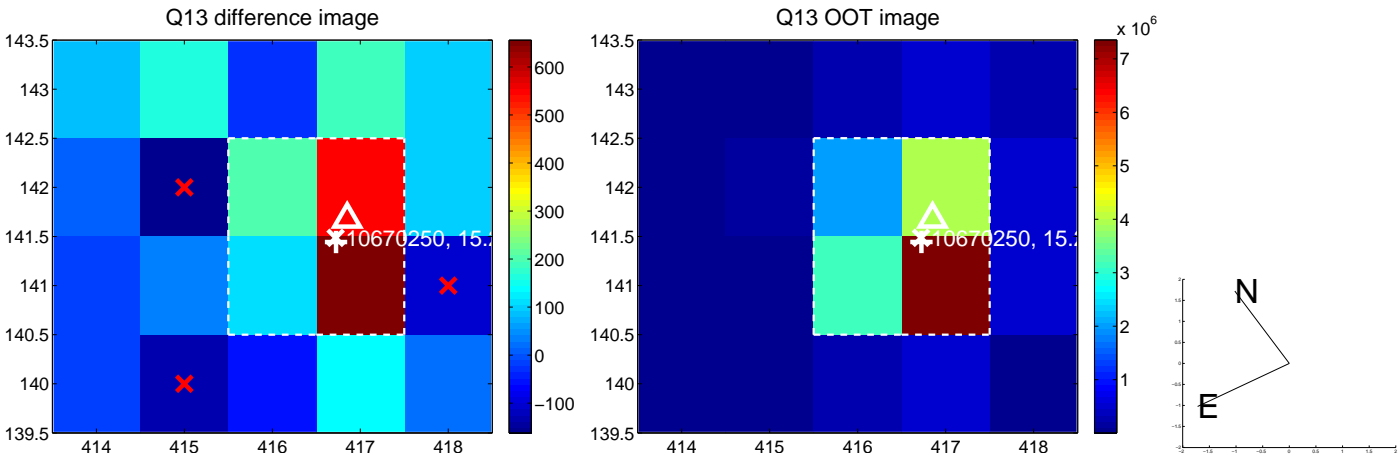
white \times : KIC target position; +: OOT centroid; \triangle : difference centroid. red \times : large negative pixel value.



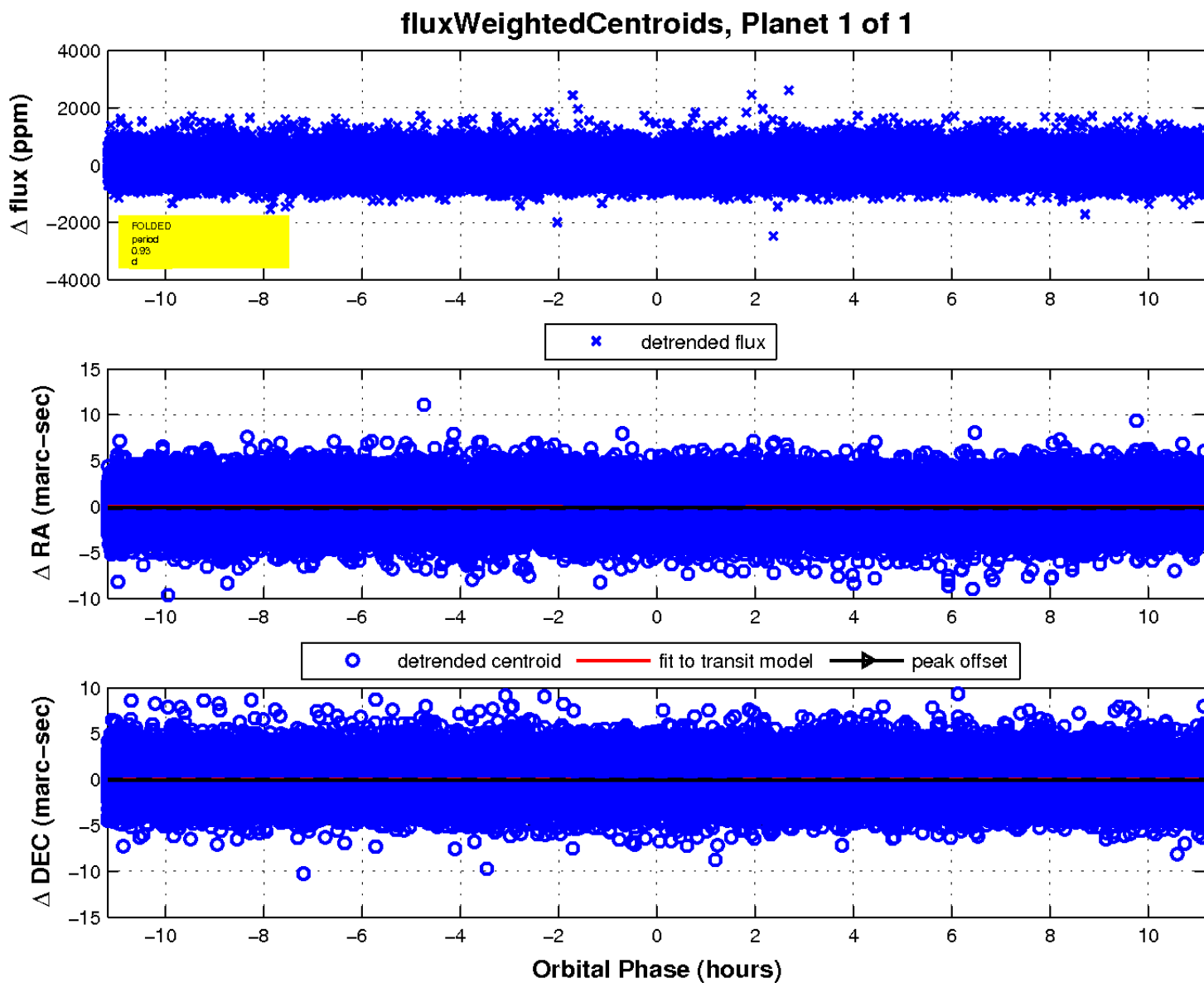
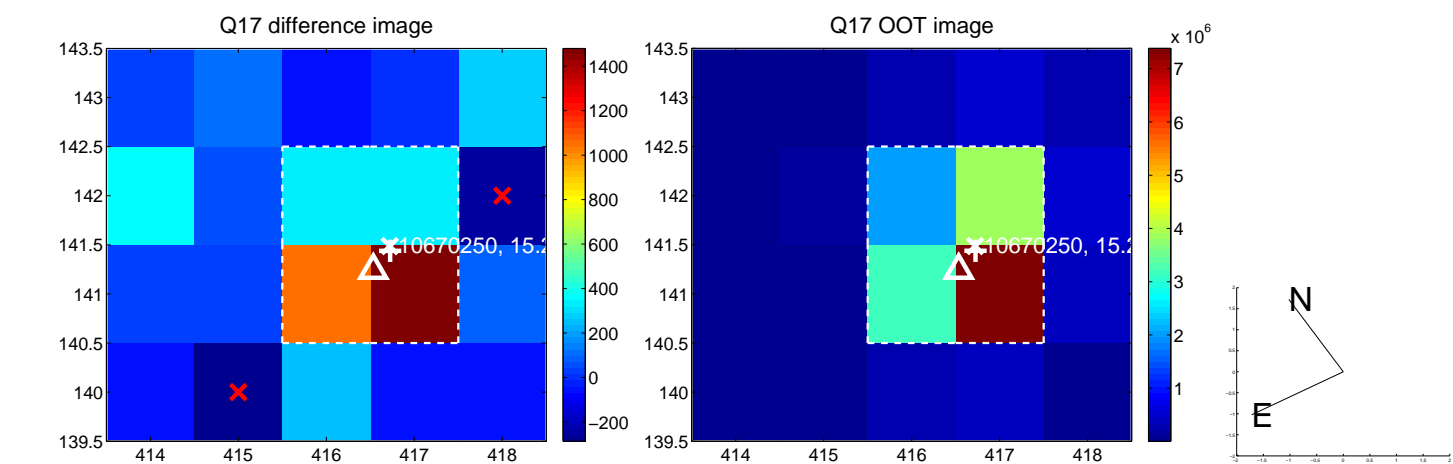
white \times : KIC target position; +: OOT centroid; \triangle : difference centroid. red \times : large negative pixel value.



white \times : KIC target position; +: OOT centroid; \triangle : difference centroid. red \times : large negative pixel value.



white \times : KIC target position; $+$: OOT centroid; \triangle : difference centroid. red \times : large negative pixel value.



UKIRT Image

Declination

