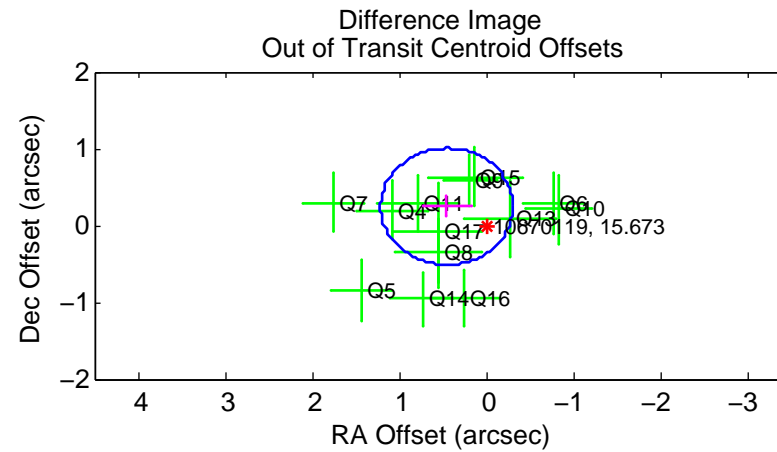
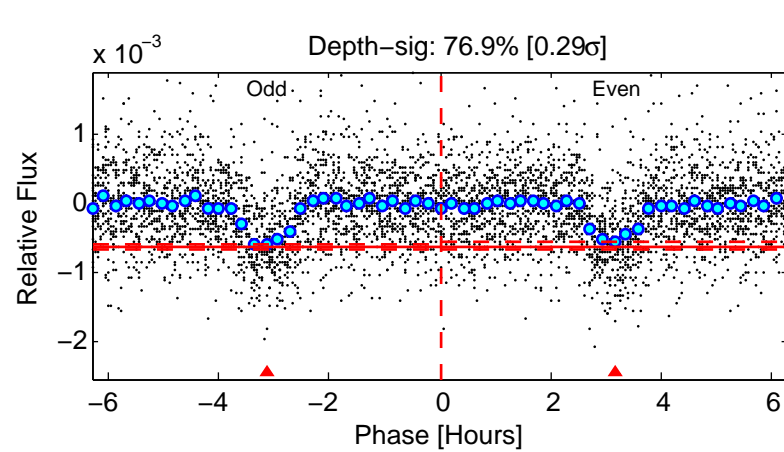
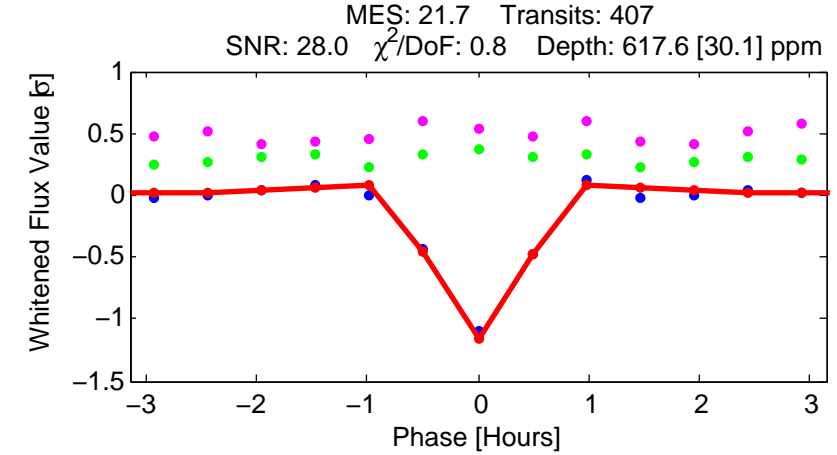
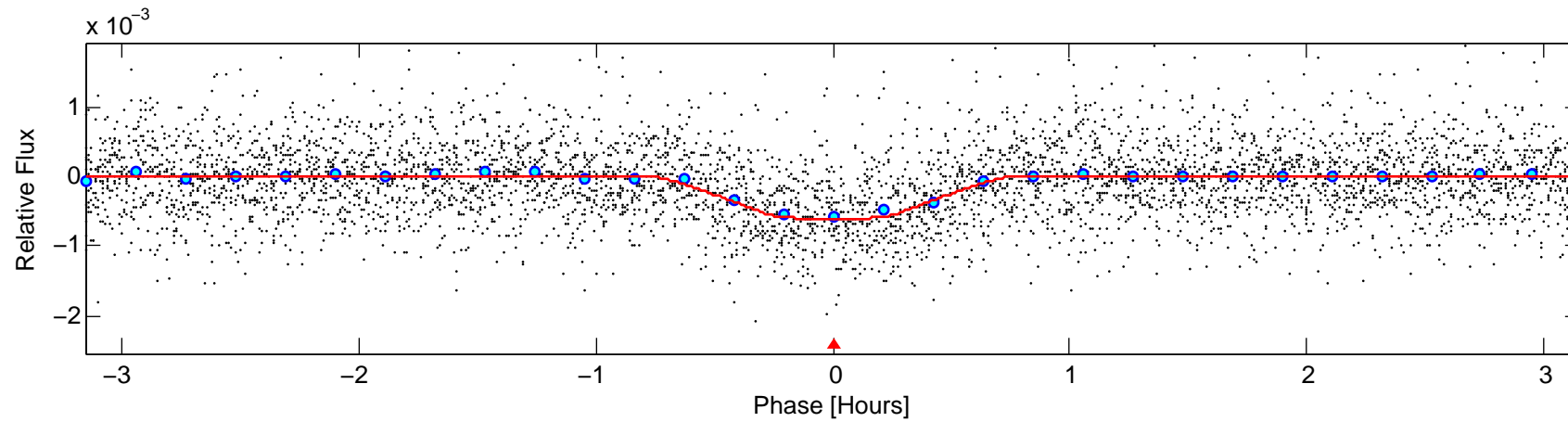
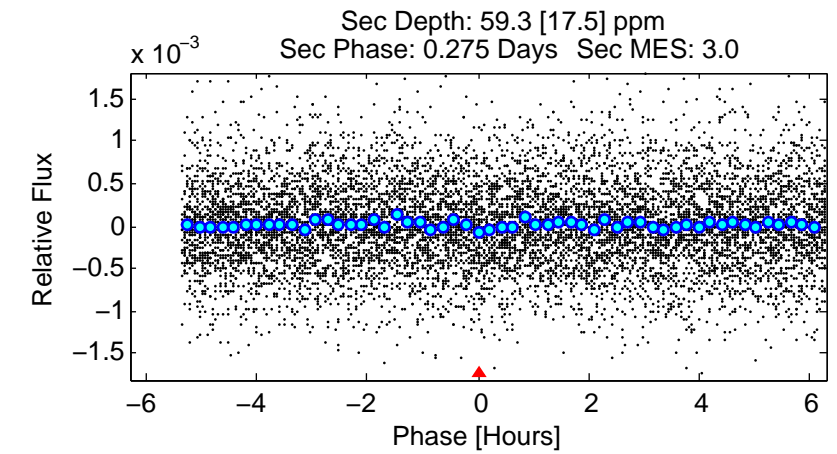
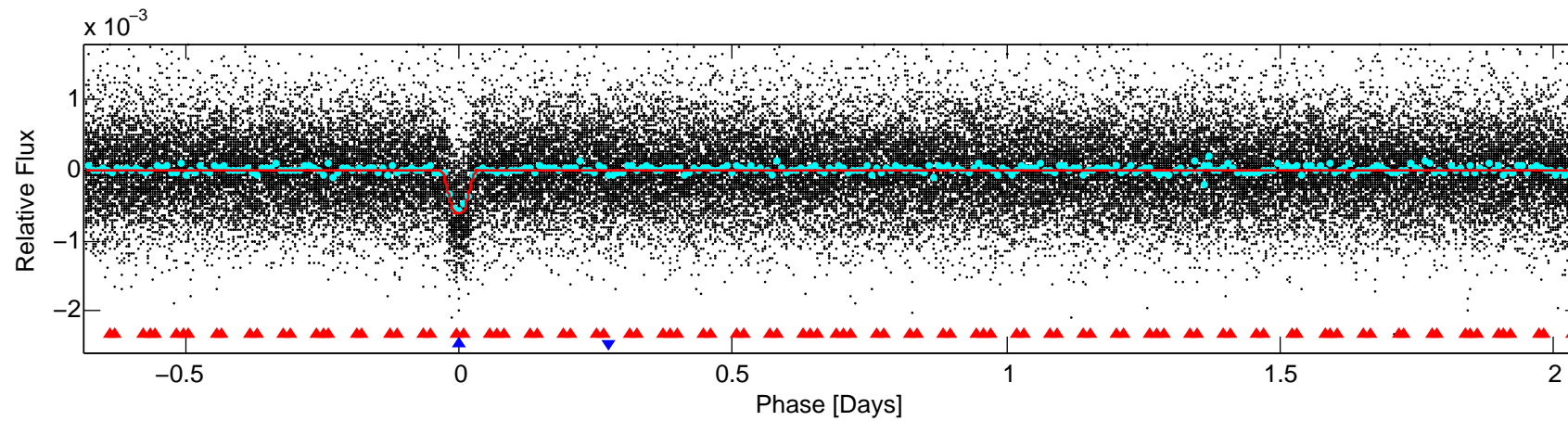
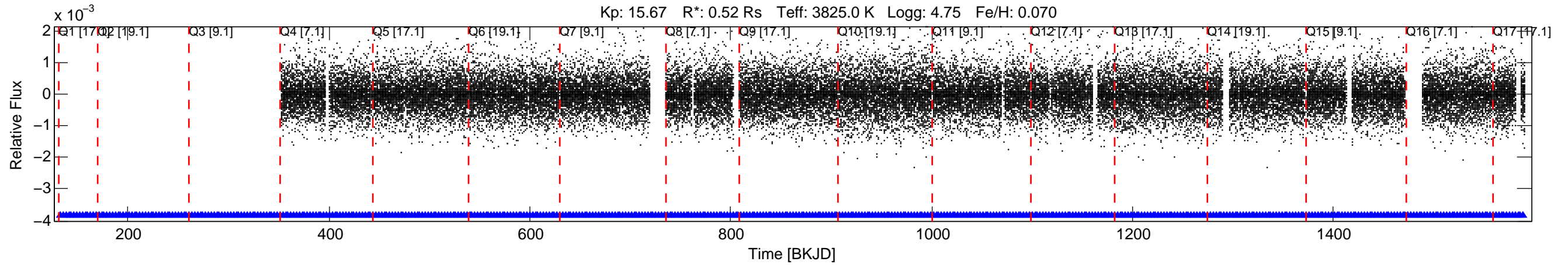


KIC: 10670119 Candidate: 2 of 2 Period: 2.733 d
 KOI: K02179.02 Name: Kepler-369b Corr: 0.951



DV Fit Results:

Period = 2.73275 [0.00000] d
 Epoch = 132.7459 [0.0007] BKJD
 Rp/R* = 0.0234 [0.0078]
 a/R* = 17.77 [23.66]
 b = 0.49 [2.06]
 Seff = 52.83 [6.39]
 Teq = 687 [21] K
 Rp = 1.34 [0.46] Re
 a = 0.0316 [0.0019] AU
 Ag = 18.24 [13.41] [1.29σ]
 Teffp = 2197 [404] K [3.73σ]

DV Diagnostic Results:

ShortPeriod-sig: N/A
 LongPeriod-sig: 100.0% [106.47σ]
 ModelChiSquare2-sig: N/A
 ModelChiSquareGof-sig: N/A
 Bootstrap-pfa: 4.94e-99
 RollingBand-fgt: 1.00 [397/397]
 GhostDiagnostic-chr: 5.288
 Centroid-sig: 0.1%
 Centroid-so: 0.990 arcsec [2.48σ]
 OotOffset-rm: 0.512 arcsec [2.03σ]
 KicOffset-rm: 0.901 arcsec [4.08σ]
 OotOffset-st: 3/3/3/4 [13]
 KicOffset-st: 3/3/3/4 [13]
 DiffImageQuality-fgm: 1.00 [13/13]
 DiffImageOverlap-fno: 1.00 [14/14]