

KIC 010459805

Q1-17 DR25 TCE Parameters

TCE	Run Type	KOI?	Period (Days)	Epoch (BKJD)	Depth (ppm)	Duration (Hours)	MES	SNR	R_{\star} (R_{\odot})	T_{\star} (K)	R_p (R_{\oplus})	S_p (S_{\oplus})
010459805-01	OBS	8290.01	461.140173	187.088581	460.2	12.964	7.5	7.5	0.64	4988	1.46	0.21

Robovetter Results

TCE	Run Type	Disp	Score	N	S	C	E	Comments
010459805-01	OBS	FP	0.12	1	0	0	0	INDIV_TRANS_CHASES_MARSHALL—CENT_FEW_DIFFS

Notes: OBS = Observed. INJ = Injected. INV = Inverted. SCR = Scrambled.

N = Not Transit-Like. S = Stellar Eclipse. C = Centroid Offset. E = Ephemeris Match.

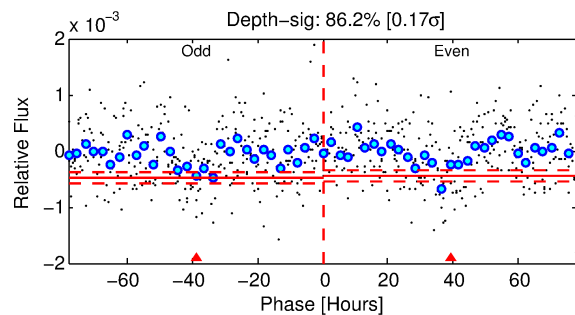
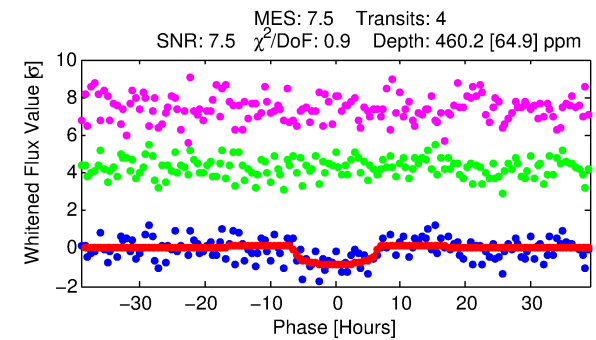
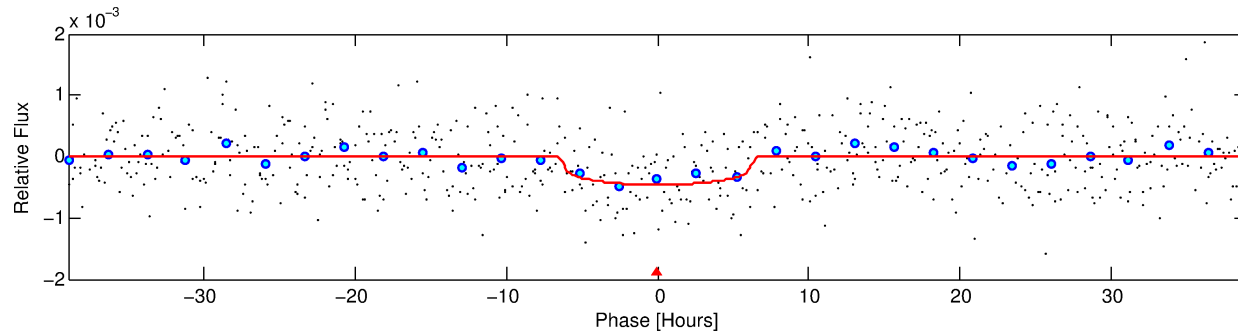
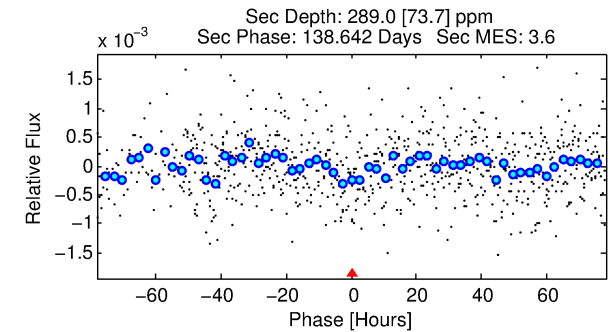
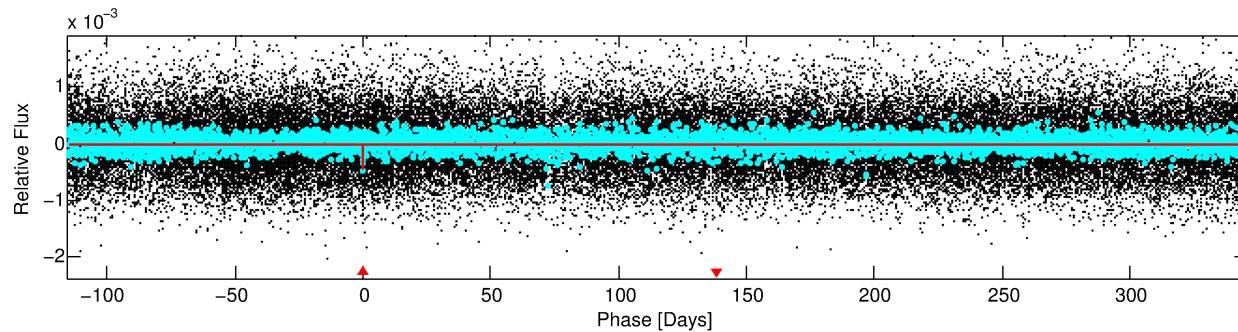
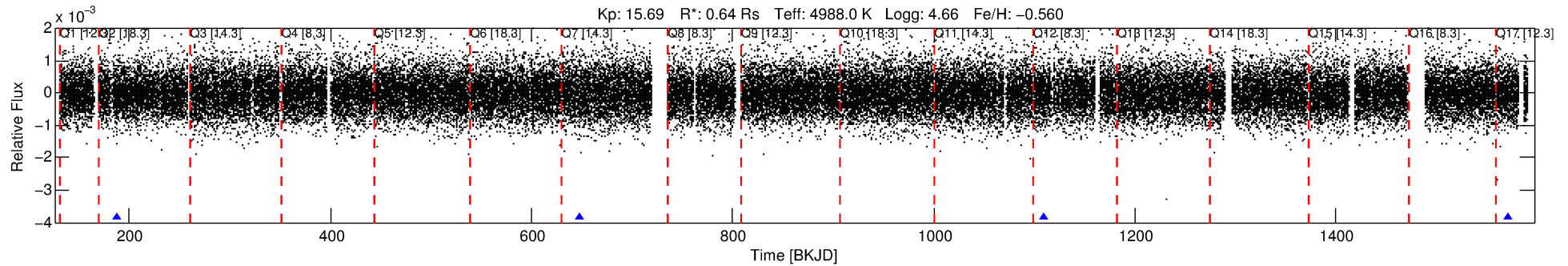
See http://exoplanetarchive.ipac.caltech.edu/docs/API_kepcandidate_columns.html#proj_disp_col for comment definitions.

Ephemeris Match Information For 010459805-01

No Significant Match Found

DV One-Page Summary

KIC: 10459805 Candidate: 1 of 1 Period: 461.140 d



DV Fit Results:

Period = 461.14017 [0.01396] d
Epoch = 187.0886 [0.0266] BKJD
Rp/R* = 0.0210 [0.0157]
a/R* = 200.31 [557.33]
b = 0.71 [2.00]
Seff = 0.21 [0.04]
Teq = 173 [7] K
Rp = 1.46 [1.10] Re
a = 1.0270 [0.0902] AU
Ag = 78951.69 [119856.67] [0.66σ]
Teffp = 4488 [1703] K [2.53σ]

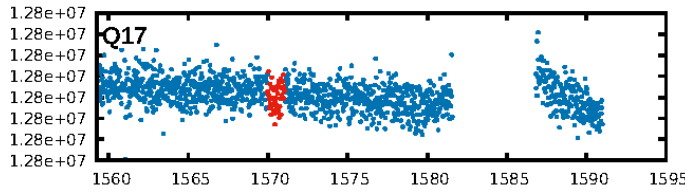
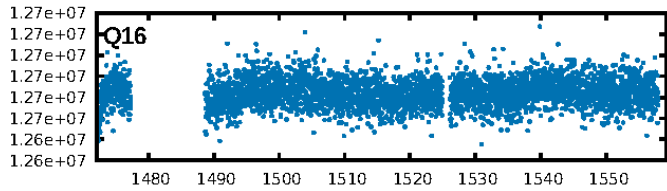
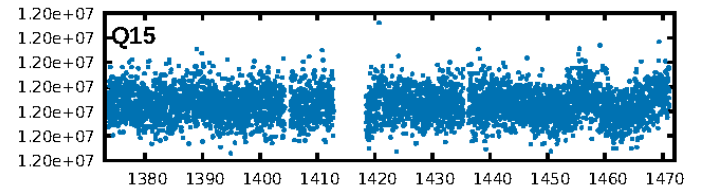
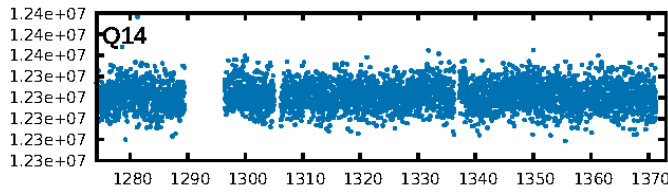
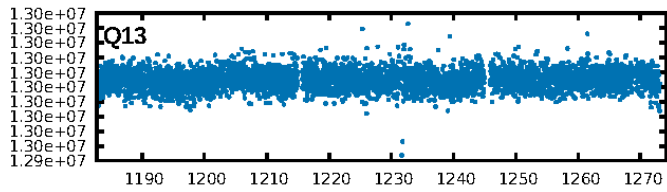
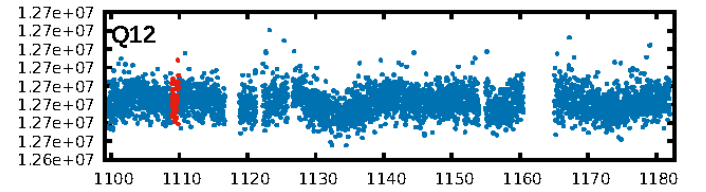
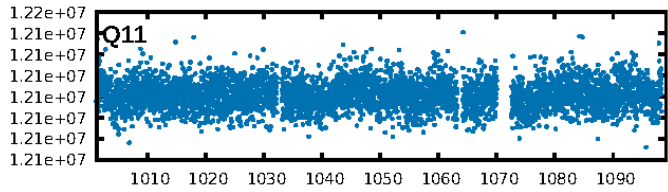
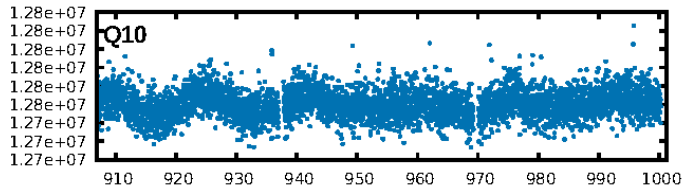
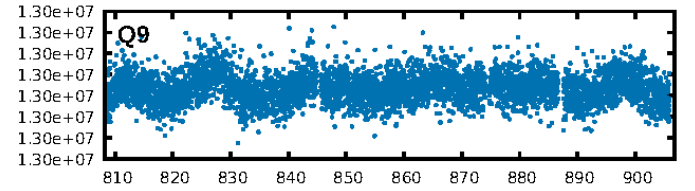
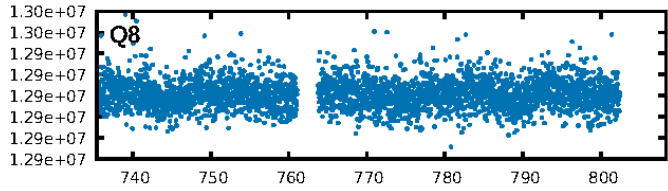
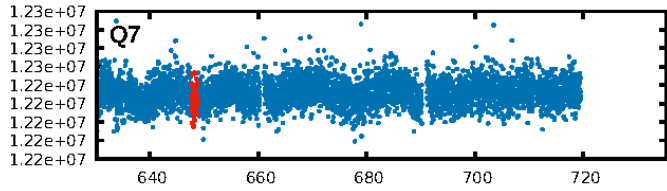
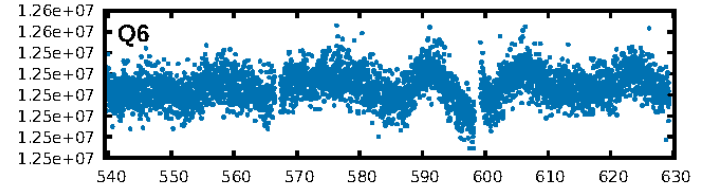
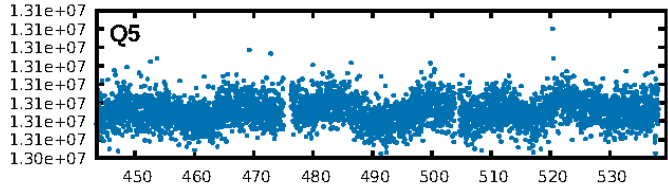
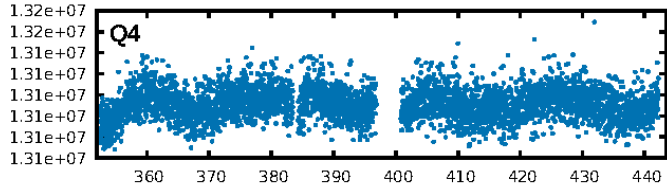
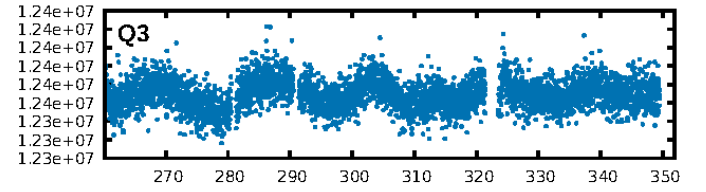
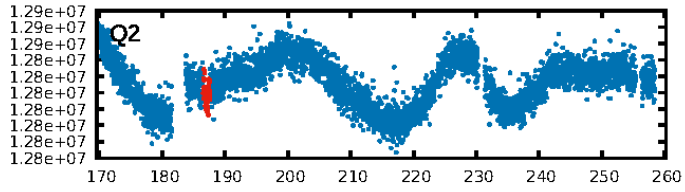
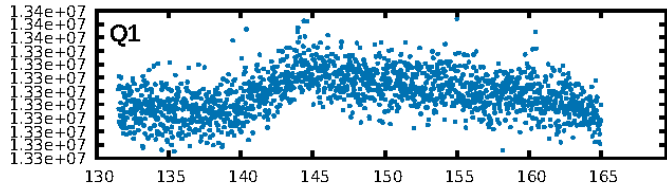
DV Diagnostic Results:

ShortPeriod-sig: N/A
LongPeriod-sig: N/A
ModelChiSquare2-sig: 40.5%
ModelChiSquareGof-sig: 99.8%
Bootstrap-pfa: 1.01e-14
RollingBand-fgt: 1.00 [3/3]
GhostDiagnostic-chr: -2.396
Centroid-sig: 4.1%
Centroid-so: 3.273 arcsec [1.66σ]
OotOffset-rm: N/A
KicOffset-rm: N/A
OotOffset-st: 0/0/0/0 [0]
KicOffset-st: 0/0/0/0 [0]
DiffImageQuality-fgm: N/A
DiffImageOverlap-fno: 1.00 [4/4]

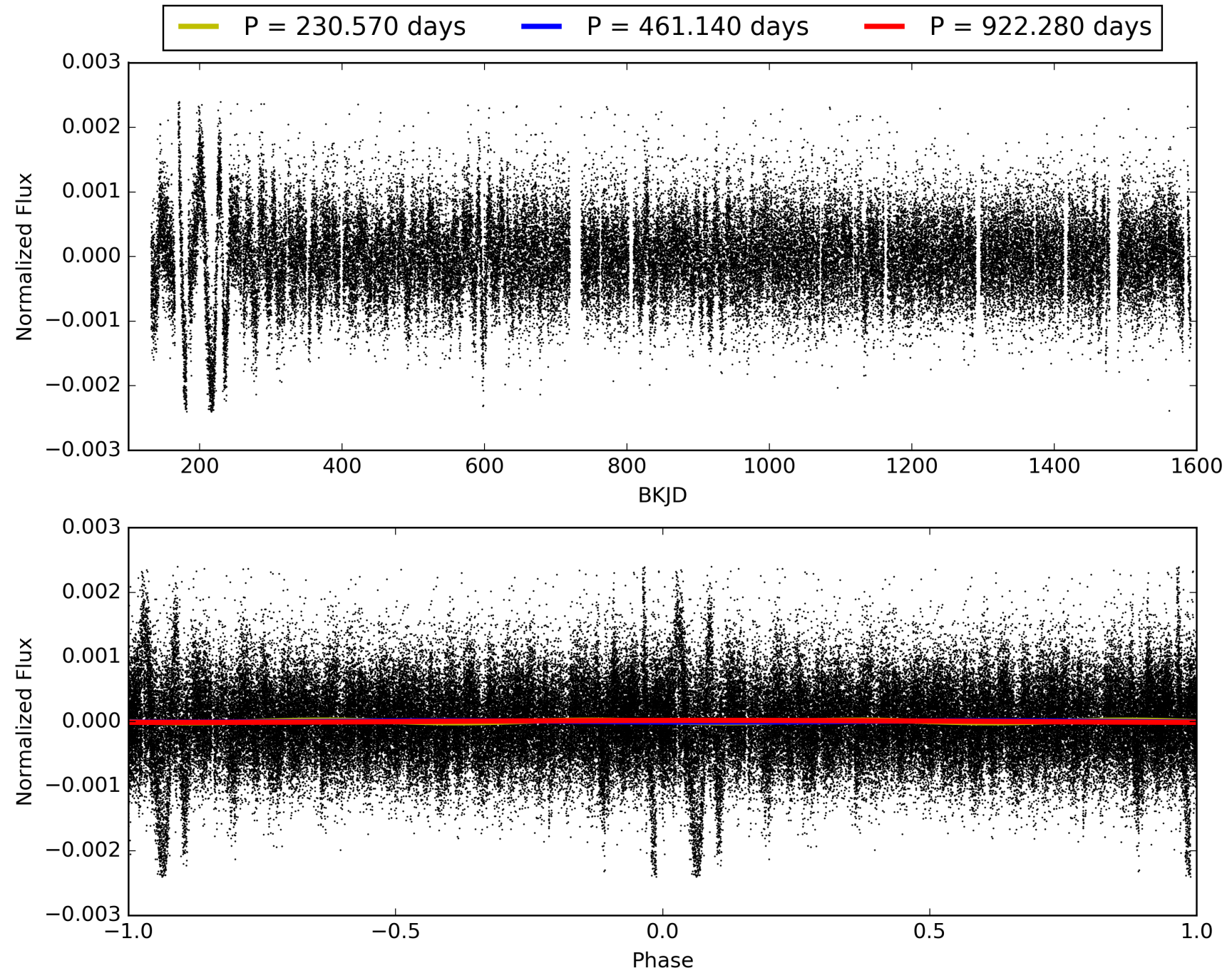
Software Revision: svn+ssh://murzim/repo/soc/tags/release/9.3.42@60958 -- Date Generated: 28-Jan-2016 21:40:44 Z

This Data Validation Report Summary was produced in the Kepler Science Operations Center Pipeline at NASA Ames Research Center

TCE 010459805-01, PDC Light Curves

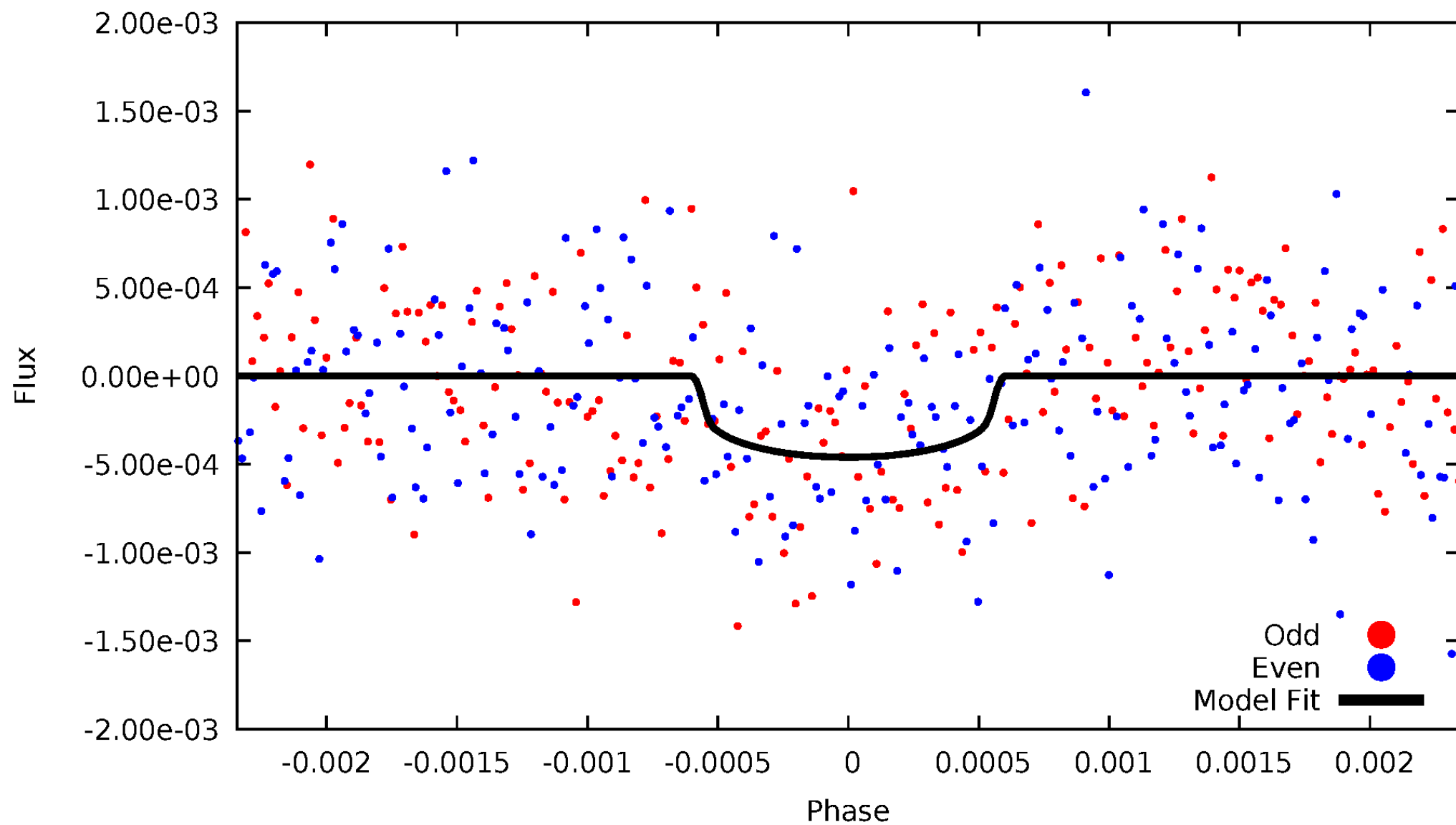


TCE 010459805-01



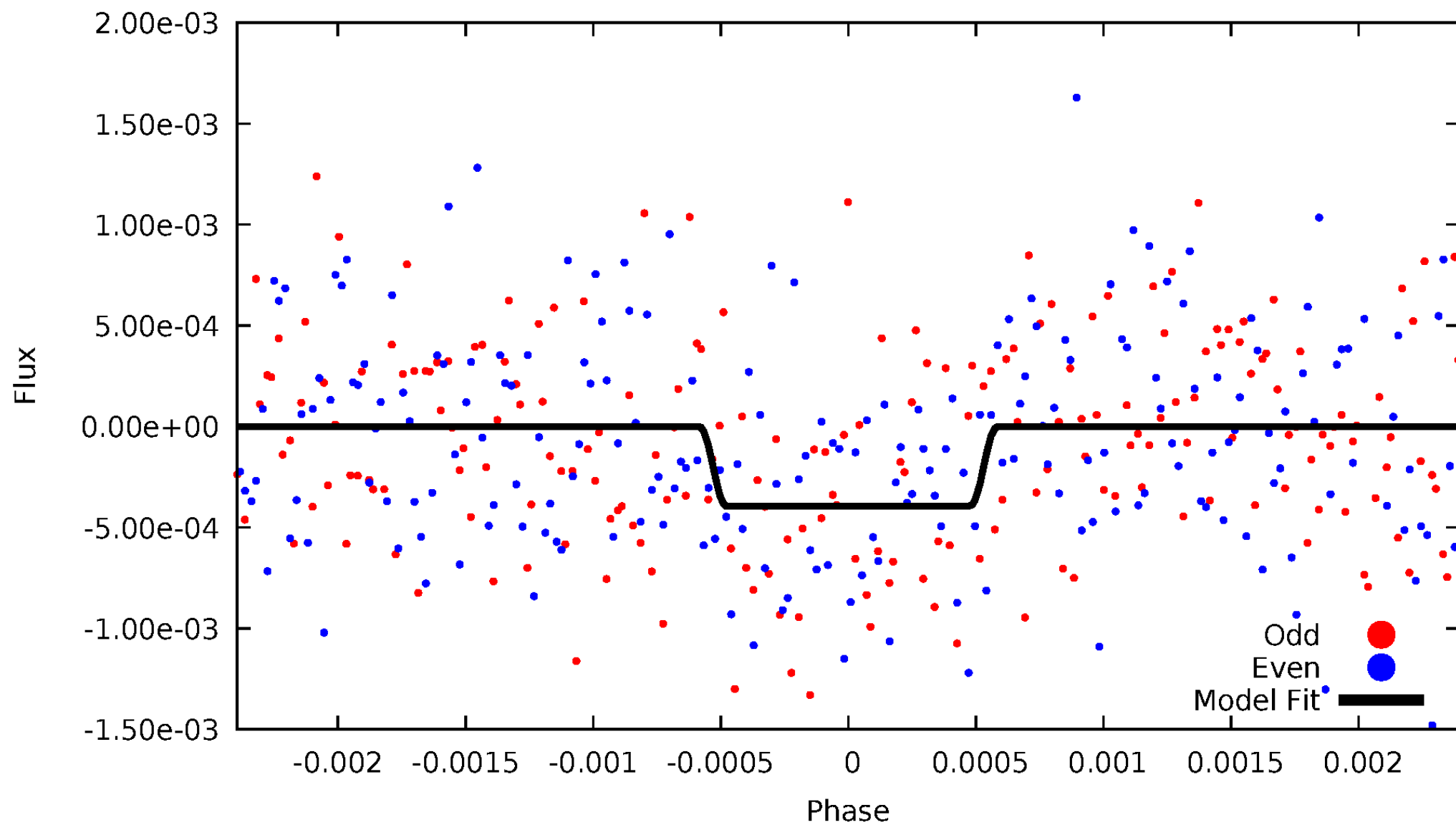
DV Odd/Even

TCE 010459805-01

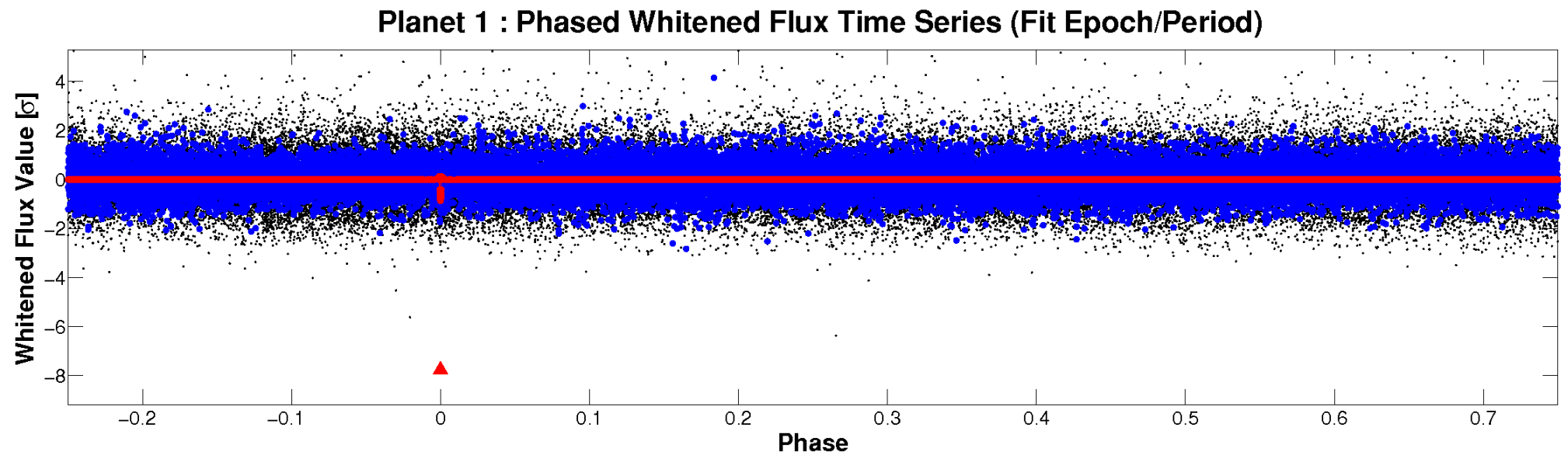
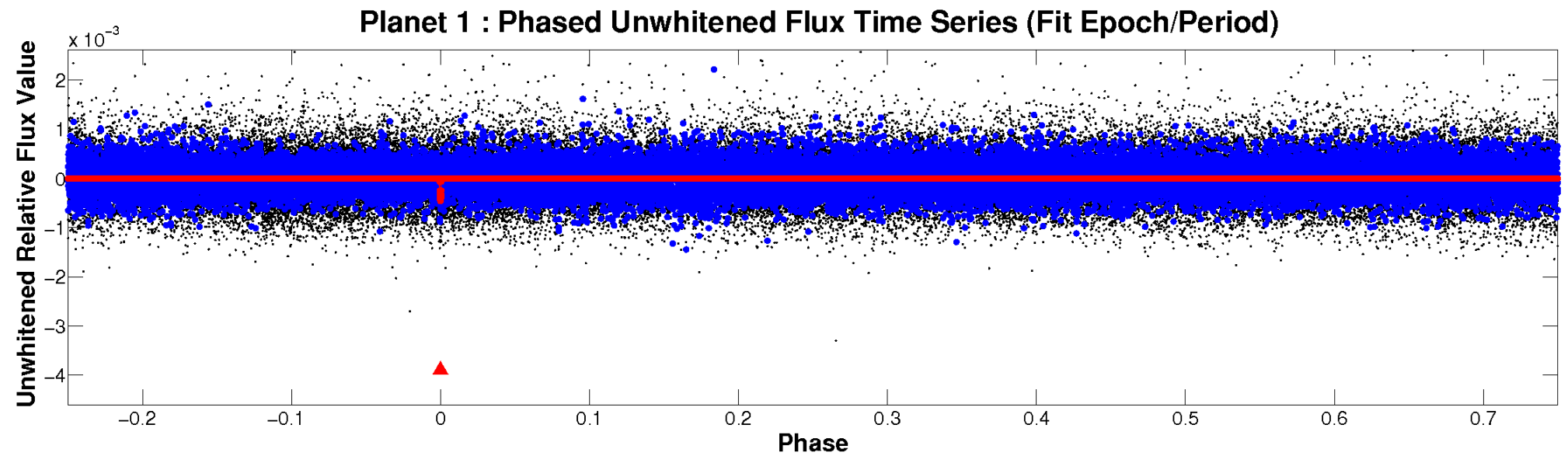


ALT Odd/Even

TCE 010459805-01

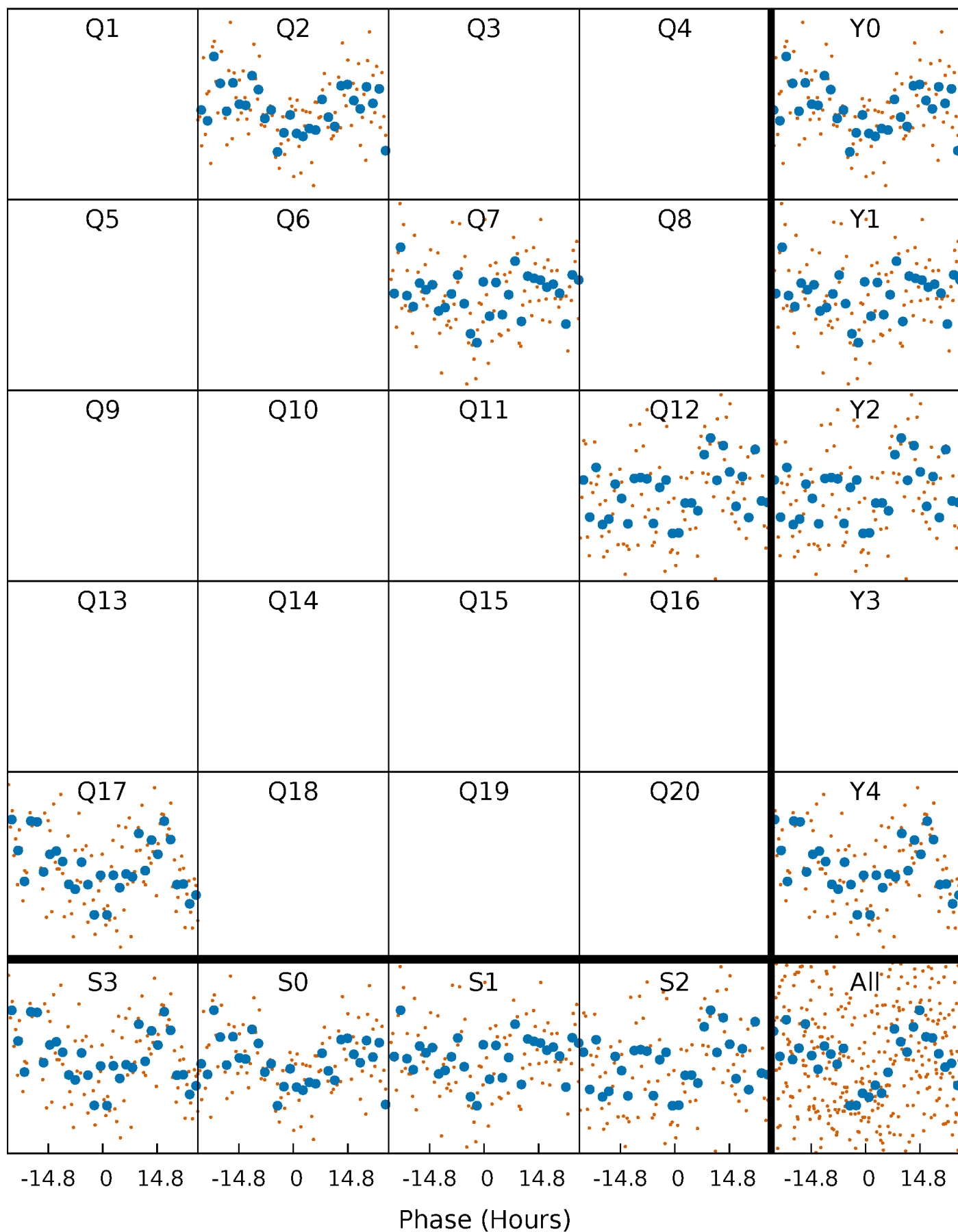


Non-Whitened Vs. Whitened Light Curve



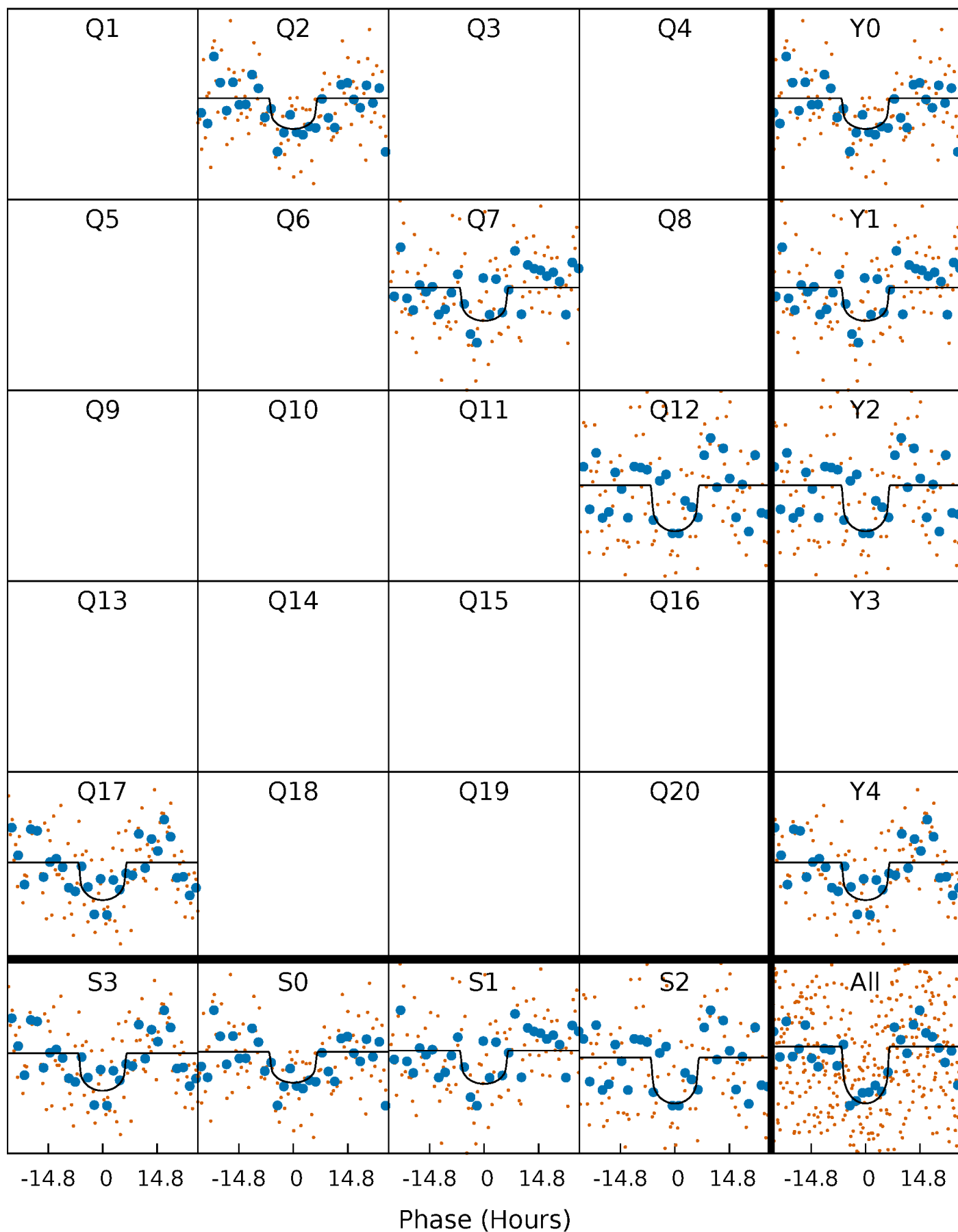
PDC Quarter-Phased Transit Curves

TCE 010459805-01 P=461.140173 Days $T_0=187.088581$ (BKJD)



DV Quarter-Phased Transit Curves

TCE 010459805-01 P=461.140173 Days $T_0=187.088581$ (BKJD)



Alt. Detrend Quarter-Phased Transit Curves

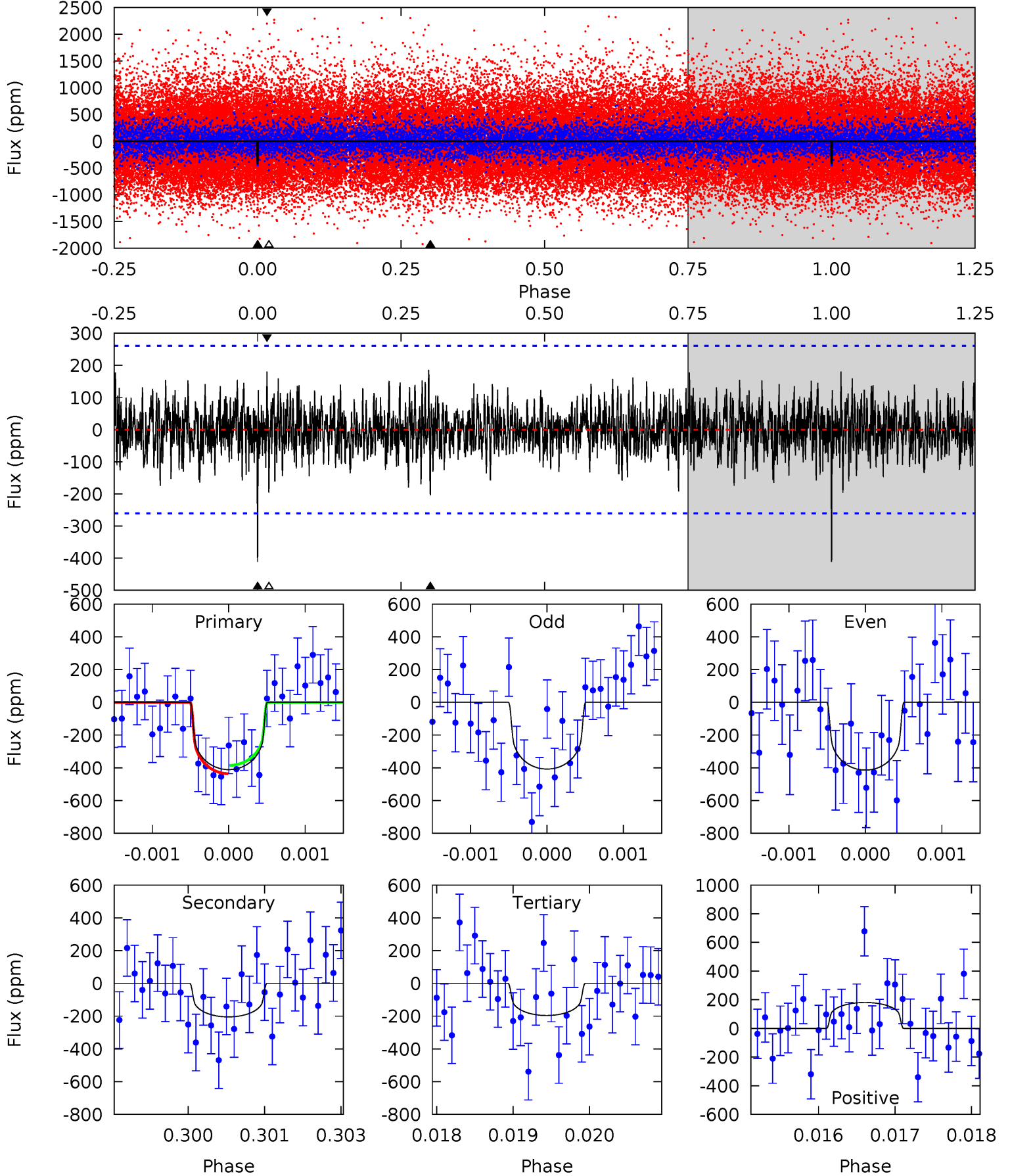
TCE 010459805-01 P=461.137771 Days $T_0=187.100545$ (BKJD)



DV Model-Shift Uniqueness Test

010459805-01, P = 461.140173 Days, E = 187.088581 Days

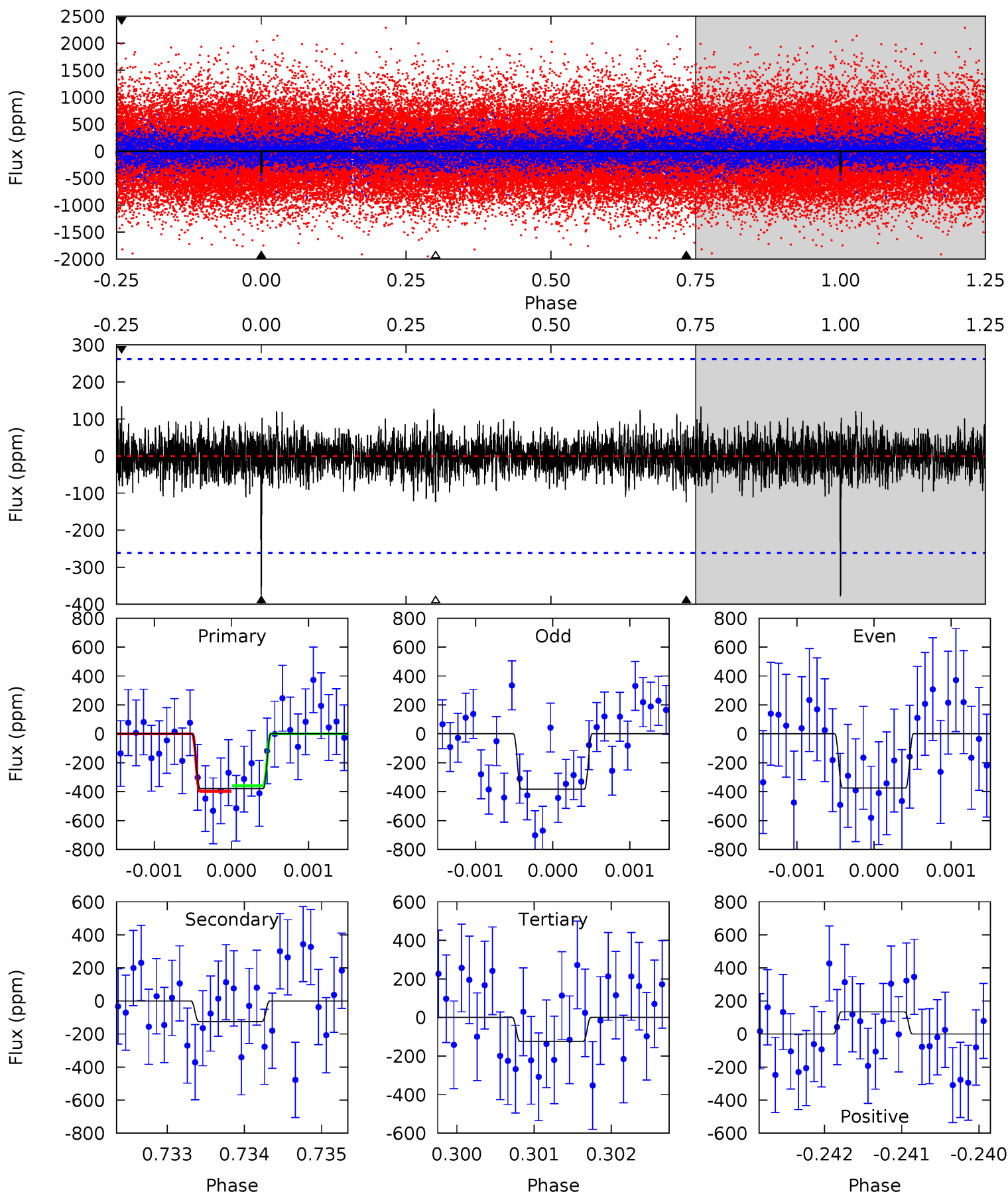
Pri	Sec	Ter	Pos	FA ₁	FA ₂	F _{Red}	Pri-Ter	Pri-Pos	Sec-Ter	Sec-Pos	Odd-Evn	DMM	Shape	TAT
8.54	4.25	4.07	3.76	5.42	3.24	1.14	4.46	4.78	0.18	0.50	0.06	1.01	0.31	0.53



Alt Model-Shift Uniqueness Test

010459805-01, P = 461.137771 Days, E = 187.100545 Days

Pri	Sec	Ter	Pos	FA ₁	FA ₂	F _{Red}	Pri-Ter	Pri-Pos	Sec-Ter	Sec-Pos	Odd-Evn	DMM	Shape	TAT
7.84	2.58	2.56	2.78	5.43	3.25	0.71	5.28	5.05	0.02	-0.21	0.08	0.99	0.26	0.40



Stellar Parameters For KIC 010459805

	$T_{\text{eff}}(K)$	$\log(g)$	[Fe/H]	$R (R_{\odot})$	$M(M_{\odot})$	$p_{\star} (\text{g}\cdot\text{cm}^{-3})$
	4988^{+149}_{-134}	$4.663^{+0.032}_{-0.063}$	$-0.560^{+0.300}_{-0.300}$	$0.636^{+0.070}_{-0.045}$	$0.678^{+0.065}_{-0.053}$	$3.718^{+0.544}_{-0.775}$
	+3%/-3%	+1%/-1%	+54%/-54%	+11%/-7%	+10%/-8%	+15%/-21%
Source	PHO1	KIC0	KIC0	DSEP		

KIC = Kepler Input Catalog; PHO = Photometry; SPE = Spectroscopy; AST = Asteroseismology
 TRA = Transits; DESP = Dartmouth Models; MULT = Multiple Models

Secondary Eclipse Parameters for KIC 010459805-01 / KOI 8290.01

Detrend	Depth (ppm)	$R_p (R_{\oplus})$	$T_{max} (K)$	$T_{obs} (K)$	A_{obs}
DV	-205 ± 48	$1.60^{+0.98}_{-0.95}$	243^{+9}_{-8}	4141^{+1889}_{-631}	$44533^{+225536}_{-27733}$
Alt.	-124 ± 48	$1.56^{+0.99}_{-0.99}$	244^{+9}_{-8}	3859^{+1758}_{-644}	$29653^{+171039}_{-20067}$

T_{max} = Theoretical Maximum Planetary Temperature

T_{obs} = Observed Planetary Temperature (Assuming $A=0.3$)

A_{obs} = Observed Albedo (Assuming $T=0$)

If a secondary eclipse is present, the system is likely an EB if $T_{obs} \gg T_{max}$ AND $A_{obs} \gg 1.0$

DV Centroid Data

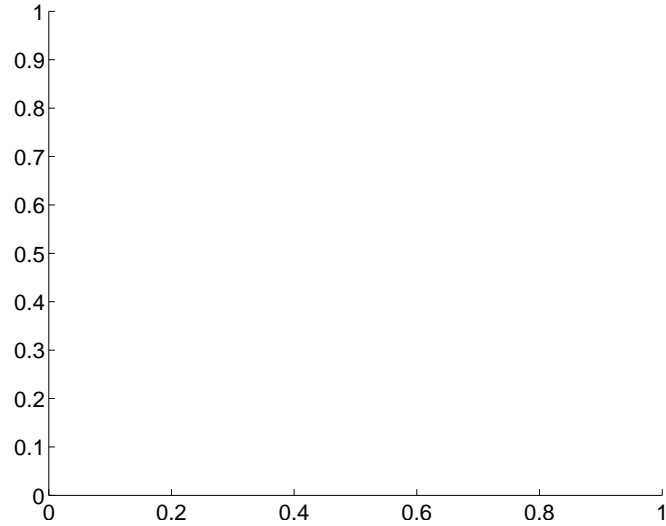
Supplemental centroid analysis for 010459805-01. Kepler magnitude: 15.69. Transit SNR 7.50

There are 0 quarters with good PRF difference image offsets

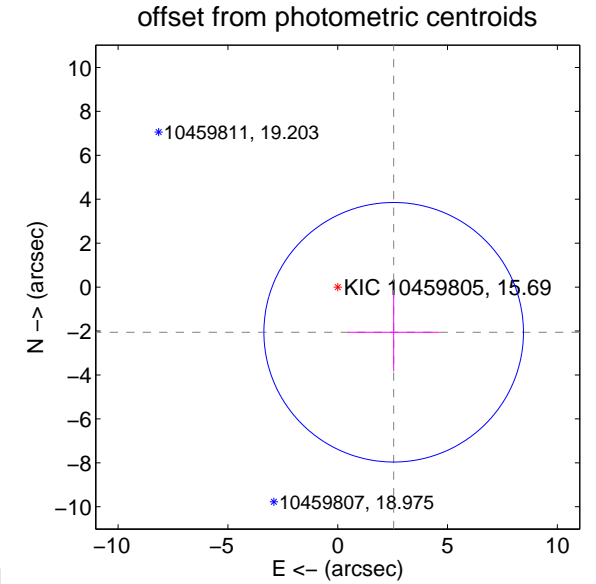
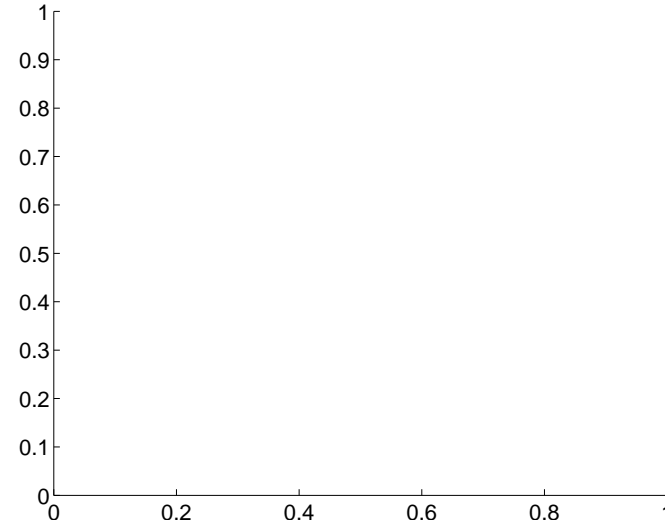
The direct PRF centroid is offset from the target star catalog position by about NaN arcsec

	Distance in arcsec	Distance / σ	Δ RA	Δ Dec
PRF-fit source offset from OOT	—	—	—	—
PRF-fit source offset from KIC position	—	—	—	—
photometric centroid source offset	3.27 ± 1.97	1.66	-2.55 ± 2.08	-2.06 ± 1.78

There is no PRF-fit offset from OOT-fit



There is no PRF-fit offset from KIC



Centroid source offsets from the target star reconstructed from PRF and photometric centroids. Sky blue crosses: good quarterly centroid offsets; Vermillion crosses: bad quarterly centroid offsets; magenta cross: average over quarters. Length of the crosses: one- σ uncertainty. Blue circle: three- σ . Red *: target star. Blue *: Other stars. Text next to a star gives its KIC ID and kepmag. KIC IDs > 15,000,000 are from the UKIRT catalog.

white \times : KIC target position; $+$: OOT centroid; \triangle : difference centroid. red \times : large negative pixel value.

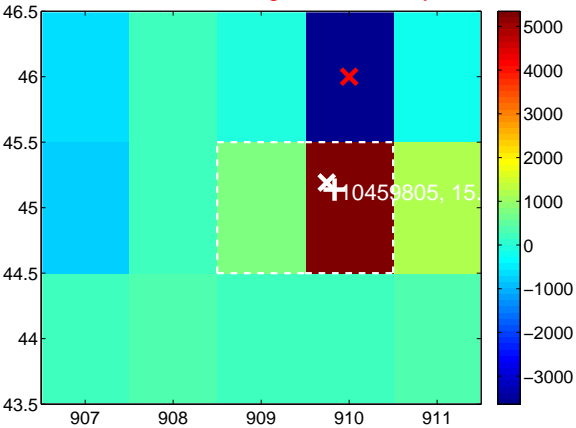
Q1 no difference image



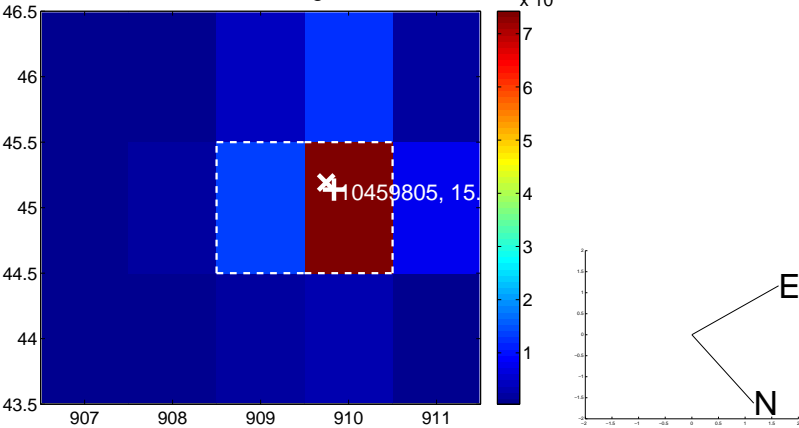
Q1 no OOT image



Q2 difference image. Poor Quality



Q2 OOT image



Q3 no difference image



Q3 no OOT image



Q4 no difference image



Q4 no OOT image



white ×: KIC target position; +: OOT centroid; △: difference centroid. red ✕: large negative pixel value.

Q5 no difference image



Q5 no OOT image



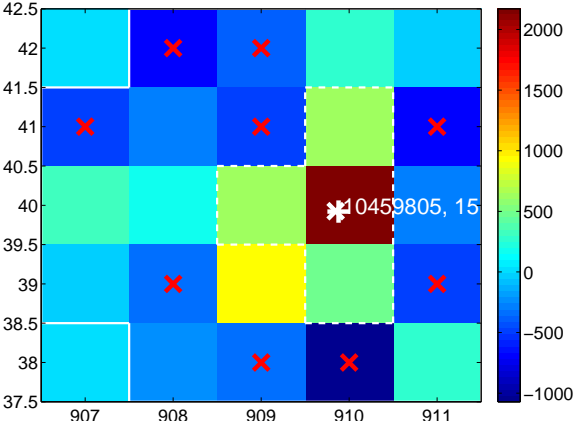
Q6 no difference image



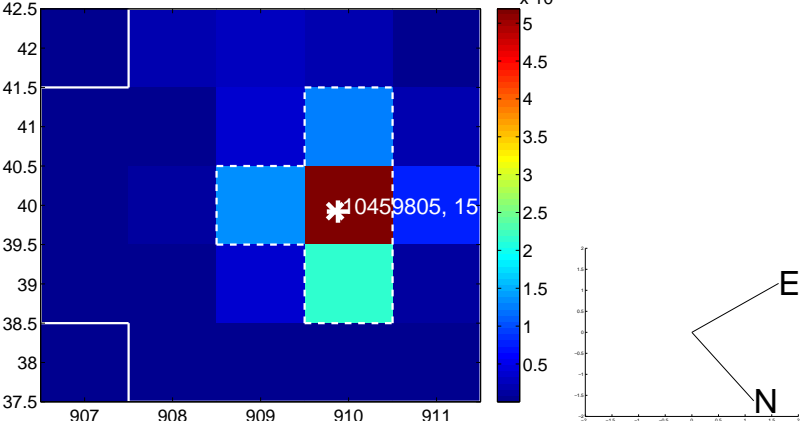
Q6 no OOT image



Q7 difference image. Poor Quality



Q7 OOT image



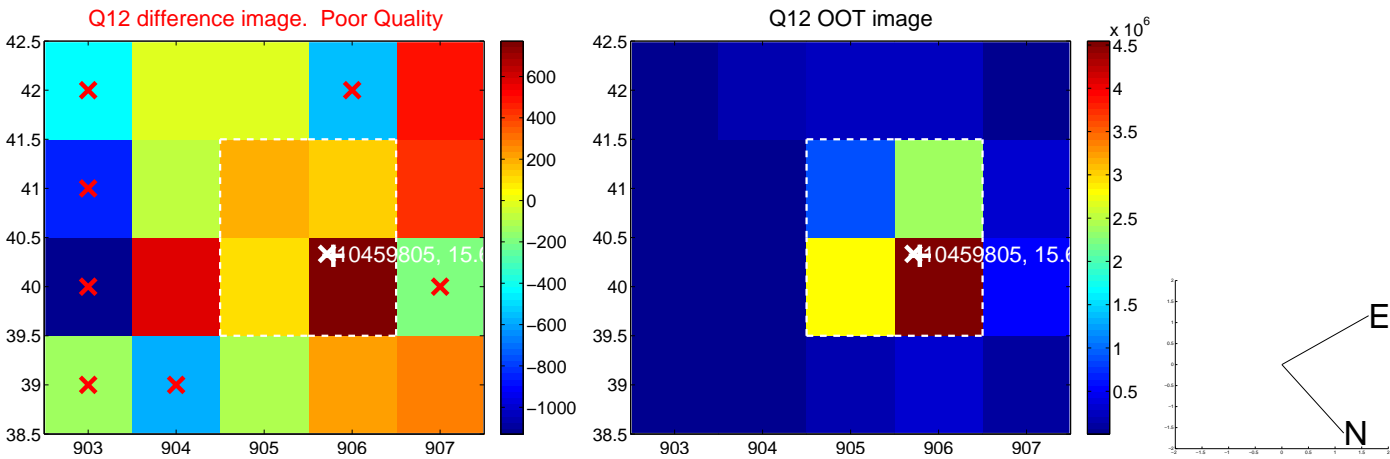
Q8 no difference image



Q8 no OOT image



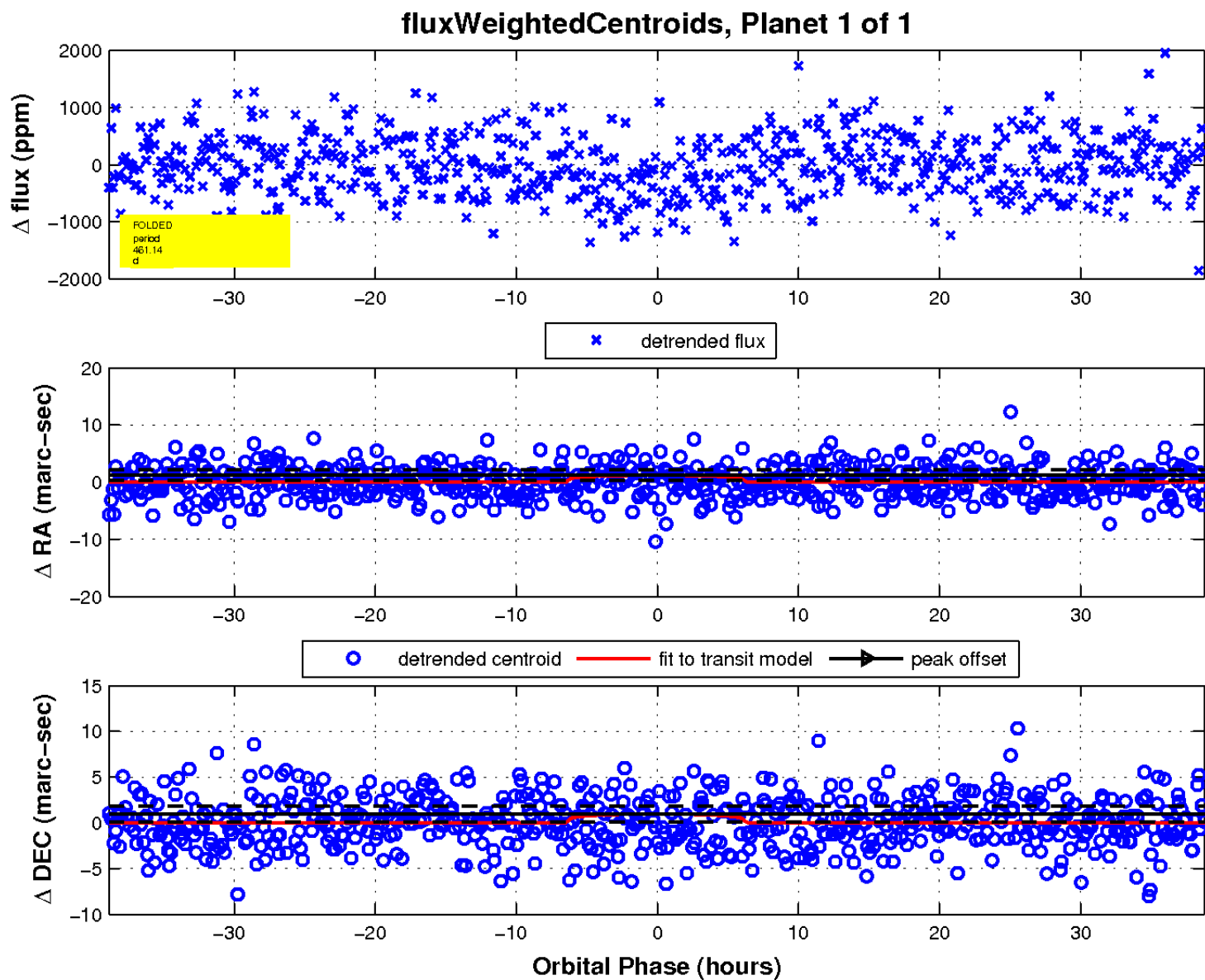
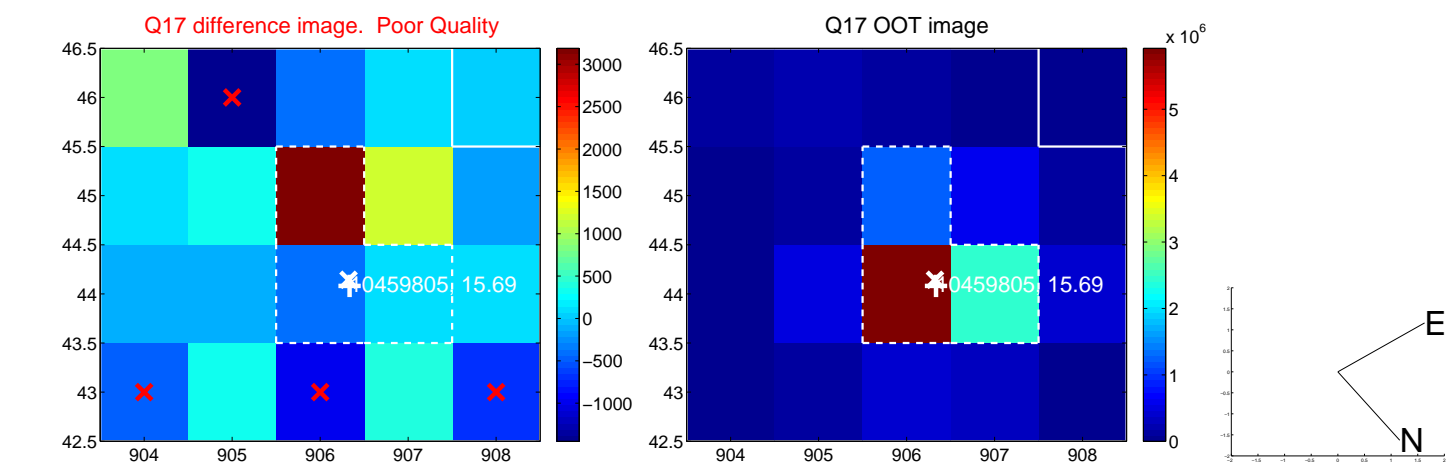
white \times : KIC target position; $+$: OOT centroid; \triangle : difference centroid. red \times : large negative pixel value.



white \times : KIC target position; $+$: OOT centroid; \triangle : difference centroid. red \times : large negative pixel value.



white \times : KIC target position; $+$: OOT centroid; \triangle : difference centroid. red \times : large negative pixel value.



UKIRT Image

Declination

