

KIC 010337885

Q1-17 DR25 TCE Parameters

TCE	Run Type	KOI?	Period (Days)	Epoch (BKJD)	Depth (ppm)	Duration (Hours)	MES	SNR	R_{\star} (R_{\odot})	T_{\star} (K)	R_p (R_{\oplus})	S_p (S_{\oplus})
010337885-01	OBS	No	499.204915	204.914959	911.7	6.739	7.3	7.5	0.69	4499	2.12	0.14

Robovetter Results

TCE	Run Type	Disp	Score	N	S	C	E	Comments
010337885-01	OBS	FP	0.00	1	0	0	0	INDIV_TRANS_MARSHALL—LPP_DV—CENT_FEW_DIFFS

Notes: OBS = Observed. INJ = Injected. INV = Inverted. SCR = Scrambled.

N = Not Transit-Like. S = Stellar Eclipse. C = Centroid Offset. E = Ephemeris Match.

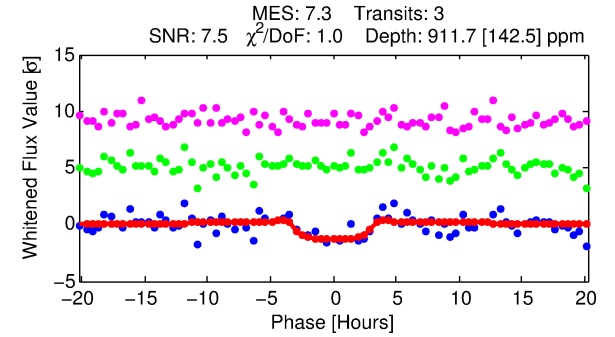
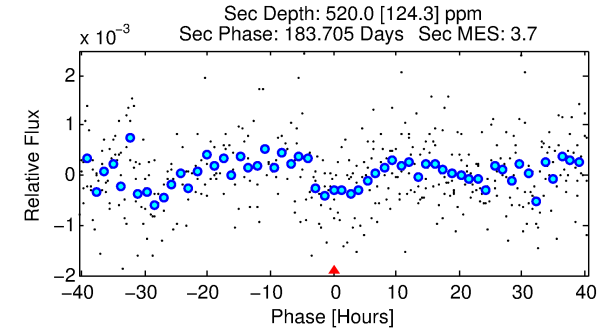
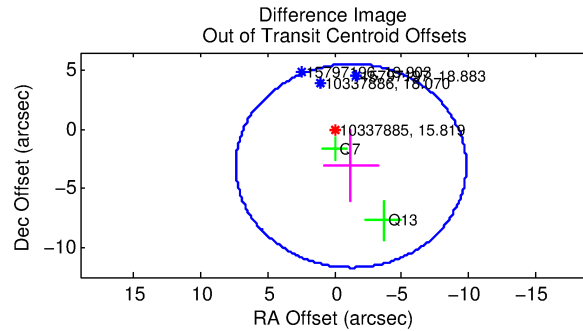
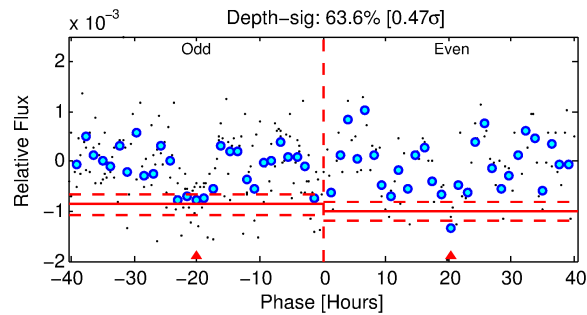
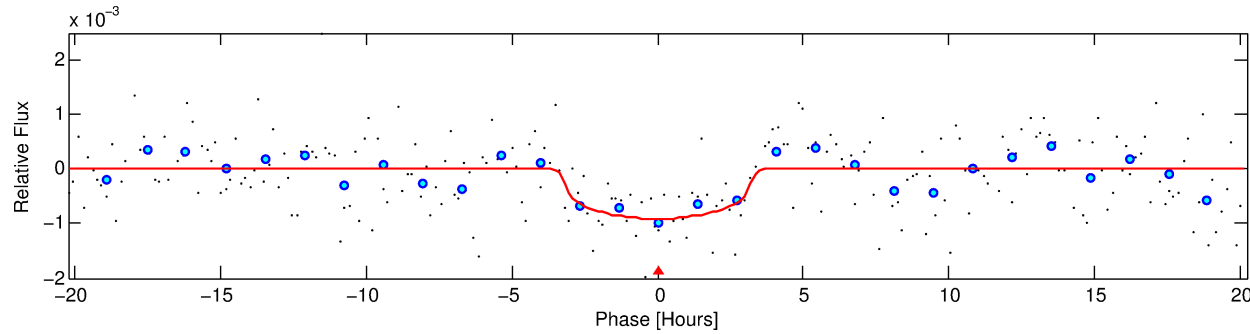
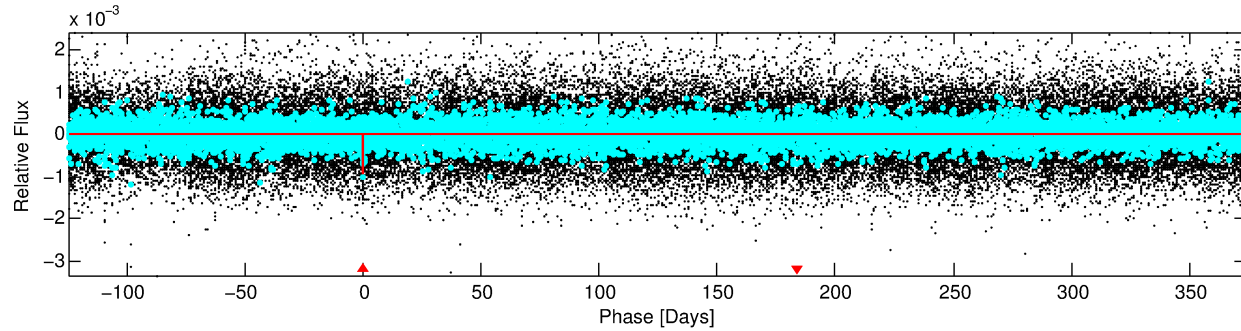
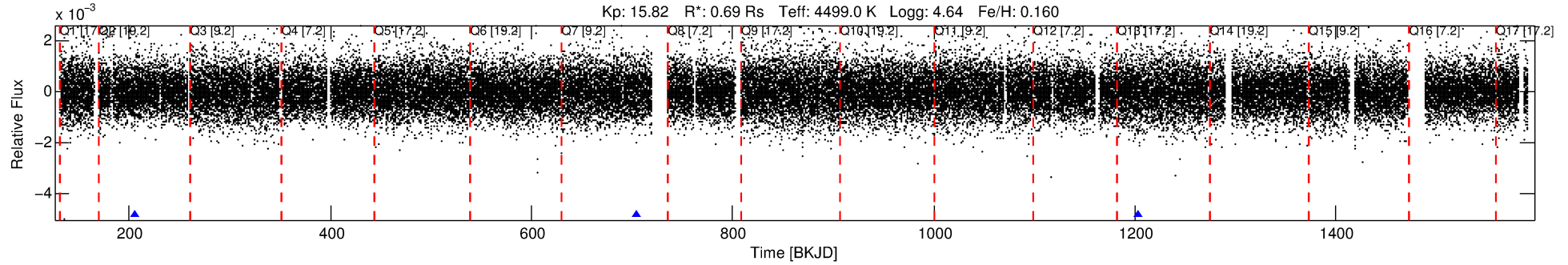
See http://exoplanetarchive.ipac.caltech.edu/docs/API_kepcandidate_columns.html#proj_disp_col for comment definitions.

Ephemeris Match Information For 010337885-01

No Significant Match Found

DV One-Page Summary

KIC: 10337885 Candidate: 1 of 1 Period: 499.205 d



DV Fit Results:

Period = 499.20491 [0.01159] d
Epoch = 204.9150 [0.0134] BKJD
Rp/R* = 0.0283 [0.0393]
a/R* = 477.85 [1966.07]
b = 0.59 [4.72]
Seff = 0.14 [0.02]
Teq = 156 [6] K
Rp = 2.12 [2.94] Re
a = 1.1152 [0.0622] AU
Ag = 79391.04 [221287.24] [0.36 σ]
Teff = 4037 [2815] K [1.38 σ]

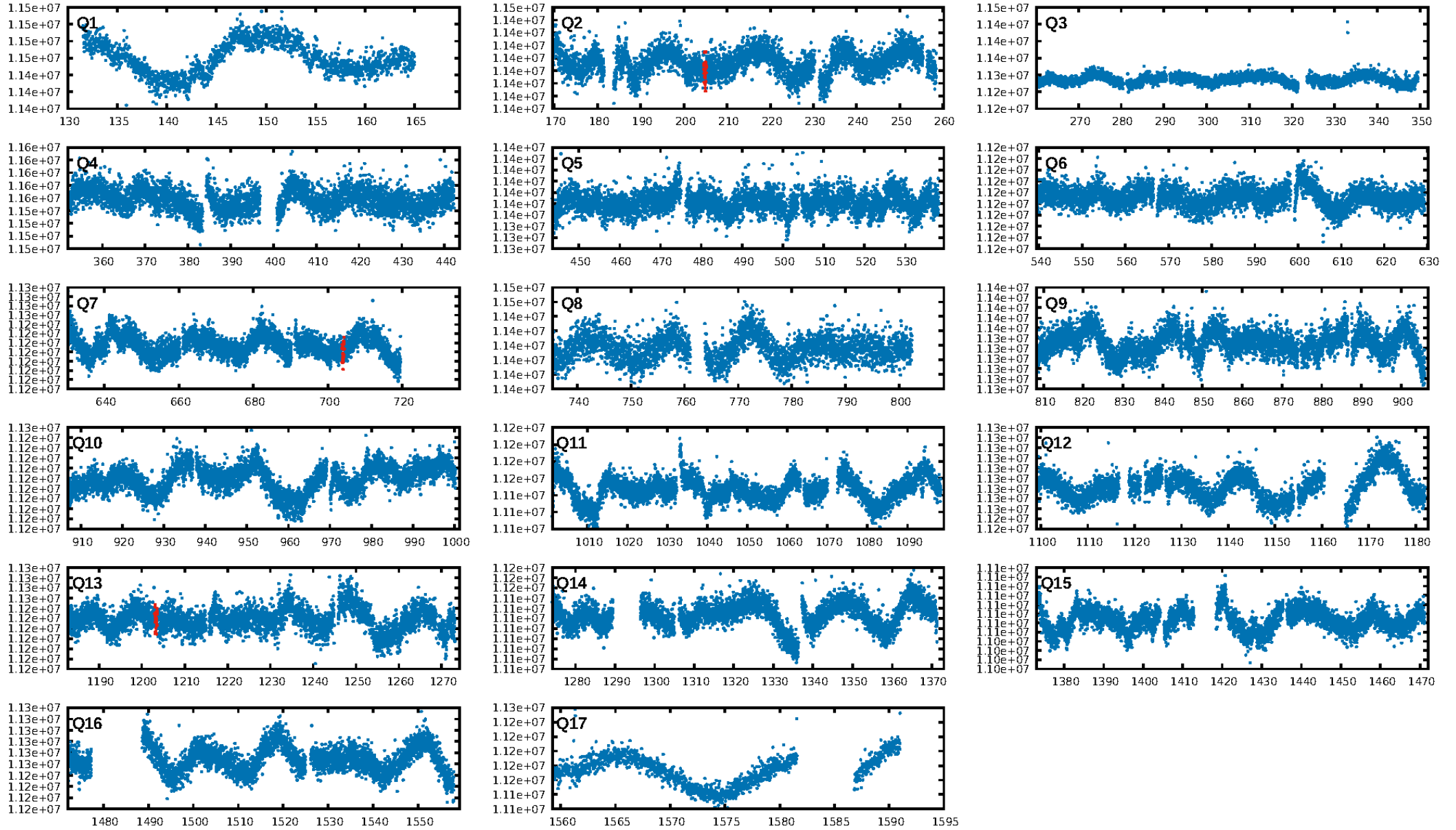
DV Diagnostic Results:

ShortPeriod-sig: N/A
LongPeriod-sig: N/A
ModelChiSquare2-sig: 47.7%
ModelChiSquareGof-sig: 99.8%
Bootstrap-pfa: 2.38e-08
RollingBand-fgt: 1.00 [3/3]
GhostDiagnostic-chr: 10.75
Centroid-sig: 33.5%
Centroid-so: 2.450 arcsec [0.94 σ]
OotOffset-rm: 3.331 arcsec [1.16 σ]
KicOffset-rm: 3.307 arcsec [1.18 σ]
OotOffset-st: 0/1/0/1 [2]
KicOffset-st: 0/1/0/1 [2]
DiffImageQuality-fgm: 0.00 [0/2]
DiffImageOverlap-fno: 1.00 [3/3]

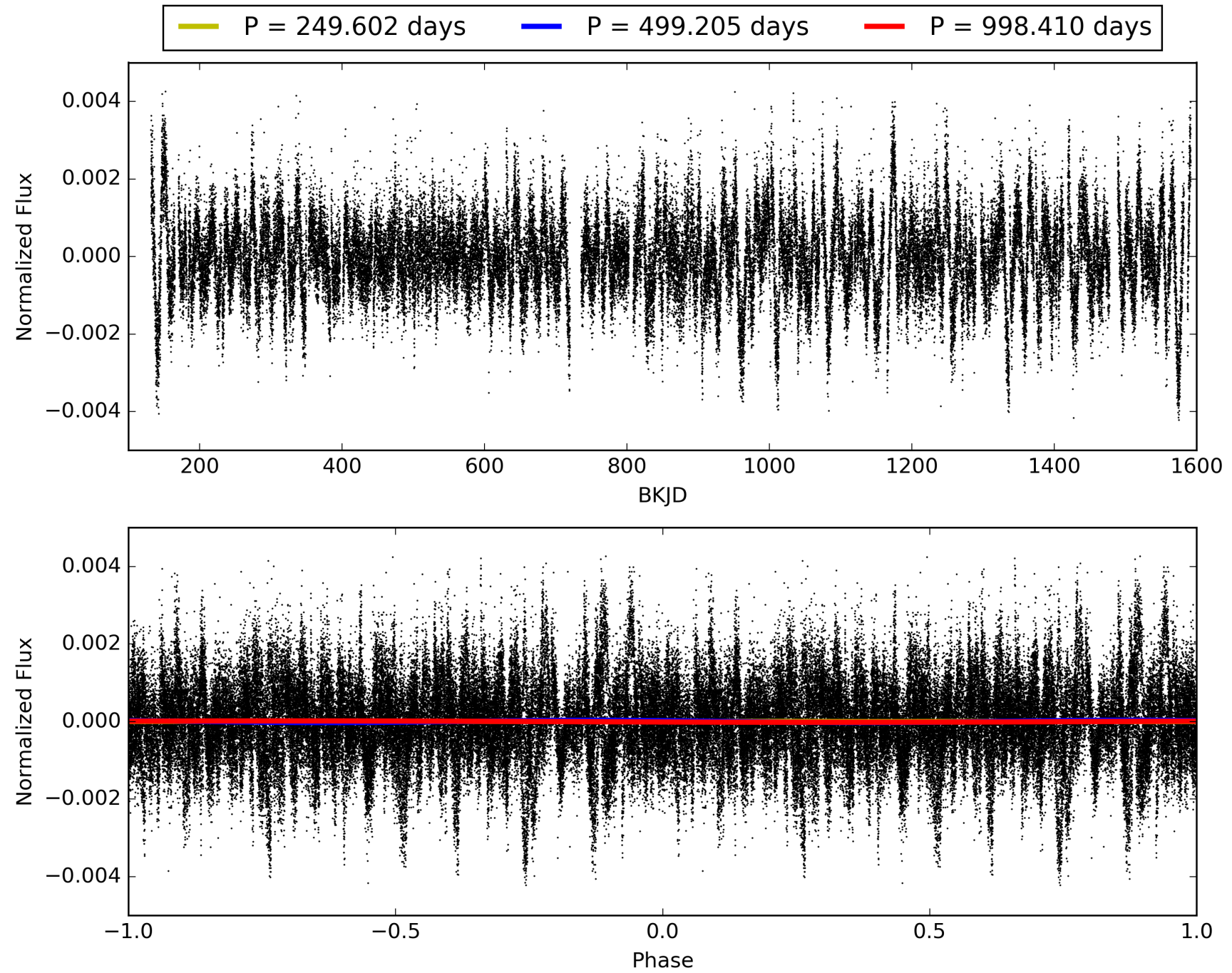
Software Revision: svn+ssh://murzim/repo/soc/tags/release/9.3.42@60958 -- Date Generated: 28-Jan-2016 20:28:24 Z

This Data Validation Report Summary was produced in the Kepler Science Operations Center Pipeline at NASA Ames Research Center

TCE 010337885-01, PDC Light Curves

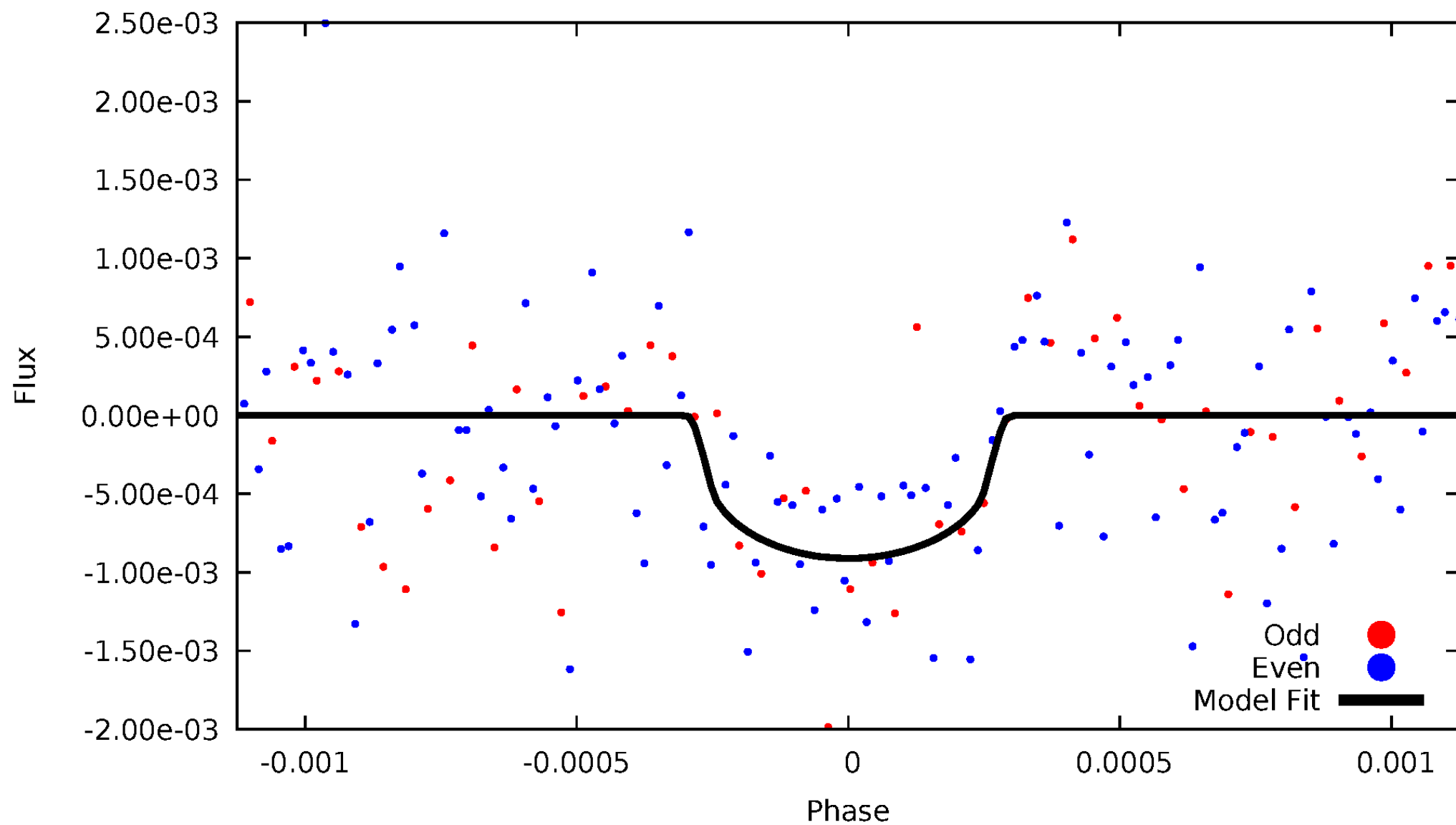


TCE 010337885-01



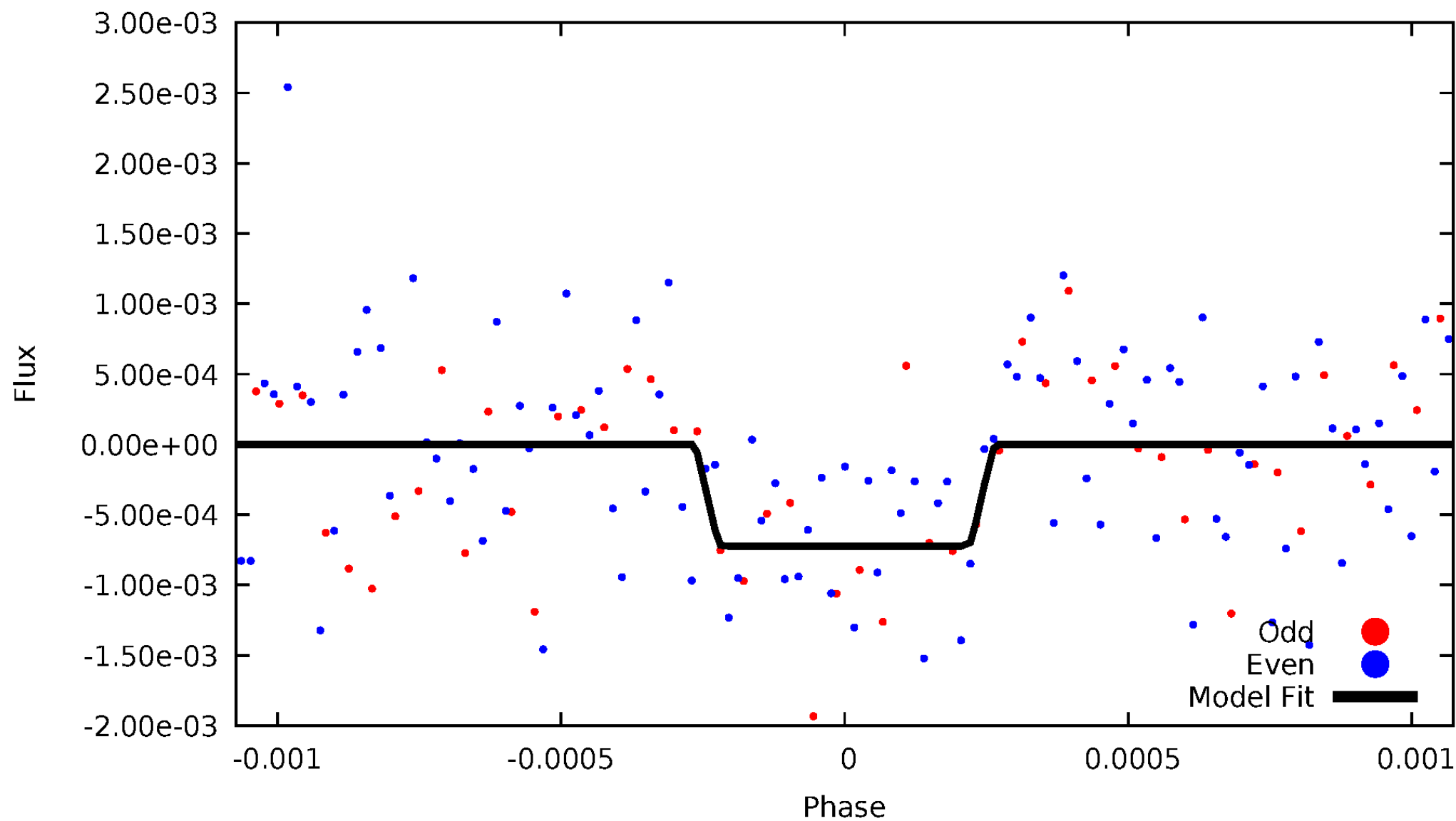
DV Odd/Even

TCE 010337885-01



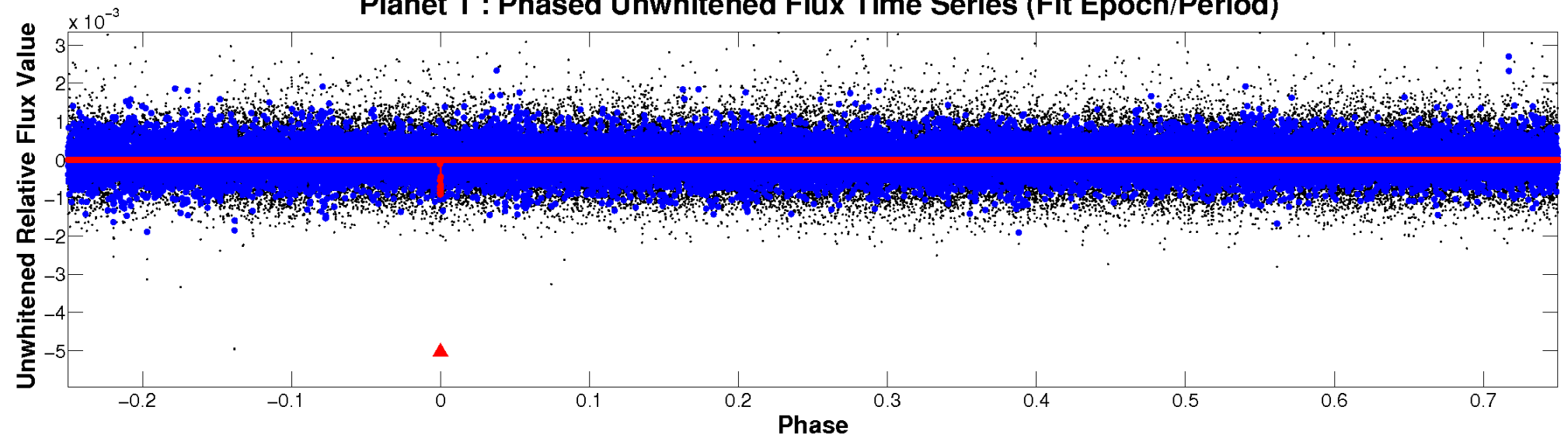
ALT Odd/Even

TCE 010337885-01

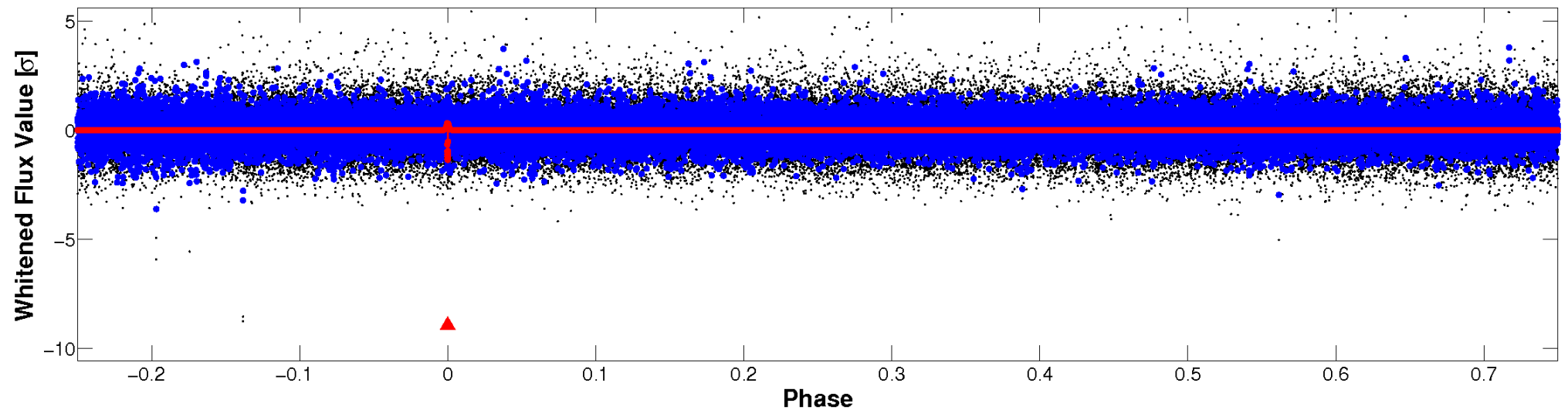


Non-Whitened Vs. Whitened Light Curve

Planet 1 : Phased Unwhitened Flux Time Series (Fit Epoch/Period)

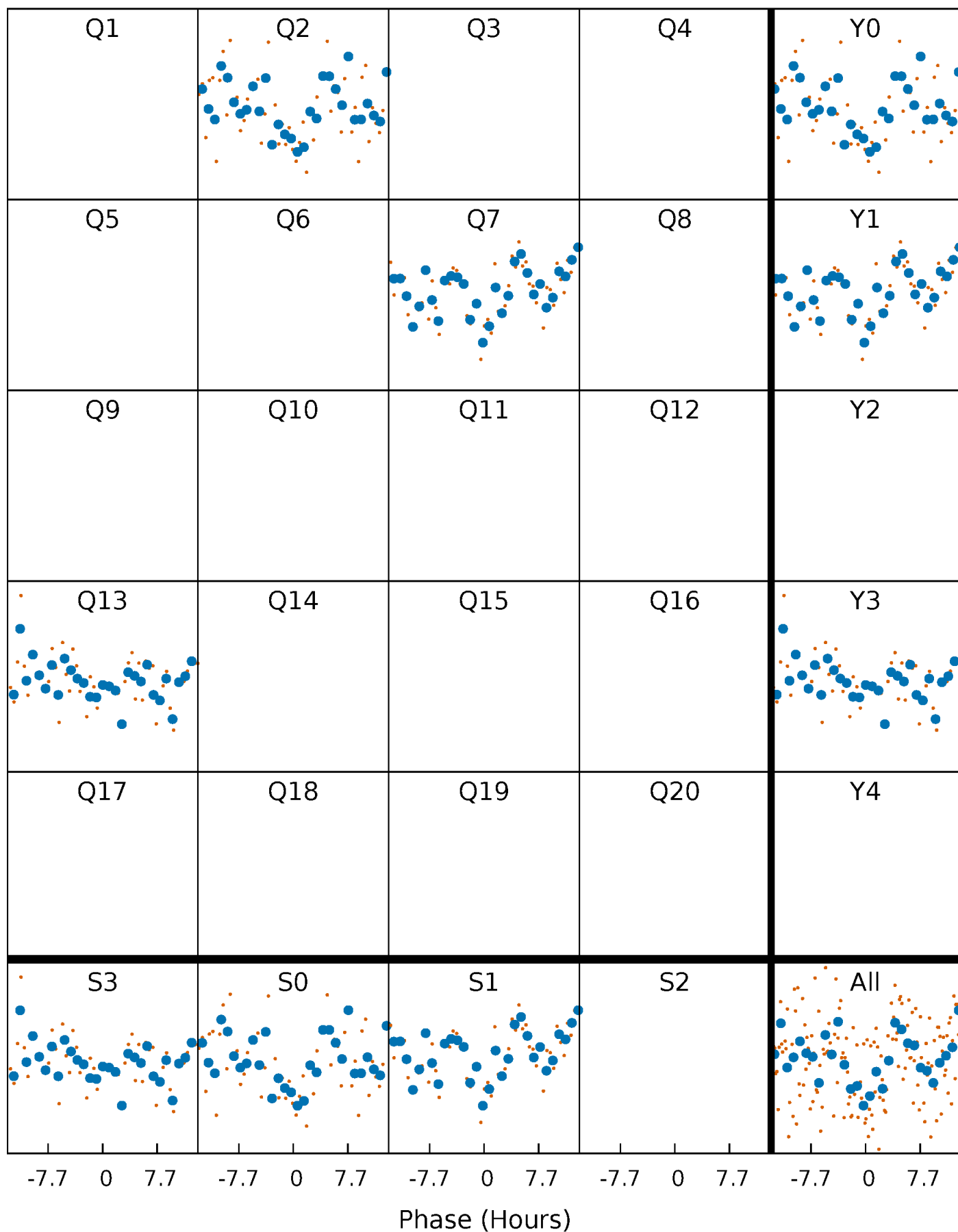


Planet 1 : Phased Whitened Flux Time Series (Fit Epoch/Period)



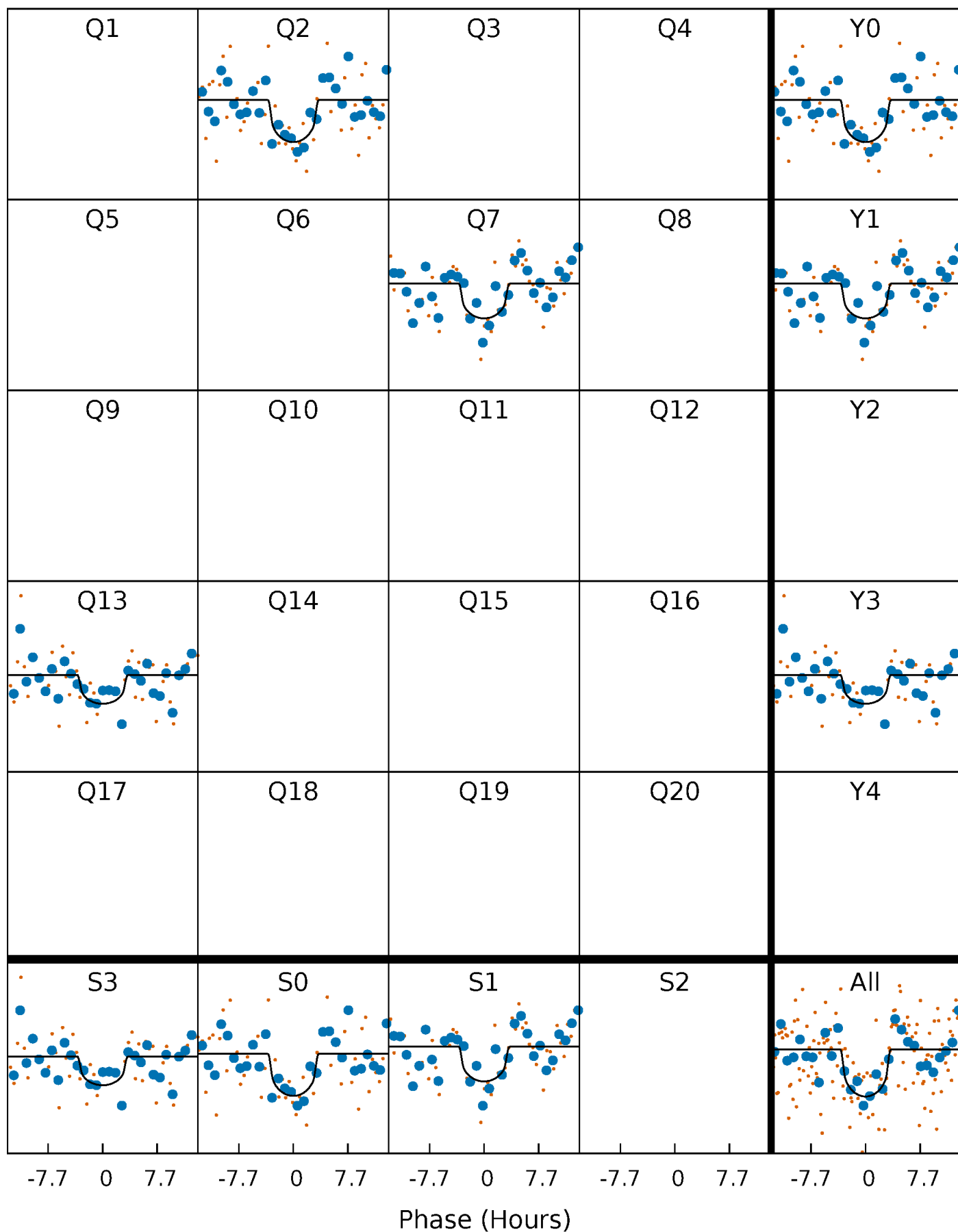
PDC Quarter-Phased Transit Curves

TCE 010337885-01 P=499.204915 Days $T_0=204.914959$ (BKJD)



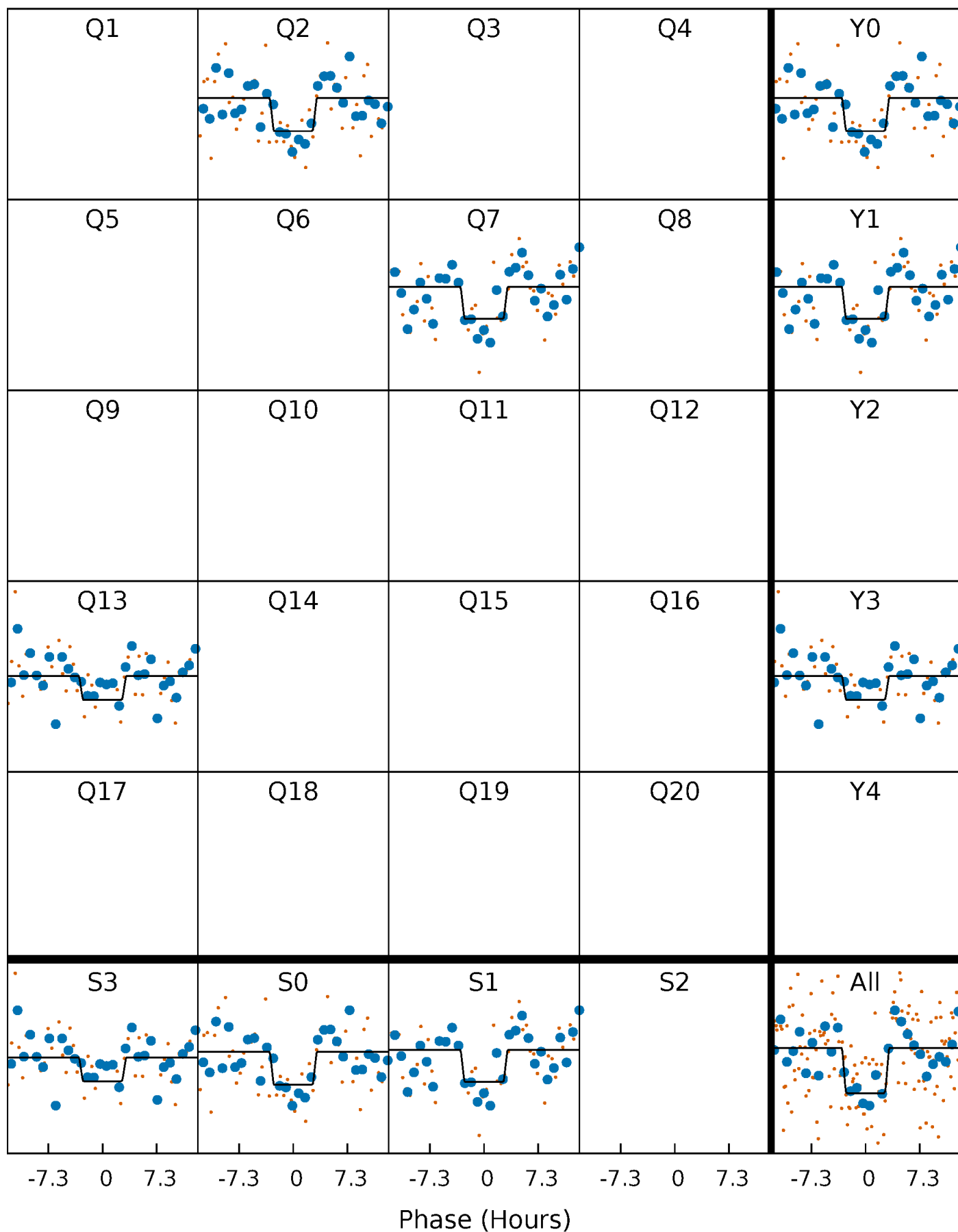
DV Quarter-Phased Transit Curves

TCE 010337885-01 P=499.204915 Days $T_0=204.914959$ (BKJD)



Alt. Detrend Quarter-Phased Transit Curves

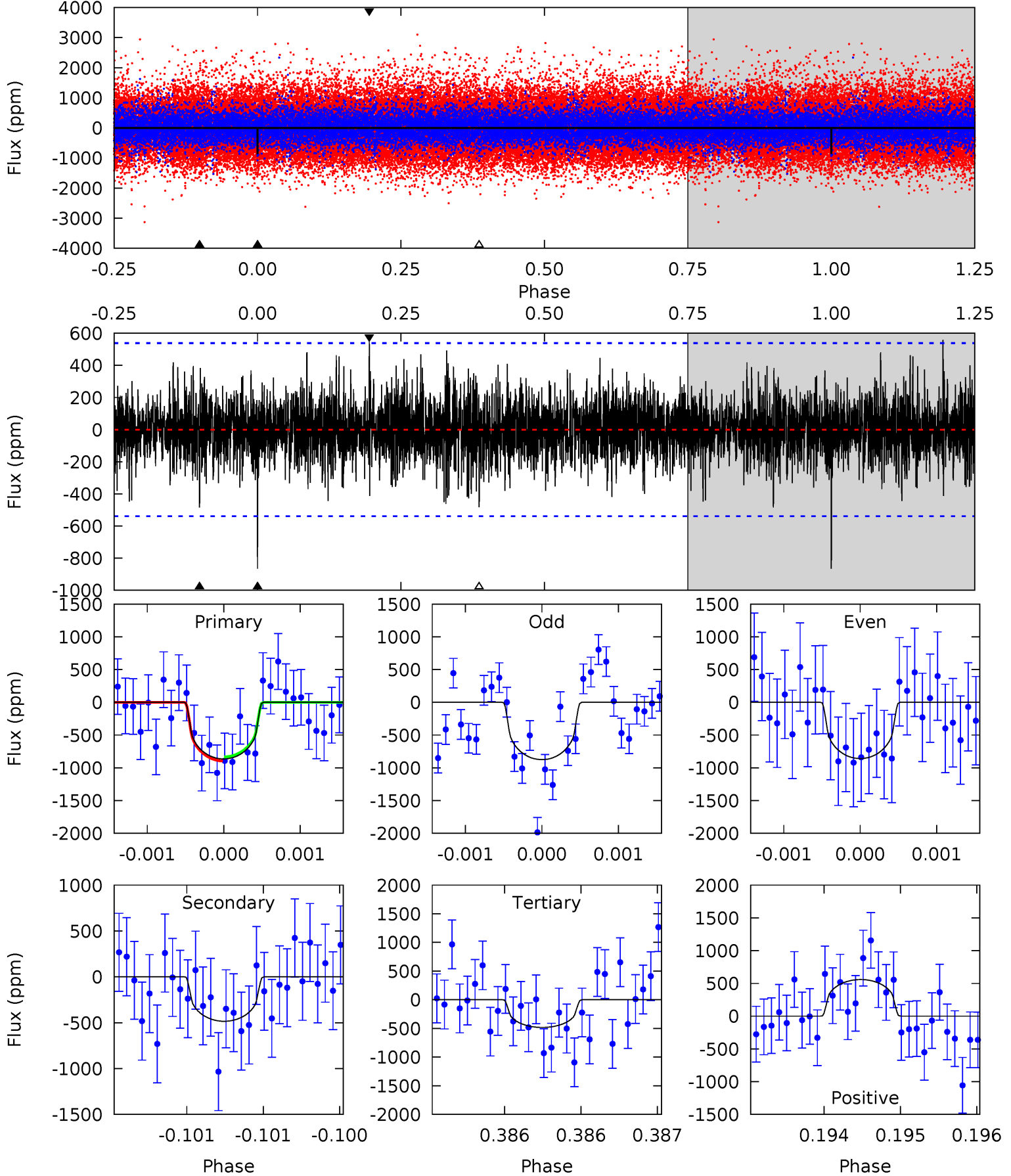
TCE 010337885-01 $P=499.205493$ Days $T_0=204.923275$ (BKJD)



DV Model-Shift Uniqueness Test

010337885-01, P = 499.204915 Days, E = 204.914959 Days

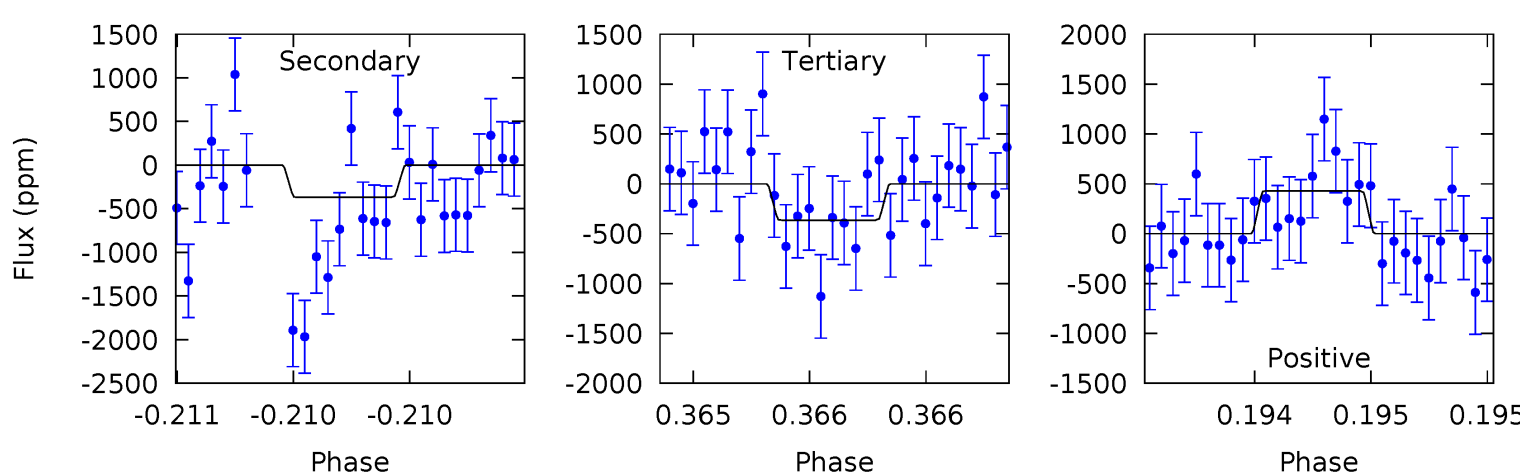
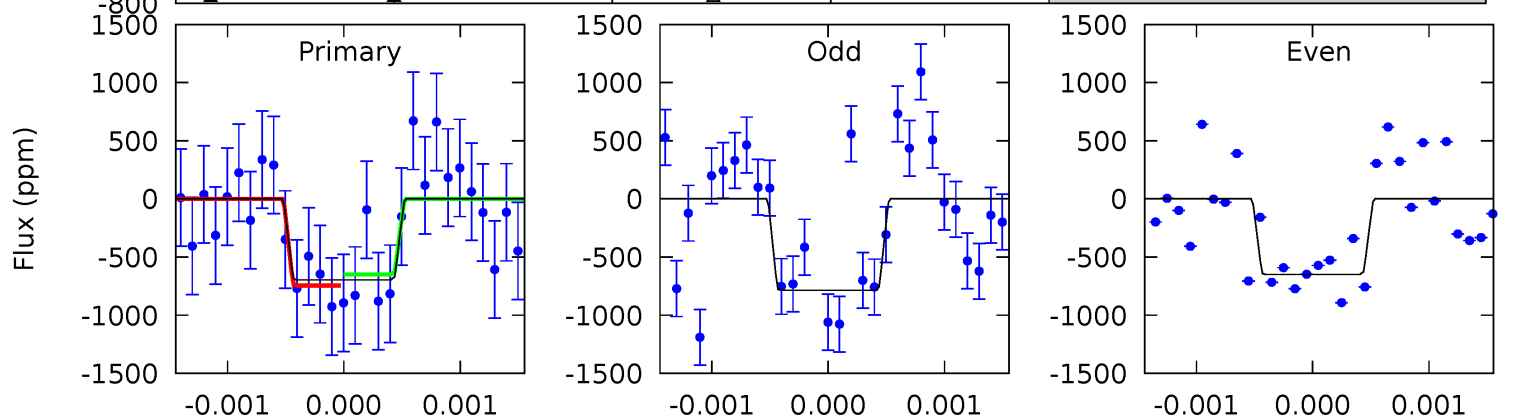
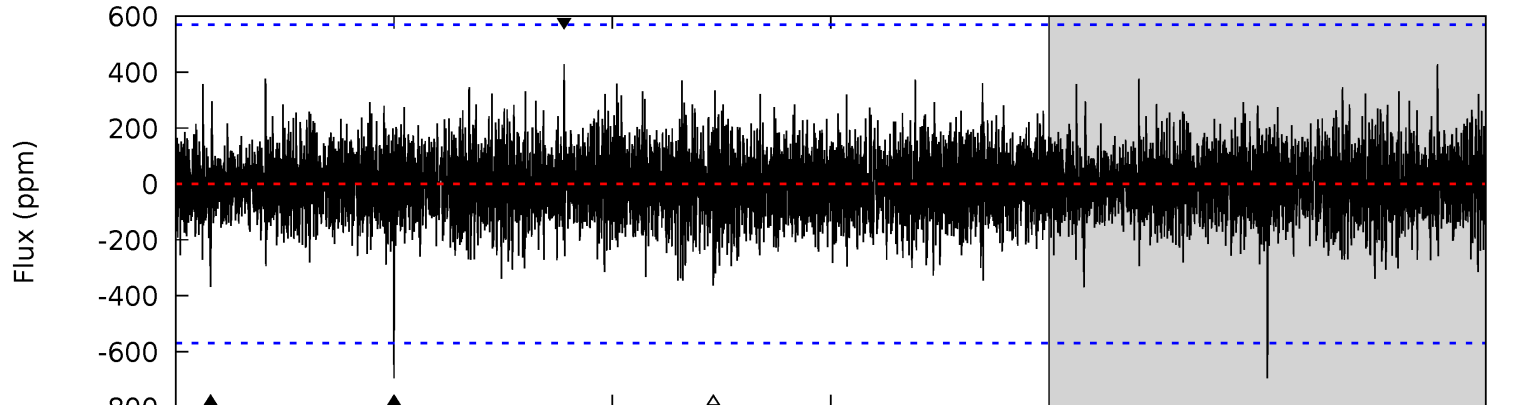
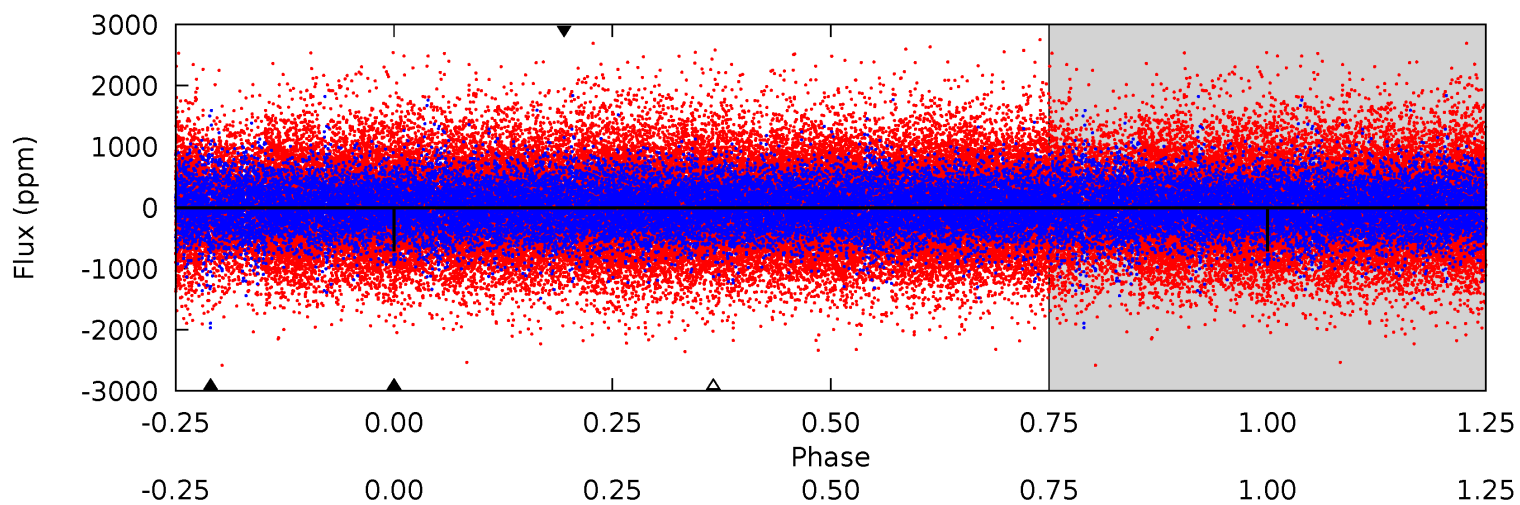
Pri	Sec	Ter	Pos	FA ₁	FA ₂	F _{Red}	Pri-Ter	Pri-Pos	Sec-Ter	Sec-Pos	Odd-Evn	DMM	Shape	TAT
8.90	4.99	4.97	5.75	5.54	3.44	1.38	3.93	3.15	0.02	-0.76	0.08	0.99	0.39	0.32



Alt Model-Shift Uniqueness Test

010337885-01, $P = 499.205493$ Days, $E = 204.923275$ Days

Pri	Sec	Ter	Pos	FA ₁	FA ₂	F _{Red}	Pri-Ter	Pri-Pos	Sec-Ter	Sec-Pos	Odd-Evn	DMM	Shape	TAT
6.81	3.61	3.56	4.19	5.57	3.48	0.96	3.25	2.62	0.04	-0.58	0.63	0.88	0.38	0.47



Stellar Parameters For KIC 010337885

	$T_{\text{eff}}(K)$	$\log(g)$	[Fe/H]	$R (R_{\odot})$	$M(M_{\odot})$	$p_{\star} (\text{g}\cdot\text{cm}^{-3})$
	4499^{+134}_{-121}	$4.637^{+0.021}_{-0.045}$	$0.160^{+0.200}_{-0.300}$	$0.685^{+0.045}_{-0.045}$	$0.750^{+0.031}_{-0.068}$	$3.280^{+0.382}_{-0.500}$
	+3%/-3%	+0%/-1%	+125%/-188%	+7%/-7%	+4%/-9%	+12%/-15%
Source	PHO1	KIC0	KIC0	DSEP		

KIC = Kepler Input Catalog; PHO = Photometry; SPE = Spectroscopy; AST = Asteroseismology
 TRA = Transits; DESP = Dartmouth Models; MULT = Multiple Models

Secondary Eclipse Parameters for KIC 010337885-01 / KOI

Detrend	Depth (ppm)	$R_p (R_{\oplus})$	$T_{max} (K)$	$T_{obs} (K)$	A_{obs}
DV	-485 ± 97	$3.05^{+2.67}_{-2.02}$	219^{+7}_{-7}	3627^{+1884}_{-648}	$35063^{+279721}_{-25500}$
Alt.	-369 ± 102	$3.03^{+2.52}_{-2.04}$	219^{+7}_{-6}	3477^{+1656}_{-606}	$27338^{+212557}_{-19793}$

T_{max} = Theoretical Maximum Planetary Temperature

T_{obs} = Observed Planetary Temperature (Assuming $A=0.3$)

A_{obs} = Observed Albedo (Assuming $T=0$)

If a secondary eclipse is present, the system is likely an EB if $T_{obs} \gg T_{max}$ AND $A_{obs} \gg 1.0$

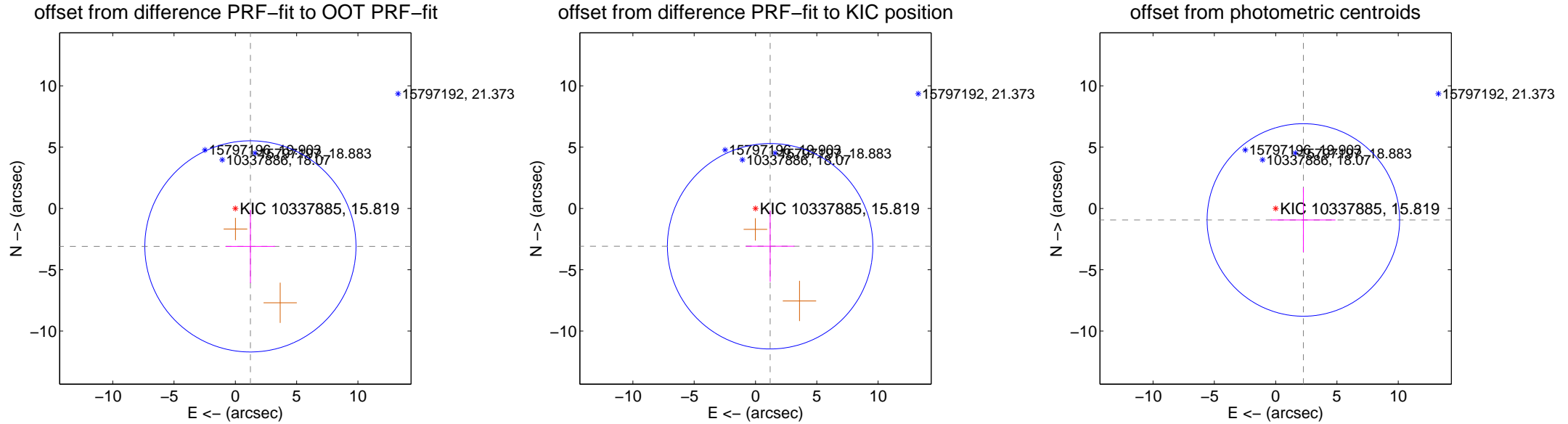
DV Centroid Data

Supplemental centroid analysis for 010337885-01. Kepler magnitude: 15.82. Transit SNR 7.48

There are 0 quarters with good PRF difference image offsets

The direct PRF centroid is offset from the target star catalog position by about 0.16 arcsec

	Distance in arcsec	Distance / σ	Δ RA	Δ Dec
PRF-fit source offset from OOT	3.331 ± 2.871	1.16	-1.230 ± 2.013	-3.096 ± 2.984
PRF-fit source offset from KIC position	3.307 ± 2.794	1.18	-1.195 ± 1.983	-3.084 ± 2.896
photometric centroid source offset	2.45 ± 2.62	0.94	-2.26 ± 2.62	-0.94 ± 2.62



Centroid source offsets from the target star reconstructed from PRF and photometric centroids. Sky blue crosses: good quarterly centroid offsets; Vermillion crosses: bad quarterly centroid offsets; magenta cross: average over quarters. Length of the crosses: one- σ uncertainty. Blue circle: three- σ . Red *: target star. Blue *: Other stars. Text next to a star gives its KIC ID and kepmag. KIC IDs > 15,000,000 are from the UKIRT catalog.

white \times : KIC target position; $+$: OOT centroid; \triangle : difference centroid. red \times : large negative pixel value.

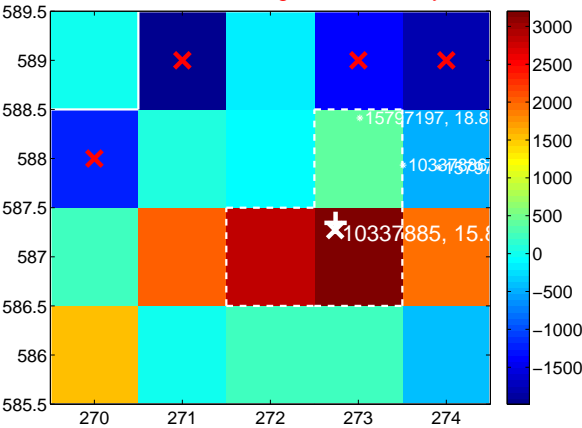
Q1 no difference image



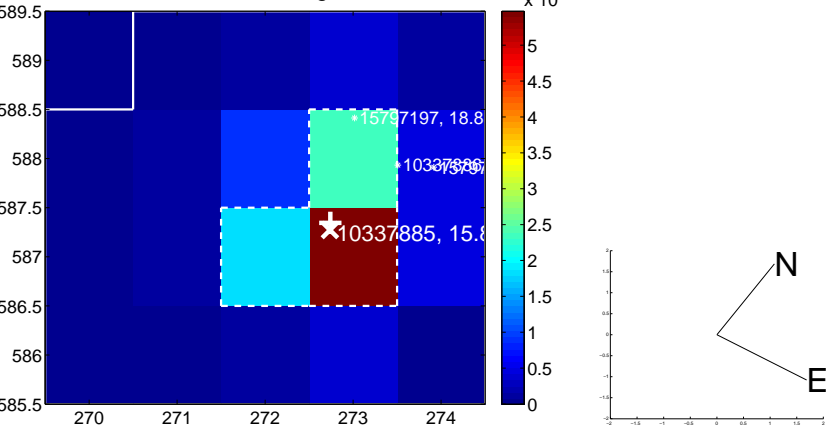
Q1 no OOT image



Q2 difference image. Poor Quality



Q2 OOT image



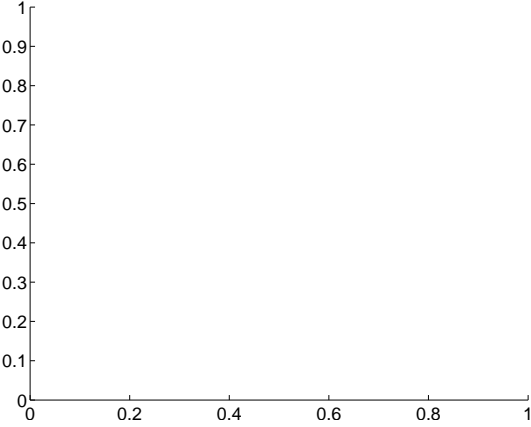
Q3 no difference image



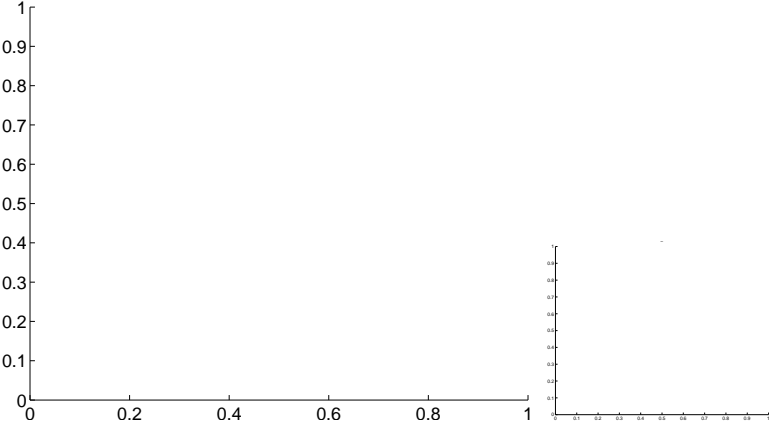
Q3 no OOT image



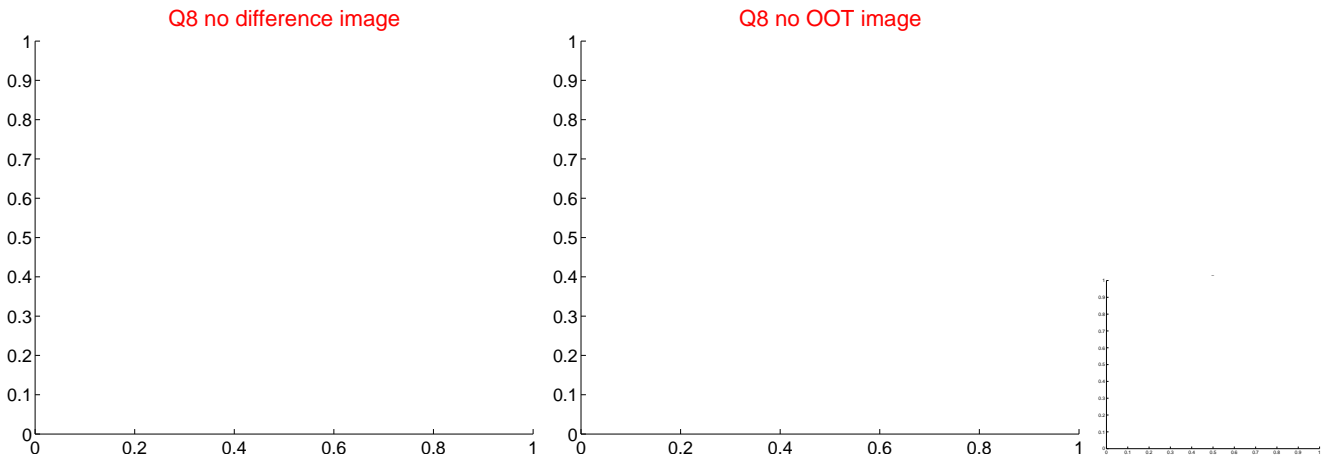
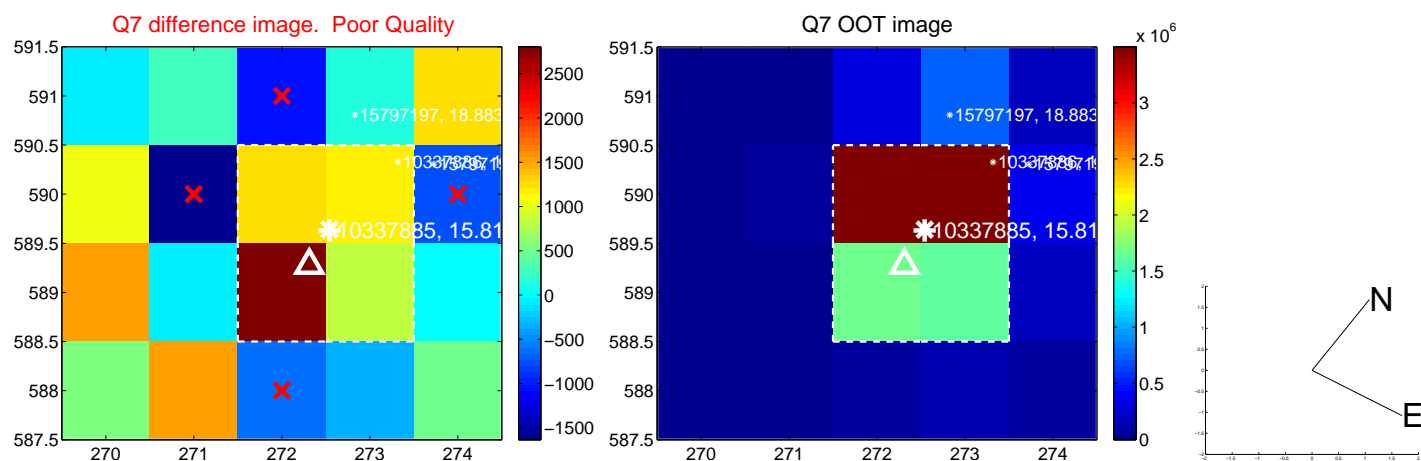
Q4 no difference image



Q4 no OOT image



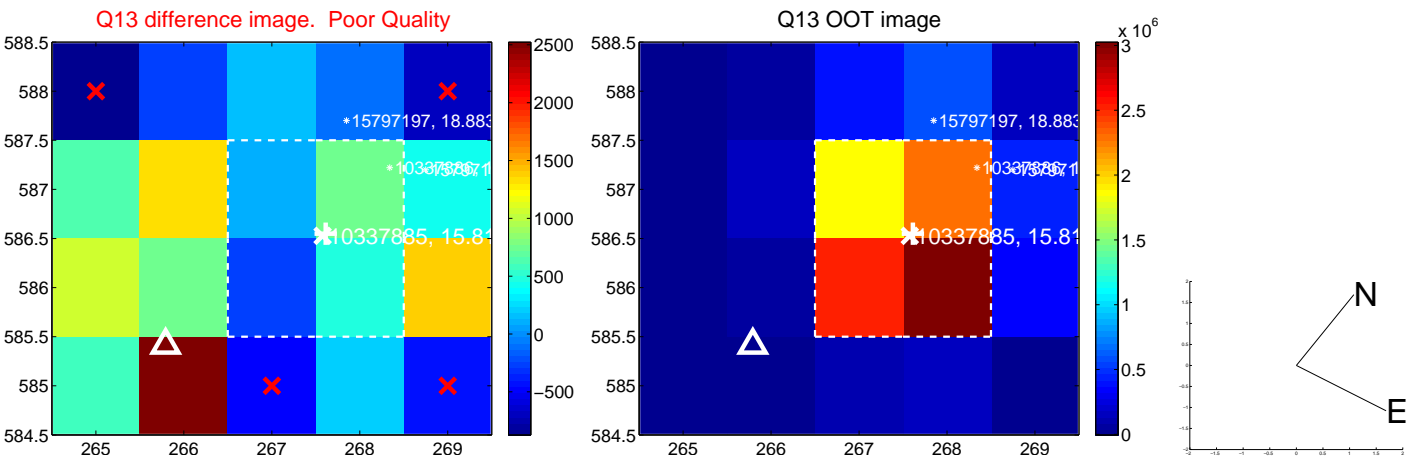
white \times : KIC target position; $+$: OOT centroid; \triangle : difference centroid. red \times : large negative pixel value



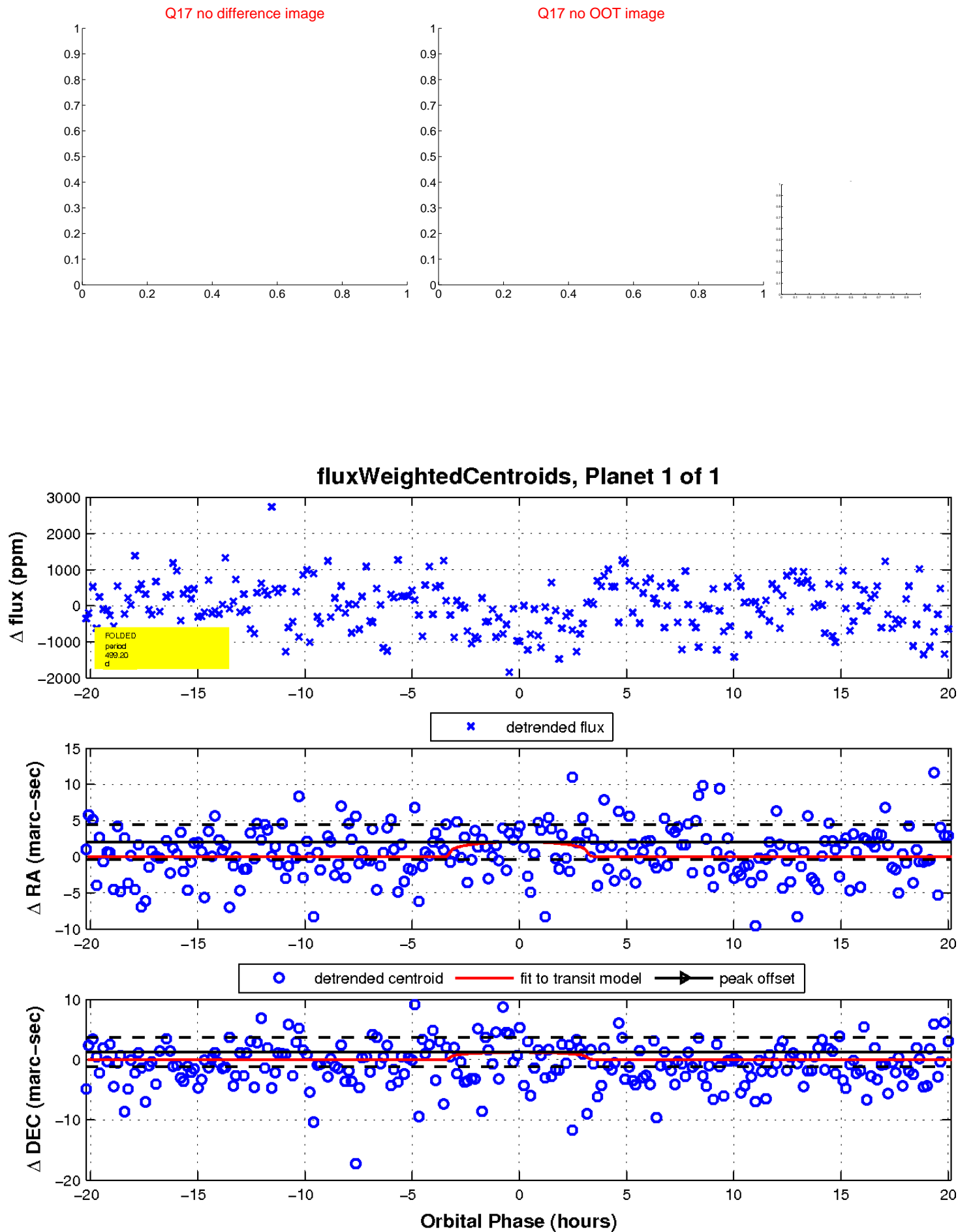
white \times : KIC target position; $+$: OOT centroid; \triangle : difference centroid. red \times : large negative pixel value.



white ×: KIC target position; +: OOT centroid; △: difference centroid. red ×: large negative pixel value.



white \times : KIC target position; $+$: OOT centroid; \triangle : difference centroid. red \times : large negative pixel value.



UKIRT Image

Declination

