

KIC 010128321

Q1-17 DR25 TCE Parameters

TCE	Run Type	KOI?	Period (Days)	Epoch (BKJD)	Depth (ppm)	Duration (Hours)	MES	SNR	R_{\star} (R_{\odot})	T_{\star} (K)	R_p (R_{\oplus})	S_p (S_{\oplus})
010128321-01	OBS	No	0.541378	131.953529	30.3	1.834	8.0	6.4	0.90	5790	0.59	4835.44

Robovetter Results

TCE	Run Type	Disp	Score	N	S	C	E	Comments
010128321-01	OBS	FP	0.00	1	0	1	0	LPP_DV—LPP_ALT—MOD_NONUNIQ_DV—MOD_NONUNIQ_ALT—MOD_TER_ALT—MOD_POS_ALT—CENT_RESOLVED_OFFSET

Notes: OBS = Observed. INJ = Injected. INV = Inverted. SCR = Scrambled.

N = Not Transit-Like. S = Stellar Eclipse. C = Centroid Offset. E = Ephemeris Match.

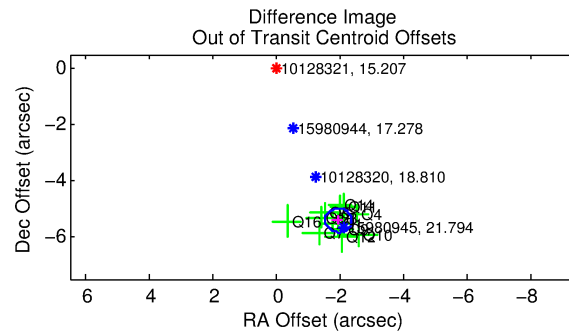
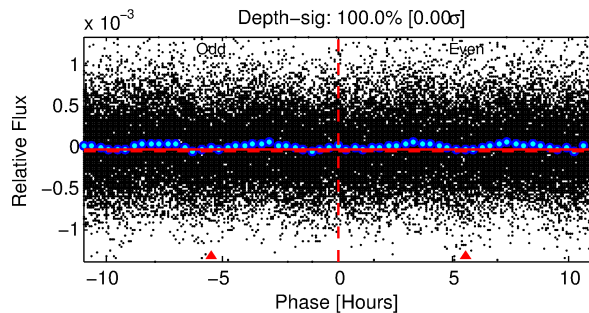
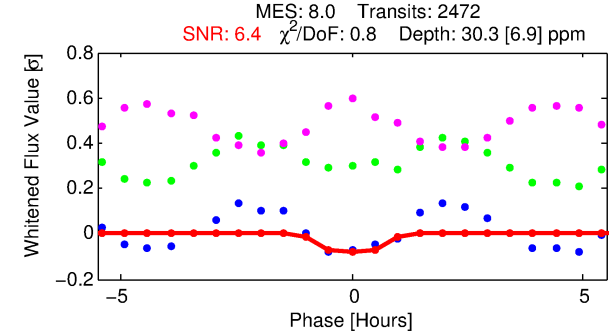
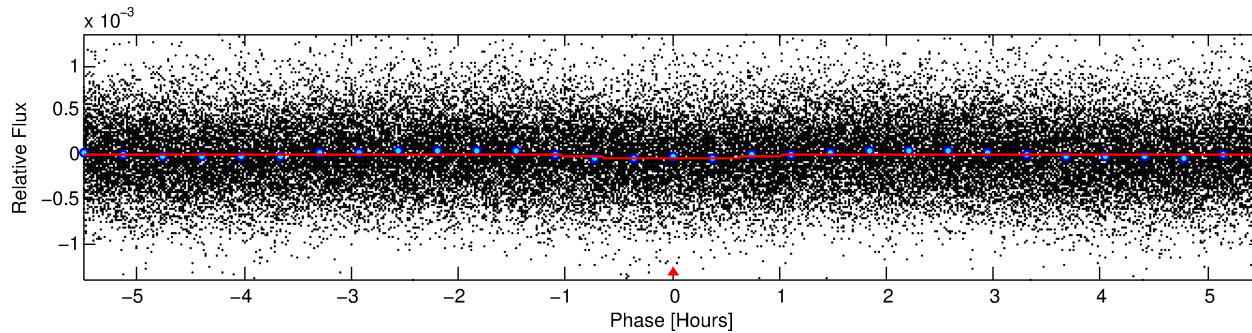
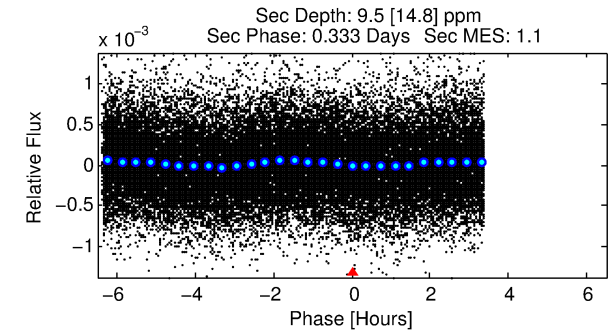
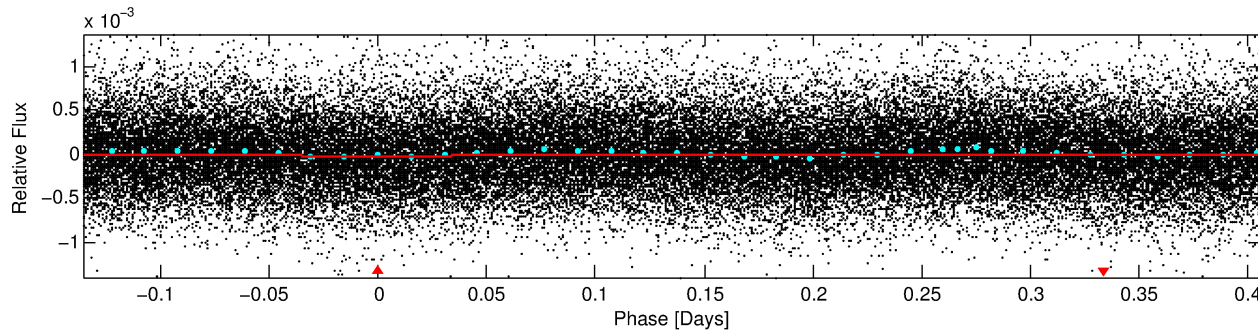
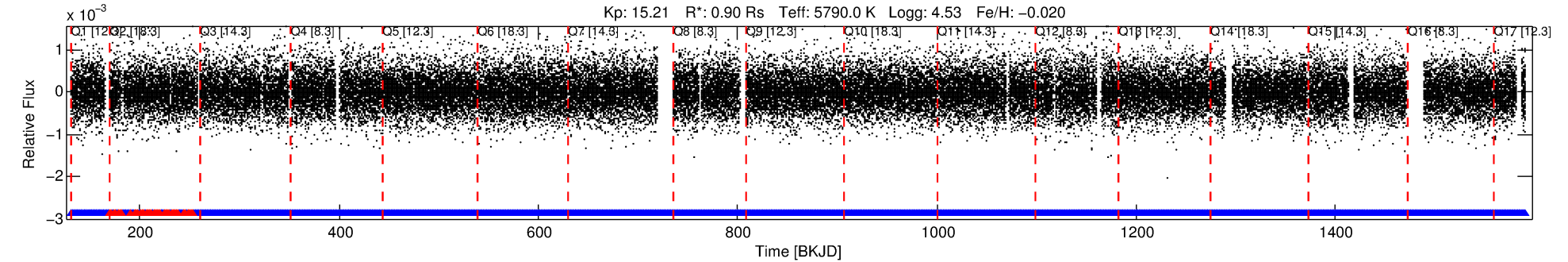
See http://exoplanetarchive.ipac.caltech.edu/docs/API_kepcandidate_columns.html#proj_disp_col for comment definitions.

Ephemeris Match Information For 010128321-01

No Significant Match Found

DV One-Page Summary

KIC: 10128321 Candidate: 1 of 1 Period: 0.541 d



DV Fit Results:

Period = 0.54138 [0.00002] d
Epoch = 131.9535 [0.0041] BKJD
Rp/R* = 0.0060 [0.0059]
a/R* = 1.39 [3.22]
b = 0.90 [1.08]
Seff = 4835.44 [1850.91]
Teq = 2126 [203] K
Rp = 0.59 [0.61] Re
a = 0.0130 [0.0032] AU
Ag = 2.56 [6.53] [0.24σ]
Teffp = 4159 [2629] K [0.77σ]

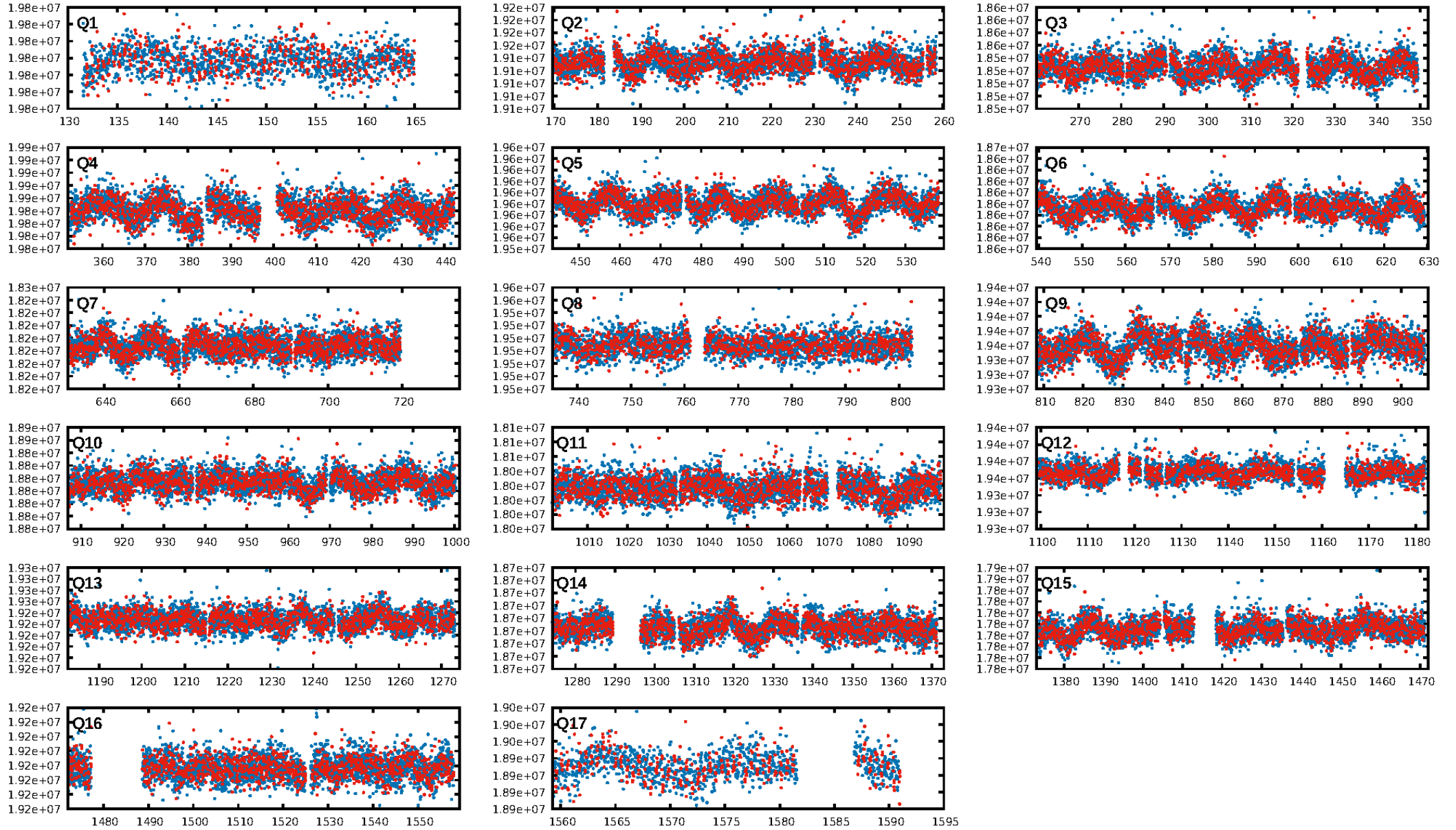
DV Diagnostic Results:

ShortPeriod-sig: N/A
LongPeriod-sig: N/A
ModelChiSquare2-sig: N/A
ModelChiSquareGof-sig: N/A
Bootstrap-pfa: 1.59e-15
RollingBand-fgt: 0.98 [2311/2361]
GhostDiagnostic-chr: 5.095
Centroid-sig: 0.2%
Centroid-so: 6.014 arcsec [3.02σ]
OotOffset-rm: 5.754 arcsec [41.32σ]
KicOffset-rm: 5.903 arcsec [42.38σ]
OotOffset-st: 2/3/3/4 [12]
KicOffset-st: 2/3/3/4 [12]
DiffImageQuality-fgm: 0.92 [11/12]
DiffImageOverlap-fno: 1.00 [17/17]

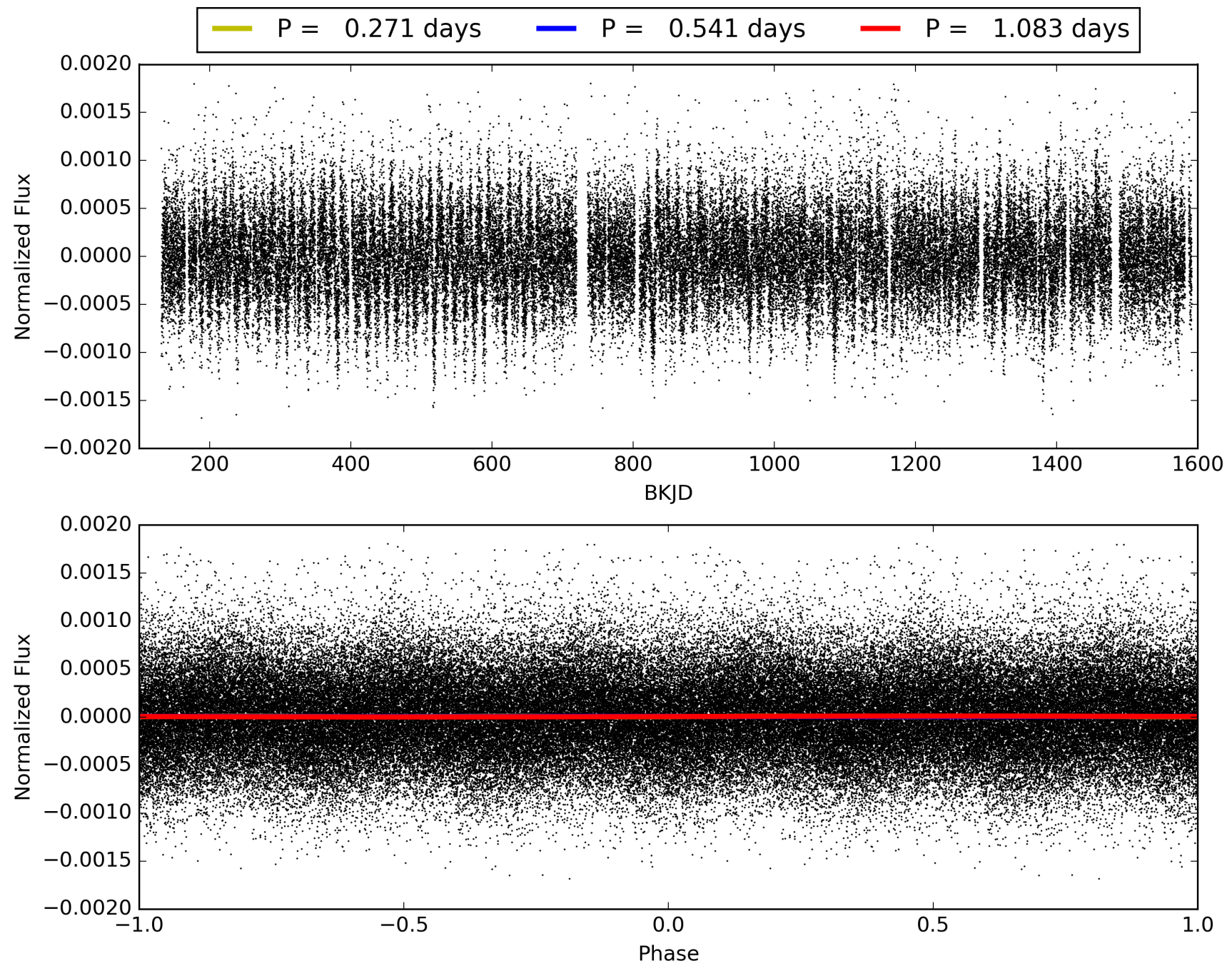
Software Revision: svn+ssh://murzim/repo/soc/tags/release/9.3.42@60958 -- Date Generated: 29-Jan-2016 02:54:37 Z

This Data Validation Report Summary was produced in the Kepler Science Operations Center Pipeline at NASA Ames Research Center

TCE 010128321-01, PDC Light Curves

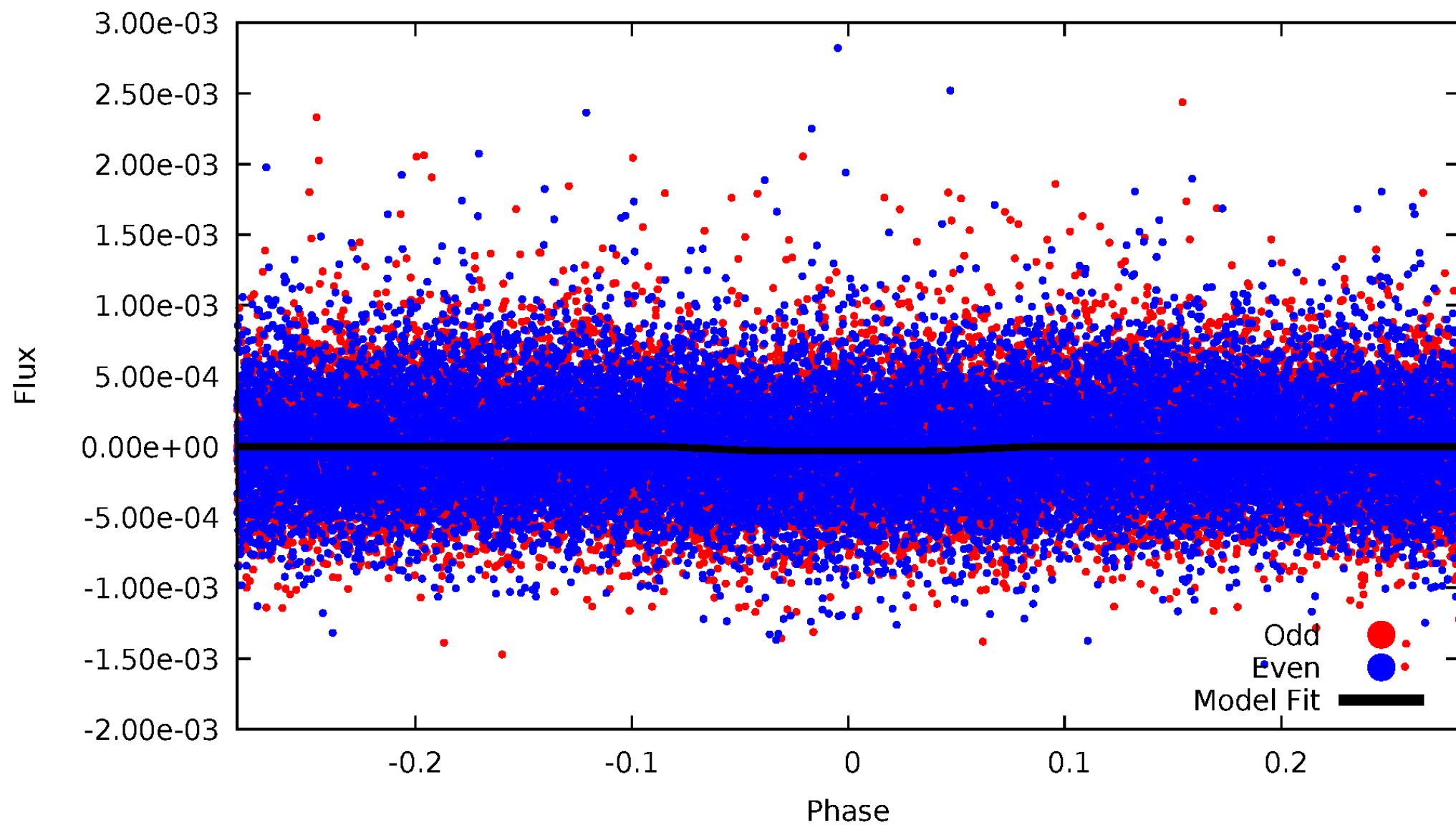


TCE 010128321-01



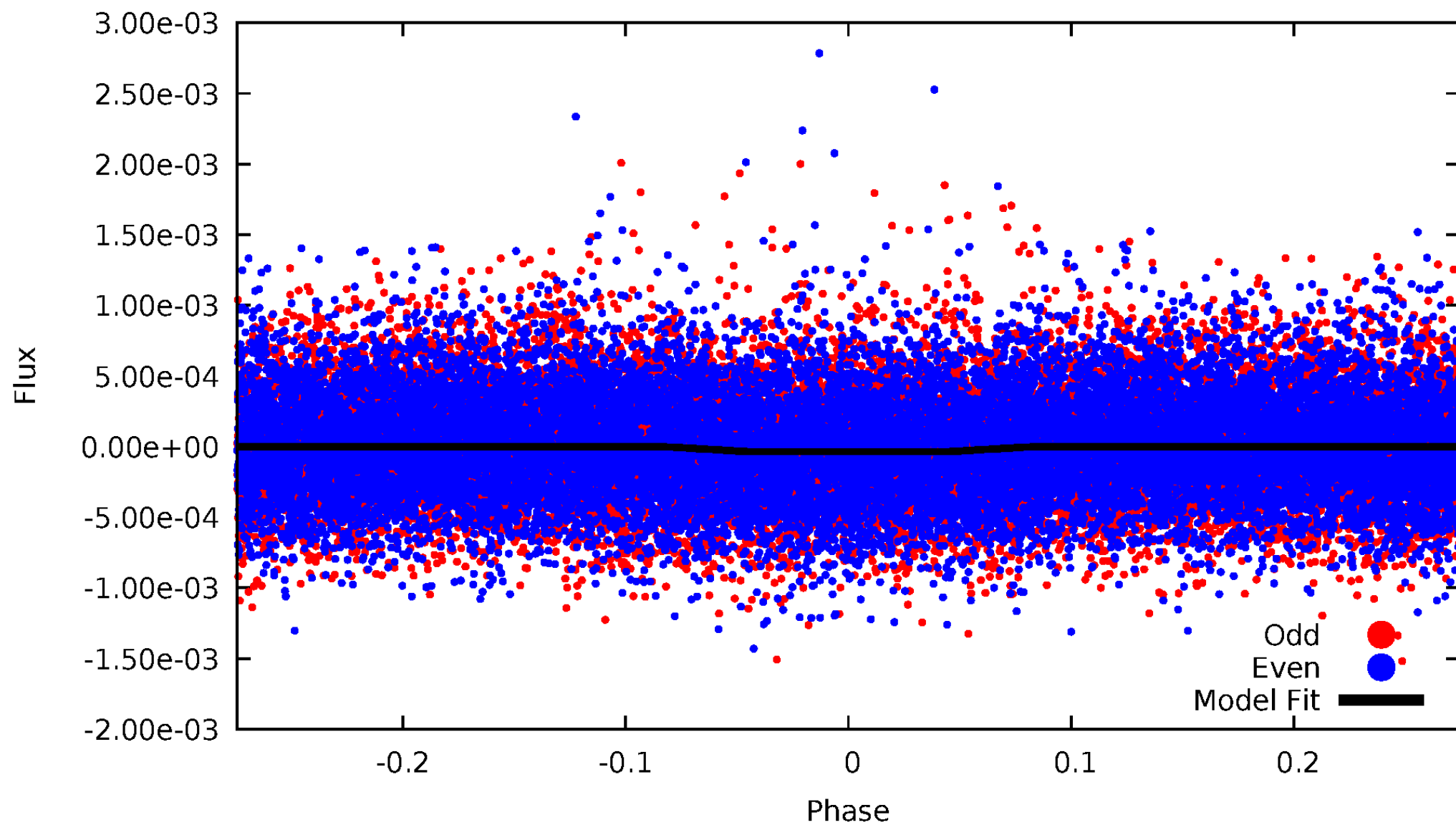
DV Odd/Even

TCE 010128321-01



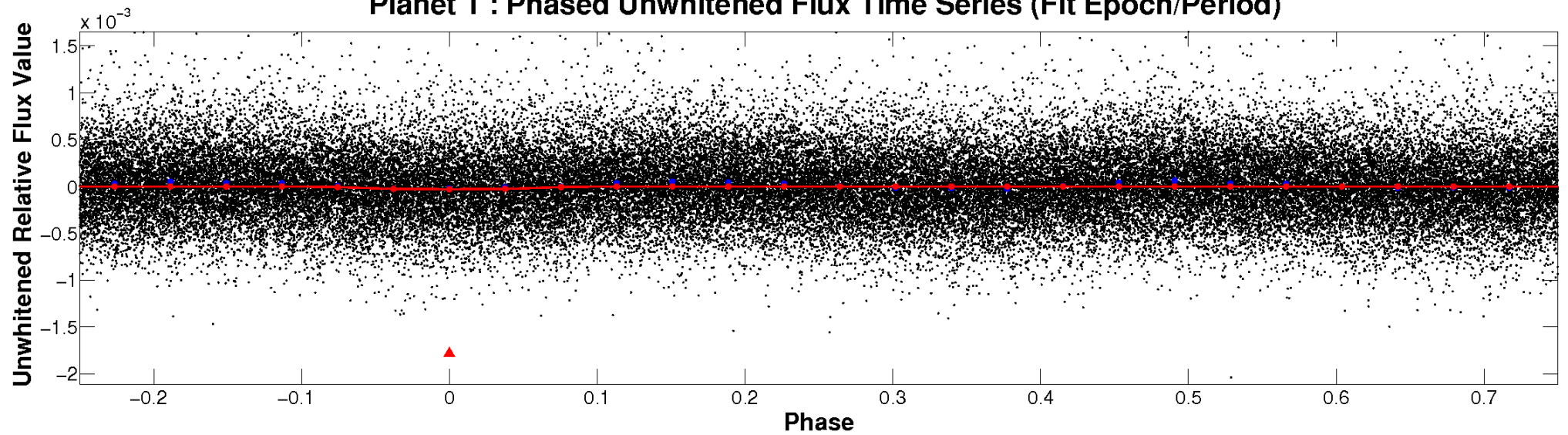
ALT Odd/Even

TCE 010128321-01

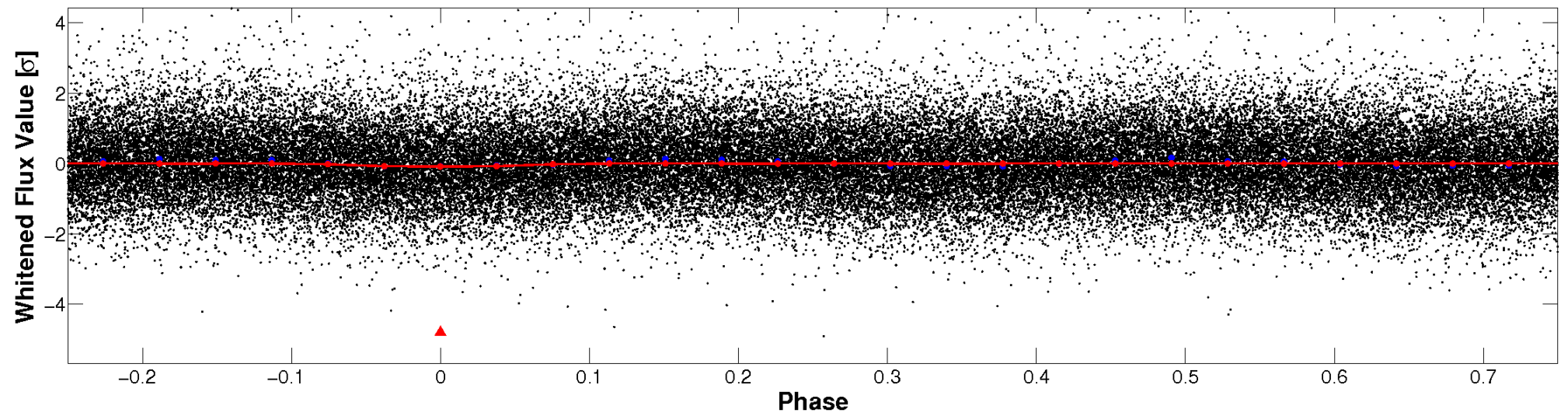


Non-Whitened Vs. Whitened Light Curve

Planet 1 : Phased Unwhitened Flux Time Series (Fit Epoch/Period)

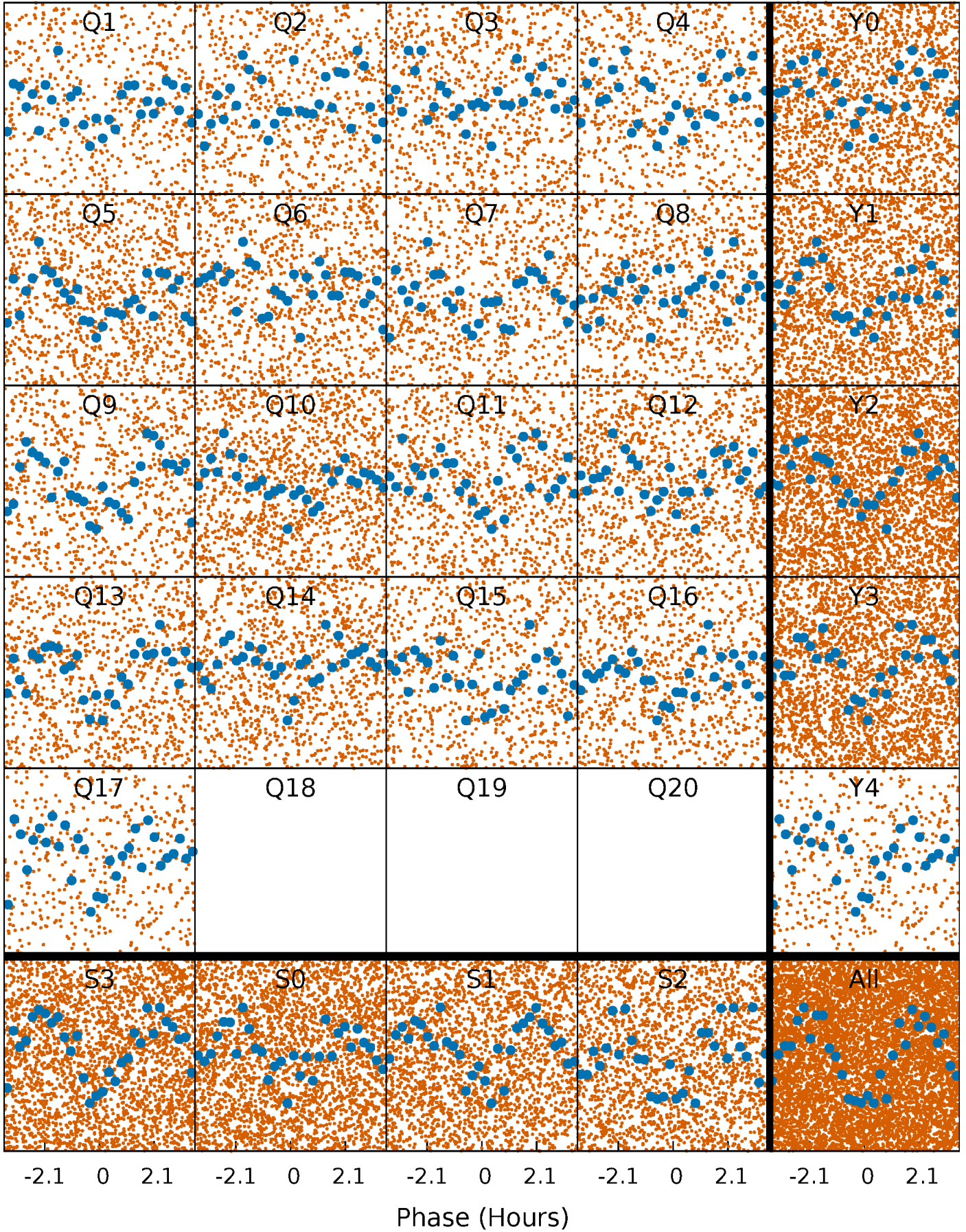


Planet 1 : Phased Whitened Flux Time Series (Fit Epoch/Period)



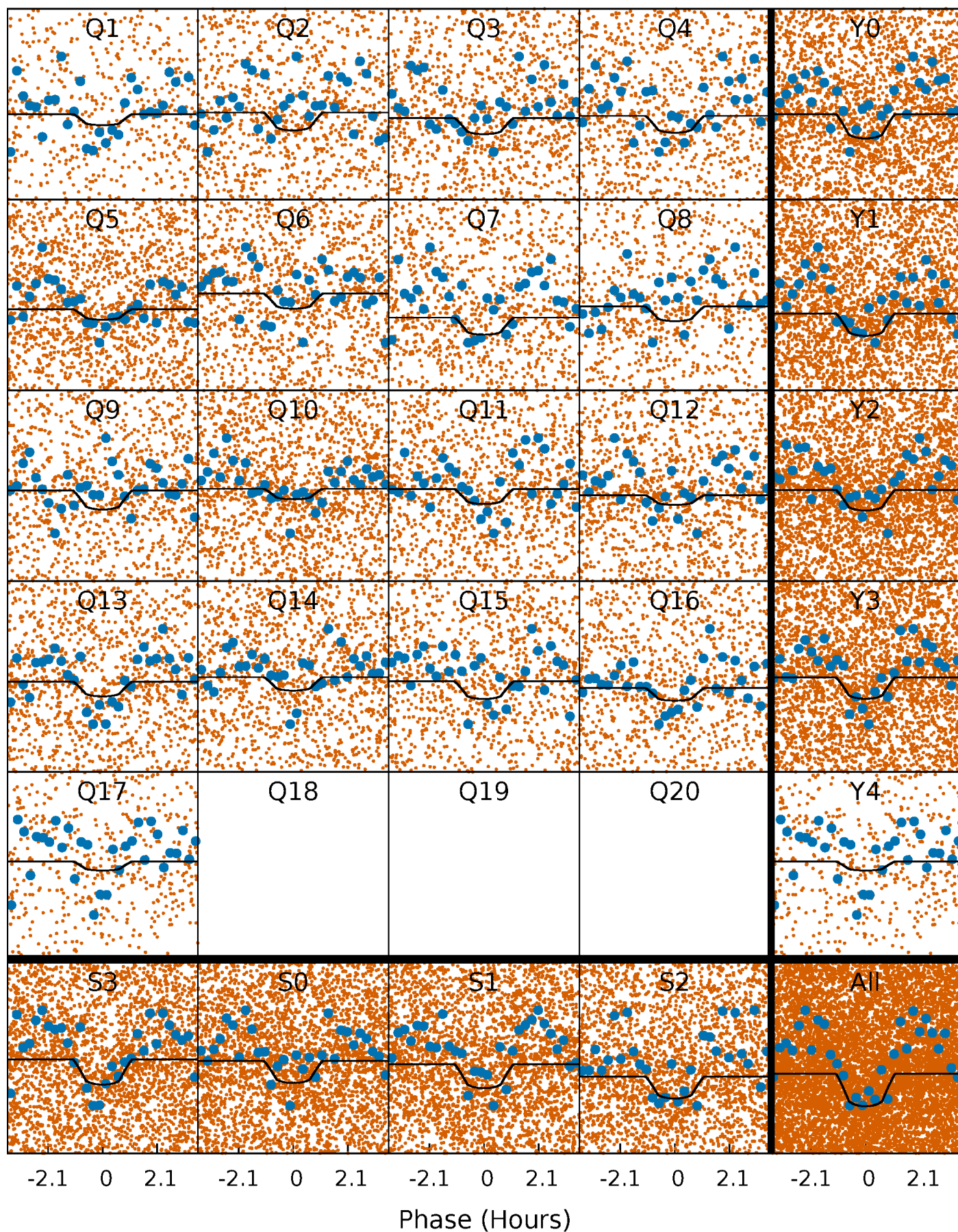
PDC Quarter-Phased Transit Curves

TCE 010128321-01 P= 0.541378 Days $T_0=131.953529$ (BKJD)



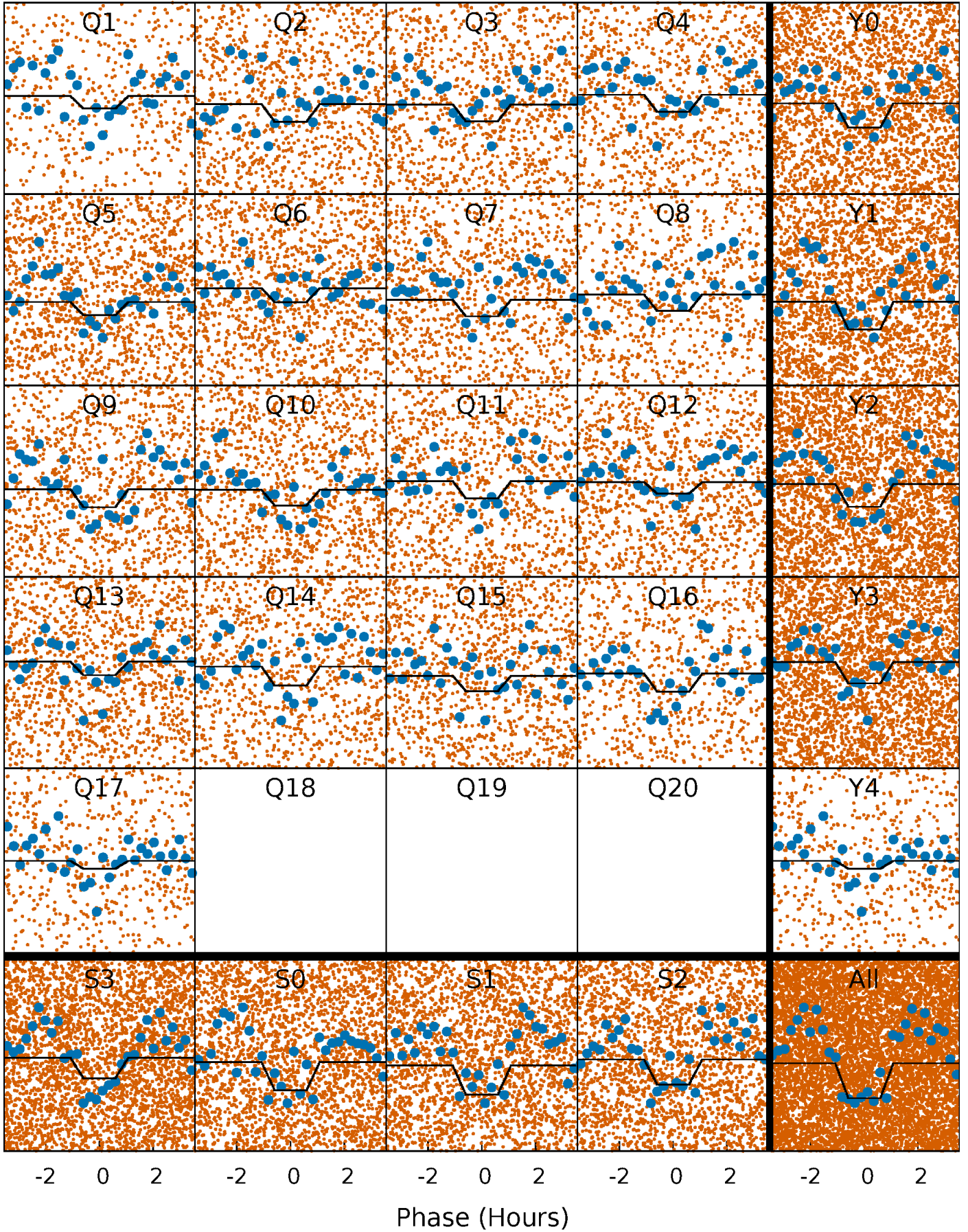
DV Quarter-Phased Transit Curves

TCE 010128321-01 P= 0.541378 Days $T_0=131.953529$ (BKJD)



Alt. Detrend Quarter-Phased Transit Curves

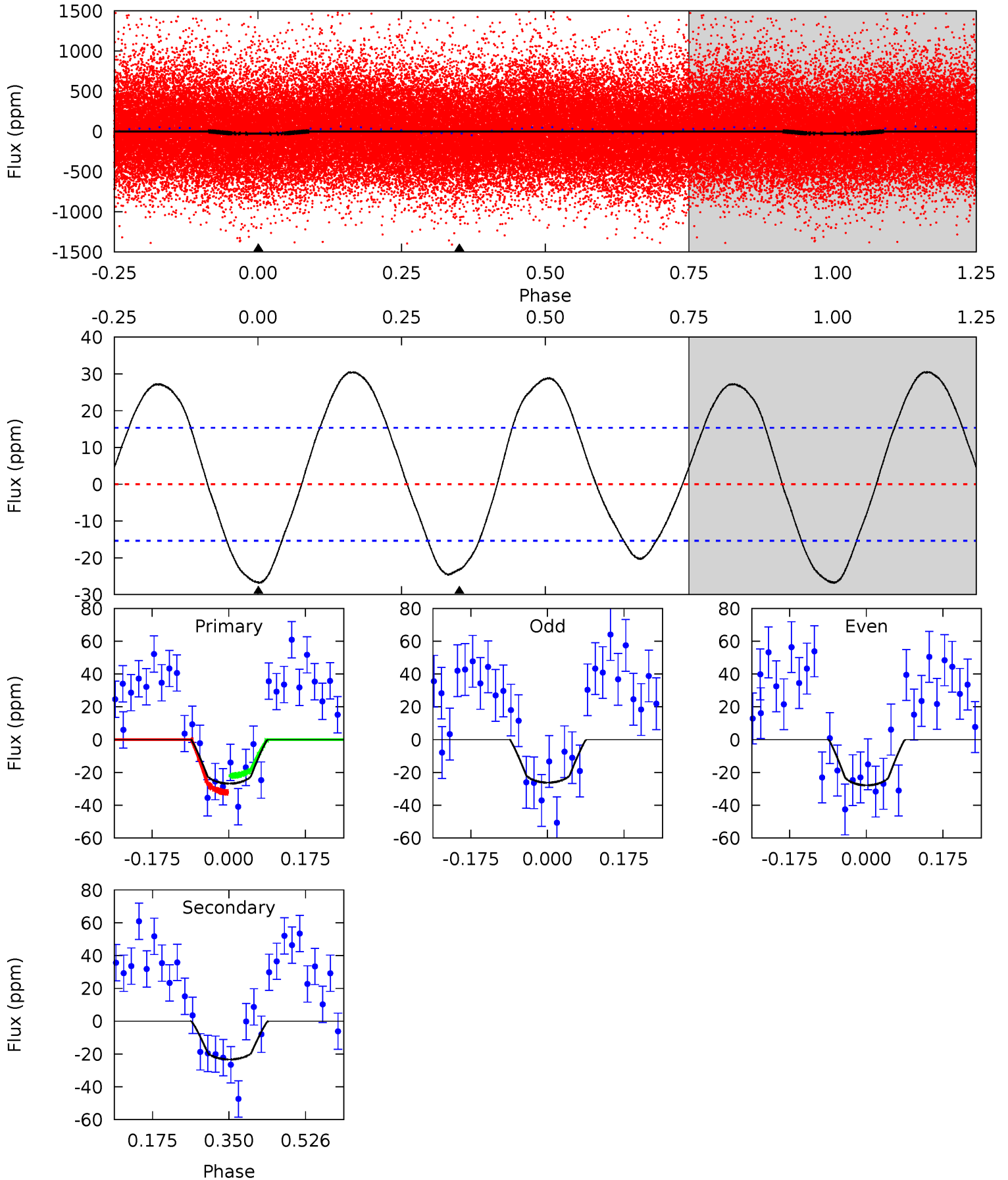
TCE 010128321-01 P= 0.541381 Days $T_0=131.953403$ (BKJD)



DV Model-Shift Uniqueness Test

010128321-01, P = 0.541378 Days, E = 131.412151 Days

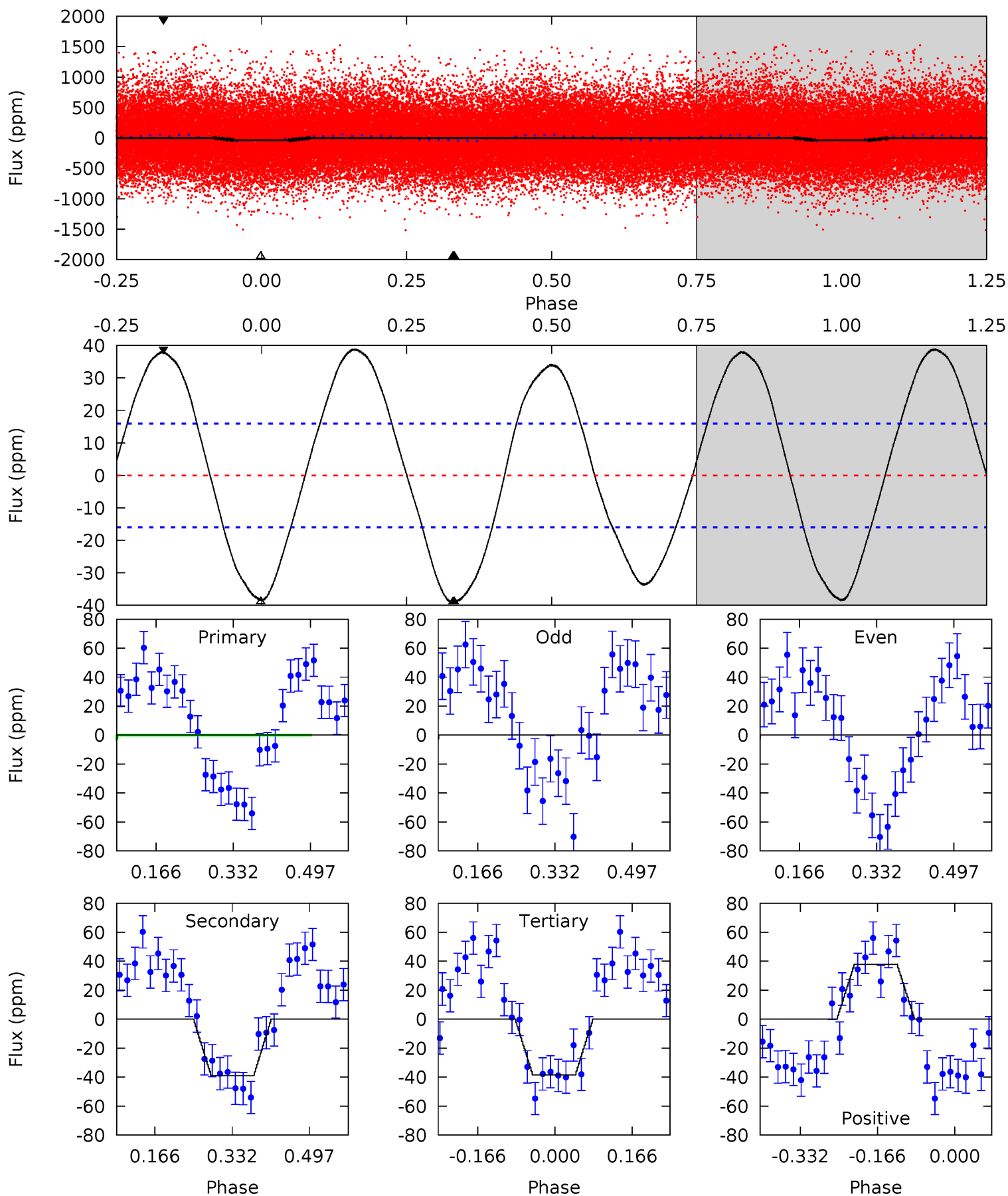
Pri	Sec	Ter	Pos	FA ₁	FA ₂	F _{Red}	Pri-Ter	Pri-Pos	Sec-Ter	Sec-Pos	Odd-Evn	DMM	Shape	TAT
7.76	6.75	0	0	4.45	1.36	4.52	7.76	7.76	6.75	6.75	0.24	0.71	0.53	1.48



Alt Model-Shift Uniqueness Test

010128321-01, P = 0.541381 Days, E = 131.412022 Days

Pri	Sec	Ter	Pos	FA ₁	FA ₂	F _{Red}	Pri-Ter	Pri-Pos	Sec-Ter	Sec-Pos	Odd-Evn	DMM	Shape	TAT
10.9	10.9	10.7	10.6	4.46	1.39	7.11	0.16	0.32	0.15	0.30	0.96	0.81	0.50	1.37



Stellar Parameters For KIC 010128321

	$T_{\text{eff}}(K)$	$\log(g)$	[Fe/H]	R (R_{\odot})	$M(M_{\odot})$	p_{\star} ($\text{g}\cdot\text{cm}^{-3}$)
	5790^{+161}_{-202}	$4.528^{+0.046}_{-0.196}$	$-0.020^{+0.250}_{-0.300}$	$0.900^{+0.258}_{-0.086}$	$0.998^{+0.102}_{-0.125}$	$1.926^{+0.386}_{-1.004}$
	+3%/-3%	+1%/-4%	+1250%/-1500%	+29%/-10%	+10%/-13%	+20%/-52%
Source	PHO1	KIC0	KIC0	DSEP		

KIC = Kepler Input Catalog; PHO = Photometry; SPE = Spectroscopy; AST = Asteroseismology
 TRA = Transits; DESP = Dartmouth Models; MULT = Multiple Models

Secondary Eclipse Parameters for KIC 010128321-01 / KOI

Detrend	Depth (ppm)	R_p (R_{\oplus})	T_{max} (K)	T_{obs} (K)	A_{obs}
DV	-23 ± 3	$0.72^{+0.56}_{-0.46}$	3023^{+220}_{-135}	4818^{+3469}_{-1034}	$4.124^{+29.631}_{-2.858}$
Alt.	-39 ± 4	$0.74^{+0.57}_{-0.47}$	3041^{+221}_{-151}	5366^{+3954}_{-1187}	$6.283^{+42.285}_{-4.216}$

T_{max} = Theoretical Maximum Planetary Temperature

T_{obs} = Observed Planetary Temperature (Assuming $A=0.3$)

A_{obs} = Observed Albedo (Assuming $T=0$)

If a secondary eclipse is present, the system is likely an EB if $T_{obs} \gg T_{max}$ AND $A_{obs} \gg 1.0$

DV Centroid Data

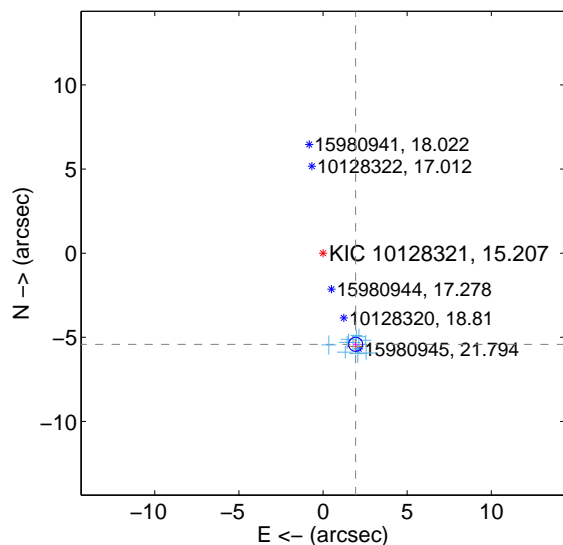
Supplemental centroid analysis for 010128321-01. Kepler magnitude: 15.21. Transit SNR 6.37

There are 11 quarters with good PRF difference image offsets

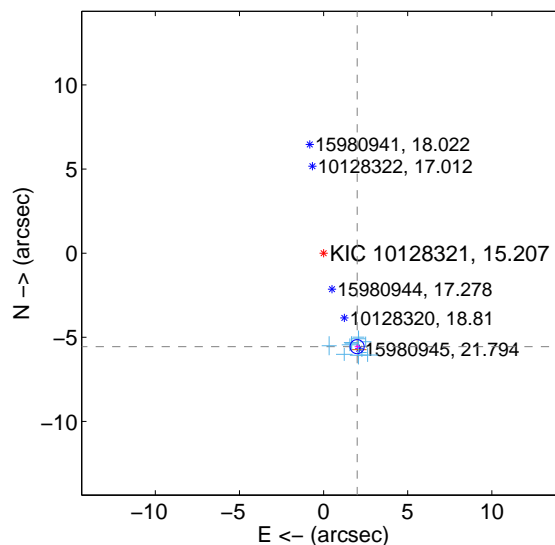
The direct PRF centroid is offset from the target star catalog position by about 0.05 arcsec

	Distance in arcsec	Distance / σ	Δ RA	Δ Dec
PRF-fit source offset from OOT	5.754 ± 0.139	41.32	-1.937 ± 0.146	-5.418 ± 0.138
PRF-fit source offset from KIC position	5.903 ± 0.139	42.38	-1.994 ± 0.146	-5.556 ± 0.138
photometric centroid source offset	6.01 ± 1.99	3.02	-6.01 ± 1.99	-0.29 ± 2.04

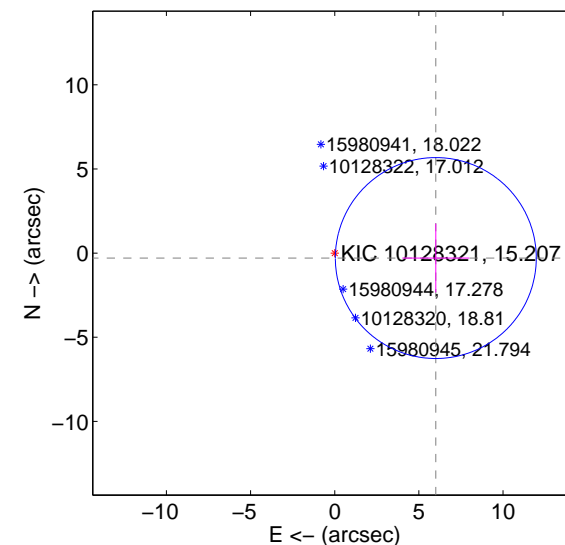
offset from difference PRF-fit to OOT PRF-fit



offset from difference PRF-fit to KIC position

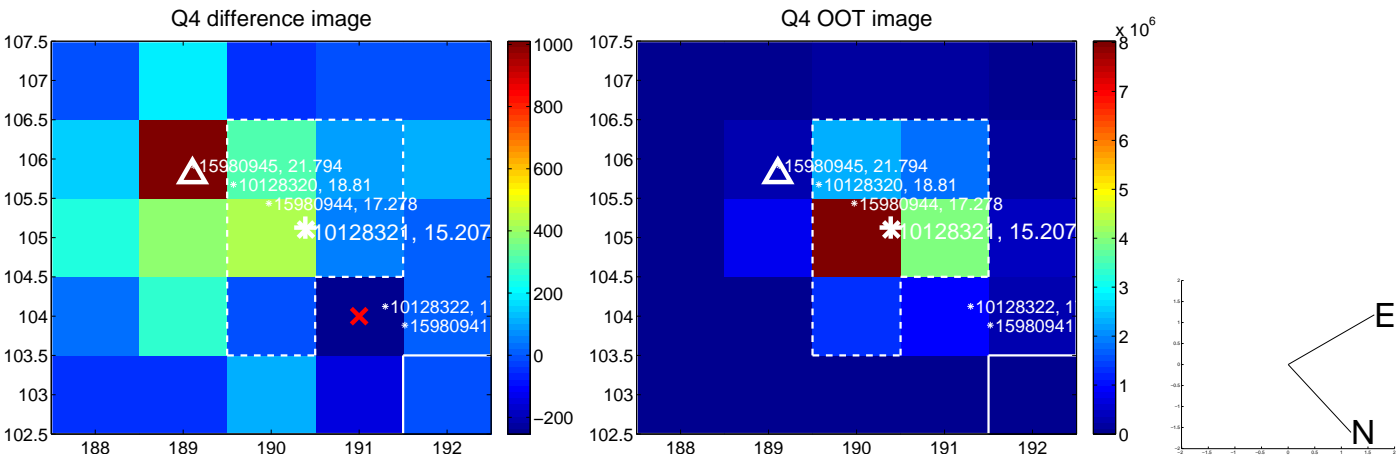
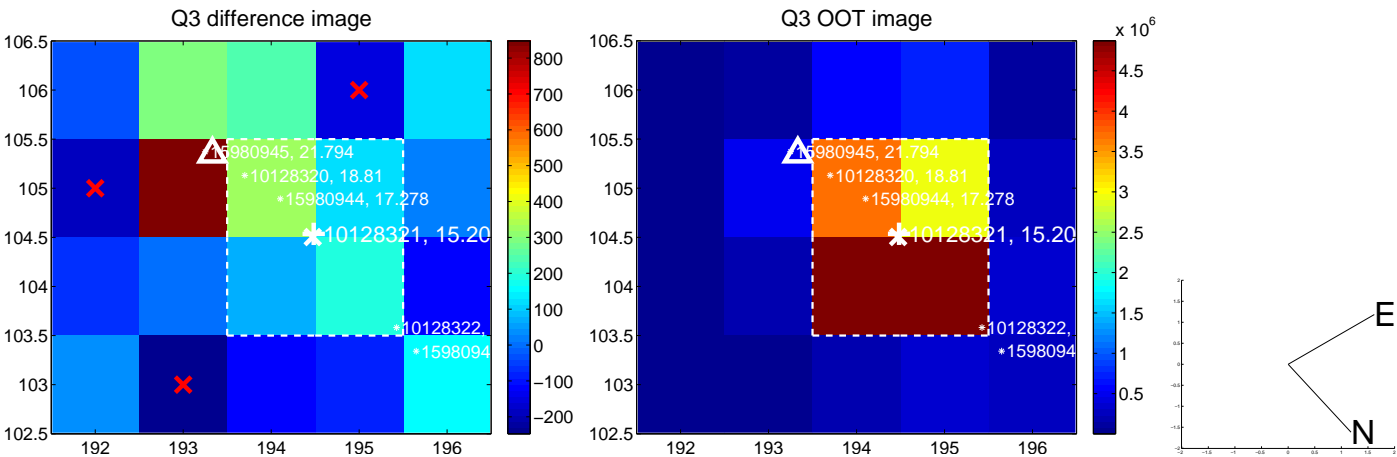
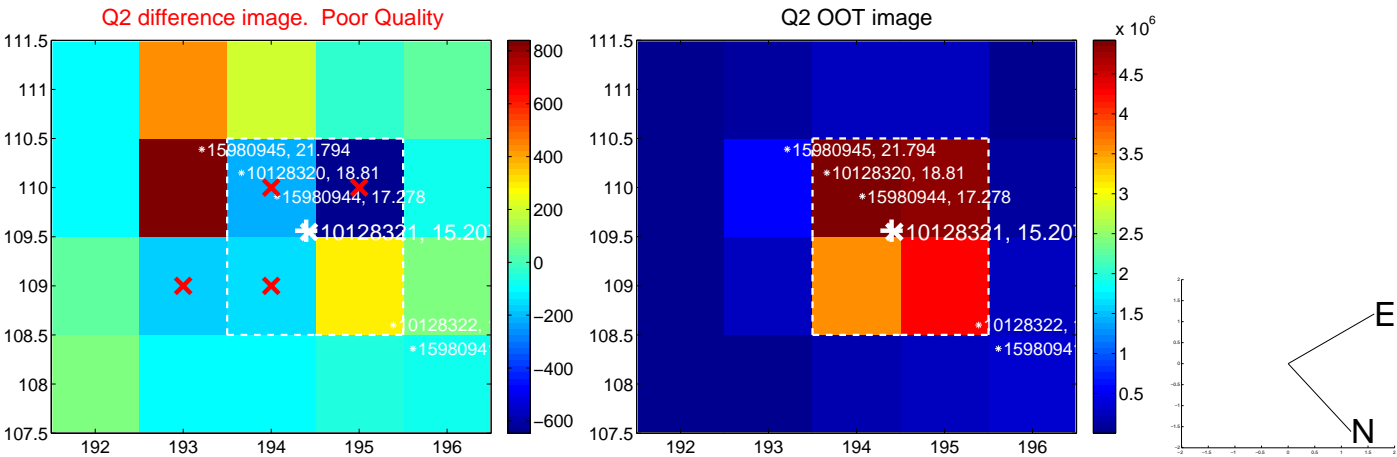
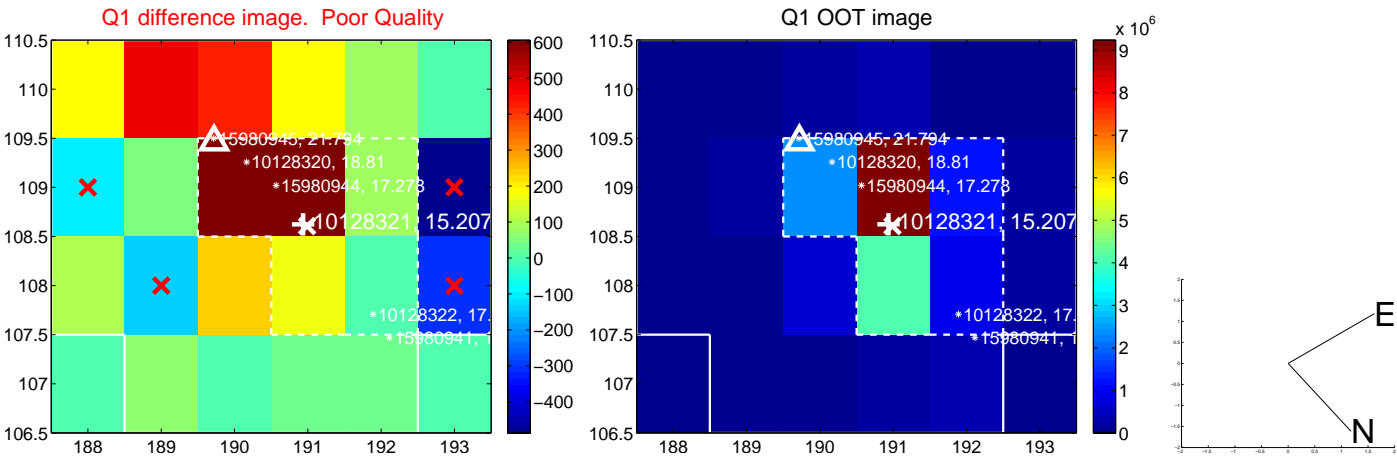


offset from photometric centroids

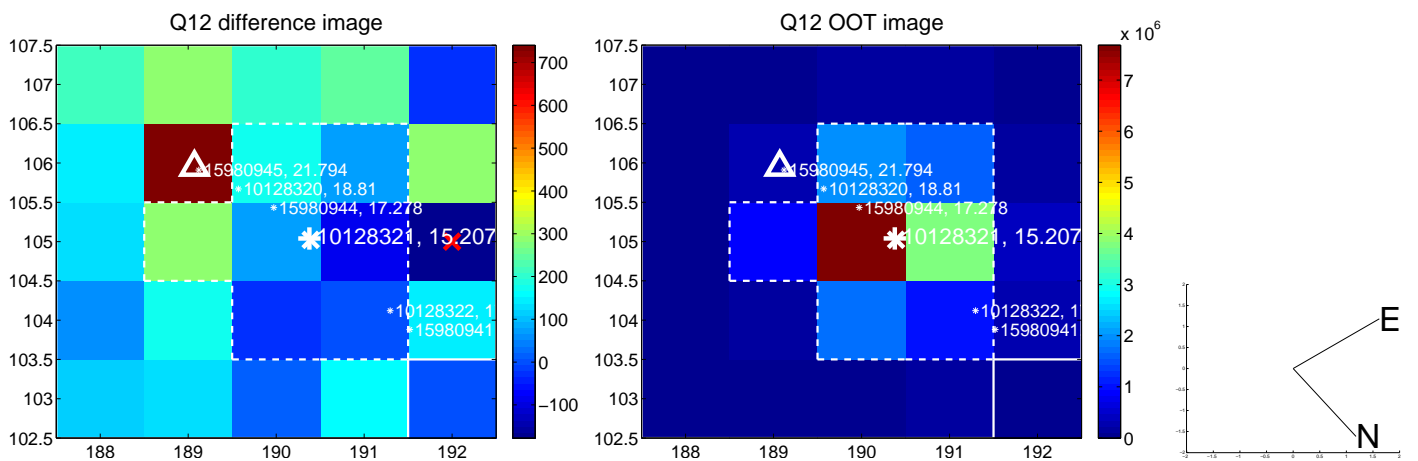
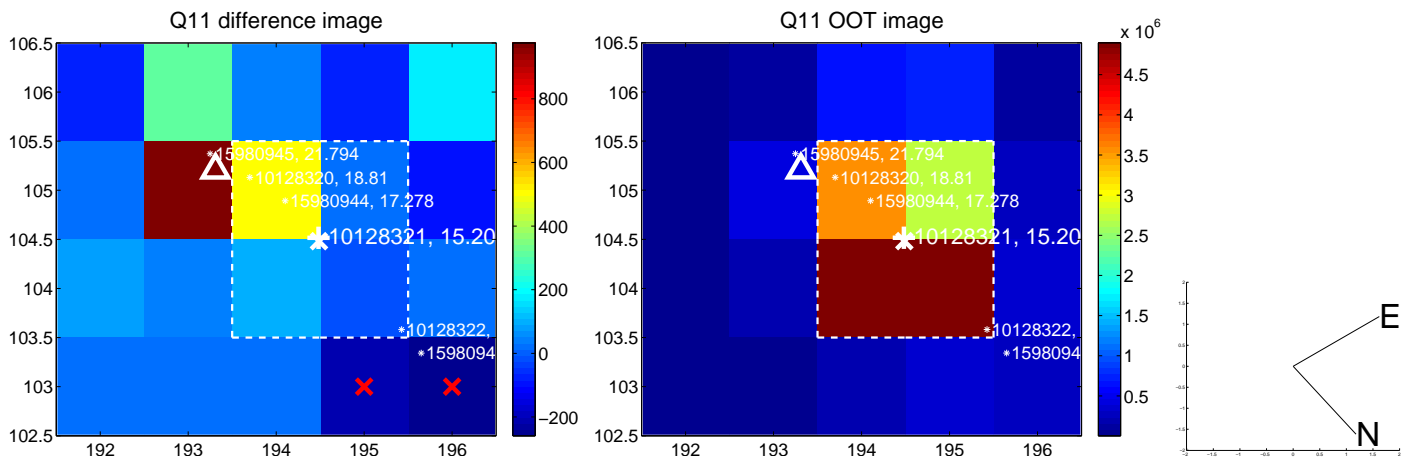
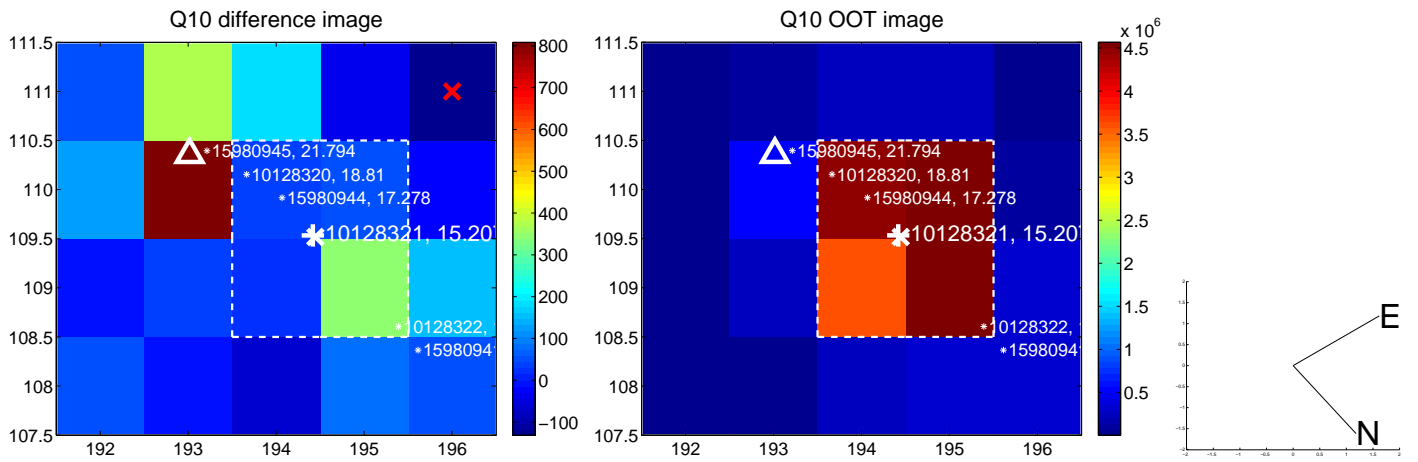
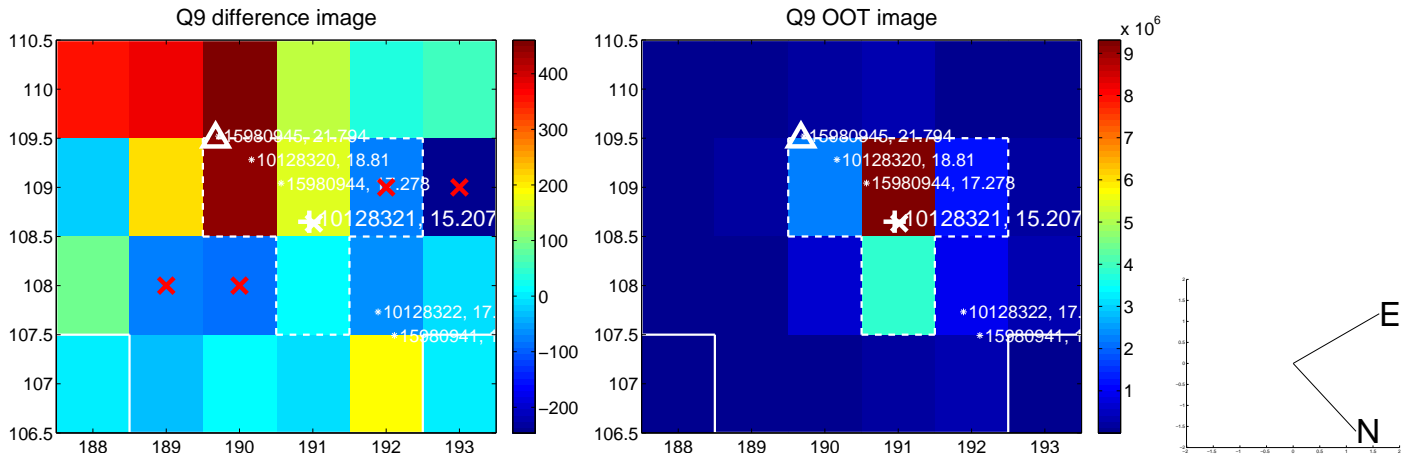


Centroid source offsets from the target star reconstructed from PRF and photometric centroids. **Sky blue crosses: good quarterly centroid offsets; Vermillion crosses: bad quarterly centroid offsets**; magenta cross: average over quarters. Length of the crosses: one- σ uncertainty. Blue circle: three- σ . Red *: target star. Blue *: Other stars. Text next to a star gives its KIC ID and kepmag. KIC IDs > 15,000,000 are from the UKIRT catalog.

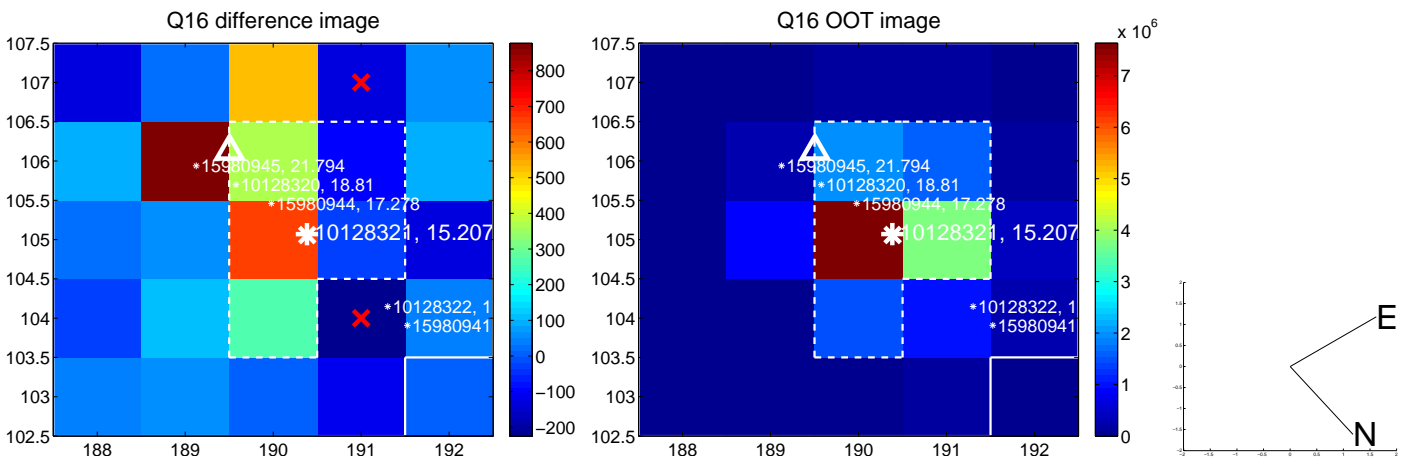
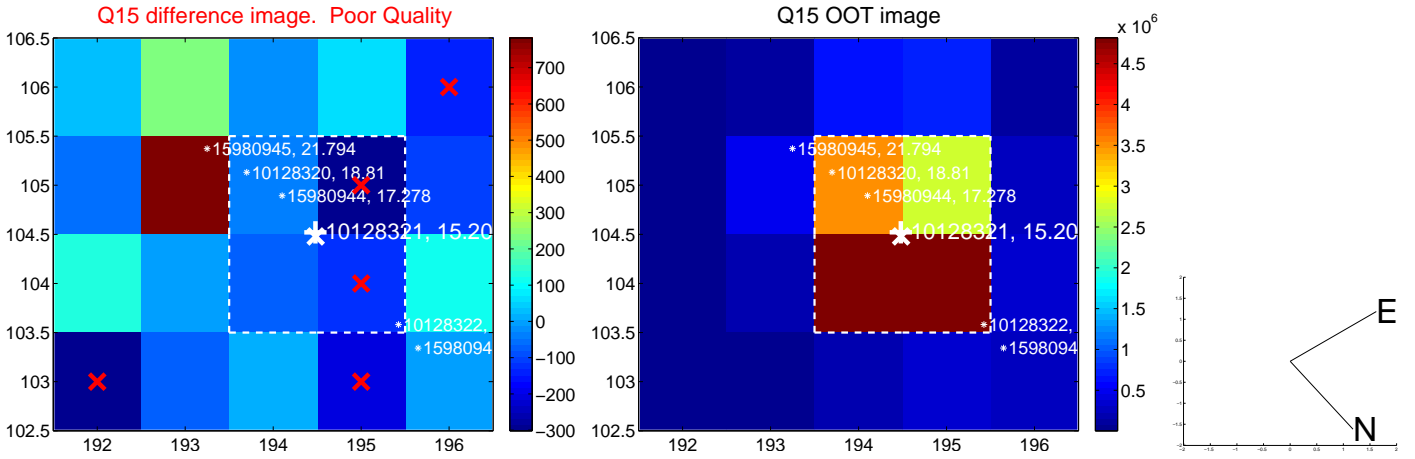
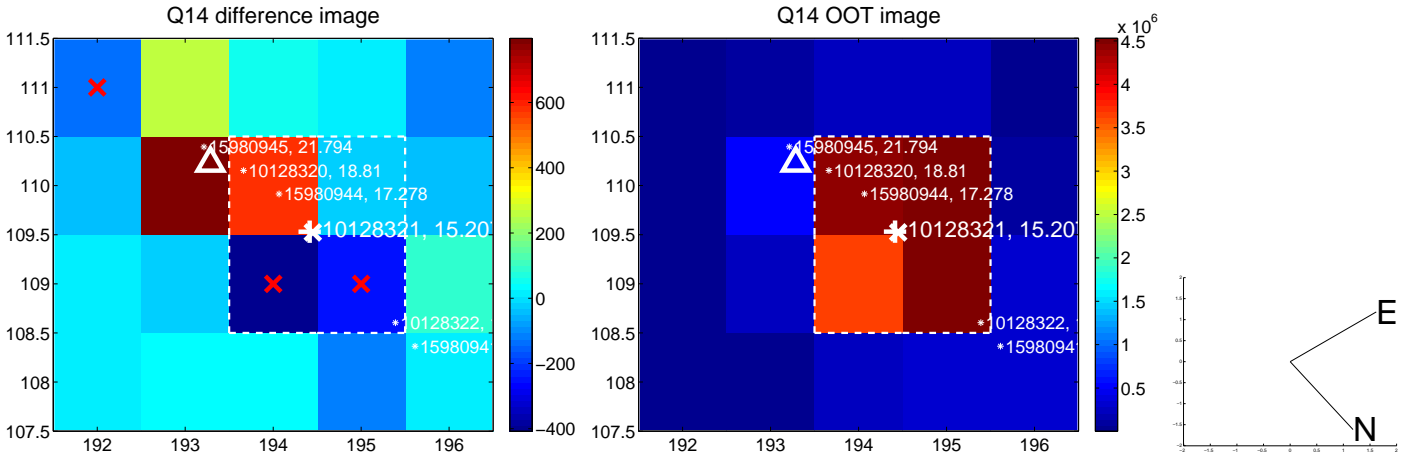
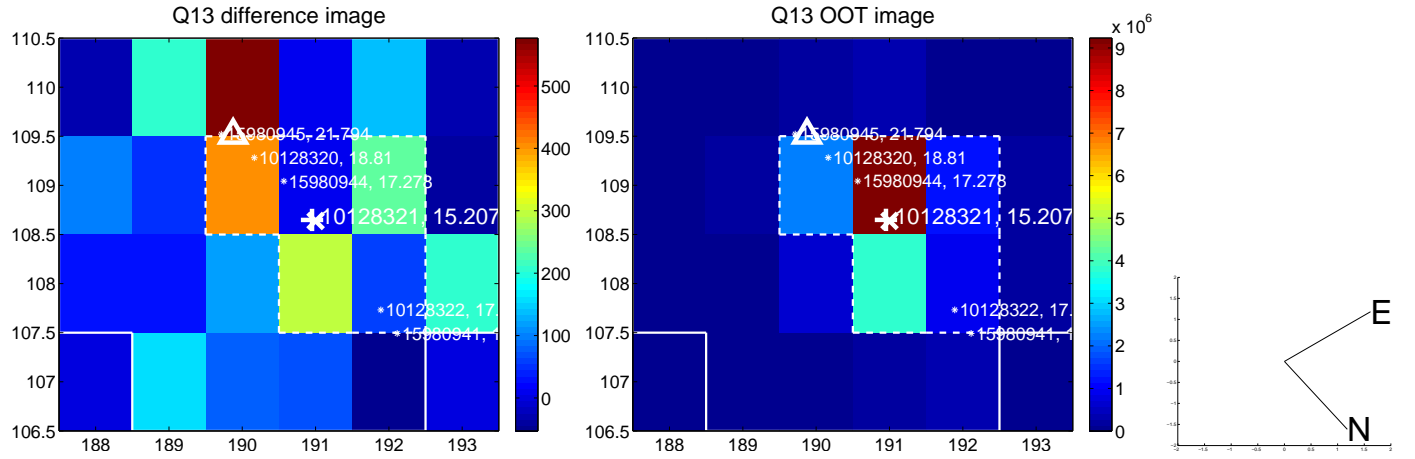
white \times : KIC target position; +: OOT centroid; \triangle : difference centroid. red \times : large negative pixel value.



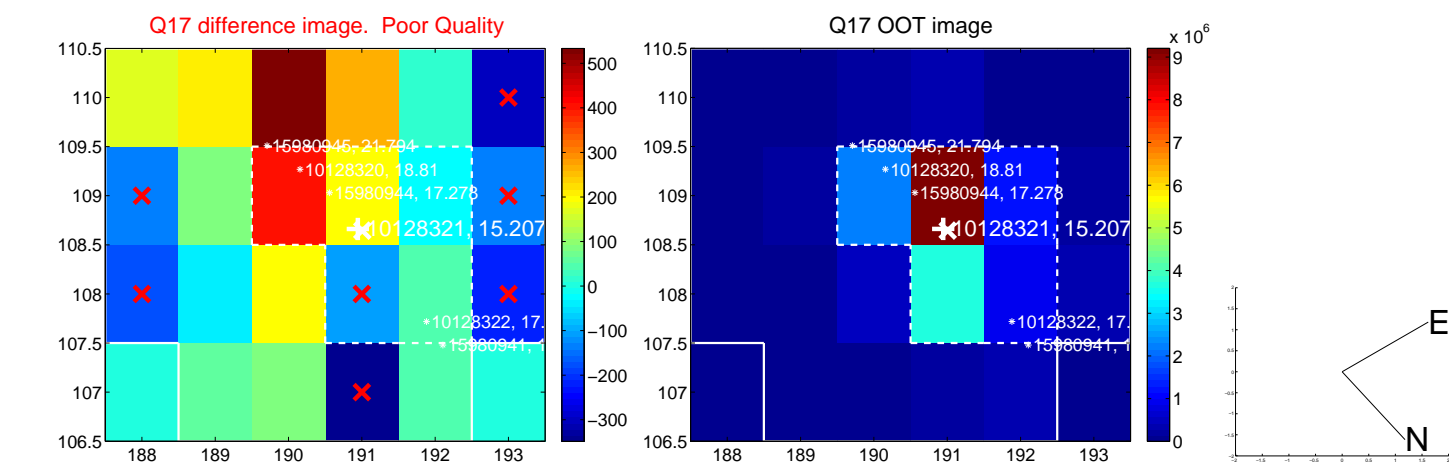
white \times : KIC target position; +: OOT centroid; \triangle : difference centroid. red \times : large negative pixel value.



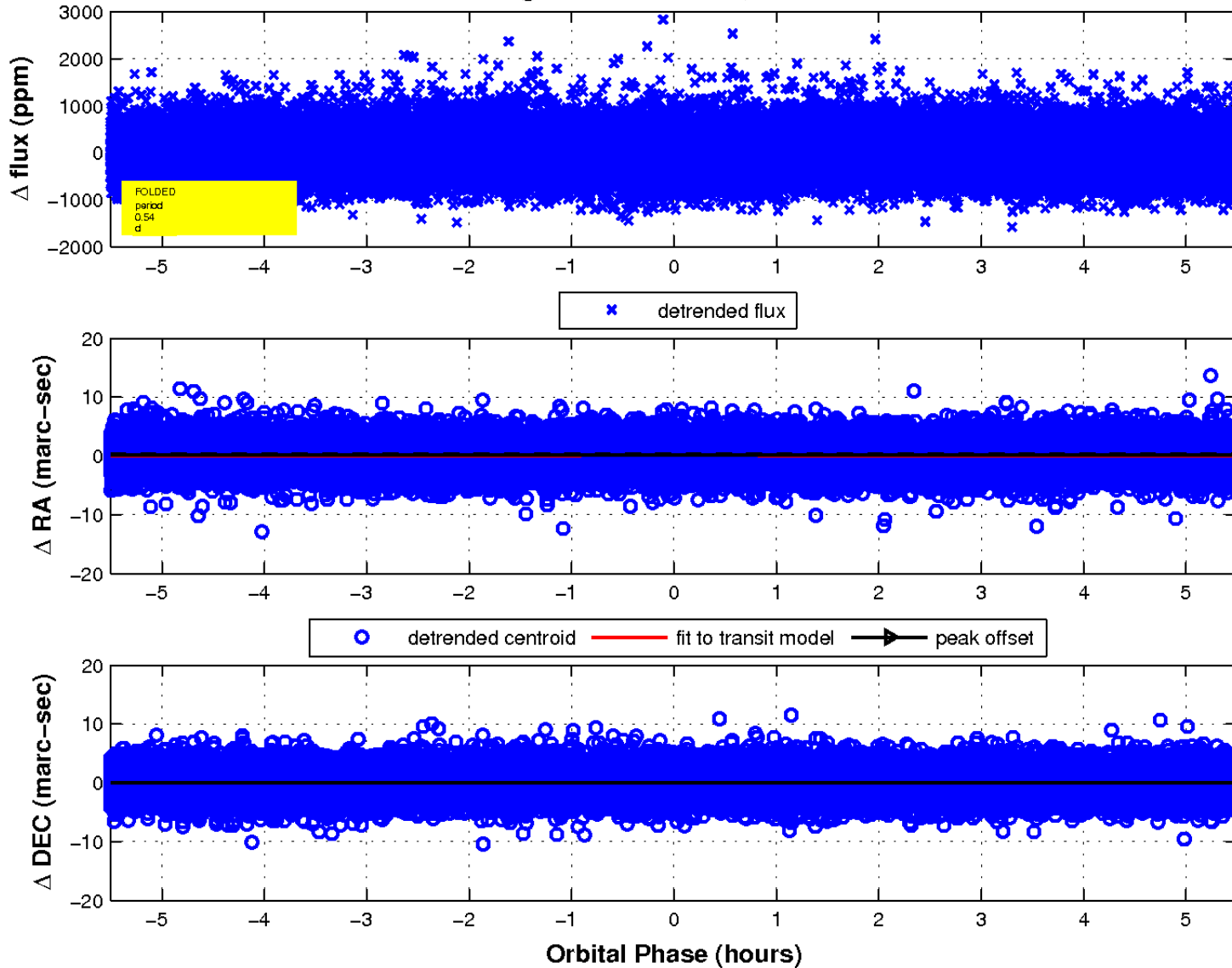
white \times : KIC target position; +: OOT centroid; \triangle : difference centroid. red \times : large negative pixel value.



white \times : KIC target position; $+$: OOT centroid; \triangle : difference centroid. red \times : large negative pixel value.



fluxWeightedCentroids, Planet 1 of 1



UKIRT Image

Declination

