

# KIC 009898364

## Q1-17 DR25 TCE Parameters

TCE	Run Type	KOI?	Period (Days)	Epoch (BKJD)	Depth (ppm)	Duration (Hours)	MES	SNR	$R_{\star}$ ( $R_{\odot}$ )	$T_{\star}$ (K)	$R_p$ ( $R_{\oplus}$ )	$S_p$ ( $S_{\oplus}$ )
009898364-01	OBS	1579.01	7.132362	134.472187	737.0	2.923	80.6	85.9	1.93	7530	8.61	1470.51

## Robovetter Results

TCE	Run Type	Disp	Score	N	S	C	E	Comments
009898364-01	OBS	FP	0.00	0	0	1	0	CENT_UNRESOLVED_OFFSET

**Notes:** OBS = Observed. INJ = Injected. INV = Inverted. SCR = Scrambled.

N = Not Transit-Like. S = Stellar Eclipse. C = Centroid Offset. E = Ephemeris Match.

See [http://exoplanetarchive.ipac.caltech.edu/docs/API\\_kepcandidate\\_columns.html#proj\\_disp\\_col](http://exoplanetarchive.ipac.caltech.edu/docs/API_kepcandidate_columns.html#proj_disp_col) for comment definitions.

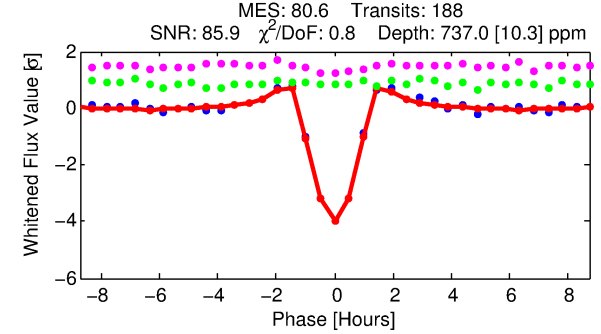
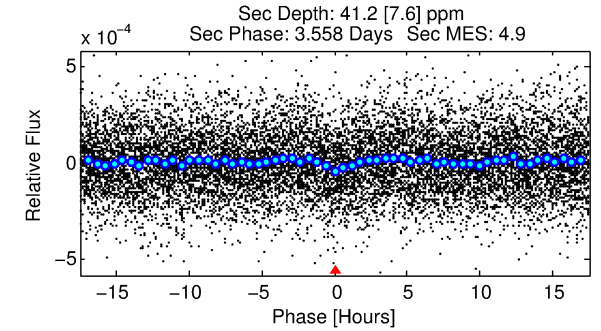
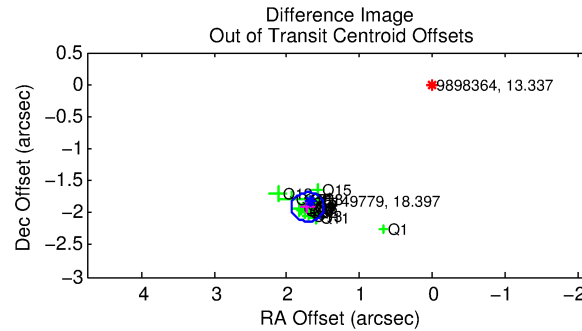
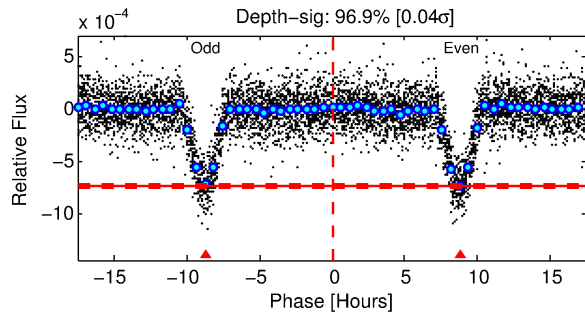
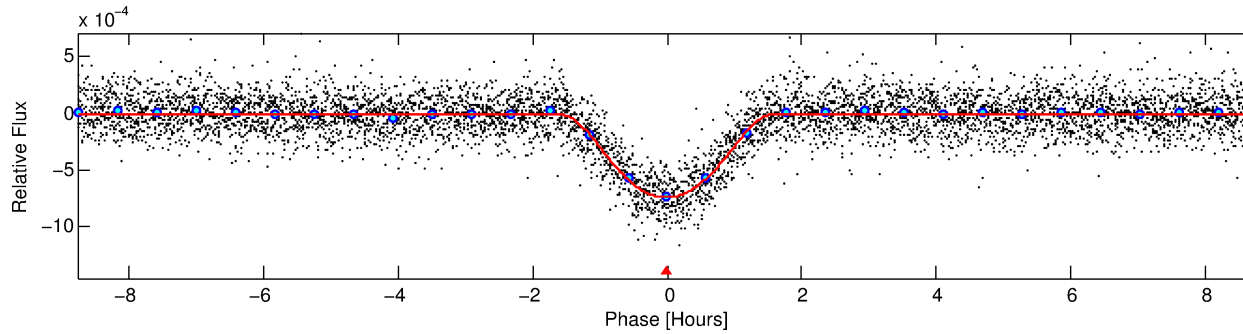
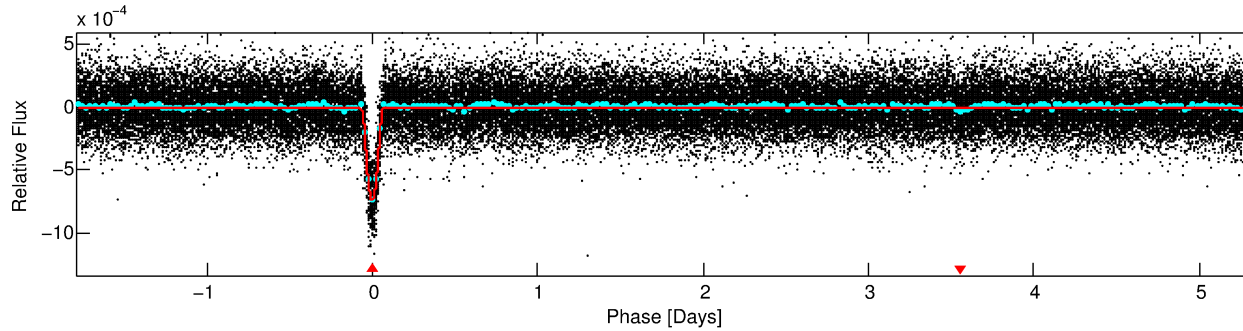
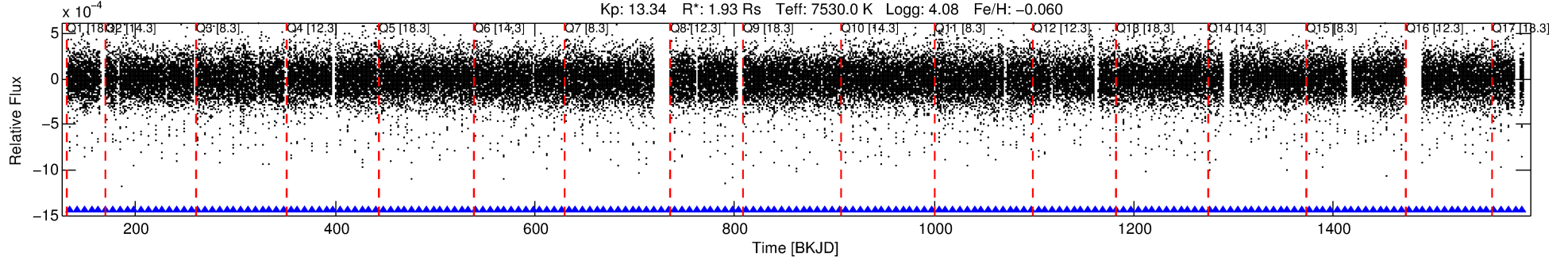
## Ephemeris Match Information For 009898364-01

No Significant Match Found

# DV One-Page Summary

KIC: 9898364 Candidate: 1 of 1 Period: 7.132 d  
KOI: K01579.01 Corr: 0.998

Kp: 13.34 R\*: 1.93 Rs Teff: 7530.0 K Logg: 4.08 Fe/H: -0.060



## DV Fit Results:

Period = 7.13236 [0.00001] d  
Epoch = 134.4722 [0.0006] BKJD  
Rp/R\* = 0.0409 [0.0089]  
a/R\* = 6.02 [0.41]  
b = 0.99 [0.01]  
Seff = 1470.51 [539.47]  
Teq = 1579 [145] K  
Rp = 8.61 [3.03] Re  
a = 0.0854 [0.0195] AU  
Ag = 2.23 [1.29] [0.96σ]  
Teffp = 2984 [375] K [3.49σ]

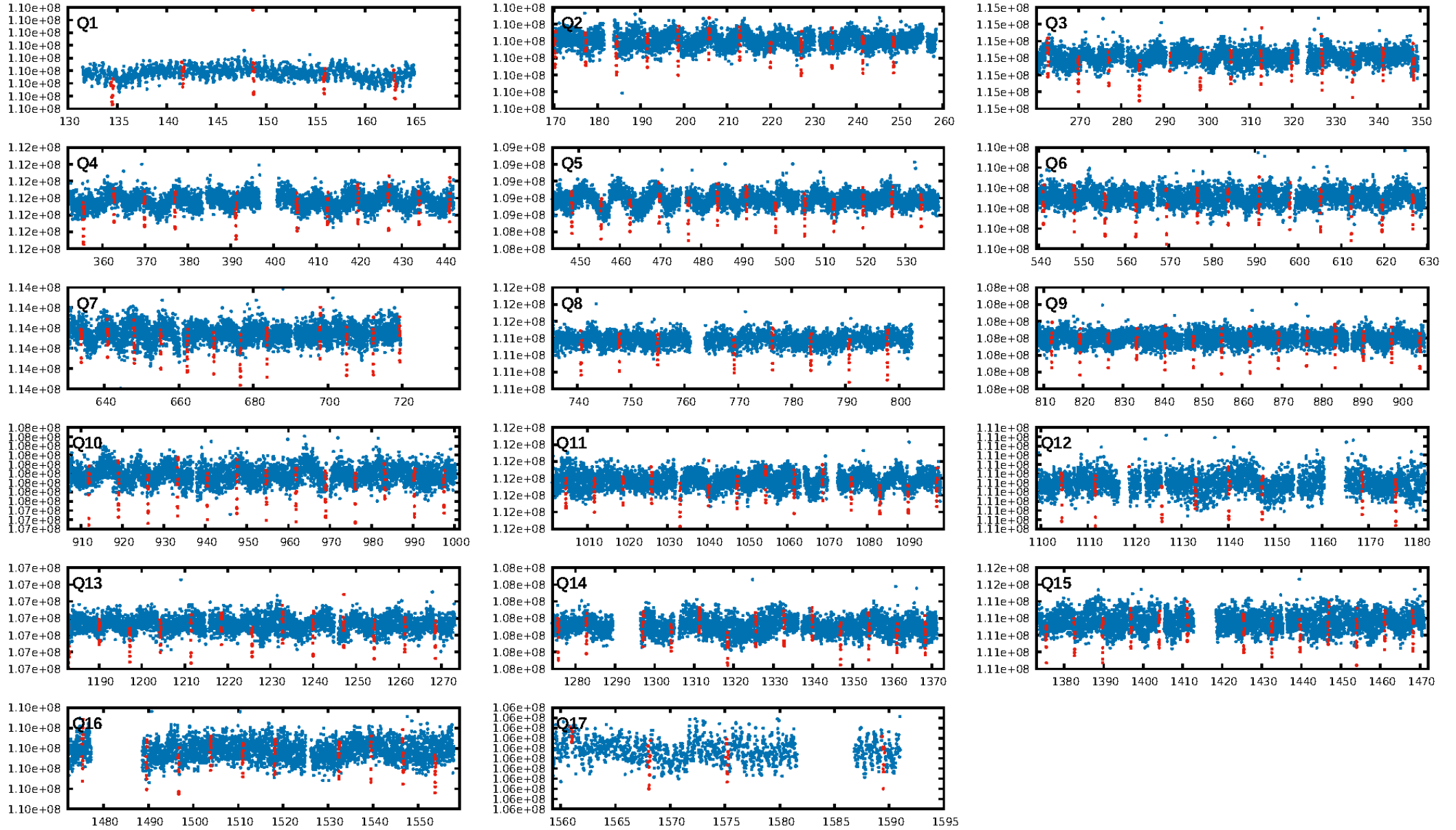
## DV Diagnostic Results:

ShortPeriod-sig: N/A  
LongPeriod-sig: N/A  
ModelChiSquare2-sig: 99.9%  
ModelChiSquareGof-sig: 100.0%  
Bootstrap-pfa: 0.00e+00  
RollingBand-fgt: 1.00 [179/179]  
GhostDiagnostic-chr: 3.63  
Centroid-sig: 0.0%  
Centroid-so: 2.674 arcsec [27.05σ]  
OotOffset-rm: 2.567 arcsec [34.10σ]  
KicOffset-rm: 2.583 arcsec [34.04σ]  
OotOffset-st: 4/4/4/5 [17]  
KicOffset-st: 4/4/4/5 [17]  
DiffImageQuality-fgm: 1.00 [17/17]  
DiffImageOverlap-fno: 1.00 [17/17]

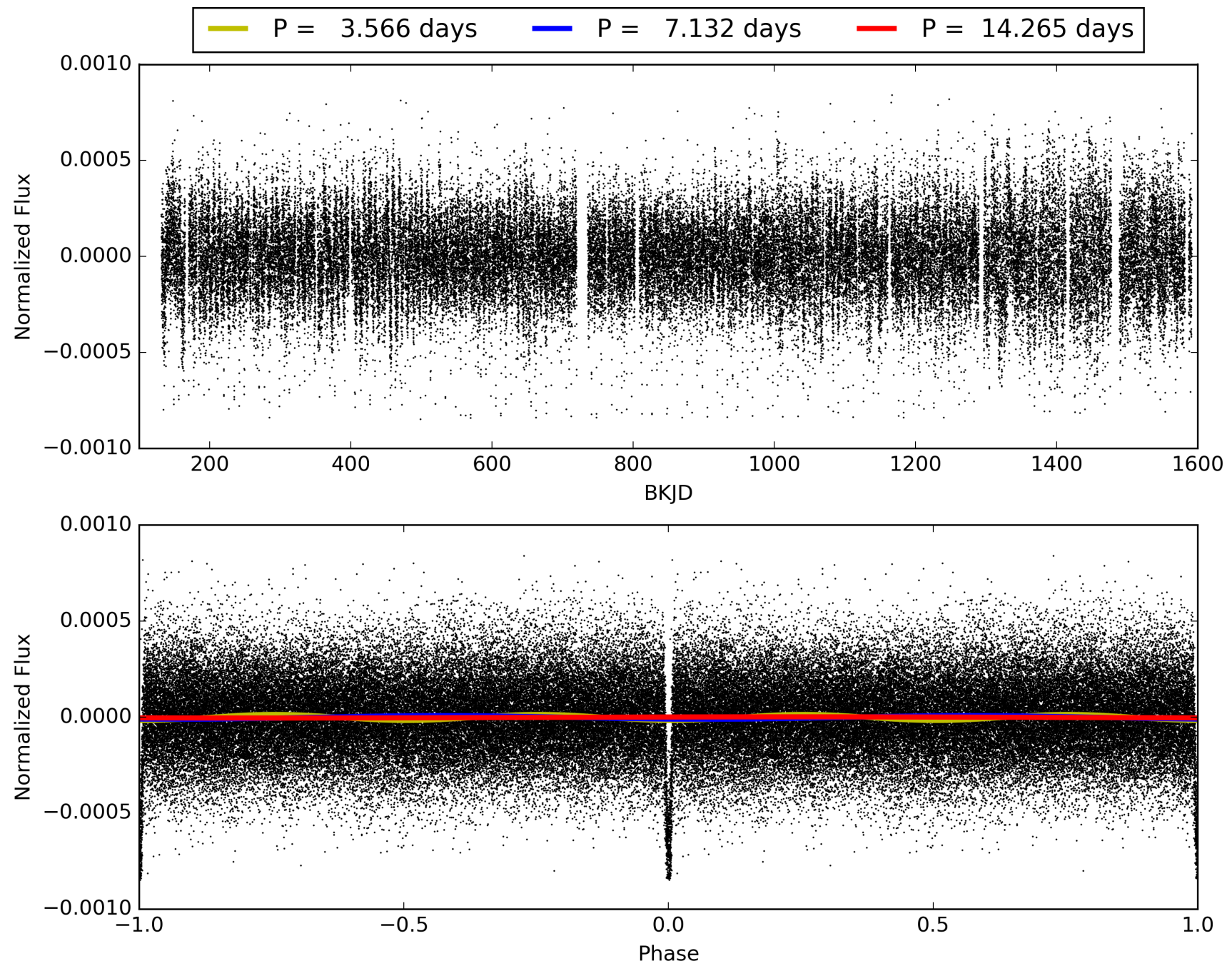
Software Revision: svn-ssh://murzim/repo/soc/tags/release/9.3.42@60958 -- Date Generated: 29-Jan-2016 17:57:19 Z

This Data Validation Report Summary was produced in the Kepler Science Operations Center Pipeline at NASA Ames Research Center

# TCE 009898364-01, PDC Light Curves

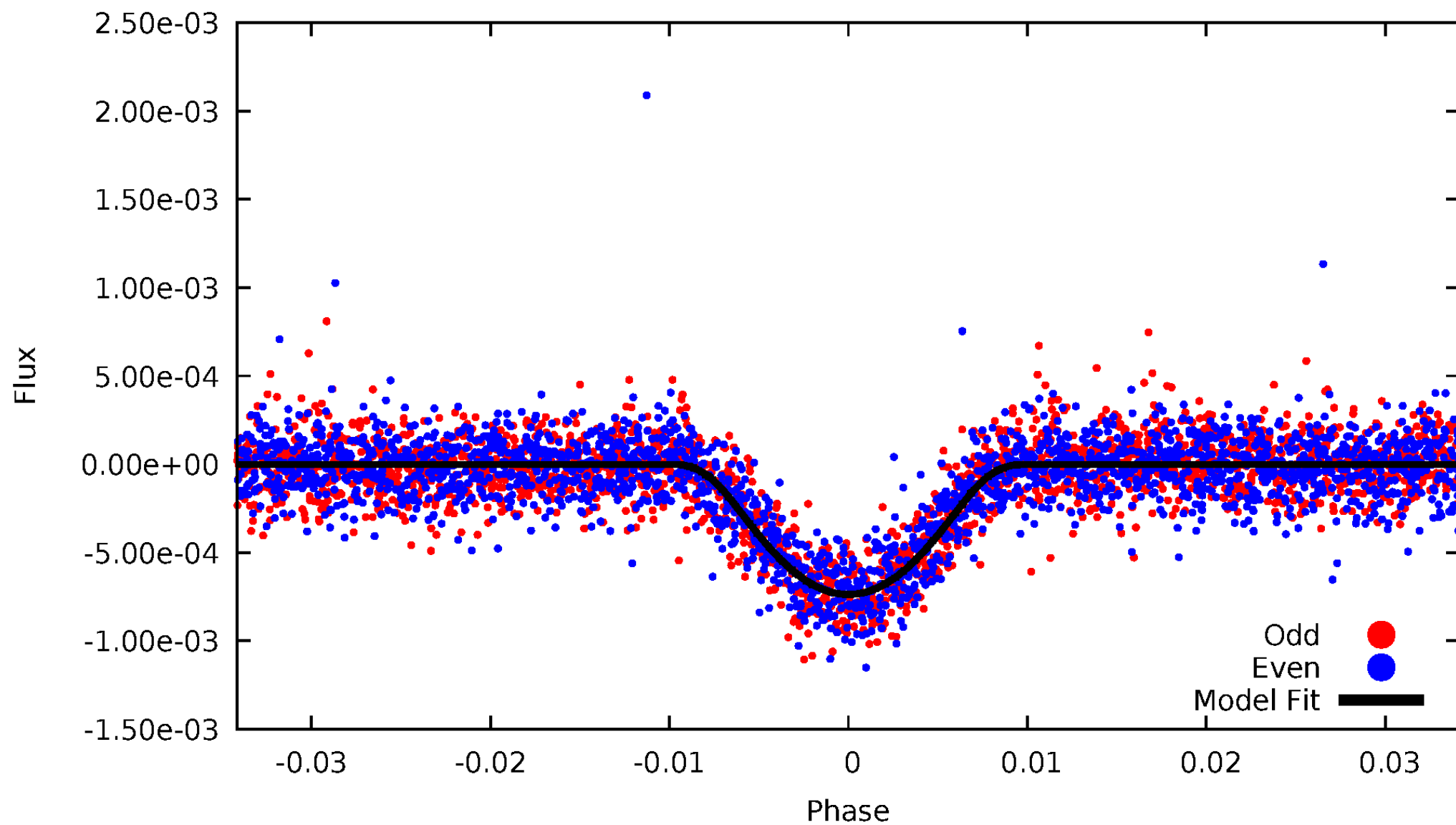


TCE 009898364-01



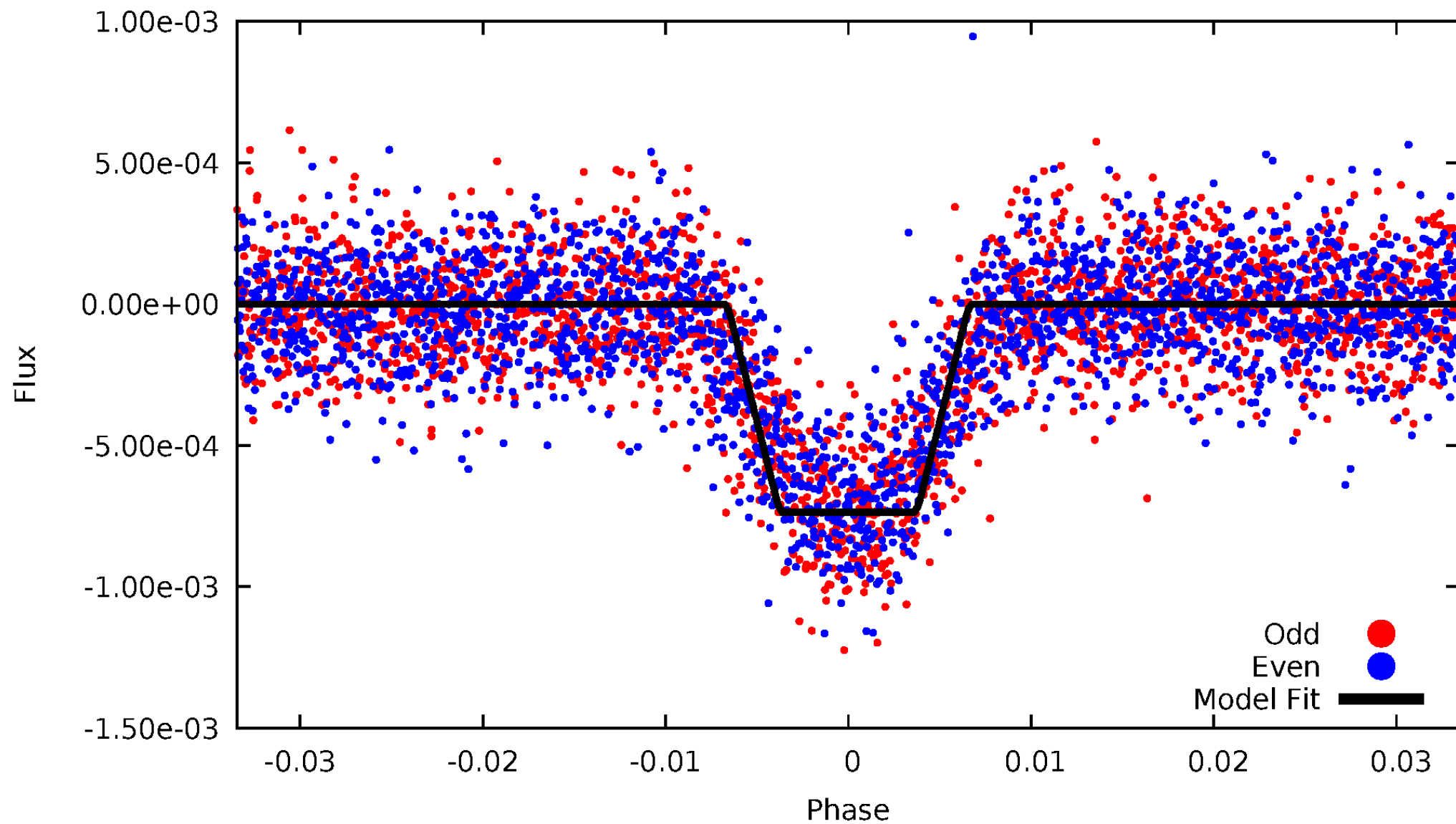
# DV Odd/Even

TCE 009898364-01



# ALT Odd/Even

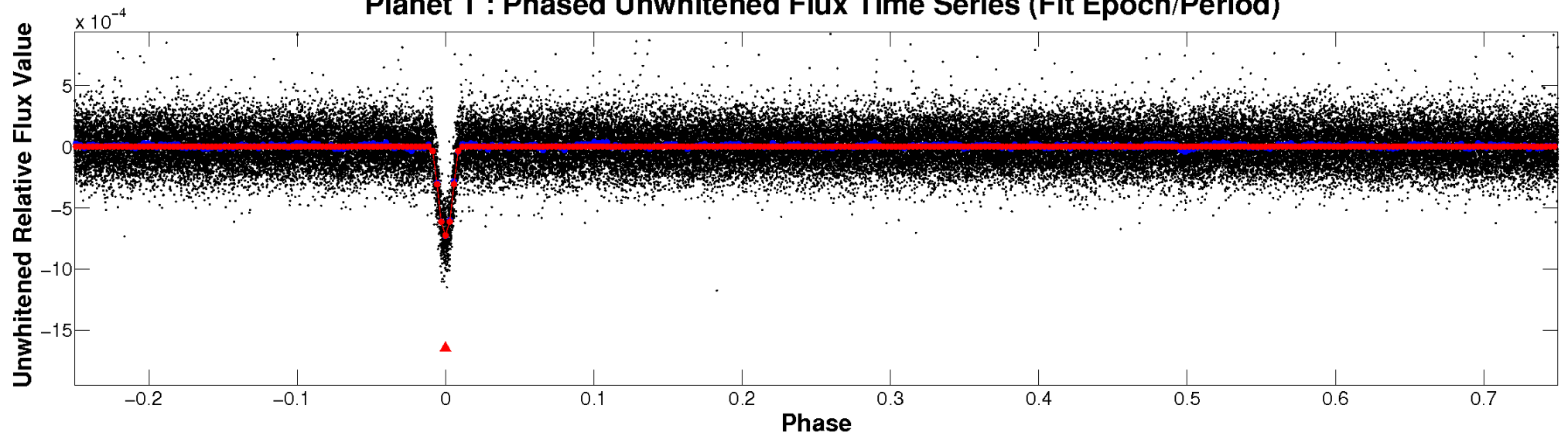
TCE 009898364-01



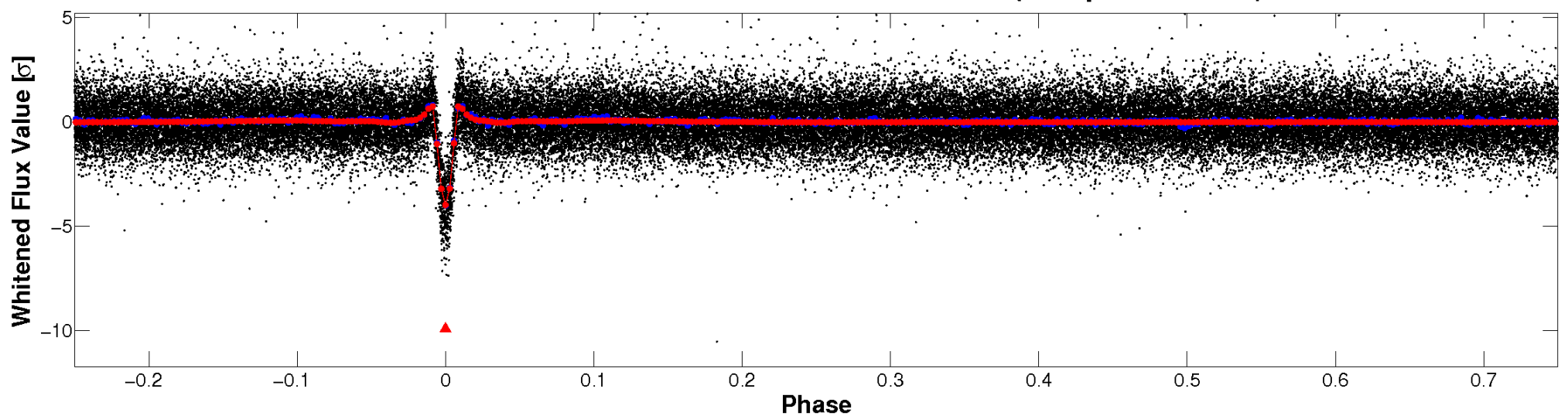


# Non-Whitened Vs. Whitened Light Curve

**Planet 1 : Phased Unwhitened Flux Time Series (Fit Epoch/Period)**

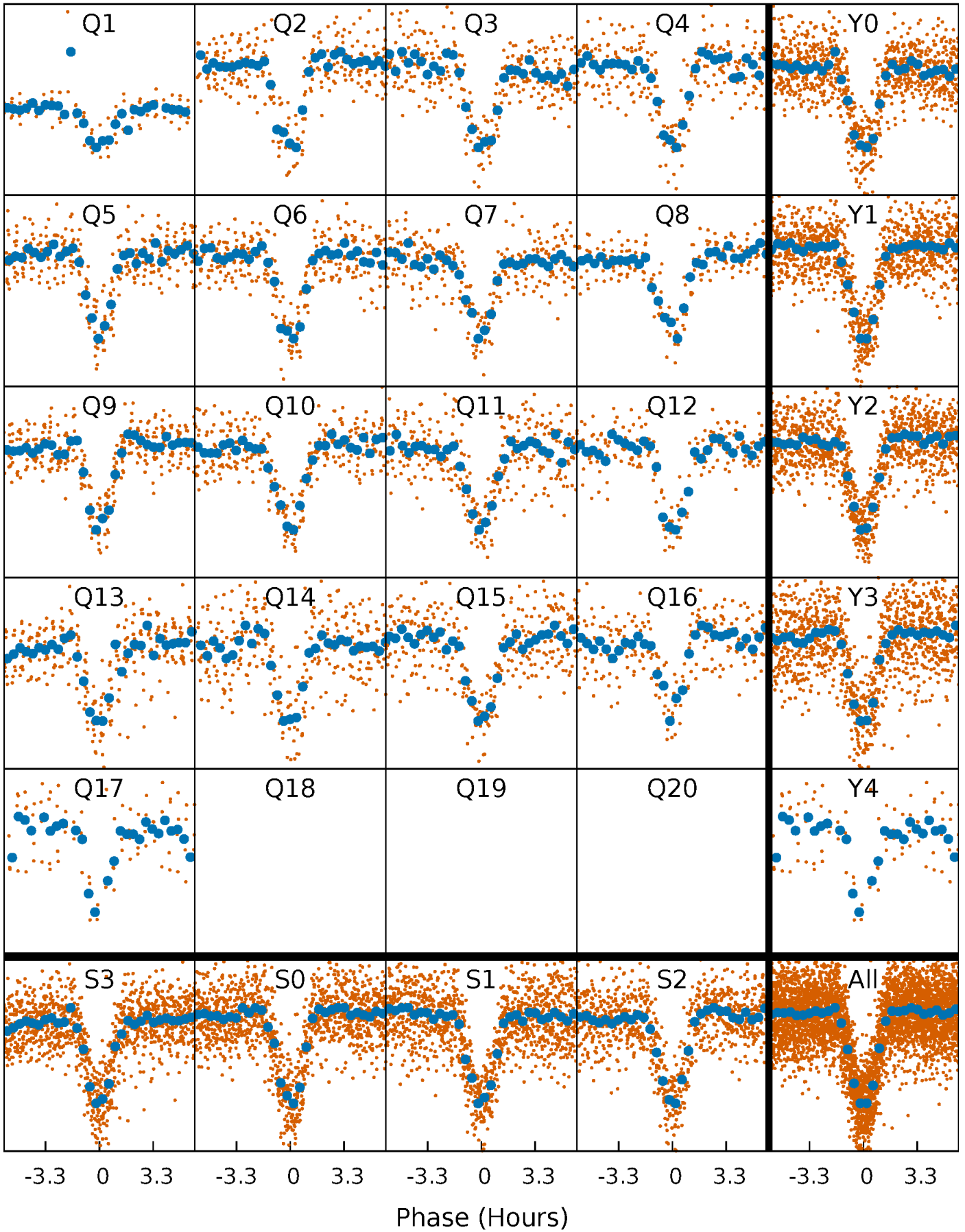


**Planet 1 : Phased Whitened Flux Time Series (Fit Epoch/Period)**



# PDC Quarter-Phased Transit Curves

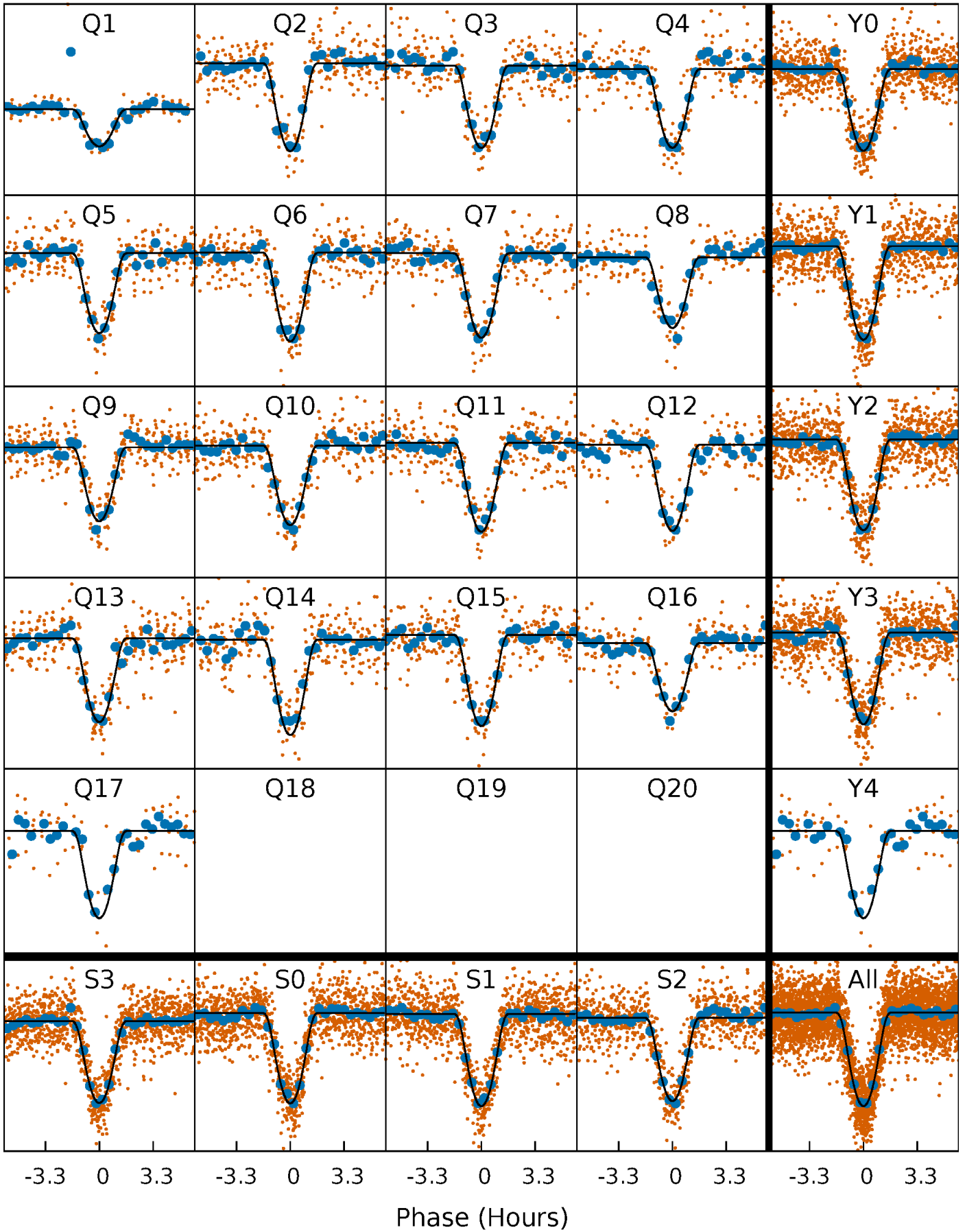
TCE 009898364-01   P= 7.132362 Days    $T_0=134.472187$  (BKJD)





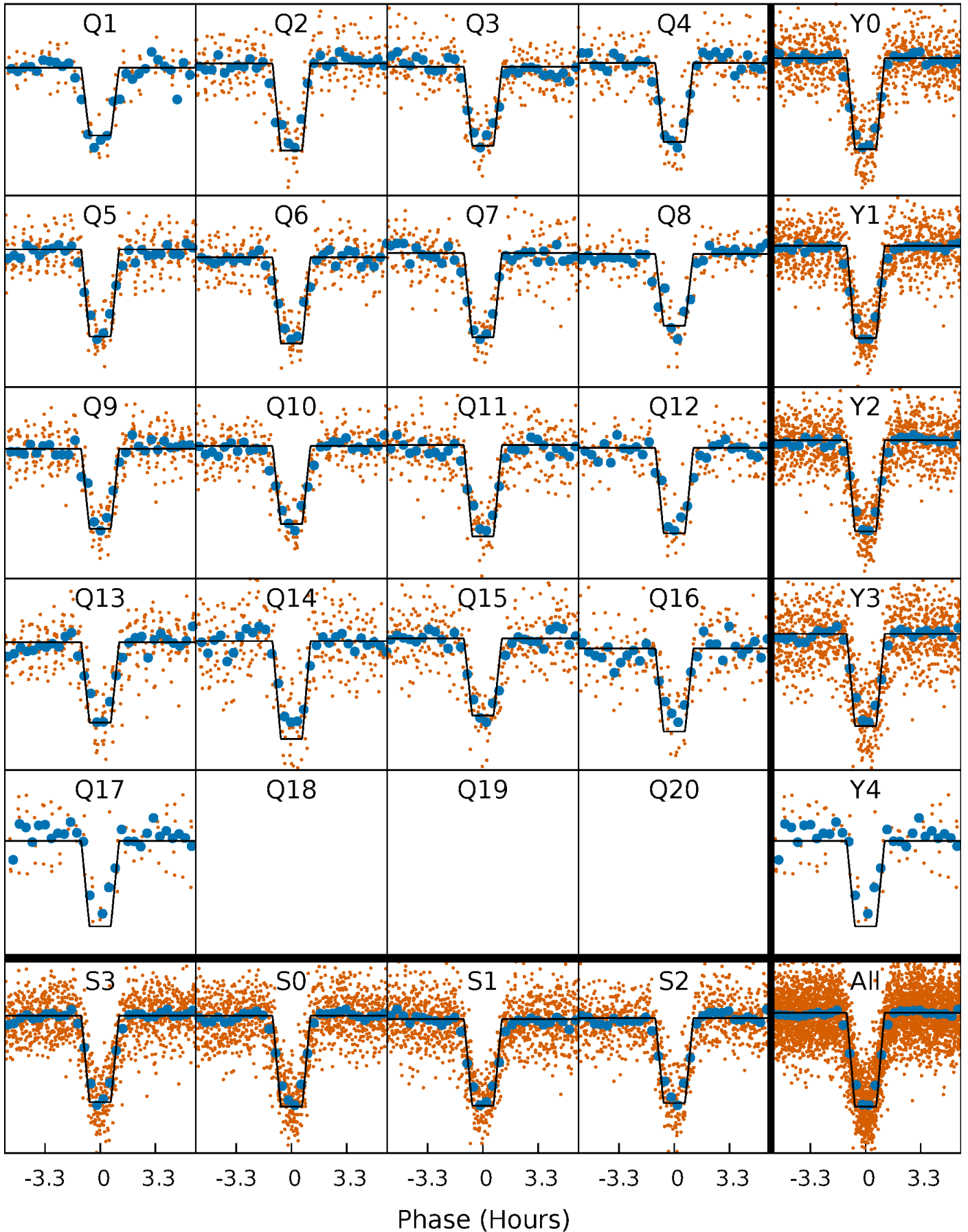
# DV Quarter-Phased Transit Curves

TCE 009898364-01   P= 7.132362 Days    $T_0=134.472187$  (BKJD)



# Alt. Detrend Quarter-Phased Transit Curves

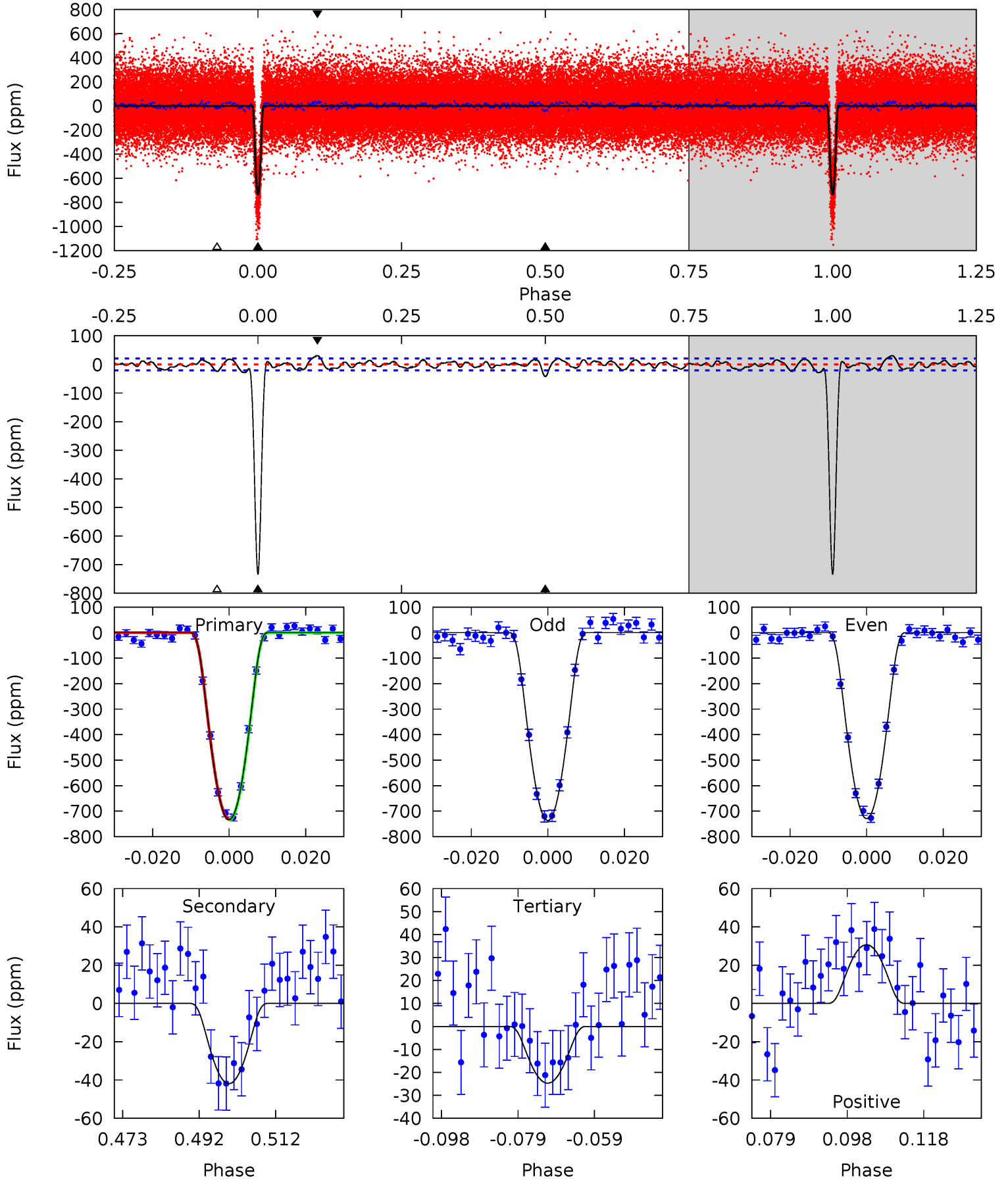
TCE 009898364-01   P= 7.132313 Days    $T_0=134.476573$  (BKJD)



# DV Model-Shift Uniqueness Test

009898364-01, P = 7.132362 Days, E = 127.339825 Days

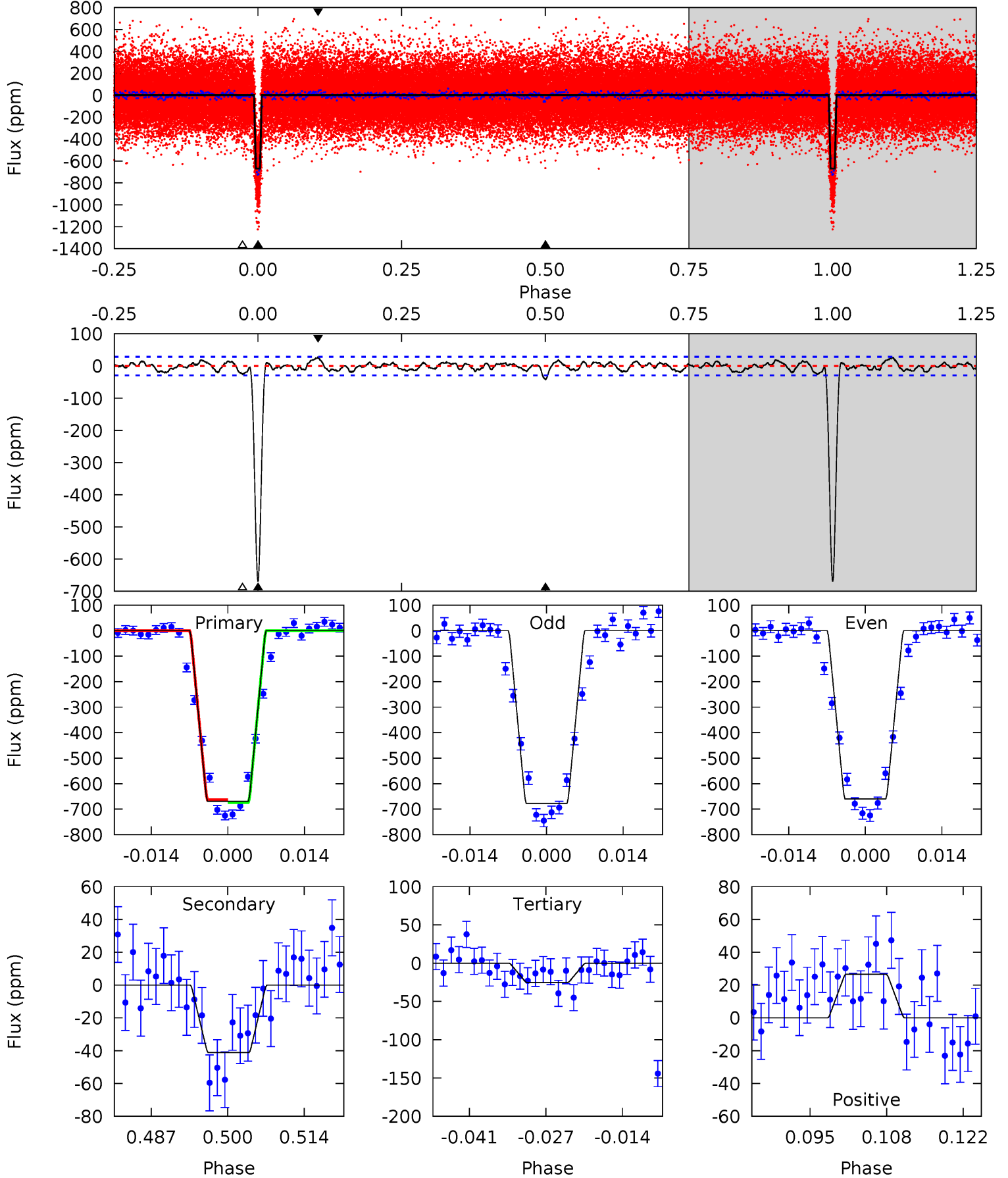
Pri	Sec	Ter	Pos	FA <sub>1</sub>	FA <sub>2</sub>	F <sub>Red</sub>	Pri-Ter	Pri-Pos	Sec-Ter	Sec-Pos	Odd-Evn	DMM	Shape	TAT
173.4	9.91	5.85	7.26	4.89	2.33	2.41	167.5	166.1	4.06	2.66	0.89	0.99	0.04	0.36



# Alt Model-Shift Uniqueness Test

009898364-01, P = 7.132313 Days, E = 127.344260 Days

Pri	Sec	Ter	Pos	FA <sub>1</sub>	FA <sub>2</sub>	F <sub>Red</sub>	Pri-Ter	Pri-Pos	Sec-Ter	Sec-Pos	Odd-Evn	DMM	Shape	TAT
115.0	7.08	4.34	4.56	4.97	2.47	1.66	110.6	110.4	2.74	2.52	1.49	0.99	0.04	0.96



### Stellar Parameters For KIC 009898364

	$T_{\text{eff}}(K)$	$\log(g)$	[Fe/H]	$R (R_{\odot})$	$M(M_{\odot})$	$p_{\star} (\text{g}\cdot\text{cm}^{-3})$
	$7530^{+209}_{-314}$	$4.080^{+0.160}_{-0.176}$	$-0.060^{+0.200}_{-0.350}$	$1.930^{+0.532}_{-0.435}$	$1.633^{+0.212}_{-0.259}$	$0.320^{+0.270}_{-0.145}$
	+3%/-4%	+4%/-4%	+333%/-583%	+28%/-23%	+13%/-16%	+84%/-45%
Source	KIC0	KIC0	KIC0	DSEP		

KIC = Kepler Input Catalog; PHO = Photometry; SPE = Spectroscopy; AST = Asteroseismology  
 TRA = Transits; DESP = Dartmouth Models; MULT = Multiple Models

### Secondary Eclipse Parameters for KIC 009898364-01 / KOI 1579.01

Detrend	Depth (ppm)	$R_p (R_{\oplus})$	$T_{\text{max}} (K)$	$T_{\text{obs}} (K)$	$A_{\text{obs}}$
DV	$-42 \pm 4$	$8.51^{+2.41}_{-2.05}$	$2194^{+163}_{-148}$	$3344^{+329}_{-230}$	$2.237^{+1.664}_{-0.853}$
Alt.	$-41 \pm 6$	$5.76^{+2.25}_{-2.02}$	$2205^{+164}_{-147}$	$3887^{+664}_{-425}$	$4.902^{+7.100}_{-2.371}$

$T_{\text{max}}$  = Theoretical Maximum Planetary Temperature

$T_{\text{obs}}$  = Observed Planetary Temperature (Assuming A=0.3)

$A_{\text{obs}}$  = Observed Albedo (Assuming T=0)

If a secondary eclipse is present, the system is likely an EB if  $T_{\text{obs}} \gg T_{\text{max}}$  AND  $A_{\text{obs}} \gg 1.0$



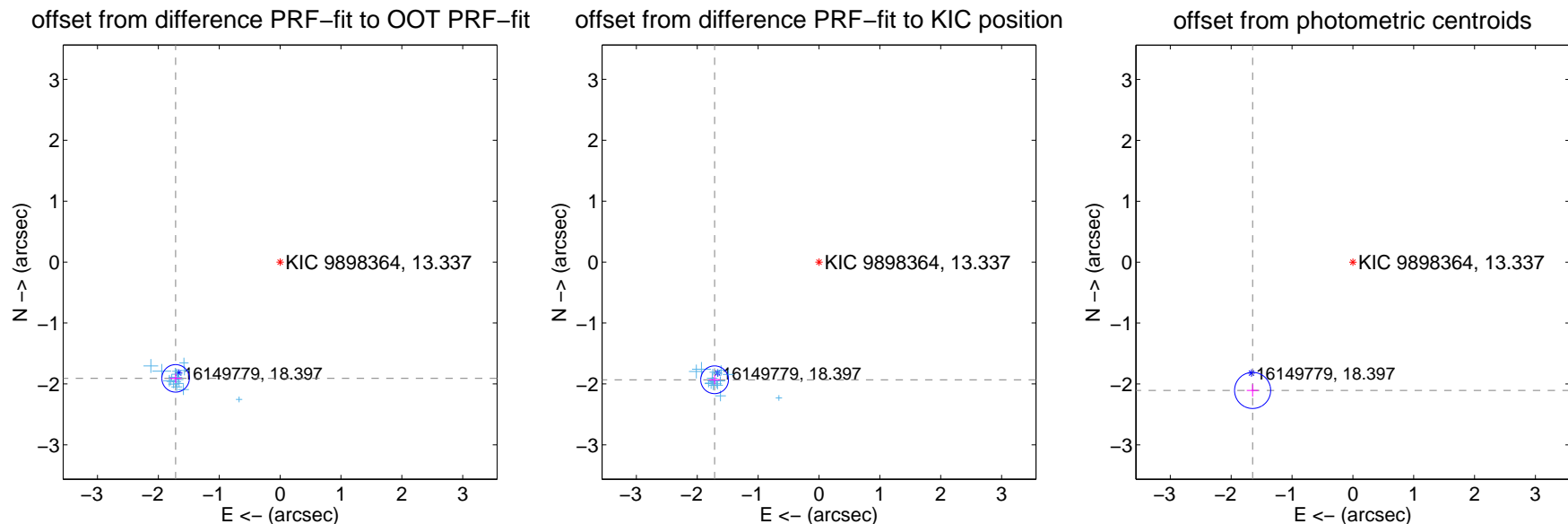
## DV Centroid Data

Supplemental centroid analysis for 009898364-01. Kepler magnitude: 13.34. Transit SNR 85.89

There are 17 quarters with good PRF difference image offsets

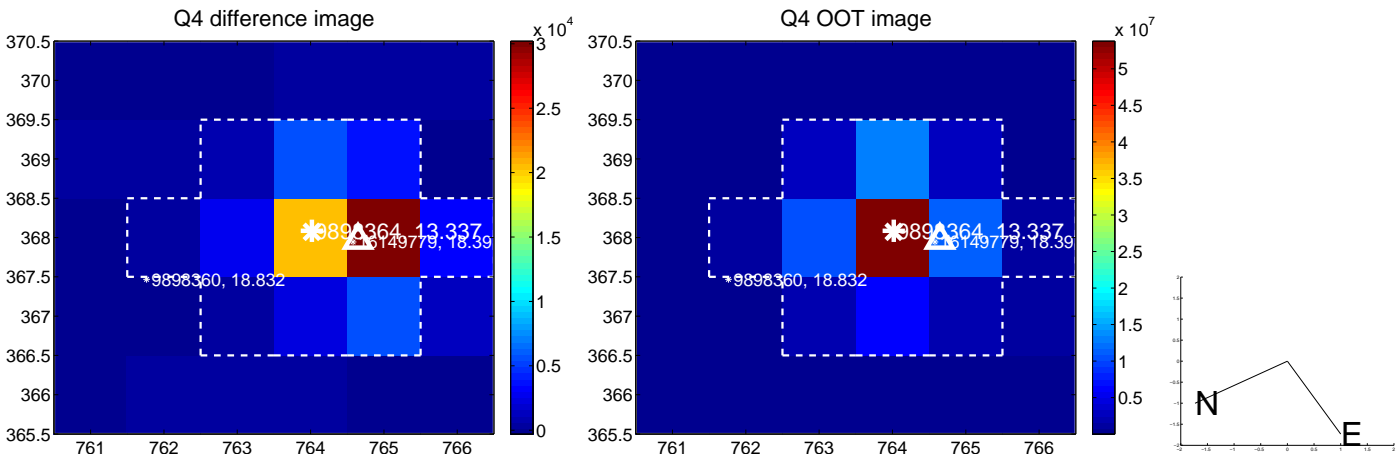
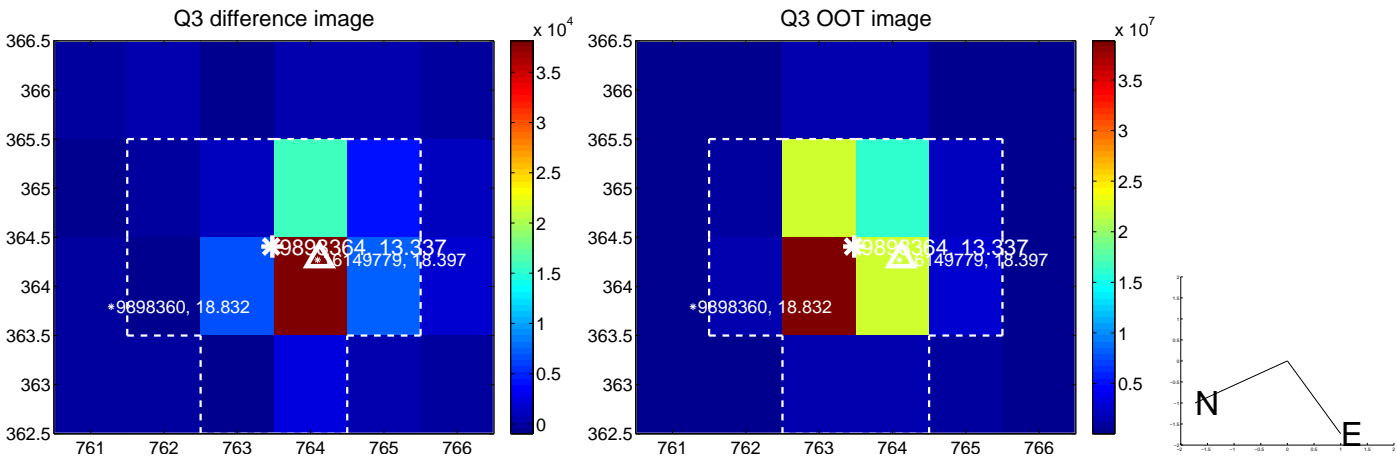
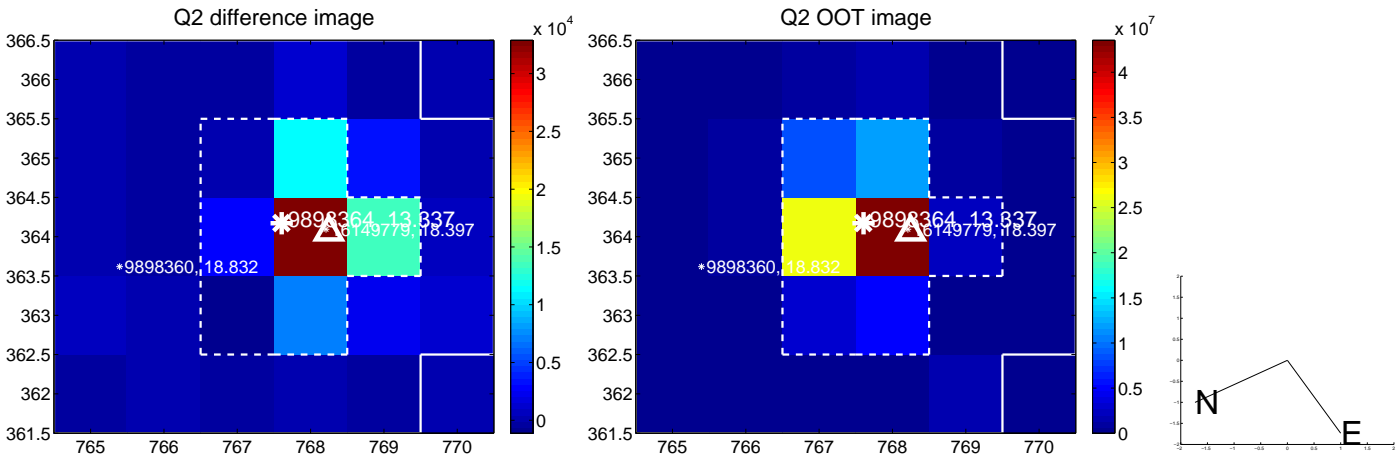
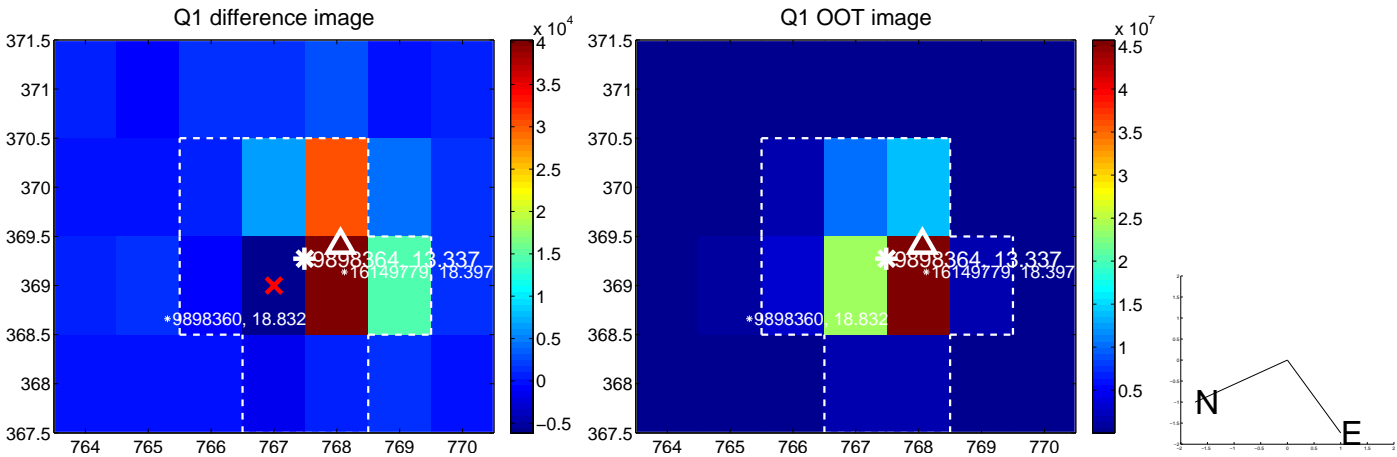
The direct PRF centroid is offset from the target star catalog position by about 0.04 arcsec

	Distance in arcsec	Distance / $\sigma$	$\Delta$ RA	$\Delta$ Dec
PRF-fit source offset from OOT	$2.567 \pm 0.075$	34.10	$1.717 \pm 0.095$	$-1.909 \pm 0.076$
PRF-fit source offset from KIC position	$2.583 \pm 0.076$	34.04	$1.715 \pm 0.094$	$-1.932 \pm 0.074$
photometric centroid source offset	$2.67 \pm 0.10$	27.05	$1.65 \pm 0.10$	$-2.11 \pm 0.10$

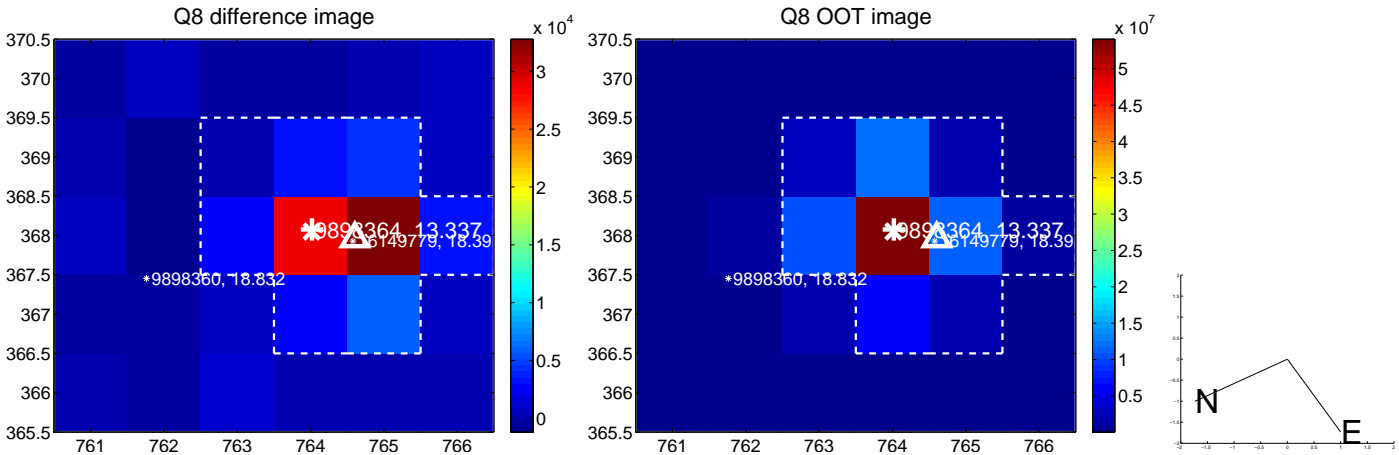
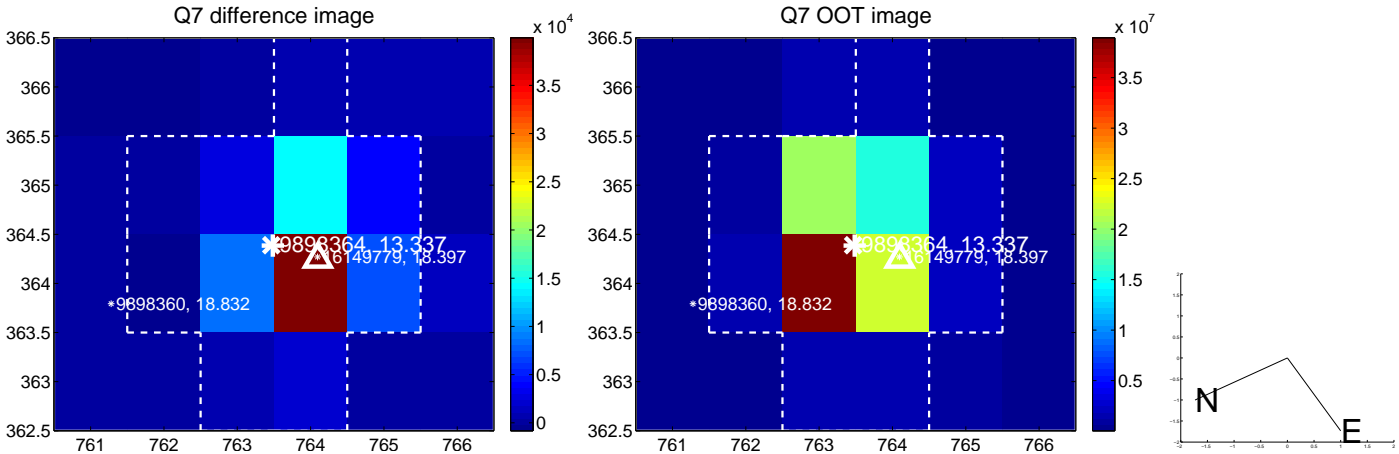
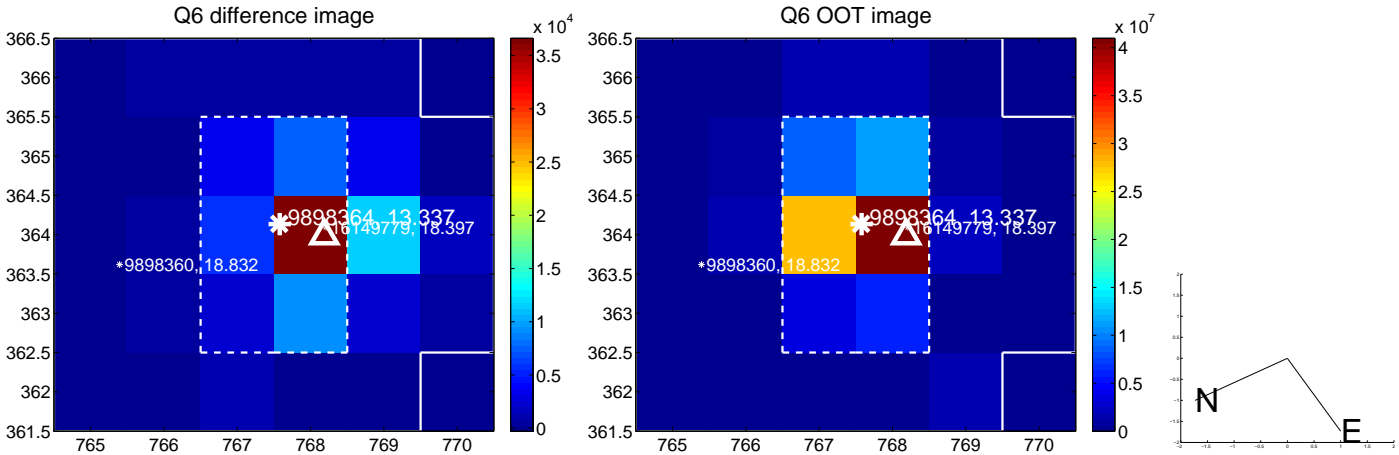
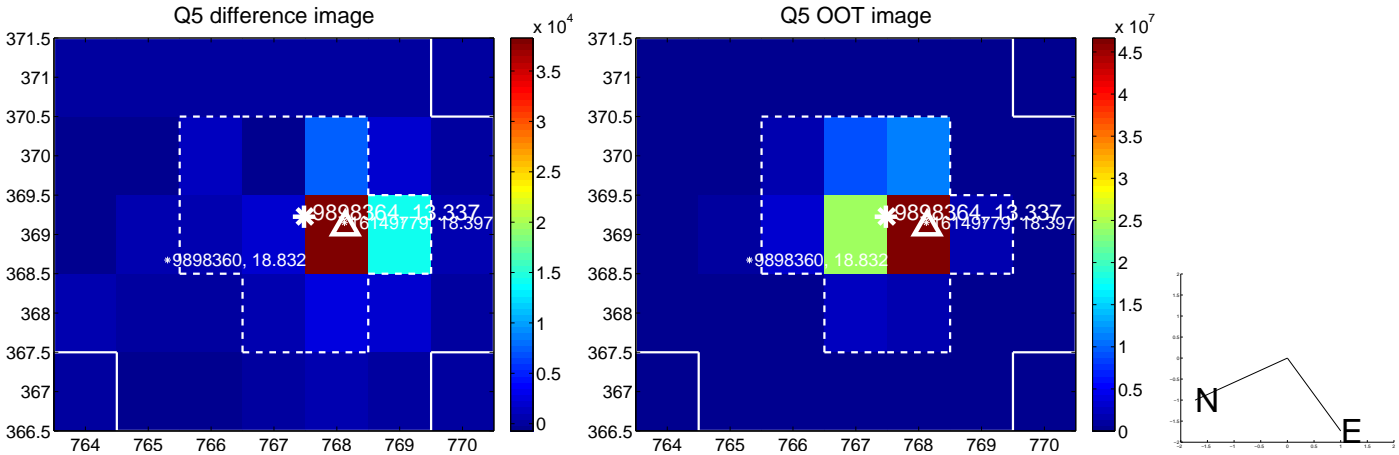


Centroid source offsets from the target star reconstructed from PRF and photometric centroids. **Sky blue crosses:** good quarterly centroid offsets; **Vermillion crosses:** bad quarterly centroid offsets; magenta cross: average over quarters. Length of the crosses: one- $\sigma$  uncertainty. Blue circle: three- $\sigma$ . Red \*: target star. Blue \*: Other stars. Text next to a star gives its KIC ID and kepmag. KIC IDs > 15,000,000 are from the UKIRT catalog.

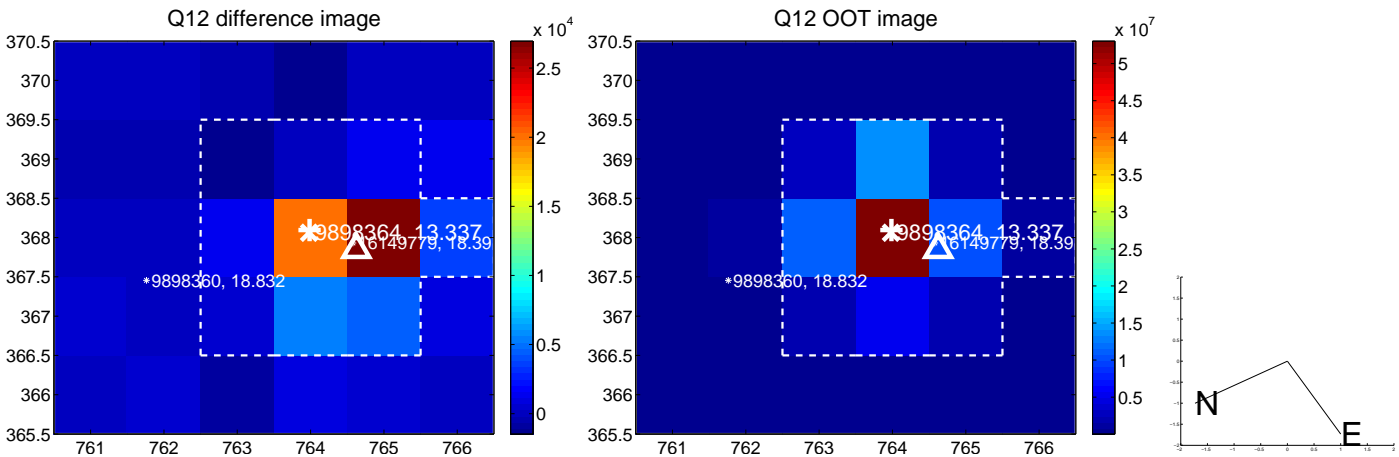
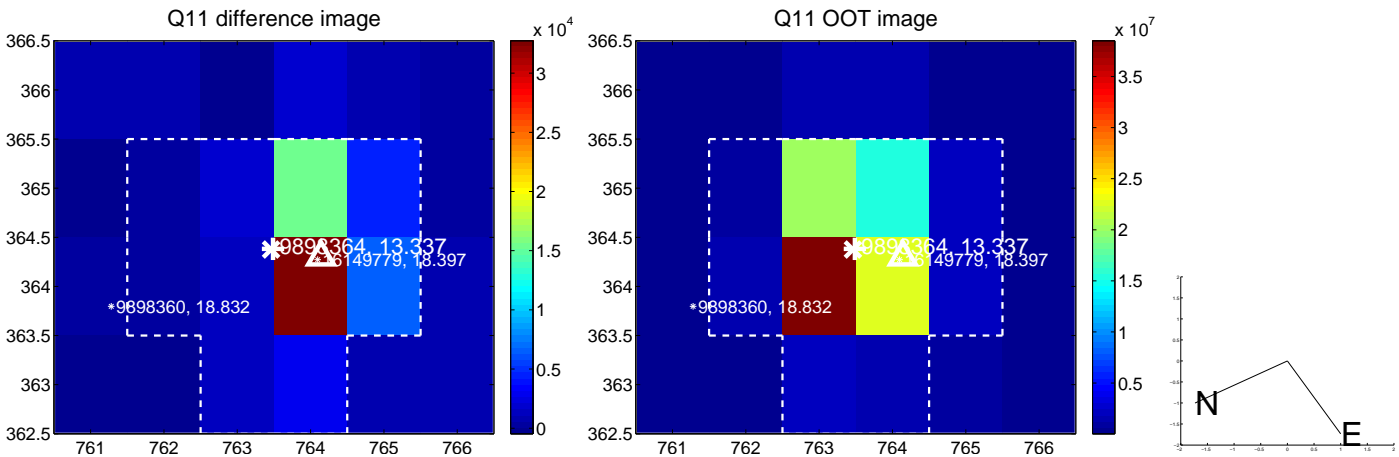
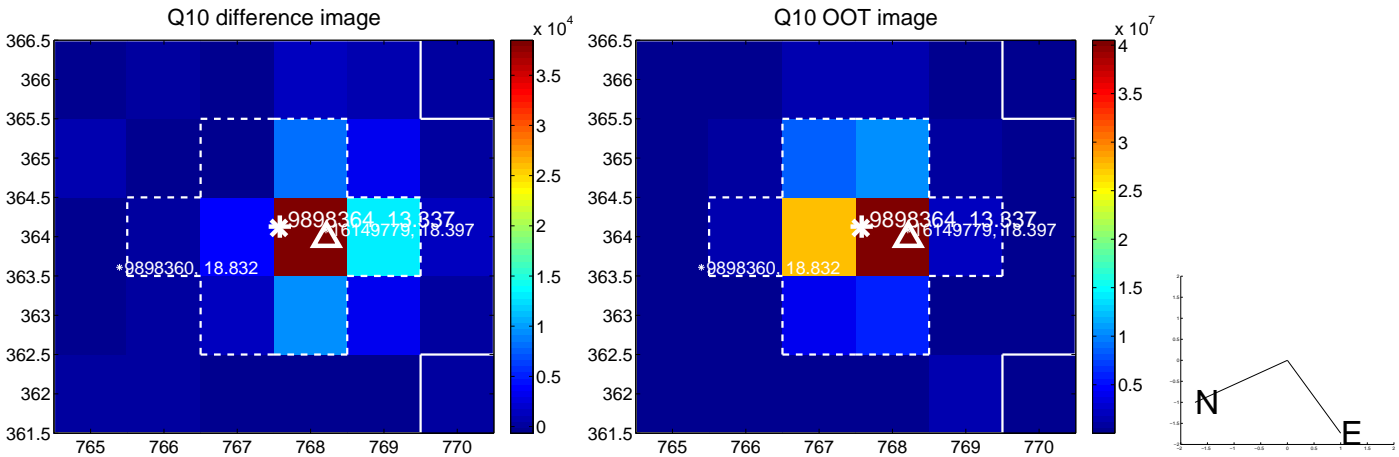
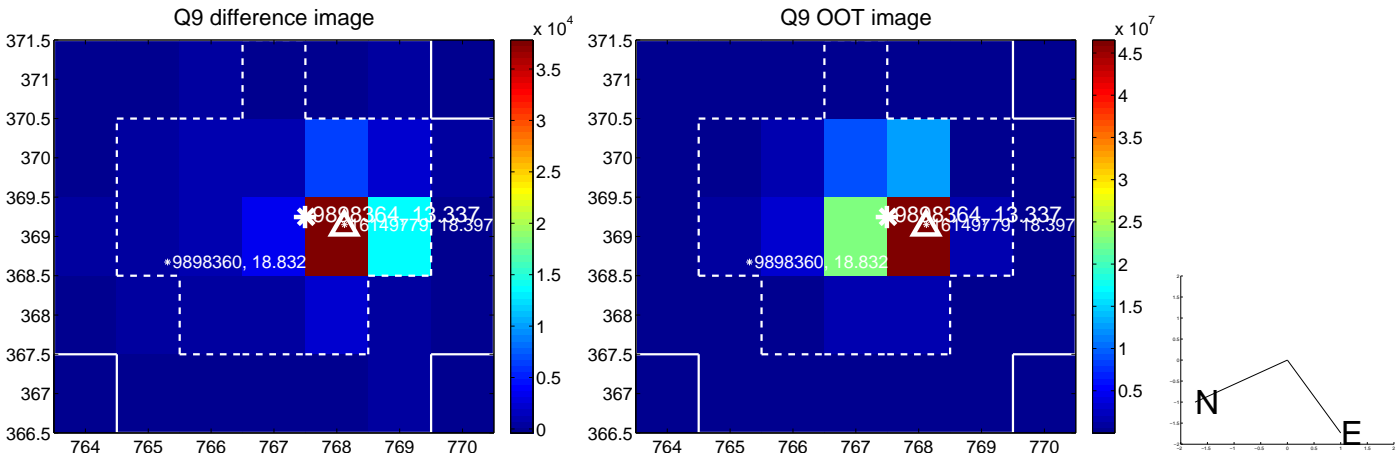
white  $\times$ : KIC target position;  $+$ : OOT centroid;  $\triangle$ : difference centroid. red  $\times$ : large negative pixel value.



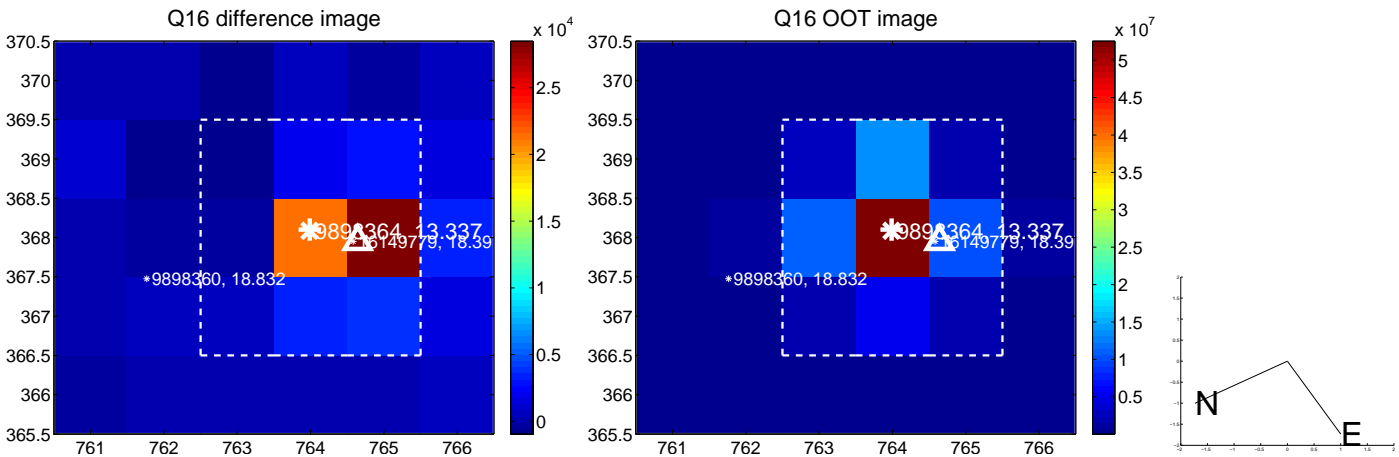
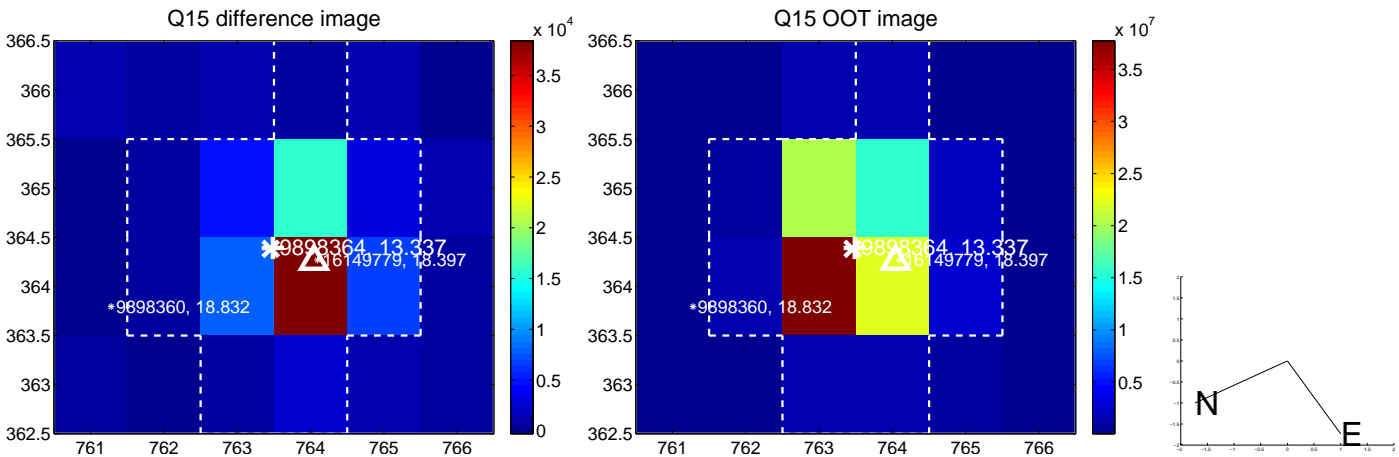
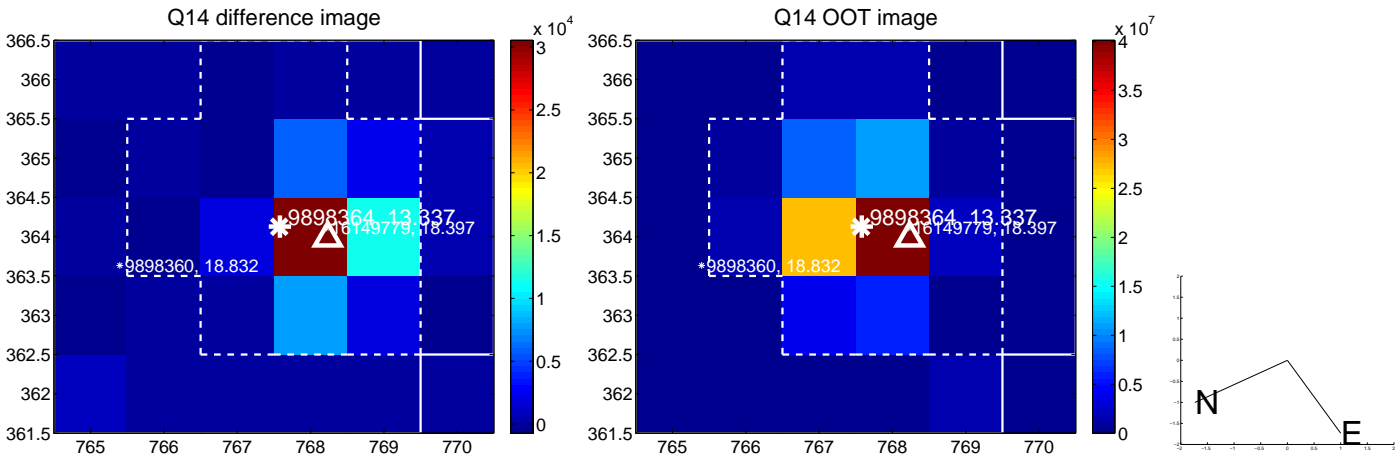
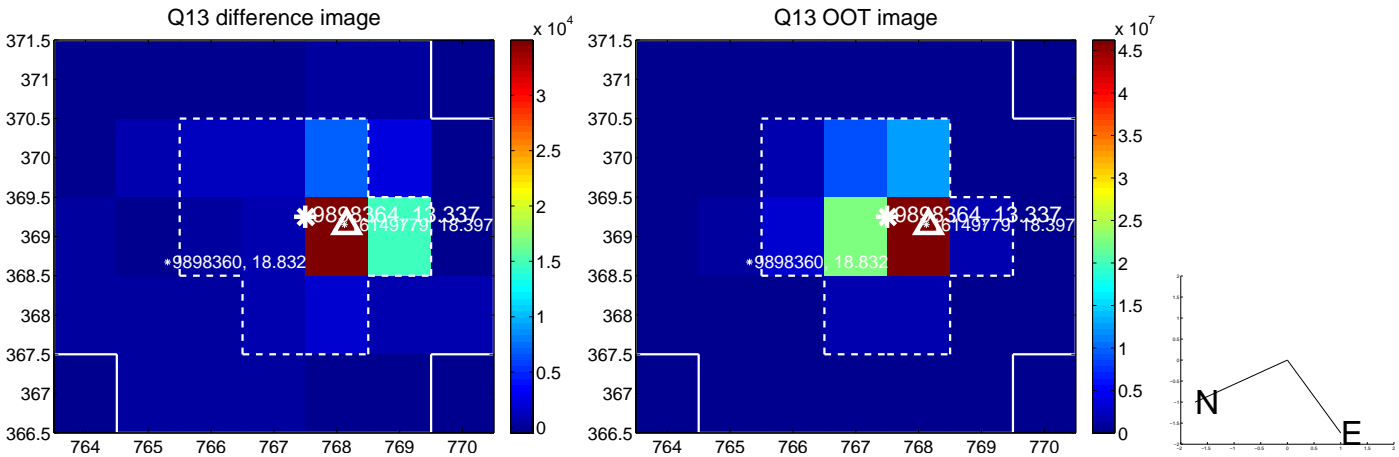
white  $\times$ : KIC target position;  $+$ : OOT centroid;  $\triangle$ : difference centroid. red  $\times$ : large negative pixel value.



white  $\times$ : KIC target position; +: OOT centroid;  $\triangle$ : difference centroid. red  $\times$ : large negative pixel value.



white  $\times$ : KIC target position; +: OOT centroid;  $\triangle$ : difference centroid. red  $\times$ : large negative pixel value.







UKIRT Image

Declination

