

# KIC 009791112

## Q1-17 DR25 TCE Parameters

TCE	Run Type	KOI?	Period (Days)	Epoch (BKJD)	Depth (ppm)	Duration (Hours)	MES	SNR	$R_{\star}$ ( $R_{\odot}$ )	$T_{\star}$ (K)	$R_p$ ( $R_{\oplus}$ )	$S_p$ ( $S_{\oplus}$ )
009791112-01	OBS	No	1.256883	132.081267	168.2	5.466	11.0	11.1	1.72	7335	2.57	11865.48

## Robovetter Results

TCE	Run Type	Disp	Score	N	S	C	E	Comments
009791112-01	OBS	FP	0.00	1	0	0	0	LPP_DV—LPP_ALT—MOD_NONUNIQ_DV—MOD_NONUNIQ_ALT

**Notes:** OBS = Observed. INJ = Injected. INV = Inverted. SCR = Scrambled.

N = Not Transit-Like. S = Stellar Eclipse. C = Centroid Offset. E = Ephemeris Match.

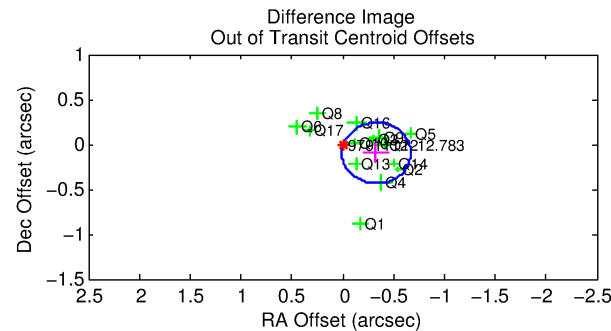
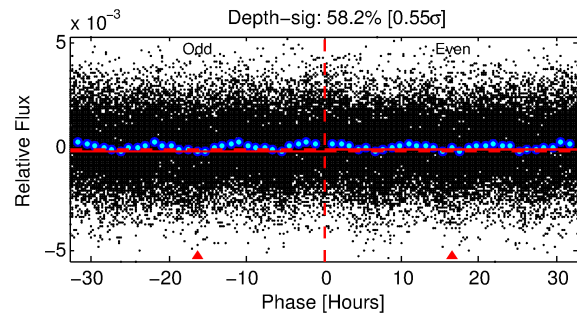
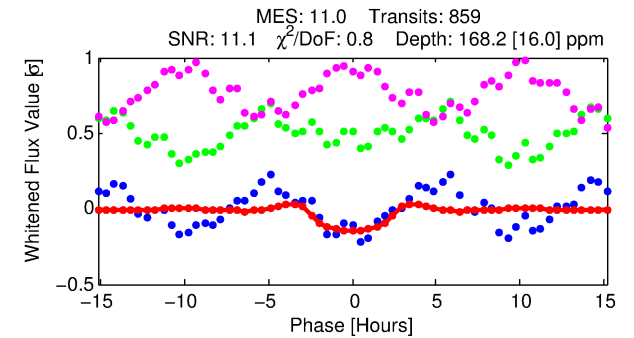
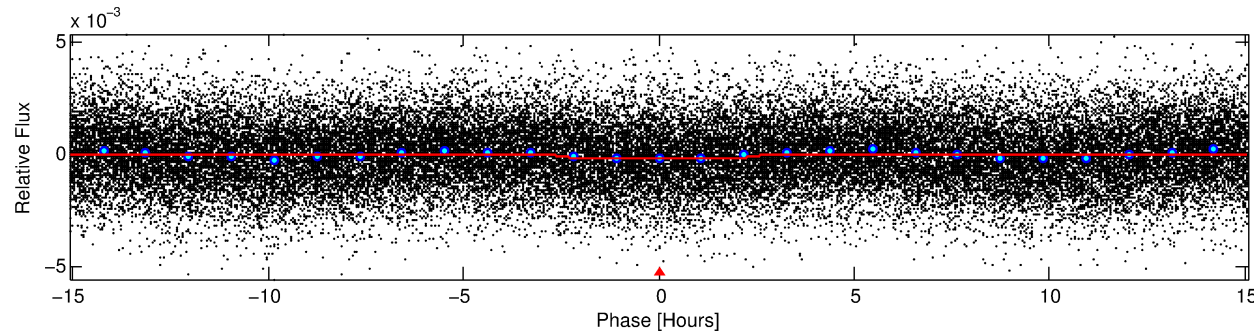
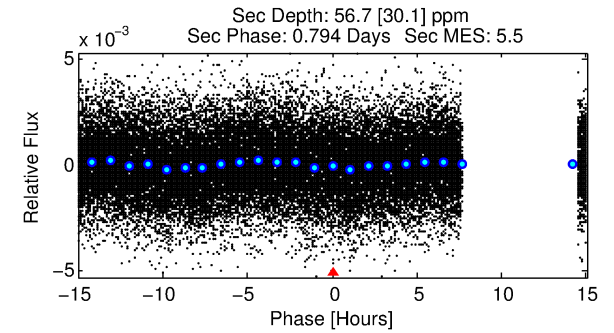
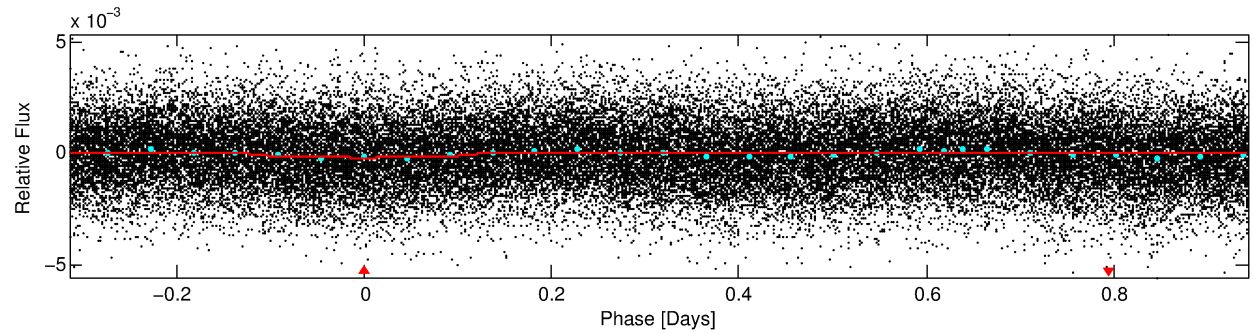
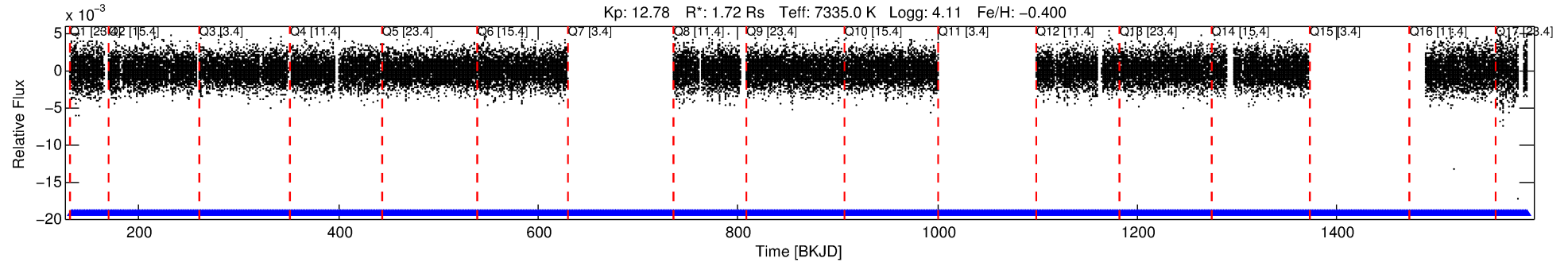
See [http://exoplanetarchive.ipac.caltech.edu/docs/API\\_kepcandidate\\_columns.html#proj\\_disp\\_col](http://exoplanetarchive.ipac.caltech.edu/docs/API_kepcandidate_columns.html#proj_disp_col) for comment definitions.

## Ephemeris Match Information For 009791112-01

No Significant Match Found

# DV One-Page Summary

KIC: 9791112 Candidate: 1 of 1 Period: 1.257 d



## DV Fit Results:

Period = 1.25688 [0.00001] d  
Epoch = 132.0813 [0.0051] BKJD  
Rp/R\* = 0.0137 [0.0029]  
a/R\* = 1.26 [0.59]  
b = 0.90 [0.29]  
Seff = 11865.48 [4491.93]  
Teq = 2661 [252] K  
Rp = 2.57 [0.93] Re  
a = 0.0254 [0.0061] AU  
Ag = 3.04 [2.29] [0.89σ]  
Teffp = 5433 [945] K [2.84σ]

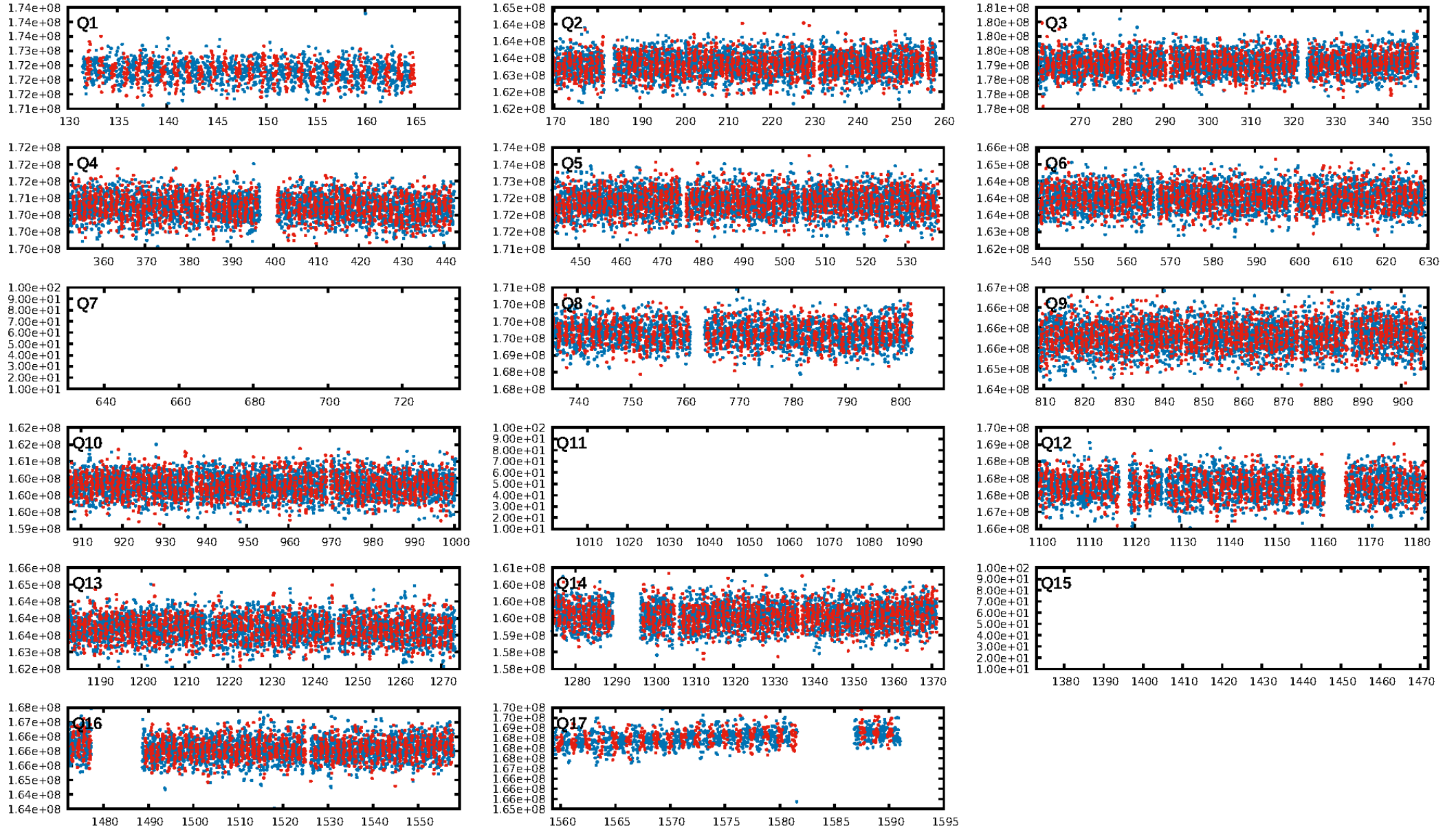
## DV Diagnostic Results:

ShortPeriod-sig: N/A  
LongPeriod-sig: N/A  
ModelChiSquare2-sig: N/A  
ModelChiSquareGof-sig: N/A  
Bootstrap-pfa: 9.25e-19  
RollingBand-fgt: 1.00 [811/811]  
GhostDiagnostic-chr: 3.282  
Centroid-sig: 0.1%  
Centroid-so: 0.327 arcsec [2.89σ]  
OotOffset-rm: 0.344 arcsec [3.05σ]  
KicOffset-rm: 0.495 arcsec [4.29σ]  
OotOffset-st: 4/1/4/5 [14]  
KicOffset-st: 4/1/4/5 [14]  
DiffImageQuality-fgm: 1.00 [14/14]  
DiffImageOverlap-fno: 1.00 [14/14]

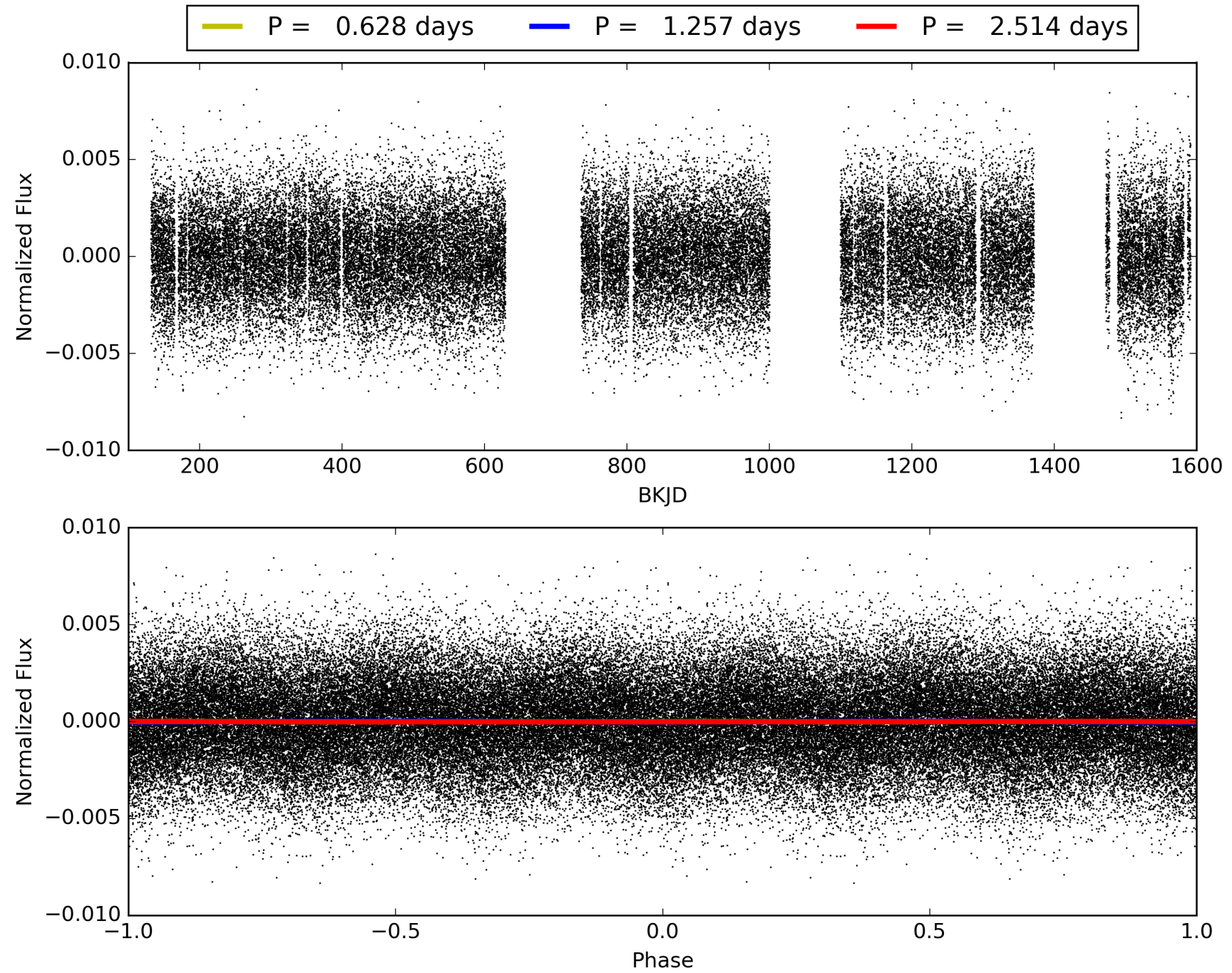
Software Revision: svn+ssh://murzim/repo/soc/tags/release/9.3.42@60958 -- Date Generated: 31-Jan-2016 22:18:35 Z

This Data Validation Report Summary was produced in the Kepler Science Operations Center Pipeline at NASA Ames Research Center

# TCE 009791112-01, PDC Light Curves



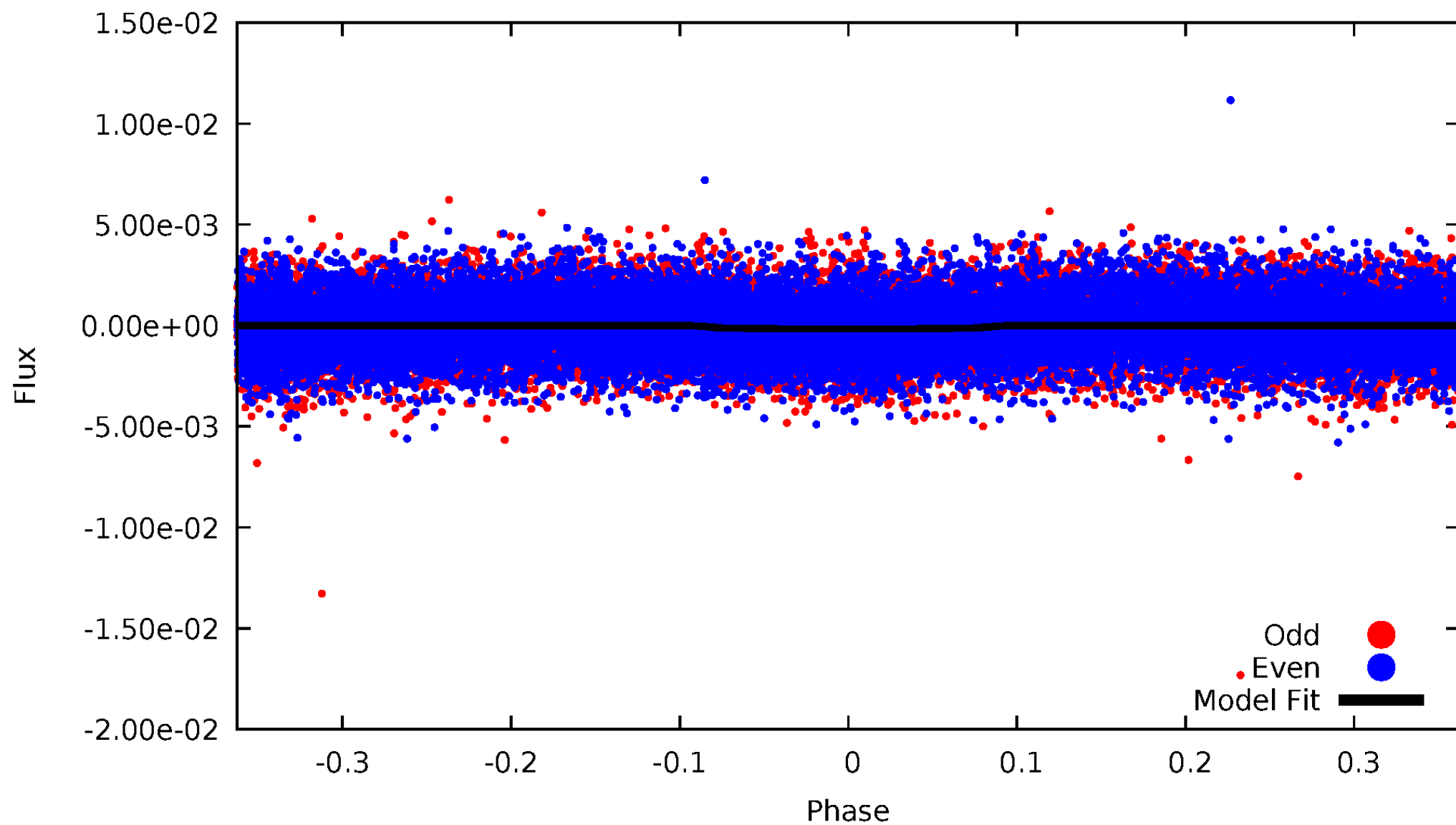
TCE 009791112-01





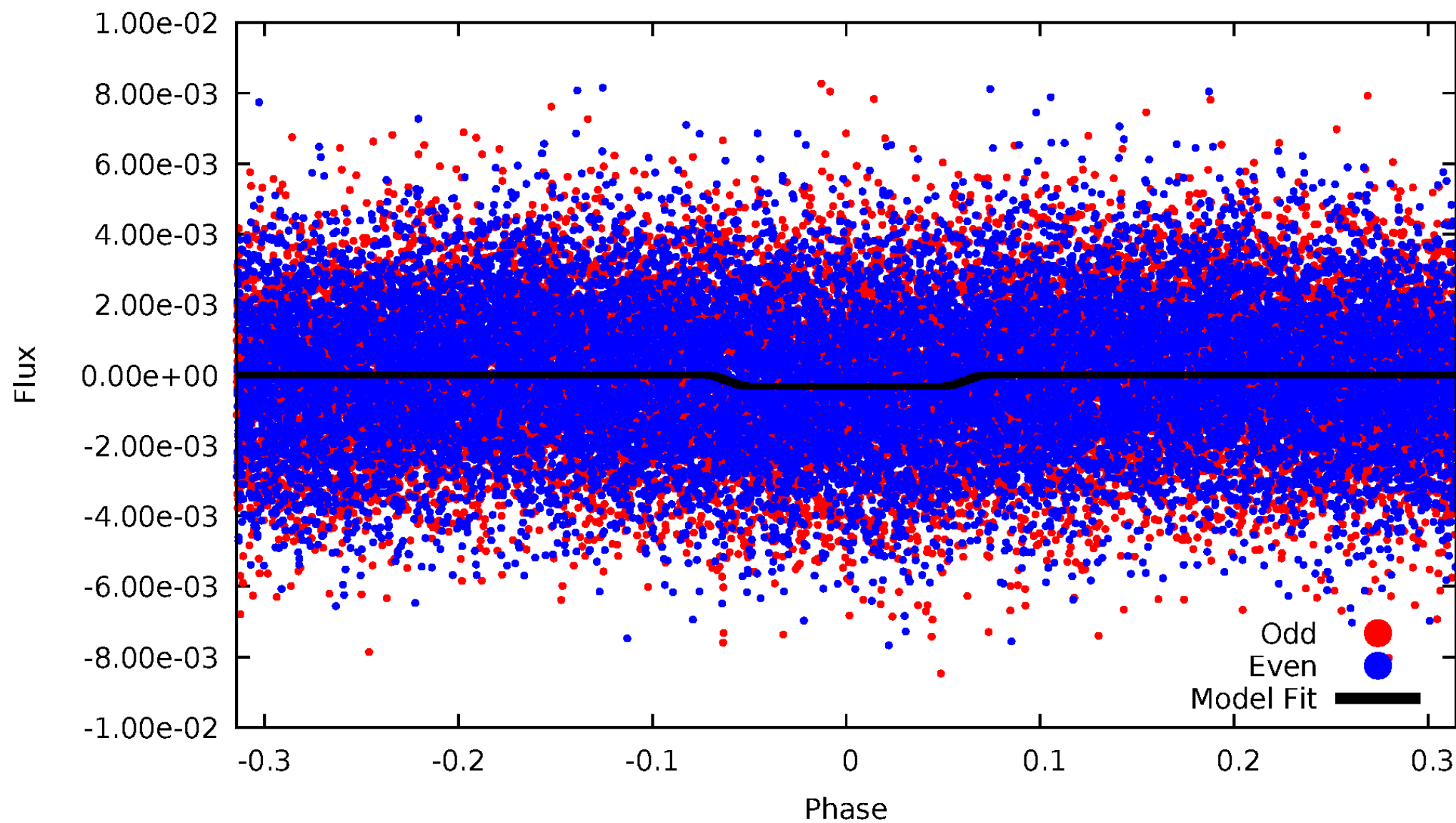
# DV Odd/Even

TCE 009791112-01

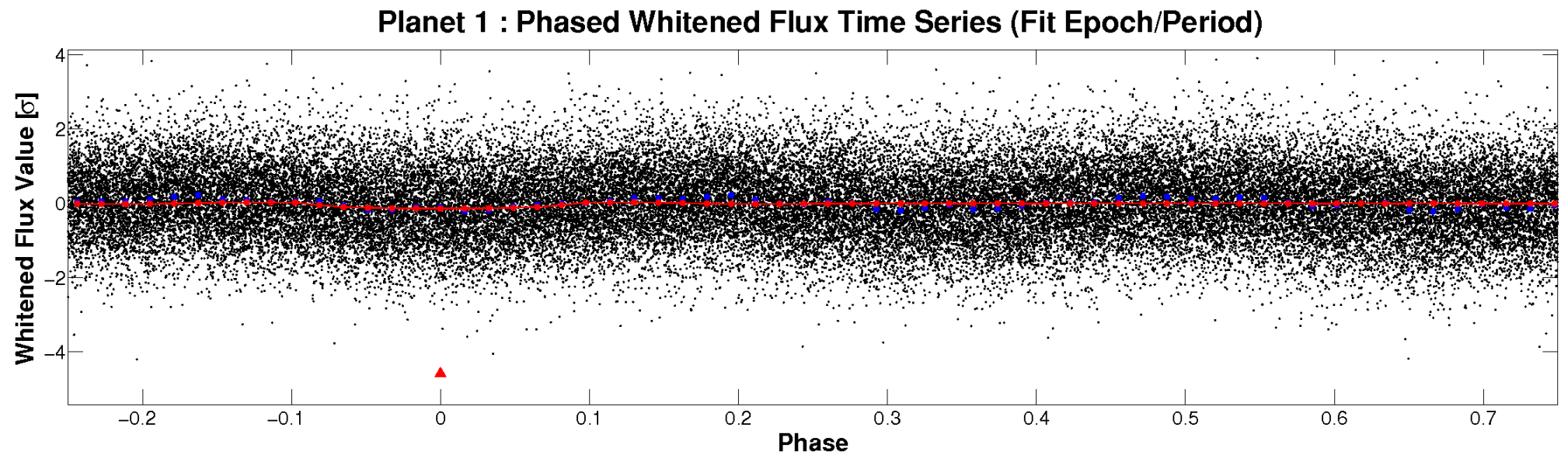
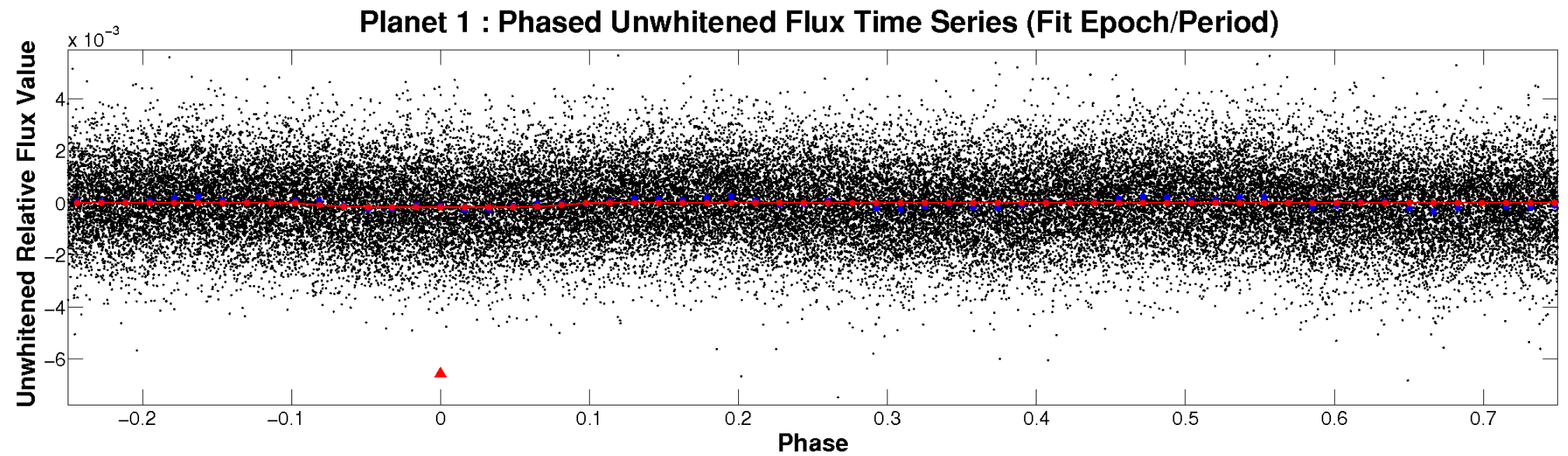


# ALT Odd/Even

TCE 009791112-01

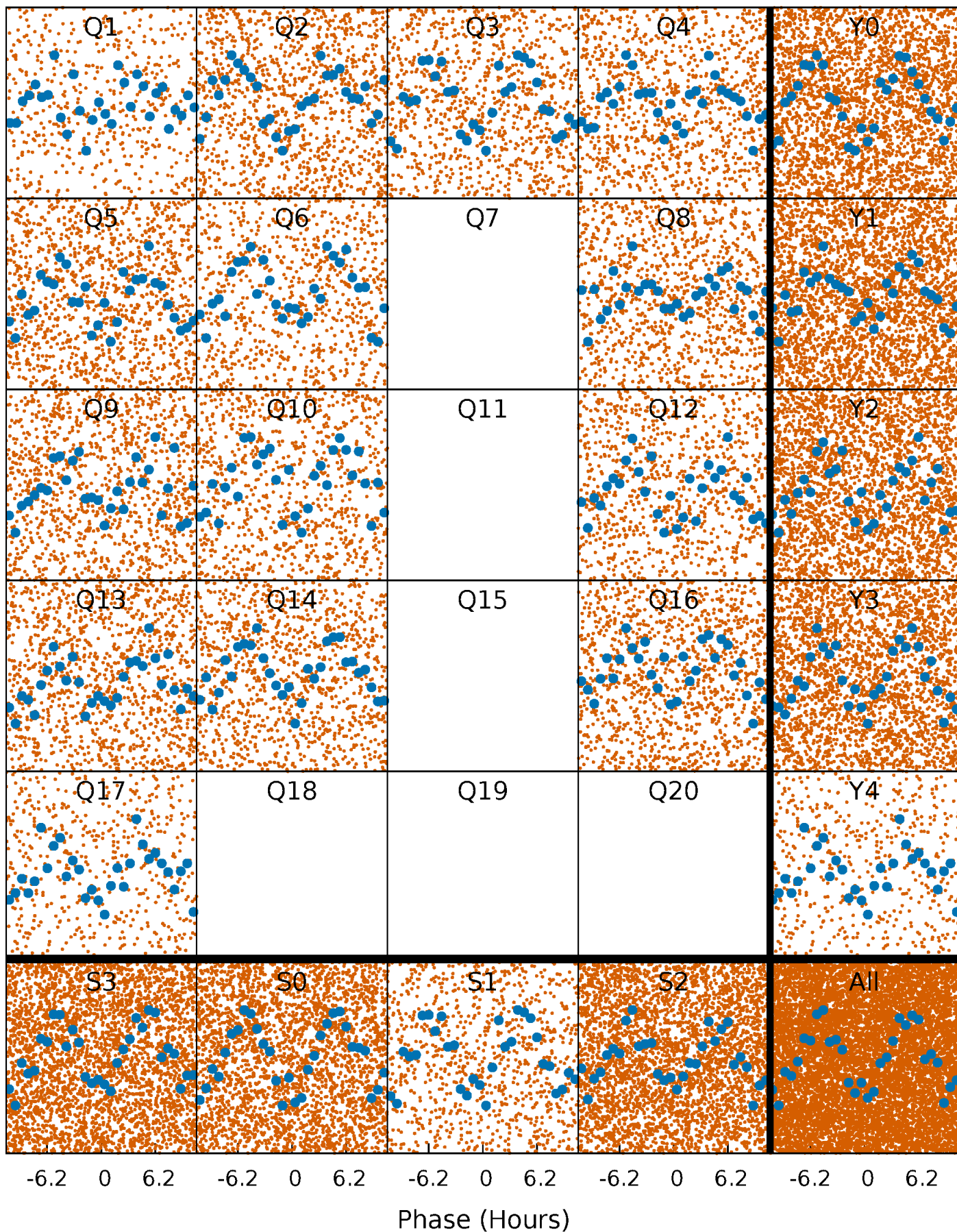


# Non-Whitened Vs. Whitened Light Curve



# PDC Quarter-Phased Transit Curves

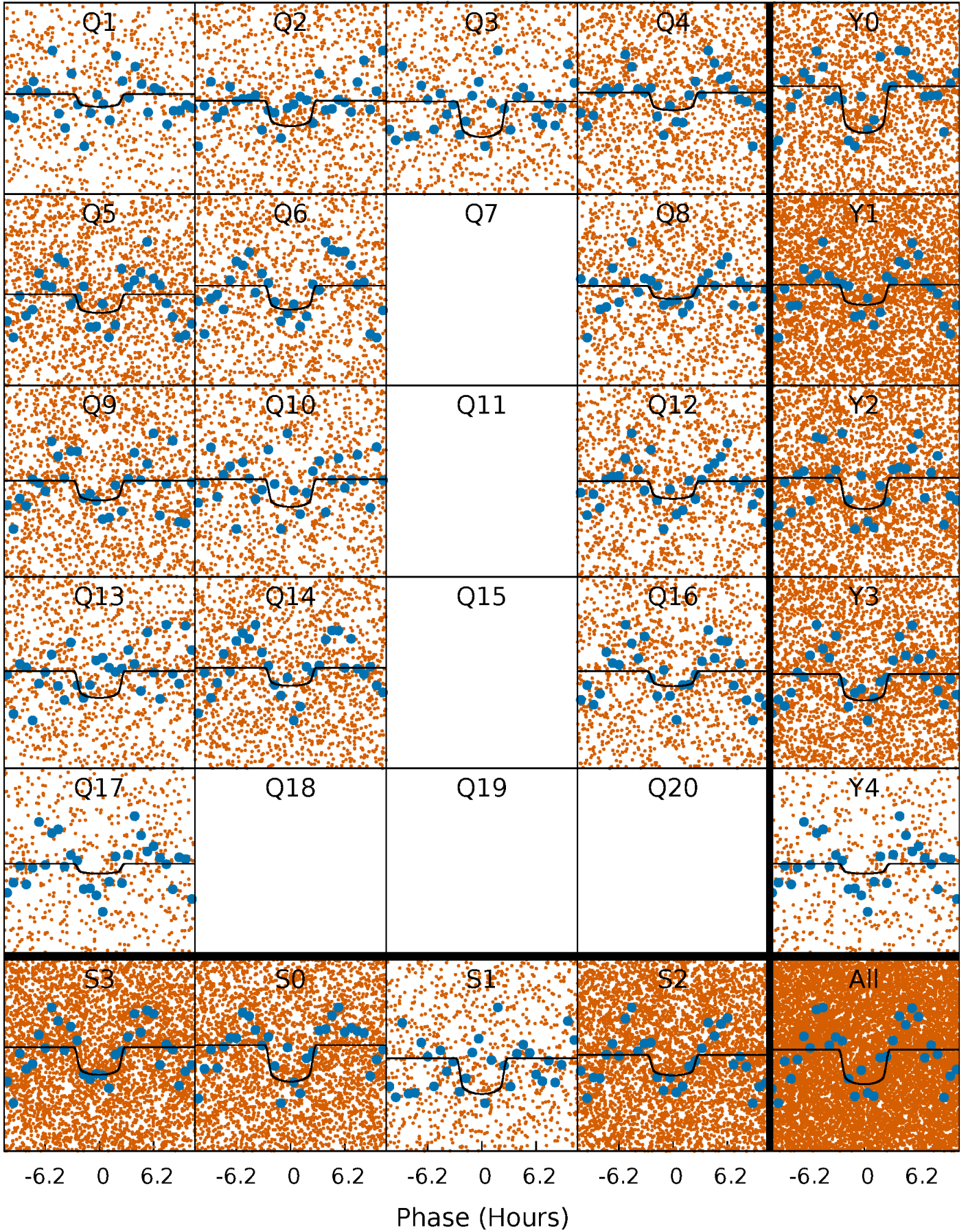
TCE 009791112-01 P= 1.256883 Days  $T_0=132.081267$  (BKJD)





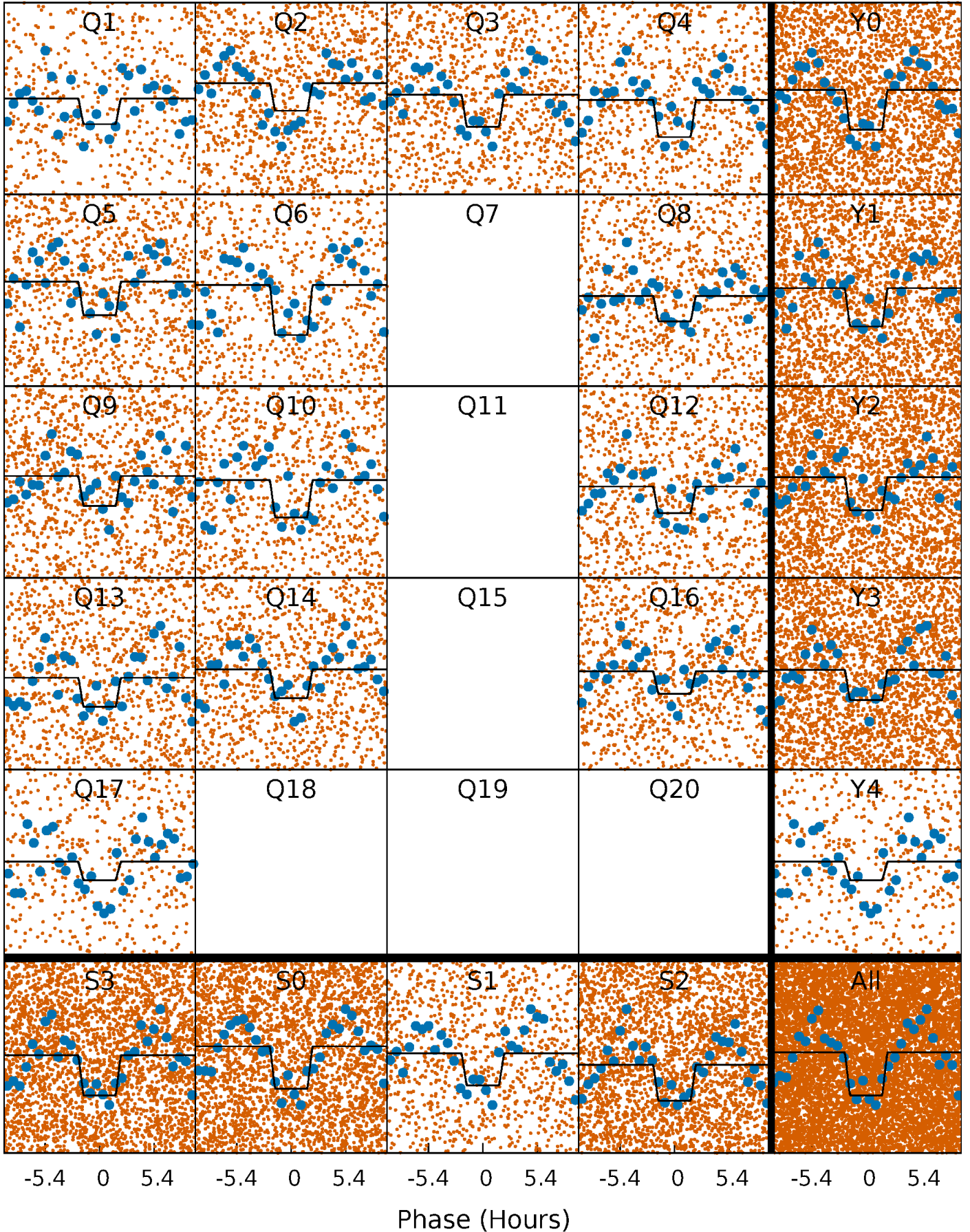
# DV Quarter-Phased Transit Curves

TCE 009791112-01 P= 1.256883 Days  $T_0=132.081267$  (BKJD)



# Alt. Detrend Quarter-Phased Transit Curves

TCE 009791112-01 P= 1.256891 Days  $T_0=132.068737$  (BKJD)

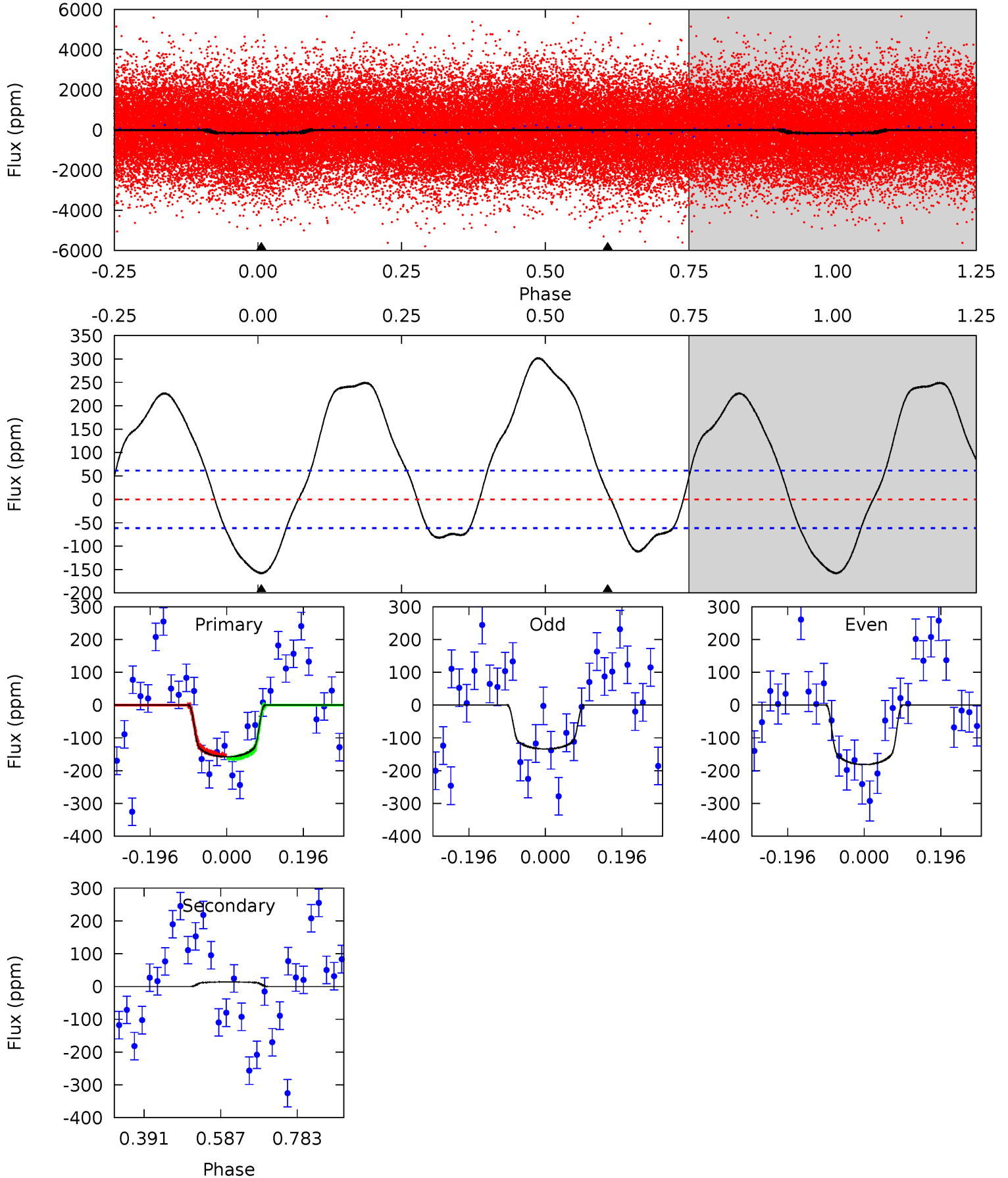




# DV Model-Shift Uniqueness Test

009791112-01, P = 1.256883 Days, E = 130.824384 Days

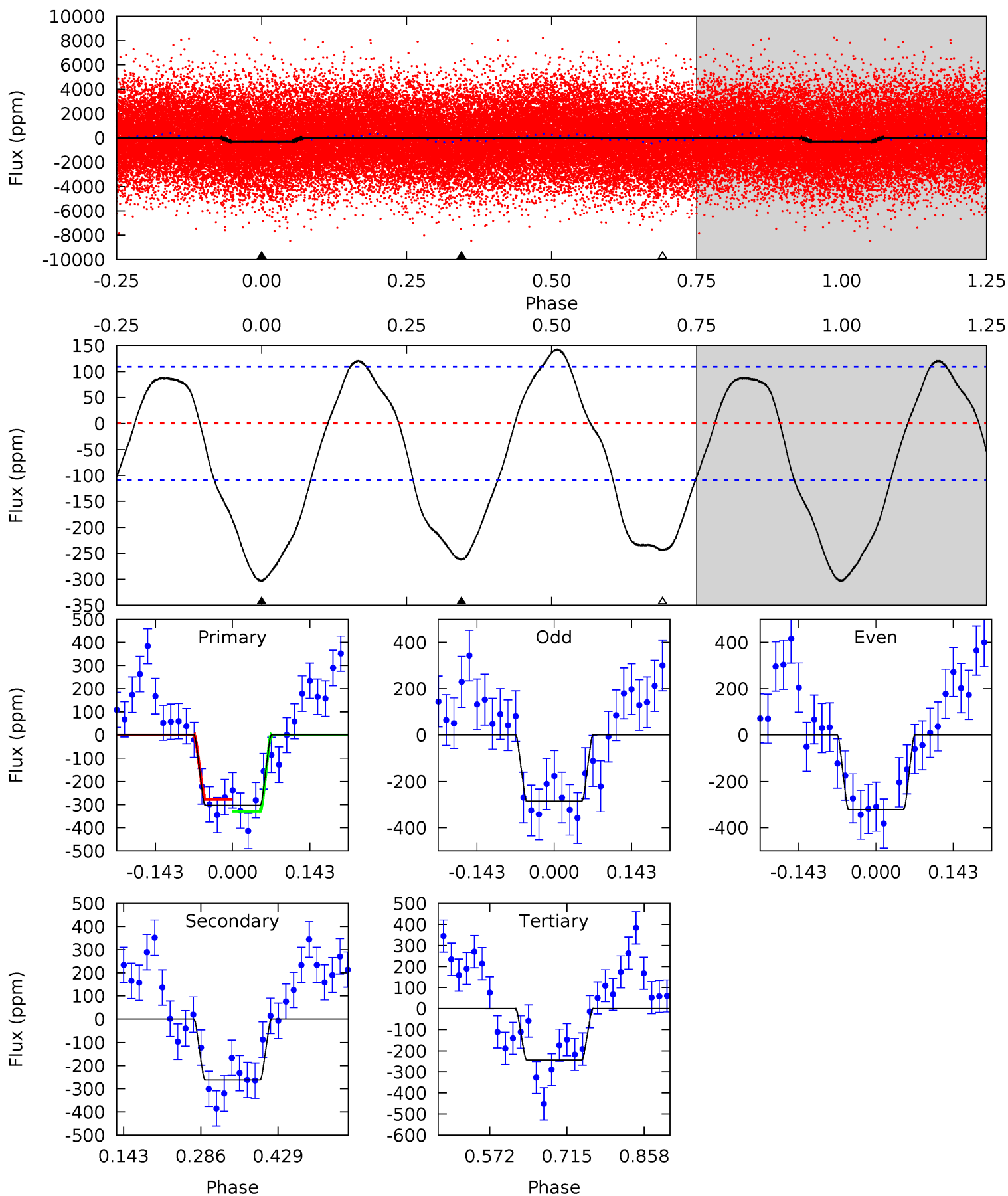
Pri	Sec	Ter	Pos	FA <sub>1</sub>	FA <sub>2</sub>	F <sub>Red</sub>	Pri-Ter	Pri-Pos	Sec-Ter	Sec-Pos	Odd-Evn	DMM	Shape	TAT
11.4	-1.00	0	0	4.42	1.29	7.04	11.4	11.4	-1.00	-1.00	1.73	0.94	0.66	0.41



# Alt Model-Shift Uniqueness Test

009791112-01, P = 1.256891 Days, E = 130.811846 Days

Pri	Sec	Ter	Pos	FA <sub>1</sub>	FA <sub>2</sub>	F <sub>Red</sub>	Pri-Ter	Pri-Pos	Sec-Ter	Sec-Pos	Odd-Evn	DMM	Shape	TAT
12.5	10.8	10.0	0	4.49	1.46	5.62	2.43	12.5	0.77	10.8	0.74	1.03	0.32	1.05





### Stellar Parameters For KIC 009791112

	$T_{\text{eff}}(K)$	$\log(g)$	[Fe/H]	$R$ ( $R_{\odot}$ )	$M(M_{\odot})$	$\rho_{\star}$ ( $\text{g}\cdot\text{cm}^{-3}$ )
	$7335^{+233}_{-311}$	$4.109^{+0.180}_{-0.162}$	$-0.400^{+0.300}_{-0.300}$	$1.719^{+0.504}_{-0.413}$	$1.383^{+0.220}_{-0.220}$	$0.384^{+0.387}_{-0.180}$
	+3%/-4%	+4%/-4%	+75%/-75%	+29%/-24%	+16%/-16%	+101%/-47%
Source	KIC0	KIC0	KIC0	DSEP		

KIC = Kepler Input Catalog; PHO = Photometry; SPE = Spectroscopy; AST = Asteroseismology  
 TRA = Transits; DESP = Dartmouth Models; MULT = Multiple Models

### Secondary Eclipse Parameters for KIC 009791112-01 / KOI

Detrend	Depth (ppm)	$R_p$ ( $R_{\oplus}$ )	$T_{\text{max}}$ (K)	$T_{\text{obs}}$ (K)	$A_{\text{obs}}$
DV	$14 \pm 14$	$2.55^{+0.67}_{-0.62}$	$3685^{+269}_{-263}$	$-4261^{+804}_{-637}$	$-0.708^{+0.720}_{-1.031}$
Alt.	$-262 \pm 24$	$3.27^{+0.85}_{-0.65}$	$3695^{+265}_{-257}$	$6889^{+788}_{-685}$	$8.612^{+4.848}_{-3.014}$

$T_{\text{max}}$  = Theoretical Maximum Planetary Temperature

$T_{\text{obs}}$  = Observed Planetary Temperature (Assuming  $A=0.3$ )

$A_{\text{obs}}$  = Observed Albedo (Assuming  $T=0$ )

If a secondary eclipse is present, the system is likely an EB if  $T_{\text{obs}} \gg T_{\text{max}}$  AND  $A_{\text{obs}} \gg 1.0$

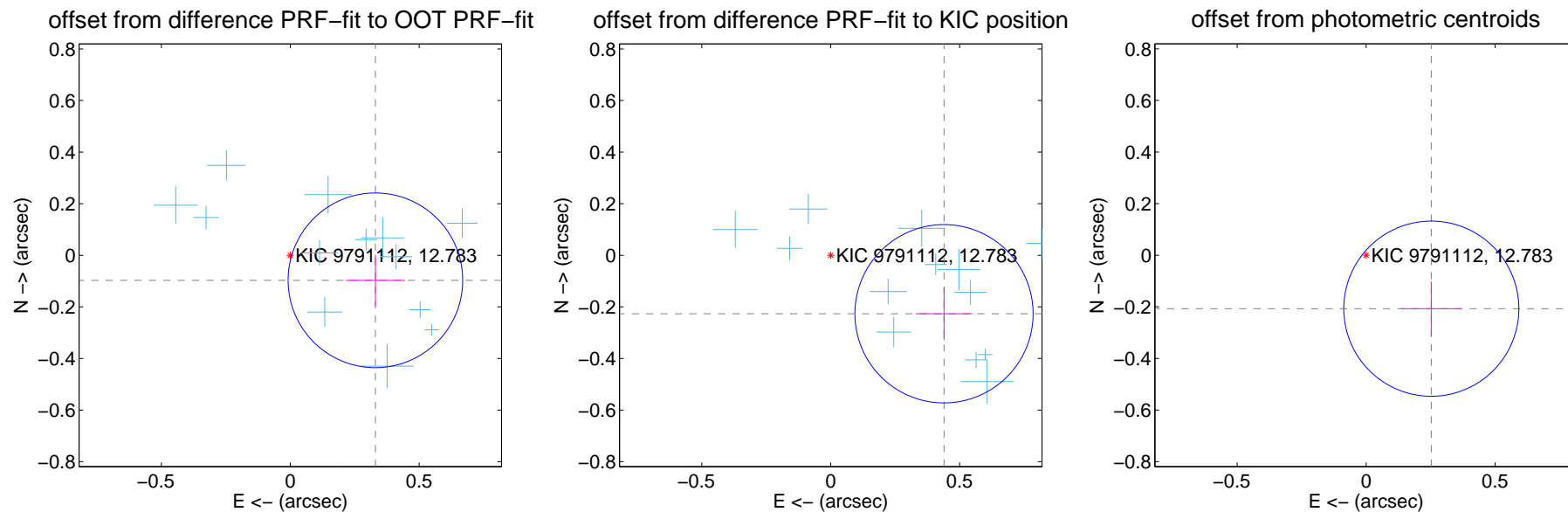
## DV Centroid Data

Supplemental centroid analysis for 009791112-01. Kepler magnitude: 12.78. Transit SNR 11.10

There are 14 quarters with good PRF difference image offsets

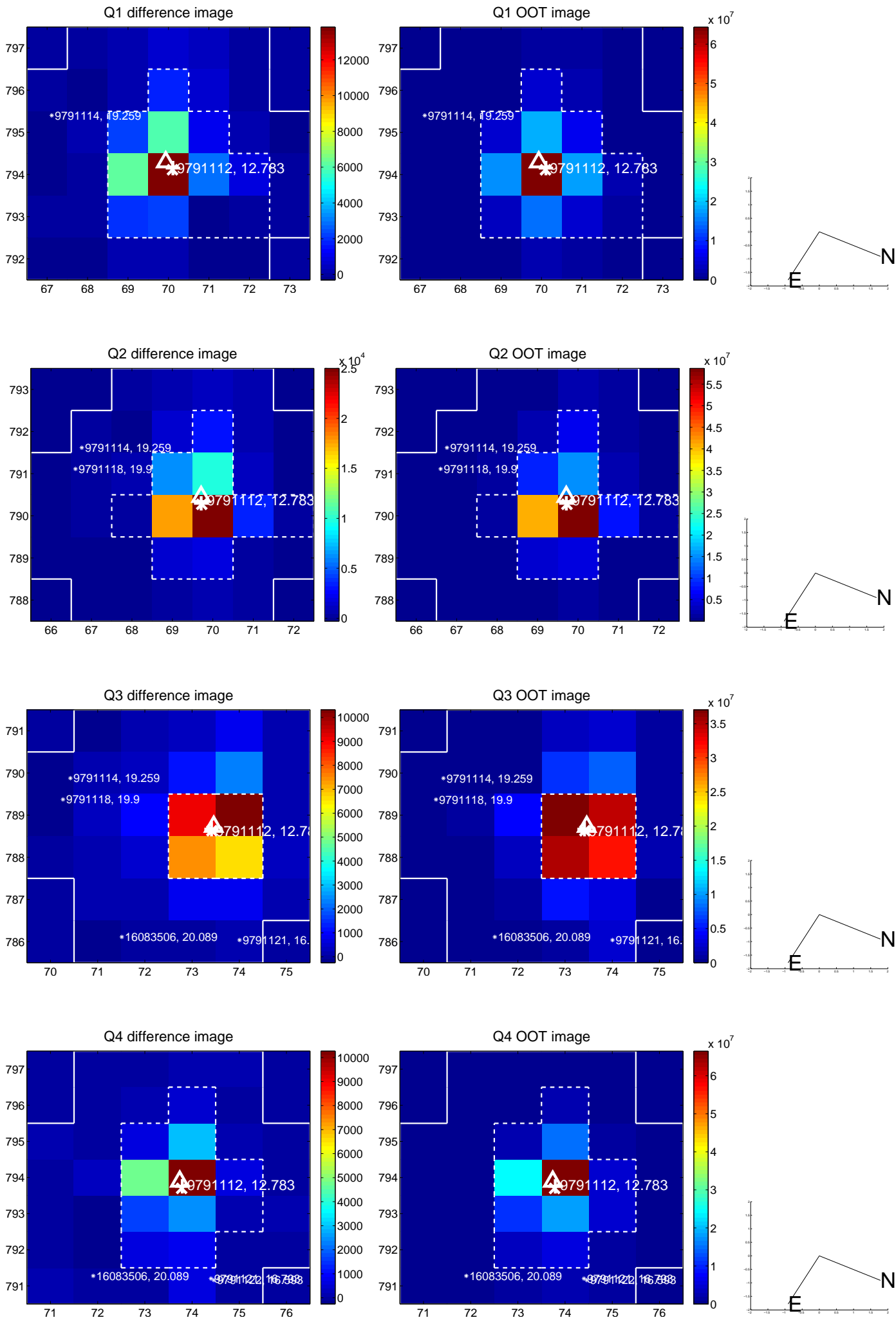
The direct PRF centroid is offset from the target star catalog position by about 0.21 arcsec

	Distance in arcsec	Distance / $\sigma$	$\Delta$ RA	$\Delta$ Dec
PRF-fit source offset from OOT	$0.344 \pm 0.113$	3.05	$-0.330 \pm 0.114$	$-0.097 \pm 0.100$
PRF-fit source offset from KIC position	$0.495 \pm 0.115$	4.29	$-0.439 \pm 0.109$	$-0.227 \pm 0.102$
photometric centroid source offset	$0.33 \pm 0.11$	2.89	$-0.25 \pm 0.12$	$-0.21 \pm 0.11$

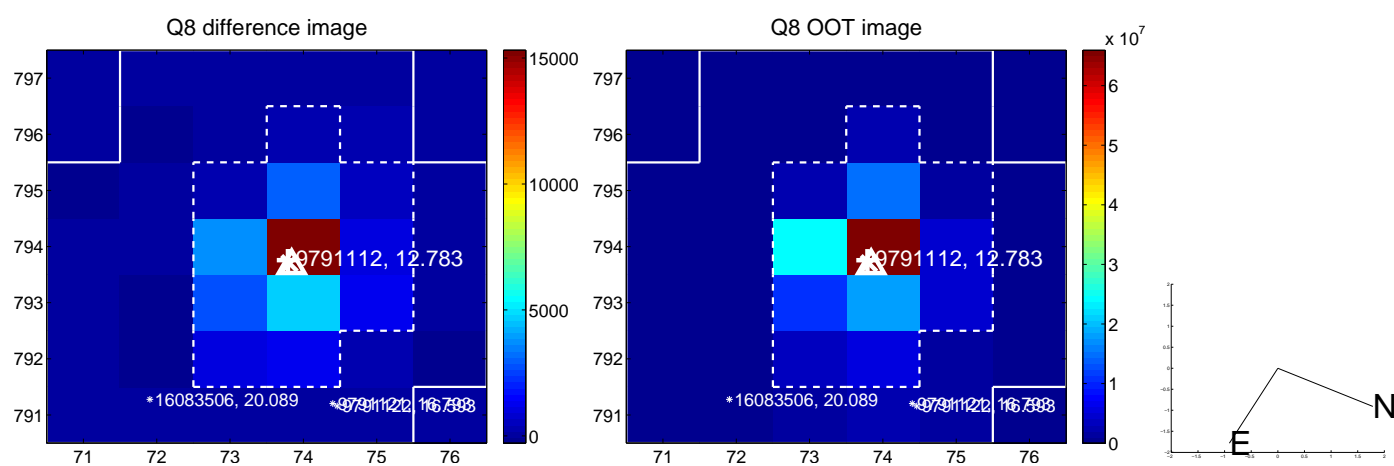
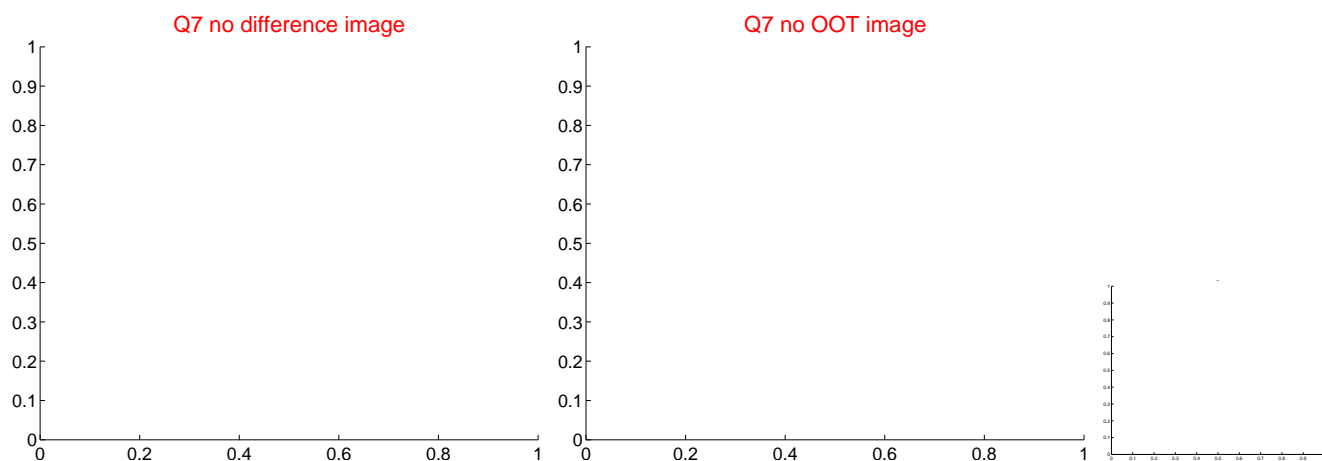
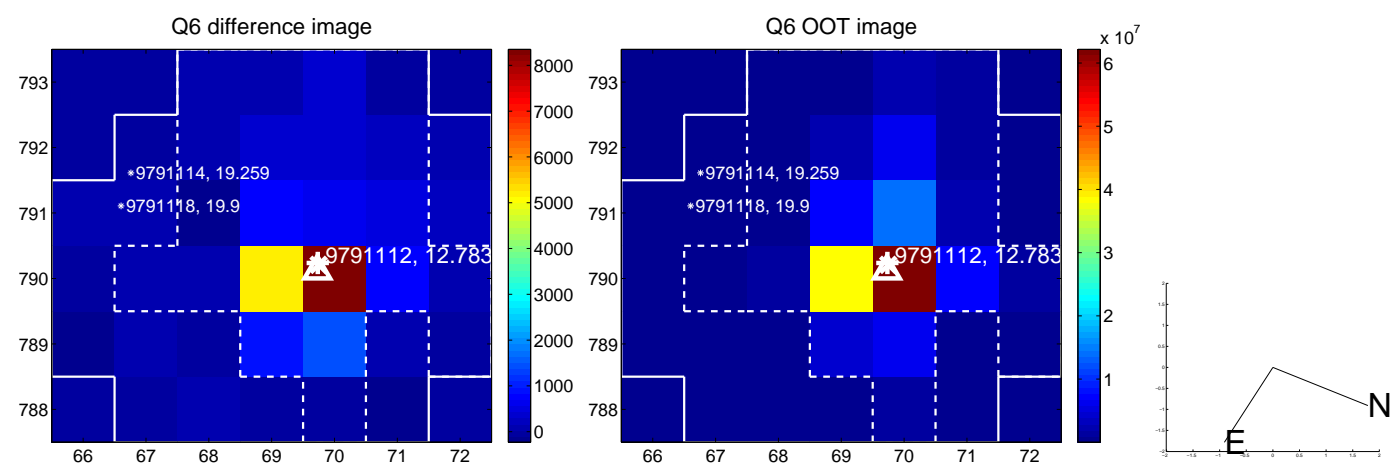
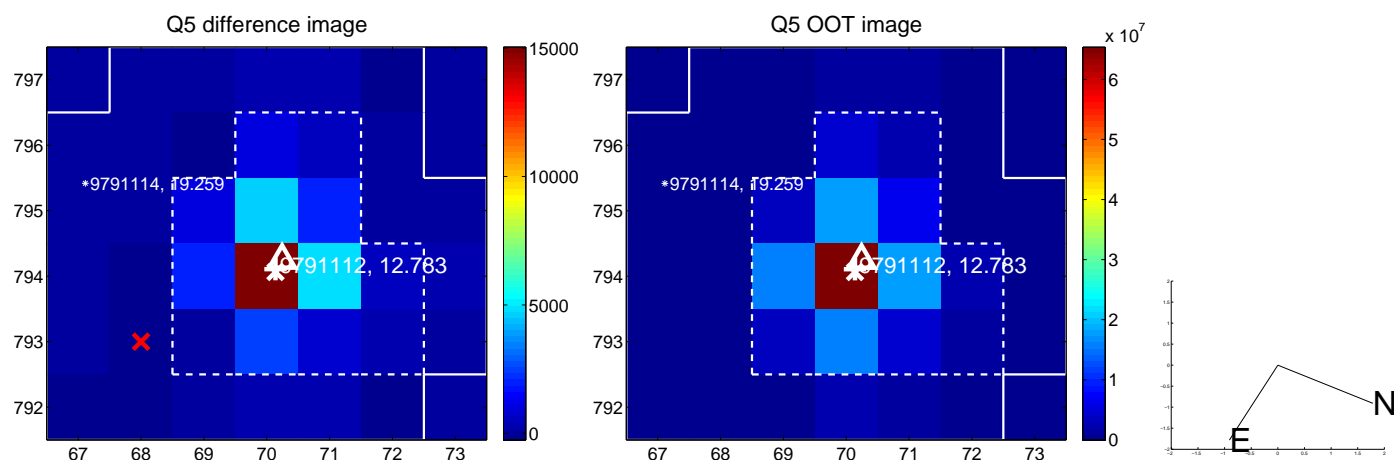


Centroid source offsets from the target star reconstructed from PRF and photometric centroids. **Sky blue crosses:** good quarterly centroid offsets; **Vermillion crosses:** bad quarterly centroid offsets; magenta cross: average over quarters. Length of the crosses: one- $\sigma$  uncertainty. Blue circle: three- $\sigma$ . Red \*: target star. Blue \*: Other stars. Text next to a star gives its KIC ID and kepmag. KIC IDs > 15,000,000 are from the UKIRT catalog.

white  $\times$ : KIC target position; +: OOT centroid;  $\triangle$ : difference centroid. red  $\times$ : large negative pixel value.

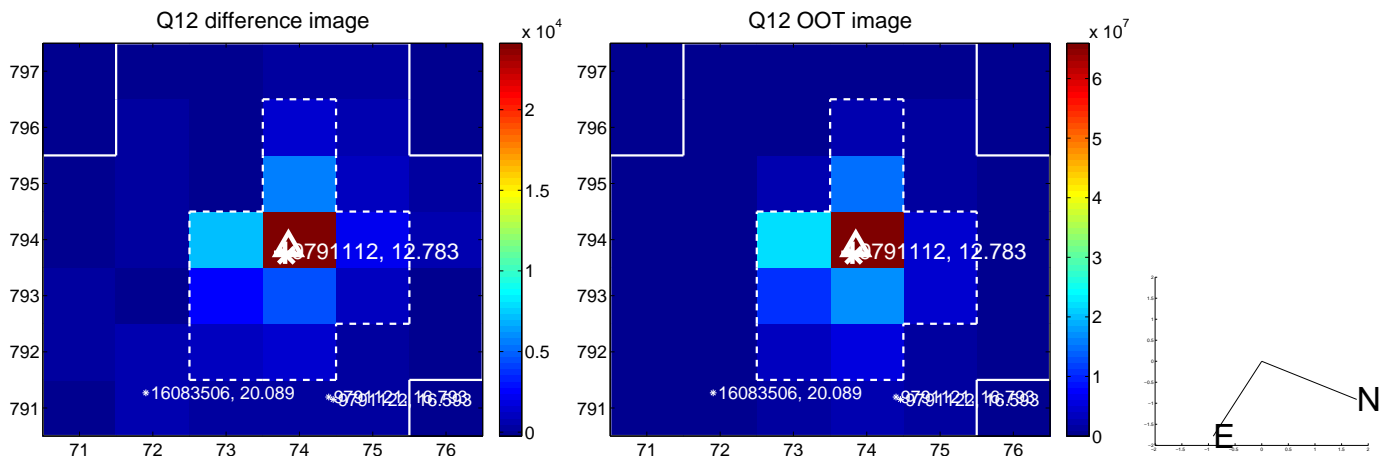
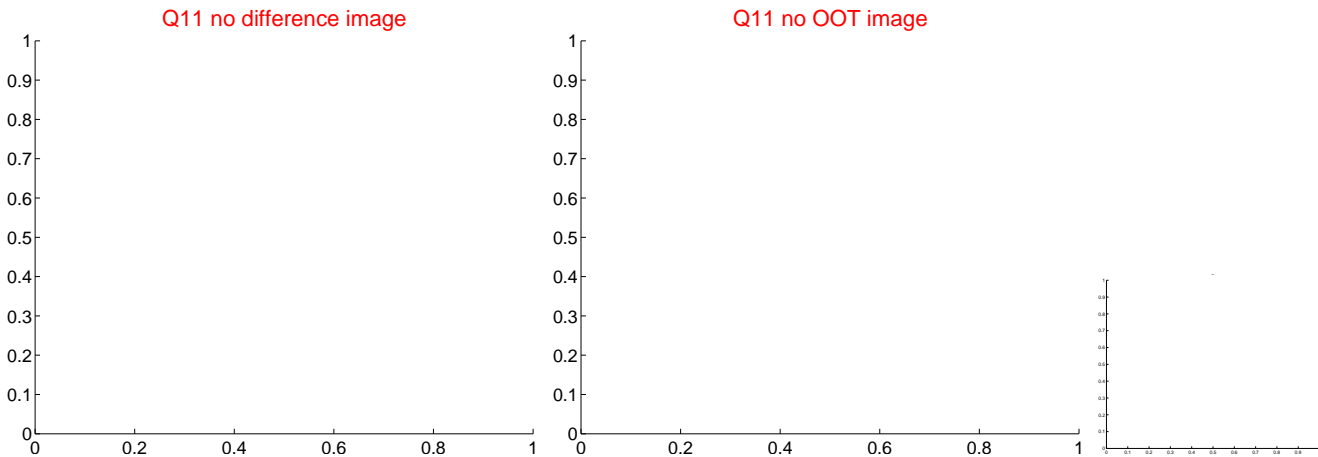
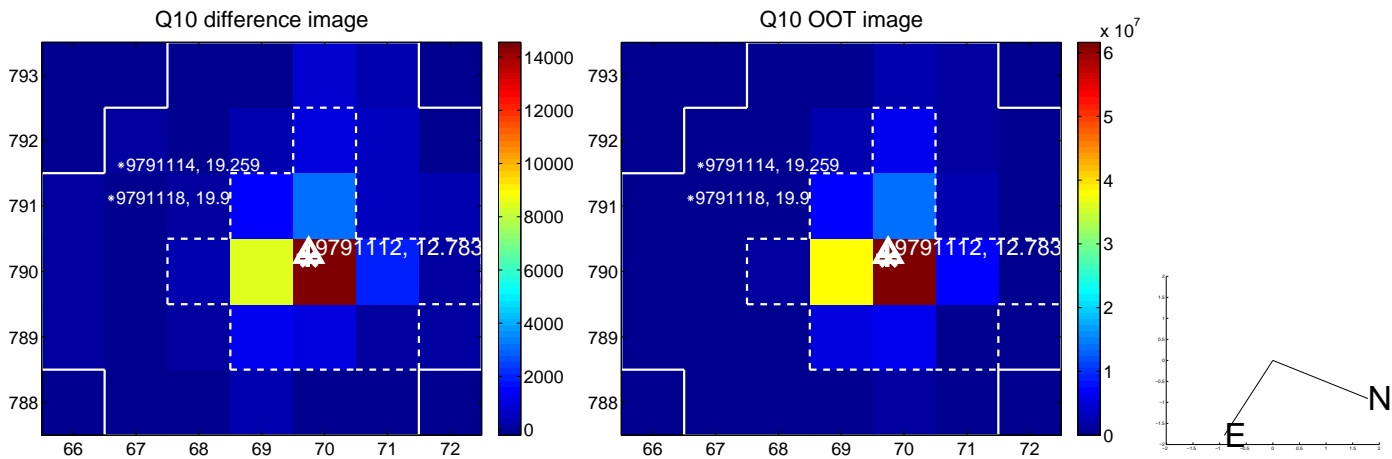
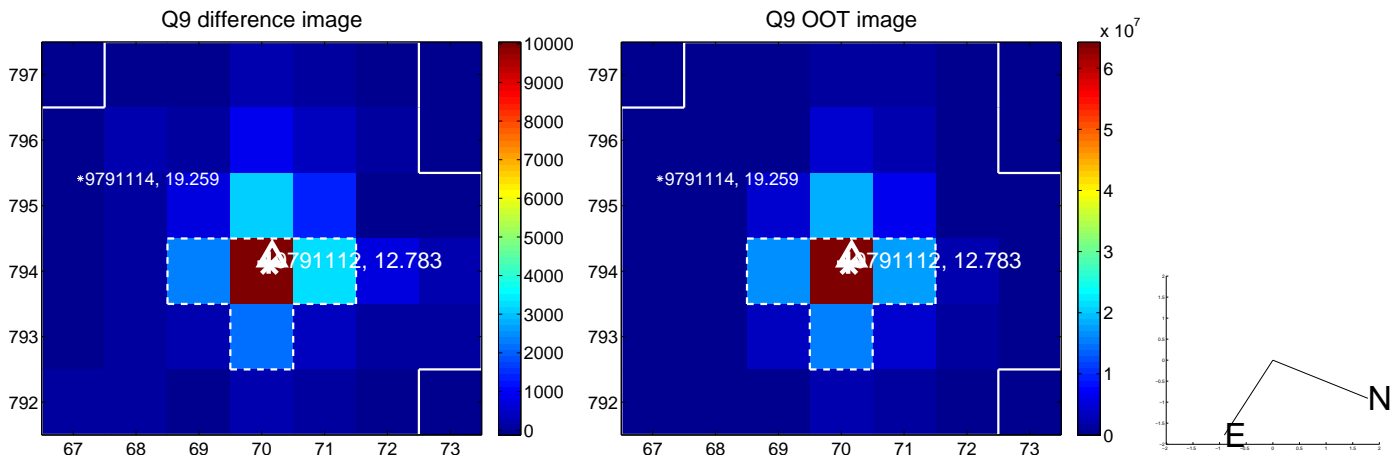


white  $\times$ : KIC target position;  $+$ : OOT centroid;  $\triangle$ : difference centroid. red  $\times$ : large negative pixel value.

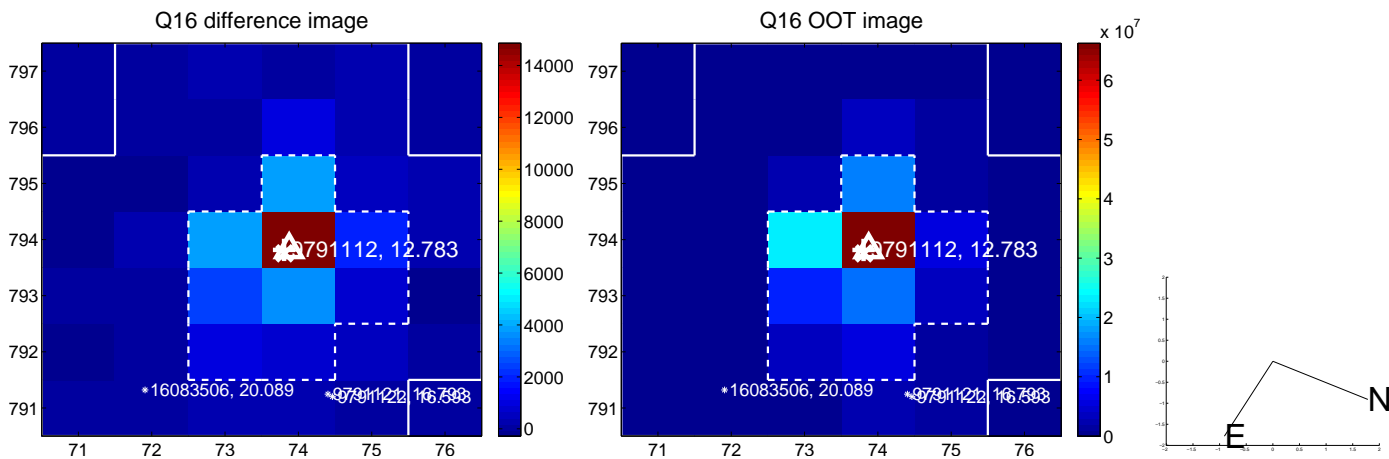
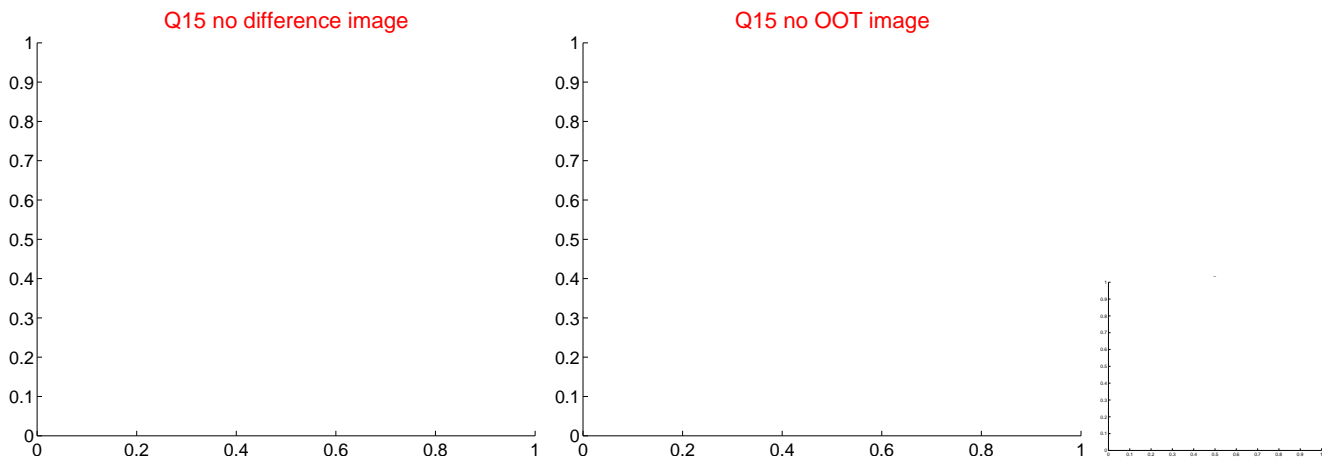
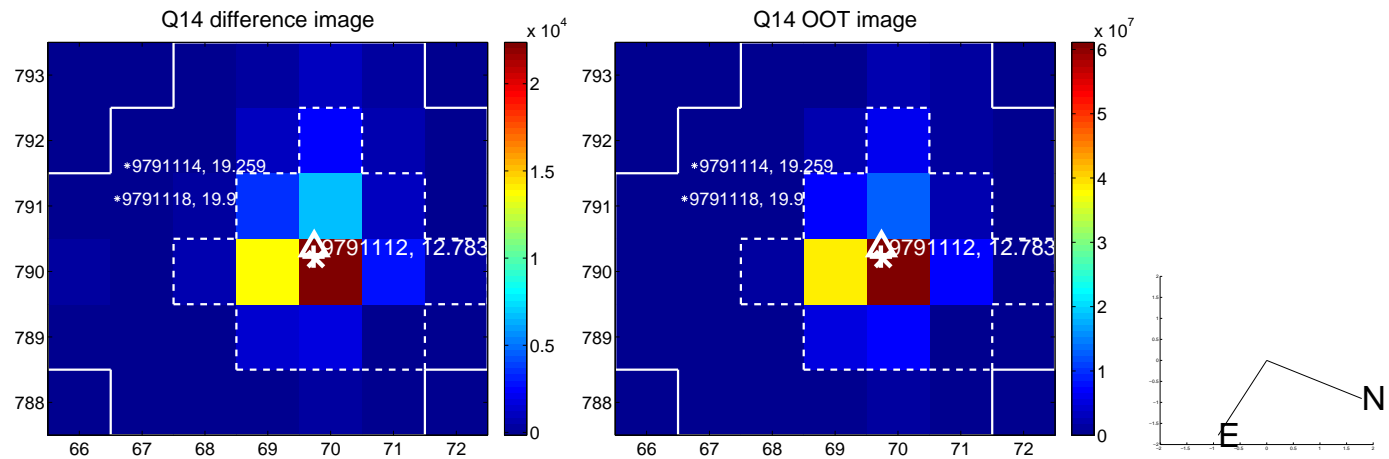
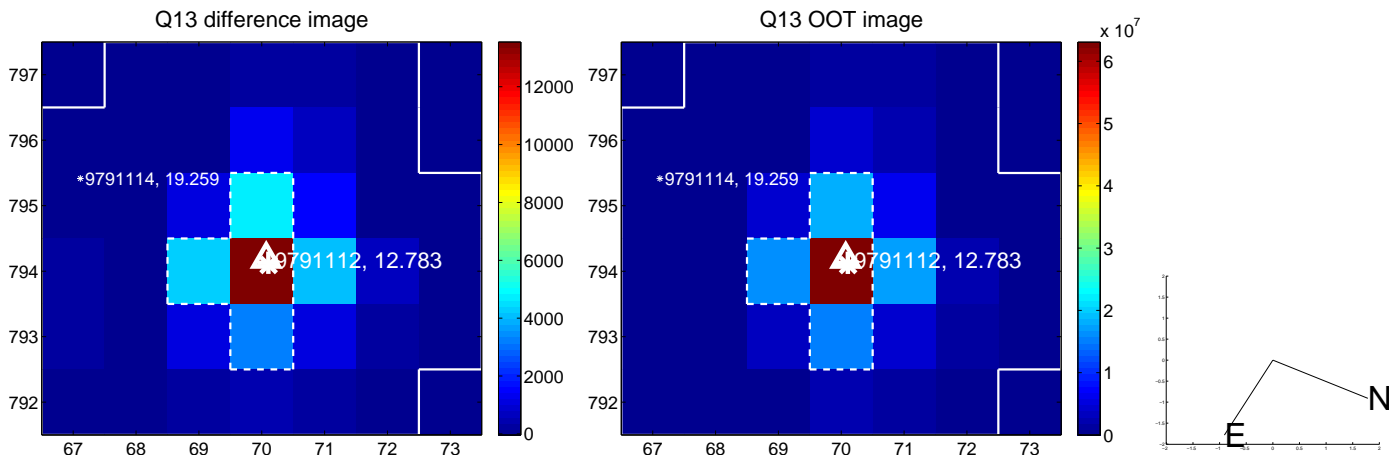




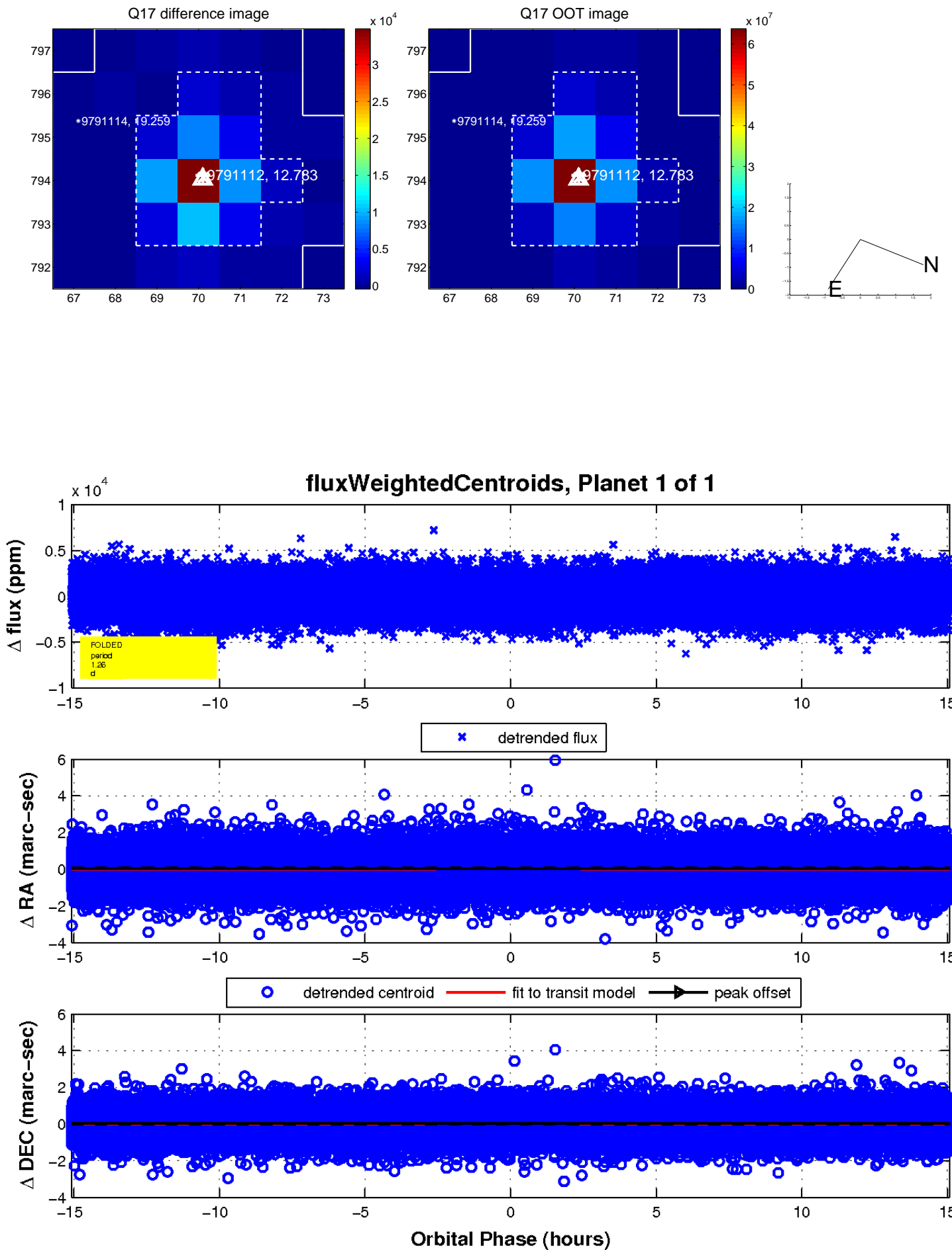
white  $\times$ : KIC target position;  $+$ : OOT centroid;  $\triangle$ : difference centroid. red  $\times$ : large negative pixel value.



white  $\times$ : KIC target position; +: OOT centroid;  $\triangle$ : difference centroid. red  $\times$ : large negative pixel value.



white  $\times$ : KIC target position;  $+$ : OOT centroid;  $\triangle$ : difference centroid. red  $\times$ : large negative pixel value.



UKIRT Image

Declination

