

KIC 009701962

Q1-17 DR25 TCE Parameters

TCE	Run Type	KOI?	Period (Days)	Epoch (BKJD)	Depth (ppm)	Duration (Hours)	MES	SNR	R_{\star} (R_{\odot})	T_{\star} (K)	R_p (R_{\oplus})	S_p (S_{\oplus})
009701962-01	OBS	4617.01	27.478446	148.626947	76.2	8.452	11.1	10.8	1.71	5432	1.70	69.43

Robovetter Results

TCE	Run Type	Disp	Score	N	S	C	E	Comments
009701962-01	OBS	PC	0.90	0	0	0	0	NO_COMMENT

Notes: OBS = Observed. INJ = Injected. INV = Inverted. SCR = Scrambled.

N = Not Transit-Like. S = Stellar Eclipse. C = Centroid Offset. E = Ephemeris Match.

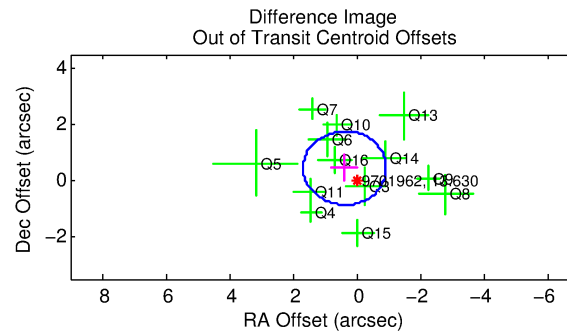
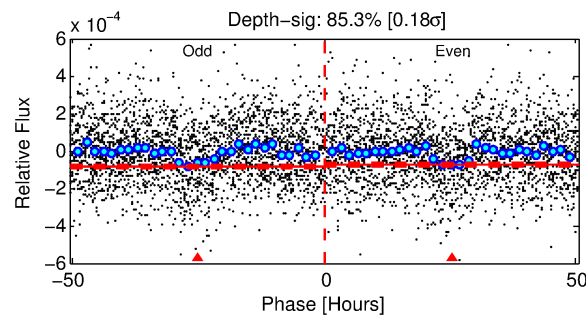
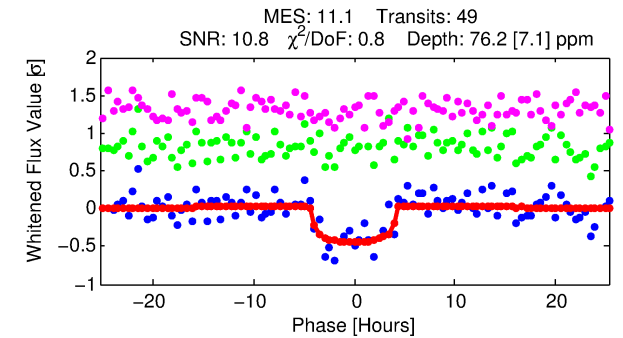
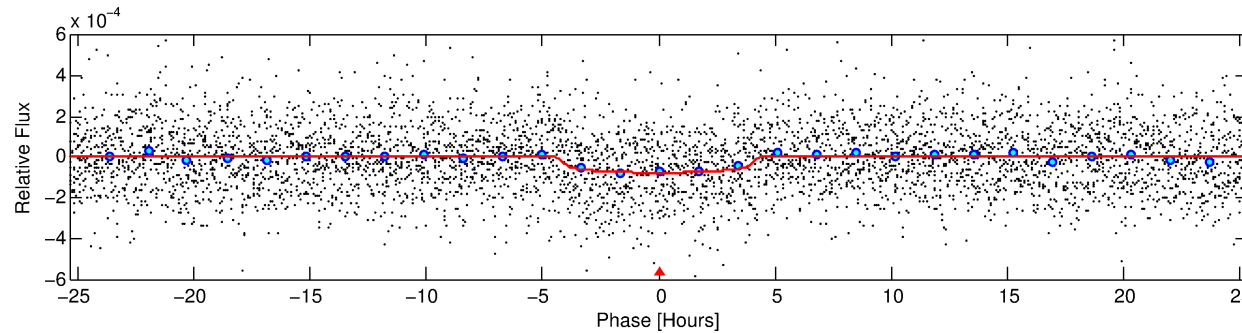
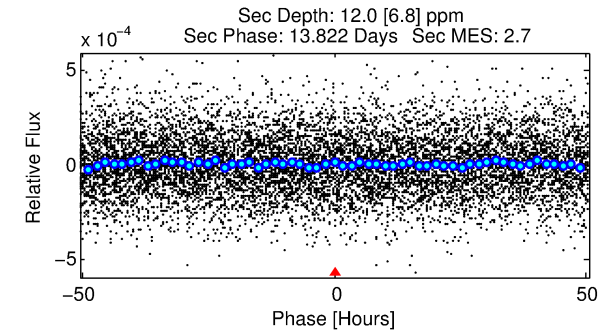
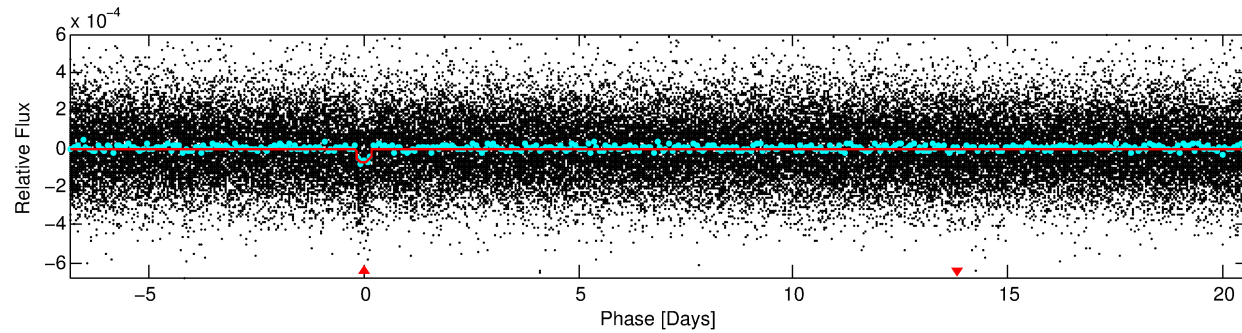
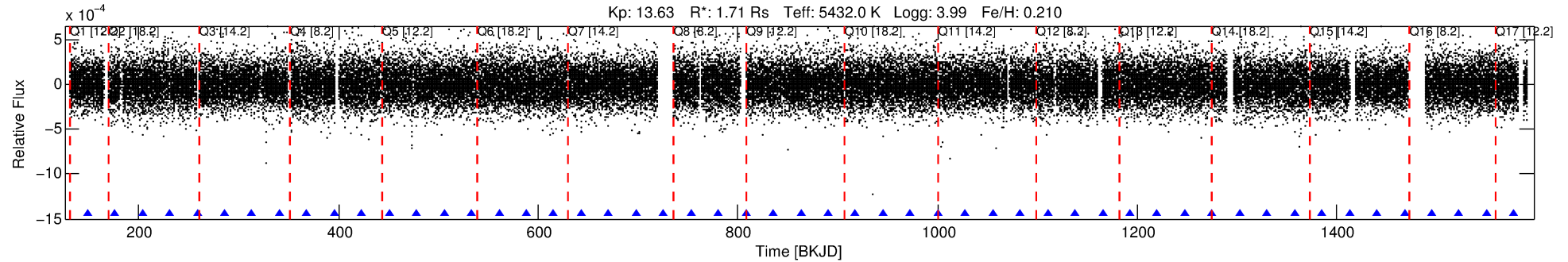
See http://exoplanetarchive.ipac.caltech.edu/docs/API_kepcandidate_columns.html#proj_disp_col for comment definitions.

Ephemeris Match Information For 009701962-01

No Significant Match Found

DV One-Page Summary

KIC: 9701962 Candidate: 1 of 1 Period: 27.478 d
KOI: K04617.01 Corr: 0.987



DV Fit Results:

Period = 27.47845 [0.00044] d
Epoch = 148.6269 [0.0137] BKJD
Rp/R* = 0.0091 [0.0048]
a/R* = 14.16 [31.04]
b = 0.83 [0.82]
Seff = 69.43 [25.88]
Teq = 736 [69] K
Rp = 1.70 [1.00] Re
a = 0.1809 [0.0431] AU
Ag = 75.16 [94.50] [0.78σ]
Teffp = 3351 [1009] K [2.59σ]

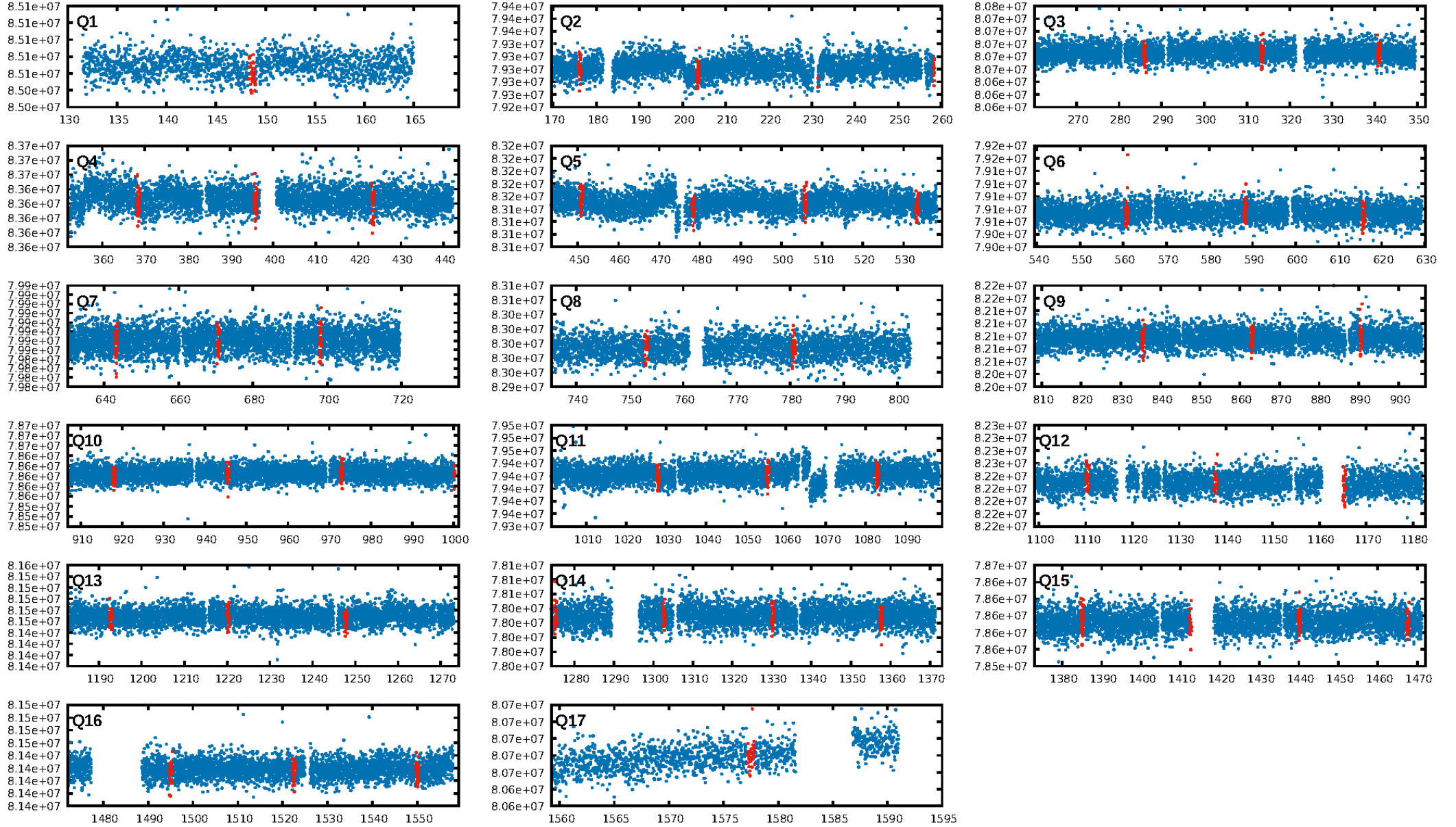
DV Diagnostic Results:

ShortPeriod-sig: N/A
LongPeriod-sig: N/A
ModelChiSquare2-sig: 98.4%
ModelChiSquareGof-sig: 100.0%
Bootstrap-pfa: 5.30e-26
RollingBand-fgt: 1.00 [47/47]
GhostDiagnostic-chr: 3.338
Centroid-sig: 66.9%
Centroid-so: 0.686 arcsec [0.51σ]
OotOffset-rm: 0.583 arcsec [1.34σ]
OotOffset-st: 3/4/3/3 [13]
KicOffset-rm: 0.647 arcsec [1.46σ]
KicOffset-st: 3/4/3/3 [13]
DiffImageQuality-fgm: 0.77 [10/13]
DiffImageOverlap-fno: 1.00 [17/17]

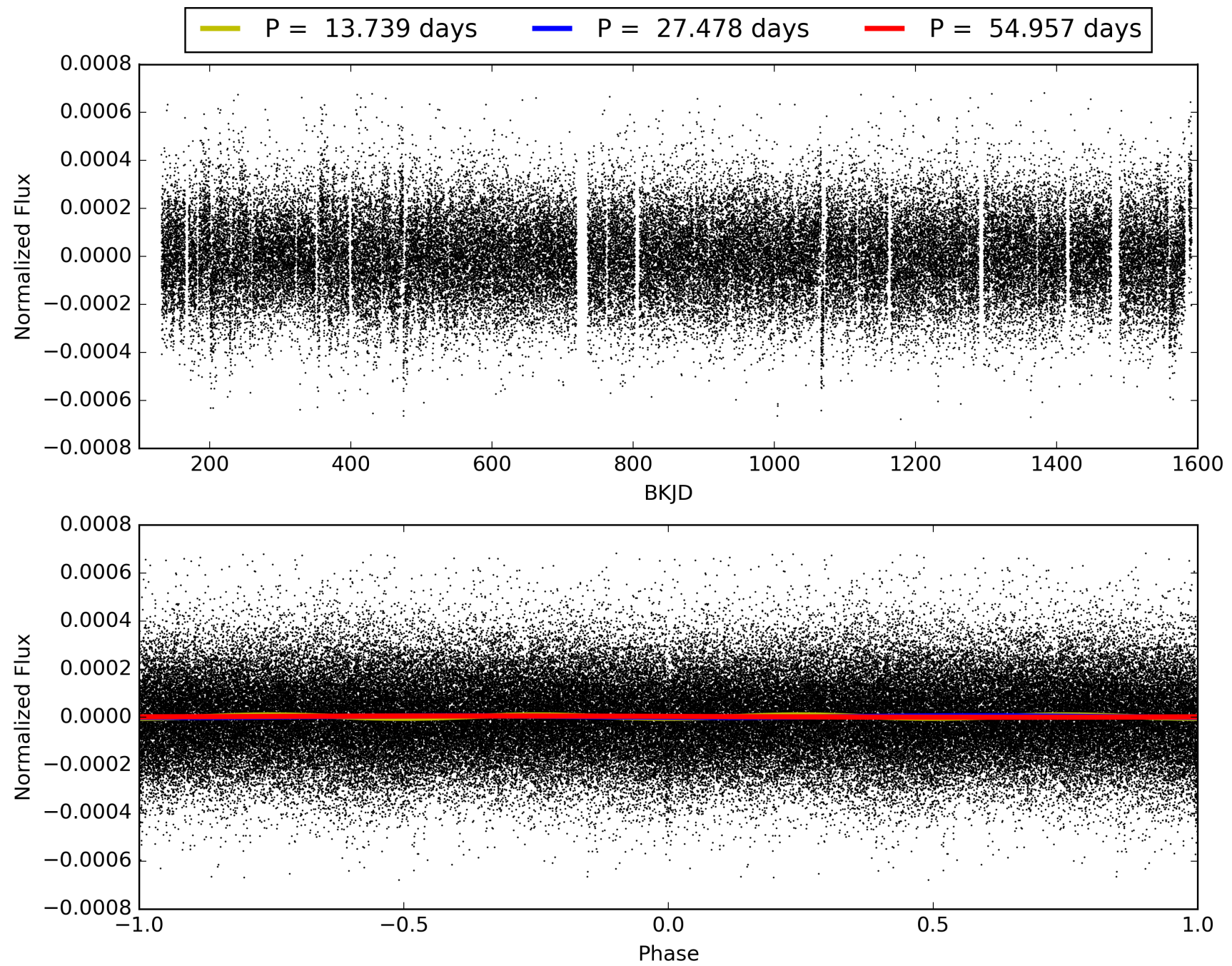
Software Revision: svn+ssh://murzim/repo/soc/tags/release/9.3.42@60958 -- Date Generated: 28-Jan-2016 19:42:51 Z

This Data Validation Report Summary was produced in the Kepler Science Operations Center Pipeline at NASA Ames Research Center

TCE 009701962-01, PDC Light Curves

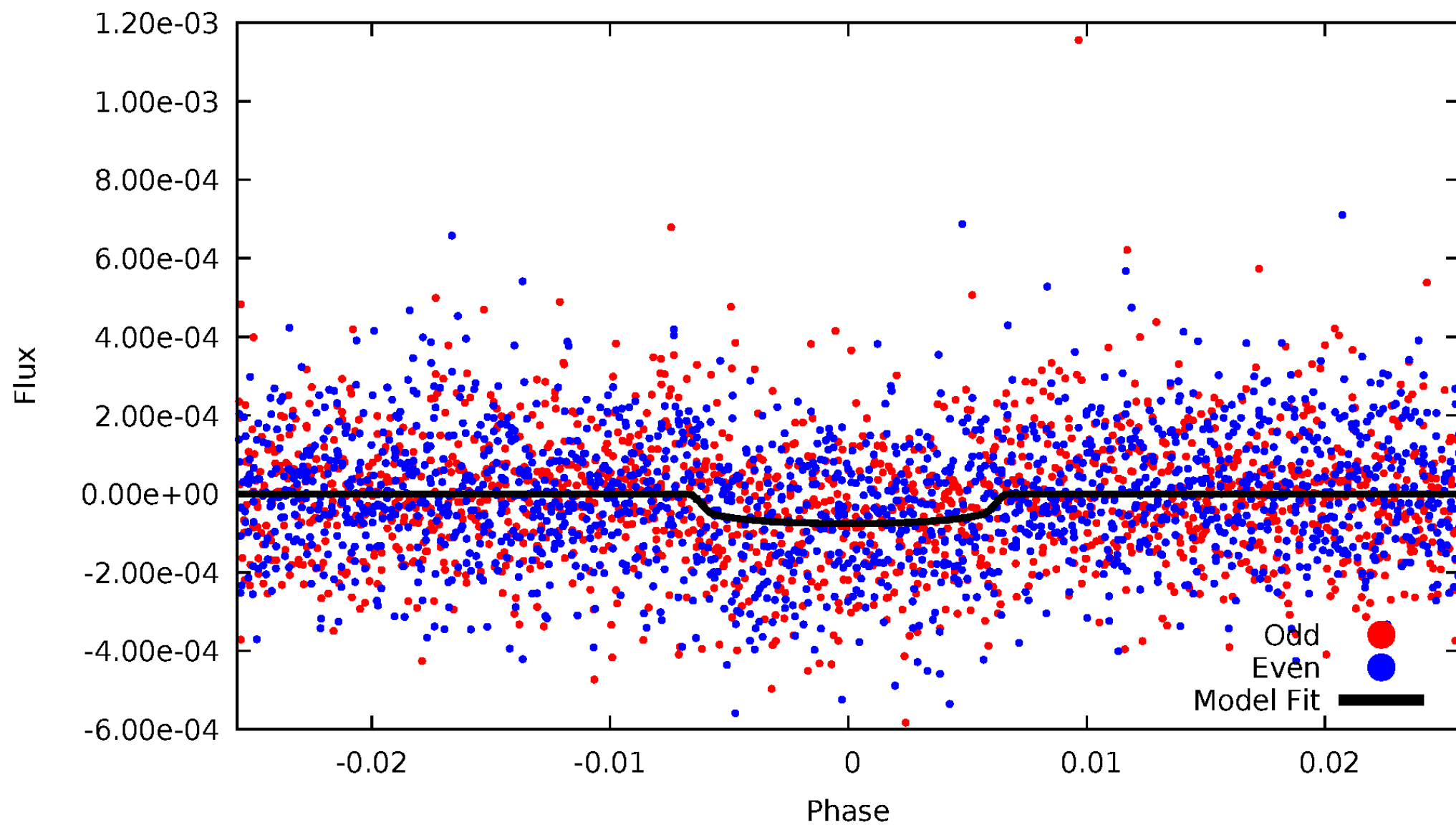


TCE 009701962-01



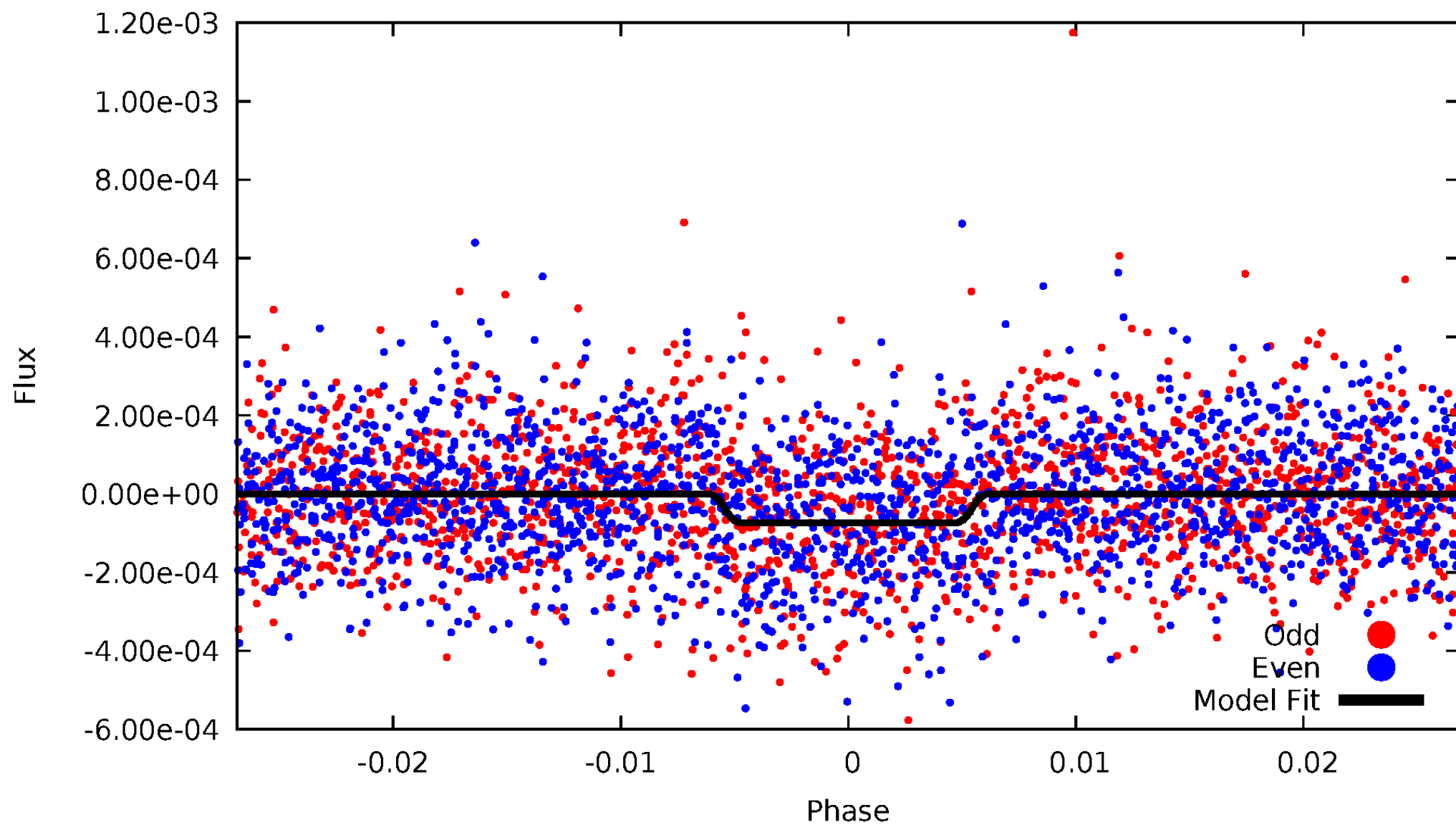
DV Odd/Even

TCE 009701962-01



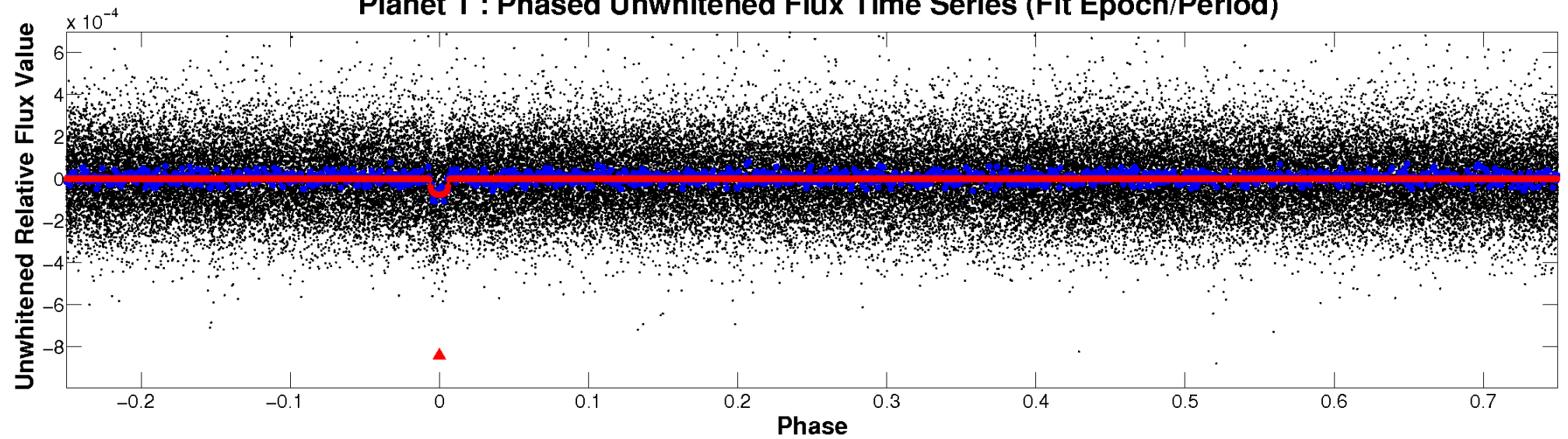
ALT Odd/Even

TCE 009701962-01

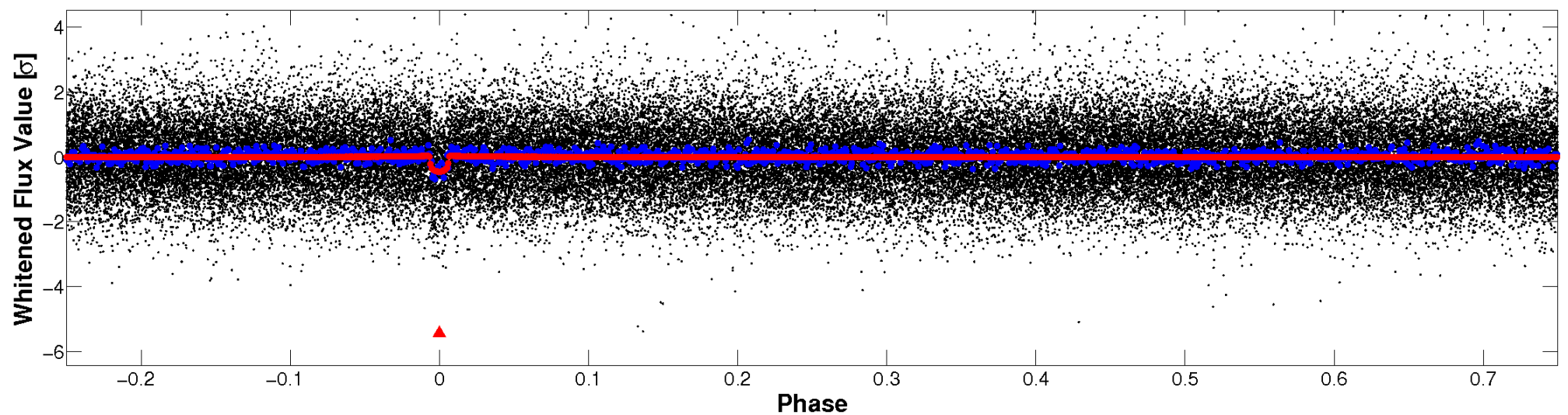


Non-Whitened Vs. Whitened Light Curve

Planet 1 : Phased Unwhitened Flux Time Series (Fit Epoch/Period)

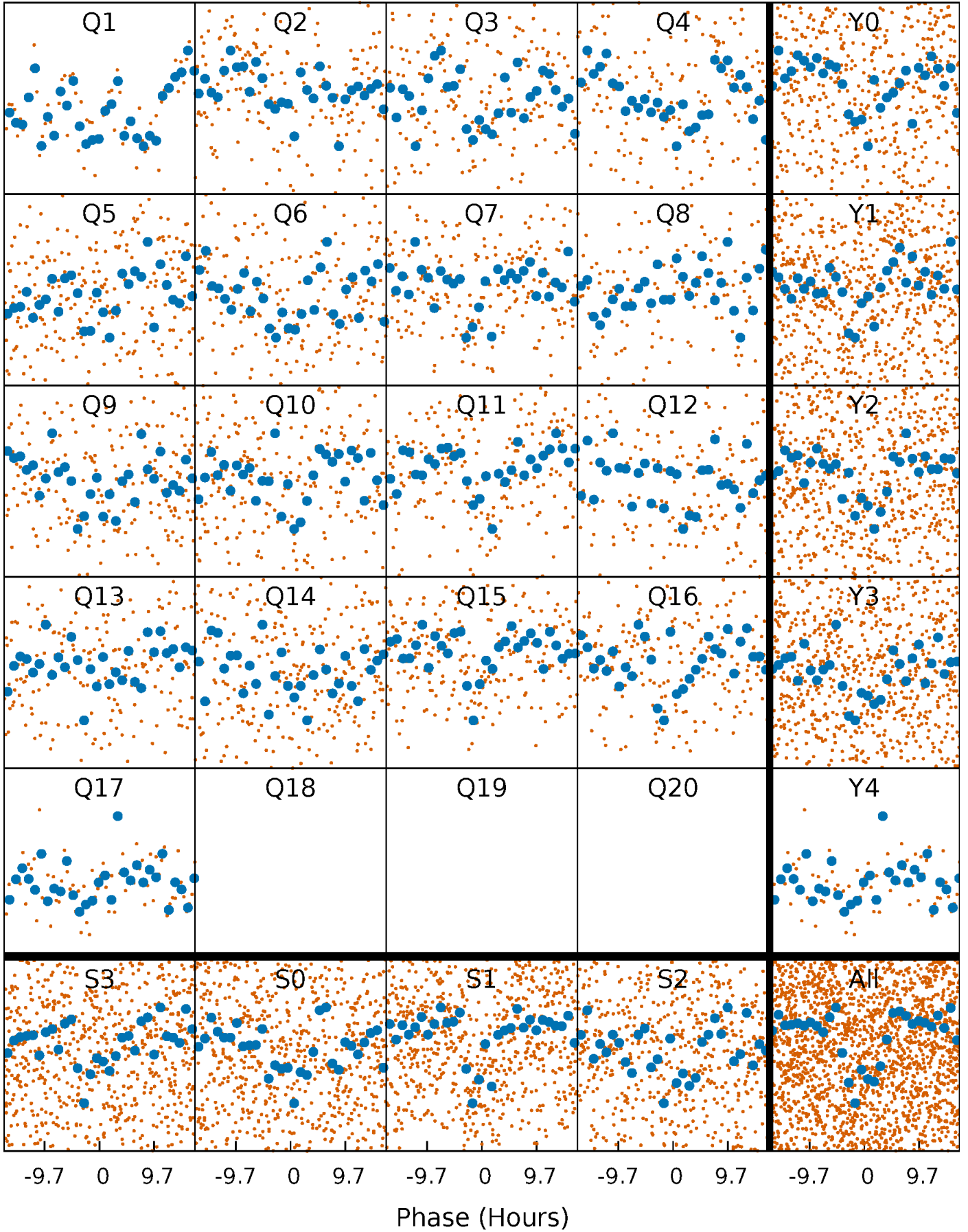


Planet 1 : Phased Whitened Flux Time Series (Fit Epoch/Period)



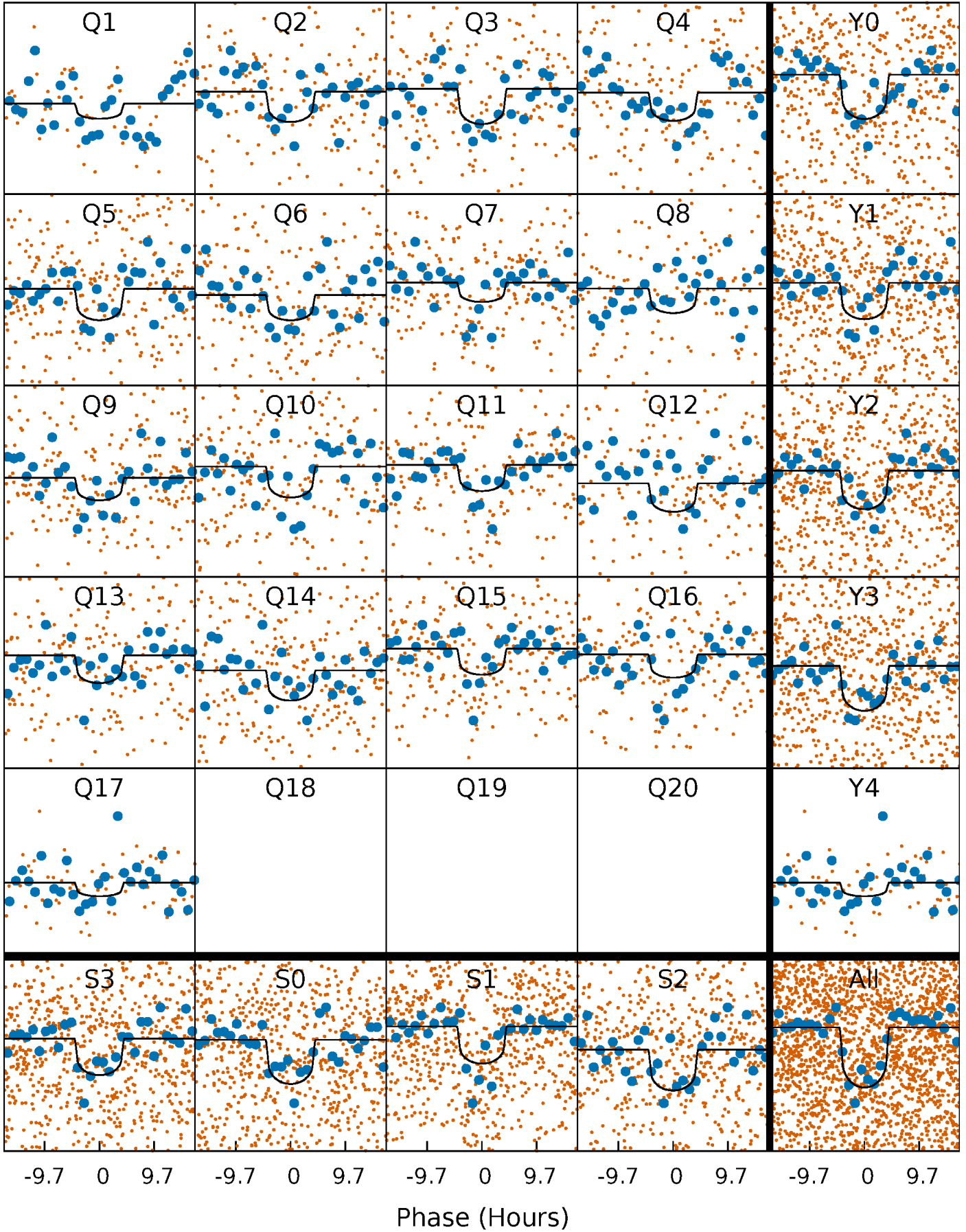
PDC Quarter-Phased Transit Curves

TCE 009701962-01 P= 27.478446 Days $T_0=148.626947$ (BKJD)



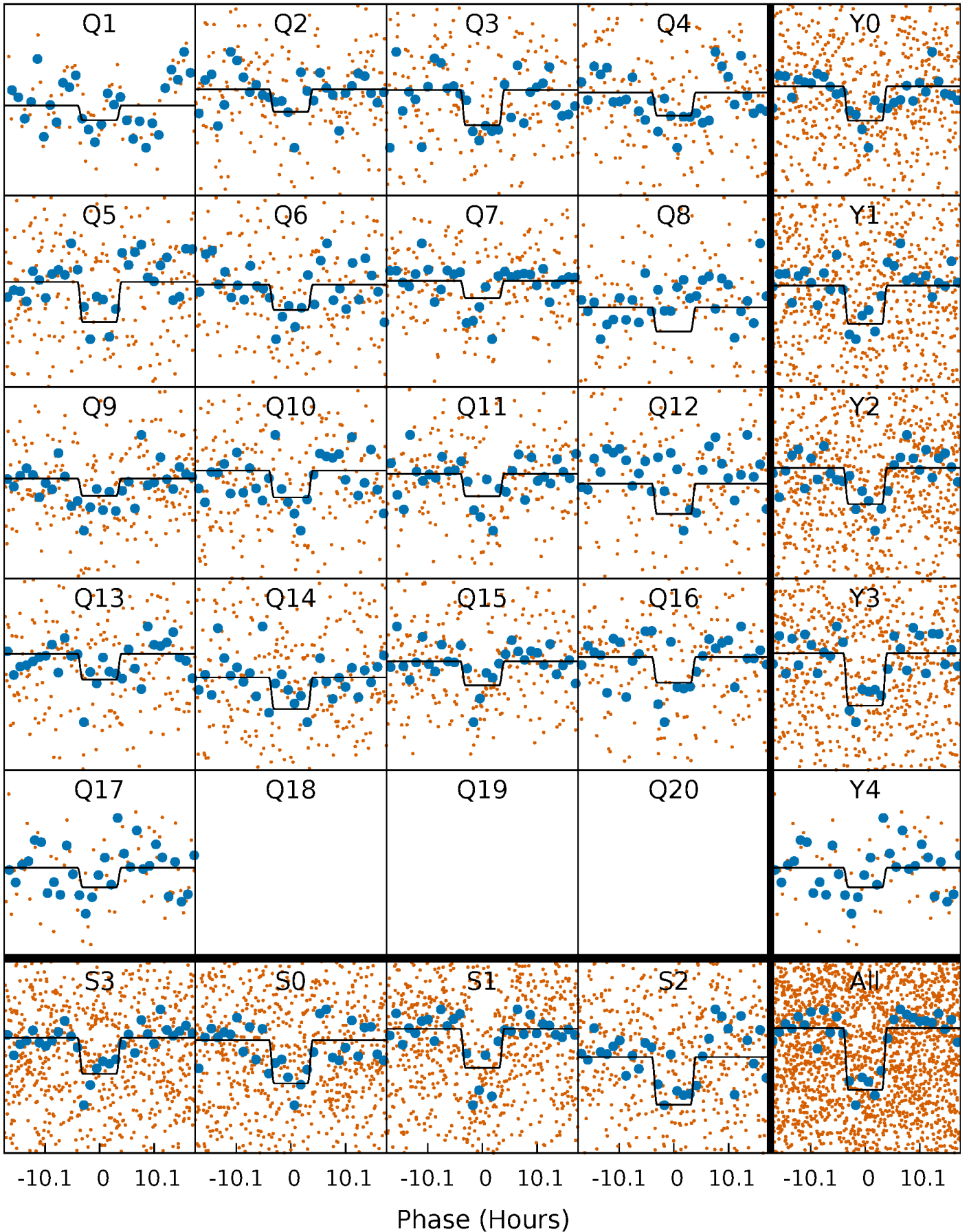
DV Quarter-Phased Transit Curves

TCE 009701962-01 P= 27.478446 Days $T_0=148.626947$ (BKJD)



Alt. Detrend Quarter-Phased Transit Curves

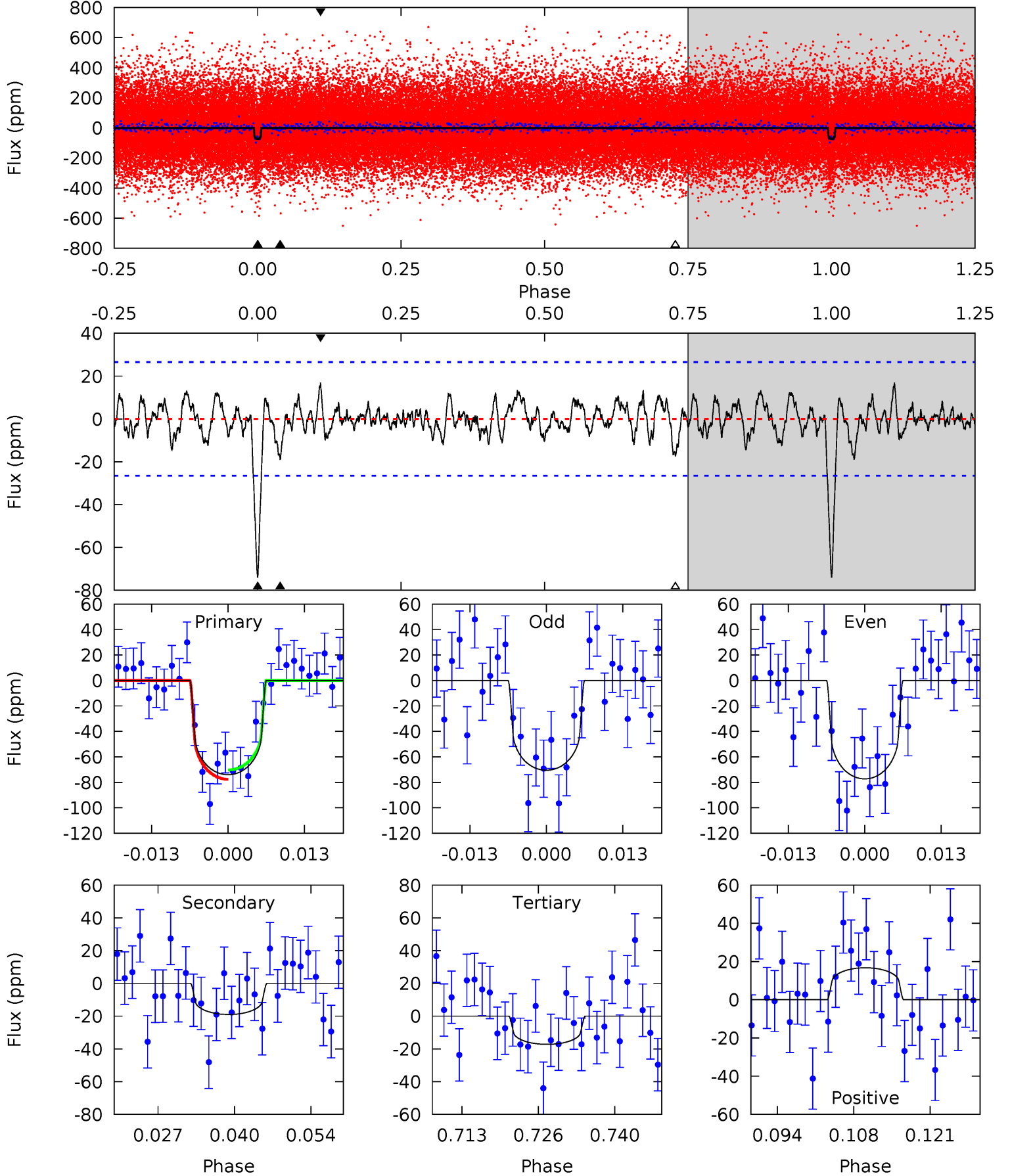
TCE 009701962-01 P= 27.478448 Days $T_0=148.620867$ (BKJD)



DV Model-Shift Uniqueness Test

009701962-01, $P = 27.478446$ Days, $E = 121.148501$ Days

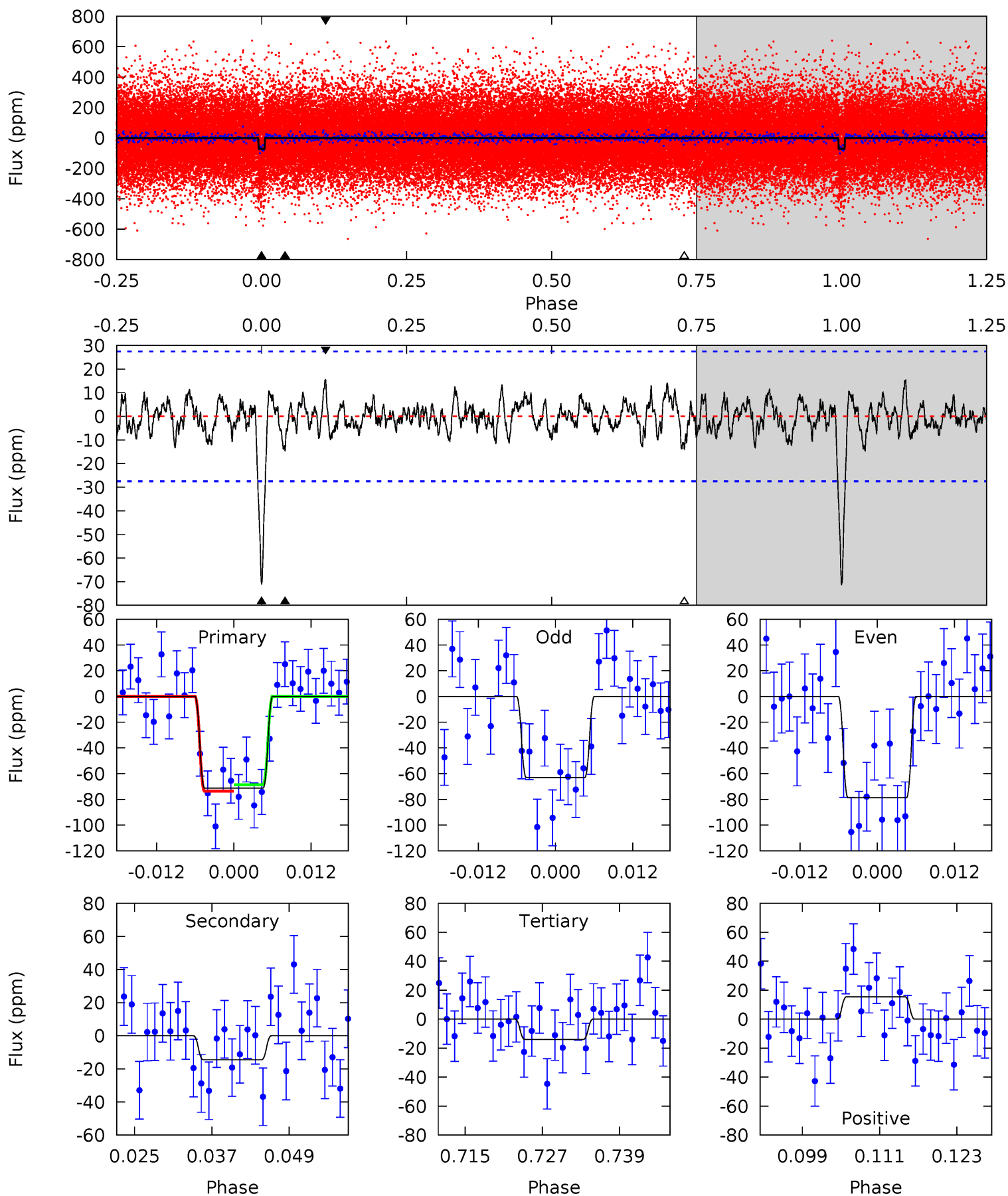
Pri	Sec	Ter	Pos	FA ₁	FA ₂	F _{Red}	Pri-Ter	Pri-Pos	Sec-Ter	Sec-Pos	Odd-Evn	DMM	Shape	TAT
13.9	3.56	3.23	3.14	4.97	2.47	1.09	10.6	10.7	0.33	0.42	0.64	0.96	0.18	0.69



Alt Model-Shift Uniqueness Test

009701962-01, $P = 27.478448$ Days, $E = 121.142419$ Days

Pri	Sec	Ter	Pos	FA ₁	FA ₂	F _{Red}	Pri-Ter	Pri-Pos	Sec-Ter	Sec-Pos	Odd-Evn	DMM	Shape	TAT
12.9	2.63	2.54	2.80	4.99	2.50	0.95	10.4	10.1	0.09	-0.17	1.43	0.91	0.18	0.44



Stellar Parameters For KIC 009701962

	$T_{\text{eff}}(K)$	$\log(g)$	[Fe/H]	$R (R_{\odot})$	$M(M_{\odot})$	$p_{\star} (\text{g}\cdot\text{cm}^{-3})$
	5432^{+89}_{-65}	$3.993^{+0.210}_{-0.090}$	$0.210^{+0.150}_{-0.100}$	$1.707^{+0.276}_{-0.449}$	$1.046^{+0.093}_{-0.093}$	$0.296^{+0.372}_{-0.088}$
	+2%/-1%	+5%/-2%	+71%/-48%	+16%/-26%	+9%/-9%	+126%/-30%
Source	SPE90	SPE90	SPE90	DSEP		

KIC = Kepler Input Catalog; PHO = Photometry; SPE = Spectroscopy; AST = Asteroseismology
 TRA = Transits; DESP = Dartmouth Models; MULT = Multiple Models

Secondary Eclipse Parameters for KIC 009701962-01 / KOI 4617.01

Detrend	Depth (ppm)	$R_p (R_{\oplus})$	$T_{max} (K)$	$T_{obs} (K)$	A_{obs}
DV	-19 ± 5	$1.72^{+0.87}_{-0.86}$	1023^{+45}_{-60}	3993^{+1149}_{-548}	120^{+300}_{-73}
Alt.	-14 ± 6	$1.60^{+0.91}_{-0.79}$	1021^{+48}_{-69}	3846^{+1159}_{-559}	97^{+307}_{-62}

T_{max} = Theoretical Maximum Planetary Temperature

T_{obs} = Observed Planetary Temperature (Assuming A=0.3)

A_{obs} = Observed Albedo (Assuming T=0)

If a secondary eclipse is present, the system is likely an EB if $T_{obs} \gg T_{max}$ AND $A_{obs} \gg 1.0$

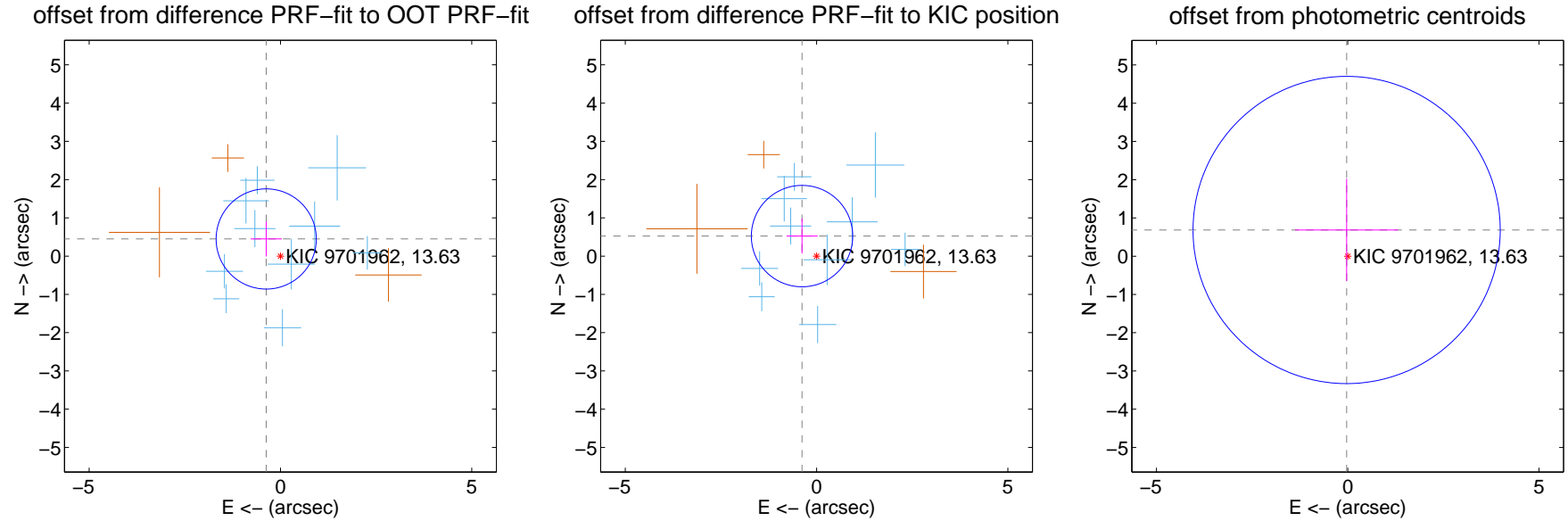
DV Centroid Data

Supplemental centroid analysis for 009701962-01. Kepler magnitude: 13.63. Transit SNR 10.82

There are 10 quarters with good PRF difference image offsets

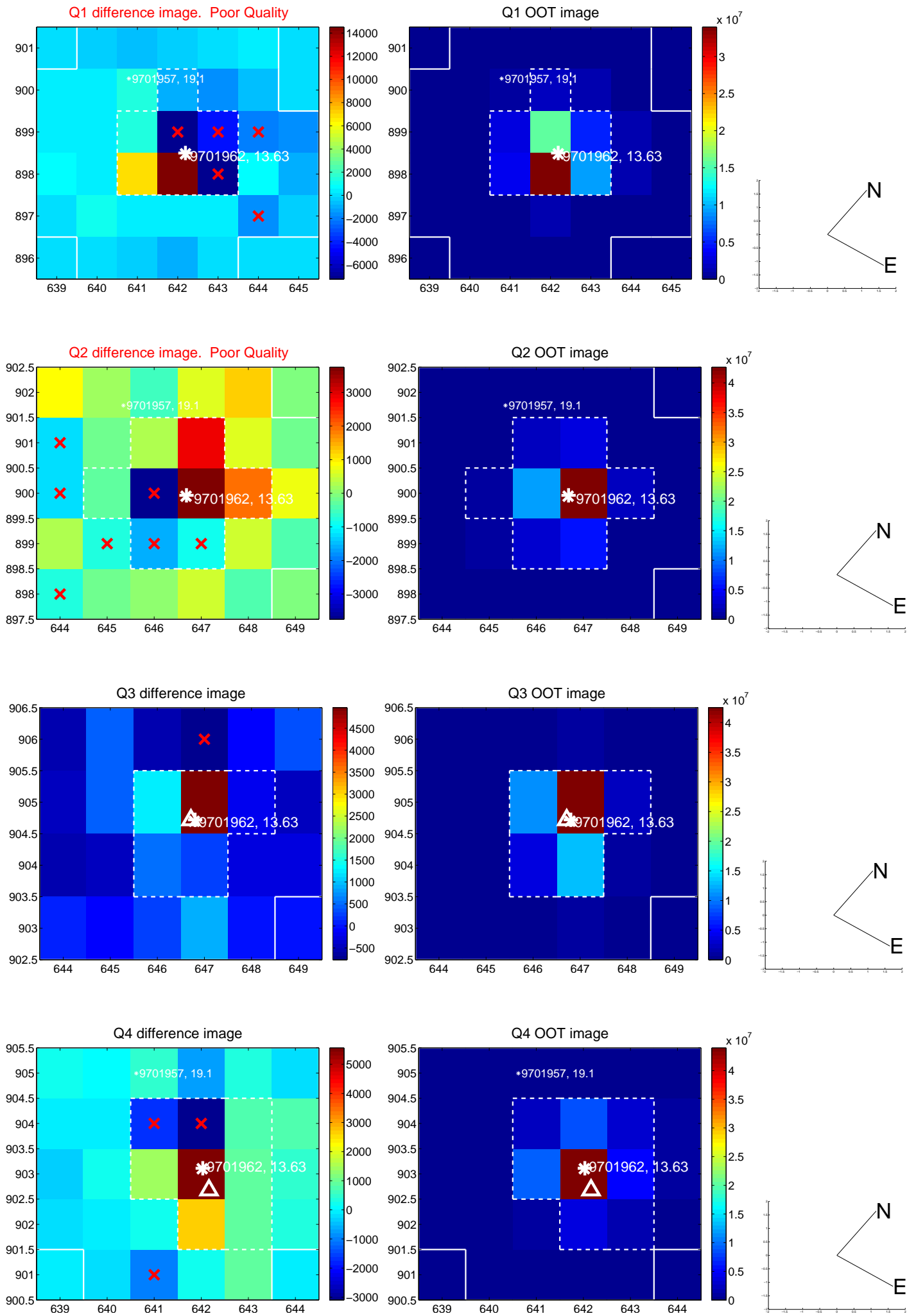
The direct PRF centroid is offset from the target star catalog position by about 0.07 arcsec

	Distance in arcsec	Distance / σ	Δ RA	Δ Dec
PRF-fit source offset from OOT	0.583 ± 0.437	1.34	0.372 ± 0.408	0.449 ± 0.455
PRF-fit source offset from KIC position	0.647 ± 0.442	1.46	0.380 ± 0.410	0.524 ± 0.457
photometric centroid source offset	0.69 ± 1.34	0.51	0.03 ± 1.35	0.69 ± 1.34

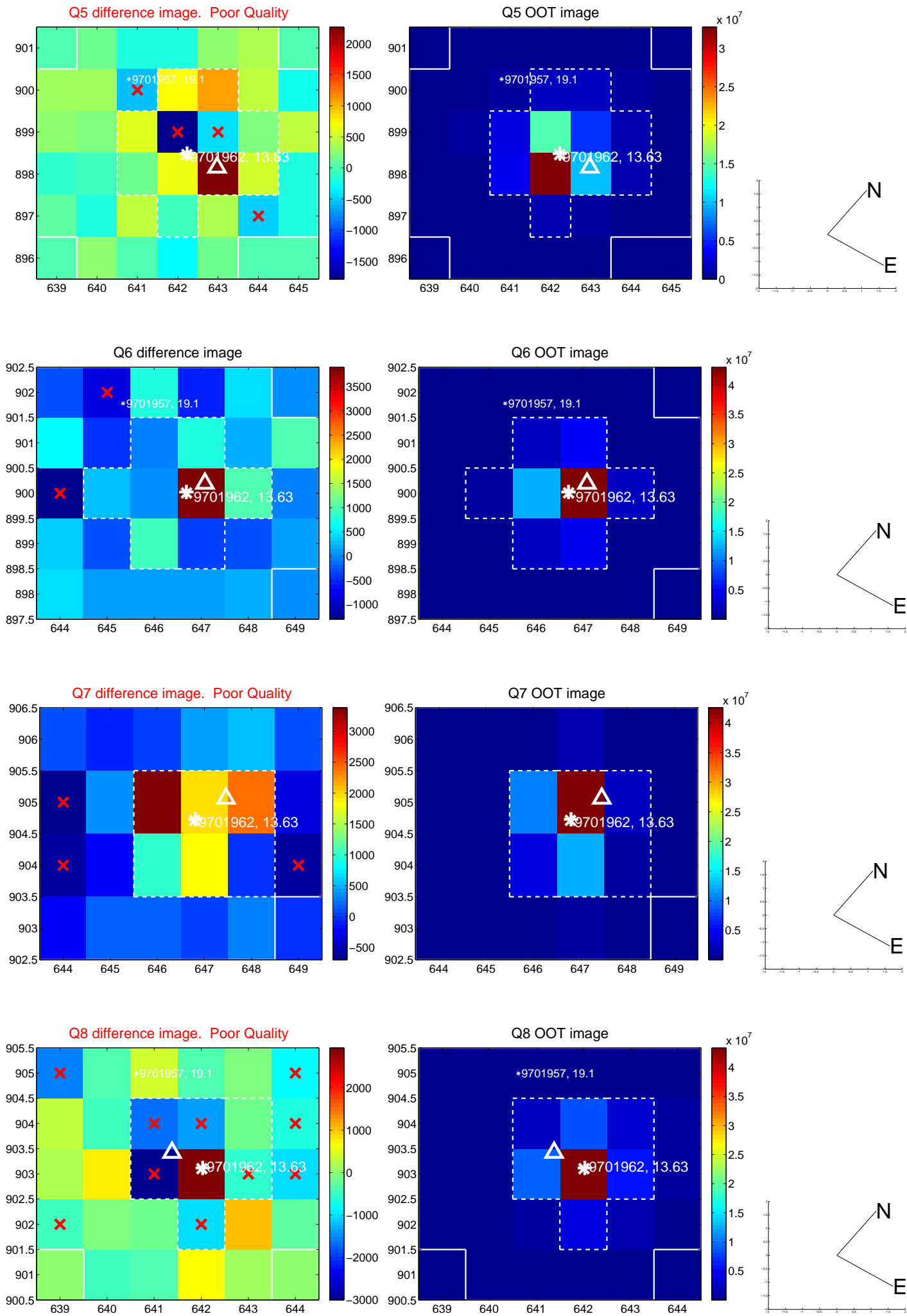


Centroid source offsets from the target star reconstructed from PRF and photometric centroids. **Sky blue crosses: good quarterly centroid offsets**; **Vermillion crosses: bad quarterly centroid offsets**; magenta cross: average over quarters. Length of the crosses: one- σ uncertainty. Blue circle: three- σ . Red *: target star. Blue *: Other stars. Text next to a star gives its KIC ID and kepmag. KIC IDs > 15,000,000 are from the UKIRT catalog.

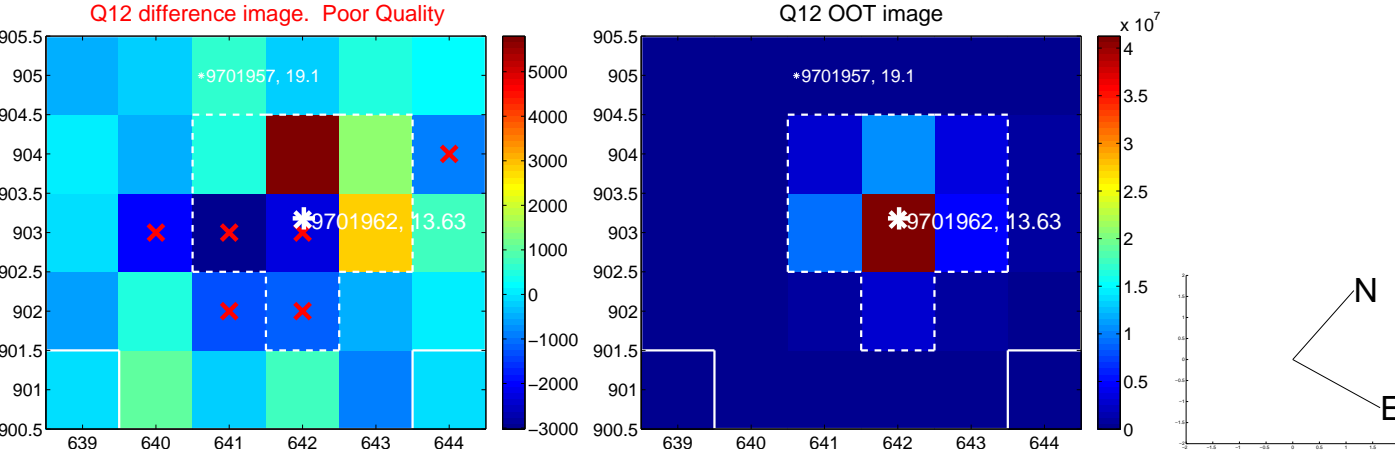
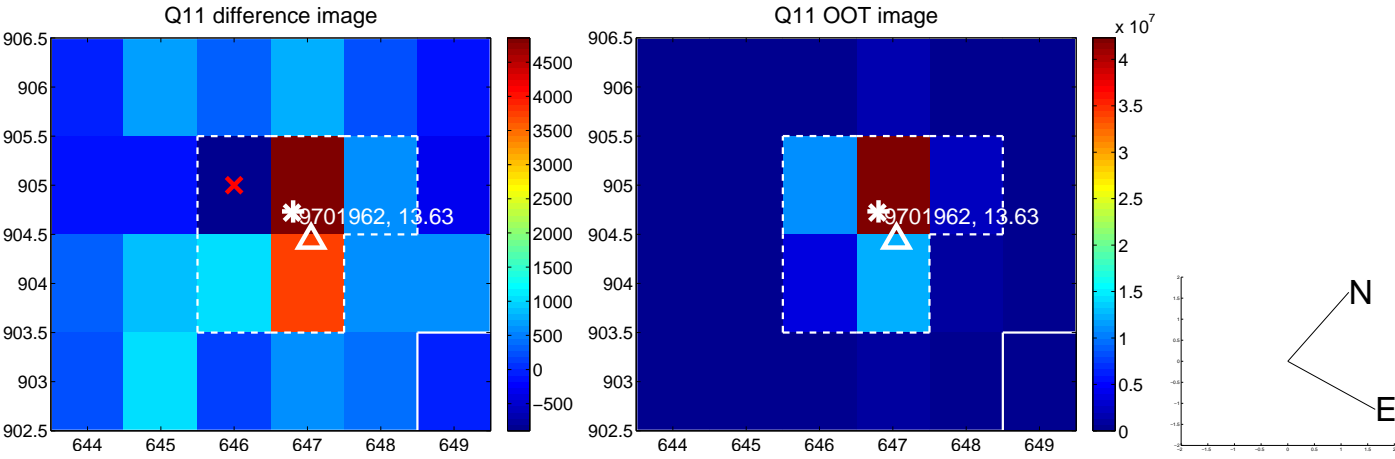
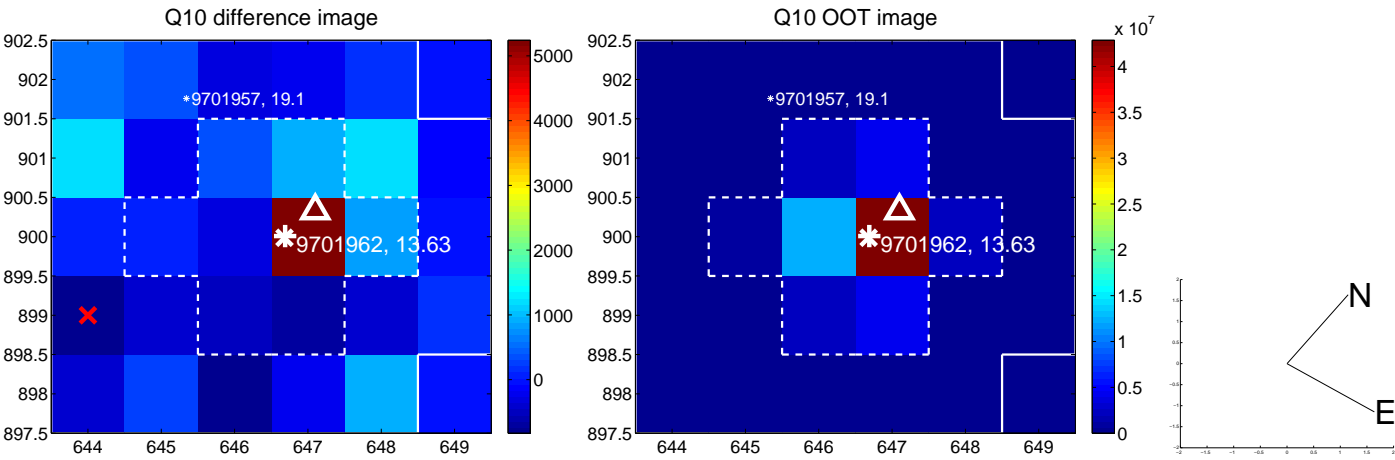
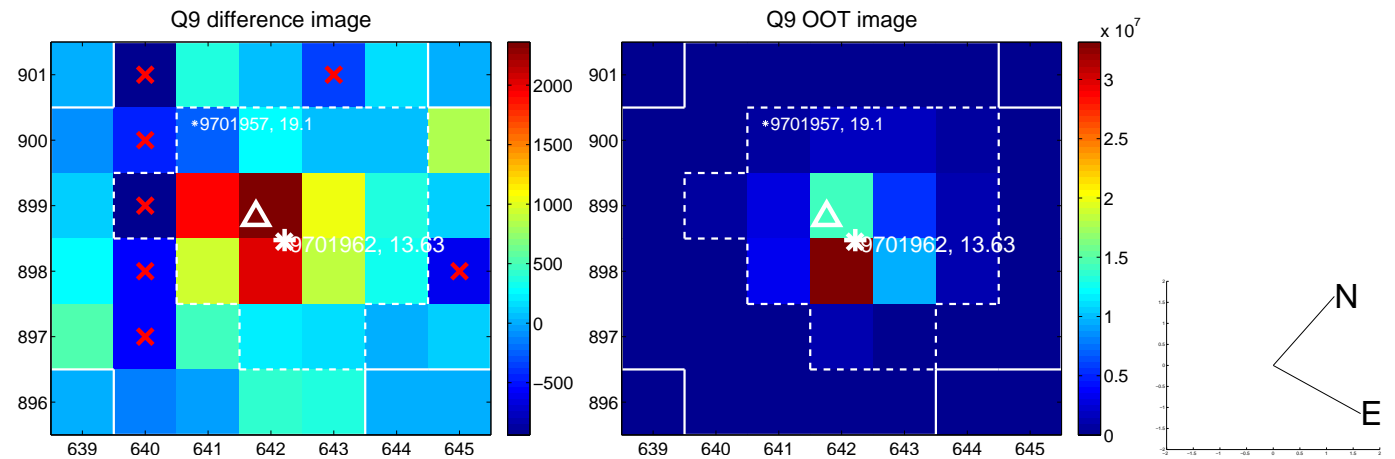
white \times : KIC target position; +: OOT centroid; \triangle : difference centroid. red \times : large negative pixel value.



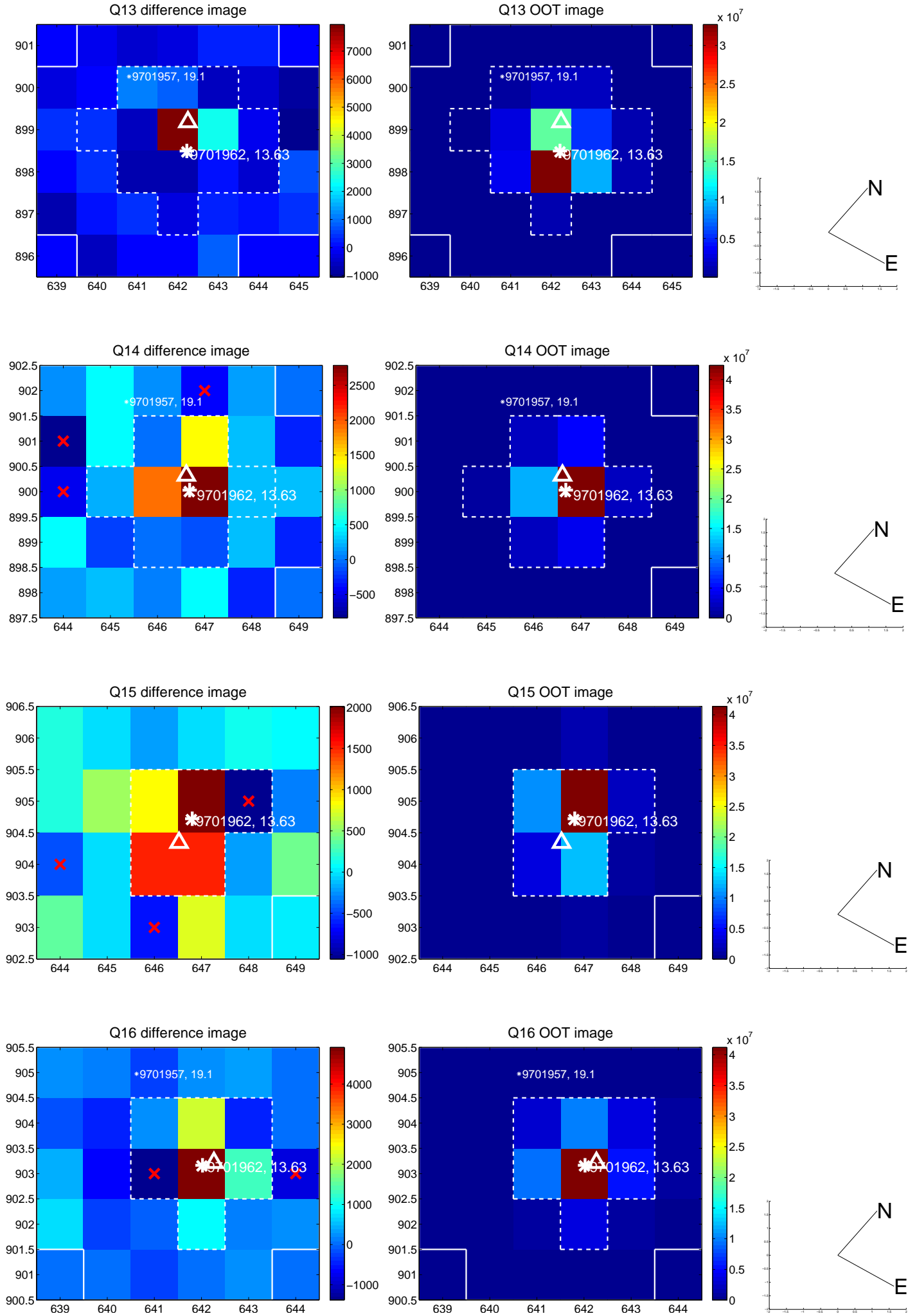
white \times : KIC target position; +: OOT centroid; \triangle : difference centroid. red \times : large negative pixel value.



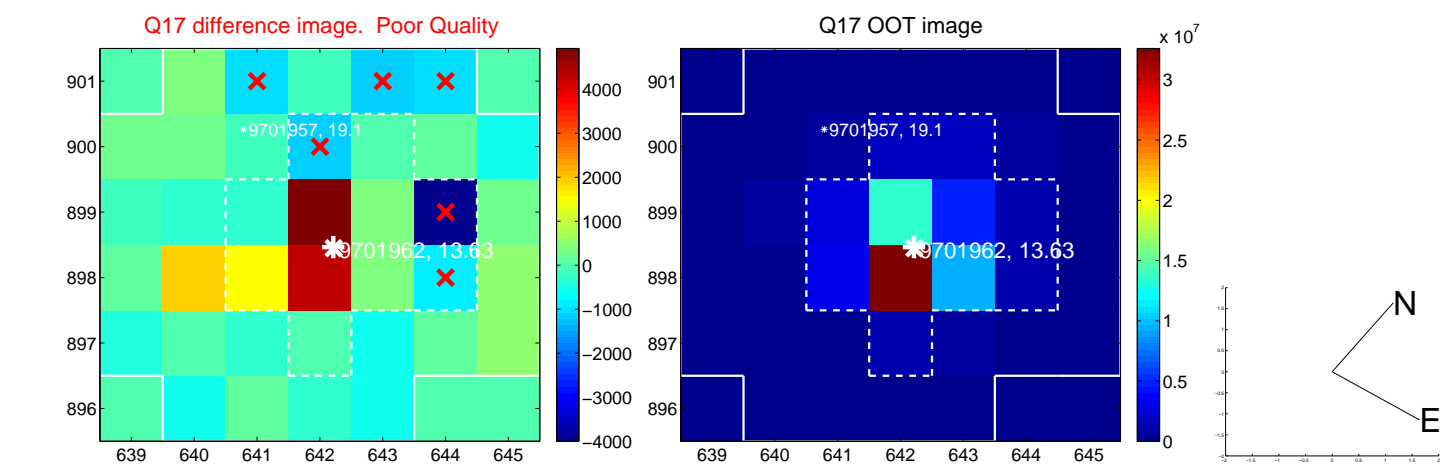
white \times : KIC target position; +: OOT centroid; \triangle : difference centroid. red \times : large negative pixel value.



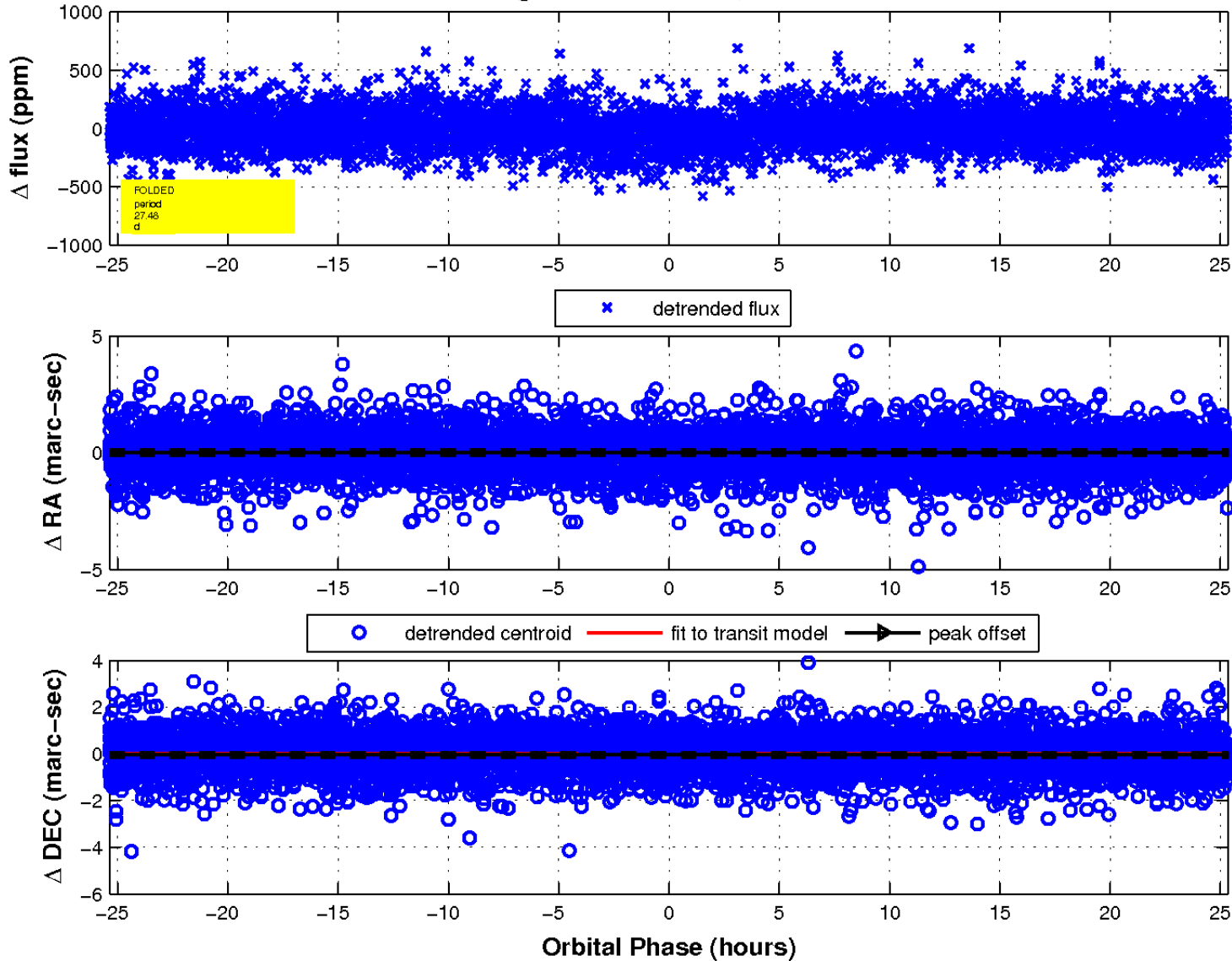
white \times : KIC target position; $+$: OOT centroid; \triangle : difference centroid. red \times : large negative pixel value.



white \times : KIC target position; $+$: OOT centroid; \triangle : difference centroid. red \times : large negative pixel value.



fluxWeightedCentroids, Planet 1 of 1



UKIRT Image

Declination

