

KIC 009520226

Q1-17 DR25 TCE Parameters

TCE	Run Type	KOI?	Period (Days)	Epoch (BKJD)	Depth (ppm)	Duration (Hours)	MES	SNR	R_{\star} (R_{\odot})	T_{\star} (K)	R_p (R_{\oplus})	S_p (S_{\oplus})
009520226-01	OBS	No	0.979691	132.350255	13.2	3.514	8.0	7.9	4.75	7505	2.01	91437.52

Robovetter Results

TCE	Run Type	Disp	Score	N	S	C	E	Comments
009520226-01	OBS	FP	0.00	1	0	0	0	LPP_DV—LPP_ALT—MOD_NONUNIQ_DV—MOD_NONUNIQ_ALT

Notes: OBS = Observed. INJ = Injected. INV = Inverted. SCR = Scrambled.

N = Not Transit-Like. S = Stellar Eclipse. C = Centroid Offset. E = Ephemeris Match.

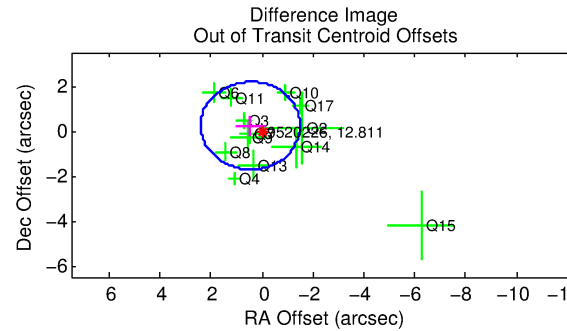
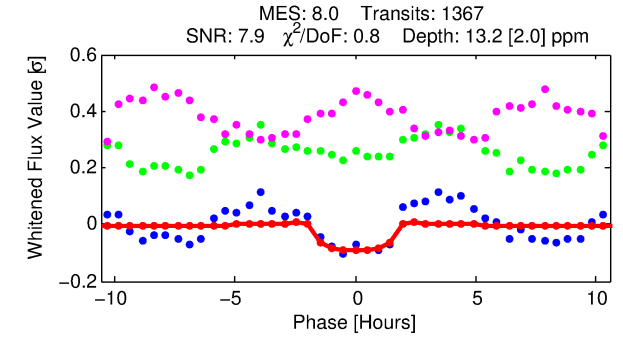
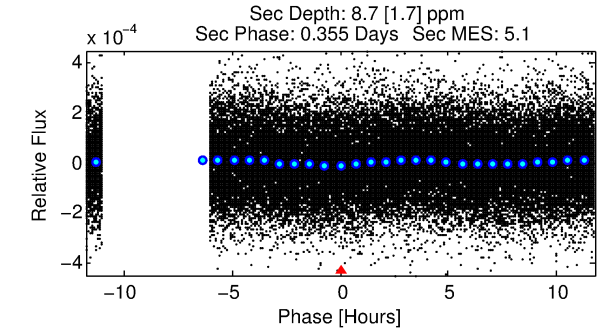
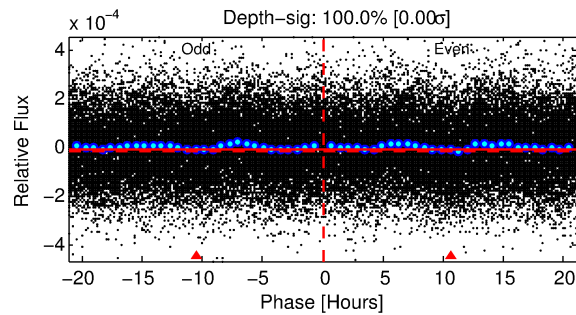
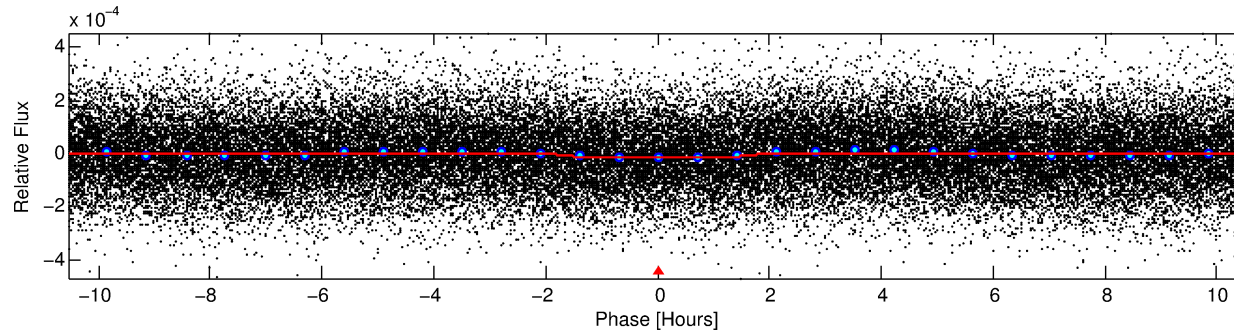
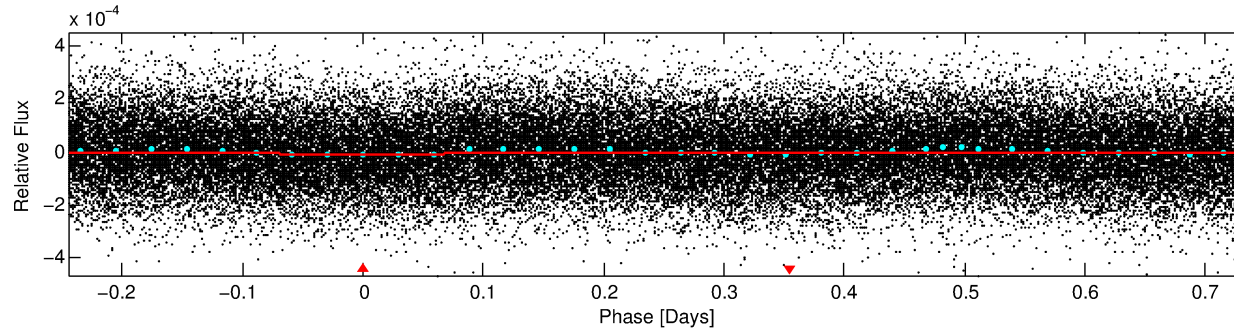
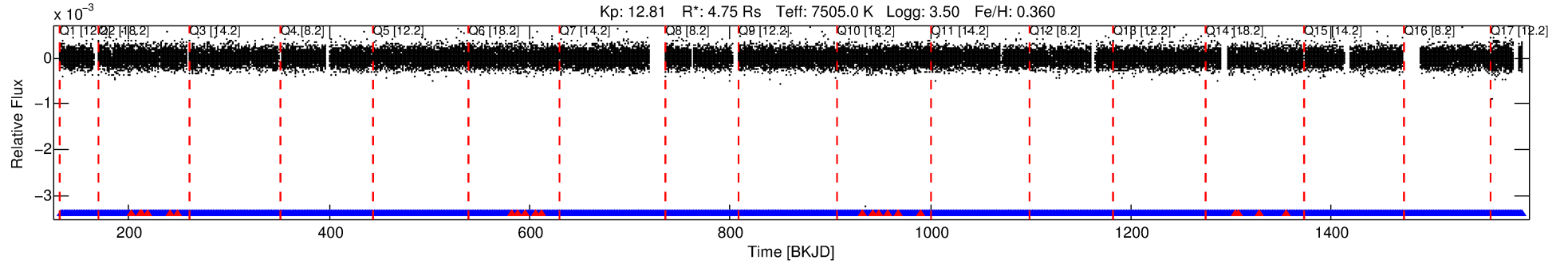
See http://exoplanetarchive.ipac.caltech.edu/docs/API_kepcandidate_columns.html#proj_disp_col for comment definitions.

Ephemeris Match Information For 009520226-01

No Significant Match Found

DV One-Page Summary

KIC: 9520226 Candidate: 1 of 1 Period: 0.980 d



DV Fit Results:

Period = 0.97969 [0.00001] d
Epoch = 132.3503 [0.0046] BKJD
Rp/R* = 0.0039 [0.0012]
a/R* = 1.33 [1.09]
b = 0.90 [0.40]
Seff = 91437.52 [85460.93]
Teq = 4434 [1036] K
Rp = 2.01 [1.32] Re
a = 0.0265 [0.0150] AU
Ag = 0.83 [0.94] [-0.18σ]
Teffp = 6550 [1111] K [1.39σ]

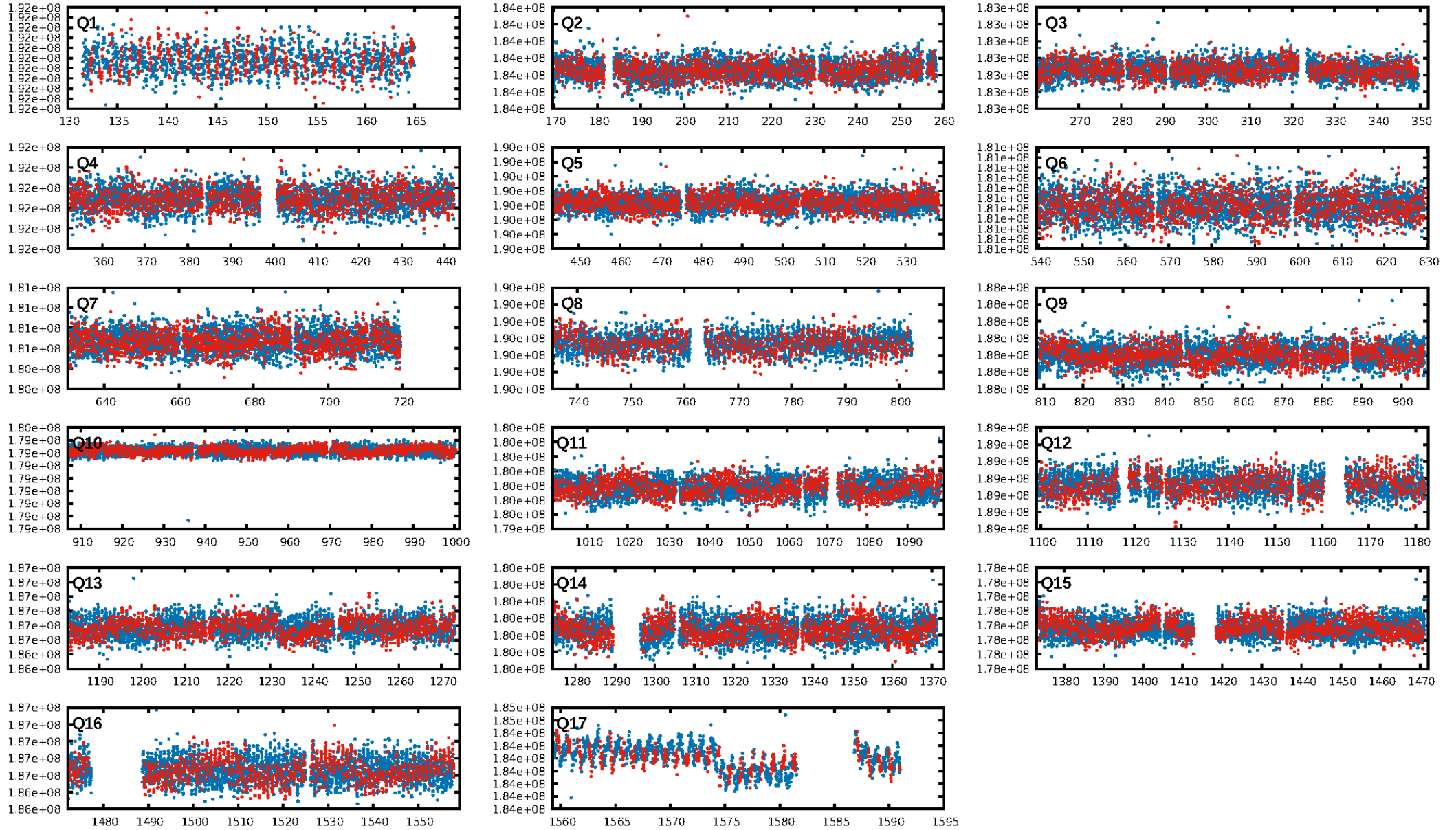
DV Diagnostic Results:

ShortPeriod-sig: N/A
LongPeriod-sig: N/A
ModelChiSquare2-sig: N/A
ModelChiSquareGof-sig: N/A
Bootstrap-pfa: 6.60e-13
RollingBand-fgt: 0.98 [1284/1306]
GhostDiagnostic-chr: 2.26
Centroid-sig: 76.5%
Centroid-so: 0.426 arcsec [0.41σ]
OotOffset-rm: 0.511 arcsec [0.79σ]
KicOffset-rm: 0.513 arcsec [0.85σ]
OotOffset-st: 4/4/2/3 [13]
KicOffset-st: 4/4/2/3 [13]
DiffImageQuality-fgm: 0.77 [10/13]
DiffImageOverlap-fno: 1.00 [17/17]

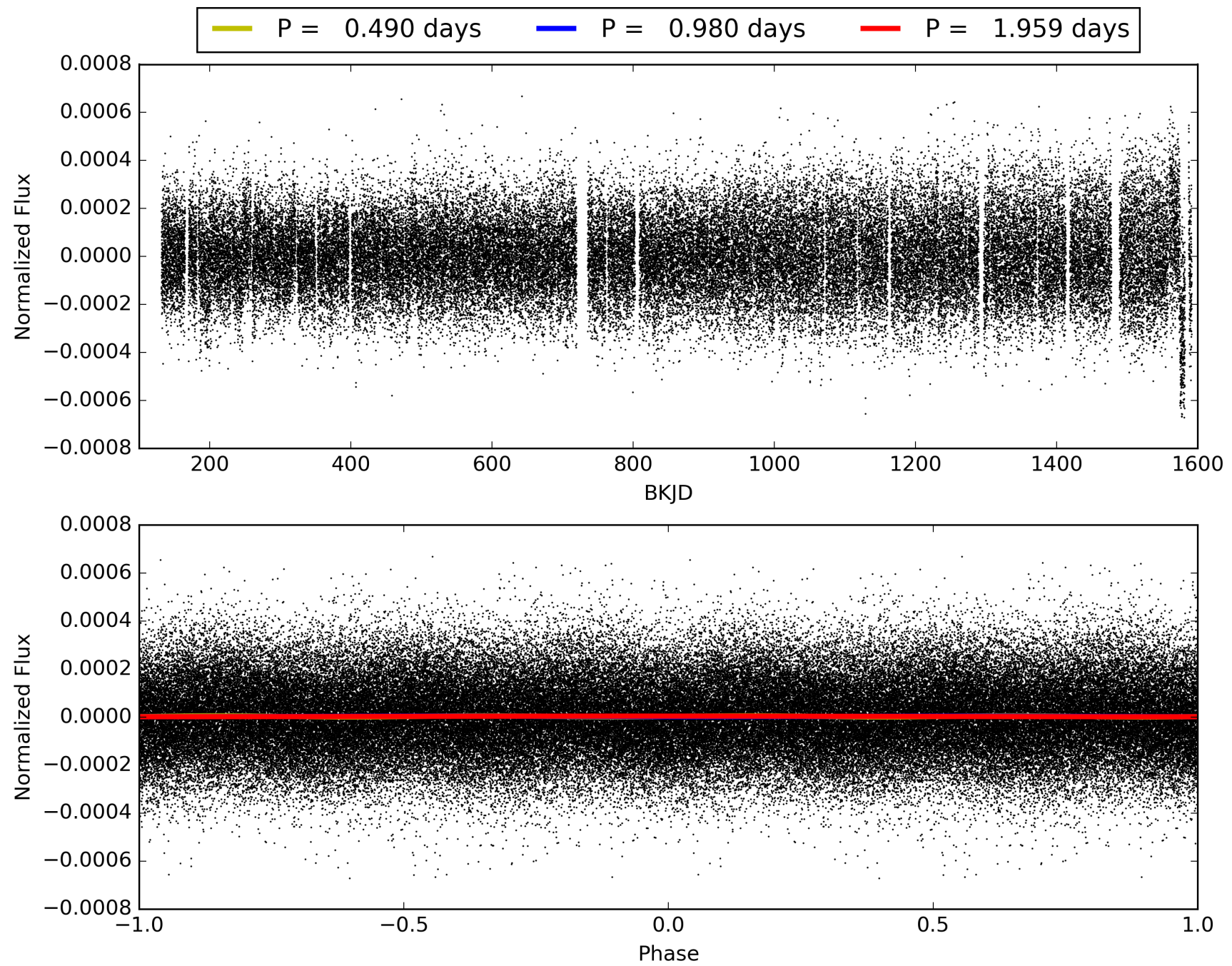
Software Revision: svn+ssh://murzim/repo/soc/tags/release/9.3.42@60958 -- Date Generated: 29-Jan-2016 01:31:13 Z

This Data Validation Report Summary was produced in the Kepler Science Operations Center Pipeline at NASA Ames Research Center

TCE 009520226-01, PDC Light Curves

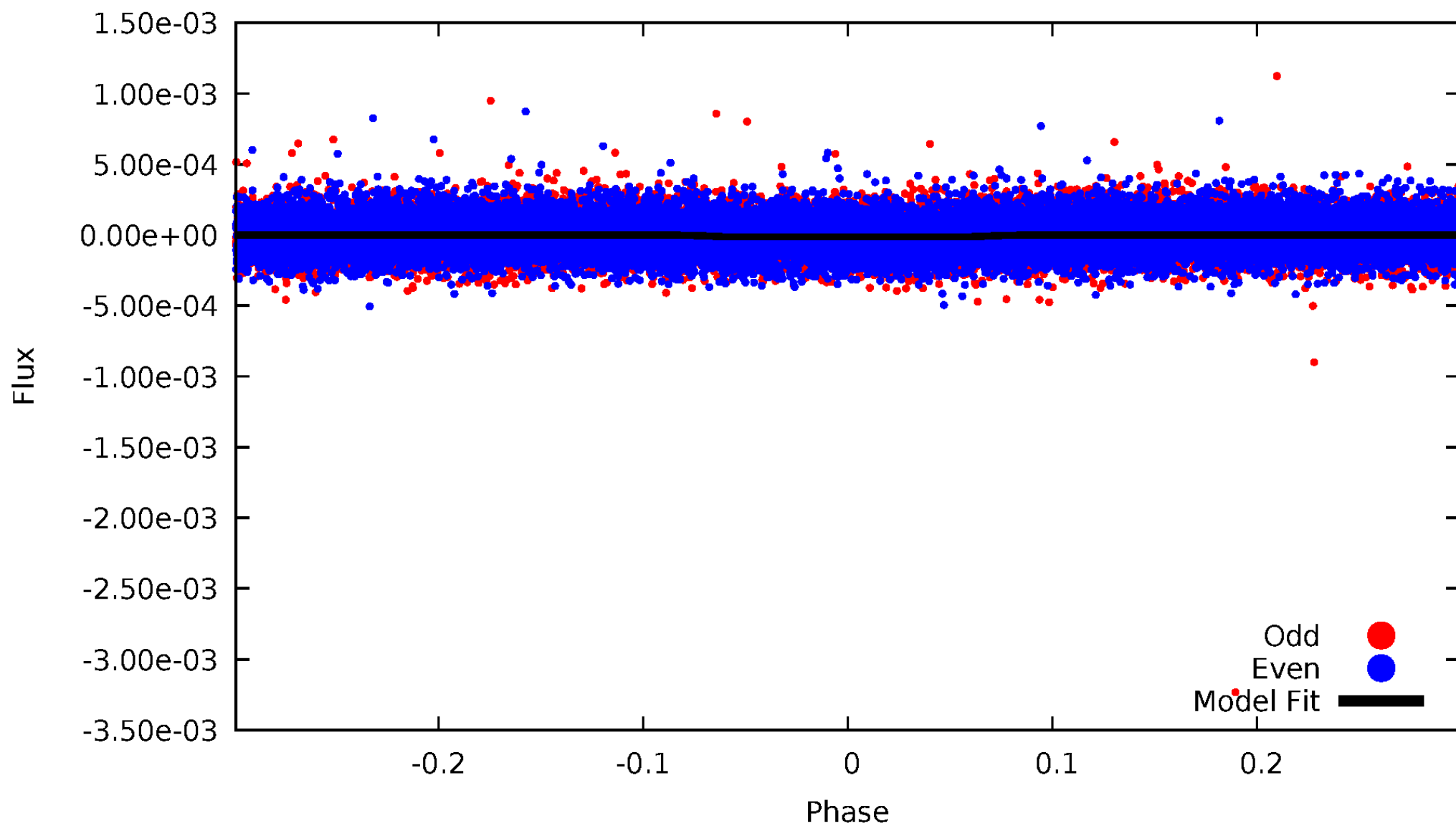


TCE 009520226-01



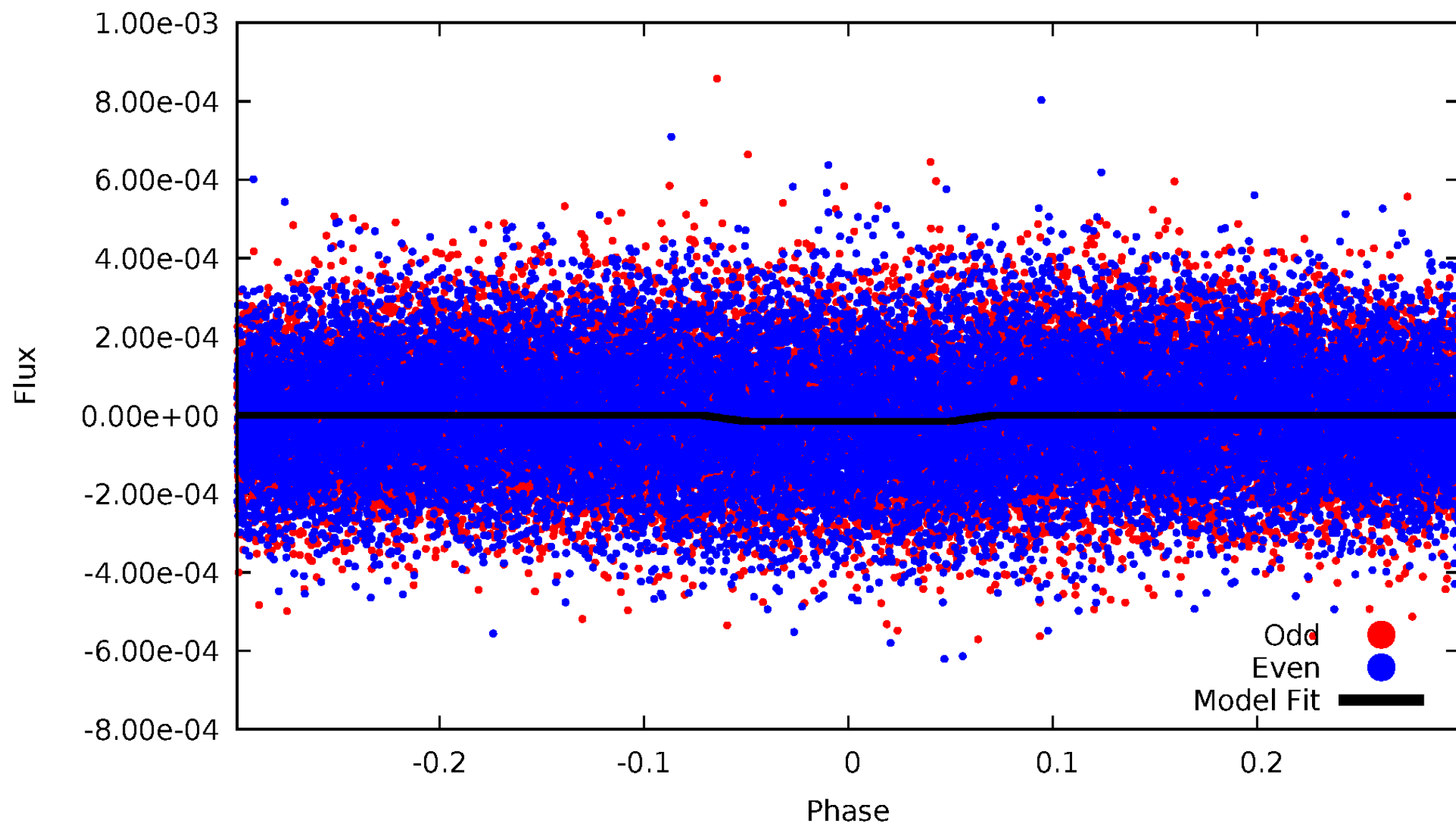
DV Odd/Even

TCE 009520226-01



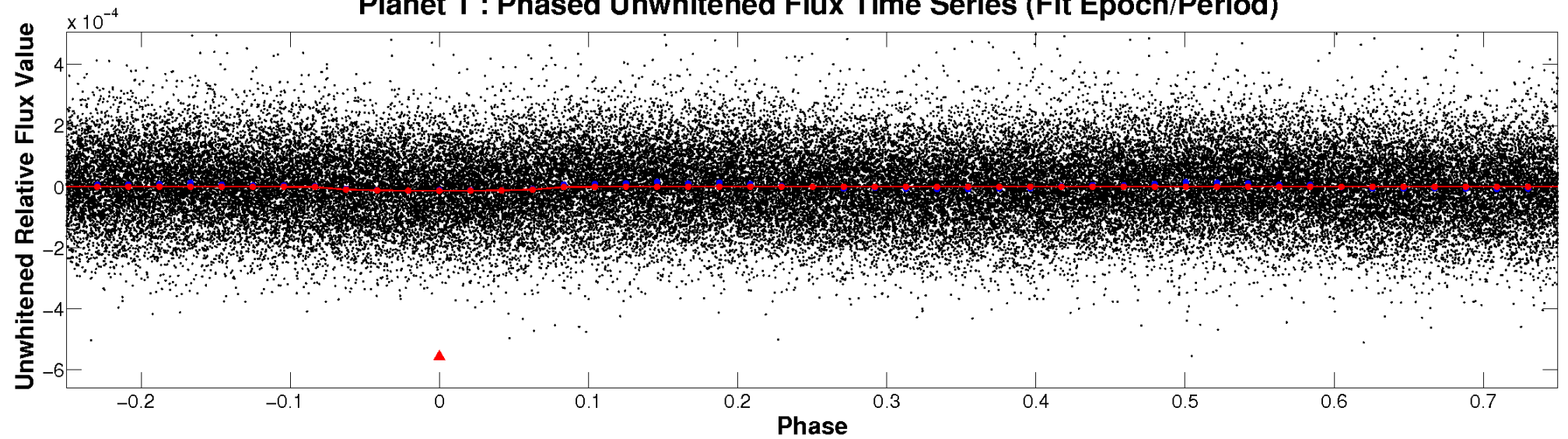
ALT Odd/Even

TCE 009520226-01

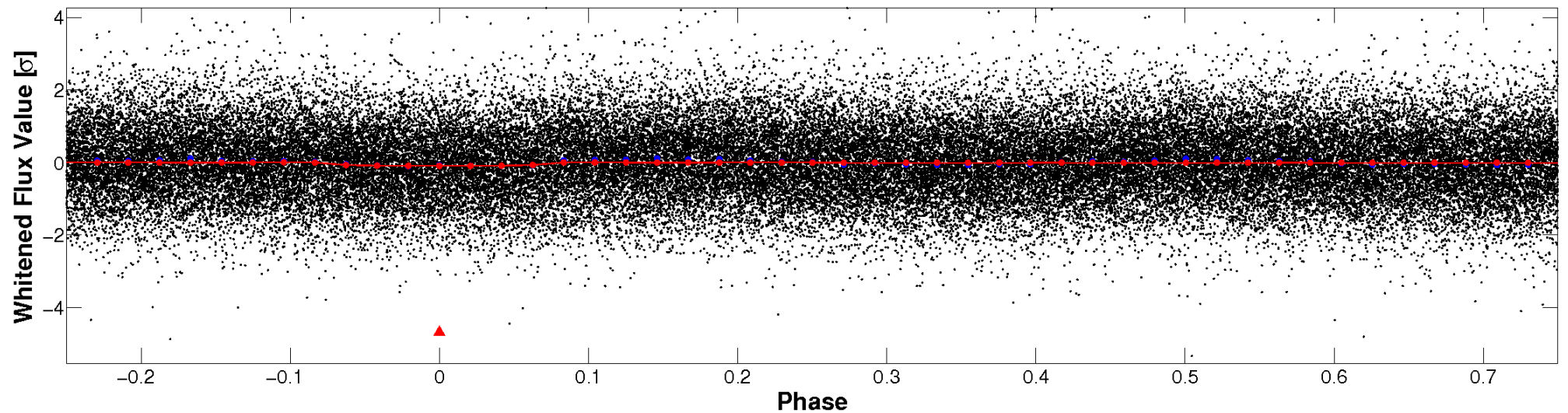


Non-Whitened Vs. Whitened Light Curve

Planet 1 : Phased Unwhitened Flux Time Series (Fit Epoch/Period)

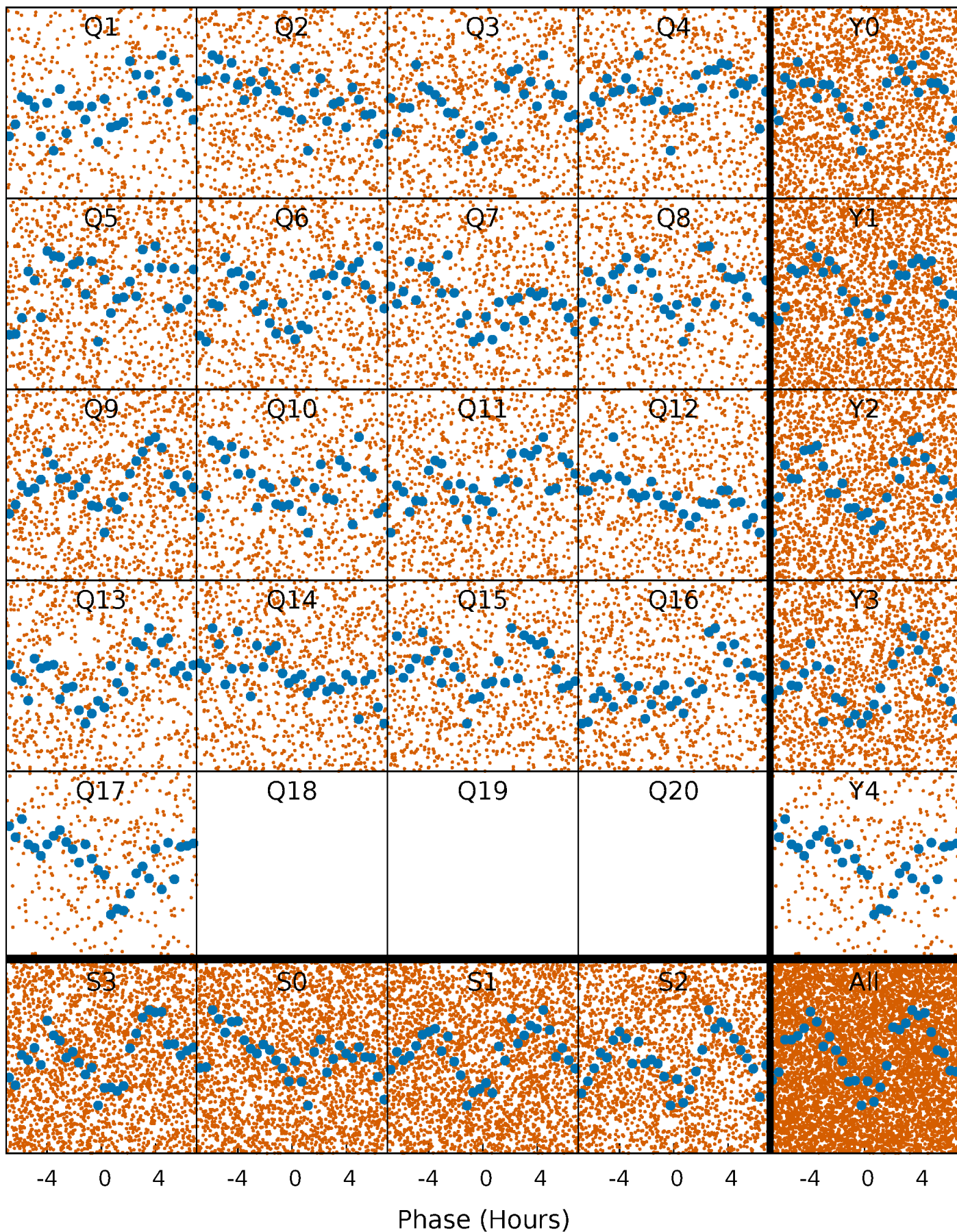


Planet 1 : Phased Whitened Flux Time Series (Fit Epoch/Period)



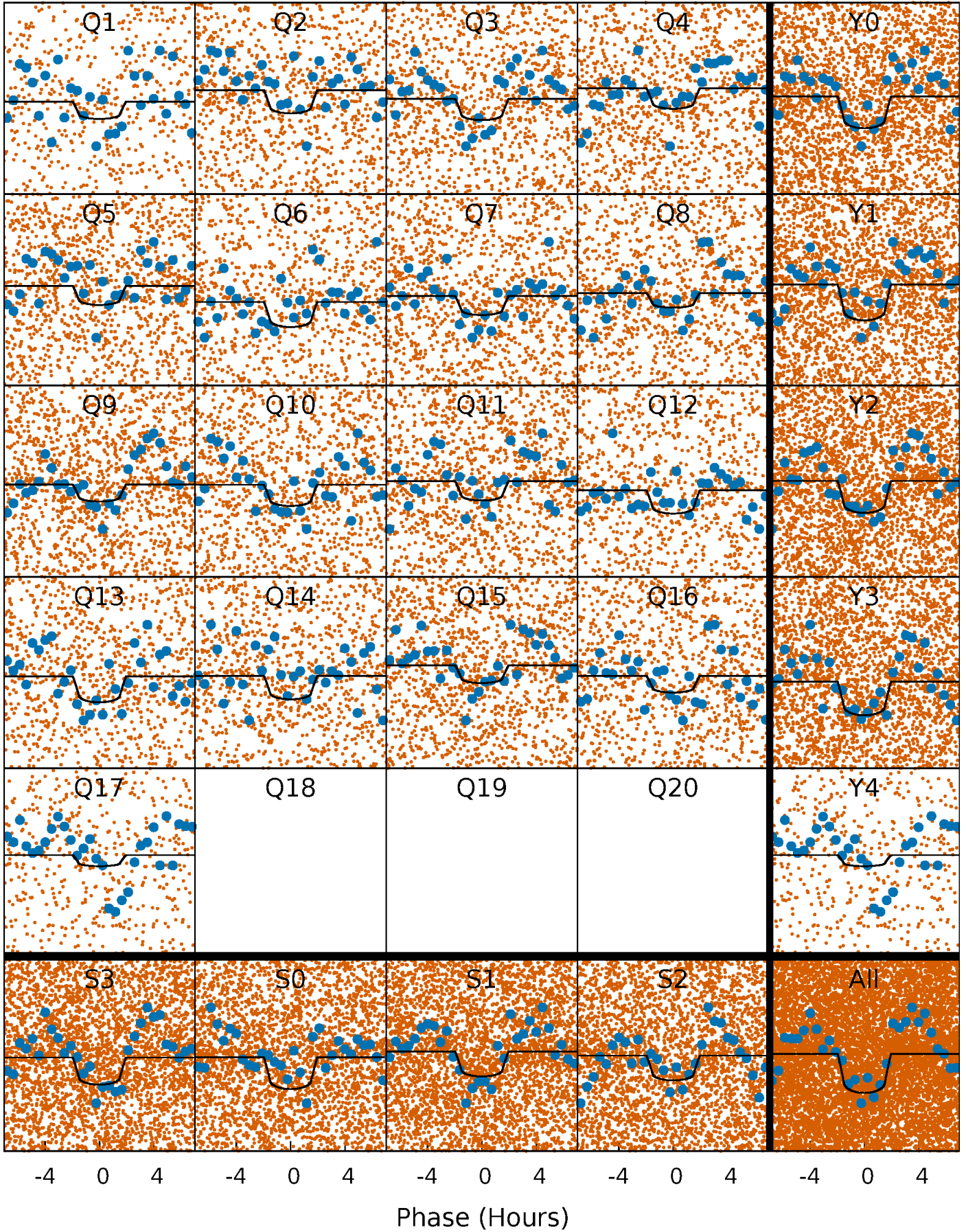
PDC Quarter-Phased Transit Curves

TCE 009520226-01 P= 0.979691 Days $T_0=132.350255$ (BKJD)



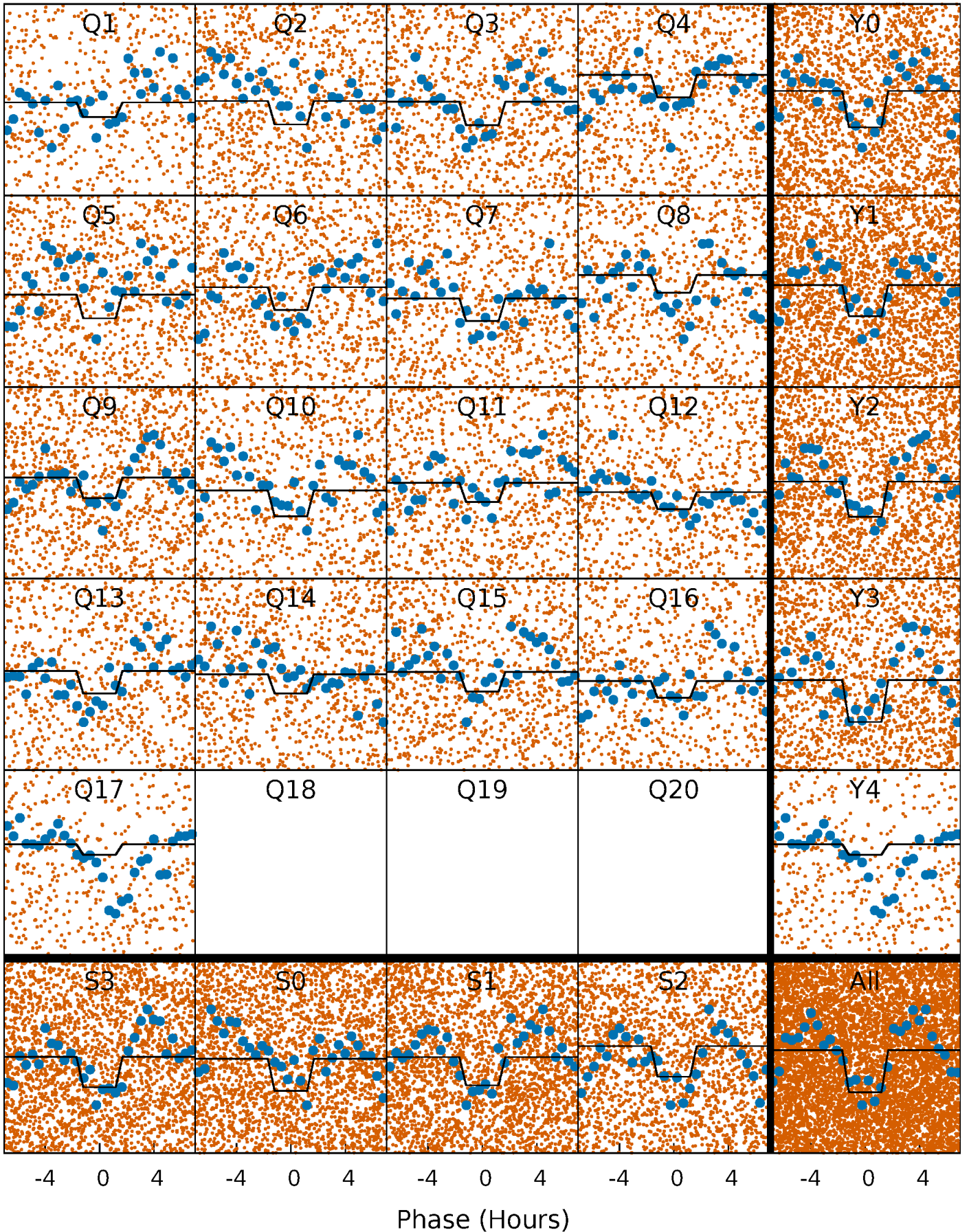
DV Quarter-Phased Transit Curves

TCE 009520226-01 P= 0.979691 Days $T_0=132.350255$ (BKJD)



Alt. Detrend Quarter-Phased Transit Curves

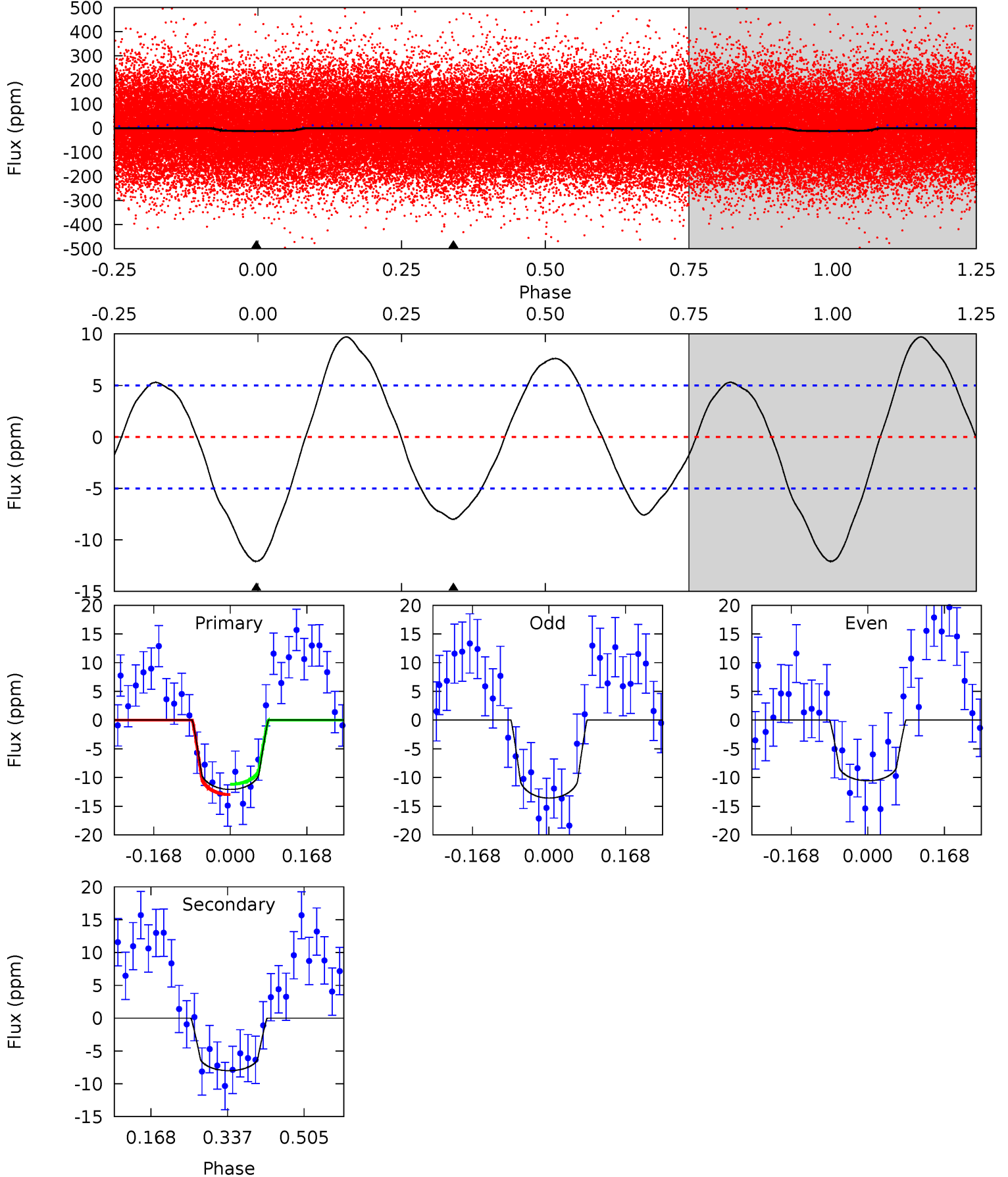
TCE 009520226-01 P= 0.979691 Days $T_0=132.350255$ (BKJD)



DV Model-Shift Uniqueness Test

009520226-01, P = 0.979691 Days, E = 131.370564 Days

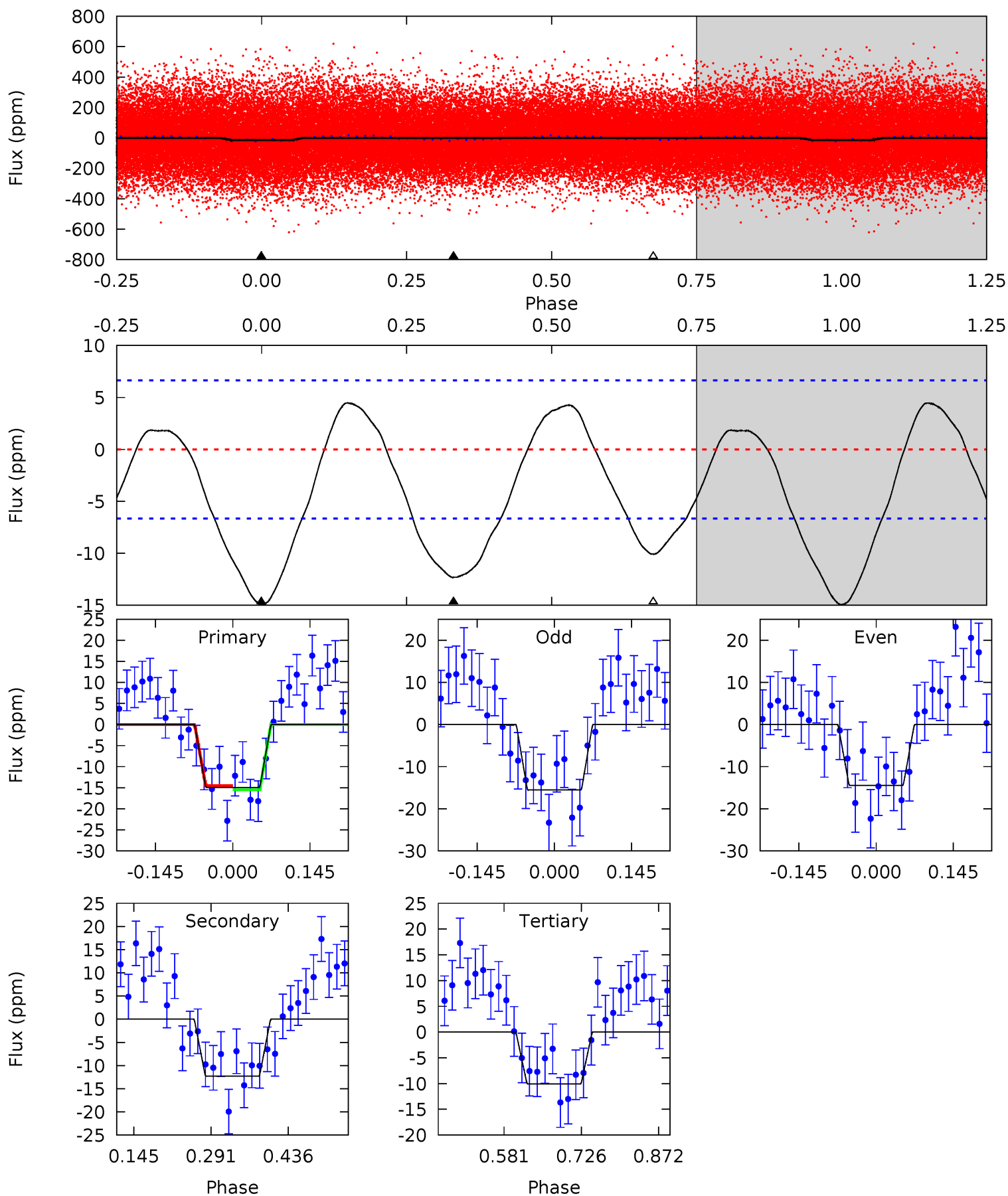
Pri	Sec	Ter	Pos	FA ₁	FA ₂	F _{Red}	Pri-Ter	Pri-Pos	Sec-Ter	Sec-Pos	Odd-Evn	DMM	Shape	TAT
10.8	7.14	0	0	4.45	1.38	4.51	10.8	10.8	7.14	7.14	1.34	0.97	0.45	0.79



Alt Model-Shift Uniqueness Test

009520226-01, P = 0.979691 Days, E = 131.370564 Days

Pri	Sec	Ter	Pos	FA ₁	FA ₂	F _{Red}	Pri-Ter	Pri-Pos	Sec-Ter	Sec-Pos	Odd-Evn	DMM	Shape	TAT
10.1	8.31	6.81	0	4.49	1.46	3.34	3.26	10.1	1.50	8.31	0.36	0.72	0.23	0.34



Stellar Parameters For KIC 009520226

	$T_{\text{eff}}(K)$	$\log(g)$	[Fe/H]	R (R_{\odot})	$M(M_{\odot})$	p_{\star} ($\text{g}\cdot\text{cm}^{-3}$)
	7505^{+207}_{-355}	$3.496^{+0.541}_{-0.057}$	$0.360^{+0.050}_{-0.400}$	$4.747^{+0.288}_{-2.740}$	$2.576^{+0.097}_{-0.876}$	$0.034^{+0.228}_{-0.012}$
	+3%/-5%	+15%/-2%	+14%/-111%	+6%/-58%	+4%/-34%	+671%/-34%
Source	KIC0	KIC0	KIC0	DSEP		

KIC = Kepler Input Catalog; PHO = Photometry; SPE = Spectroscopy; AST = Asteroseismology
 TRA = Transits; DESP = Dartmouth Models; MULT = Multiple Models

Secondary Eclipse Parameters for KIC 009520226-01 / KOI

Detrend	Depth (ppm)	R_p (R_{\oplus})	T_{max} (K)	T_{obs} (K)	A_{obs}
DV	-8 ± 1	$1.80^{+0.74}_{-0.66}$	5958^{+420}_{-782}	5582^{+1669}_{-1188}	$0.905^{+1.383}_{-0.442}$
Alt.	-12 ± 1	$1.79^{+0.76}_{-0.75}$	5985^{+379}_{-786}	6625^{+2153}_{-1237}	$1.478^{+2.726}_{-0.742}$

T_{max} = Theoretical Maximum Planetary Temperature

T_{obs} = Observed Planetary Temperature (Assuming $A=0.3$)

A_{obs} = Observed Albedo (Assuming $T=0$)

If a secondary eclipse is present, the system is likely an EB if $T_{\text{obs}} \gg T_{\text{max}}$ AND $A_{\text{obs}} \gg 1.0$

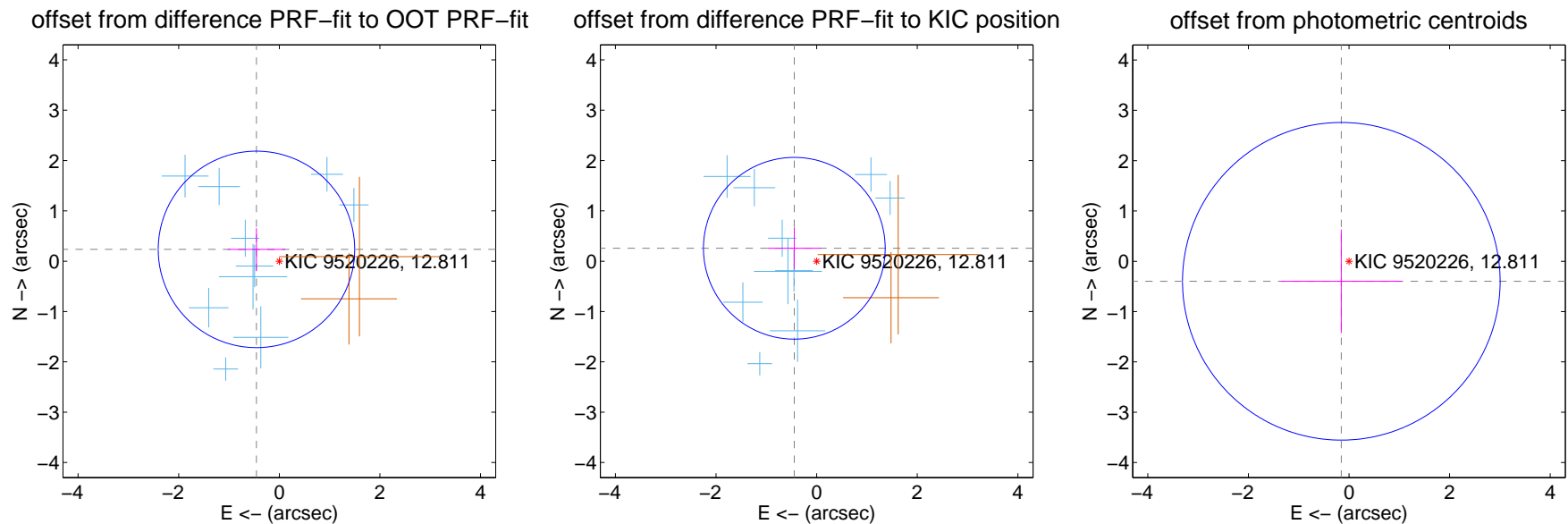
DV Centroid Data

Supplemental centroid analysis for 009520226-01. Kepler magnitude: 12.81. Transit SNR 7.93

There are 10 quarters with good PRF difference image offsets

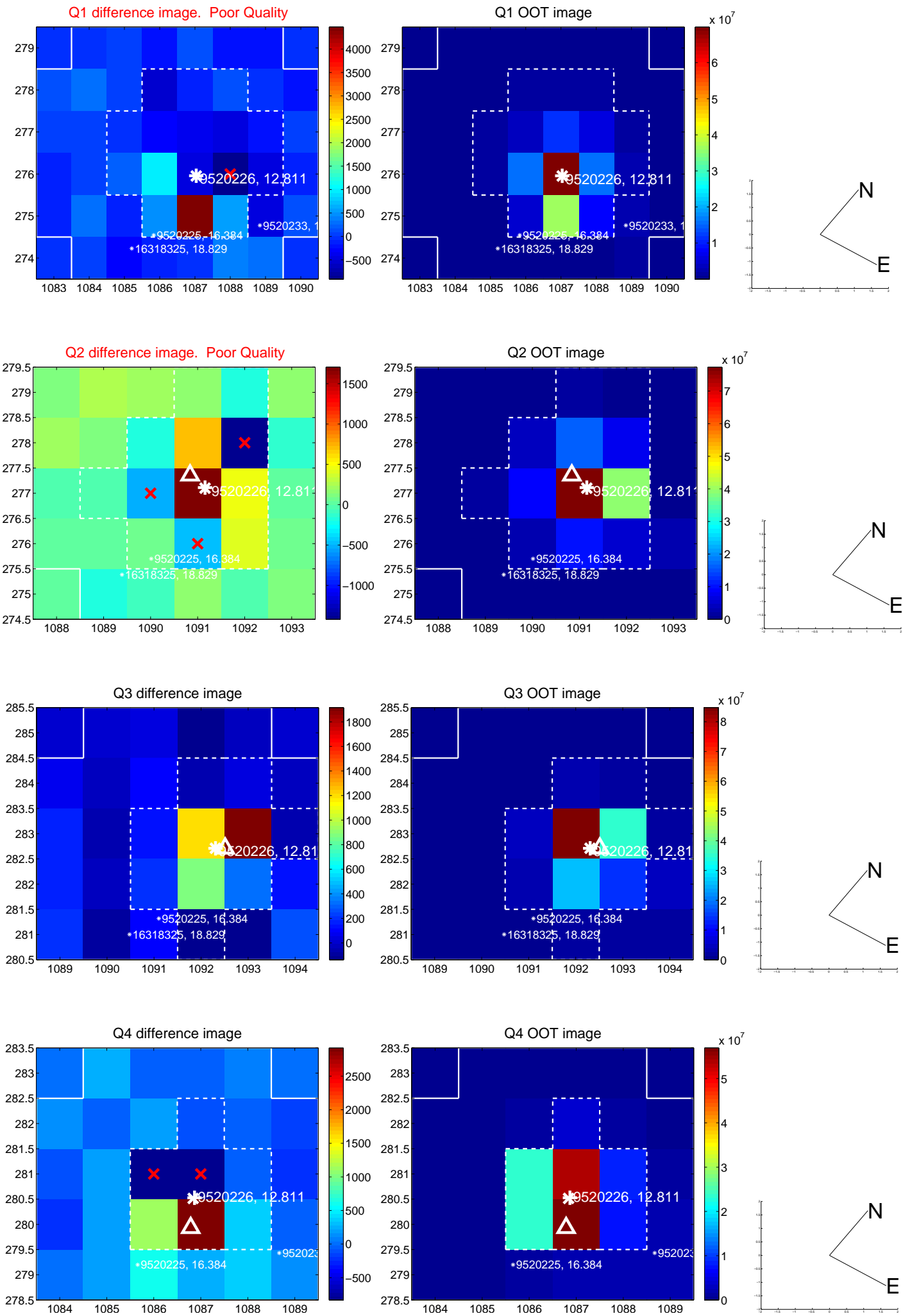
The direct PRF centroid is offset from the target star catalog position by about 0.14 arcsec

	Distance in arcsec	Distance / σ	Δ RA	Δ Dec
PRF-fit source offset from OOT	0.511 ± 0.651	0.79	0.454 ± 0.573	0.234 ± 0.421
PRF-fit source offset from KIC position	0.513 ± 0.602	0.85	0.444 ± 0.531	0.257 ± 0.413
photometric centroid source offset	0.43 ± 1.05	0.41	0.15 ± 1.20	-0.40 ± 1.03

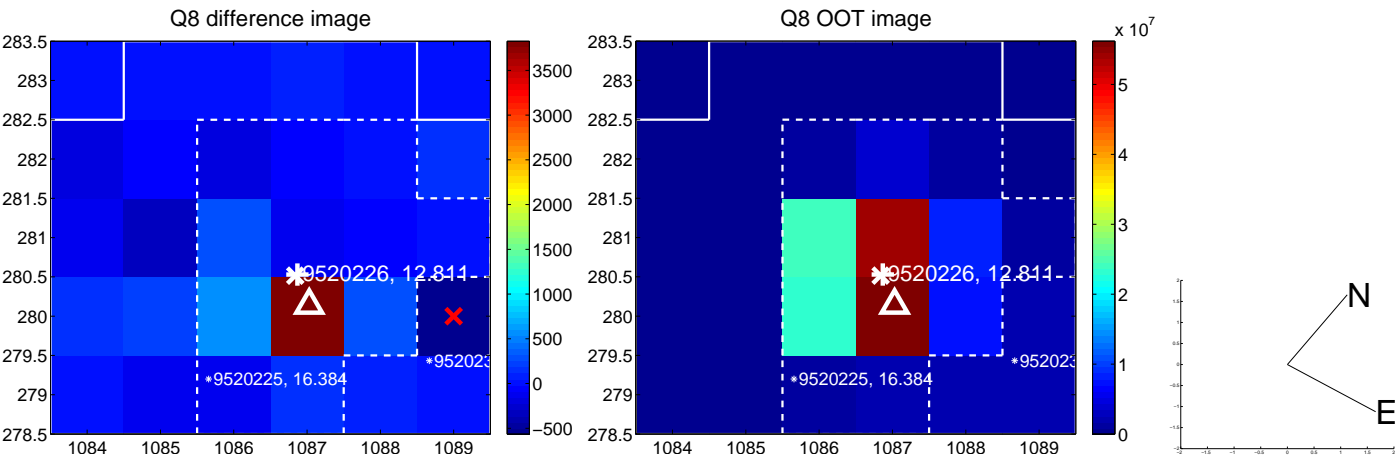
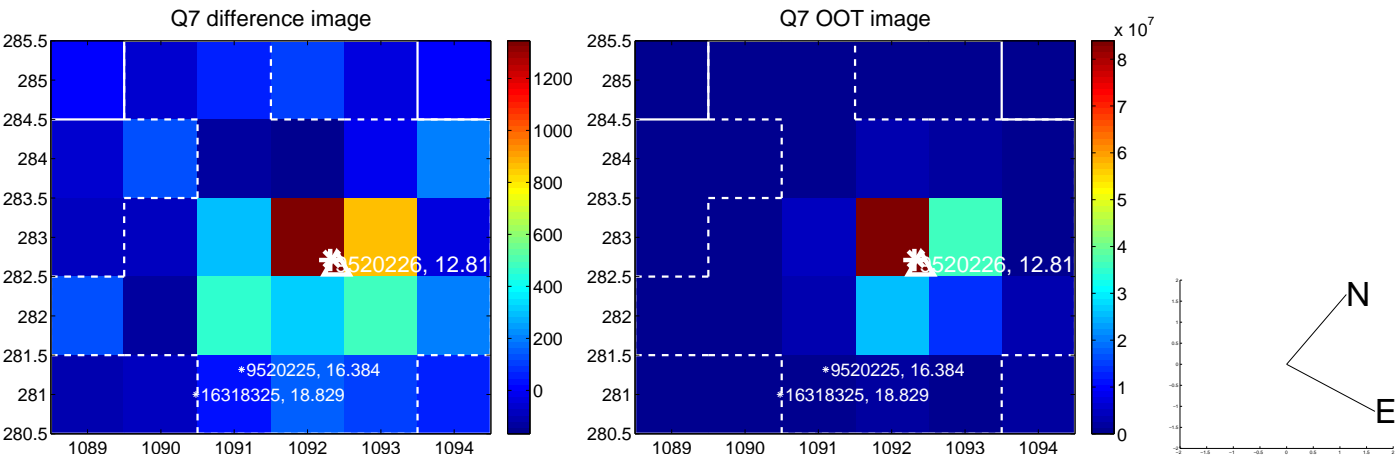
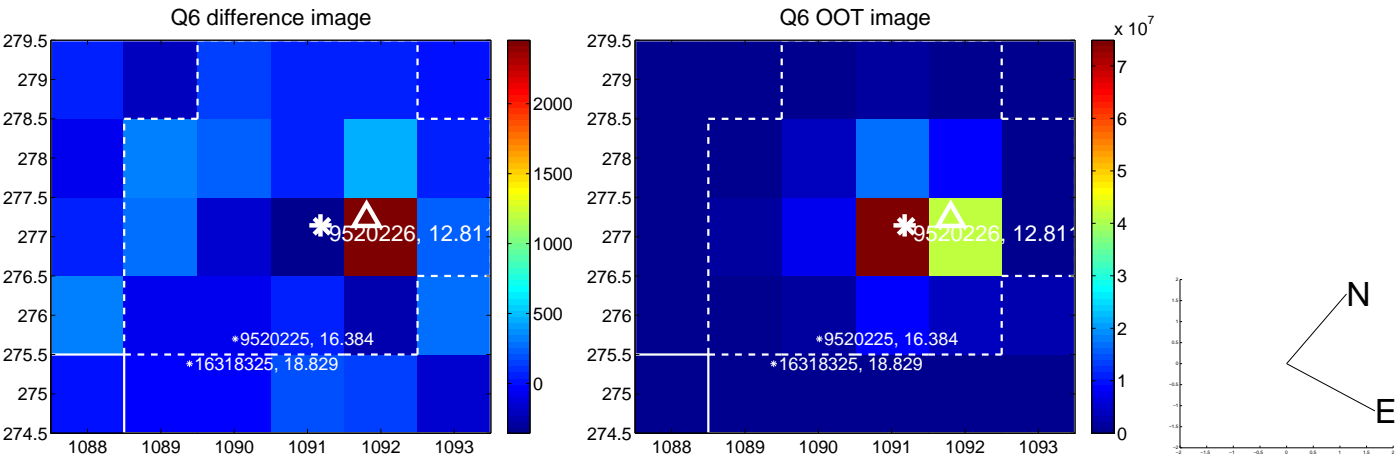
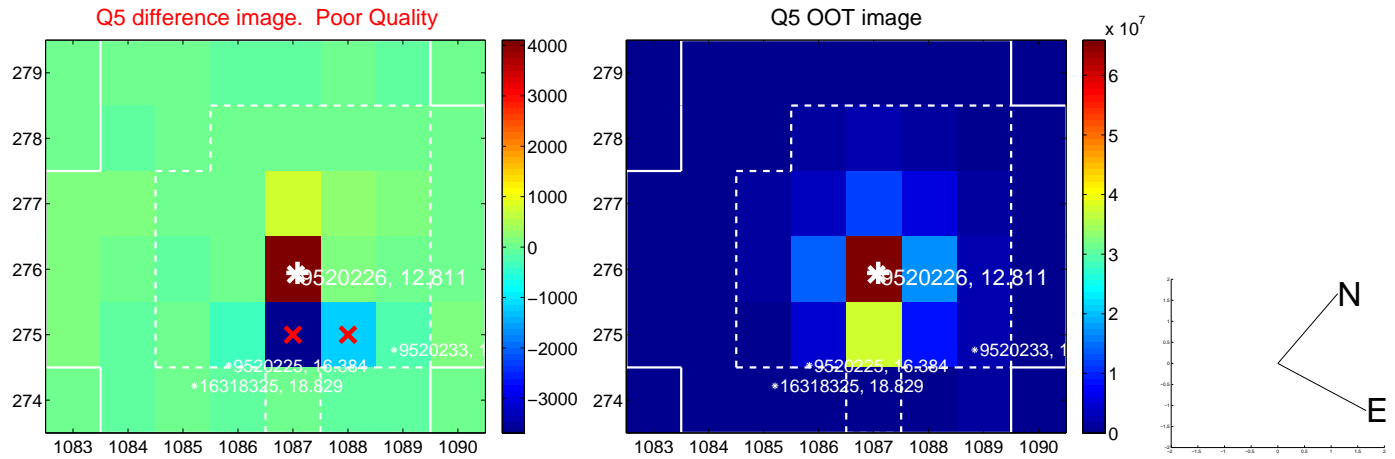


Centroid source offsets from the target star reconstructed from PRF and photometric centroids. **Sky blue crosses: good quarterly centroid offsets; Vermillion crosses: bad quarterly centroid offsets**; magenta cross: average over quarters. Length of the crosses: one- σ uncertainty. Blue circle: three- σ . Red *: target star. Blue *: Other stars. Text next to a star gives its KIC ID and kepmag. KIC IDs > 15,000,000 are from the UKIRT catalog.

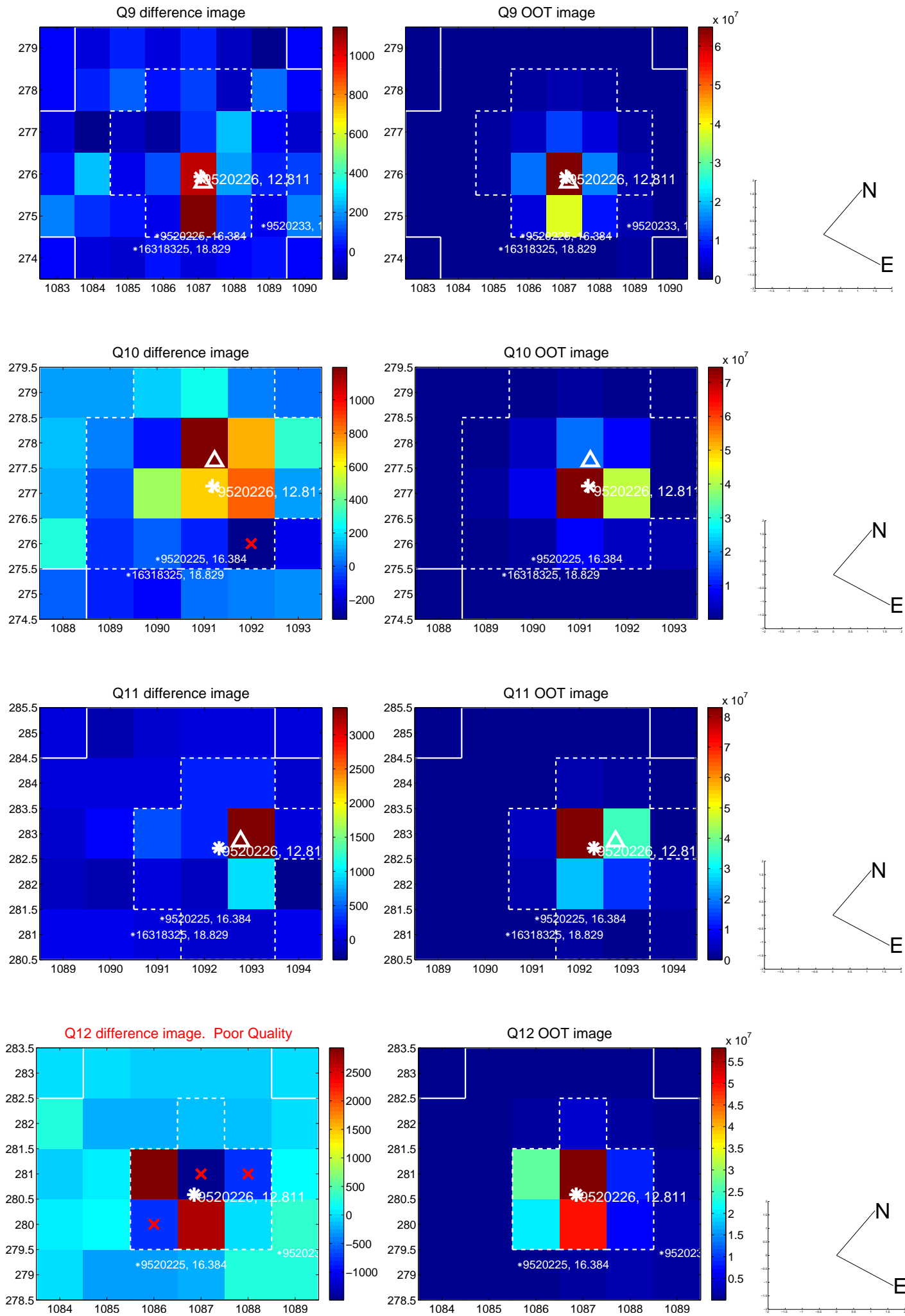
white \times : KIC target position; +: OOT centroid; \triangle : difference centroid. red \times : large negative pixel value.



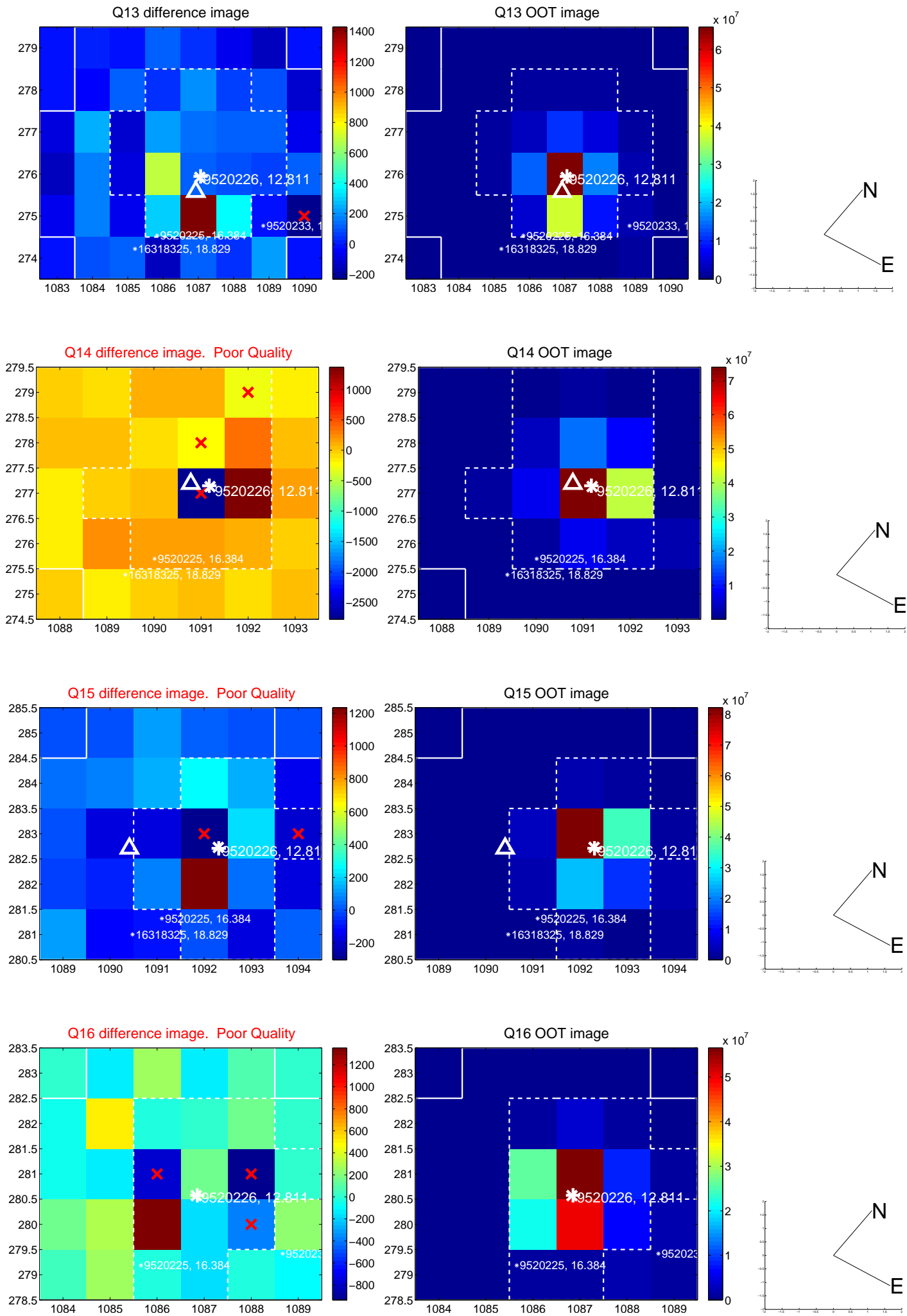
white \times : KIC target position; +: OOT centroid; \triangle : difference centroid. red \times : large negative pixel value.



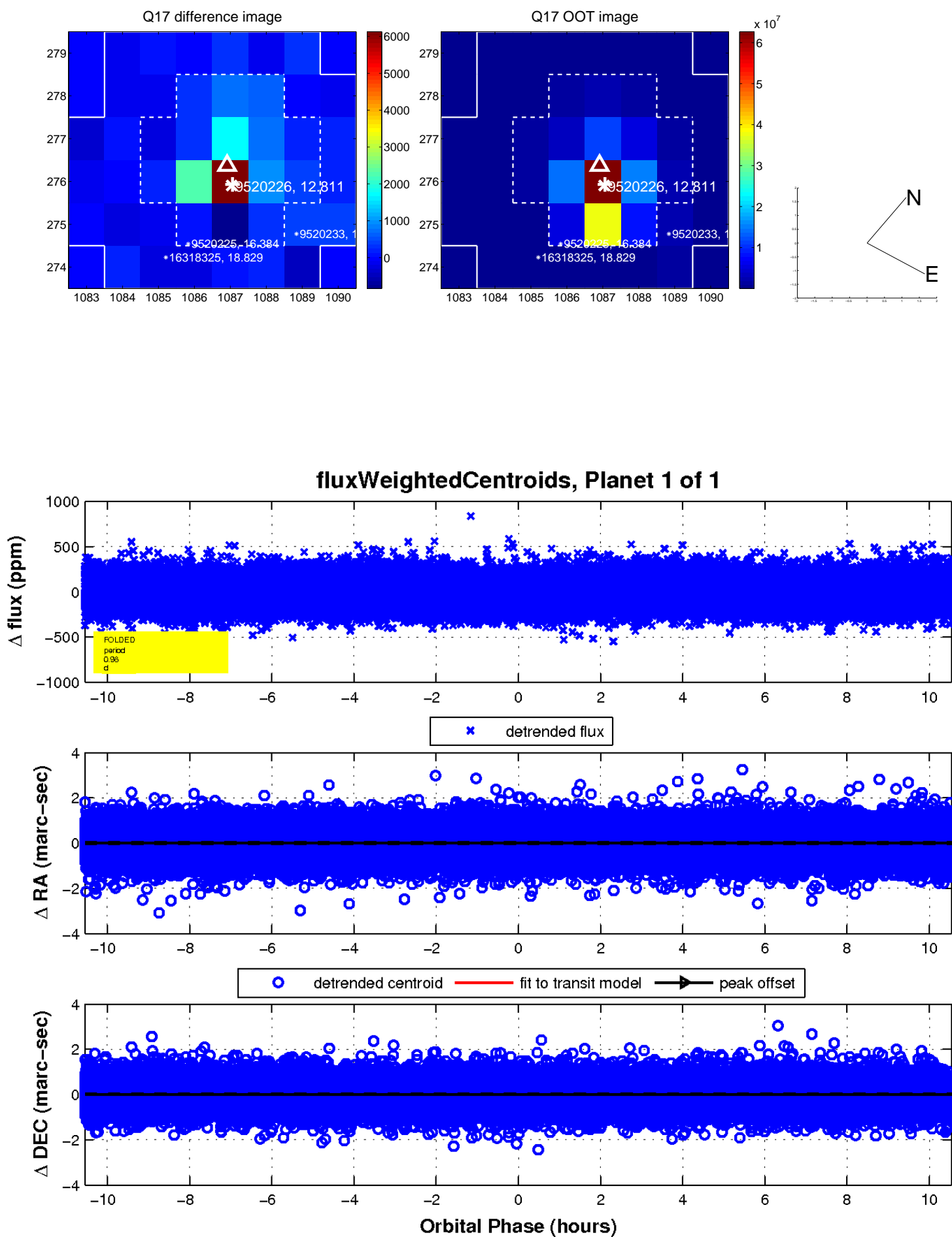
white \times : KIC target position; +: OOT centroid; \triangle : difference centroid. red \times : large negative pixel value.



white \times : KIC target position; +: OOT centroid; \triangle : difference centroid. red \times : large negative pixel value.



white \times : KIC target position; $+$: OOT centroid; \triangle : difference centroid. red \times : large negative pixel value.



UKIRT Image

Declination

