

KIC 008959062

Q1-17 DR25 TCE Parameters

TCE	Run Type	KOI?	Period (Days)	Epoch (BKJD)	Depth (ppm)	Duration (Hours)	MES	SNR	R_{\star} (R_{\odot})	T_{\star} (K)	R_p (R_{\oplus})	S_p (S_{\oplus})
008959062-01	OBS	No	3.360410	133.950389	0.0	28.674	12.0	0.0	3.33	8111	0.03	13631.07

Robovetter Results

TCE	Run Type	Disp	Score	N	S	C	E	Comments
008959062-01	OBS	FP	0.00	1	0	0	0	SWEET_NTL — LPP_DV — MOD_NONUNIQ_DV — CENT_SATURATED

Notes: OBS = Observed. INJ = Injected. INV = Inverted. SCR = Scrambled.

N = Not Transit-Like. S = Stellar Eclipse. C = Centroid Offset. E = Ephemeris Match.

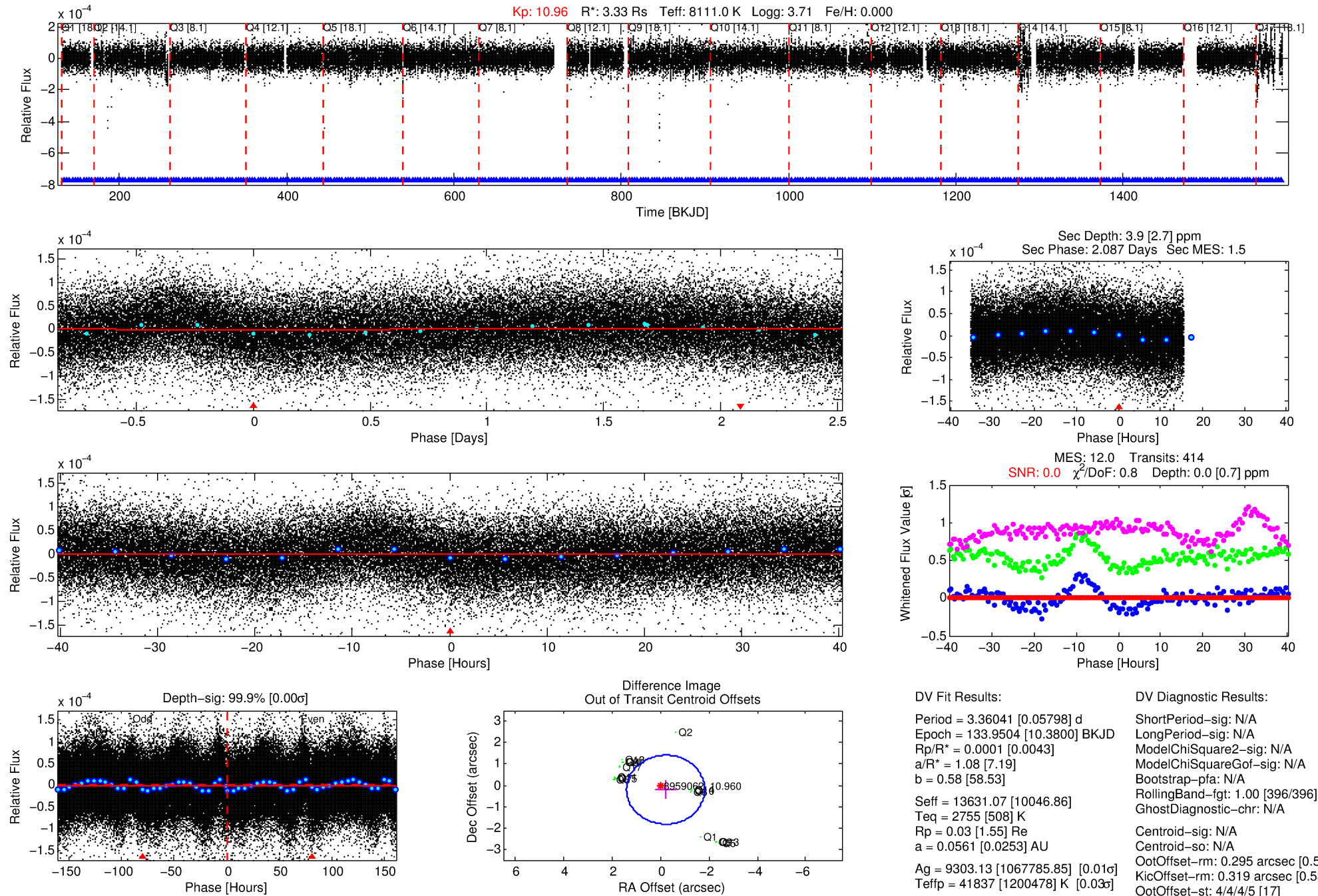
See http://exoplanetarchive.ipac.caltech.edu/docs/API_kepcandidate_columns.html#proj_disp_col for comment definitions.

Ephemeris Match Information For 008959062-01

No Significant Match Found

DV One-Page Summary

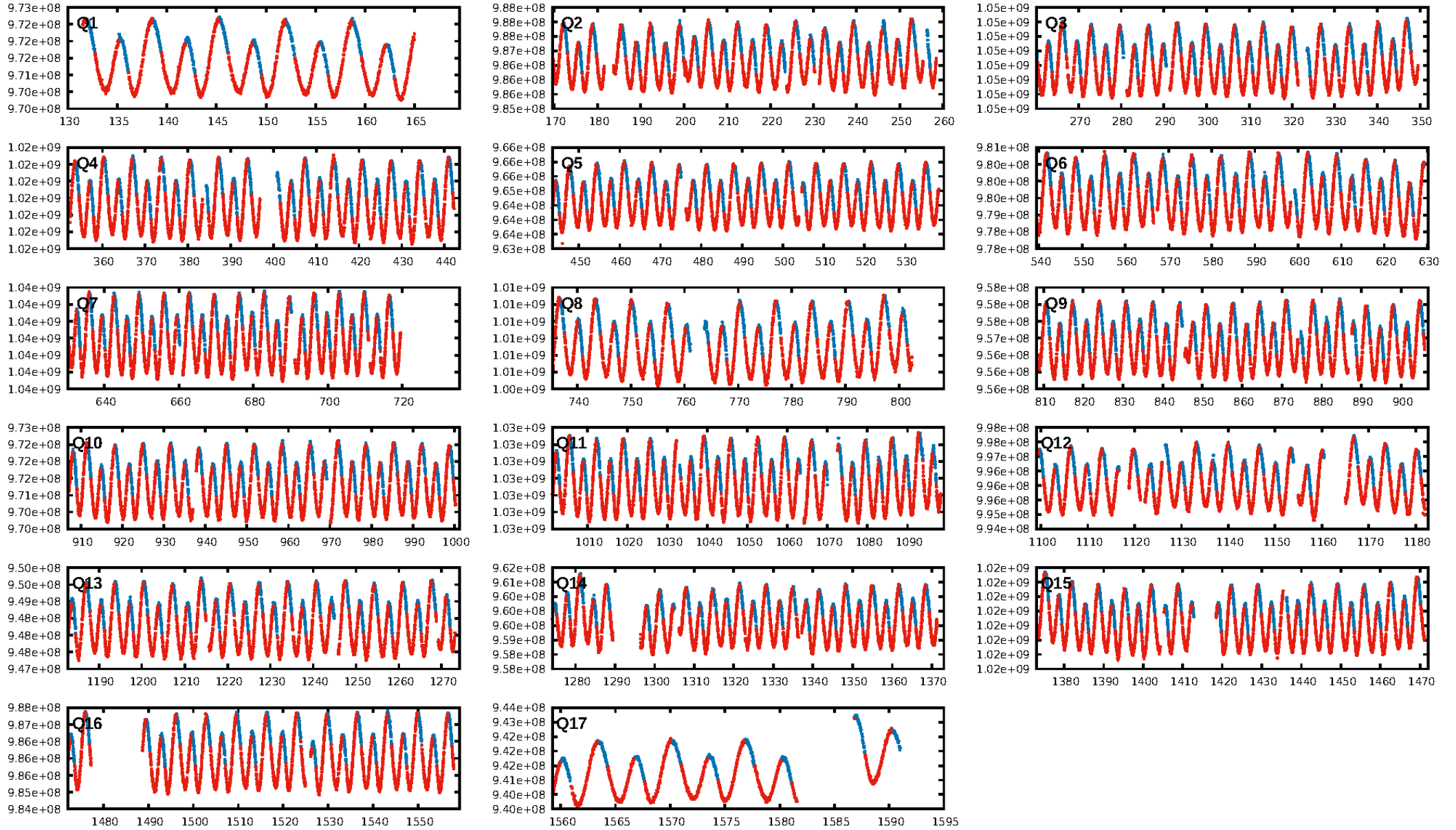
KIC: 8959062 Candidate: 1 of 1 Period: 3.360 d



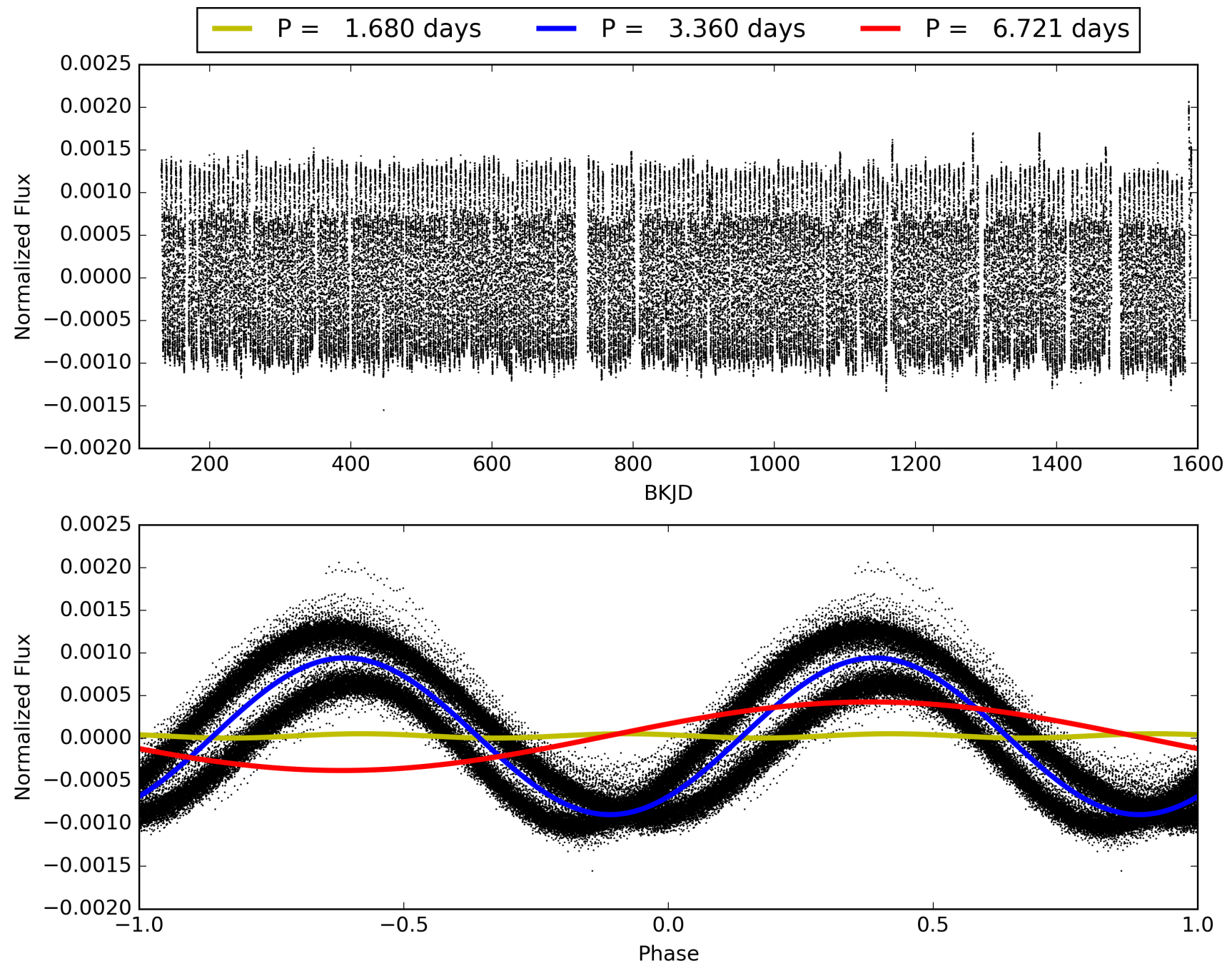
Software Revision: svn+ssh://murzim/repo/soc/tags/release/9.3.42@60958 -- Date Generated: 31-Jan-2016 13:23:15 Z

This Data Validation Report Summary was produced in the Kepler Science Operations Center Pipeline at NASA Ames Research Center

TCE 008959062-01, PDC Light Curves

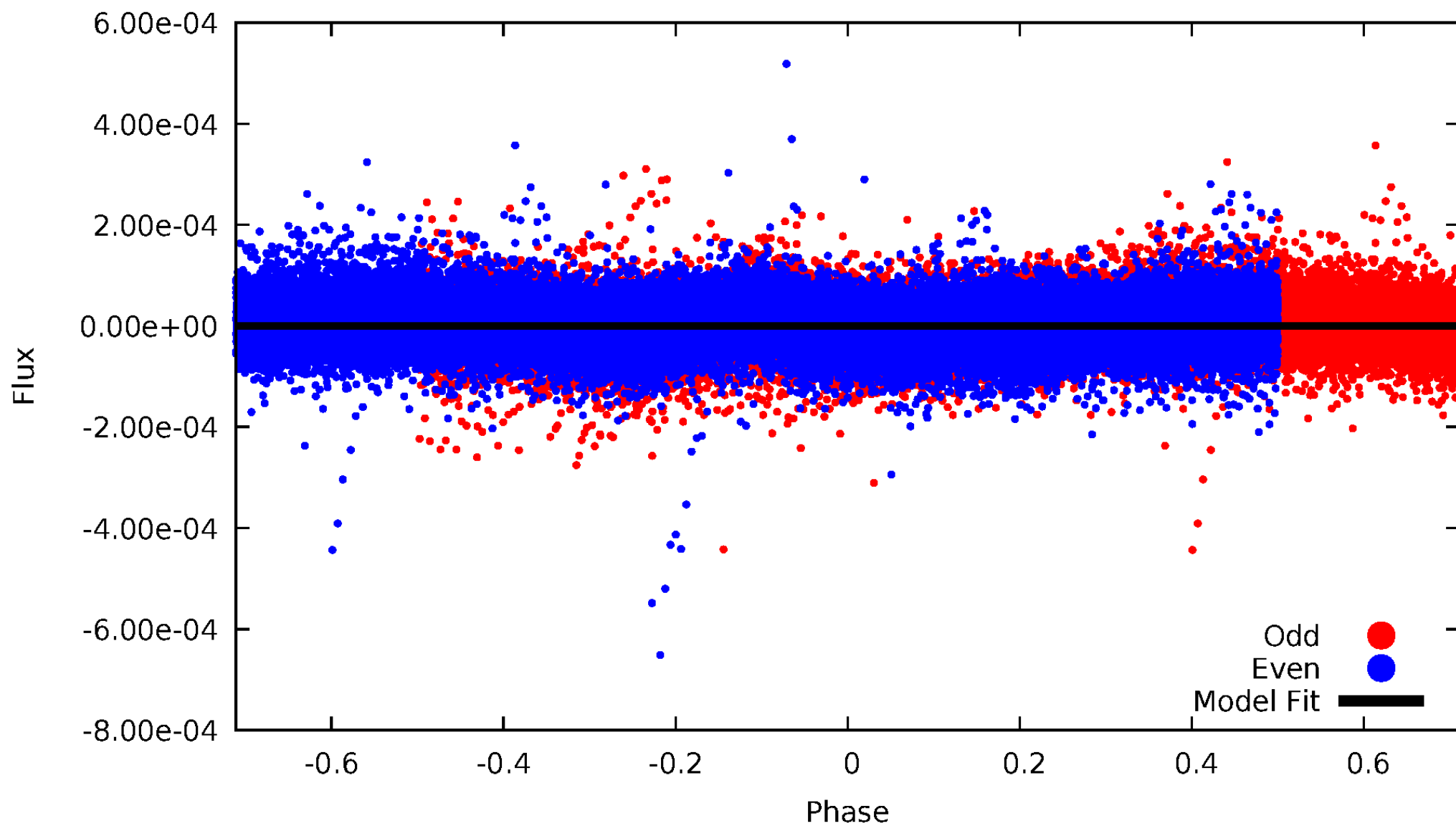


TCE 008959062-01



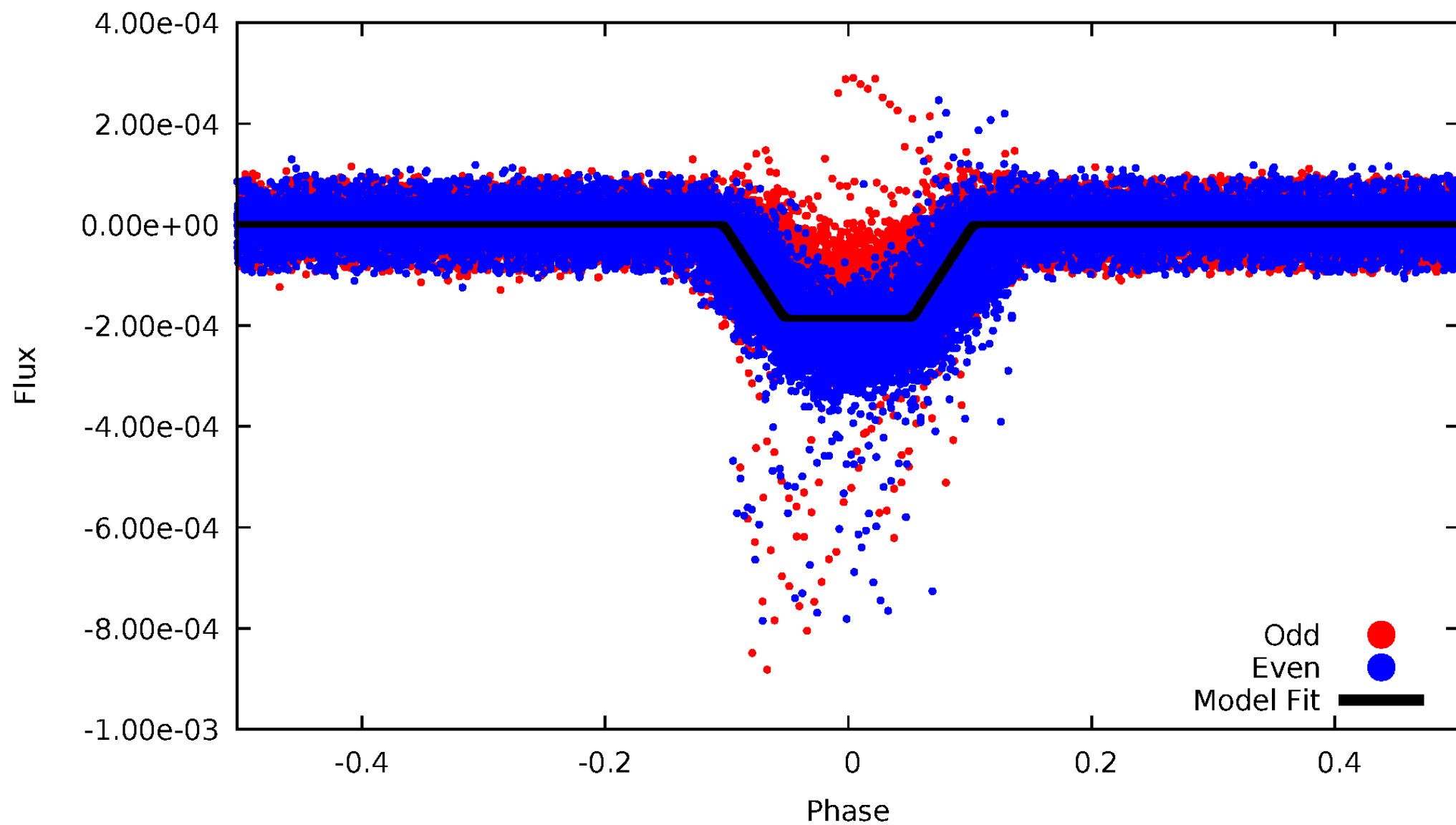
DV Odd/Even

TCE 008959062-01

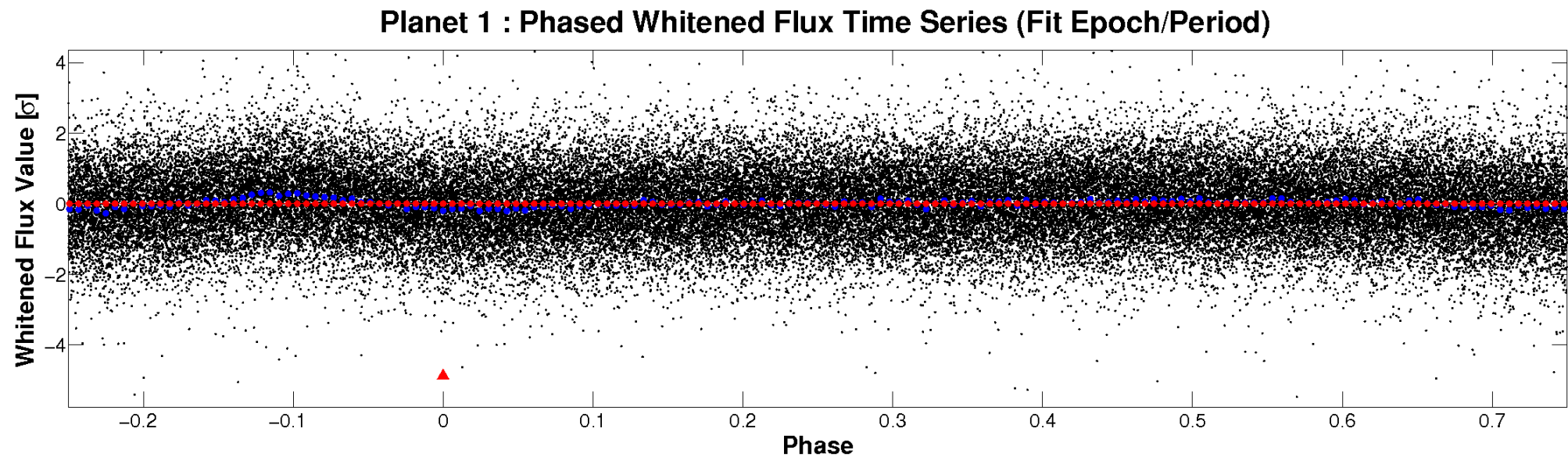
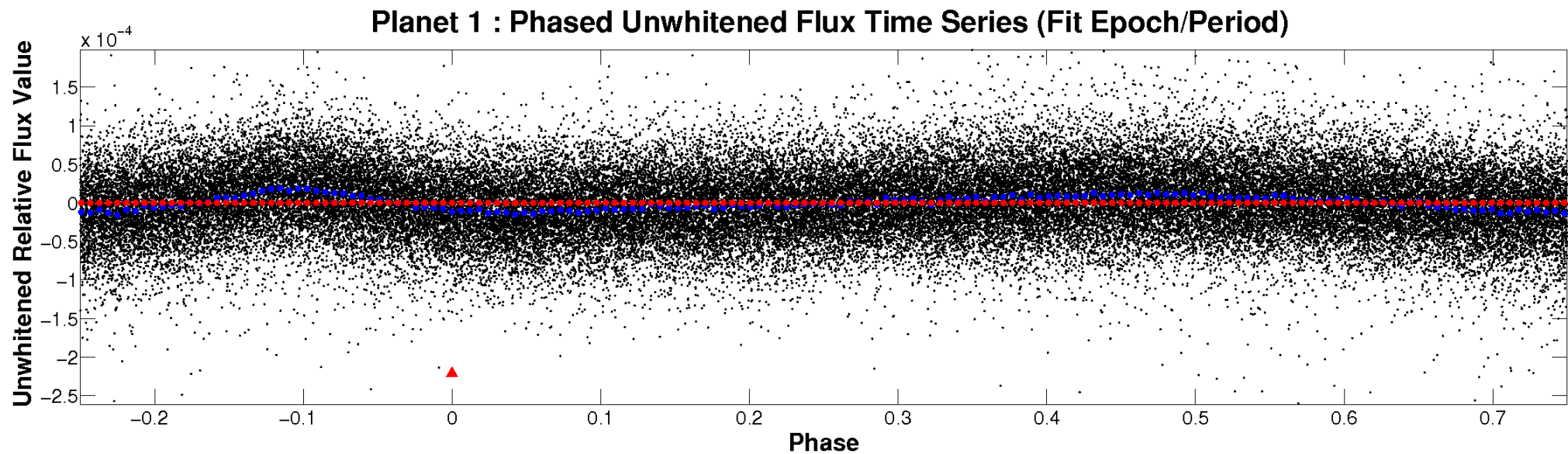


ALT Odd/Even

TCE 008959062-01

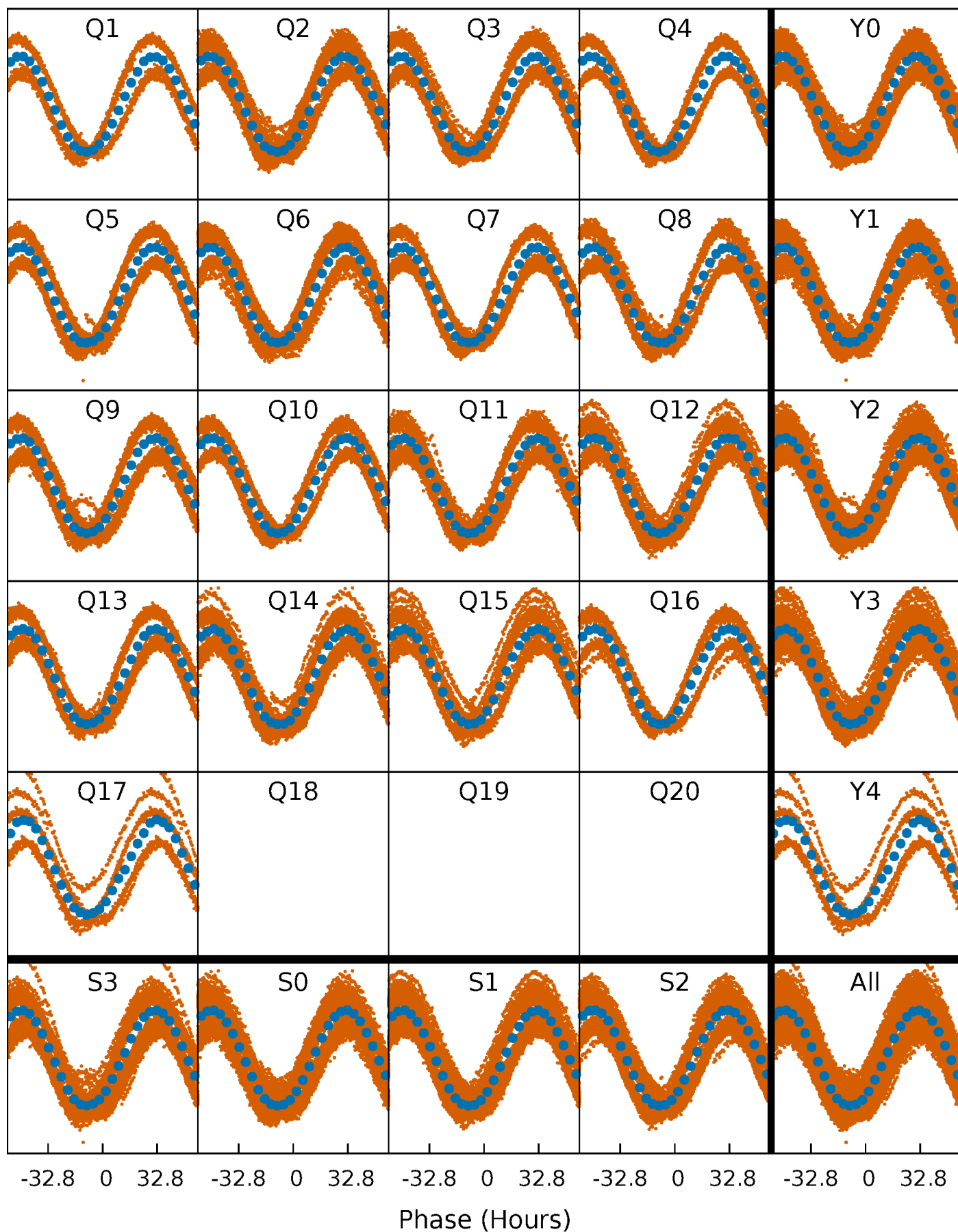


Non-Whitened Vs. Whitened Light Curve



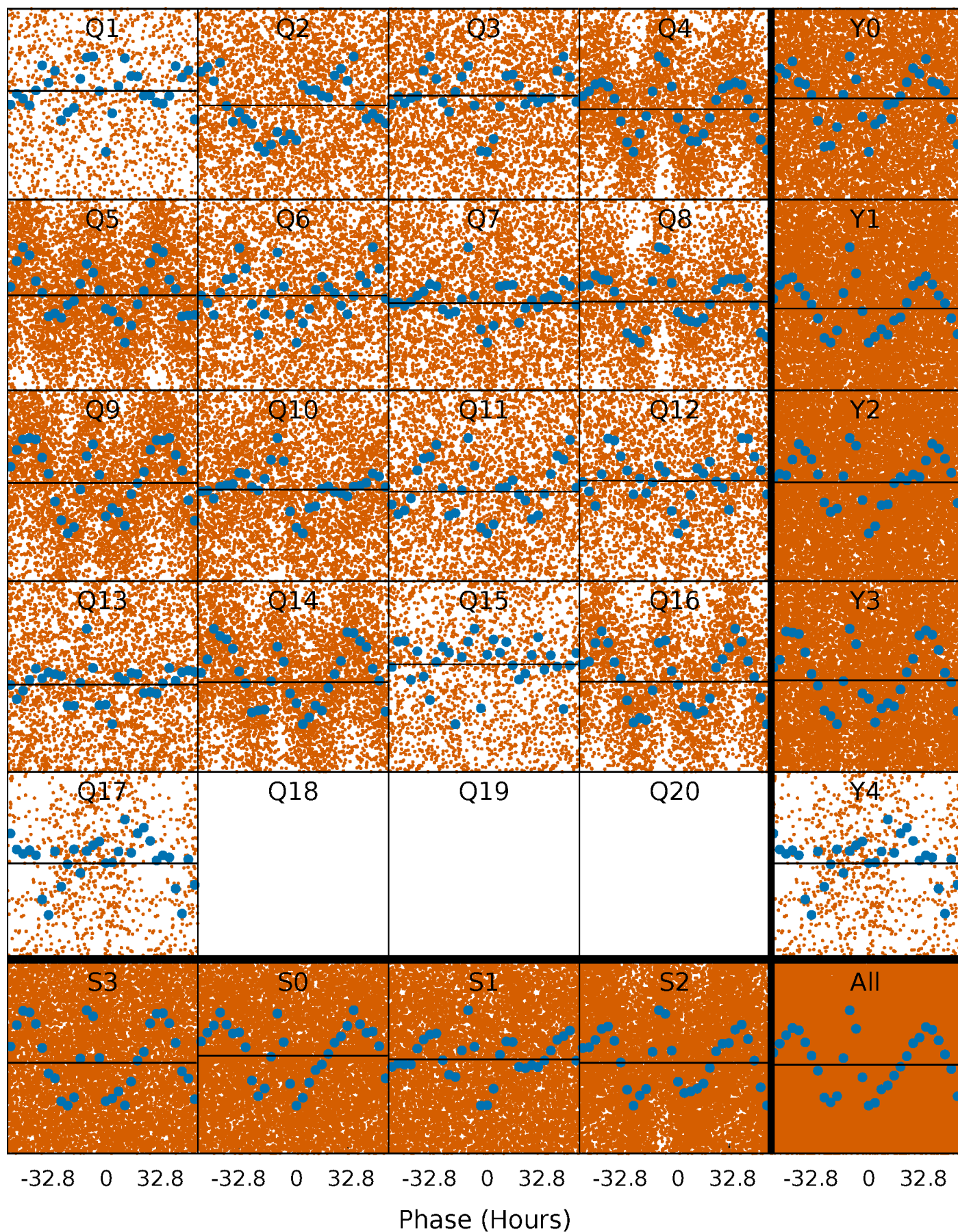
PDC Quarter-Phased Transit Curves

TCE 008959062-01 P= 3.360410 Days $T_0=133.950389$ (BKJD)



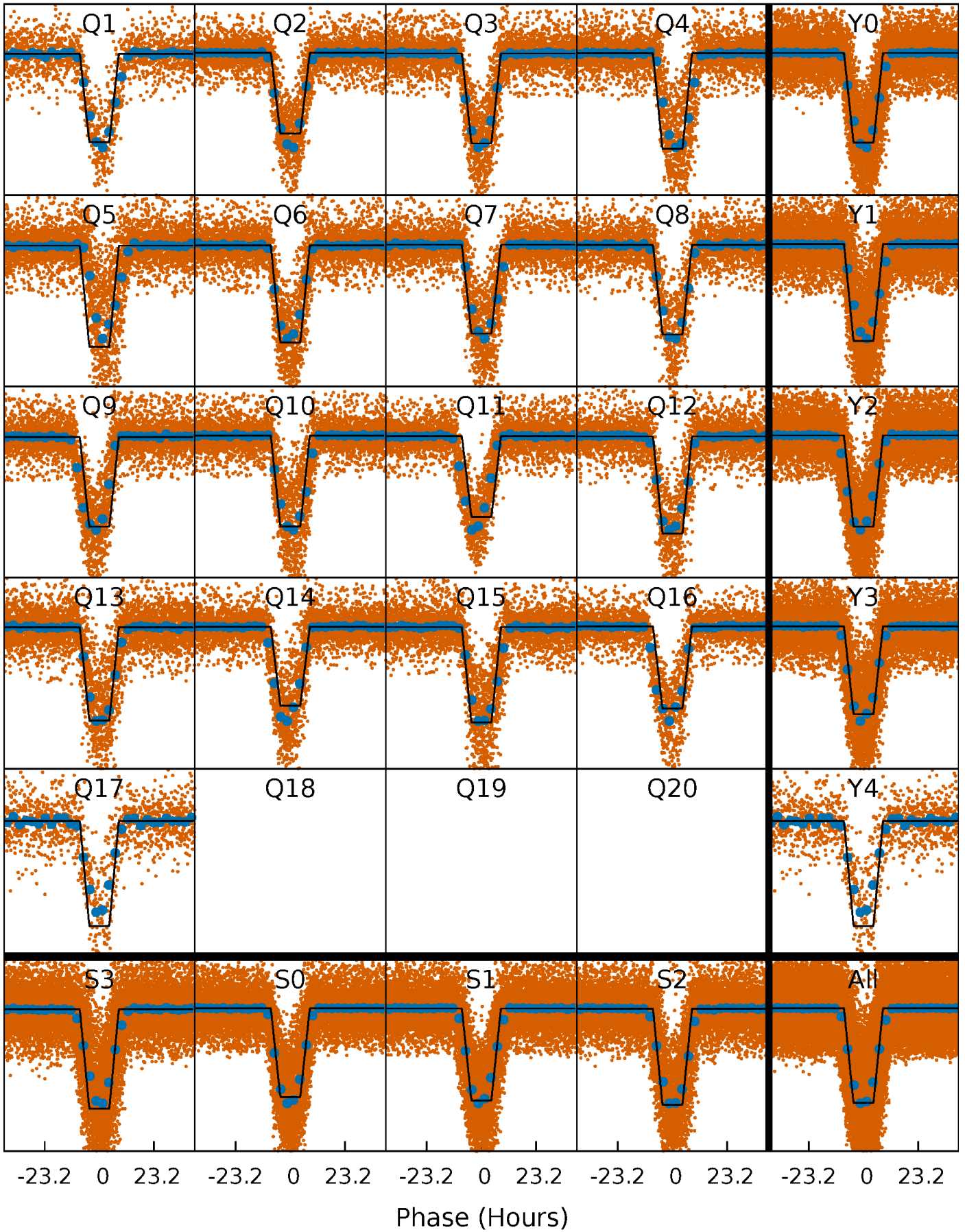
DV Quarter-Phased Transit Curves

TCE 008959062-01 P= 3.360410 Days $T_0=133.950389$ (BKJD)



Alt. Detrend Quarter-Phased Transit Curves

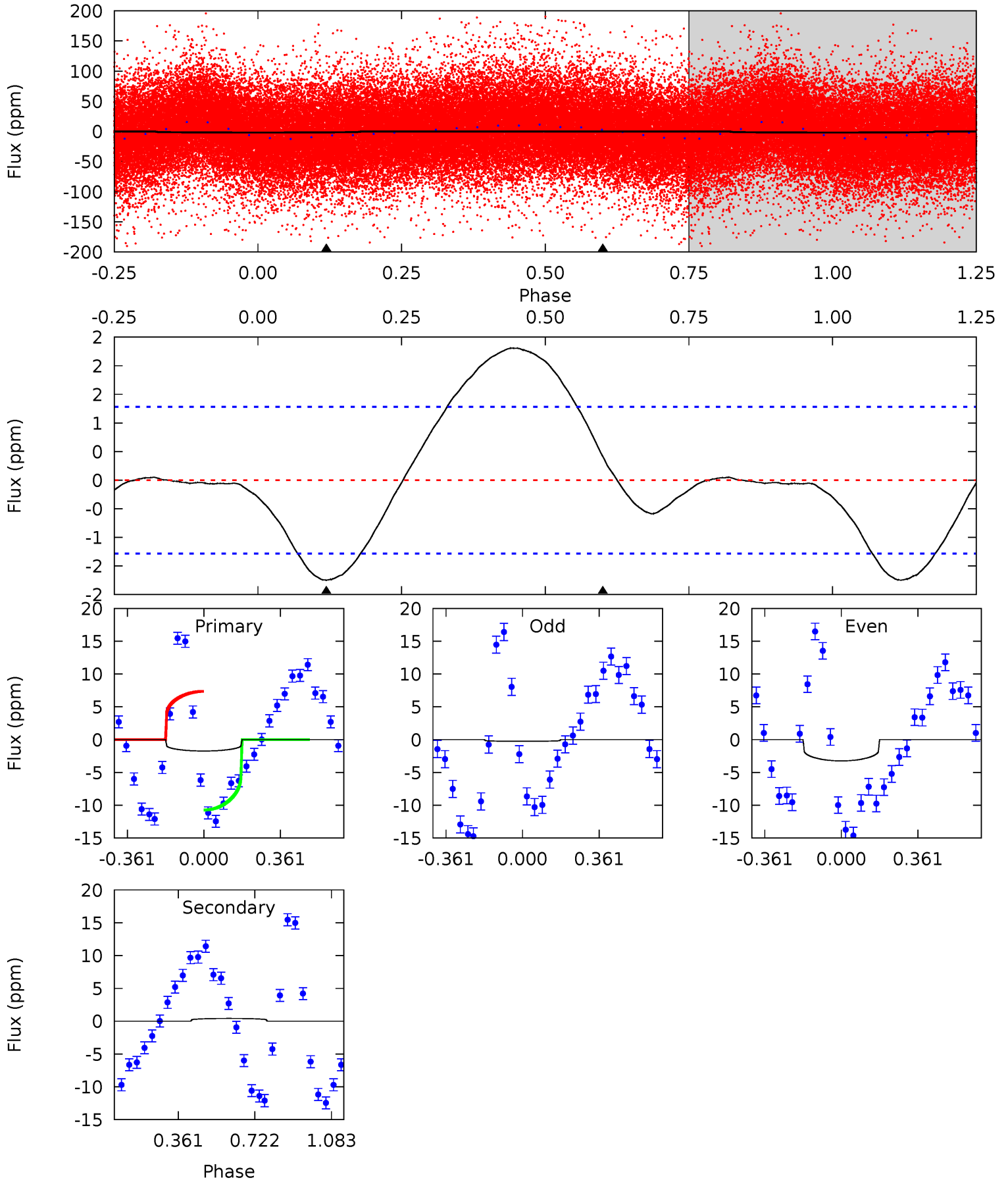
TCE 008959062-01 P= 3.360607 Days $T_0=133.913025$ (BKJD)



DV Model-Shift Uniqueness Test

008959062-01, P = 3.360410 Days, E = 130.589979 Days

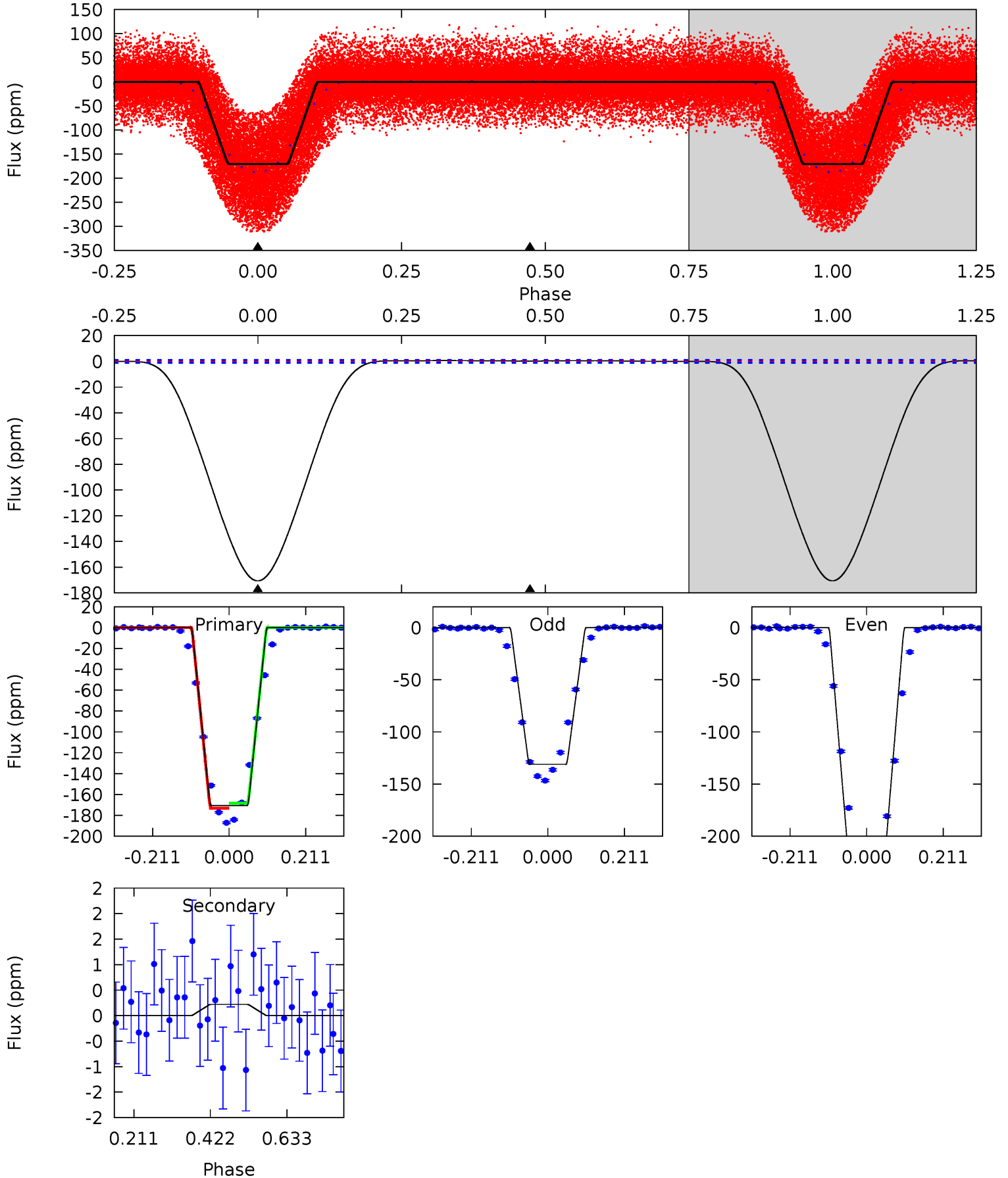
Pri	Sec	Ter	Pos	FA ₁	FA ₂	F _{Red}	Pri-Ter	Pri-Pos	Sec-Ter	Sec-Pos	Odd-Evn	DMM	Shape	TAT
5.83	-1.39	0	0	4.29	0.91	2.66	5.83	5.83	-1.39	-1.39	5.09	2.60	0.57	5.79



Alt Model-Shift Uniqueness Test

008959062-01, P = 3.360607 Days, E = 130.552418 Days

Pri	Sec	Ter	Pos	FA ₁	FA ₂	F _{Red}	Pri-Ter	Pri-Pos	Sec-Ter	Sec-Pos	Odd-Evn	DMM	Shape	TAT
661.9	-0.86	0	0	4.41	1.25	0.77	661.9	661.9	-0.86	-0.86	155.3	1.07	0.00	9.40



Stellar Parameters For KIC 008959062

	$T_{\text{eff}}(K)$	$\log(g)$	[Fe/H]	$R (R_{\odot})$	$M(M_{\odot})$	$p_{\star} (\text{g}\cdot\text{cm}^{-3})$
	8111^{+224}_{-336}	$3.713^{+0.420}_{-0.140}$	$0.000^{+0.250}_{-0.400}$	$3.325^{+0.848}_{-1.574}$	$2.081^{+0.335}_{-0.503}$	$0.080^{+0.329}_{-0.034}$
	+3%/-4%	+11%/-4%	+inf%/-inf%	+26%/-47%	+16%/-24%	+413%/-43%
Source	KIC0	KIC0	KIC0	DSEP		

KIC = Kepler Input Catalog; PHO = Photometry; SPE = Spectroscopy; AST = Asteroseismology
 TRA = Transits; DESP = Dartmouth Models; MULT = Multiple Models

Secondary Eclipse Parameters for KIC 008959062-01 / KOI

Detrend	Depth (ppm)	$R_p (R_{\oplus})$	$T_{max} (K)$	$T_{obs} (K)$	A_{obs}
DV	0 ± 0	$0.95^{+1.13}_{-0.67}$	3761^{+312}_{-417}	-4157^{+626}_{-2349}	$-0.579^{+0.530}_{-6.424}$
Alt.	0 ± 0	$4.54^{+1.95}_{-1.54}$	3755^{+319}_{-426}	-3517^{+229}_{-194}	$-0.016^{+0.017}_{-0.037}$

T_{max} = Theoretical Maximum Planetary Temperature

T_{obs} = Observed Planetary Temperature (Assuming $A=0.3$)

A_{obs} = Observed Albedo (Assuming $T=0$)

If a secondary eclipse is present, the system is likely an EB if $T_{obs} \gg T_{max}$ AND $A_{obs} \gg 1.0$

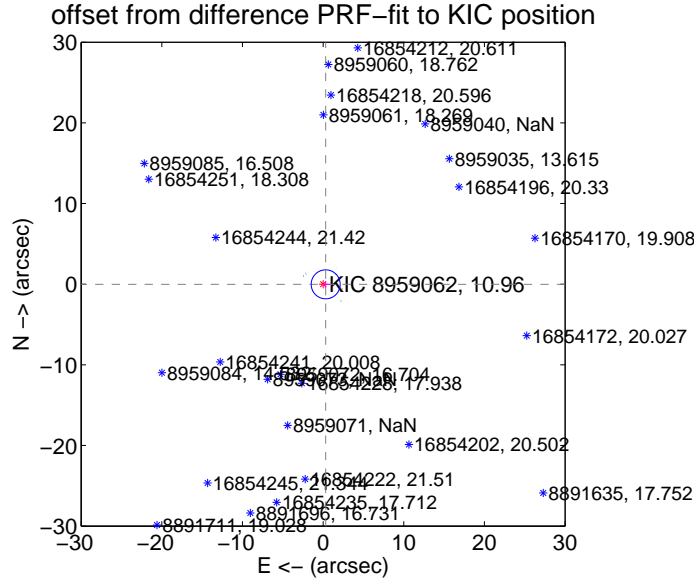
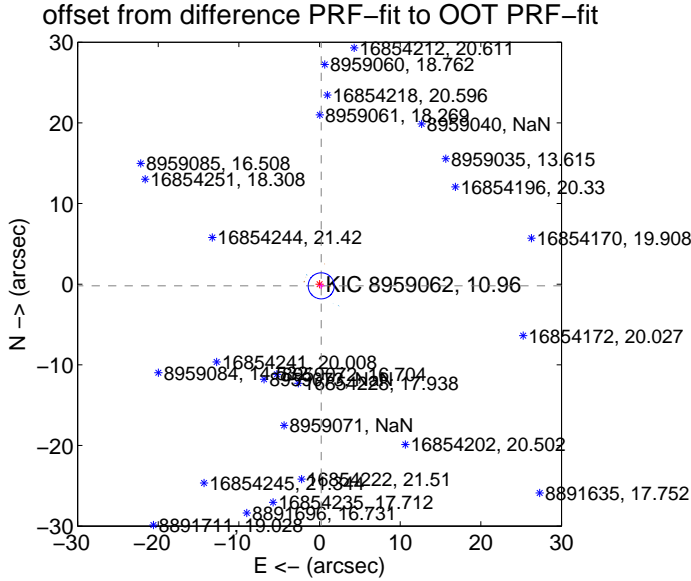
DV Centroid Data

Supplemental centroid analysis for 008959062-01. **Kepler magnitude: 10.96.** Transit SNR 0.01

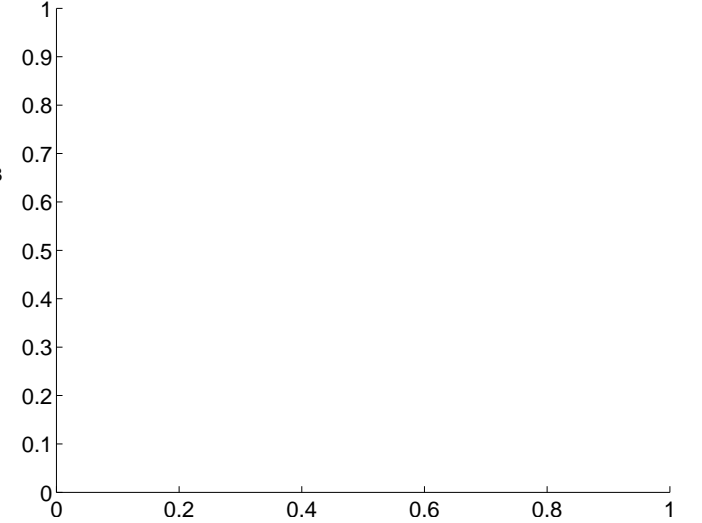
There are 9 quarters with good PRF difference image offsets

The direct PRF centroid is offset from the target star catalog position by about 0.66 arcsec

	Distance in arcsec	Distance / σ	Δ RA	Δ Dec
PRF-fit source offset from OOT	0.295 ± 0.538	0.55	-0.209 ± 0.418	-0.208 ± 0.395
PRF-fit source offset from KIC position	0.319 ± 0.599	0.53	-0.319 ± 0.599	-0.021 ± 0.395
photometric centroid source offset	—	—	—	—

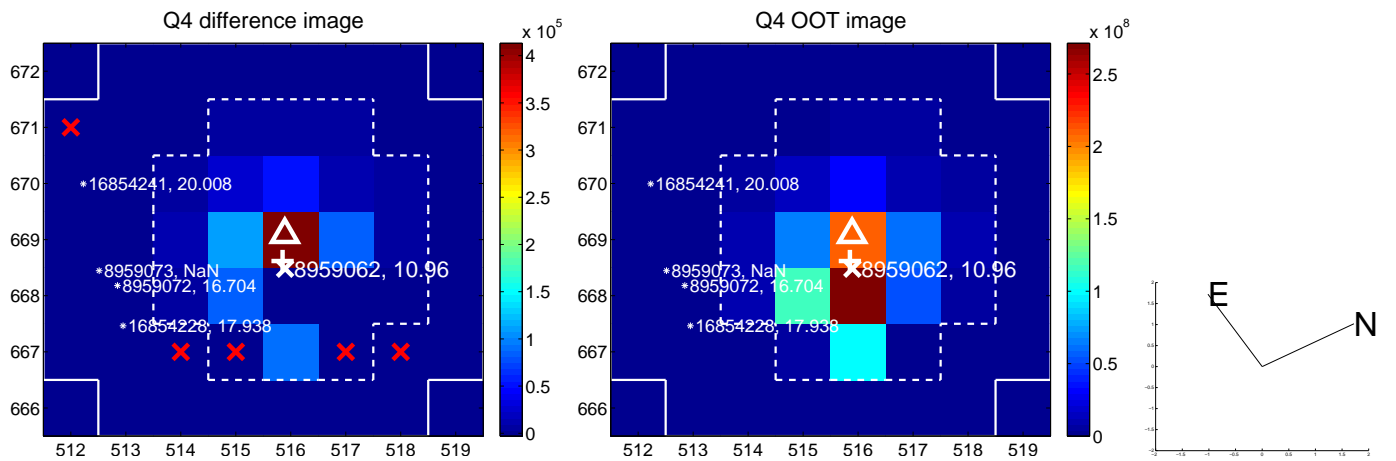
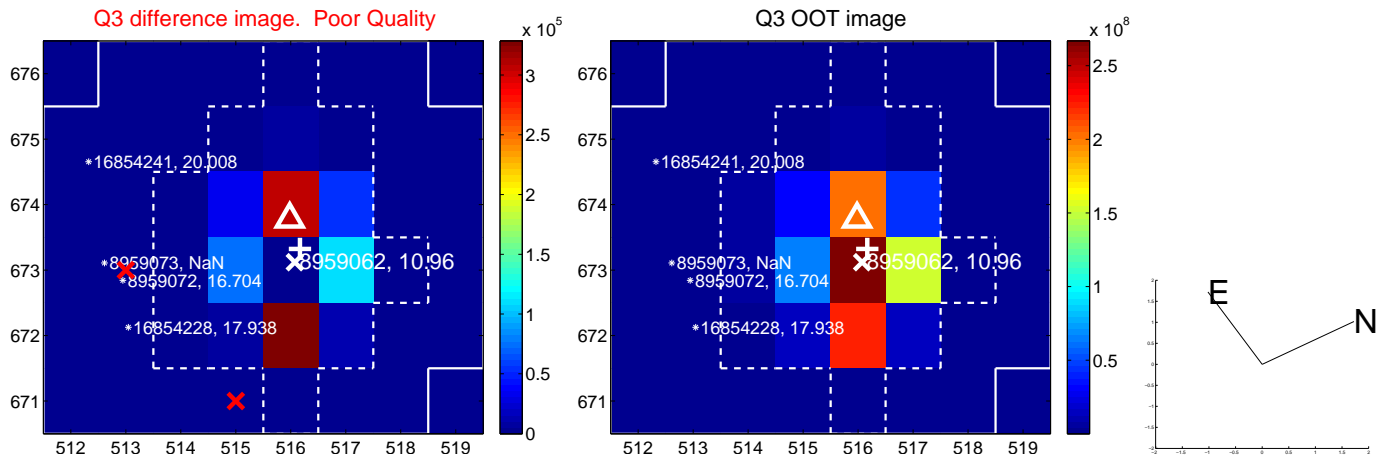
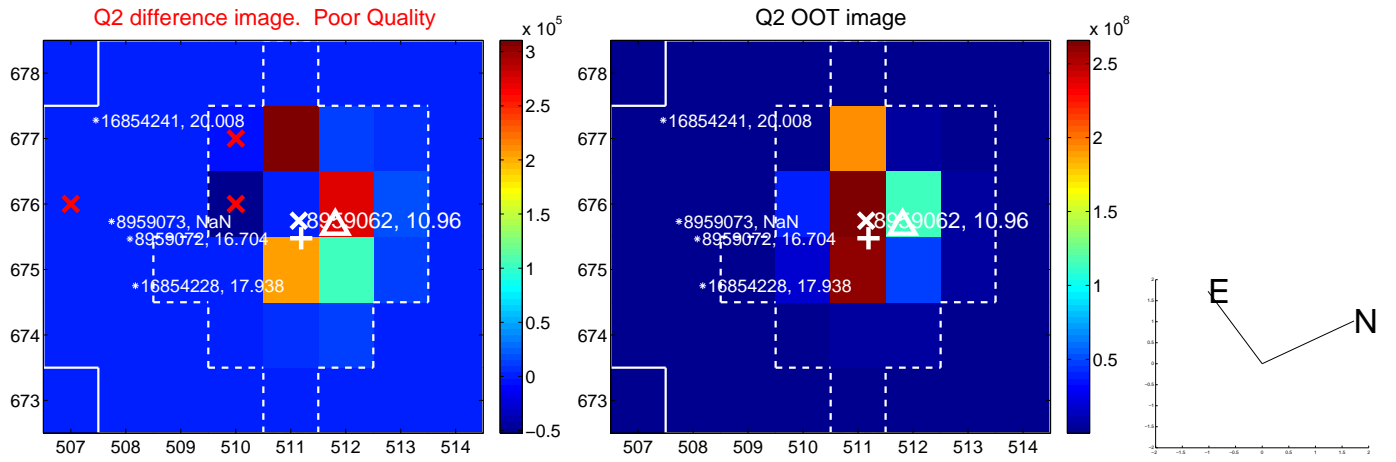
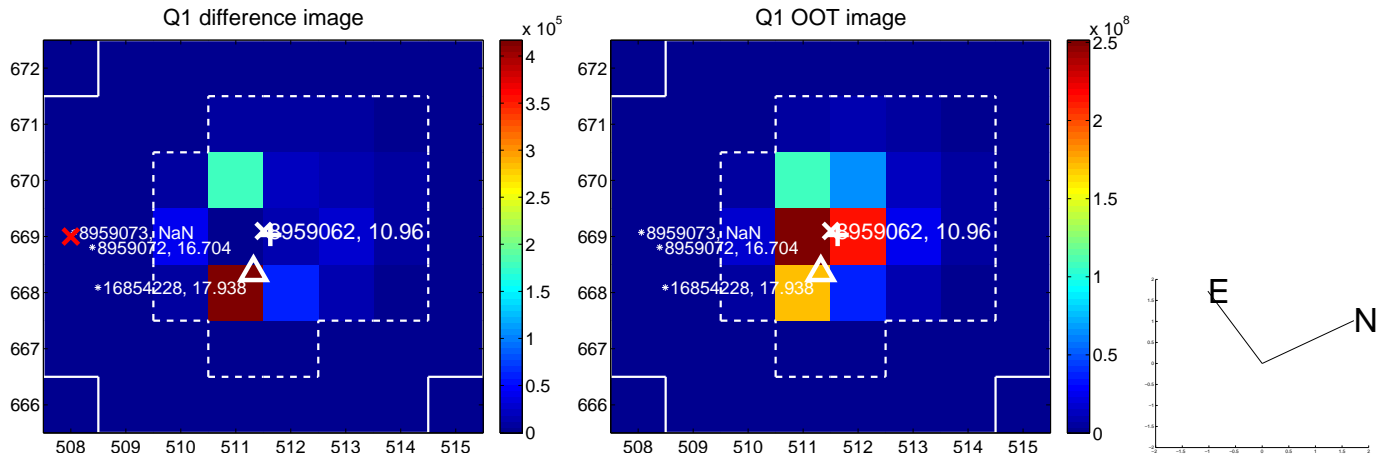


There are no photometric centroids

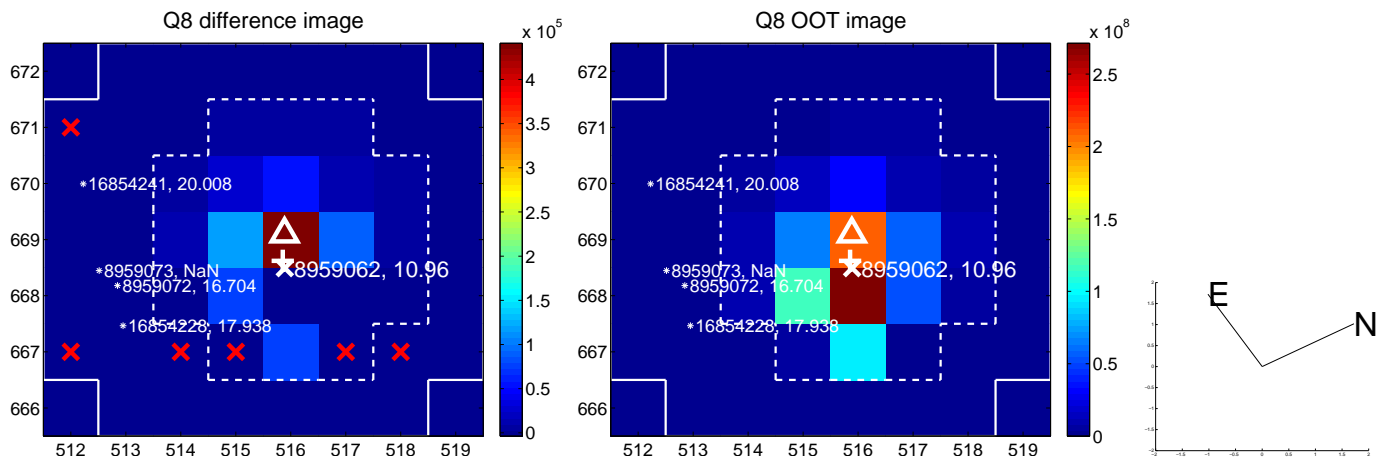
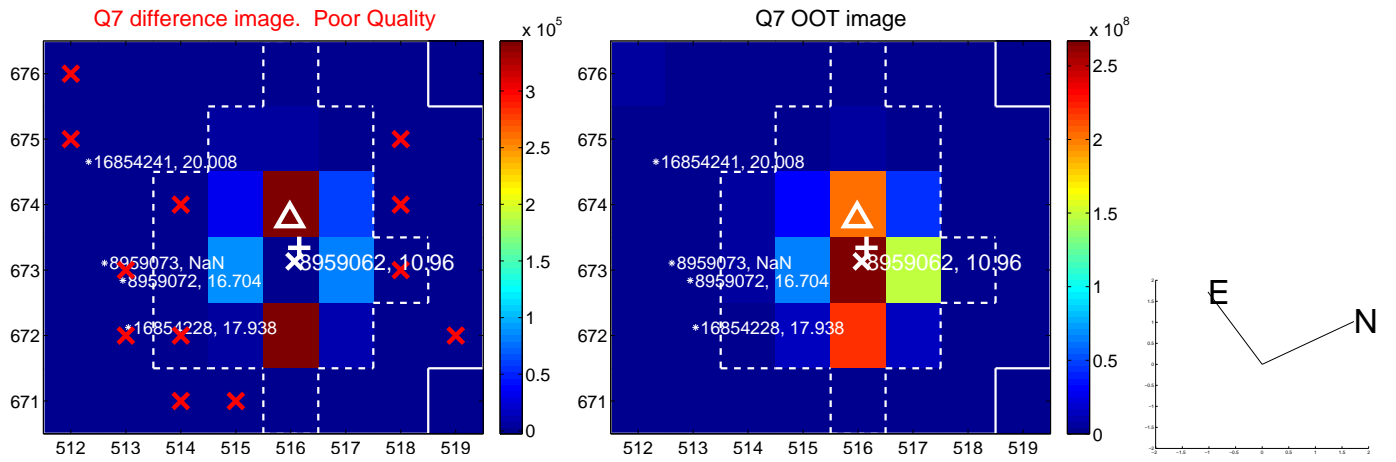
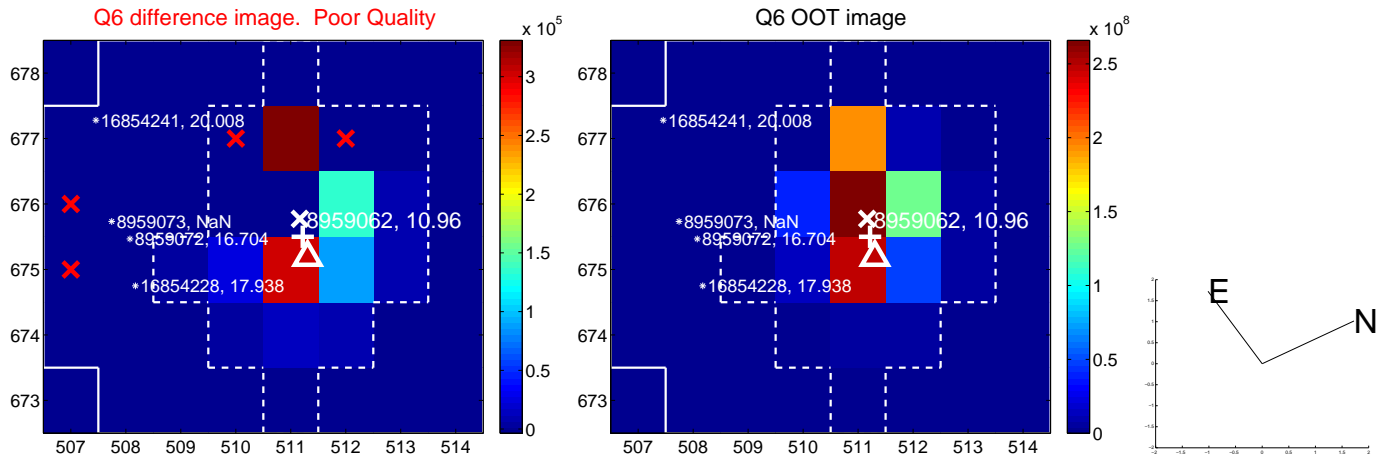
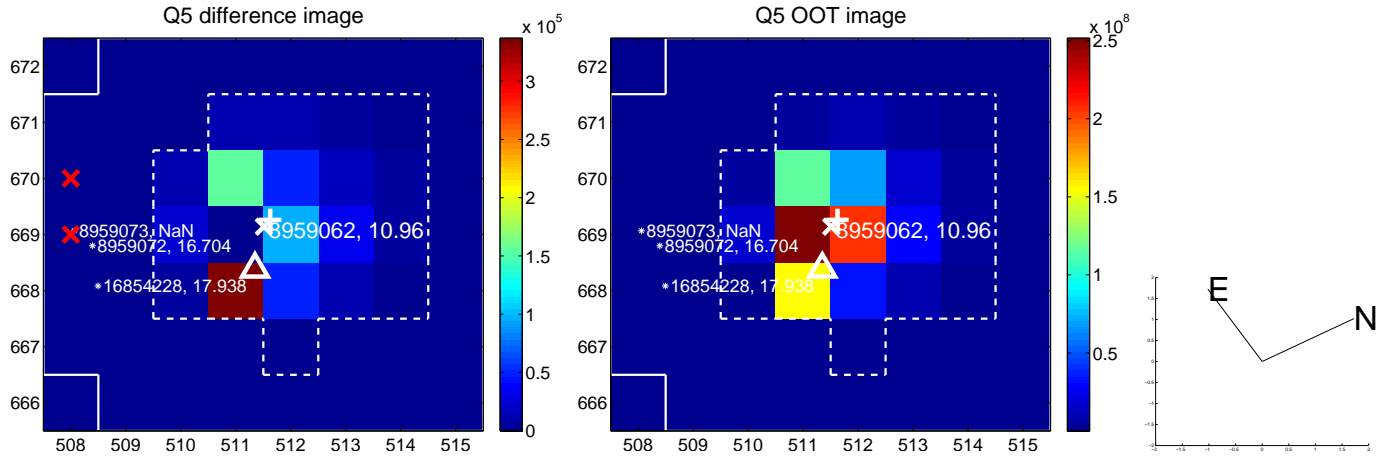


Centroid source offsets from the target star reconstructed from PRF and photometric centroids. **Sky blue crosses: good quarterly centroid offsets; Vermillion crosses: bad quarterly centroid offsets;** magenta cross: average over quarters. Length of the crosses: one- σ uncertainty. Blue circle: three- σ . Red *: target star. Blue *: Other stars. Text next to a star gives its KIC ID and kepmag. KIC IDs > 15,000,000 are from the UKIRT catalog.

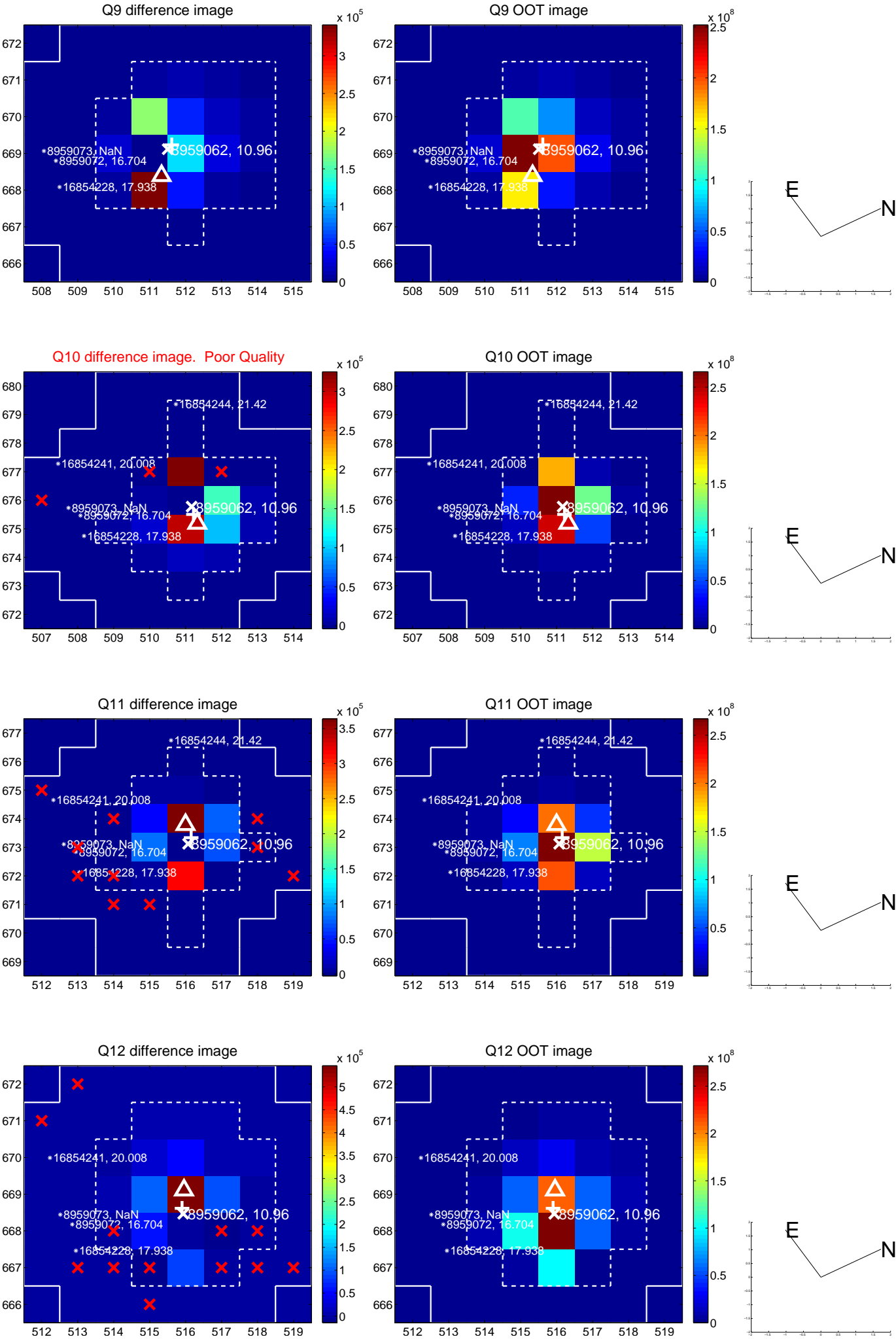
white \times : KIC target position; $+$: OOT centroid; \triangle : difference centroid. red \times : large negative pixel value.



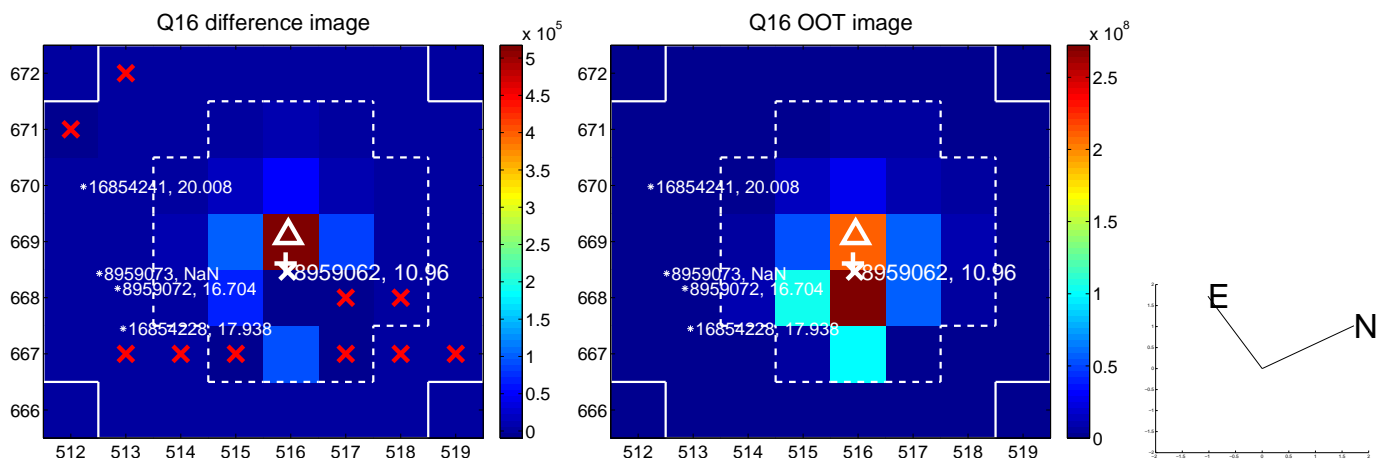
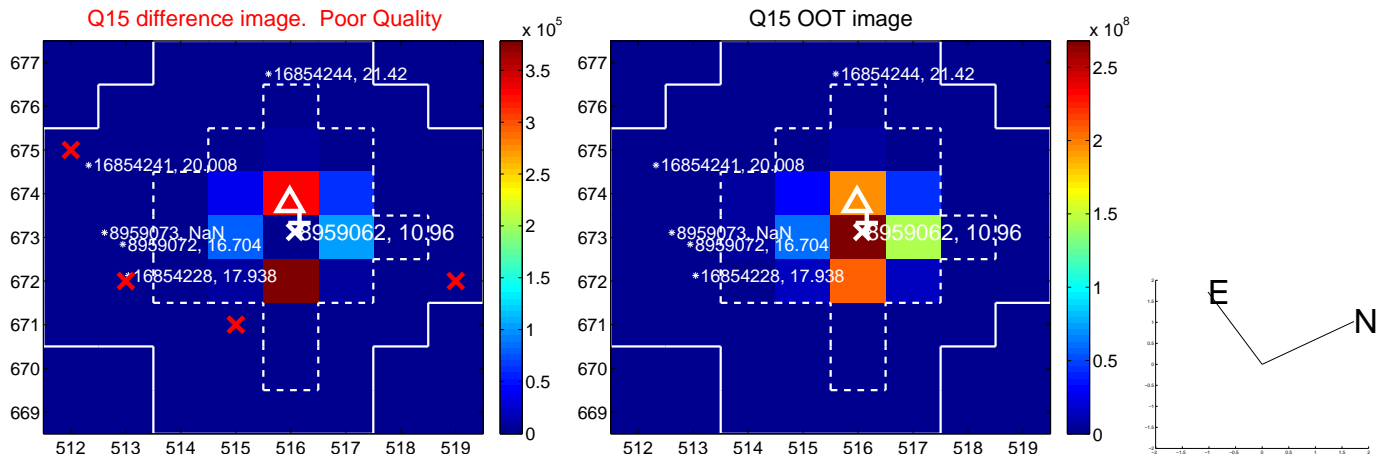
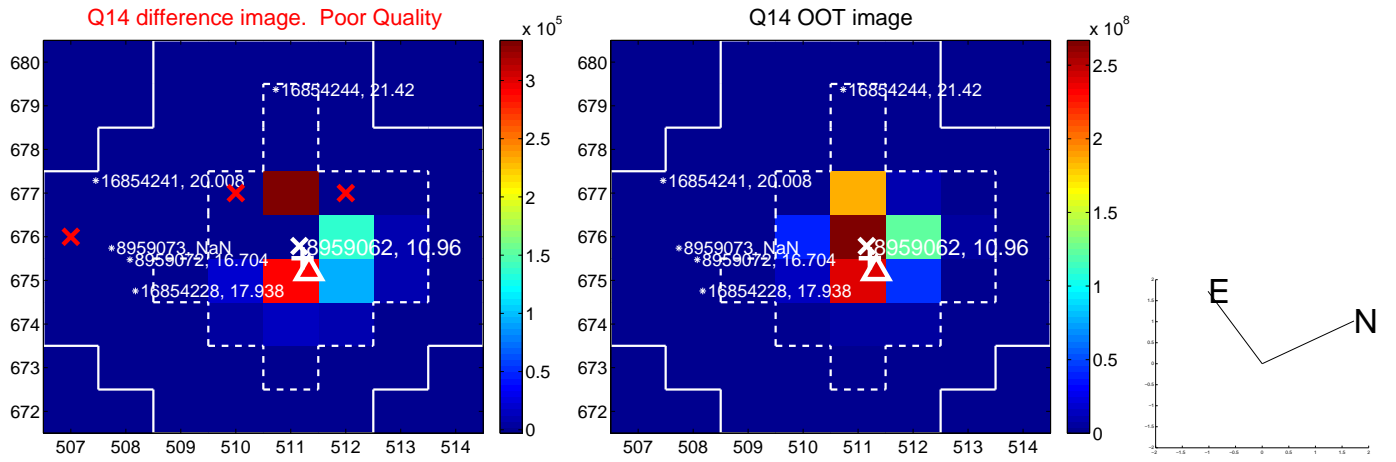
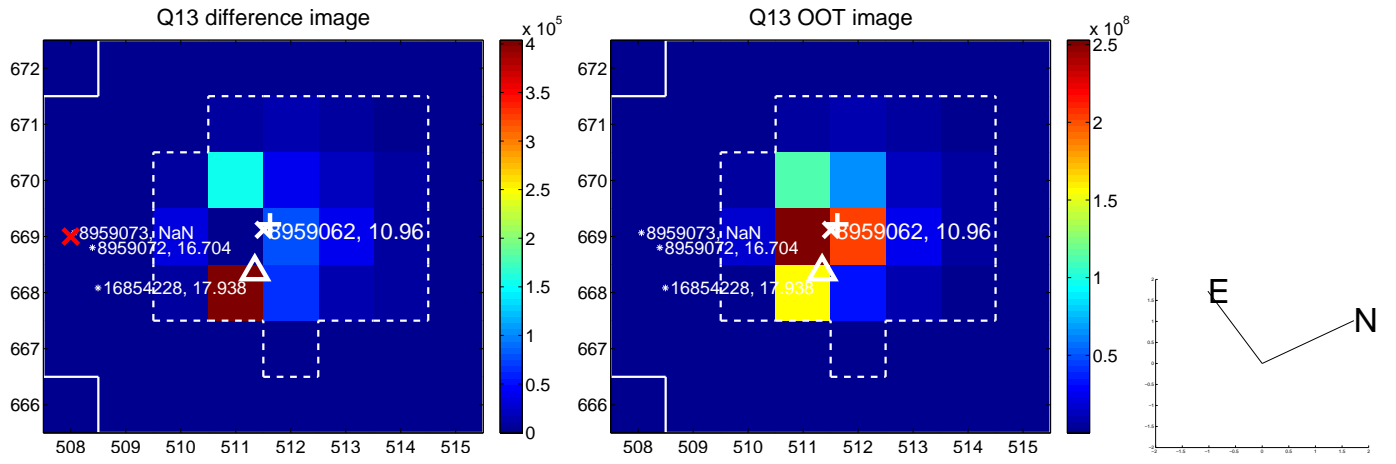
white \times : KIC target position; +: OOT centroid; \triangle : difference centroid. red \times : large negative pixel value.



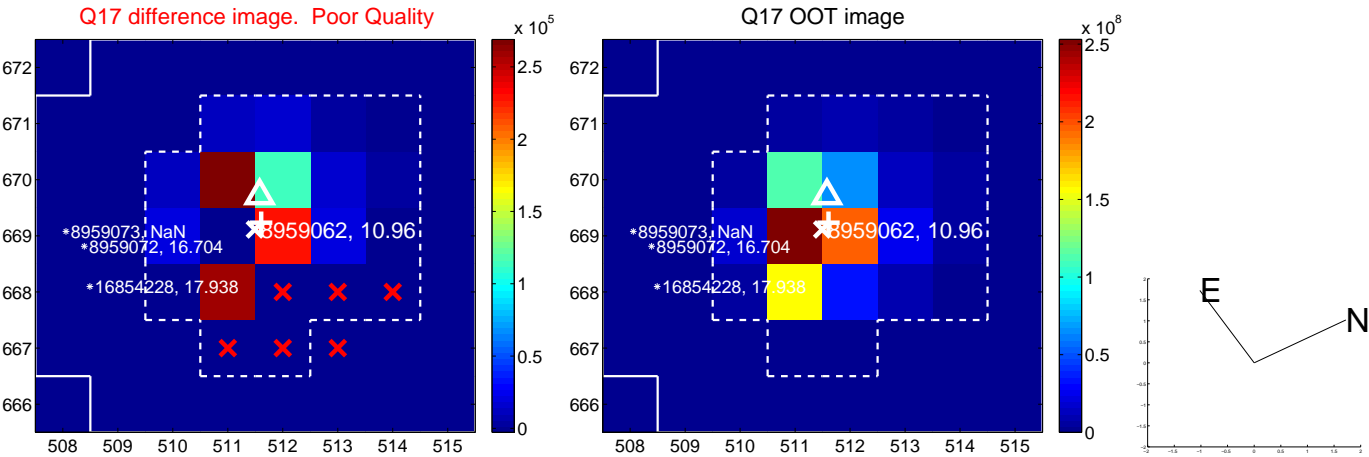
white \times : KIC target position; +: OOT centroid; \triangle : difference centroid. red \times : large negative pixel value.



white \times : KIC target position; +: OOT centroid; \triangle : difference centroid. red \times : large negative pixel value.



white \times : KIC target position; $+$: OOT centroid; \triangle : difference centroid. red \times : large negative pixel value.



folded centroid time series figure for this object.

UKIRT Image

Declination

