

KIC 008956850

Q1-17 DR25 TCE Parameters

TCE	Run Type	KOI?	Period (Days)	Epoch (BKJD)	Depth (ppm)	Duration (Hours)	MES	SNR	R_{\star} (R_{\odot})	T_{\star} (K)	R_p (R_{\oplus})	S_p (S_{\oplus})
008956850-01	OBS	No	1.562242	132.993275	16.7	5.729	12.5	12.6	8.77	6851	4.08	0.00

Robovetter Results

TCE	Run Type	Disp	Score	N	S	C	E	Comments
008956850-01	OBS	FP	0.00	1	0	0	0	LPP_DV—LPP_ALT—MOD_NONUNIQ_DV—MOD_NONUNIQ_ALT—MOD_TER_ALT—MOD_POS_ALT

Notes: OBS = Observed. INJ = Injected. INV = Inverted. SCR = Scrambled.

N = Not Transit-Like. S = Stellar Eclipse. C = Centroid Offset. E = Ephemeris Match.

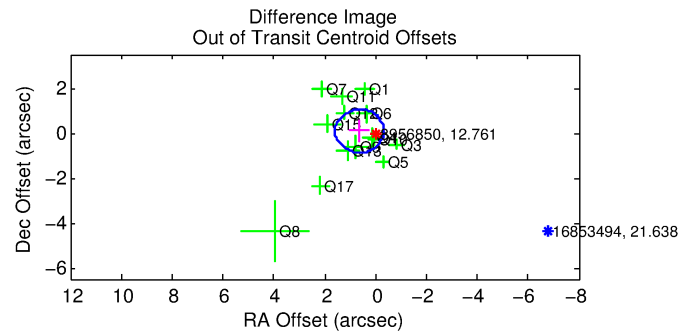
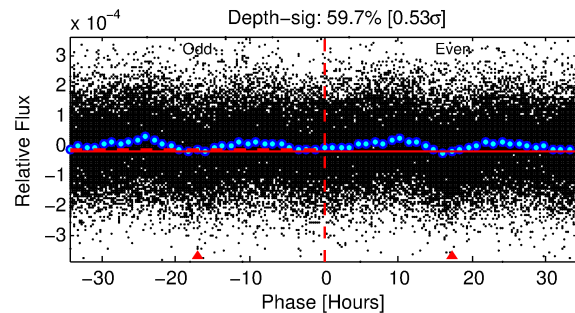
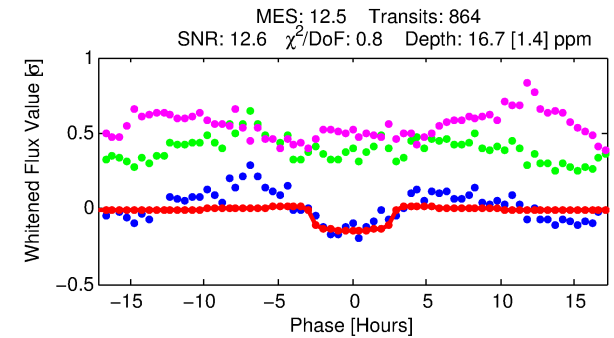
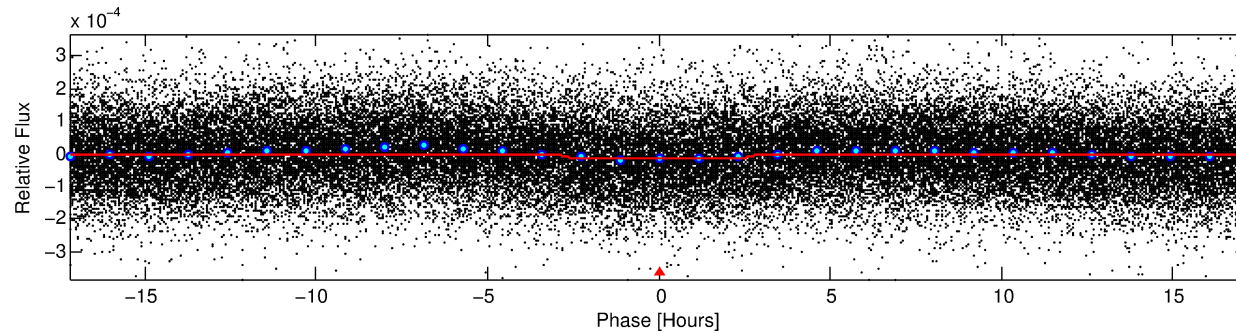
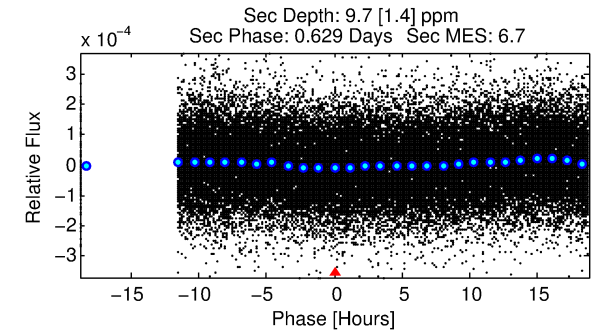
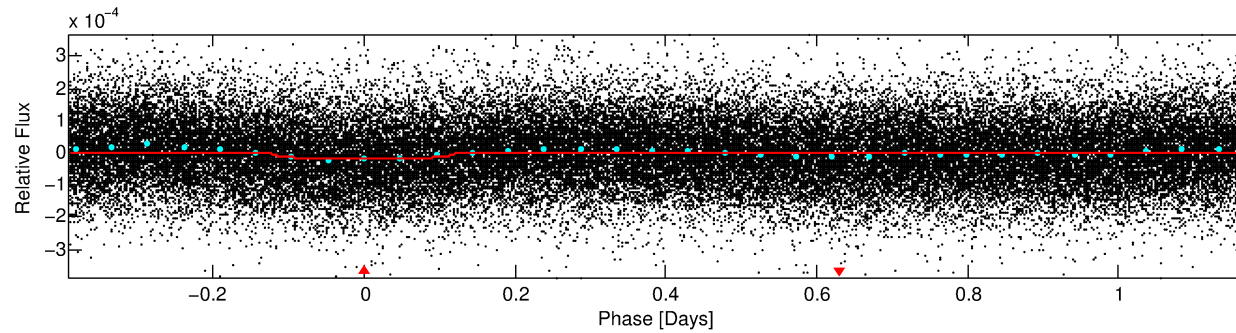
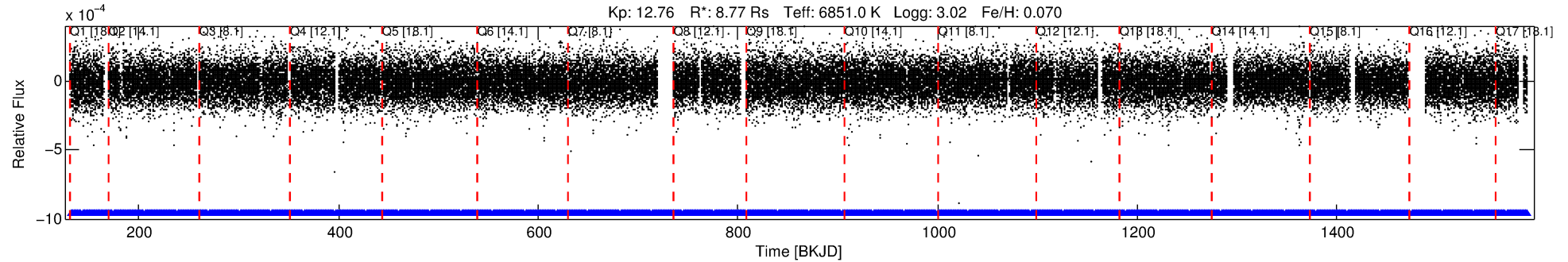
See http://exoplanetarchive.ipac.caltech.edu/docs/API_kepcandidate_columns.html#proj_disp_col for comment definitions.

Ephemeris Match Information For 008956850-01

No Significant Match Found

DV One-Page Summary

KIC: 8956850 Candidate: 1 of 1 Period: 1.562 d



DV Fit Results:

Period = 1.56224 [0.00001] d
Epoch = 132.9933 [0.0044] BKJD
Rp/R* = 0.0043 [0.0012]
a/R* = 1.41 [1.14]
b = 0.86 [0.49]
Seff = N/A
Teq = N/A
Rp = 4.08 [2.70] Re
a = N/A
Ag = N/A
Teffp = N/A

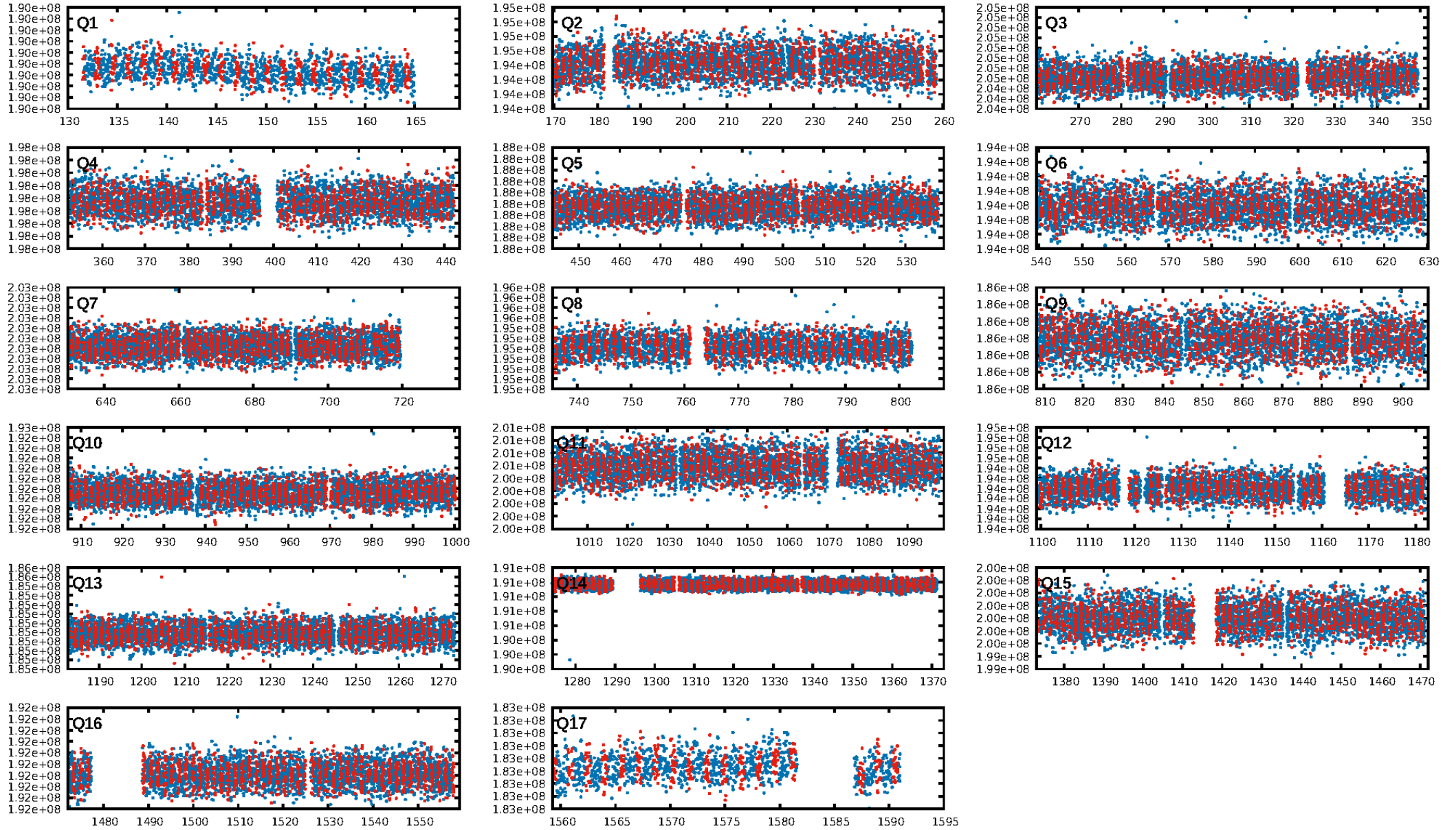
DV Diagnostic Results:

ShortPeriod-sig: N/A
LongPeriod-sig: N/A
ModelChiSquare2-sig: N/A
ModelChiSquareGof-sig: N/A
Bootstrap-pfa: 5.62e-29
RollingBand-fgt: 1.00 [824/824]
GhostDiagnostic-chr: 2.886
Centroid-sig: 1.6%
Centroid-so: 1.781 arcsec [2.02σ]
OotOffset-rm: 0.639 arcsec [2.00σ]
KicOffset-rm: 0.651 arcsec [2.05σ]
OotOffset-st: 2/4/3/5 [14]
KicOffset-st: 2/4/3/5 [14]
DiffImageQuality-fgm: 0.93 [13/14]
DiffImageOverlap-fno: 1.00 [17/17]

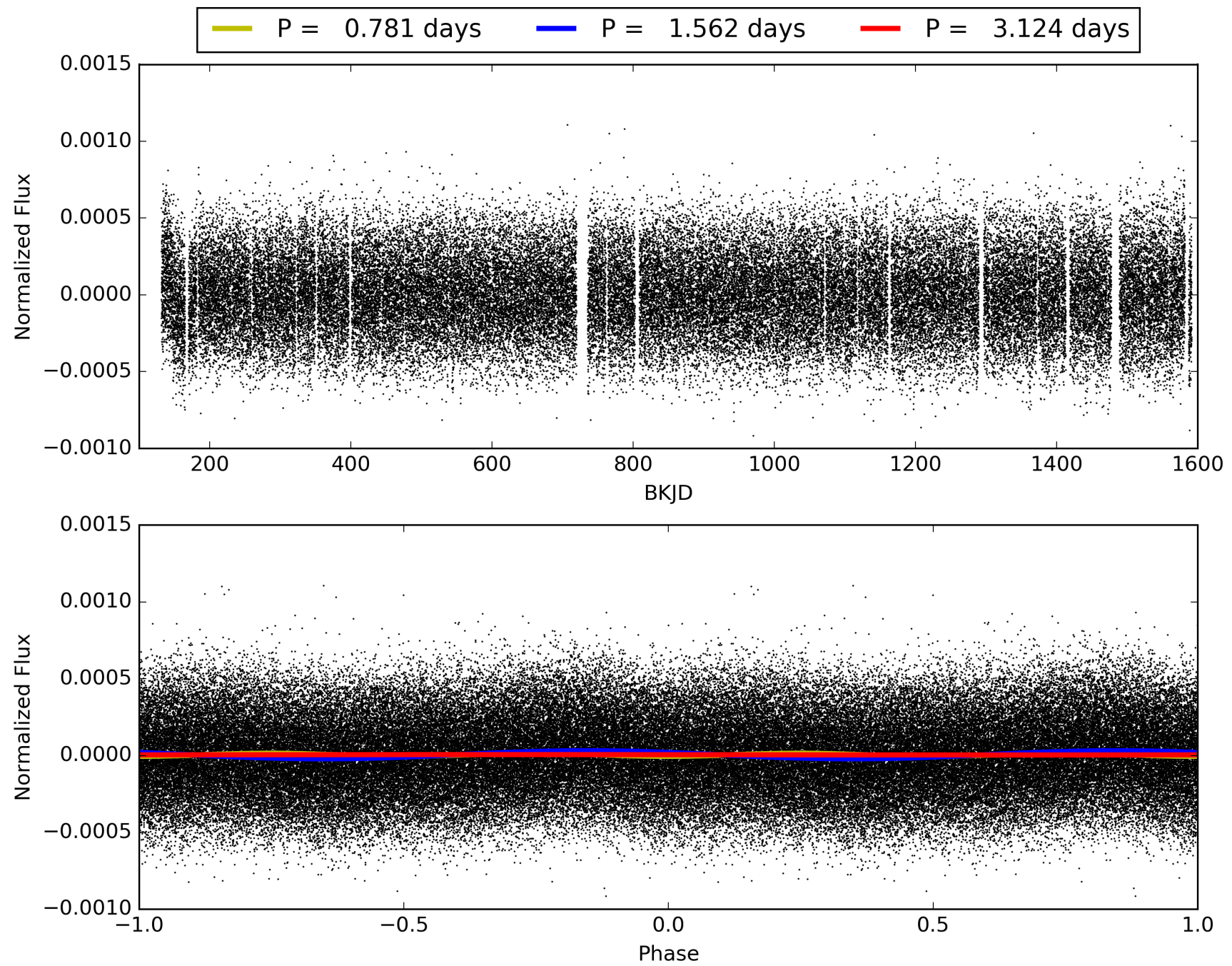
Software Revision: svn+ssh://murzim/repo/soc/tags/release/9.3.42@60958 -- Date Generated: 31-Jan-2016 16:50:29 Z

This Data Validation Report Summary was produced in the Kepler Science Operations Center Pipeline at NASA Ames Research Center

TCE 008956850-01, PDC Light Curves

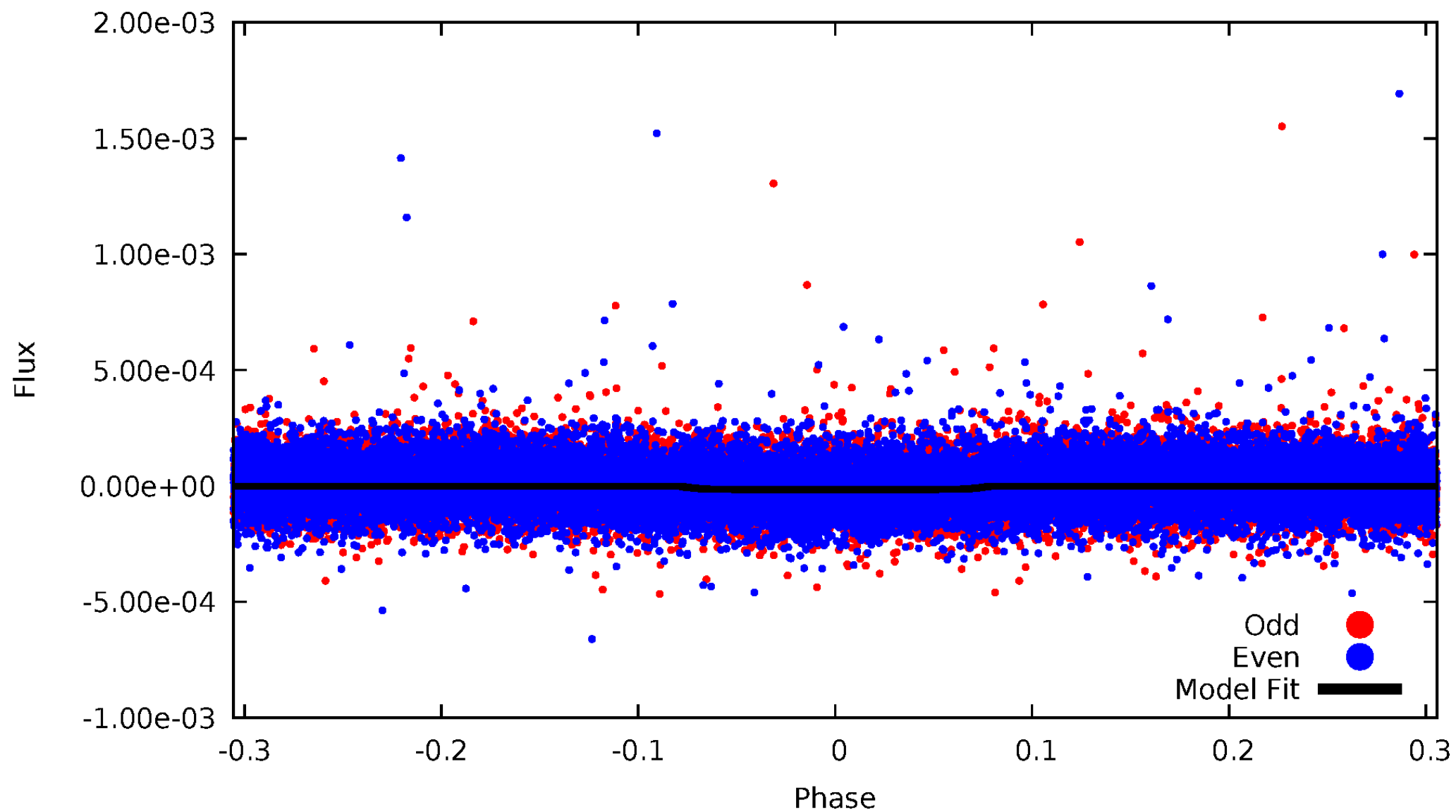


TCE 008956850-01



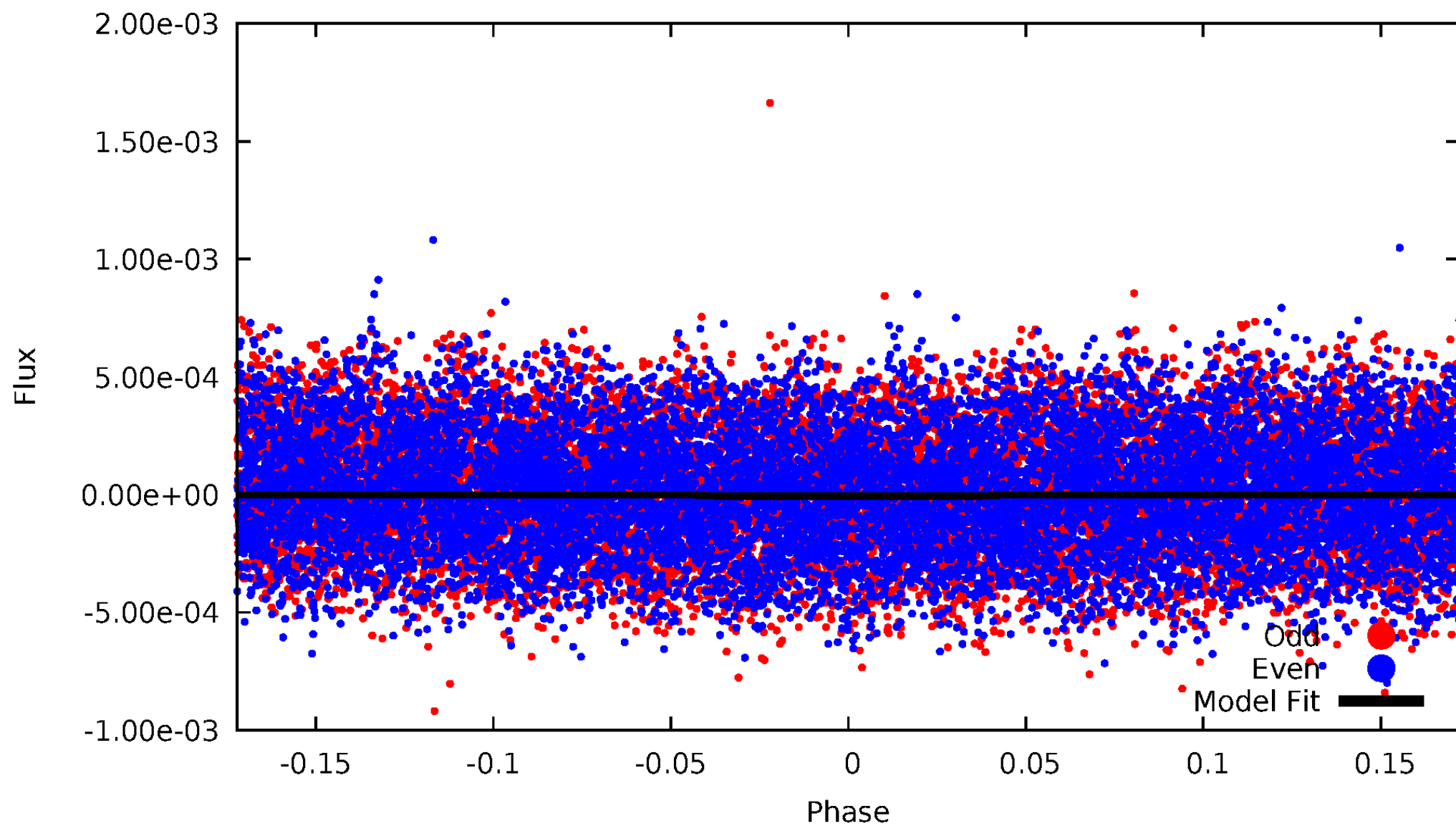
DV Odd/Even

TCE 008956850-01



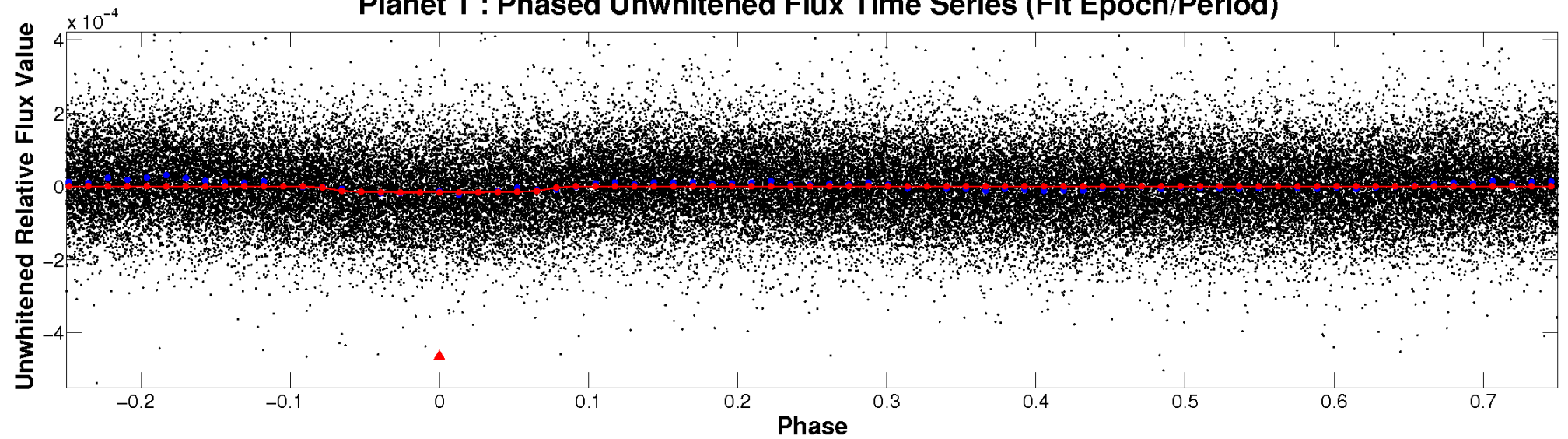
ALT Odd/Even

TCE 008956850-01

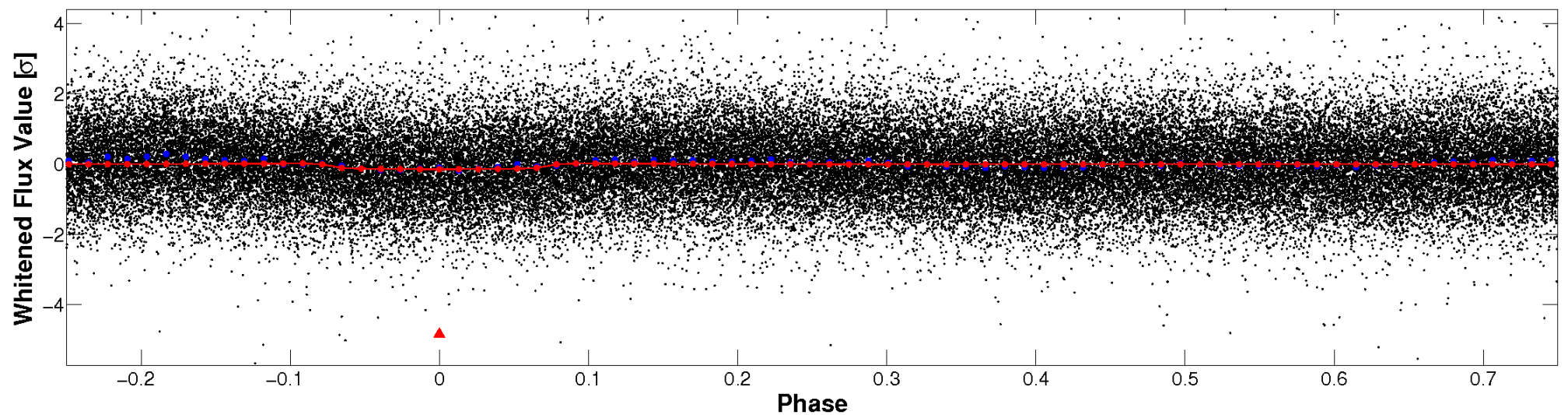


Non-Whitened Vs. Whitened Light Curve

Planet 1 : Phased Unwhitened Flux Time Series (Fit Epoch/Period)

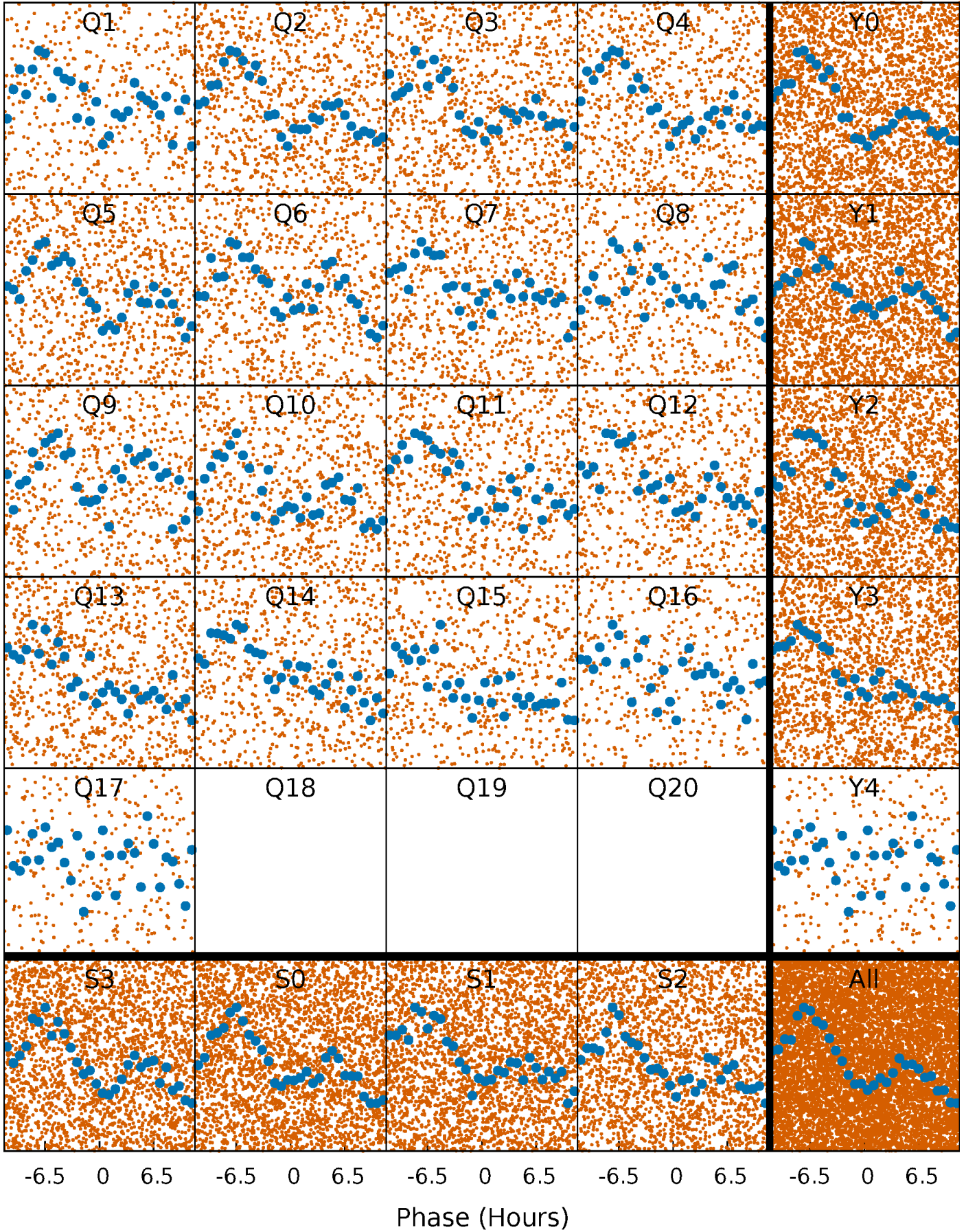


Planet 1 : Phased Whitened Flux Time Series (Fit Epoch/Period)



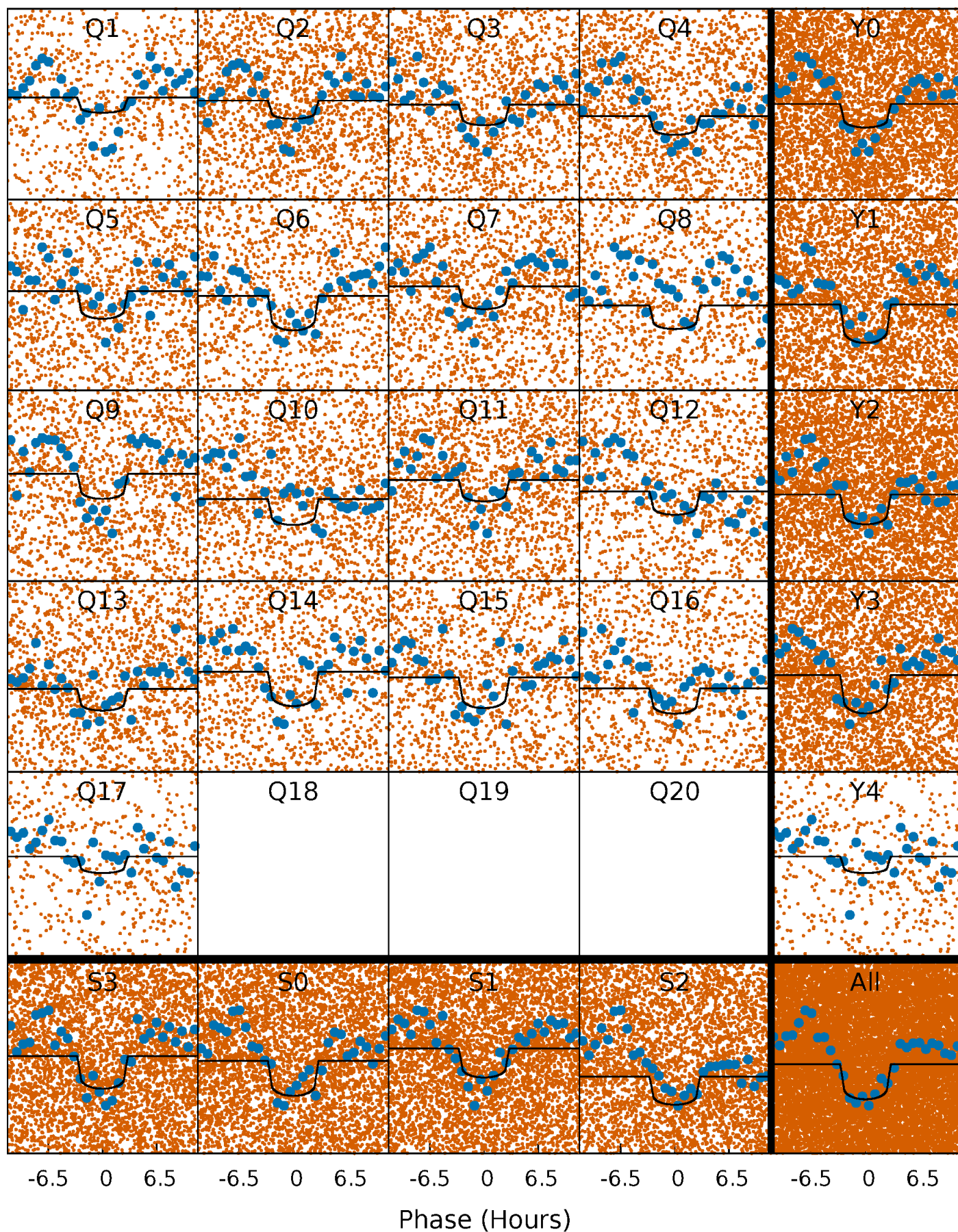
PDC Quarter-Phased Transit Curves

TCE 008956850-01 P= 1.562242 Days $T_0=132.993276$ (BKJD)



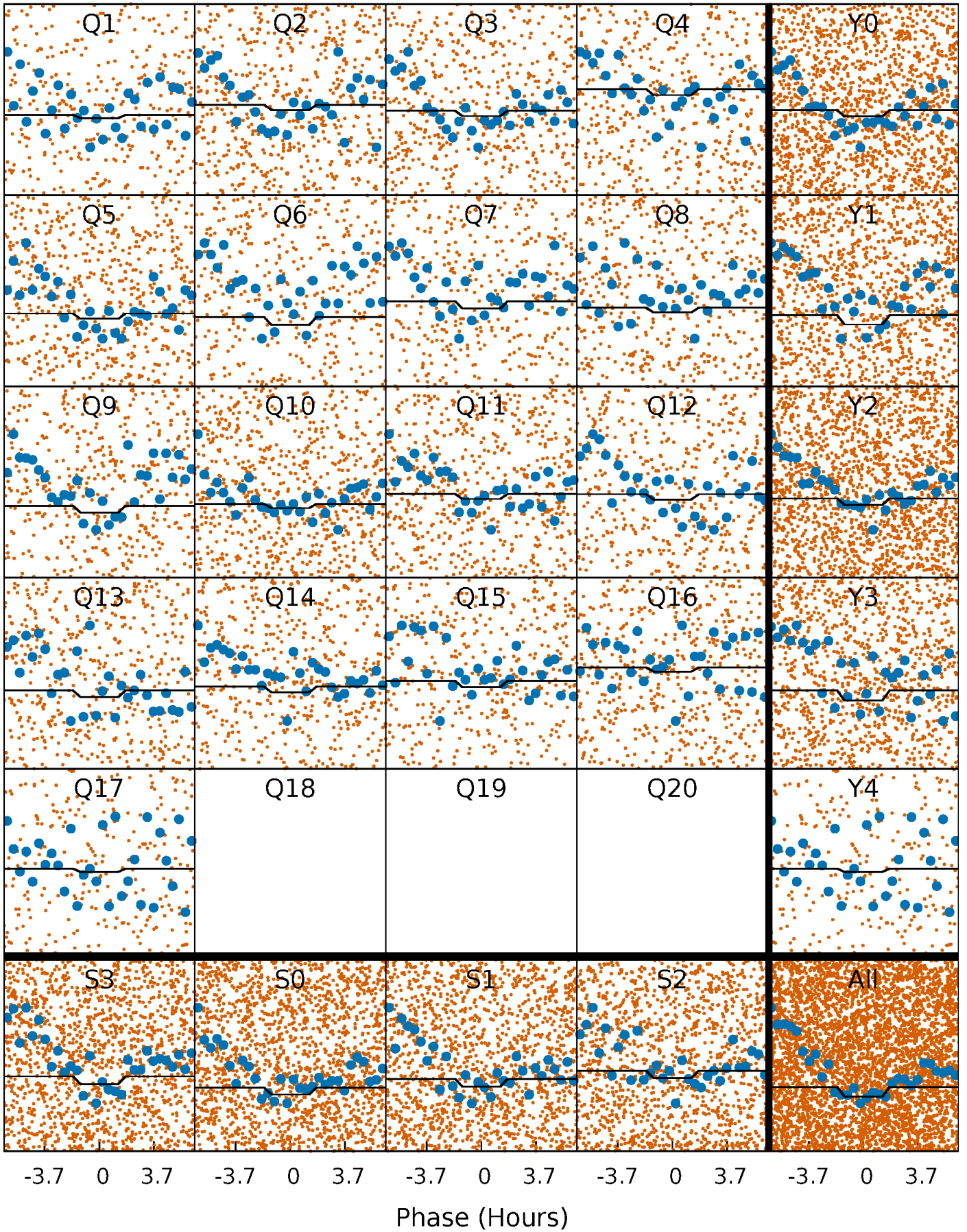
DV Quarter-Phased Transit Curves

TCE 008956850-01 P= 1.562242 Days $T_0=132.993276$ (BKJD)



Alt. Detrend Quarter-Phased Transit Curves

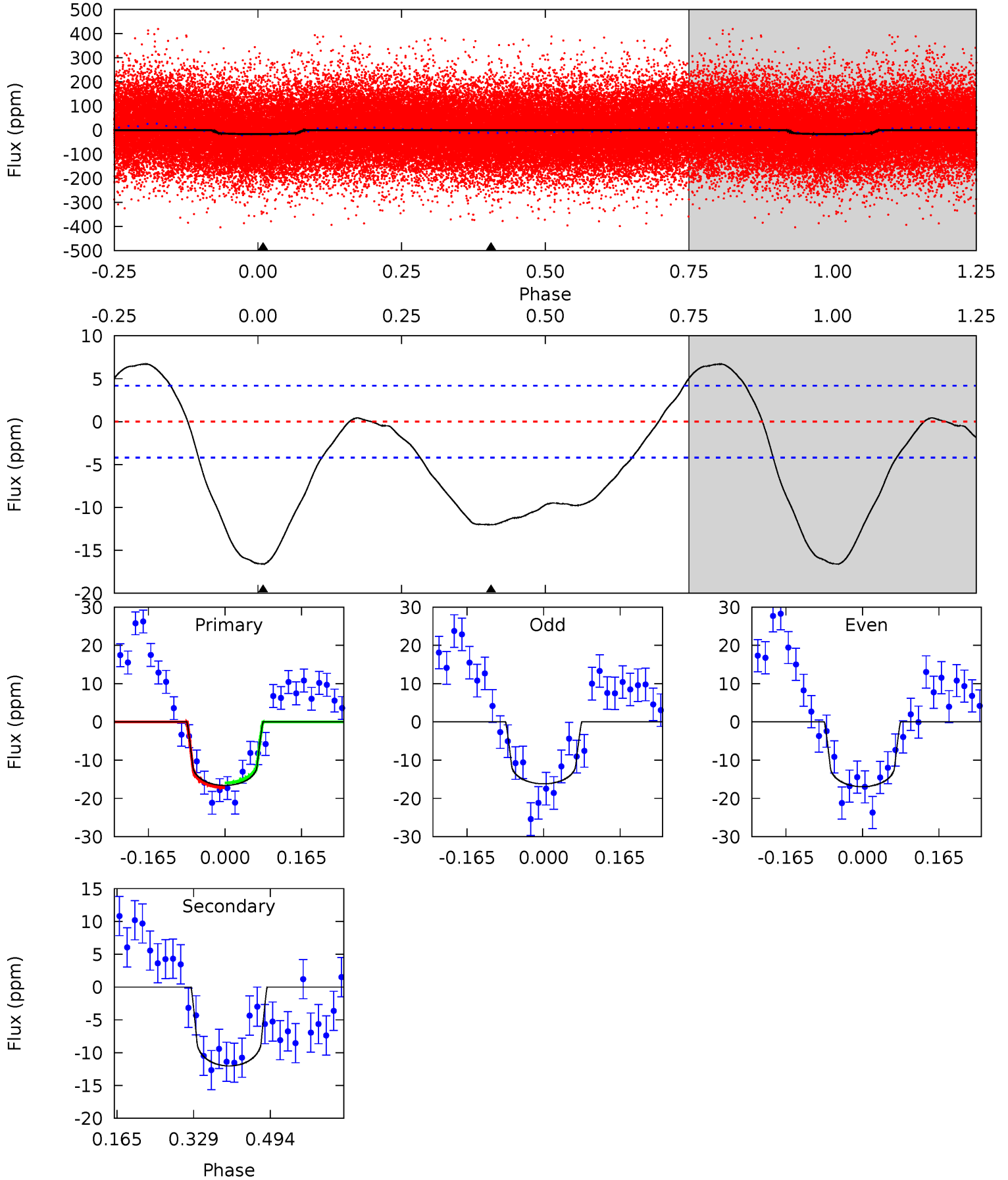
TCE 008956850-01 P= 1.562161 Days $T_0=133.034310$ (BKJD)



DV Model-Shift Uniqueness Test

008956850-01, P = 1.562242 Days, E = 131.431034 Days

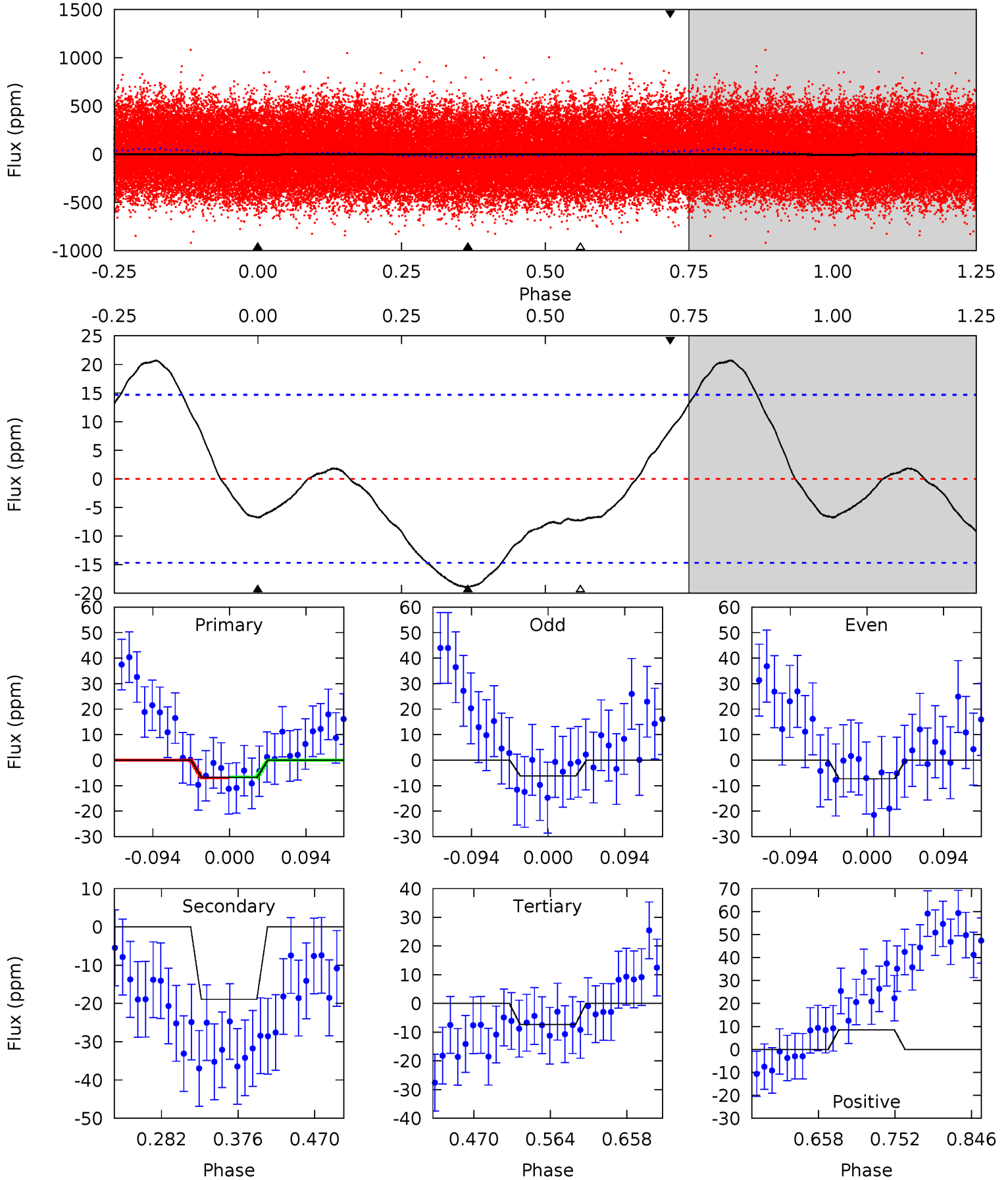
Pri	Sec	Ter	Pos	FA ₁	FA ₂	F _{Red}	Pri-Ter	Pri-Pos	Sec-Ter	Sec-Pos	Odd-Evn	DMM	Shape	TAT
17.7	12.8	0	0	4.46	1.39	5.34	17.7	17.7	12.8	12.8	0.40	1.06	0.29	0.64



Alt Model-Shift Uniqueness Test

008956850-01, P = 1.562161 Days, E = 131.472149 Days

Pri	Sec	Ter	Pos	FA ₁	FA ₂	F _{Red}	Pri-Ter	Pri-Pos	Sec-Ter	Sec-Pos	Odd-Evn	DMM	Shape	TAT
2.11	5.90	2.27	2.67	4.58	1.67	3.09	-0.17	-0.56	3.63	3.23	0.17	0.72	0.52	0.05



Stellar Parameters For KIC 008956850

	$T_{\text{eff}}(K)$	$\log(g)$	[Fe/H]	R (R_{\odot})	$M(M_{\odot})$	p_{\star} ($\text{g}\cdot\text{cm}^{-3}$)
	6851^{+187}_{-208}	$3.020^{+0.586}_{-0.103}$	$0.070^{+0.200}_{-0.450}$	$8.767^{+1.658}_{-5.307}$	$2.935^{+0.257}_{-1.094}$	$0.006^{+0.049}_{-0.002}$
	+3%/-3%	+19%/-3%	+286%/-643%	+19%/-61%	+9%/-37%	+795%/-31%
Source	PHO1	FLK73	KIC0	DSEP		

KIC = Kepler Input Catalog; PHO = Photometry; SPE = Spectroscopy; AST = Asteroseismology
 TRA = Transits; DESP = Dartmouth Models; MULT = Multiple Models

Secondary Eclipse Parameters for KIC 008956850-01 / KOI

Detrend	Depth (ppm)	R_p (R_{\oplus})	T_{max} (K)	T_{obs} (K)	A_{obs}
DV	-12 ± 1	$3.49^{+1.48}_{-1.21}$	6206^{+482}_{-897}	5464^{+1404}_{-1311}	$0.767^{+0.922}_{-0.374}$
Alt.	-19 ± 3	$2.11^{+1.18}_{-1.06}$	6260^{+461}_{-969}	9118^{+6142}_{-2207}	$3.217^{+9.272}_{-1.930}$

T_{max} = Theoretical Maximum Planetary Temperature

T_{obs} = Observed Planetary Temperature (Assuming $A=0.3$)

A_{obs} = Observed Albedo (Assuming $T=0$)

If a secondary eclipse is present, the system is likely an EB if $T_{obs} \gg T_{max}$ AND $A_{obs} \gg 1.0$

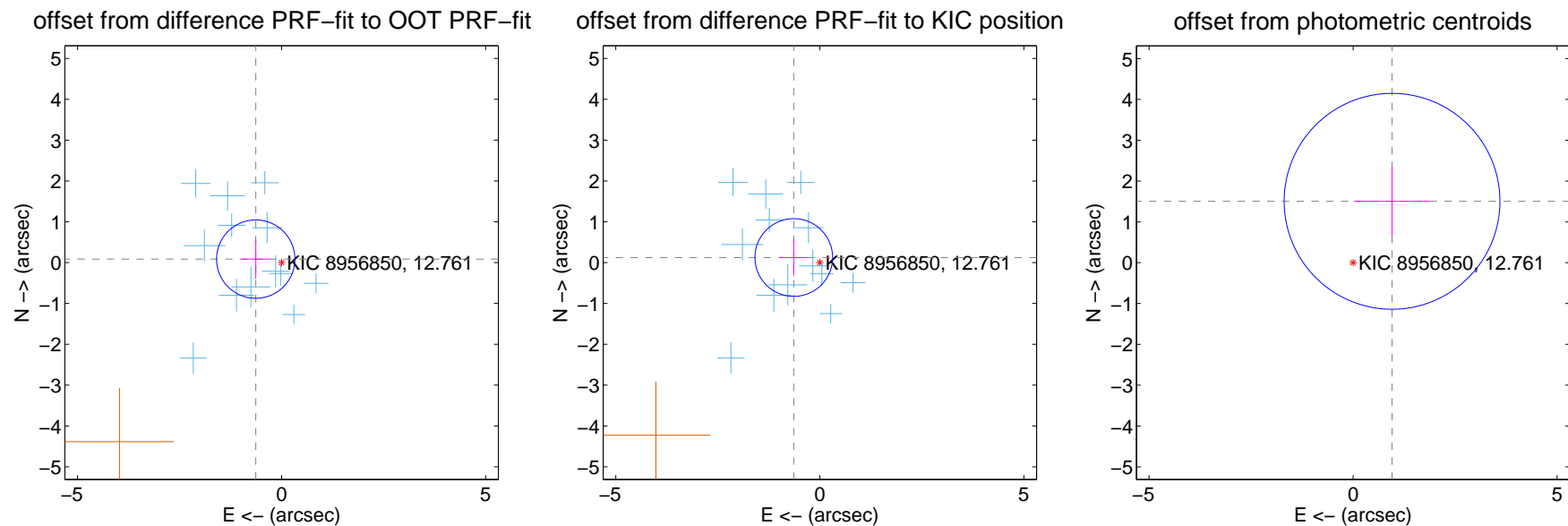
DV Centroid Data

Supplemental centroid analysis for 008956850-01. Kepler magnitude: 12.76. Transit SNR 12.60

There are 13 quarters with good PRF difference image offsets

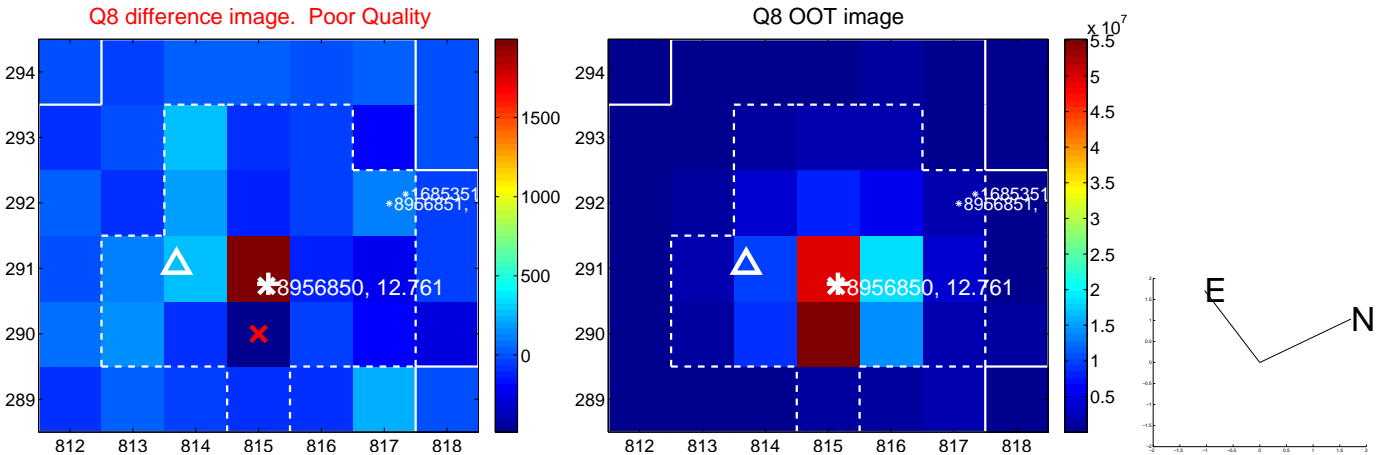
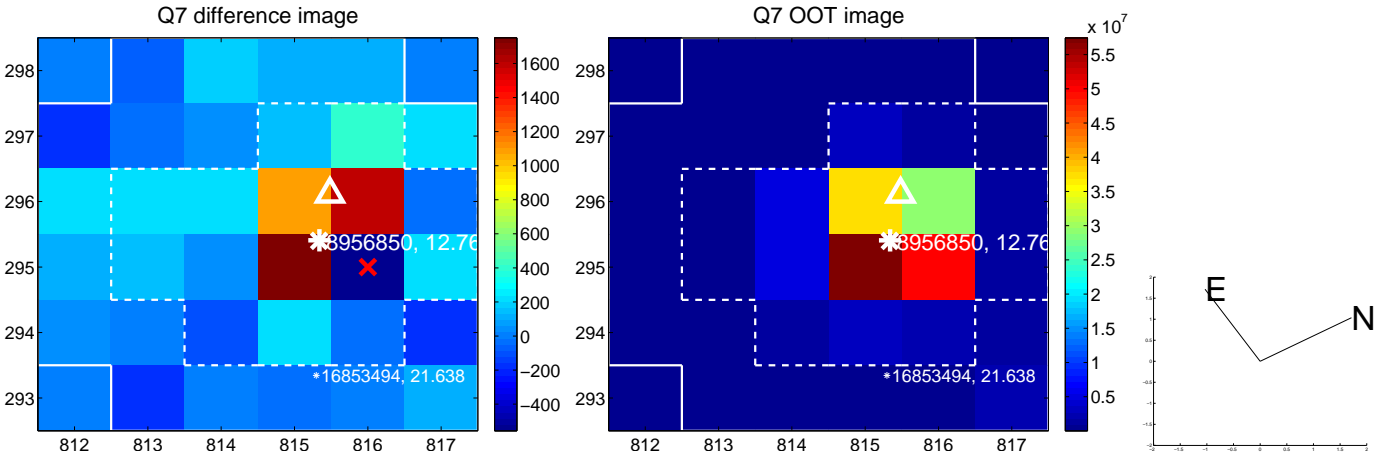
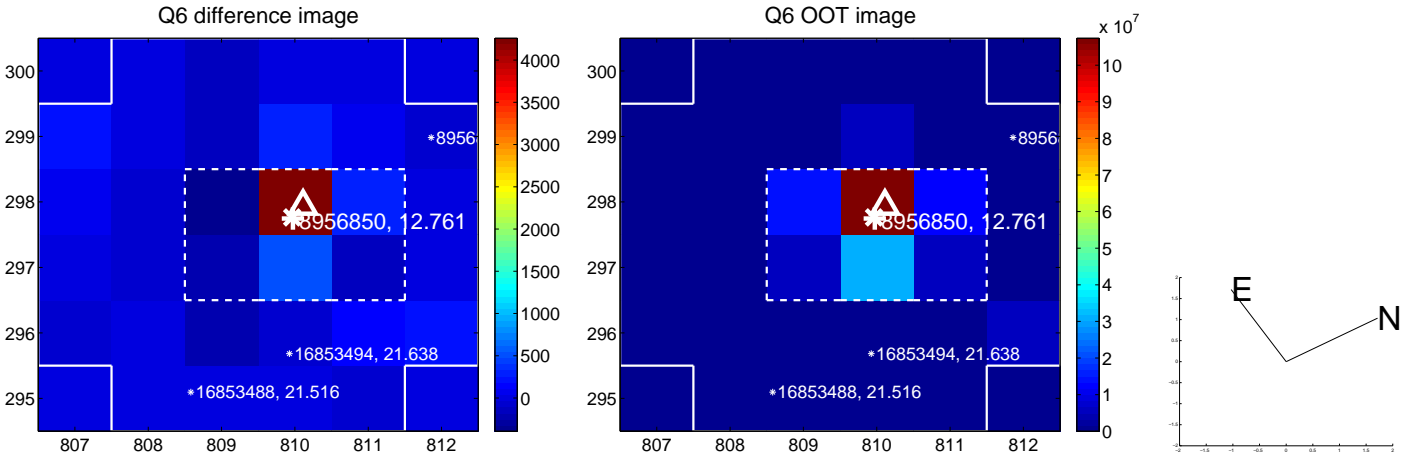
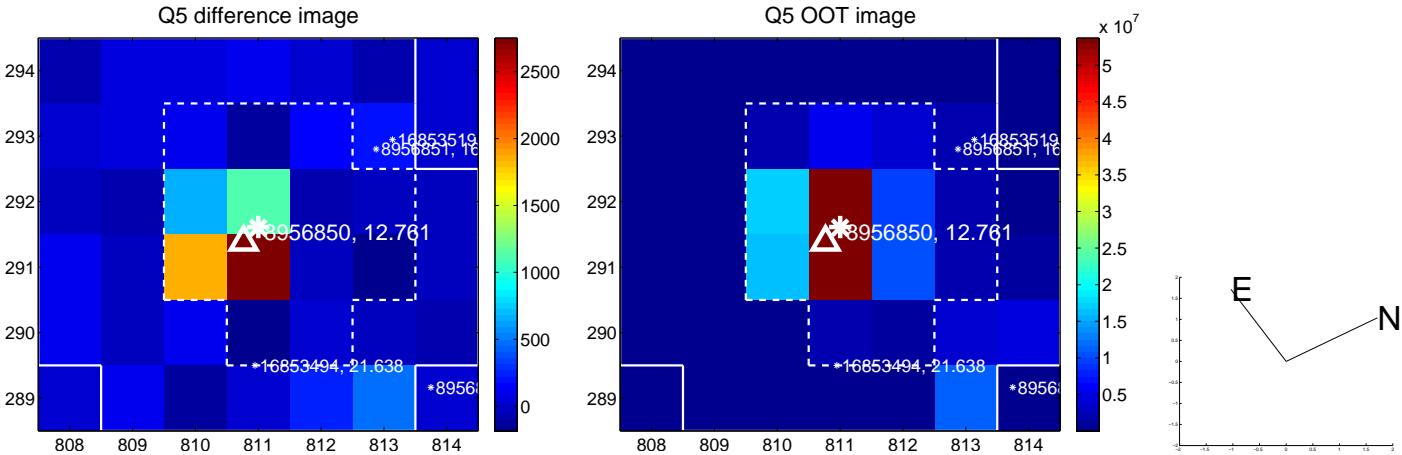
The direct PRF centroid is offset from the target star catalog position by about 0.02 arcsec

	Distance in arcsec	Distance / σ	Δ RA	Δ Dec
PRF-fit source offset from OOT	0.639 ± 0.320	2.00	0.633 ± 0.346	0.086 ± 0.480
PRF-fit source offset from KIC position	0.651 ± 0.317	2.05	0.639 ± 0.348	0.125 ± 0.444
photometric centroid source offset	1.78 ± 0.88	2.02	-0.95 ± 0.93	1.50 ± 0.86

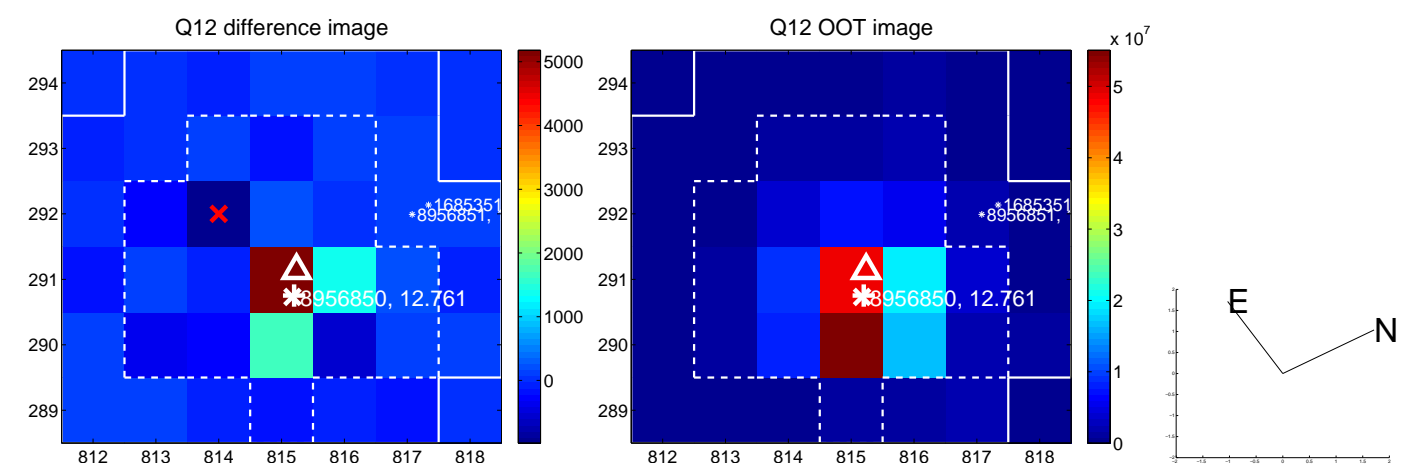
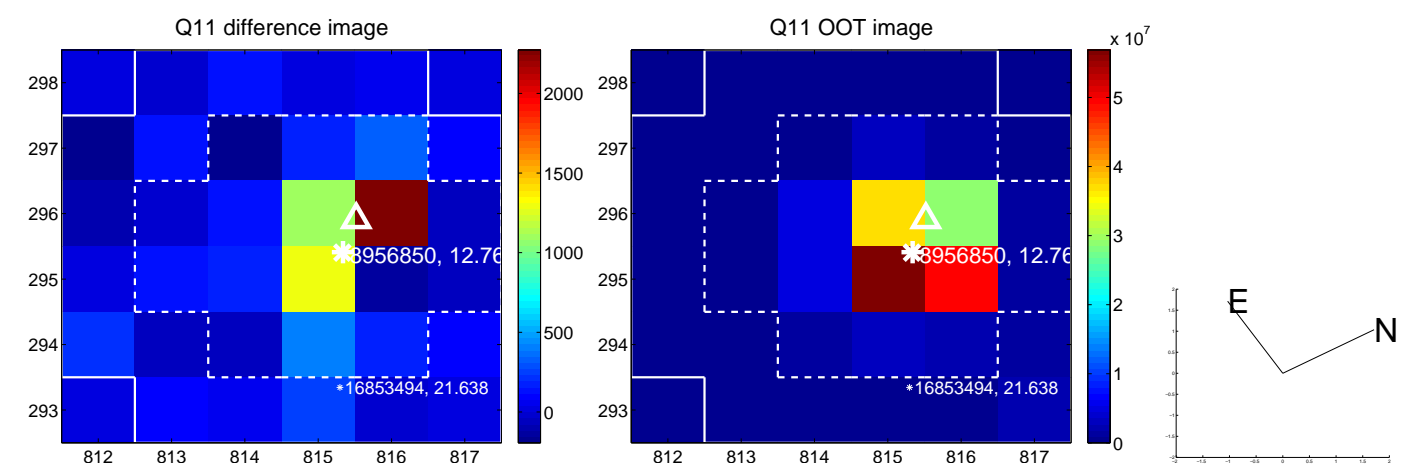
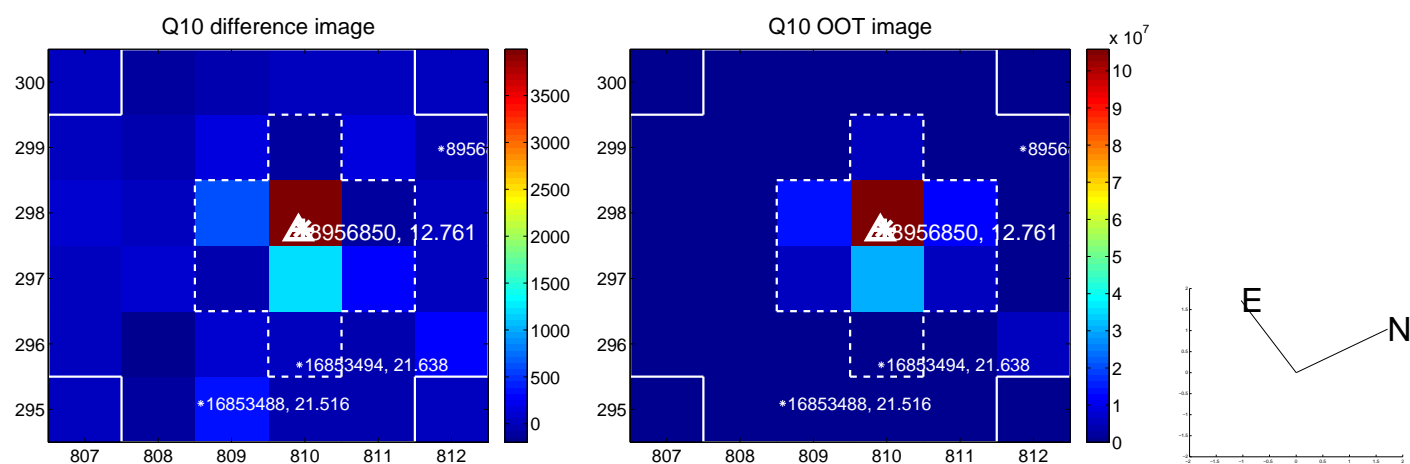
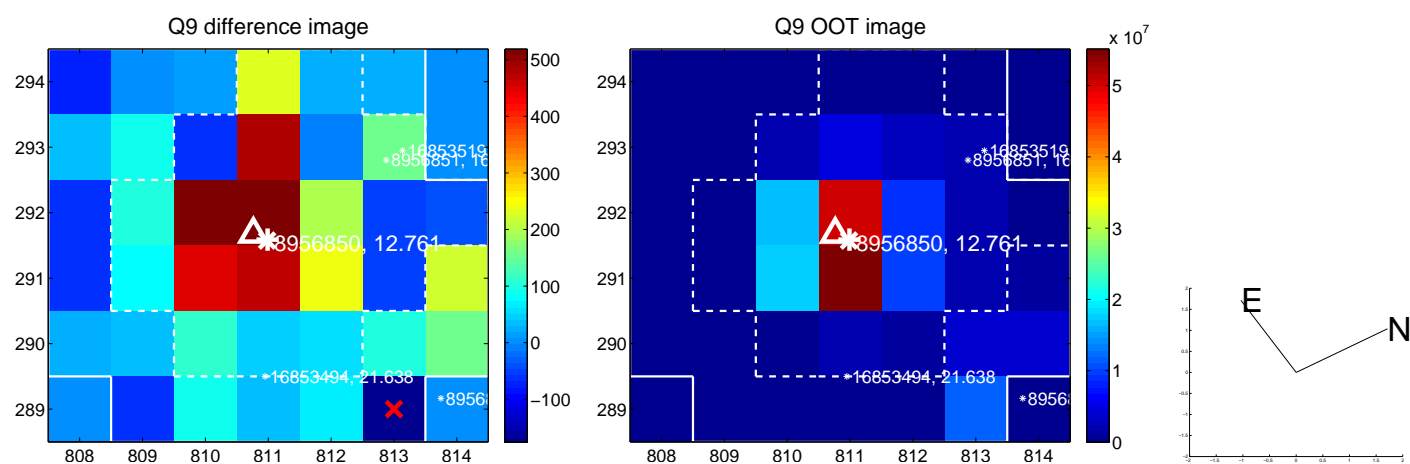


Centroid source offsets from the target star reconstructed from PRF and photometric centroids. **Sky blue crosses: good quarterly centroid offsets; Vermillion crosses: bad quarterly centroid offsets**; magenta cross: average over quarters. Length of the crosses: one- σ uncertainty. Blue circle: three- σ . Red *: target star. Blue *: Other stars. Text next to a star gives its KIC ID and kepmag. KIC IDs > 15,000,000 are from the UKIRT catalog.

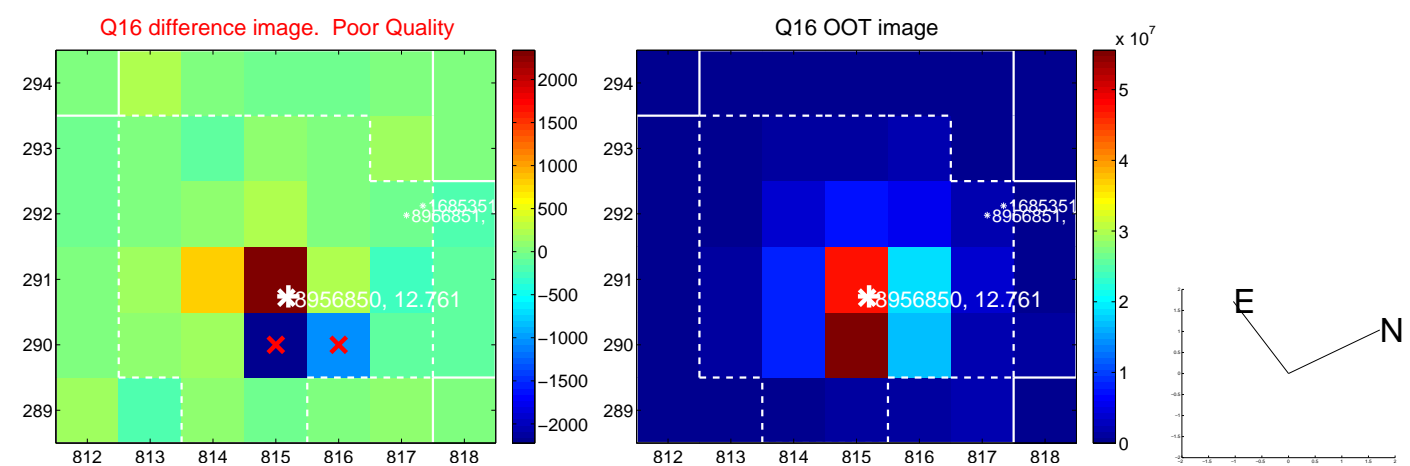
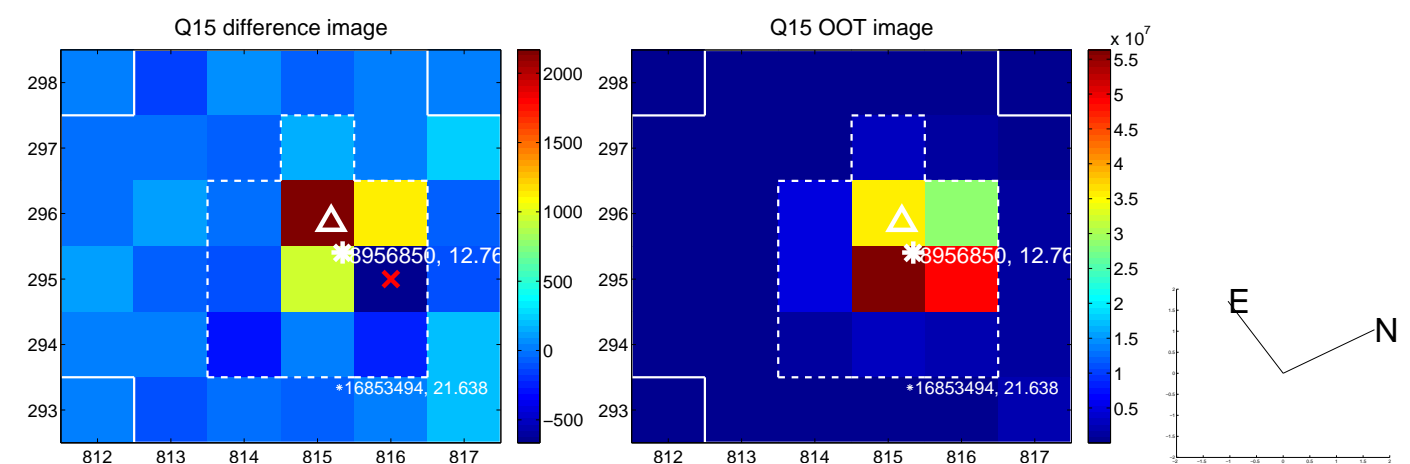
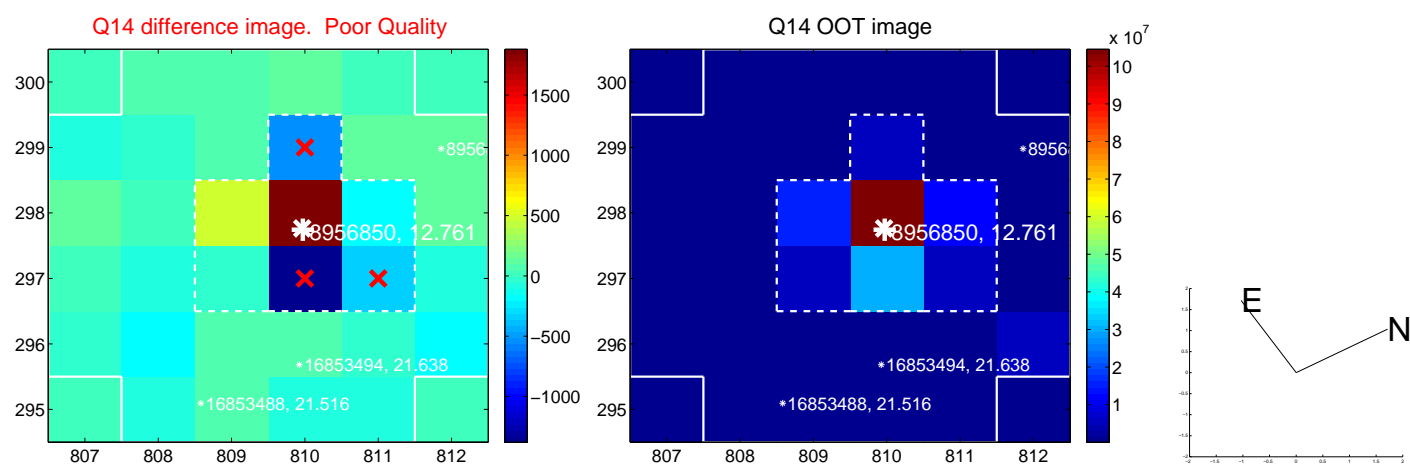
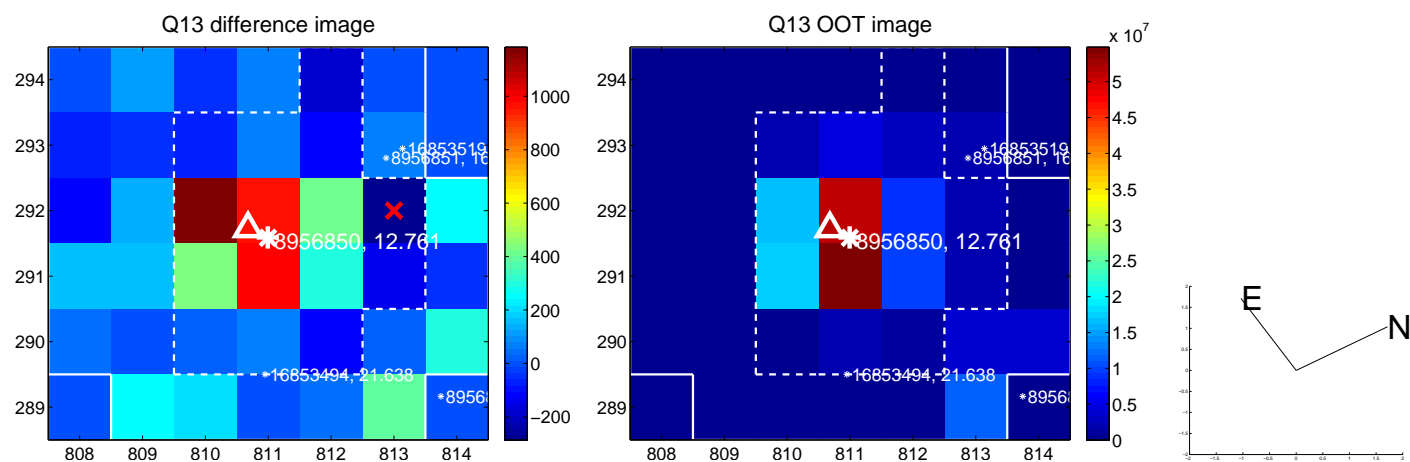
white \times : KIC target position; +: OOT centroid; \triangle : difference centroid. red \times : large negative pixel value.



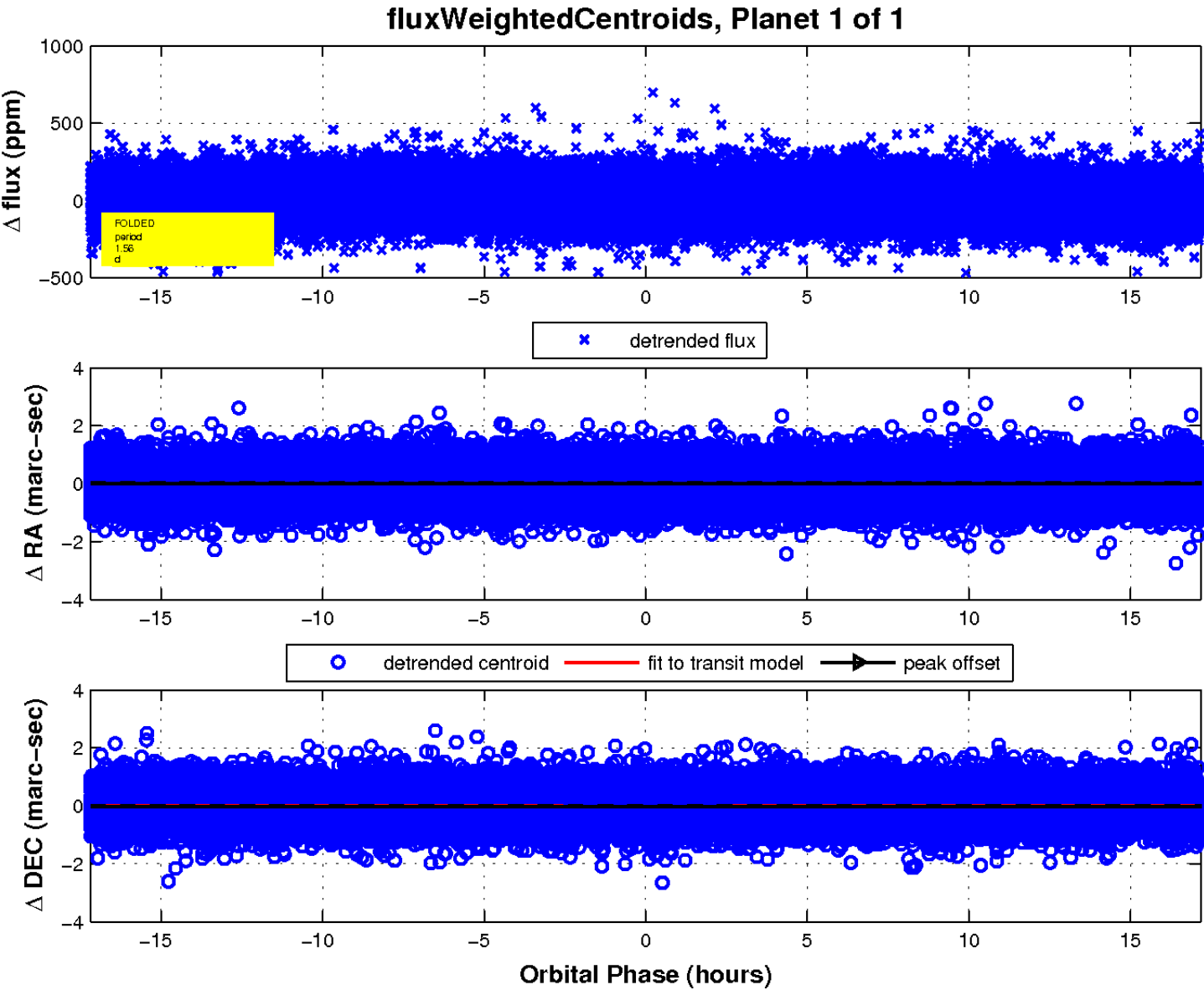
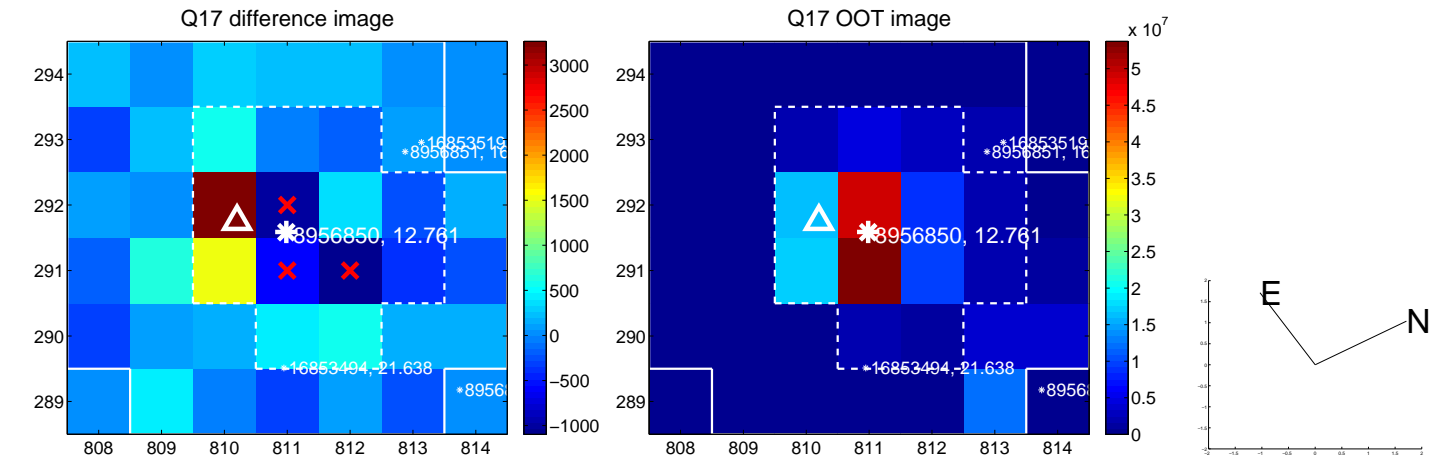
white \times : KIC target position; $+$: OOT centroid; \triangle : difference centroid. red \times : large negative pixel value.



white \times : KIC target position; $+$: OOT centroid; \triangle : difference centroid. red \times : large negative pixel value.



white \times : KIC target position; $+$: OOT centroid; \triangle : difference centroid. red \times : large negative pixel value.



UKIRT Image

Declination

