

KIC 008952815

Q1-17 DR25 TCE Parameters

TCE	Run Type	KOI?	Period (Days)	Epoch (BKJD)	Depth (ppm)	Duration (Hours)	MES	SNR	R_{\star} (R_{\odot})	T_{\star} (K)	R_p (R_{\oplus})	S_p (S_{\oplus})
008952815-01	OBS	No	374.671332	133.655018	1855.5	48.365	10.3	14.6	0.88	5650	4.61	0.68

Robovetter Results

TCE	Run Type	Disp	Score	N	S	C	E	Comments
008952815-01	OBS	FP	0.00	1	0	0	0	INDIV_TRANS_MARSHALL_SKYE—LPP_DV—INCONSISTENT_TRANS—CENT_FEW_DIFFS

Notes: OBS = Observed. INJ = Injected. INV = Inverted. SCR = Scrambled.

N = Not Transit-Like. S = Stellar Eclipse. C = Centroid Offset. E = Ephemeris Match.

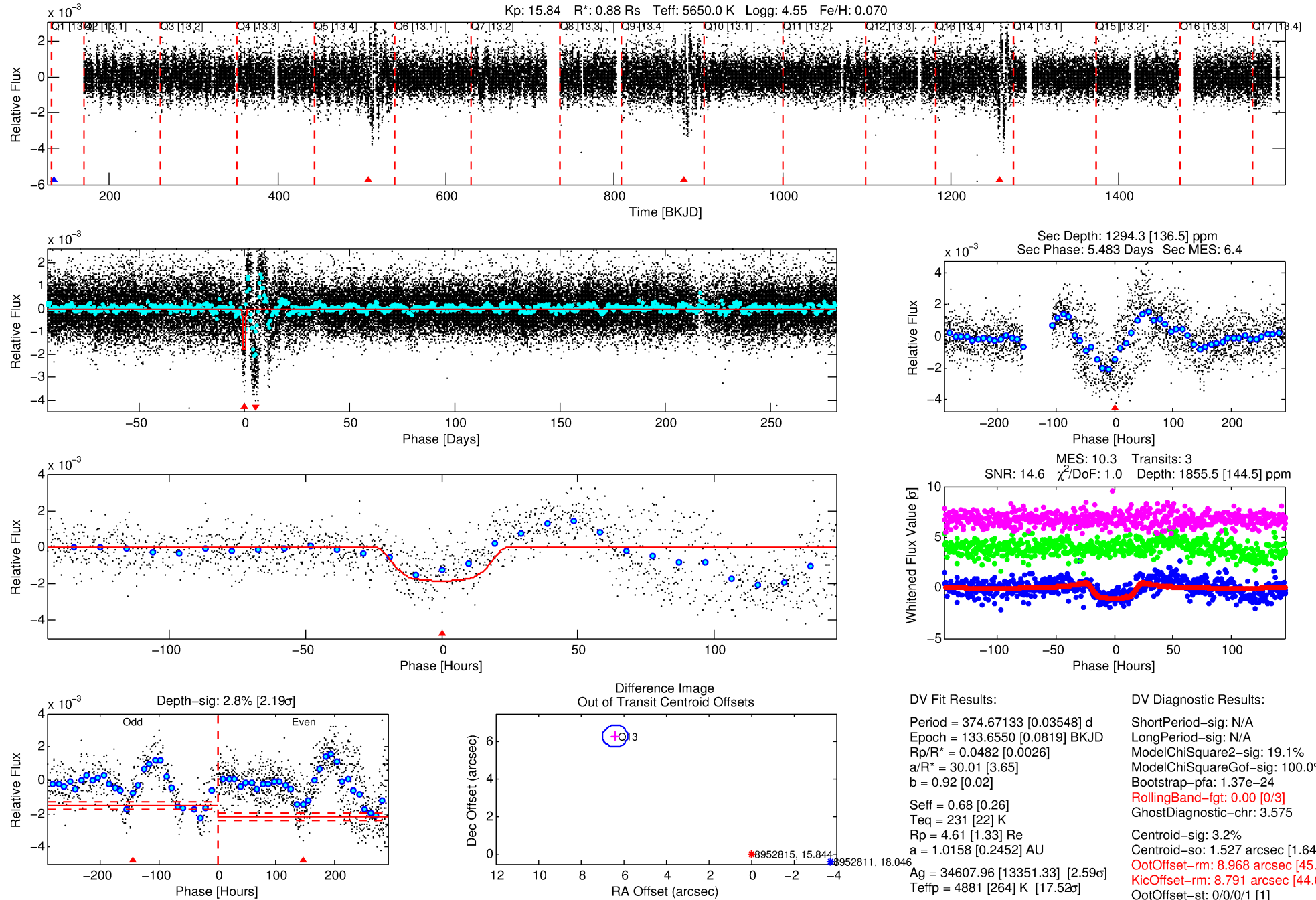
See http://exoplanetarchive.ipac.caltech.edu/docs/API_kepcandidate_columns.html#proj_disp_col for comment definitions.

Ephemeris Match Information For 008952815-01

No Significant Match Found

DV One-Page Summary

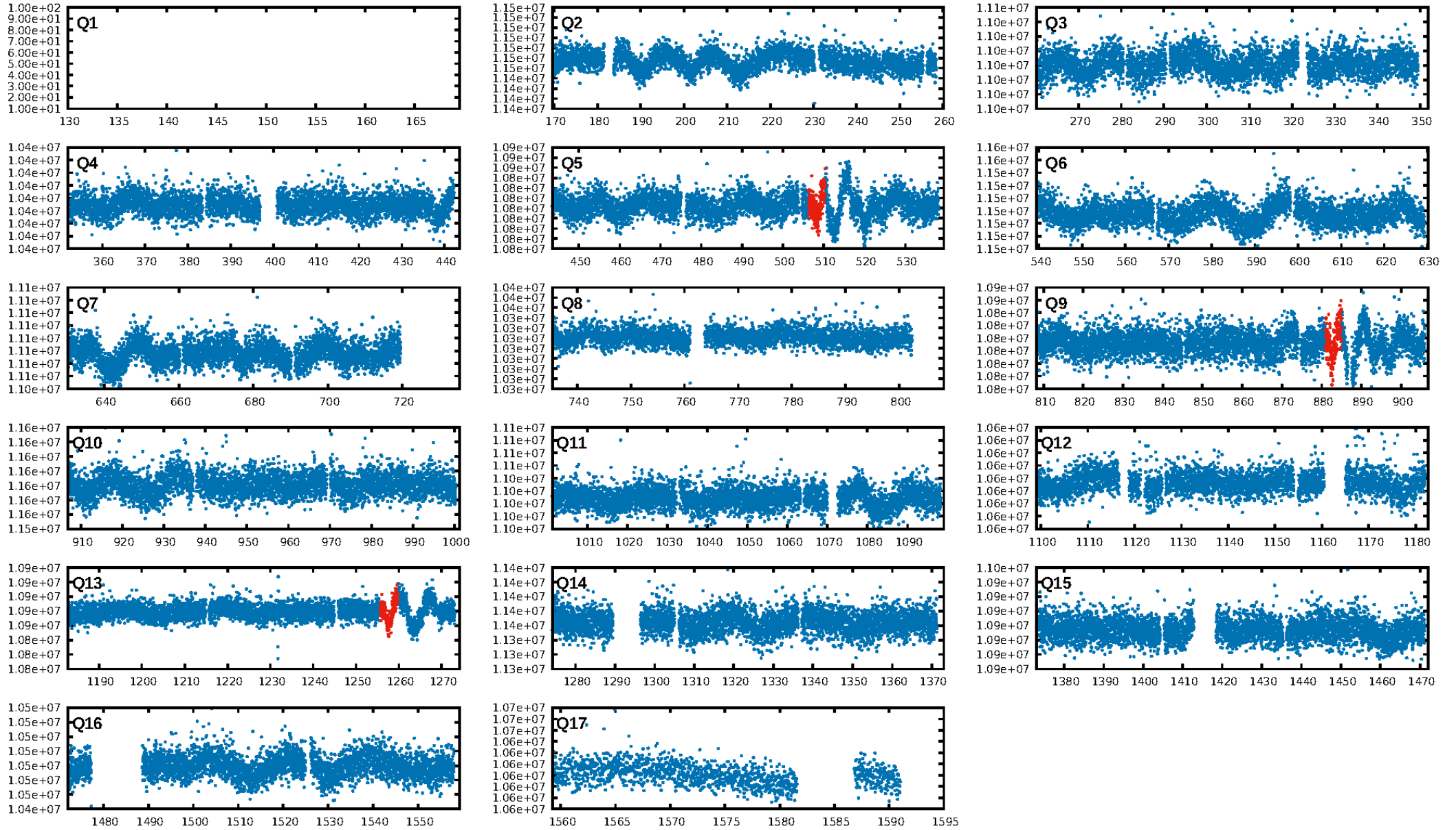
KIC: 8952815 Candidate: 1 of 1 Period: 374.671 d



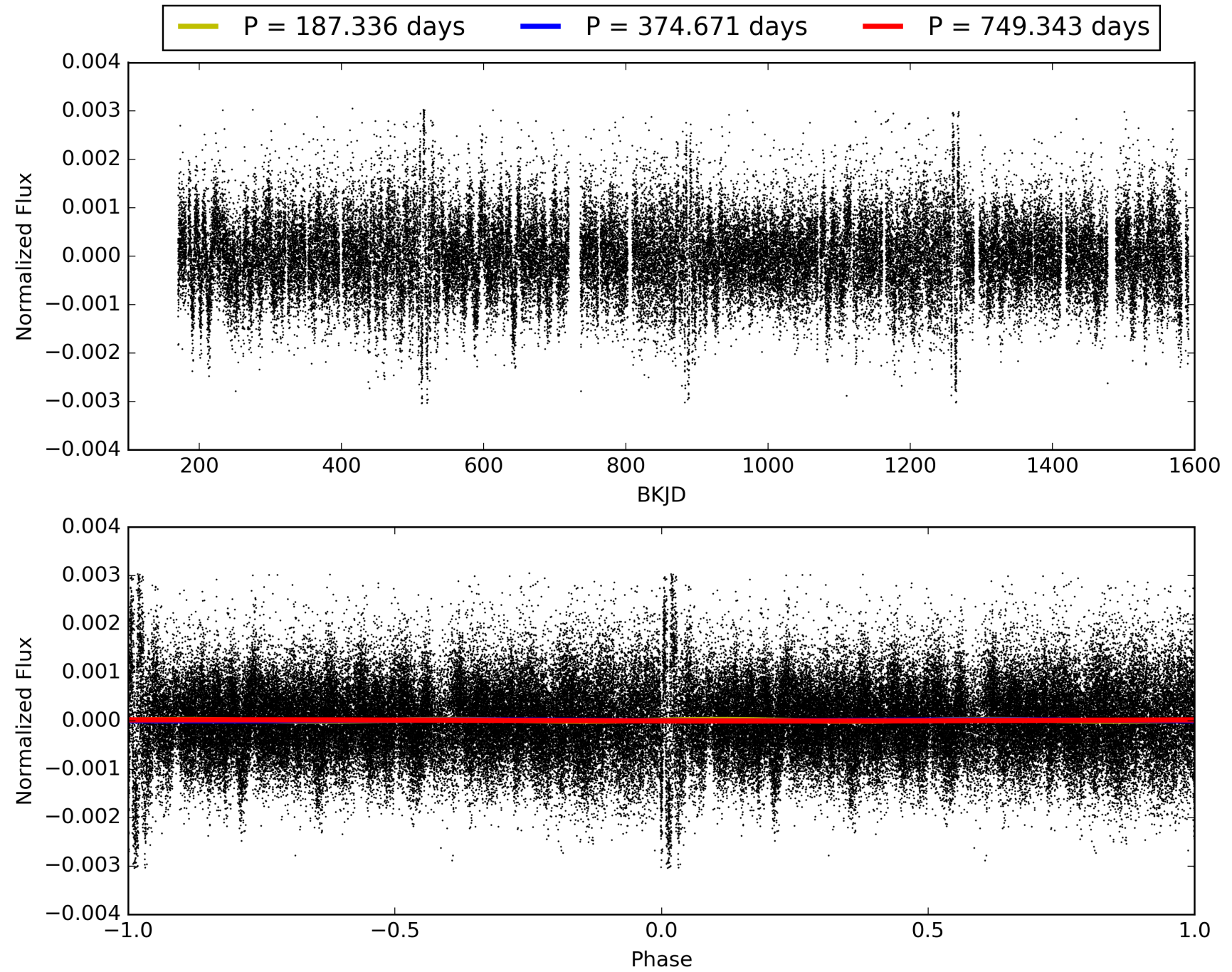
Software Revision: svn+ssh://murzim/repo/soc/tags/release/9.3.42@60958 -- Date Generated: 30-Jan-2016 13:39:01 Z

This Data Validation Report Summary was produced in the Kepler Science Operations Center Pipeline at NASA Ames Research Center

TCE 008952815-01, PDC Light Curves

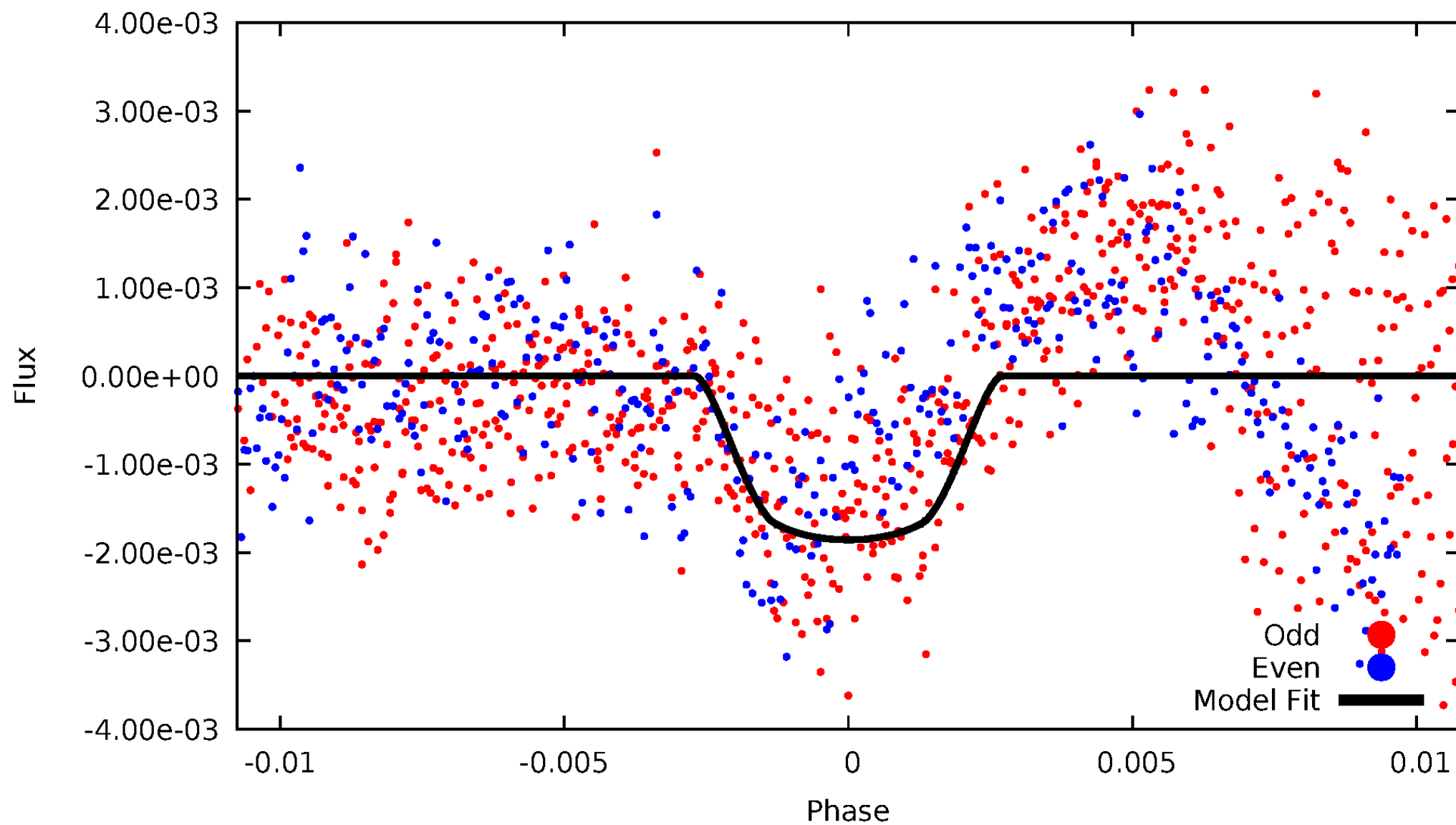


TCE 008952815-01



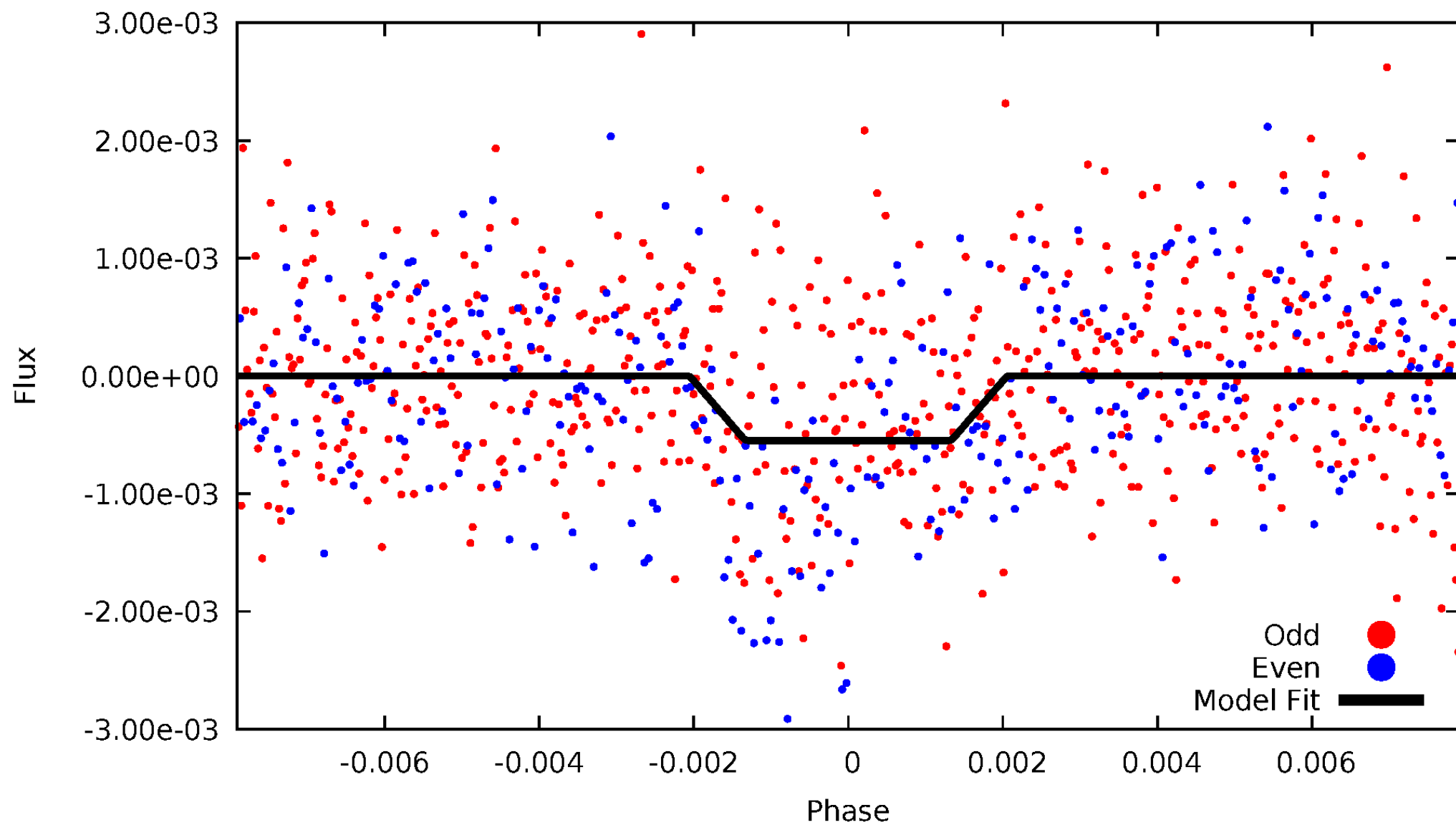
DV Odd/Even

TCE 008952815-01



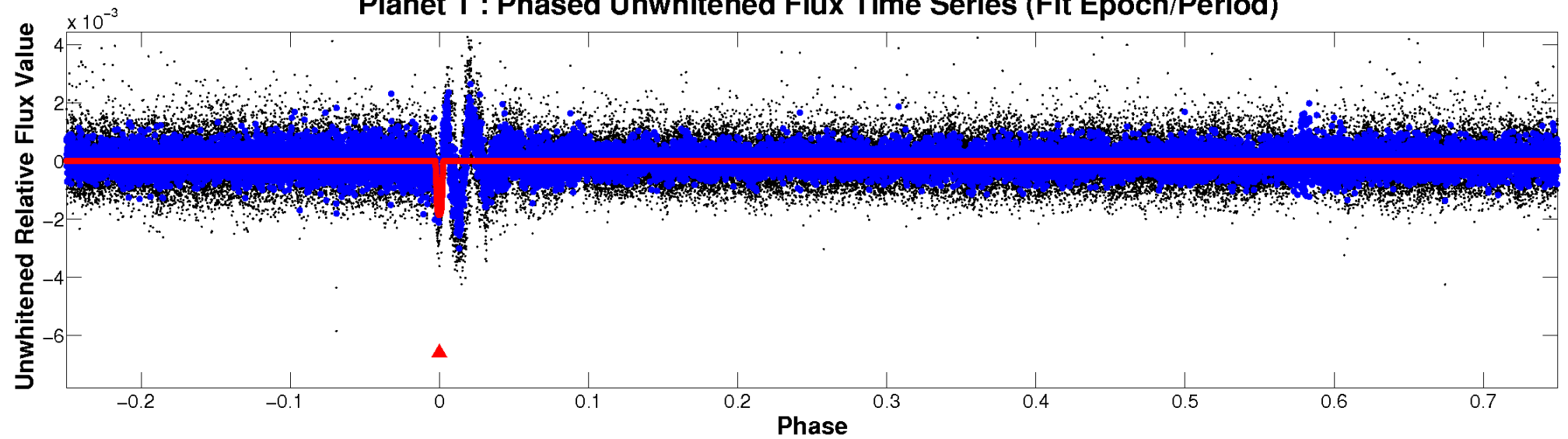
ALT Odd/Even

TCE 008952815-01

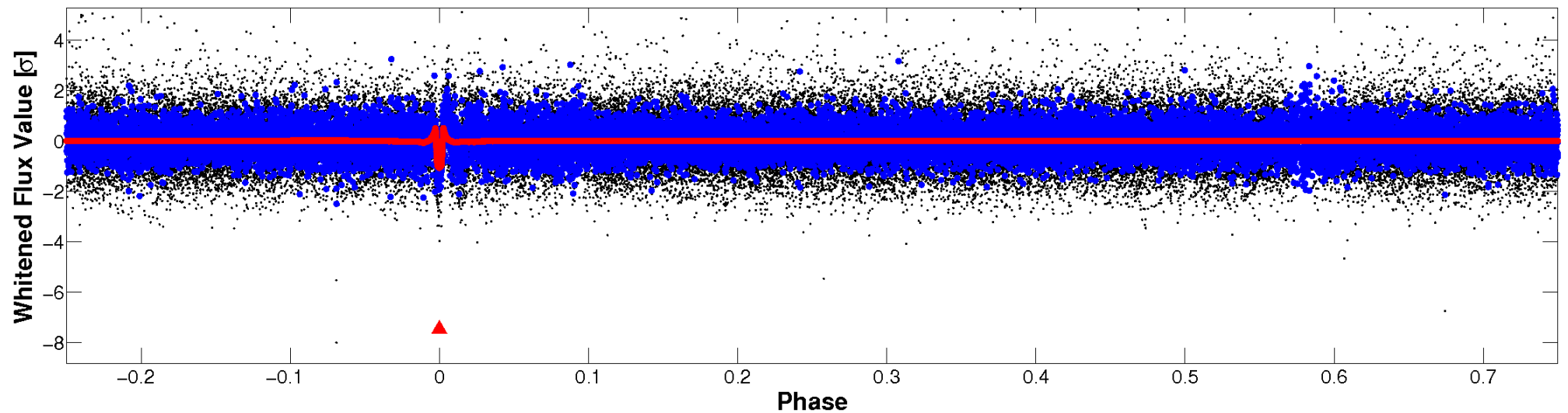


Non-Whitened Vs. Whitened Light Curve

Planet 1 : Phased Unwhitened Flux Time Series (Fit Epoch/Period)

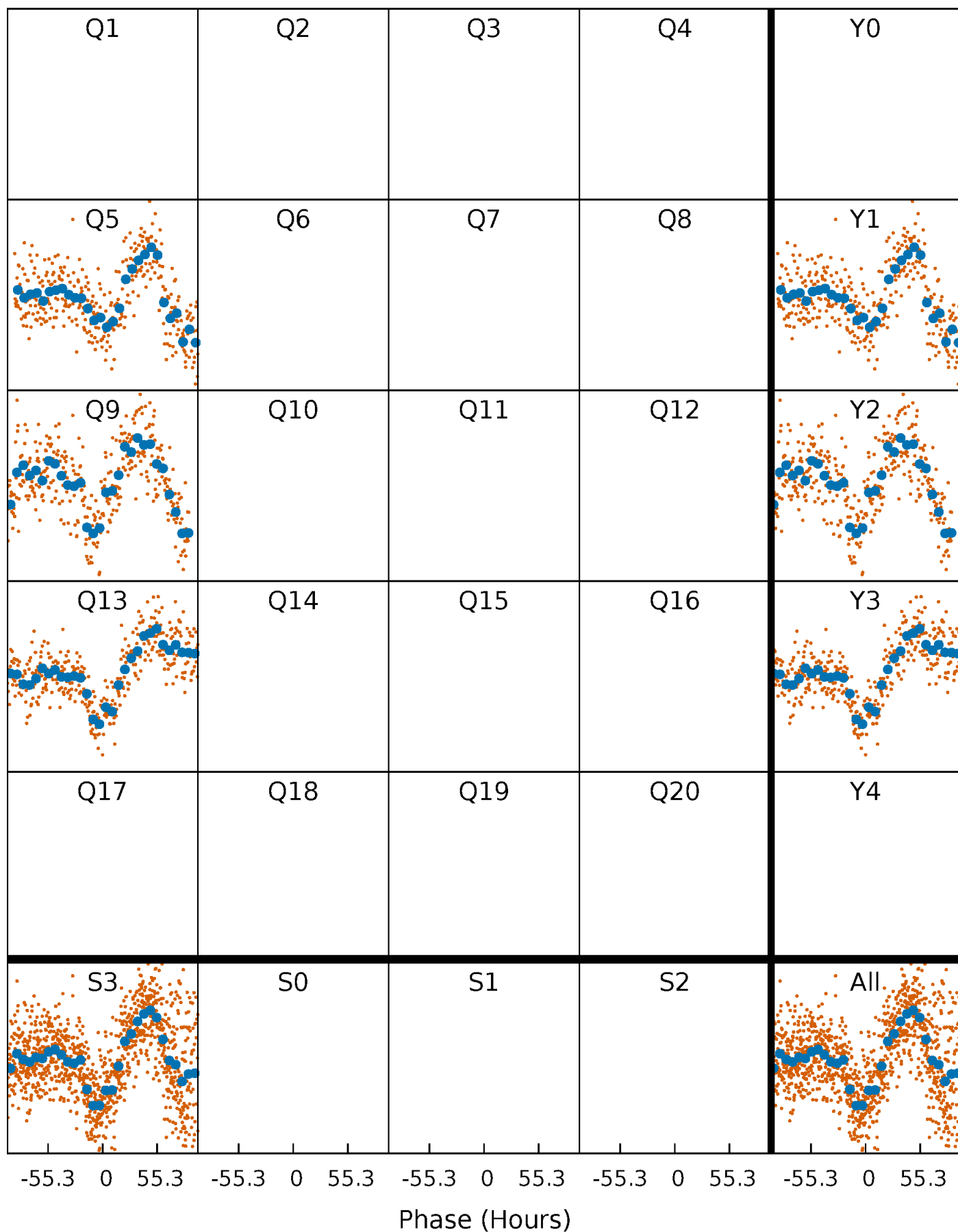


Planet 1 : Phased Whitened Flux Time Series (Fit Epoch/Period)



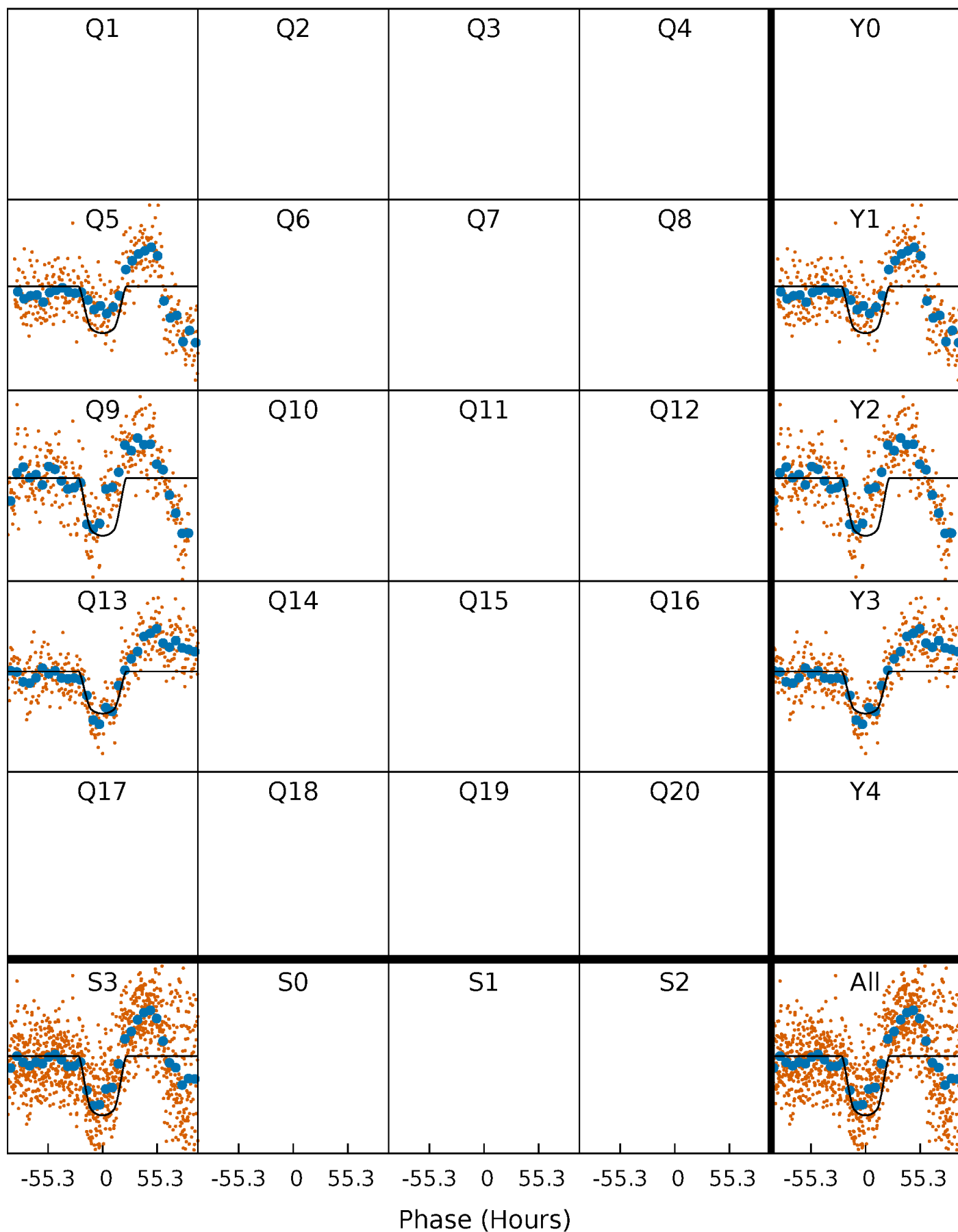
PDC Quarter-Phased Transit Curves

TCE 008952815-01 P=374.671332 Days $T_0=133.655018$ (BKJD)



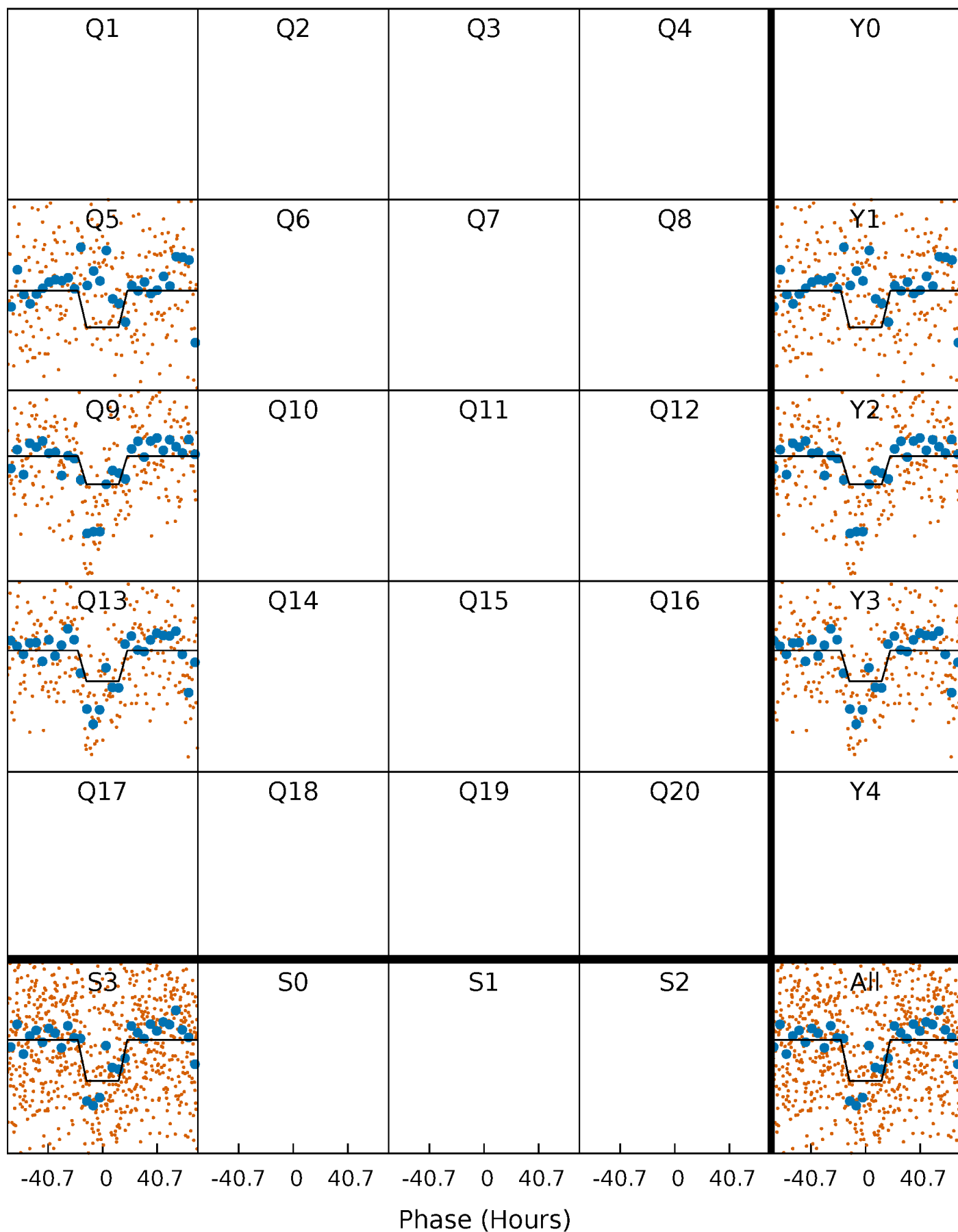
DV Quarter-Phased Transit Curves

TCE 008952815-01 P=374.671332 Days $T_0=133.655018$ (BKJD)



Alt. Detrend Quarter-Phased Transit Curves

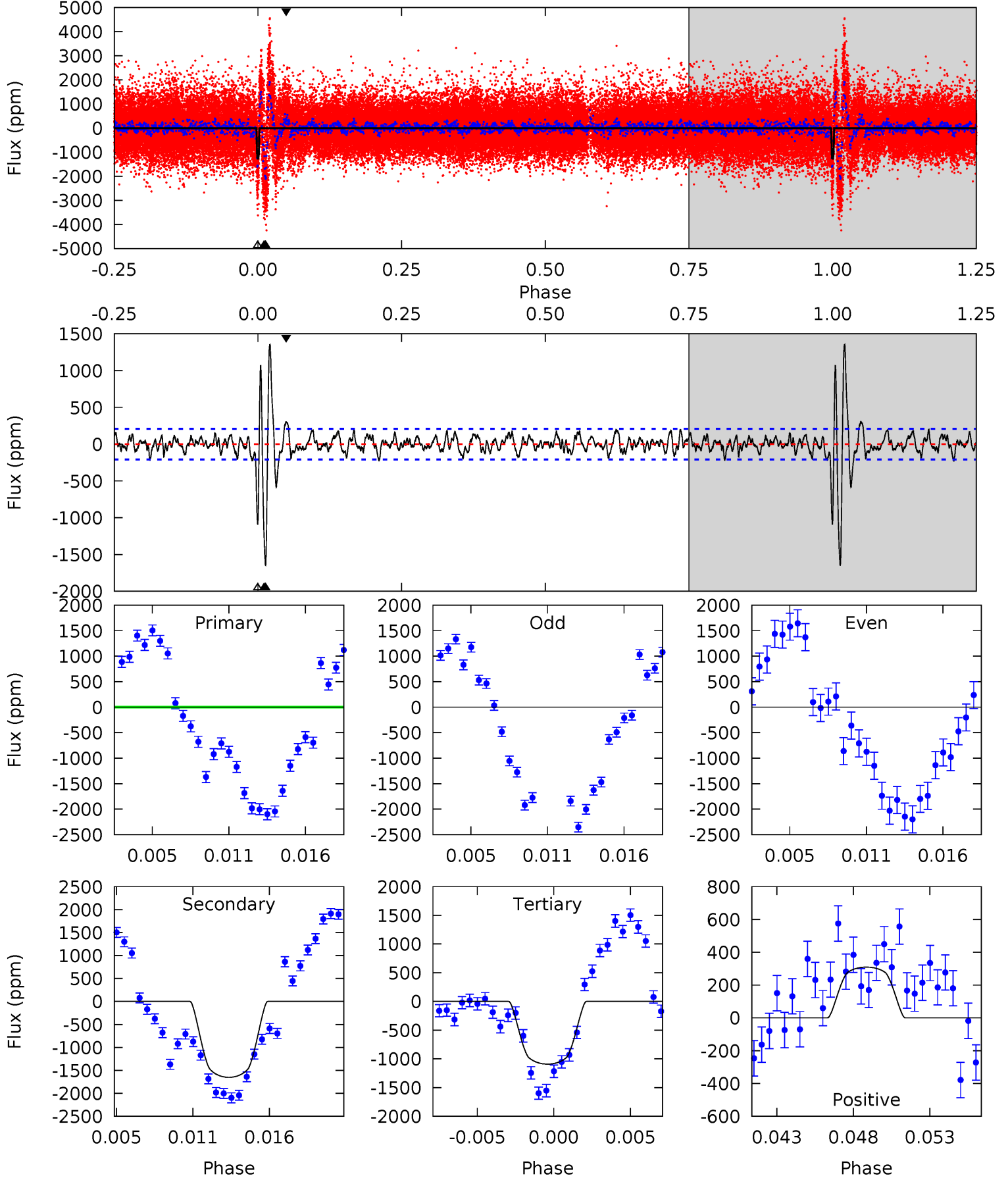
TCE 008952815-01 P=374.819602 Days $T_0=133.246155$ (BKJD)



DV Model-Shift Uniqueness Test

008952815-01, P = 374.671332 Days, E = 133.655018 Days

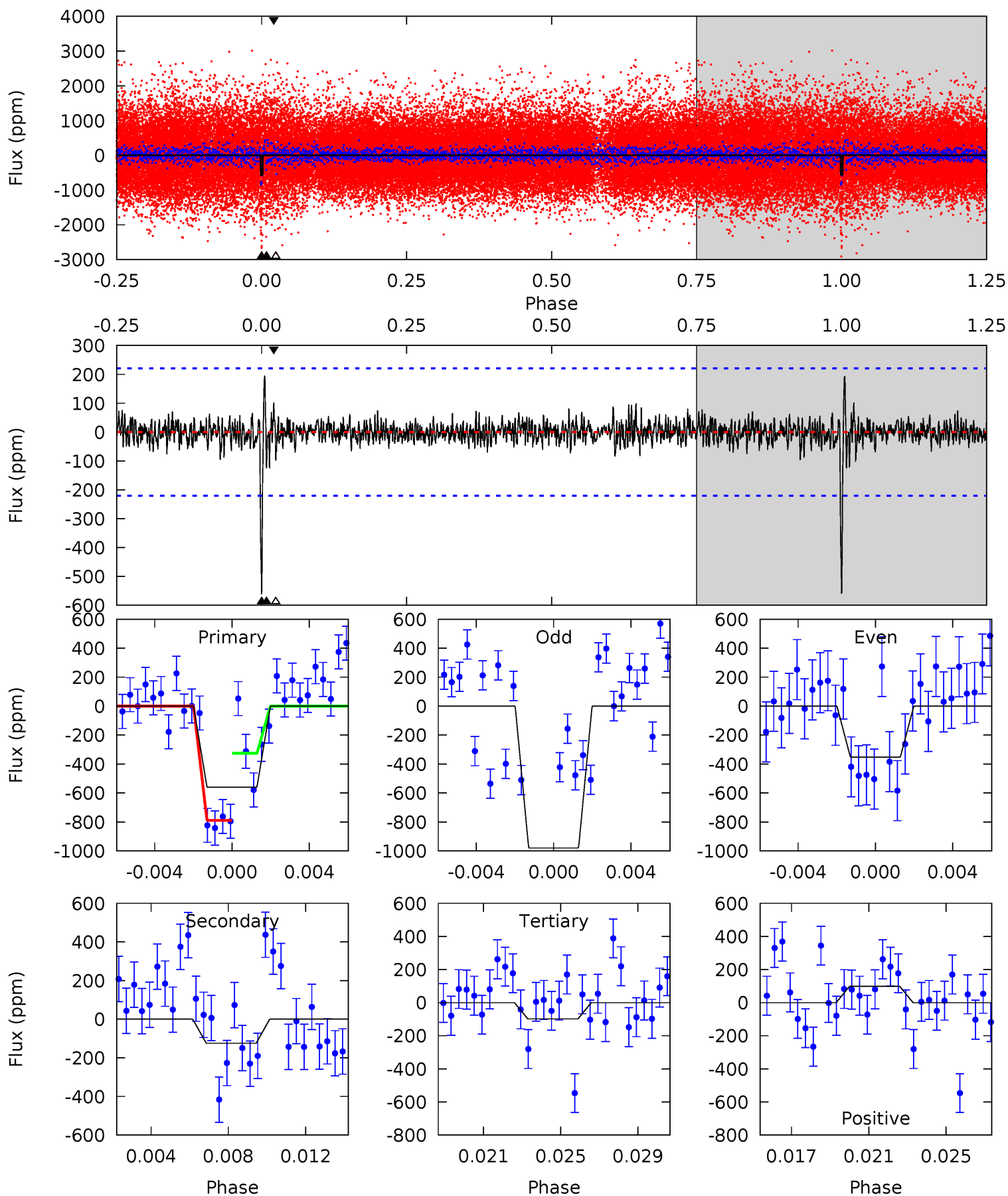
Pri	Sec	Ter	Pos	FA ₁	FA ₂	F _{Red}	Pri-Ter	Pri-Pos	Sec-Ter	Sec-Pos	Odd-Evn	DMM	Shape	TAT
31.5	41.1	27.1	7.69	5.15	2.79	3.50	4.36	23.8	13.9	33.4	5.09	1.30	0.45	8.23



Alt Model-Shift Uniqueness Test

008952815-01, P = 374.819602 Days, E = 133.246155 Days

Pri	Sec	Ter	Pos	FA ₁	FA ₂	F _{Red}	Pri-Ter	Pri-Pos	Sec-Ter	Sec-Pos	Odd-Evn	DMM	Shape	TAT
13.2	2.94	2.33	2.34	5.19	2.87	0.64	10.9	10.9	0.61	0.60	7.00	0.65	0.26	5.42



Stellar Parameters For KIC 008952815

	$T_{\text{eff}}(K)$	$\log(g)$	[Fe/H]	$R (R_{\odot})$	$M(M_{\odot})$	$p_{\star} (\text{g}\cdot\text{cm}^{-3})$
	5650^{+200}_{-220}	$4.551^{+0.035}_{-0.196}$	$0.070^{+0.250}_{-0.300}$	$0.876^{+0.248}_{-0.078}$	$0.993^{+0.100}_{-0.122}$	$2.083^{+0.384}_{-1.021}$
	+4%/-4%	+1%/-4%	+357%/-429%	+28%/-9%	+10%/-12%	+18%/-49%
Source	PHO1	KIC0	KIC0	DSEP		

KIC = Kepler Input Catalog; PHO = Photometry; SPE = Spectroscopy; AST = Asteroseismology
 TRA = Transits; DESP = Dartmouth Models; MULT = Multiple Models

Secondary Eclipse Parameters for KIC 008952815-01 / KOI

Detrend	Depth (ppm)	$R_p (R_{\oplus})$	$T_{max} (K)$	$T_{obs} (K)$	A_{obs}
DV	-1652 ± 40	$4.75^{+0.65}_{-0.42}$	331^{+21}_{-16}	5228^{+242}_{-214}	40588^{+7279}_{-8105}
Alt.	-125 ± 42	$2.34^{+0.38}_{-0.32}$	332^{+23}_{-17}	4163^{+326}_{-373}	12442^{+6392}_{-5033}

T_{max} = Theoretical Maximum Planetary Temperature

T_{obs} = Observed Planetary Temperature (Assuming $A=0.3$)

A_{obs} = Observed Albedo (Assuming $T=0$)

If a secondary eclipse is present, the system is likely an EB if $T_{obs} \gg T_{max}$ AND $A_{obs} \gg 1.0$

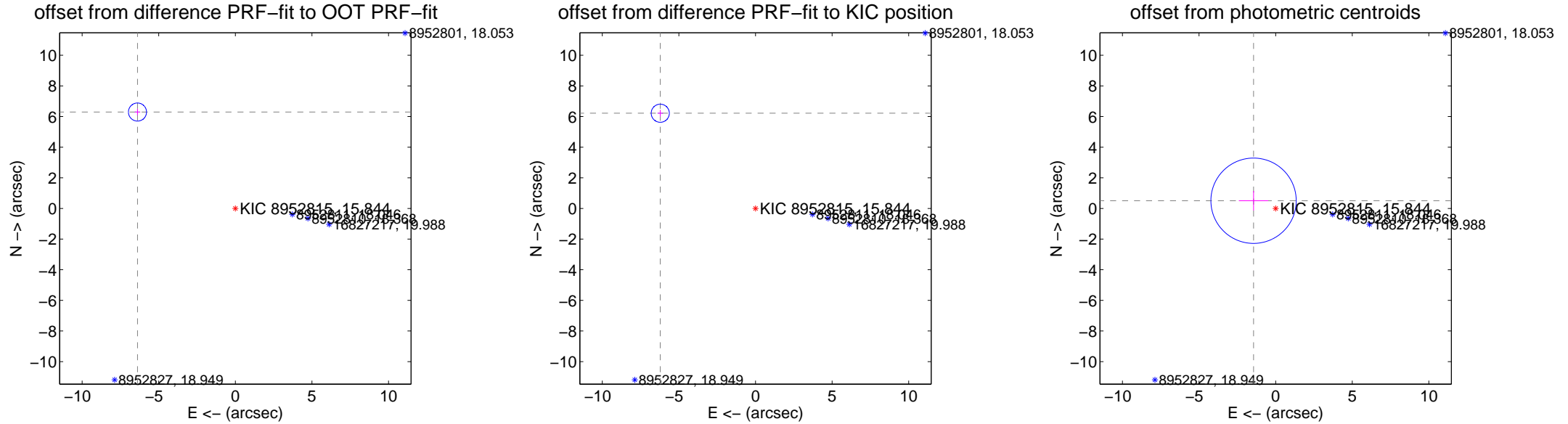
DV Centroid Data

Supplemental centroid analysis for 008952815-01. Kepler magnitude: 15.84. Transit SNR 14.58

There are 1 quarters with good PRF difference image offsets

The direct PRF centroid is offset from the target star catalog position by about 0.19 arcsec

	Distance in arcsec	Distance / σ	Δ RA	Δ Dec
PRF-fit source offset from OOT	8.968 ± 0.197	45.56	6.389 ± 0.179	6.293 ± 0.213
PRF-fit source offset from KIC position	8.791 ± 0.197	44.61	6.217 ± 0.179	6.215 ± 0.213
photometric centroid source offset	1.53 ± 0.93	1.64	1.44 ± 0.96	0.50 ± 0.64

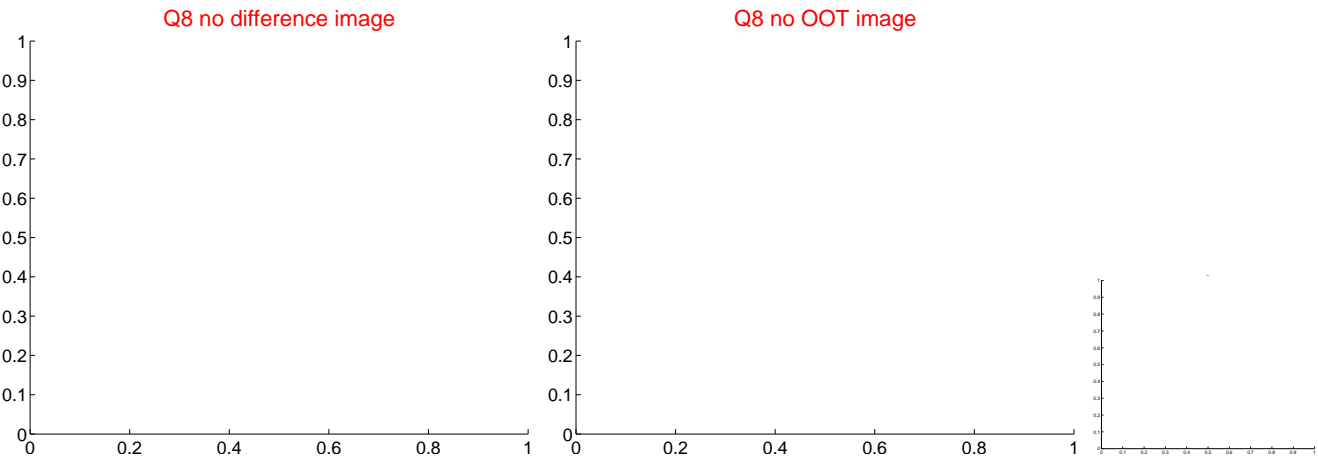


Centroid source offsets from the target star reconstructed from PRF and photometric centroids. Sky blue crosses: good quarterly centroid offsets; Vermillion crosses: bad quarterly centroid offsets; magenta cross: average over quarters. Length of the crosses: one- σ uncertainty. Blue circle: three- σ . Red *: target star. Blue *: Other stars. Text next to a star gives its KIC ID and kepmag. KIC IDs > 15,000,000 are from the UKIRT catalog.

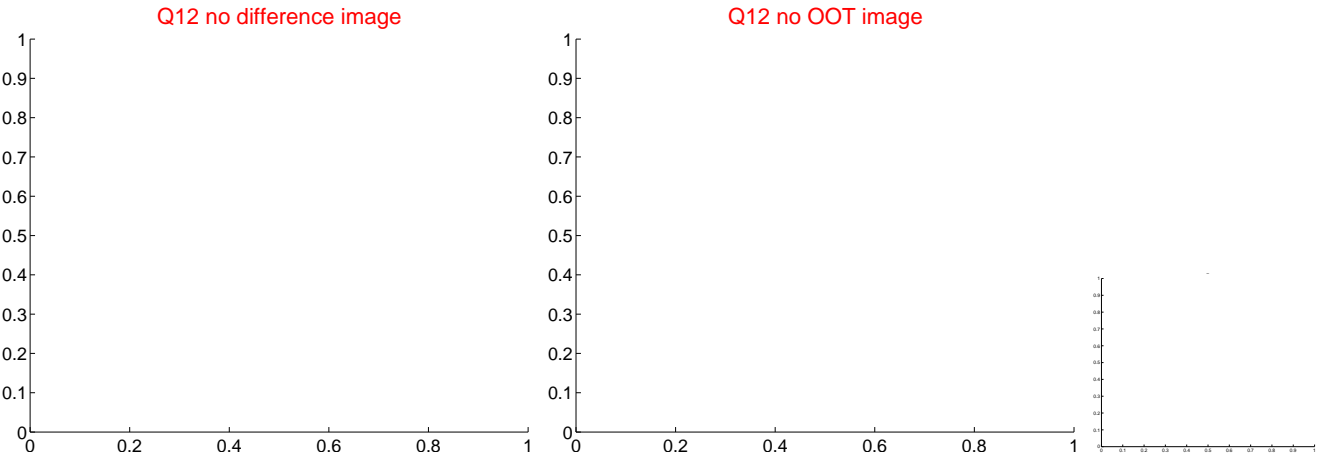
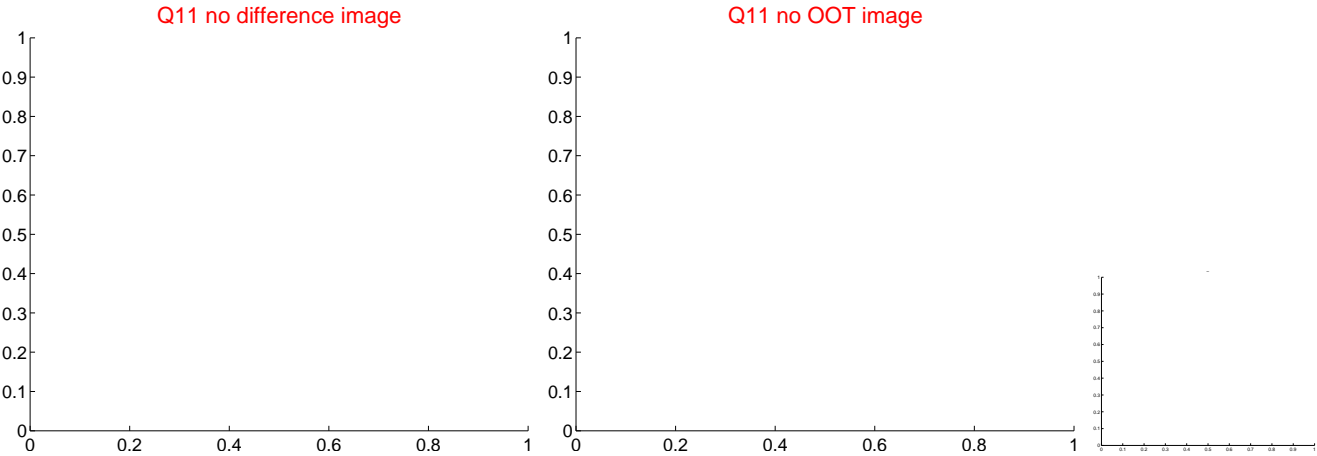
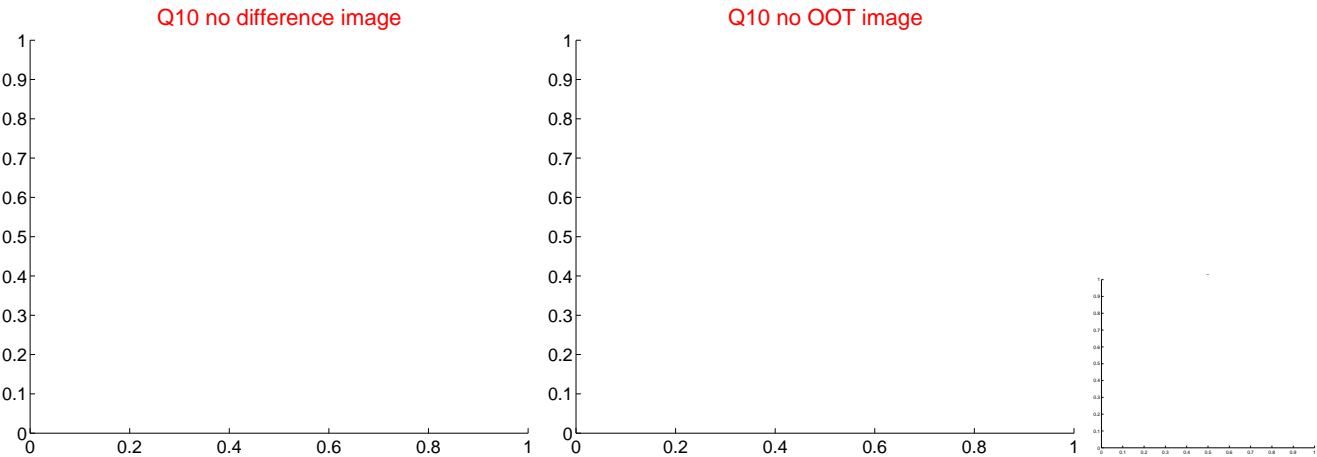
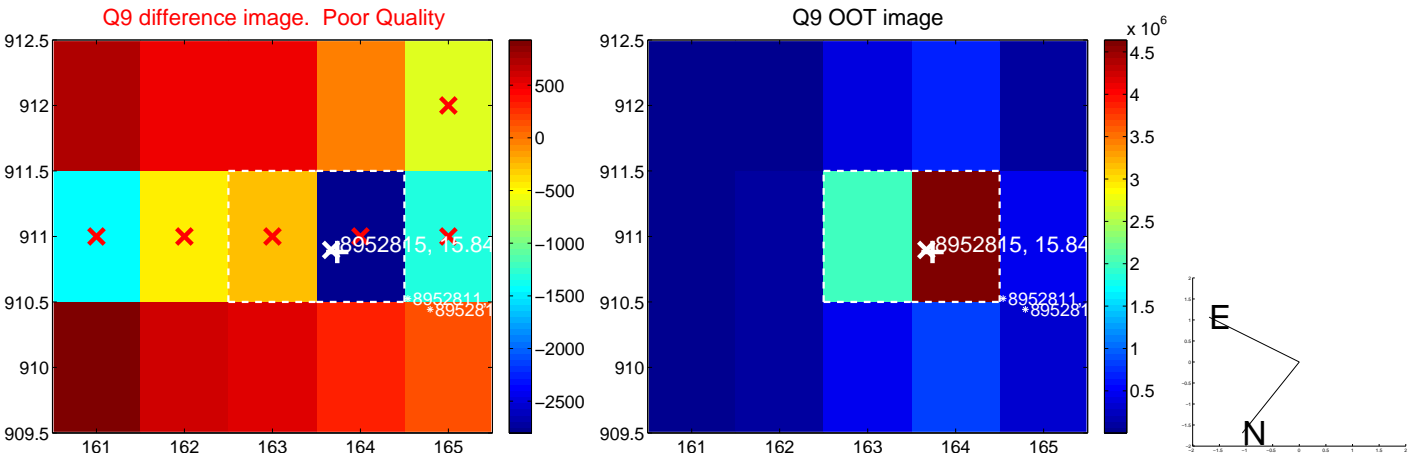
white \times : KIC target position; $+$: OOT centroid; \triangle : difference centroid. red \times : large negative pixel value.



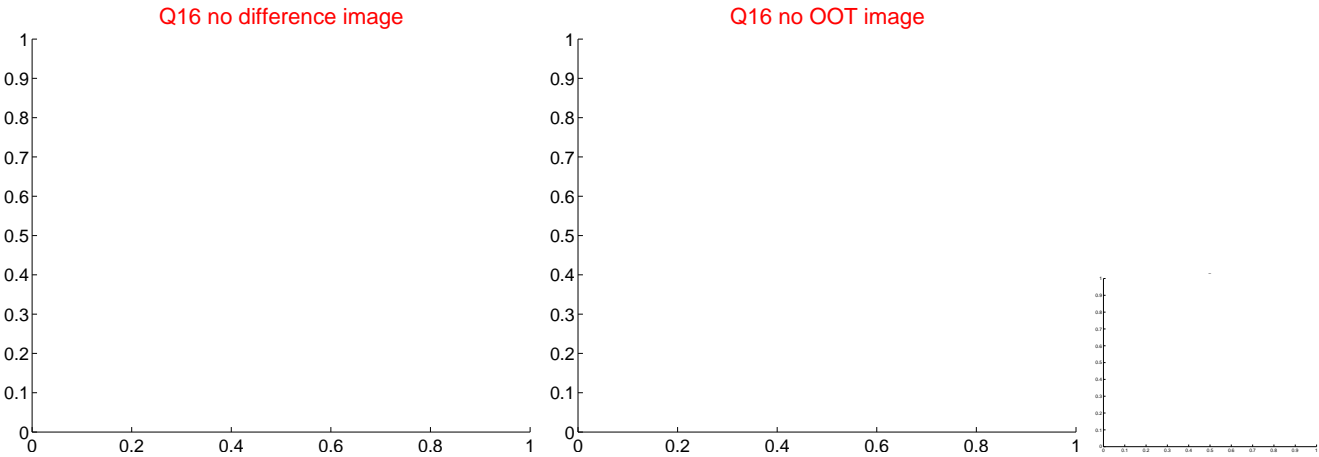
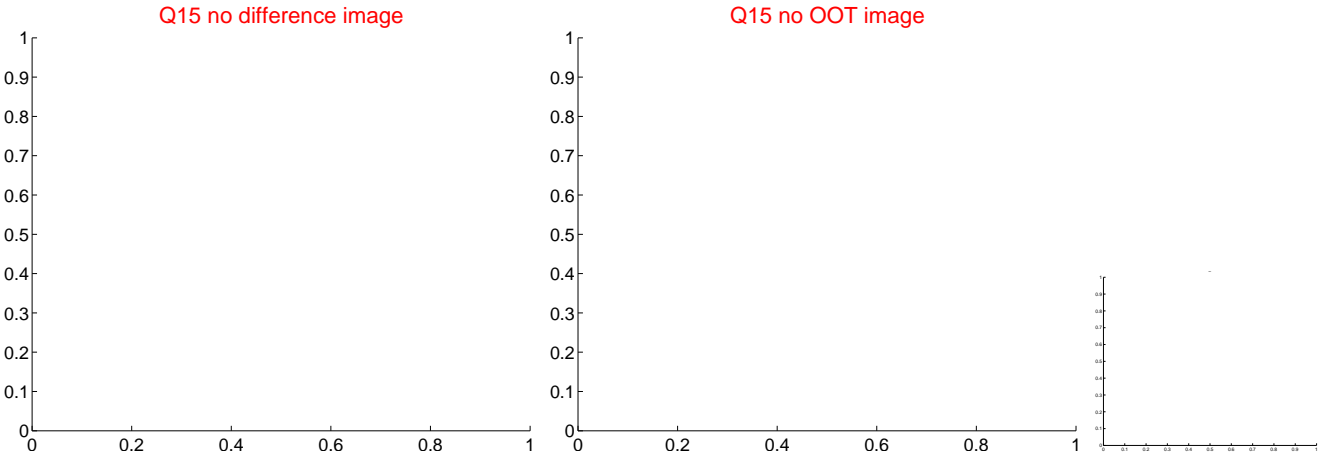
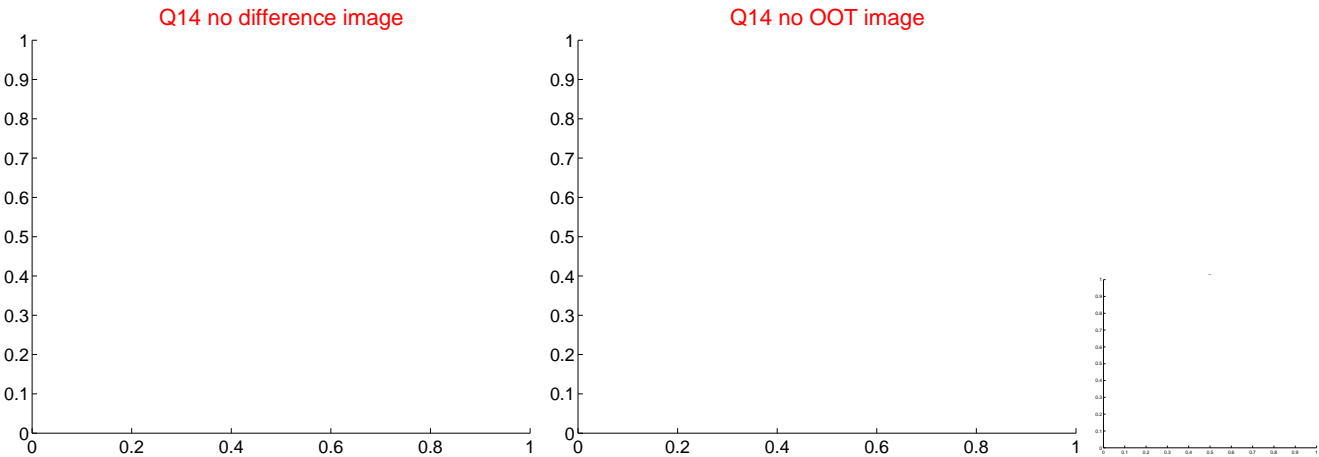
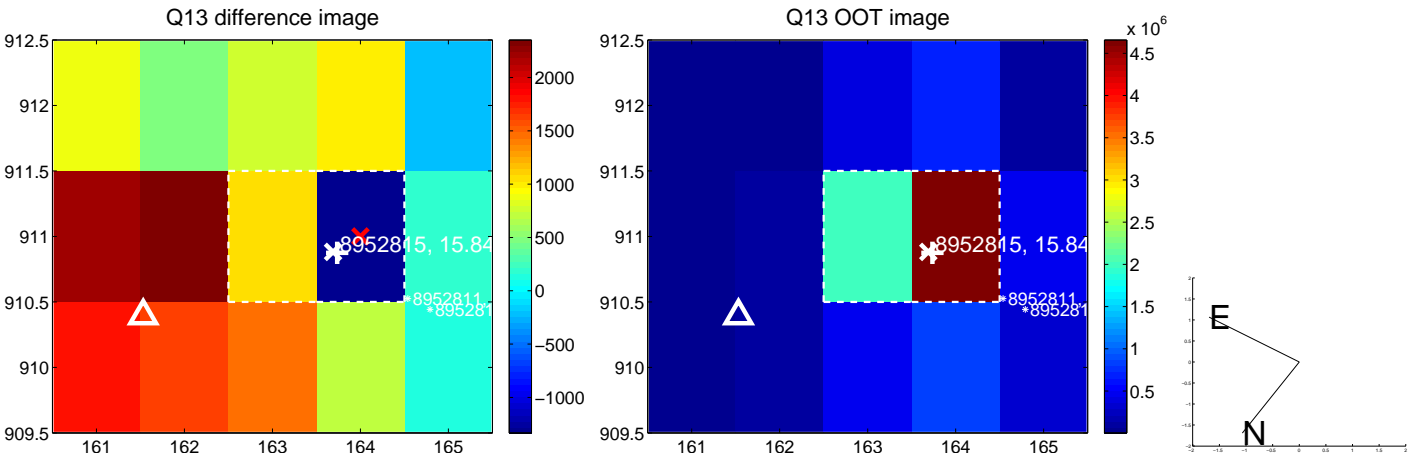
white \times : KIC target position; $+$: OOT centroid; \triangle : difference centroid. red \times : large negative pixel value.



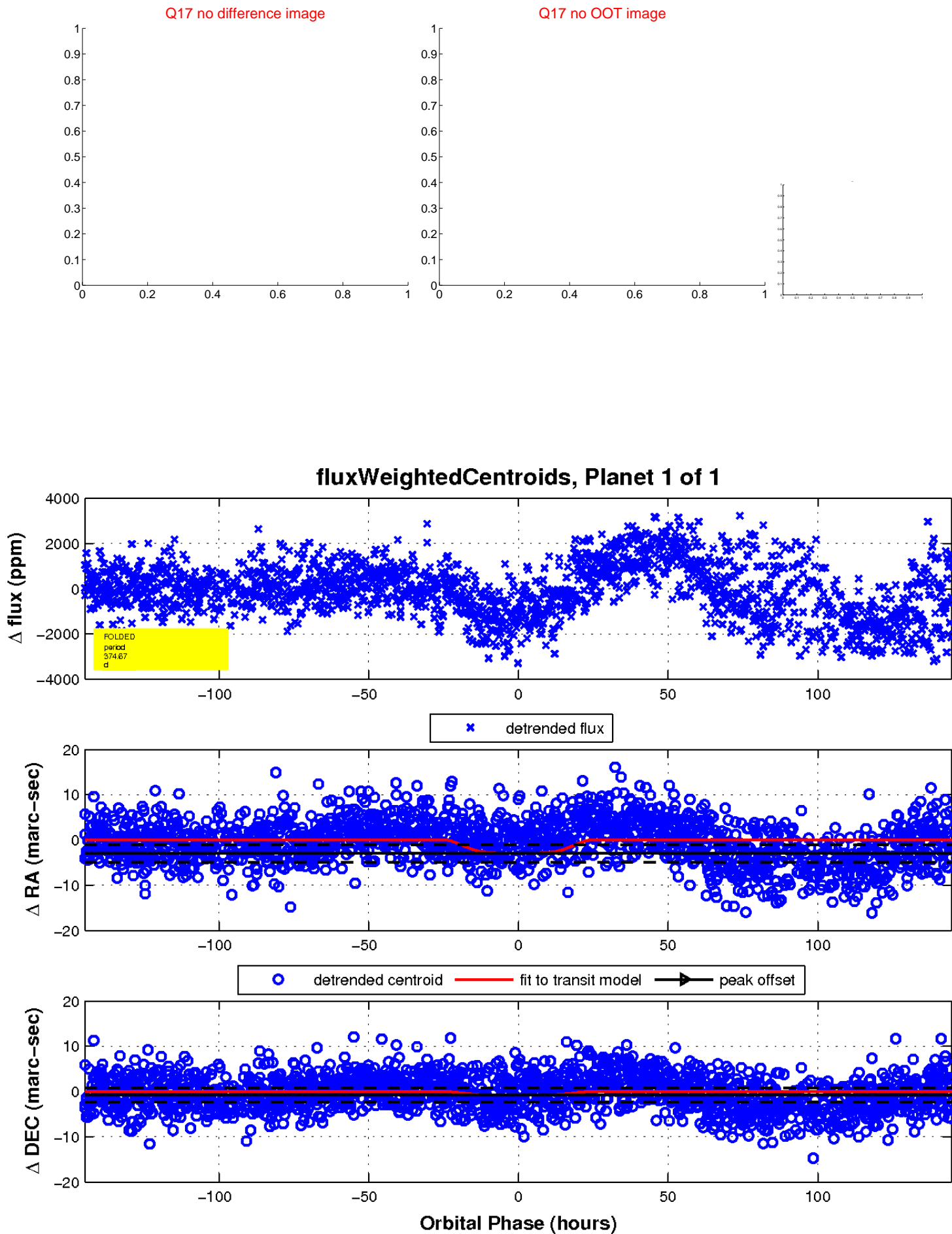
white \times : KIC target position; +: OOT centroid; \triangle : difference centroid. red \times : large negative pixel value.



white \times : KIC target position; $+$: OOT centroid; \triangle : difference centroid. red \times : large negative pixel value.



white \times : KIC target position; $+$: OOT centroid; \triangle : difference centroid. red \times : large negative pixel value.



UKIRT Image

Declination

