

KIC 008846187

Q1-17 DR25 TCE Parameters

TCE	Run Type	KOI?	Period (Days)	Epoch (BKJD)	Depth (ppm)	Duration (Hours)	MES	SNR	R_{\star} (R_{\odot})	T_{\star} (K)	R_p (R_{\oplus})	S_p (S_{\oplus})
008846187-01	OBS	No	41.180592	161.435441	262.9	2.875	7.3	7.5	14.42	4882	32.61	947.11

Robovetter Results

TCE	Run Type	Disp	Score	N	S	C	E	Comments
008846187-01	OBS	FP	0.01	1	0	0	0	MOD_NONUNIQ_DV—MOD_TER_DV—MOD_NONUNIQ_ALT

Notes: OBS = Observed. INJ = Injected. INV = Inverted. SCR = Scrambled.

N = Not Transit-Like. S = Stellar Eclipse. C = Centroid Offset. E = Ephemeris Match.

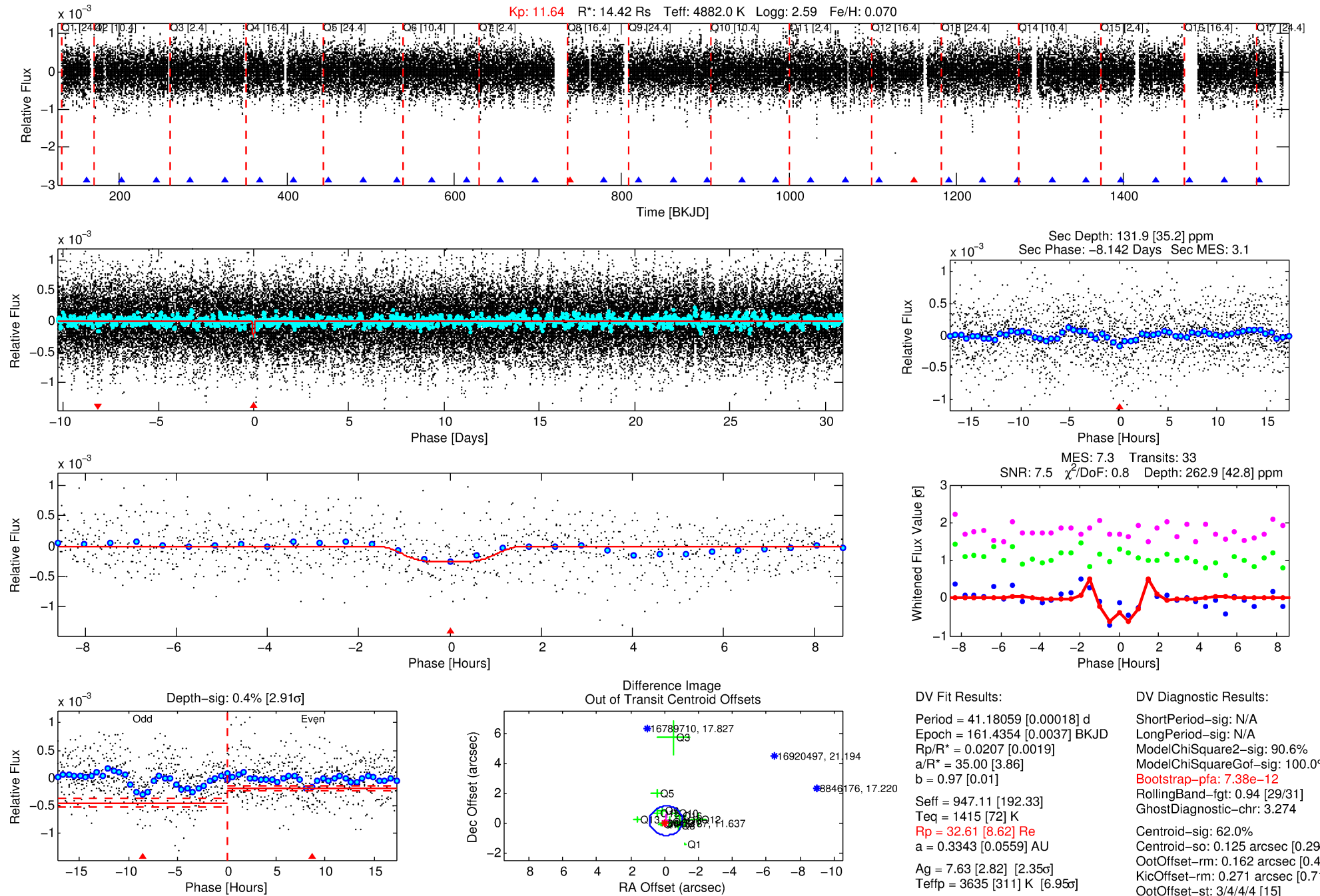
See http://exoplanetarchive.ipac.caltech.edu/docs/API_kepcandidate_columns.html#proj_disp_col for comment definitions.

Ephemeris Match Information For 008846187-01

No Significant Match Found

DV One-Page Summary

KIC: 8846187 Candidate: 1 of 1 Period: 41.181 d



DV Fit Results:

Period = 41.18059 [0.00018] d
Epoch = 161.4354 [0.0037] BKJD
Rp/R* = 0.0207 [0.0019]
a/R* = 35.00 [3.86]
b = 0.97 [0.01]
Seff = 947.11 [192.33]
Teff = 1415 [72] K
Rp = 32.61 [8.62] Re
a = 0.3343 [0.0559] AU
Ag = 7.63 [2.82] [2.35 σ]
Teffp = 3635 [311] K [6.95 σ]

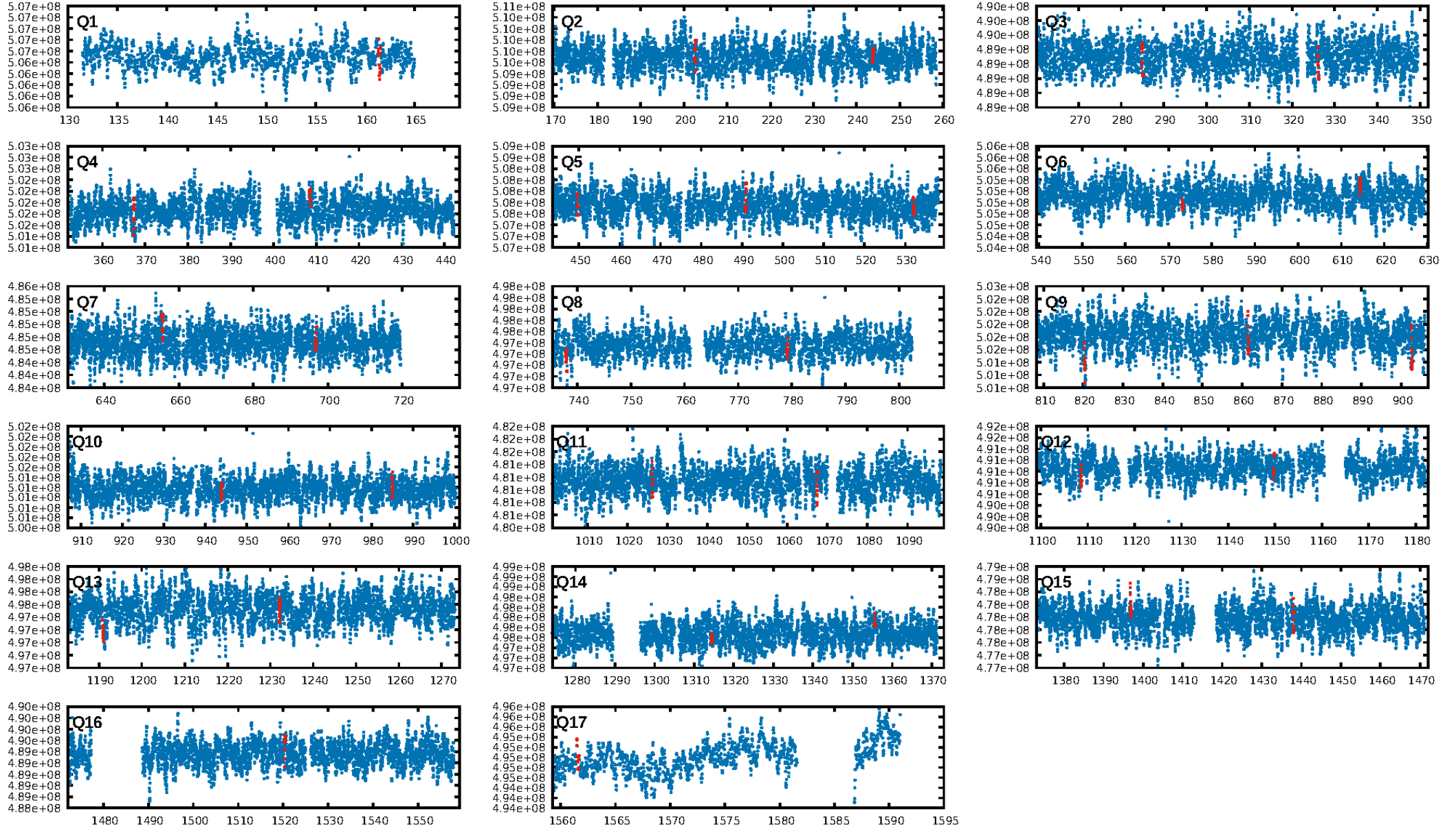
DV Diagnostic Results:

ShortPeriod-sig: N/A
LongPeriod-sig: N/A
ModelChiSquare2-sig: 90.6%
ModelChiSquareGof-sig: 100.0%
Bootstrap-pfa: 7.38e-12
RollingBand-fgt: 0.94 [29/31]
GhostDiagnostic-chr: 3.274
Centroid-sig: 62.0%
Centroid-so: 0.125 arcsec [0.29 σ]
OotOffset-rm: 0.162 arcsec [0.49 σ]
KicOffset-rm: 0.271 arcsec [0.71 σ]
OotOffset-st: 3/4/4/4 [15]
KicOffset-st: 3/4/4/4 [15]
DiffImageQuality-fgm: 0.73 [11/15]
DiffImageOverlap-fno: 1.00 [17/17]

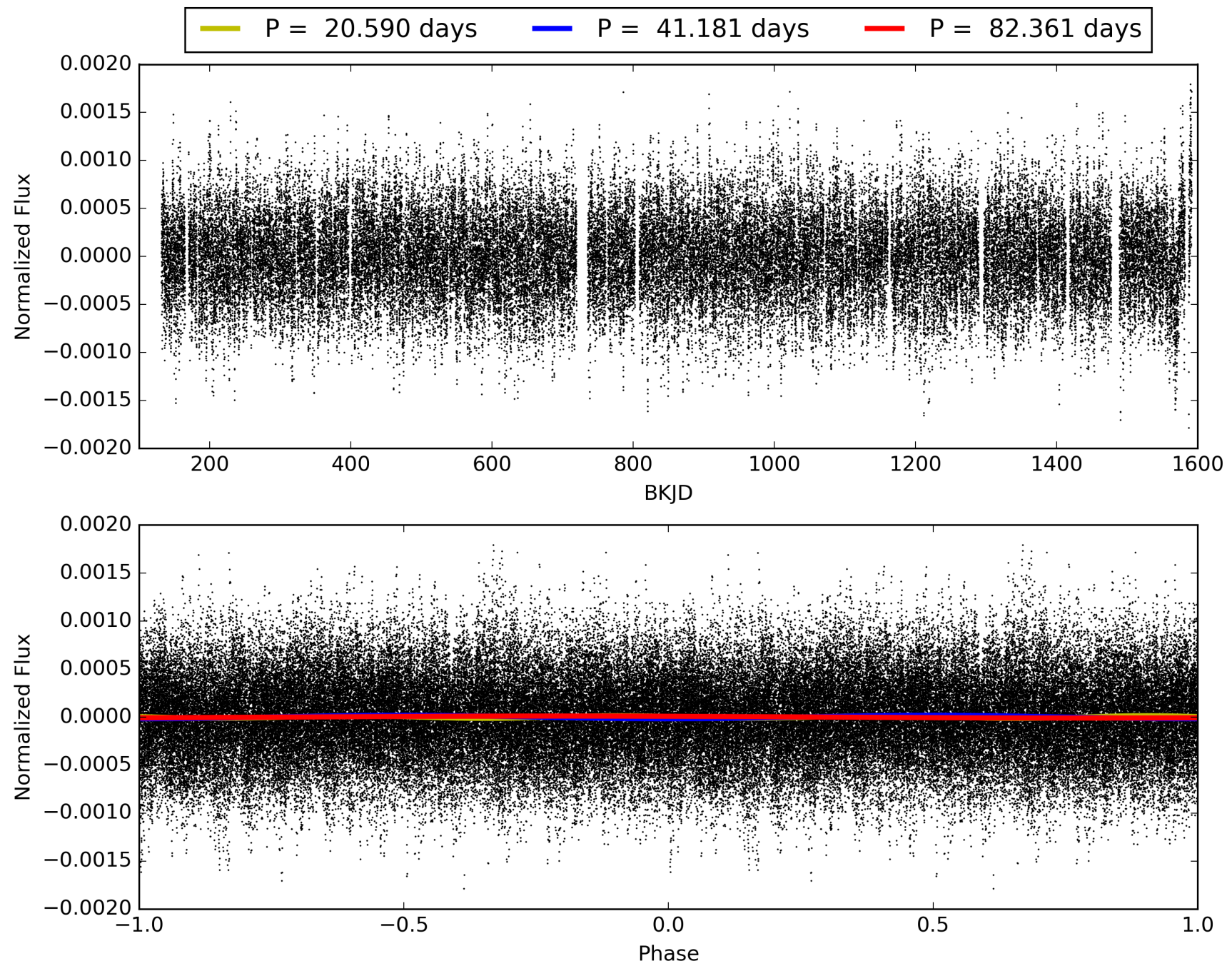
Software Revision: svn+ssh://murzim/repo/soc/tags/release/9.3.42@60958 -- Date Generated: 29-Jan-2016 21:07:31 Z

This Data Validation Report Summary was produced in the Kepler Science Operations Center Pipeline at NASA Ames Research Center

TCE 008846187-01, PDC Light Curves

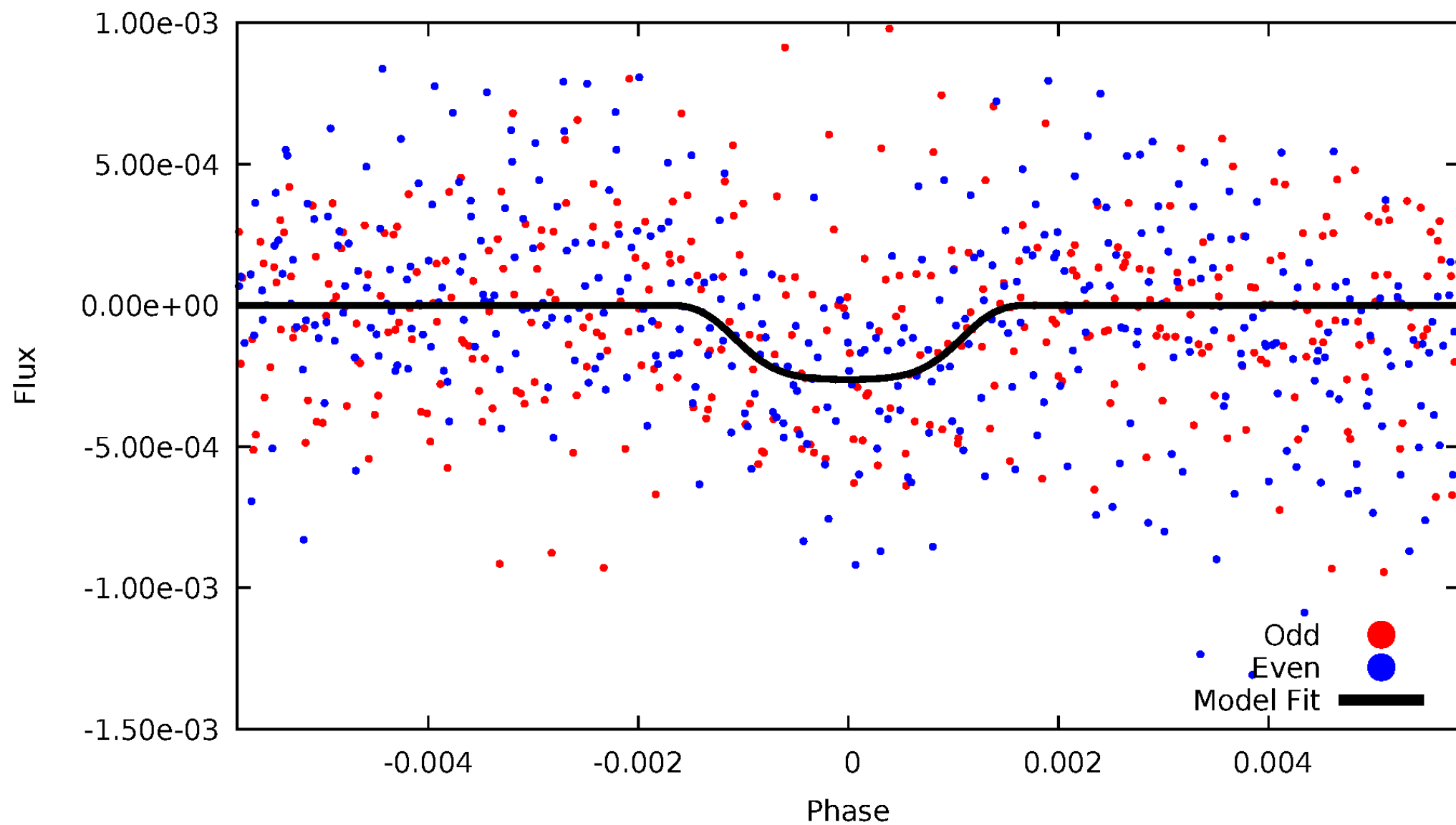


TCE 008846187-01



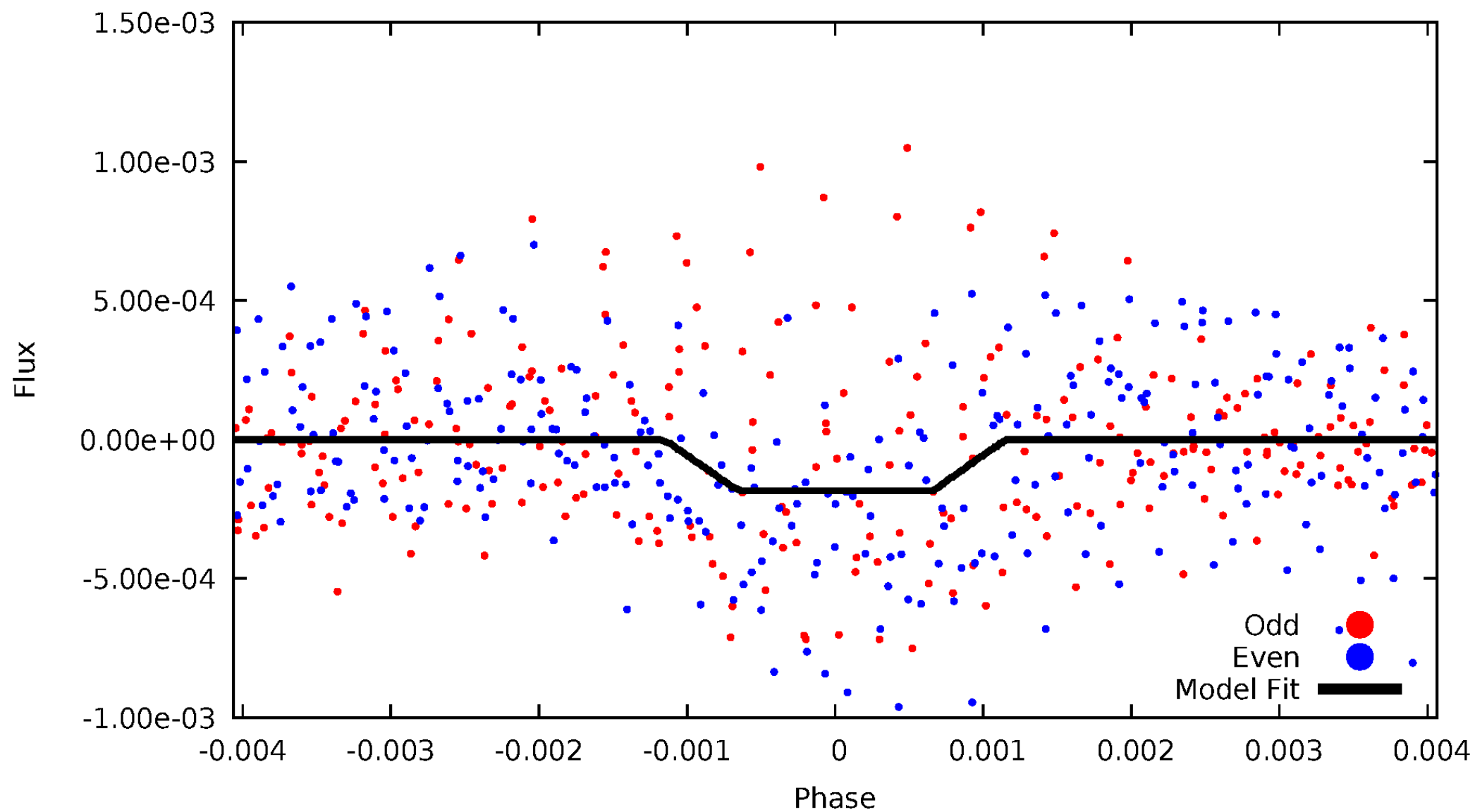
DV Odd/Even

TCE 008846187-01

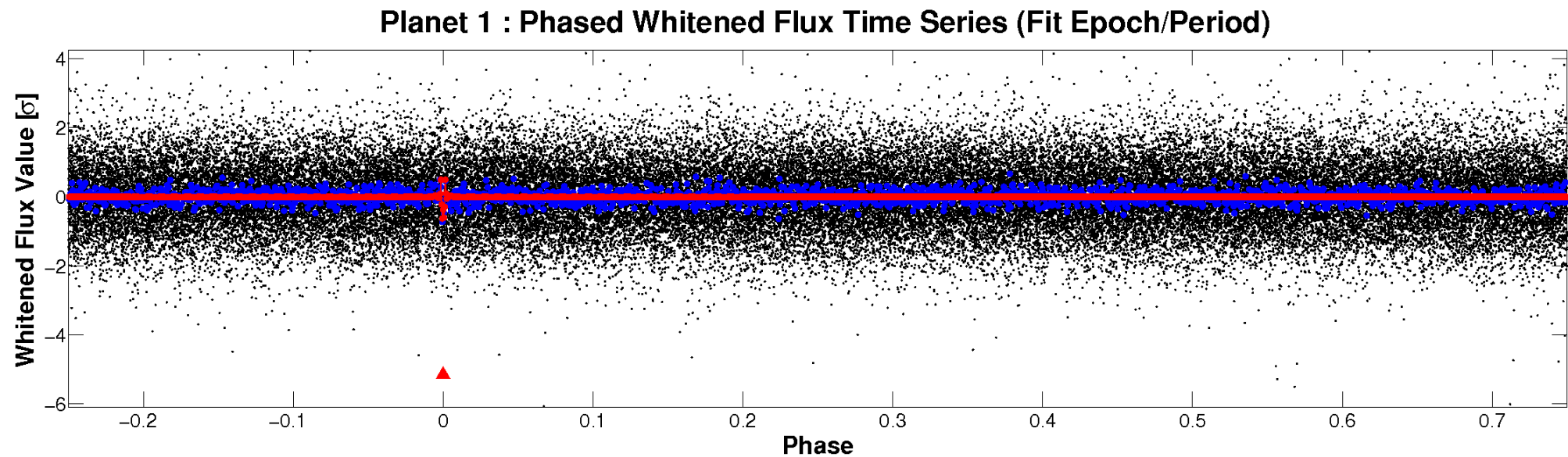
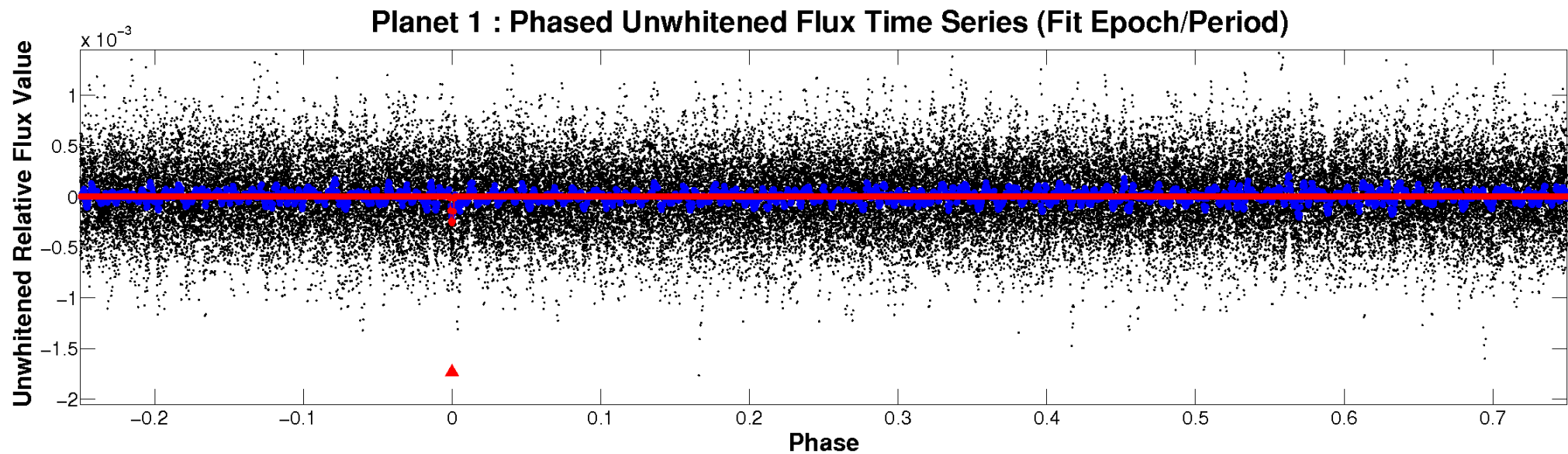


ALT Odd/Even

TCE 008846187-01

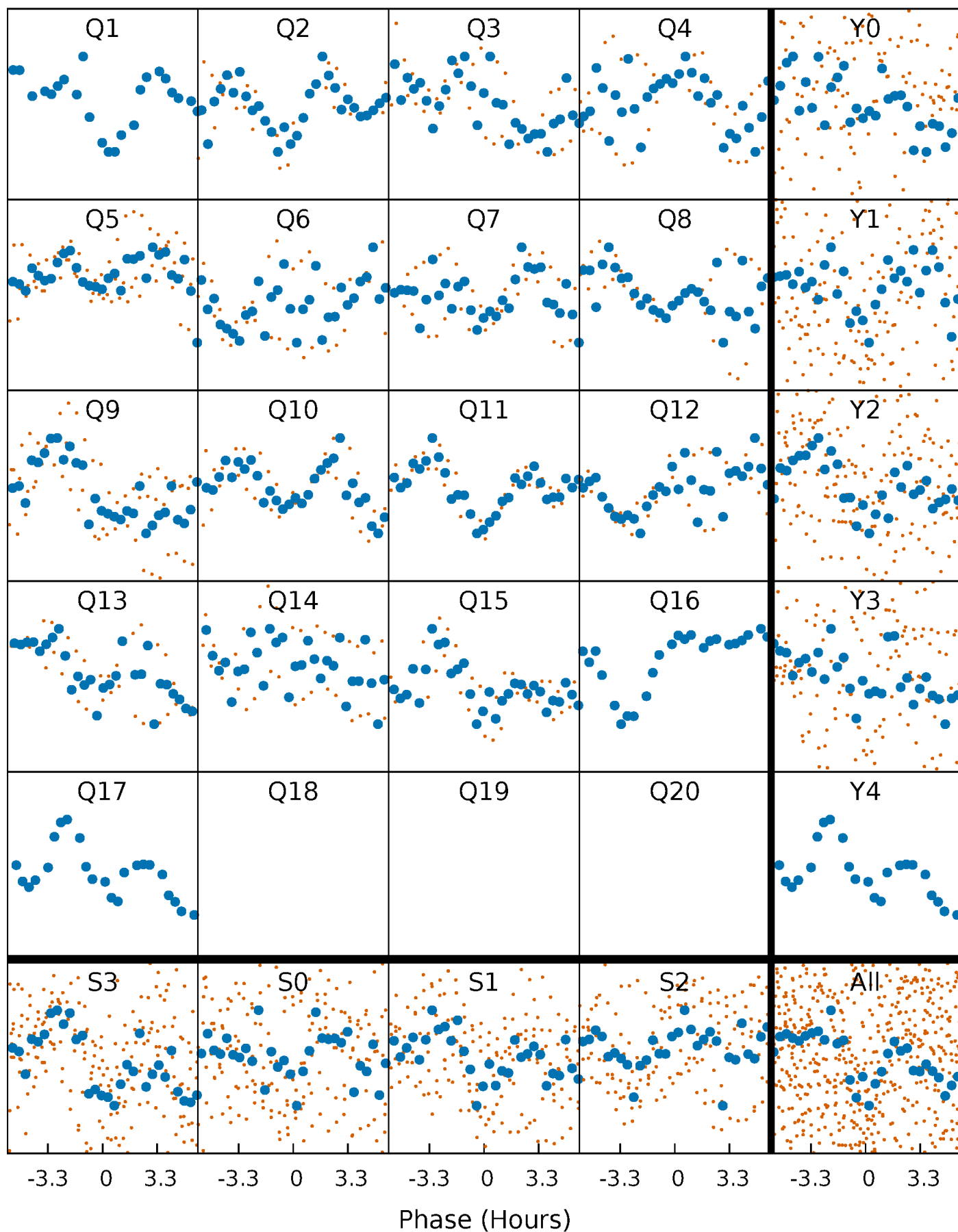


Non-Whitened Vs. Whitened Light Curve



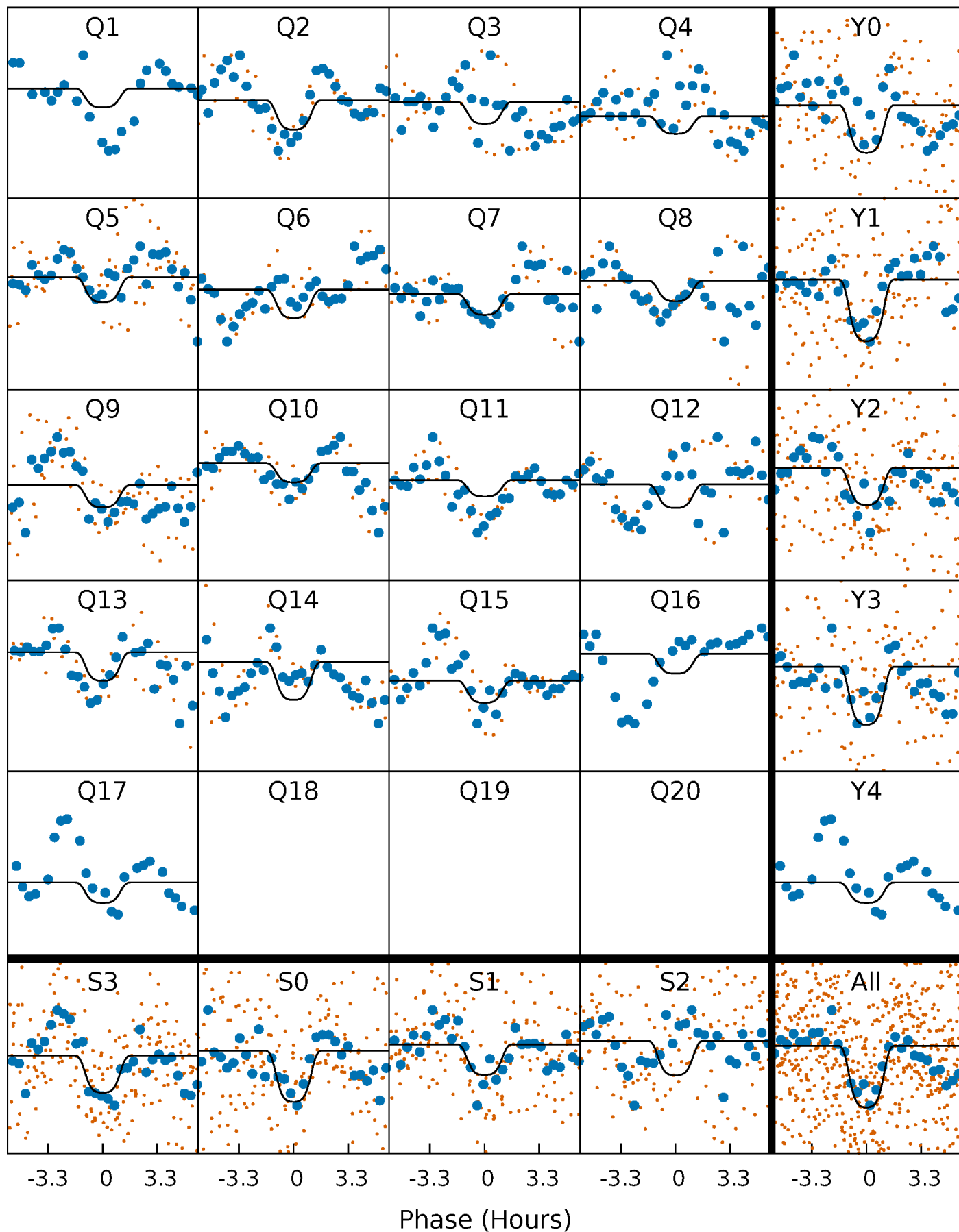
PDC Quarter-Phased Transit Curves

TCE 008846187-01 P= 41.180592 Days $T_0=161.435441$ (BKJD)



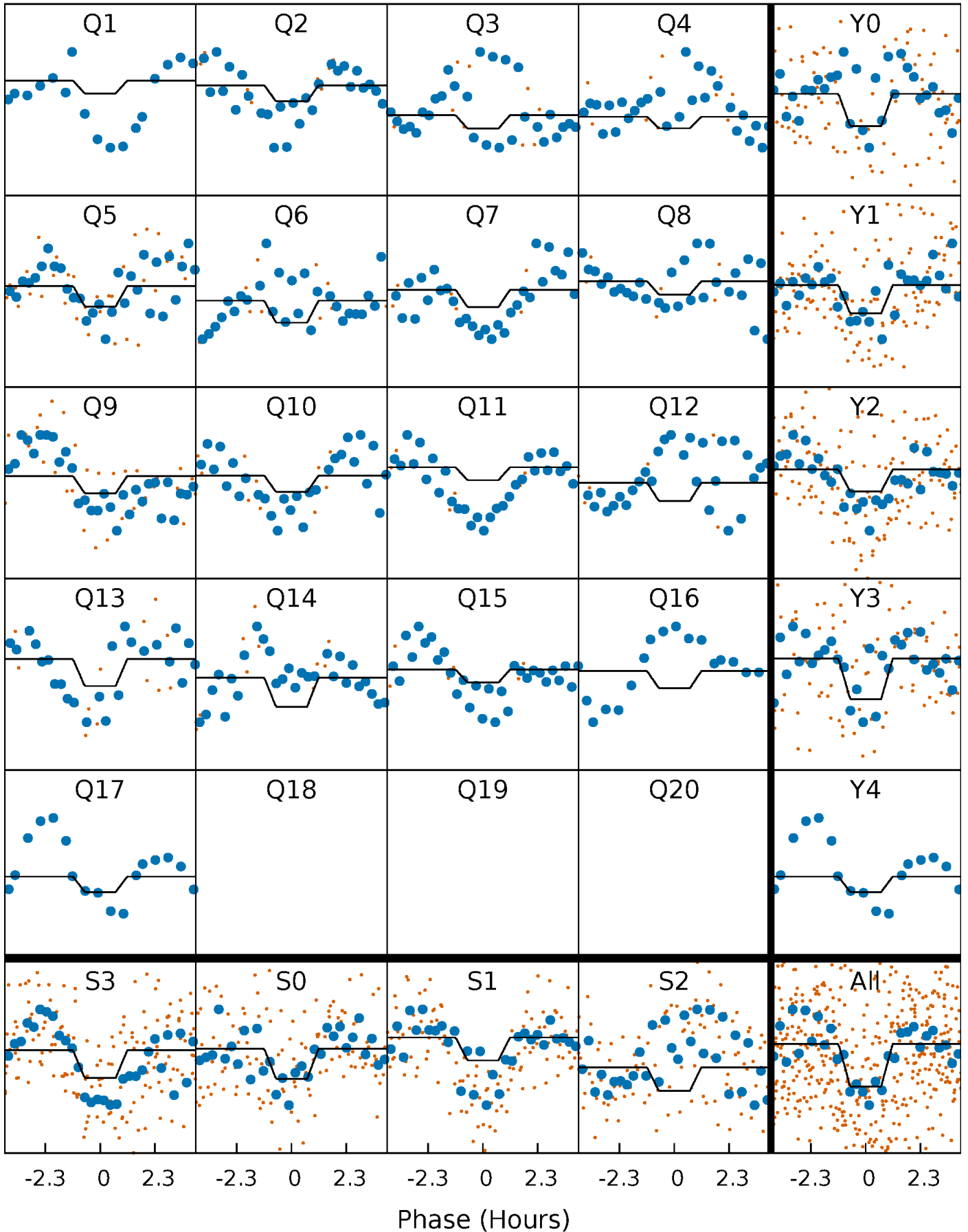
DV Quarter-Phased Transit Curves

TCE 008846187-01 P= 41.180592 Days $T_0=161.435441$ (BKJD)



Alt. Detrend Quarter-Phased Transit Curves

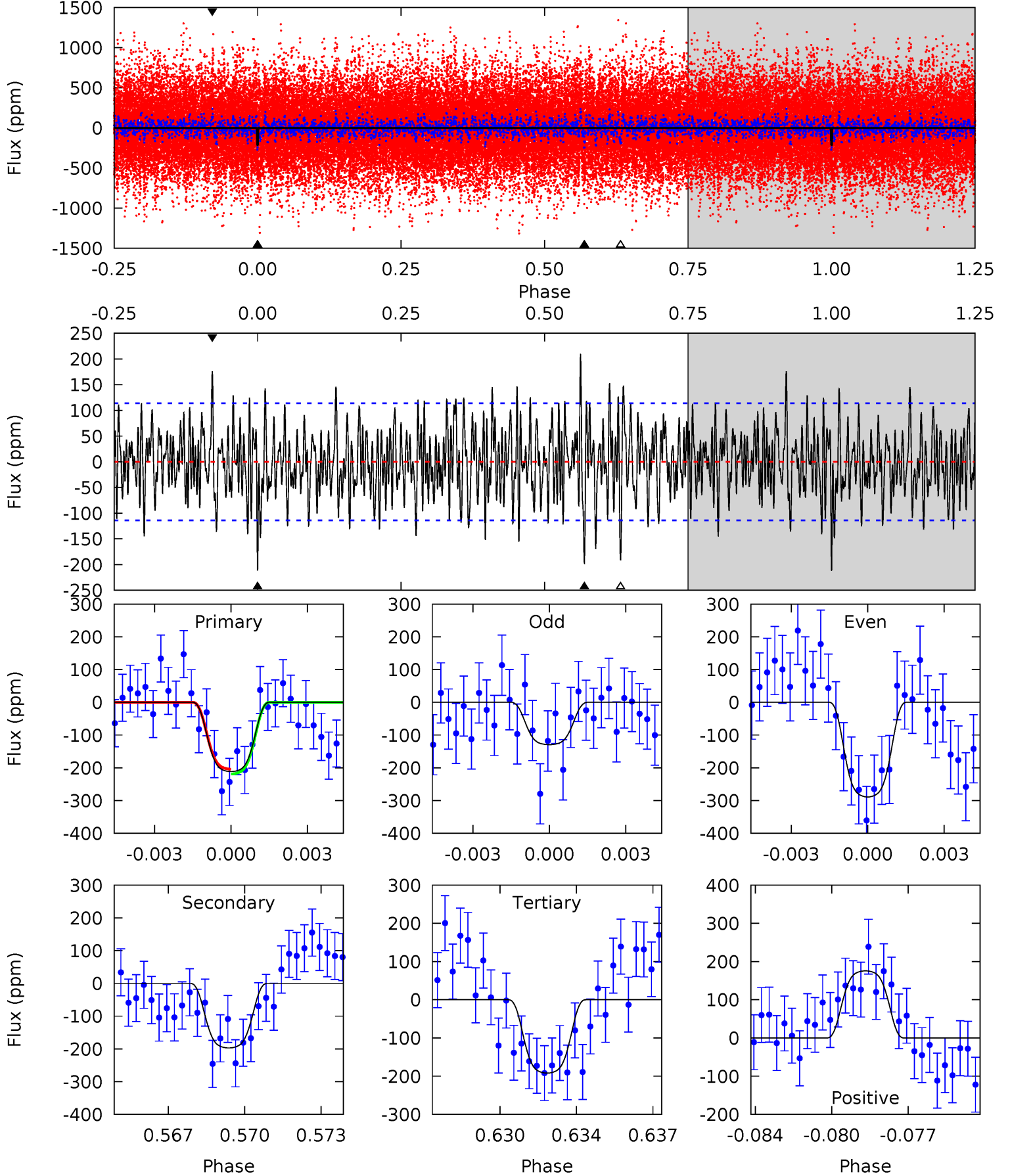
TCE 008846187-01 P= 41.180792 Days $T_0=161.430476$ (BKJD)



DV Model-Shift Uniqueness Test

008846187-01, P = 41.180592 Days, E = 120.254849 Days

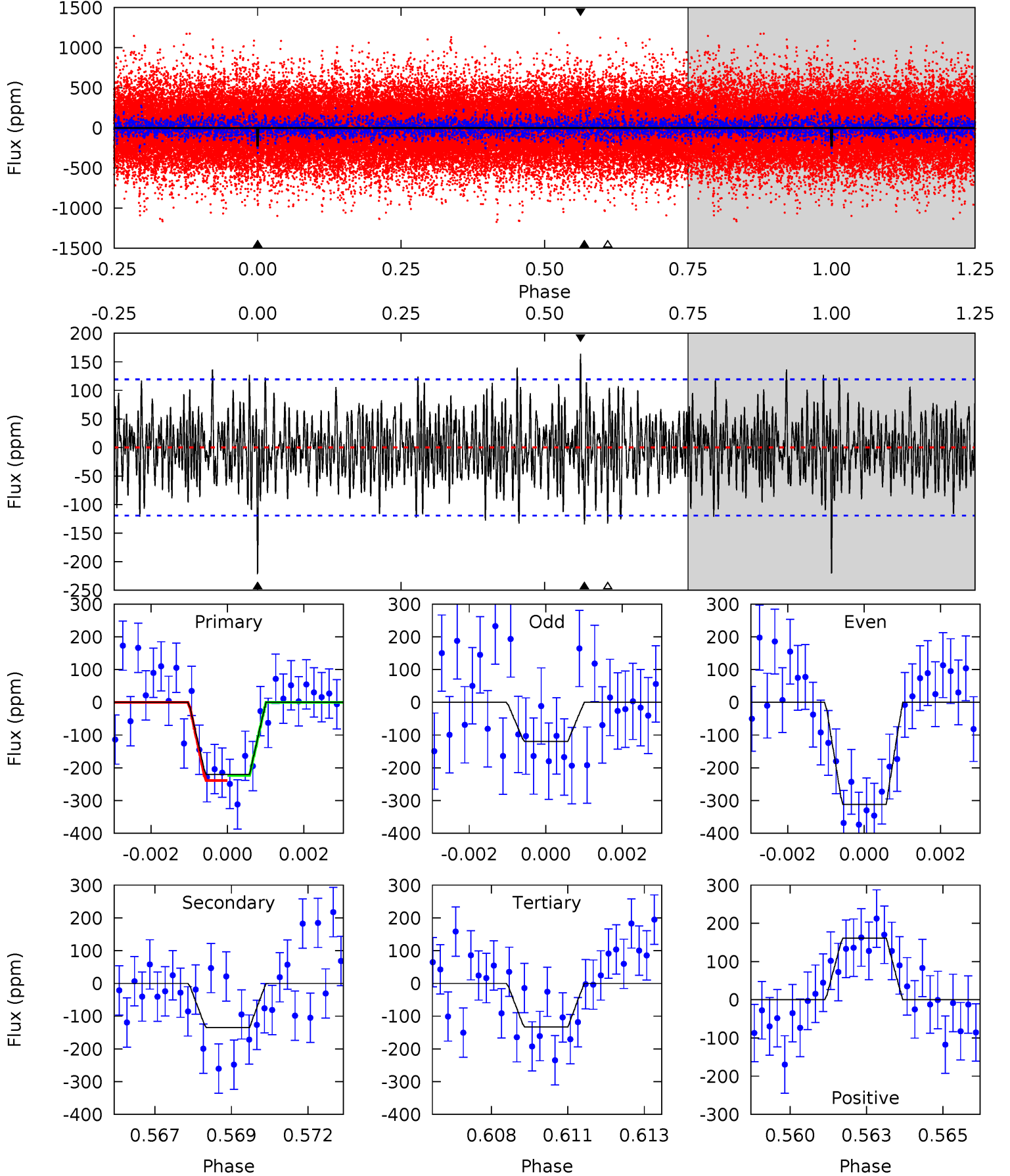
Pri	Sec	Ter	Pos	FA ₁	FA ₂	F _{Red}	Pri-Ter	Pri-Pos	Sec-Ter	Sec-Pos	Odd-Evn	DMM	Shape	TAT
9.73	9.06	8.82	8.07	5.23	2.93	2.67	0.91	1.66	0.24	0.99	3.68	0.84	0.50	0.34



Alt Model-Shift Uniqueness Test

008846187-01, P = 41.180792 Days, E = 120.249684 Days

Pri	Sec	Ter	Pos	FA ₁	FA ₂	F _{Red}	Pri-Ter	Pri-Pos	Sec-Ter	Sec-Pos	Odd-Evn	DMM	Shape	TAT
9.82	5.99	5.92	7.19	5.30	3.05	2.04	3.90	2.63	0.08	-1.19	4.29	0.71	0.43	0.34



Stellar Parameters For KIC 008846187

	$T_{\text{eff}}(K)$	$\log(g)$	[Fe/H]	$R (R_{\odot})$	$M(M_{\odot})$	$p_{\star} (\text{g}\cdot\text{cm}^{-3})$
	4882^{+59}_{-128}	$2.588^{+0.036}_{-0.027}$	$0.070^{+0.150}_{-0.200}$	$14.423^{+0.669}_{-3.567}$	$2.939^{+0.145}_{-1.307}$	$0.001^{+0.000}_{-0.000}$
	+1%/-3%	+1%/-1%	+214%/-286%	+5%/-25%	+5%/-44%	+34%/-10%
Source	SPE74	AST11	SPE74	DSEP		

KIC = Kepler Input Catalog; PHO = Photometry; SPE = Spectroscopy; AST = Asteroseismology
 TRA = Transits; DESP = Dartmouth Models; MULT = Multiple Models

Secondary Eclipse Parameters for KIC 008846187-01 / KOI

Detrend	Depth (ppm)	$R_p (R_{\oplus})$	$T_{\text{max}} (K)$	$T_{\text{obs}} (K)$	A_{obs}
DV	-197 ± 22	$32.90^{+3.21}_{-3.35}$	1973^{+40}_{-58}	4153^{+183}_{-168}	11^{+3}_{-2}
Alt.	-135 ± 22	$21.33^{+3.16}_{-3.54}$	1967^{+43}_{-56}	4545^{+336}_{-270}	18^{+8}_{-5}

T_{max} = Theoretical Maximum Planetary Temperature

T_{obs} = Observed Planetary Temperature (Assuming A=0.3)

A_{obs} = Observed Albedo (Assuming T=0)

If a secondary eclipse is present, the system is likely an EB if $T_{\text{obs}} \gg T_{\text{max}}$ AND $A_{\text{obs}} \gg 1.0$

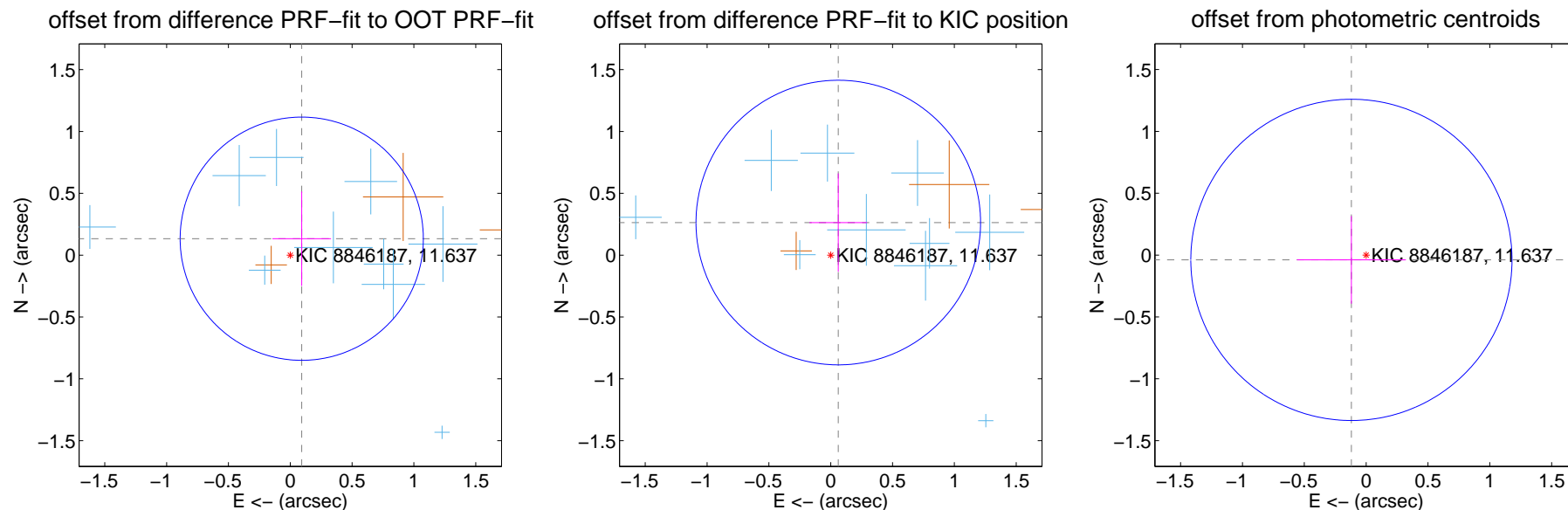
DV Centroid Data

Supplemental centroid analysis for 008846187-01. **Kepler magnitude: 11.64.** Transit SNR 7.47

There are 11 quarters with good PRF difference image offsets

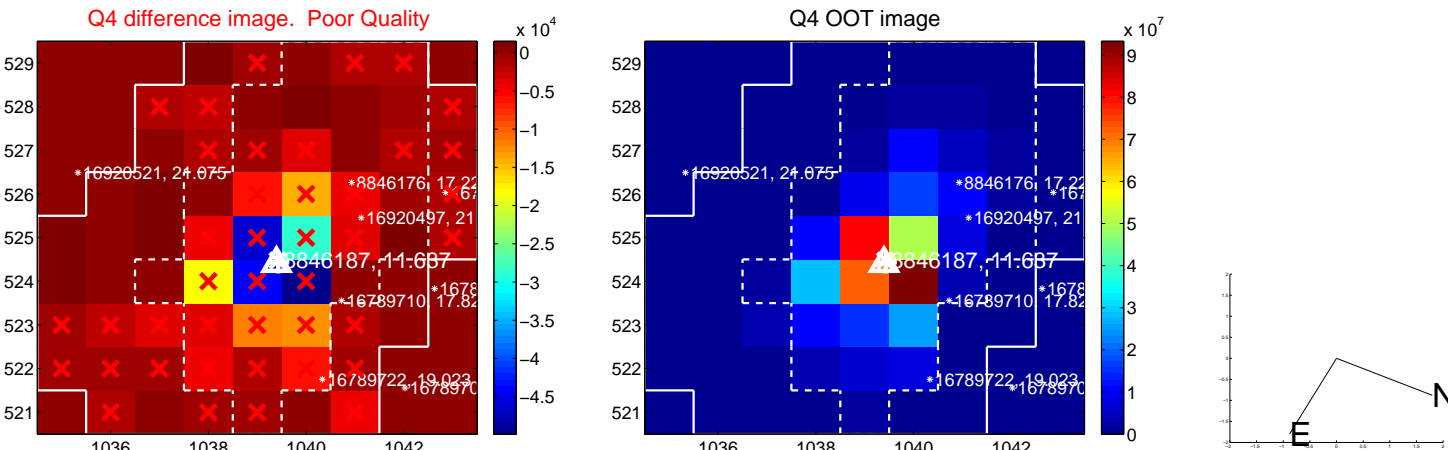
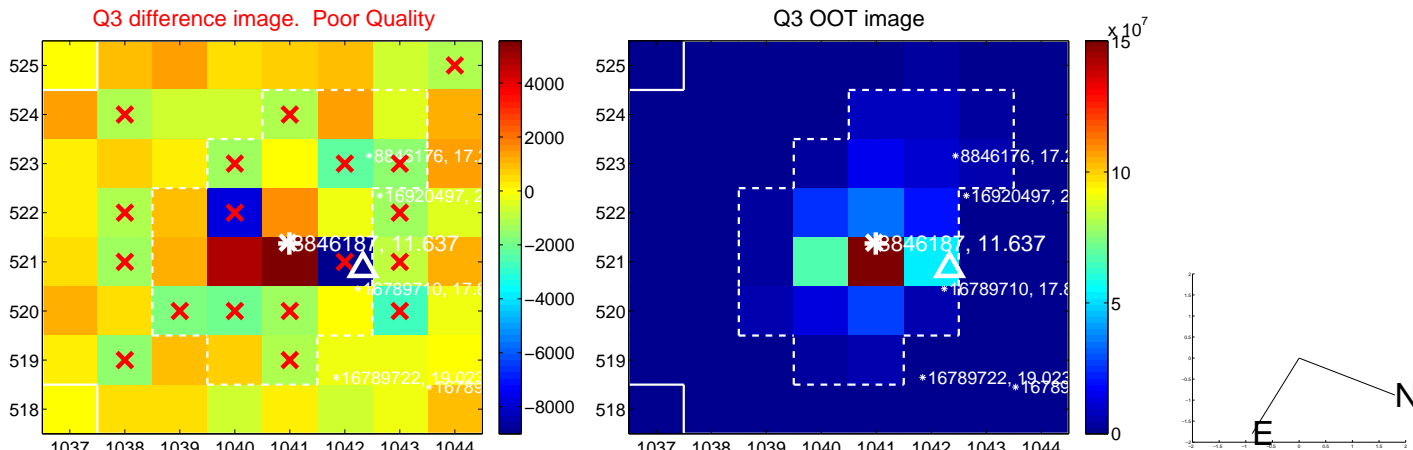
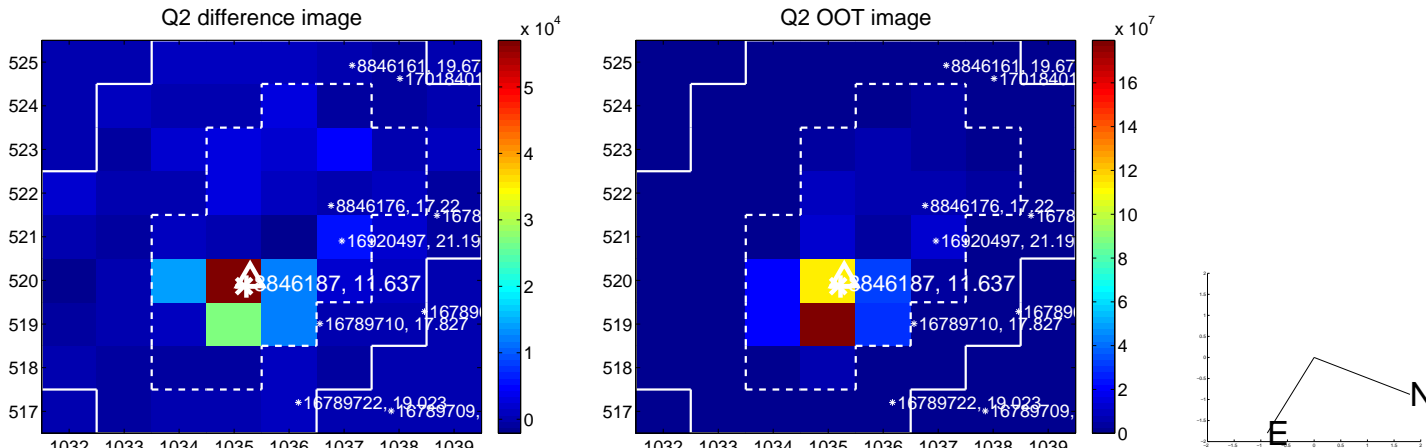
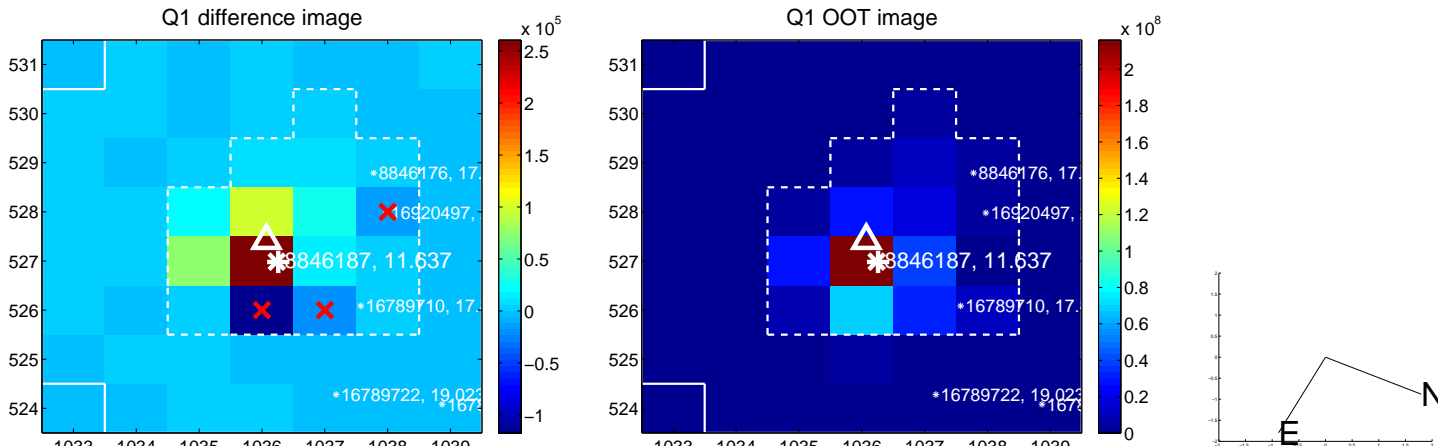
The direct PRF centroid is offset from the target star catalog position by about 0.11 arcsec

	Distance in arcsec	Distance / σ	Δ RA	Δ Dec
PRF-fit source offset from OOT	0.162 ± 0.328	0.49	-0.093 ± 0.237	0.133 ± 0.382
PRF-fit source offset from KIC position	0.271 ± 0.384	0.71	-0.061 ± 0.233	0.264 ± 0.398
photometric centroid source offset	0.13 ± 0.43	0.29	0.12 ± 0.44	-0.04 ± 0.35

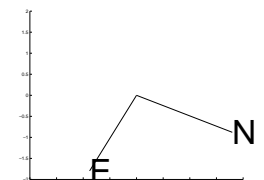
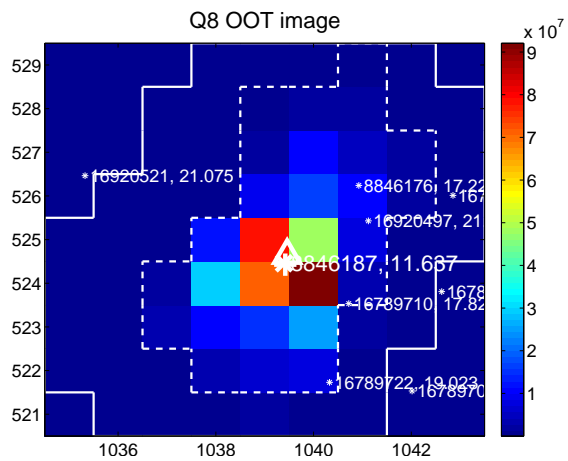
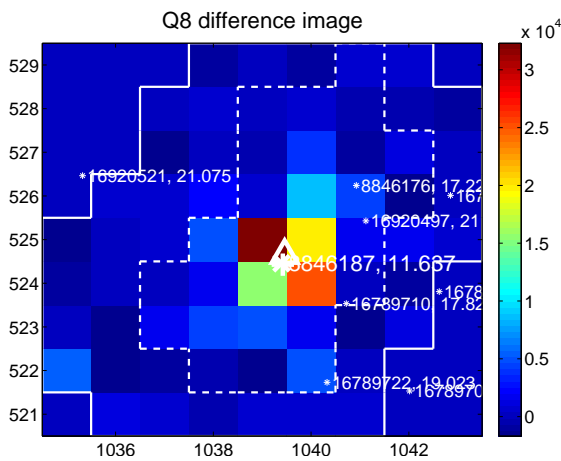
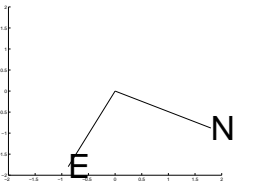
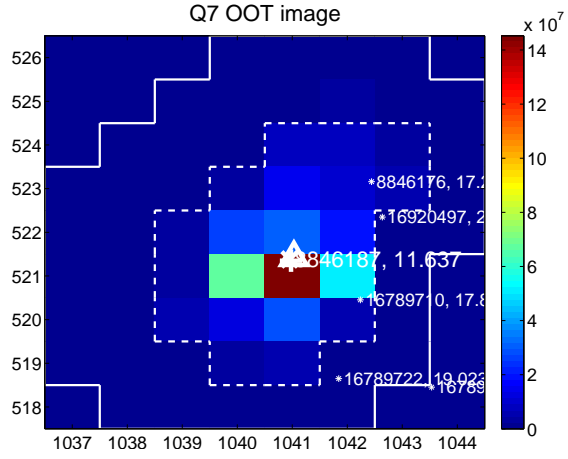
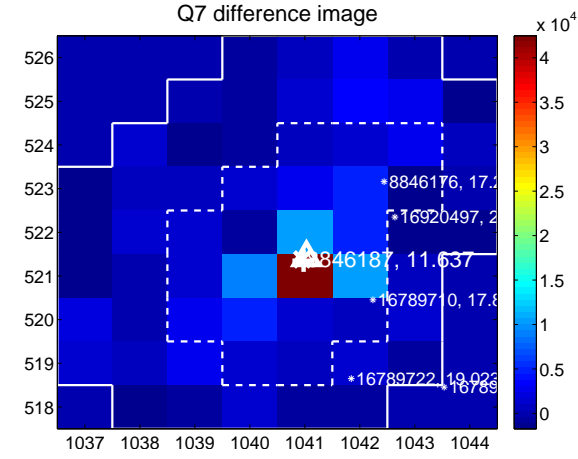
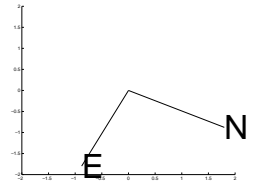
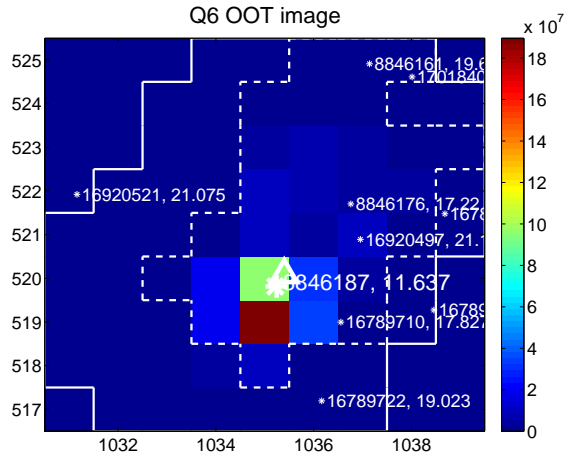
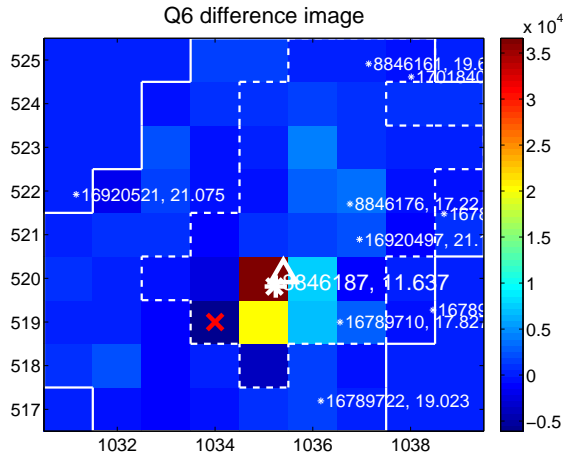
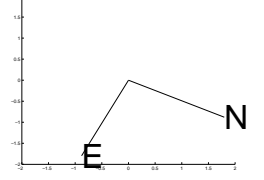
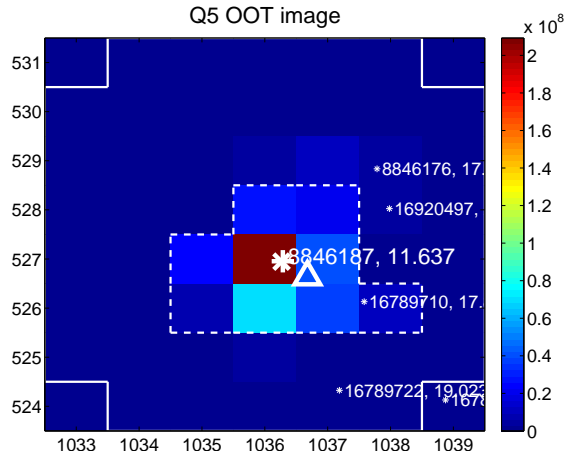
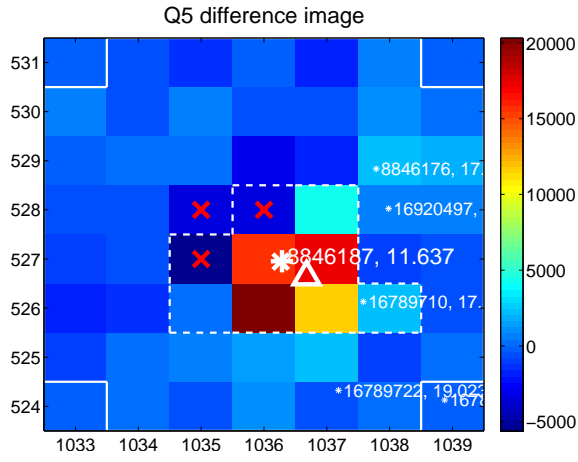


Centroid source offsets from the target star reconstructed from PRF and photometric centroids. **Sky blue crosses: good quarterly centroid offsets; Vermillion crosses: bad quarterly centroid offsets;** magenta cross: average over quarters. Length of the crosses: one- σ uncertainty. Blue circle: three- σ . Red *: target star. Blue *: Other stars. Text next to a star gives its KIC ID and kepmag. KIC IDs > 15,000,000 are from the UKIRT catalog.

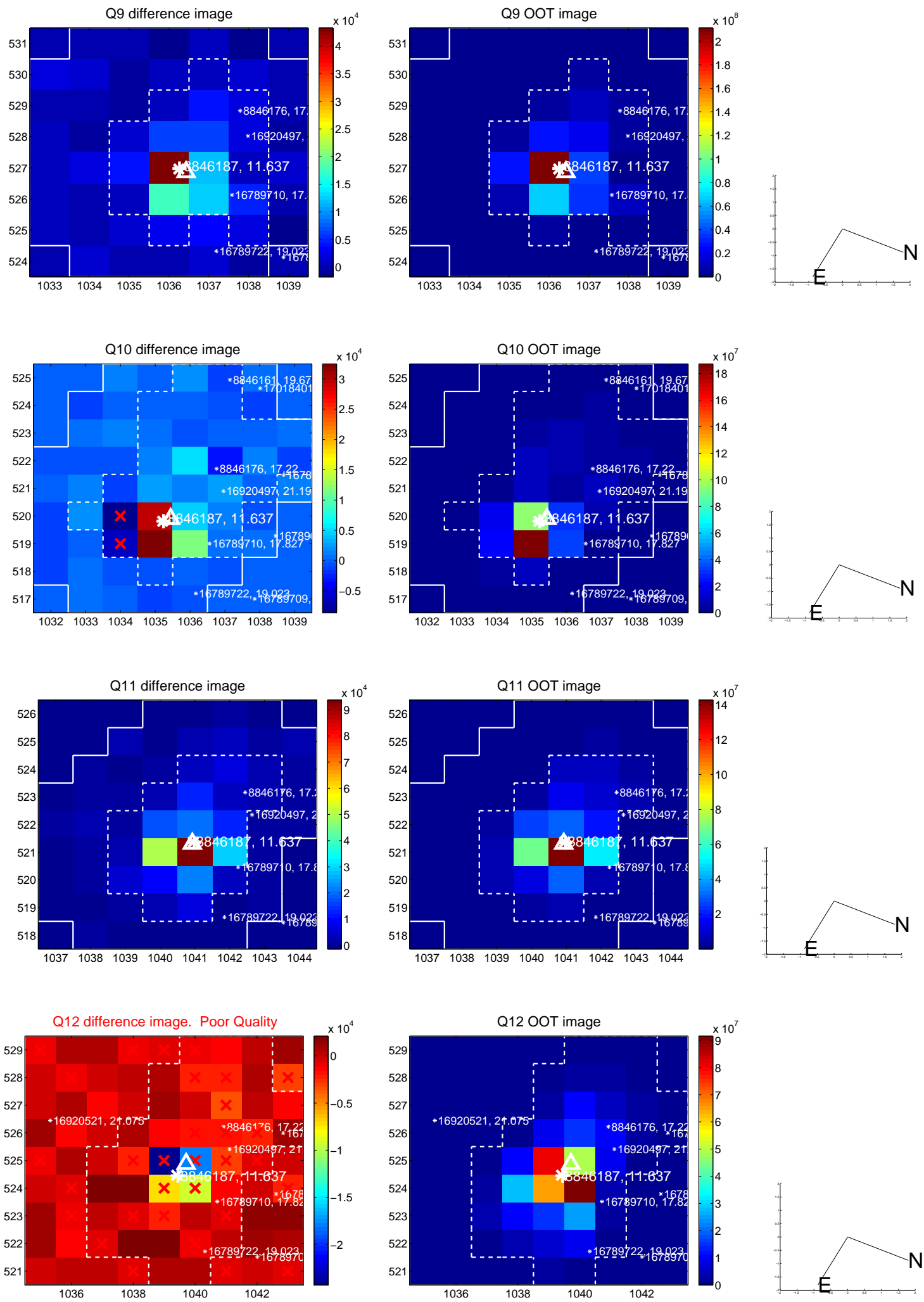
white \times : KIC target position; $+$: OOT centroid; \triangle : difference centroid. red \times : large negative pixel value.



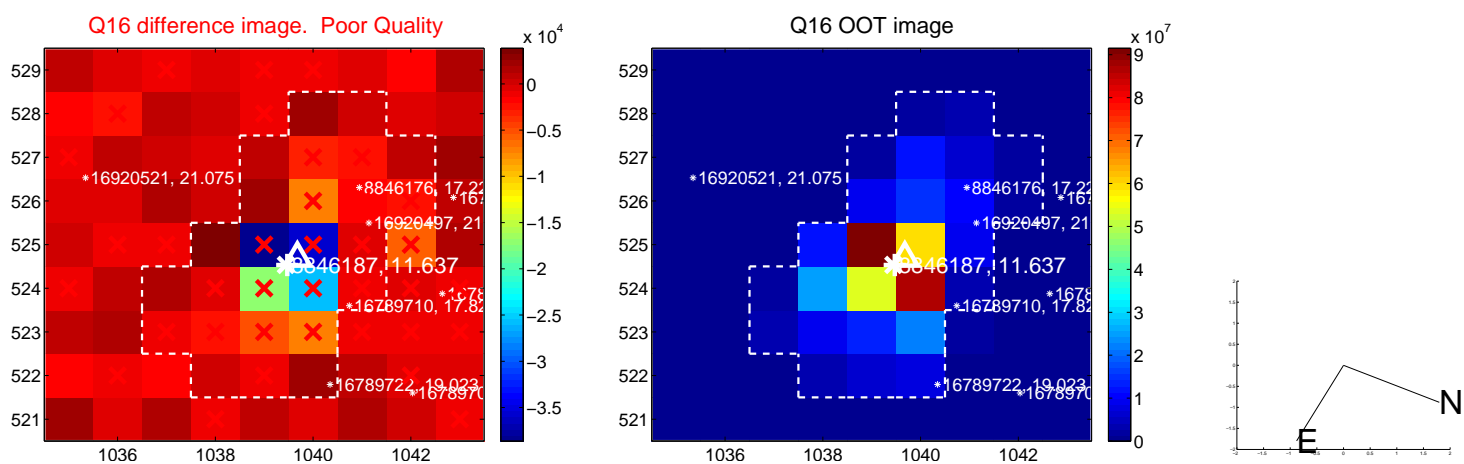
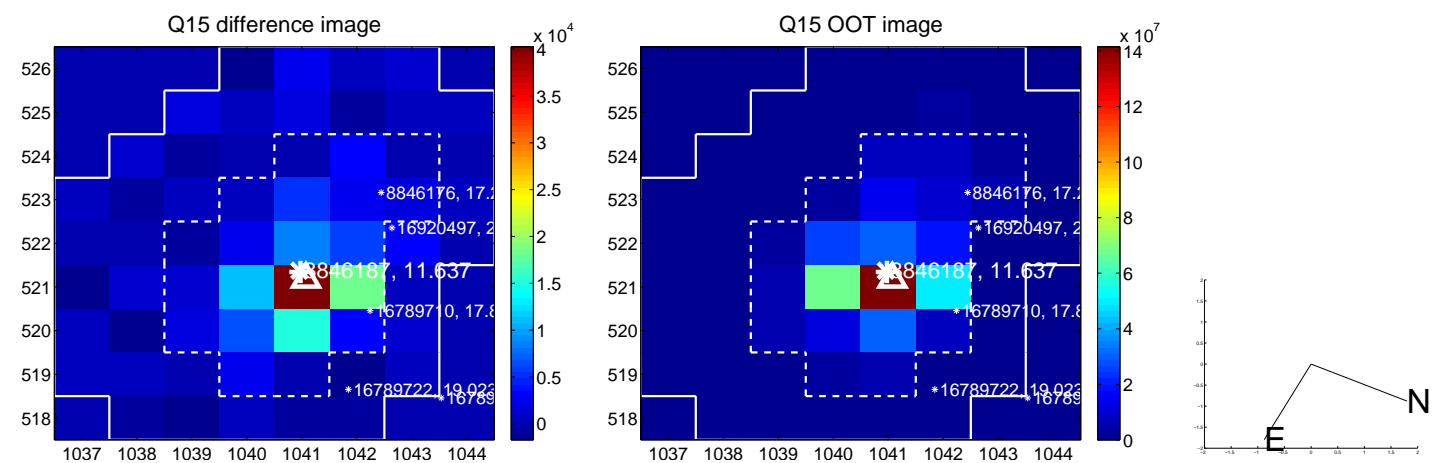
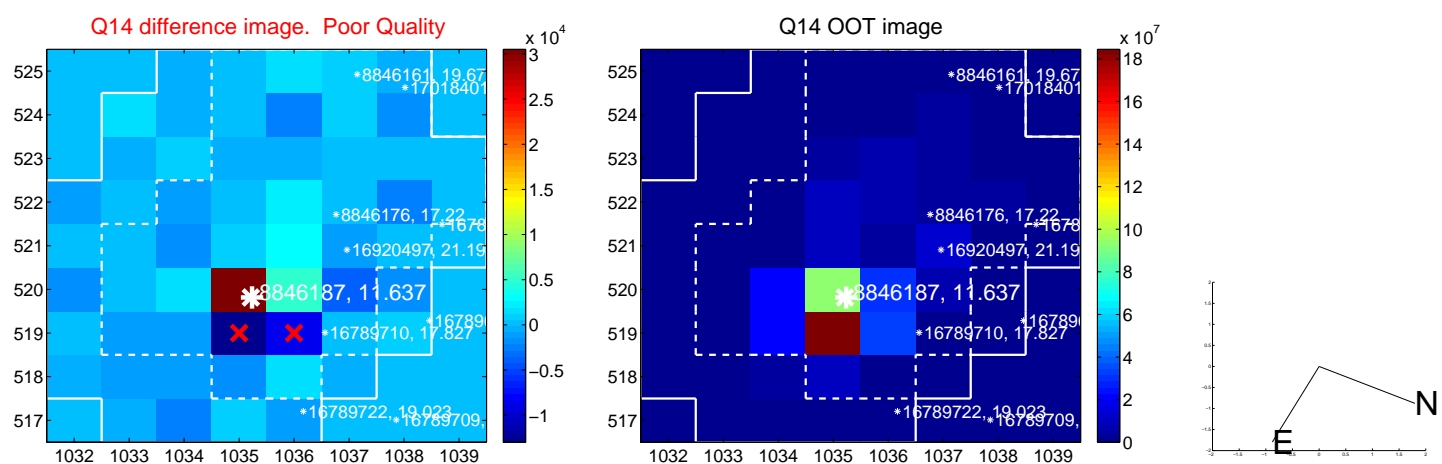
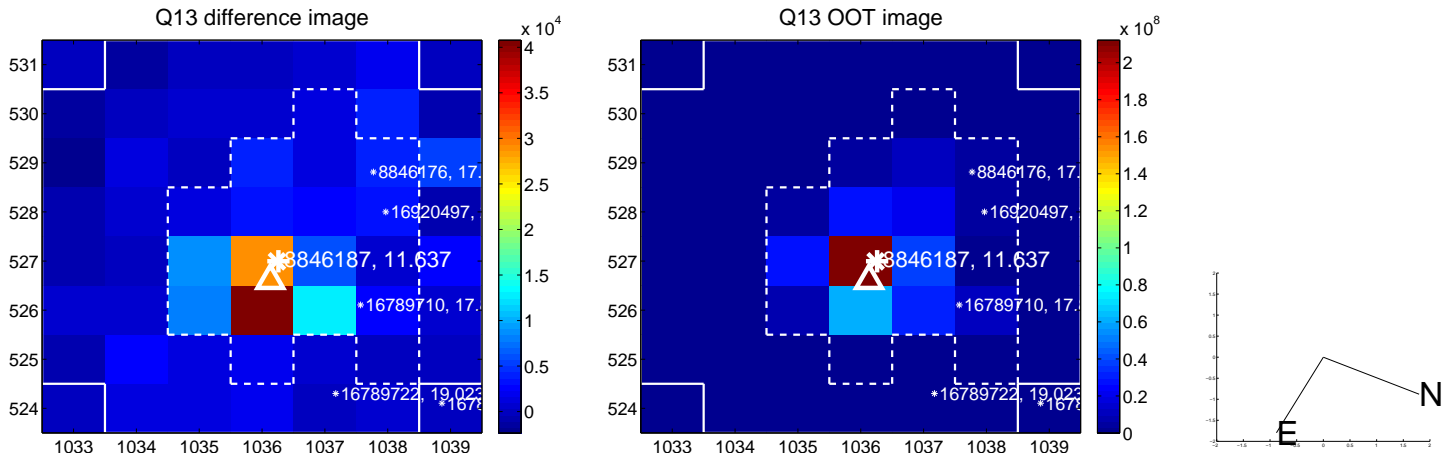
white \times : KIC target position; +: OOT centroid; \triangle : difference centroid. red \times : large negative pixel value.



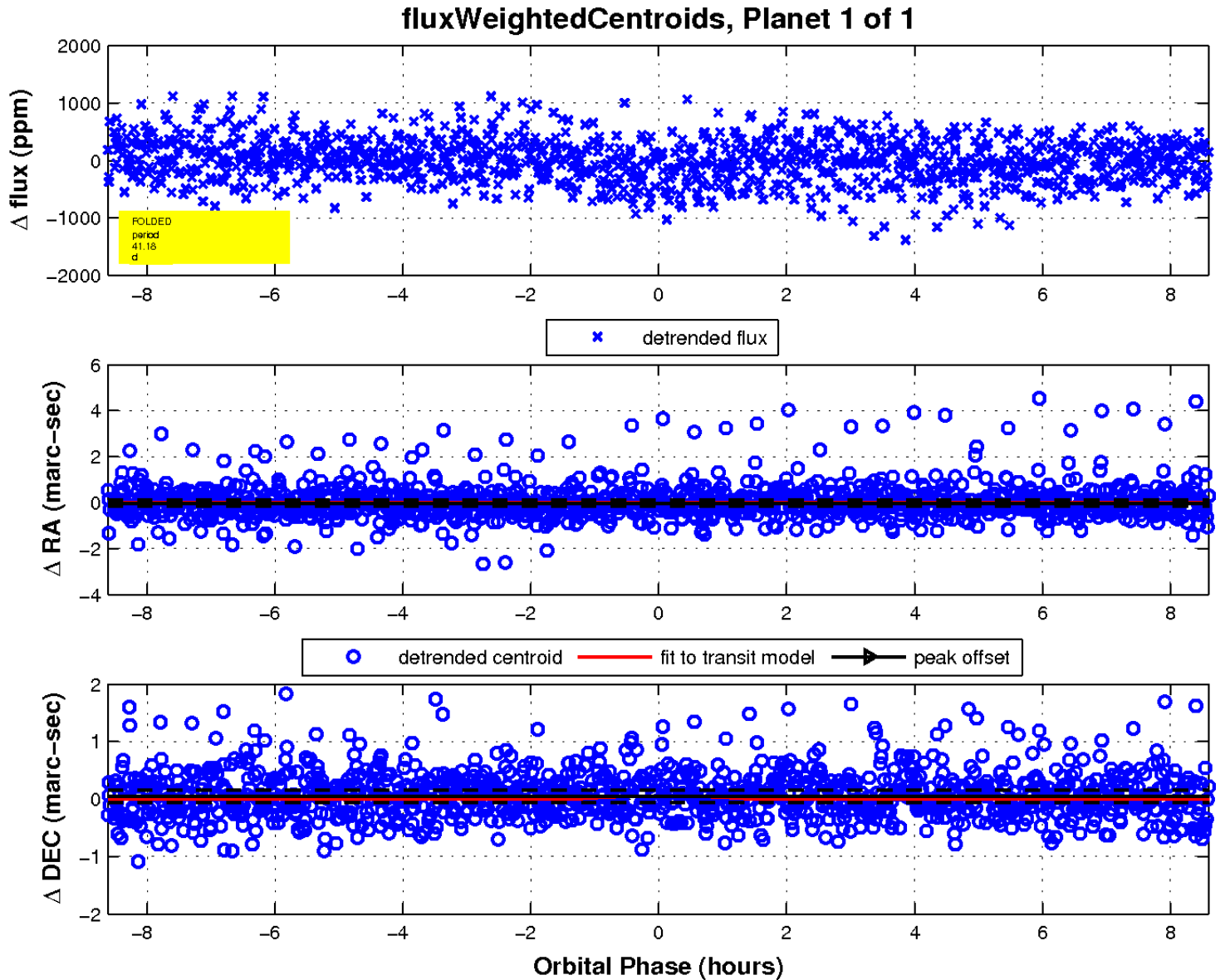
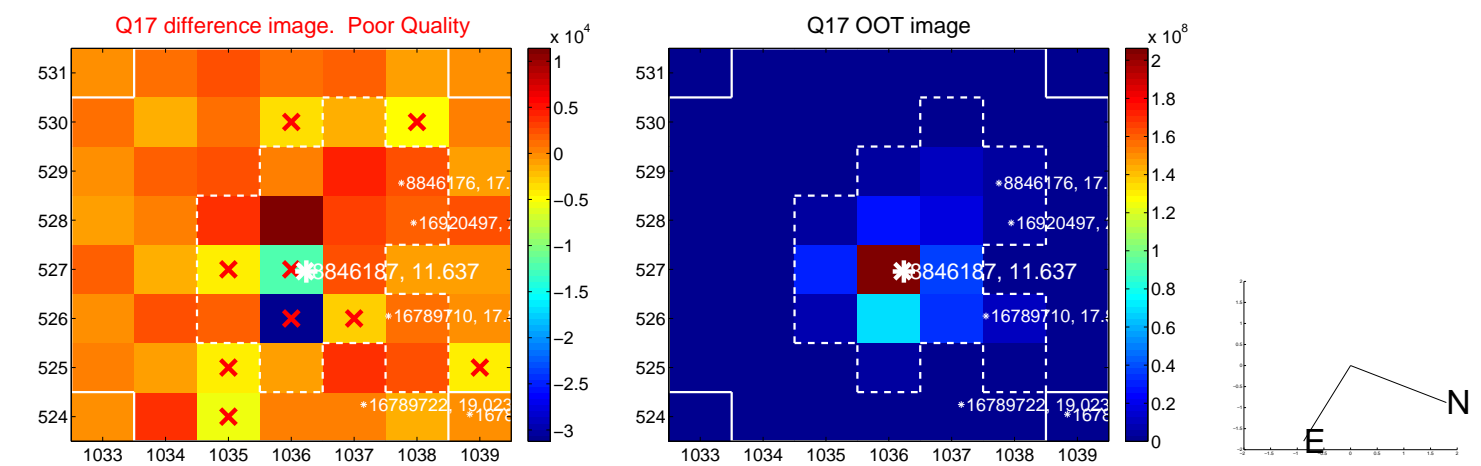
white \times : KIC target position; +: OOT centroid; \triangle : difference centroid. red \times : large negative pixel value.



white \times : KIC target position; $+$: OOT centroid; \triangle : difference centroid. red \times : large negative pixel value.



white \times : KIC target position; $+$: OOT centroid; \triangle : difference centroid. red \times : large negative pixel value.



UKIRT Image

