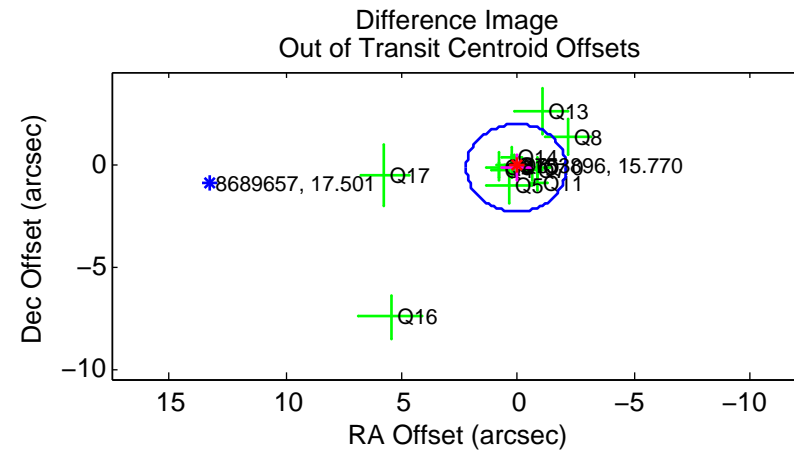
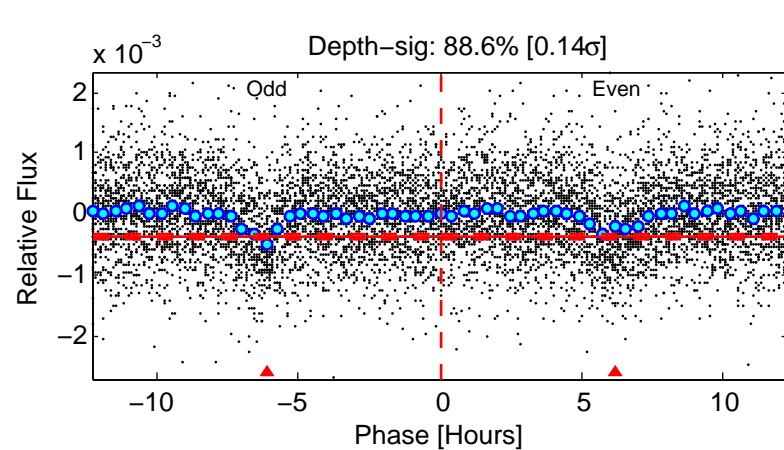
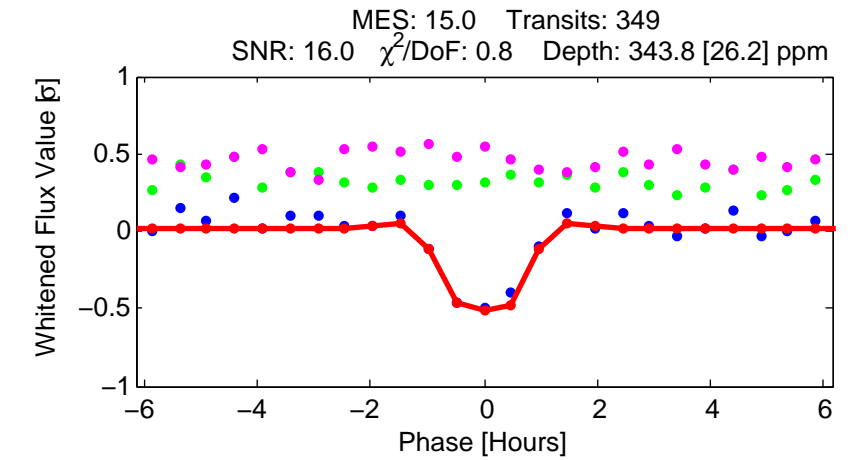
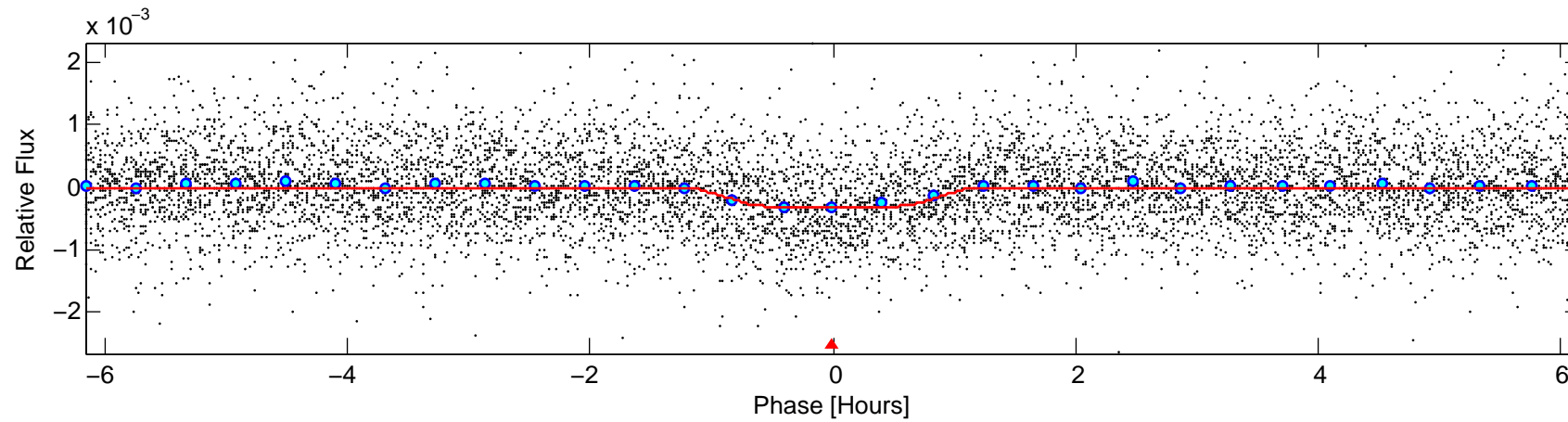
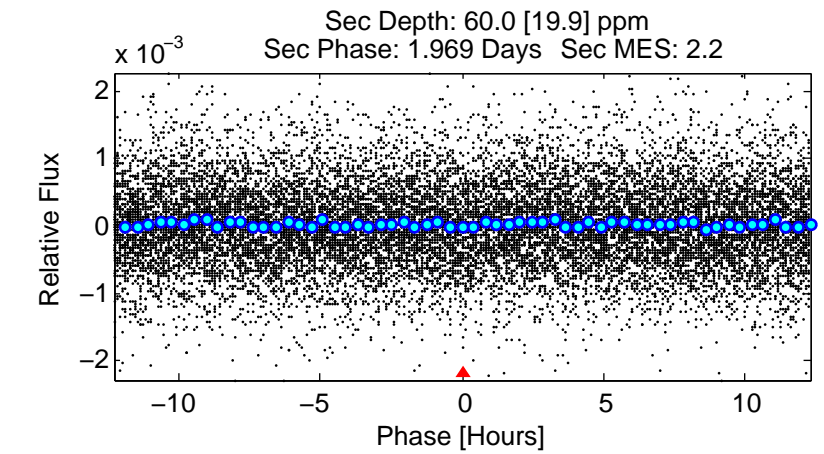
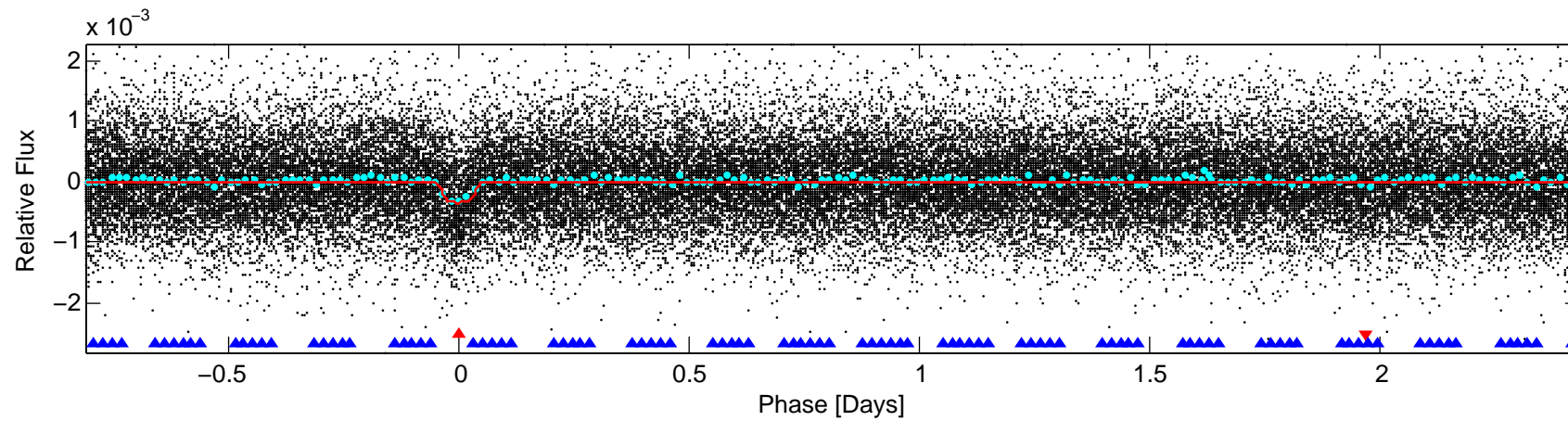
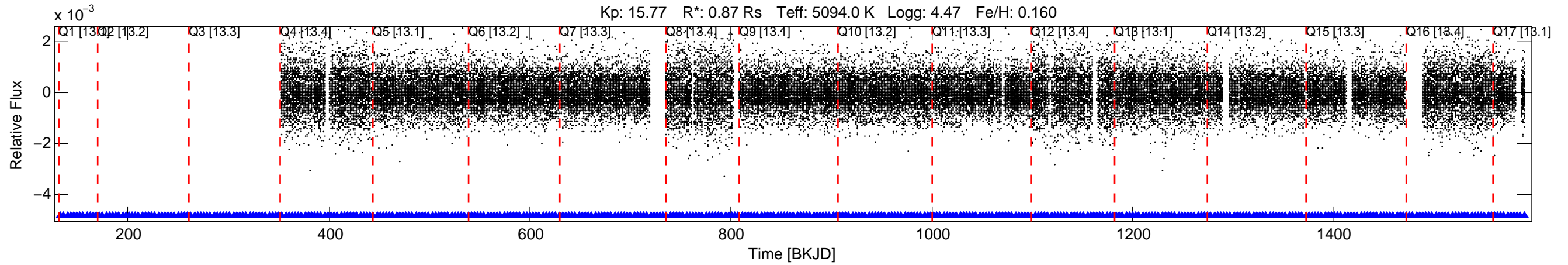


KIC: 8753896 Candidate: 1 of 2 Period: 3.244 d
 KOI: K02473.01 Name: Kepler-389b Corr: 0.933



DV Fit Results:

Period = 3.24412 [0.00001] d
 Epoch = 132.9564 [0.0022] BKJD
 Rp/R* = 0.0206 [0.0095]
 a/R* = 5.97 [10.52]
 b = 0.90 [0.41]
 Seff = 284.89 [48.57]
 Teq = 1048 [45] K
 Rp = 1.96 [0.91] Re
 a = 0.0400 [0.0037] AU
 Ag = 13.81 [13.66] [0.94σ]
 Teffp = 3122 [764] K [2.71σ]

DV Diagnostic Results:

ShortPeriod-sig: N/A
 LongPeriod-sig: 100.0% [60.72σ]
 ModelChiSquare2-sig: N/A
 ModelChiSquareGof-sig: N/A
 Bootstrap-pfa: 7.46e-50
 RollingBand-fgt: 1.00 [341/341]
 GhostDiagnostic-chr: 3.653
 Centroid-sig: 2.0%
 Centroid-so: 1.083 arcsec [1.39σ]
 OotOffset-rm: 0.211 arcsec [0.30σ]
 KicOffset-rm: 0.161 arcsec [0.20σ]
 OotOffset-st: 3/3/3/4 [13]
 KicOffset-st: 3/3/3/4 [13]
 DiffImageQuality-fgm: 0.77 [10/13]
 DiffImageOverlap-fno: 1.00 [14/14]