

KIC 008751641

Q1-17 DR25 TCE Parameters

TCE	Run Type	KOI?	Period (Days)	Epoch (BKJD)	Depth (ppm)	Duration (Hours)	MES	SNR	R_{\star} (R_{\odot})	T_{\star} (K)	R_p (R_{\oplus})	S_p (S_{\oplus})
008751641-01	OBS	No	375.112937	138.126976	242.0	24.065	7.5	8.0	1.00	6054	1.64	1.10

Robovetter Results

TCE	Run Type	Disp	Score	N	S	C	E	Comments
008751641-01	OBS	FP	0.00	1	0	0	1	INDIV_TRANS_MARSHALL_SKYE—CENT_FEW_DIFFS—EPHEM_MATCH

Notes: OBS = Observed. INJ = Injected. INV = Inverted. SCR = Scrambled.

N = Not Transit-Like. S = Stellar Eclipse. C = Centroid Offset. E = Ephemeris Match.

See http://exoplanetarchive.ipac.caltech.edu/docs/API_kepcandidate_columns.html#proj_disp_col for comment definitions.

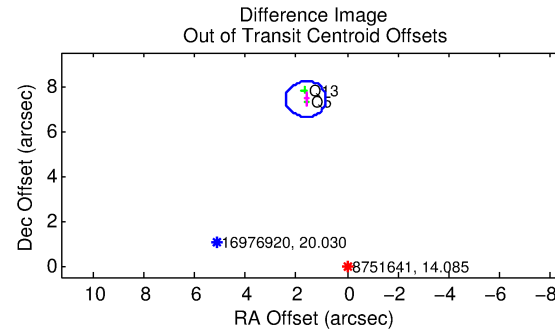
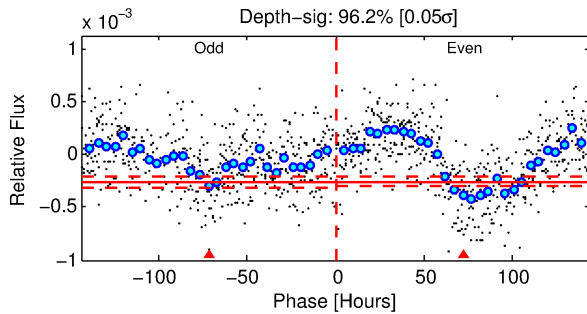
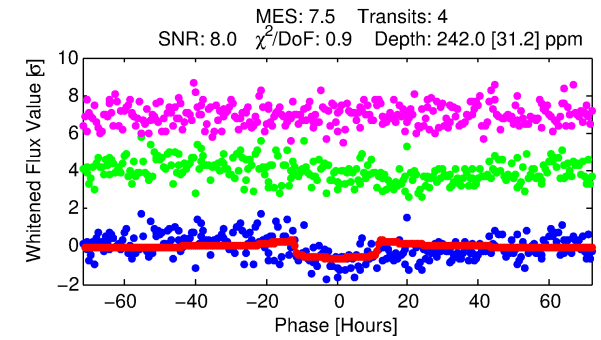
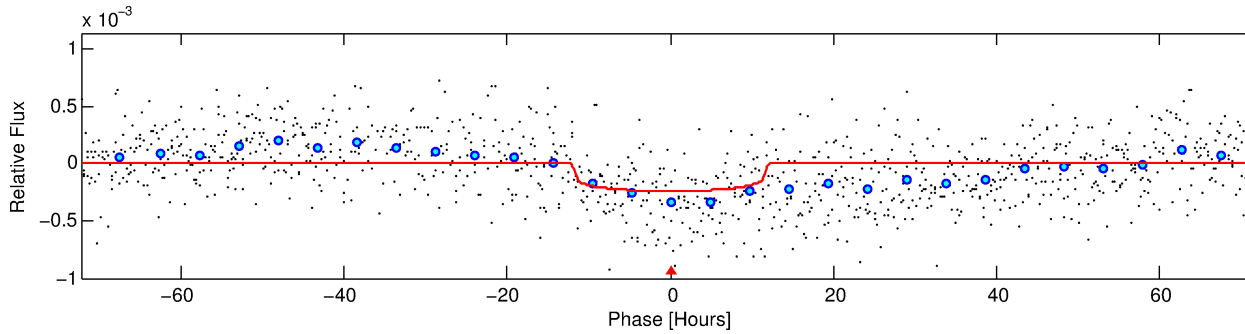
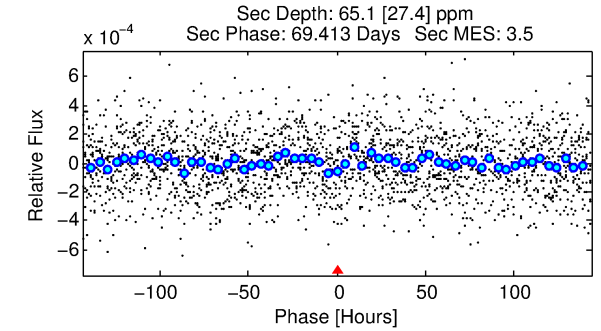
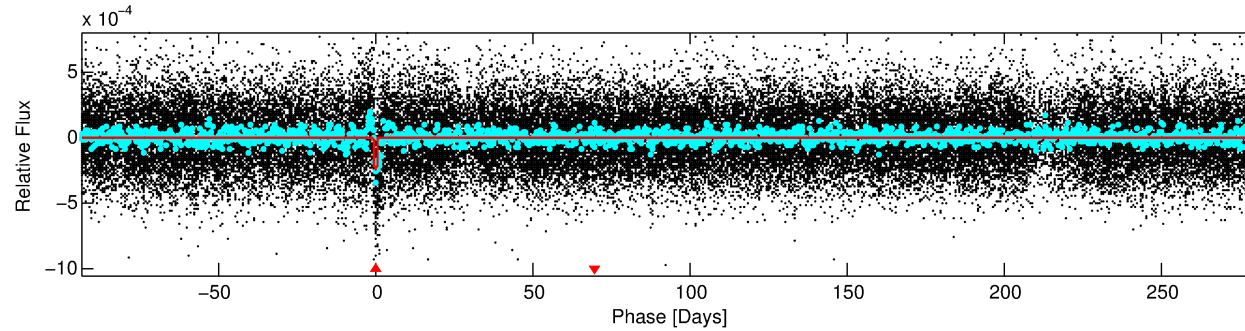
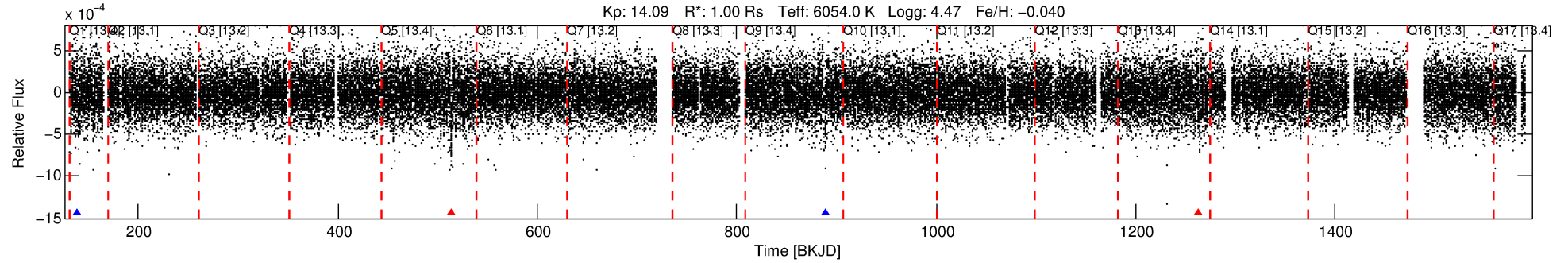
Ephemeris Match Information For 008751641-01

TCE (1)	KIC	Parent (2)	Parent KIC	$P_1:P_2$	Dist ($''$)	Δ Row	Δ Col	m_2	m_1	D_2/D_1	Mechanism	Flag	σ_P	σ_T
008751641-01	8751641	008621528-01	8621528	1:1	1526.7	-384	4	15.99	14.08	12.36	Col-Anomaly	1	2.02	0.97

Notes: $P_1:P_2$ is the period ratio. Dist is the distance in arcseconds. Δ Row and Δ Col are the number of pixels apart in row and column. m_2 and m_1 are the magnitudes of the parent and child. D_2/D_1 is the parent's transit depth divided by the child's. σ_P and σ_T are the significance of the match in period and epoch. For a match to be considered significant $\sigma_P < 5.0$ and $\sigma_T < 5.0$. Matches which have σ_P and σ_T very close to this cutoff should receive extra scrutiny, especially if the period ratio is very large.

DV One-Page Summary

KIC: 8751641 Candidate: 1 of 1 Period: 375.113 d



DV Fit Results:

Period = 375.11294 [0.01383] d
Epoch = 138.1270 [0.0272] BKJD
Rp/R* = 0.0151 [0.0045]
a/R* = 91.03 [125.63]
b = 0.67 [1.15]
Seff = 1.10 [0.46]
Teq = 261 [27] K
Rp = 1.64 [0.73] Re
a = 1.0407 [0.2891] AU
Ag = 14410.69 [11929.71] [1.21σ]
Teffp = 4426 [815] K [5.10σ]

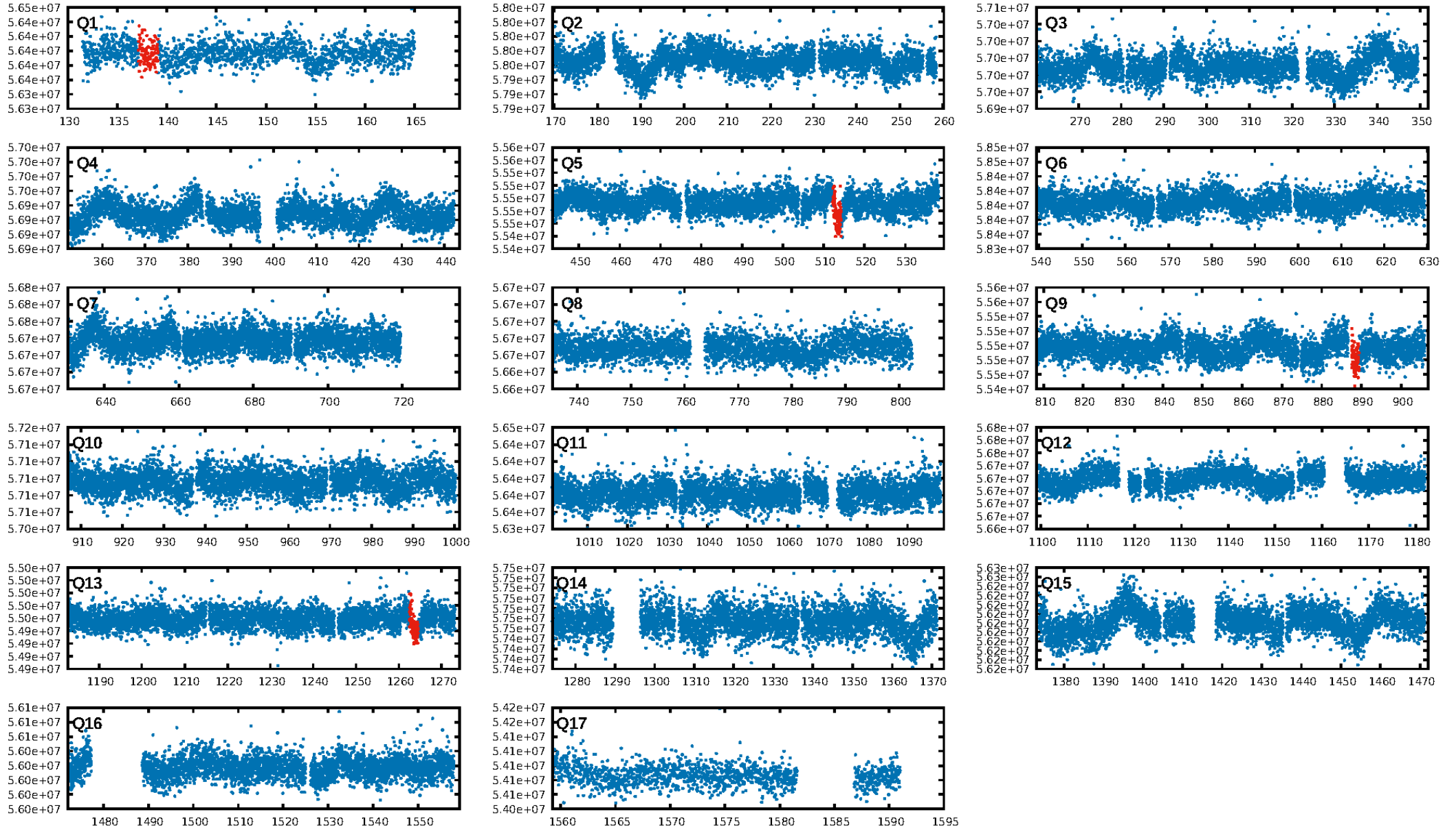
DV Diagnostic Results:

ShortPeriod-sig: N/A
LongPeriod-sig: N/A
ModelChiSquare2-sig: 4.6%
ModelChiSquareGof-sig: 100.0%
Bootstrap-pfa: 3.29e-16
RollingBand-fgt: 0.33 [1/3]
GhostDiagnostic-chr: -0.5721
Centroid-sig: 24.0%
Centroid-so: 1.604 arcsec [0.93σ]
OotOffset-rm: 7.591 arcsec [28.67σ]
KicOffset-rm: 7.486 arcsec [31.62σ]
OotOffset-st: 0/0/0/2 [2]
KicOffset-st: 0/0/0/2 [2]
DiffImageQuality-fgm: 0.00 [0/2]
DiffImageOverlap-fno: 1.00 [3/3]

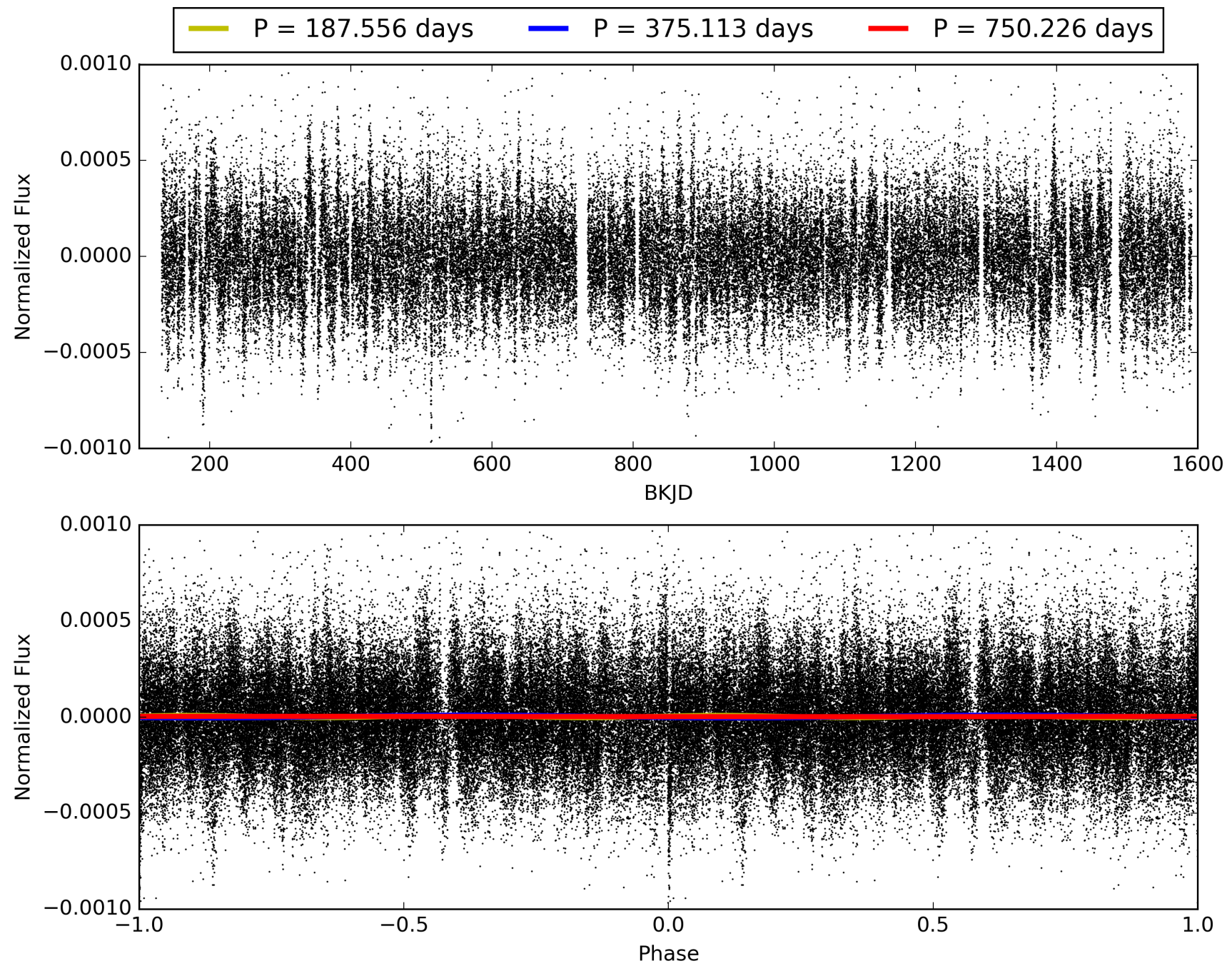
Software Revision: svn+ssh://murzim/repo/soc/tags/release/9.3.42@60958 -- Date Generated: 30-Jan-2016 14:17:21 Z

This Data Validation Report Summary was produced in the Kepler Science Operations Center Pipeline at NASA Ames Research Center

TCE 008751641-01, PDC Light Curves

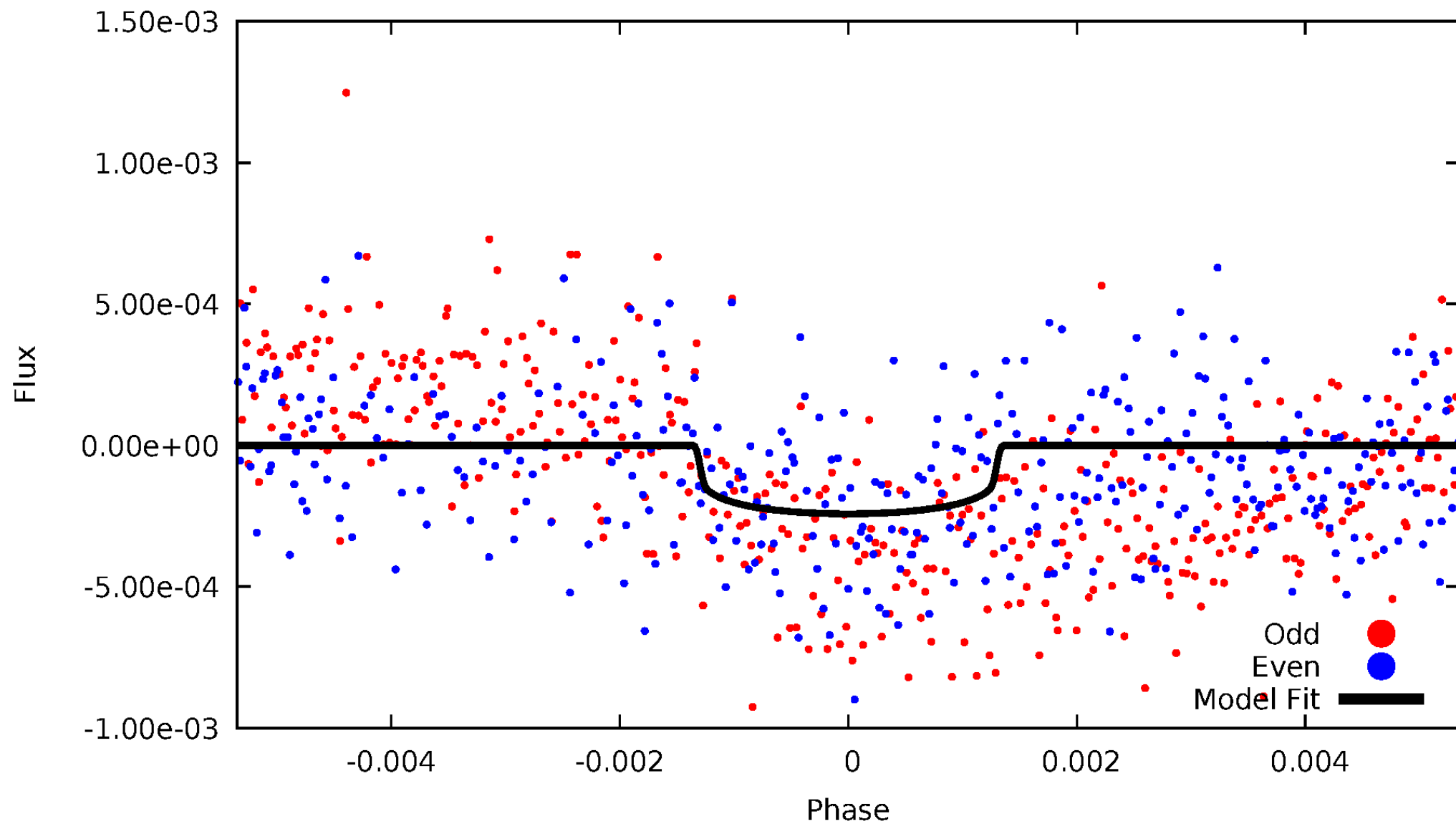


TCE 008751641-01



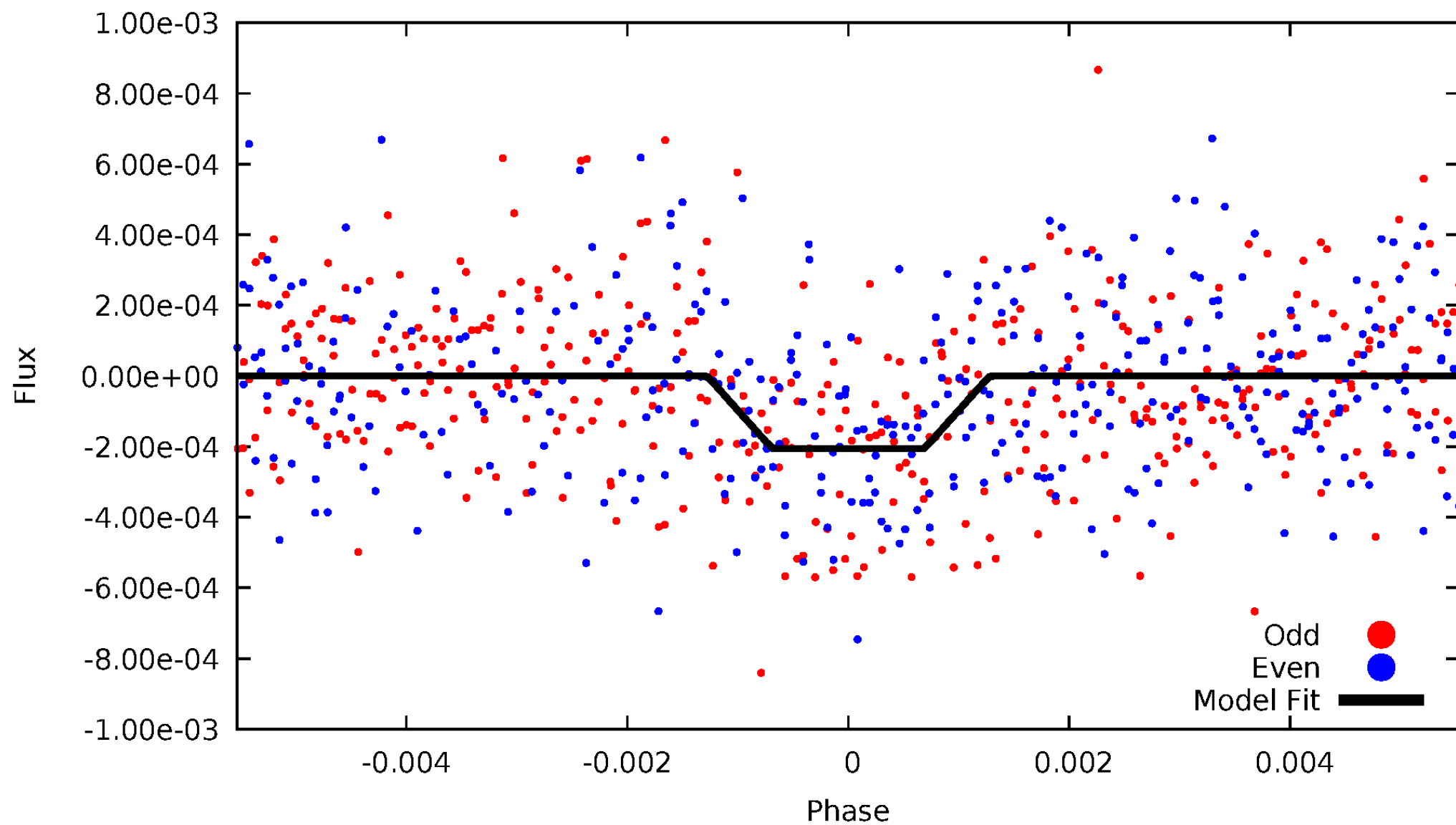
DV Odd/Even

TCE 008751641-01

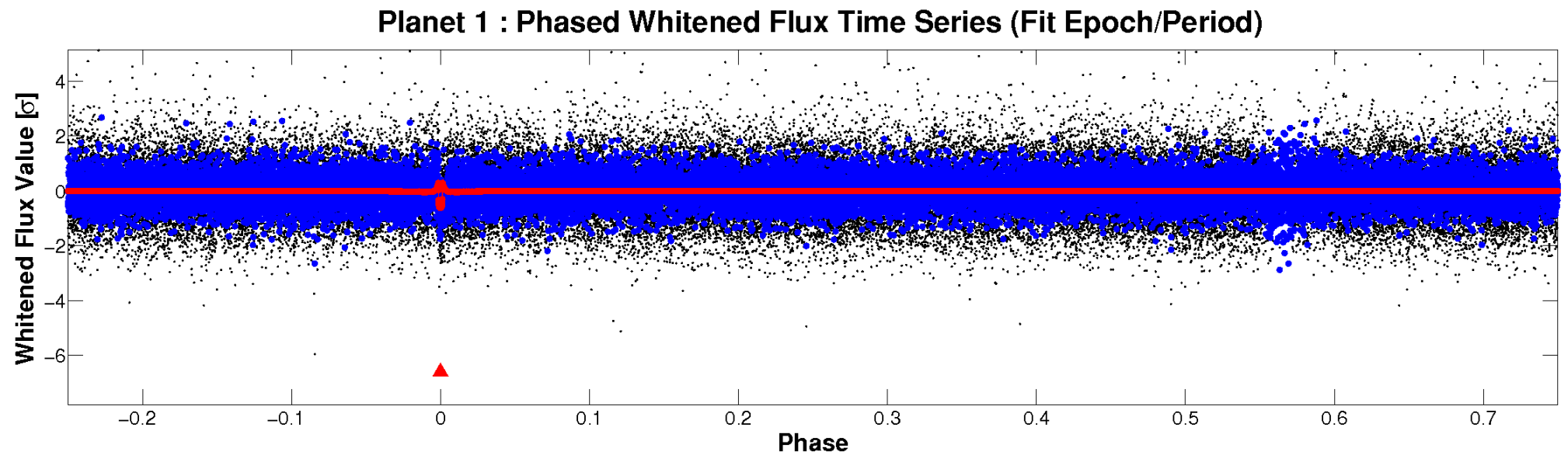
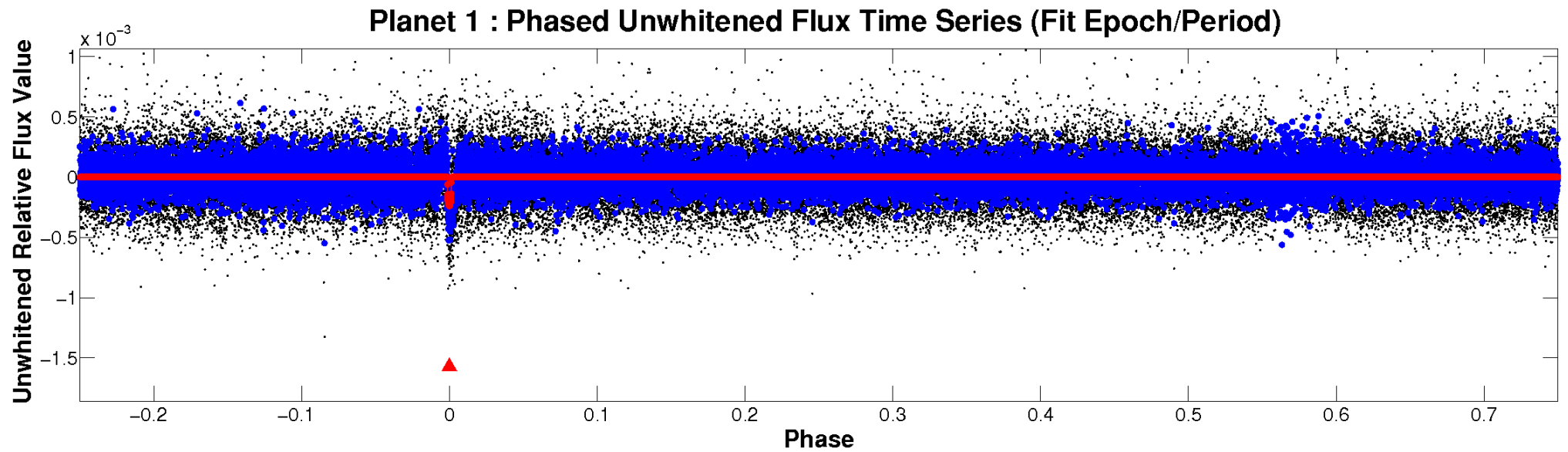


ALT Odd/Even

TCE 008751641-01

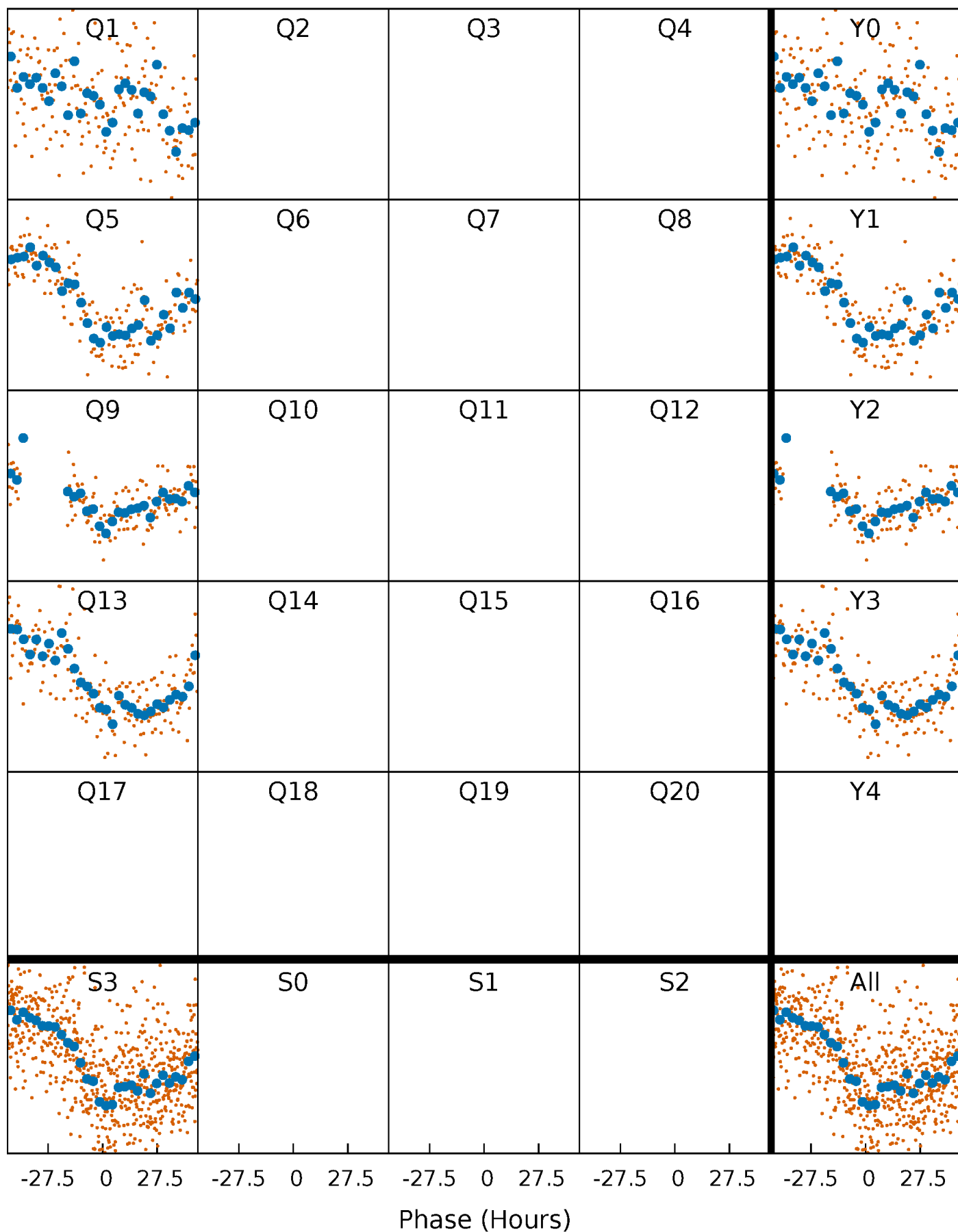


Non-Whitened Vs. Whitened Light Curve



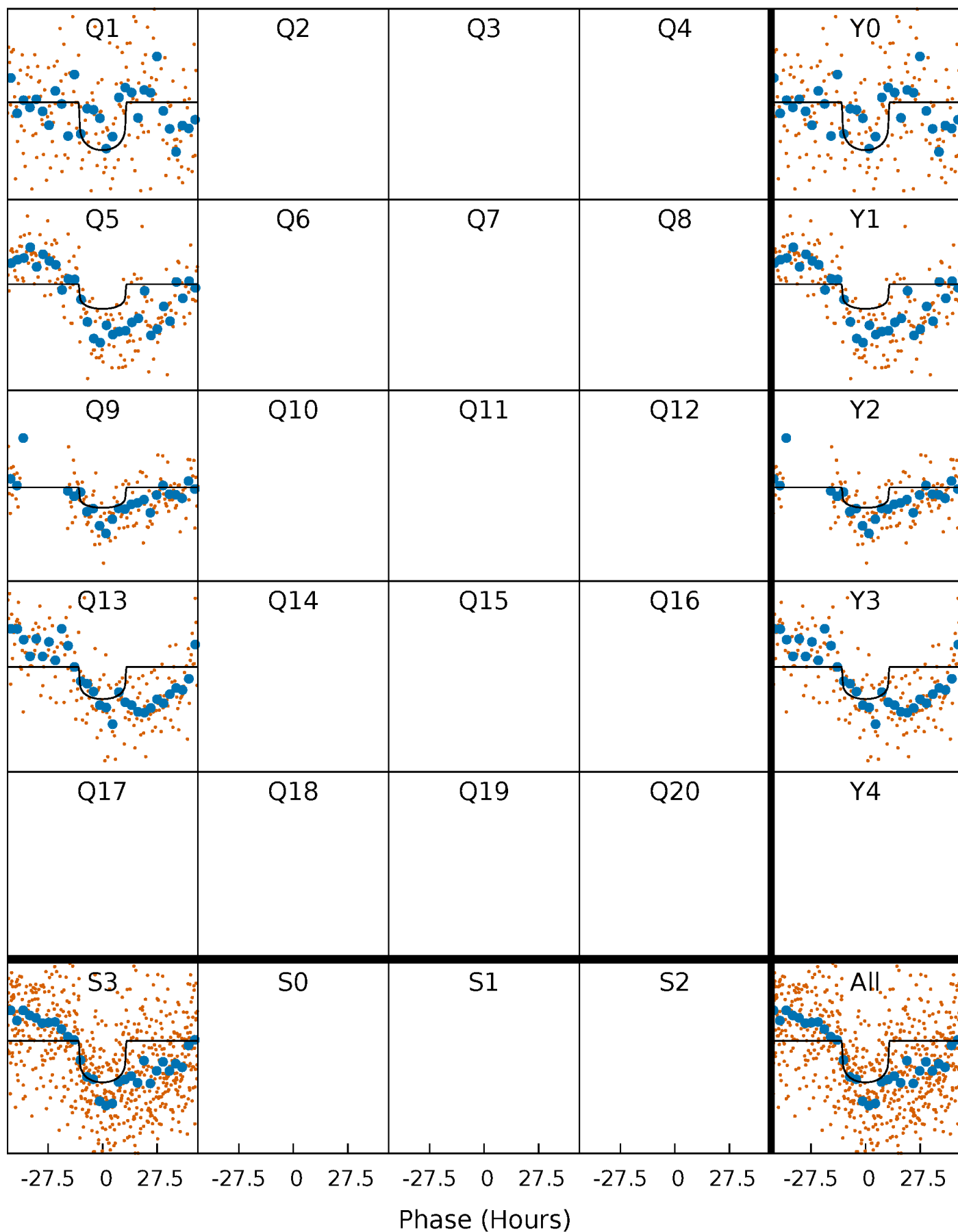
PDC Quarter-Phased Transit Curves

TCE 008751641-01 P=375.112937 Days $T_0=138.126976$ (BKJD)



DV Quarter-Phased Transit Curves

TCE 008751641-01 P=375.112937 Days $T_0=138.126976$ (BKJD)



Alt. Detrend Quarter-Phased Transit Curves

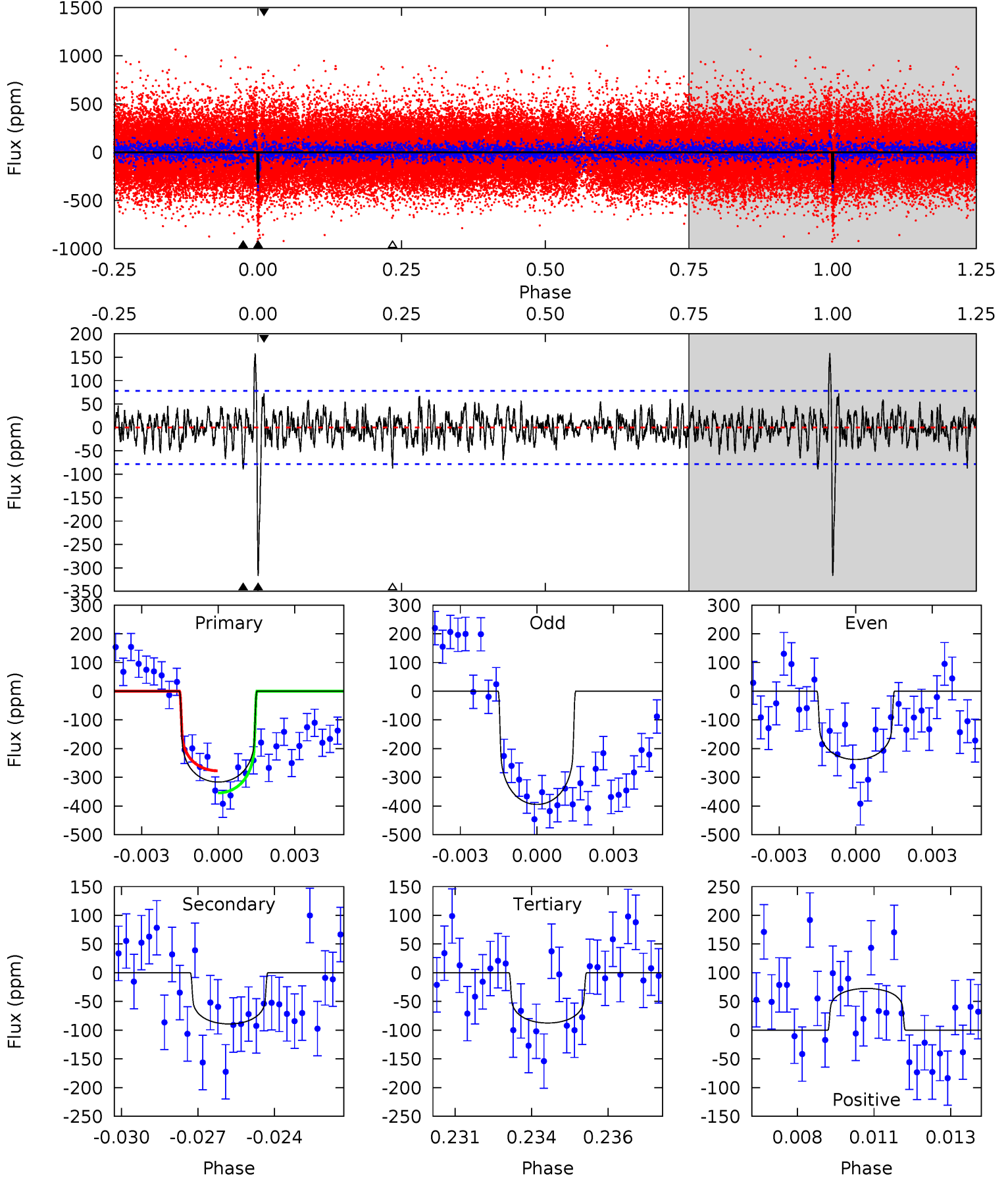
TCE 008751641-01 P=375.119295 Days $T_0=138.103458$ (BKJD)



DV Model-Shift Uniqueness Test

008751641-01, P = 375.112937 Days, E = 138.126976 Days

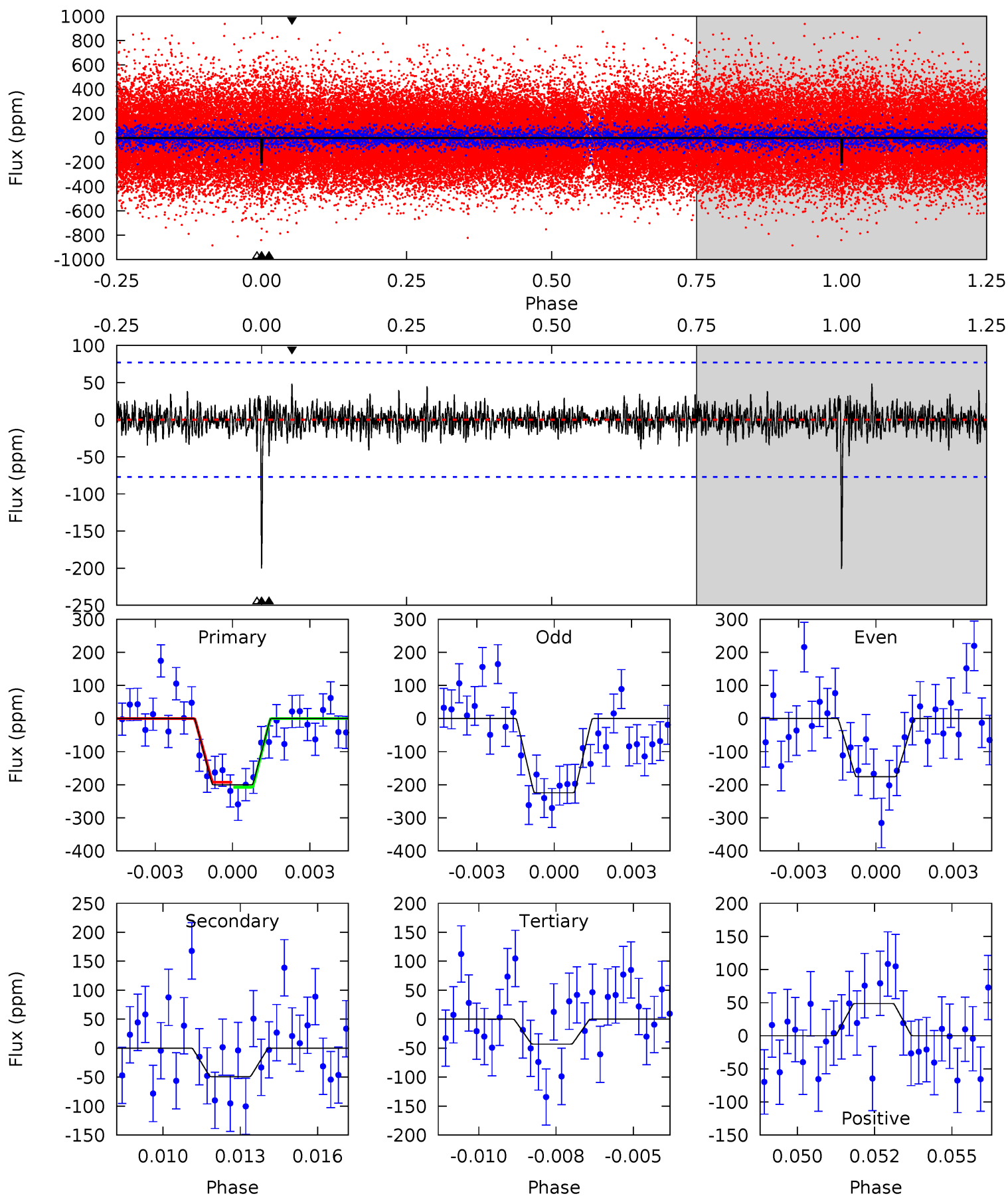
Pri	Sec	Ter	Pos	FA ₁	FA ₂	F _{Red}	Pri-Ter	Pri-Pos	Sec-Ter	Sec-Pos	Odd-Evn	DMM	Shape	TAT
21.3	6.01	5.91	4.90	5.27	3.00	1.71	15.4	16.4	0.11	1.11	5.28	0.98	0.33	2.59



Alt Model-Shift Uniqueness Test

008751641-01, P = 375.119295 Days, E = 138.103458 Days

Pri	Sec	Ter	Pos	FA ₁	FA ₂	F _{Red}	Pri-Ter	Pri-Pos	Sec-Ter	Sec-Pos	Odd-Evn	DMM	Shape	TAT
13.7	3.37	2.95	3.32	5.28	3.01	0.81	10.8	10.4	0.42	0.04	1.66	1.13	0.20	0.50



Stellar Parameters For KIC 008751641

	$T_{\text{eff}}(K)$	$\log(g)$	[Fe/H]	$R (R_{\odot})$	$M(M_{\odot})$	$p_{\star} (\text{g}\cdot\text{cm}^{-3})$
	6054^{+163}_{-199}	$4.470^{+0.054}_{-0.216}$	$-0.040^{+0.250}_{-0.300}$	$0.996^{+0.333}_{-0.111}$	$1.067^{+0.147}_{-0.134}$	$1.520^{+0.438}_{-0.810}$
	+3%/-3%	+1%/-5%	+625%/-750%	+33%/-11%	+14%/-13%	+29%/-53%
Source	PHO1	KIC0	KIC0	DSEP		

KIC = Kepler Input Catalog; PHO = Photometry; SPE = Spectroscopy; AST = Asteroseismology
 TRA = Transits; DESP = Dartmouth Models; MULT = Multiple Models

Secondary Eclipse Parameters for KIC 008751641-01 / KOI

Detrend	Depth (ppm)	$R_p (R_{\oplus})$	$T_{max} (K)$	$T_{obs} (K)$	A_{obs}
DV	-89 ± 15	$1.73^{+0.56}_{-0.53}$	374^{+30}_{-19}	4887^{+868}_{-533}	17394^{+19652}_{-8092}
Alt.	-49 ± 15	$1.68^{+0.56}_{-0.54}$	373^{+28}_{-19}	4375^{+800}_{-471}	9922^{+13001}_{-5014}

T_{max} = Theoretical Maximum Planetary Temperature

T_{obs} = Observed Planetary Temperature (Assuming A=0.3)

A_{obs} = Observed Albedo (Assuming T=0)

If a secondary eclipse is present, the system is likely an EB if $T_{obs} \gg T_{max}$ AND $A_{obs} \gg 1.0$

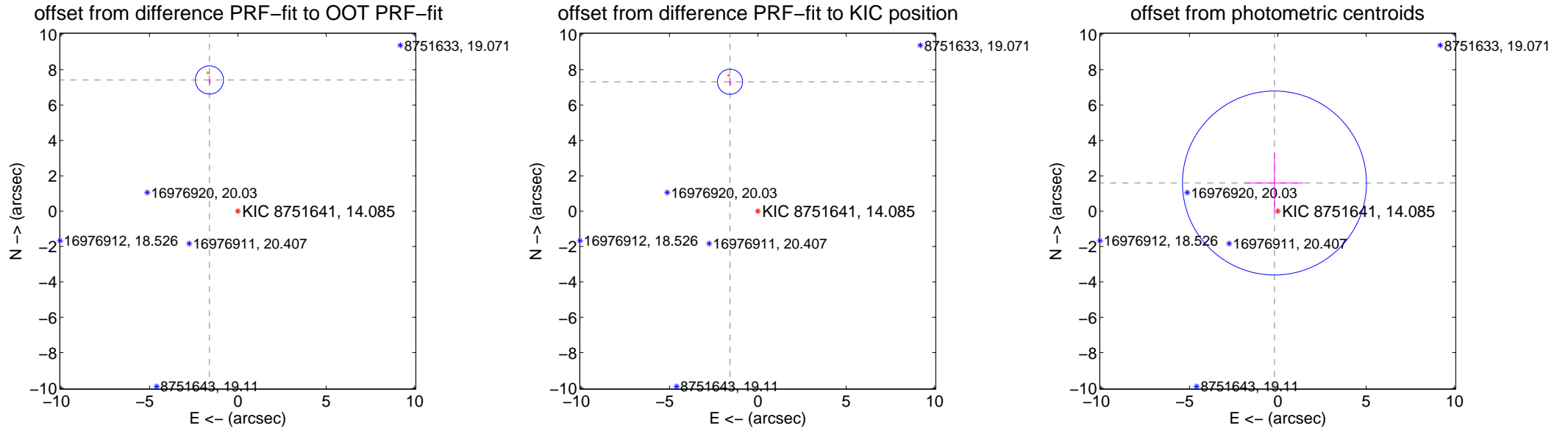
DV Centroid Data

Supplemental centroid analysis for 008751641-01. Kepler magnitude: 14.09. Transit SNR 7.98

There are 0 quarters with good PRF difference image offsets

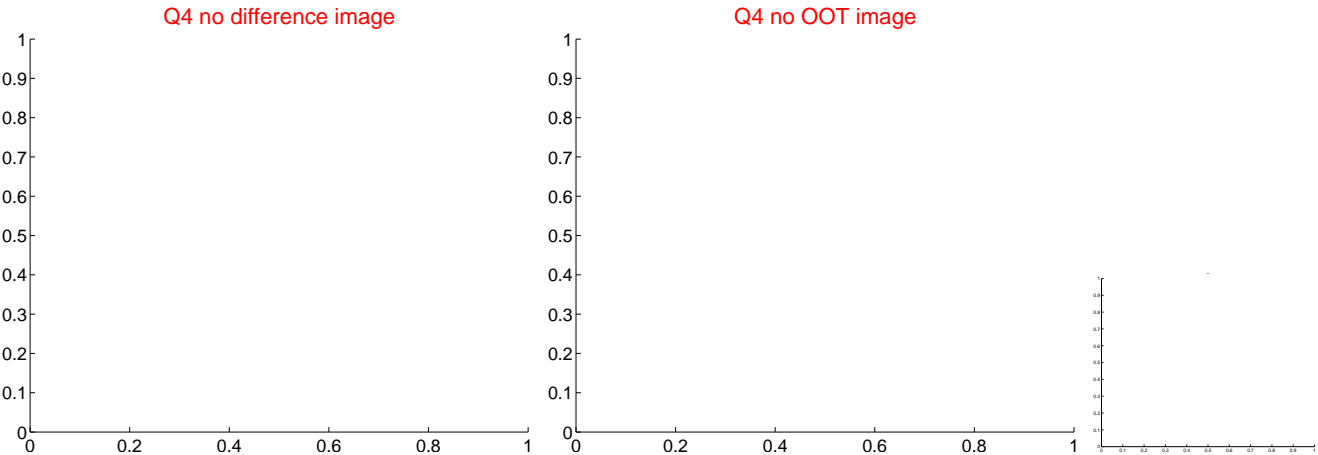
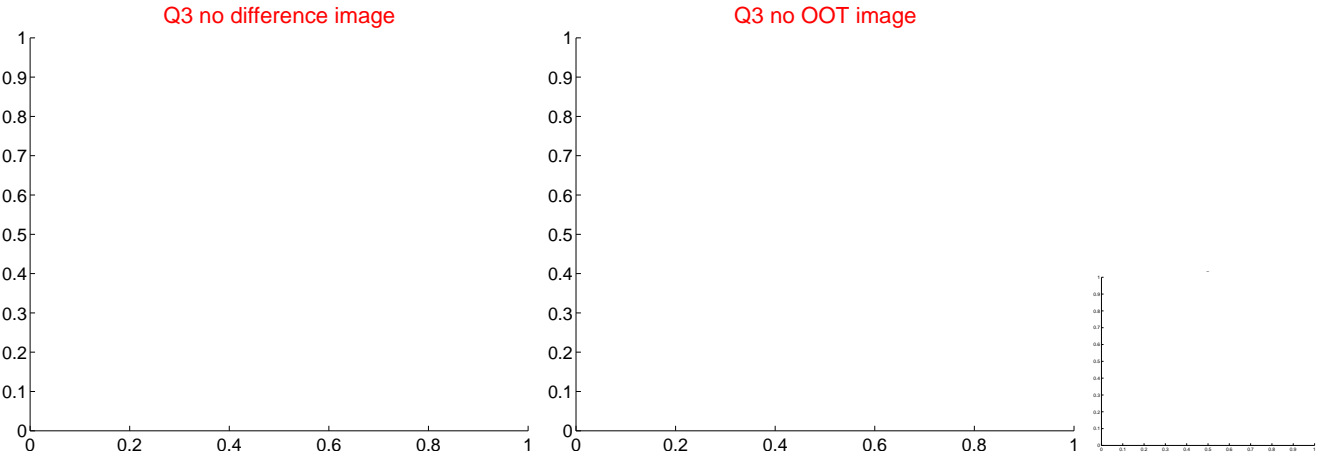
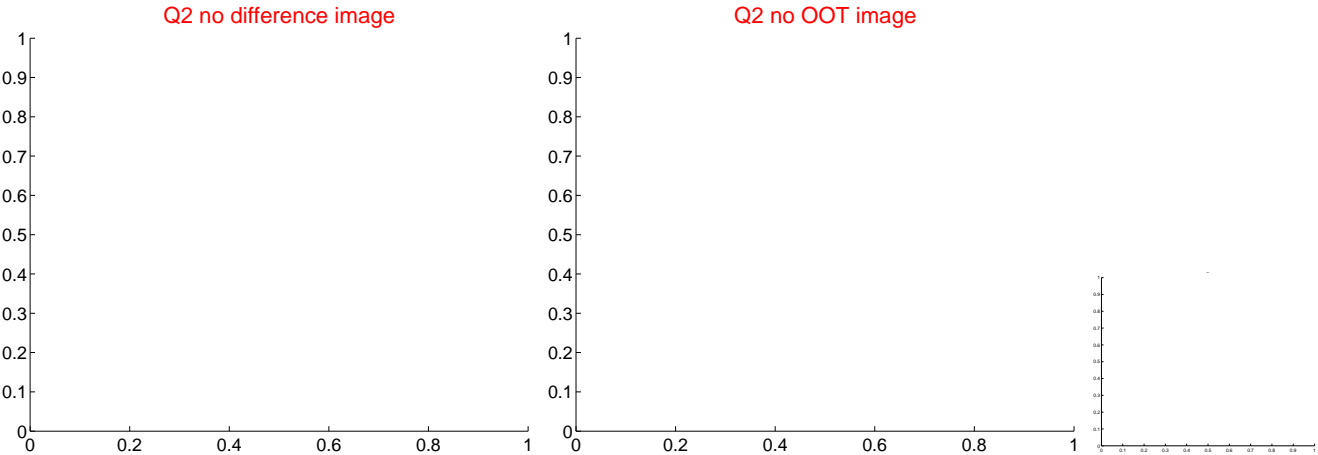
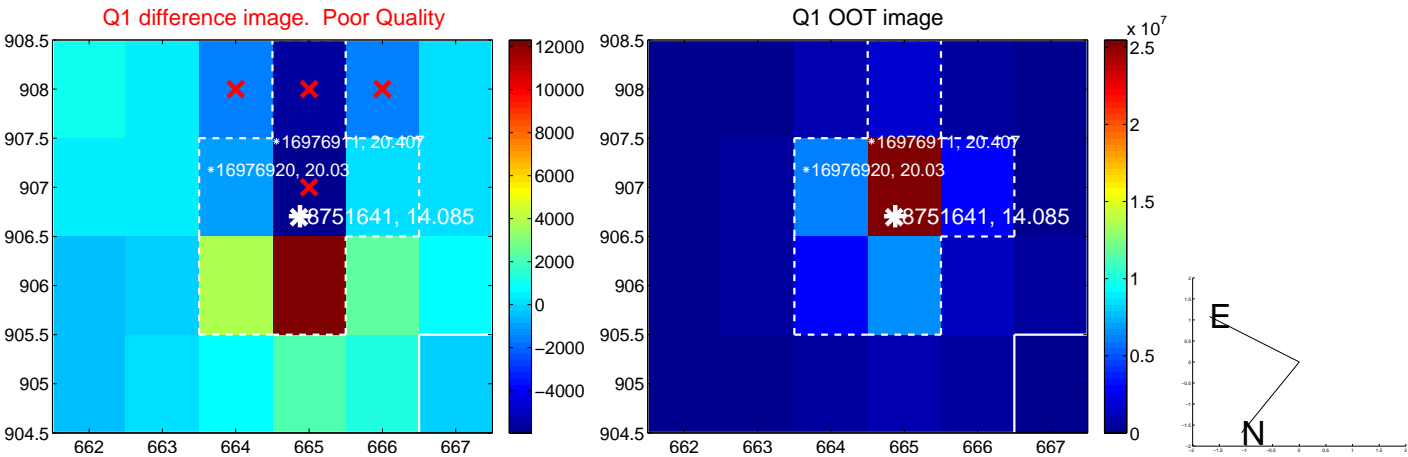
The direct PRF centroid is offset from the target star catalog position by about 0.15 arcsec

	Distance in arcsec	Distance / σ	Δ RA	Δ Dec
PRF-fit source offset from OOT	7.591 \pm 0.265	28.67	1.608 \pm 0.082	7.419 \pm 0.261
PRF-fit source offset from KIC position	7.486 \pm 0.237	31.62	1.573 \pm 0.080	7.319 \pm 0.242
photometric centroid source offset	1.60 \pm 1.73	0.93	0.19 \pm 1.64	1.59 \pm 1.74

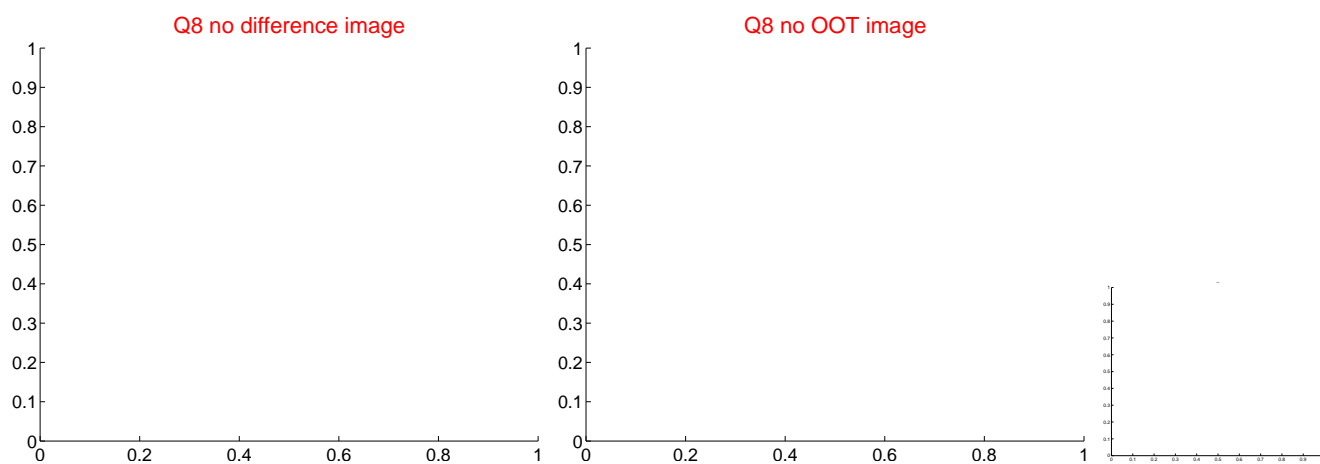
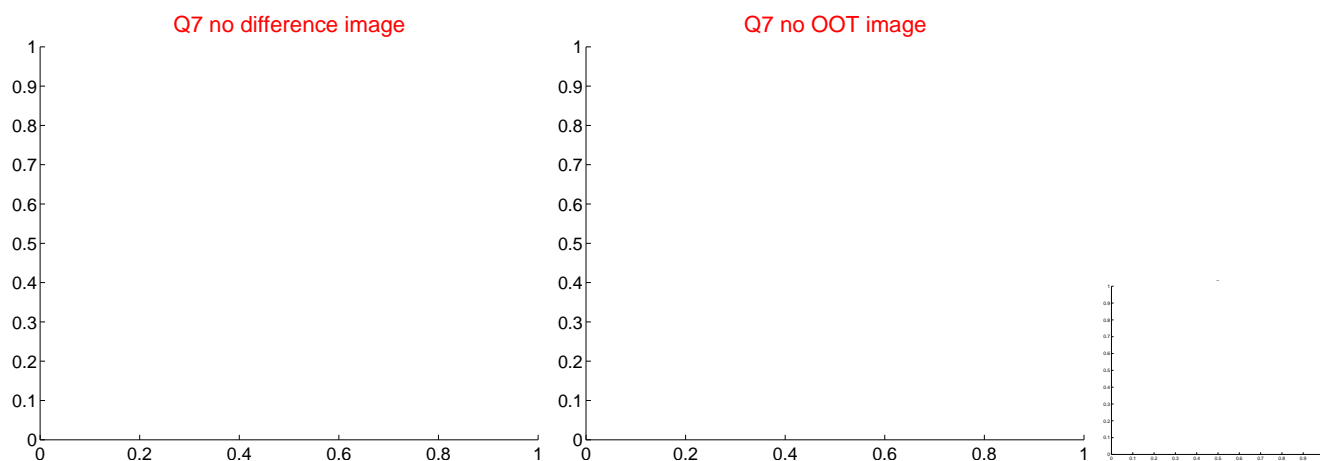
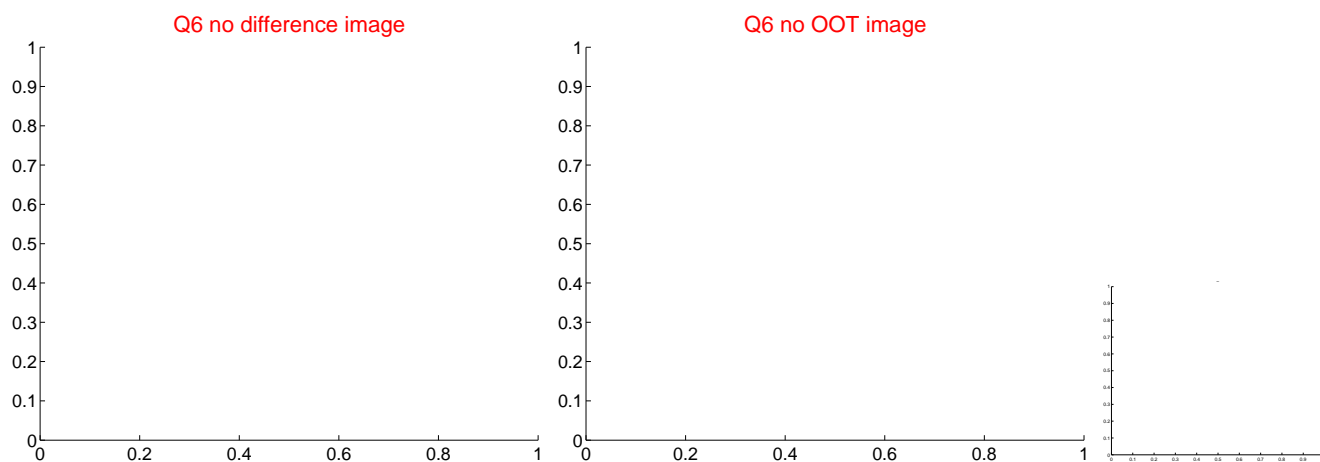
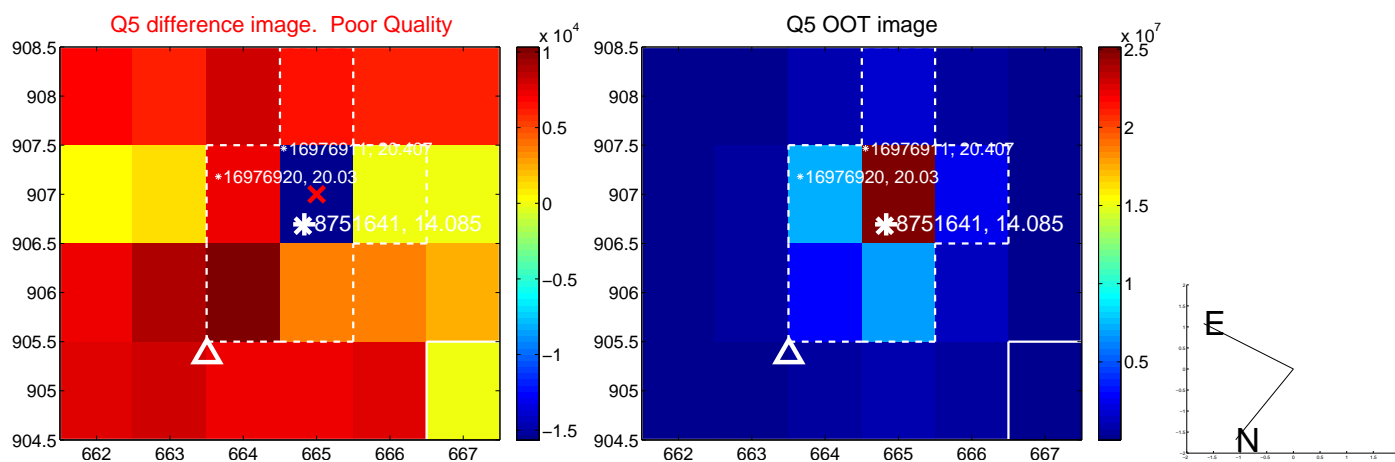


Centroid source offsets from the target star reconstructed from PRF and photometric centroids. Sky blue crosses: good quarterly centroid offsets; Vermillion crosses: bad quarterly centroid offsets; magenta cross: average over quarters. Length of the crosses: one- σ uncertainty. Blue circle: three- σ . Red *: target star. Blue *: Other stars. Text next to a star gives its KIC ID and kepmag. KIC IDs > 15,000,000 are from the UKIRT catalog.

white \times : KIC target position; $+$: OOT centroid; \triangle : difference centroid. red \times : large negative pixel value.



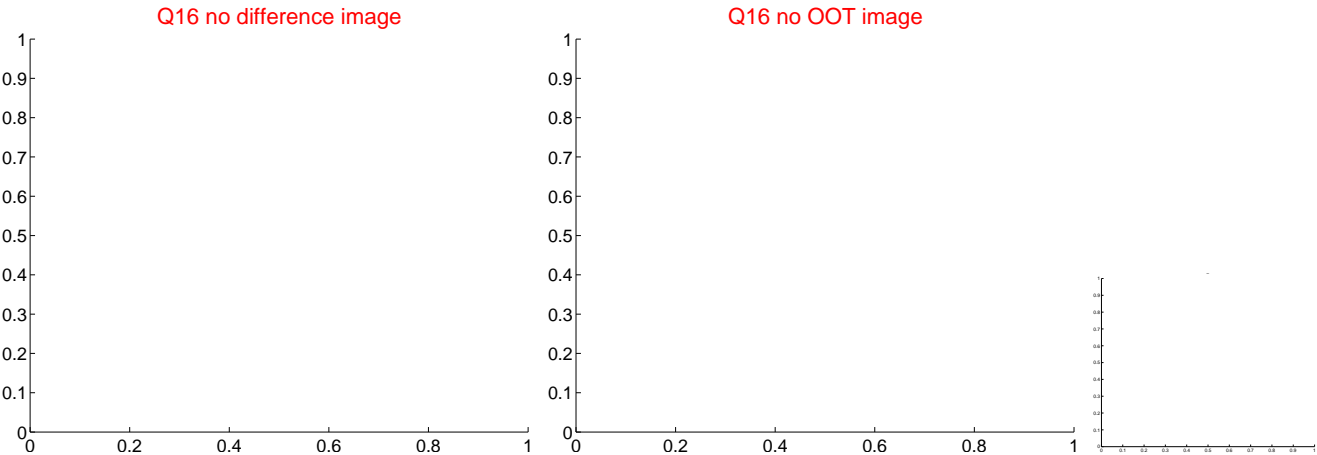
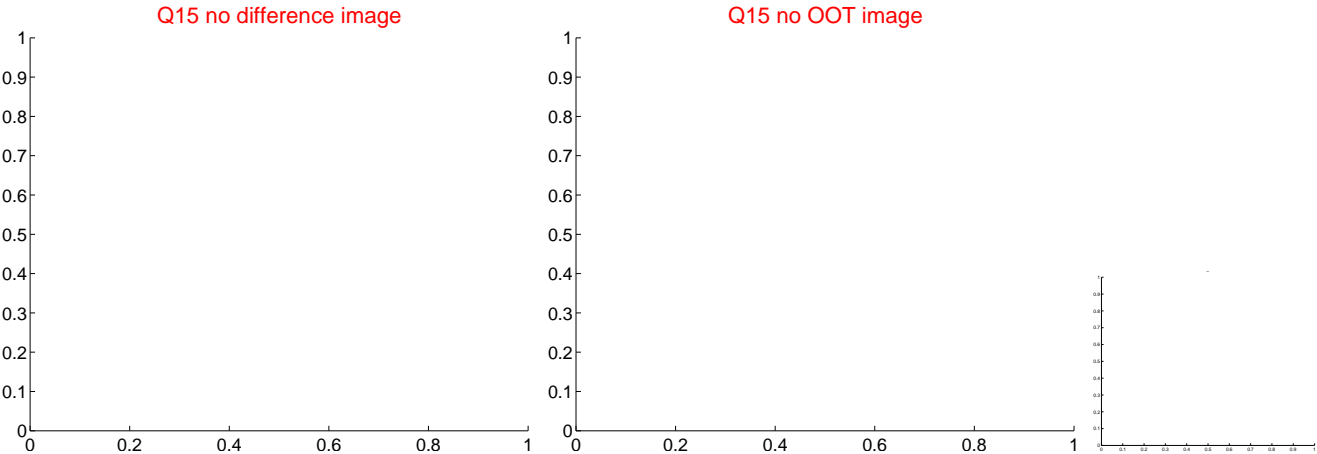
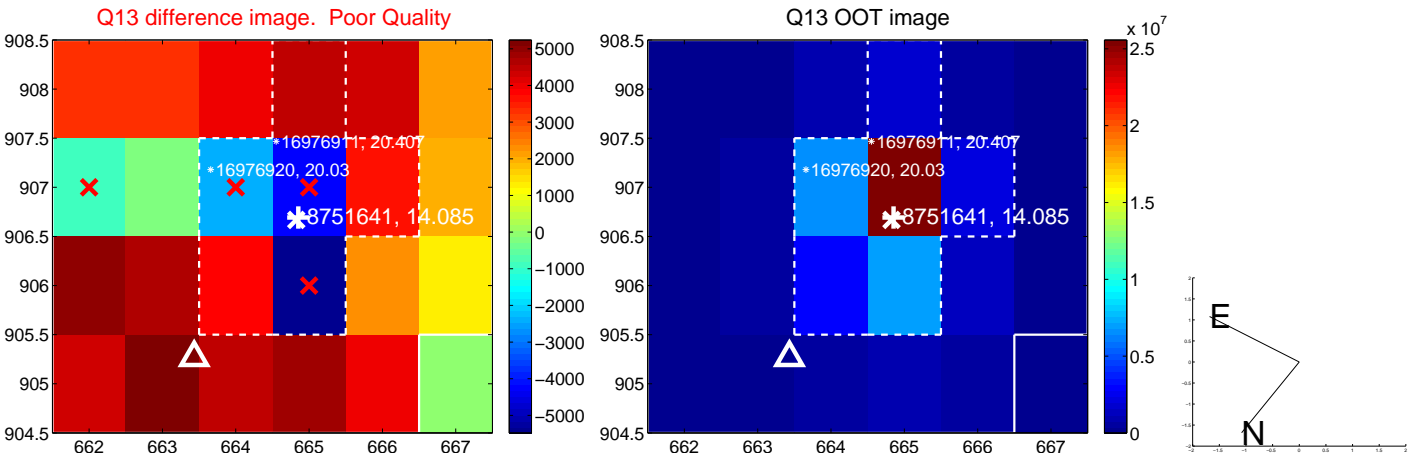
white \times : KIC target position; $+$: OOT centroid; \triangle : difference centroid. red \times : large negative pixel value



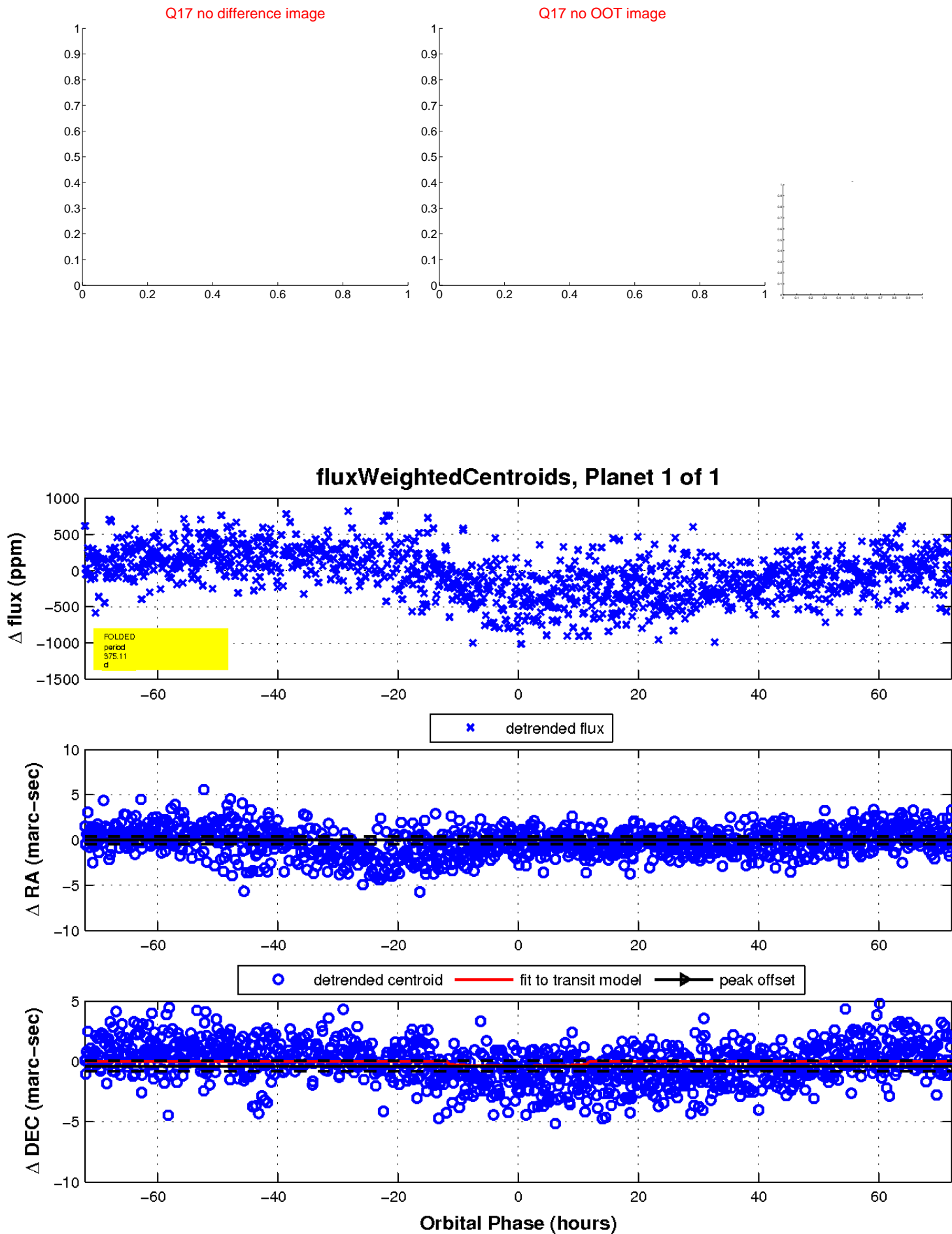
white \times : KIC target position; $+$: OOT centroid; \triangle : difference centroid. red \times : large negative pixel value.



white \times : KIC target position; +: OOT centroid; \triangle : difference centroid. red \times : large negative pixel value.



white \times : KIC target position; $+$: OOT centroid; \triangle : difference centroid. red \times : large negative pixel value.



UKIRT Image

Declination

