

# KIC 008700771

## Q1-17 DR25 TCE Parameters

TCE	Run Type	KOI?	Period (Days)	Epoch (BKJD)	Depth (ppm)	Duration (Hours)	MES	SNR	$R_{\star}$ ( $R_{\odot}$ )	$T_{\star}$ (K)	$R_p$ ( $R_{\oplus}$ )	$S_p$ ( $S_{\oplus}$ )
008700771-01	OBS	1283.01	8.092186	138.047158	65.3	5.462	27.1	29.4	1.40	5774	1.35	332.48

## Robovetter Results

TCE	Run Type	Disp	Score	N	S	C	E	Comments
008700771-01	OBS	PC	1.00	0	0	0	0	NO_COMMENT

**Notes:** OBS = Observed. INJ = Injected. INV = Inverted. SCR = Scrambled.

N = Not Transit-Like. S = Stellar Eclipse. C = Centroid Offset. E = Ephemeris Match.

See [http://exoplanetarchive.ipac.caltech.edu/docs/API\\_kepcandidate\\_columns.html#proj\\_disp\\_col](http://exoplanetarchive.ipac.caltech.edu/docs/API_kepcandidate_columns.html#proj_disp_col) for comment definitions.

## Ephemeris Match Information For 008700771-01

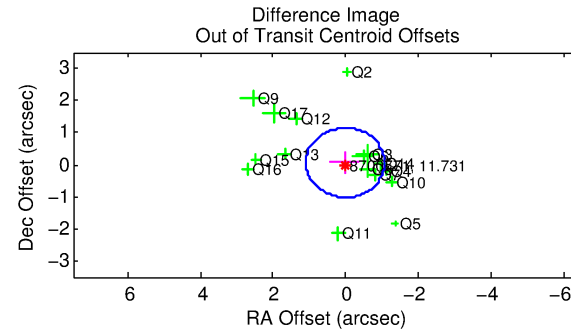
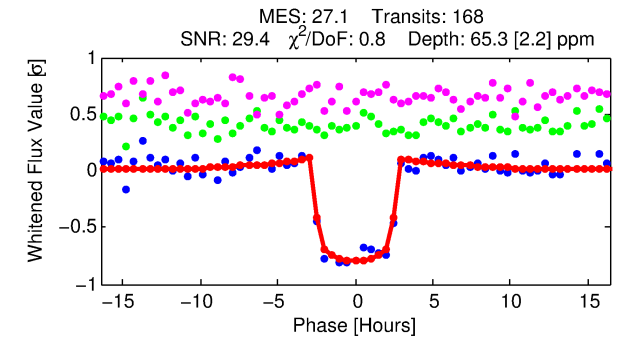
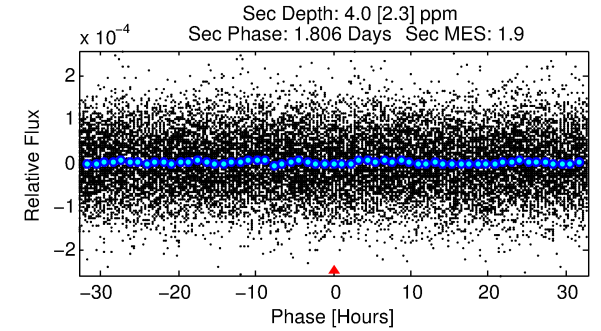
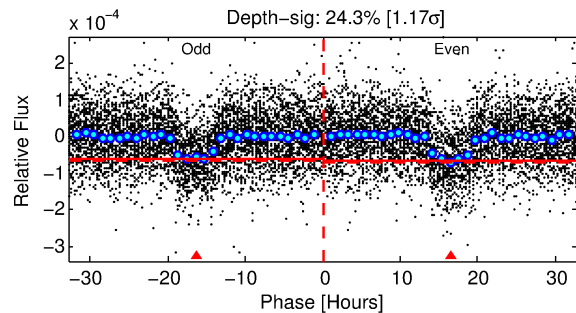
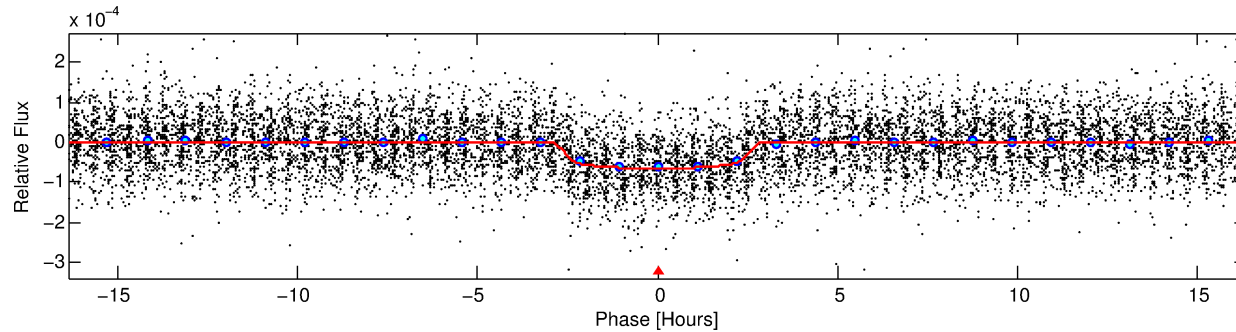
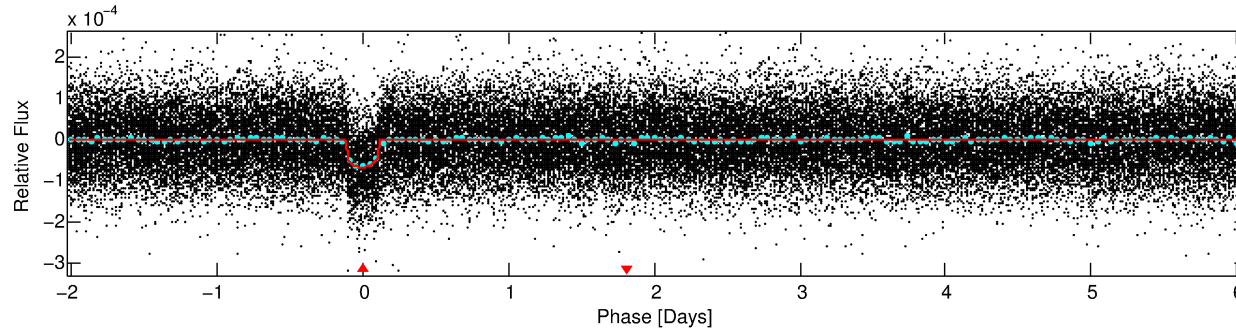
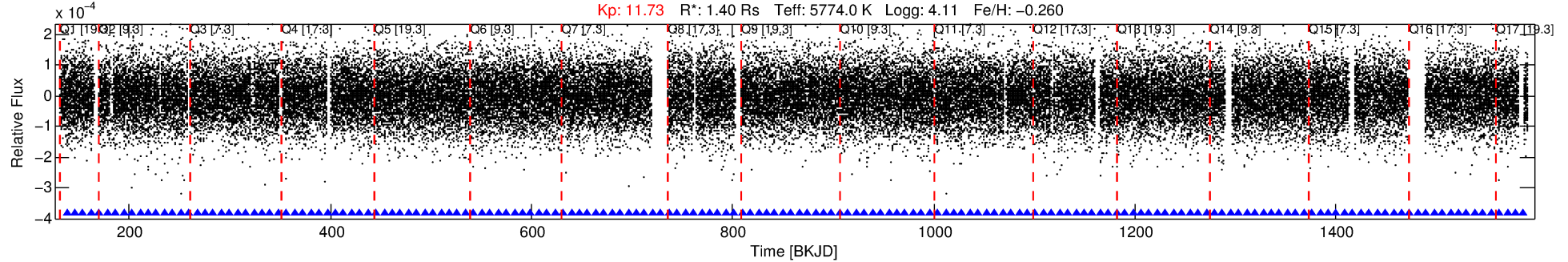
No Significant Match Found

# DV One-Page Summary

KIC: 8700771 Candidate: 1 of 1 Period: 8.092 d

KOI: K01283.01 Corr: 0.997

Kp: 11.73 R\*: 1.40 Rs Teff: 5774.0 K Logg: 4.11 Fe/H: -0.260



## DV Fit Results:

Period = 8.09219 [0.00003] d  
Epoch = 138.0472 [0.0027] BKJD  
Rp/R\* = 0.0089 [0.0010]  
a/R\* = 5.00 [2.77]  
b = 0.91 [0.11]  
Seff = 332.48 [128.21]  
Teq = 1089 [105] K  
Rp = 1.35 [0.35] Re  
a = 0.0763 [0.0177] AU  
Ag = 6.99 [5.03] [1.19σ]  
Teffp = 2738 [423] K [3.78σ]

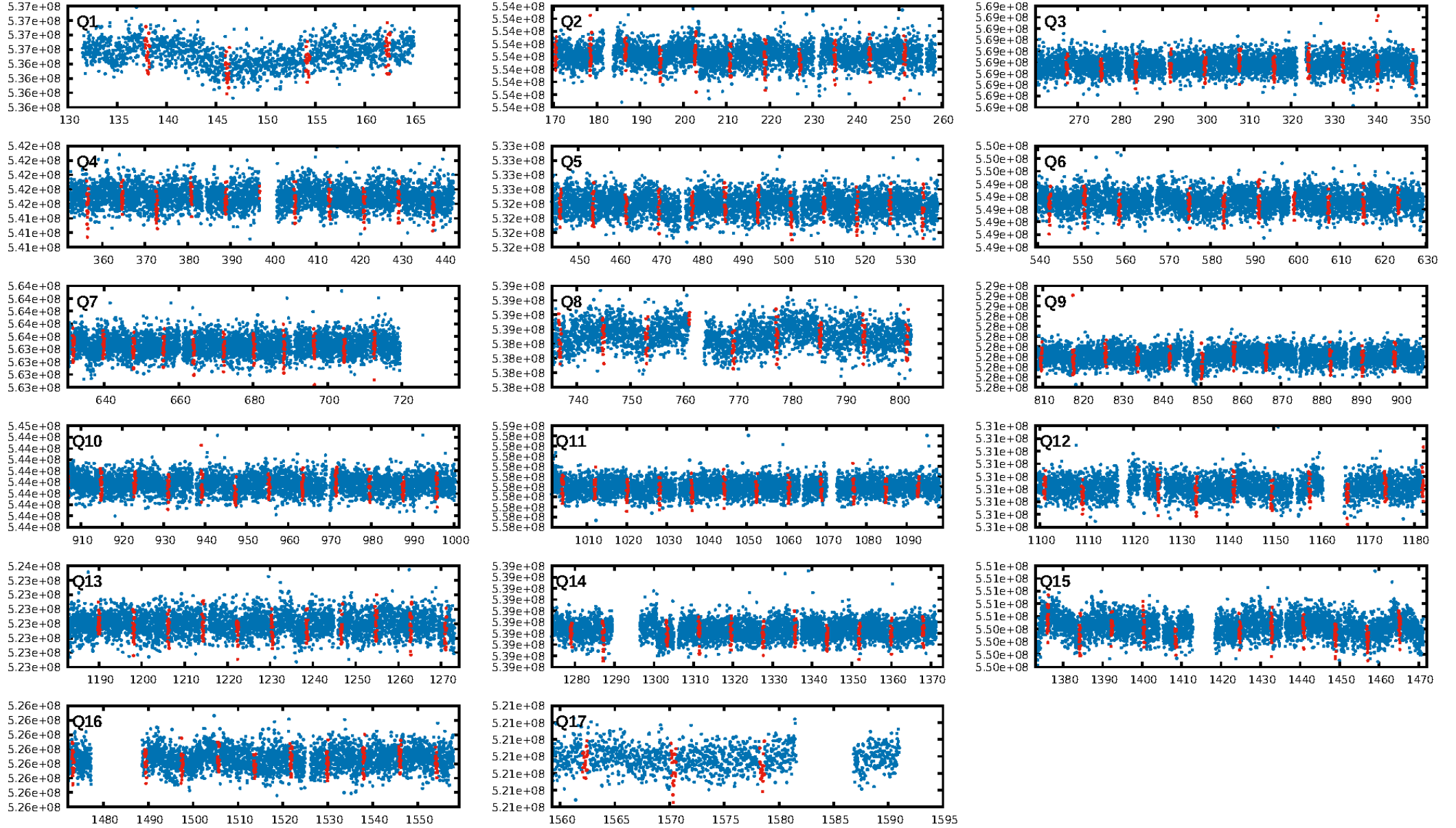
## DV Diagnostic Results:

ShortPeriod-sig: N/A  
LongPeriod-sig: N/A  
ModelChiSquare2-sig: 100.0%  
ModelChiSquareGof-sig: 100.0%  
Bootstrap-pfa: 5.41e-153  
RollingBand-fgt: 1.00 [161/161]  
GhostDiagnostic-chr: 10.84  
Centroid-sig: 86.9%  
Centroid-so: 0.291 arcsec [0.98σ]  
OotOffset-rm: 0.063 arcsec [0.17σ]  
KicOffset-rm: 0.338 arcsec [0.96σ]  
OotOffset-st: 4/4/4/4 [16]  
KicOffset-st: 4/4/4/4 [16]  
DiffImageQuality-fgm: 0.88 [14/16]  
DiffImageOverlap-fno: 1.00 [17/17]

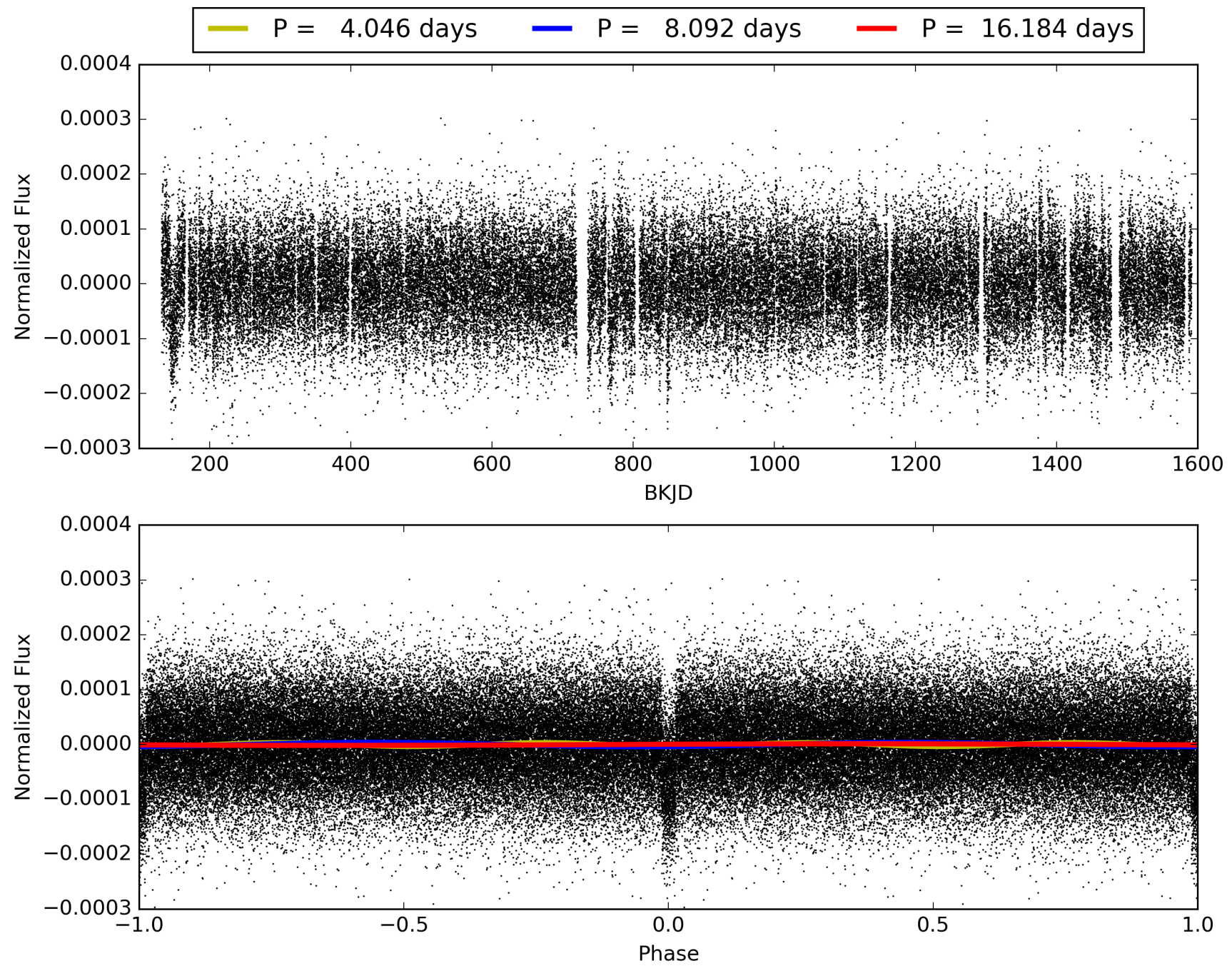
Software Revision: svn+ssh://murzim/repo/soc/tags/release/9.3.42@60958 -- Date Generated: 30-Jan-2016 14:08:58 Z

This Data Validation Report Summary was produced in the Kepler Science Operations Center Pipeline at NASA Ames Research Center

# TCE 008700771-01, PDC Light Curves



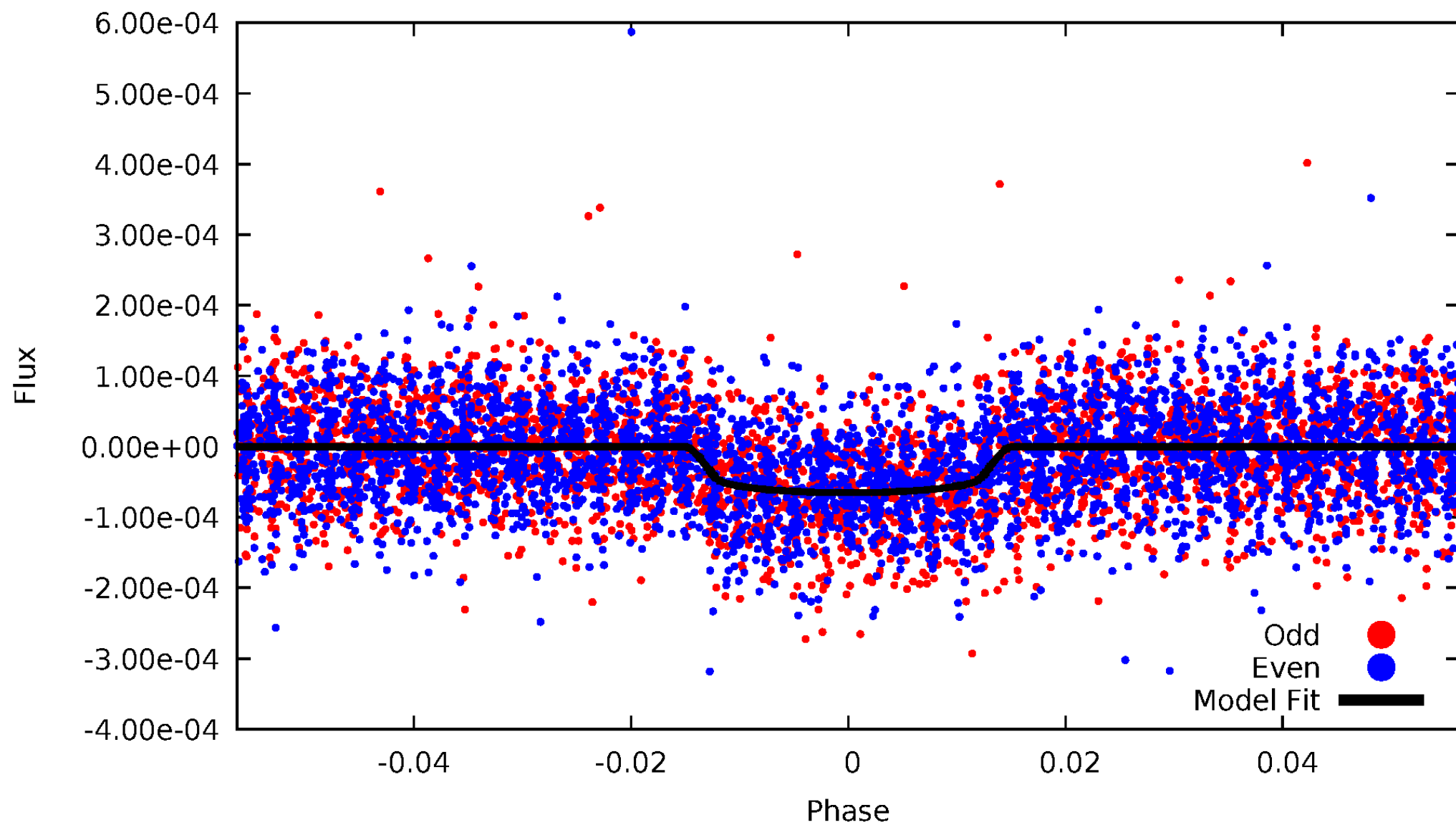
TCE 008700771-01





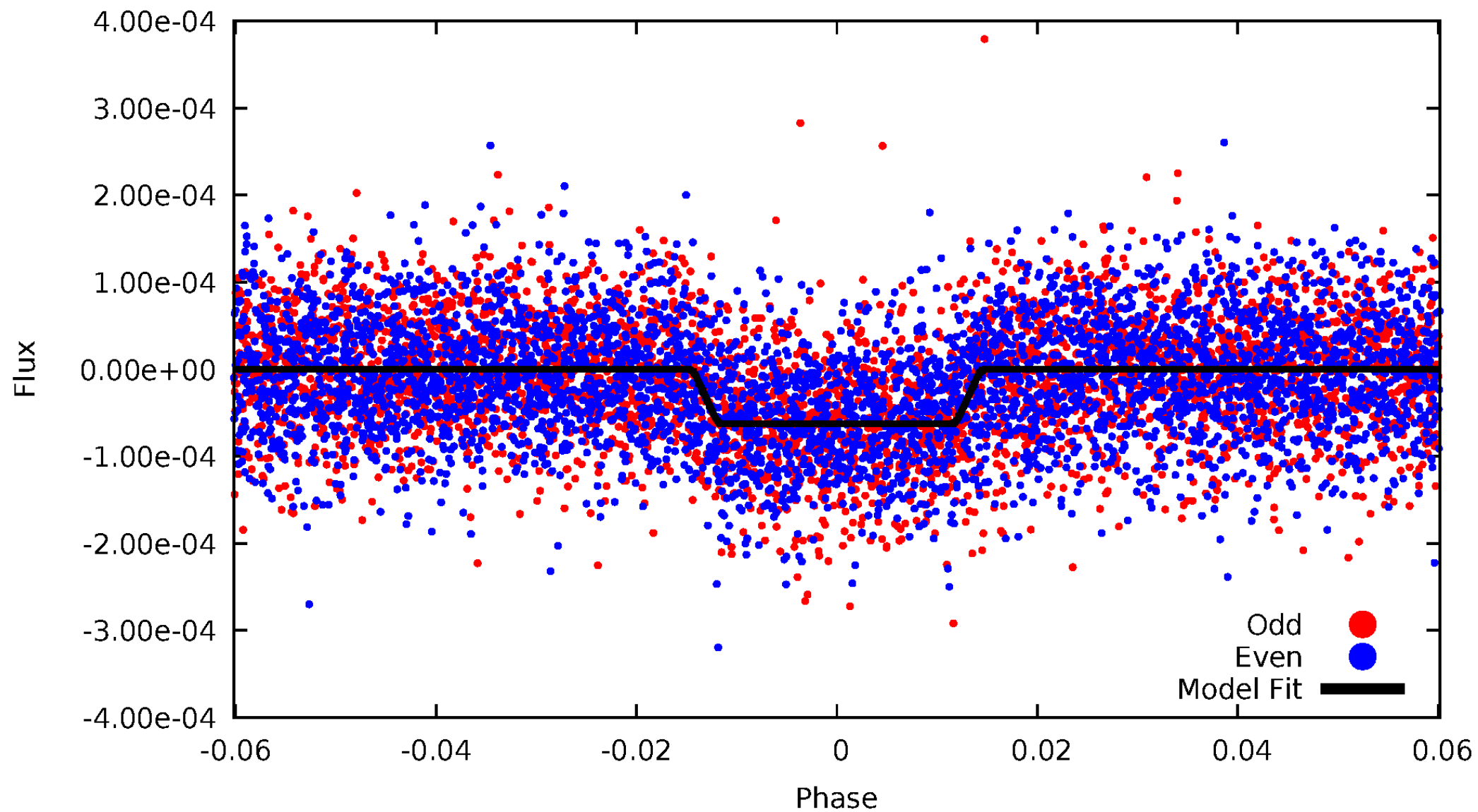
# DV Odd/Even

TCE 008700771-01



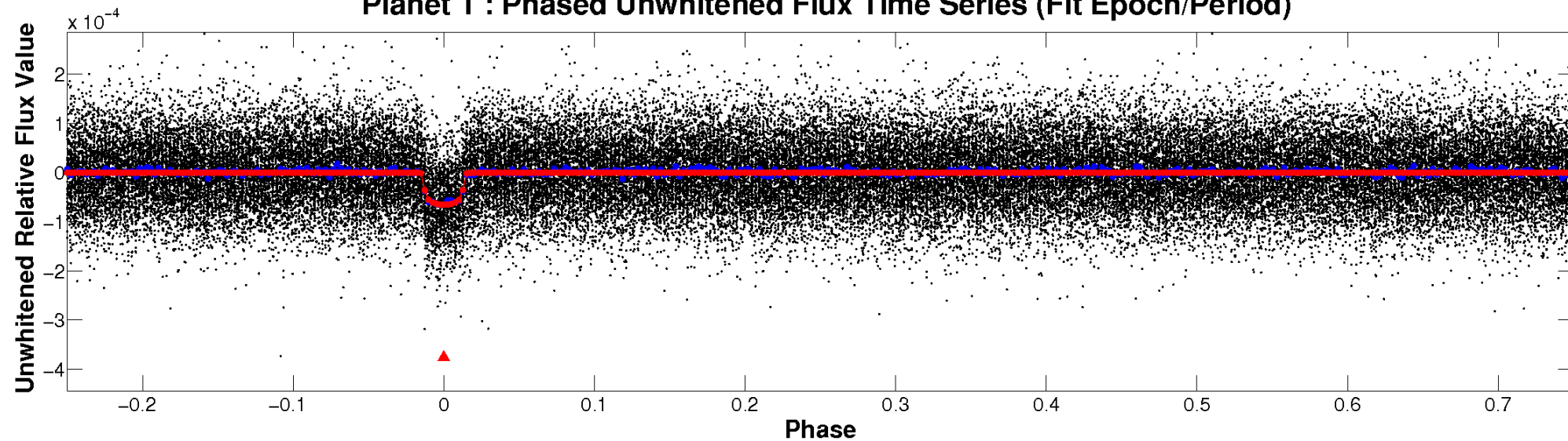
# ALT Odd/Even

TCE 008700771-01

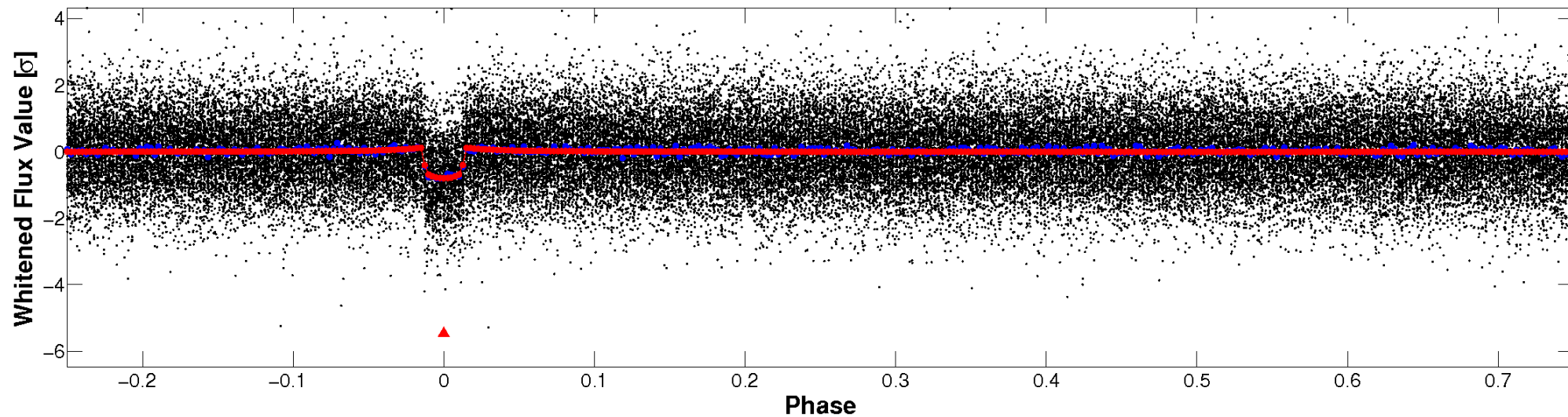


# Non-Whitened Vs. Whitened Light Curve

**Planet 1 : Phased Unwhitened Flux Time Series (Fit Epoch/Period)**

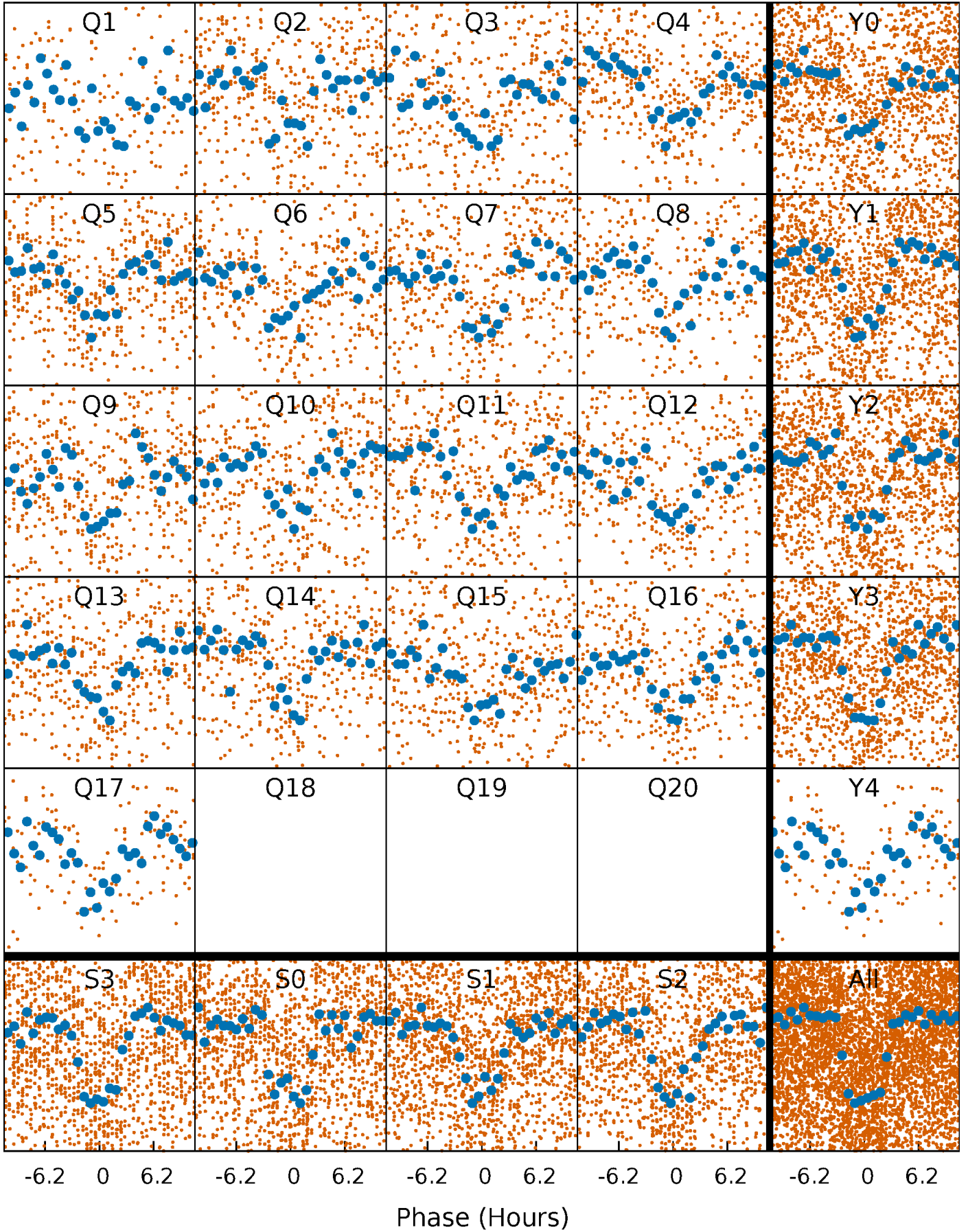


**Planet 1 : Phased Whitened Flux Time Series (Fit Epoch/Period)**



# PDC Quarter-Phased Transit Curves

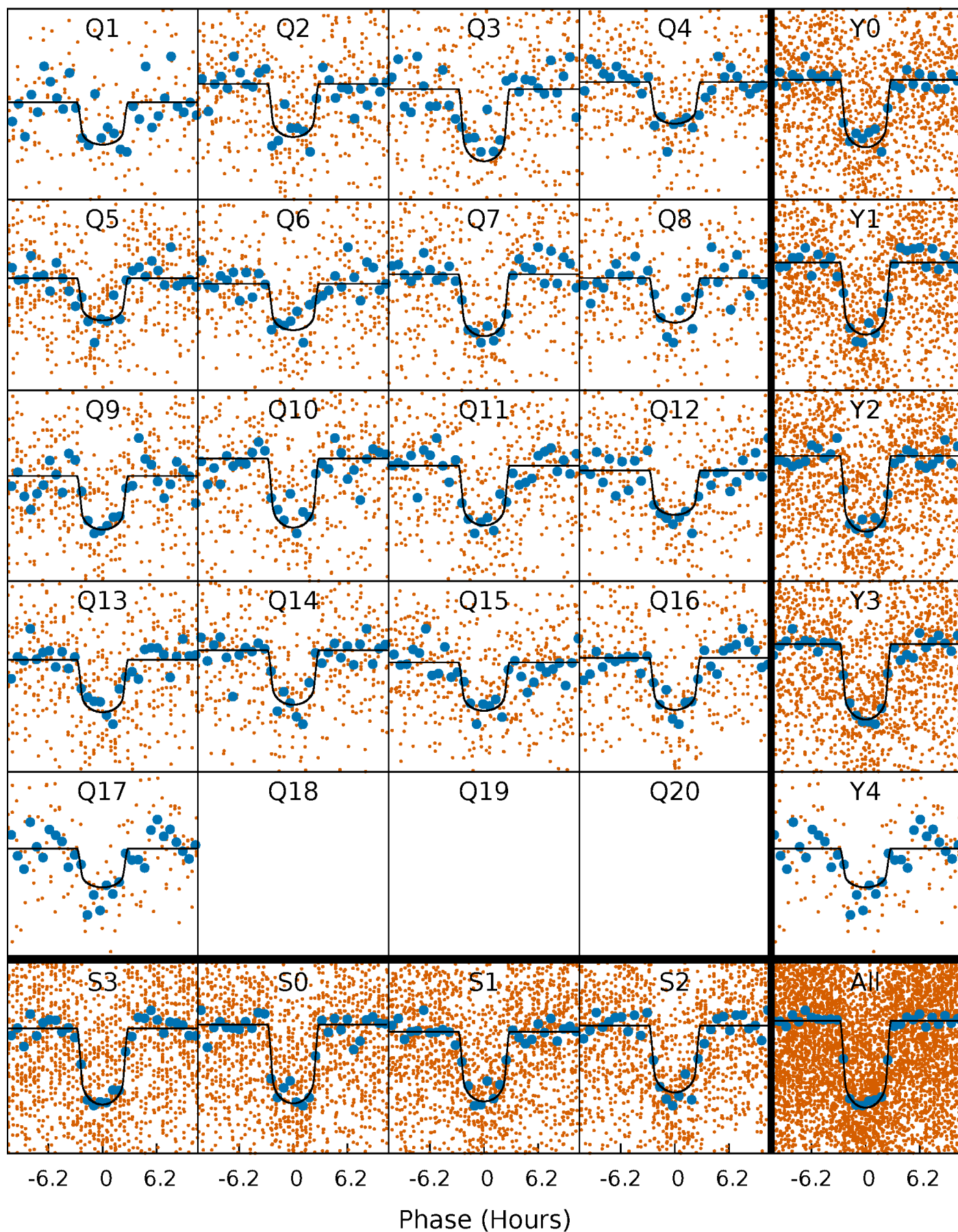
TCE 008700771-01   P= 8.092186 Days    $T_0=138.047158$  (BKJD)





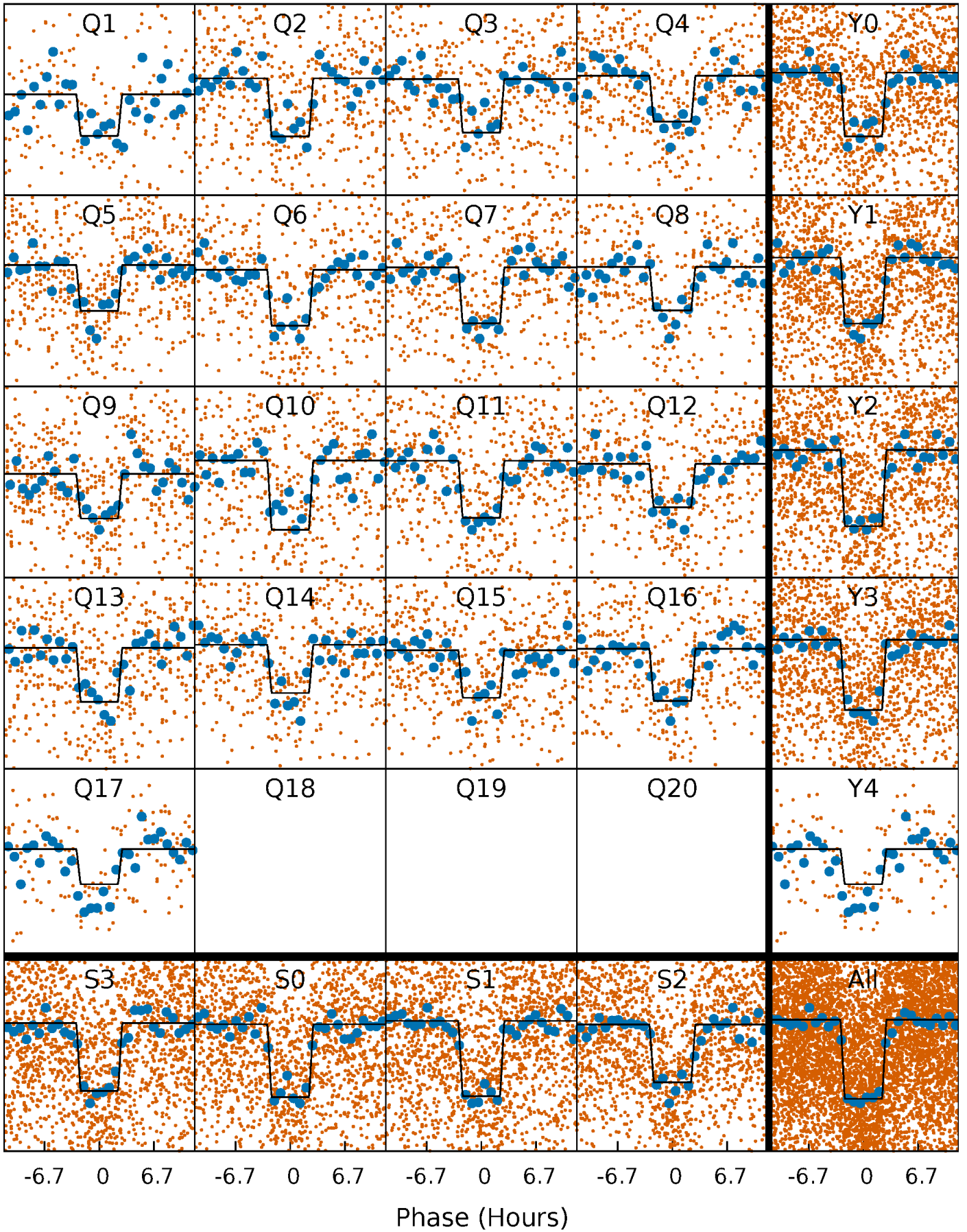
# DV Quarter-Phased Transit Curves

TCE 008700771-01 P= 8.092186 Days  $T_0=138.047158$  (BKJD)



# Alt. Detrend Quarter-Phased Transit Curves

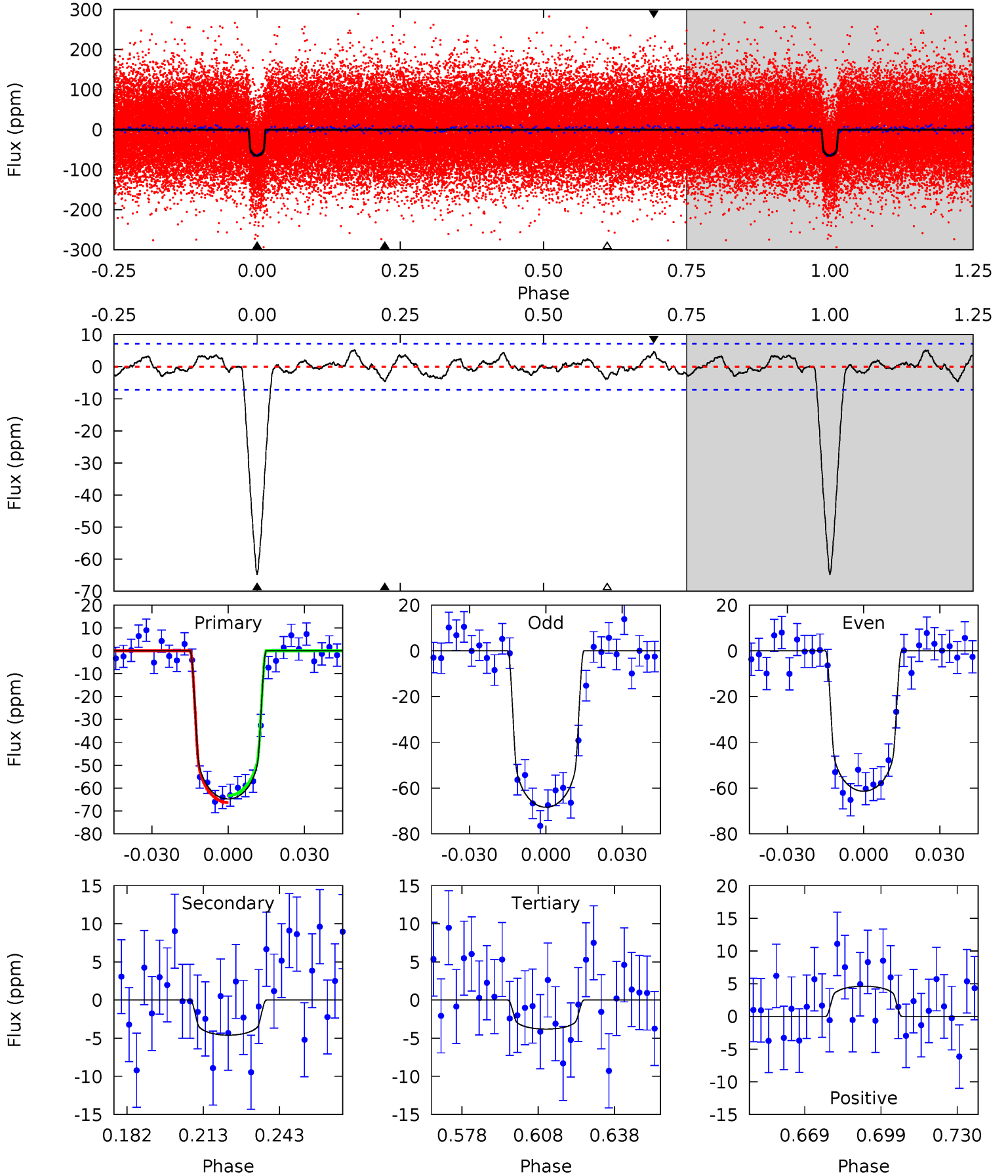
TCE 008700771-01 P= 8.092291 Days  $T_0=138.038152$  (BKJD)



# DV Model-Shift Uniqueness Test

008700771-01, P = 8.092186 Days, E = 129.954972 Days

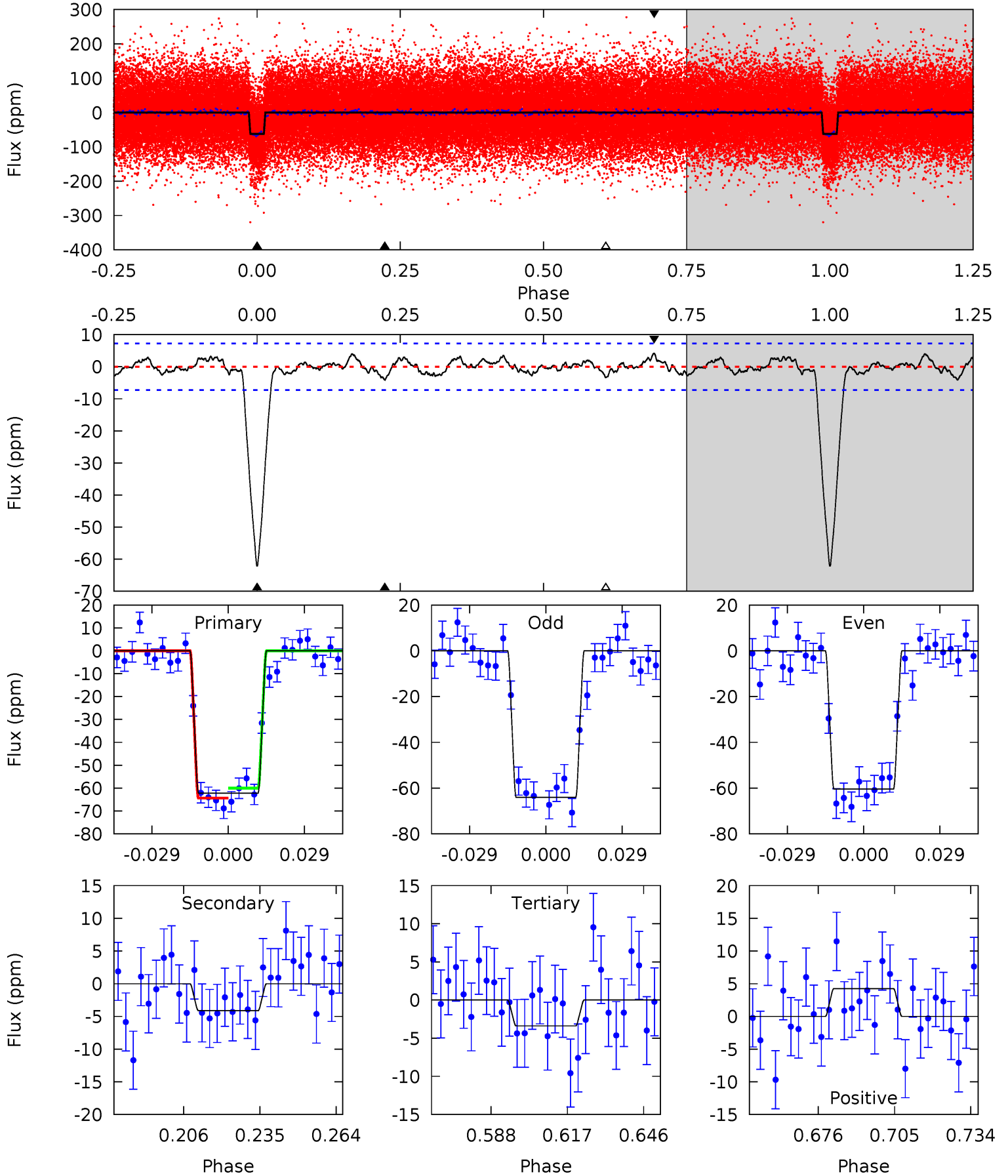
Pri	Sec	Ter	Pos	FA <sub>1</sub>	FA <sub>2</sub>	F <sub>Red</sub>	Pri-Ter	Pri-Pos	Sec-Ter	Sec-Pos	Odd-Evn	DMM	Shape	TAT
43.4	3.08	2.55	3.09	4.81	2.16	1.26	40.8	40.3	0.53	-0.01	2.34	0.99	0.07	1.02



# Alt Model-Shift Uniqueness Test

008700771-01, P = 8.092291 Days, E = 129.945861 Days

Pri	Sec	Ter	Pos	FA <sub>1</sub>	FA <sub>2</sub>	F <sub>Red</sub>	Pri-Ter	Pri-Pos	Sec-Ter	Sec-Pos	Odd-Evn	DMM	Shape	TAT
41.2	2.74	2.25	2.82	4.82	2.18	1.04	39.0	38.4	0.49	-0.08	1.21	1.02	0.06	1.43





### Stellar Parameters For KIC 008700771

	$T_{\text{eff}}(K)$	$\log(g)$	[Fe/H]	$R (R_{\odot})$	$M(M_{\odot})$	$p_{\star} (\text{g}\cdot\text{cm}^{-3})$
	$5774^{+115}_{-92}$	$4.106^{+0.224}_{-0.096}$	$-0.260^{+0.150}_{-0.100}$	$1.395^{+0.216}_{-0.325}$	$0.907^{+0.076}_{-0.062}$	$0.470^{+0.525}_{-0.156}$
	+2%/-2%	+5%/-2%	+58%/-38%	+15%/-23%	+8%/-7%	+112%/-33%
Source	SPE59	SPE59	SPE59	DSEP		

KIC = Kepler Input Catalog; PHO = Photometry; SPE = Spectroscopy; AST = Asteroseismology  
 TRA = Transits; DESP = Dartmouth Models; MULT = Multiple Models

### Secondary Eclipse Parameters for KIC 008700771-01 / KOI 1283.01

Detrend	Depth (ppm)	$R_p (R_{\oplus})$	$T_{\text{max}} (K)$	$T_{\text{obs}} (K)$	$A_{\text{obs}}$
DV	$-5 \pm 1$	$1.31^{+0.20}_{-0.21}$	$1506^{+72}_{-99}$	$3349^{+210}_{-232}$	$8.479^{+5.009}_{-3.196}$
Alt.	$-4 \pm 2$	$1.17^{+0.20}_{-0.19}$	$1507^{+71}_{-94}$	$3422^{+250}_{-269}$	$9.708^{+6.136}_{-3.999}$

$T_{\text{max}}$  = Theoretical Maximum Planetary Temperature

$T_{\text{obs}}$  = Observed Planetary Temperature (Assuming  $A=0.3$ )

$A_{\text{obs}}$  = Observed Albedo (Assuming  $T=0$ )

If a secondary eclipse is present, the system is likely an EB if  $T_{\text{obs}} \gg T_{\text{max}}$  AND  $A_{\text{obs}} \gg 1.0$

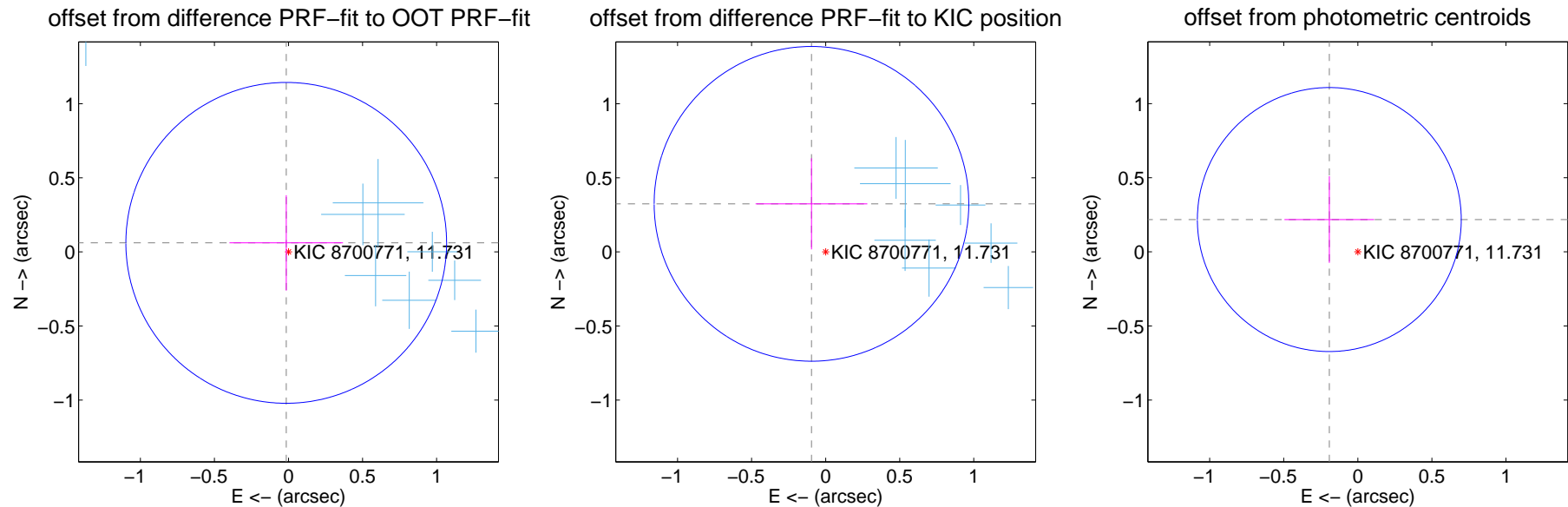
## DV Centroid Data

Supplemental centroid analysis for 008700771-01. **Kepler magnitude: 11.73.** Transit SNR 29.44

There are 14 quarters with good PRF difference image offsets

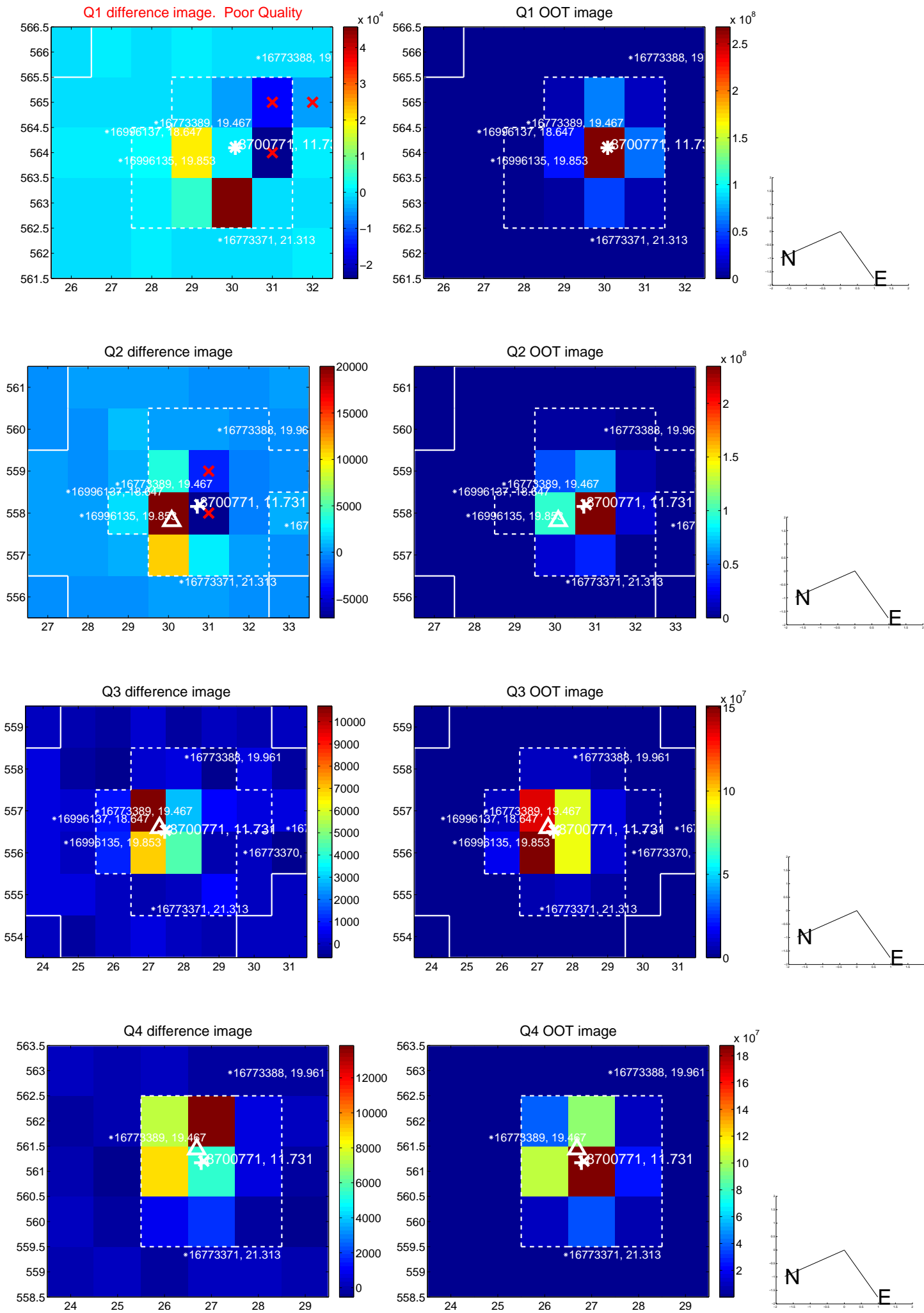
The direct PRF centroid is offset from the target star catalog position by about 0.40 arcsec

	Distance in arcsec	Distance / $\sigma$	$\Delta$ RA	$\Delta$ Dec
PRF-fit source offset from OOT	$0.063 \pm 0.361$	0.17	$0.015 \pm 0.383$	$0.061 \pm 0.322$
PRF-fit source offset from KIC position	$0.338 \pm 0.354$	0.96	$0.096 \pm 0.377$	$0.324 \pm 0.307$
photometric centroid source offset	$0.29 \pm 0.30$	0.98	$0.19 \pm 0.30$	$0.22 \pm 0.29$

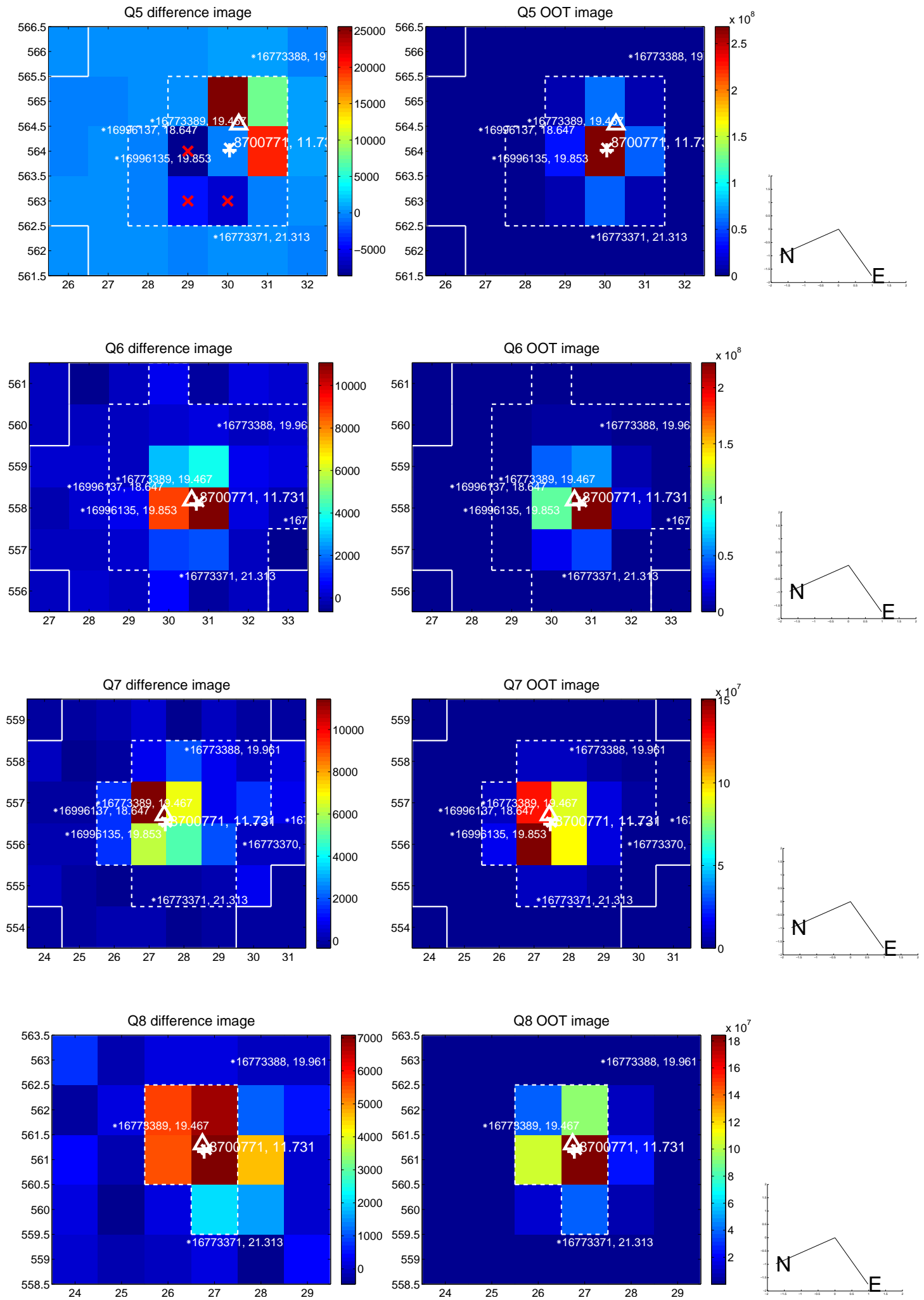


Centroid source offsets from the target star reconstructed from PRF and photometric centroids. **Sky blue crosses: good quarterly centroid offsets; Vermillion crosses: bad quarterly centroid offsets;** magenta cross: average over quarters. Length of the crosses: one- $\sigma$  uncertainty. Blue circle: three- $\sigma$ . Red \*: target star. Blue \*: Other stars. Text next to a star gives its KIC ID and kepmag. KIC IDs > 15,000,000 are from the UKIRT catalog.

white  $\times$ : KIC target position; +: OOT centroid;  $\triangle$ : difference centroid. red  $\times$ : large negative pixel value.

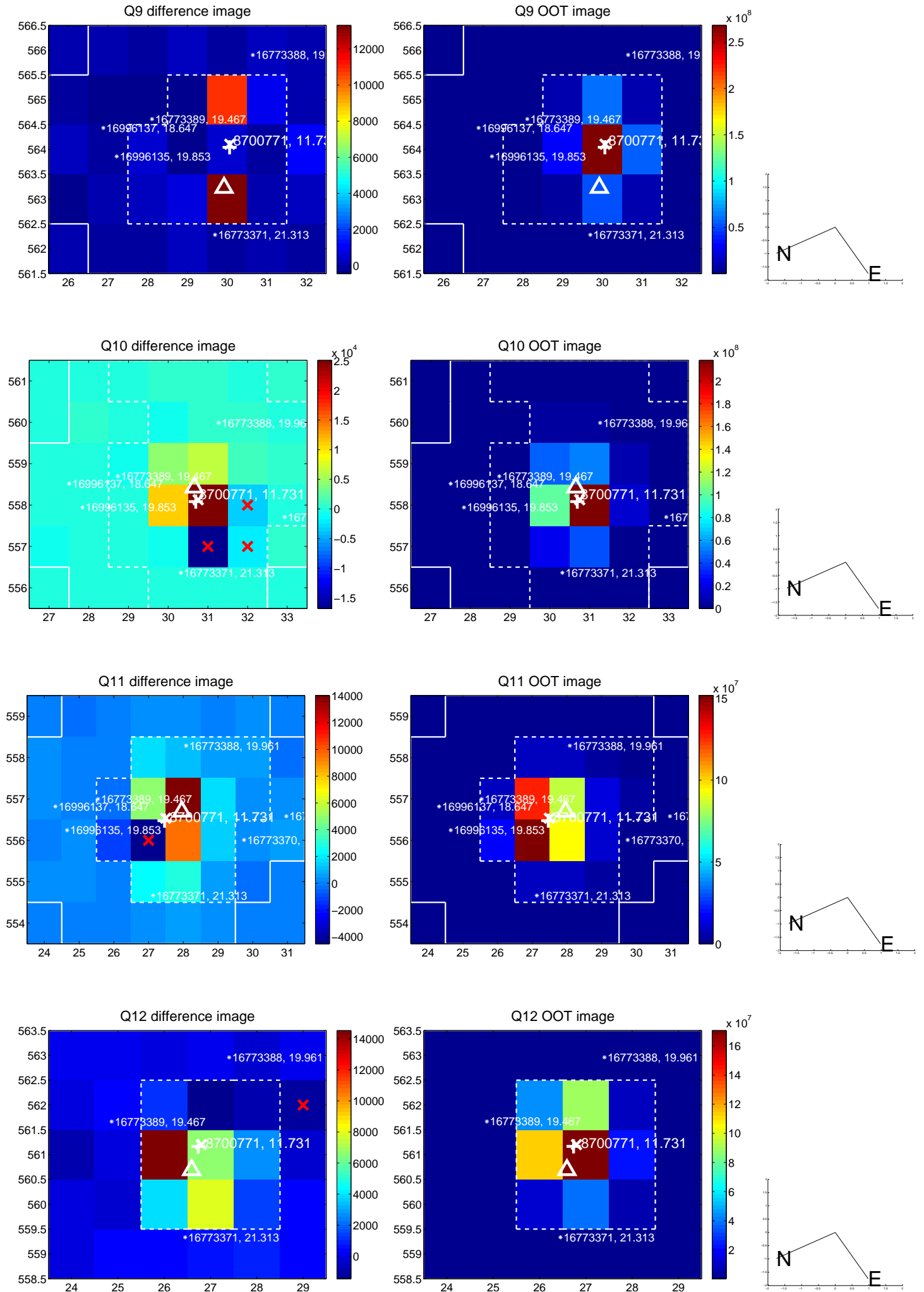


white  $\times$ : KIC target position; +: OOT centroid;  $\triangle$ : difference centroid. red  $\times$ : large negative pixel value.

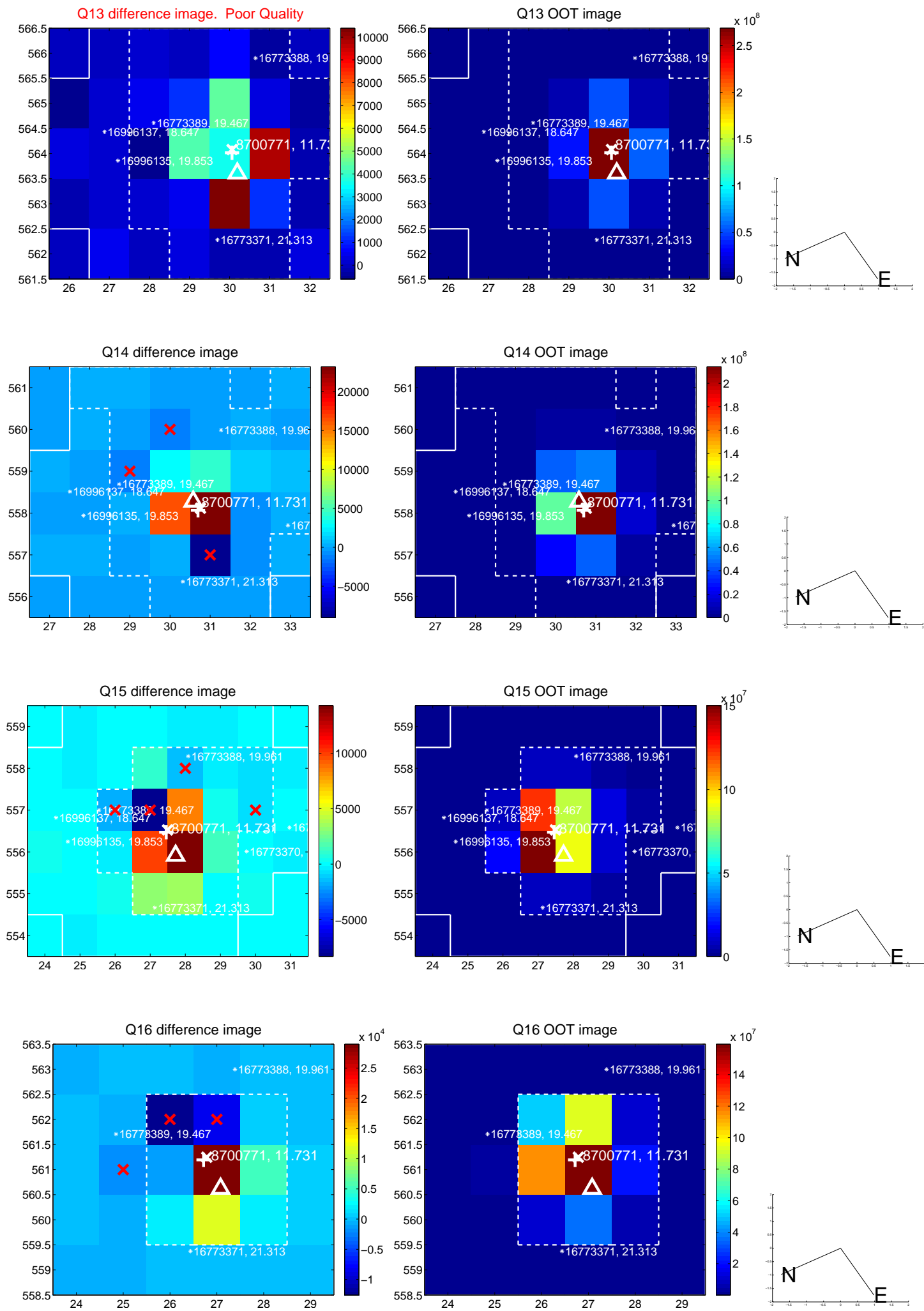




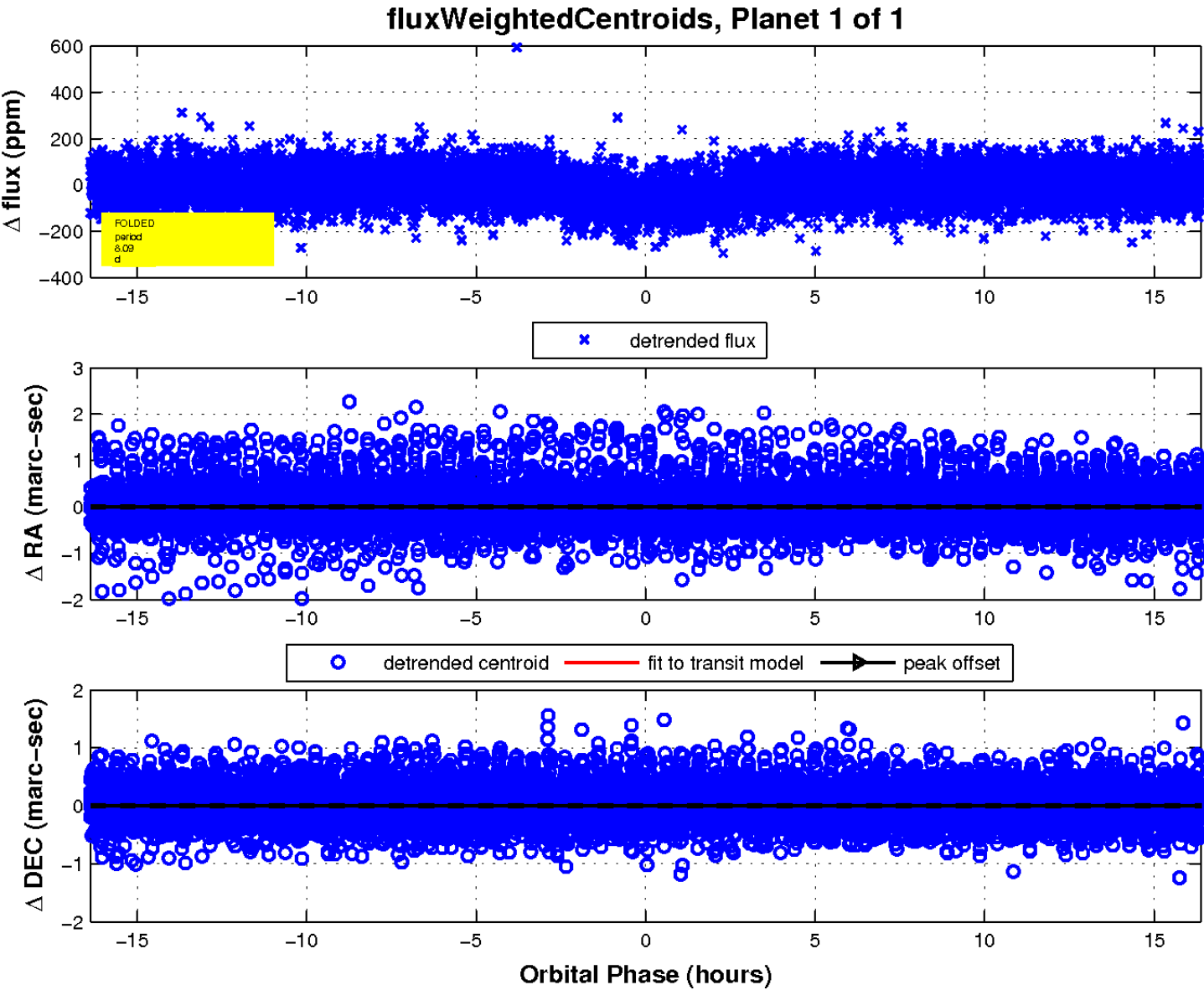
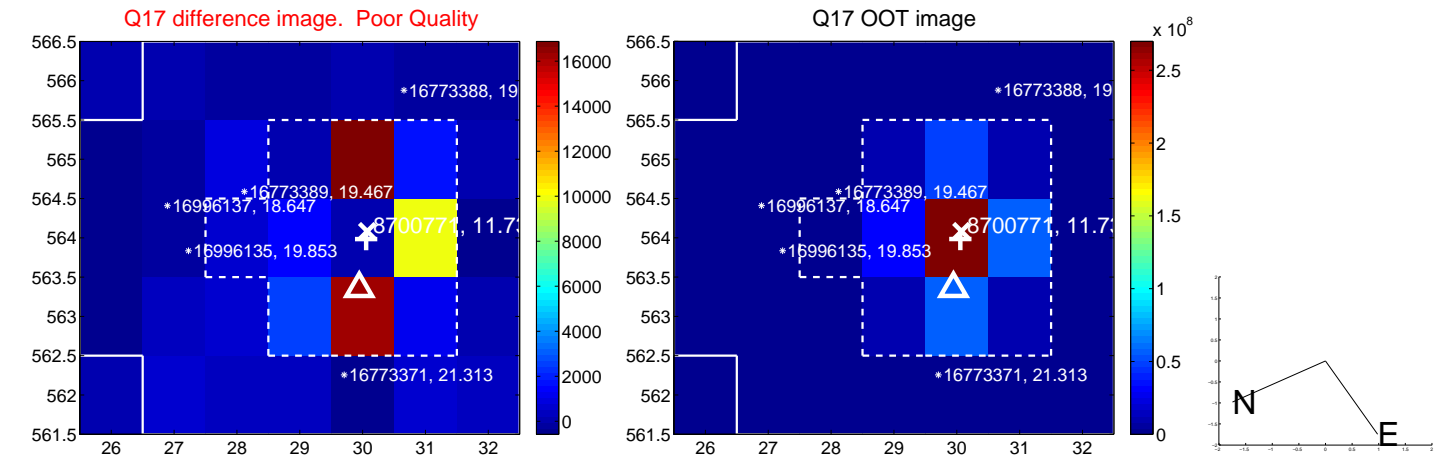
white  $\times$ : KIC target position; +: OOT centroid;  $\triangle$ : difference centroid. red  $\times$ : large negative pixel value.



white  $\times$ : KIC target position; +: OOT centroid;  $\triangle$ : difference centroid. red  $\times$ : large negative pixel value.



white  $\times$ : KIC target position;  $+$ : OOT centroid;  $\triangle$ : difference centroid. red  $\times$ : large negative pixel value.



UKIRT Image

Declination

