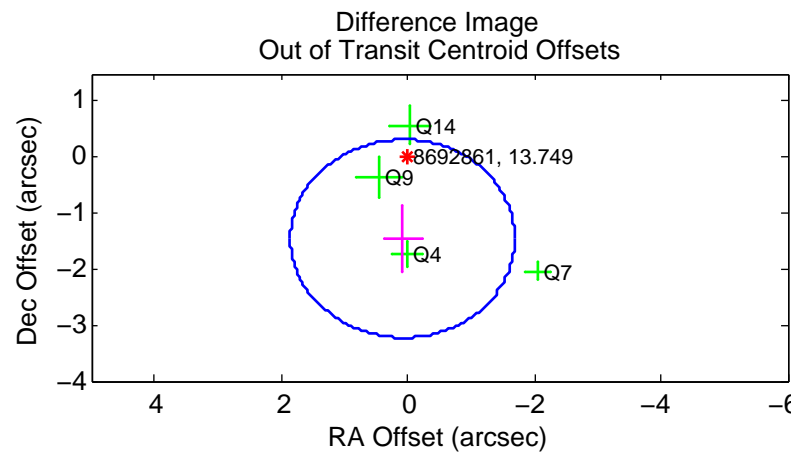
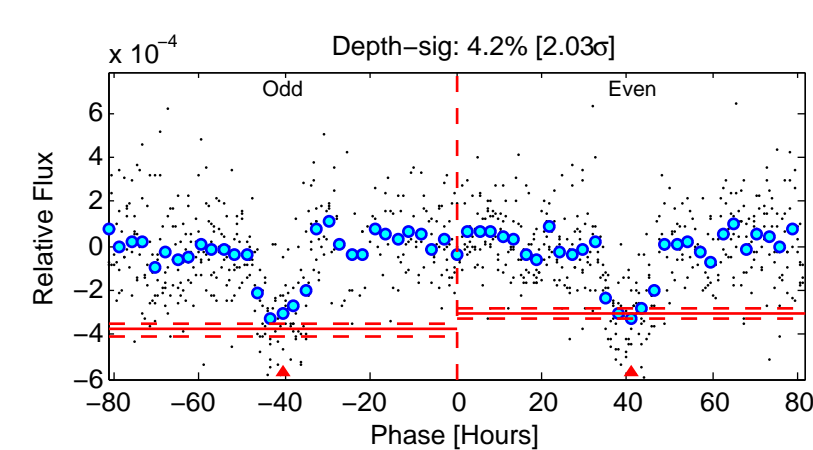
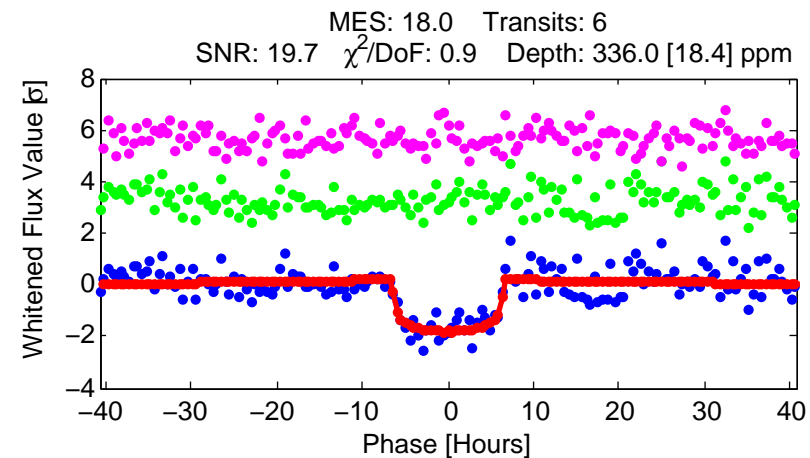
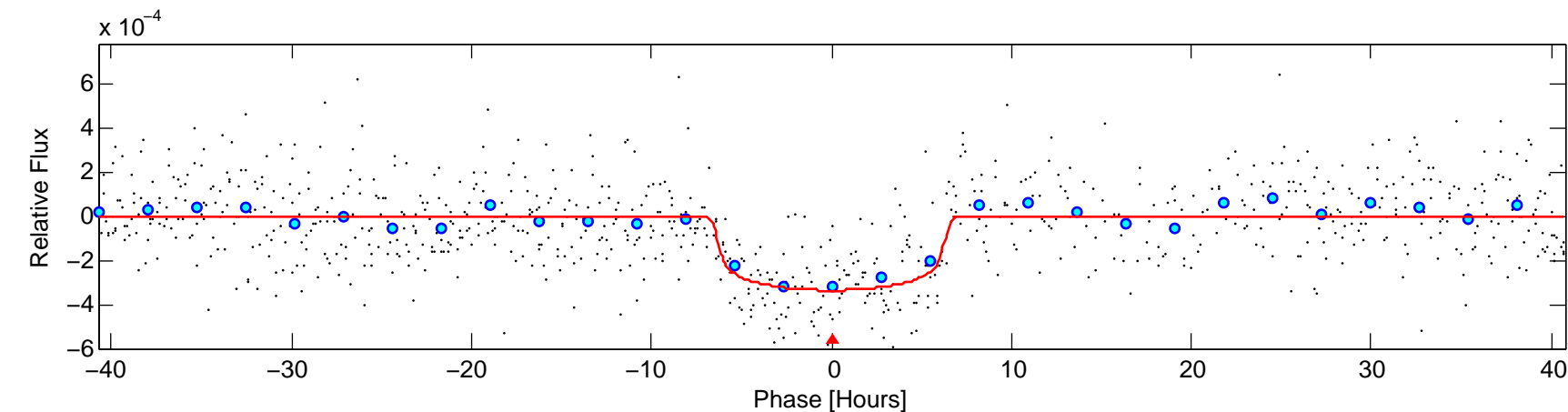
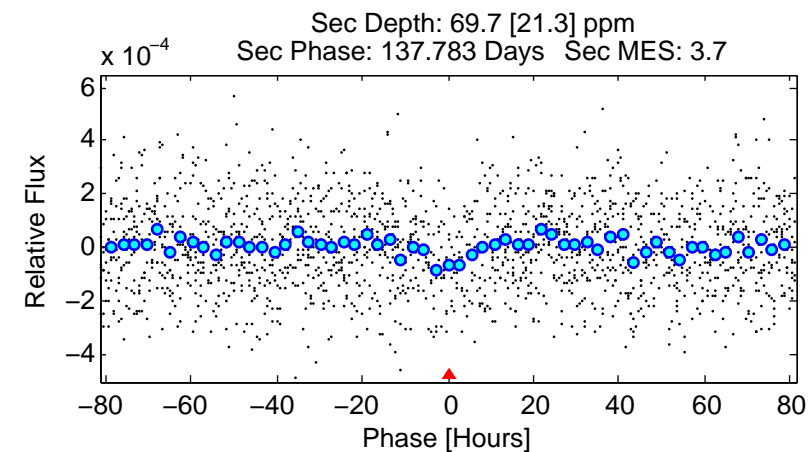
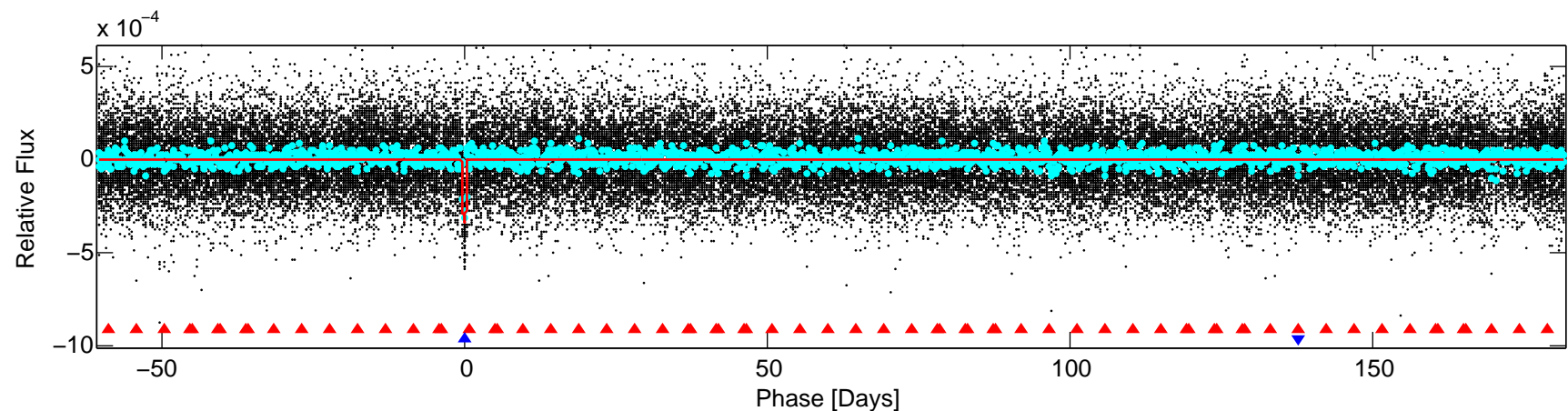
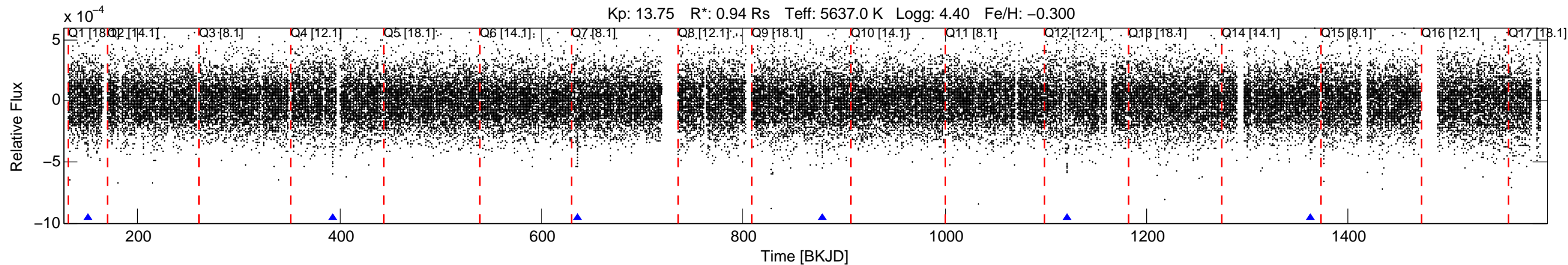


KIC: 8692861 Candidate: 2 of 2 Period: 242.468 d
 KOI: K00172.02 Name: Kepler-69c Corr: 0.962



DV Fit Results:

Period = 242.46768 [0.00357] d
 Epoch = 150.8588 [0.0110] BKJD
 Rp/R* = 0.0193 [0.0019]
 a/R* = 74.74 [33.13]
 b = 0.86 [0.14]
 Seff = 1.59 [0.37]
 Teq = 287 [17] K
 Rp = 1.99 [0.32] Re
 a = 0.7104 [0.0929] AU
 Ag = 4905.65 [2090.03] [2.35σ]
 Teffp = 3707 [347] K [9.85σ]

DV Diagnostic Results:

ShortPeriod-sig: 100.0% [377.15σ]
 LongPeriod-sig: N/A
 ModelChiSquare2-sig: 1.1%
 ModelChiSquareGof-sig: 100.0%
 Bootstrap-pfa: 1.87e-66
 RollingBand-fgt: 1.00 [5/5]
 GhostDiagnostic-chr: -15.21
 Centroid-sig: 13.3%
 Centroid-so: 0.508 arcsec [0.78σ]
 OotOffset-rm: 1.457 arcsec [2.47σ]
 KicOffset-rm: 1.574 arcsec [2.55σ]
 OotOffset-st: 1/1/1/1 [4]
 KicOffset-st: 1/1/1/1 [4]
 DiffImageQuality-fgm: 1.00 [4/4]
 DiffImageOverlap-fno: 0.60 [3/5]