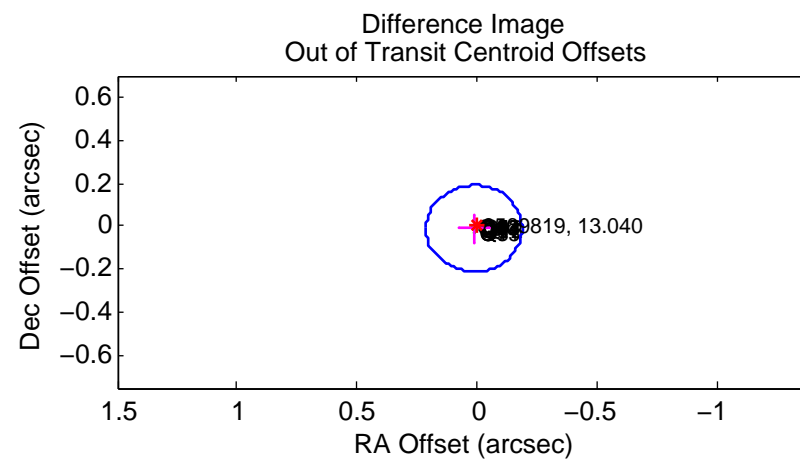
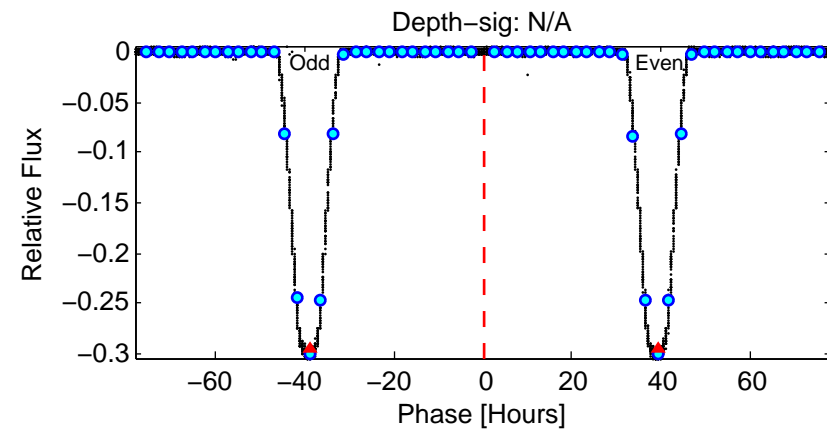
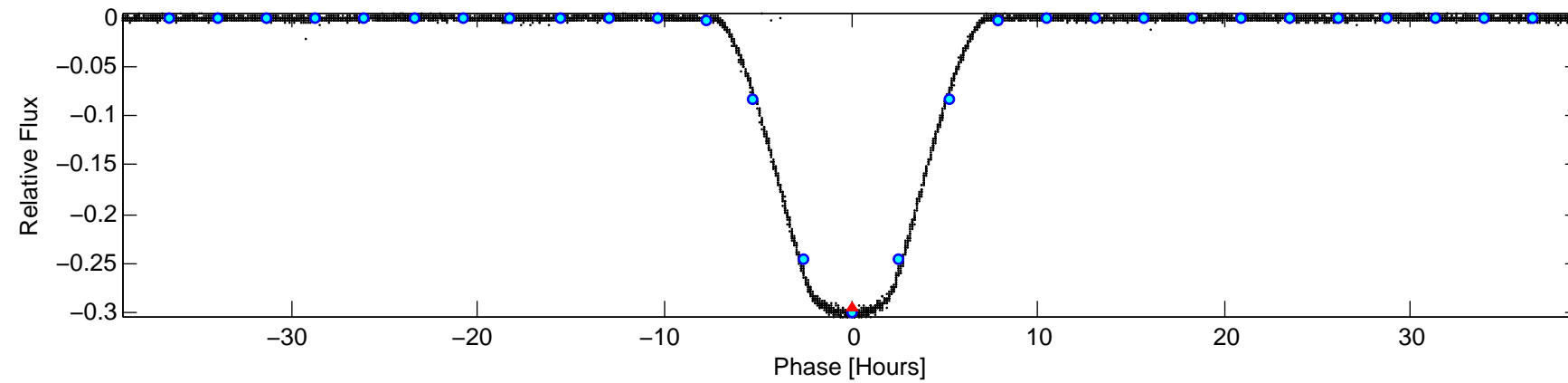
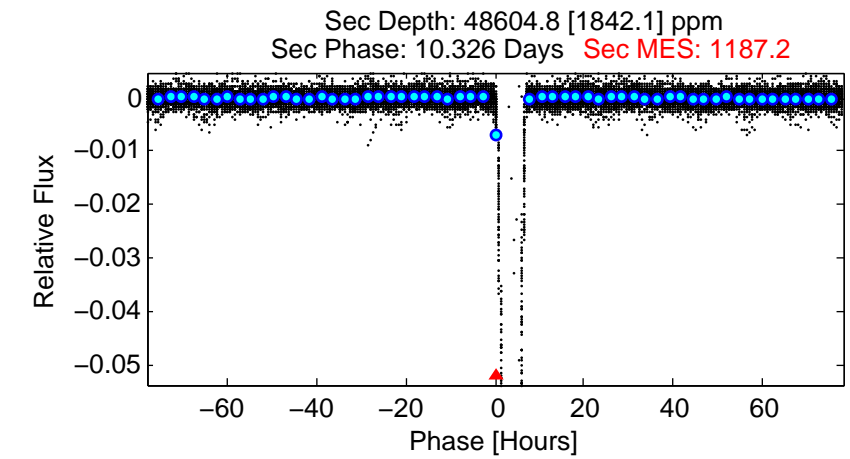
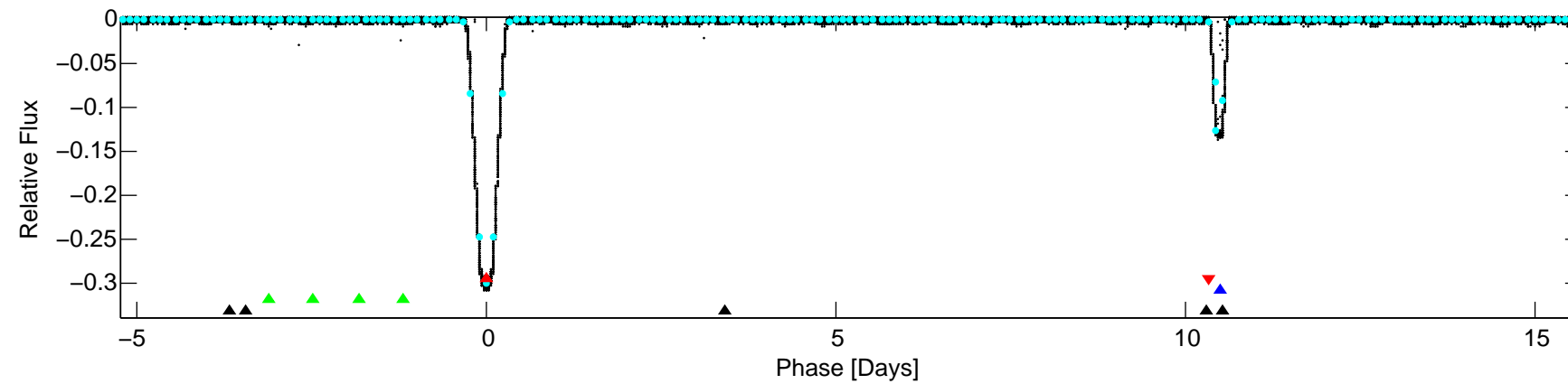
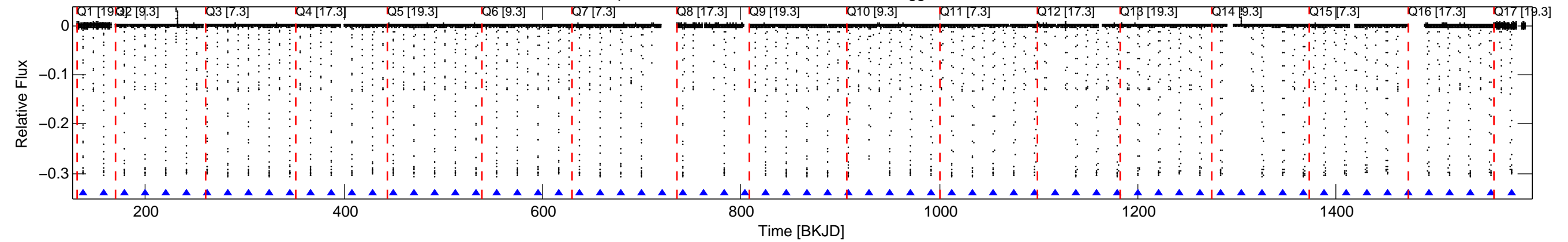


KIC: 8569819 Candidate: 1 of 4 Period: 20.850 d  
KOI: K07062.01 Corr: 0.934

Kp: 13.04 R\*: 1.98 Rs Teff: 7355.0 K Logg: 4.04 Fe/H: -0.120



#### TPS TCE Results:

Period = 20.84990 d  
Epoch = 137.5627 BKJD

DV fit results are unavailable

#### DV Diagnostic Results:

ShortPeriod-sig: N/A  
LongPeriod-sig: 0.0% [0.00 $\sigma$ ]  
ModelChiSquare2-sig: N/A  
ModelChiSquareGof-sig: N/A  
Bootstrap-pfa: N/A  
RollingBand-fgt: 1.00 [62/62]  
GhostDiagnostic-chr: 1.647  
Centroid-sig: N/A  
Centroid-so: 0.351 arcsec [971.54 $\sigma$ ]  
OotOffset-rm: 0.018 arcsec [0.27 $\sigma$ ]  
KicOffset-rm: 0.213 arcsec [2.83 $\sigma$ ]  
OotOffset-st: 4/4/4/5 [17]  
KicOffset-st: 4/4/4/5 [17]  
DiffImageQuality-fgm: 1.00 [17/17]  
DiffImageOverlap-fno: 1.00 [17/17]