

KIC 008556302

Q1-17 DR25 TCE Parameters

TCE	Run Type	KOI?	Period (Days)	Epoch (BKJD)	Depth (ppm)	Duration (Hours)	MES	SNR	R_{\star} (R_{\odot})	T_{\star} (K)	R_p (R_{\oplus})	S_p (S_{\oplus})
008556302-01	OBS	No	370.939929	174.085958	1622.6	22.197	10.5	9.8	1.01	6181	7.60	1.24

Robovetter Results

TCE	Run Type	Disp	Score	N	S	C	E	Comments
008556302-01	OBS	FP	0.00	1	0	0	0	INDIV_TRANS_MARSHALL—INCONSISTENT_TRANS—CENT_FEW_DIFFS

Notes: OBS = Observed. INJ = Injected. INV = Inverted. SCR = Scrambled.

N = Not Transit-Like. S = Stellar Eclipse. C = Centroid Offset. E = Ephemeris Match.

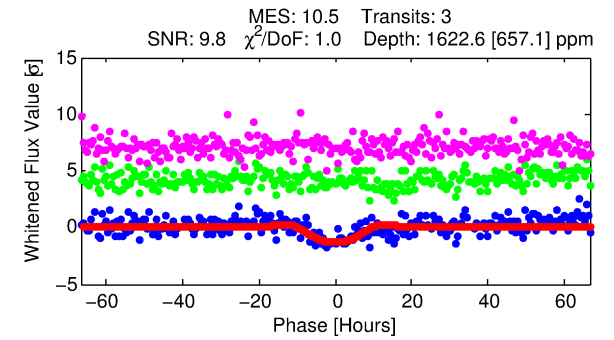
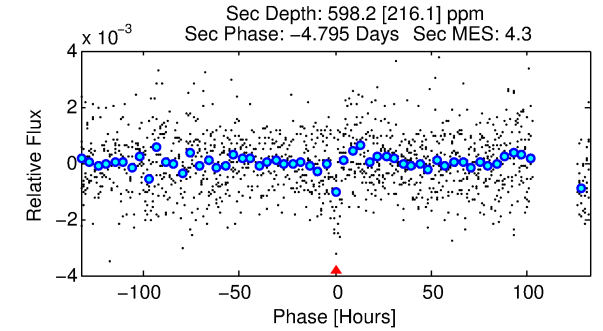
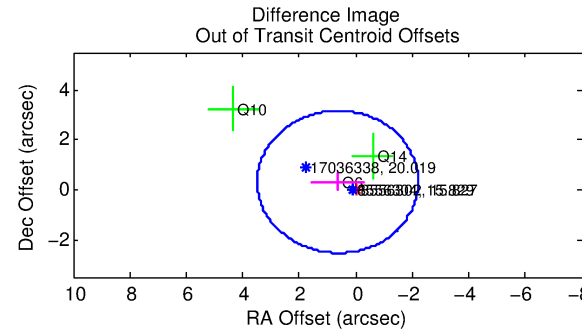
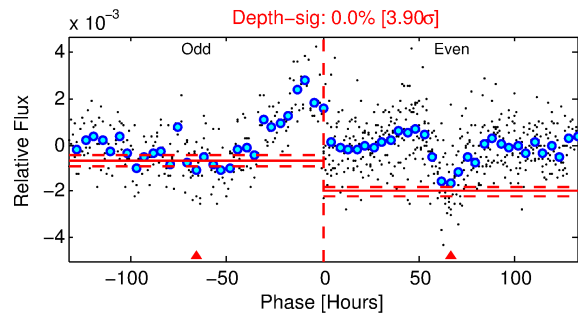
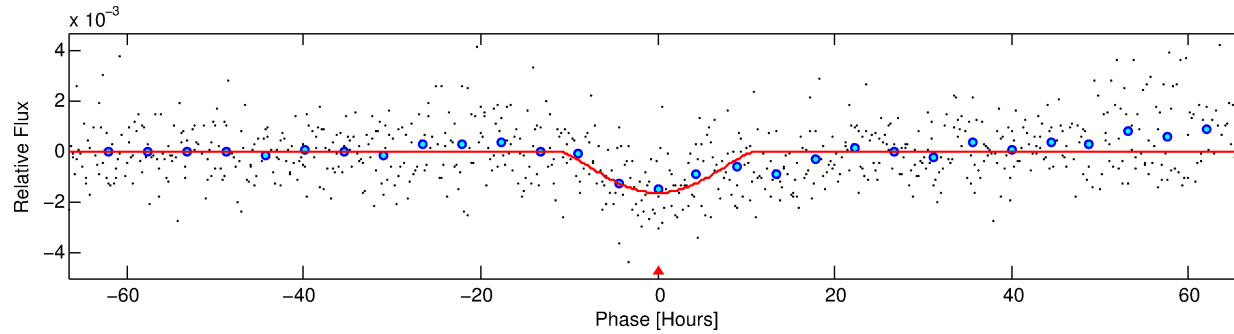
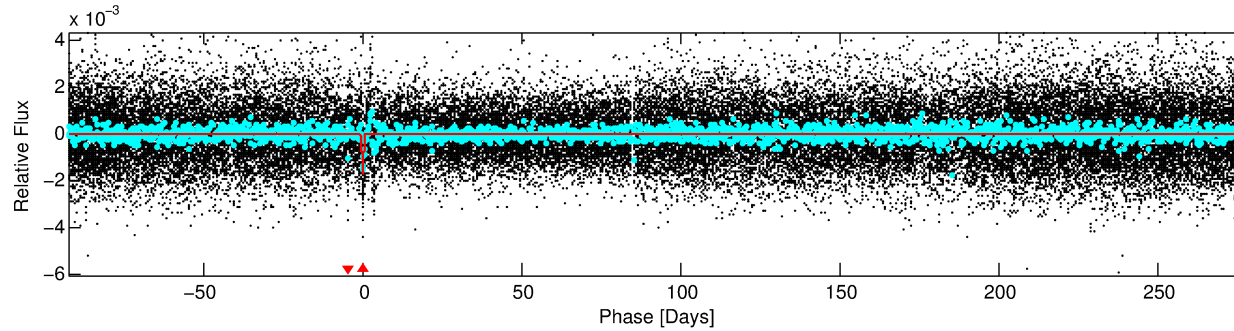
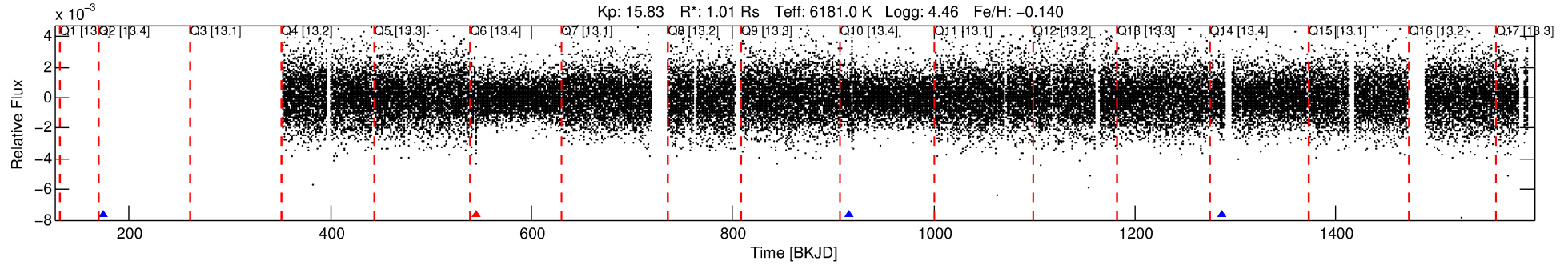
See http://exoplanetarchive.ipac.caltech.edu/docs/API_kepcandidate_columns.html#proj_disp_col for comment definitions.

Ephemeris Match Information For 008556302-01

No Significant Match Found

DV One-Page Summary

KIC: 8556302 Candidate: 1 of 1 Period: 370.940 d



DV Fit Results:

Period = 370.93993 [0.03140] d
Epoch = 174.0860 [0.0637] BKJD
Rp/R* = 0.0693 [0.2513]
a/R* = 48.41 [39.74]
b = 1.00 [0.38]
Seff = 1.24 [0.51]
Teq = 269 [28] K
Rp = 7.60 [27.70] Re
a = 1.0351 [0.2753] AU
Ag = 6098.78 [44379.76] [0.14 σ]
Teffp = 3673 [6674] K [0.51 σ]

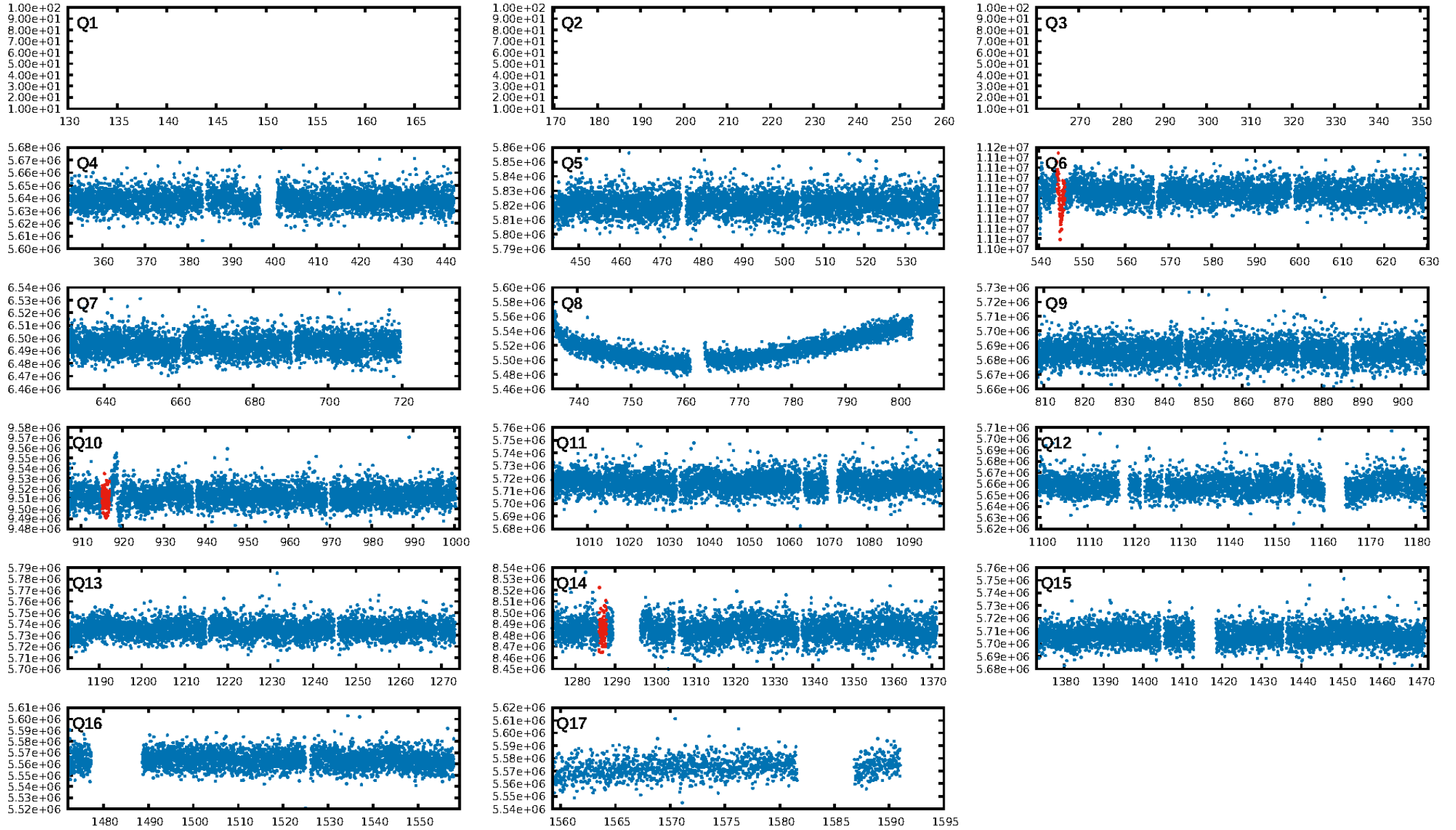
DV Diagnostic Results:

ShortPeriod-sig: N/A
LongPeriod-sig: N/A
ModelChiSquare2-sig: 0.0%
ModelChiSquareGof-sig: 99.5%
Bootstrap-pfa: 1.87e-32
RollingBand-fgt: 0.67 [2/3]
GhostDiagnostic-chr: -1.367
Centroid-sig: 0.5%
Centroid-so: 1.205 arcsec [1.05 σ]
OotOffset-rm: 0.709 arcsec [0.75 σ]
KicOffset-rm: 0.644 arcsec [0.45 σ]
OotOffset-st: 3/0/0/0 [3]
KicOffset-st: 3/0/0/0 [3]
DiffImageQuality-fgm: 0.33 [1/3]
DiffImageOverlap-fno: 1.00 [3/3]

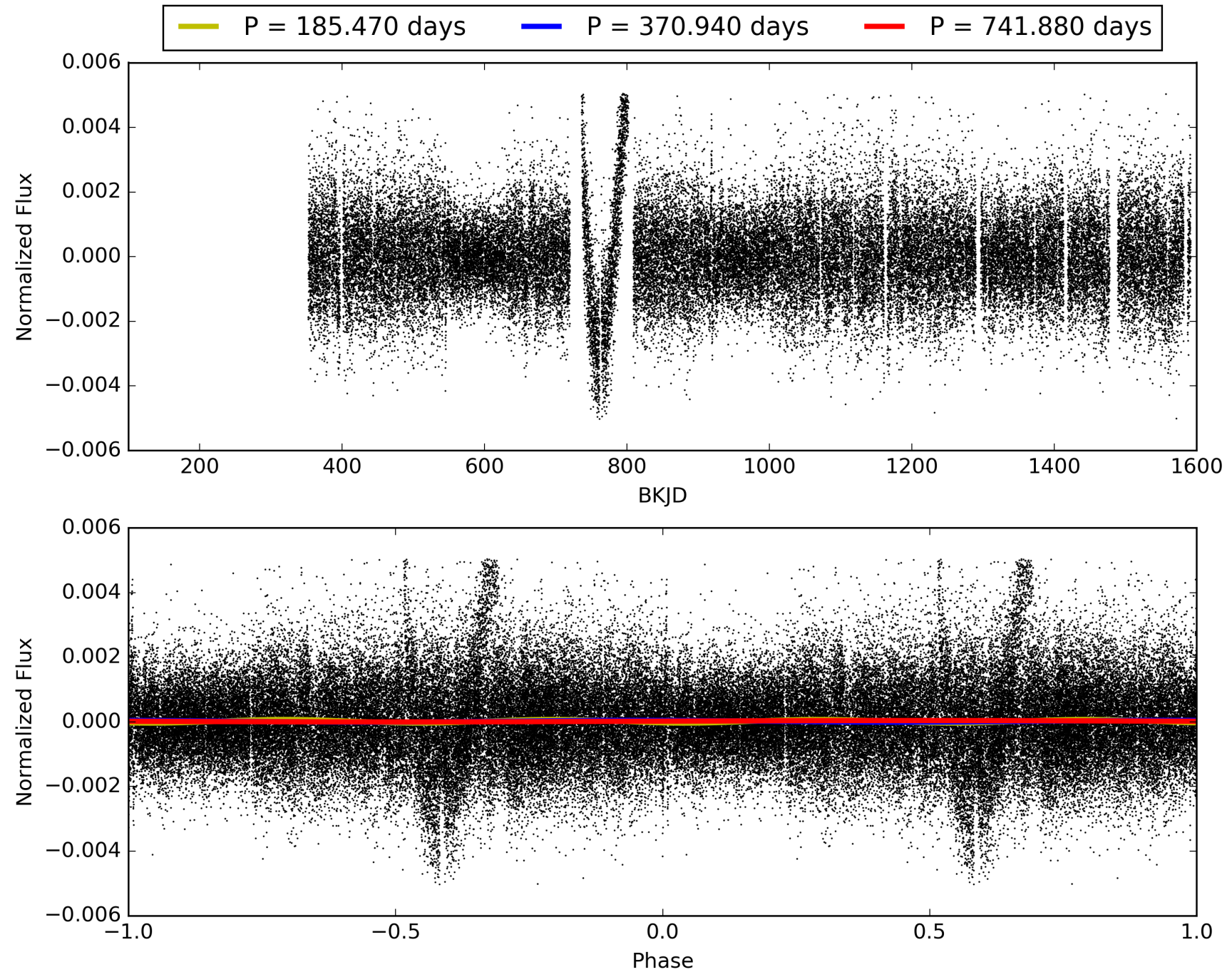
Software Revision: svn+ssh://murzim/repo/soc/tags/release/9.3.42@60958 -- Date Generated: 30-Jan-2016 13:42:23 Z

This Data Validation Report Summary was produced in the Kepler Science Operations Center Pipeline at NASA Ames Research Center

TCE 008556302-01, PDC Light Curves

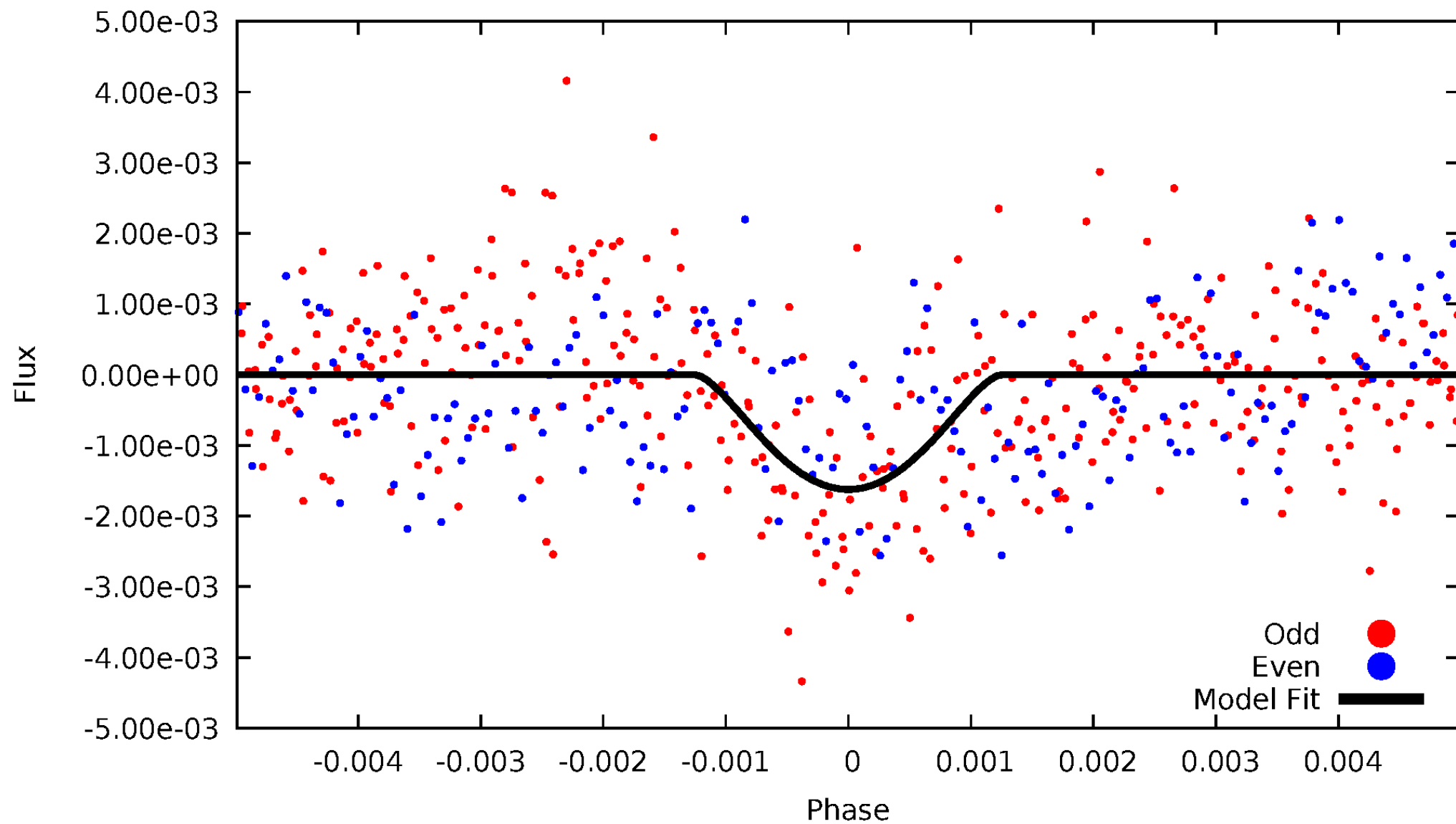


TCE 008556302-01



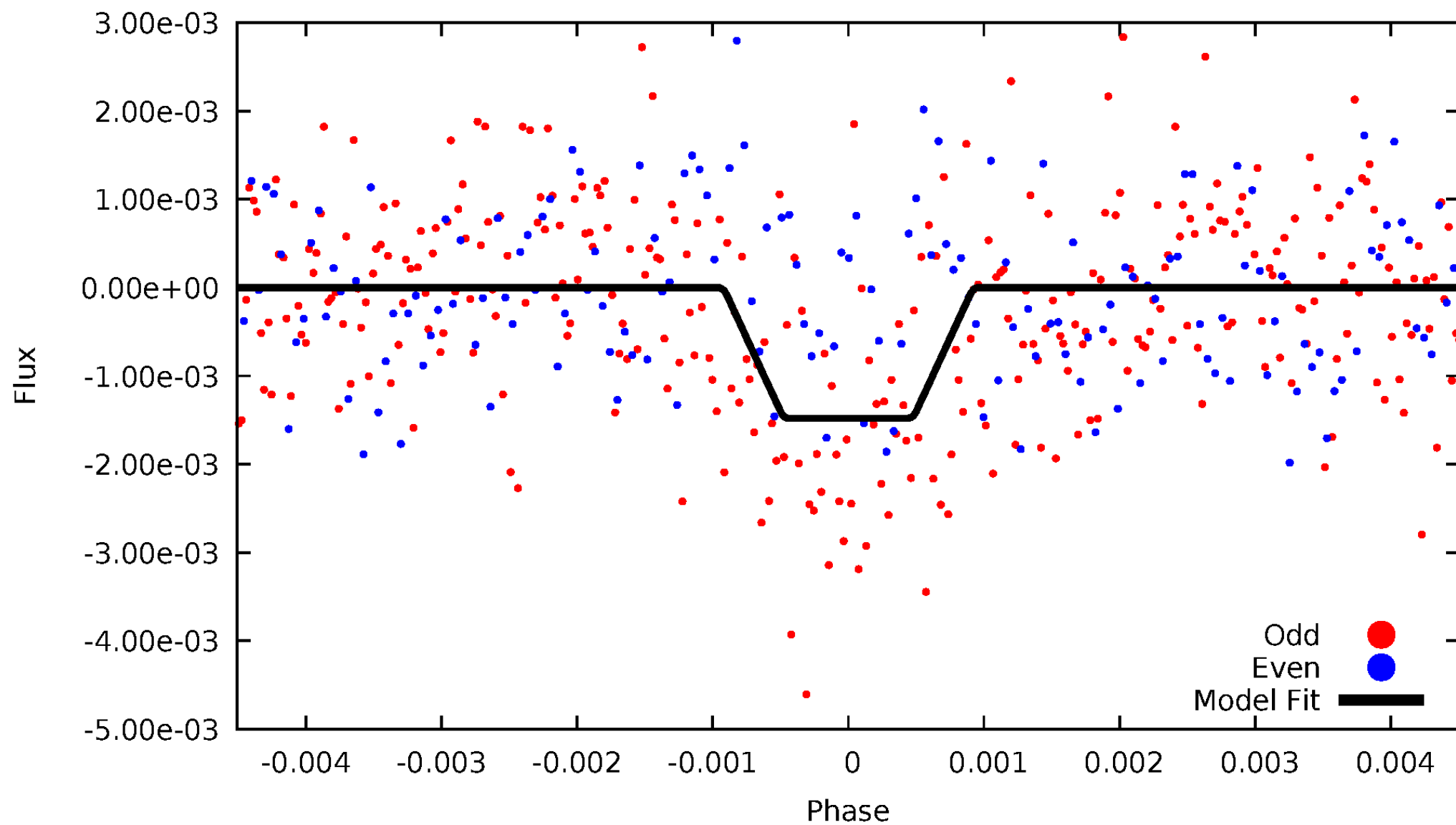
DV Odd/Even

TCE 008556302-01



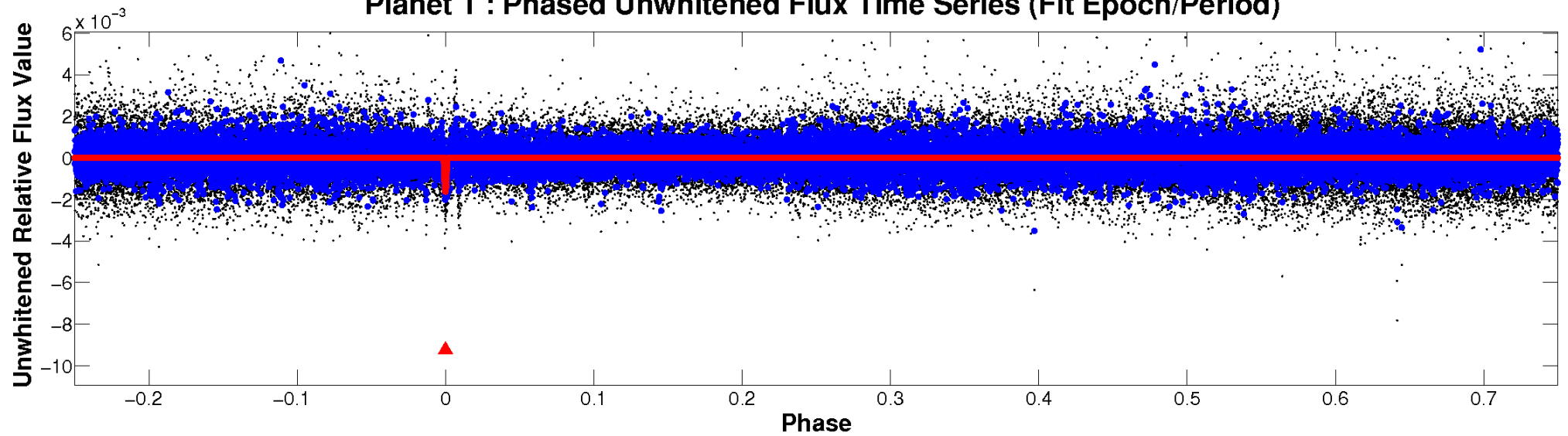
ALT Odd/Even

TCE 008556302-01

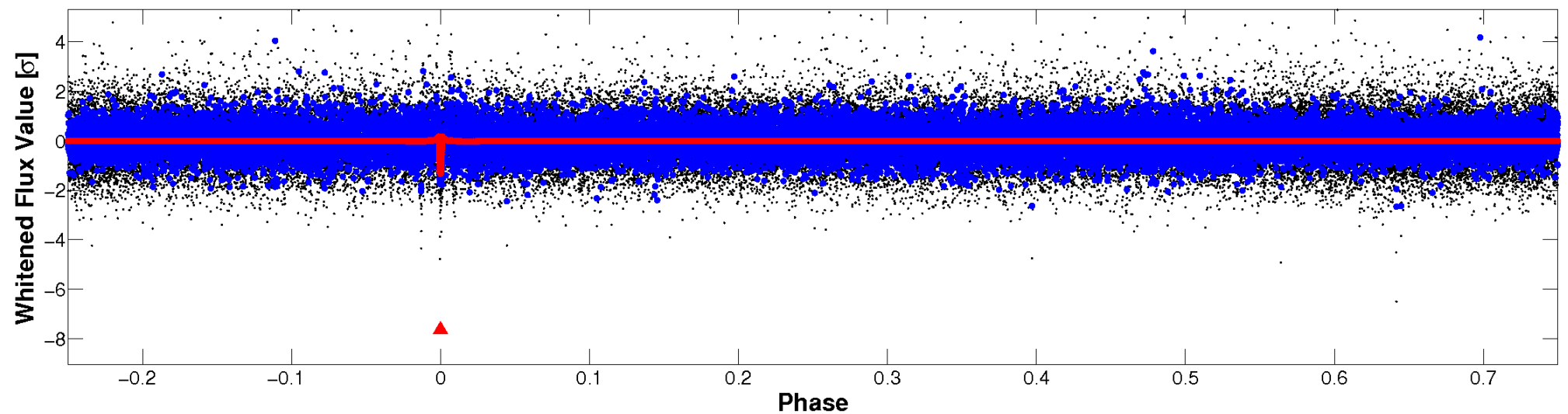


Non-Whitened Vs. Whitened Light Curve

Planet 1 : Phased Unwhitened Flux Time Series (Fit Epoch/Period)

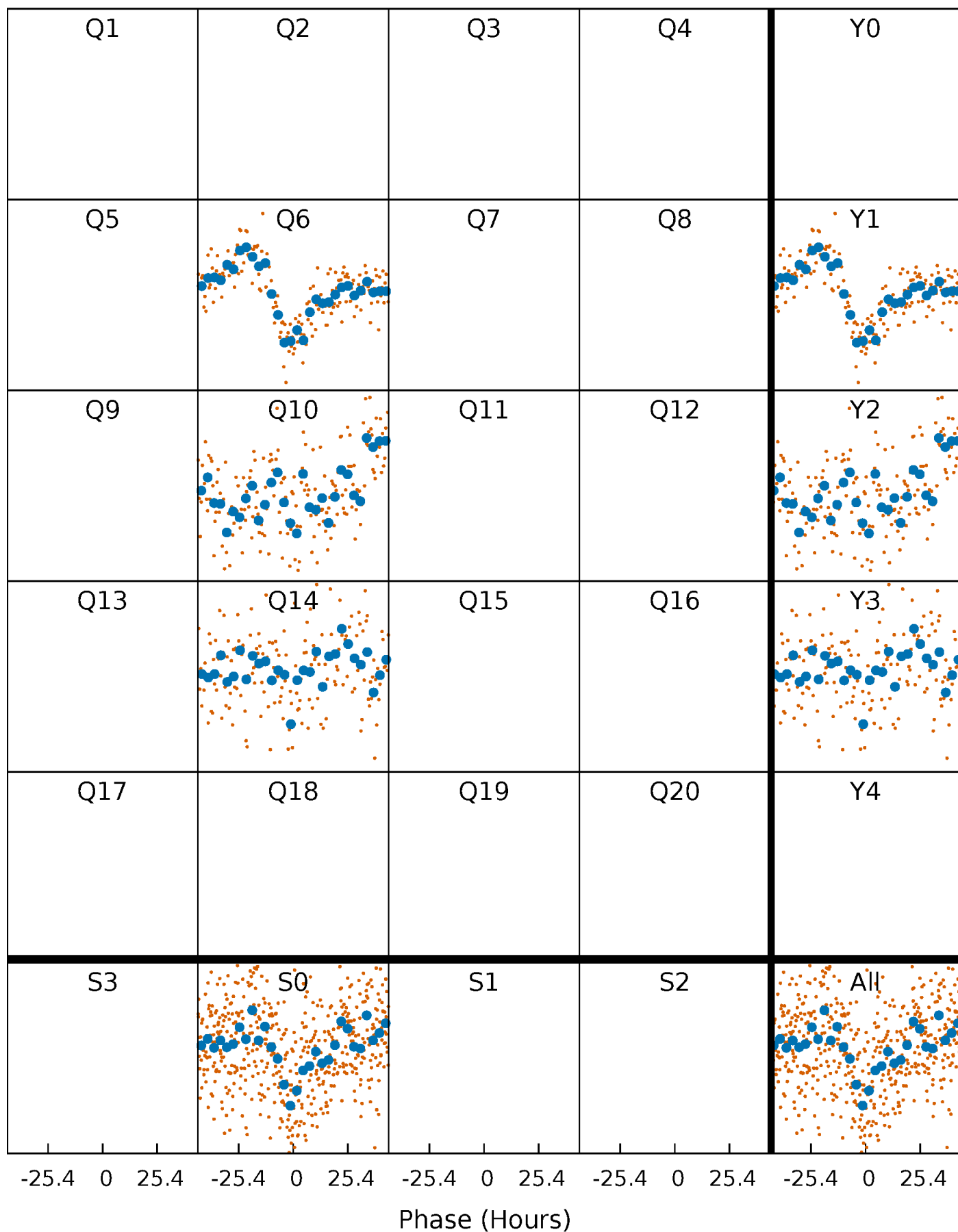


Planet 1 : Phased Whitened Flux Time Series (Fit Epoch/Period)



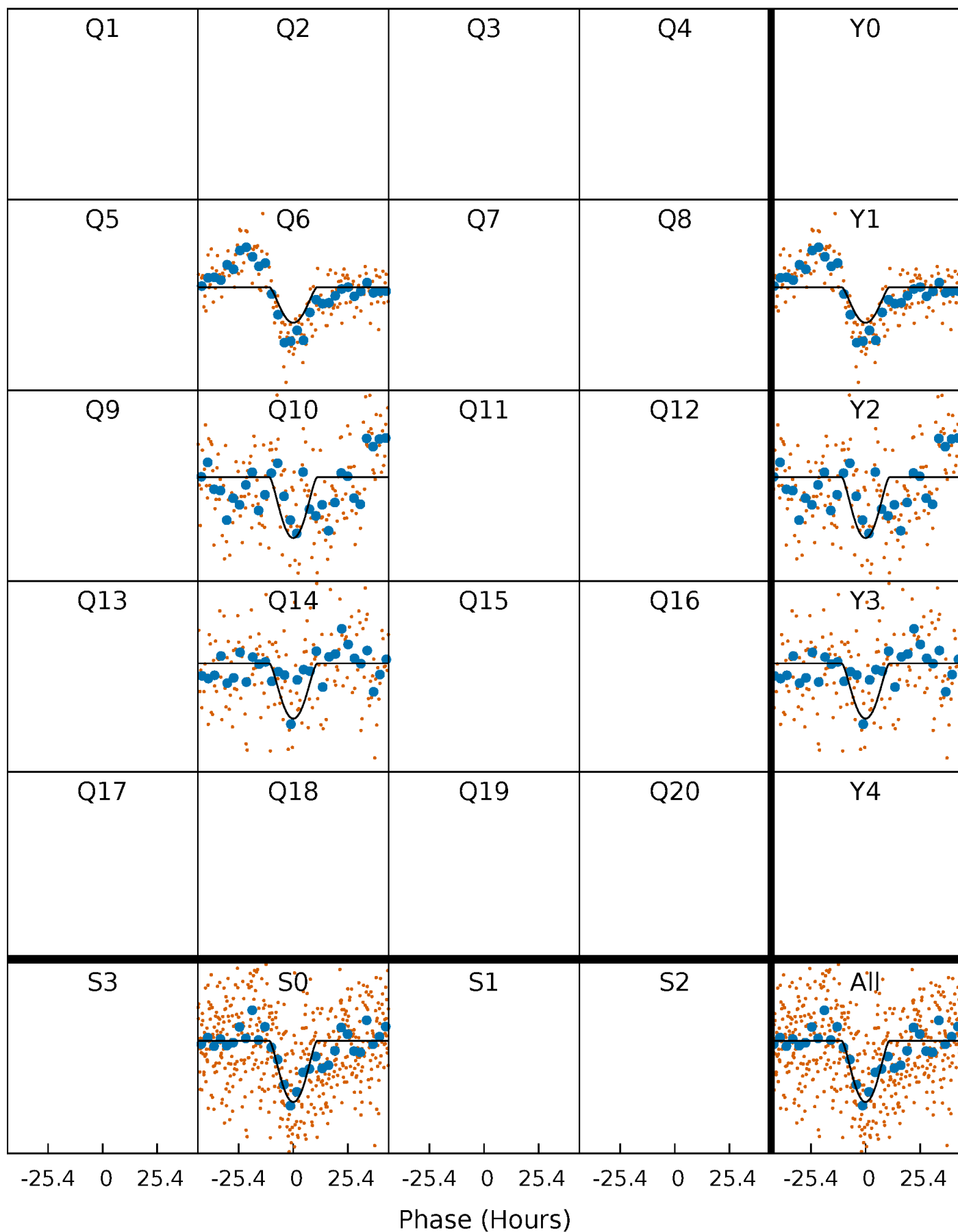
PDC Quarter-Phased Transit Curves

TCE 008556302-01 $P=370.939929$ Days $T_0=174.085958$ (BKJD)



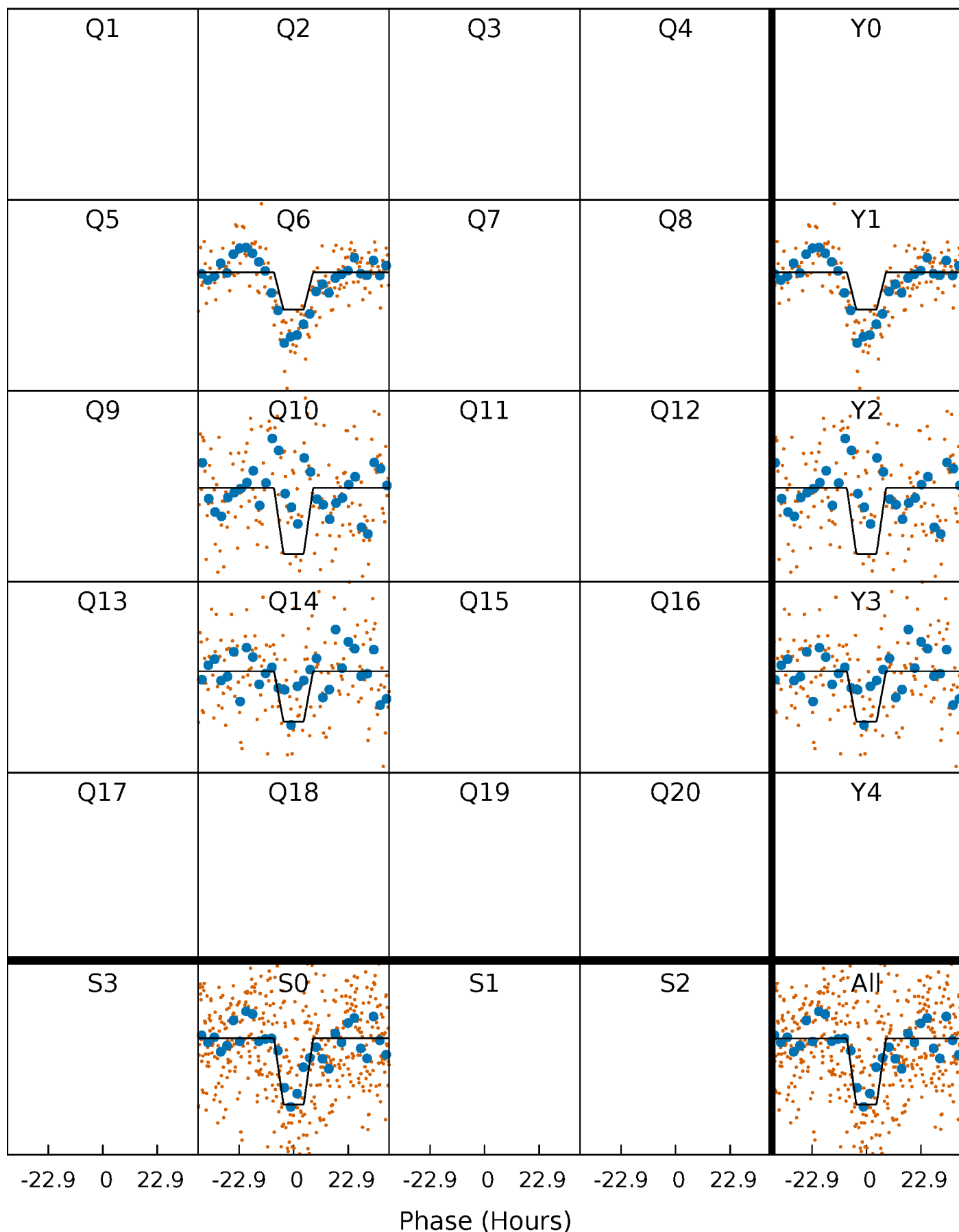
DV Quarter-Phased Transit Curves

TCE 008556302-01 P=370.939929 Days $T_0=174.085958$ (BKJD)



Alt. Detrend Quarter-Phased Transit Curves

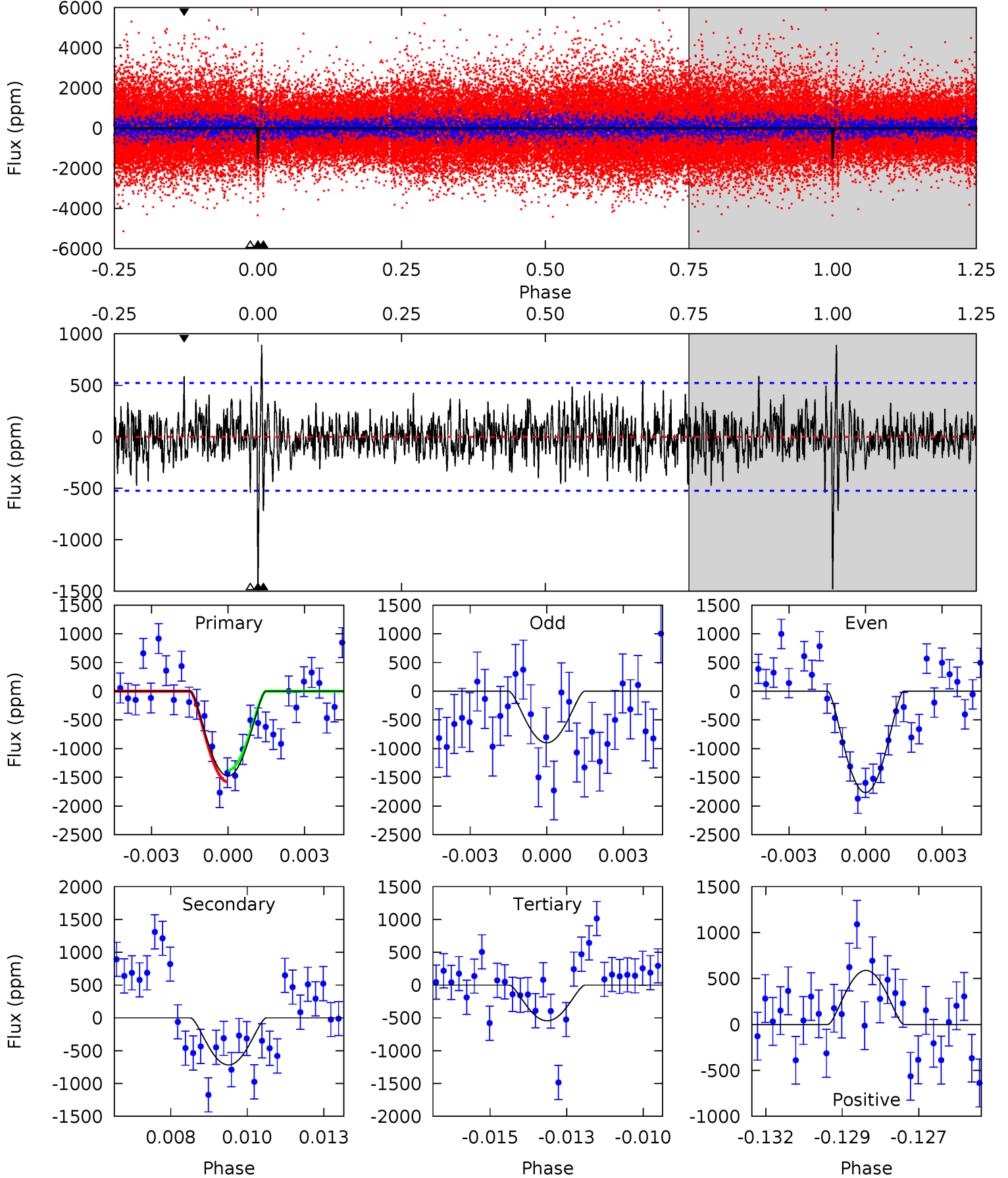
TCE 008556302-01 P=370.957659 Days $T_0=174.042592$ (BKJD)



DV Model-Shift Uniqueness Test

008556302-01, P = 370.939929 Days, E = 174.085958 Days

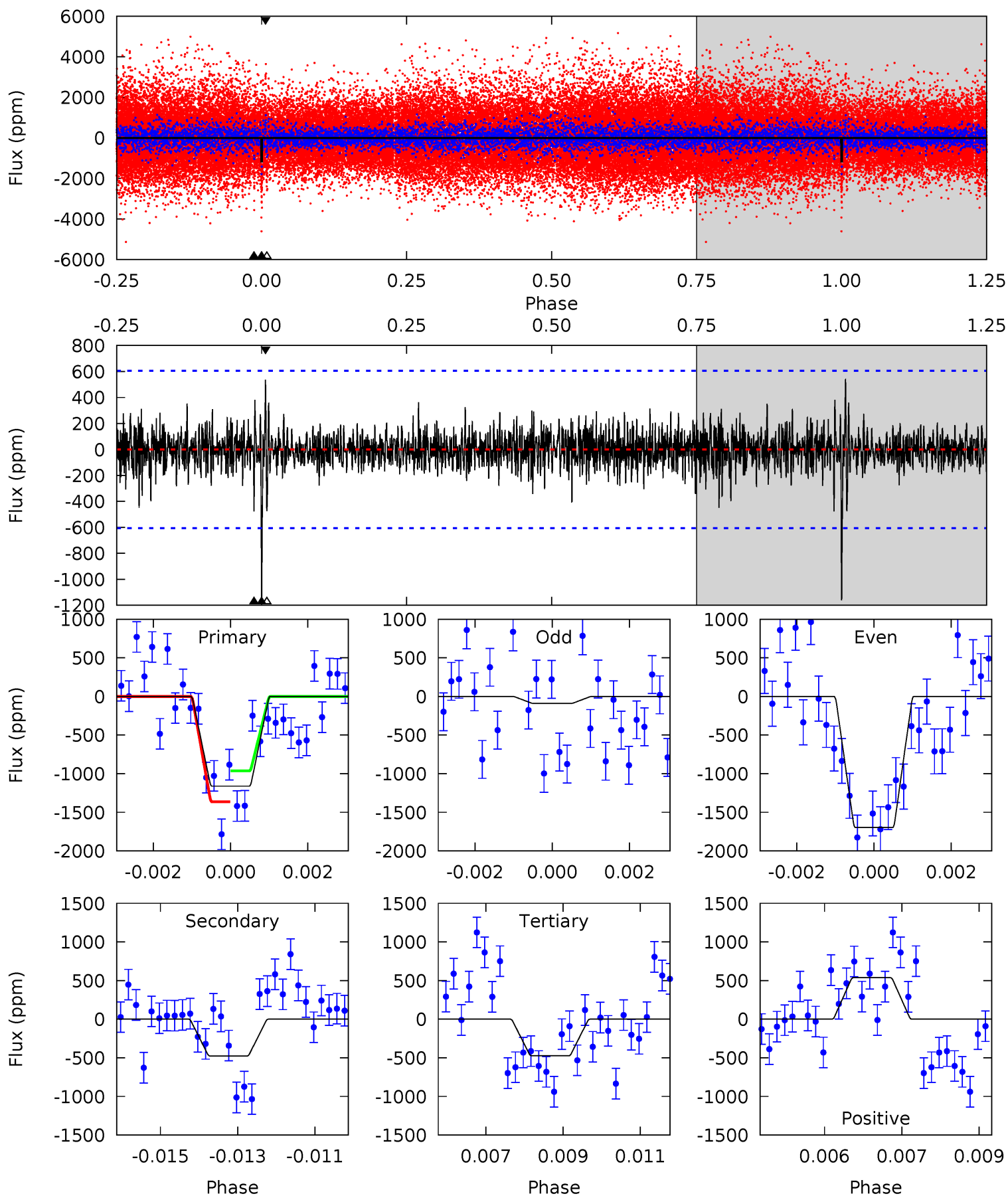
Pri	Sec	Ter	Pos	FA ₁	FA ₂	F _{Red}	Pri-Ter	Pri-Pos	Sec-Ter	Sec-Pos	Odd-Evn	DMM	Shape	TAT
14.9	7.25	5.51	5.94	5.28	3.02	1.60	9.43	8.99	1.75	1.31	4.09	1.64	0.38	1.04



Alt Model-Shift Uniqueness Test

008556302-01, $P = 370.957659$ Days, $E = 174.042592$ Days

Pri	Sec	Ter	Pos	FA ₁	FA ₂	F _{Red}	Pri-Ter	Pri-Pos	Sec-Ter	Sec-Pos	Odd-Evn	DMM	Shape	TAT
10.2	4.20	4.18	4.73	5.34	3.11	0.94	6.05	5.50	0.01	-0.54	6.66	1.61	0.32	1.77



Stellar Parameters For KIC 008556302

	$T_{\text{eff}}(K)$	$\log(g)$	[Fe/H]	$R (R_{\odot})$	$M(M_{\odot})$	$p_{\star} (\text{g}\cdot\text{cm}^{-3})$
	6181^{+196}_{-240}	$4.464^{+0.065}_{-0.208}$	$-0.140^{+0.250}_{-0.300}$	$1.006^{+0.321}_{-0.107}$	$1.074^{+0.144}_{-0.144}$	$1.488^{+0.422}_{-0.788}$
	+3%/-4%	+1%/-5%	+179%/-214%	+32%/-11%	+13%/-13%	+28%/-53%
Source	KIC0	KIC0	KIC0	DSEP		

KIC = Kepler Input Catalog; PHO = Photometry; SPE = Spectroscopy; AST = Asteroseismology
 TRA = Transits; DESP = Dartmouth Models; MULT = Multiple Models

Secondary Eclipse Parameters for KIC 008556302-01 / KOI

Detrend	Depth (ppm)	$R_p (R_{\oplus})$	$T_{max} (K)$	$T_{obs} (K)$	A_{obs}
DV	-718 ± 99	$23.54^{+22.78}_{-16.60}$	383^{+28}_{-19}	2934^{+1377}_{-494}	759^{+7729}_{-569}
Alt.	-476 ± 113	$21.53^{+22.88}_{-14.85}$	382^{+30}_{-22}	2816^{+1200}_{-478}	557^{+4849}_{-425}

T_{max} = Theoretical Maximum Planetary Temperature
 T_{obs} = Observed Planetary Temperature (Assuming A=0.3)
 A_{obs} = Observed Albedo (Assuming T=0)

If a secondary eclipse is present, the system is likely an EB if $T_{obs} \gg T_{max}$ AND $A_{obs} \gg 1.0$

DV Centroid Data

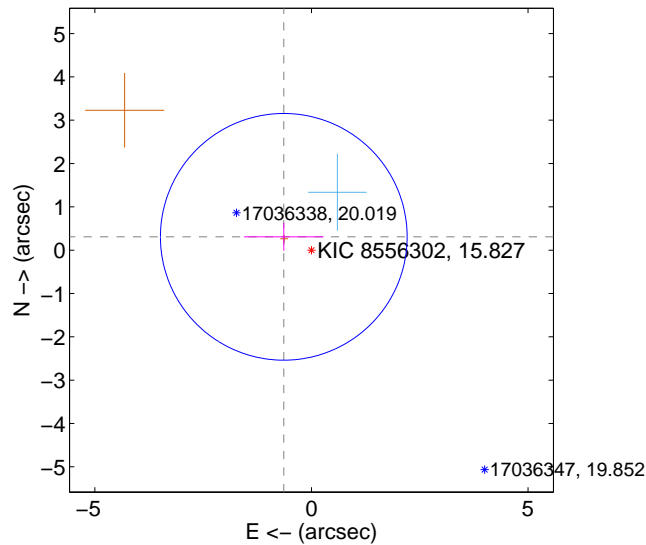
Supplemental centroid analysis for 008556302-01. Kepler magnitude: 15.83. Transit SNR 9.79

There are 1 quarters with good PRF difference image offsets

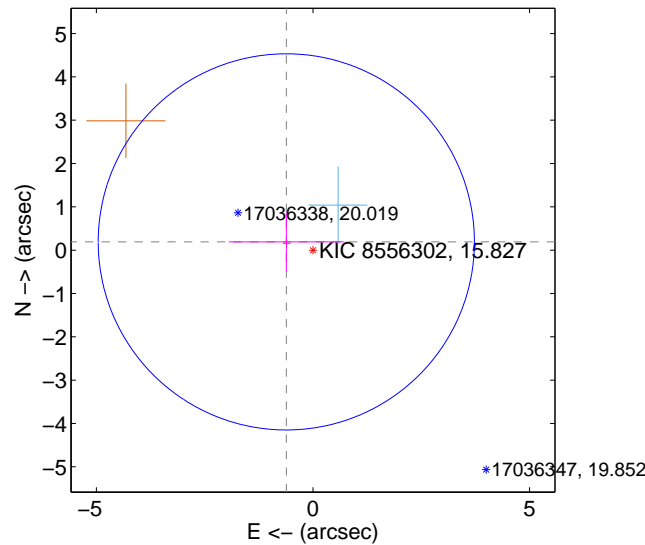
The direct PRF centroid is offset from the target star catalog position by about 0.30 arcsec

	Distance in arcsec	Distance / σ	Δ RA	Δ Dec
PRF-fit source offset from OOT	0.709 ± 0.949	0.75	0.638 ± 0.918	0.308 ± 0.323
PRF-fit source offset from KIC position	0.644 ± 1.447	0.45	0.616 ± 1.326	0.191 ± 0.678
photometric centroid source offset	1.21 ± 1.15	1.05	-0.61 ± 1.24	1.04 ± 1.12

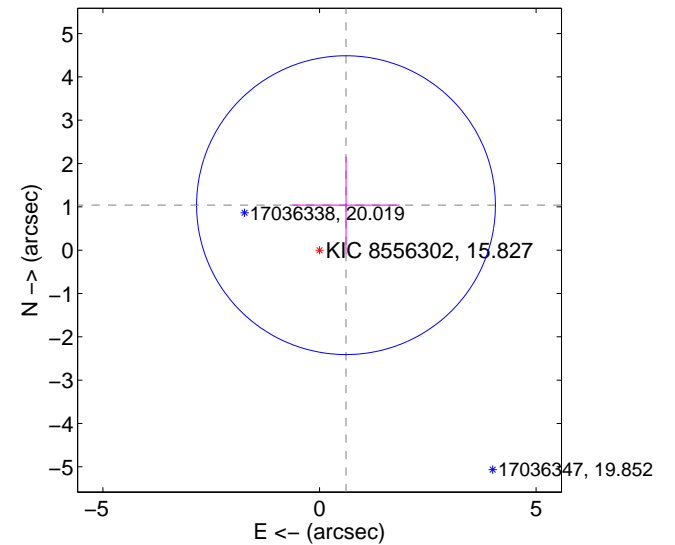
offset from difference PRF-fit to OOT PRF-fit



offset from difference PRF-fit to KIC position



offset from photometric centroids

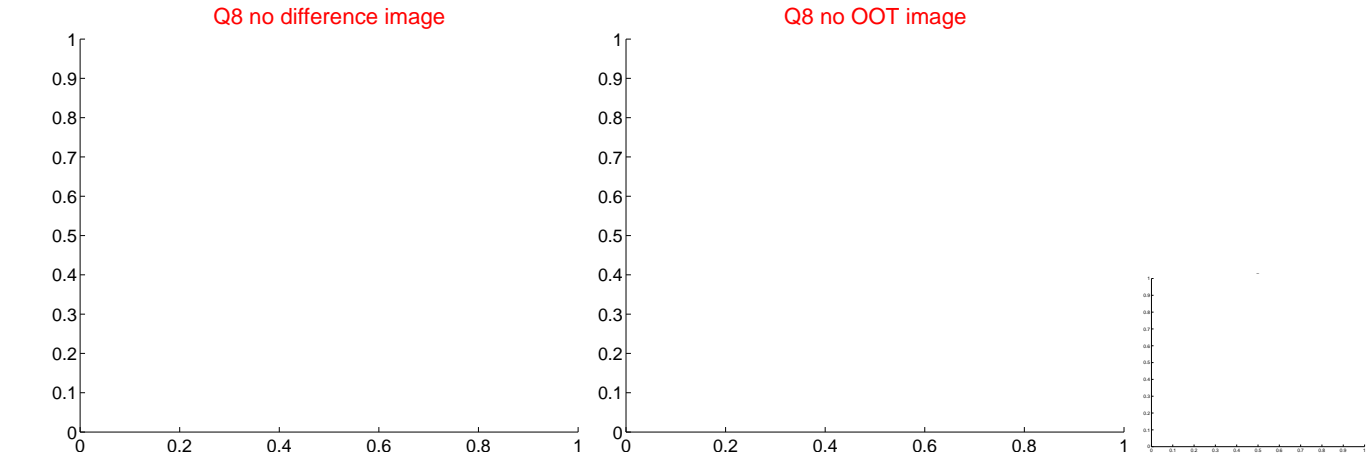
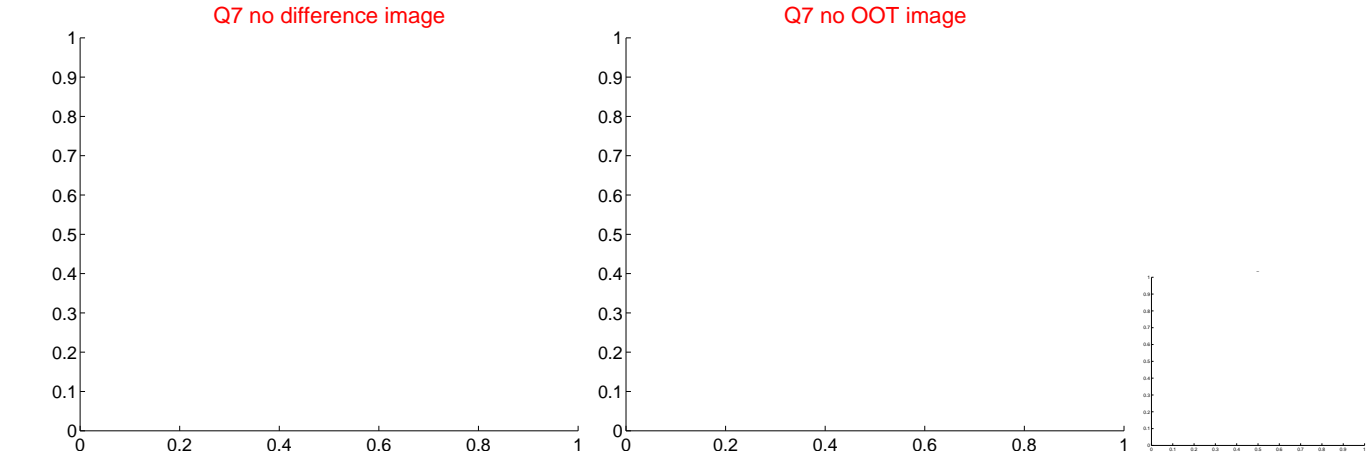
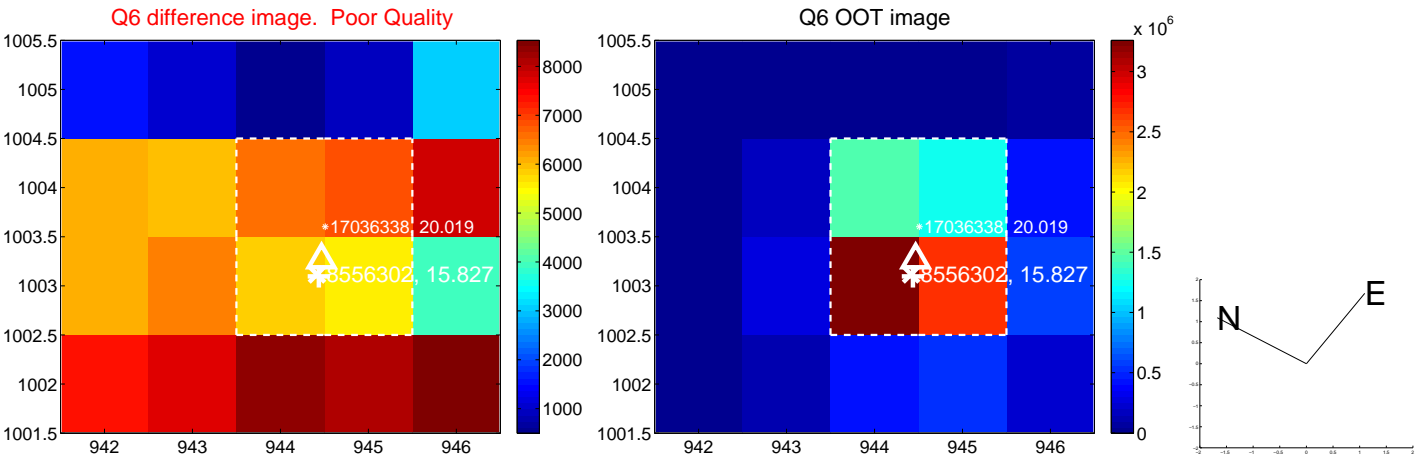
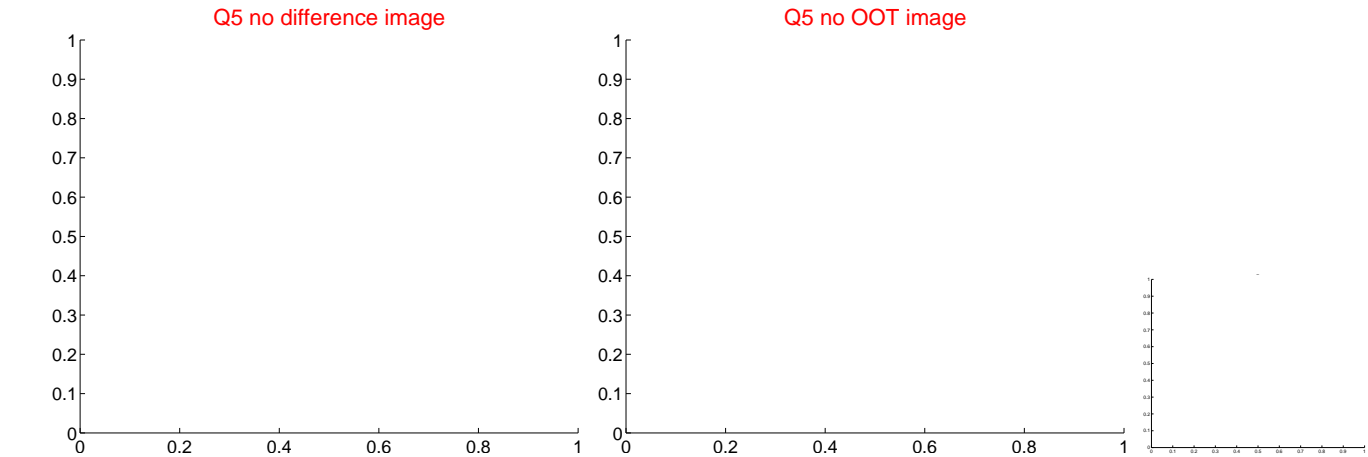


Centroid source offsets from the target star reconstructed from PRF and photometric centroids. Sky blue crosses: good quarterly centroid offsets; Vermillion crosses: bad quarterly centroid offsets; magenta cross: average over quarters. Length of the crosses: one- σ uncertainty. Blue circle: three- σ . Red *: target star. Blue *: Other stars. Text next to a star gives its KIC ID and kepmag. KIC IDs > 15,000,000 are from the UKIRT catalog.

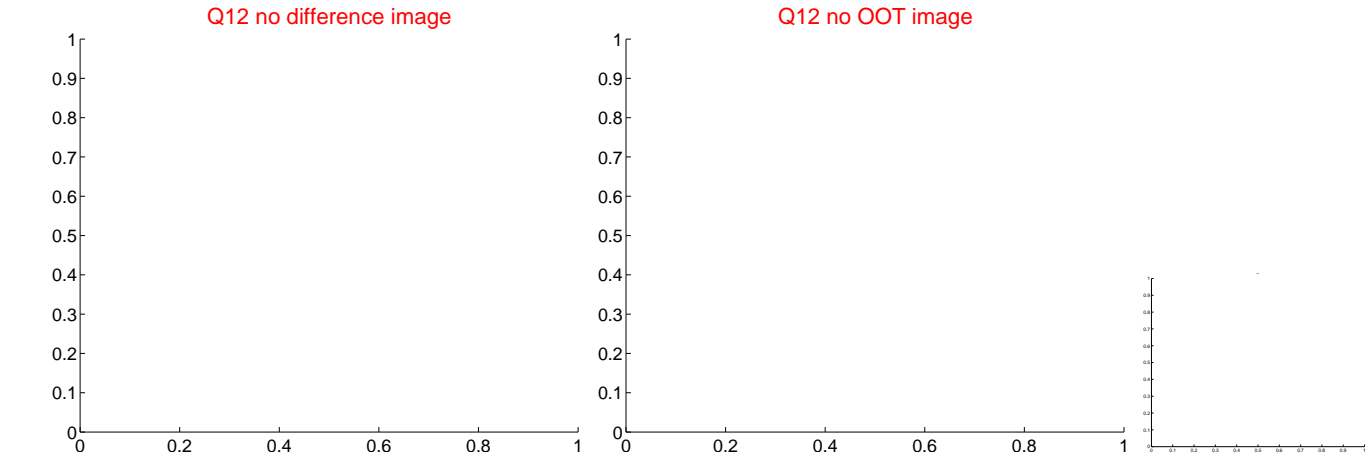
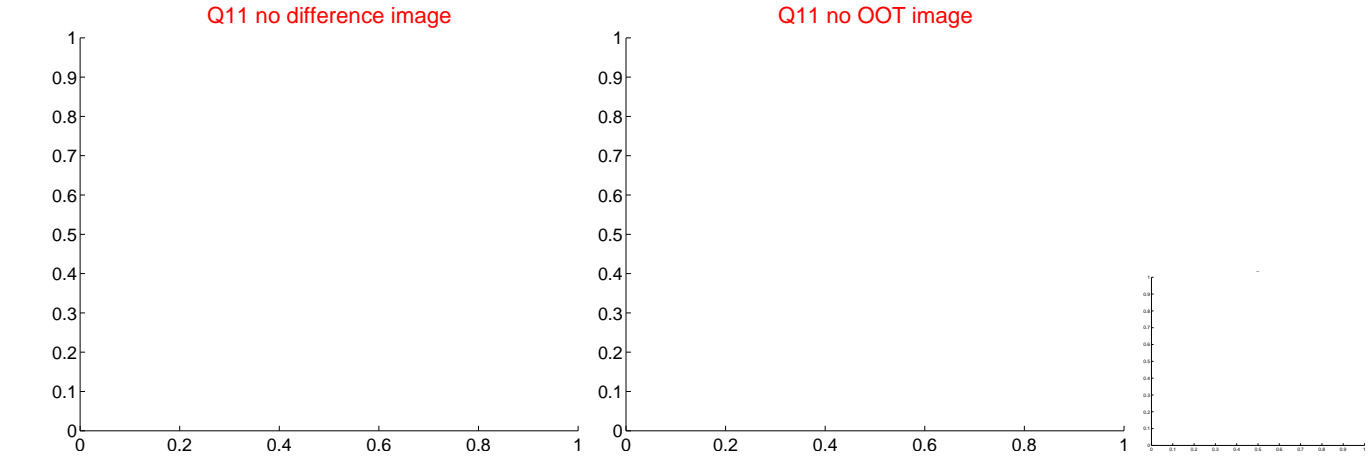
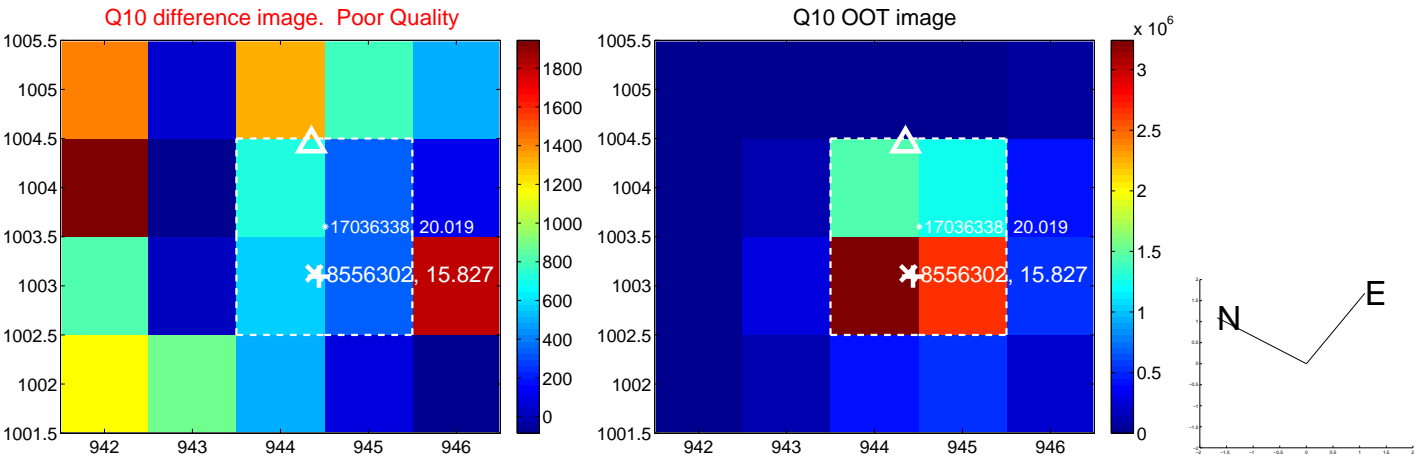
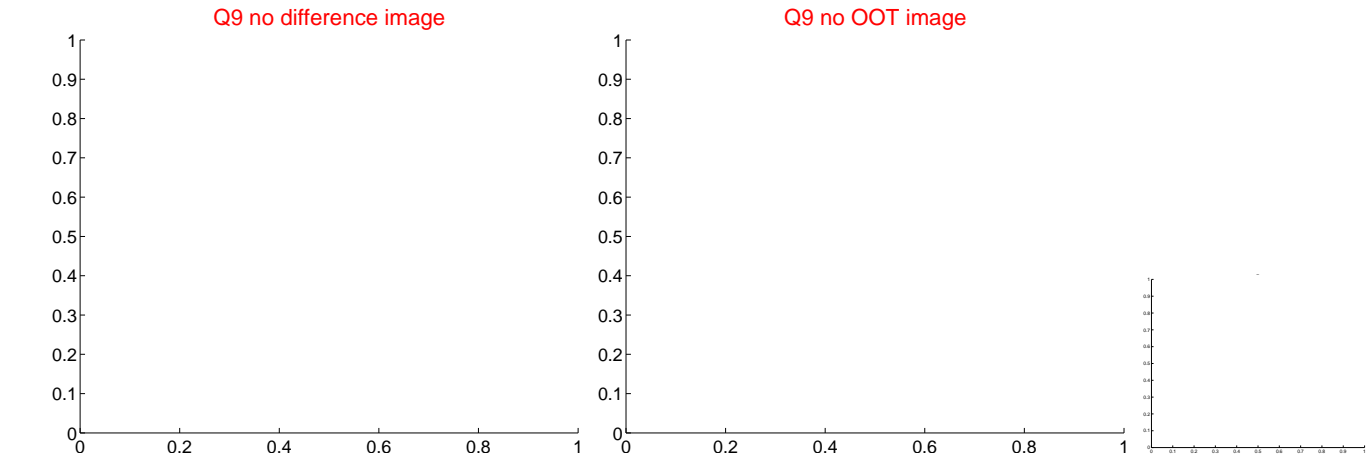
white \times : KIC target position; $+$: OOT centroid; \triangle : difference centroid. red \times : large negative pixel value.



white \times : KIC target position; $+$: OOT centroid; \triangle : difference centroid. red \times : large negative pixel value.



white ×: KIC target position; +: OOT centroid; △: difference centroid. red ✕: large negative pixel value.



white \times : KIC target position; $+$: OOT centroid; Δ : difference centroid. red \times : large negative pixel value.

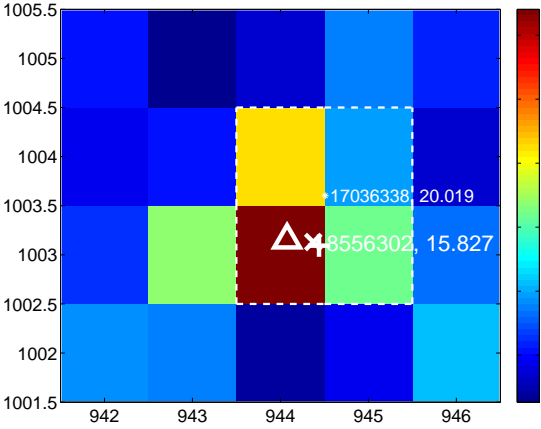
Q13 no difference image



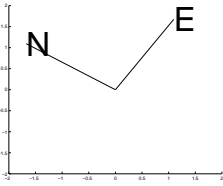
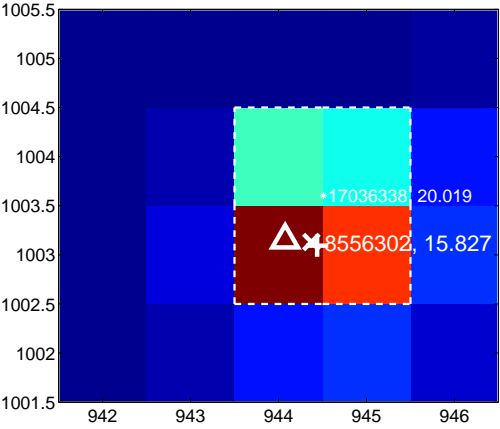
Q13 no OOT image



Q14 difference image



Q14 OOT image



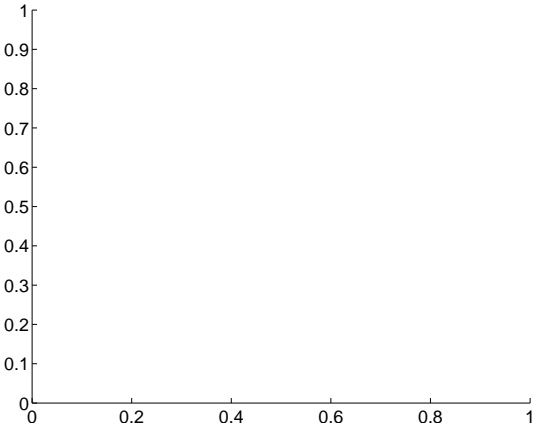
Q15 no difference image



Q15 no OOT image



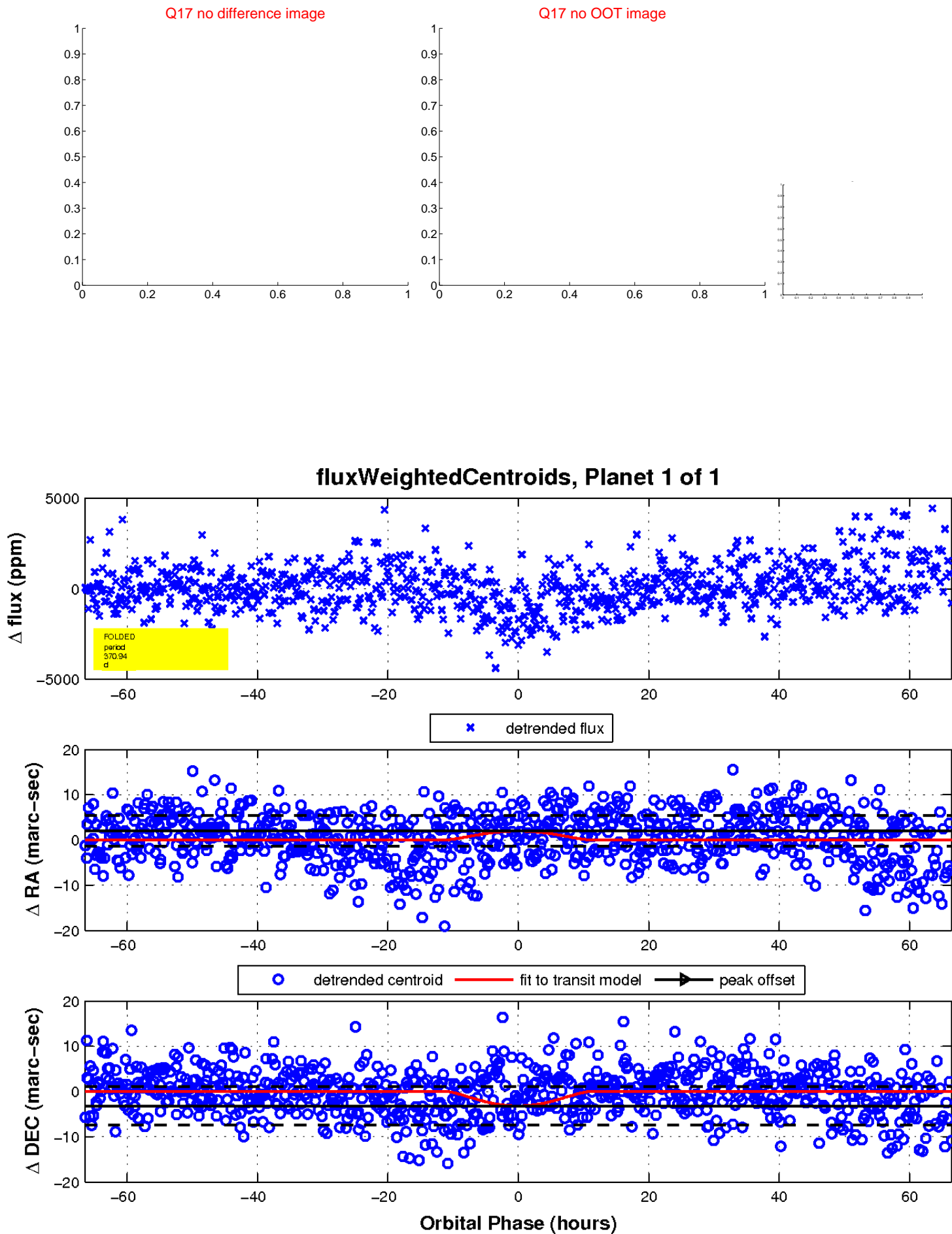
Q16 no difference image



Q16 no OOT image



white \times : KIC target position; $+$: OOT centroid; \triangle : difference centroid. red \times : large negative pixel value.



UKIRT Image

Declination

