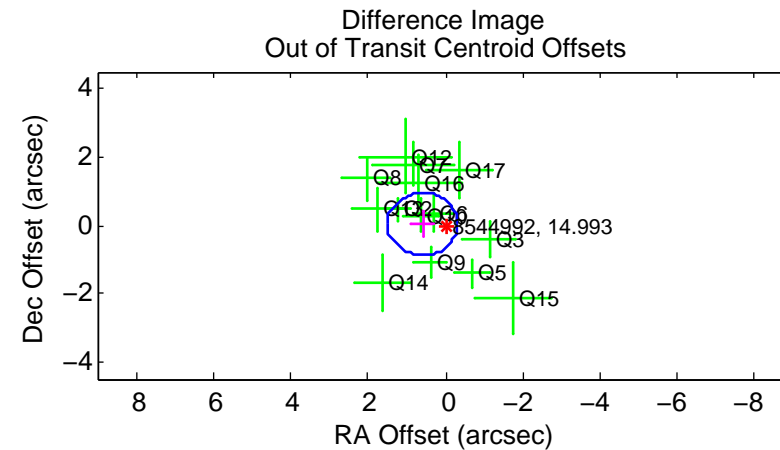
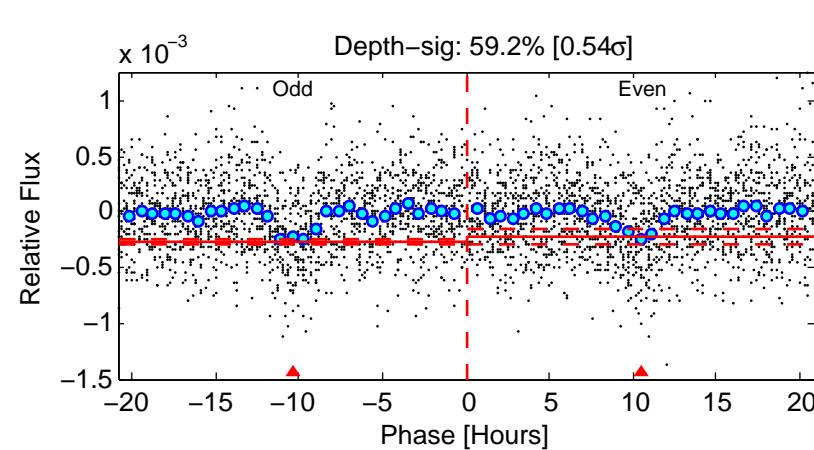
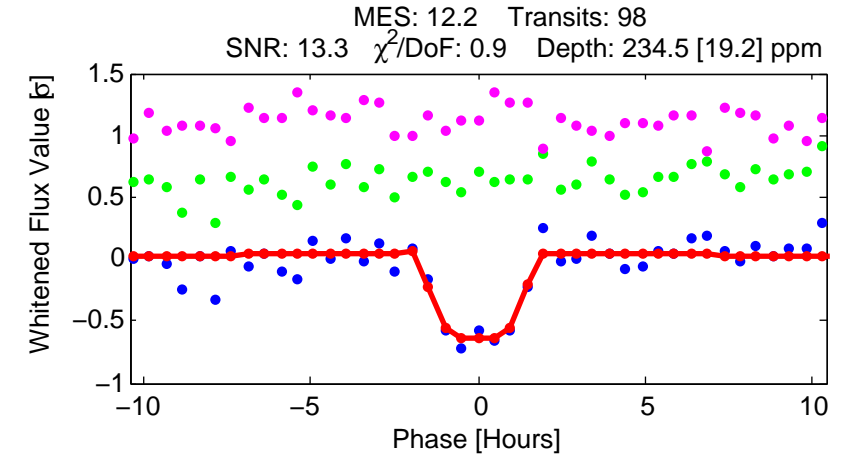
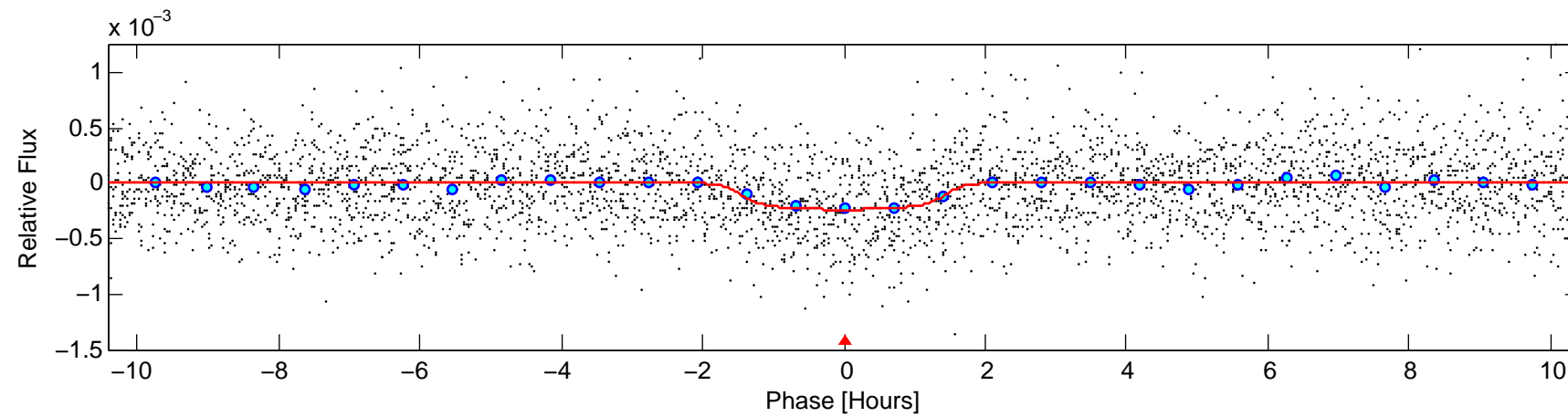
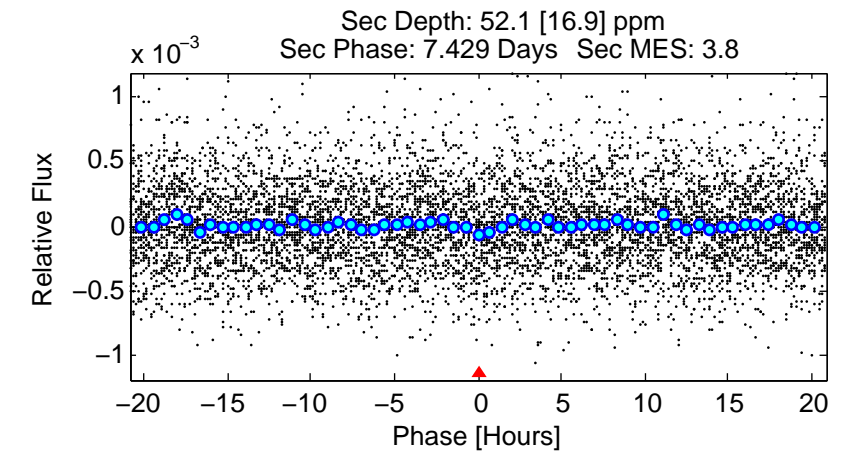
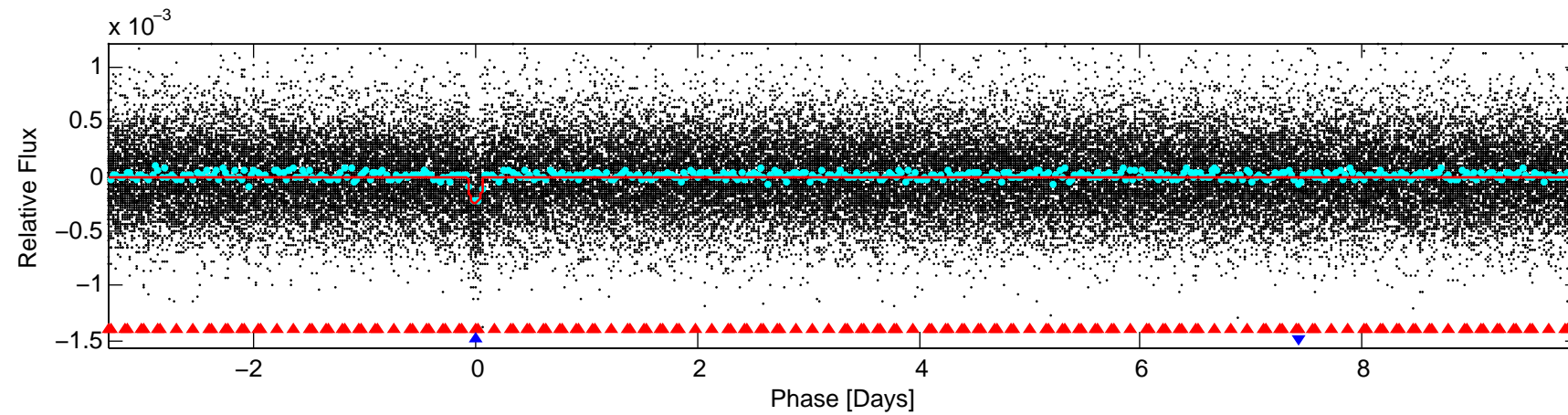
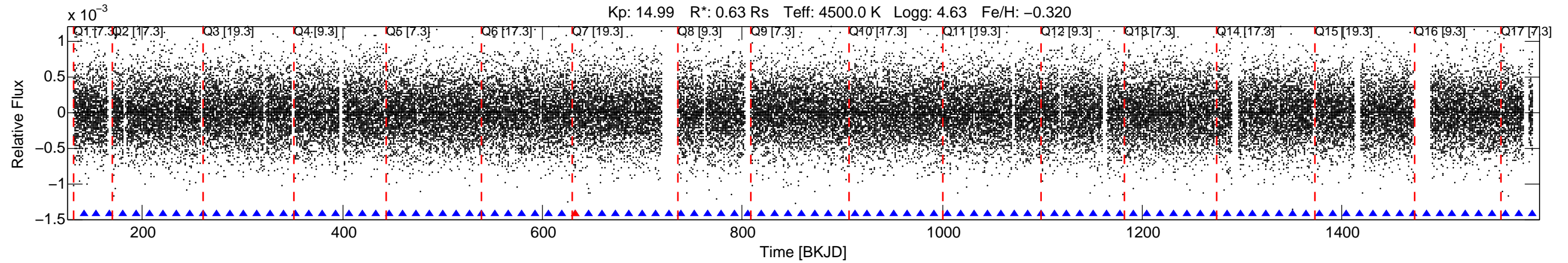


KIC: 8544992 Candidate: 2 of 2 Period: 13.297 d  
 KOI: K02466.02 Name: Kepler-388c Corr: 0.972



#### DV Fit Results:

Period = 13.29716 [0.00009] d  
 Epoch = 140.9457 [0.0055] BKJD  
 Rp/R\* = 0.0185 [0.0029]  
 a/R\* = 11.16 [6.69]  
 b = 0.94 [0.07]  
 Seff = 16.66 [2.51]  
 Teq = 515 [19] K  
 Rp = 1.28 [0.23] Re  
 a = 0.0940 [0.0065] AU  
 Ag = 154.93 [71.18] [2.16σ]  
 Teffp = 2810 [327] K [7.01σ]

#### DV Diagnostic Results:

ShortPeriod-sig: 100.0% [60.74σ]  
 LongPeriod-sig: N/A  
 ModelChiSquare2-sig: 97.1%  
 ModelChiSquareGof-sig: 100.0%  
 Bootstrap-pfa: 8.93e-34  
 RollingBand-fgt: 0.99 [92/93]  
 GhostDiagnostic-chr: 14.51  
**Centroid-sig: 0.0%**  
 Centroid-so: 2.702 arcsec [2.68σ]  
 OotOffset-rm: 0.594 arcsec [1.95σ]  
 KicOffset-rm: 0.606 arcsec [2.05σ]  
 OotOffset-st: 4/3/3/4 [14]  
 KicOffset-st: 4/3/3/4 [14]  
 DiffImageQuality-fgm: 0.71 [10/14]  
 DiffImageOverlap-fno: 1.00 [17/17]