

KIC 008332200

Q1-17 DR25 TCE Parameters

TCE	Run Type	KOI?	Period (Days)	Epoch (BKJD)	Depth (ppm)	Duration (Hours)	MES	SNR	R_{\star} (R_{\odot})	T_{\star} (K)	R_p (R_{\oplus})	S_p (S_{\oplus})
008332200-01	OBS	No	348.909414	165.411924	344.7	19.178	8.1	9.0	1.19	5623	2.36	1.46

Robovetter Results

TCE	Run Type	Disp	Score	N	S	C	E	Comments
008332200-01	OBS	FP	0.00	1	0	0	0	INDIV_TRANS_MARSHALL—INCONSISTENT_TRANS—CENT_FEW_DIFFS

Notes: OBS = Observed. INJ = Injected. INV = Inverted. SCR = Scrambled.

N = Not Transit-Like. S = Stellar Eclipse. C = Centroid Offset. E = Ephemeris Match.

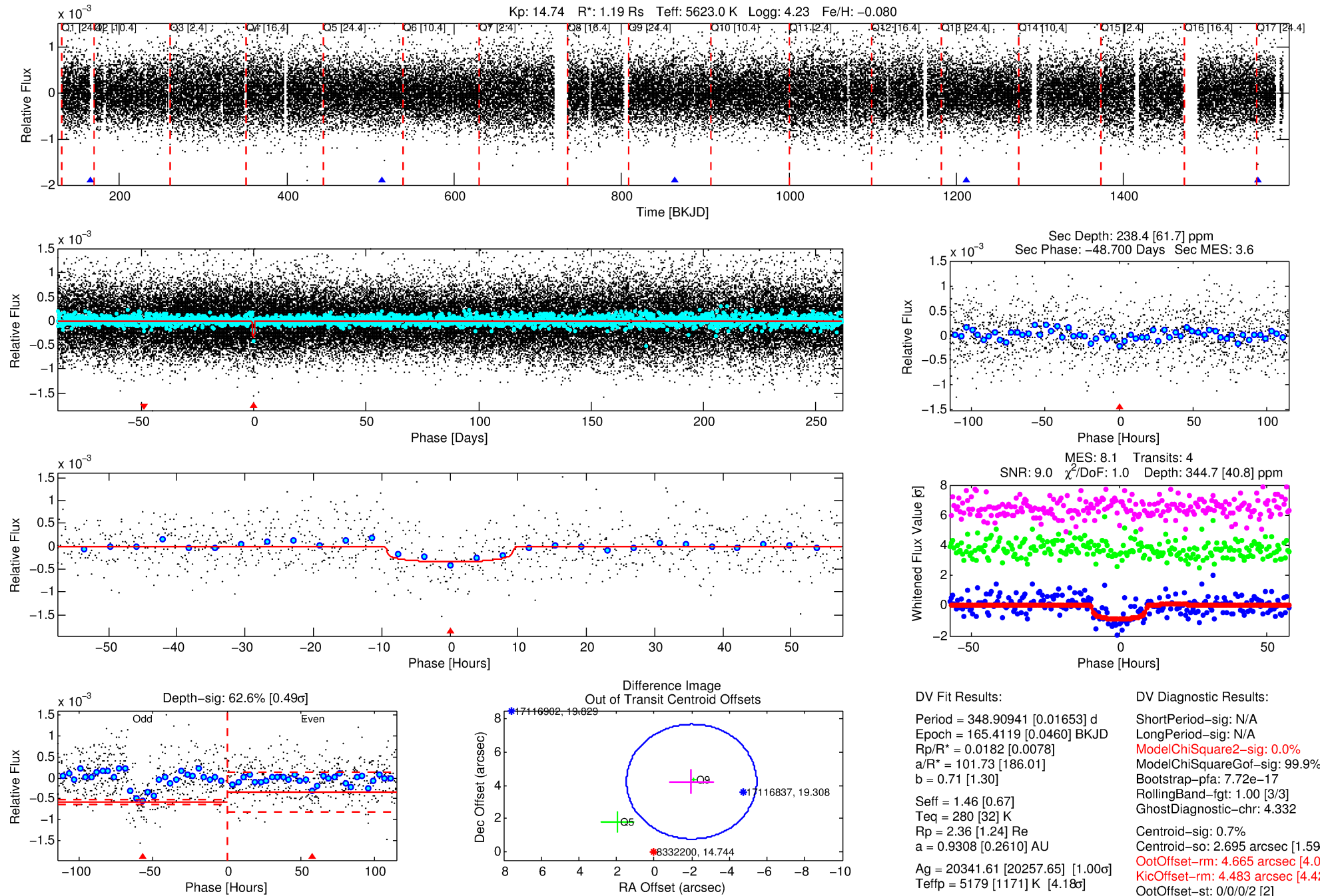
See http://exoplanetarchive.ipac.caltech.edu/docs/API_kepcandidate_columns.html#proj_disp_col for comment definitions.

Ephemeris Match Information For 008332200-01

No Significant Match Found

DV One-Page Summary

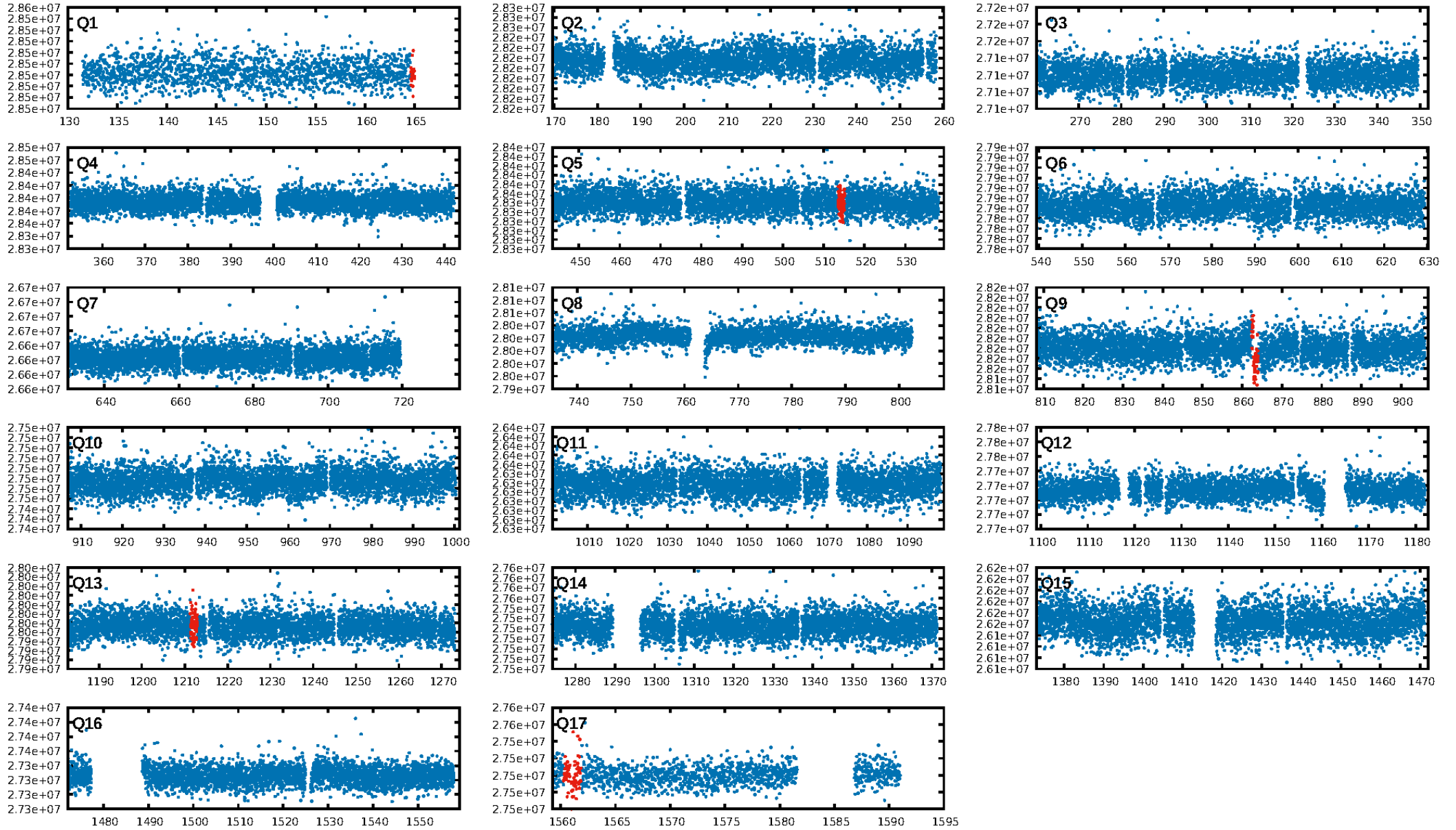
KIC: 8332200 Candidate: 1 of 1 Period: 348.909 d



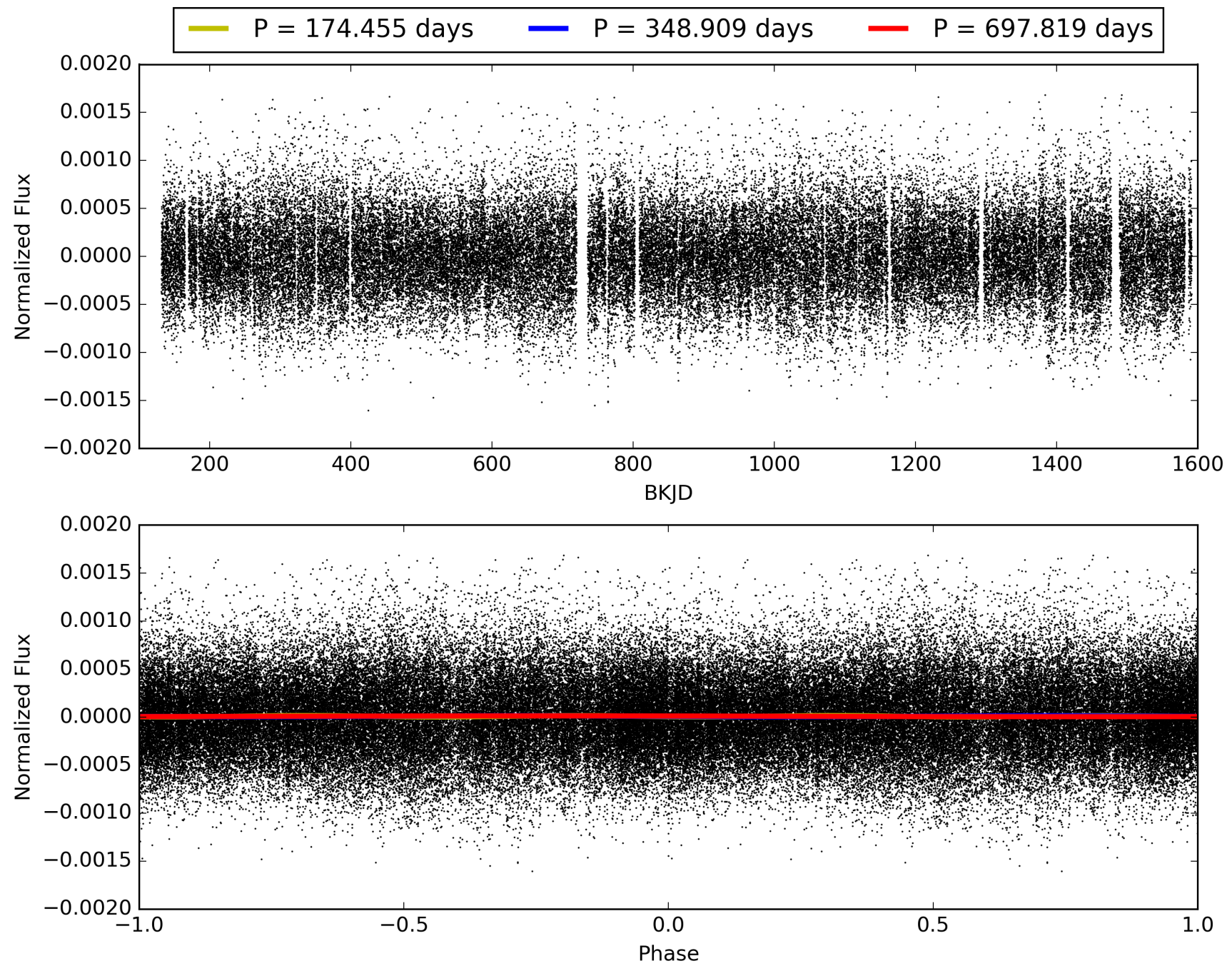
Software Revision: svn+ssh://murzim/repo/soc/tags/release/9.3.42@60958 -- Date Generated: 29-Jan-2016 22:17:57 Z

This Data Validation Report Summary was produced in the Kepler Science Operations Center Pipeline at NASA Ames Research Center

TCE 008332200-01, PDC Light Curves

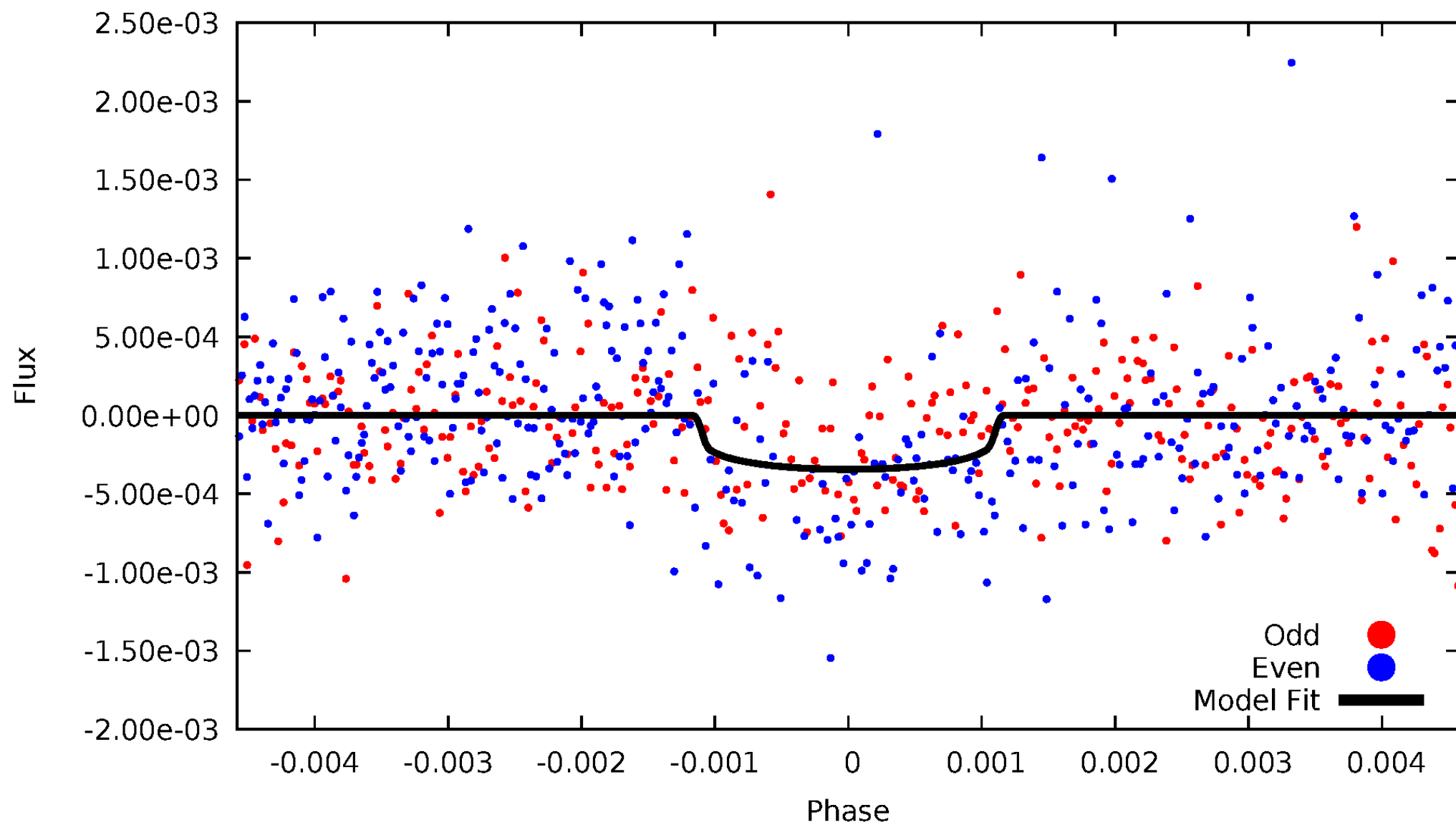


TCE 008332200-01



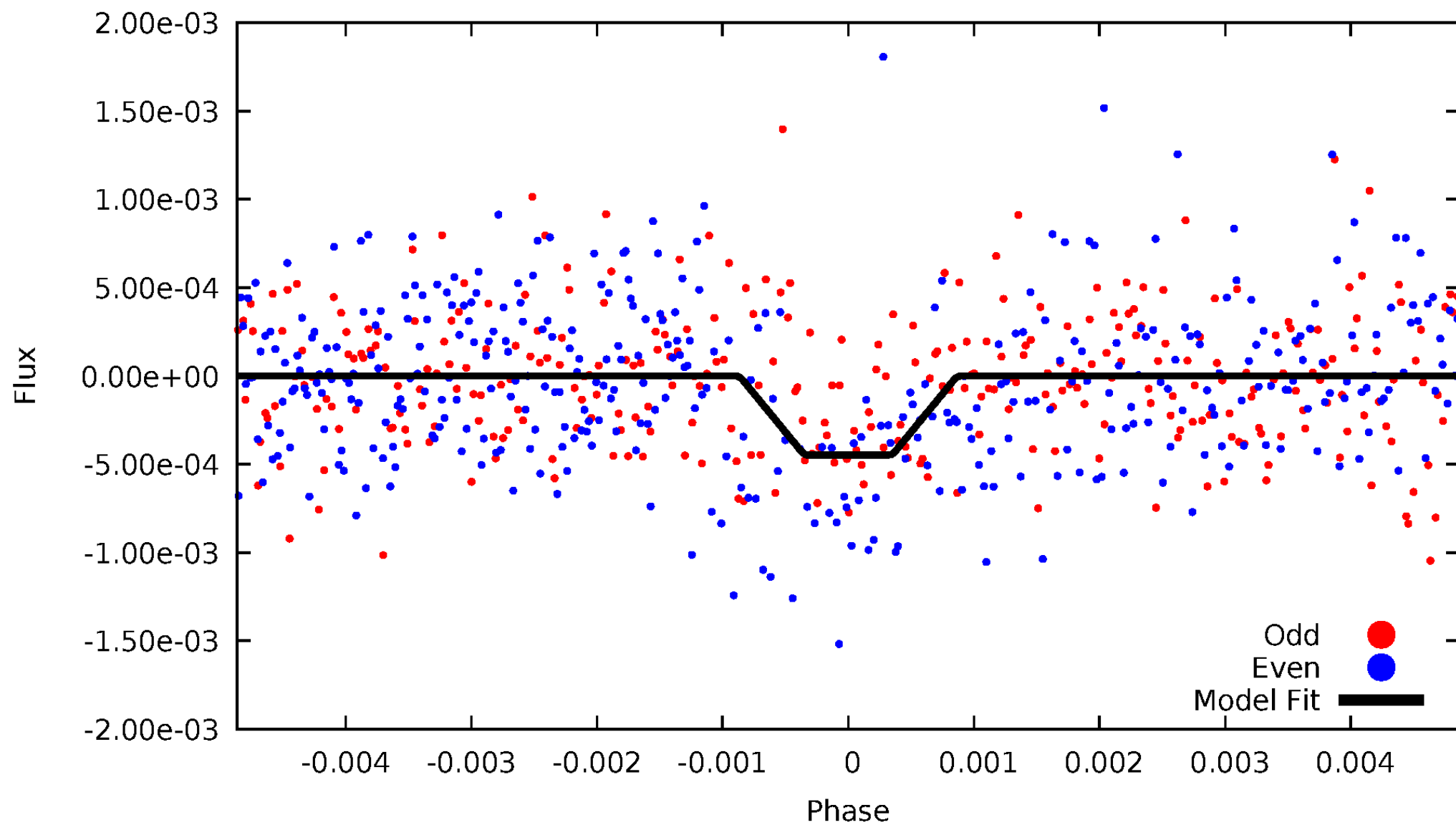
DV Odd/Even

TCE 008332200-01



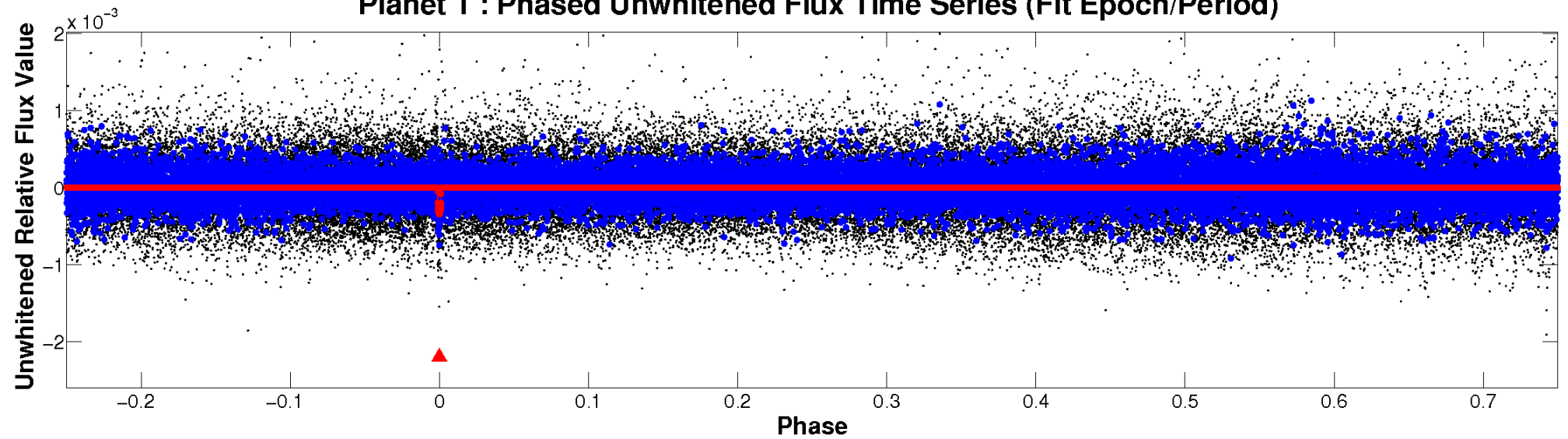
ALT Odd/Even

TCE 008332200-01

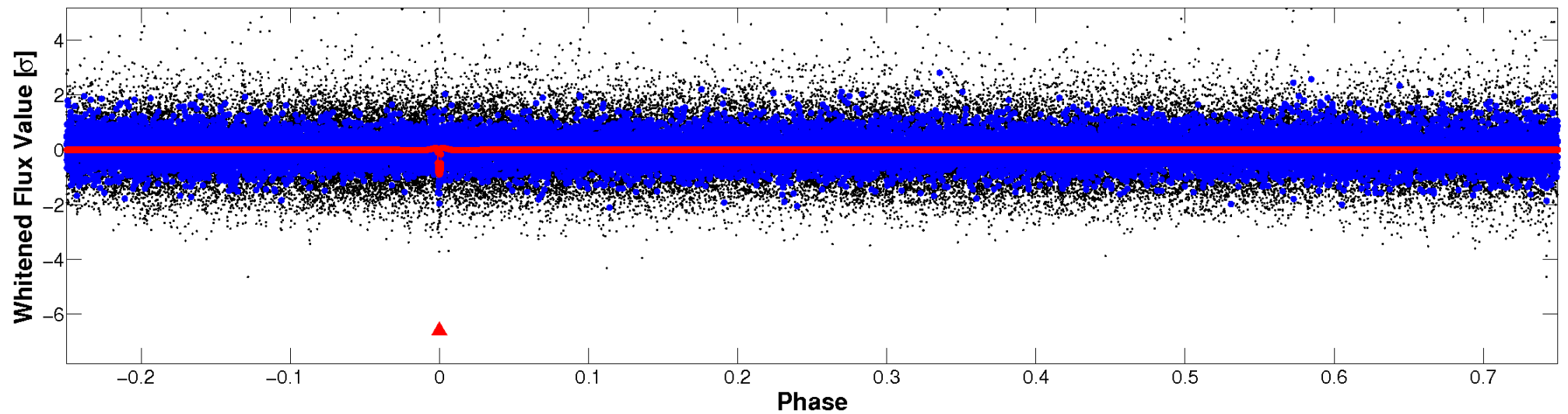


Non-Whitened Vs. Whitened Light Curve

Planet 1 : Phased Unwhitened Flux Time Series (Fit Epoch/Period)

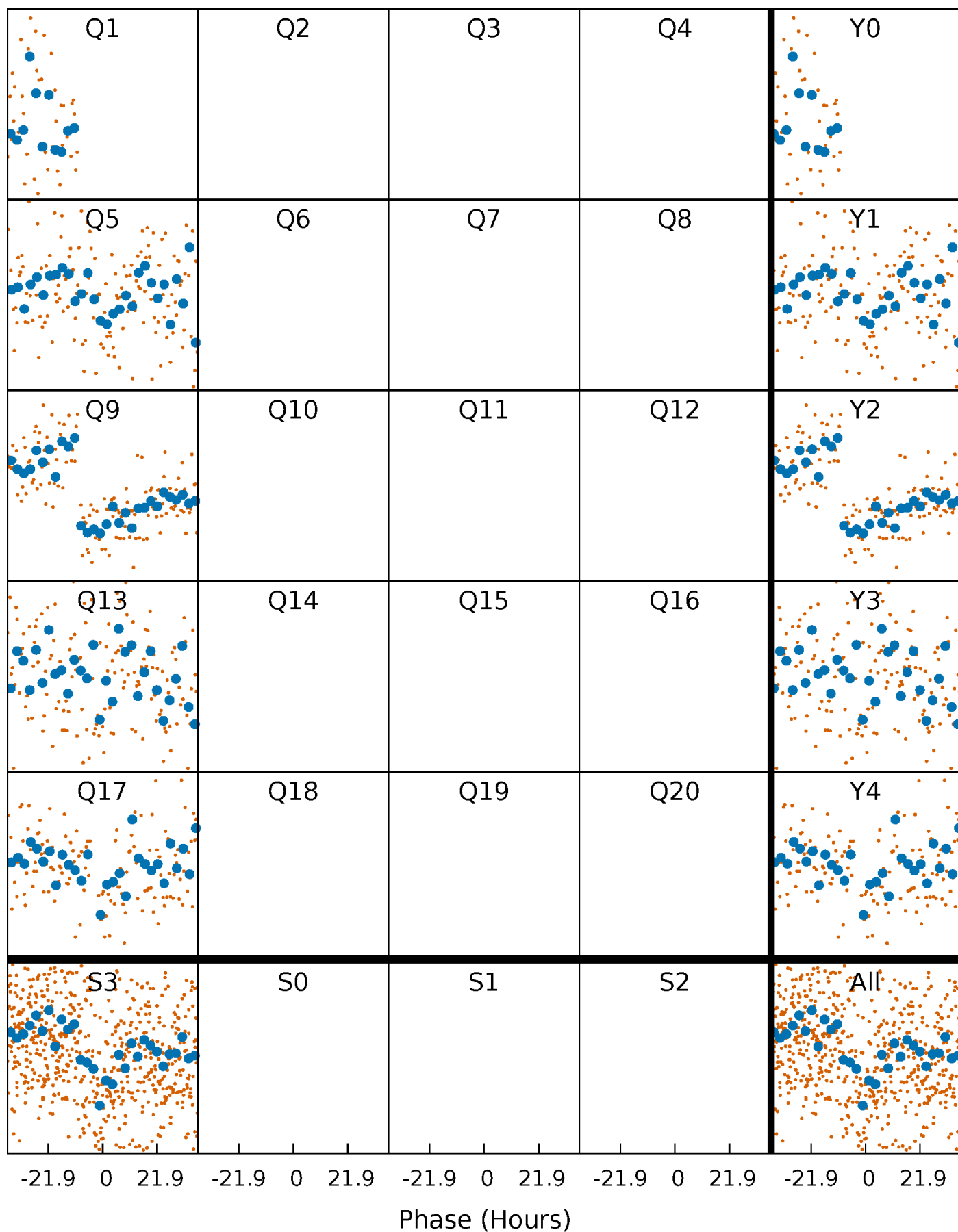


Planet 1 : Phased Whitened Flux Time Series (Fit Epoch/Period)



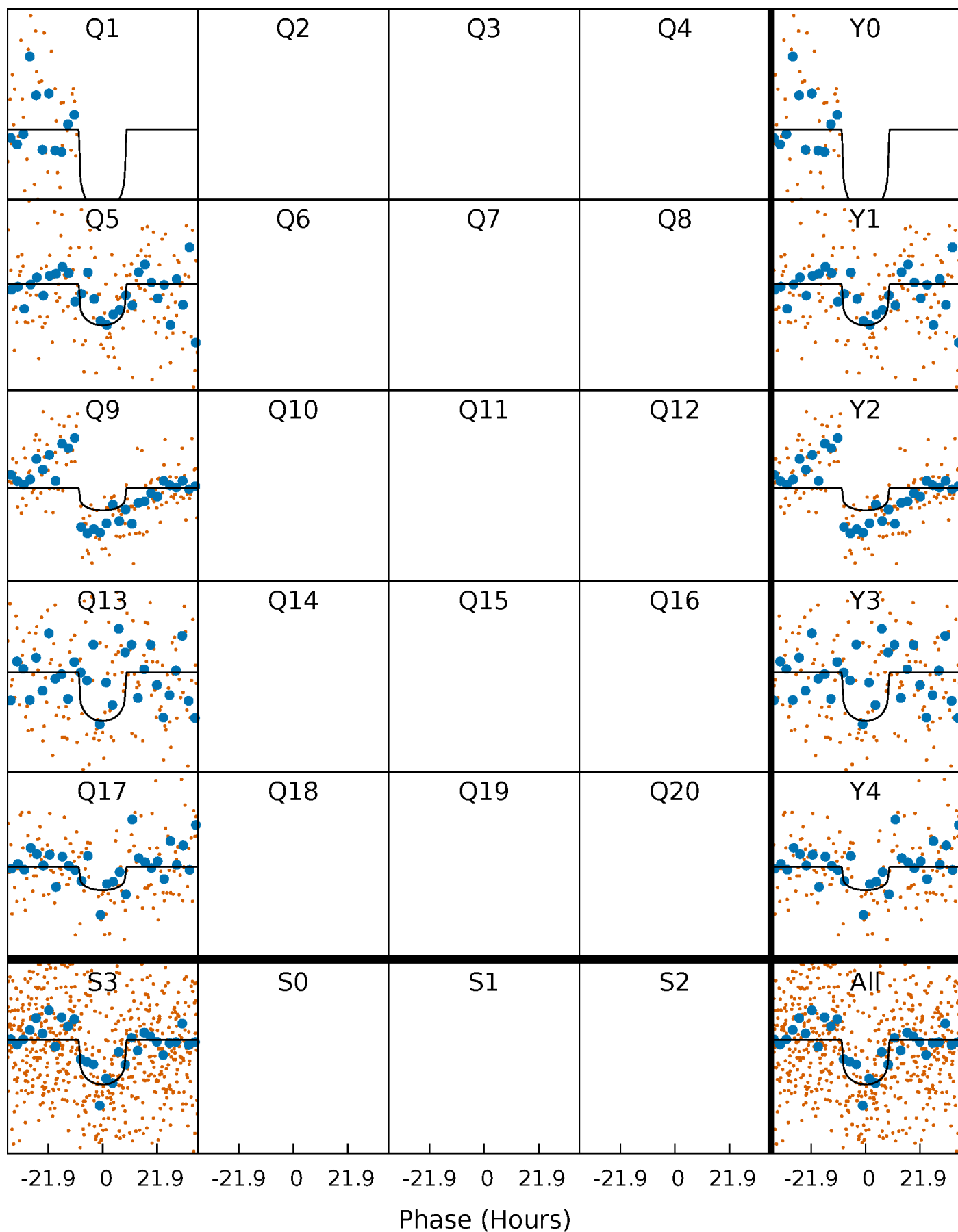
PDC Quarter-Phased Transit Curves

TCE 008332200-01 P=348.909414 Days $T_0=165.411924$ (BKJD)



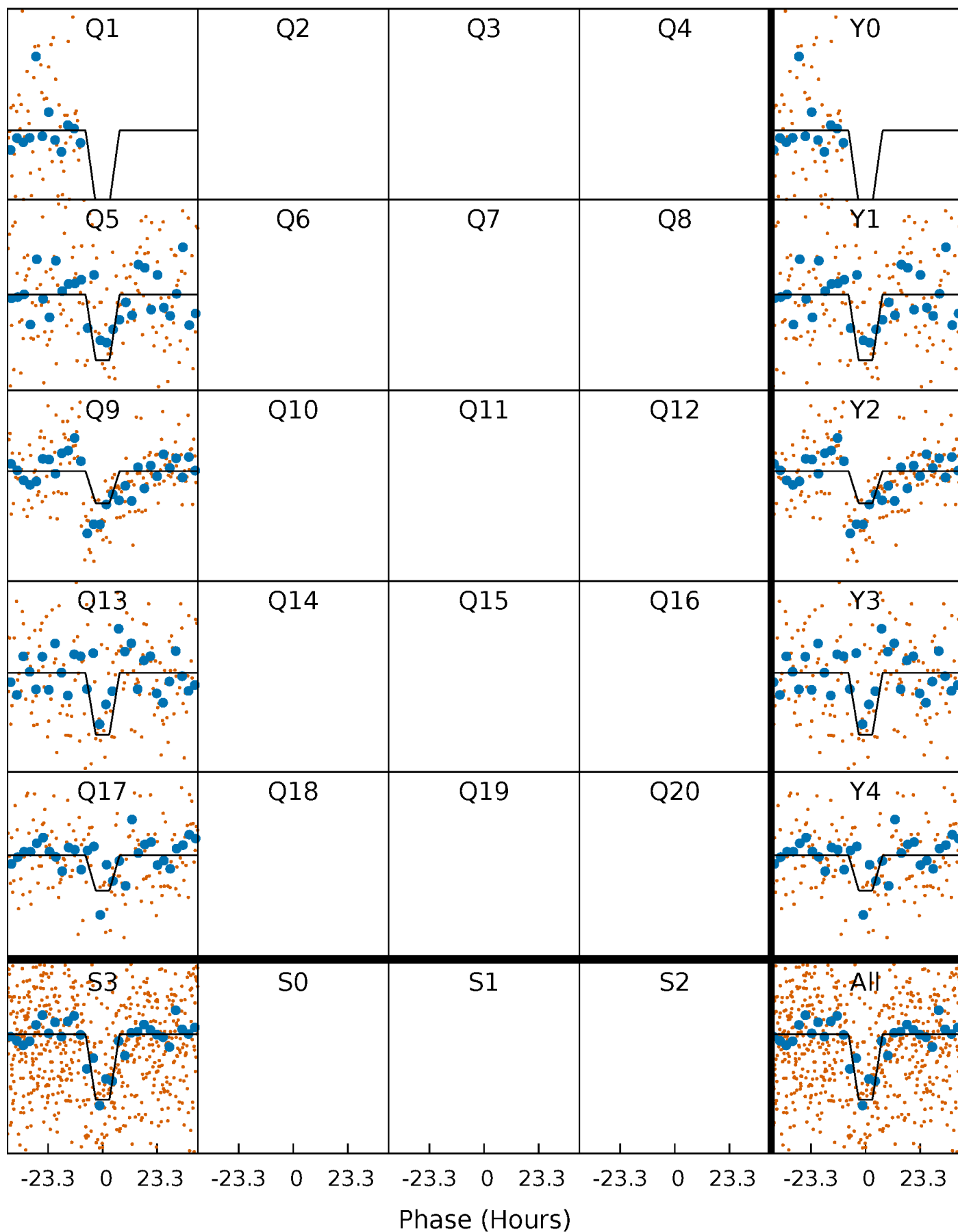
DV Quarter-Phased Transit Curves

TCE 008332200-01 P=348.909414 Days $T_0=165.411924$ (BKJD)



Alt. Detrend Quarter-Phased Transit Curves

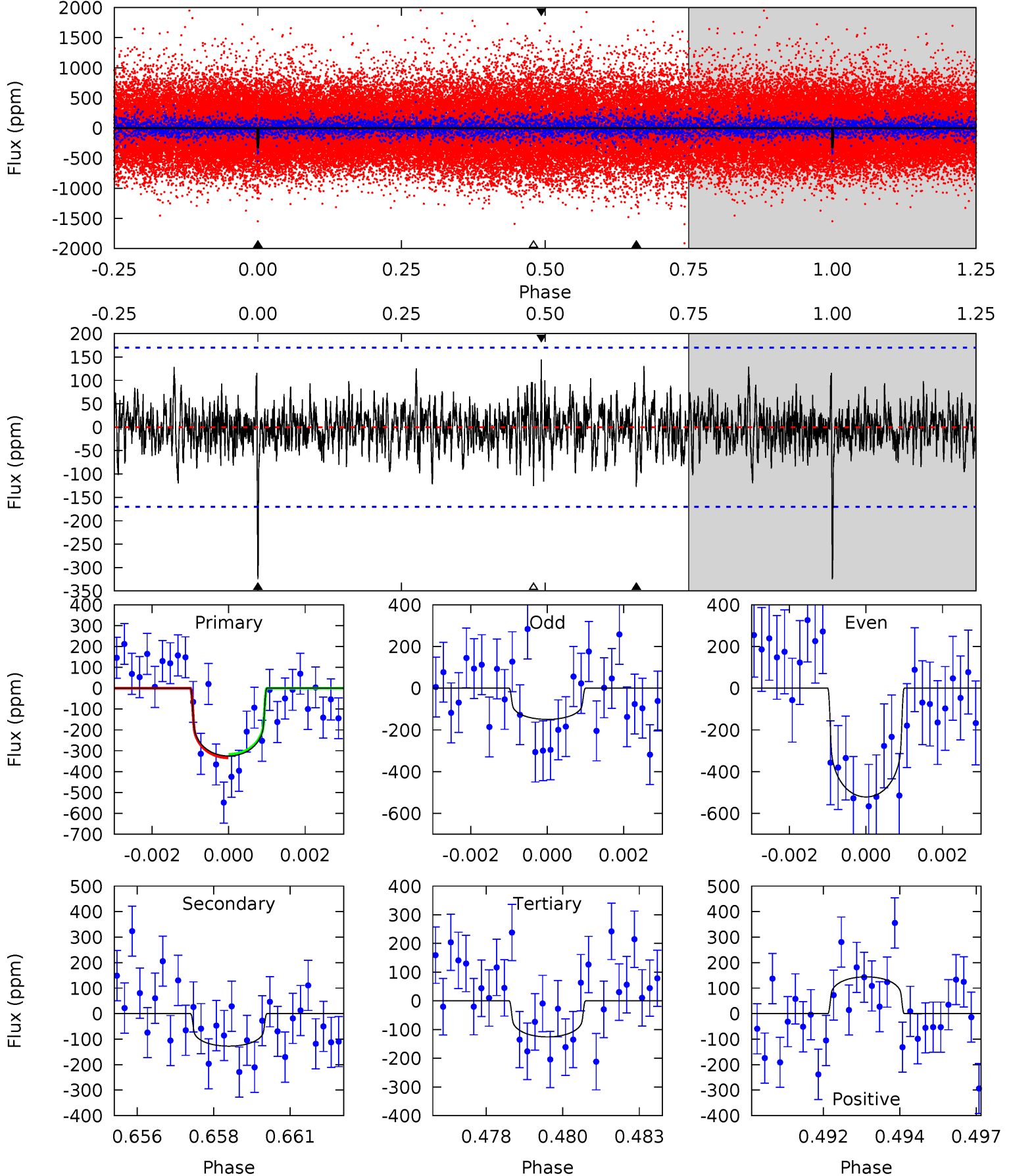
TCE 008332200-01 P=348.909848 Days $T_0=165.389171$ (BKJD)



DV Model-Shift Uniqueness Test

008332200-01, P = 348.909414 Days, E = 165.411924 Days

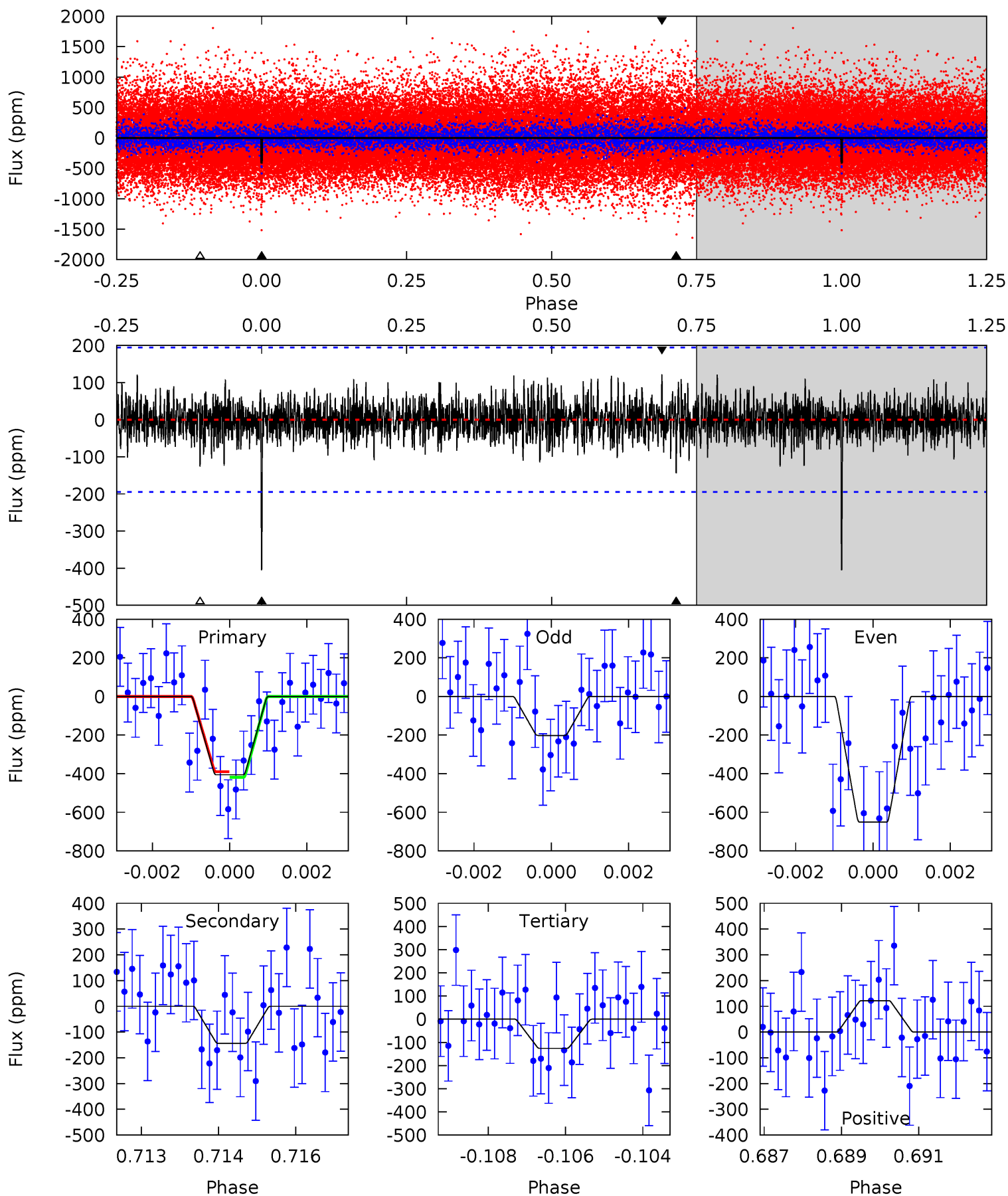
Pri	Sec	Ter	Pos	FA ₁	FA ₂	F _{Red}	Pri-Ter	Pri-Pos	Sec-Ter	Sec-Pos	Odd-Evn	DMM	Shape	TAT
10.1	3.97	3.91	4.49	5.30	3.04	1.13	6.20	5.62	0.06	-0.52	5.79	1.18	0.31	0.25



Alt Model-Shift Uniqueness Test

008332200-01, P = 348.909848 Days, E = 165.389171 Days

Pri	Sec	Ter	Pos	FA ₁	FA ₂	F _{Red}	Pri-Ter	Pri-Pos	Sec-Ter	Sec-Pos	Odd-Evn	DMM	Shape	TAT
11.1	3.96	3.46	3.35	5.35	3.12	1.04	7.68	7.79	0.50	0.61	6.20	1.24	0.23	0.39



Stellar Parameters For KIC 008332200

	$T_{\text{eff}}(K)$	$\log(g)$	[Fe/H]	$R (R_{\odot})$	$M(M_{\odot})$	$p_{\star} (\text{g}\cdot\text{cm}^{-3})$
	5623^{+186}_{-152}	$4.233^{+0.253}_{-0.184}$	$-0.080^{+0.300}_{-0.250}$	$1.190^{+0.361}_{-0.328}$	$0.884^{+0.125}_{-0.073}$	$0.739^{+1.072}_{-0.388}$
	+3%/-3%	+6%/-4%	+375%/-312%	+30%/-28%	+14%/-8%	+145%/-52%
Source	PHO1	KIC0	KIC0	DSEP		

KIC = Kepler Input Catalog; PHO = Photometry; SPE = Spectroscopy; AST = Asteroseismology
 TRA = Transits; DESP = Dartmouth Models; MULT = Multiple Models

Secondary Eclipse Parameters for KIC 008332200-01 / KOI

Detrend	Depth (ppm)	$R_p (R_{\oplus})$	$T_{max} (K)$	$T_{obs} (K)$	A_{obs}
DV	-127 ± 32	$2.32^{+1.17}_{-0.99}$	390^{+34}_{-33}	4606^{+1304}_{-663}	11481^{+24052}_{-6825}
Alt.	-144 ± 36	$2.75^{+1.16}_{-1.11}$	390^{+32}_{-32}	4409^{+954}_{-535}	9608^{+16602}_{-5461}

T_{max} = Theoretical Maximum Planetary Temperature
 T_{obs} = Observed Planetary Temperature (Assuming A=0.3)
 A_{obs} = Observed Albedo (Assuming T=0)

If a secondary eclipse is present, the system is likely an EB if $T_{obs} \gg T_{max}$ AND $A_{obs} \gg 1.0$

DV Centroid Data

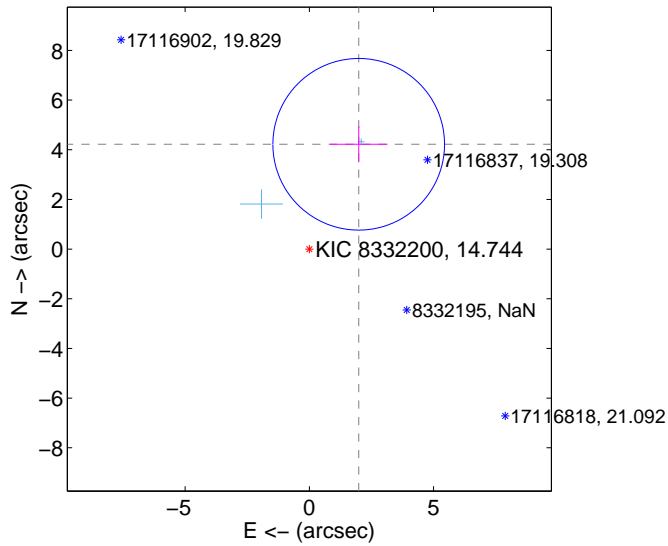
Supplemental centroid analysis for 008332200-01. Kepler magnitude: 14.74. Transit SNR 9.04

There are 2 quarters with good PRF difference image offsets

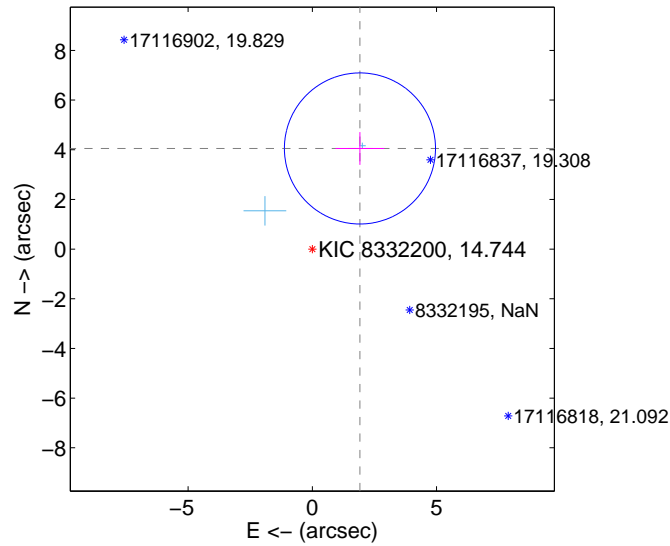
The direct PRF centroid is offset from the target star catalog position by about 0.18 arcsec

	Distance in arcsec	Distance / σ	Δ RA	Δ Dec
PRF-fit source offset from OOT	4.665 ± 1.152	4.05	-1.988 ± 1.160	4.220 ± 0.728
PRF-fit source offset from KIC position	4.483 ± 1.014	4.42	-1.918 ± 0.983	4.052 ± 0.659
photometric centroid source offset	2.69 ± 1.69	1.59	-2.59 ± 1.69	-0.75 ± 1.73

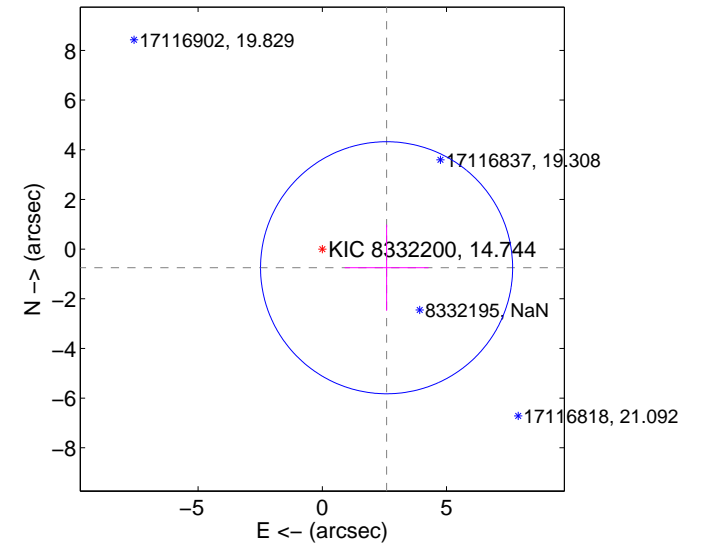
offset from difference PRF-fit to OOT PRF-fit



offset from difference PRF-fit to KIC position



offset from photometric centroids

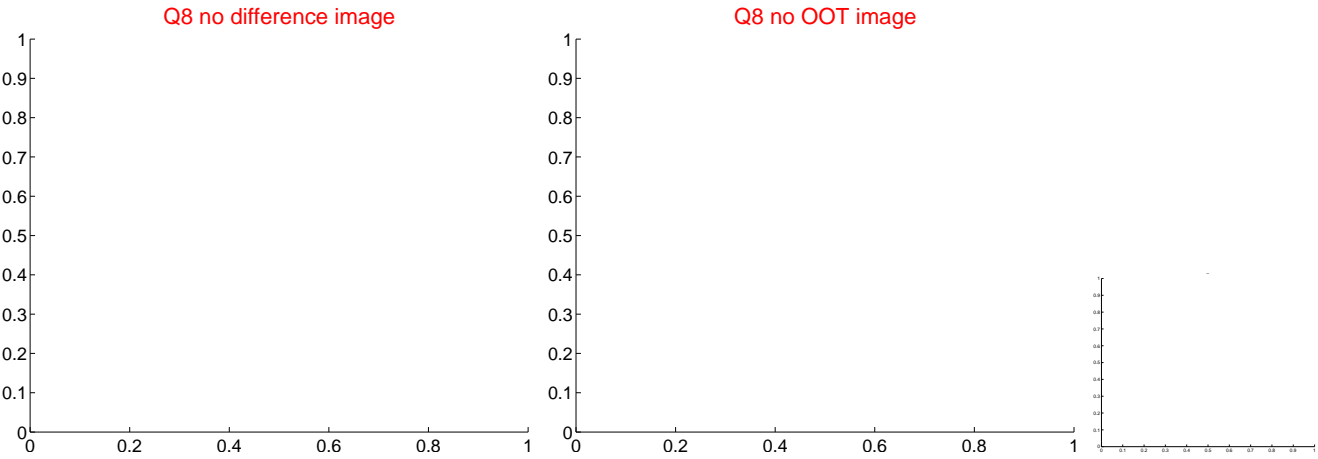
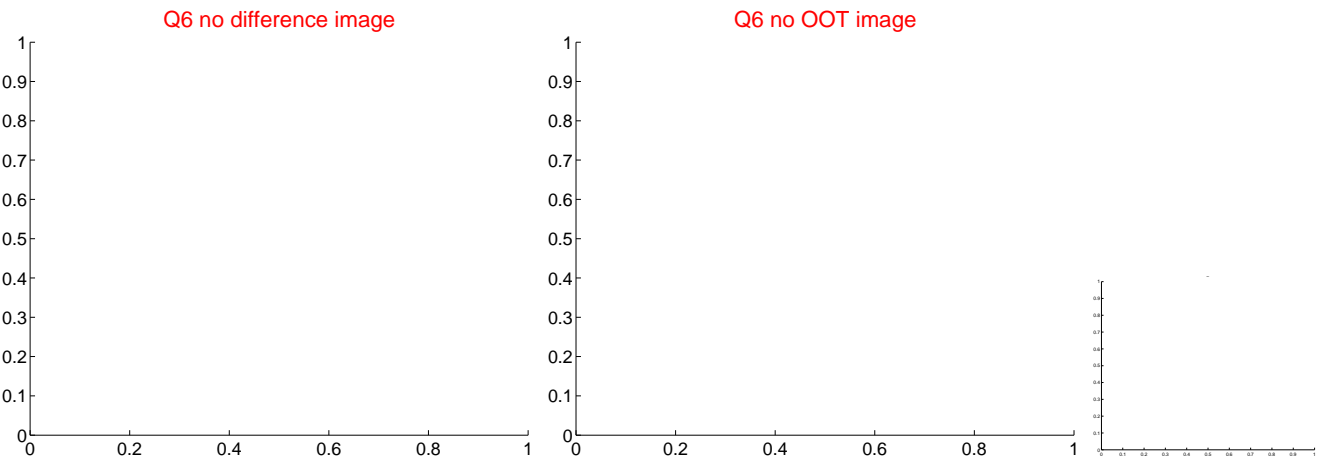
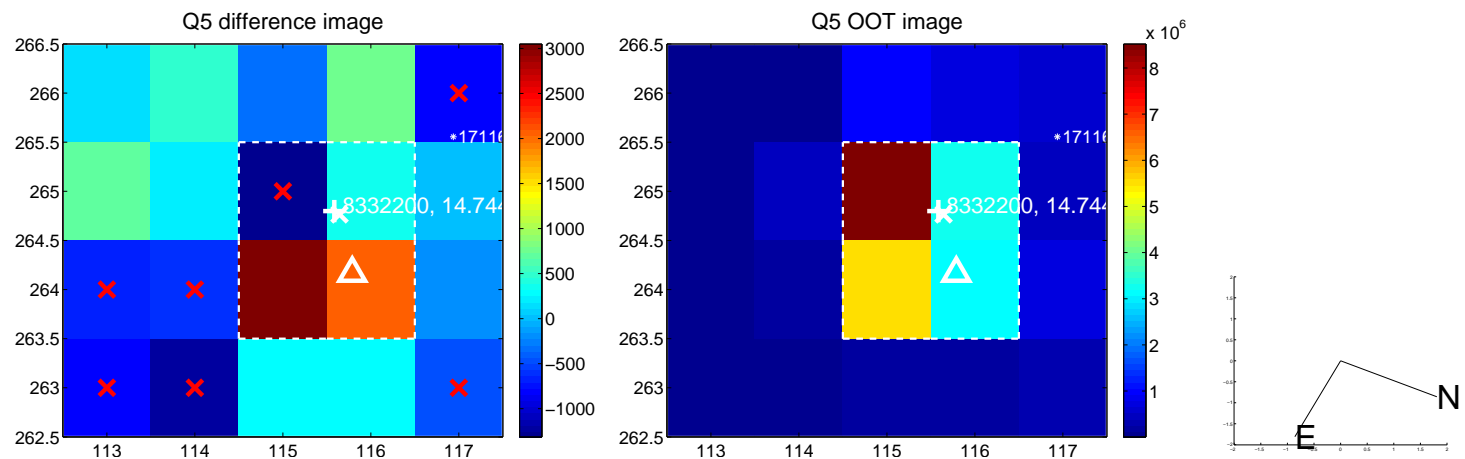


Centroid source offsets from the target star reconstructed from PRF and photometric centroids. Sky blue crosses: good quarterly centroid offsets; Vermillion crosses: bad quarterly centroid offsets; magenta cross: average over quarters. Length of the crosses: one- σ uncertainty. Blue circle: three- σ . Red *: target star. Blue *: Other stars. Text next to a star gives its KIC ID and kepmag. KIC IDs > 15,000,000 are from the UKIRT catalog.

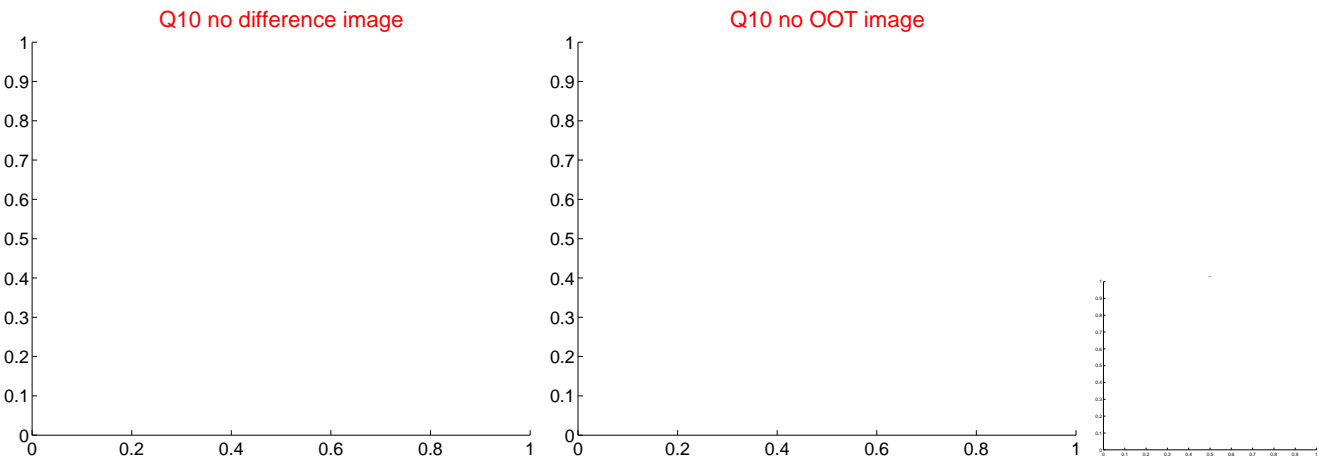
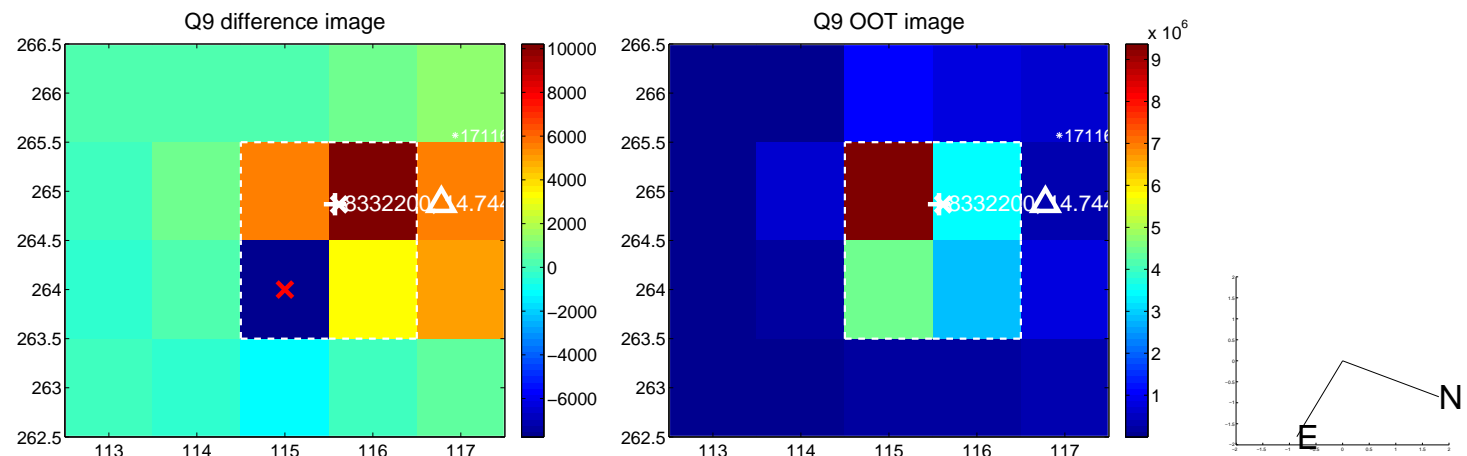
white \times : KIC target position; $+$: OOT centroid; \triangle : difference centroid. red \times : large negative pixel value.



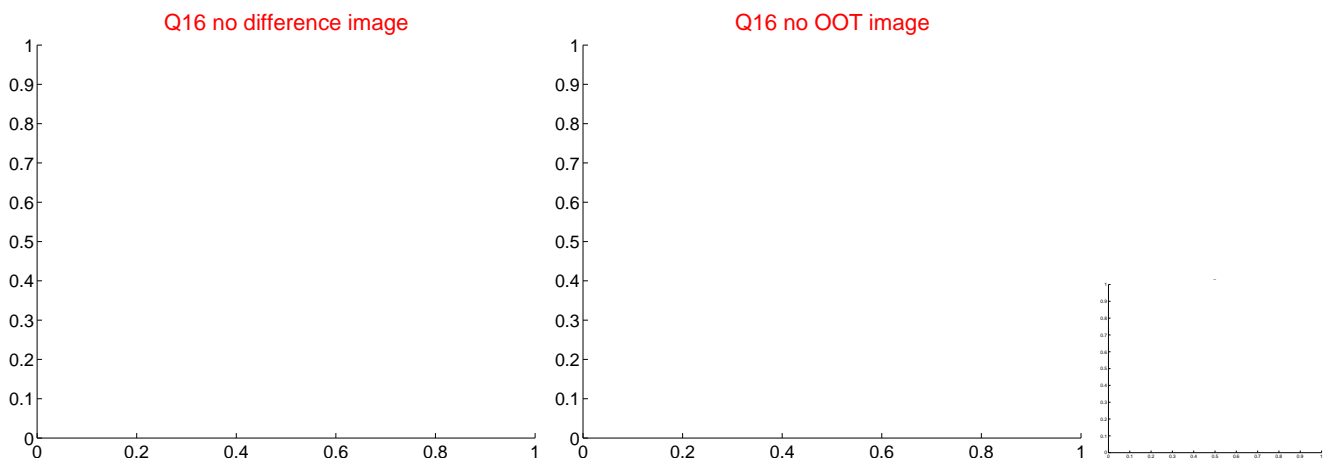
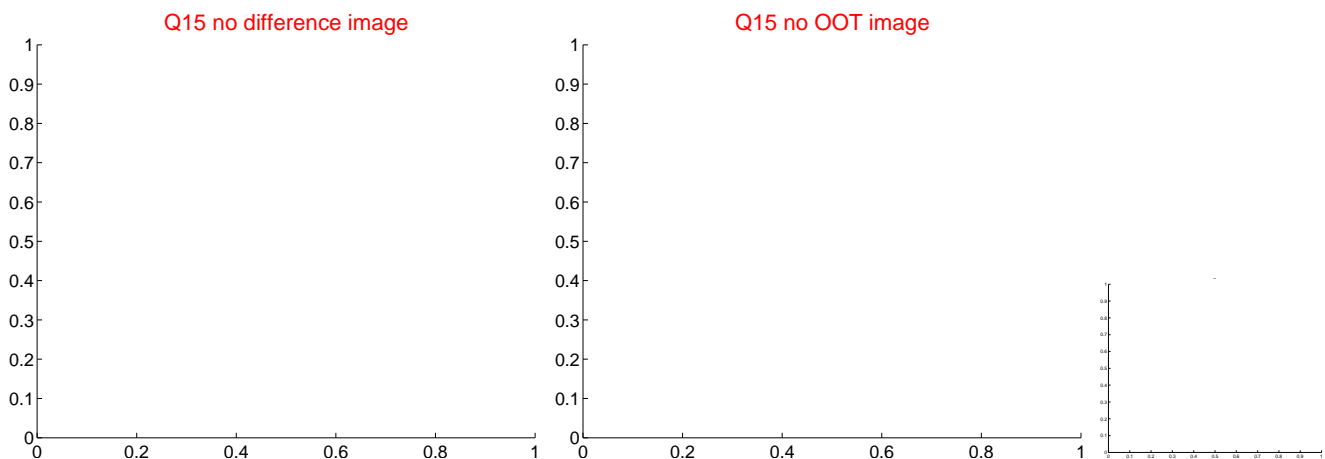
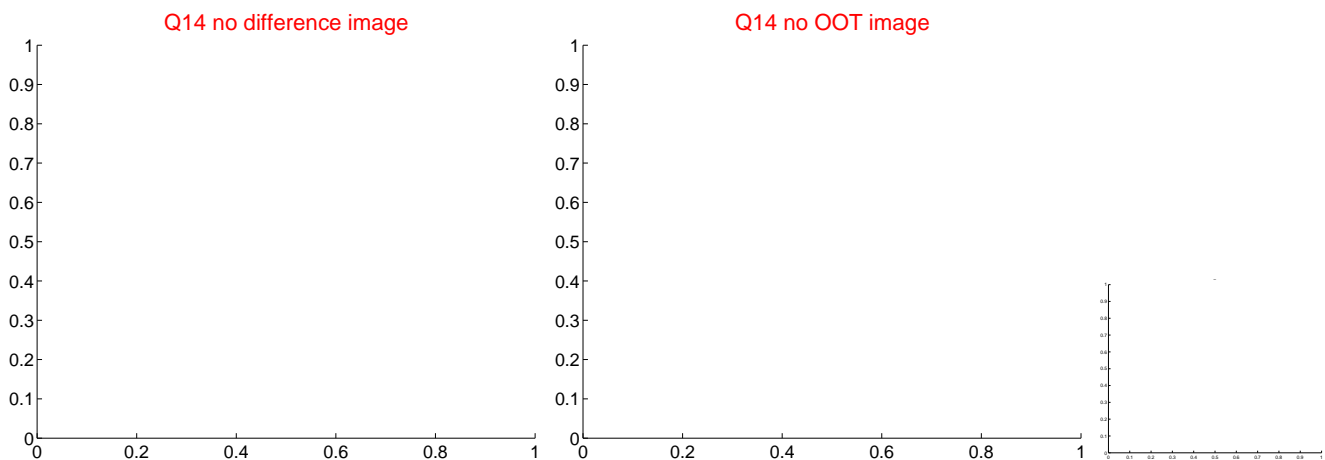
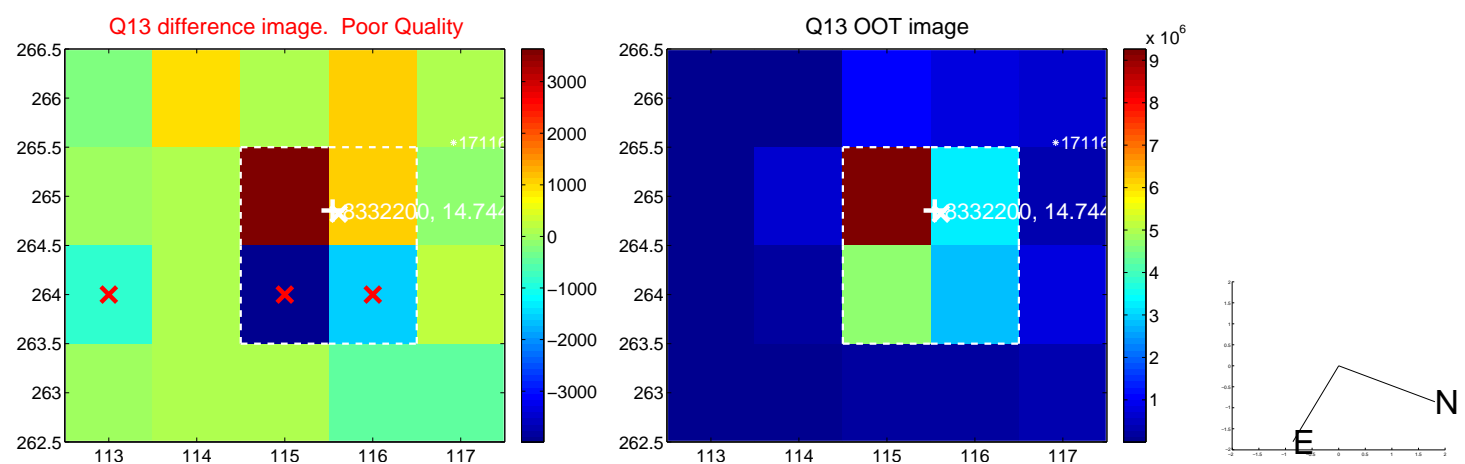
white \times : KIC target position; +: OOT centroid; \triangle : difference centroid. red \times : large negative pixel value.



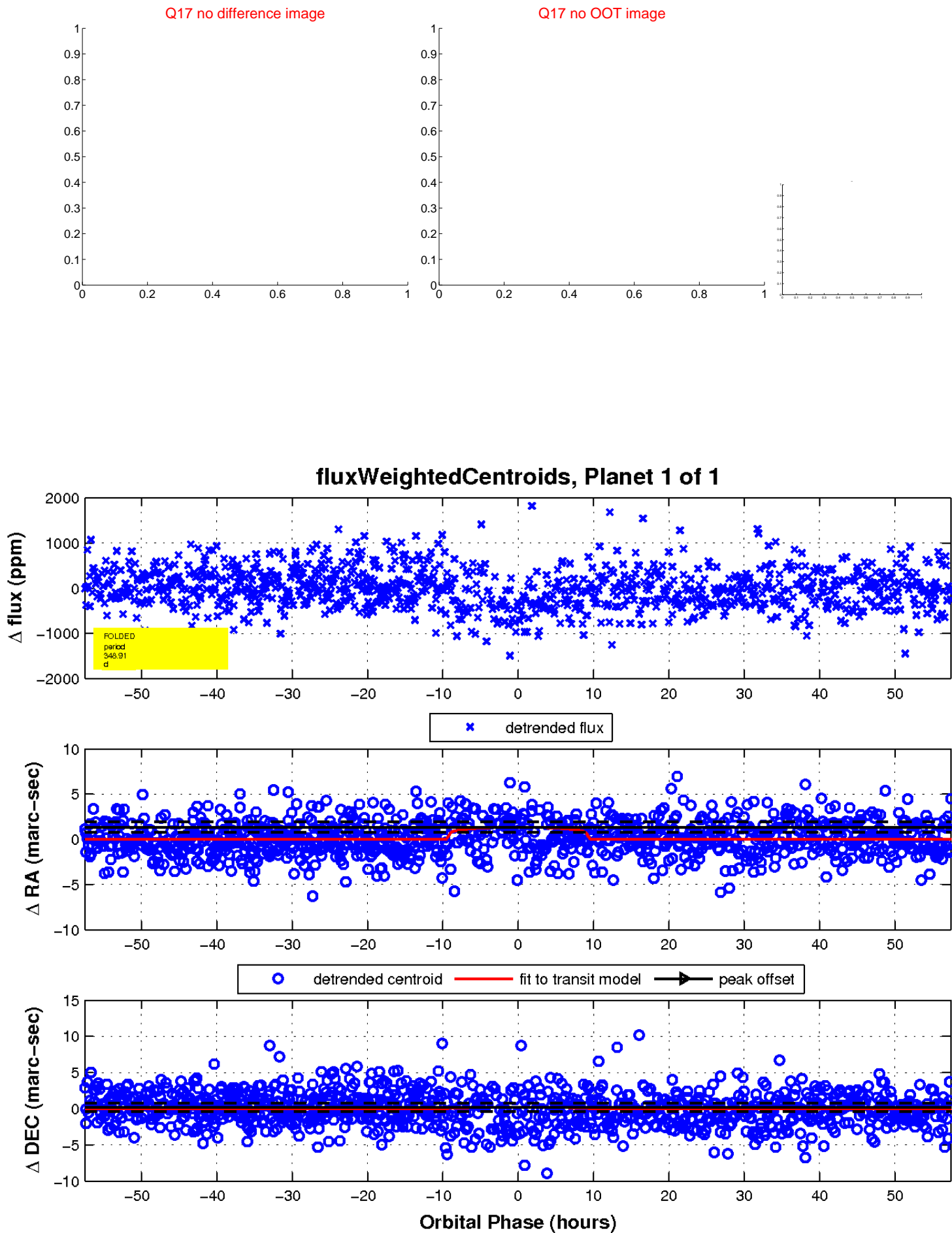
white \times : KIC target position; +: OOT centroid; \triangle : difference centroid. red \times : large negative pixel value.



white \times : KIC target position; $+$: OOT centroid; \triangle : difference centroid. red \times : large negative pixel value.



white \times : KIC target position; $+$: OOT centroid; \triangle : difference centroid. red \times : large negative pixel value.



UKIRT Image

Declination

