

KIC 008229540

Q1-17 DR25 TCE Parameters

TCE	Run Type	KOI?	Period (Days)	Epoch (BKJD)	Depth (ppm)	Duration (Hours)	MES	SNR	R_{\star} (R_{\odot})	T_{\star} (K)	R_p (R_{\oplus})	S_p (S_{\oplus})
008229540-01	OBS	No	471.077271	446.274558	261.7	11.745	8.6	8.0	1.26	6343	2.17	1.74

Robovetter Results

TCE	Run Type	Disp	Score	N	S	C	E	Comments
008229540-01	OBS	FP	0.00	1	0	0	0	INDIV_TRANS_MARSHALL_SKYE—ALL_TRANS_CHASES—INCONSISTENT_TRANS—CENT_FEW_DIFFS

Notes: OBS = Observed. INJ = Injected. INV = Inverted. SCR = Scrambled.

N = Not Transit-Like. S = Stellar Eclipse. C = Centroid Offset. E = Ephemeris Match.

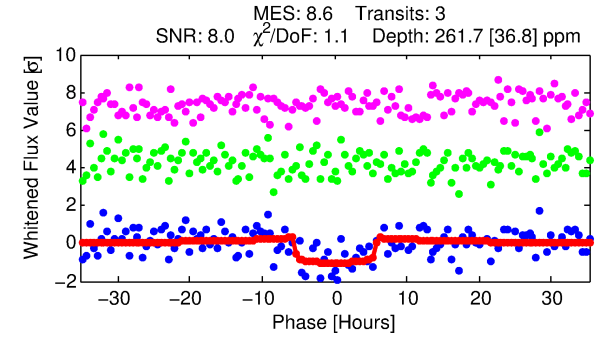
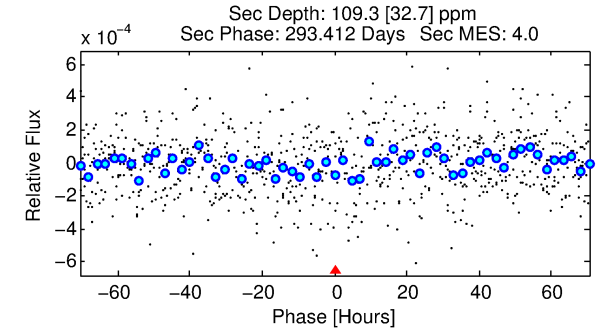
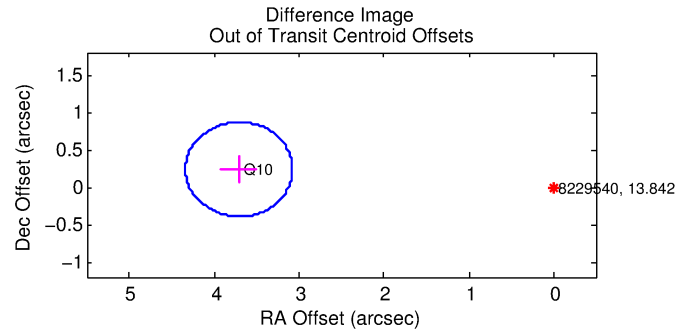
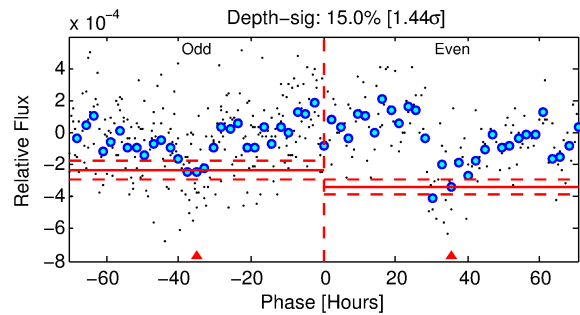
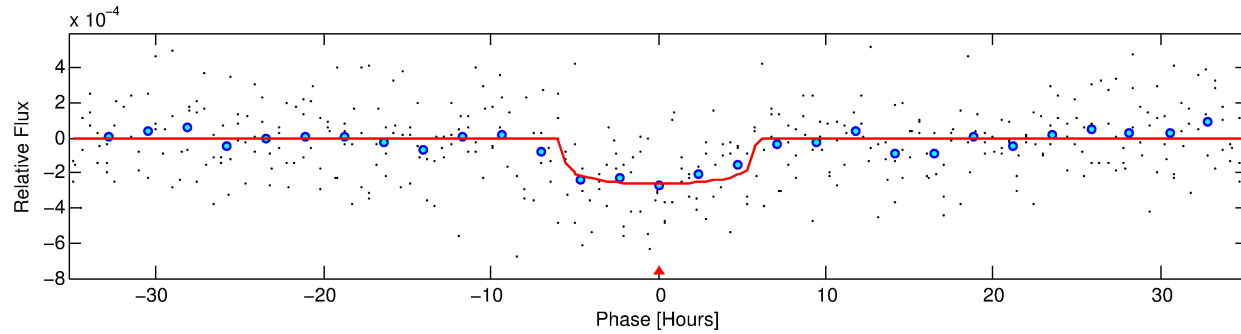
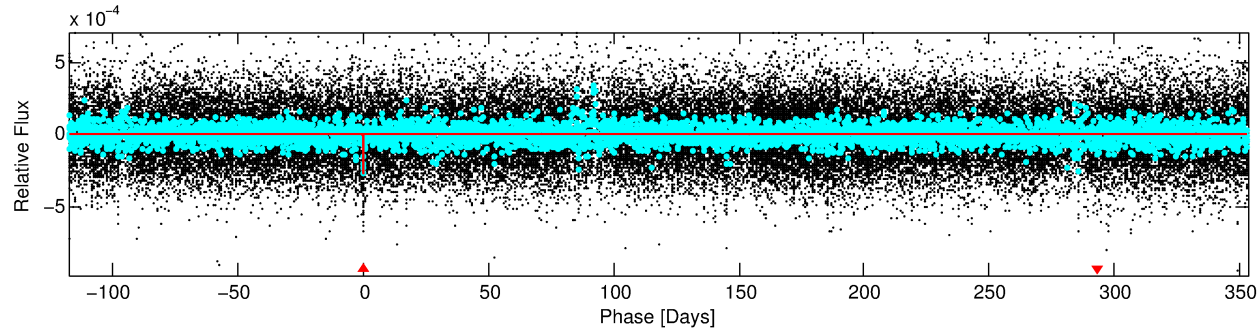
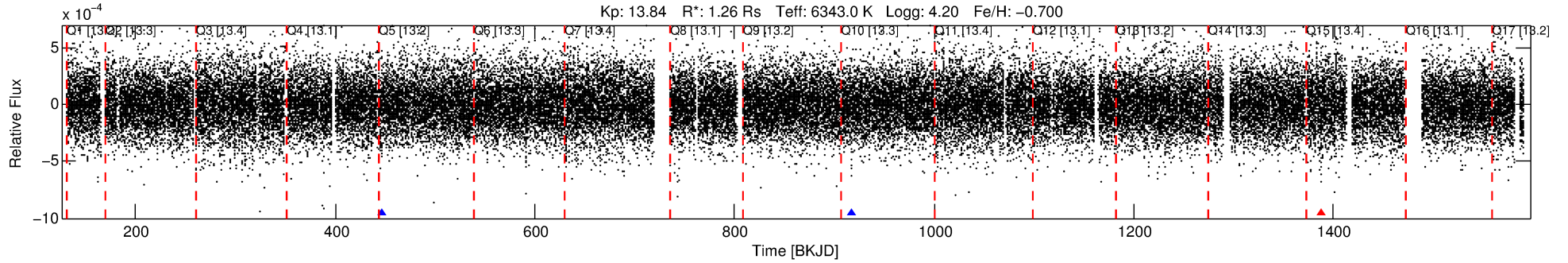
See http://exoplanetarchive.ipac.caltech.edu/docs/API_kepcandidate_columns.html#proj_disp_col for comment definitions.

Ephemeris Match Information For 008229540-01

No Significant Match Found

DV One-Page Summary

KIC: 8229540 Candidate: 1 of 1 Period: 471.077 d



DV Fit Results:

Period = 471.07727 [0.01388] d
Epoch = 446.2746 [0.0167] BKJD
Rp/R* = 0.0158 [0.0086]
a/R* = 227.06 [668.65]
b = 0.69 [2.20]
Seff = 1.74 [0.80]
Teq = 293 [34] K
Rp = 2.17 [1.31] Re
a = 1.1463 [0.3085] AU
Ag = 16733.23 [20181.73] [0.83 σ]
Teffp = 5153 [1455] K [3.34 σ]

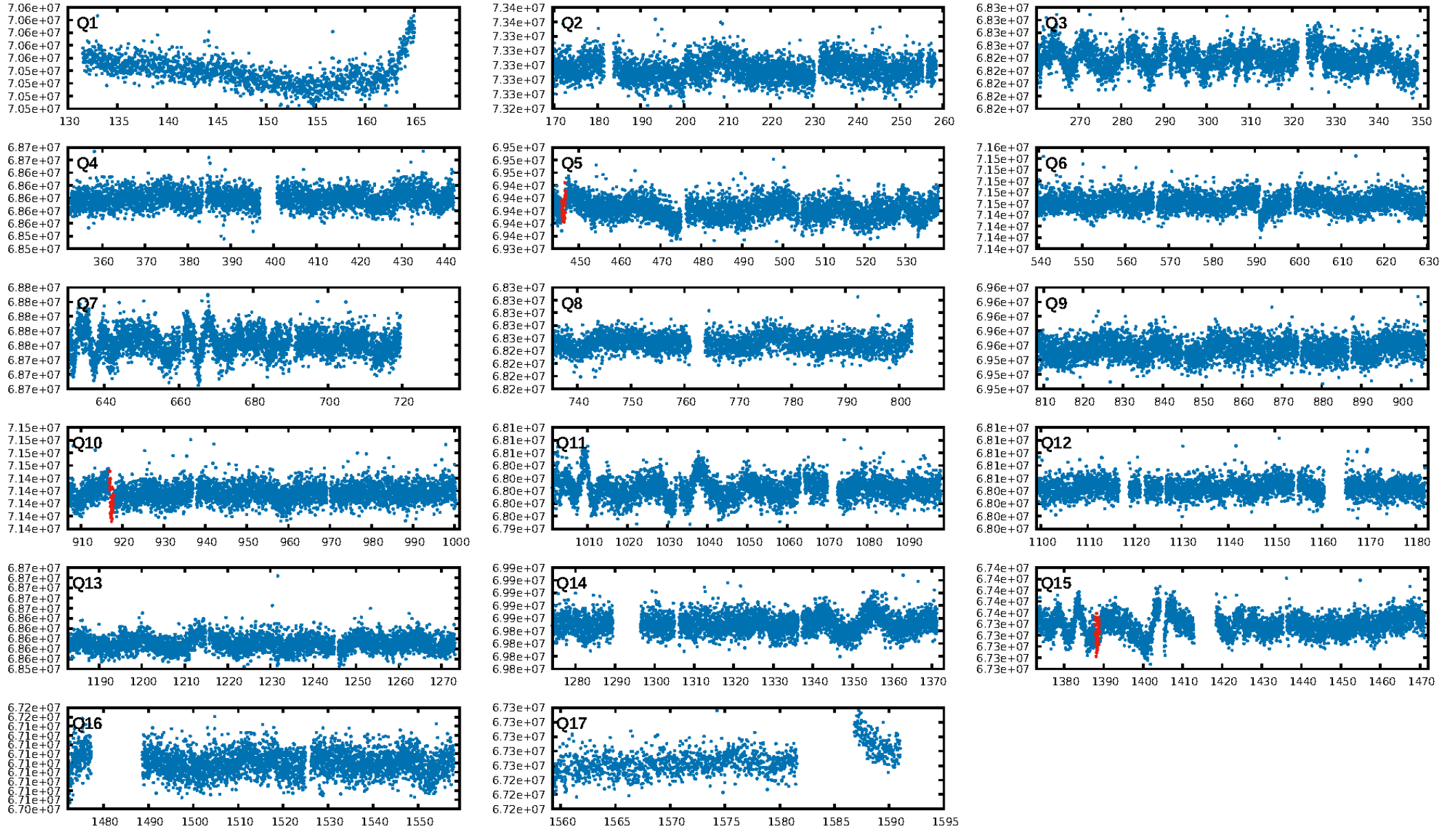
DV Diagnostic Results:

ShortPeriod-sig: N/A
LongPeriod-sig: N/A
ModelChiSquare2-sig: 57.7%
ModelChiSquareGof-sig: 94.1%
Bootstrap-pfa: 2.56e-10
RollingBand-fgt: 0.67 [2/3]
GhostDiagnostic-chr: 0.7985
Centroid-sig: 68.4%
Centroid-so: 0.964 arcsec [0.57 σ]
OotOffset-rm: 3.714 arcsec [17.67 σ]
KicOffset-rm: 3.552 arcsec [16.91 σ]
OotOffset-st: 1/0/0/0 [1]
KicOffset-st: 1/0/0/0 [1]
DiffImageQuality-fgm: 1.00 [1/1]
DiffImageOverlap-fno: 1.00 [3/3]

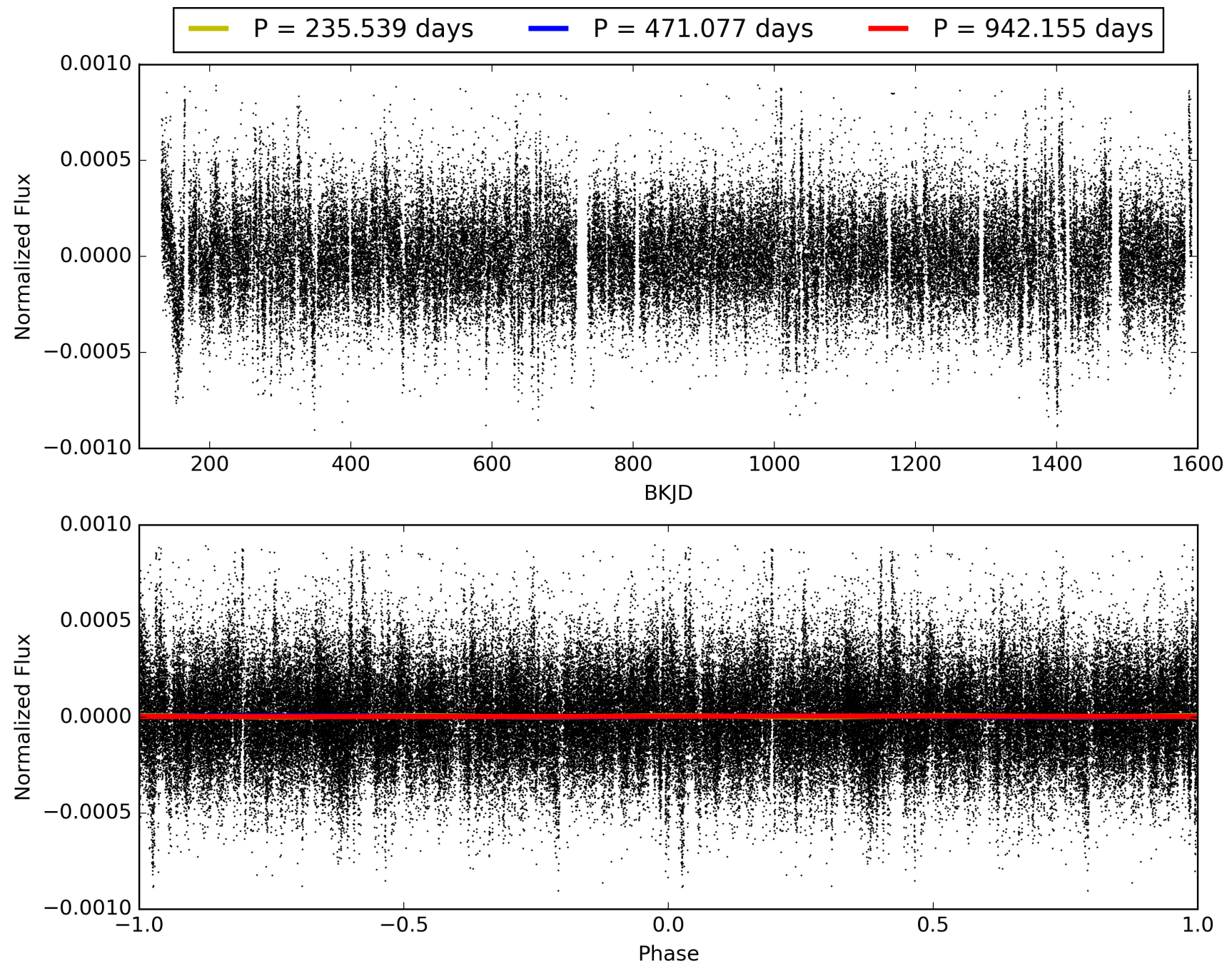
Software Revision: svn-ssh://murzim/repo/soc/tags/release/9.3.42@60958 -- Date Generated: 30-Jan-2016 12:56:01 Z

This Data Validation Report Summary was produced in the Kepler Science Operations Center Pipeline at NASA Ames Research Center

TCE 008229540-01, PDC Light Curves

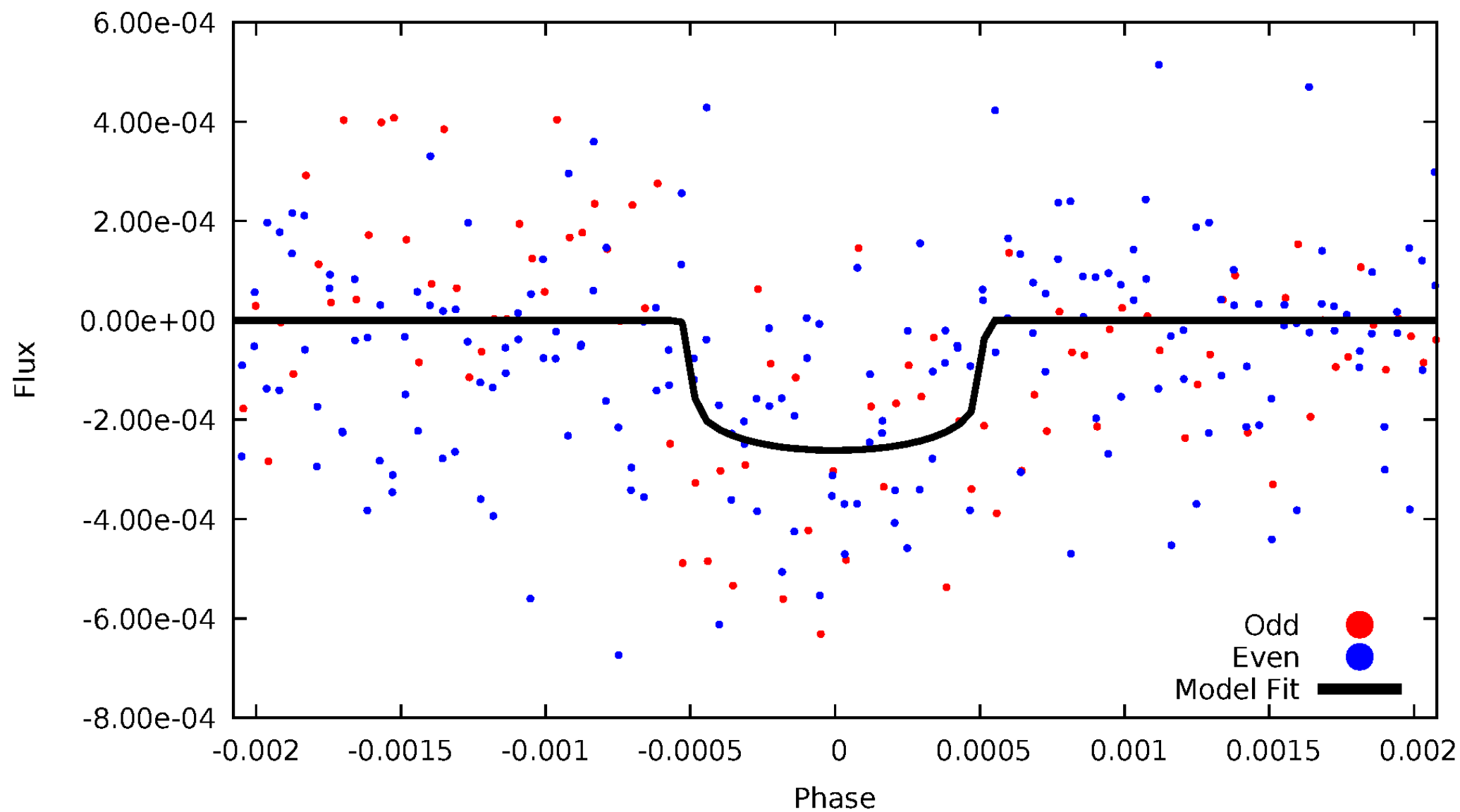


TCE 008229540-01



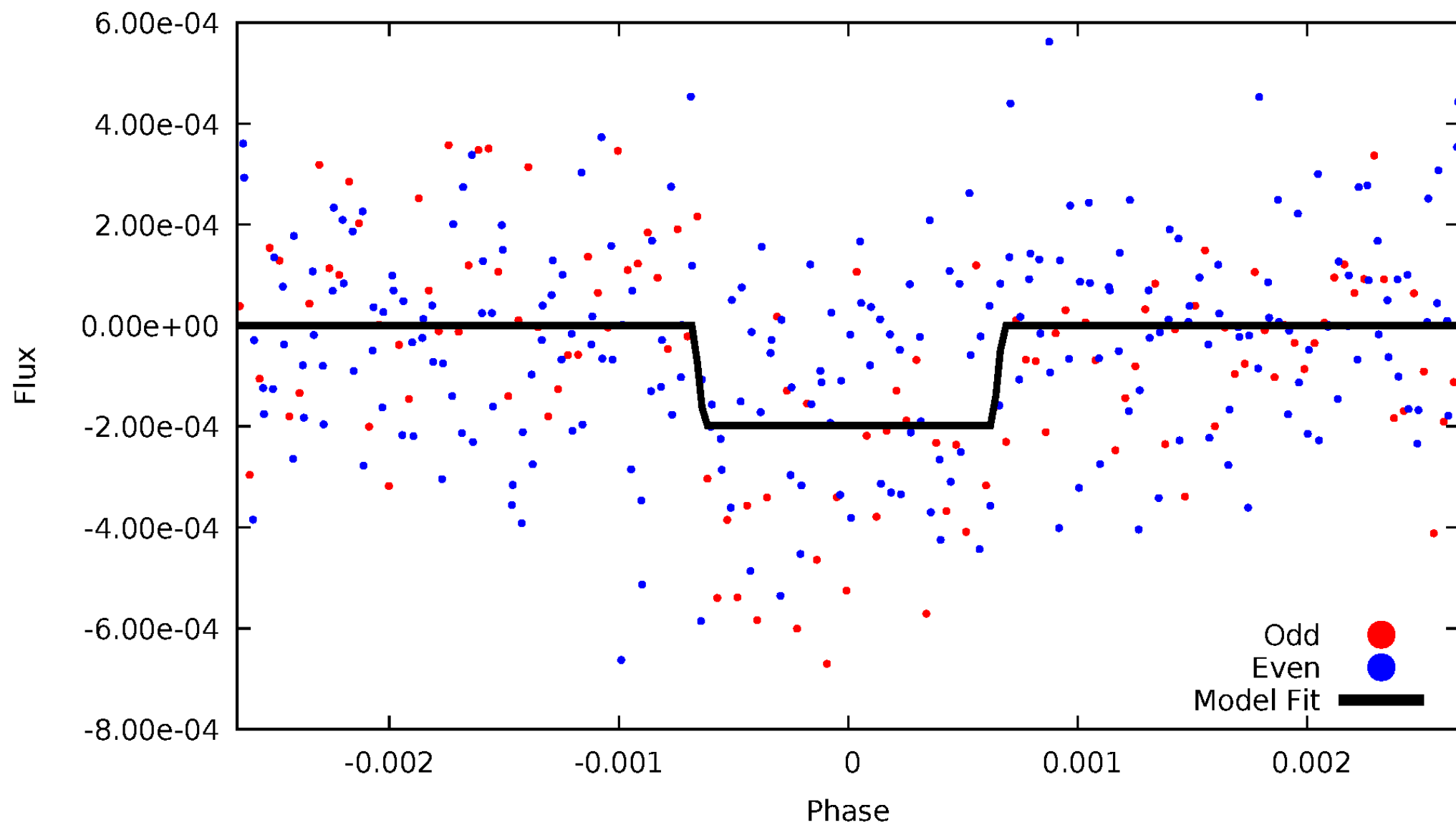
DV Odd/Even

TCE 008229540-01



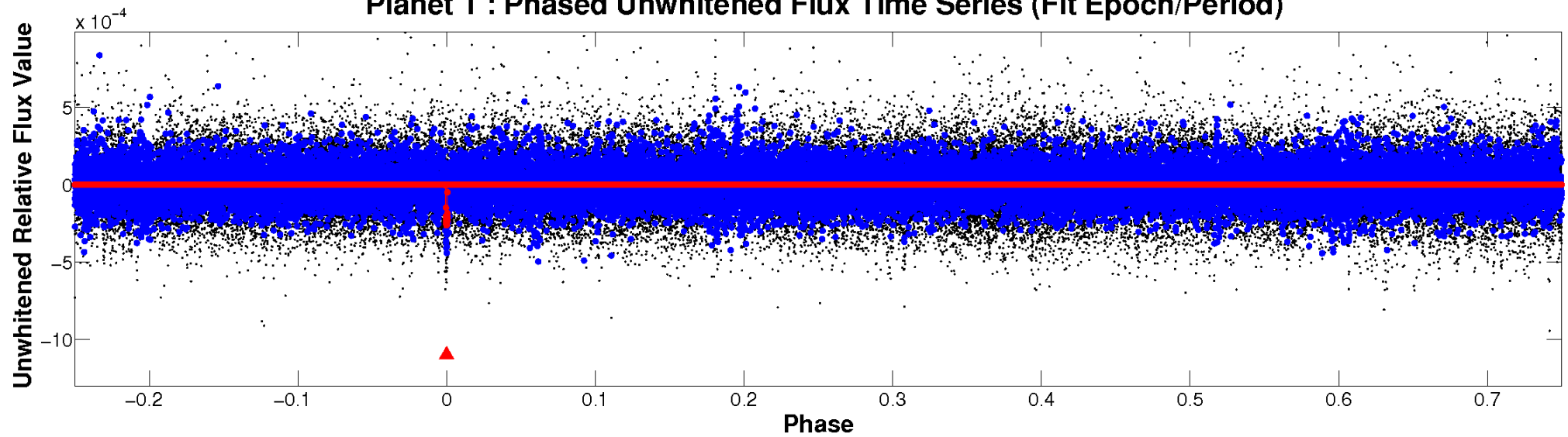
ALT Odd/Even

TCE 008229540-01

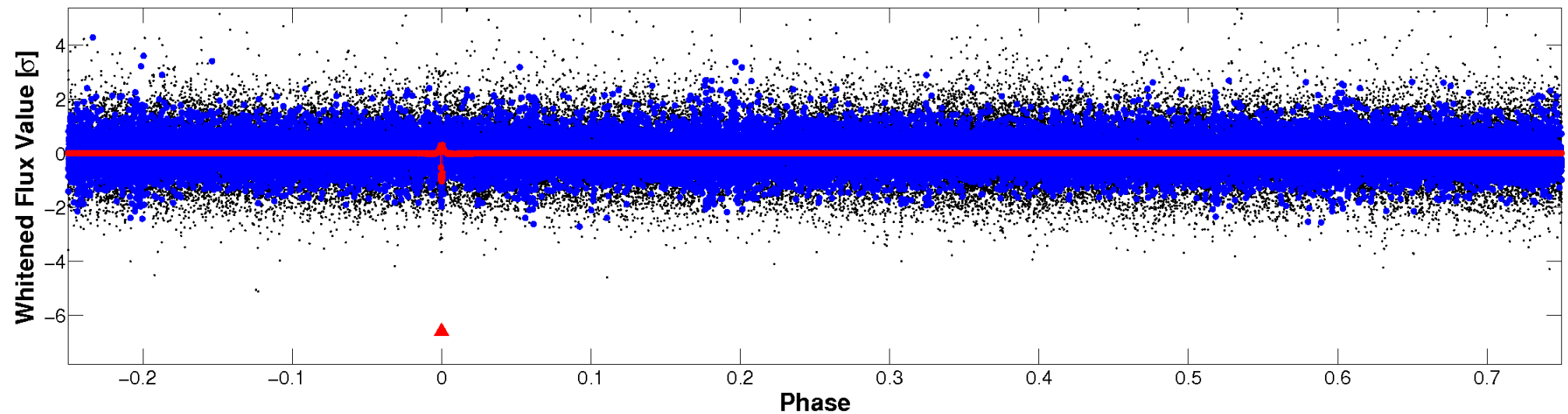


Non-Whitened Vs. Whitened Light Curve

Planet 1 : Phased Unwhitened Flux Time Series (Fit Epoch/Period)

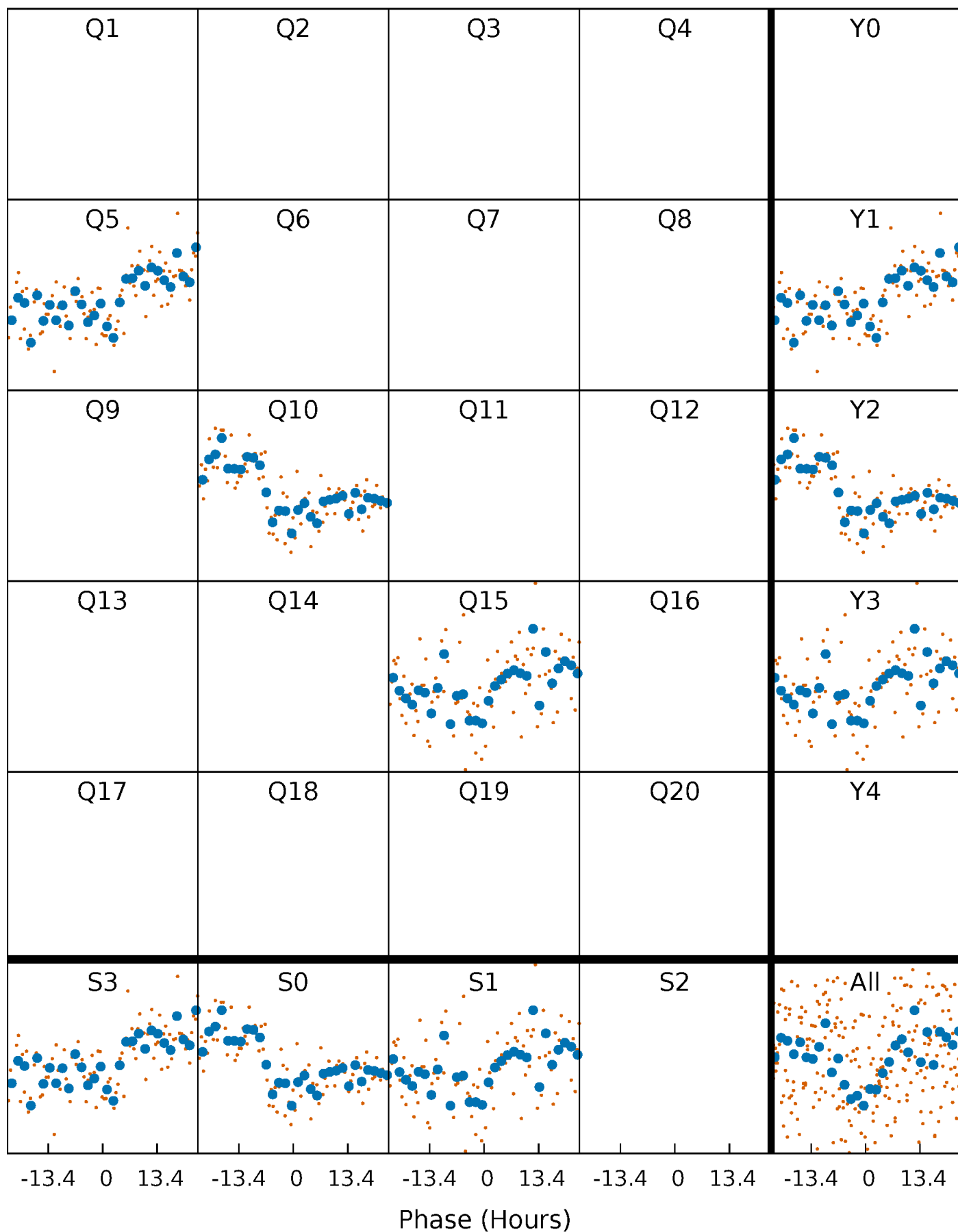


Planet 1 : Phased Whitened Flux Time Series (Fit Epoch/Period)



PDC Quarter-Phased Transit Curves

TCE 008229540-01 P=471.077271 Days $T_0=446.274558$ (BKJD)



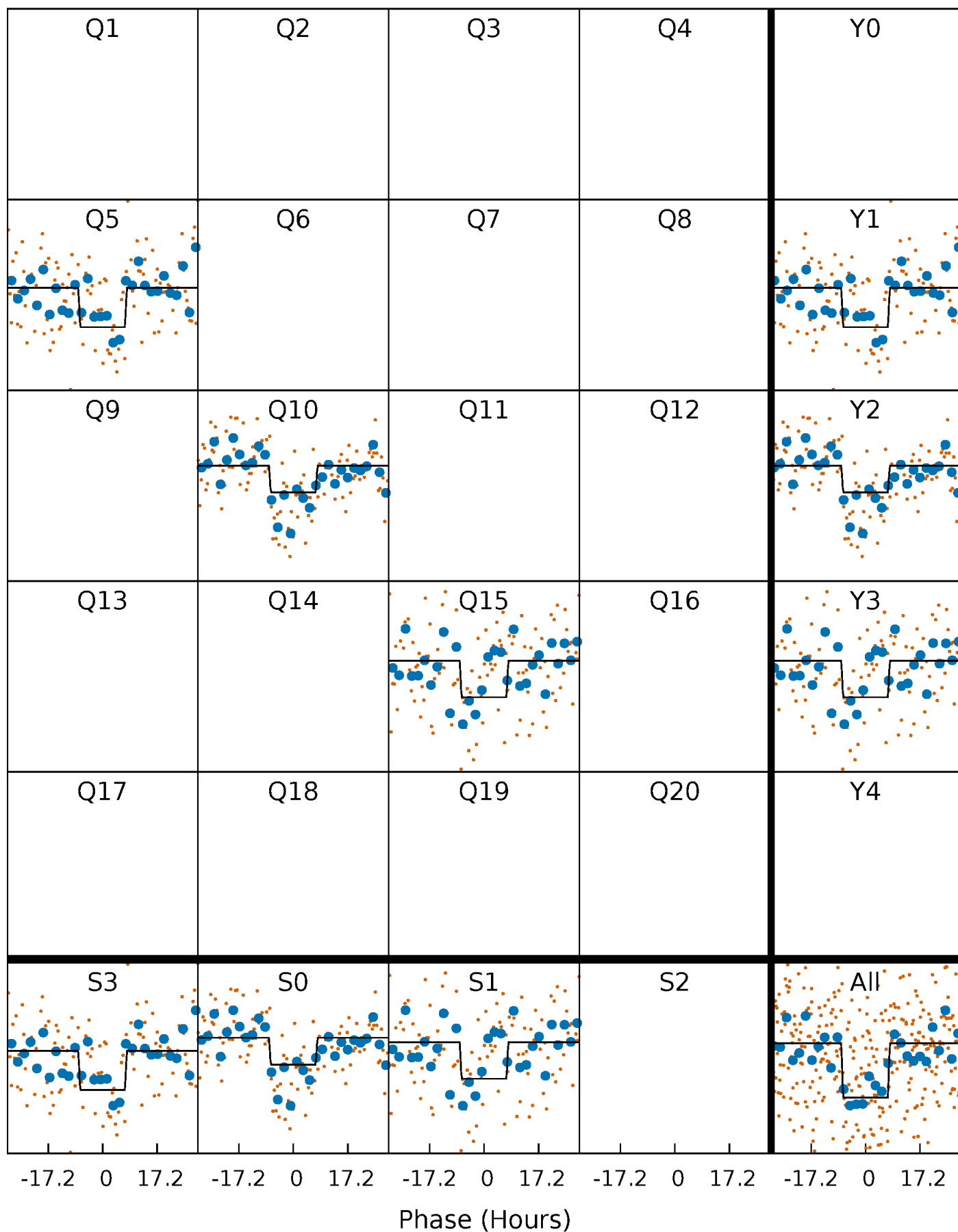
DV Quarter-Phased Transit Curves

TCE 008229540-01 P=471.077271 Days $T_0=446.274558$ (BKJD)



Alt. Detrend Quarter-Phased Transit Curves

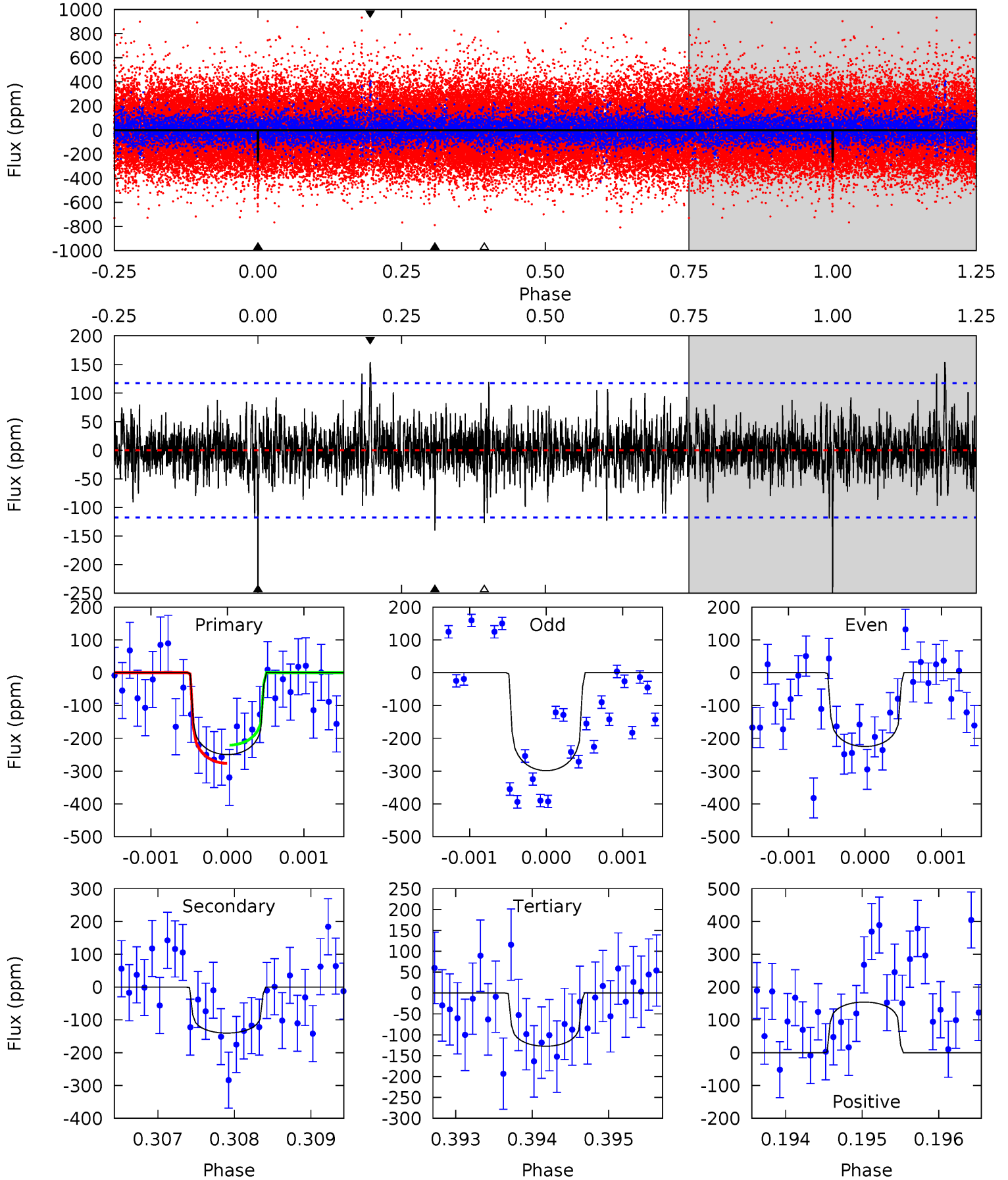
TCE 008229540-01 P=471.170649 Days $T_0=446.202227$ (BKJD)



DV Model-Shift Uniqueness Test

008229540-01, P = 471.077271 Days, E = 446.274558 Days

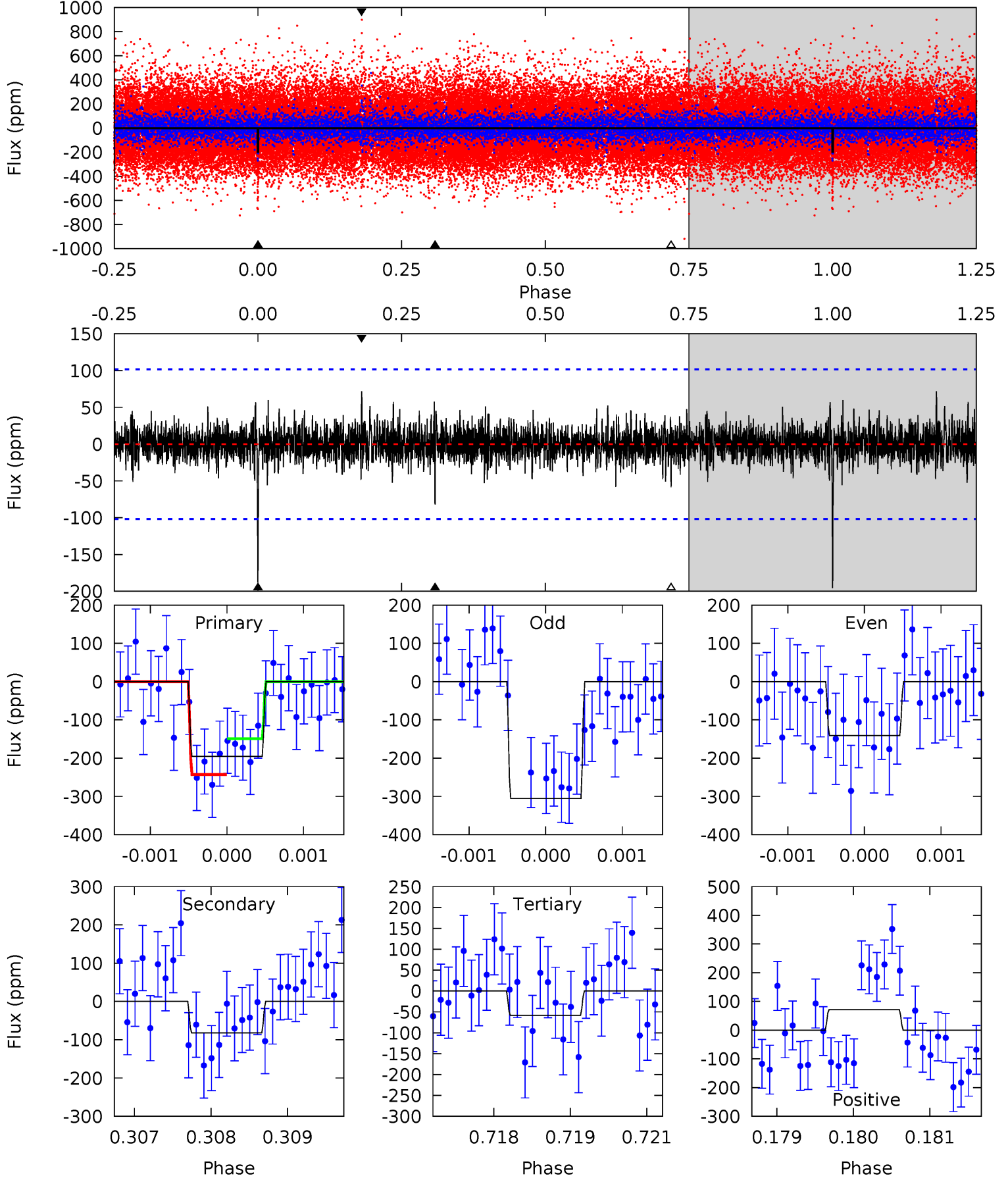
Pri	Sec	Ter	Pos	FA ₁	FA ₂	F _{Red}	Pri-Ter	Pri-Pos	Sec-Ter	Sec-Pos	Odd-Evn	DMM	Shape	TAT
11.6	6.50	5.91	7.15	5.44	3.27	1.41	5.66	4.42	0.60	-0.64	1.63	1.01	0.38	1.28



Alt Model-Shift Uniqueness Test

008229540-01, P = 471.170649 Days, E = 446.202227 Days

Pri	Sec	Ter	Pos	FA ₁	FA ₂	F _{Red}	Pri-Ter	Pri-Pos	Sec-Ter	Sec-Pos	Odd-Evn	DMM	Shape	TAT
10.4	4.35	3.10	3.80	5.40	3.21	0.81	7.27	6.57	1.25	0.54	4.13	1.29	0.27	2.49



Stellar Parameters For KIC 008229540

	$T_{\text{eff}} (K)$	$\log(g)$	$[\text{Fe}/\text{H}]$	$R (R_{\odot})$	$M (M_{\odot})$	$p_{\star} (\text{g}\cdot\text{cm}^{-3})$
	6343^{+171}_{-209}	$4.196^{+0.264}_{-0.176}$	$-0.700^{+0.300}_{-0.300}$	$1.257^{+0.334}_{-0.334}$	$0.905^{+0.117}_{-0.085}$	$0.641^{+1.003}_{-0.303}$
	+3%/-3%	+6%/-4%	+43%/-43%	+27%/-27%	+13%/-9%	+156%/-47%
Source	PHO1	KIC0	KIC0	DSEP		

KIC = Kepler Input Catalog; PHO = Photometry; SPE = Spectroscopy; AST = Asteroseismology
 TRA = Transits; DESP = Dartmouth Models; MULT = Multiple Models

Secondary Eclipse Parameters for KIC 008229540-01 / KOI

Detrend	Depth (ppm)	$R_p (R_{\oplus})$	$T_{\text{max}} (K)$	$T_{\text{obs}} (K)$	A_{obs}
DV	-140 ± 22	$2.15^{+1.23}_{-1.01}$	407^{+32}_{-33}	5429^{+2112}_{-857}	21560^{+57128}_{-12474}
Alt.	-82 ± 19	$1.89^{+1.26}_{-1.04}$	406^{+32}_{-32}	5117^{+2446}_{-888}	16175^{+61454}_{-10069}

T_{max} = Theoretical Maximum Planetary Temperature

T_{obs} = Observed Planetary Temperature (Assuming $A=0.3$)

A_{obs} = Observed Albedo (Assuming $T=0$)

If a secondary eclipse is present, the system is likely an EB if $T_{\text{obs}} \gg T_{\text{max}}$ AND $A_{\text{obs}} \gg 1.0$

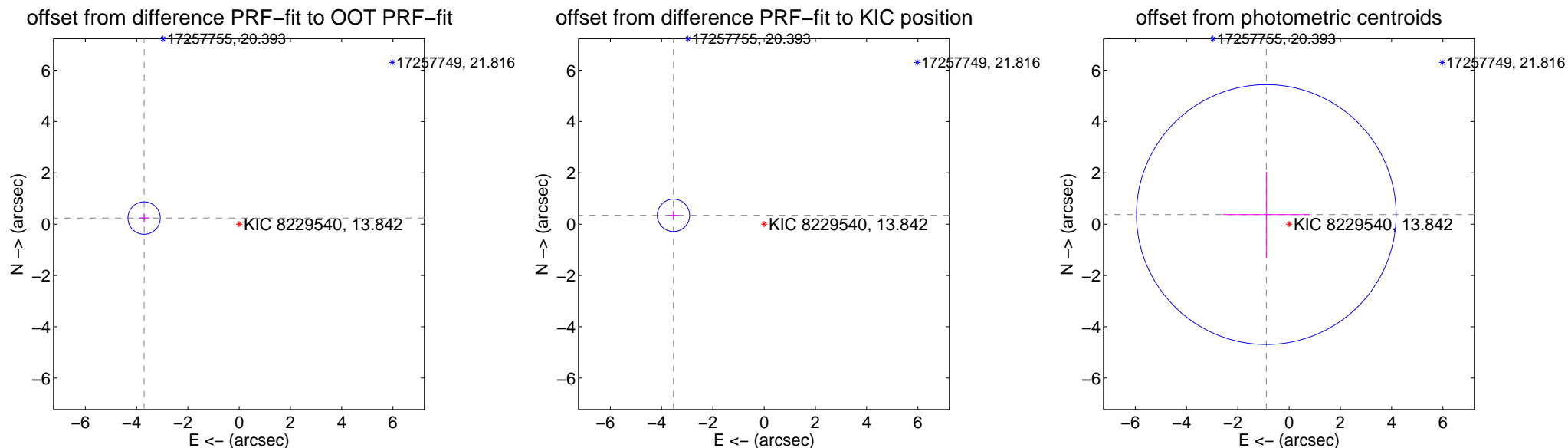
DV Centroid Data

Supplemental centroid analysis for 008229540-01. Kepler magnitude: 13.84. Transit SNR 7.99

There are 1 quarters with good PRF difference image offsets

The direct PRF centroid is offset from the target star catalog position by about 0.20 arcsec

	Distance in arcsec	Distance / σ	Δ RA	Δ Dec
PRF-fit source offset from OOT	3.714 ± 0.210	17.67	3.706 ± 0.210	0.237 ± 0.171
PRF-fit source offset from KIC position	3.552 ± 0.210	16.91	3.536 ± 0.210	0.343 ± 0.171
photometric centroid source offset	0.96 ± 1.69	0.57	0.89 ± 1.69	0.37 ± 1.66

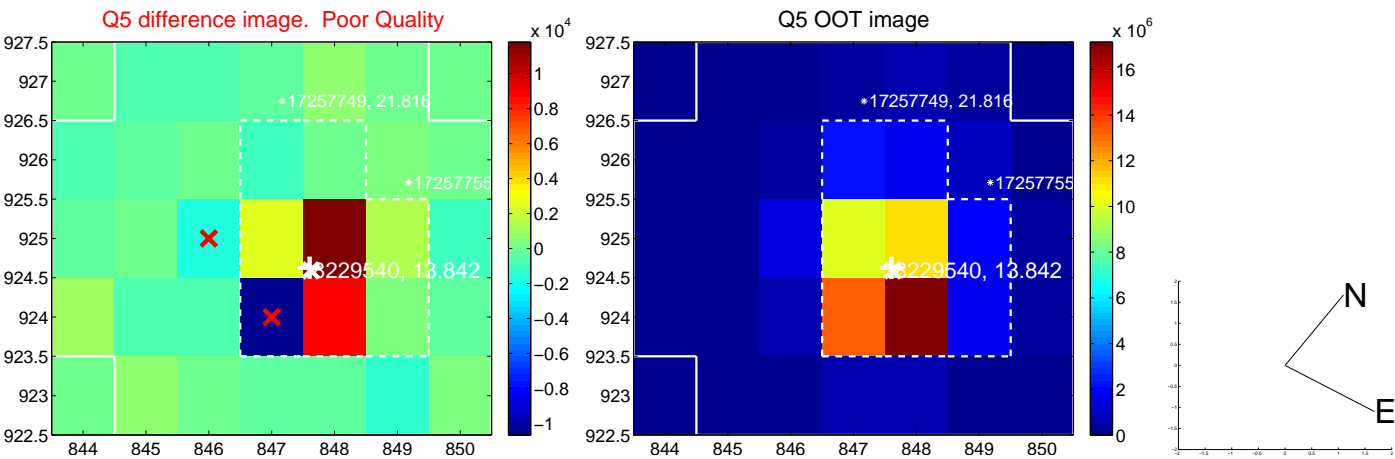


Centroid source offsets from the target star reconstructed from PRF and photometric centroids. Sky blue crosses: good quarterly centroid offsets; Vermillion crosses: bad quarterly centroid offsets; magenta cross: average over quarters. Length of the crosses: one- σ uncertainty. Blue circle: three- σ . Red *: target star. Blue *: Other stars. Text next to a star gives its KIC ID and kepmag. KIC IDs > 15,000,000 are from the UKIRT catalog.

white \times : KIC target position; $+$: OOT centroid; \triangle : difference centroid. red \times : large negative pixel value.



white \times : KIC target position; $+$: OOT centroid; \triangle : difference centroid. red \times : large negative pixel value.



white \times : KIC target position; +: OOT centroid; \triangle : difference centroid. red \times : large negative pixel value.

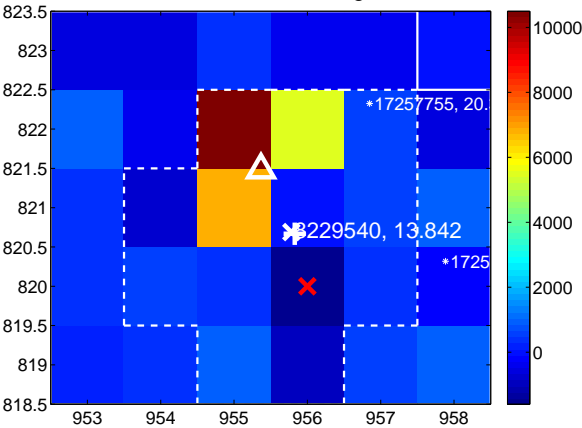
Q9 no difference image



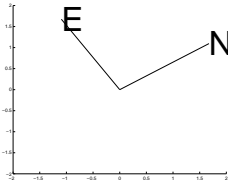
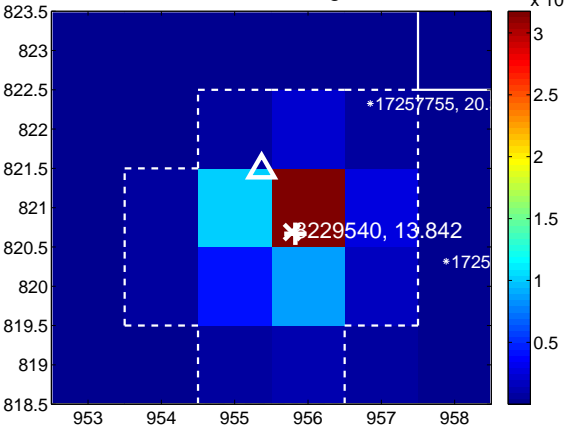
Q9 no OOT image



Q10 difference image



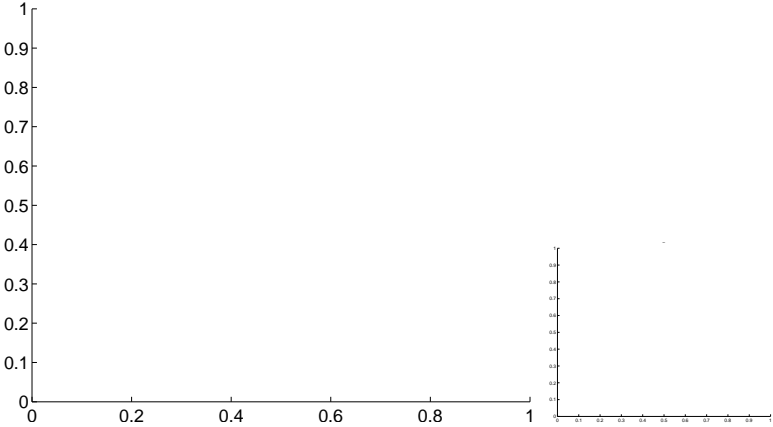
Q10 OOT image



Q11 no difference image



Q11 no OOT image



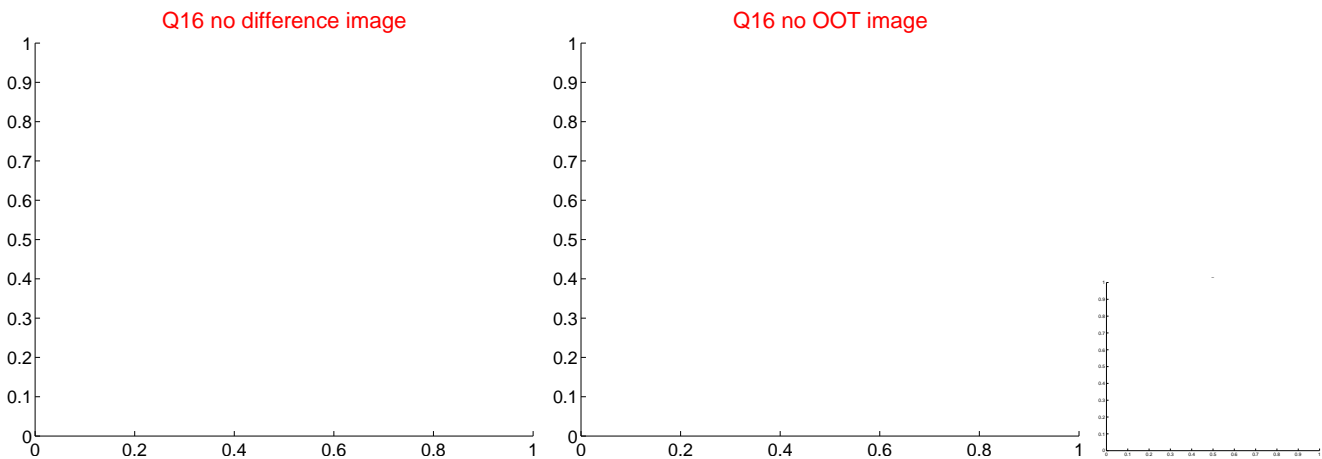
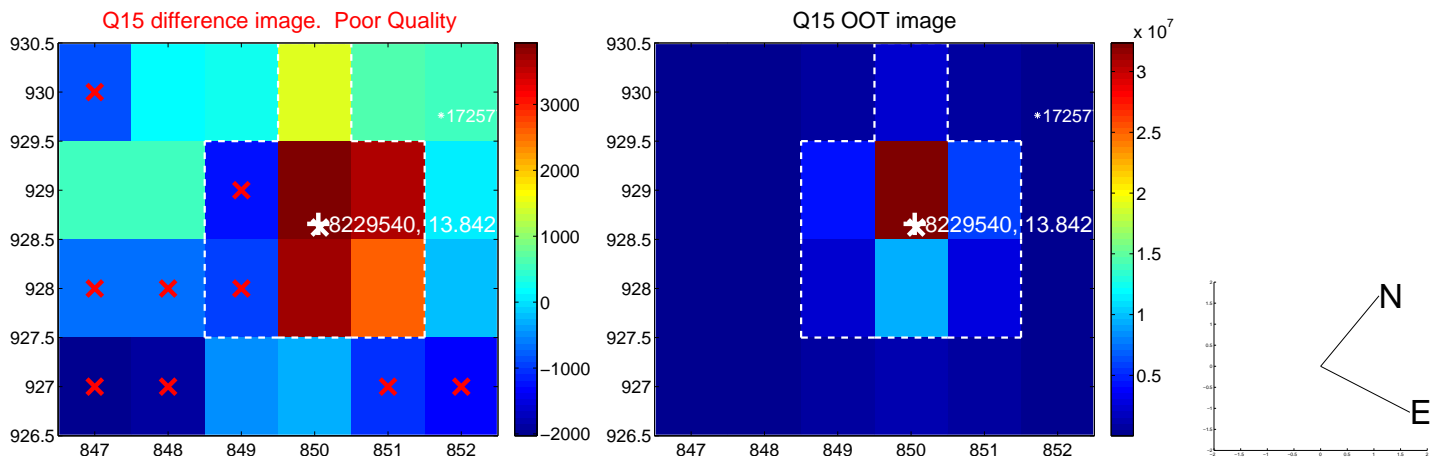
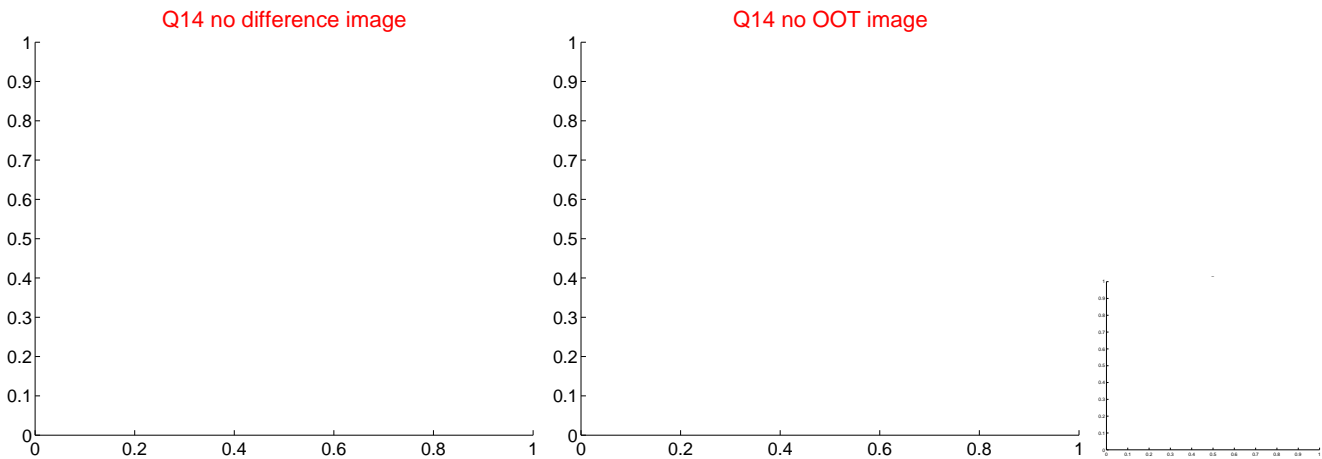
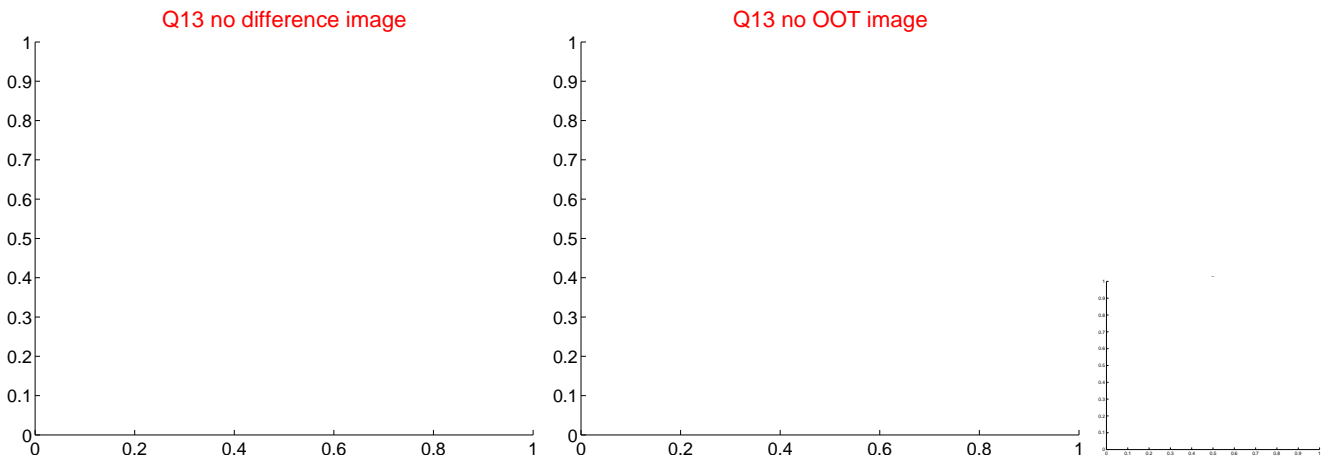
Q12 no difference image



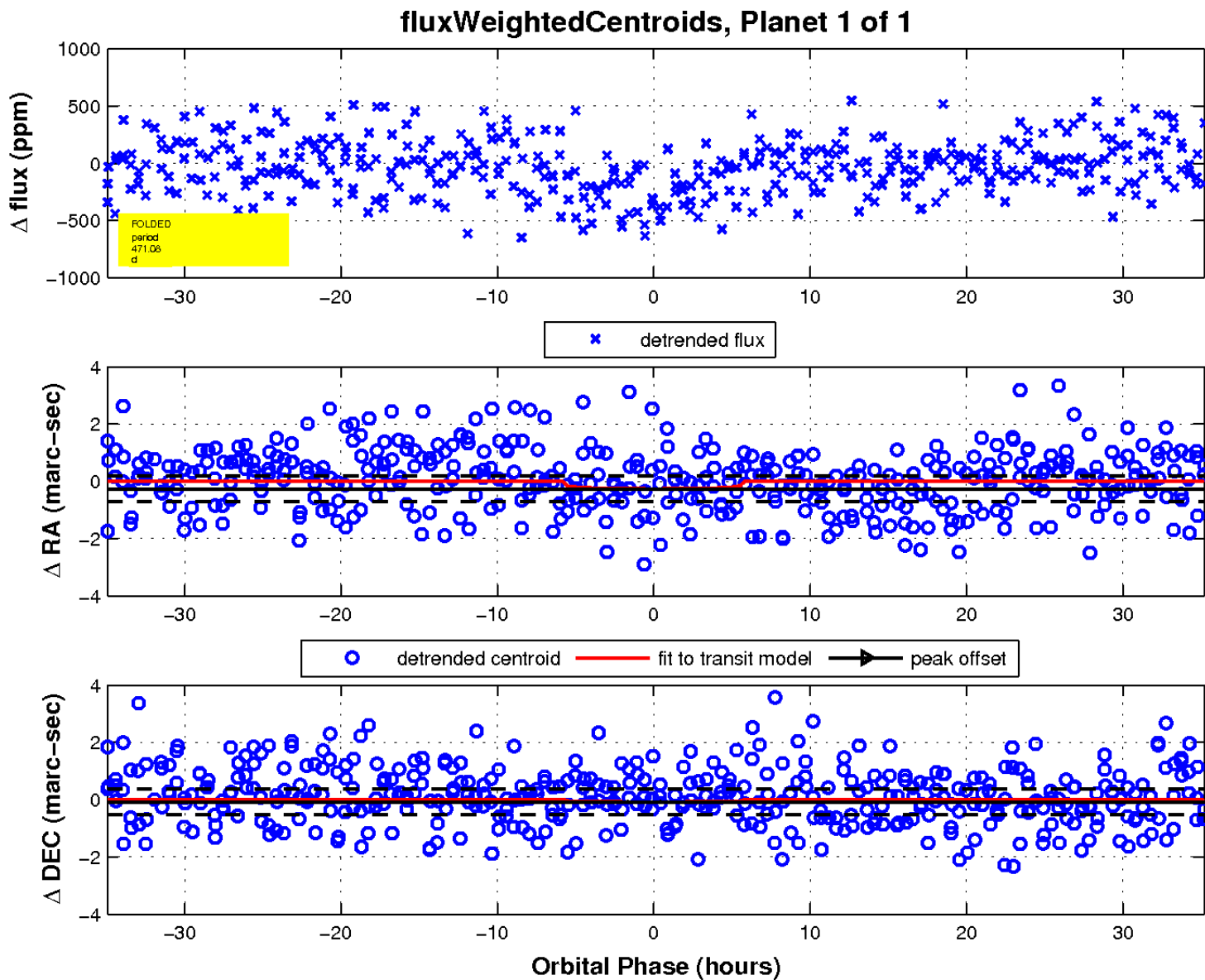
Q12 no OOT image



white \times : KIC target position; $+$: OOT centroid; \triangle : difference centroid. red \times : large negative pixel value.



white \times : KIC target position; $+$: OOT centroid; \triangle : difference centroid. red \times : large negative pixel value.



UKIRT Image

Declination

