

KIC 008161467

Q1-17 DR25 TCE Parameters

TCE	Run Type	KOI?	Period (Days)	Epoch (BKJD)	Depth (ppm)	Duration (Hours)	MES	SNR	R_{\star} (R_{\odot})	T_{\star} (K)	R_p (R_{\oplus})	S_p (S_{\oplus})
008161467-02	OBS	No	376.584344	260.169303	562.0	21.251	8.1	6.7	0.73	4763	1.79	0.29

Robovetter Results

TCE	Run Type	Disp	Score	N	S	C	E	Comments
008161467-02	OBS	FP	0.00	1	0	0	0	INDIV_TRANS_MARSHALL_SKYE—ALL_TRANS_CHASES—CENT_FEW_DIFFS

Notes: OBS = Observed. INJ = Injected. INV = Inverted. SCR = Scrambled.

N = Not Transit-Like. S = Stellar Eclipse. C = Centroid Offset. E = Ephemeris Match.

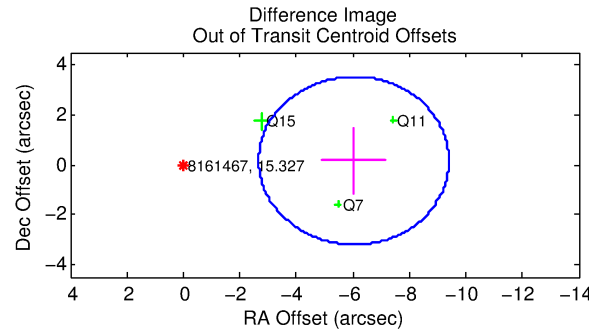
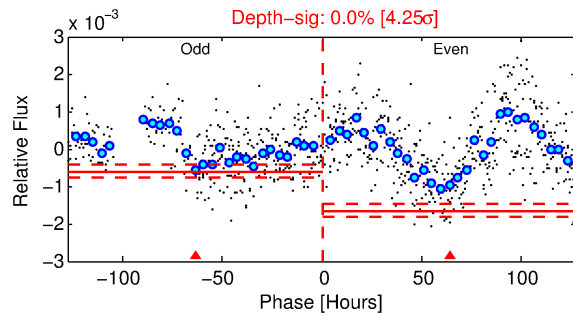
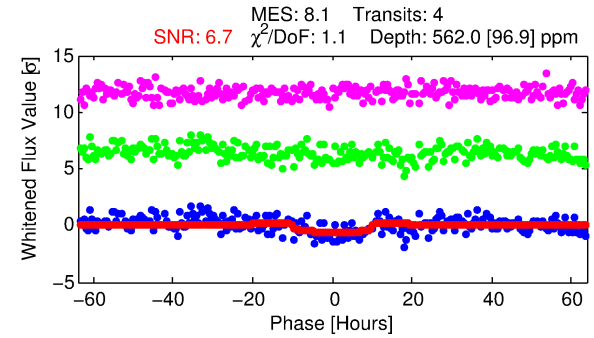
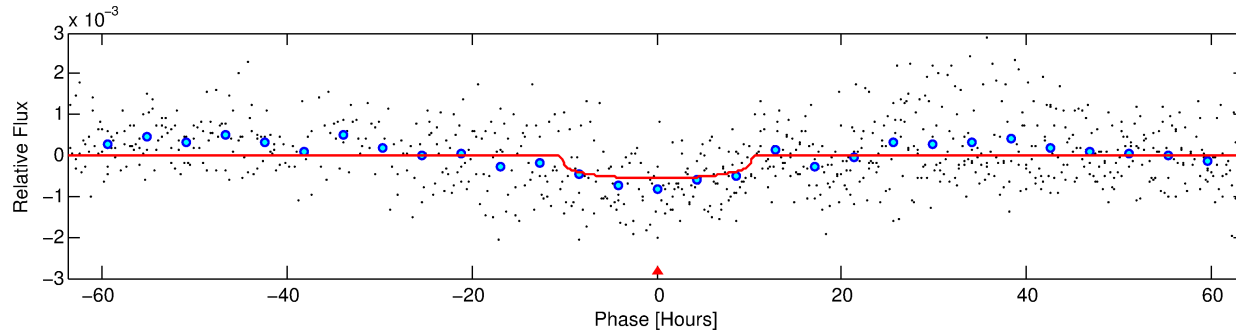
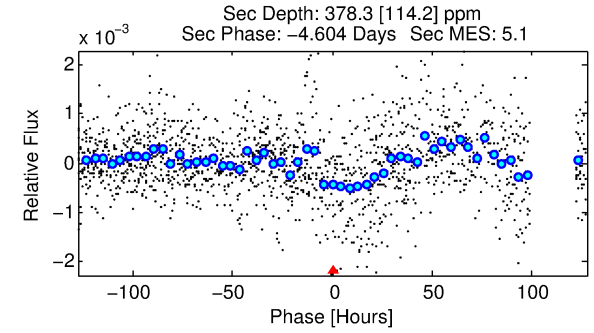
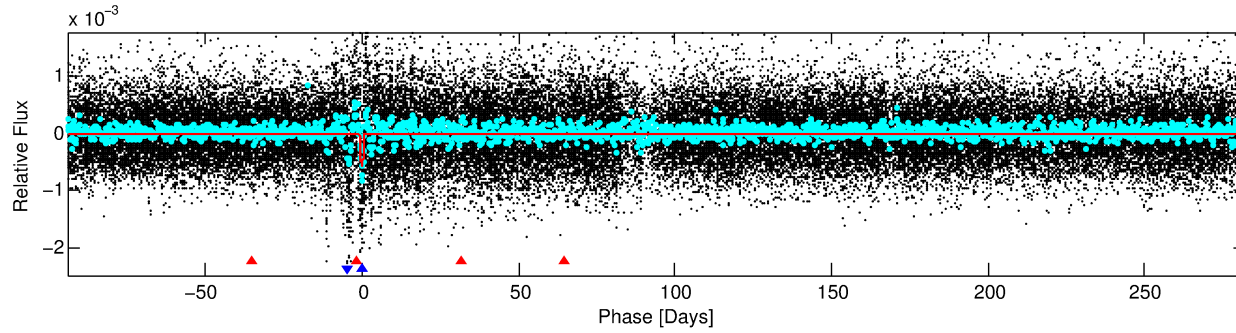
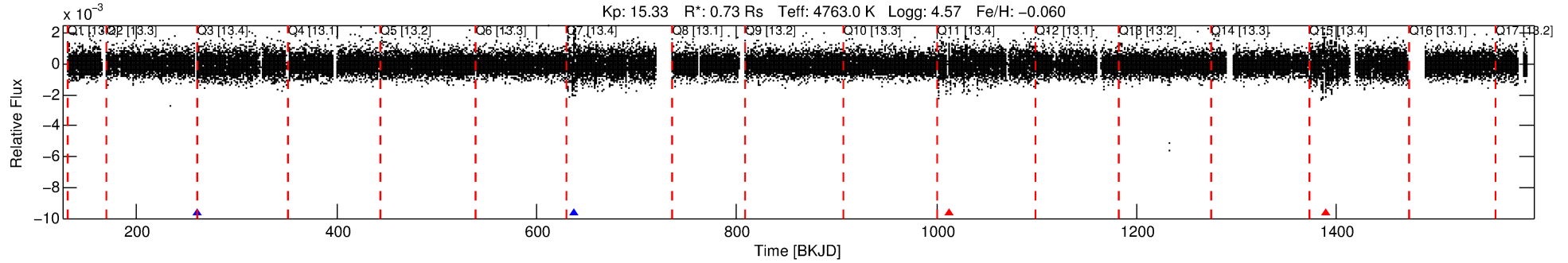
See http://exoplanetarchive.ipac.caltech.edu/docs/API_kepcandidate_columns.html#proj_disp_col for comment definitions.

Ephemeris Match Information For 008161467-02

No Significant Match Found

DV One-Page Summary

KIC: 8161467 Candidate: 2 of 2 Period: 376.584 d



DV Fit Results:

Period = 376.58434 [0.02244] d
Epoch = 260.1693 [0.0445] BKJD
Rp/R* = 0.0226 [0.0138]
a/R* = 109.37 [217.36]
b = 0.63 [1.95]
Seff = 0.29 [0.05]
Teq = 188 [8] K
Rp = 1.79 [1.11] Re
a = 0.9107 [0.0725] AU
Ag = 53787.99 [68119.34] [0.79 σ]
Teffp = 4424 [1401] K [3.02 σ]

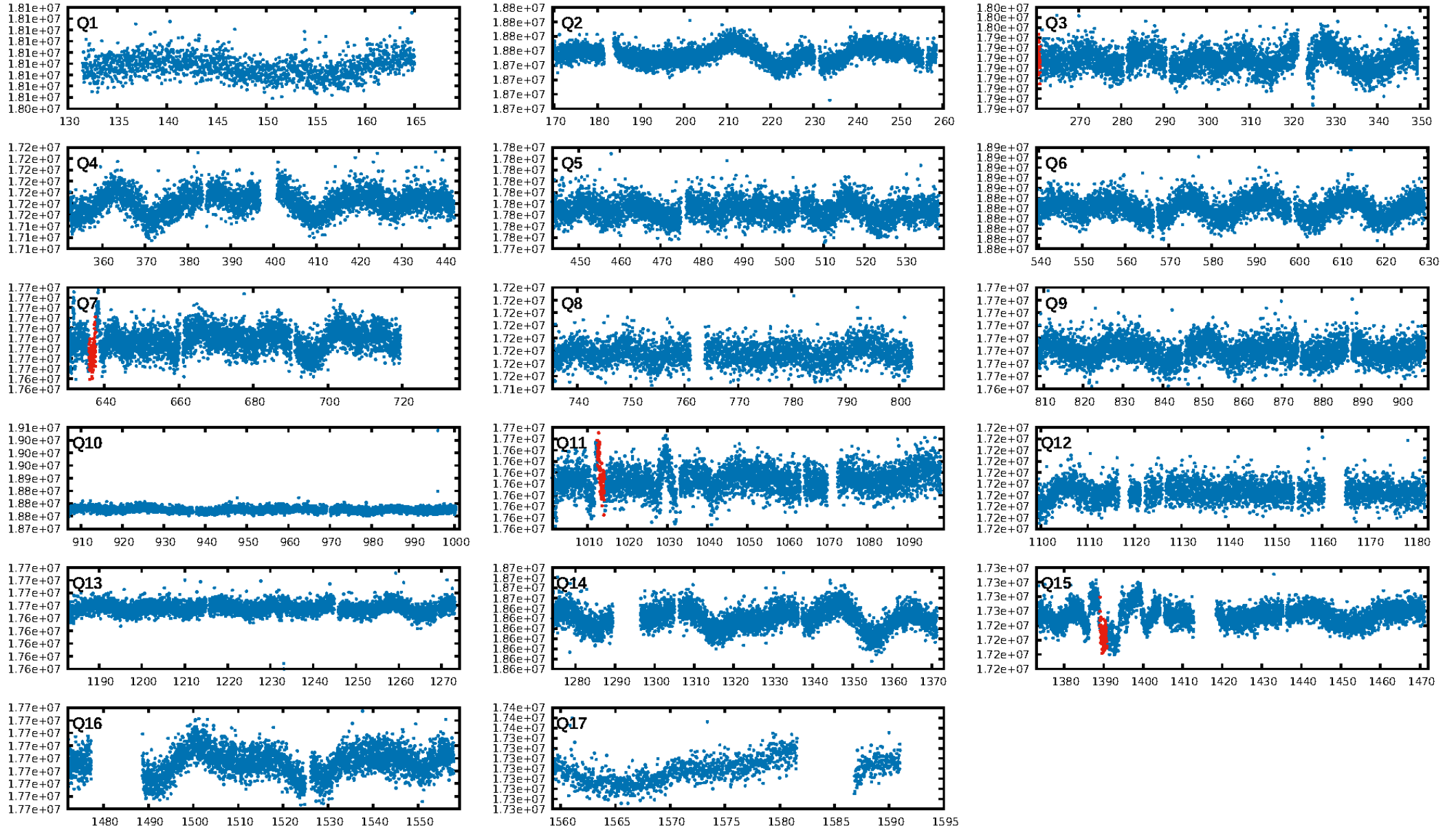
DV Diagnostic Results:

ShortPeriod-sig: 100.0% [31.43 σ]
LongPeriod-sig: N/A
ModelChiSquare2-sig: 0.0%
ModelChiSquareGof-sig: 100.0%
Bootstrap-pfa: 8.81e-10
RollingBand-fgt: 0.50 [2/4]
GhostDiagnostic-chr: 0.306
Centroid-sig: 84.4%
Centroid-so: 1.063 arcsec [0.43 σ]
OotOffset-rm: 6.035 arcsec [5.38 σ]
KicOffset-rm: 6.035 arcsec [5.36 σ]
OotOffset-st: 0/3/0/0 [3]
KicOffset-st: 0/3/0/0 [3]
DiffImageQuality-fgm: 0.00 [0/3]
DiffImageOverlap-fno: 1.00 [3/3]

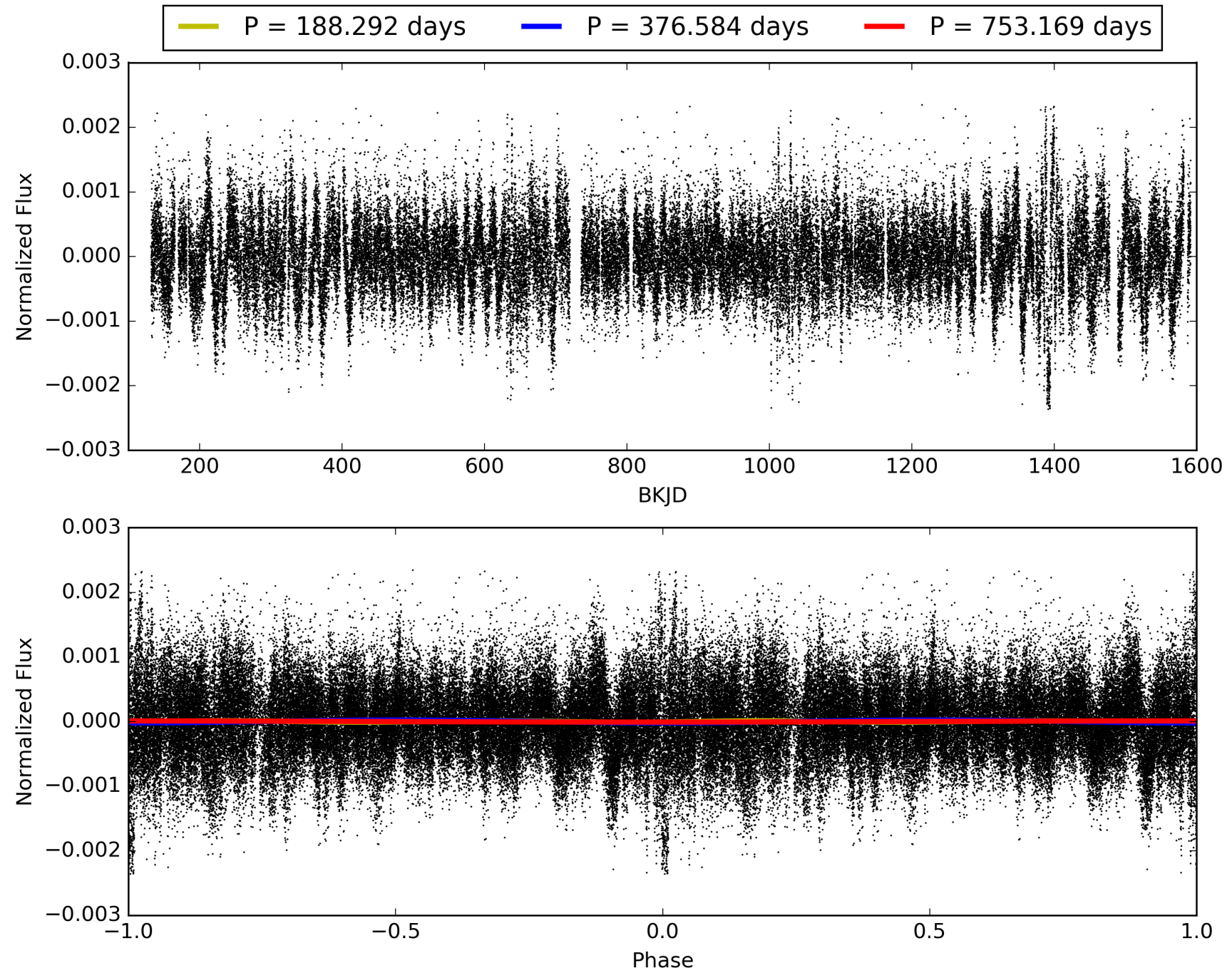
Software Revision: svn+ssh://murzim/repo/soc/tags/release/9.3.42@60958 -- Date Generated: 30-Jan-2016 20:33:23 Z

This Data Validation Report Summary was produced in the Kepler Science Operations Center Pipeline at NASA Ames Research Center

TCE 008161467-02, PDC Light Curves

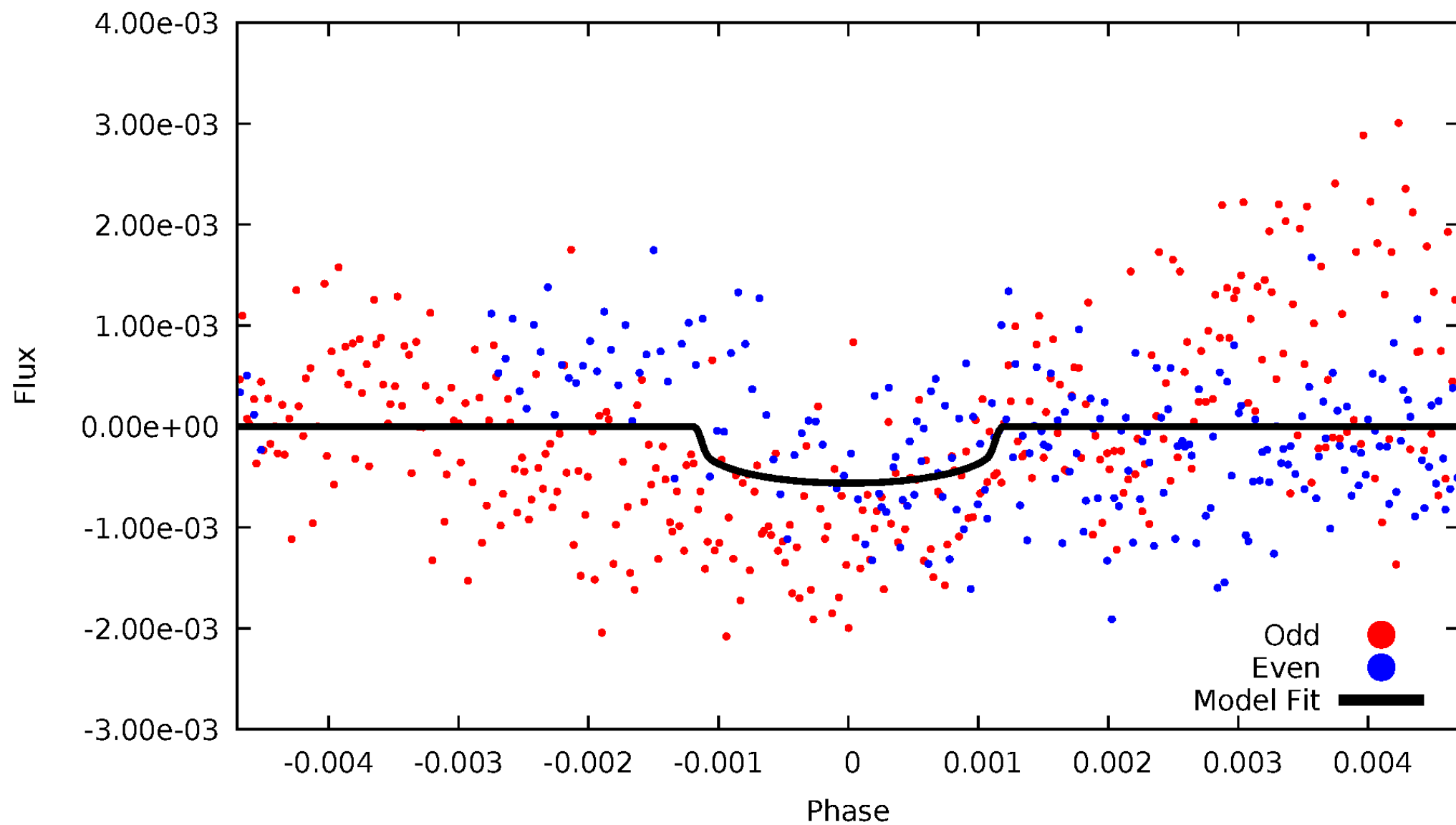


TCE 008161467-02



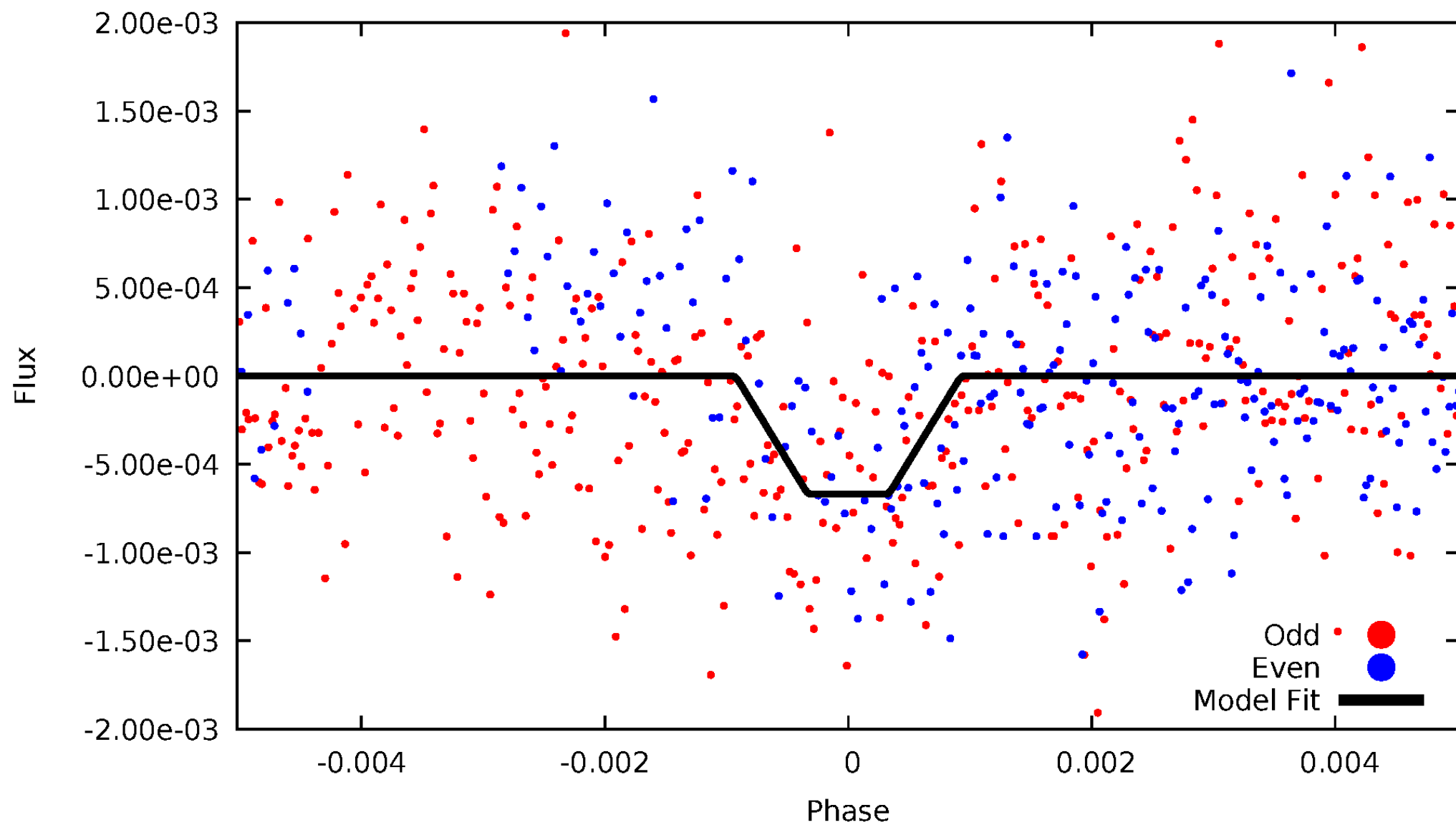
DV Odd/Even

TCE 008161467-02



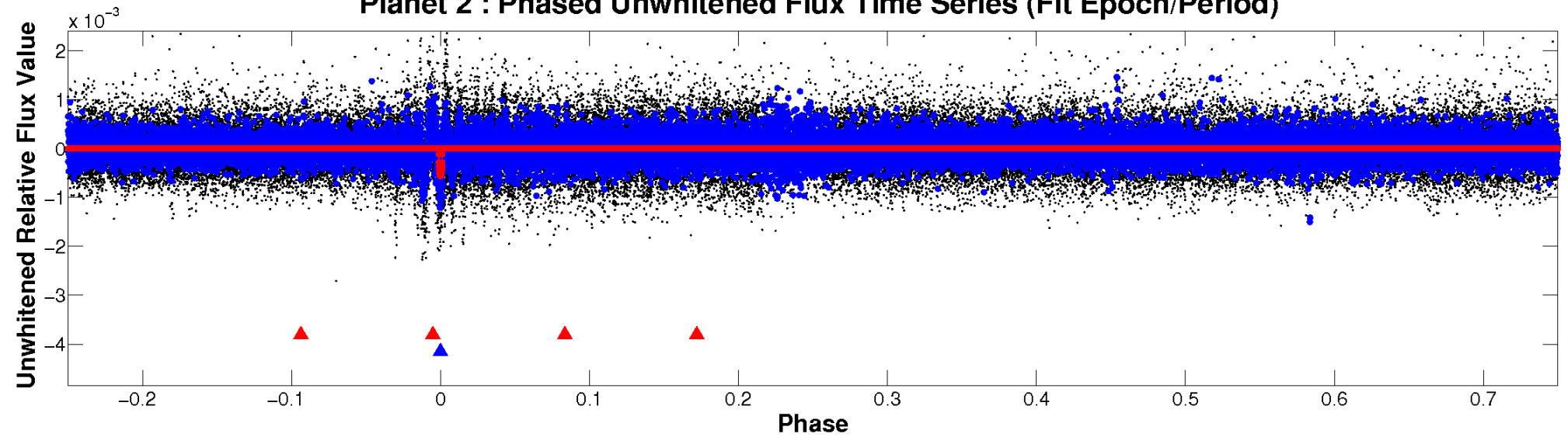
ALT Odd/Even

TCE 008161467-02

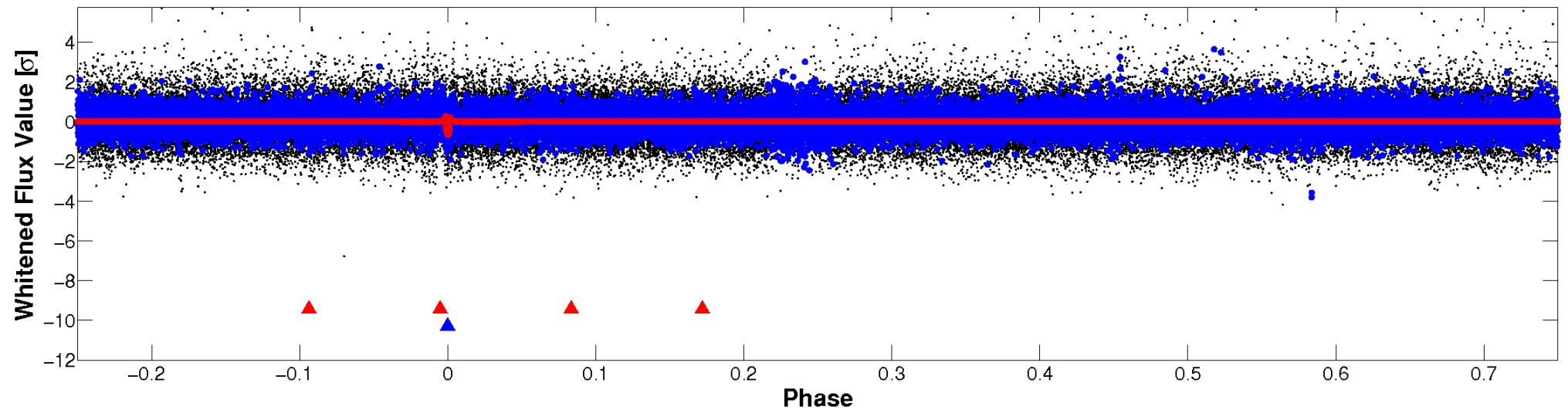


Non-Whitened Vs. Whitened Light Curve

Planet 2 : Phased Unwhitened Flux Time Series (Fit Epoch/Period)

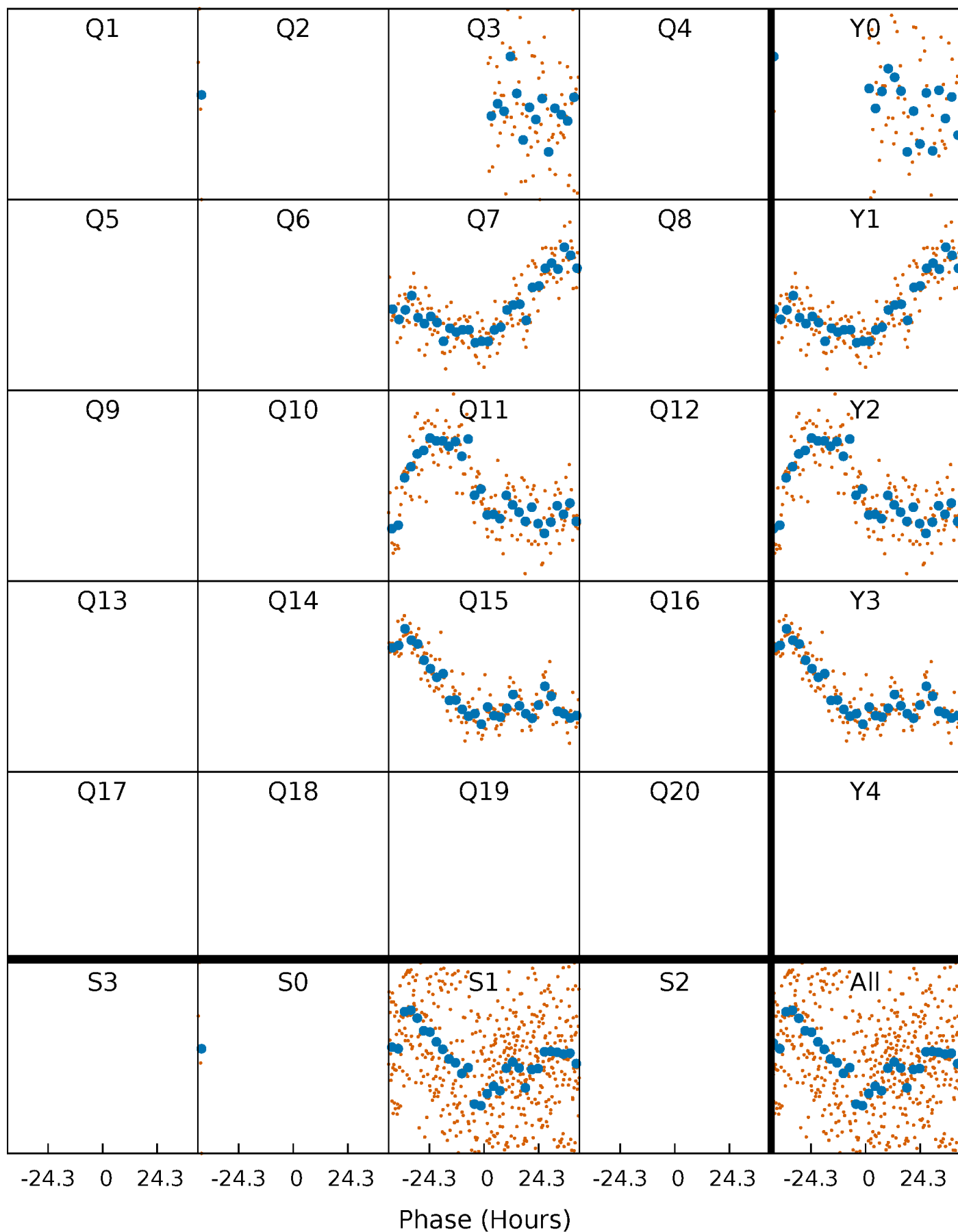


Planet 2 : Phased Whitened Flux Time Series (Fit Epoch/Period)



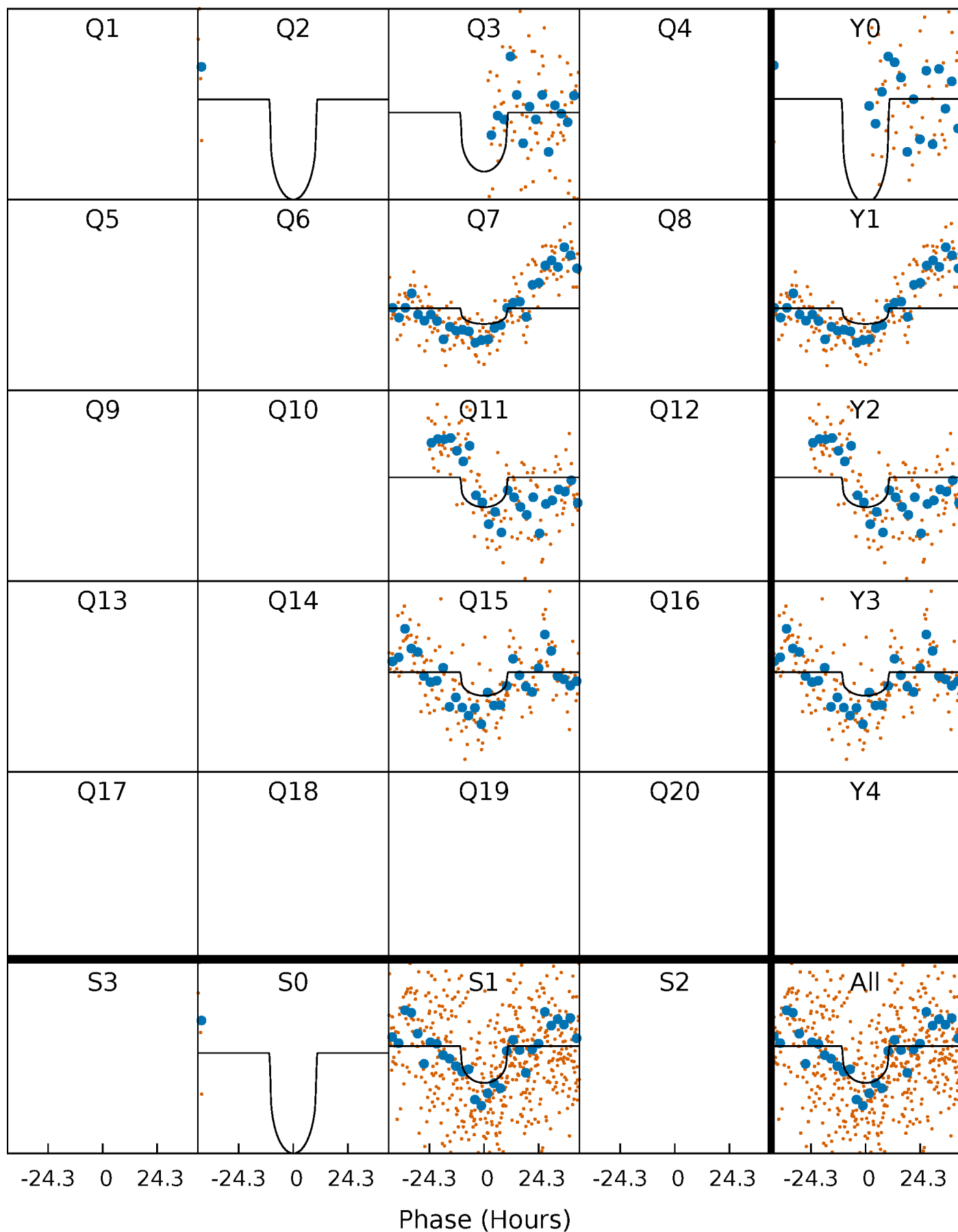
PDC Quarter-Phased Transit Curves

TCE 008161467-02 $P=376.584344$ Days $T_0=260.169303$ (BKJD)



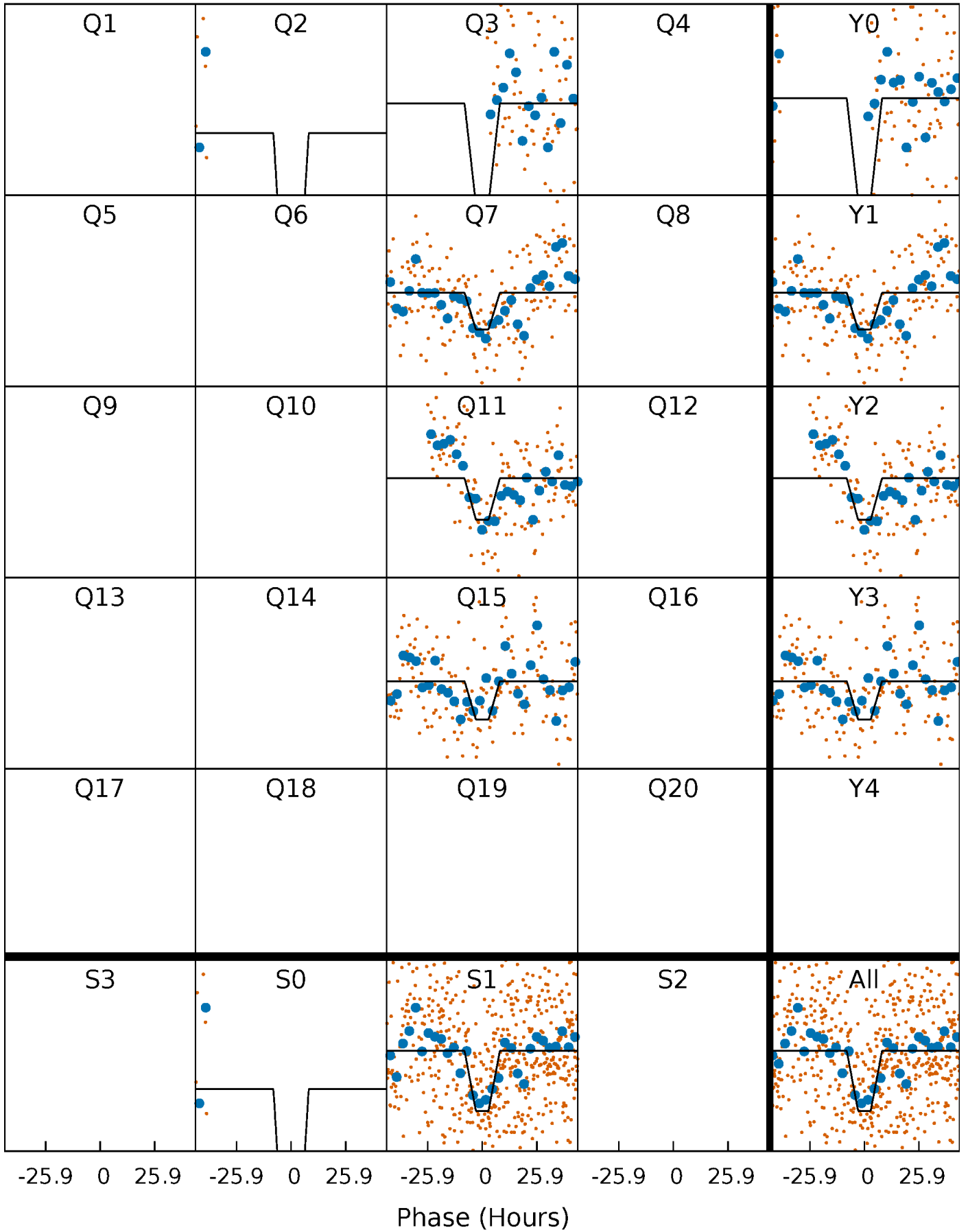
DV Quarter-Phased Transit Curves

TCE 008161467-02 $P=376.584344$ Days $T_0=260.169303$ (BKJD)



Alt. Detrend Quarter-Phased Transit Curves

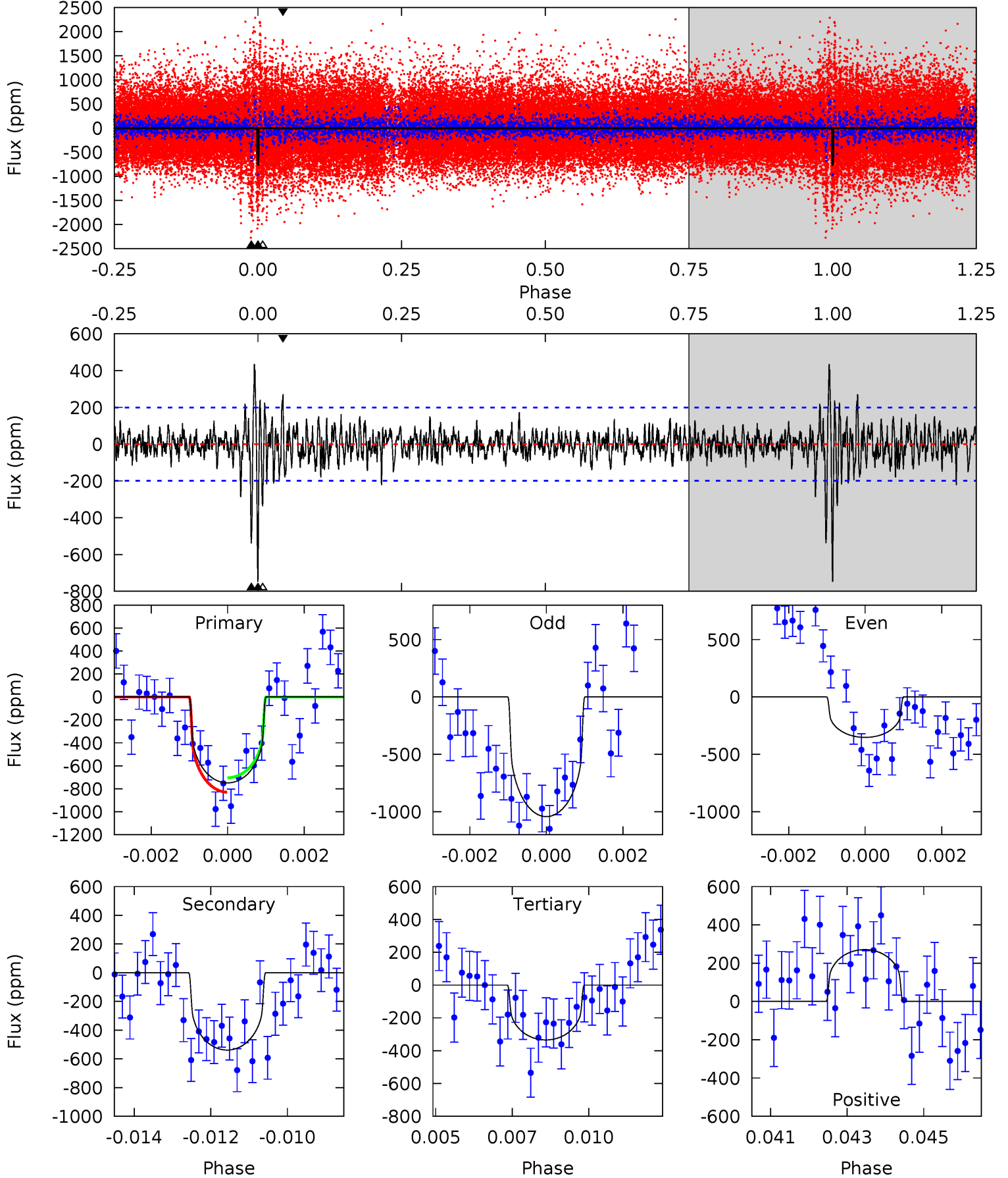
TCE 008161467-02 P=376.617755 Days $T_0=260.141525$ (BKJD)



DV Model-Shift Uniqueness Test

008161467-02, P = 376.584344 Days, E = 260.169303 Days

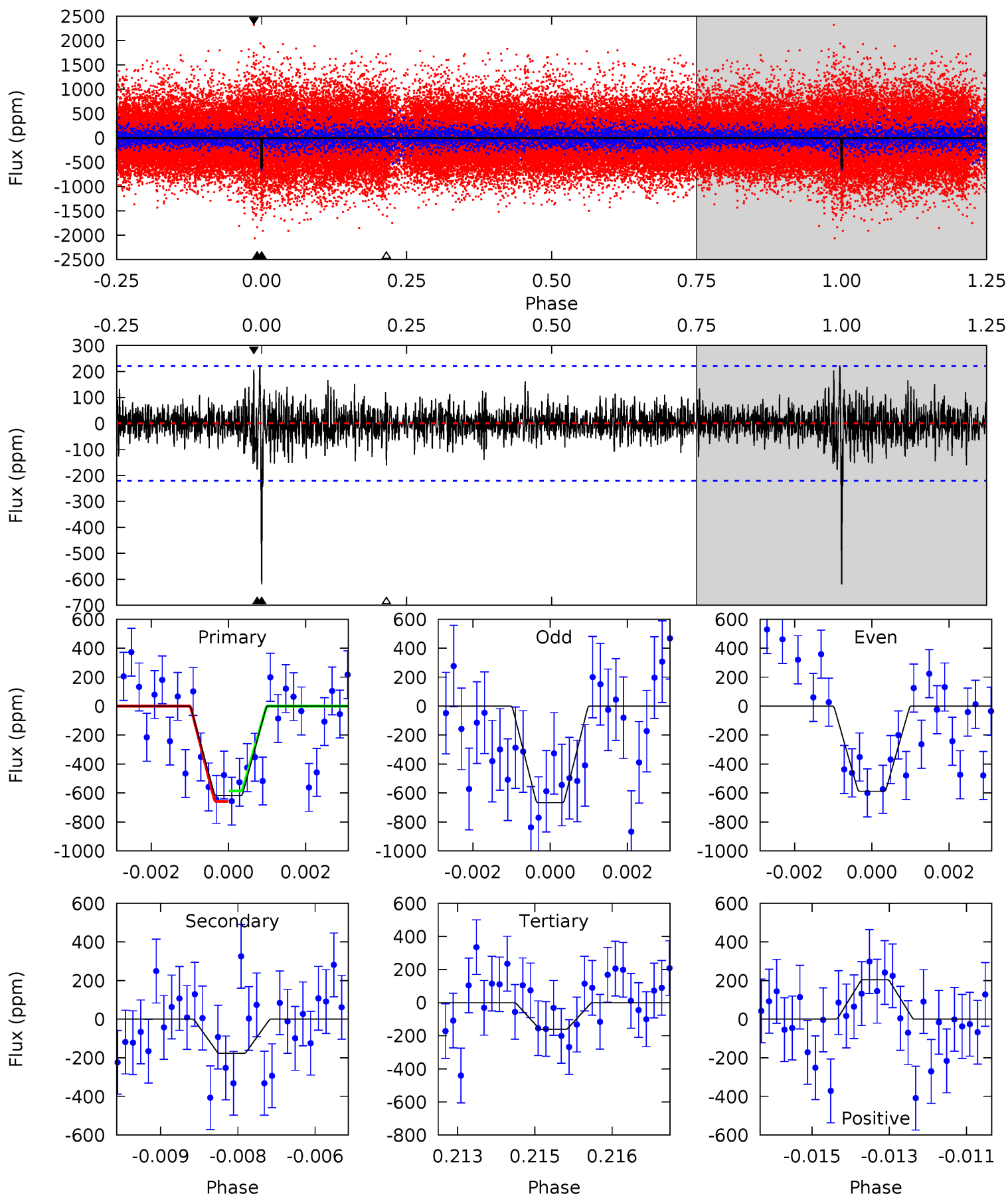
Pri	Sec	Ter	Pos	FA ₁	FA ₂	F _{Red}	Pri-Ter	Pri-Pos	Sec-Ter	Sec-Pos	Odd-Evn	DMM	Shape	TAT
19.9	14.3	8.91	7.21	5.29	3.04	1.74	11.0	12.7	5.43	7.13	9.08	0.90	0.37	1.65



Alt Model-Shift Uniqueness Test

008161467-02, P = 376.617755 Days, E = 260.141525 Days

Pri	Sec	Ter	Pos	FA ₁	FA ₂	F _{Red}	Pri-Ter	Pri-Pos	Sec-Ter	Sec-Pos	Odd-Evn	DMM	Shape	TAT
15.0	4.26	3.89	4.93	5.34	3.11	1.08	11.1	10.0	0.37	-0.66	0.93	0.89	0.26	0.87



Stellar Parameters For KIC 008161467

	$T_{\text{eff}}(K)$	$\log(g)$	[Fe/H]	$R (R_{\odot})$	$M(M_{\odot})$	$p_{\star} (g \cdot \text{cm}^{-3})$
	4763^{+143}_{-129}	$4.565^{+0.063}_{-0.032}$	$-0.060^{+0.300}_{-0.300}$	$0.728^{+0.052}_{-0.069}$	$0.711^{+0.074}_{-0.059}$	$2.590^{+0.683}_{-0.331}$
	+3%/-3%	+1%/-1%	+500%/-500%	+7%/-9%	+10%/-8%	+26%/-13%
Source	PHO1	KIC0	KIC0	DSEP		

KIC = Kepler Input Catalog; PHO = Photometry; SPE = Spectroscopy; AST = Asteroseismology
 TRA = Transits; DESP = Dartmouth Models; MULT = Multiple Models

Secondary Eclipse Parameters for KIC 008161467-02 / KOI

Detrend	Depth (ppm)	$R_p (R_{\oplus})$	$T_{max} (K)$	$T_{obs} (K)$	A_{obs}
DV	-539 ± 38	$1.80^{+1.06}_{-0.99}$	261^{+9}_{-9}	4812^{+2258}_{-772}	$78353^{+295031}_{-48761}$
Alt.	-176 ± 41	$2.03^{+1.07}_{-1.06}$	261^{+10}_{-9}	3749^{+1164}_{-530}	20093^{+64940}_{-12465}

T_{max} = Theoretical Maximum Planetary Temperature

T_{obs} = Observed Planetary Temperature (Assuming A=0.3)

A_{obs} = Observed Albedo (Assuming T=0)

If a secondary eclipse is present, the system is likely an EB if $T_{obs} \gg T_{max}$ AND $A_{obs} \gg 1.0$

DV Centroid Data

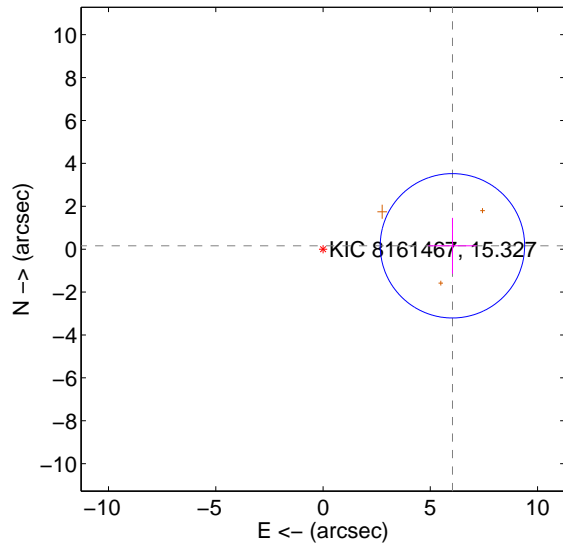
Supplemental centroid analysis for 008161467-02. Kepler magnitude: 15.33. Transit SNR 6.69

There are 0 quarters with good PRF difference image offsets

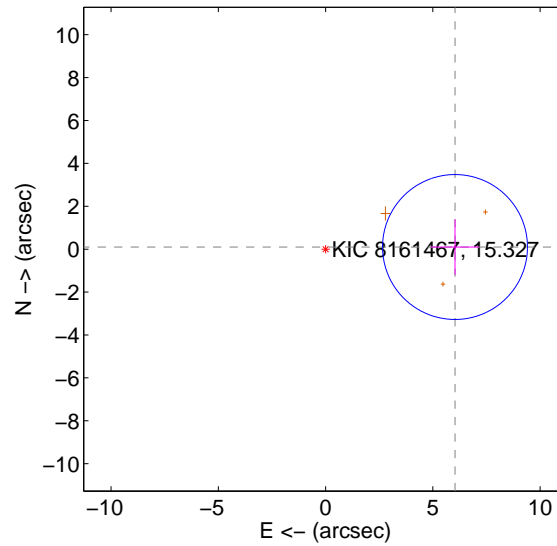
The direct PRF centroid is offset from the target star catalog position by about 0.09 arcsec

	Distance in arcsec	Distance / σ	Δ RA	Δ Dec
PRF-fit source offset from OOT	6.035 ± 1.122	5.38	-6.033 ± 1.122	0.157 ± 1.305
PRF-fit source offset from KIC position	6.035 ± 1.122	5.36	-6.034 ± 1.126	0.101 ± 1.298
photometric centroid source offset	1.06 ± 2.46	0.43	0.84 ± 2.47	-0.65 ± 2.45

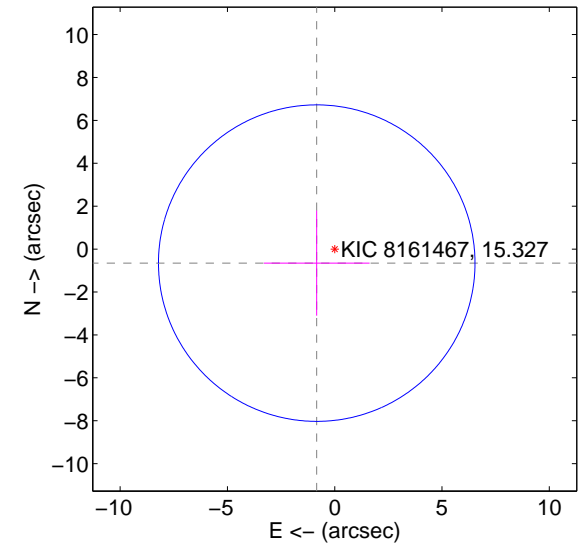
offset from difference PRF-fit to OOT PRF-fit



offset from difference PRF-fit to KIC position



offset from photometric centroids



Centroid source offsets from the target star reconstructed from PRF and photometric centroids. Sky blue crosses: good quarterly centroid offsets; Vermillion crosses: bad quarterly centroid offsets; magenta cross: average over quarters. Length of the crosses: one- σ uncertainty. Blue circle: three- σ . Red *: target star. Blue *: Other stars. Text next to a star gives its KIC ID and kepmag. KIC IDs > 15,000,000 are from the UKIRT catalog.

white \times : KIC target position; $+$: OOT centroid; \triangle : difference centroid. red \times : large negative pixel value.



white \times : KIC target position; $+$: OOT centroid; \triangle : difference centroid. red \times : large negative pixel value.

Q5 no difference image



Q5 no OOT image



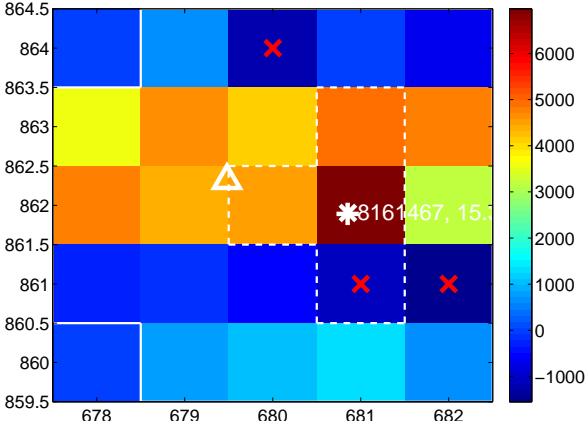
Q6 no difference image



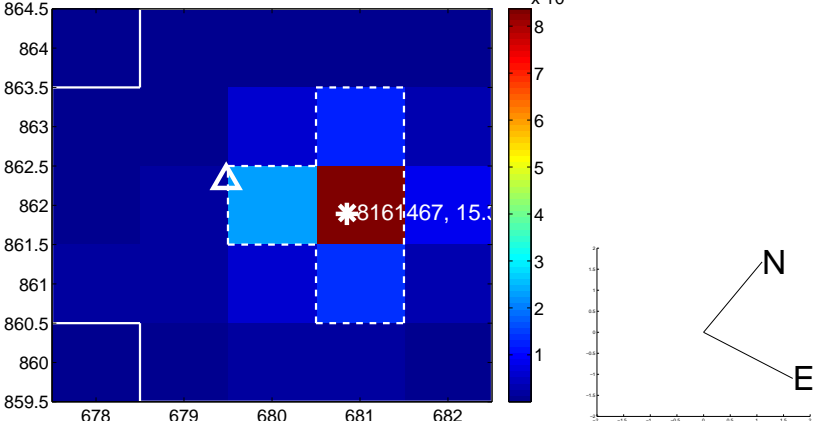
Q6 no OOT image



Q7 difference image. Poor Quality



Q7 OOT image



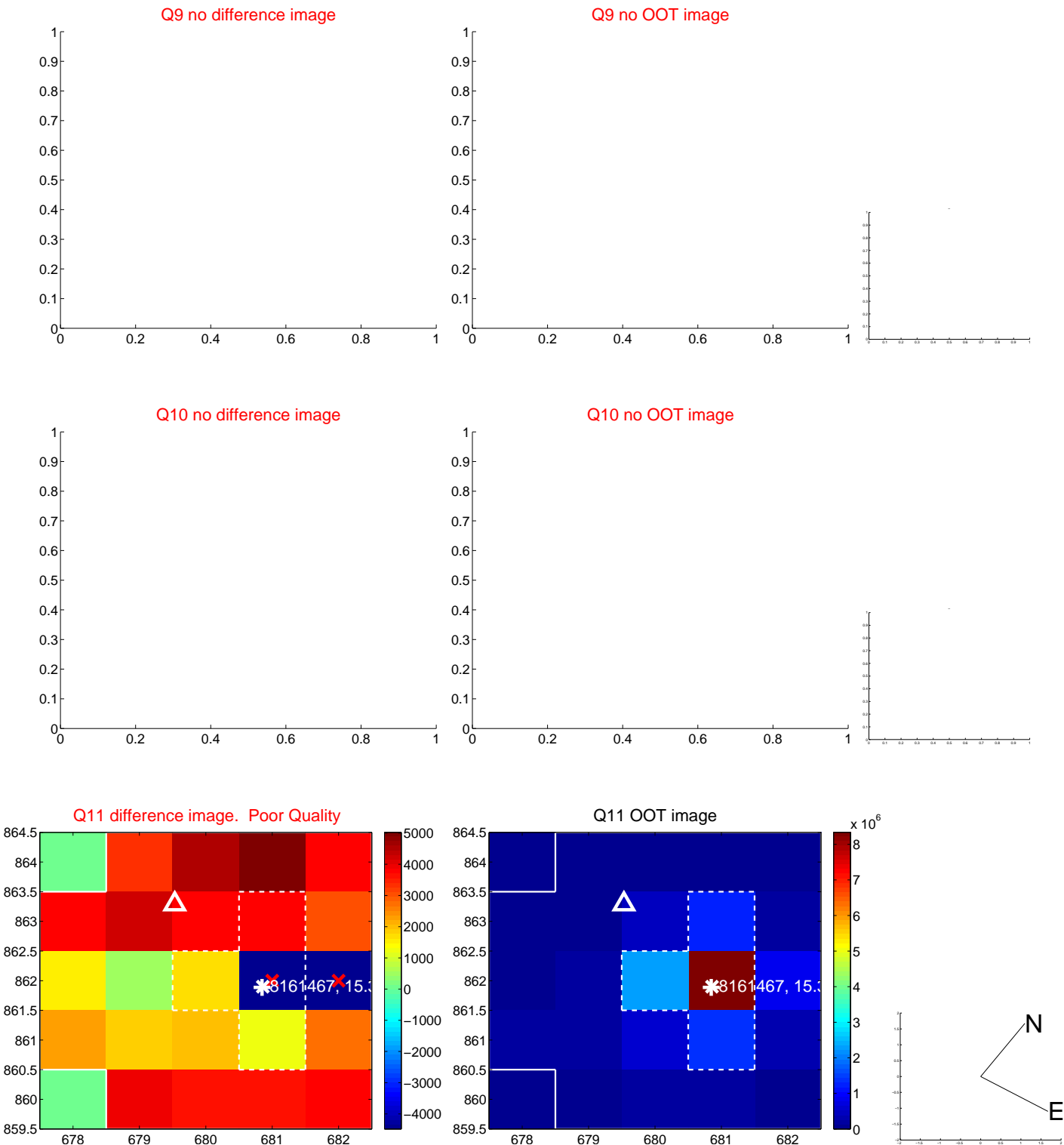
Q8 no difference image



Q8 no OOT image



white \times : KIC target position; $+$: OOT centroid; \triangle : difference centroid. red \times : large negative pixel value.



white \times : KIC target position; $+$: OOT centroid; \triangle : difference centroid. red \times : large negative pixel value.

Q13 no difference image



Q13 no OOT image



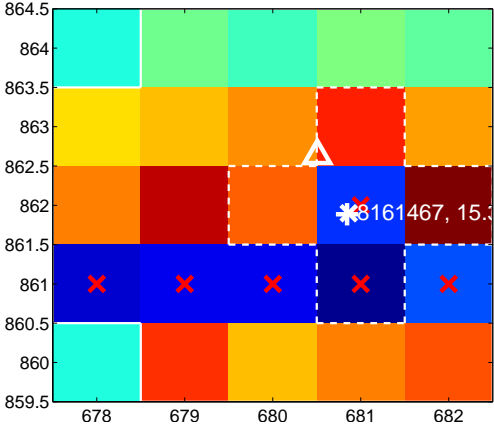
Q14 no difference image



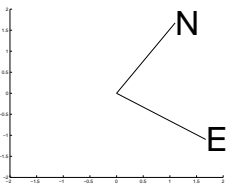
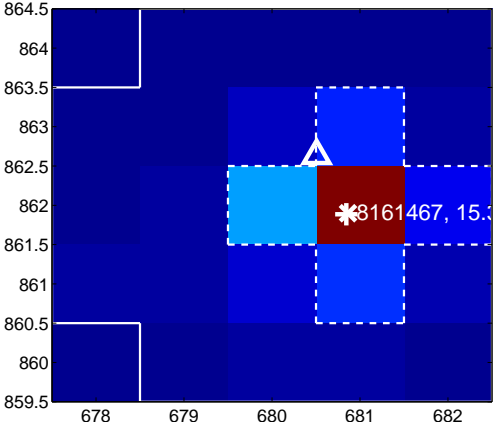
Q14 no OOT image



Q15 difference image. Poor Quality



Q15 OOT image



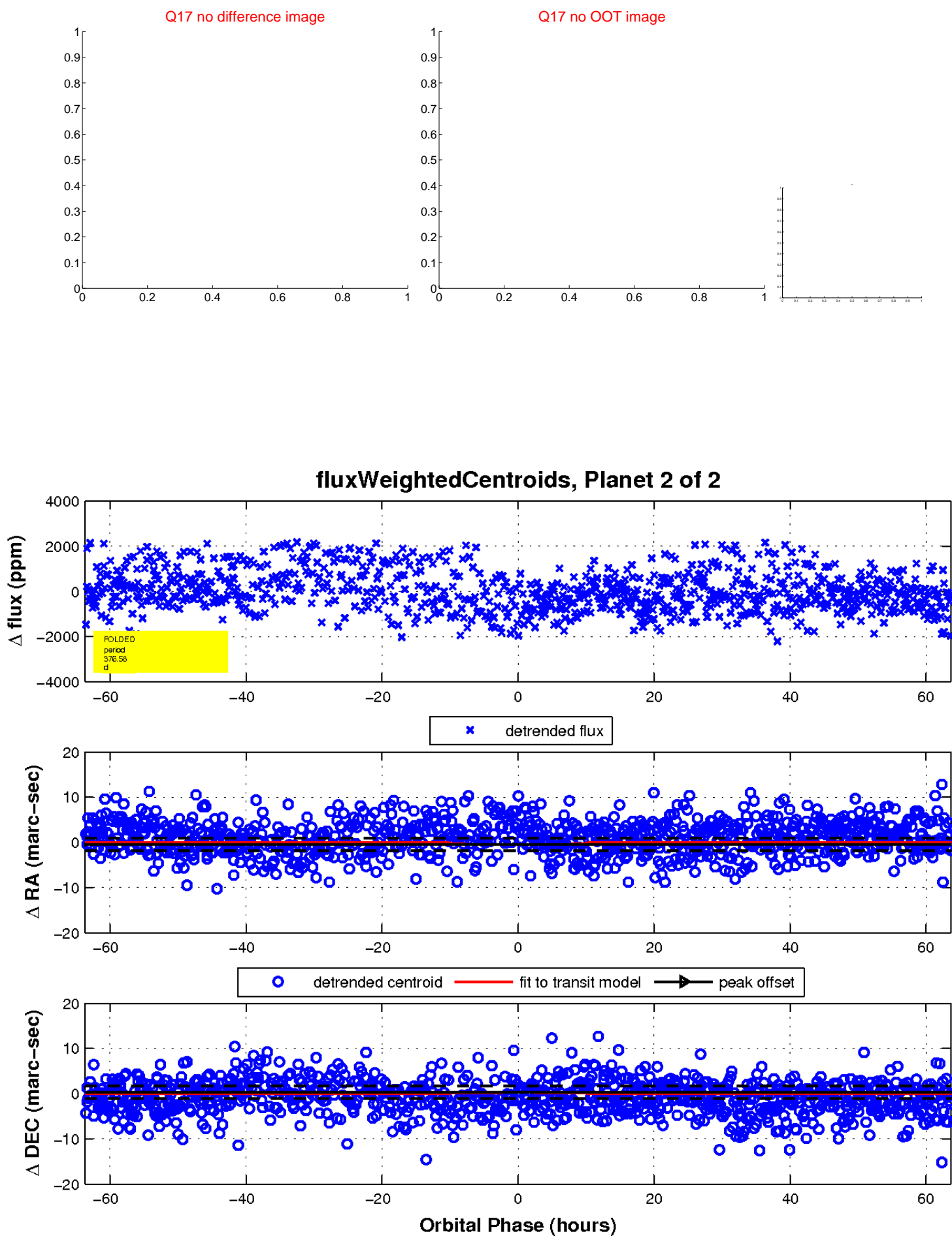
Q16 no difference image



Q16 no OOT image



white \times : KIC target position; $+$: OOT centroid; \triangle : difference centroid. red \times : large negative pixel value.



UKIRT Image

Declination

