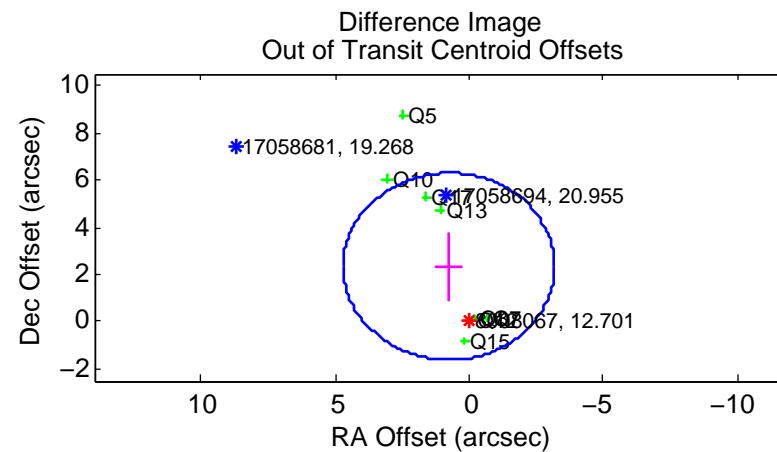
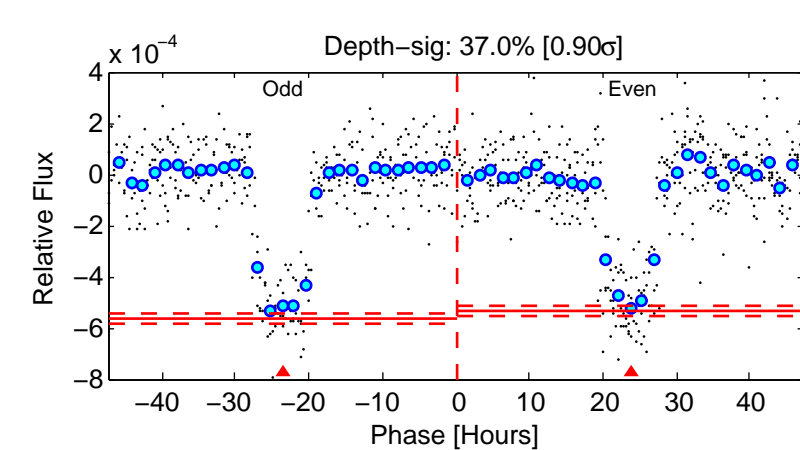
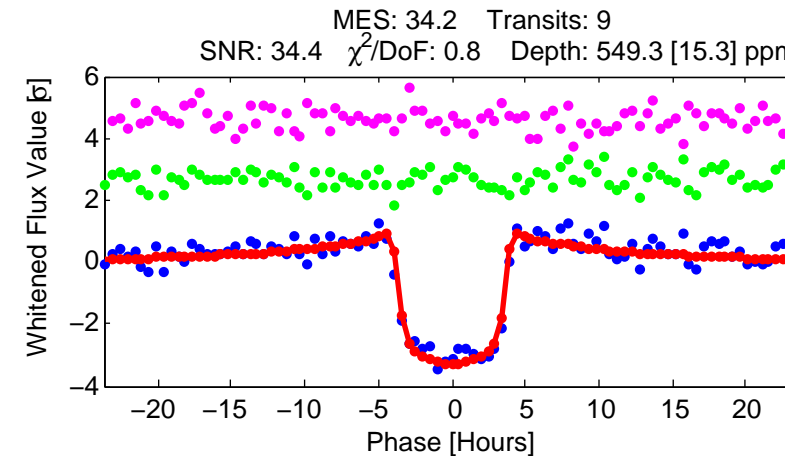
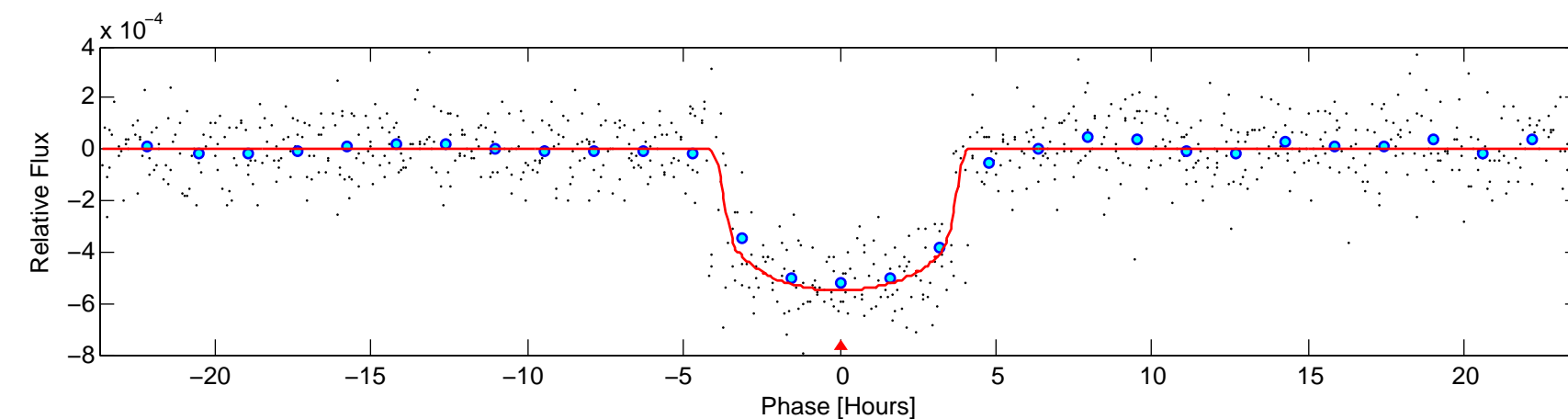
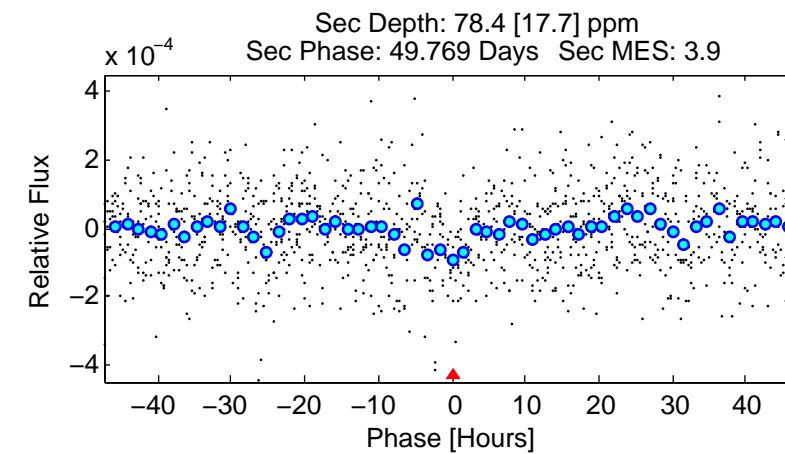
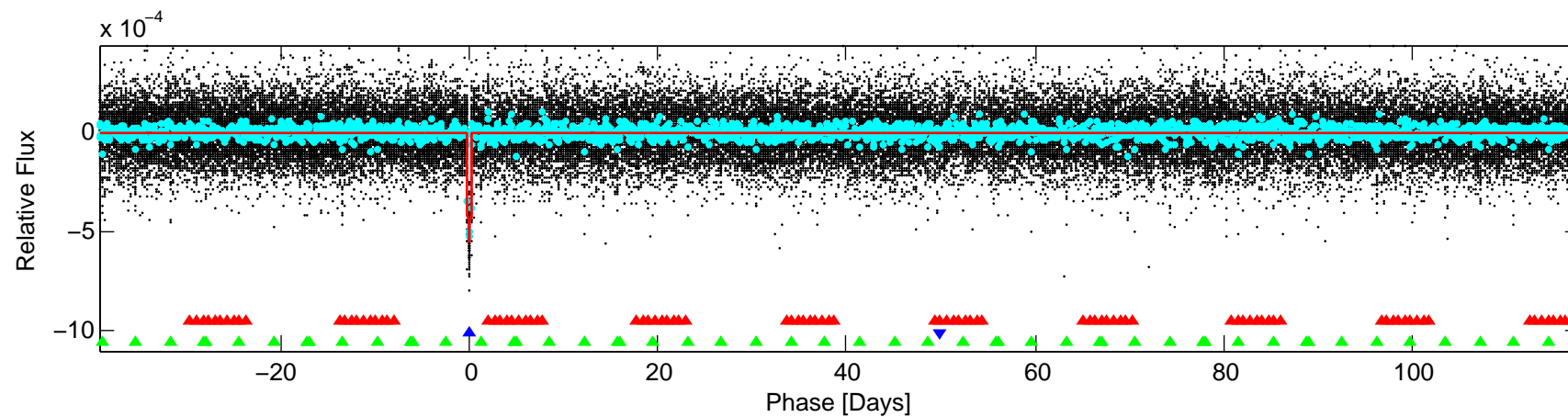
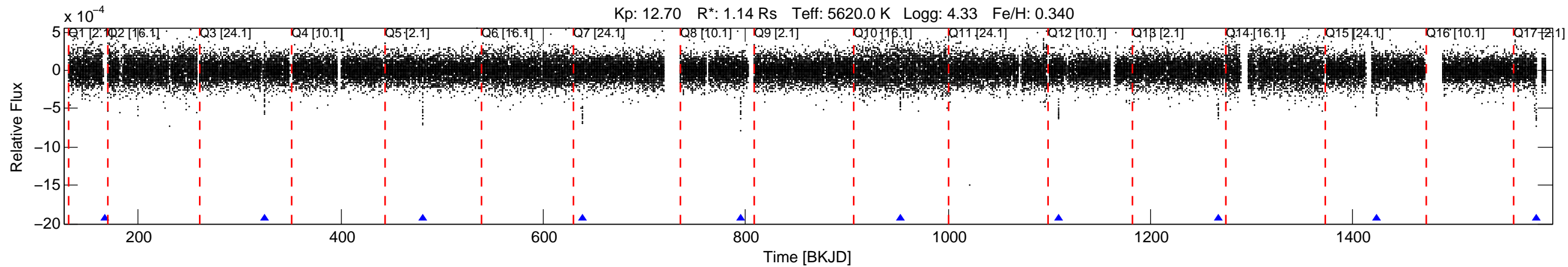


KIC: 8008067 Candidate: 2 of 3 Period: 157.066 d
 KOI: K00316.02 Name: Kepler-139c Corr: 0.992



DV Fit Results:

Period = 157.06553 [0.00060] d
 Epoch = 167.1421 [0.0034] BKJD
 Rp/R* = 0.0233 [0.0030]
 a/R* = 106.47 [54.59]
 b = 0.75 [0.31]
 Seff = 3.54 [0.77]
 Teq = 350 [19] K
 Rp = 2.91 [0.58] Re
 a = 0.5747 [0.0773] AU
 Ag = 1684.75 [668.64] [2.52σ]
 Teffp = 3463 [303] K [10.26σ]

DV Diagnostic Results:

ShortPeriod-sig: 100.0% [359.67σ]
 LongPeriod-sig: N/A
 ModelChiSquare2-sig: 16.7%
 ModelChiSquareGof-sig: 100.0%
 Bootstrap-pfa: 7.63e-160
 RollingBand-fgt: 1.00 [8/8]
 GhostDiagnostic-chr: 5.19
 Centroid-sig: 0.0%
 Centroid-so: 1.388 arcsec [4.13σ]
 OotOffset-rm: 2.459 arcsec [1.87σ]
 KicOffset-rm: 0.132 arcsec [0.77σ]
 OotOffset-st: 1/2/2/3 [8]
 KicOffset-st: 1/2/2/3 [8]
 DiffImageQuality-fgm: 0.88 [7/8]
 DiffImageOverlap-fno: 1.00 [8/8]