

KIC 007984574

Q1-17 DR25 TCE Parameters

TCE	Run Type	KOI?	Period (Days)	Epoch (BKJD)	Depth (ppm)	Duration (Hours)	MES	SNR	R_{\star} (R_{\odot})	T_{\star} (K)	R_p (R_{\oplus})	S_p (S_{\oplus})
007984574-01	OBS	2400.01	11.619157	142.124075	772.1	2.332	16.5	19.1	0.83	5870	3.05	77.50

Robovetter Results

TCE	Run Type	Disp	Score	N	S	C	E	Comments
007984574-01	OBS	PC	1.00	0	0	0	0	NO_COMMENT

Notes: OBS = Observed. INJ = Injected. INV = Inverted. SCR = Scrambled.

N = Not Transit-Like. S = Stellar Eclipse. C = Centroid Offset. E = Ephemeris Match.

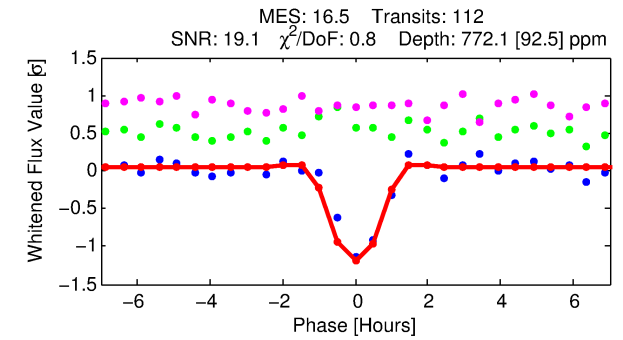
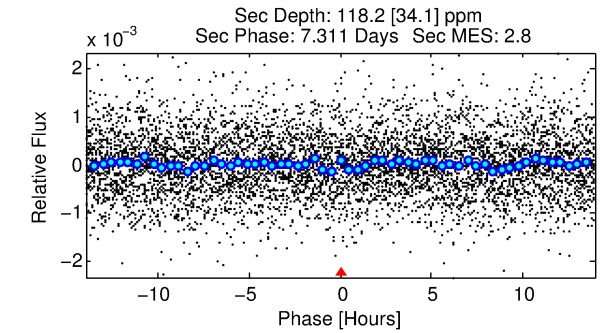
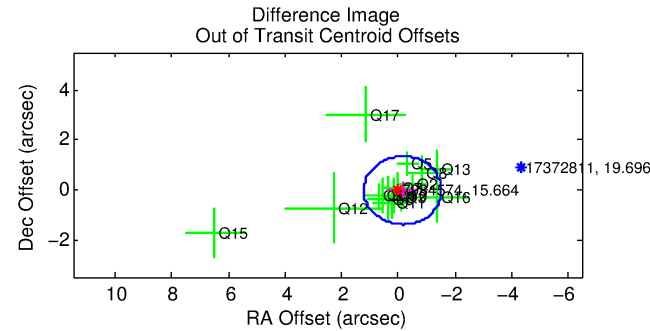
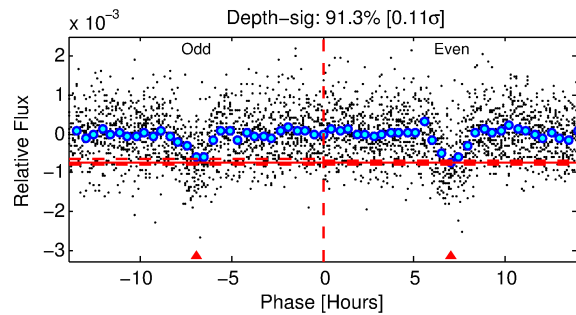
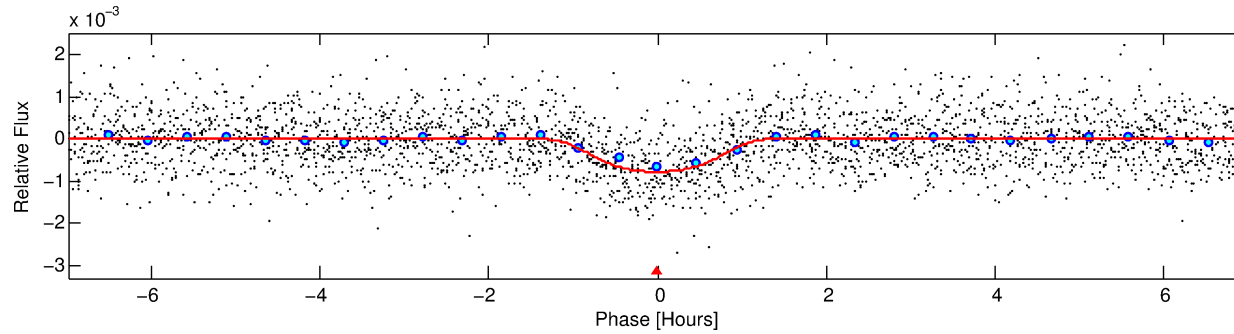
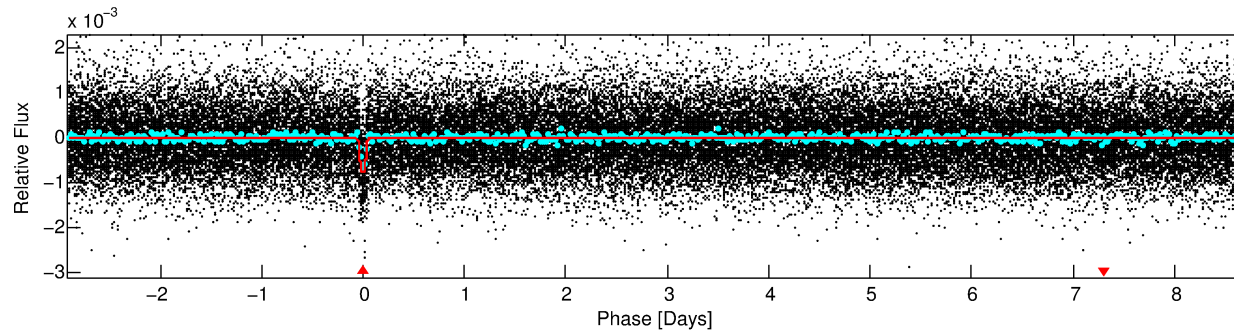
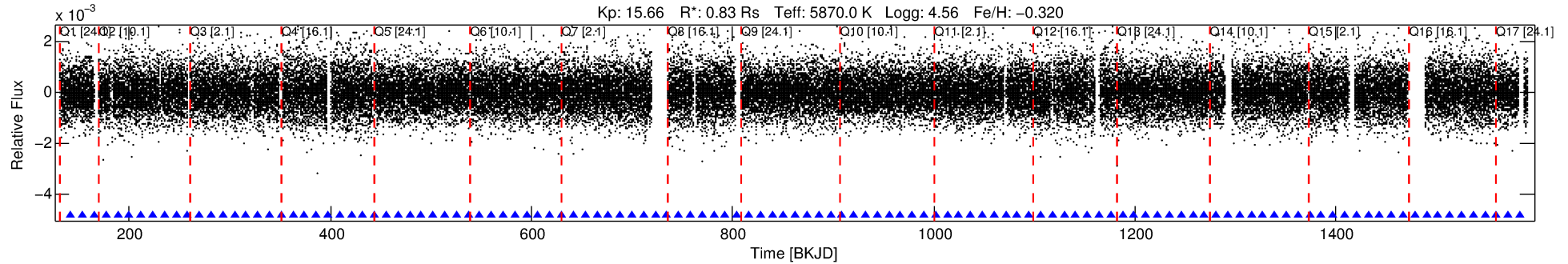
See http://exoplanetarchive.ipac.caltech.edu/docs/API_kepcandidate_columns.html#proj_disp_col for comment definitions.

Ephemeris Match Information For 007984574-01

No Significant Match Found

DV One-Page Summary

KIC: 7984574 Candidate: 1 of 1 Period: 11.619 d
KOI: K02400.01 Corr: 0.902



DV Fit Results:

Period = 11.61916 [0.00004] d
Epoch = 142.1241 [0.0030] BKJD
Rp/R* = 0.0335 [0.0036]
a/R* = 14.01 [2.29]
b = 0.97 [0.02]
Seff = 77.50 [27.97]
Teff = 757 [68] K
Rp = 3.05 [0.93] Re
a = 0.0977 [0.0232] AU
Ag = 66.89 [33.12] [1.99 σ]
Teffp = 3345 [317] K [7.99 σ]

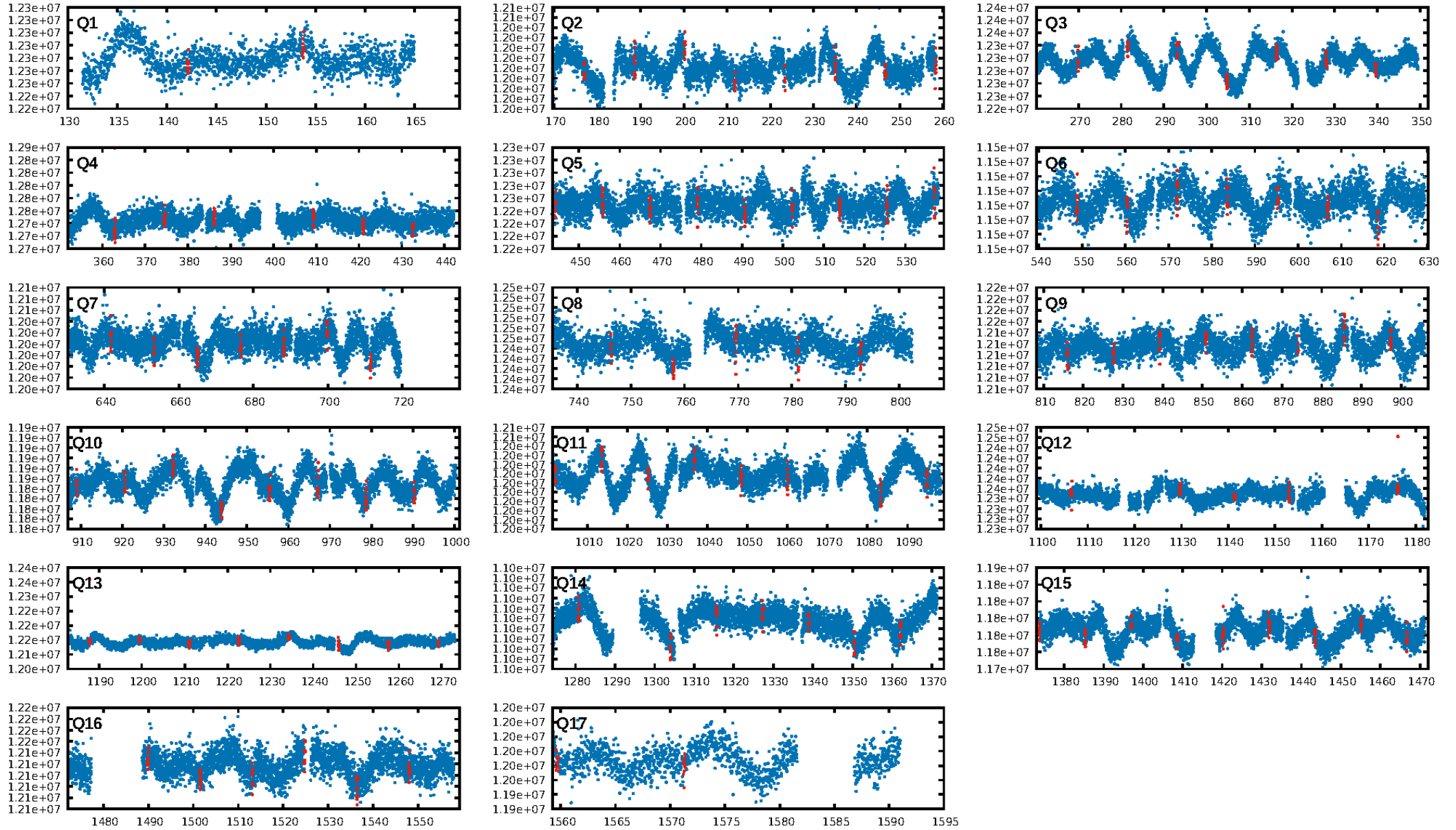
DV Diagnostic Results:

ShortPeriod-sig: N/A
LongPeriod-sig: N/A
ModelChiSquare2-sig: 93.8%
ModelChiSquareGof-sig: 100.0%
Bootstrap-pfa: 1.24e-60
RollingBand-fgt: 1.00 [108/108]
GhostDiagnostic-chr: 2.781
Centroid-sig: 93.1%
Centroid-so: 0.247 arcsec [0.38 σ]
OotOffset-rm: 0.157 arcsec [0.34 σ]
KicOffset-rm: 0.189 arcsec [0.50 σ]
OotOffset-st: 4/4/3/4 [15]
KicOffset-st: 4/4/3/4 [15]
DiffImageQuality-fgm: 0.73 [11/15]
DiffImageOverlap-fno: 1.00 [17/17]

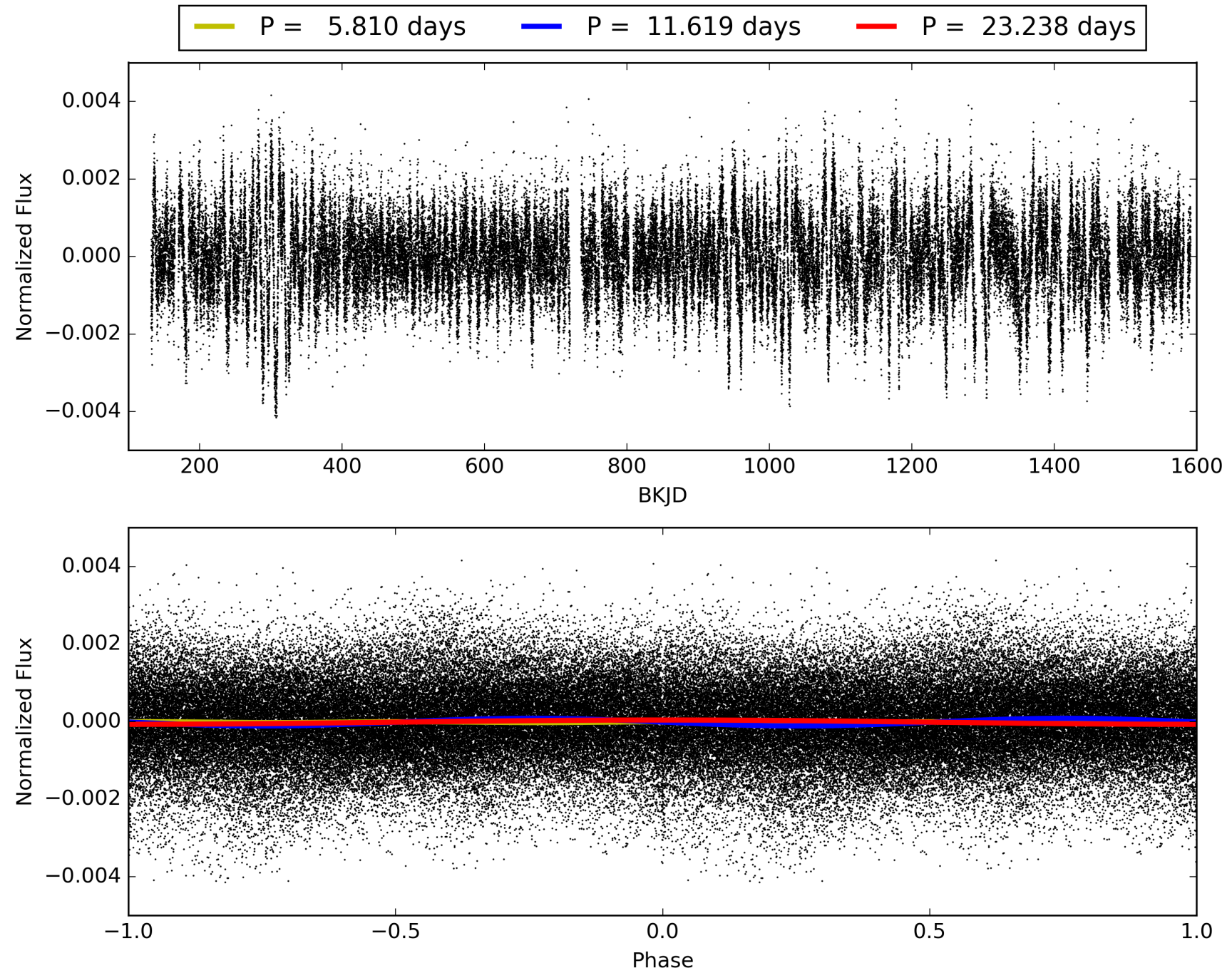
Software Revision: svn+ssh://murzim/repo/soc/tags/release/9.3.42@60958 -- Date Generated: 30-Jan-2016 16:19:42 Z

This Data Validation Report Summary was produced in the Kepler Science Operations Center Pipeline at NASA Ames Research Center

TCE 007984574-01, PDC Light Curves

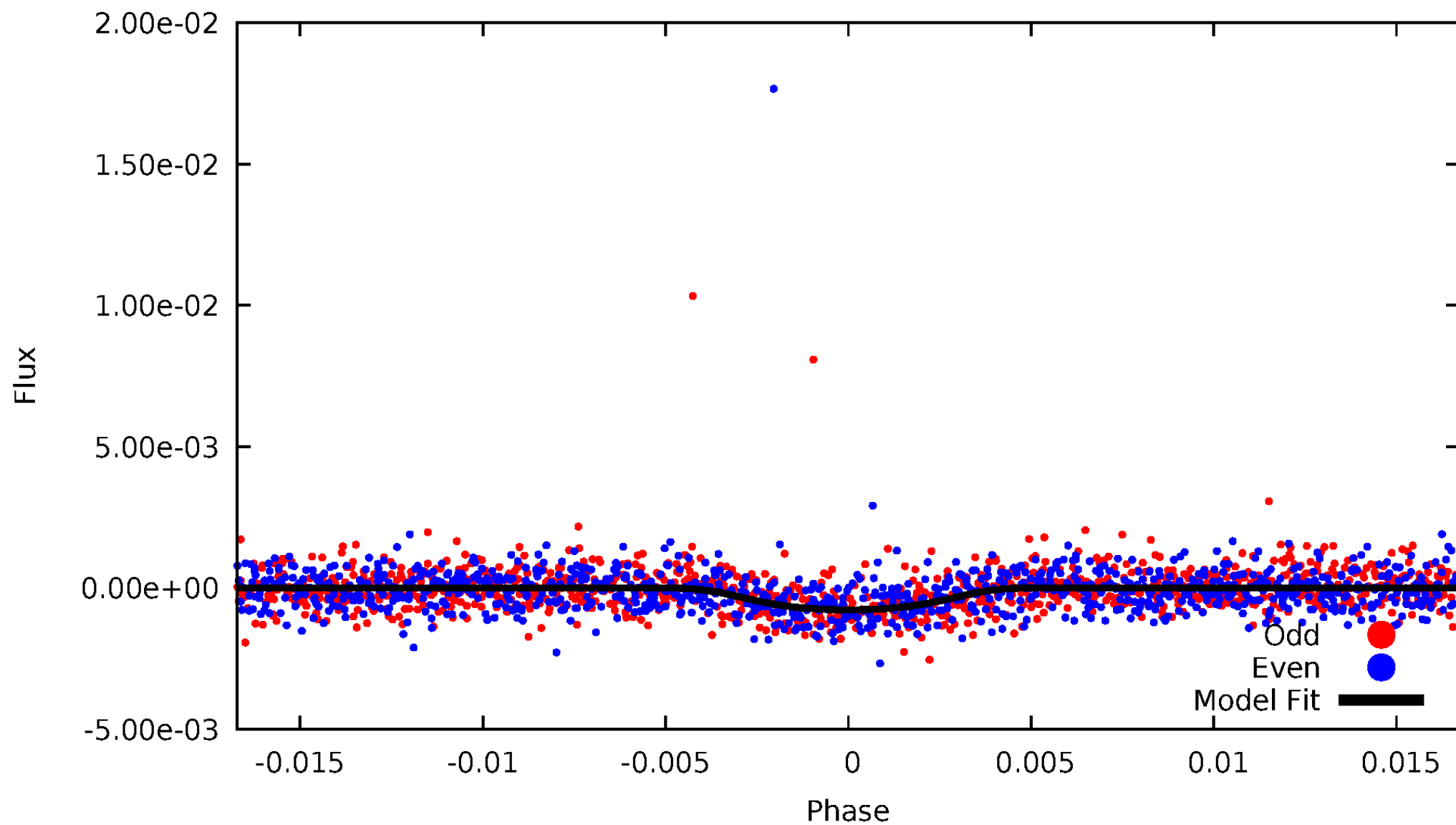


TCE 007984574-01



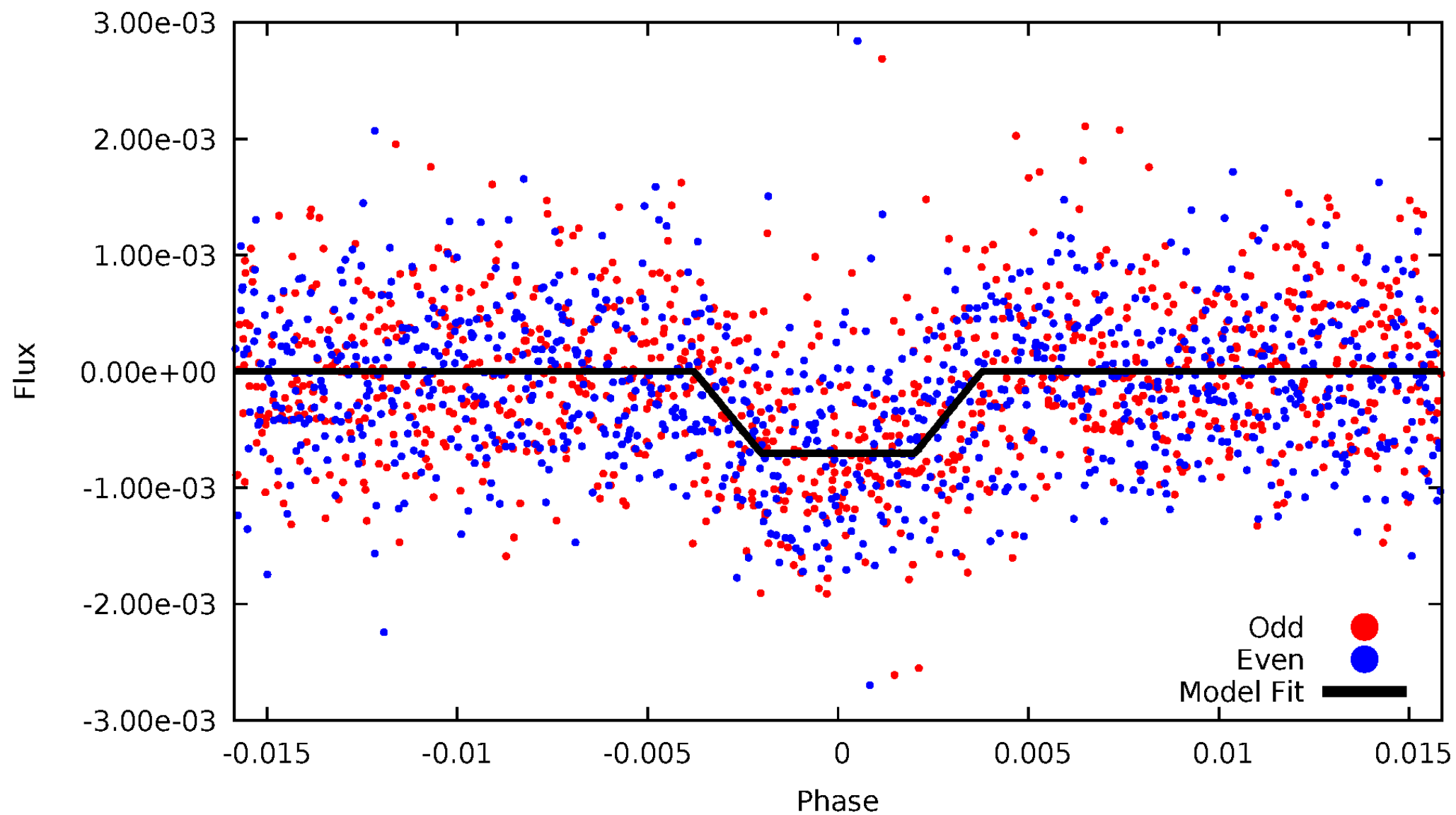
DV Odd/Even

TCE 007984574-01



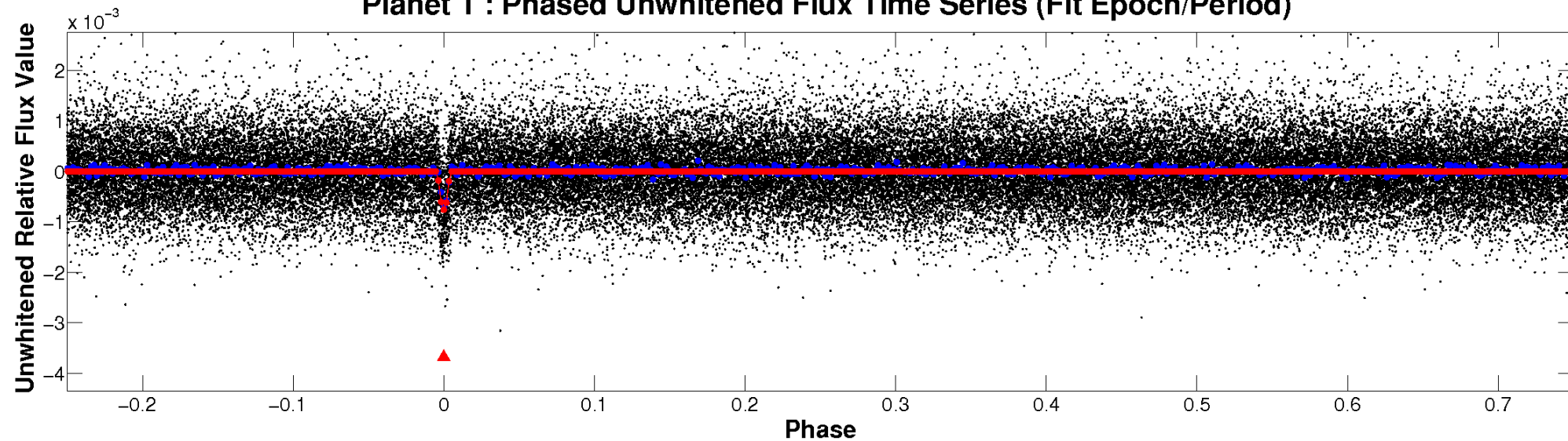
ALT Odd/Even

TCE 007984574-01

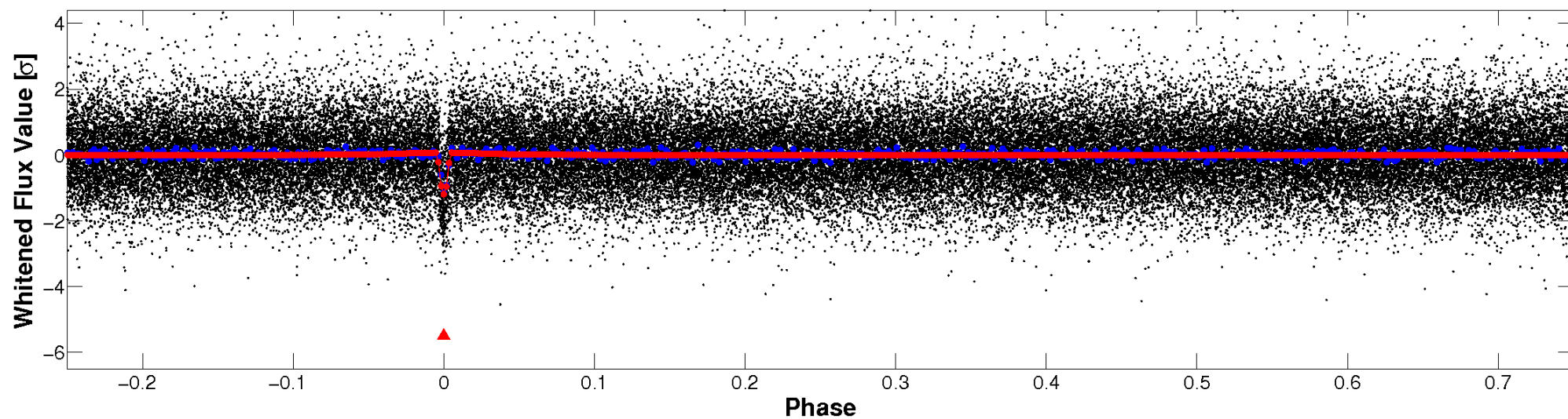


Non-Whitened Vs. Whitened Light Curve

Planet 1 : Phased Unwhitened Flux Time Series (Fit Epoch/Period)

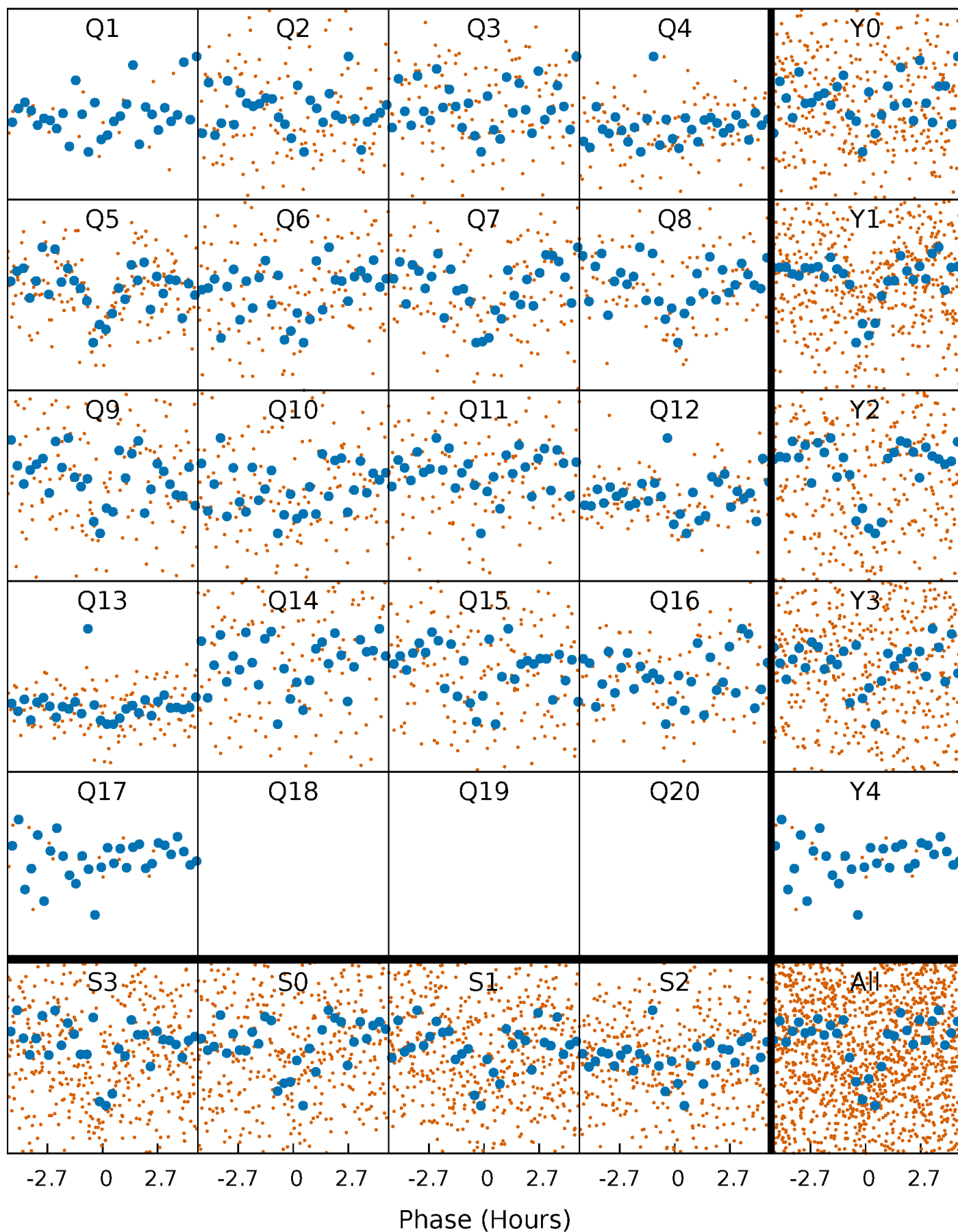


Planet 1 : Phased Whitened Flux Time Series (Fit Epoch/Period)



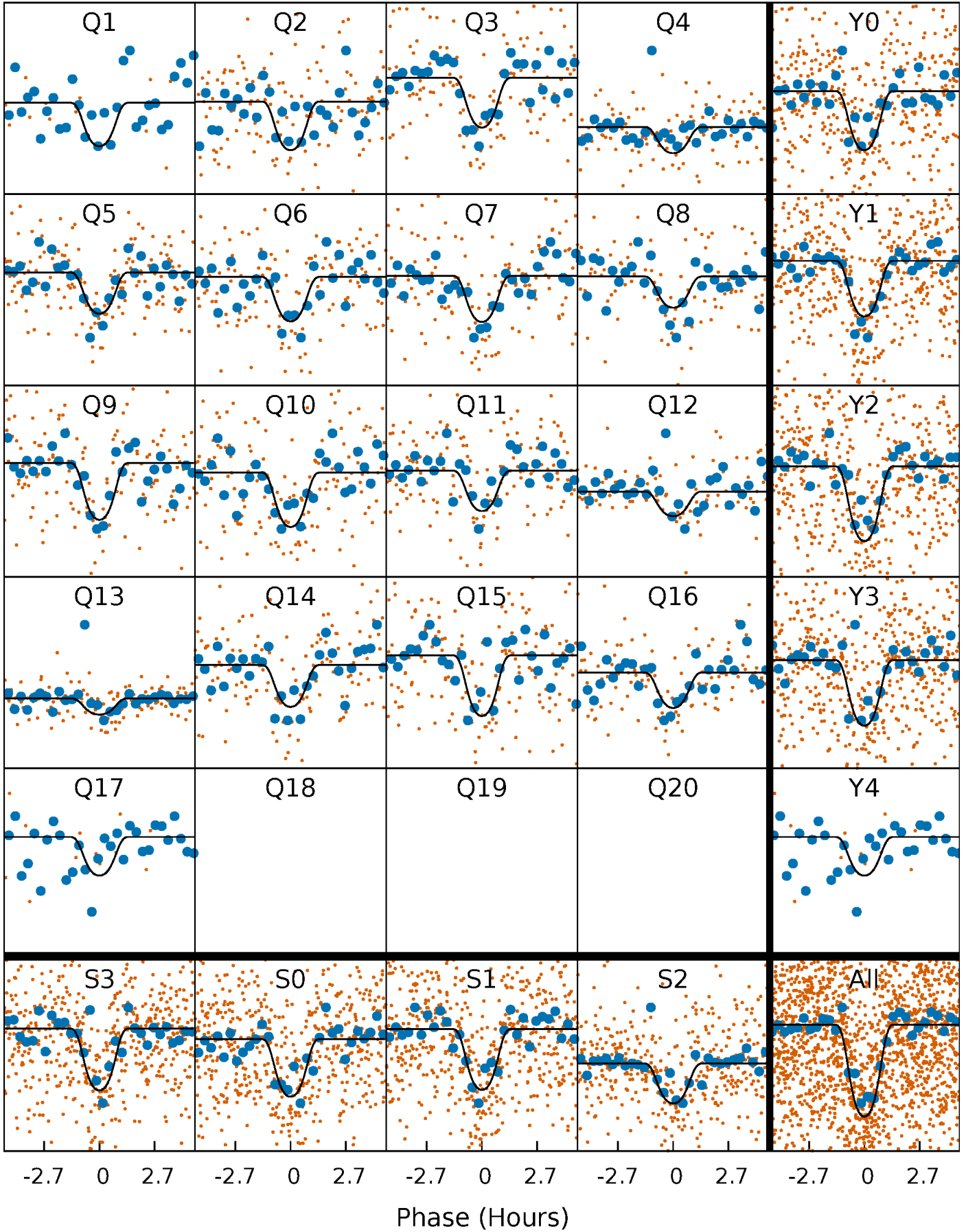
PDC Quarter-Phased Transit Curves

TCE 007984574-01 P= 11.619157 Days $T_0=142.124075$ (BKJD)



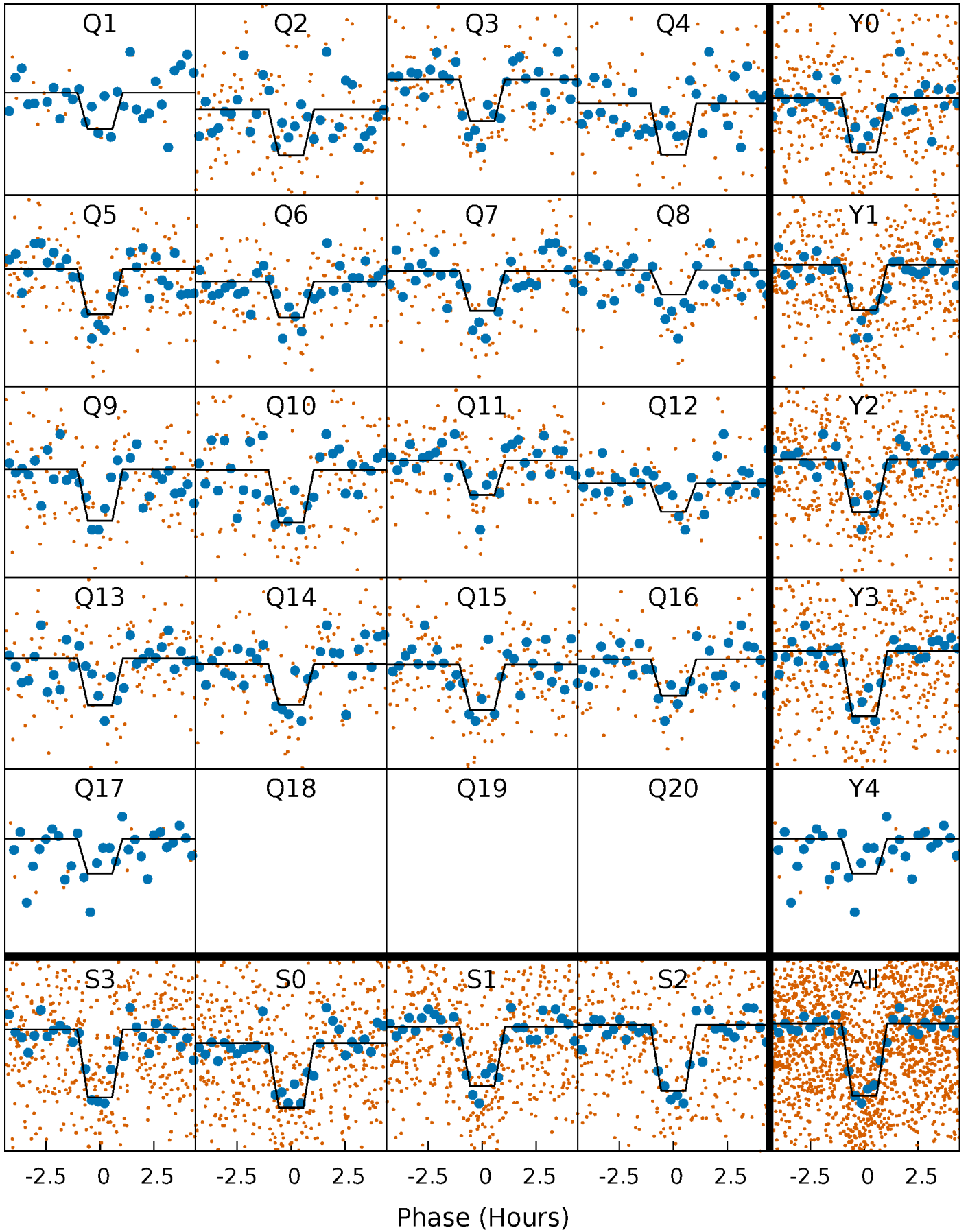
DV Quarter-Phased Transit Curves

TCE 007984574-01 P= 11.619157 Days $T_0=142.124075$ (BKJD)



Alt. Detrend Quarter-Phased Transit Curves

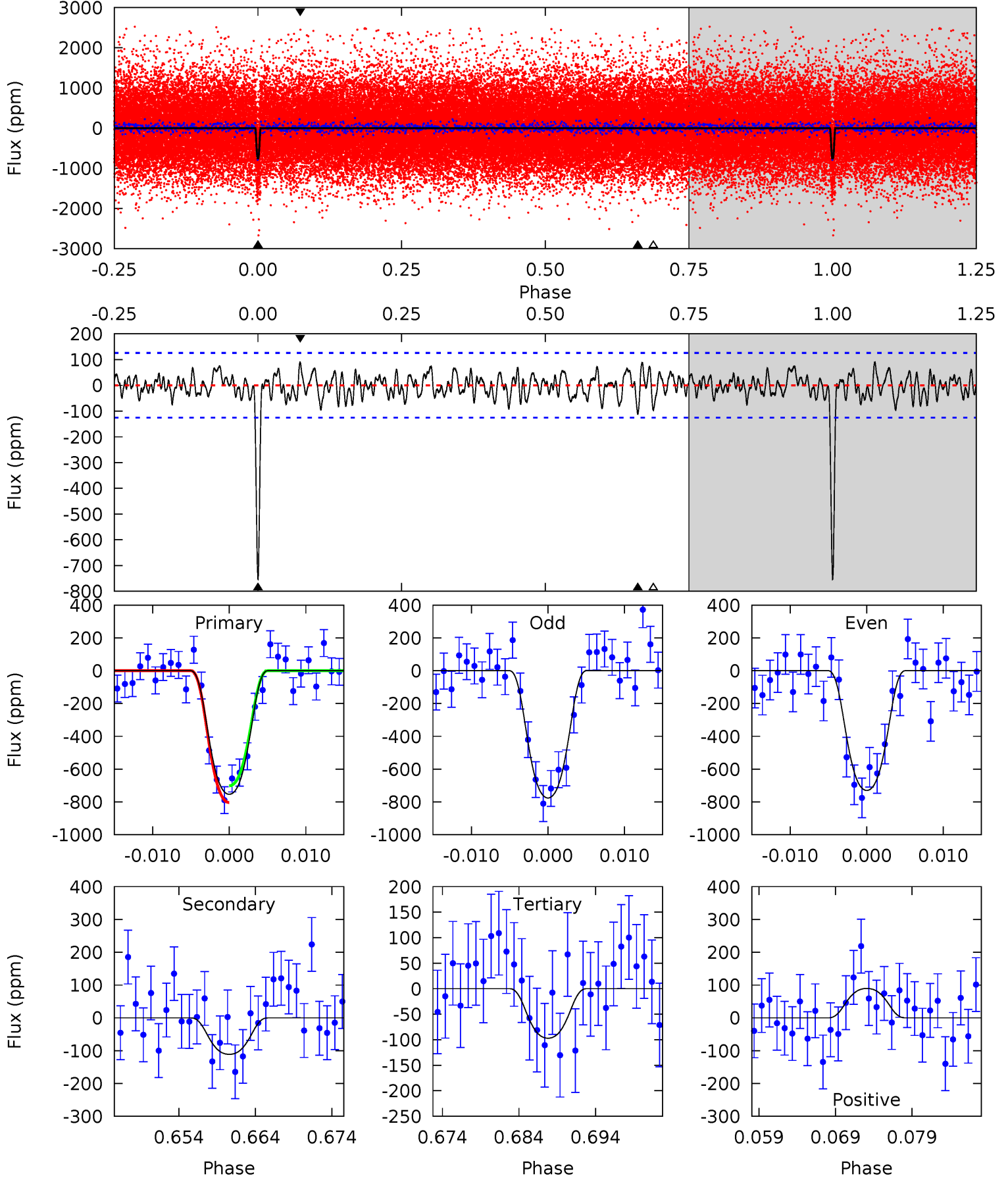
TCE 007984574-01 P= 11.619182 Days $T_0=142.123071$ (BKJD)



DV Model-Shift Uniqueness Test

007984574-01, $P = 11.619157$ Days, $E = 130.504918$ Days

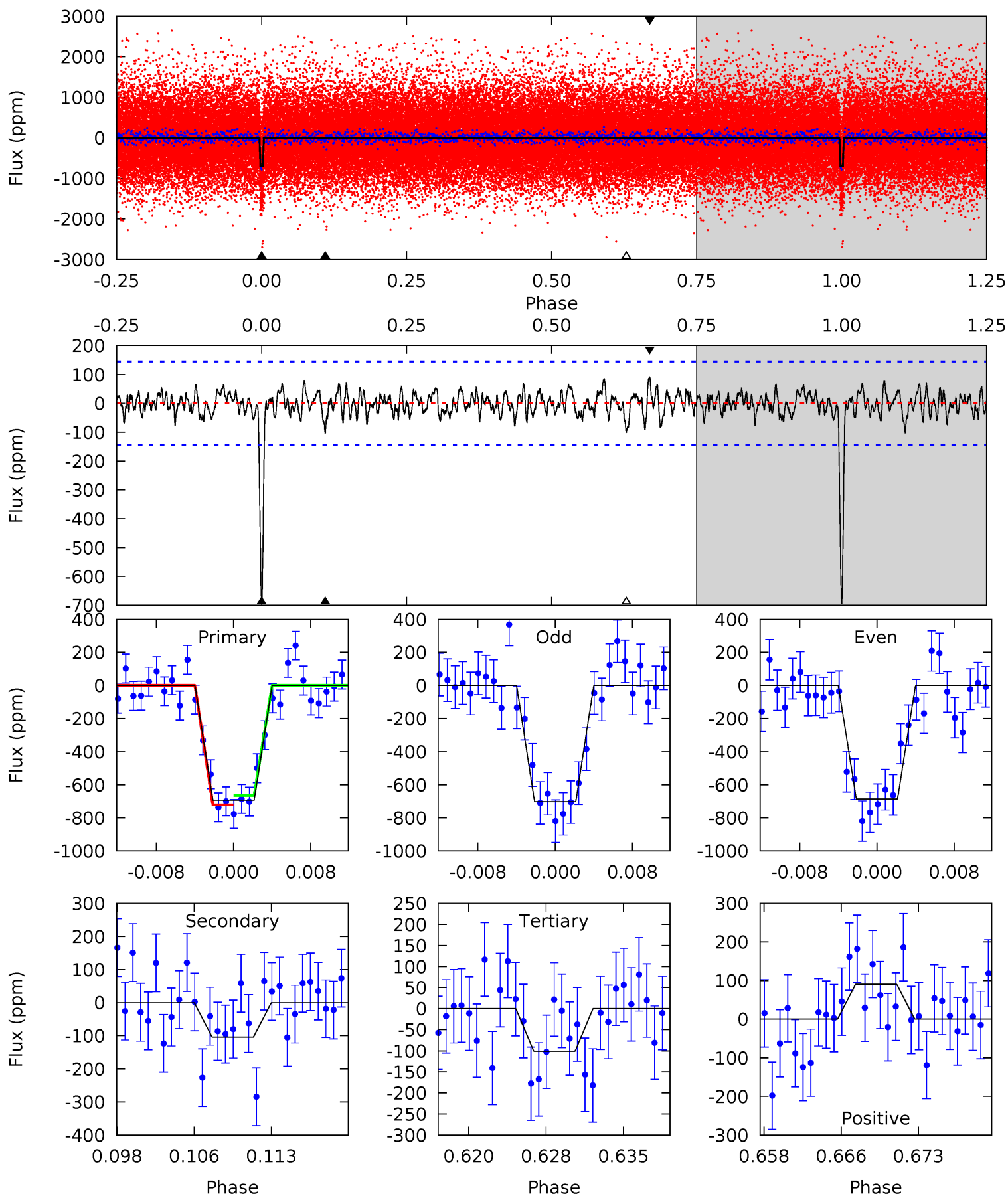
Pri	Sec	Ter	Pos	FA ₁	FA ₂	F _{Red}	Pri-Ter	Pri-Pos	Sec-Ter	Sec-Pos	Odd-Evn	DMM	Shape	TAT
30.2	4.45	3.88	3.59	5.03	2.58	1.43	26.3	26.6	0.57	0.86	0.92	0.89	0.11	2.05



Alt Model-Shift Uniqueness Test

007984574-01, P = 11.619182 Days, E = 130.503889 Days

Pri	Sec	Ter	Pos	FA ₁	FA ₂	F _{Red}	Pri-Ter	Pri-Pos	Sec-Ter	Sec-Pos	Odd-Evn	DMM	Shape	TAT
24.4	3.67	3.55	3.17	5.08	2.67	1.13	20.9	21.2	0.11	0.49	0.29	1.02	0.12	1.00



Stellar Parameters For KIC 007984574

	$T_{\text{eff}}(K)$	$\log(g)$	[Fe/H]	R (R_{\odot})	M (M_{\odot})	p_{\star} ($\text{g}\cdot\text{cm}^{-3}$)
	5870^{+158}_{-175}	$4.560^{+0.035}_{-0.184}$	$-0.320^{+0.300}_{-0.300}$	$0.834^{+0.238}_{-0.074}$	$0.920^{+0.097}_{-0.108}$	$2.237^{+0.411}_{-1.094}$
	+3%/-3%	+1%/-4%	+94%/-94%	+29%/-9%	+11%/-12%	+18%/-49%
Source	PHO1	KIC0	KIC0	DSEP		

KIC = Kepler Input Catalog; PHO = Photometry; SPE = Spectroscopy; AST = Asteroseismology
 TRA = Transits; DESP = Dartmouth Models; MULT = Multiple Models

Secondary Eclipse Parameters for KIC 007984574-01 / KOI 2400.01

Detrend	Depth (ppm)	R_p (R_{\oplus})	T_{max} (K)	T_{obs} (K)	A_{obs}
DV	-111 ± 25	$3.16^{+0.54}_{-0.41}$	1081^{+69}_{-48}	3701^{+216}_{-217}	56^{+22}_{-19}
Alt.	-104 ± 28	$2.50^{+0.47}_{-0.39}$	1079^{+71}_{-45}	3967^{+274}_{-289}	84^{+45}_{-32}

T_{max} = Theoretical Maximum Planetary Temperature

T_{obs} = Observed Planetary Temperature (Assuming $A=0.3$)

A_{obs} = Observed Albedo (Assuming $T=0$)

If a secondary eclipse is present, the system is likely an EB if $T_{obs} \gg T_{max}$ AND $A_{obs} \gg 1.0$

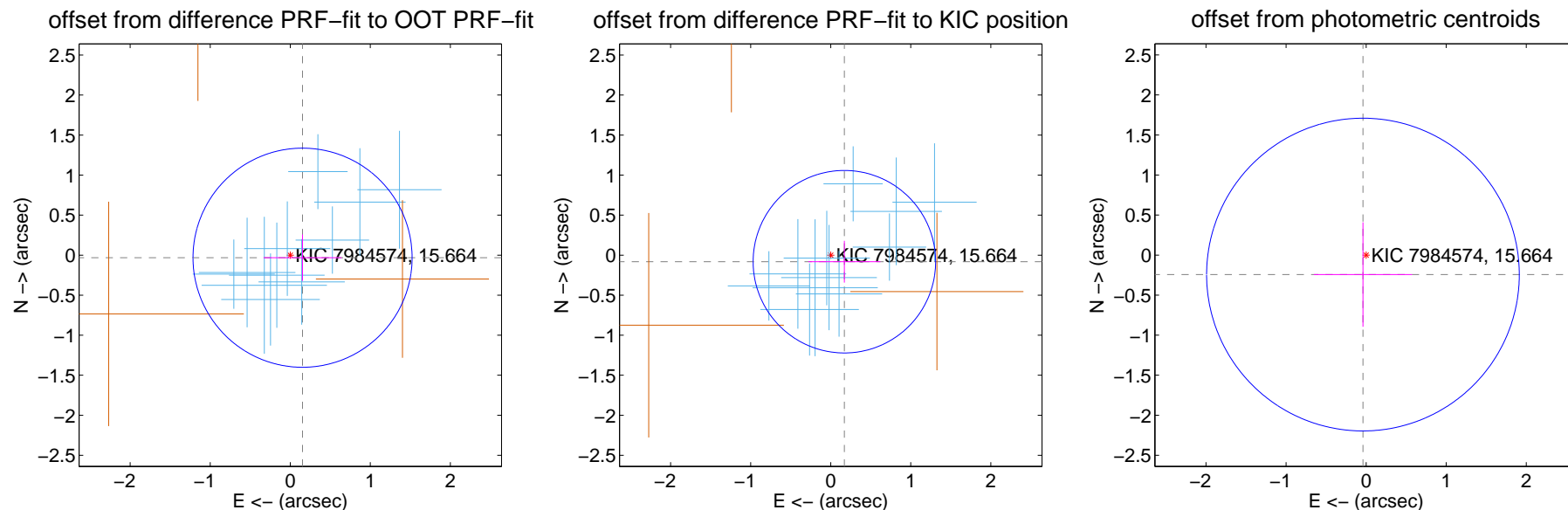
DV Centroid Data

Supplemental centroid analysis for 007984574-01. Kepler magnitude: 15.66. Transit SNR 19.12

There are 11 quarters with good PRF difference image offsets

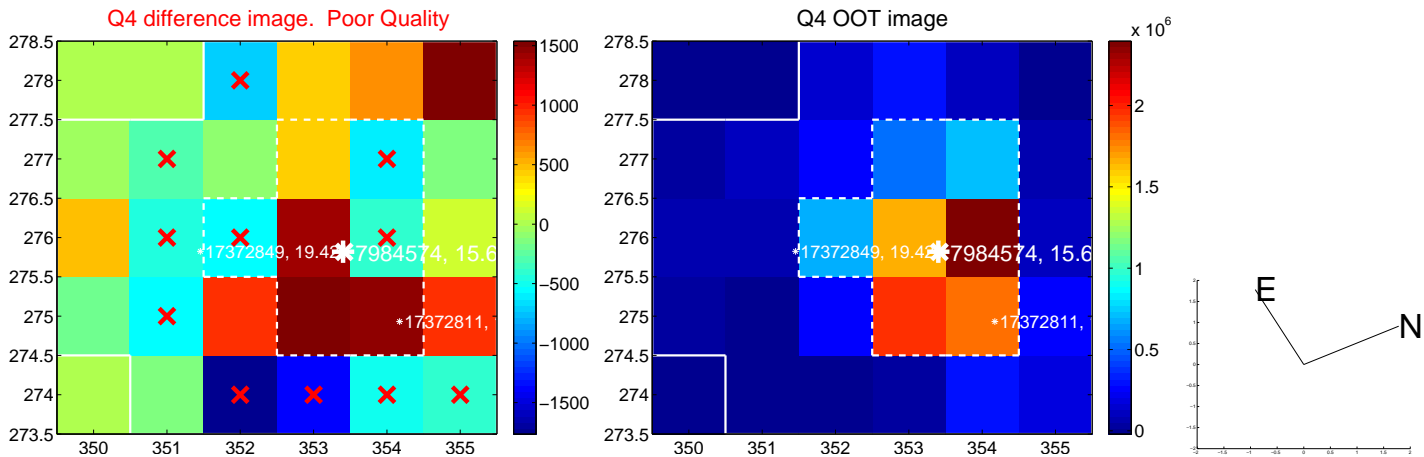
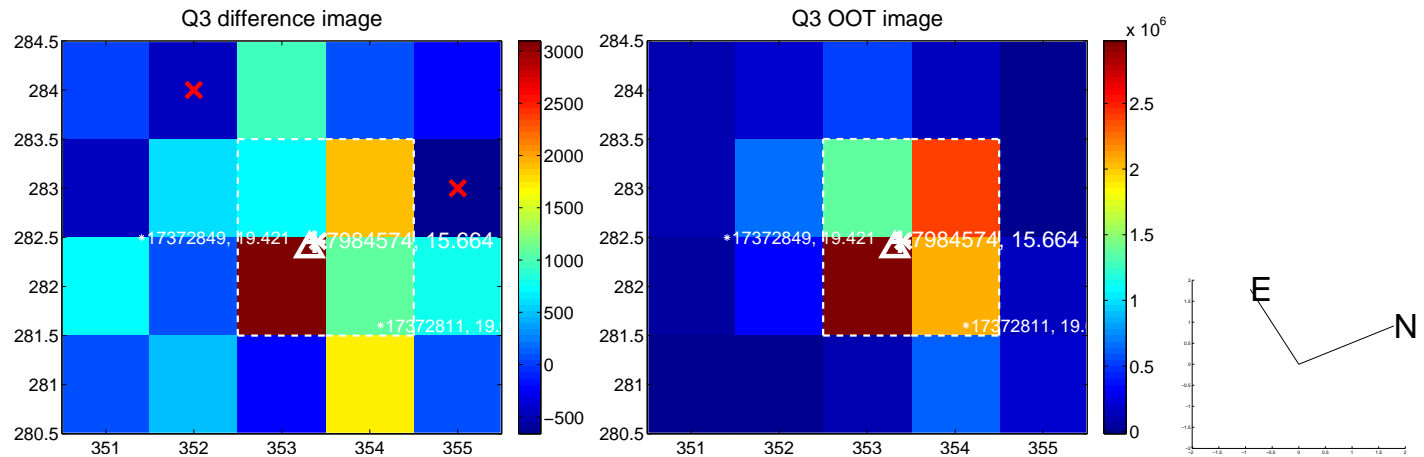
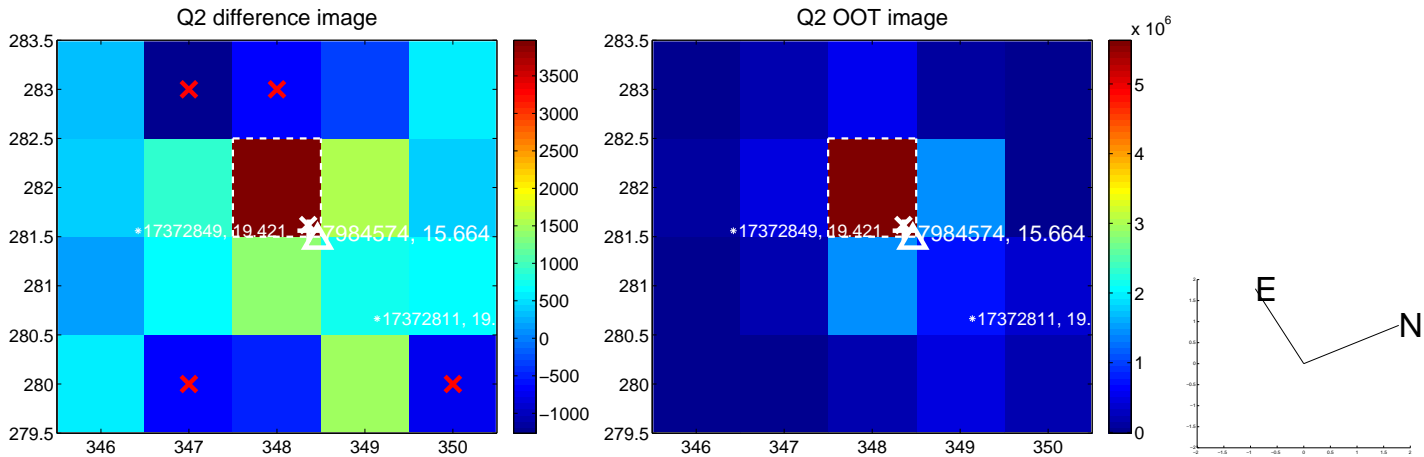
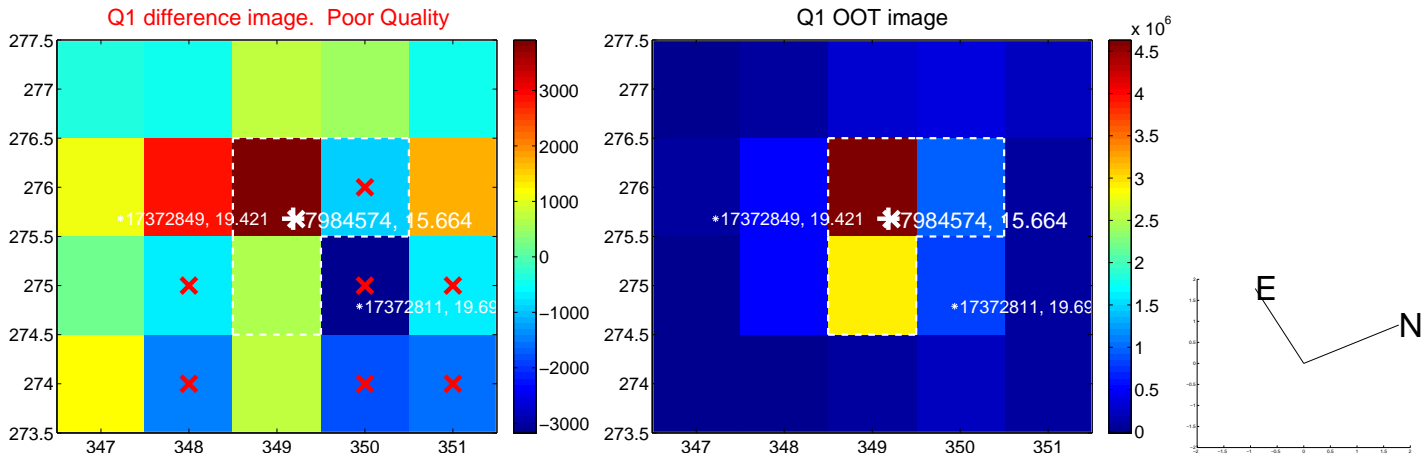
The direct PRF centroid is offset from the target star catalog position by about 0.17 arcsec

	Distance in arcsec	Distance / σ	Δ RA	Δ Dec
PRF-fit source offset from OOT	0.157 ± 0.456	0.34	-0.153 ± 0.488	-0.032 ± 0.290
PRF-fit source offset from KIC position	0.189 ± 0.380	0.50	-0.171 ± 0.450	-0.082 ± 0.261
photometric centroid source offset	0.25 ± 0.65	0.38	0.04 ± 0.61	-0.24 ± 0.65

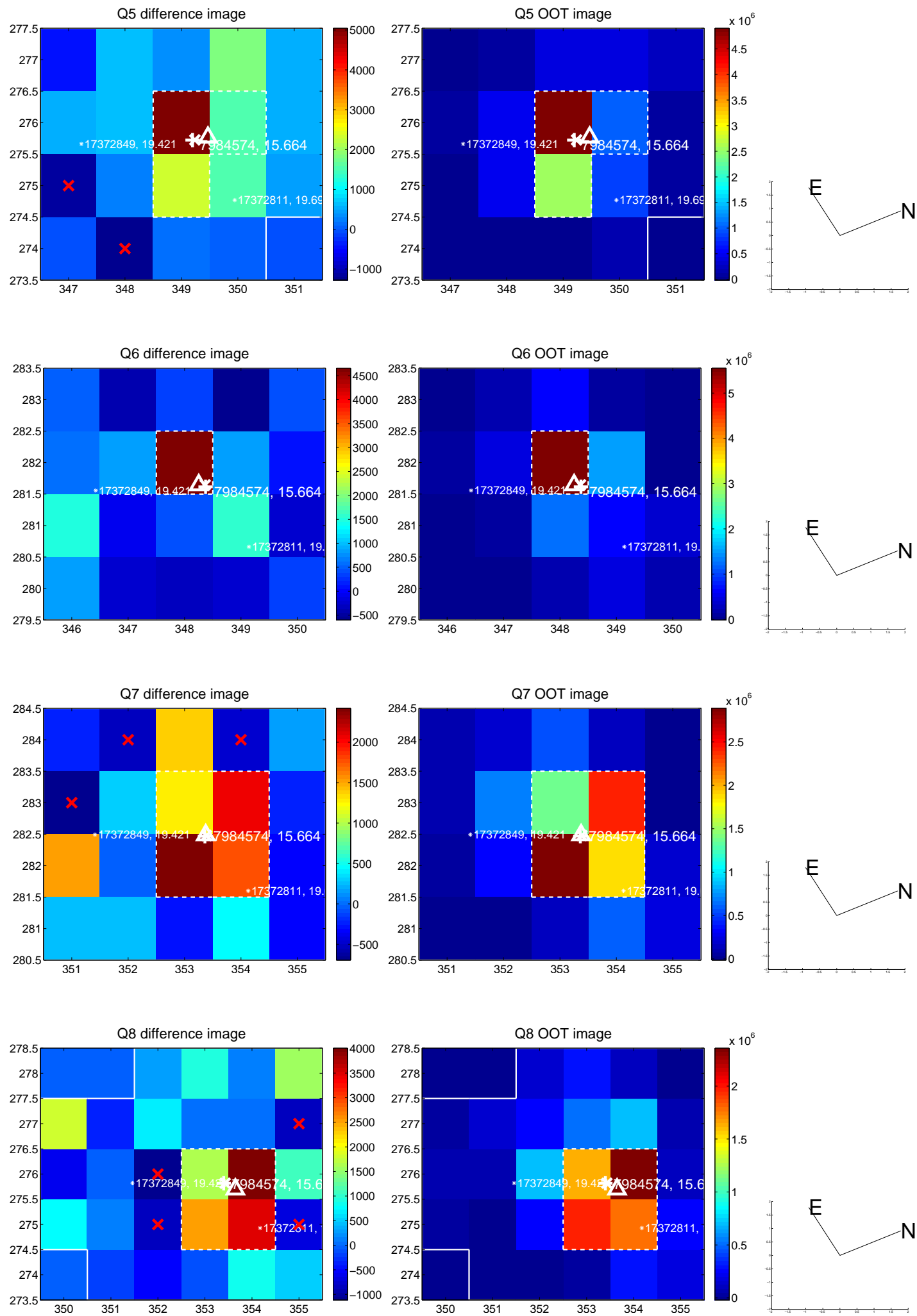


Centroid source offsets from the target star reconstructed from PRF and photometric centroids. **Sky blue crosses:** good quarterly centroid offsets; **Vermillion crosses:** bad quarterly centroid offsets; magenta cross: average over quarters. Length of the crosses: one- σ uncertainty. Blue circle: three- σ . Red *: target star. Blue *: Other stars. Text next to a star gives its KIC ID and kepmag. KIC IDs > 15,000,000 are from the UKIRT catalog.

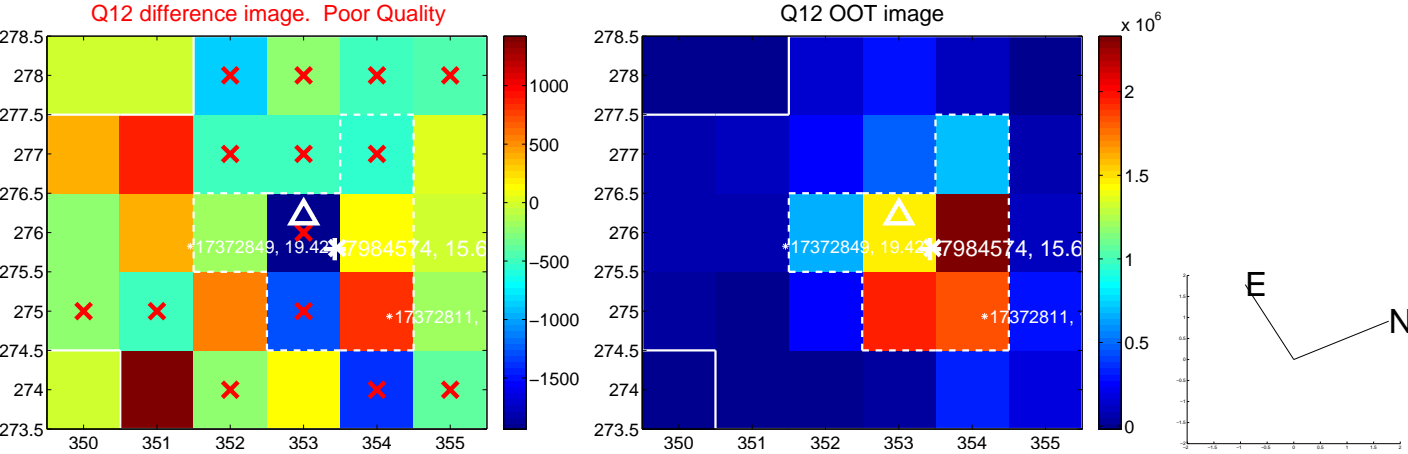
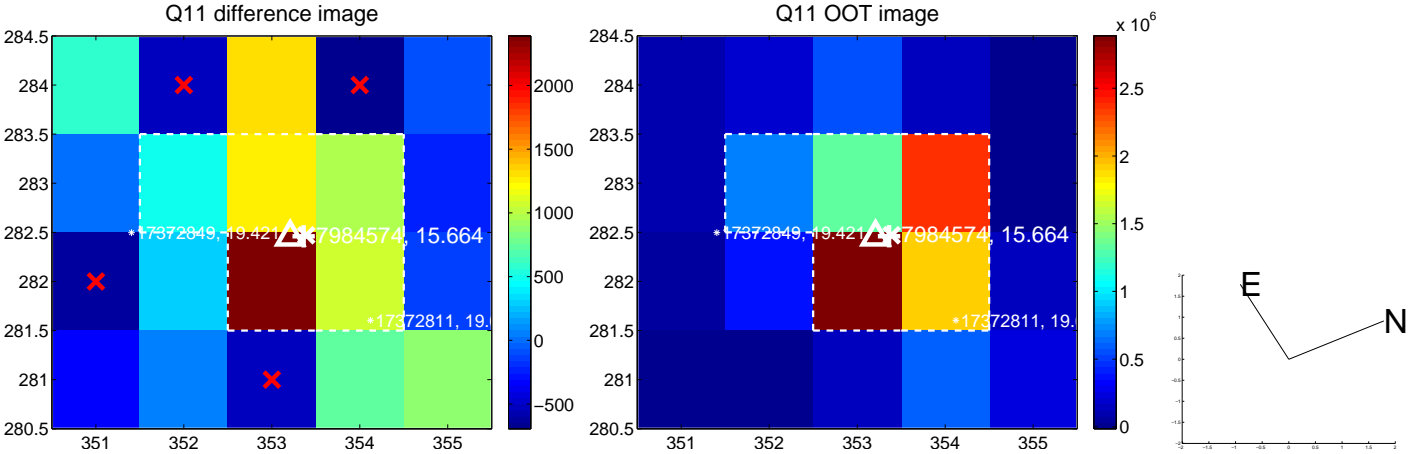
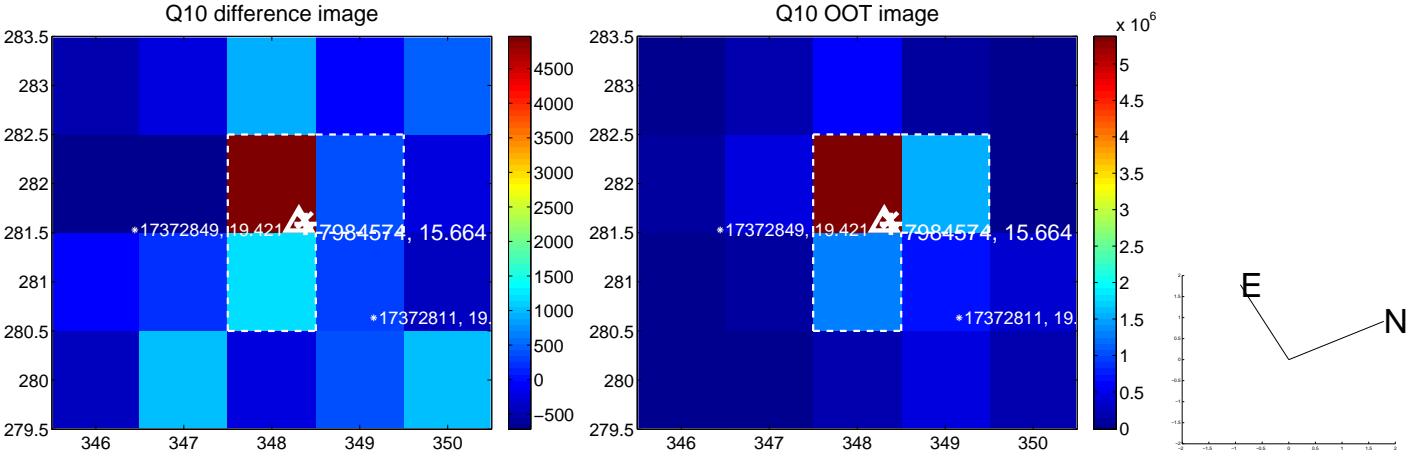
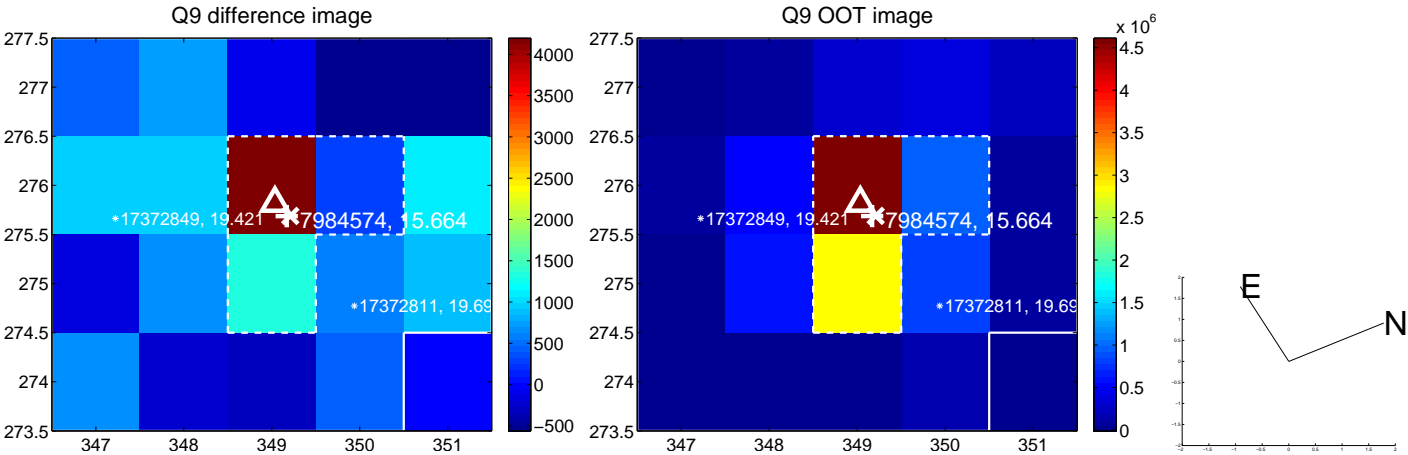
white \times : KIC target position; $+$: OOT centroid; \triangle : difference centroid. red \times : large negative pixel value.



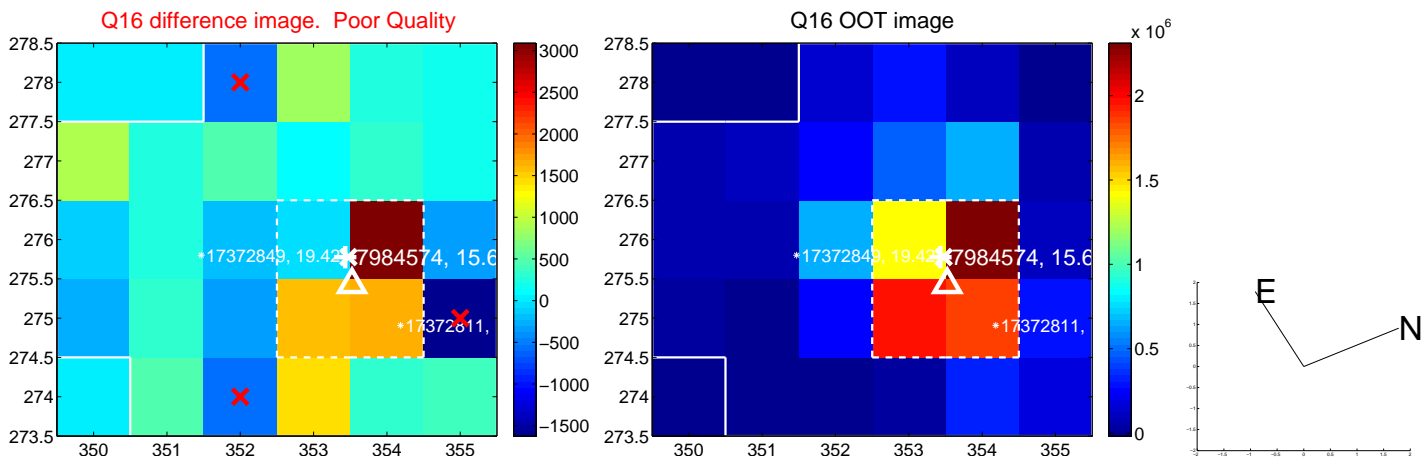
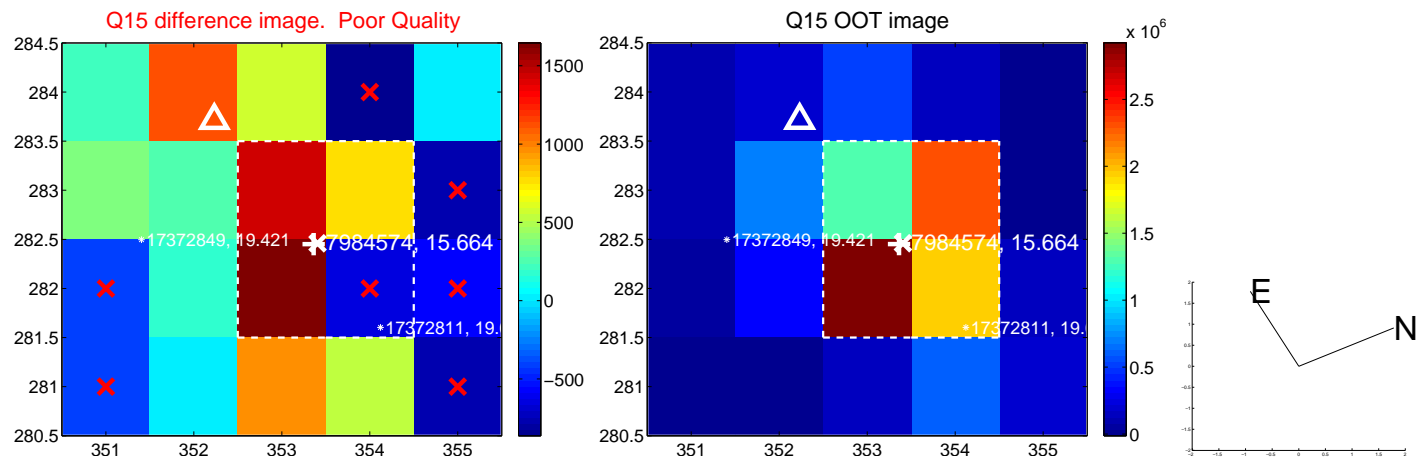
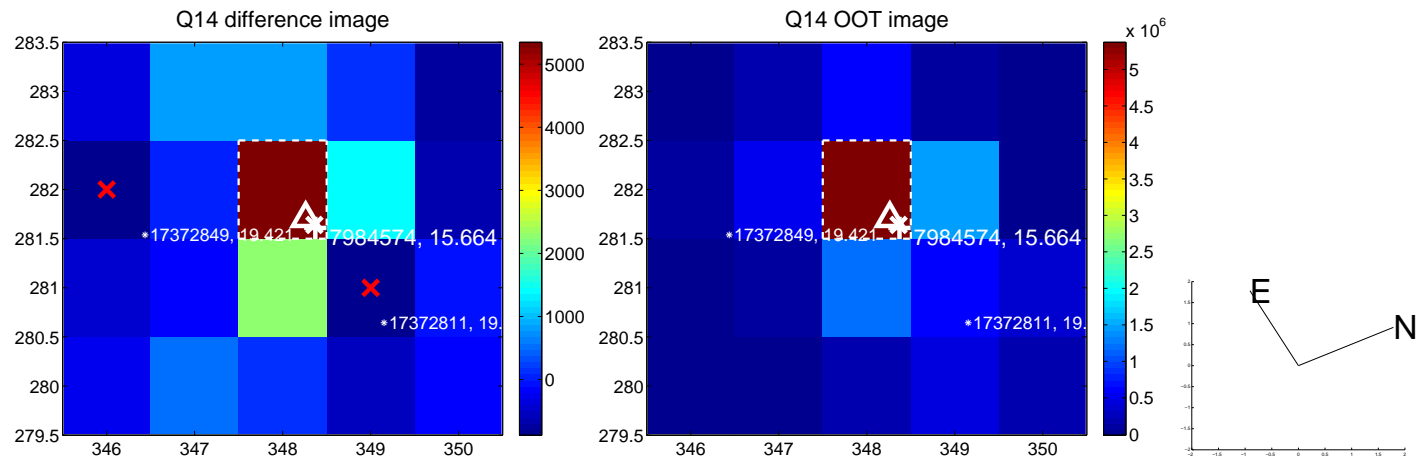
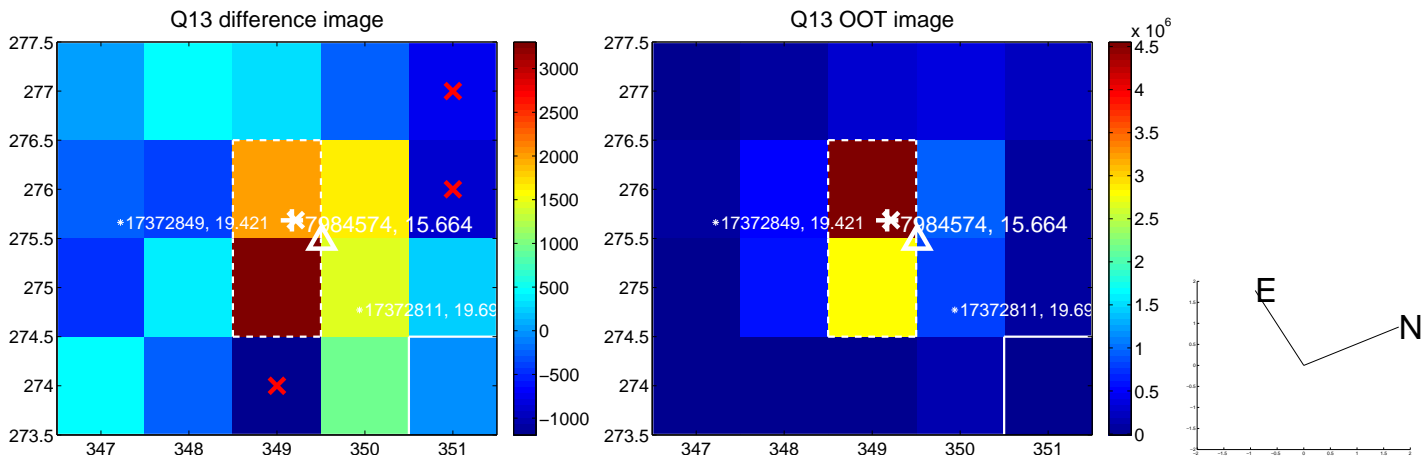
white \times : KIC target position; +: OOT centroid; \triangle : difference centroid. red \times : large negative pixel value.



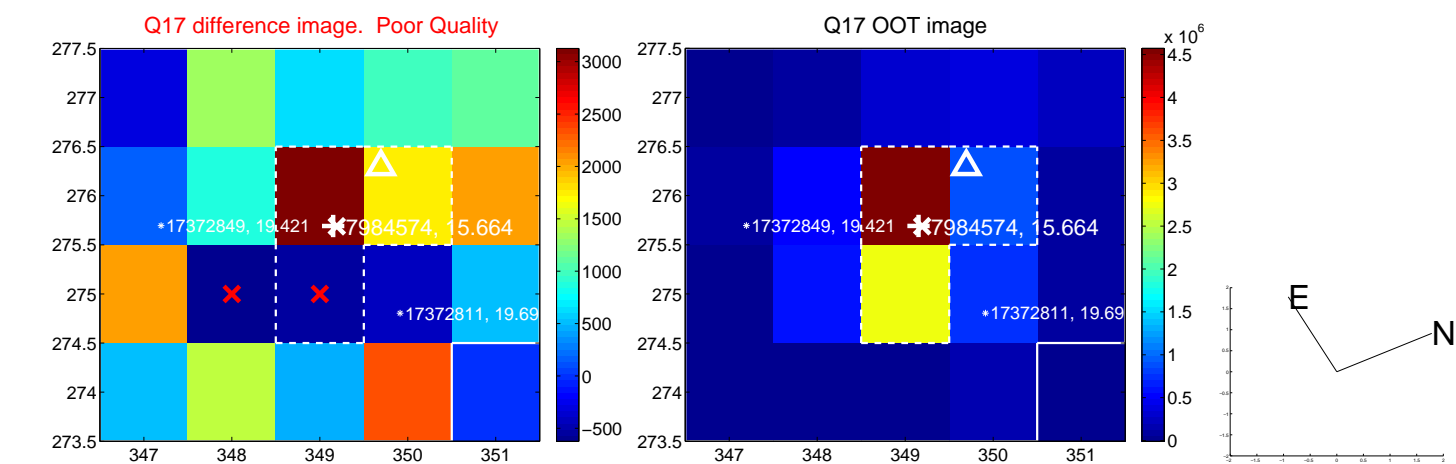
white \times : KIC target position; $+$: OOT centroid; \triangle : difference centroid. red \times : large negative pixel value.



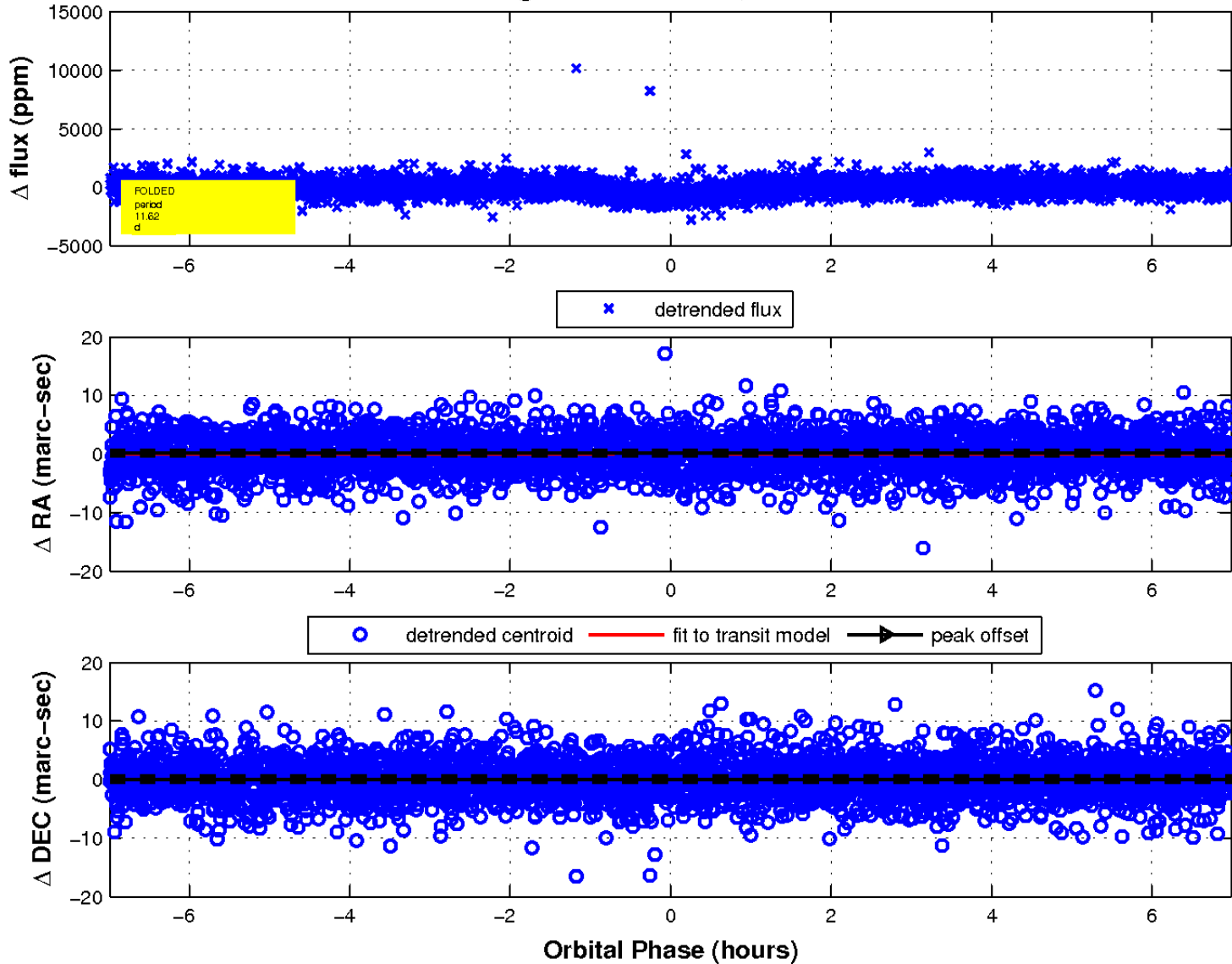
white \times : KIC target position; +: OOT centroid; \triangle : difference centroid. red \times : large negative pixel value.



white \times : KIC target position; $+$: OOT centroid; \triangle : difference centroid. red \times : large negative pixel value.



fluxWeightedCentroids, Planet 1 of 1



UKIRT Image

Declination

