

KIC 007954476

Q1-17 DR25 TCE Parameters

TCE	Run Type	KOI?	Period (Days)	Epoch (BKJD)	Depth (ppm)	Duration (Hours)	MES	SNR	R_{\star} (R_{\odot})	T_{\star} (K)	R_p (R_{\oplus})	S_p (S_{\oplus})
007954476-01	OBS	No	291.594888	357.271818	197.2	7.589	8.3	7.9	0.73	5548	1.14	0.71

Robovetter Results

TCE	Run Type	Disp	Score	N	S	C	E	Comments
007954476-01	OBS	FP	0.00	1	0	0	0	INDIV_TRANS_CHASES_MARSHALL—INCONSISTENT_TRANS—CENT_FEW_DIFFS

Notes: OBS = Observed. INJ = Injected. INV = Inverted. SCR = Scrambled.

N = Not Transit-Like. S = Stellar Eclipse. C = Centroid Offset. E = Ephemeris Match.

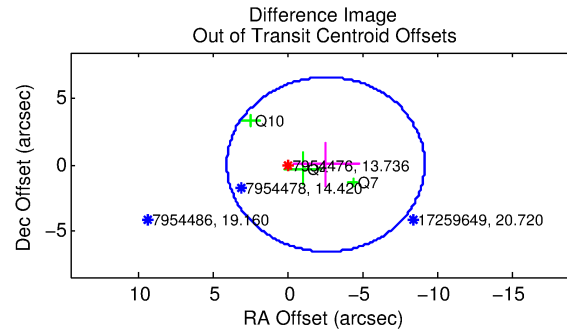
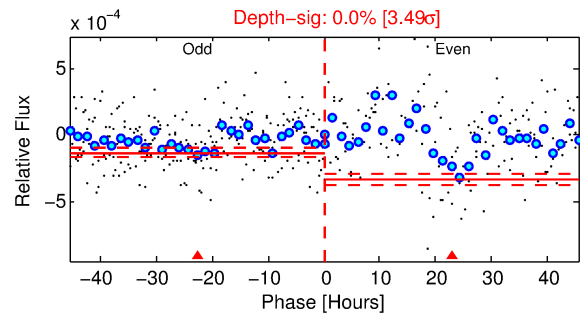
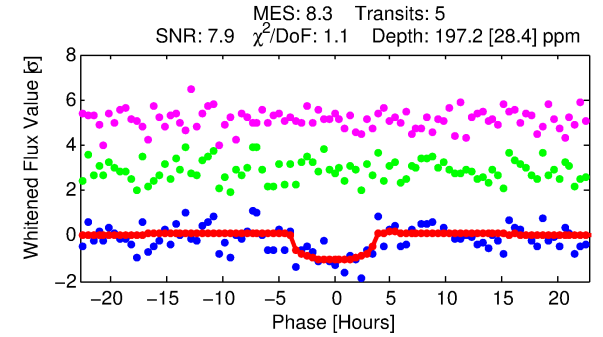
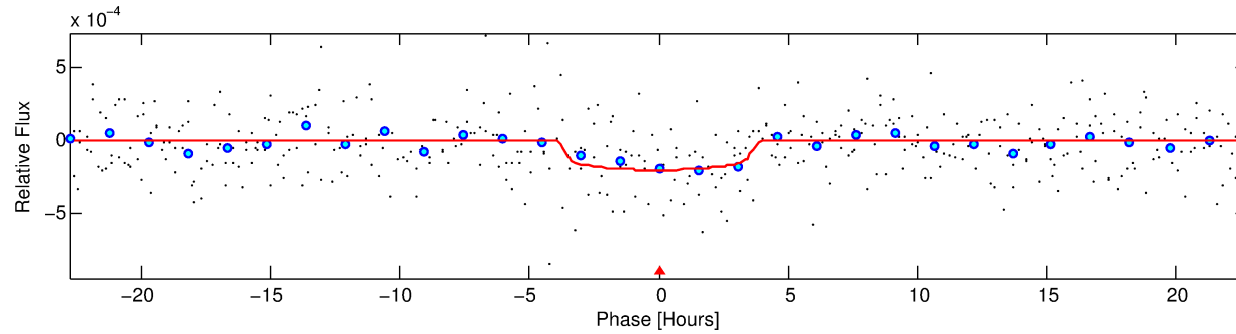
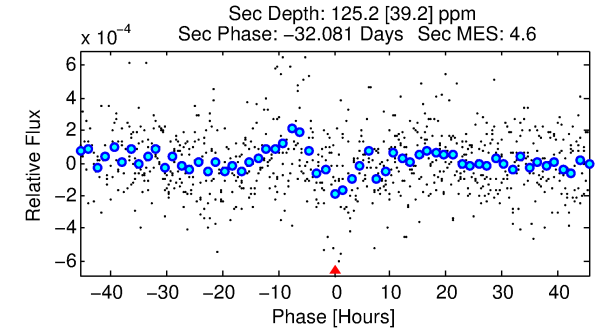
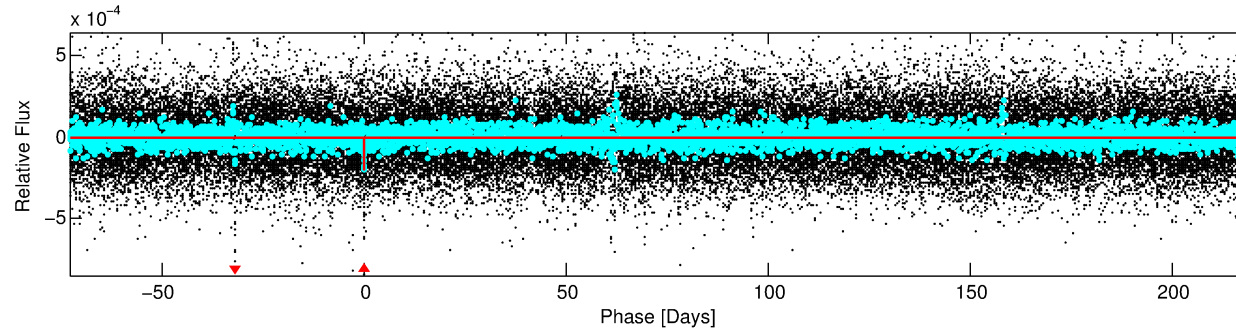
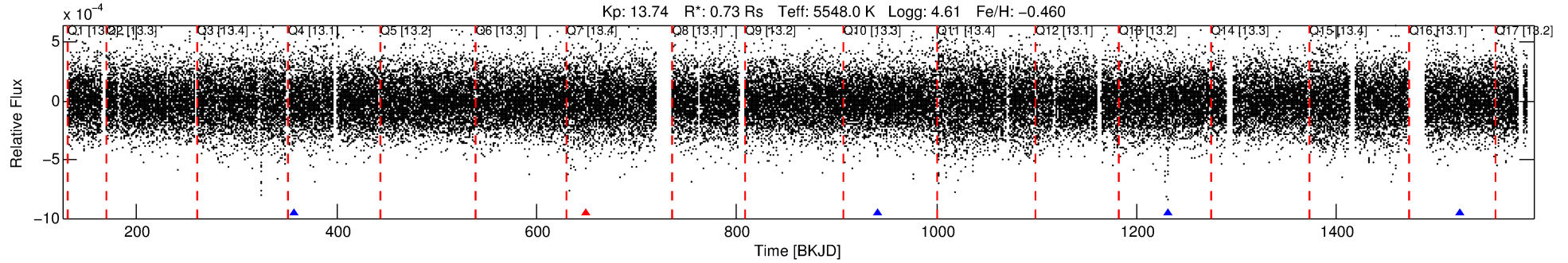
See http://exoplanetarchive.ipac.caltech.edu/docs/API_kepcandidate_columns.html#proj_disp_col for comment definitions.

Ephemeris Match Information For 007954476-01

No Significant Match Found

DV One-Page Summary

KIC: 7954476 Candidate: 1 of 1 Period: 291.595 d



DV Fit Results:

Period = 291.59489 [0.00713] d
Epoch = 357.2718 [0.0179] BKJD
Rp/R* = 0.0142 [0.0119]
a/R* = 186.97 [708.82]
b = 0.79 [1.83]
Seff = 0.71 [0.18]
Teq = 234 [14] K
Rp = 1.14 [0.98] Re
a = 0.8012 [0.1233] AU
Ag = 34071.35 [58448.79] [0.58σ]
Teffp = 4924 [2098] K [2.23σ]

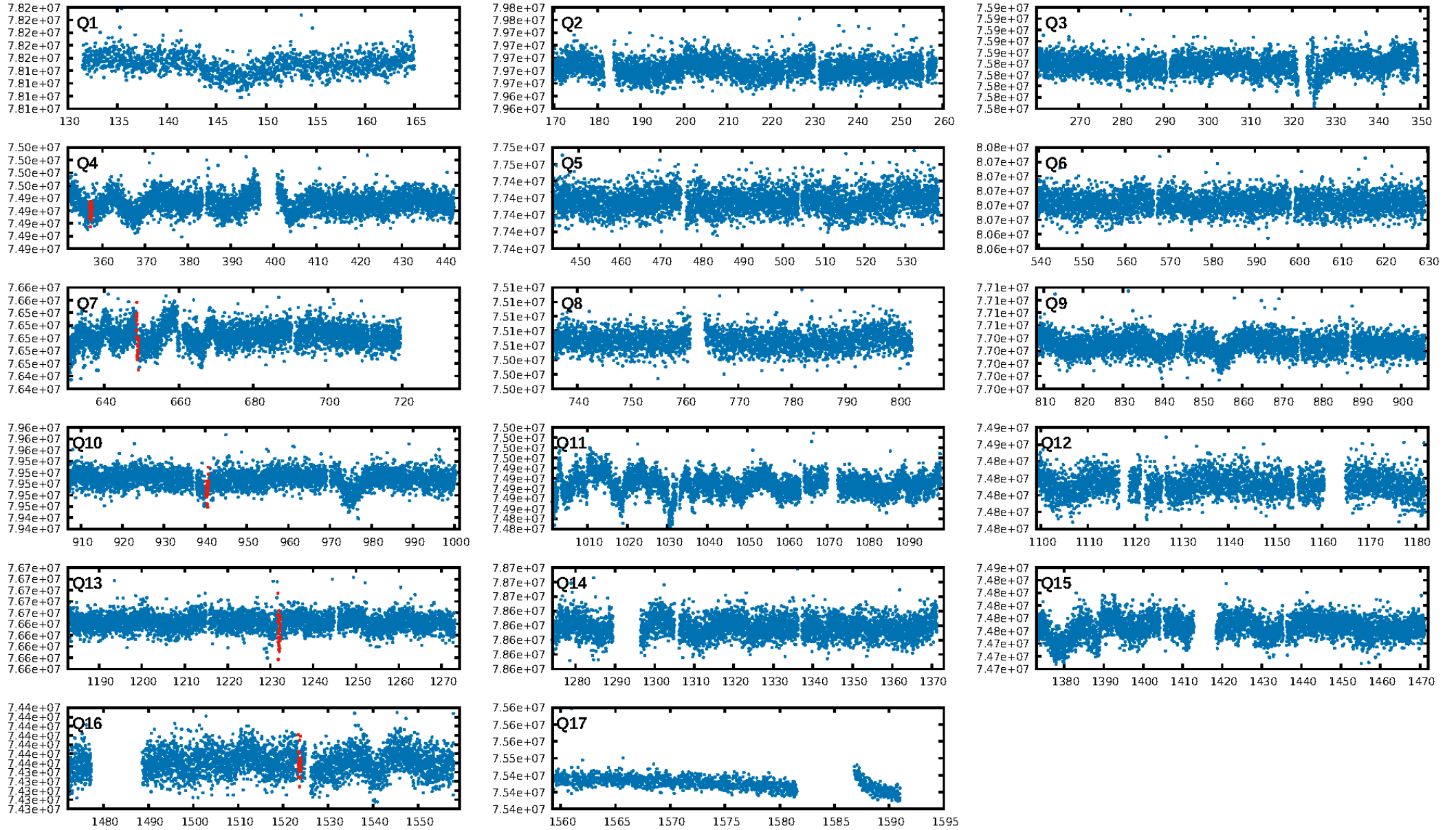
DV Diagnostic Results:

ShortPeriod-sig: N/A
LongPeriod-sig: N/A
ModelChiSquare2-sig: 11.5%
ModelChiSquareGof-sig: 87.3%
Bootstrap-pfa: 3.09e-15
RollingBand-fgt: 0.80 [4/5]
GhostDiagnostic-chr: 0.9331
Centroid-sig: 73.1%
Centroid-so: 1.085 arcsec [0.59σ]
OotOffset-rm: 2.581 arcsec [1.17σ]
OotOffset-st: 1/1/1/0 [3]
KicOffset-rm: 2.476 arcsec [1.13σ]
KicOffset-st: 1/1/1/0 [3]
DiffImageQuality-fgm: 0.67 [2/3]
DiffImageOverlap-fno: 1.00 [4/4]

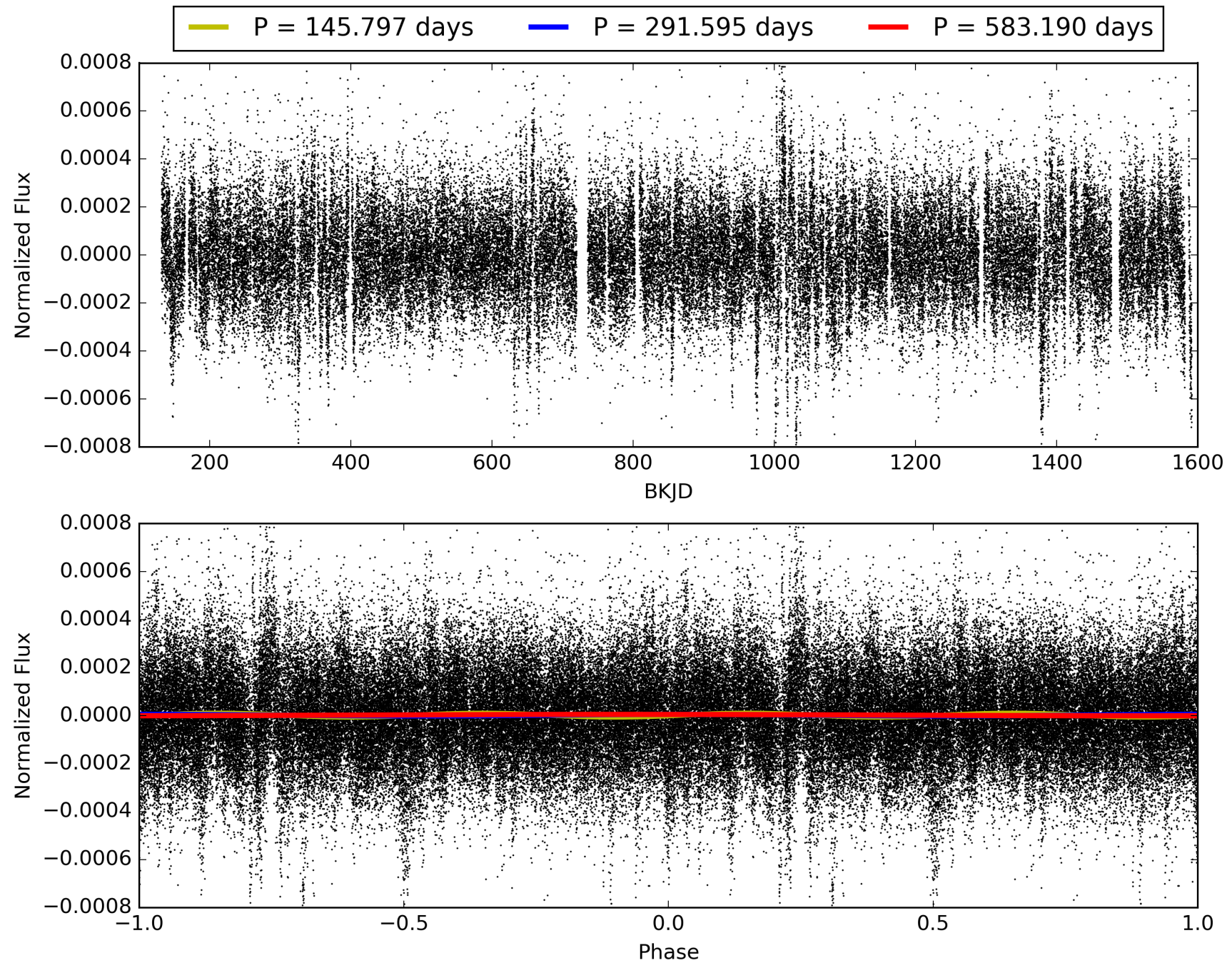
Software Revision: svn+ssh://murzim/repo/soc/tags/release/9.3.42@60958 -- Date Generated: 30-Jan-2016 13:22:44 Z

This Data Validation Report Summary was produced in the Kepler Science Operations Center Pipeline at NASA Ames Research Center

TCE 007954476-01, PDC Light Curves

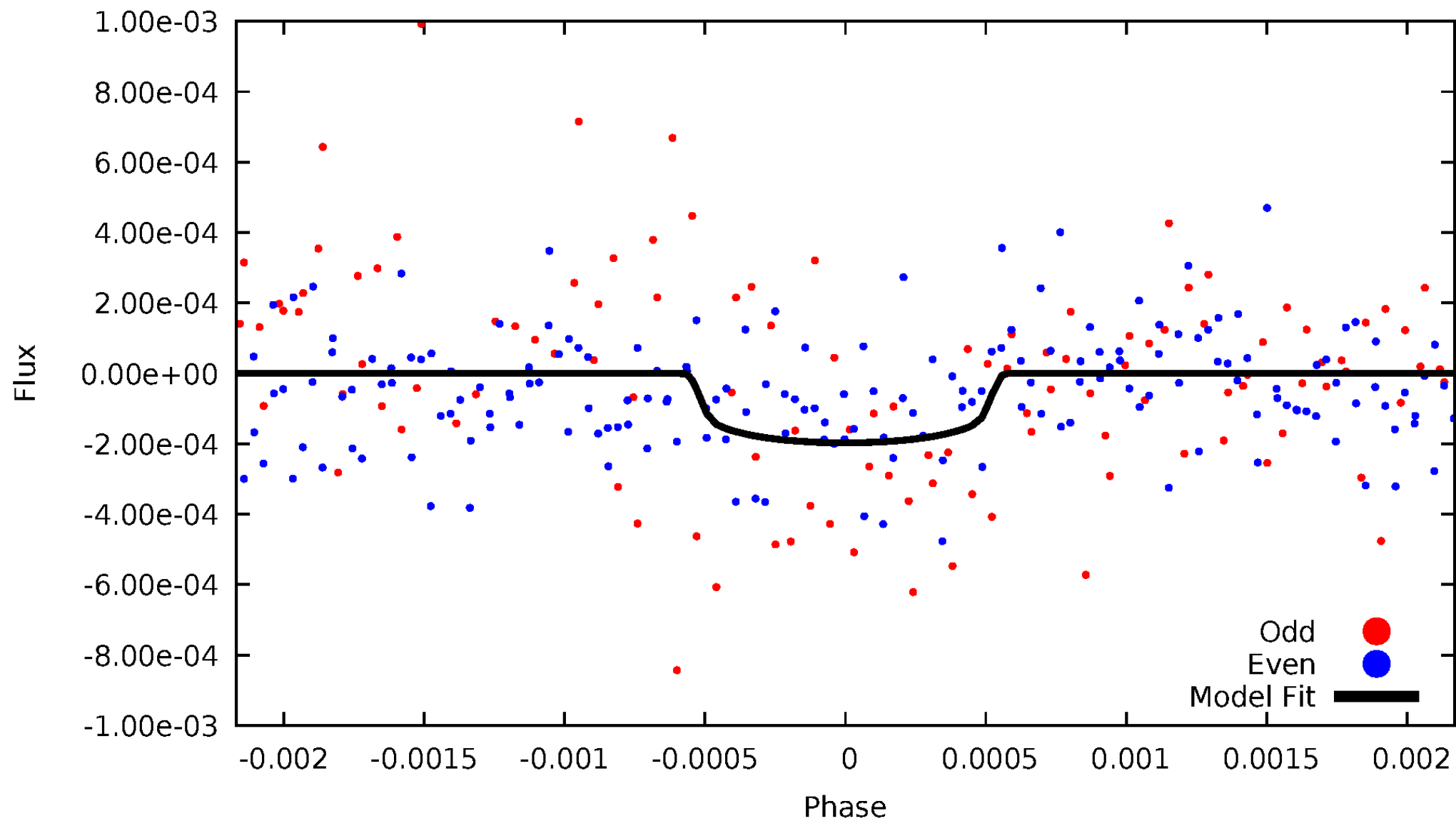


TCE 007954476-01



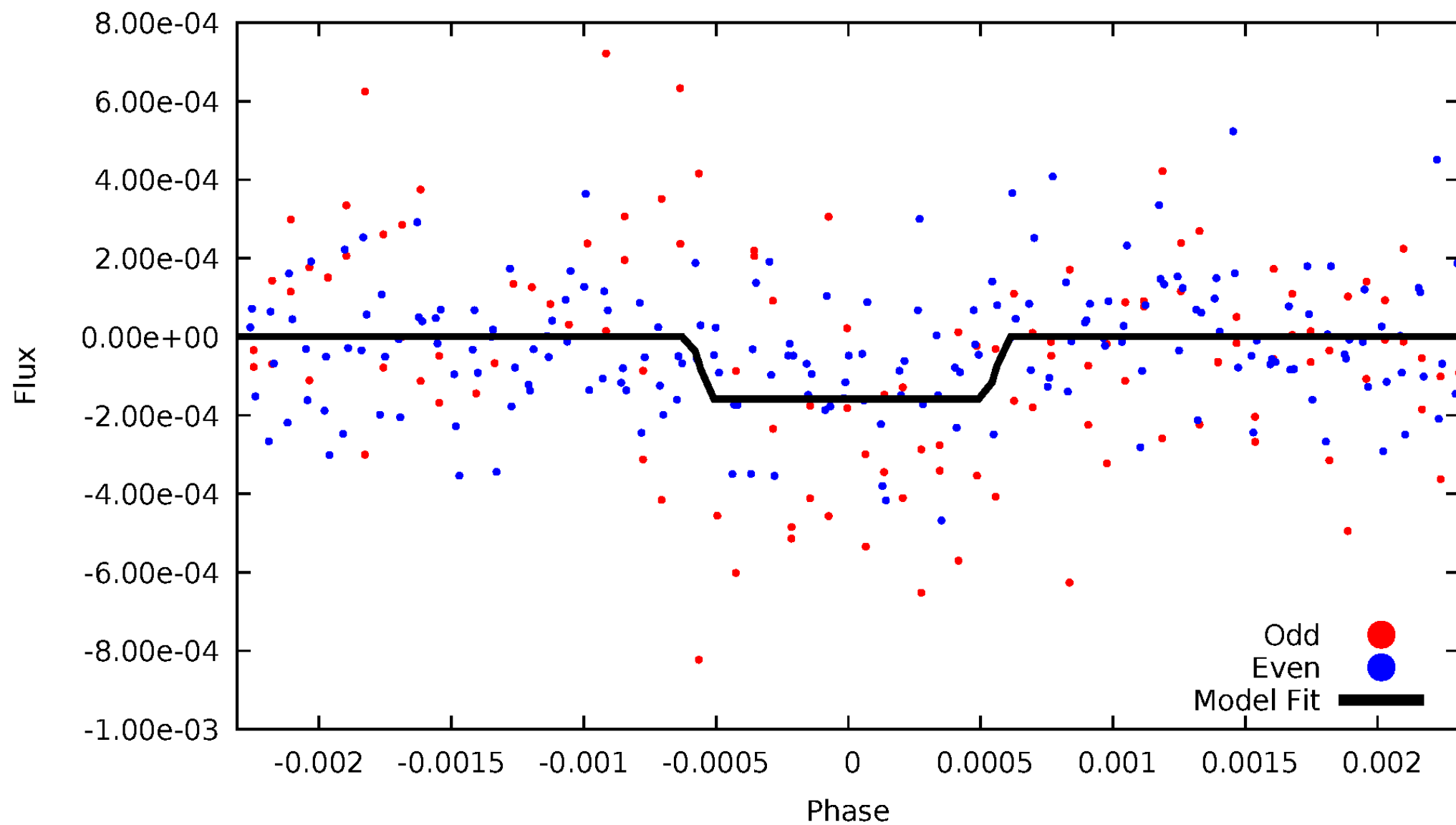
DV Odd/Even

TCE 007954476-01

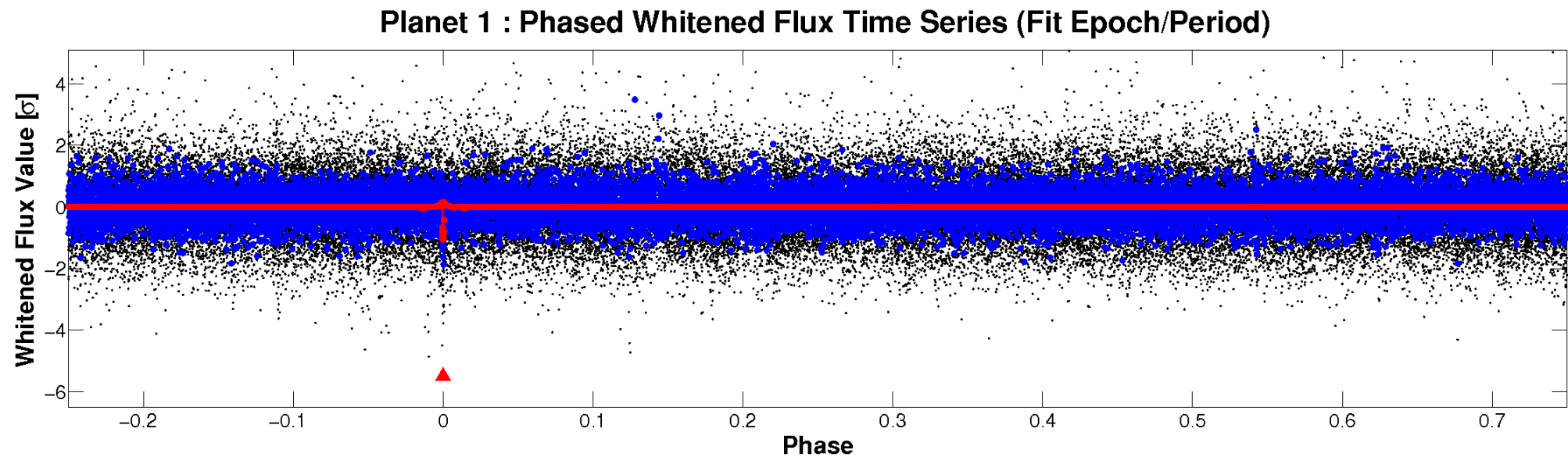
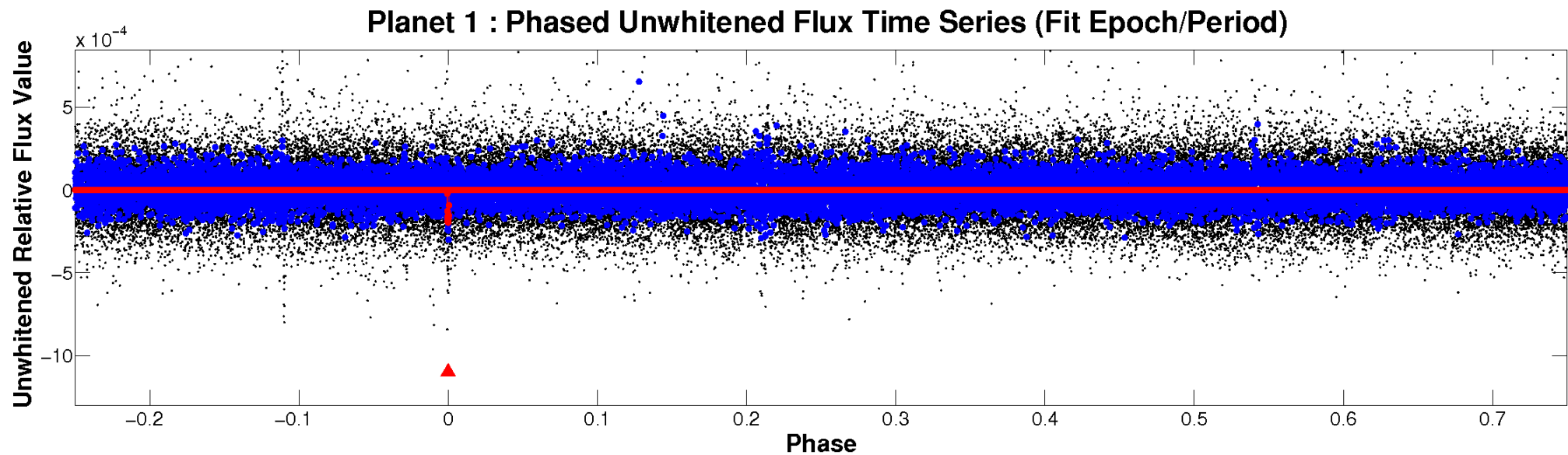


ALT Odd/Even

TCE 007954476-01

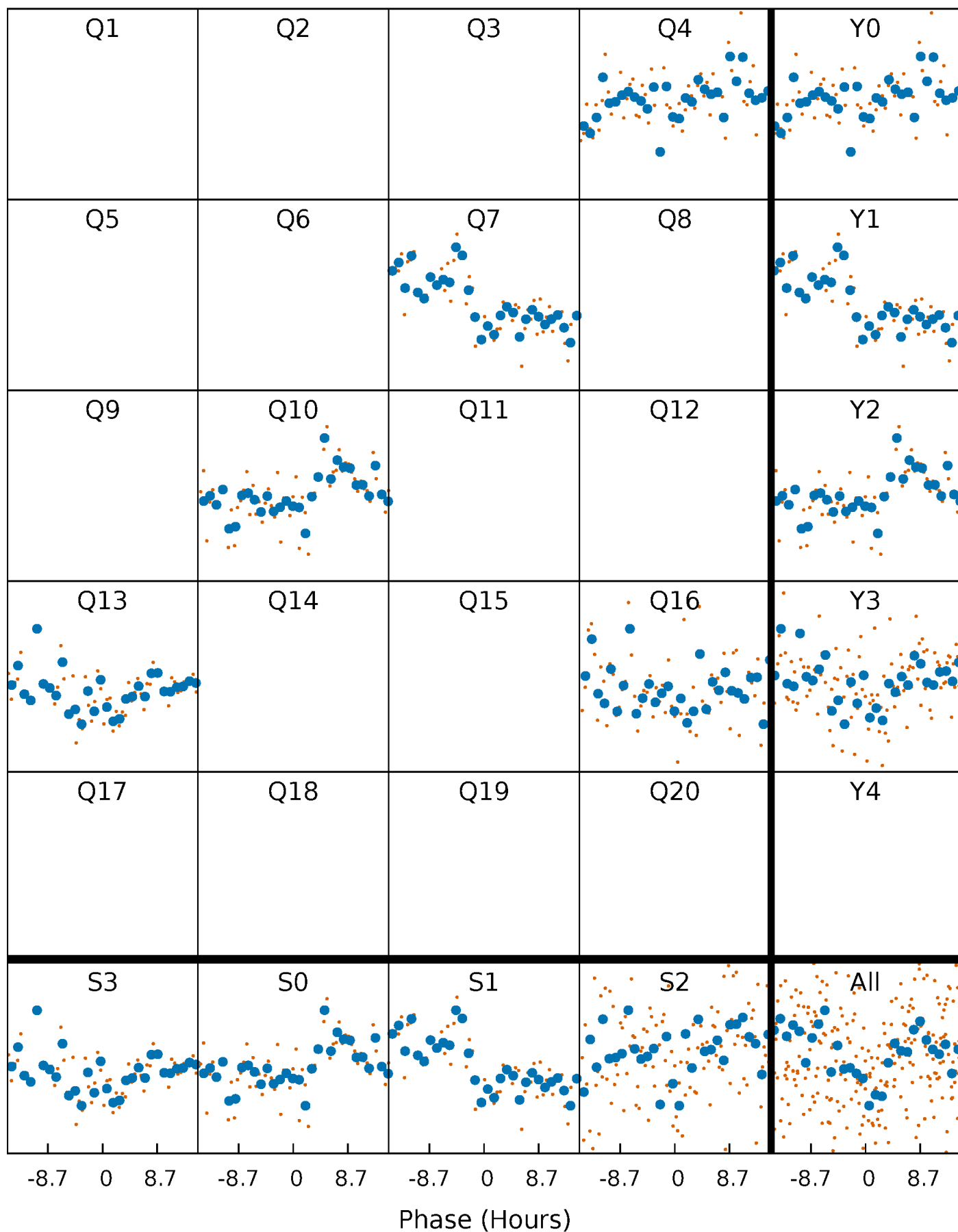


Non-Whitened Vs. Whitened Light Curve



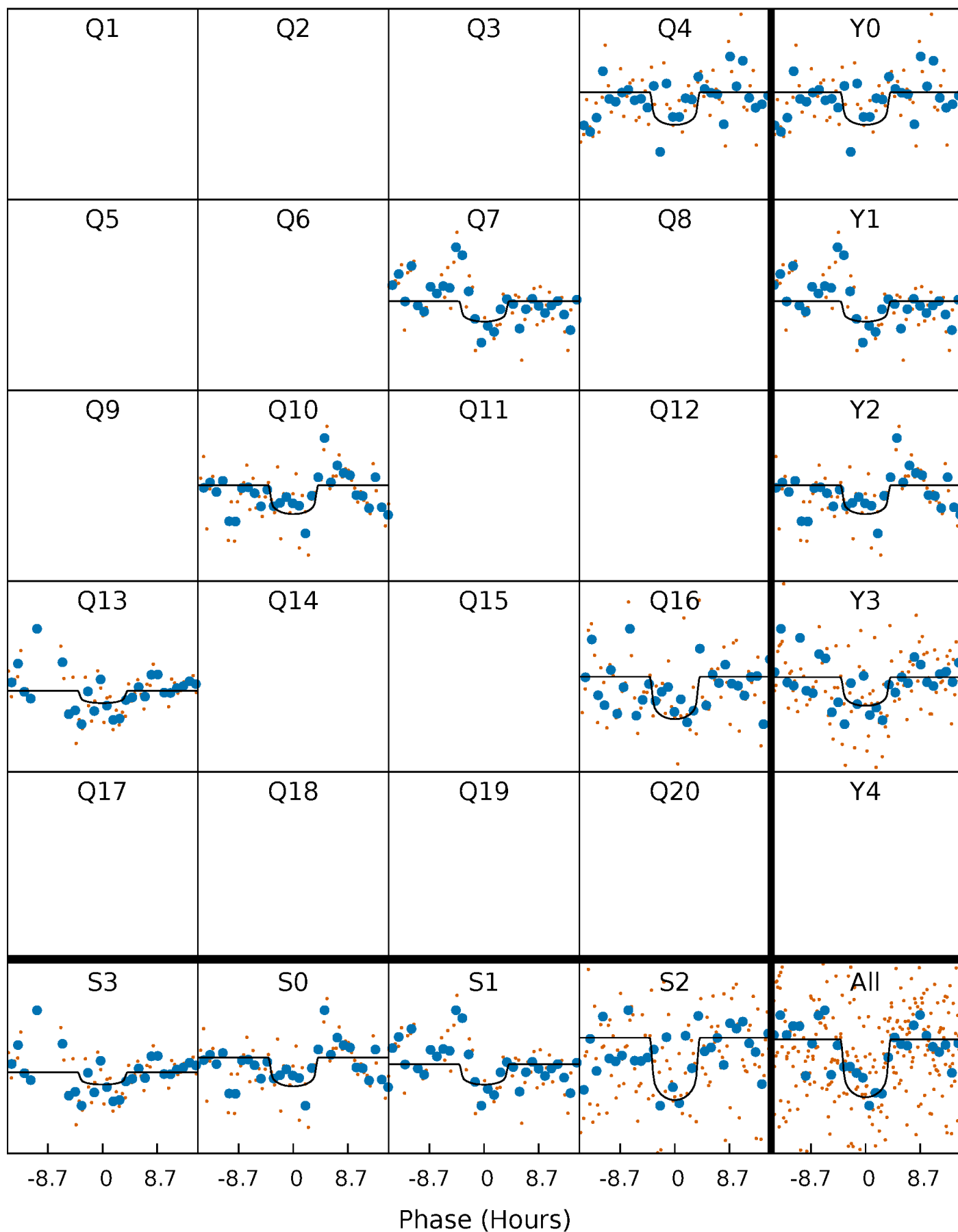
PDC Quarter-Phased Transit Curves

TCE 007954476-01 P=291.594888 Days $T_0=357.271817$ (BKJD)



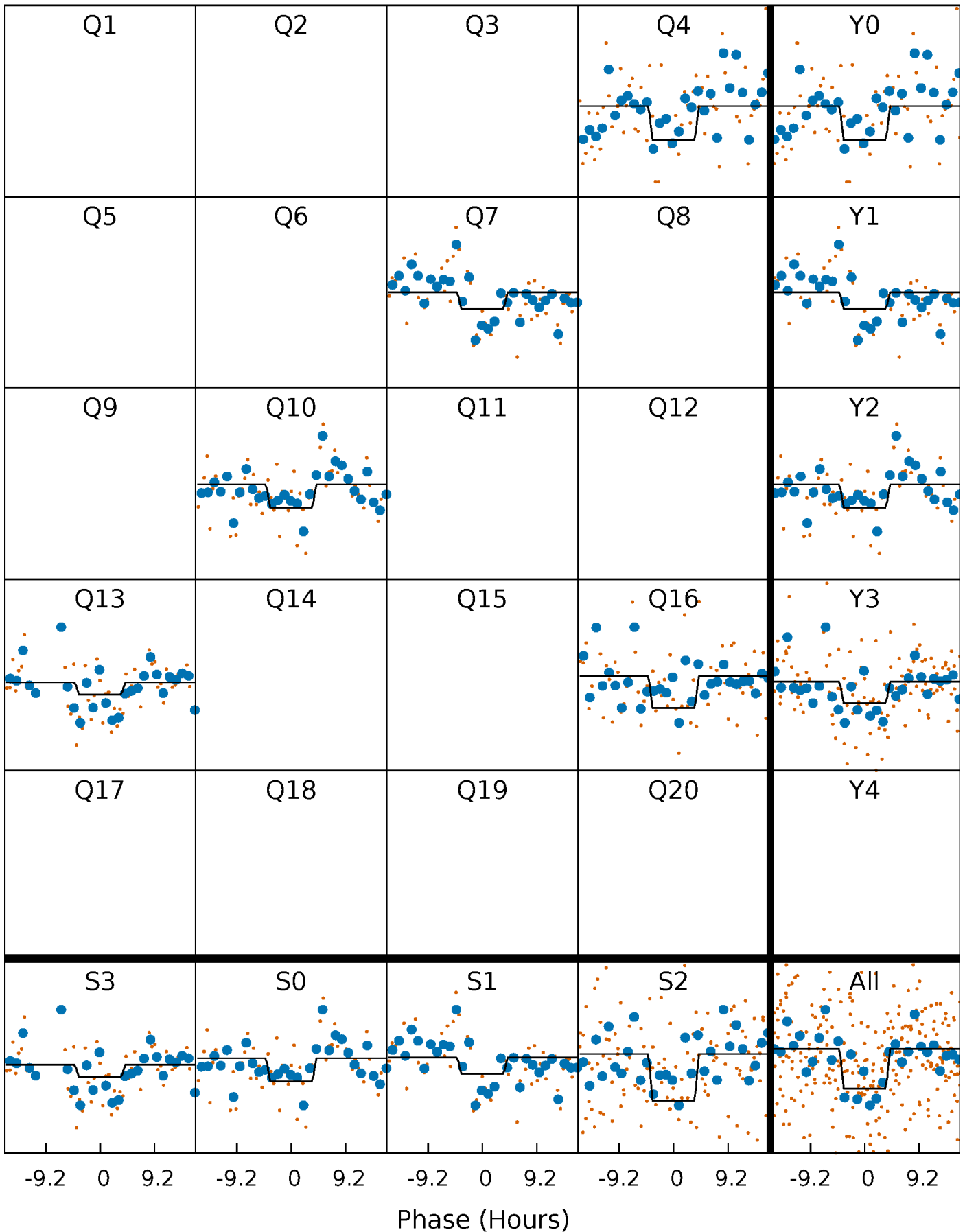
DV Quarter-Phased Transit Curves

TCE 007954476-01 P=291.594888 Days $T_0=357.271817$ (BKJD)



Alt. Detrend Quarter-Phased Transit Curves

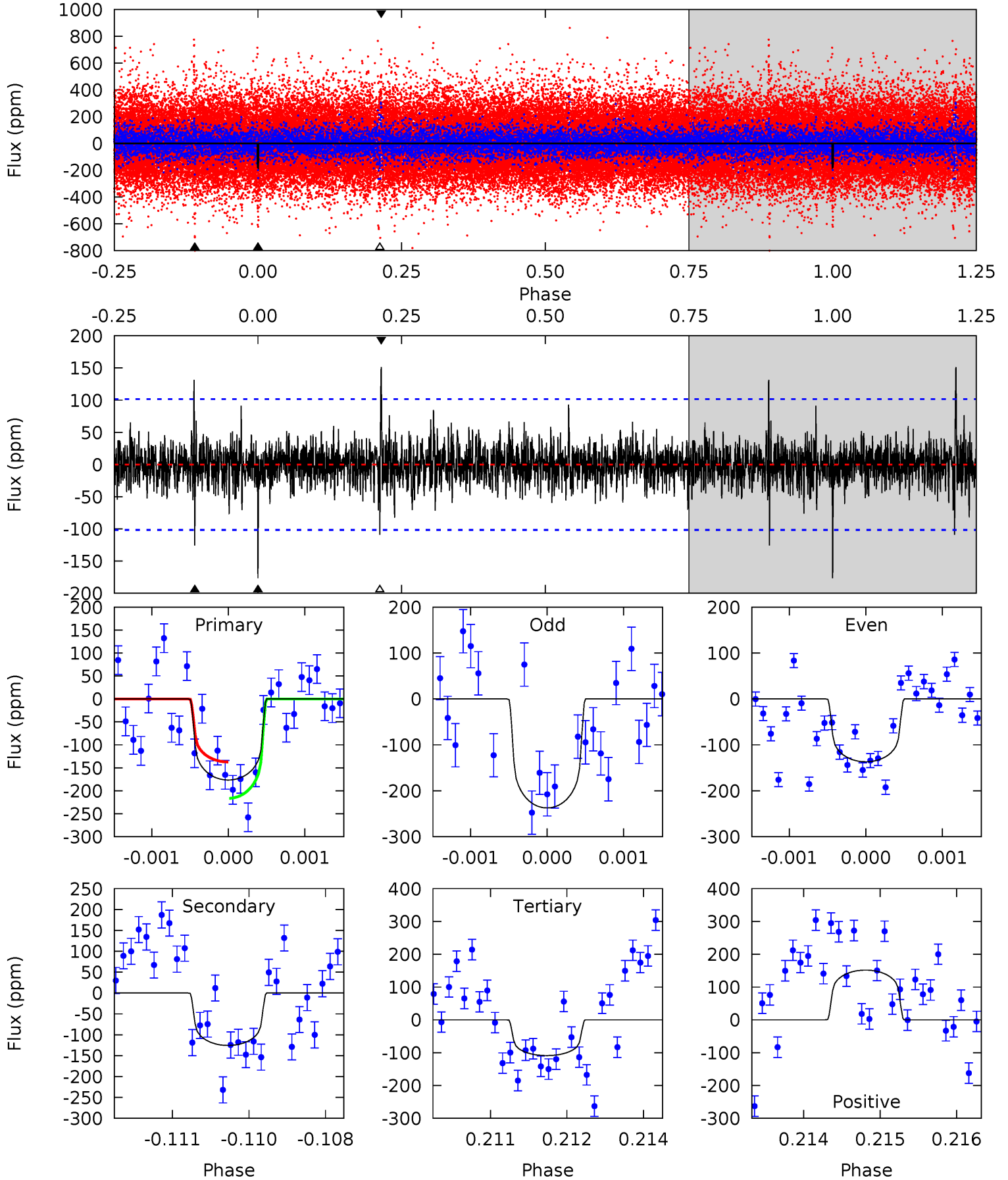
TCE 007954476-01 P=291.586901 Days $T_0=357.285653$ (BKJD)



DV Model-Shift Uniqueness Test

007954476-01, P = 291.594888 Days, E = 65.676929 Days

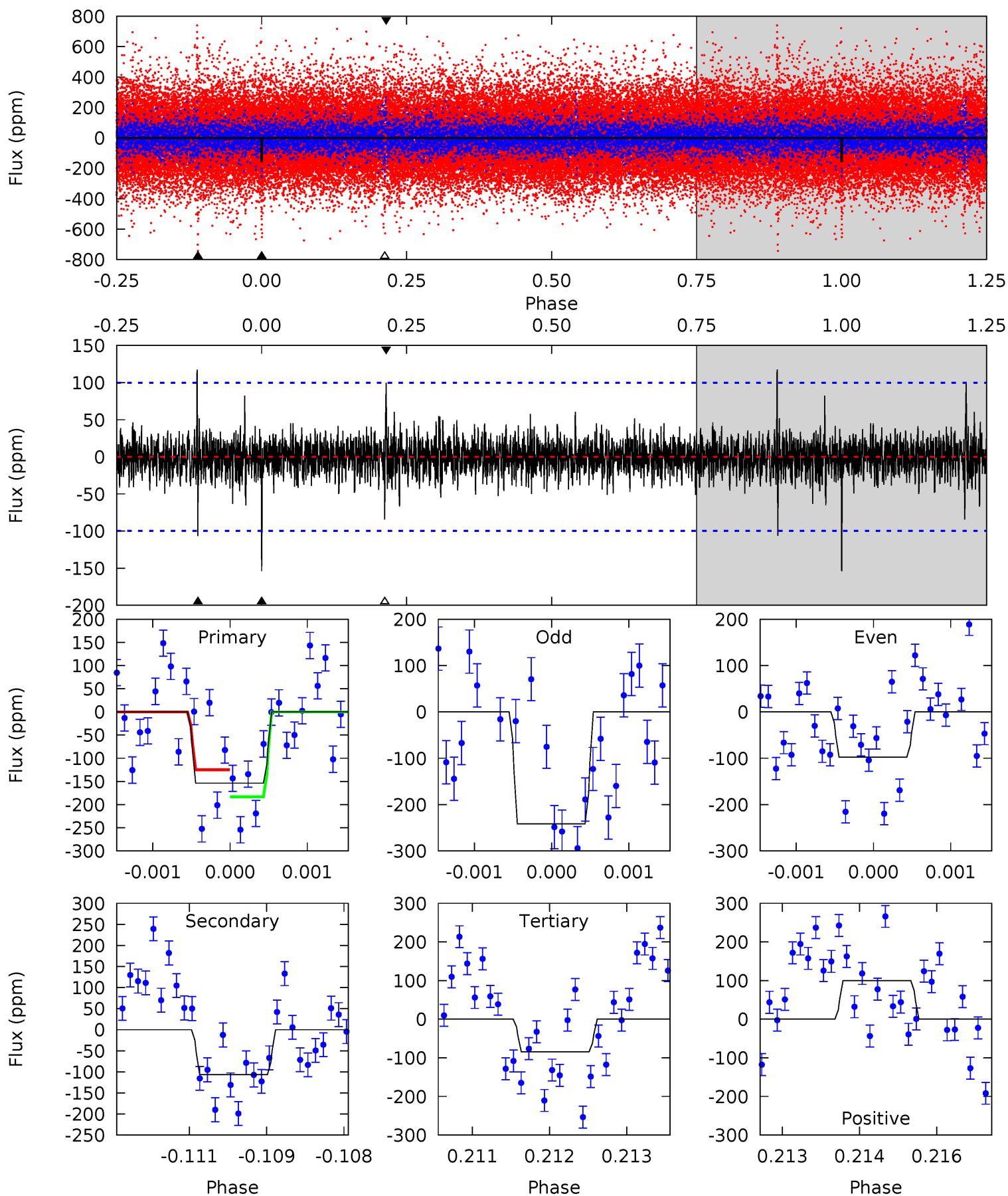
Pri	Sec	Ter	Pos	FA ₁	FA ₂	F _{Red}	Pri-Ter	Pri-Pos	Sec-Ter	Sec-Pos	Odd-Evn	DMM	Shape	TAT
9.43	6.71	5.82	8.10	5.43	3.25	1.21	3.62	1.33	0.89	-1.39	2.65	1.09	0.46	2.12



Alt Model-Shift Uniqueness Test

007954476-01, P = 291.586901 Days, E = 65.698752 Days

Pri	Sec	Ter	Pos	FA ₁	FA ₂	F _{Red}	Pri-Ter	Pri-Pos	Sec-Ter	Sec-Pos	Odd-Evn	DMM	Shape	TAT
8.37	5.79	4.59	5.44	5.43	3.25	0.95	3.78	2.94	1.20	0.35	3.86	1.25	0.43	1.59



Stellar Parameters For KIC 007954476

	$T_{\text{eff}}(K)$	$\log(g)$	[Fe/H]	$R (R_{\odot})$	$M(M_{\odot})$	$p_{\star} (\text{g}\cdot\text{cm}^{-3})$
	5548^{+149}_{-149}	$4.612^{+0.037}_{-0.120}$	$-0.460^{+0.350}_{-0.300}$	$0.735^{+0.136}_{-0.054}$	$0.815^{+0.079}_{-0.087}$	$2.894^{+0.464}_{-1.041}$
	+3%/-3%	+1%/-3%	+76%/-65%	+19%/-7%	+10%/-11%	+16%/-36%
Source	PHO1	KIC0	KIC0	DSEP		

KIC = Kepler Input Catalog; PHO = Photometry; SPE = Spectroscopy; AST = Asteroseismology
 TRA = Transits; DESP = Dartmouth Models; MULT = Multiple Models

Secondary Eclipse Parameters for KIC 007954476-01 / KOI

Detrend	Depth (ppm)	$R_p (R_{\oplus})$	$T_{max} (K)$	$T_{obs} (K)$	A_{obs}
DV	-126 ± 19	$1.35^{+0.91}_{-0.86}$	333^{+15}_{-12}	4726^{+2911}_{-839}	$23507^{+149084}_{-14881}$
Alt.	-106 ± 18	$1.25^{+0.88}_{-0.74}$	332^{+15}_{-13}	4718^{+2737}_{-852}	$24297^{+130840}_{-16057}$

T_{max} = Theoretical Maximum Planetary Temperature

T_{obs} = Observed Planetary Temperature (Assuming $A=0.3$)

A_{obs} = Observed Albedo (Assuming $T=0$)

If a secondary eclipse is present, the system is likely an EB if $T_{obs} \gg T_{max}$ AND $A_{obs} \gg 1.0$

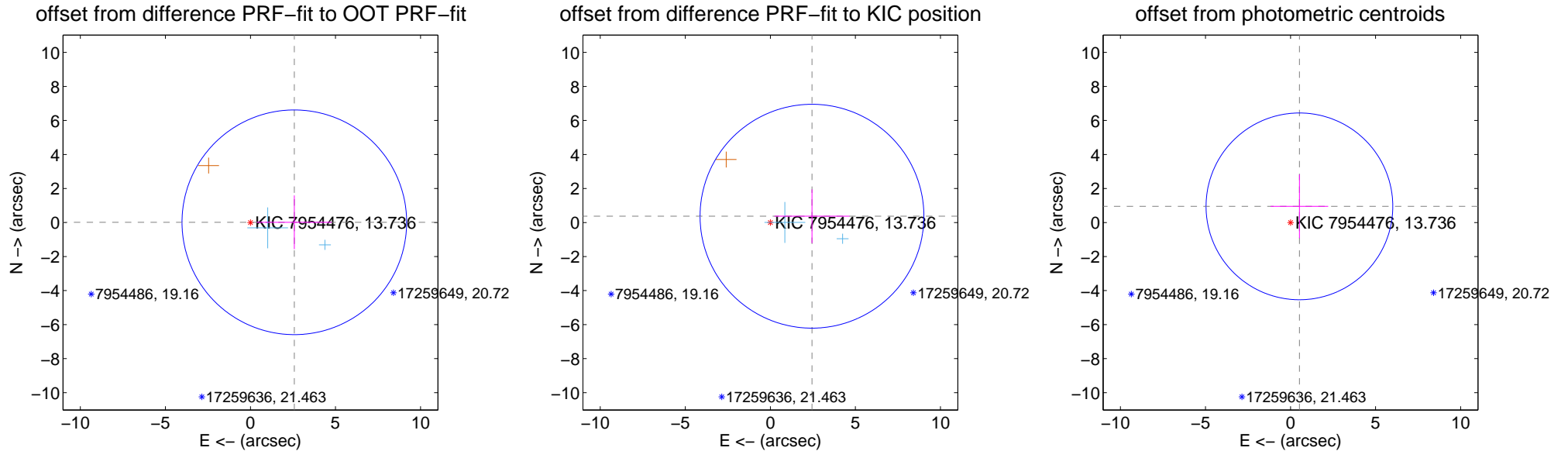
DV Centroid Data

Supplemental centroid analysis for 007954476-01. Kepler magnitude: 13.74. Transit SNR 7.86

There are 2 quarters with good PRF difference image offsets

The direct PRF centroid is offset from the target star catalog position by about 0.38 arcsec

	Distance in arcsec	Distance / σ	Δ RA	Δ Dec
PRF-fit source offset from OOT	2.581 ± 2.202	1.17	-2.581 ± 2.202	0.014 ± 1.580
PRF-fit source offset from KIC position	2.476 ± 2.193	1.13	-2.448 ± 2.206	0.371 ± 1.580
photometric centroid source offset	1.08 ± 1.83	0.59	-0.52 ± 1.69	0.95 ± 1.87



Centroid source offsets from the target star reconstructed from PRF and photometric centroids. Sky blue crosses: good quarterly centroid offsets; Vermillion crosses: bad quarterly centroid offsets; magenta cross: average over quarters. Length of the crosses: one- σ uncertainty. Blue circle: three- σ . Red *: target star. Blue *: Other stars. Text next to a star gives its KIC ID and kepmag. KIC IDs > 15,000,000 are from the UKIRT catalog.

white \times : KIC target position; +: OOT centroid; \triangle : difference centroid. red \times : large negative pixel value.

Q1 no difference image



Q1 no OOT image



Q2 no difference image



Q2 no OOT image



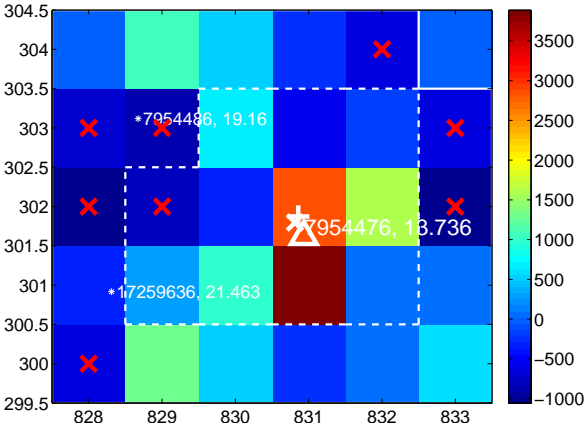
Q3 no difference image



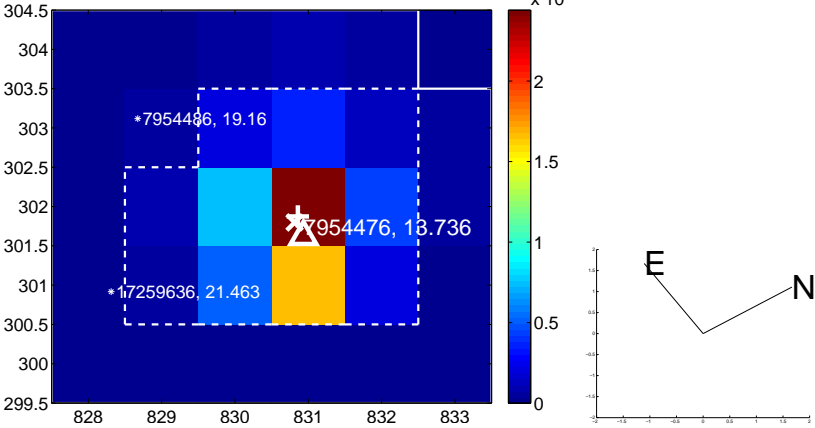
Q3 no OOT image



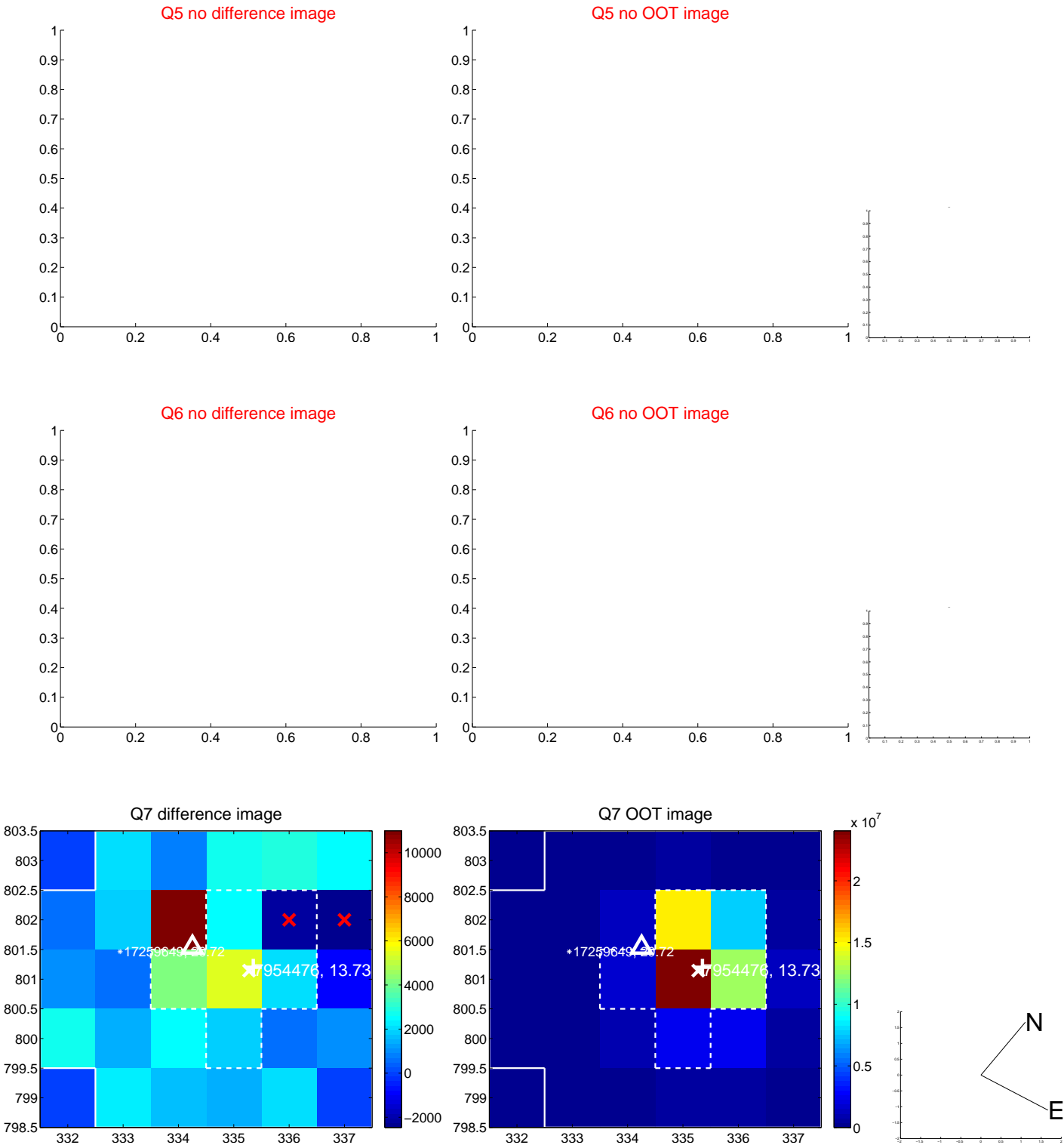
Q4 difference image



Q4 OOT image



white \times : KIC target position; $+$: OOT centroid; \triangle : difference centroid. red \times : large negative pixel value.



white \times : KIC target position; $+$: OOT centroid; \triangle : difference centroid. red \times : large negative pixel value.

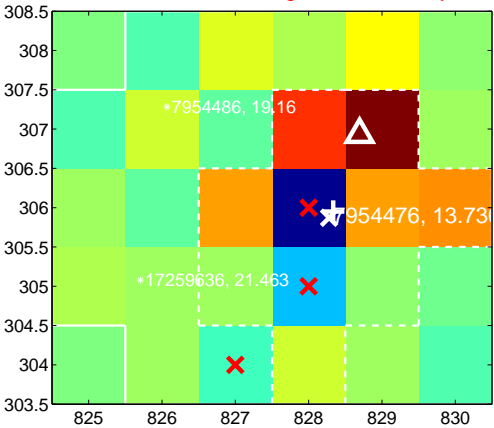
Q9 no difference image



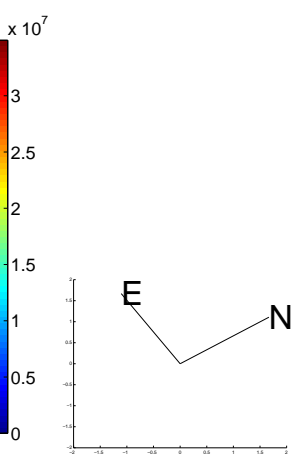
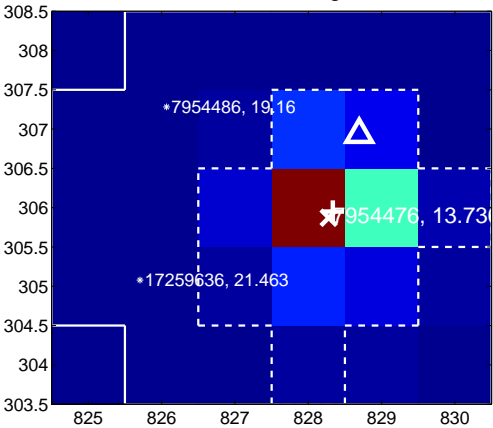
Q9 no OOT image



Q10 difference image. Poor Quality



Q10 OOT image



Q11 no difference image



Q11 no OOT image



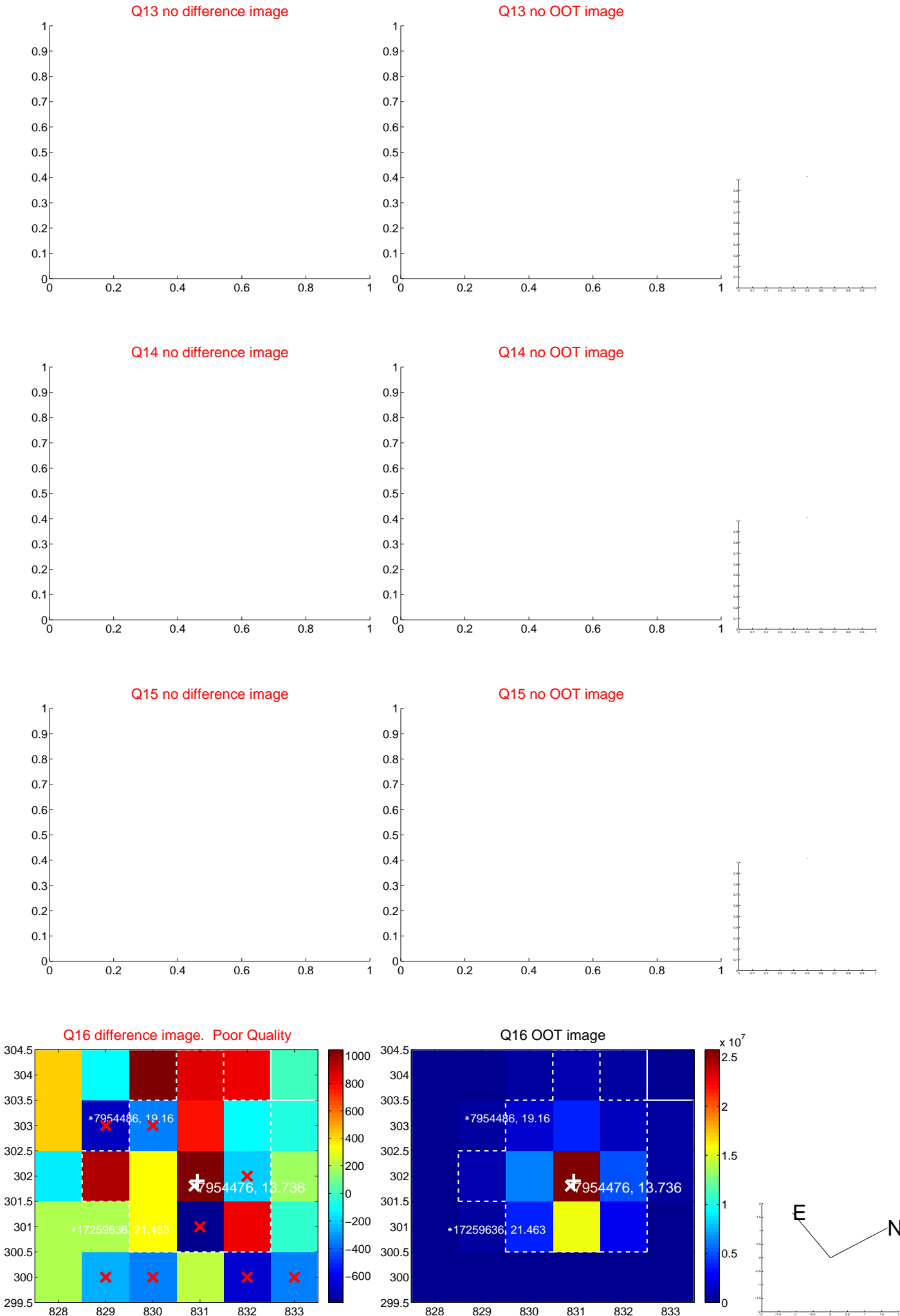
Q12 no difference image



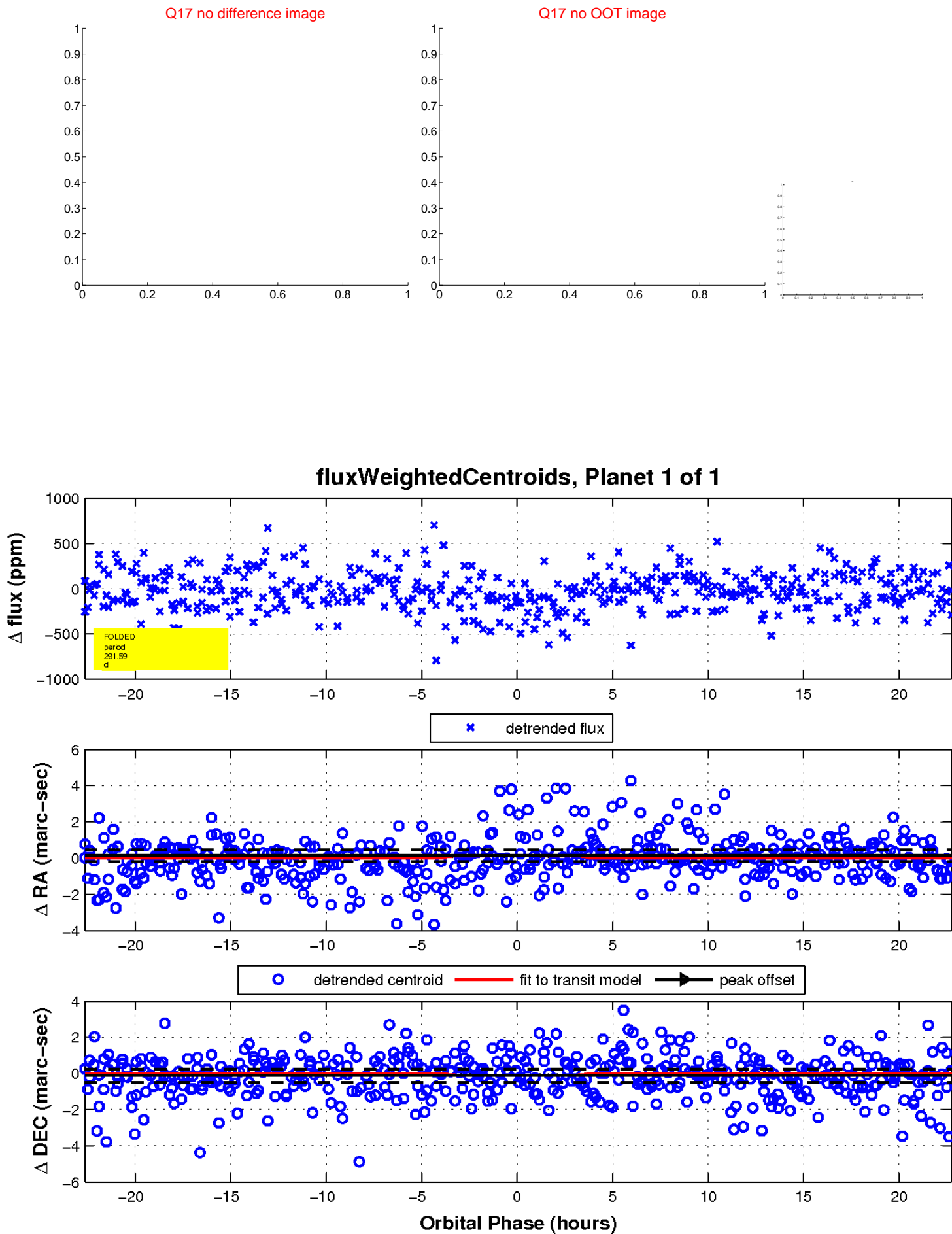
Q12 no OOT image



white ×: KIC target position; +: OOT centroid; △: difference centroid. red ✕: large negative pixel value.



white \times : KIC target position; $+$: OOT centroid; \triangle : difference centroid. red \times : large negative pixel value.



UKIRT Image

Declination

