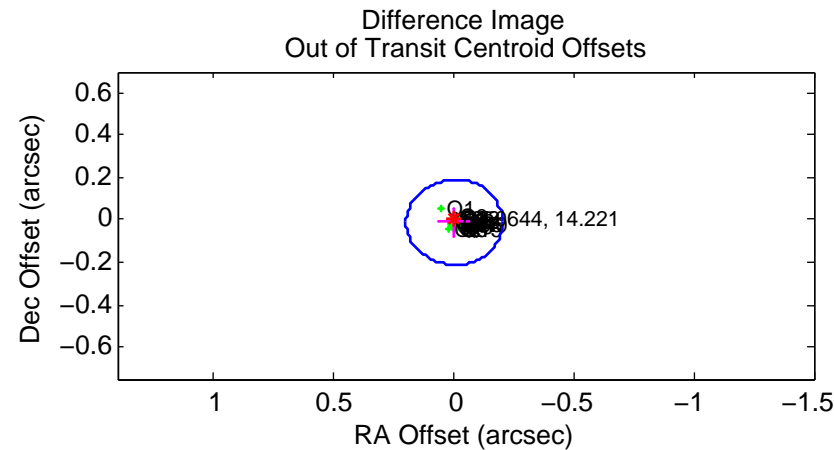
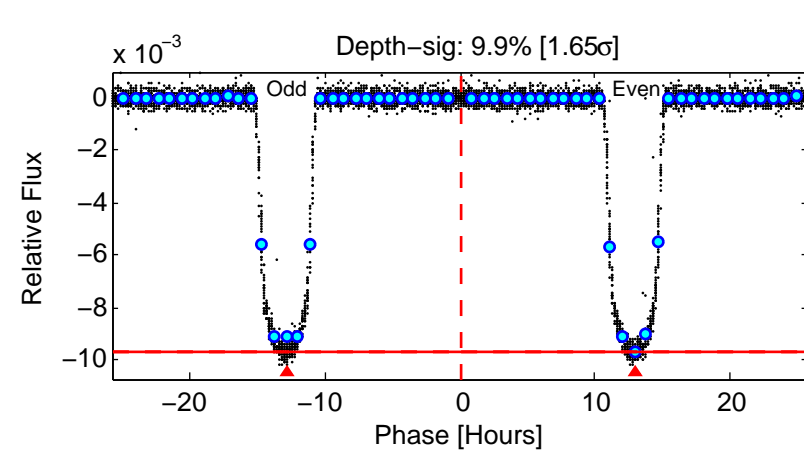
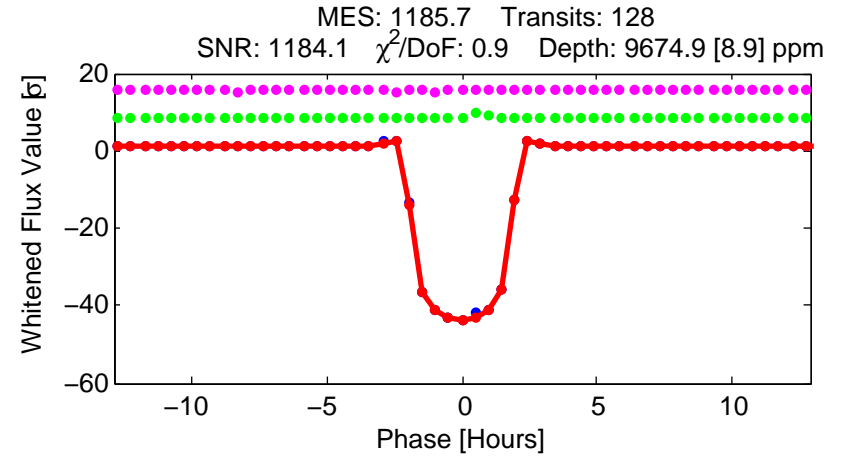
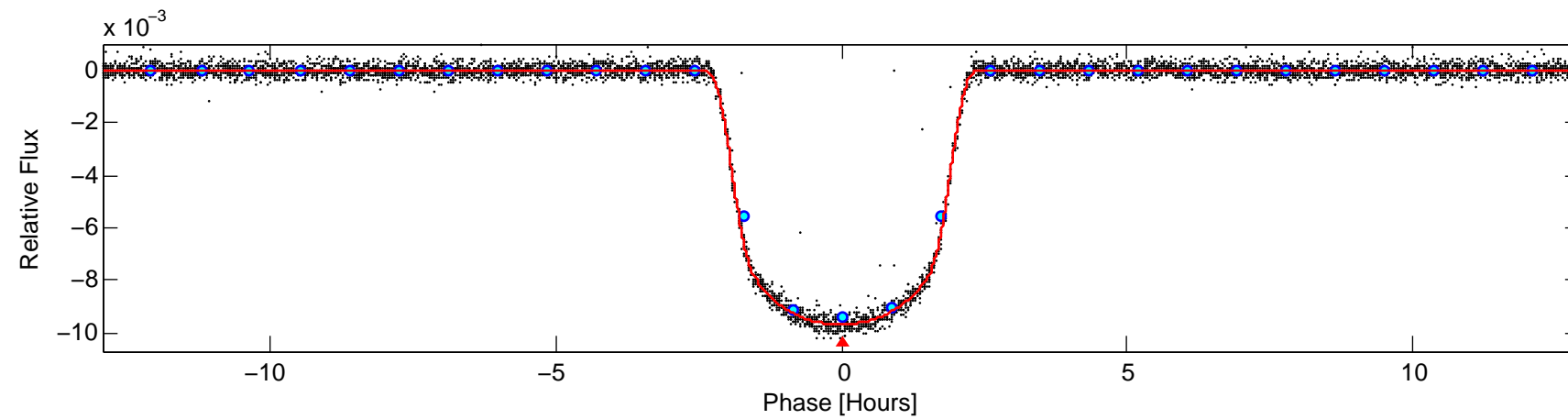
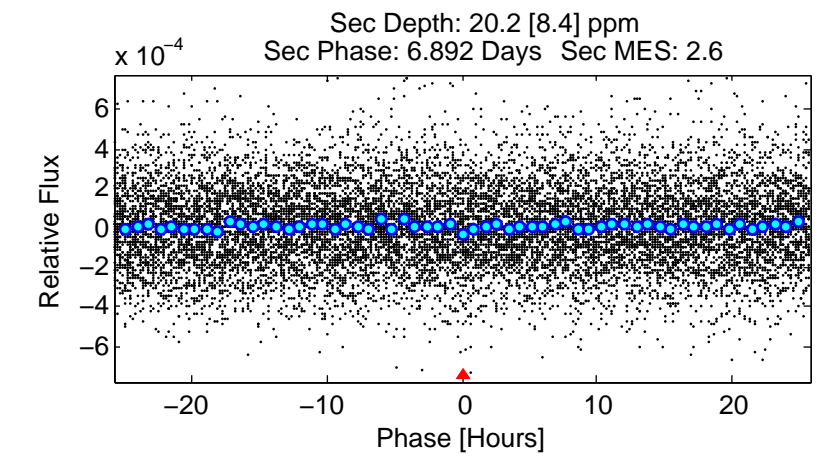
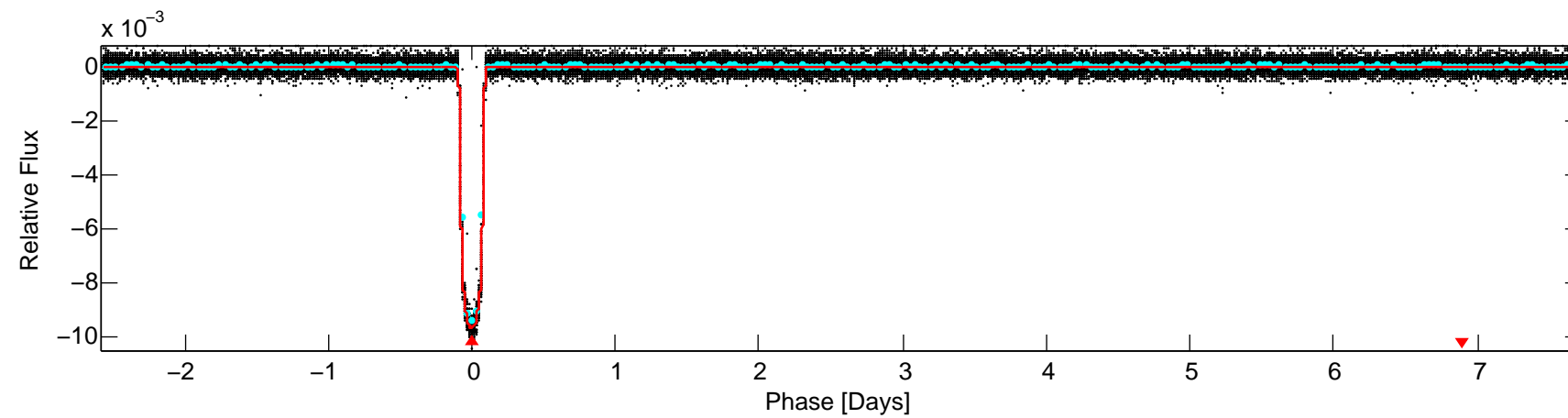
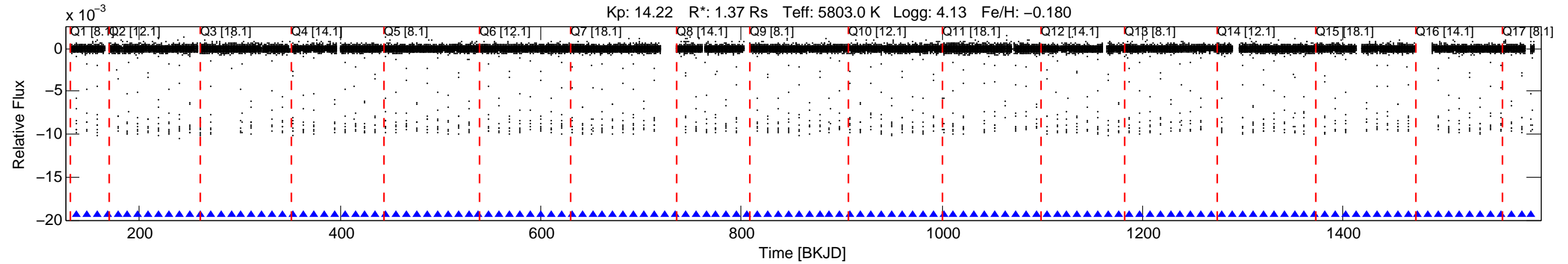


KIC: 7950644 Candidate: 1 of 1 Period: 10.291 d
 KOI: K00192.01 Name: Kepler-427b Corr: 0.998



DV Fit Results:

Period = 10.29099 [0.00000] d
 Epoch = 137.0221 [0.0001] BKJD
 Rp/R* = 0.0901 [0.0003]
 a/R* = 19.40 [0.32]
 b = 0.24 [0.06]
 Seff = 233.35 [80.99]
 Teq = 997 [86] K
 Rp = 13.50 [3.03] Re
 a = 0.0906 [0.0195] AU
 Ag = 0.50 [0.27] [-1.85σ]
 Teffp = 1296 [135] K [1.86σ]

DV Diagnostic Results:

ShortPeriod-sig: N/A
 LongPeriod-sig: N/A
 ModelChiSquare2-sig: 1.3%
 ModelChiSquareGof-sig: 100.0%
 Bootstrap-pfa: 0.00e+00
 RollingBand-fgt: 1.00 [122/122]
 GhostDiagnostic-chr: 6.762
 Centroid-sig: 0.0%
 Centroid-so: 0.069 arcsec [7.05σ]
 OotOffset-rm: 0.012 arcsec [0.18σ]
 KicOffset-rm: 0.134 arcsec [1.98σ]
 OotOffset-st: 4/4/4/5 [17]
 KicOffset-st: 4/4/4/5 [17]
 DiffImageQuality-fgm: 1.00 [17/17]
 DiffImageOverlap-fno: 1.00 [17/17]