

KIC 007947574

Q1-17 DR25 TCE Parameters

TCE	Run Type	KOI?	Period (Days)	Epoch (BKJD)	Depth (ppm)	Duration (Hours)	MES	SNR	R_{\star} (R_{\odot})	T_{\star} (K)	R_p (R_{\oplus})	S_p (S_{\oplus})
007947574-01	OBS	No	432.392667	205.833588	144.2	13.548	7.2	6.7	0.95	5776	1.22	0.69

Robovetter Results

TCE	Run Type	Disp	Score	N	S	C	E	Comments
007947574-01	OBS	FP	0.00	1	0	0	0	INDIV_TRANS_MARSHALL

Notes: OBS = Observed. INJ = Injected. INV = Inverted. SCR = Scrambled.

N = Not Transit-Like. S = Stellar Eclipse. C = Centroid Offset. E = Ephemeris Match.

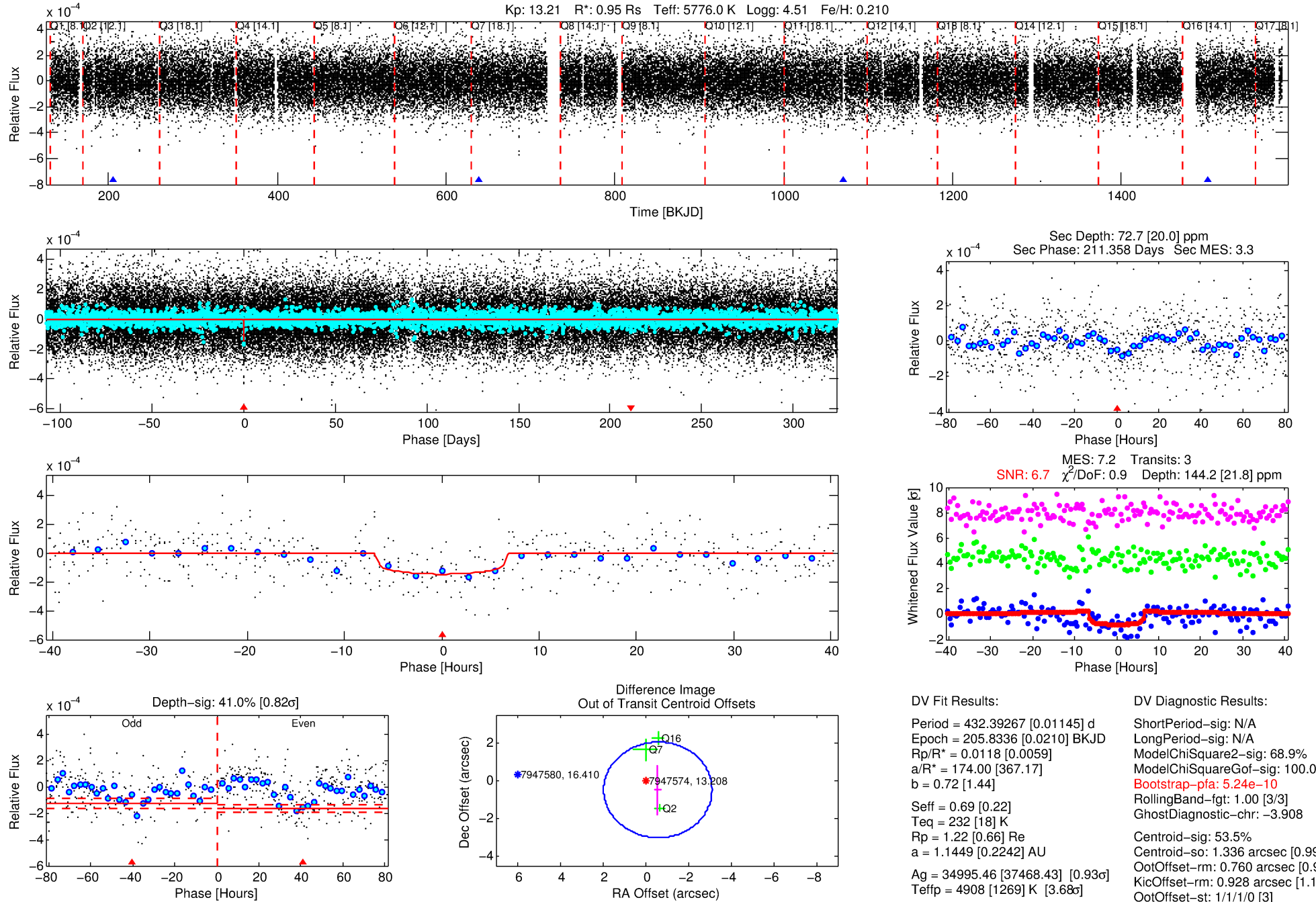
See http://exoplanetarchive.ipac.caltech.edu/docs/API_kepcandidate_columns.html#proj_disp_col for comment definitions.

Ephemeris Match Information For 007947574-01

No Significant Match Found

DV One-Page Summary

KIC: 7947574 Candidate: 1 of 1 Period: 432.393 d



DV Fit Results:

Period = 432.39267 [0.01145] d
Epoch = 205.8336 [0.0210] BKJD
Rp/R* = 0.0118 [0.0059]
a/R* = 174.00 [367.17]
b = 0.72 [1.44]
Seff = 0.69 [0.22]
Teq = 232 [18] K
Rp = 1.22 [0.66] Re
a = 1.1449 [0.2242] AU
Ag = 34995.46 [37468.43] [0.93 σ]
Teffp = 4908 [1269] K [3.68 σ]

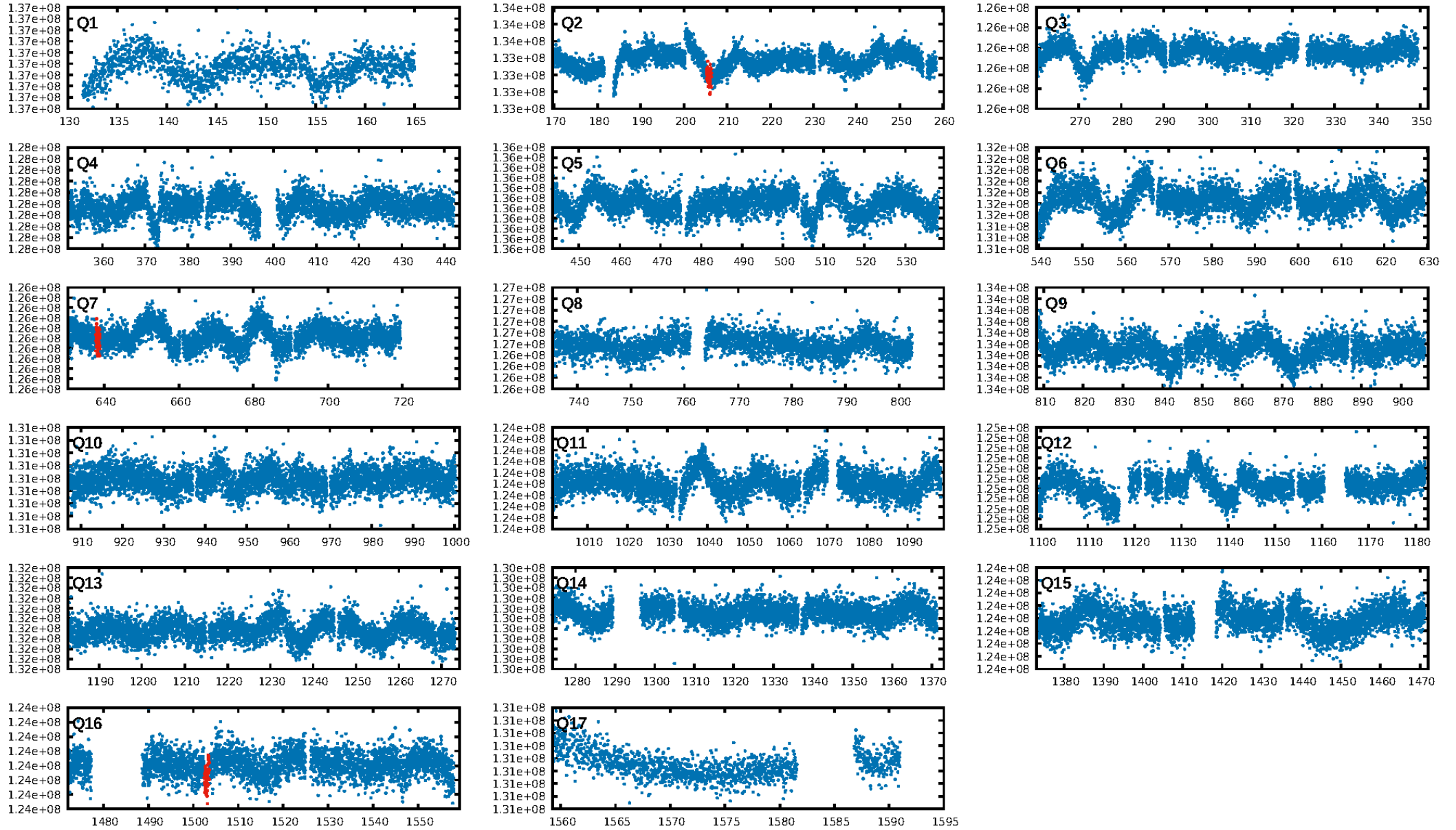
DV Diagnostic Results:

ShortPeriod-sig: N/A
LongPeriod-sig: N/A
ModelChiSquare2-sig: 68.9%
ModelChiSquareGof-sig: 100.0%
Bootstrap-pfa: 5.24e-10
RollingBand-fgt: 1.00 [3/3]
GhostDiagnostic-chr: -3.908
Centroid-sig: 53.5%
Centroid-so: 1.336 arcsec [0.99 σ]
OotOffset-rm: 0.760 arcsec [0.90 σ]
OotOffset-st: 1/1/1/0 [3]
KicOffset-rm: 0.928 arcsec [1.13 σ]
KicOffset-st: 1/1/1/0 [3]
DiffImageQuality-fgm: 1.00 [3/3]
DiffImageOverlap-fno: 1.00 [3/3]

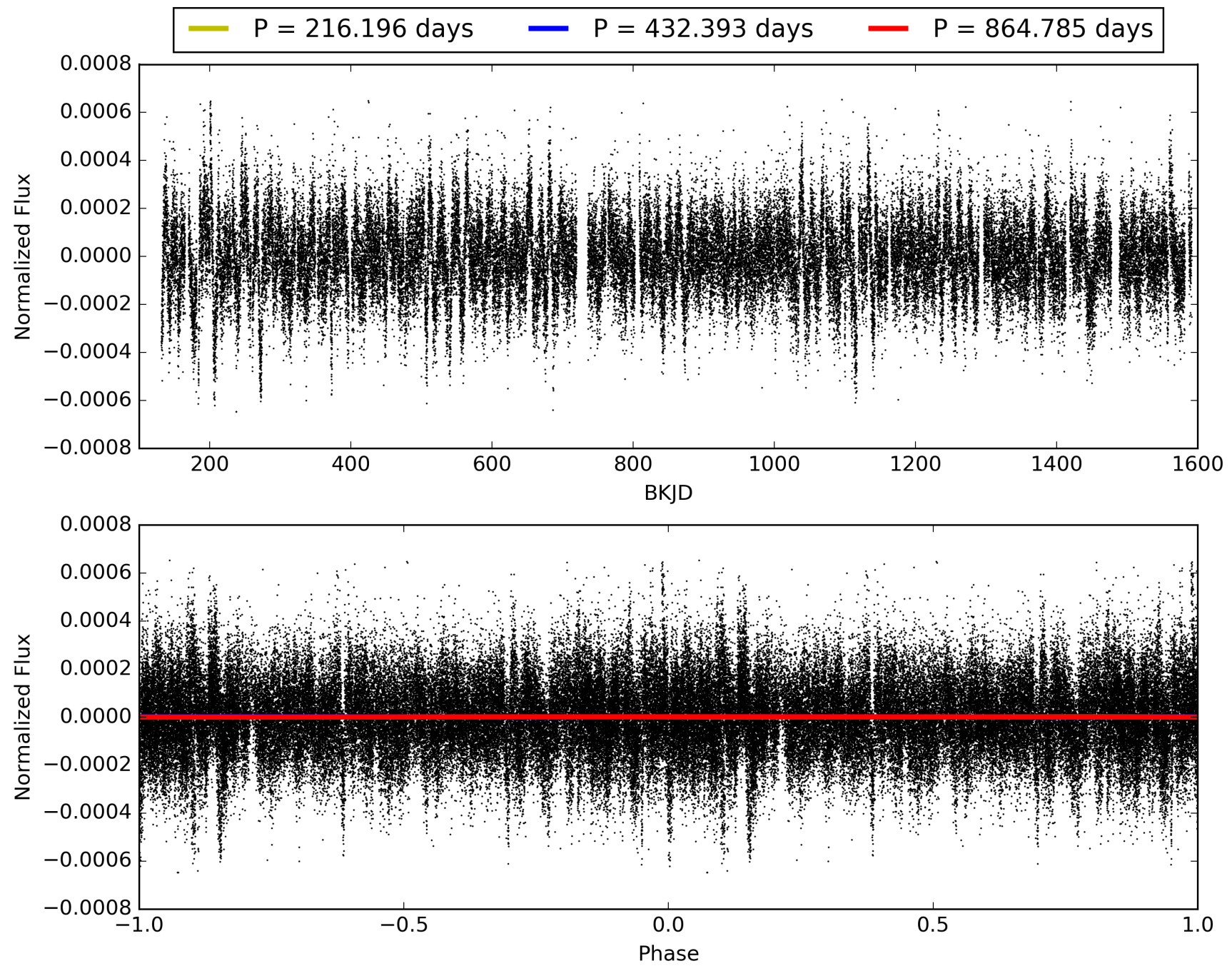
Software Revision: svn+ssh://murzim/repo/soc/tags/release/9.3.42@60958 -- Date Generated: 31-Jan-2016 22:26:13 Z

This Data Validation Report Summary was produced in the Kepler Science Operations Center Pipeline at NASA Ames Research Center

TCE 007947574-01, PDC Light Curves

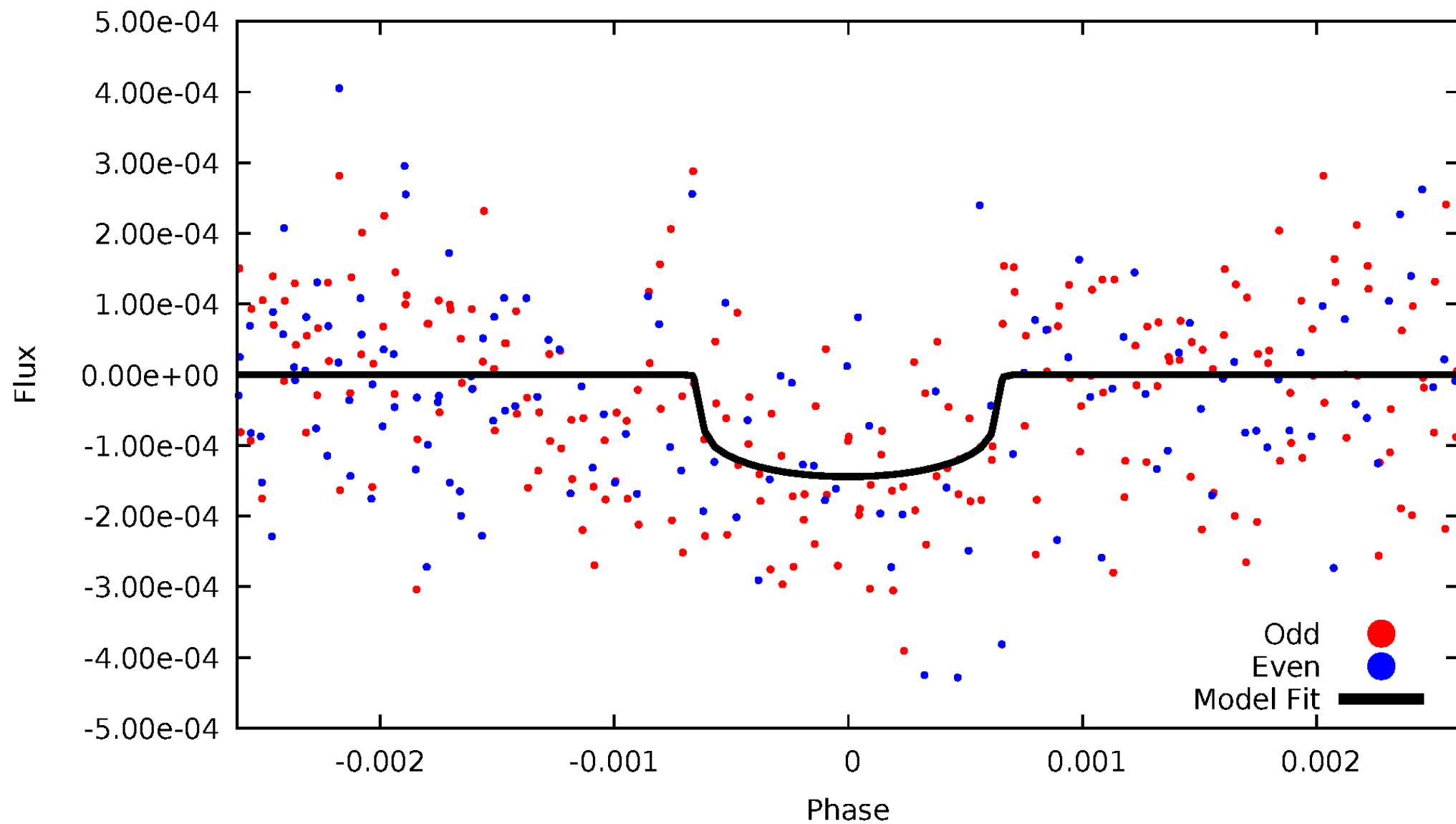


TCE 007947574-01



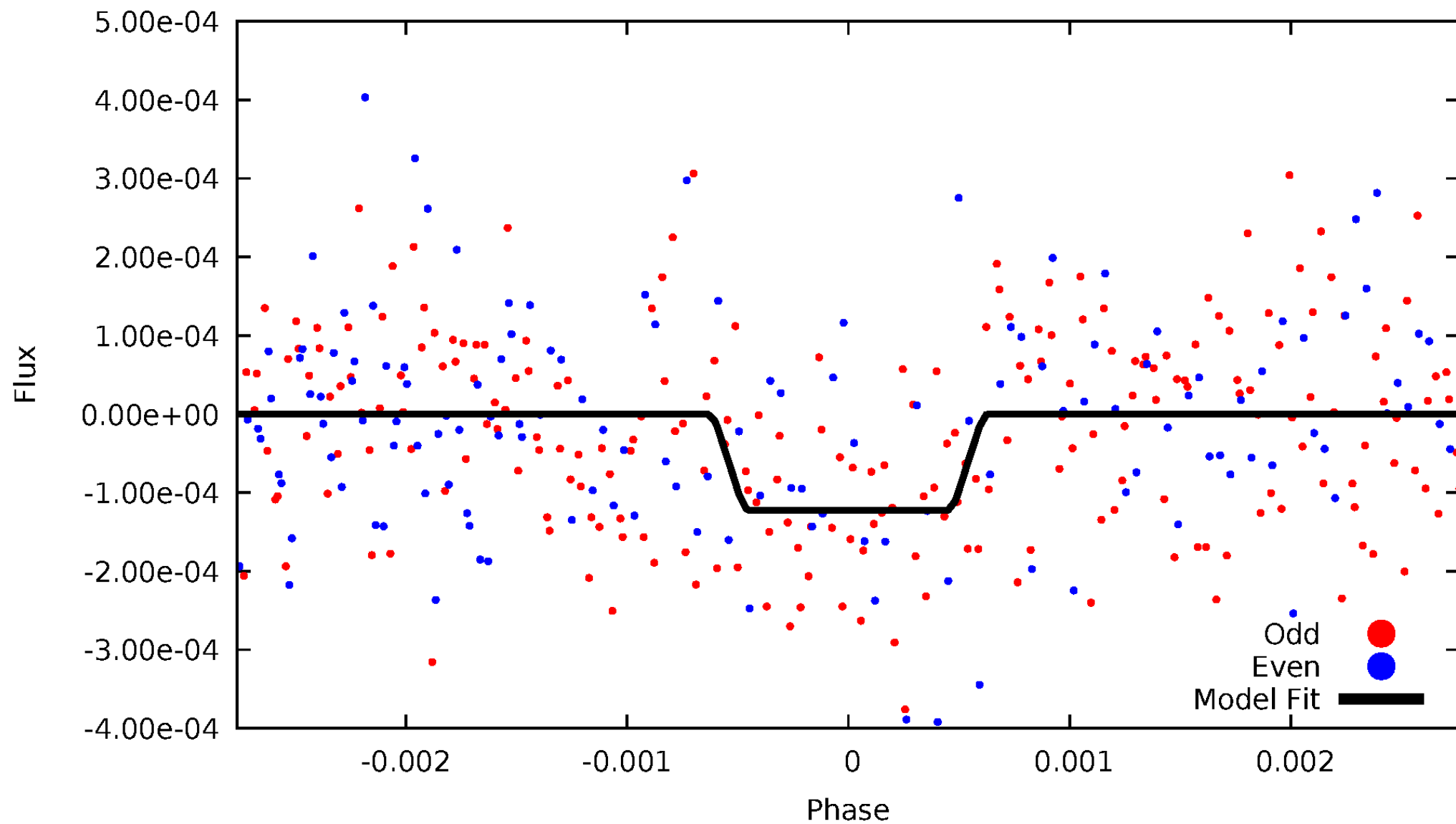
DV Odd/Even

TCE 007947574-01

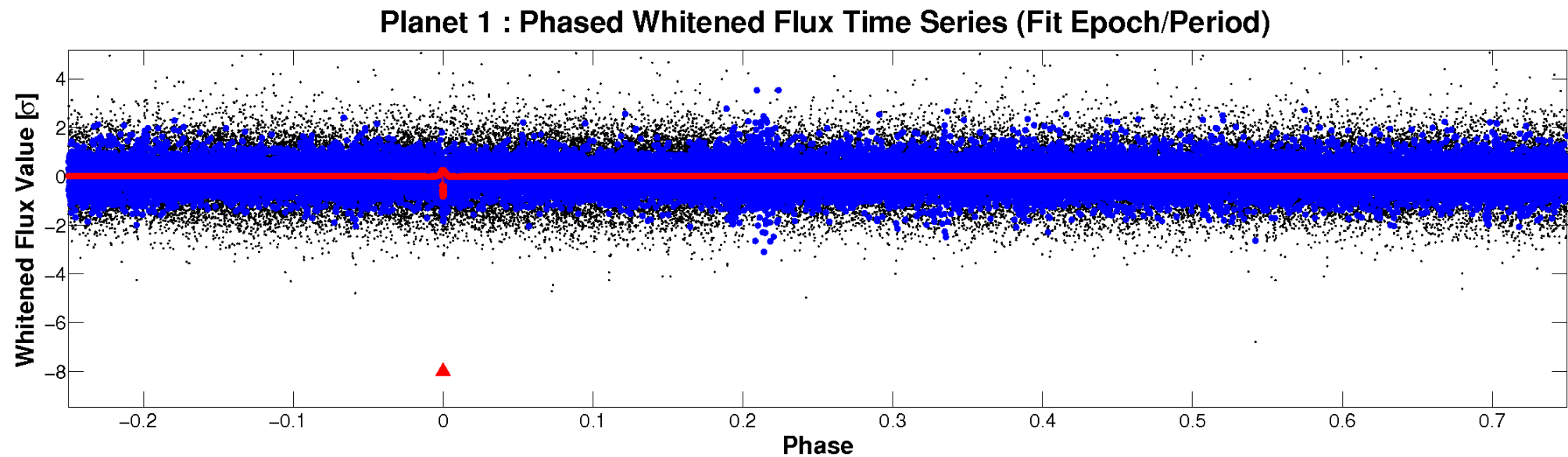
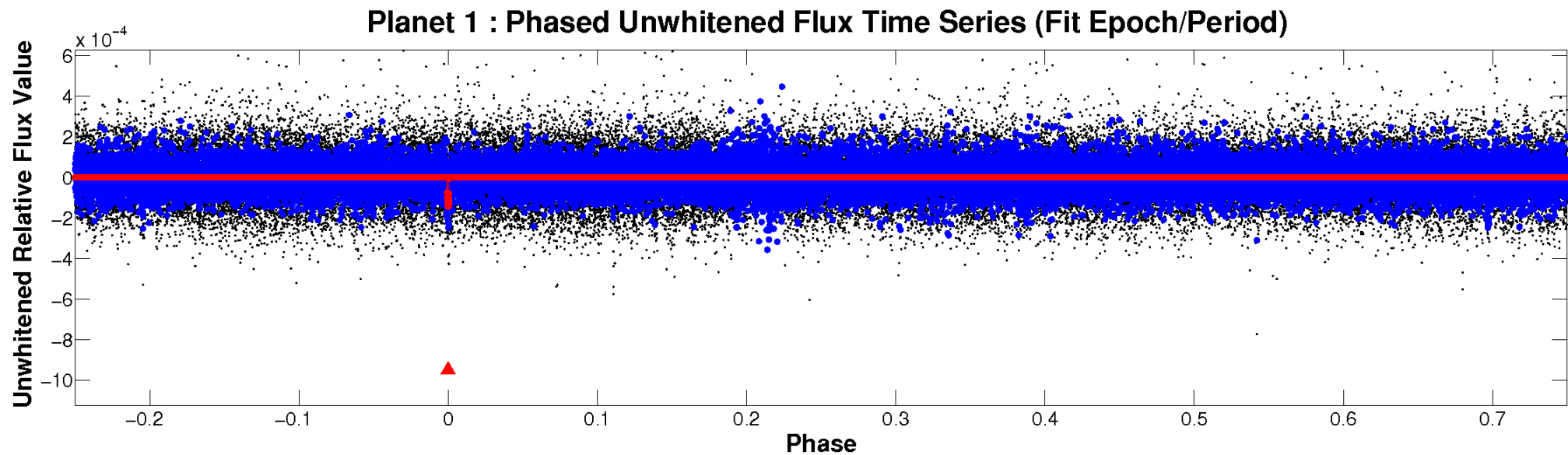


ALT Odd/Even

TCE 007947574-01

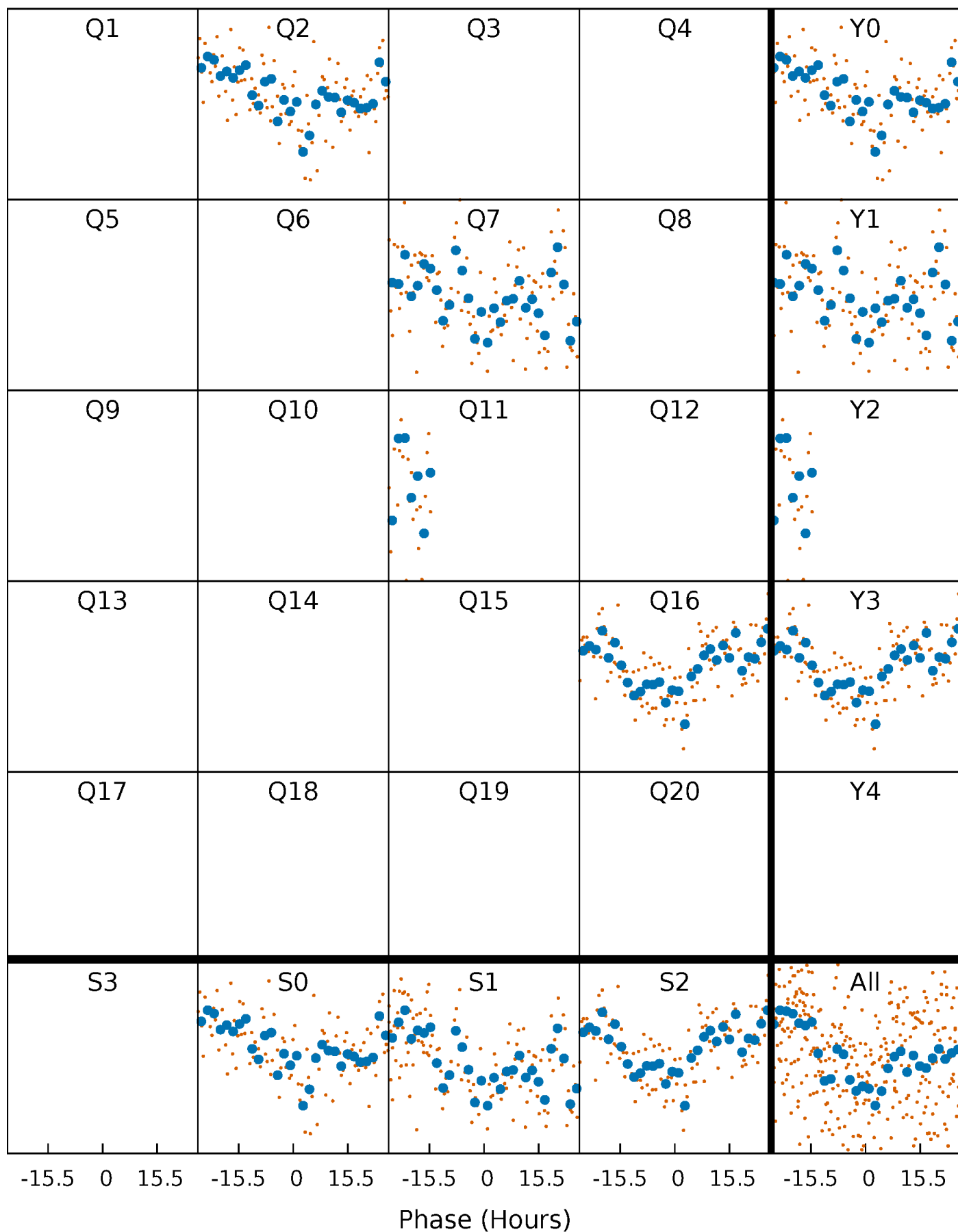


Non-Whitened Vs. Whitened Light Curve



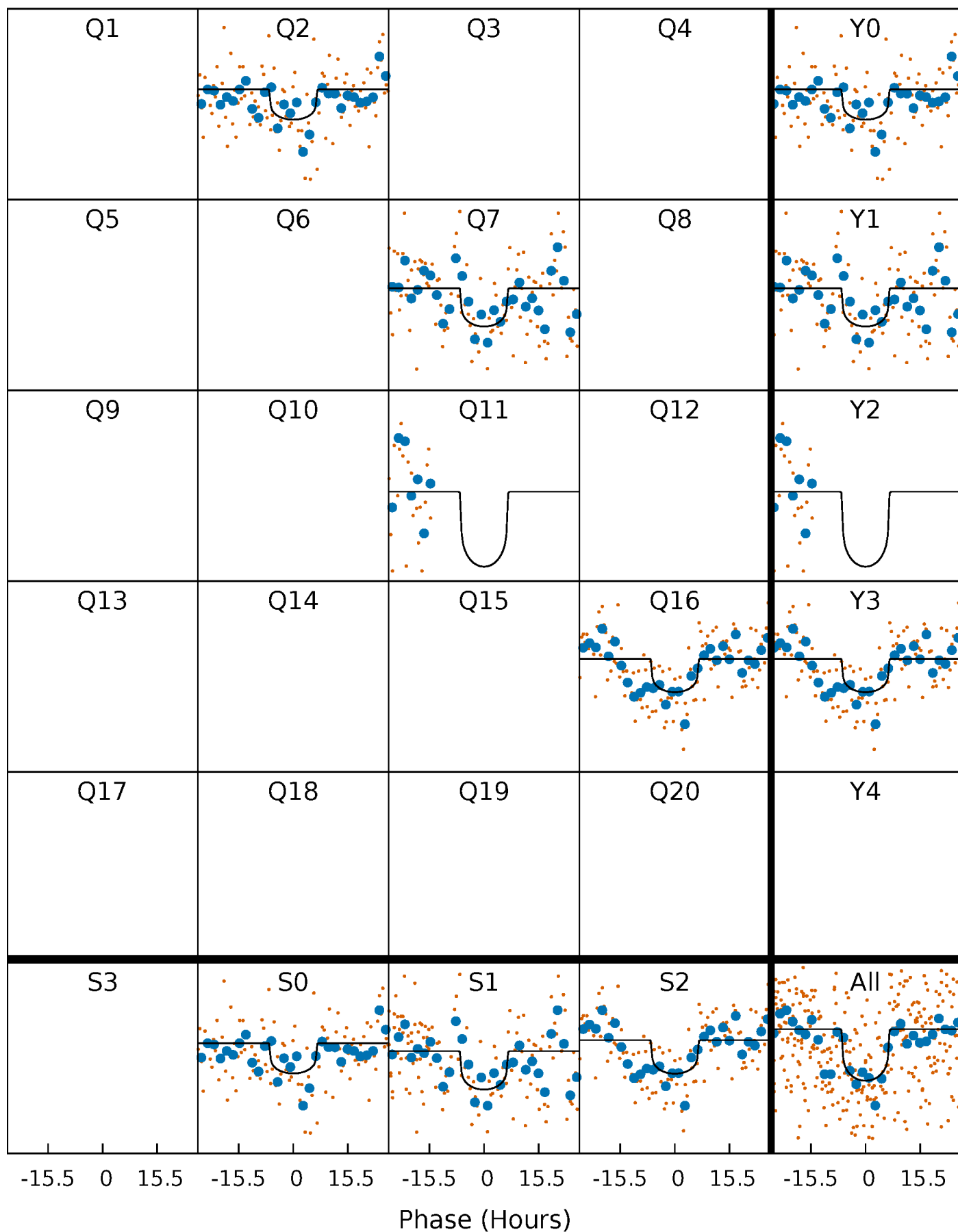
PDC Quarter-Phased Transit Curves

TCE 007947574-01 P=432.392667 Days $T_0=205.833588$ (BKJD)



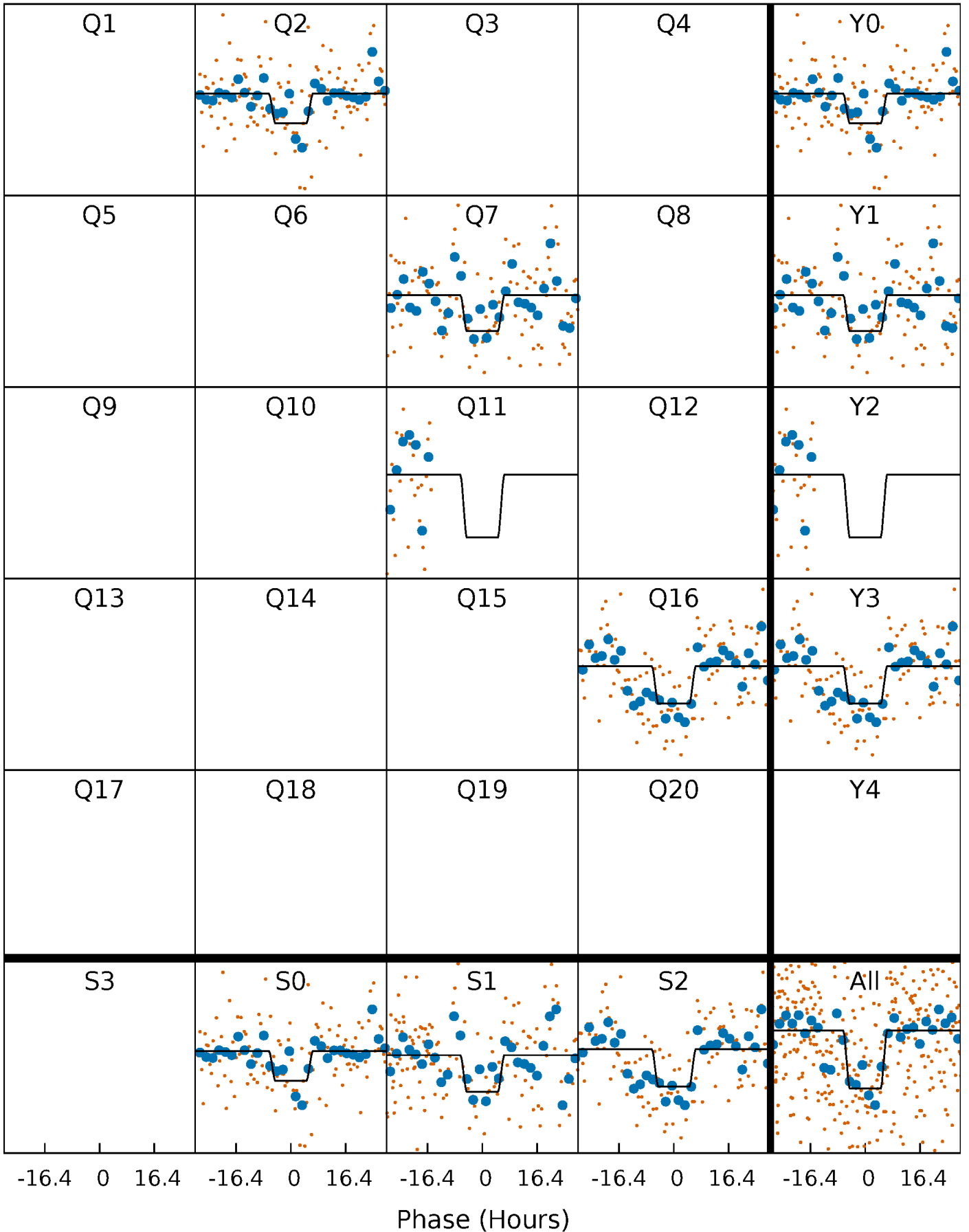
DV Quarter-Phased Transit Curves

TCE 007947574-01 P=432.392667 Days $T_0=205.833588$ (BKJD)



Alt. Detrend Quarter-Phased Transit Curves

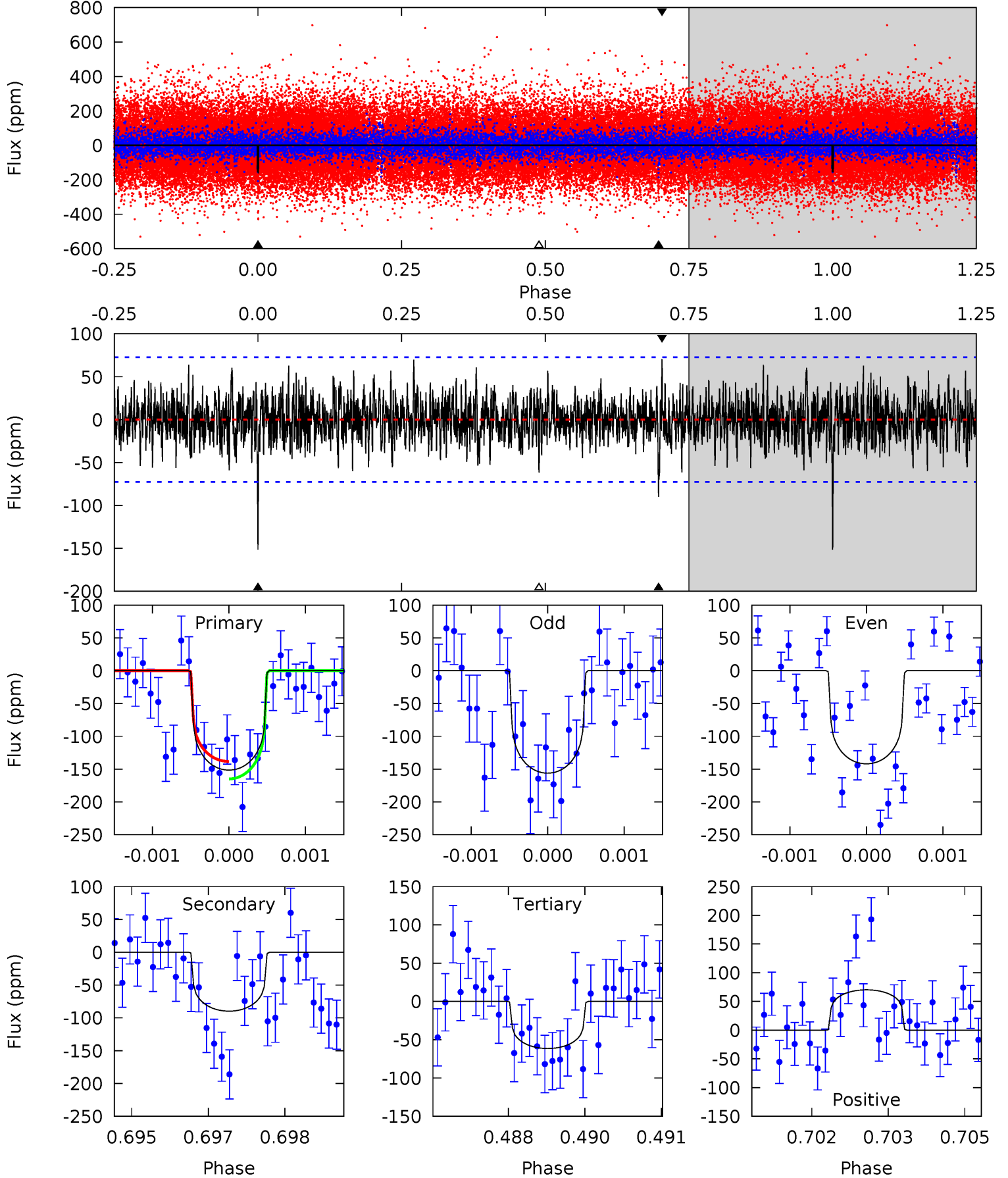
TCE 007947574-01 P=432.380941 Days $T_0=205.860878$ (BKJD)



DV Model-Shift Uniqueness Test

007947574-01, P = 432.392667 Days, E = 205.833588 Days

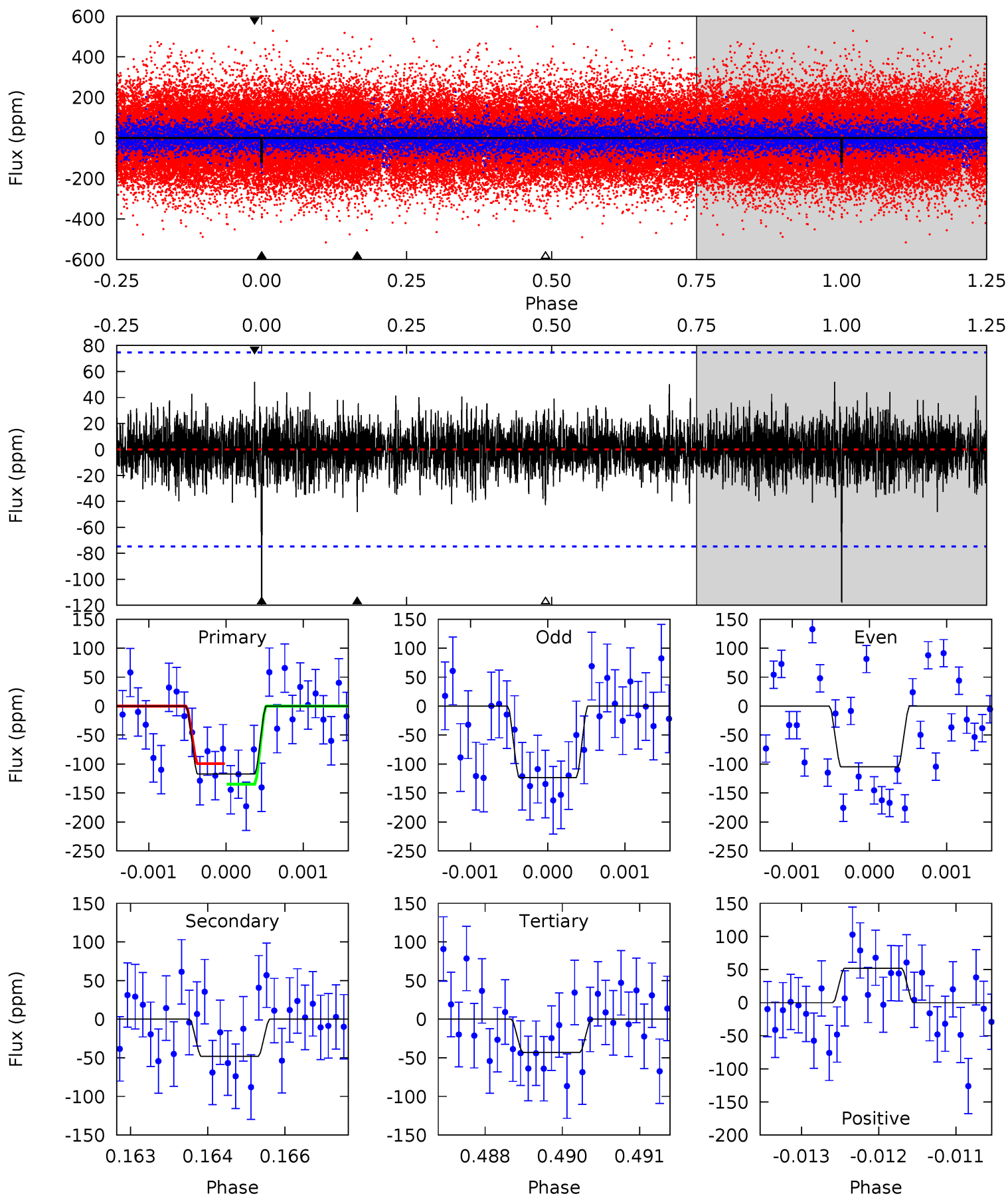
Pri	Sec	Ter	Pos	FA ₁	FA ₂	F _{Red}	Pri-Ter	Pri-Pos	Sec-Ter	Sec-Pos	Odd-Evn	DMM	Shape	TAT
11.3	6.68	4.57	5.22	5.40	3.21	1.43	6.70	6.05	2.11	1.46	0.50	1.06	0.32	0.99



Alt Model-Shift Uniqueness Test

007947574-01, P = 432.380941 Days, E = 205.860878 Days

Pri	Sec	Ter	Pos	FA ₁	FA ₂	F _{Red}	Pri-Ter	Pri-Pos	Sec-Ter	Sec-Pos	Odd-Evn	DMM	Shape	TAT
8.51	3.49	3.12	3.78	5.42	3.23	0.94	5.39	4.74	0.37	-0.29	0.63	1.11	0.31	1.29



Stellar Parameters For KIC 007947574

	$T_{\text{eff}}(K)$	$\log(g)$	[Fe/H]	R (R_{\odot})	$M(M_{\odot})$	p_{\star} ($\text{g}\cdot\text{cm}^{-3}$)
	5776^{+139}_{-156}	$4.512^{+0.042}_{-0.168}$	$0.210^{+0.200}_{-0.350}$	$0.950^{+0.210}_{-0.090}$	$1.068^{+0.079}_{-0.136}$	$1.757^{+0.386}_{-0.793}$
	+2%/-3%	+1%/-4%	+95%/-167%	+22%/-9%	+7%/-13%	+22%/-45%
Source	PHO1	KIC0	KIC0	DSEP		

KIC = Kepler Input Catalog; PHO = Photometry; SPE = Spectroscopy; AST = Asteroseismology
 TRA = Transits; DESP = Dartmouth Models; MULT = Multiple Models

Secondary Eclipse Parameters for KIC 007947574-01 / KOI

Detrend	Depth (ppm)	R_p (R_{\oplus})	T_{max} (K)	T_{obs} (K)	A_{obs}
DV	-90 ± 13	$1.27^{+0.65}_{-0.59}$	330^{+20}_{-14}	5214^{+1836}_{-834}	39302^{+94538}_{-22717}
Alt.	-48 ± 14	$1.18^{+0.66}_{-0.57}$	331^{+18}_{-14}	4671^{+1749}_{-716}	23035^{+71680}_{-13832}

T_{max} = Theoretical Maximum Planetary Temperature

T_{obs} = Observed Planetary Temperature (Assuming $A=0.3$)

A_{obs} = Observed Albedo (Assuming $T=0$)

If a secondary eclipse is present, the system is likely an EB if $T_{\text{obs}} \gg T_{\text{max}}$ AND $A_{\text{obs}} \gg 1.0$

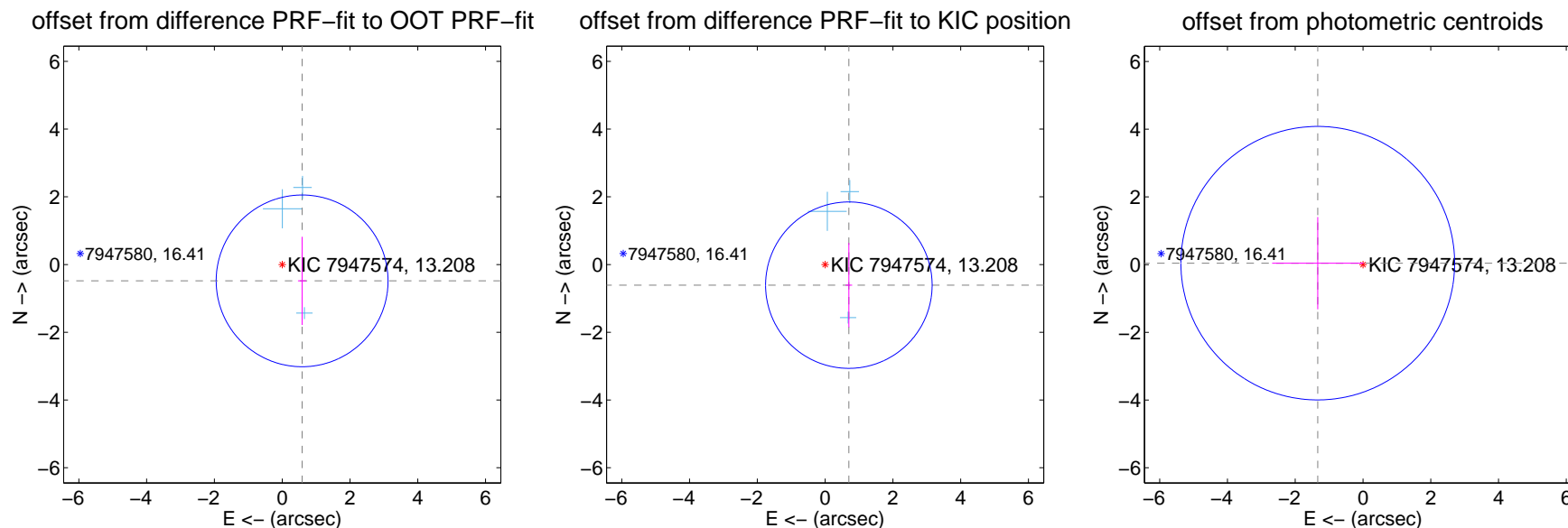
DV Centroid Data

Supplemental centroid analysis for 007947574-01. Kepler magnitude: 13.21. Transit SNR 6.73

There are 3 quarters with good PRF difference image offsets

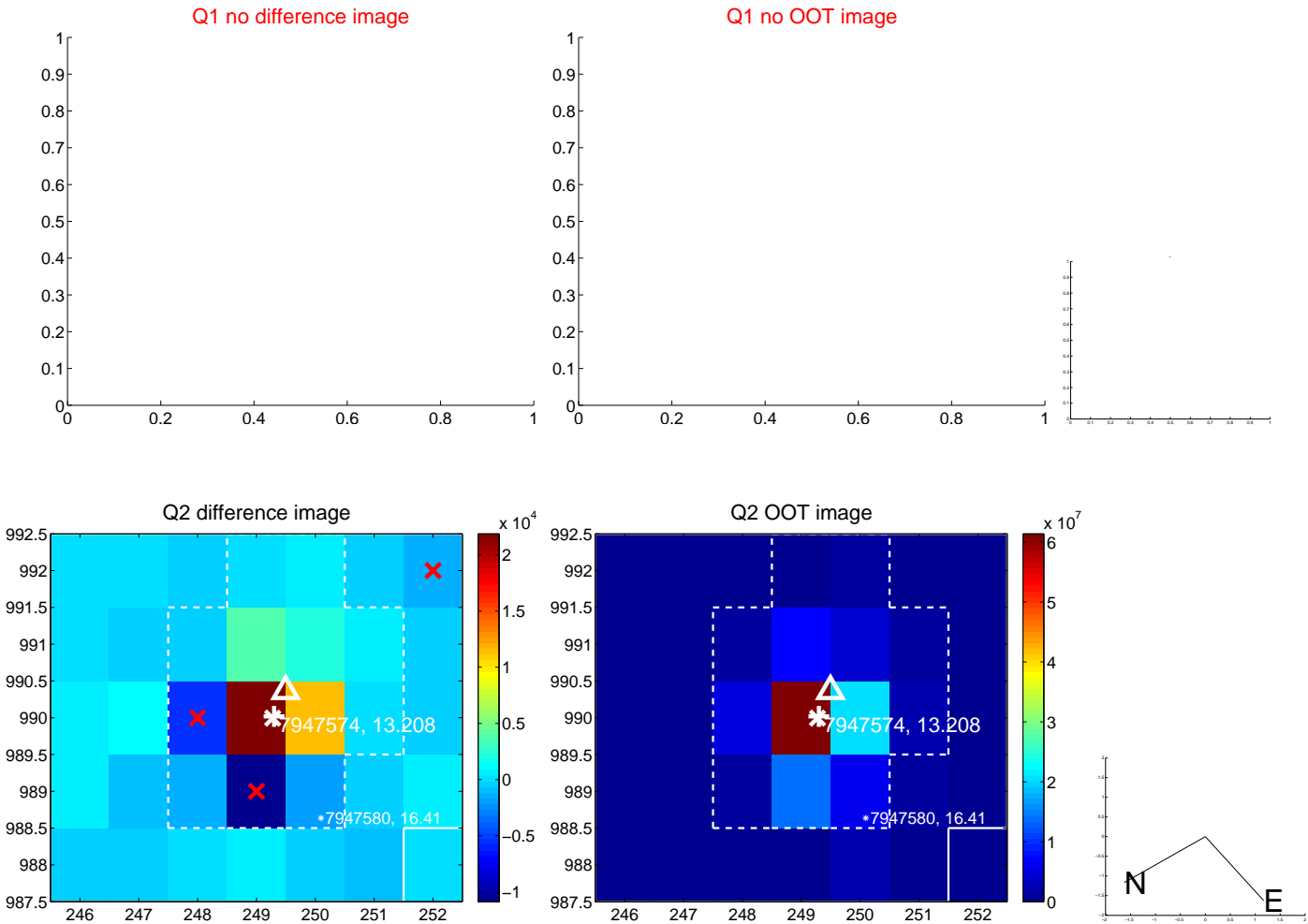
The direct PRF centroid is offset from the target star catalog position by about 0.18 arcsec

	Distance in arcsec	Distance / σ	Δ RA	Δ Dec
PRF-fit source offset from OOT	0.760 ± 0.845	0.90	-0.587 ± 0.122	-0.482 ± 1.301
PRF-fit source offset from KIC position	0.928 ± 0.819	1.13	-0.700 ± 0.097	-0.608 ± 1.244
photometric centroid source offset	1.34 ± 1.35	0.99	1.33 ± 1.35	0.04 ± 1.36



Centroid source offsets from the target star reconstructed from PRF and photometric centroids. Sky blue crosses: good quarterly centroid offsets; Vermillion crosses: bad quarterly centroid offsets; magenta cross: average over quarters. Length of the crosses: one- σ uncertainty. Blue circle: three- σ . Red *: target star. Blue *: Other stars. Text next to a star gives its KIC ID and kepmag. KIC IDs > 15,000,000 are from the UKIRT catalog.

white \times : KIC target position; $+$: OOT centroid; \triangle : difference centroid. red \times : large negative pixel value.



white \times : KIC target position; $+$: OOT centroid; \triangle : difference centroid. red \times : large negative pixel value.

Q5 no difference image



Q5 no OOT image



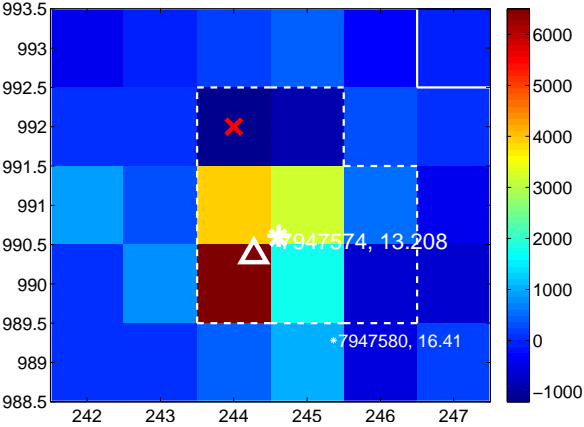
Q6 no difference image



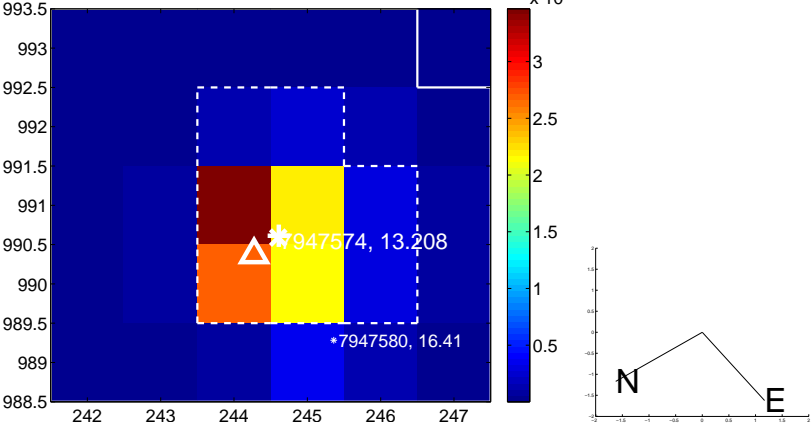
Q6 no OOT image



Q7 difference image



Q7 OOT image



Q8 no difference image



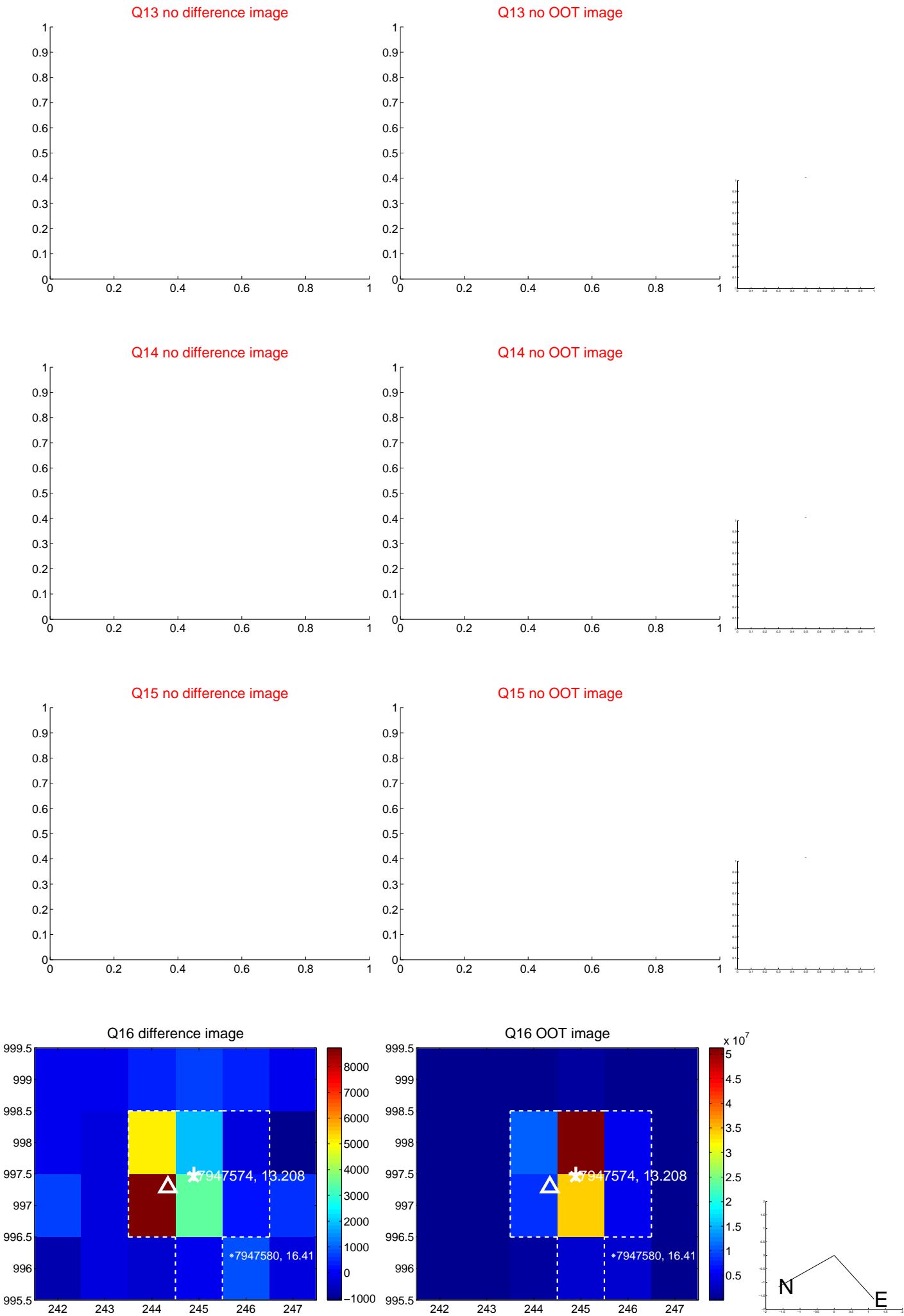
Q8 no OOT image



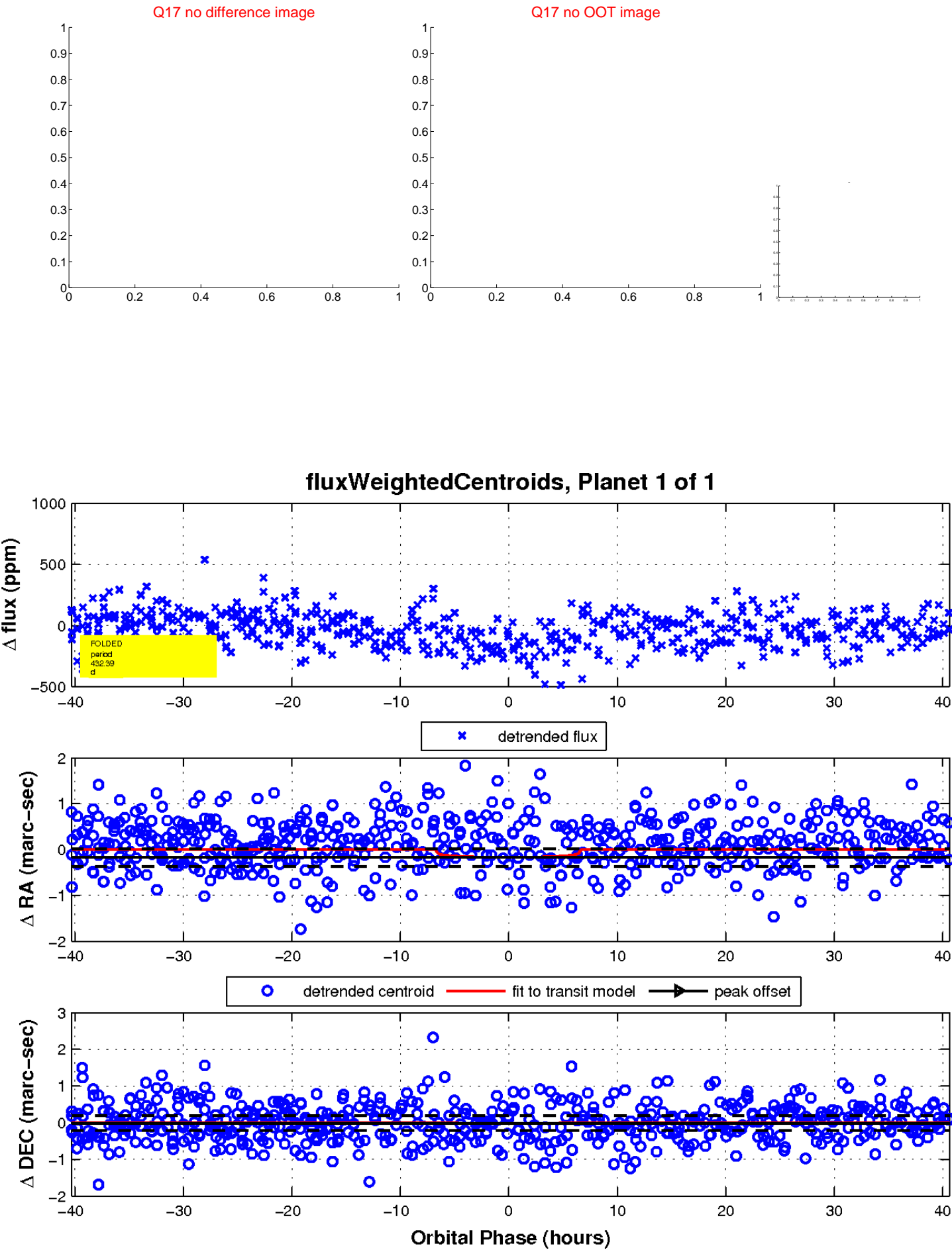
white \times : KIC target position; $+$: OOT centroid; \triangle : difference centroid. red \times : large negative pixel value.



white \times : KIC target position; $+$: OOT centroid; \triangle : difference centroid. red \times : large negative pixel value.



white \times : KIC target position; $+$: OOT centroid; \triangle : difference centroid. red \times : large negative pixel value.



UKIRT Image

