

KIC 007700894

Q1-17 DR25 TCE Parameters

TCE	Run Type	KOI?	Period (Days)	Epoch (BKJD)	Depth (ppm)	Duration (Hours)	MES	SNR	R_{\star} (R_{\odot})	T_{\star} (K)	R_p (R_{\oplus})	S_p (S_{\oplus})
007700894-01	OBS	No	337.143251	373.975348	201.0	16.317	7.5	7.3	0.68	5350	1.10	0.46

Robovetter Results

TCE	Run Type	Disp	Score	N	S	C	E	Comments
007700894-01	OBS	FP	0.00	1	0	1	0	INDIV_TRANS_MARSHALL—MOD_NONUNIQ_ALT—MOD_POS_ALT—CENT_FEW_DIFFS—HALO_GHOST

Notes: OBS = Observed. INJ = Injected. INV = Inverted. SCR = Scrambled.

N = Not Transit-Like. S = Stellar Eclipse. C = Centroid Offset. E = Ephemeris Match.

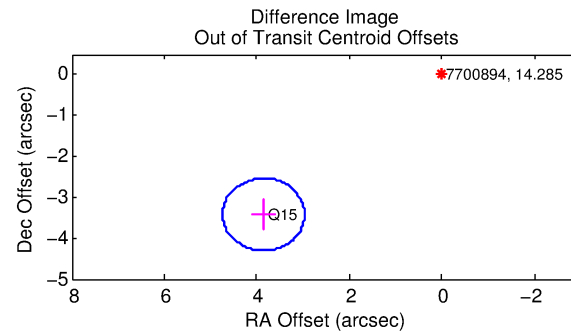
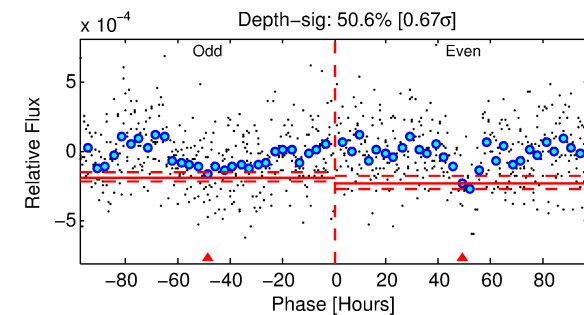
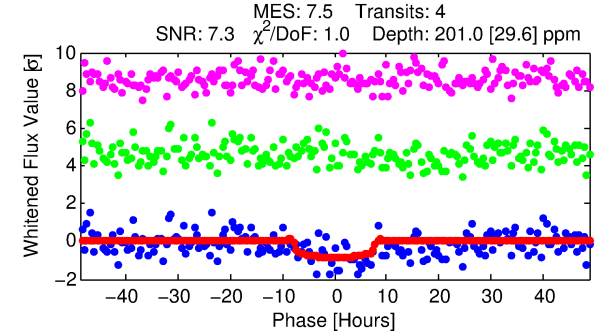
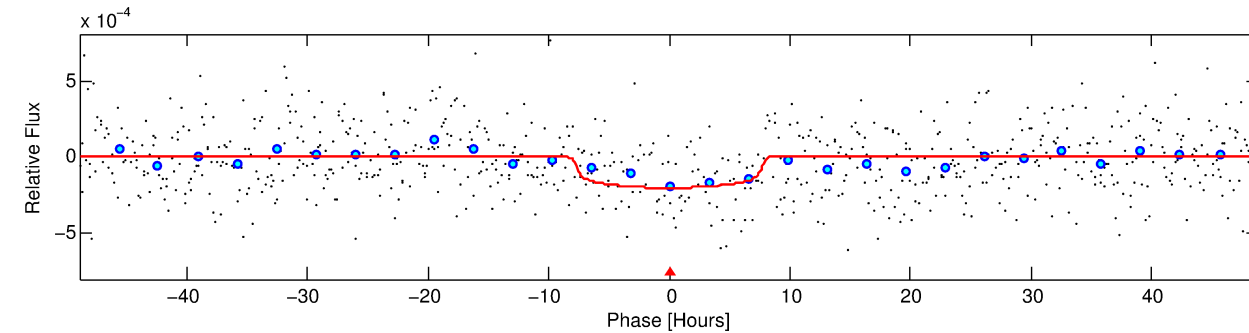
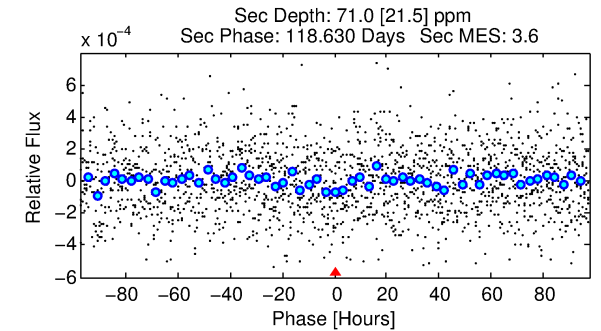
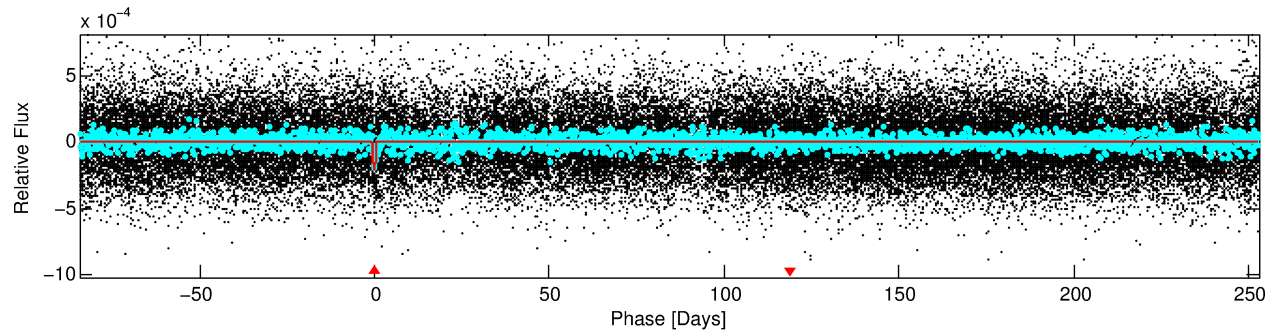
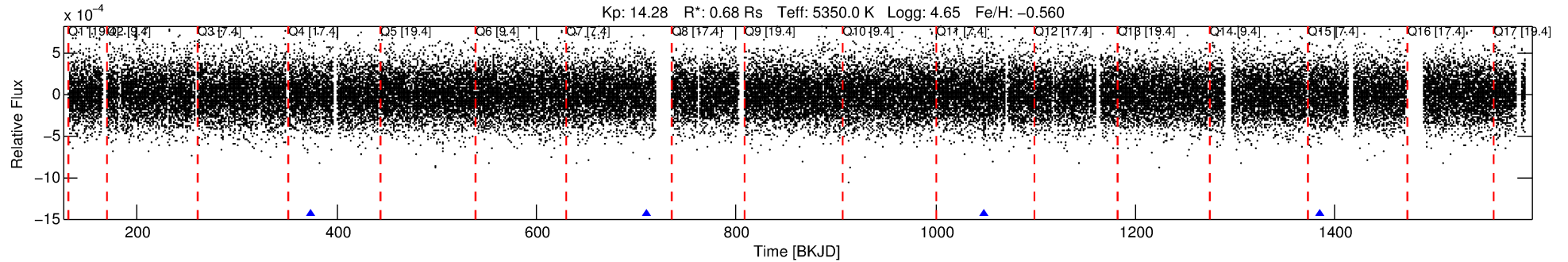
See http://exoplanetarchive.ipac.caltech.edu/docs/API_kepcandidate_columns.html#proj_disp_col for comment definitions.

Ephemeris Match Information For 007700894-01

No Significant Match Found

DV One-Page Summary

KIC: 7700894 Candidate: 1 of 1 Period: 337.143 d



DV Fit Results:

Period = 337.14325 [0.01456] d
Epoch = 373.9753 [0.0276] BKJD
Rp/R* = 0.0149 [0.0041]
a/R* = 87.16 [100.65]
b = 0.85 [0.38]
Seff = 0.46 [0.09]
Teq = 210 [11] K
Rp = 1.10 [0.34] Re
a = 0.8591 [0.1046] AU
Ag = 23773.44 [15359.12] [1.55σ]
Teffp = 4025 [636] K [6.00σ]

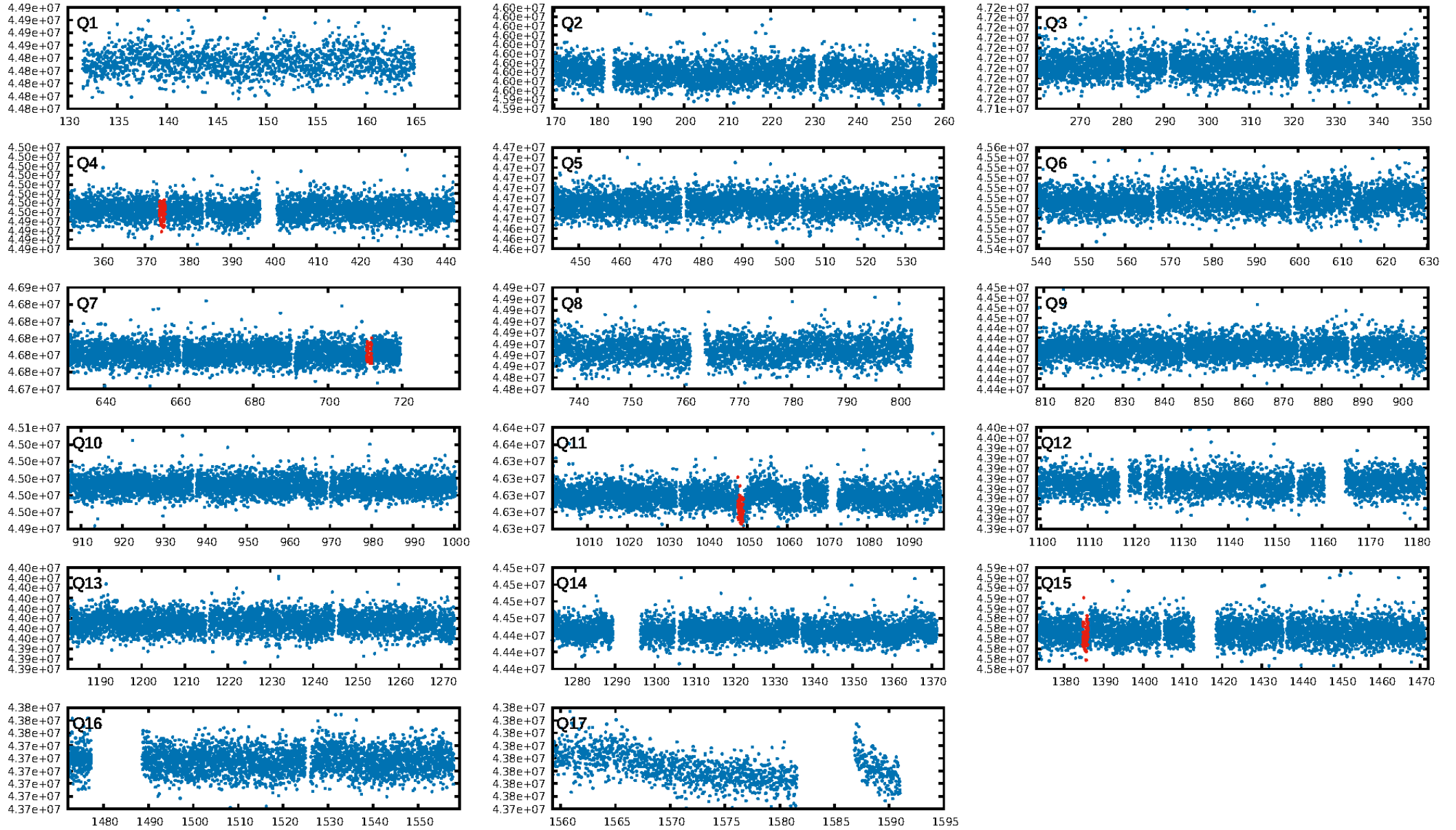
DV Diagnostic Results:

ShortPeriod-sig: N/A
LongPeriod-sig: N/A
ModelChiSquare2-sig: 3.7%
ModelChiSquareGof-sig: 100.0%
Bootstrap-pfa: 4.63e-14
RollingBand-fgt: 1.00 [4/4]
GhostDiagnostic-chr: 0.00952
Centroid-sig: 20.1%
Centroid-so: 2.548 arcsec [1.26σ]
OotOffset-rm: 5.159 arcsec [17.48σ]
KicOffset-rm: 5.187 arcsec [17.42σ]
OotOffset-st: 0/1/0/0 [1]
KicOffset-st: 0/1/0/0 [1]
DiffImageQuality-fgm: 0.00 [0/1]
DiffImageOverlap-fno: 1.00 [2/2]

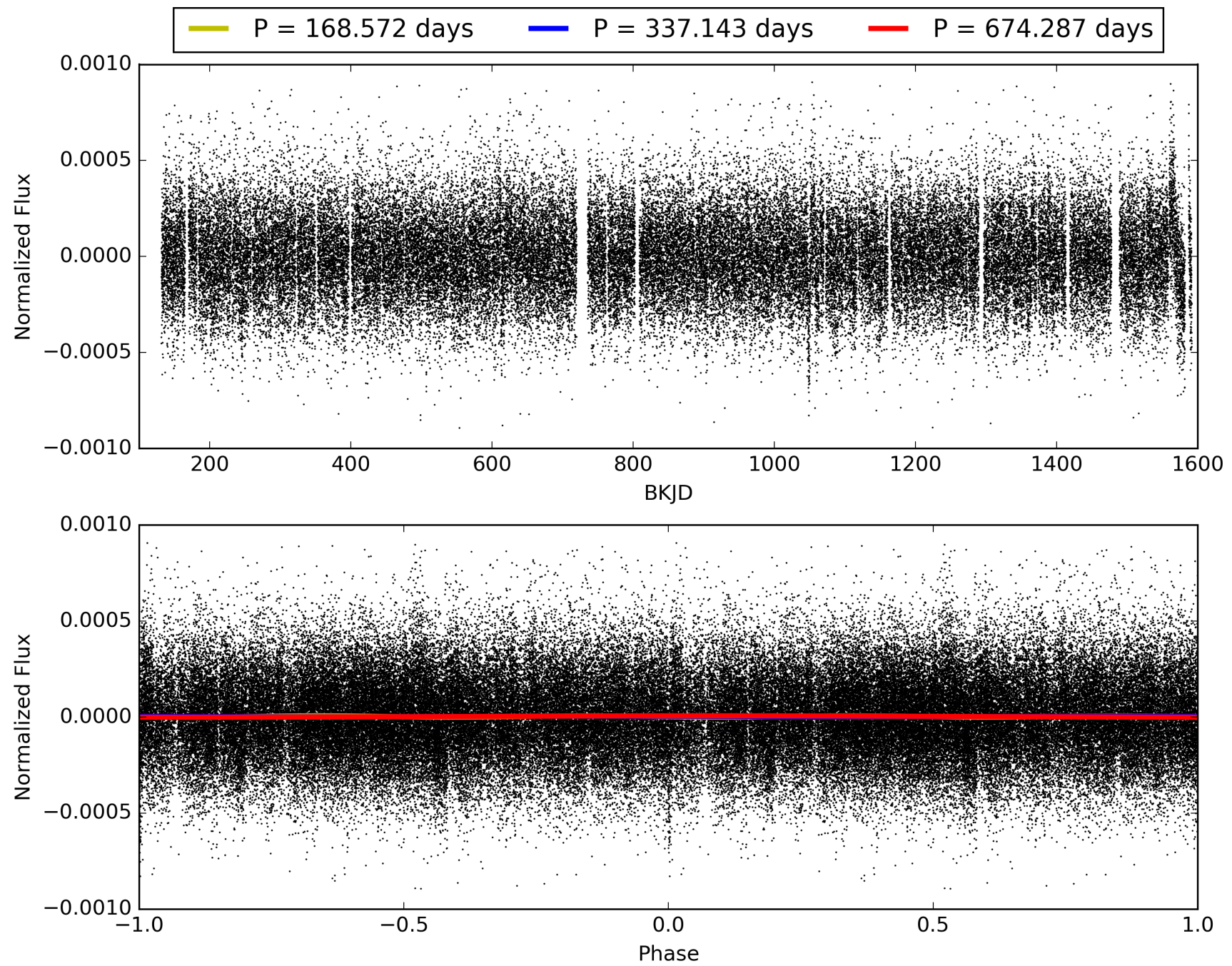
Software Revision: svn-ssh://murzim/repo/soc/tags/release/9.3.42@60958 -- Date Generated: 30-Jan-2016 20:27:56 Z

This Data Validation Report Summary was produced in the Kepler Science Operations Center Pipeline at NASA Ames Research Center

TCE 007700894-01, PDC Light Curves

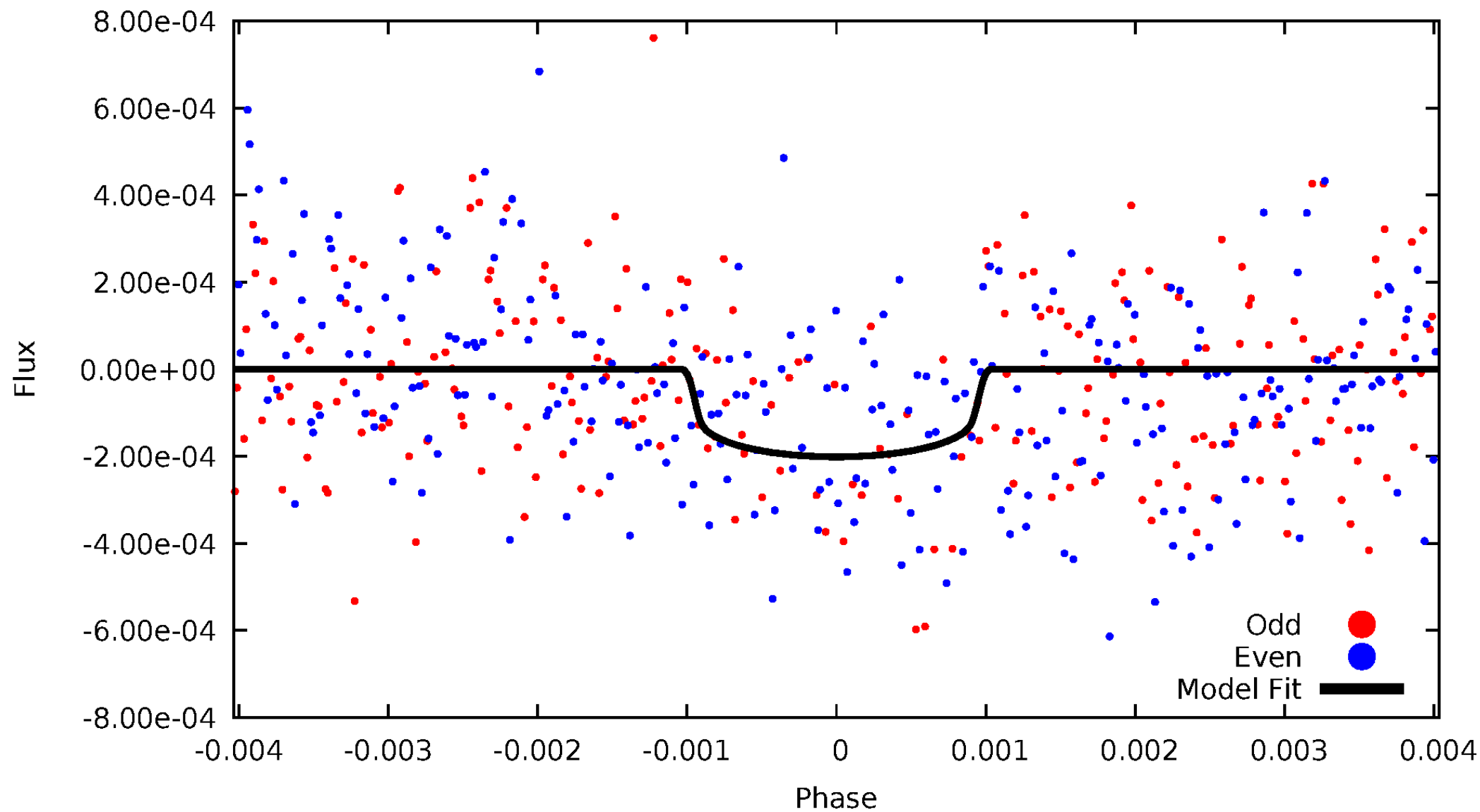


TCE 007700894-01



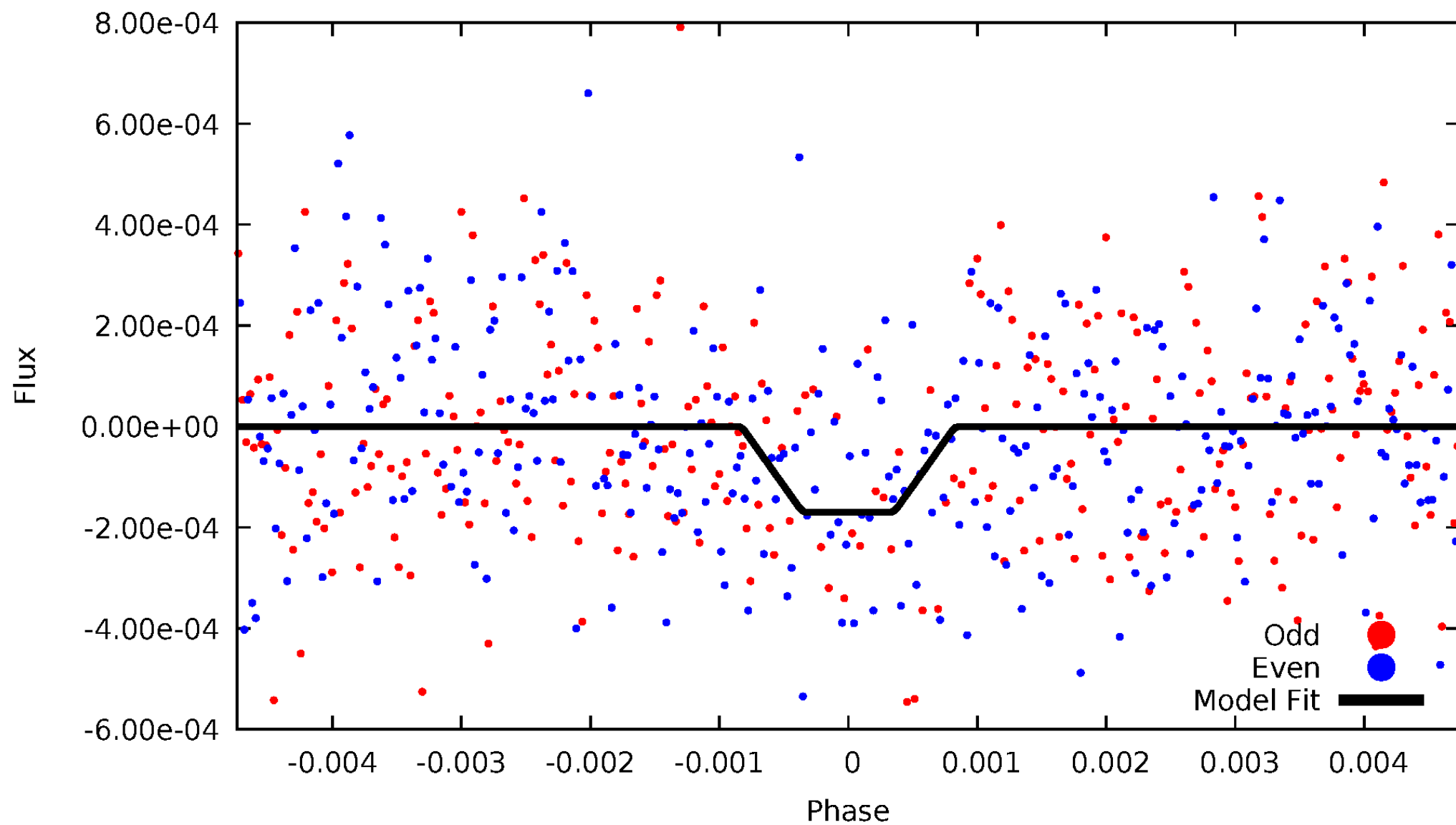
DV Odd/Even

TCE 007700894-01



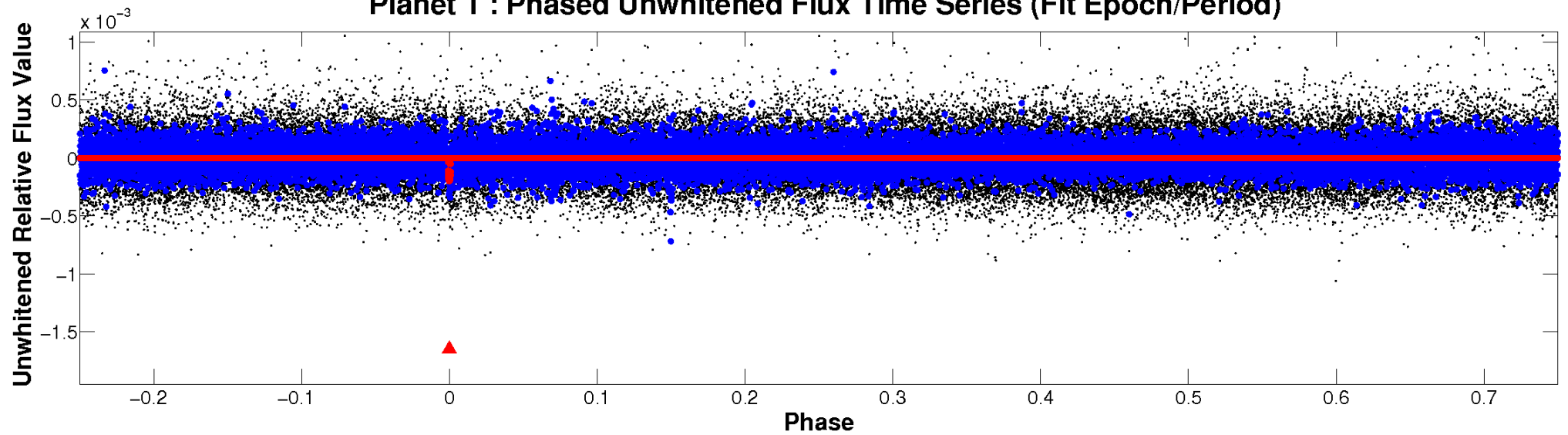
ALT Odd/Even

TCE 007700894-01

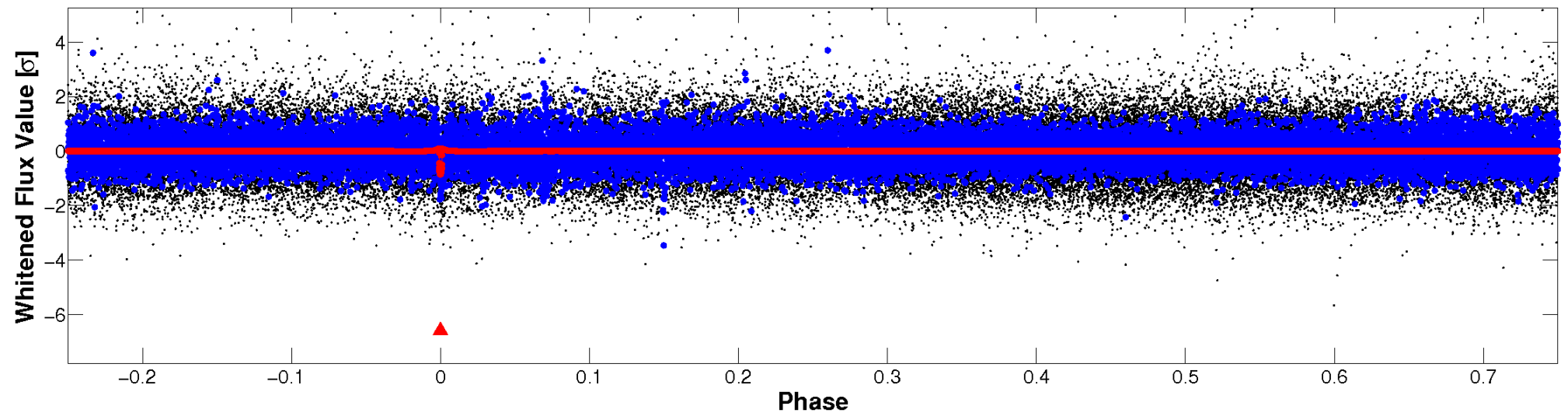


Non-Whitened Vs. Whitened Light Curve

Planet 1 : Phased Unwhitened Flux Time Series (Fit Epoch/Period)

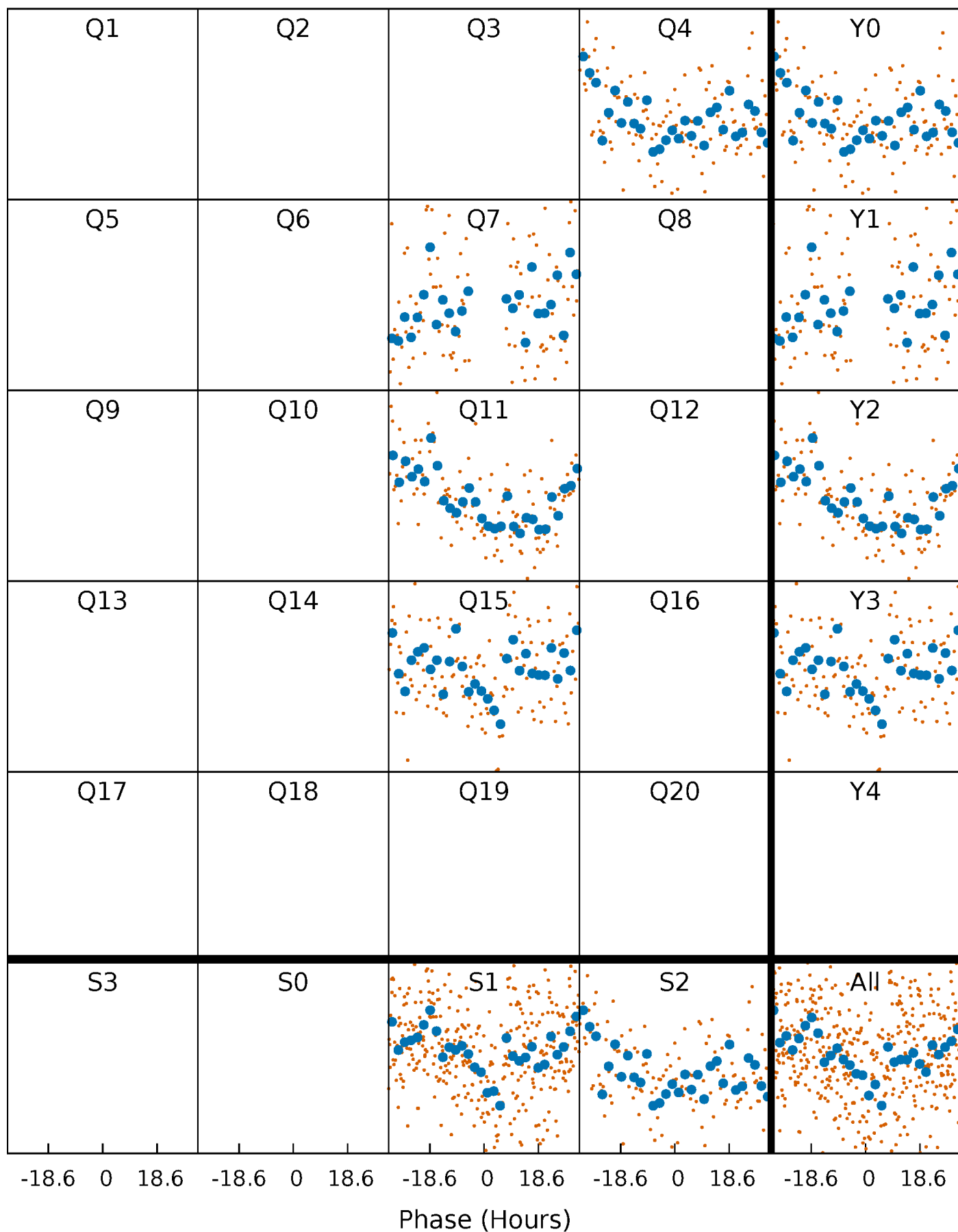


Planet 1 : Phased Whitened Flux Time Series (Fit Epoch/Period)



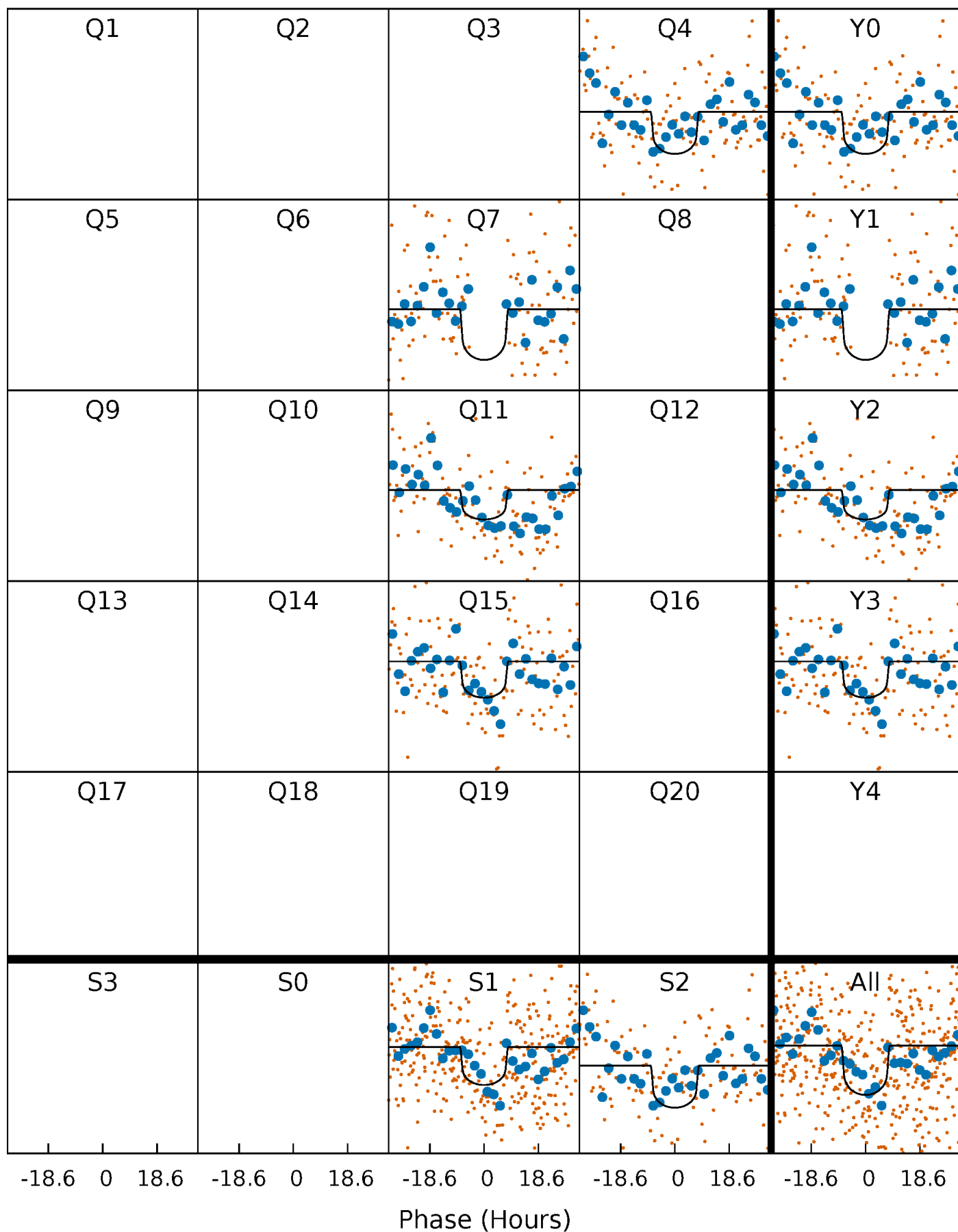
PDC Quarter-Phased Transit Curves

TCE 007700894-01 P=337.143251 Days $T_0=373.975348$ (BKJD)



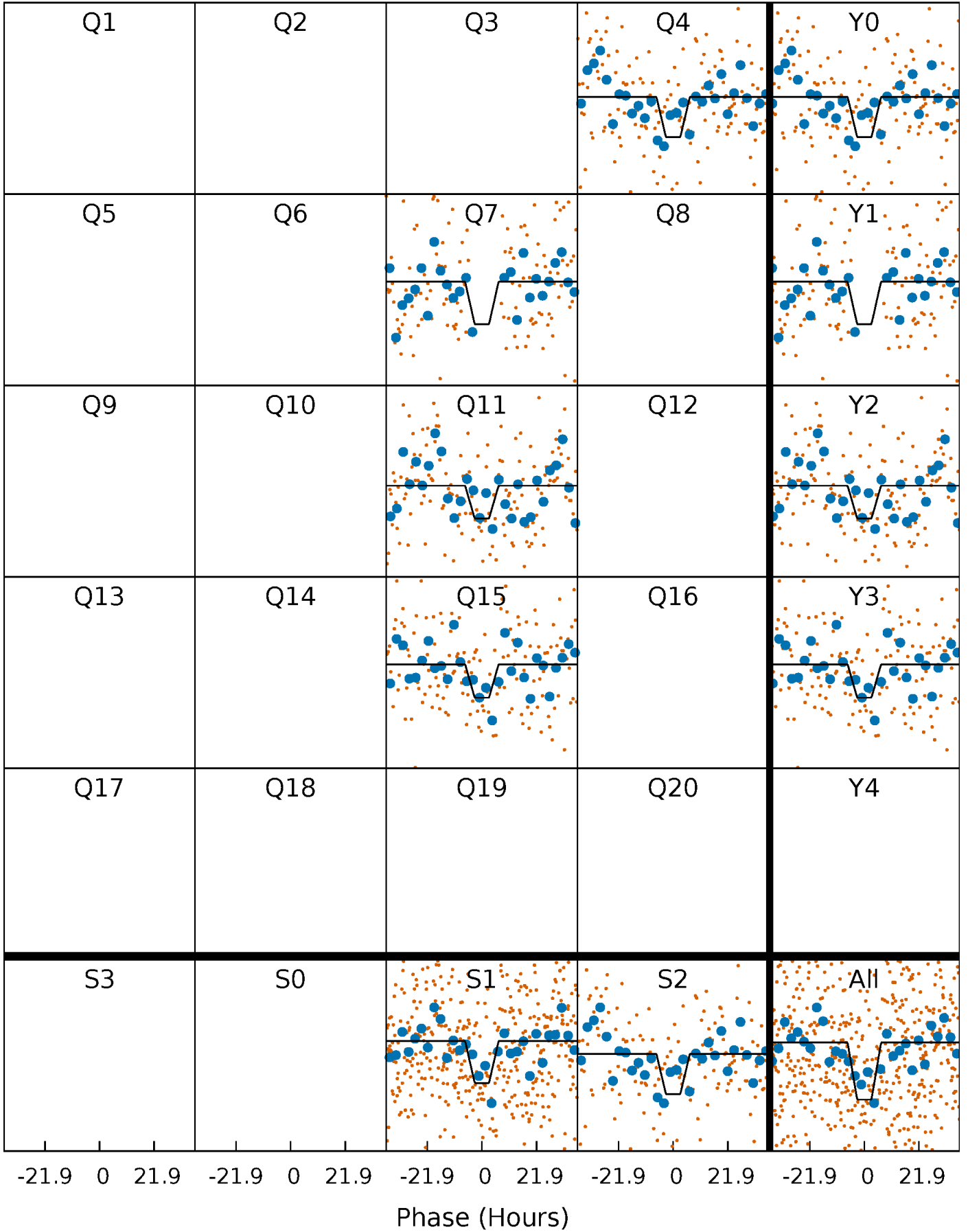
DV Quarter-Phased Transit Curves

TCE 007700894-01 P=337.143251 Days $T_0=373.975348$ (BKJD)



Alt. Detrend Quarter-Phased Transit Curves

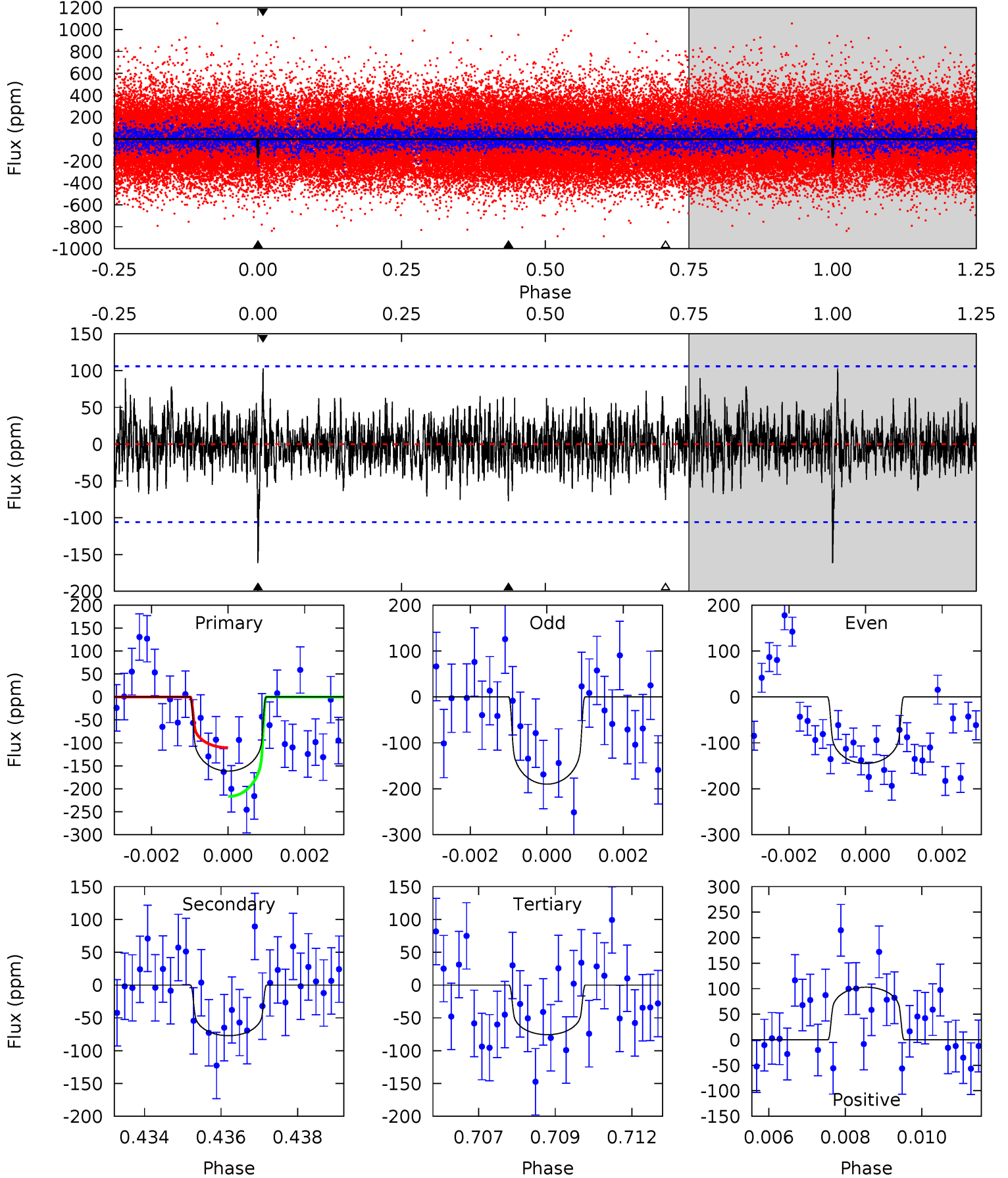
TCE 007700894-01 P=337.160551 Days $T_0=373.950150$ (BKJD)



DV Model-Shift Uniqueness Test

007700894-01, P = 337.143251 Days, E = 36.832097 Days

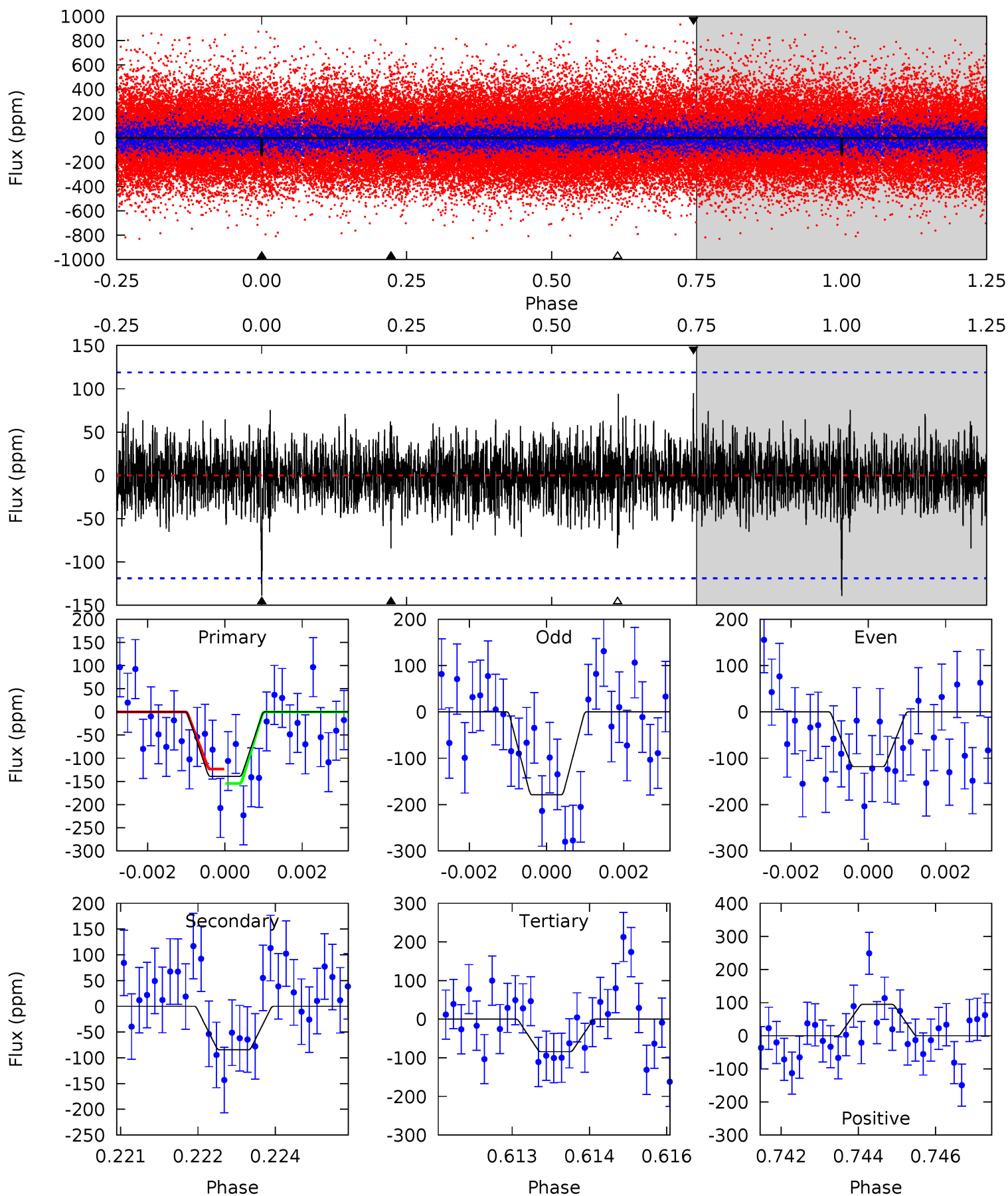
Pri	Sec	Ter	Pos	FA ₁	FA ₂	F _{Red}	Pri-Ter	Pri-Pos	Sec-Ter	Sec-Pos	Odd-Evn	DMM	Shape	TAT
8.11	3.87	3.80	5.17	5.32	3.08	1.20	4.31	2.94	0.08	-1.30	1.11	0.83	0.39	2.68



Alt Model-Shift Uniqueness Test

007700894-01, P = 337.160551 Days, E = 36.789599 Days

Pri	Sec	Ter	Pos	FA ₁	FA ₂	F _{Red}	Pri-Ter	Pri-Pos	Sec-Ter	Sec-Pos	Odd-Evn	DMM	Shape	TAT
6.26	3.80	3.79	4.26	5.36	3.14	1.06	2.48	2.00	0.01	-0.47	1.33	1.10	0.41	0.70



Stellar Parameters For KIC 007700894

	$T_{\text{eff}}(K)$	$\log(g)$	[Fe/H]	R (R_{\odot})	$M(M_{\odot})$	p_{\star} ($\text{g}\cdot\text{cm}^{-3}$)
	5350^{+144}_{-144}	$4.647^{+0.030}_{-0.090}$	$-0.560^{+0.300}_{-0.300}$	$0.678^{+0.102}_{-0.041}$	$0.758^{+0.072}_{-0.072}$	$3.416^{+0.527}_{-0.970}$
	+3%/-3%	+1%/-2%	+54%/-54%	+15%/-6%	+9%/-9%	+15%/-28%
Source	PHO1	KIC0	KIC0	DSEP		

KIC = Kepler Input Catalog; PHO = Photometry; SPE = Spectroscopy; AST = Asteroseismology
 TRA = Transits; DESP = Dartmouth Models; MULT = Multiple Models

Secondary Eclipse Parameters for KIC 007700894-01 / KOI

Detrend	Depth (ppm)	R_p (R_{\oplus})	T_{max} (K)	T_{obs} (K)	A_{obs}
DV	-77 ± 20	$1.13^{+0.33}_{-0.32}$	297^{+11}_{-10}	4287^{+649}_{-430}	23675^{+24308}_{-10460}
Alt.	-84 ± 22	$1.00^{+0.33}_{-0.32}$	296^{+12}_{-11}	4593^{+801}_{-498}	33574^{+40371}_{-15100}

T_{max} = Theoretical Maximum Planetary Temperature

T_{obs} = Observed Planetary Temperature (Assuming $A=0.3$)

A_{obs} = Observed Albedo (Assuming $T=0$)

If a secondary eclipse is present, the system is likely an EB if $T_{\text{obs}} \gg T_{\text{max}}$ AND $A_{\text{obs}} \gg 1.0$

DV Centroid Data

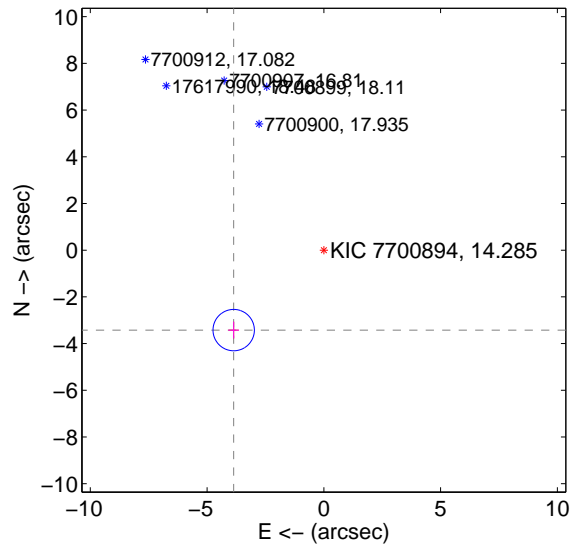
Supplemental centroid analysis for 007700894-01. Kepler magnitude: 14.29. Transit SNR 7.31

There are 0 quarters with good PRF difference image offsets

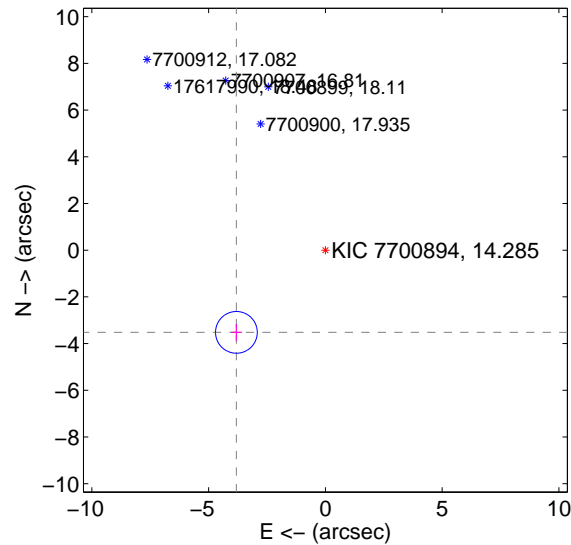
The direct PRF centroid is offset from the target star catalog position by about 0.11 arcsec

	Distance in arcsec	Distance / σ	Δ RA	Δ Dec
PRF-fit source offset from OOT	5.159 \pm 0.295	17.48	3.861 \pm 0.231	-3.423 \pm 0.361
PRF-fit source offset from KIC position	5.187 \pm 0.298	17.42	3.810 \pm 0.231	-3.520 \pm 0.361
photometric centroid source offset	2.55 \pm 2.03	1.26	2.45 \pm 2.00	0.71 \pm 2.30

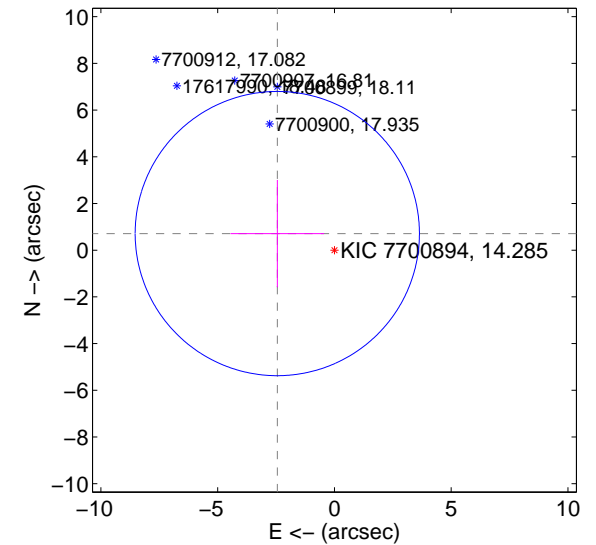
offset from difference PRF-fit to OOT PRF-fit



offset from difference PRF-fit to KIC position



offset from photometric centroids

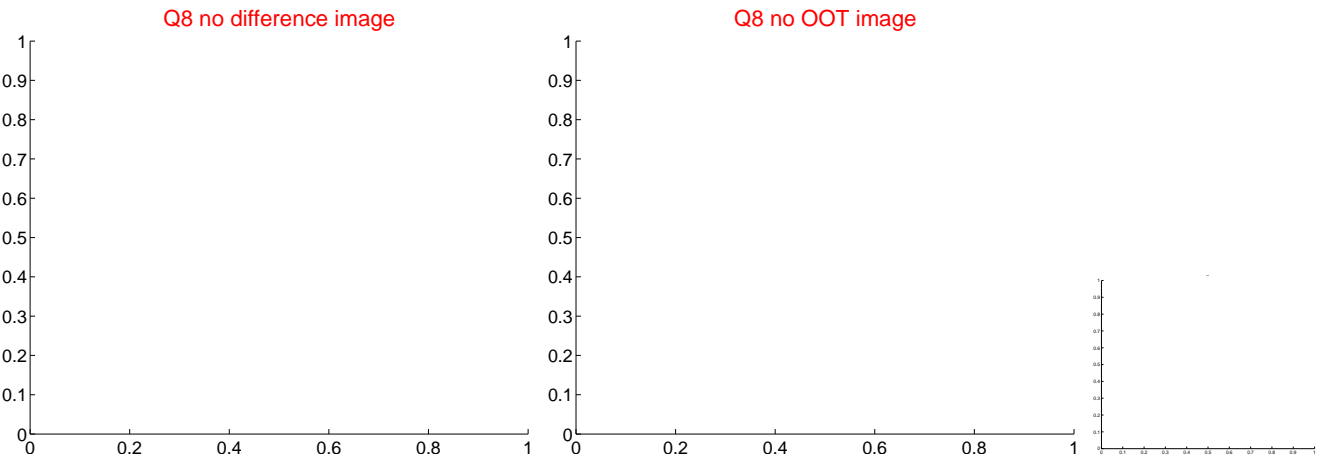
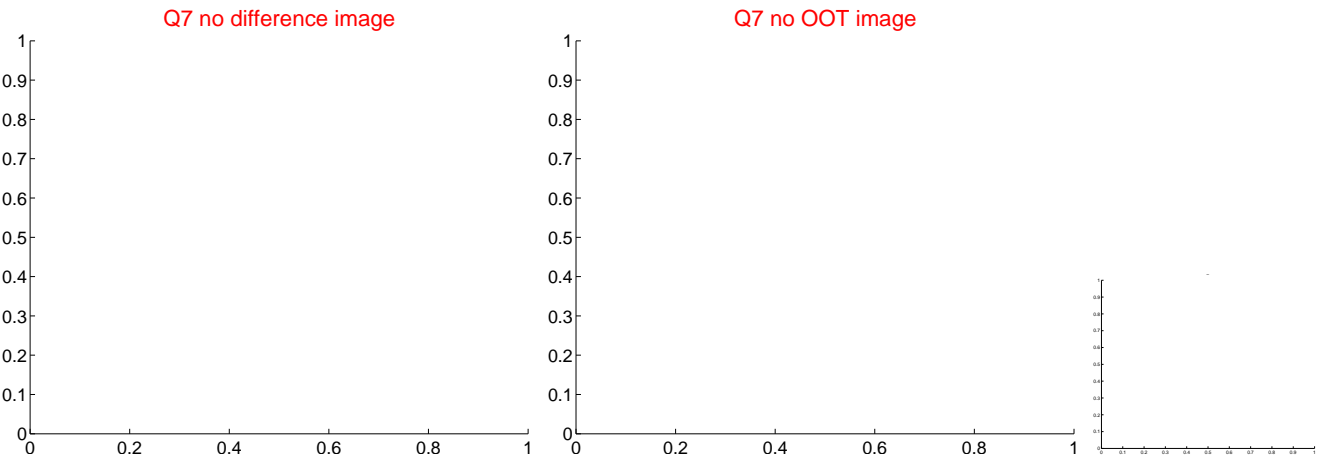
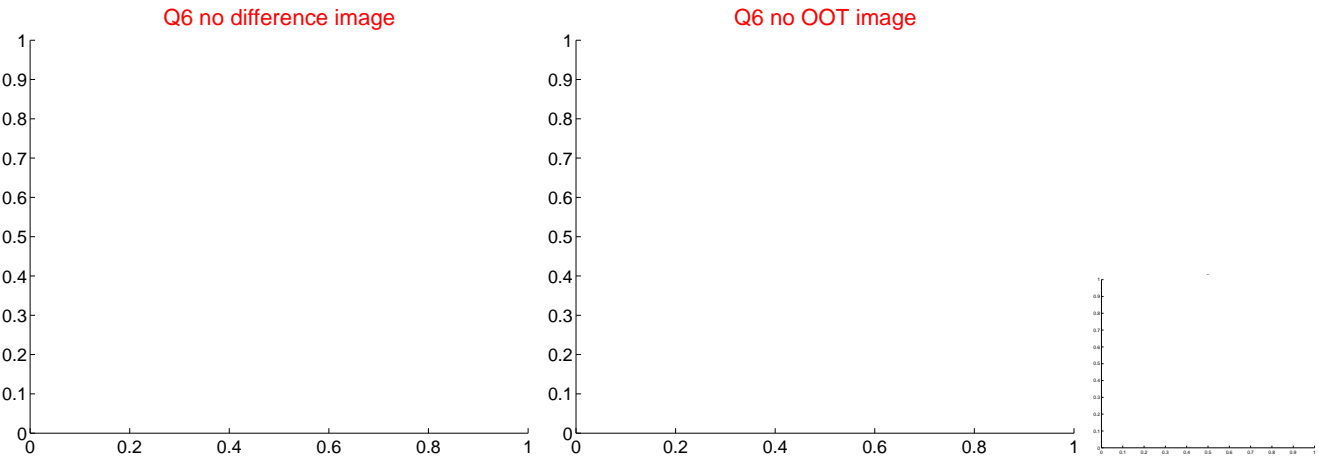
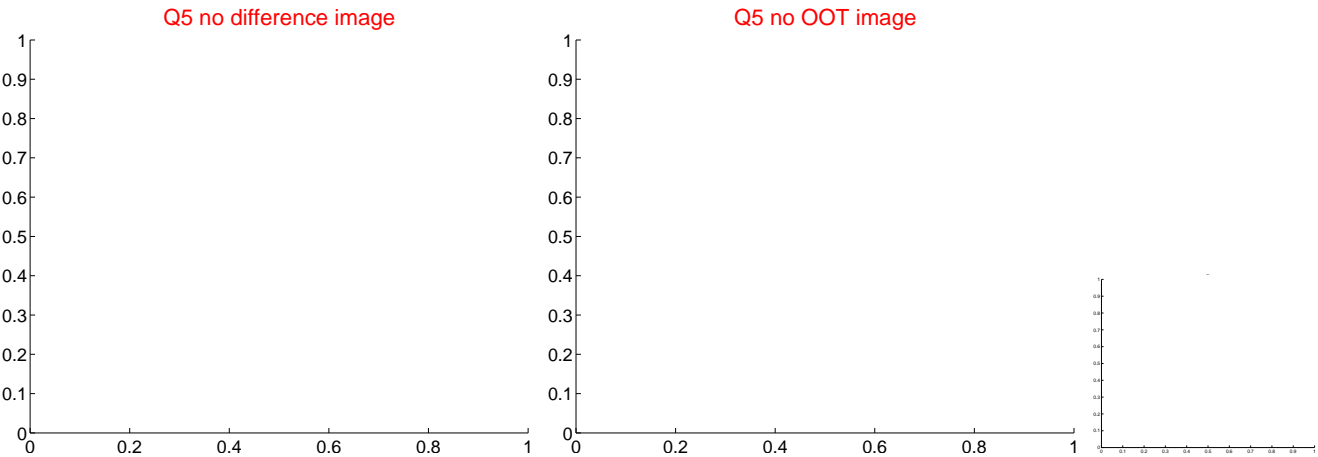


Centroid source offsets from the target star reconstructed from PRF and photometric centroids. Sky blue crosses: good quarterly centroid offsets; Vermillion crosses: bad quarterly centroid offsets; magenta cross: average over quarters. Length of the crosses: one- σ uncertainty. Blue circle: three- σ . Red *: target star. Blue *: Other stars. Text next to a star gives its KIC ID and kepmag. KIC IDs > 15,000,000 are from the UKIRT catalog.

white \times : KIC target position; $+$: OOT centroid; \triangle : difference centroid. red \times : large negative pixel value.

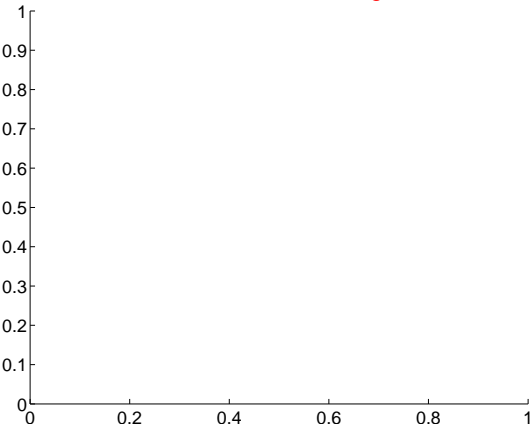


white \times : KIC target position; $+$: OOT centroid; \triangle : difference centroid. red \times : large negative pixel value.

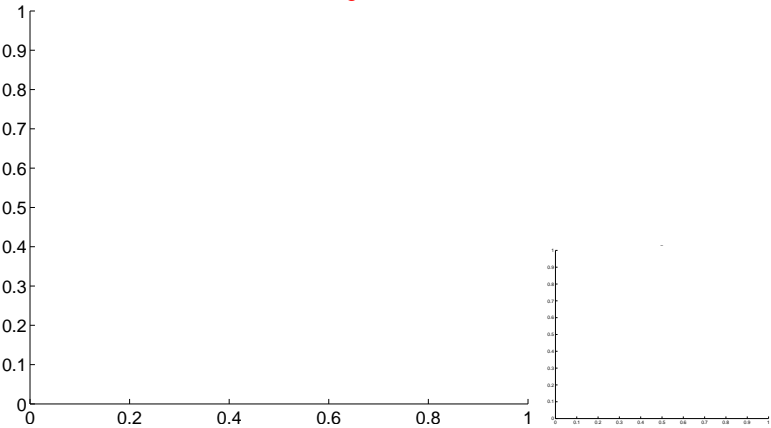


white ×: KIC target position; +: OOT centroid; △: difference centroid. red ✕: large negative pixel value.

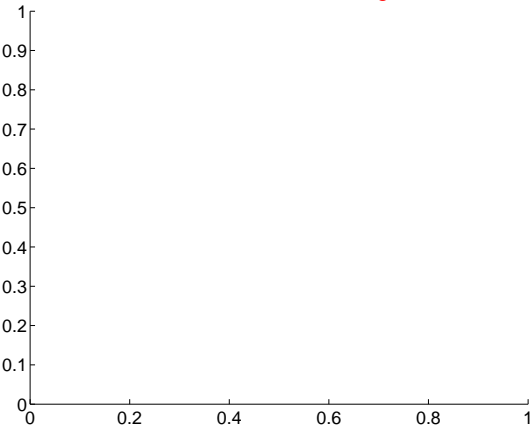
Q9 no difference image



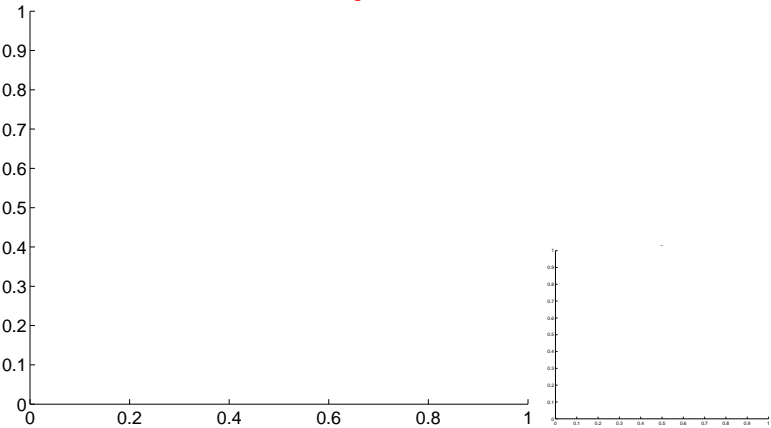
Q9 no OOT image



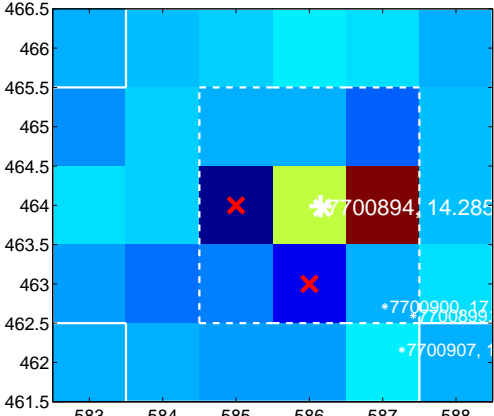
Q10 no difference image



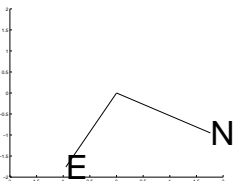
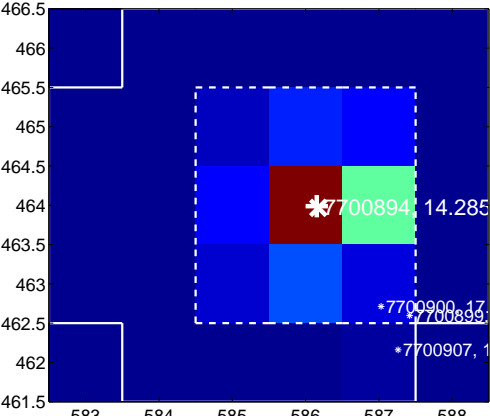
Q10 no OOT image



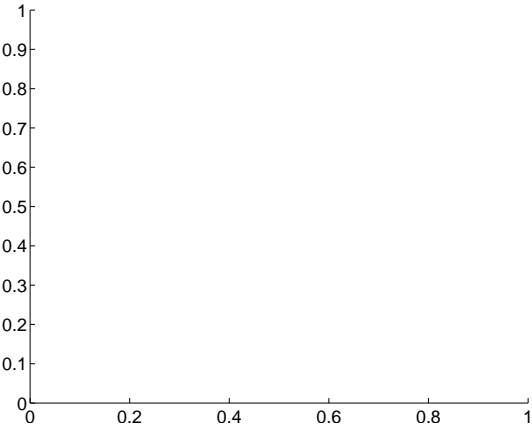
Q11 difference image. Poor Quality



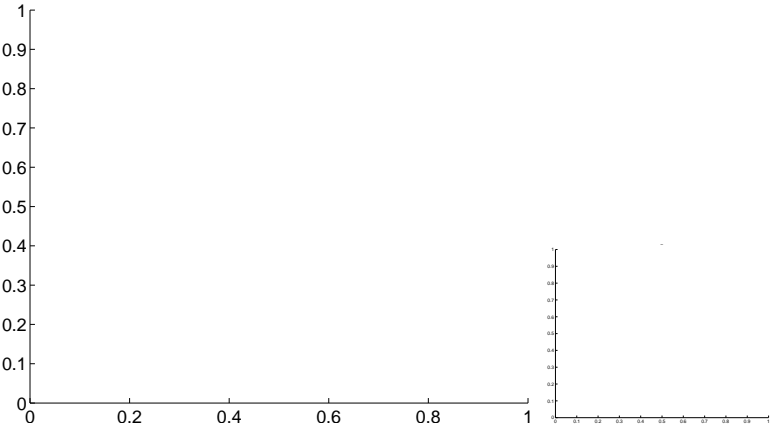
Q11 OOT image



Q12 no difference image

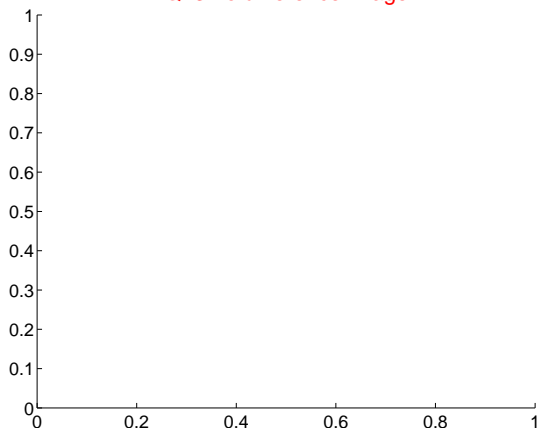


Q12 no OOT image

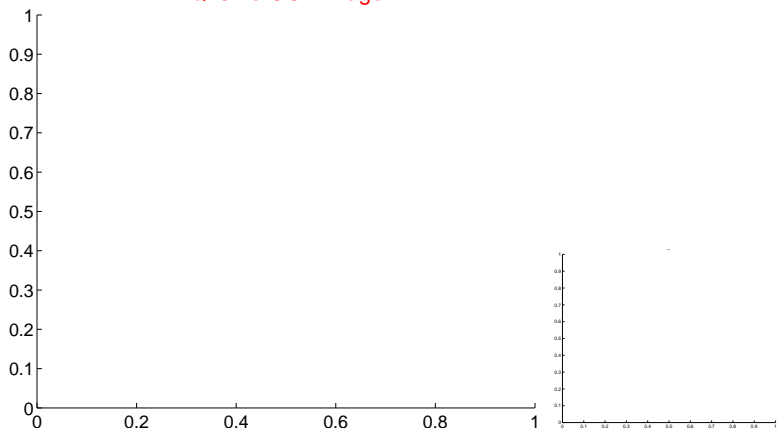


white \times : KIC target position; $+$: OOT centroid; \triangle : difference centroid. red \times : large negative pixel value.

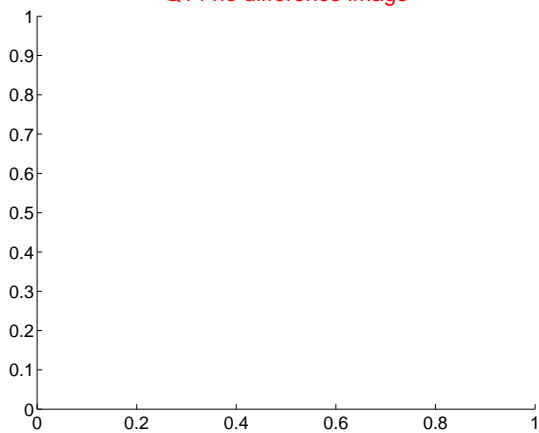
Q13 no difference image



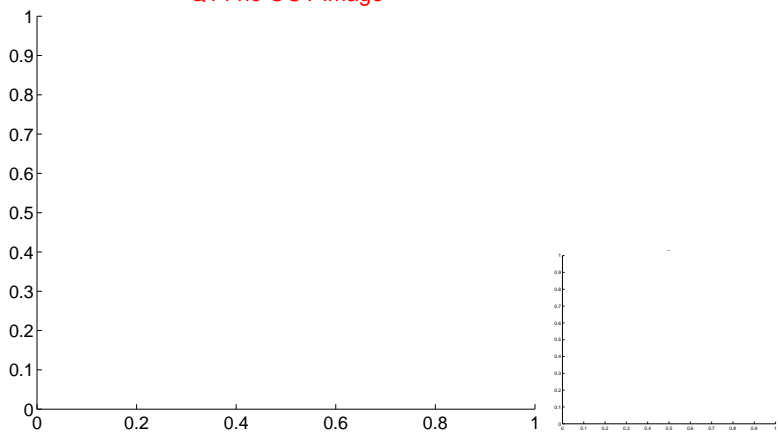
Q13 no OOT image



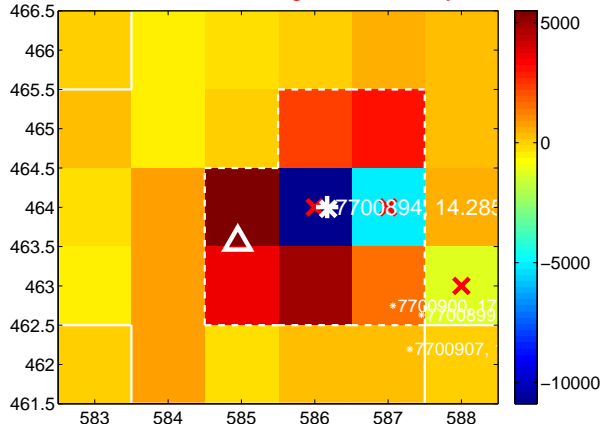
Q14 no difference image



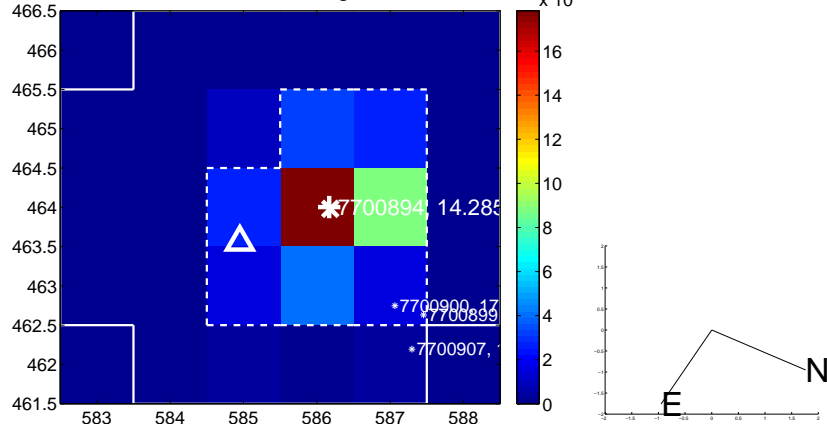
Q14 no OOT image



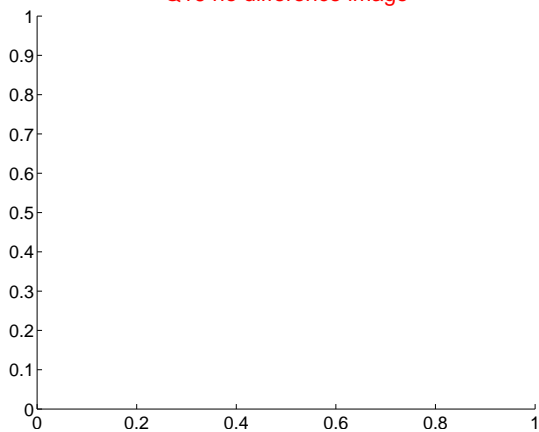
Q15 difference image. Poor Quality



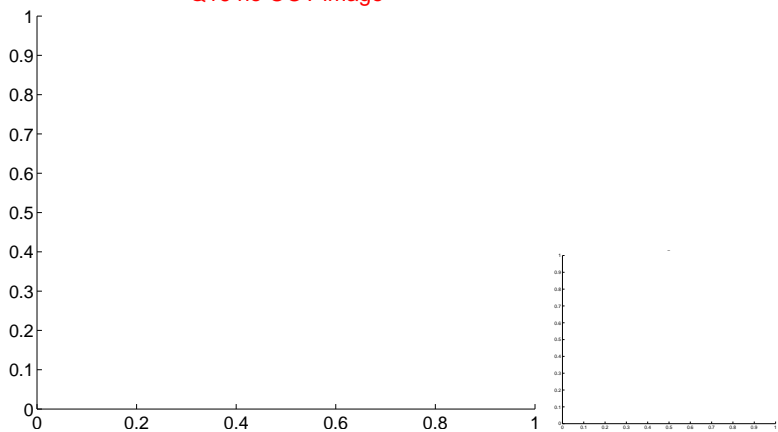
Q15 OOT image



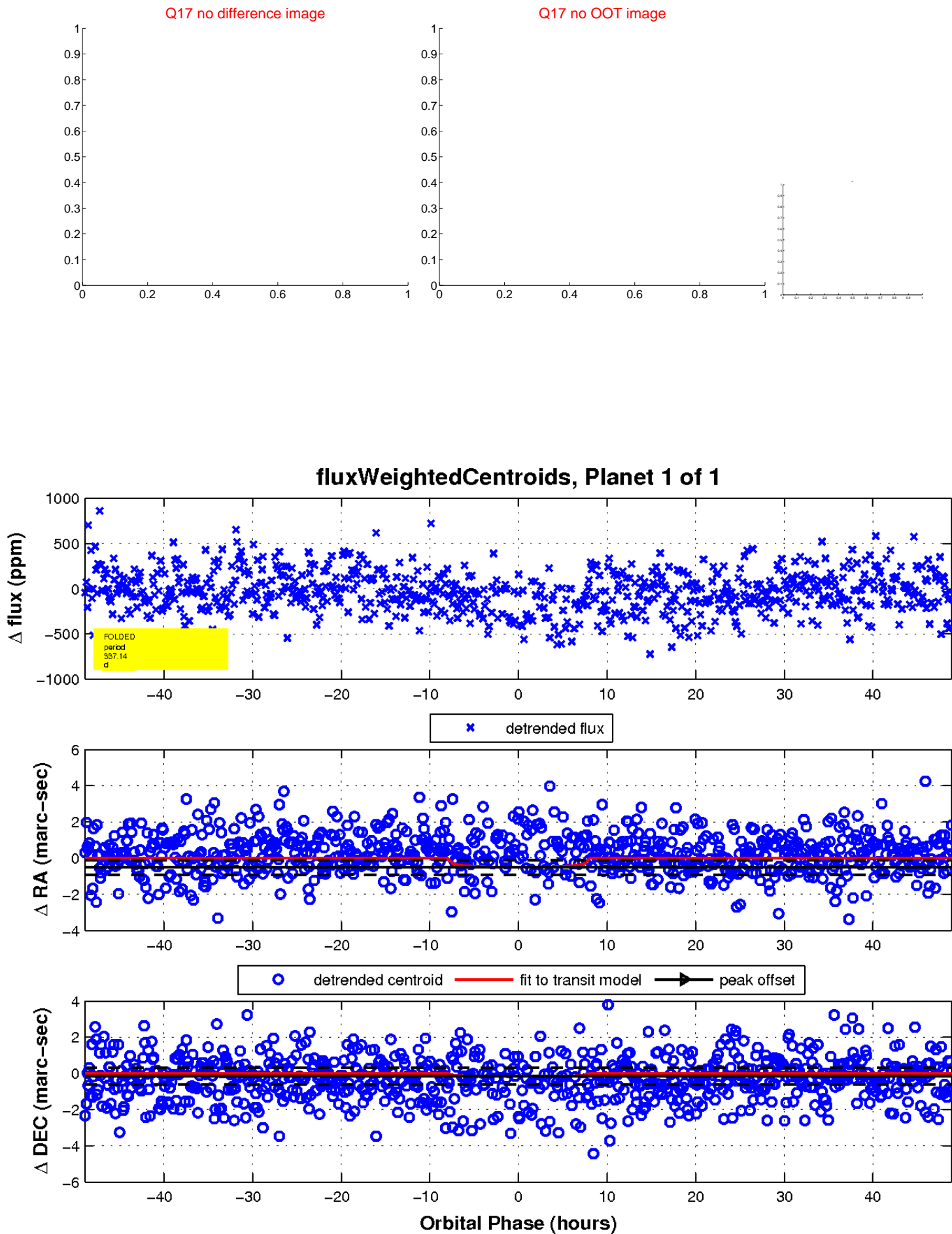
Q16 no difference image



Q16 no OOT image



white \times : KIC target position; $+$: OOT centroid; \triangle : difference centroid. red \times : large negative pixel value.



UKIRT Image

Declination

