

KIC 007692760

Q1-17 DR25 TCE Parameters

TCE	Run Type	KOI?	Period (Days)	Epoch (BKJD)	Depth (ppm)	Duration (Hours)	MES	SNR	R_{\star} (R_{\odot})	T_{\star} (K)	R_p (R_{\oplus})	S_p (S_{\oplus})
007692760-01	OBS	No	561.837663	233.736016	865.4	12.073	8.1	7.9	0.69	4826	2.30	0.16

Robovetter Results

TCE	Run Type	Disp	Score	N	S	C	E	Comments
007692760-01	OBS	FP	0.00	1	0	0	0	INDIV_TRANS_CHASES_MARSHALL_SKYE—ALL_TRANS_CHASES—MOD_NONUNIQ_ALT—INCONSISTENT_TRANS—CENT_FEW_DIFFS

Notes: OBS = Observed. INJ = Injected. INV = Inverted. SCR = Scrambled.

N = Not Transit-Like. S = Stellar Eclipse. C = Centroid Offset. E = Ephemeris Match.

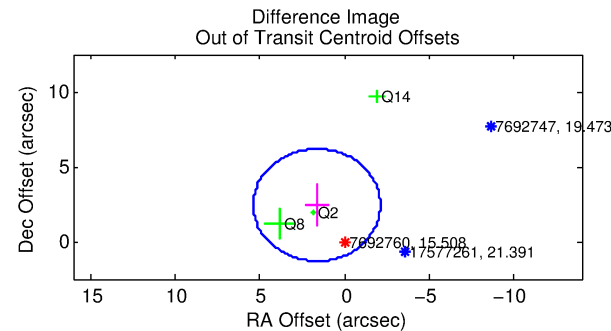
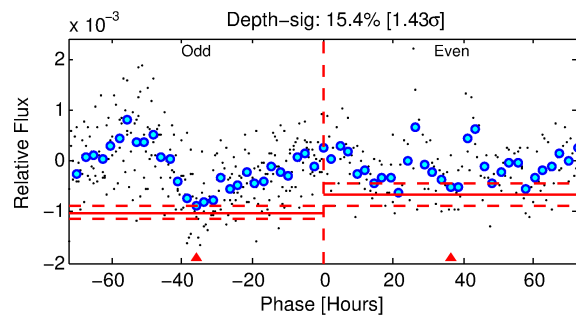
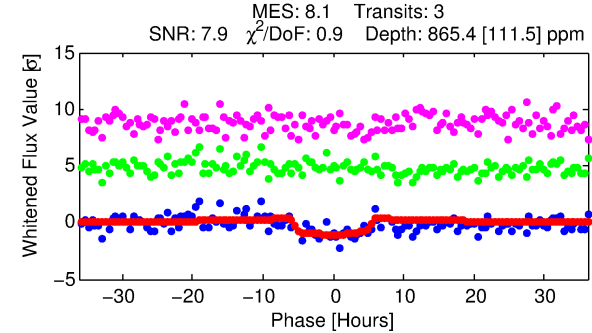
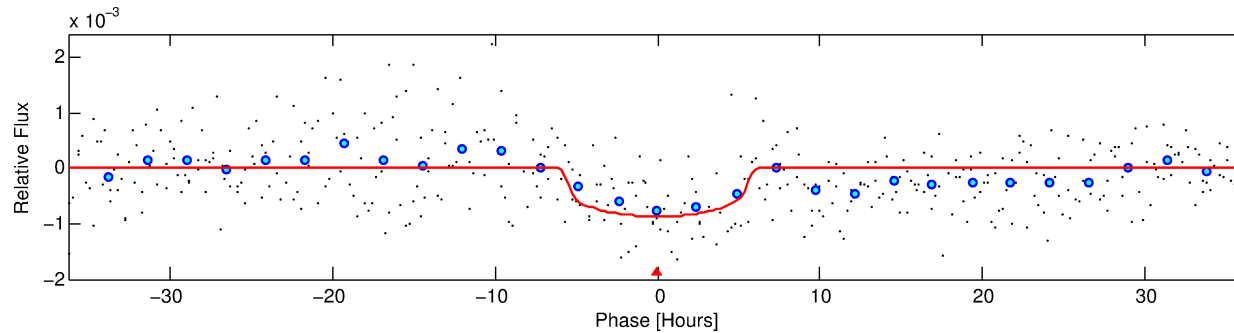
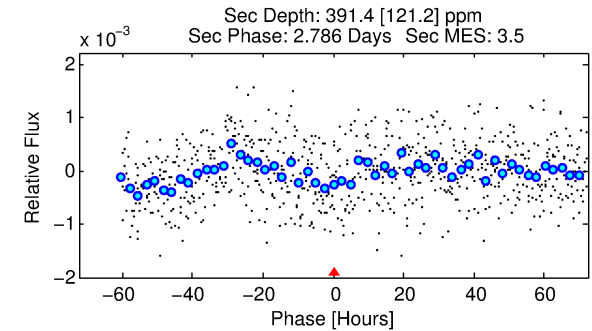
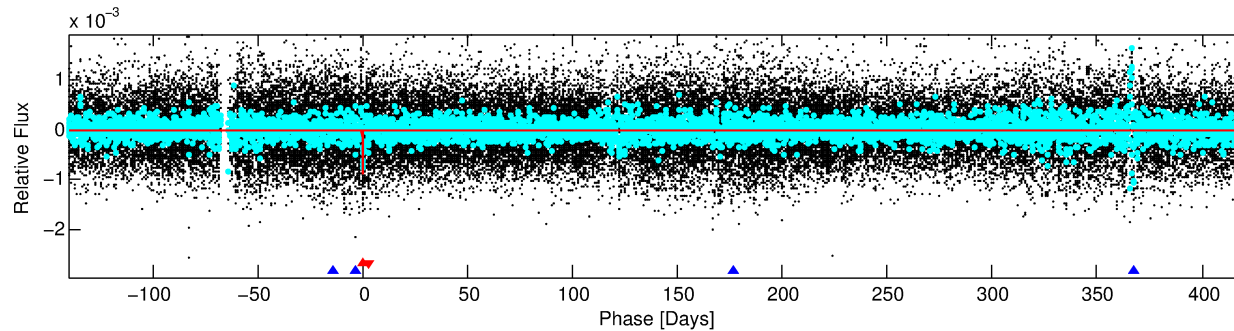
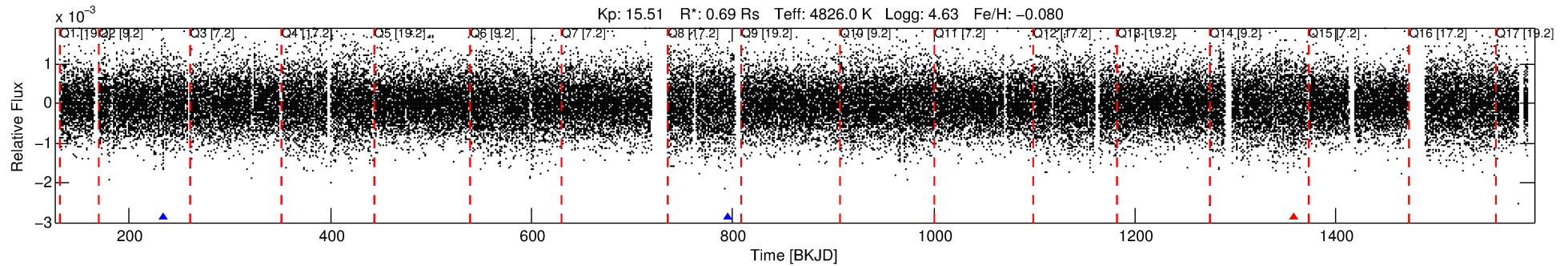
See http://exoplanetarchive.ipac.caltech.edu/docs/API_kepcandidate_columns.html#proj_disp_col for comment definitions.

Ephemeris Match Information For 007692760-01

No Significant Match Found

DV One-Page Summary

KIC: 7692760 Candidate: 1 of 2 Period: 561.838 d



DV Fit Results:

Period = 561.83766 [0.01450] d
Epoch = 233.7360 [0.0174] BKJD
Rp/R* = 0.0304 [0.0082]
a/R* = 227.25 [205.46]
b = 0.81 [0.40]
Seff = 0.16 [0.03]
Teq = 161 [7] K
Rp = 2.30 [0.67] Re
a = 1.2095 [0.1025] AU
Ag = 59576.97 [37786.04] [1.58σ]
Teffp = 3893 [618] K [6.03σ]

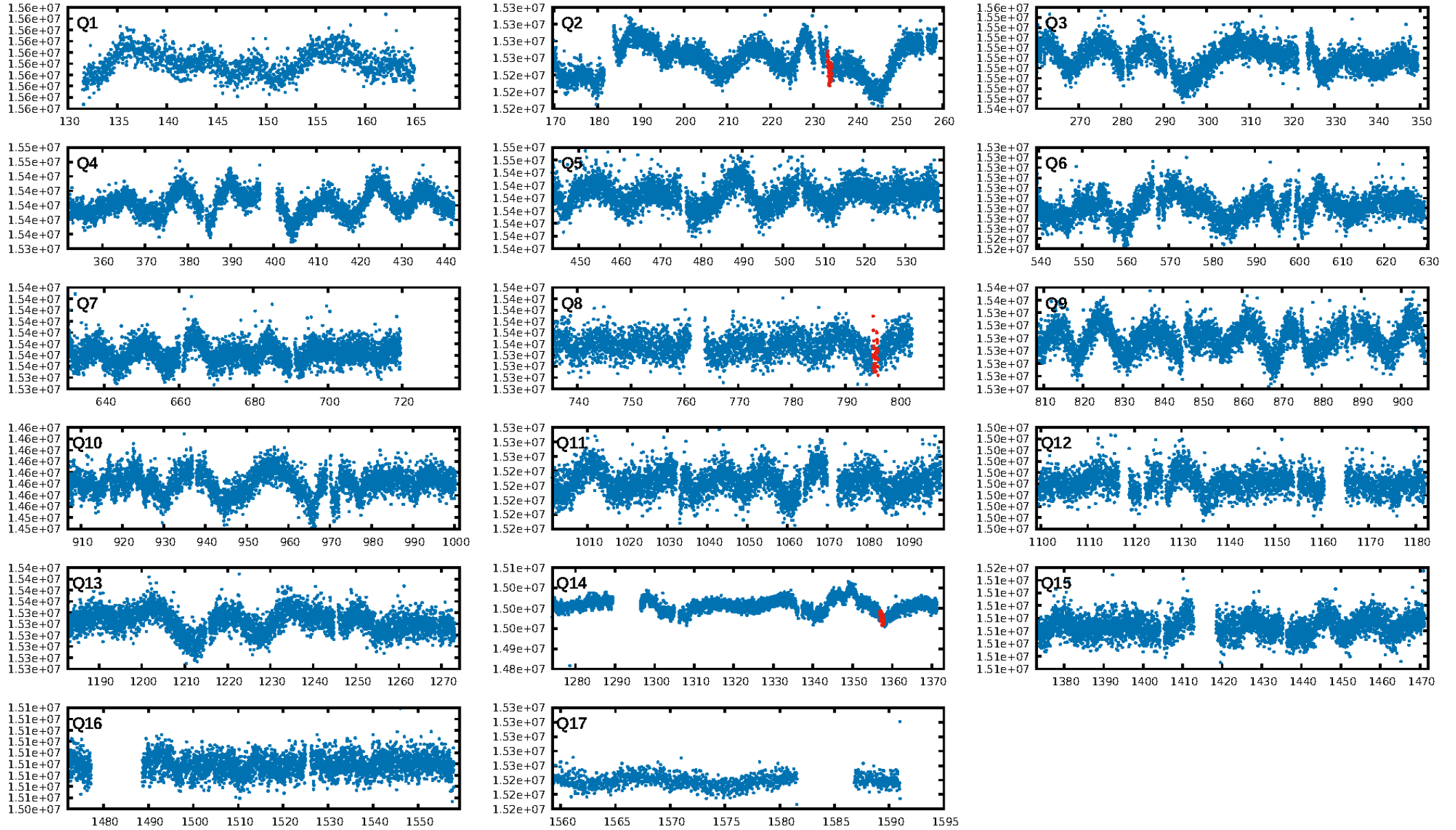
DV Diagnostic Results:

ShortPeriod-sig: 100.0% [178.53σ]
LongPeriod-sig: N/A
ModelChiSquare2-sig: 5.1%
ModelChiSquareGof-sig: 100.0%
Bootstrap-pfa: 1.53e-11
RollingBand-fgt: 0.67 [2/3]
GhostDiagnostic-chr: 3.174
Centroid-sig: 7.1%
Centroid-so: 2.462 arcsec [1.60σ]
OotOffset-rm: 2.930 arcsec [2.35σ]
OotOffset-st: 2/0/1/0 [3]
KicOffset-rm: 2.997 arcsec [2.04σ]
KicOffset-st: 2/0/1/0 [3]
DiffImageQuality-fgm: 0.33 [1/3]
DiffImageOverlap-fno: 1.00 [3/3]

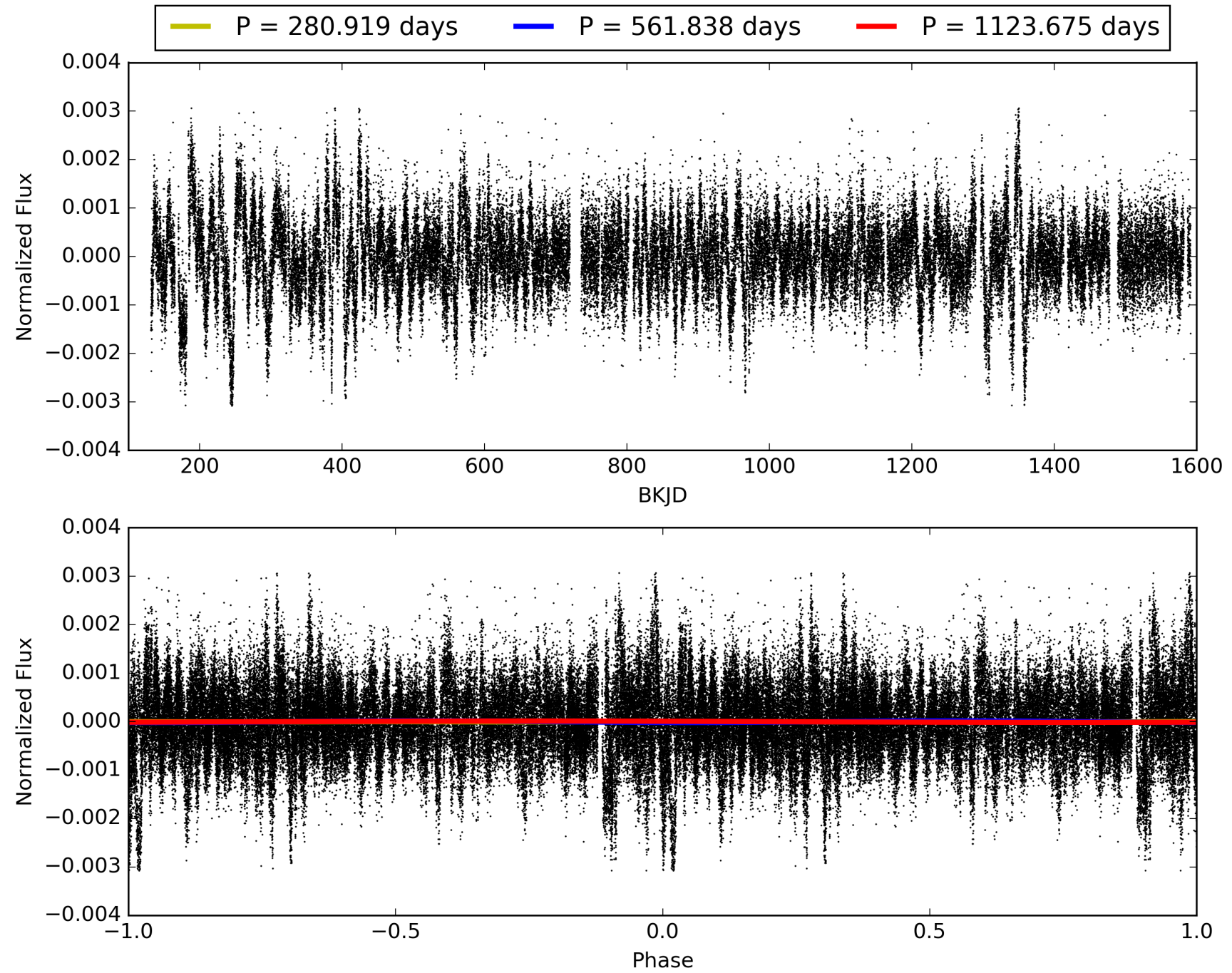
Software Revision: svn+ssh://murzim/repo/soc/tags/release/9.3.42@60958 -- Date Generated: 29-Jan-2016 05:17:59 Z

This Data Validation Report Summary was produced in the Kepler Science Operations Center Pipeline at NASA Ames Research Center

TCE 007692760-01, PDC Light Curves

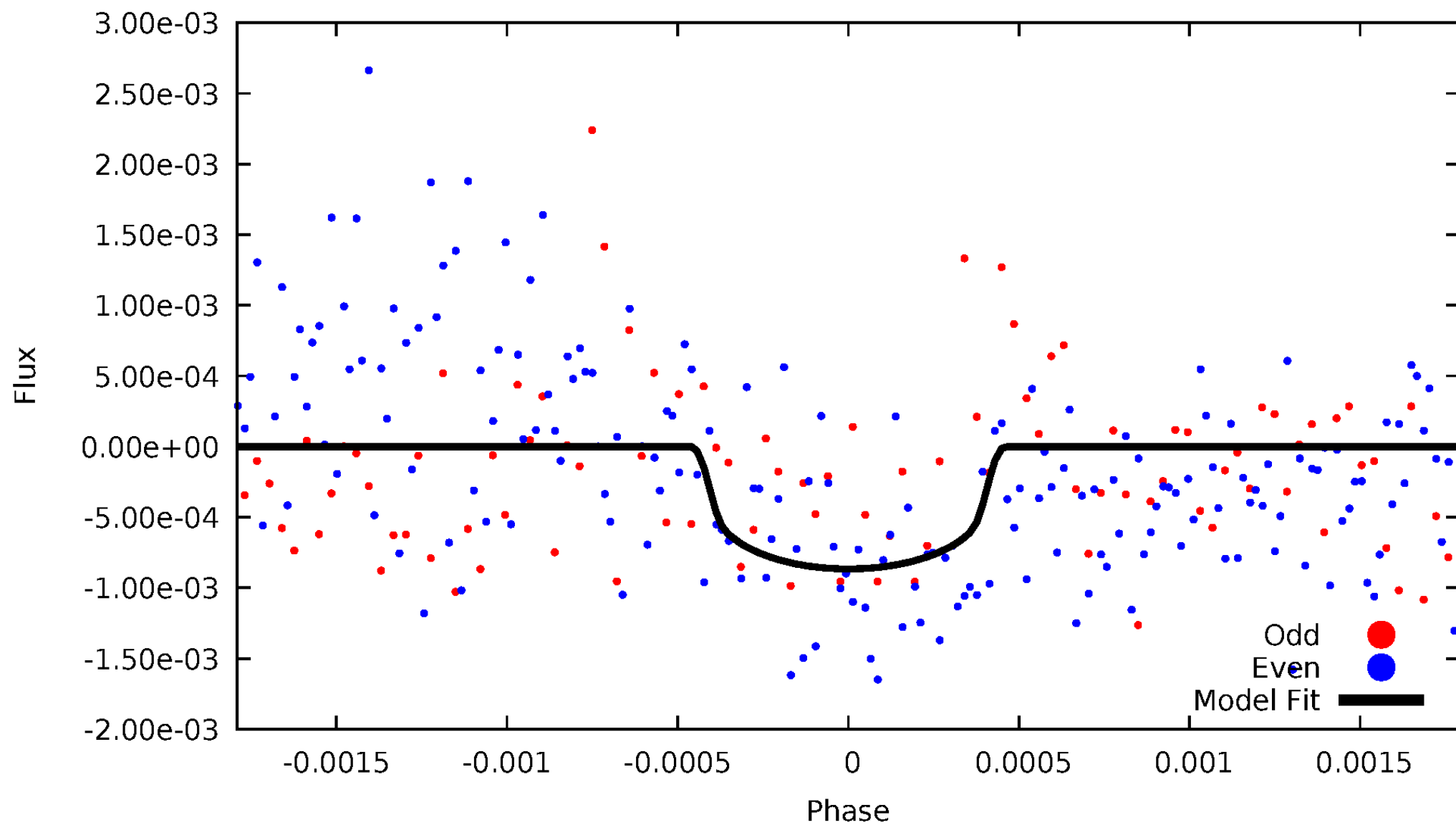


TCE 007692760-01



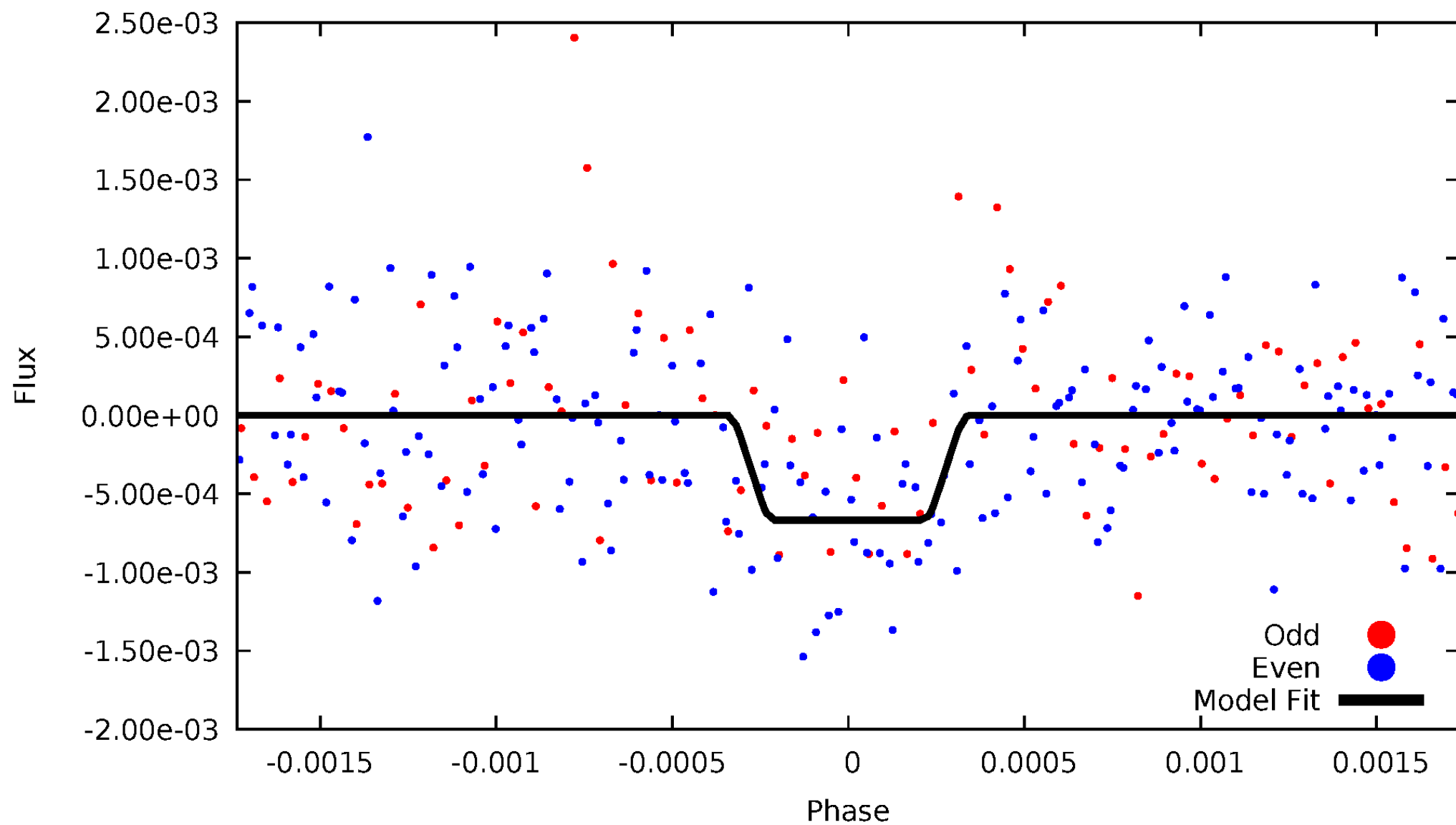
DV Odd/Even

TCE 007692760-01



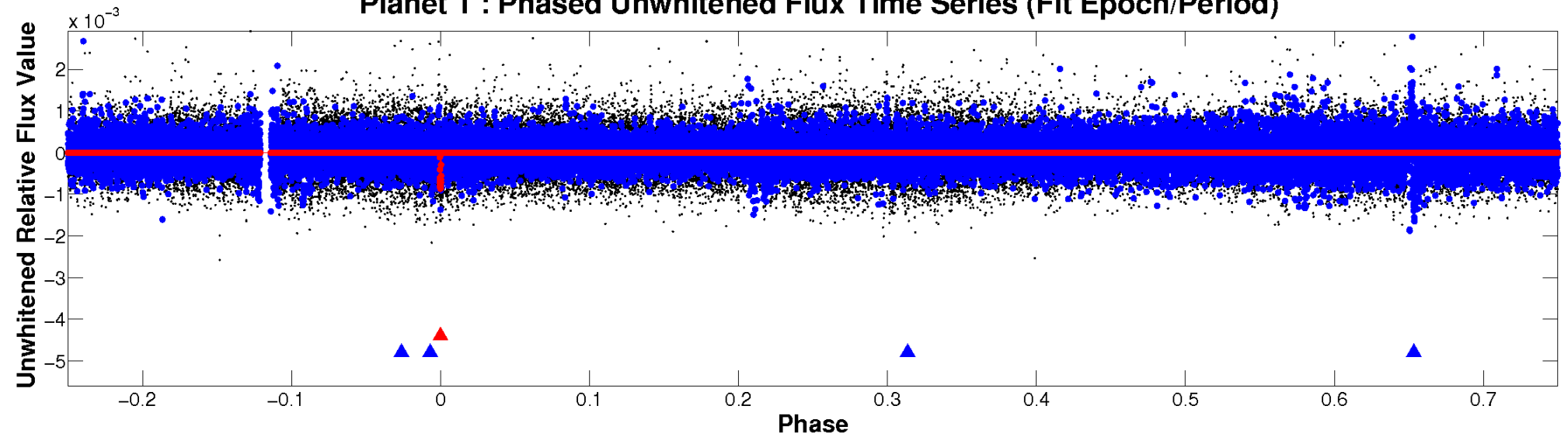
ALT Odd/Even

TCE 007692760-01

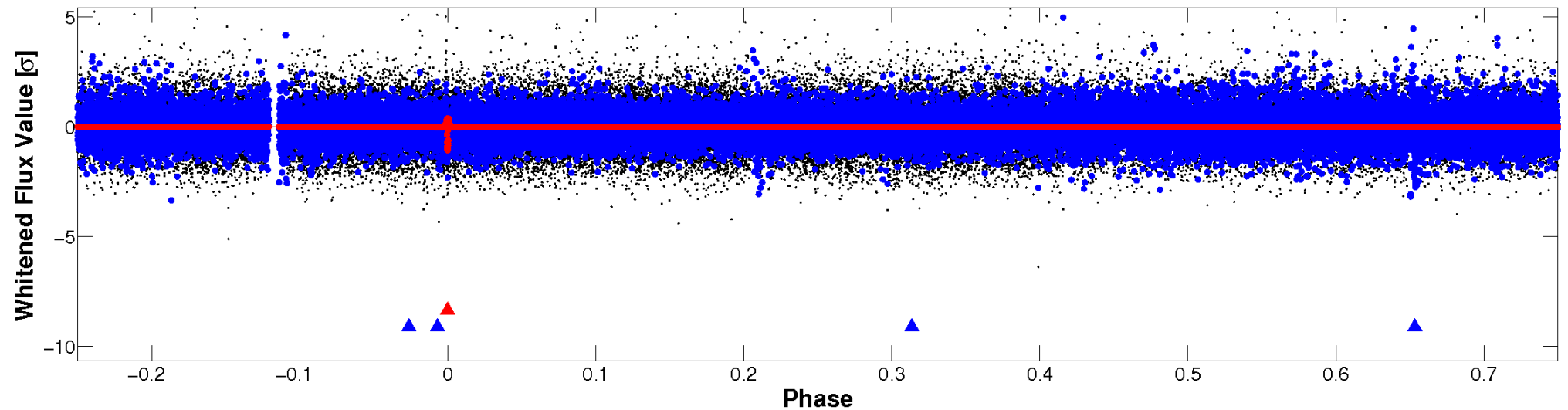


Non-Whitened Vs. Whitened Light Curve

Planet 1 : Phased Unwhitened Flux Time Series (Fit Epoch/Period)



Planet 1 : Phased Whitened Flux Time Series (Fit Epoch/Period)



PDC Quarter-Phased Transit Curves

TCE 007692760-01 P=561.837663 Days $T_0=233.736016$ (BKJD)



DV Quarter-Phased Transit Curves

TCE 007692760-01 P=561.837663 Days $T_0=233.736016$ (BKJD)



Alt. Detrend Quarter-Phased Transit Curves

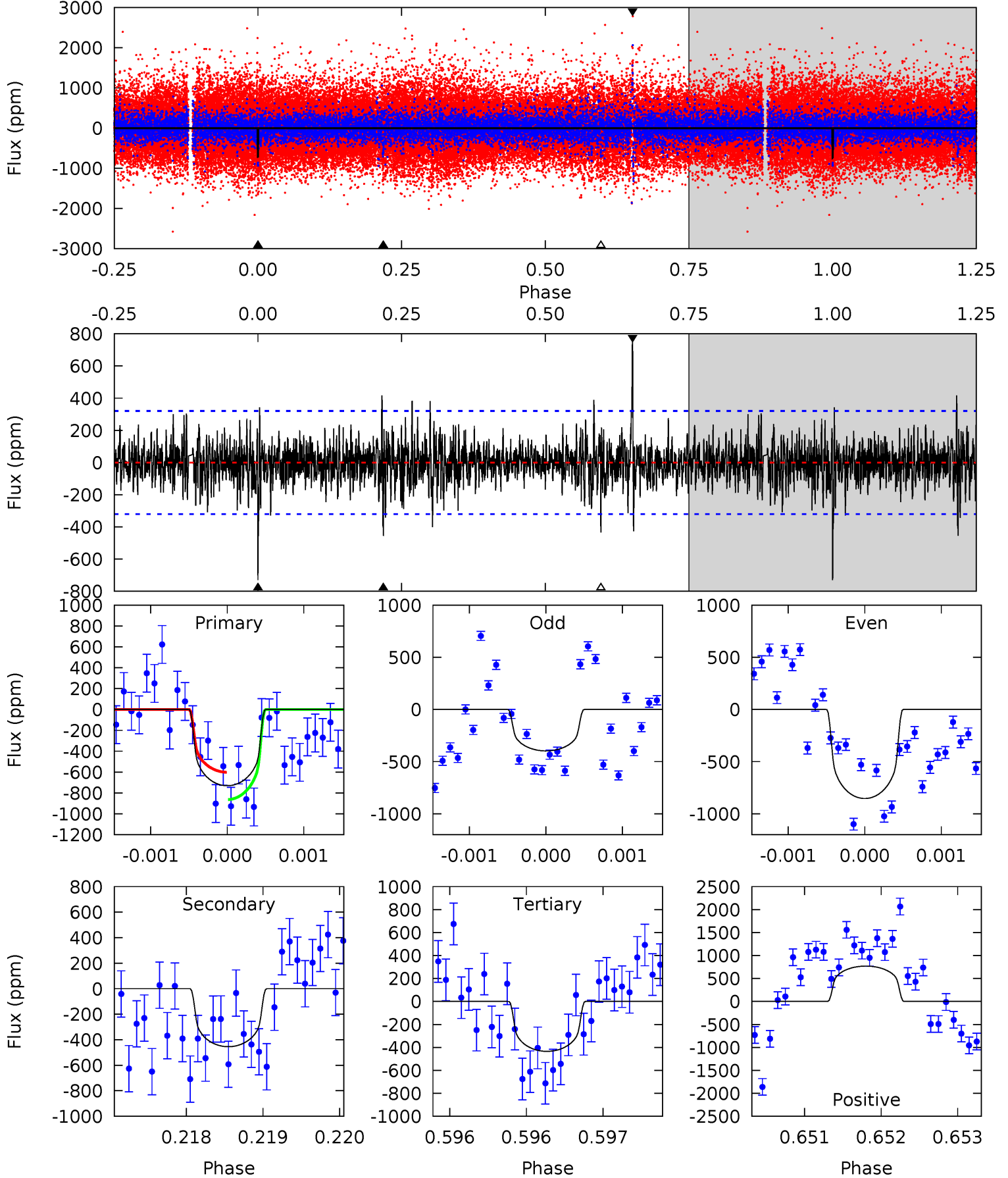
TCE 007692760-01 P=561.875222 Days $T_0=233.713685$ (BKJD)



DV Model-Shift Uniqueness Test

007692760-01, P = 561.837663 Days, E = 233.736016 Days

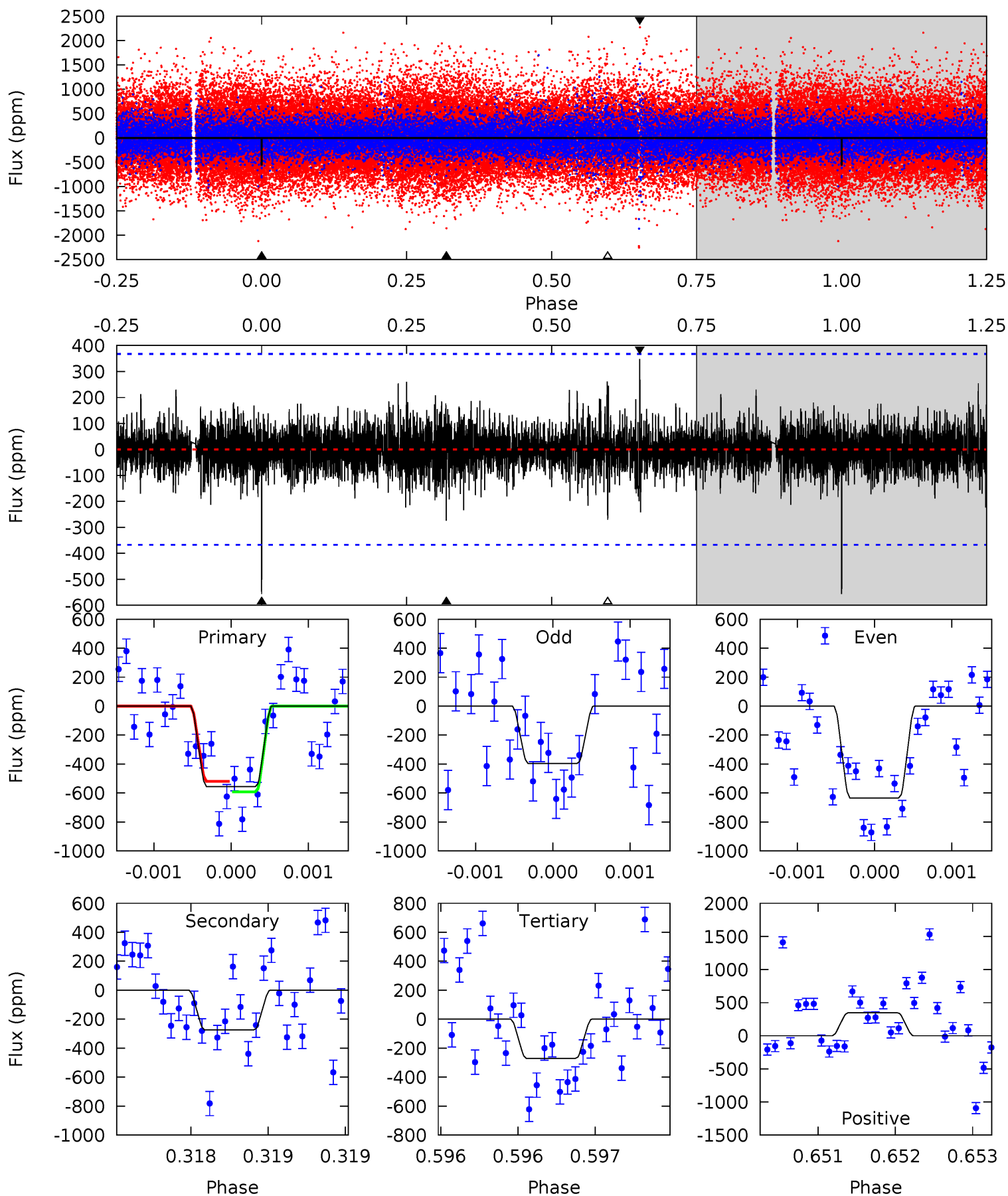
Pri	Sec	Ter	Pos	FA ₁	FA ₂	F _{Red}	Pri-Ter	Pri-Pos	Sec-Ter	Sec-Pos	Odd-Evn	DMM	Shape	TAT
12.5	7.75	7.42	13.1	5.46	3.31	1.68	5.05	-0.67	0.34	-5.38	3.67	1.19	0.51	2.23



Alt Model-Shift Uniqueness Test

007692760-01, P = 561.875222 Days, E = 233.713685 Days

Pri	Sec	Ter	Pos	FA ₁	FA ₂	F _{Red}	Pri-Ter	Pri-Pos	Sec-Ter	Sec-Pos	Odd-Evn	DMM	Shape	TAT
8.37	4.13	4.08	5.23	5.53	3.41	0.93	4.29	3.13	0.05	-1.11	1.69	1.40	0.38	0.55



Stellar Parameters For KIC 007692760

	$T_{\text{eff}} (K)$	$\log(g)$	$[\text{Fe}/\text{H}]$	$R (R_{\odot})$	$M (M_{\odot})$	$p_{\star} (\text{g}\cdot\text{cm}^{-3})$
	4826^{+146}_{-131}	$4.630^{+0.027}_{-0.058}$	$-0.080^{+0.300}_{-0.300}$	$0.693^{+0.075}_{-0.048}$	$0.768^{+0.054}_{-0.075}$	$3.251^{+0.450}_{-0.743}$
	+3%/-3%	+1%/-1%	+375%/-375%	+11%/-7%	+7%/-10%	+14%/-23%
Source	PHO1	KIC0	KIC0	DSEP		

KIC = Kepler Input Catalog; PHO = Photometry; SPE = Spectroscopy; AST = Asteroseismology
 TRA = Transits; DESP = Dartmouth Models; MULT = Multiple Models

Secondary Eclipse Parameters for KIC 007692760-01 / KOI

Detrend	Depth (ppm)	$R_p (R_{\oplus})$	$T_{\text{max}} (K)$	$T_{\text{obs}} (K)$	A_{obs}
DV	-455 ± 59	$2.34^{+0.65}_{-0.63}$	227^{+8}_{-7}	4193^{+614}_{-370}	66078^{+62882}_{-26004}
Alt.	-274 ± 66	$1.94^{+0.65}_{-0.62}$	228^{+8}_{-8}	4083^{+657}_{-395}	58166^{+62890}_{-26819}

T_{max} = Theoretical Maximum Planetary Temperature

T_{obs} = Observed Planetary Temperature (Assuming A=0.3)

A_{obs} = Observed Albedo (Assuming T=0)

If a secondary eclipse is present, the system is likely an EB if $T_{\text{obs}} \gg T_{\text{max}}$ AND $A_{\text{obs}} \gg 1.0$

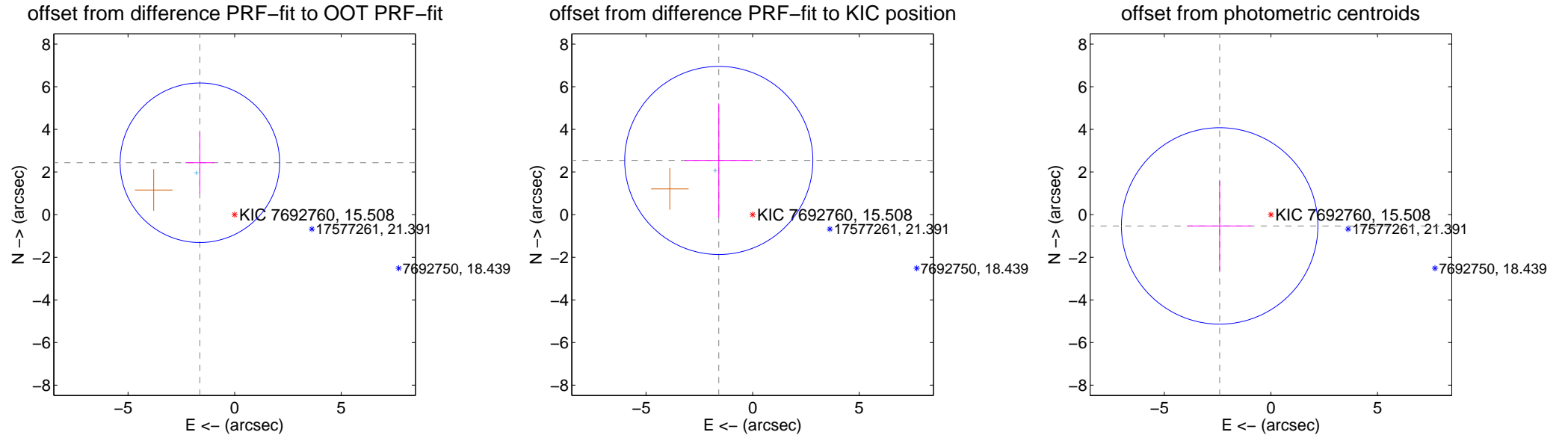
DV Centroid Data

Supplemental centroid analysis for 007692760-01. Kepler magnitude: 15.51. Transit SNR 7.87

There are 1 quarters with good PRF difference image offsets

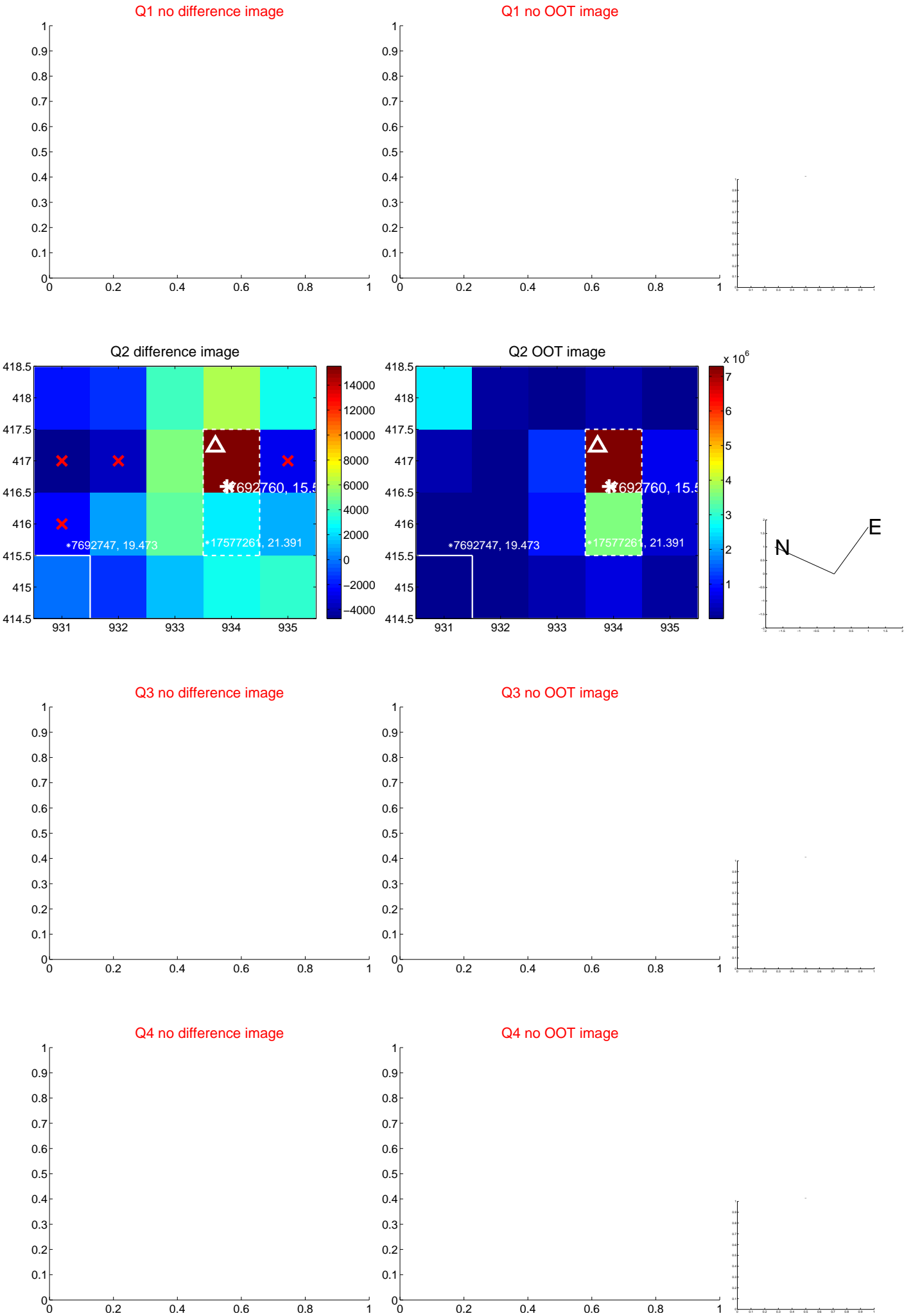
The direct PRF centroid is offset from the target star catalog position by about 0.18 arcsec

	Distance in arcsec	Distance / σ	Δ RA	Δ Dec
PRF-fit source offset from OOT	2.930 ± 1.247	2.35	1.631 ± 0.683	2.434 ± 1.430
PRF-fit source offset from KIC position	2.997 ± 1.471	2.04	1.588 ± 1.597	2.542 ± 2.676
photometric centroid source offset	2.46 ± 1.54	1.60	2.40 ± 1.50	-0.53 ± 2.10

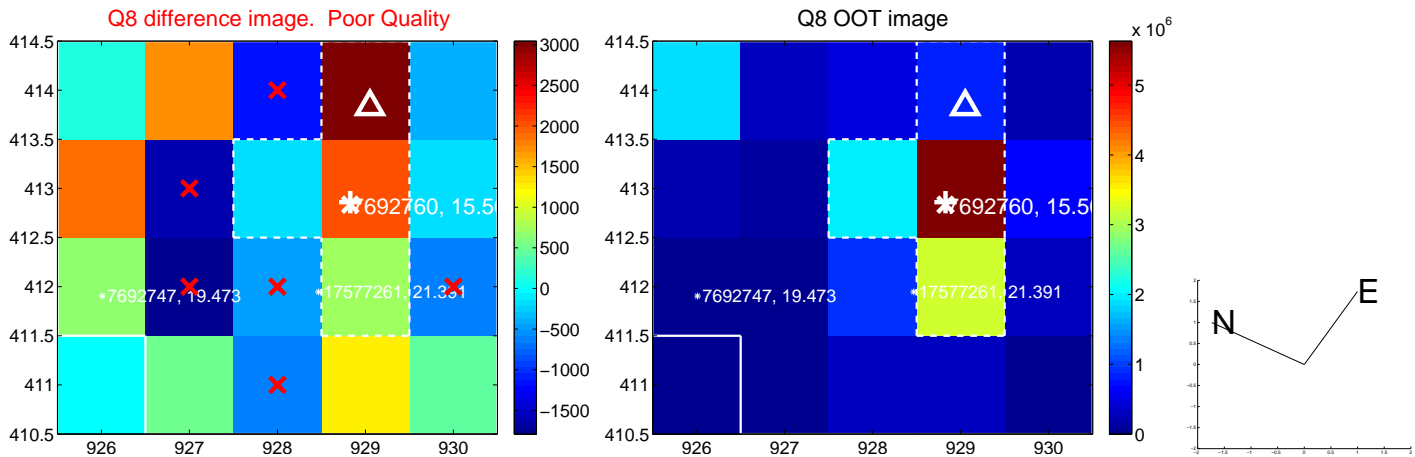
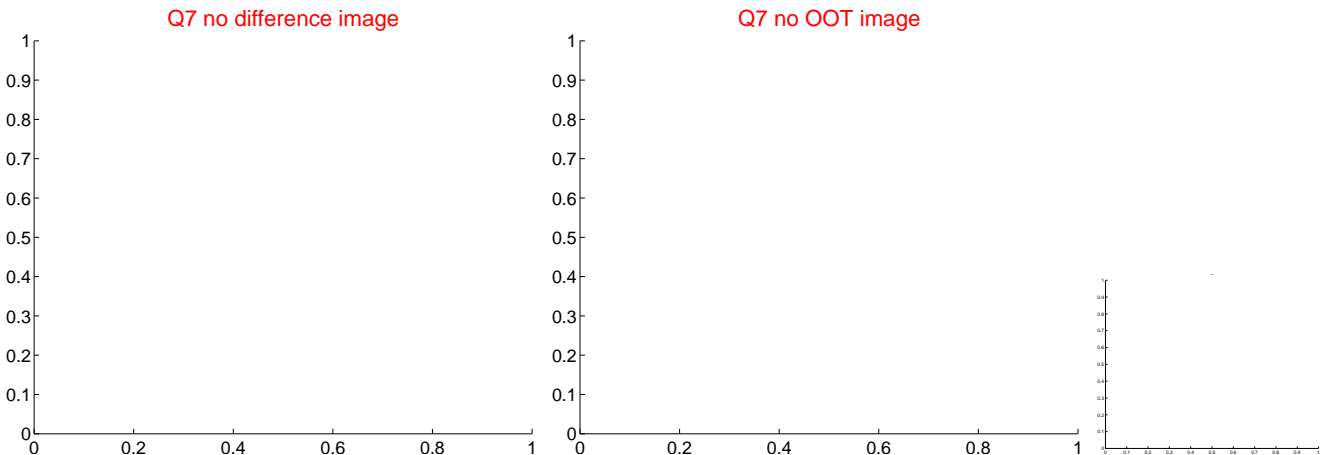
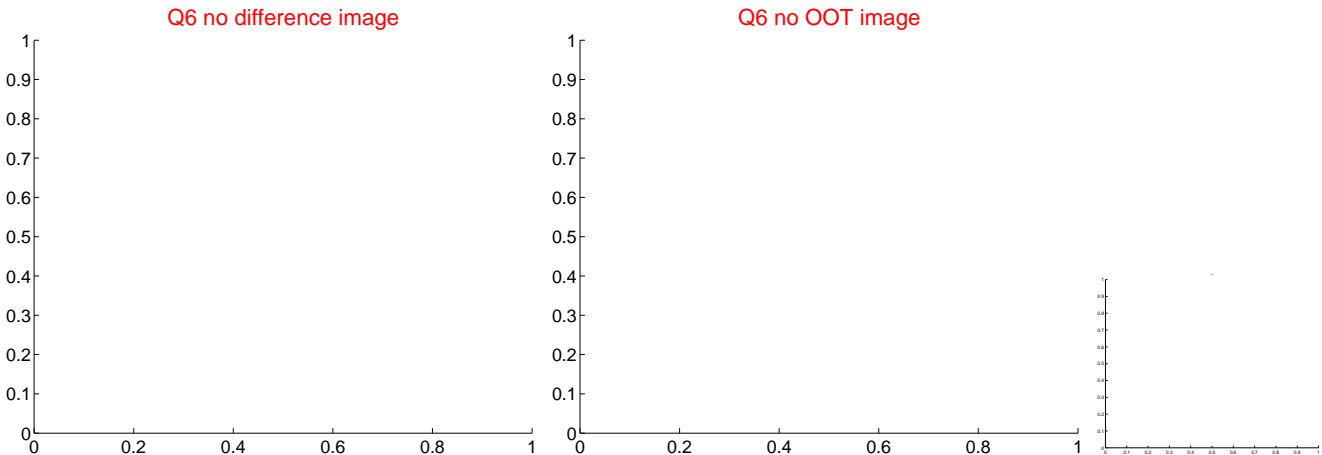
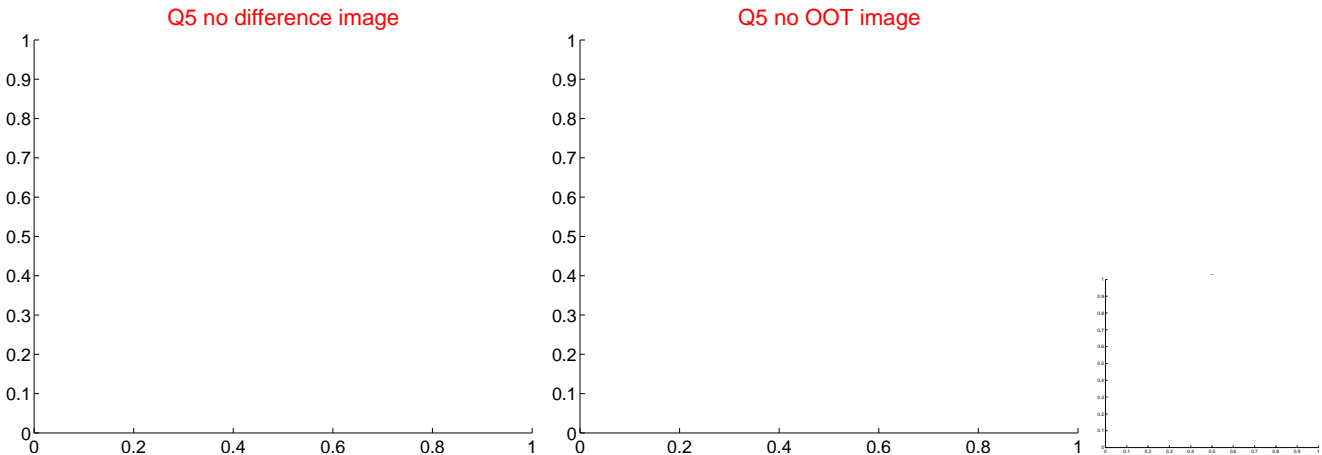


Centroid source offsets from the target star reconstructed from PRF and photometric centroids. **Sky blue crosses: good quarterly centroid offsets; Vermillion crosses: bad quarterly centroid offsets**; magenta cross: average over quarters. Length of the crosses: one- σ uncertainty. Blue circle: three- σ . Red *: target star. Blue *: Other stars. Text next to a star gives its KIC ID and kepmag. KIC IDs > 15,000,000 are from the UKIRT catalog.

white \times : KIC target position; +: OOT centroid; \triangle : difference centroid. red \times : large negative pixel value.



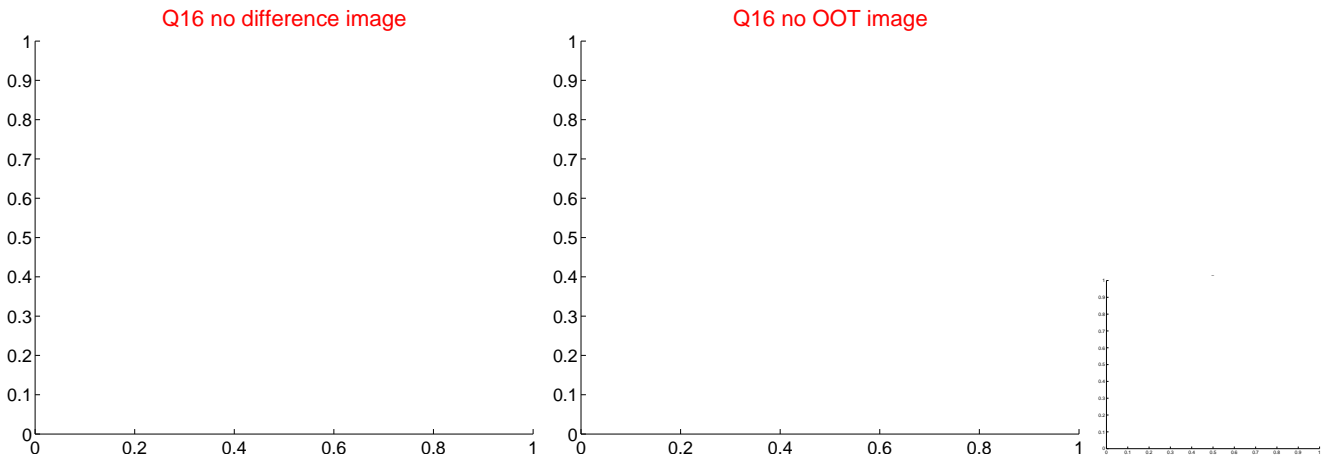
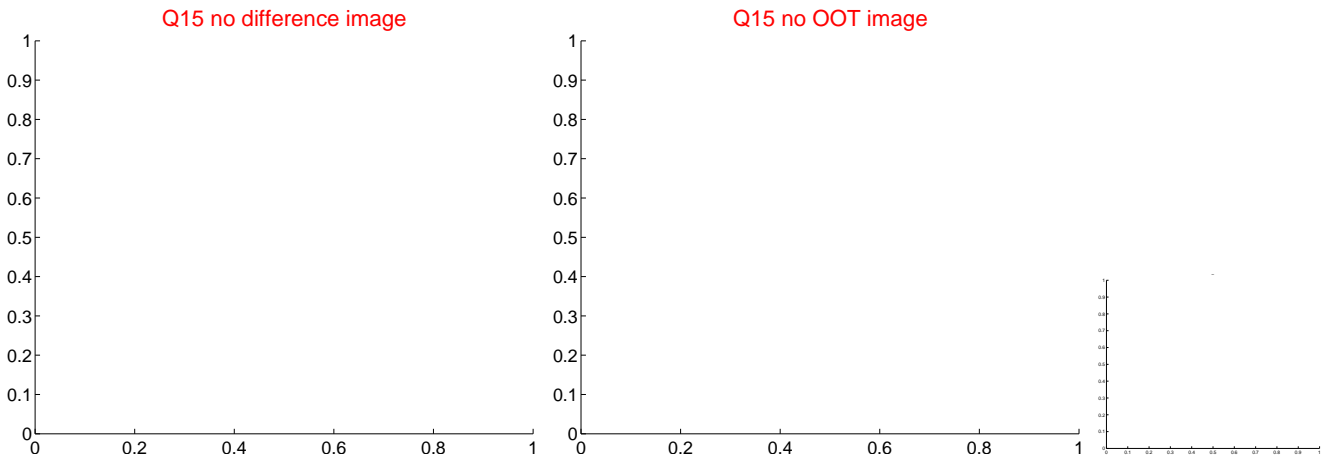
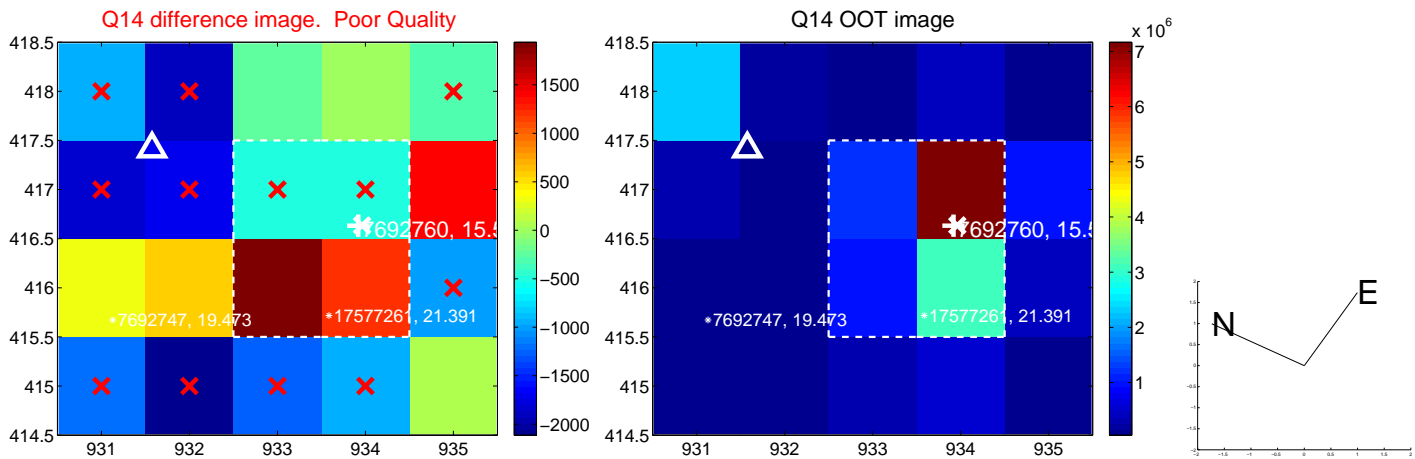
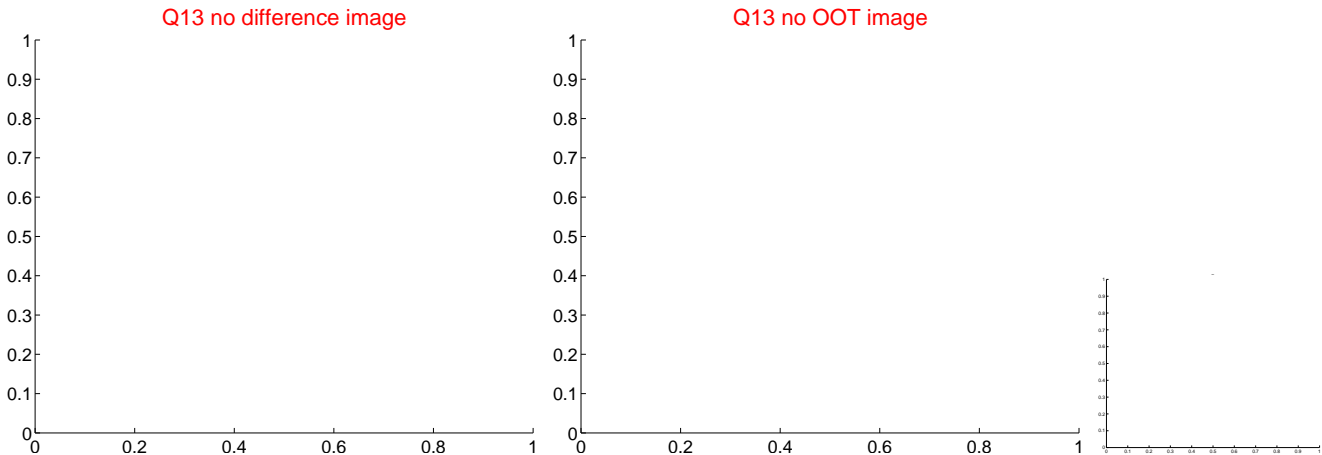
white \times : KIC target position; $+$: OOT centroid; \triangle : difference centroid. red \times : large negative pixel value



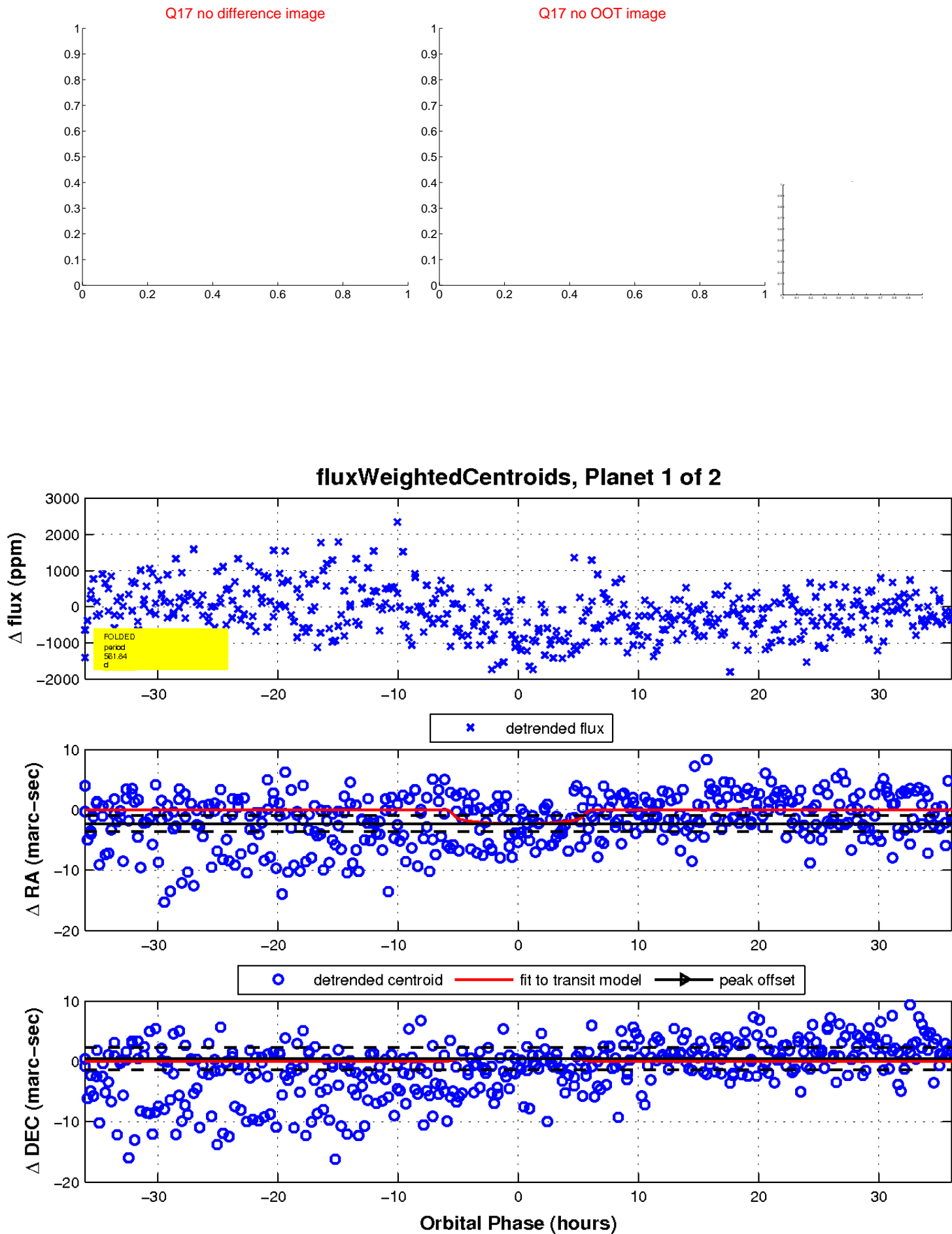
white \times : KIC target position; $+$: OOT centroid; \triangle : difference centroid. red \times : large negative pixel value.



white \times : KIC target position; $+$: OOT centroid; \triangle : difference centroid. red \times : large negative pixel value



white \times : KIC target position; $+$: OOT centroid; \triangle : difference centroid. red \times : large negative pixel value.



UKIRT Image

Declination

