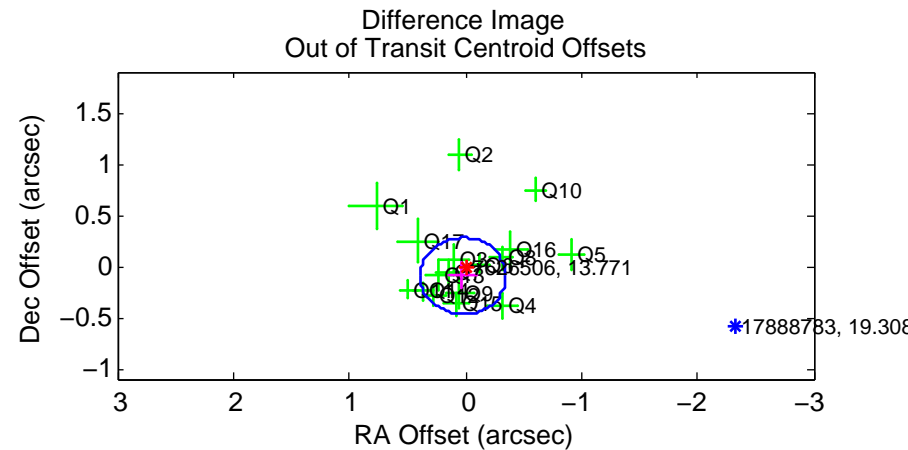
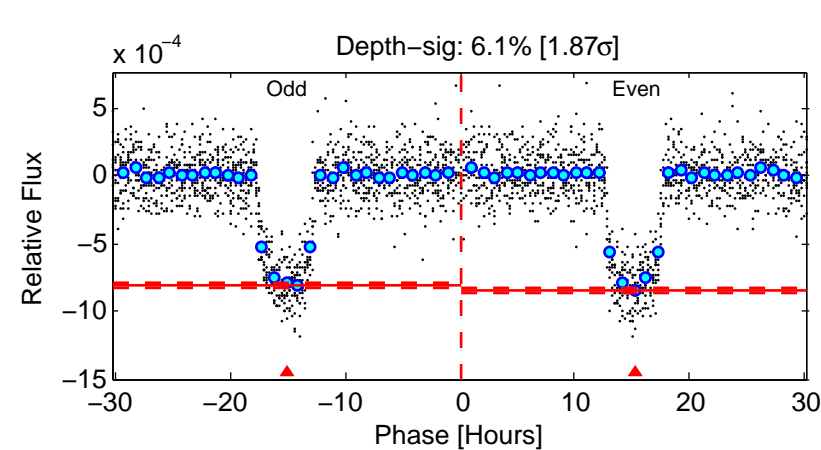
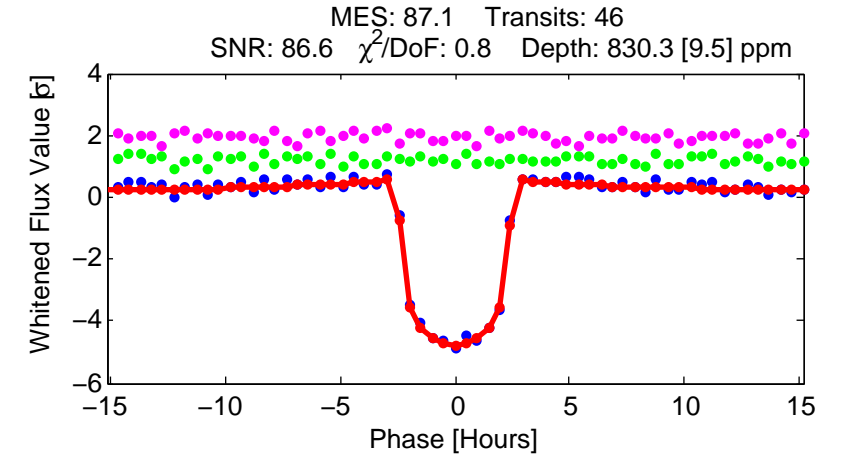
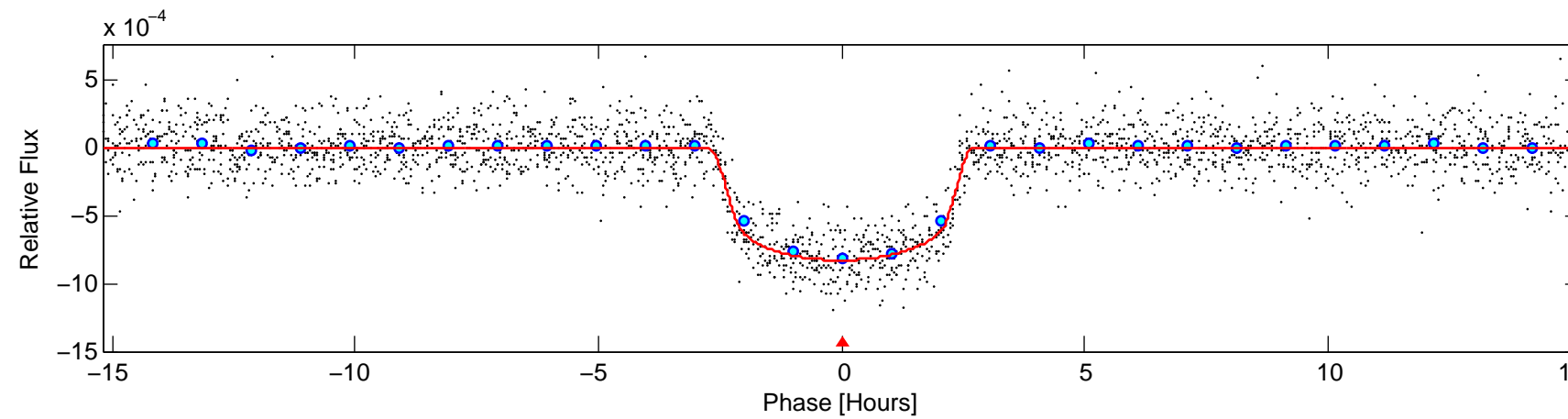
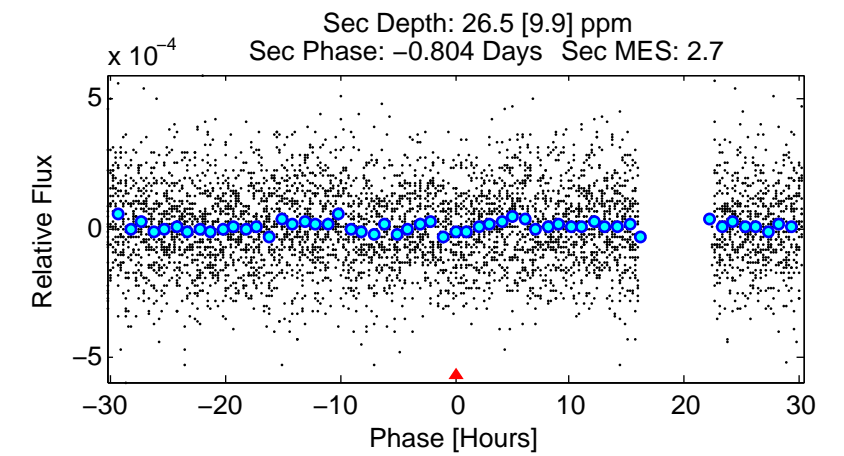
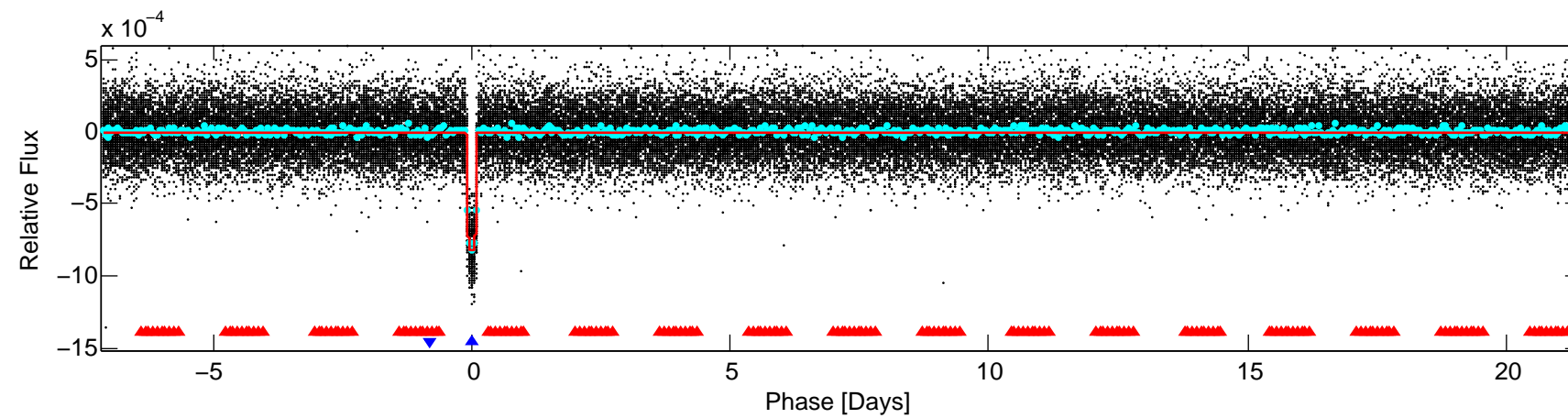
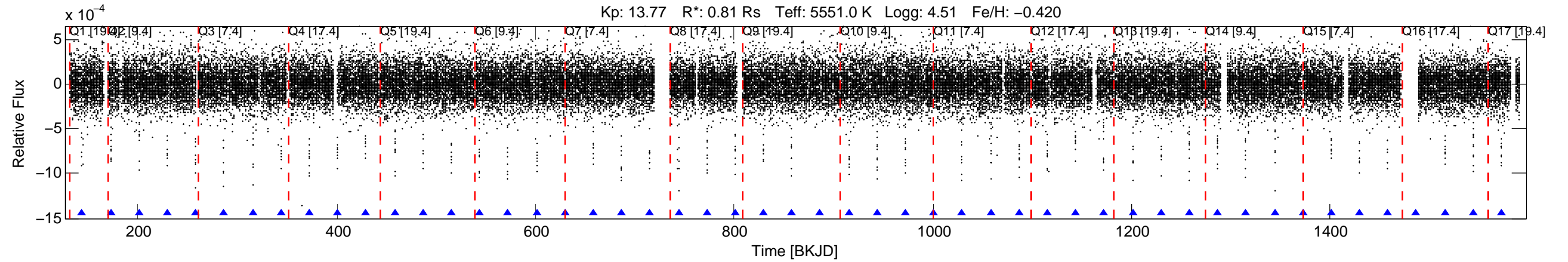


KIC: 7626506 Candidate: 2 of 2 Period: 28.574 d  
 KOI: K00150.02 Name: Kepler-112c Corr: 0.991



#### DV Fit Results:

Period = 28.57426 [0.00004] d  
 Epoch = 143.8317 [0.0011] BKJD  
 Rp/R\* = 0.0282 [0.0024]  
 a/R\* = 32.27 [11.93]  
 b = 0.70 [0.27]  
 Seff = 19.87 [3.06]  
 Teq = 538 [21] K  
 Rp = 2.50 [0.30] Re  
 a = 0.1680 [0.0139] AU  
 Ag = 65.79 [28.36] [2.28σ]  
 Teffp = 2370 [248] K [7.37σ]

#### DV Diagnostic Results:

ShortPeriod-sig: 100.0% [77.66σ]  
 LongPeriod-sig: N/A  
 ModelChiSquare2-sig: 84.9%  
 ModelChiSquareGof-sig: 100.0%  
 Bootstrap-pfa: 0.00e+00  
 RollingBand-fgt: 1.00 [44/44]  
 GhostDiagnostic-chr: 25.18  
**Centroid-sig: 0.0%**  
 Centroid-so: 0.267 arcsec [1.92σ]  
 OotOffset-rm: 0.098 arcsec [0.79σ]  
 KicOffset-rm: 0.285 arcsec [2.29σ]  
 OotOffset-st: 4/4/4/5 [17]  
 KicOffset-st: 4/4/4/5 [17]  
 DiffImageQuality-fgm: 1.00 [17/17]  
 DiffImageOverlap-fno: 1.00 [17/17]