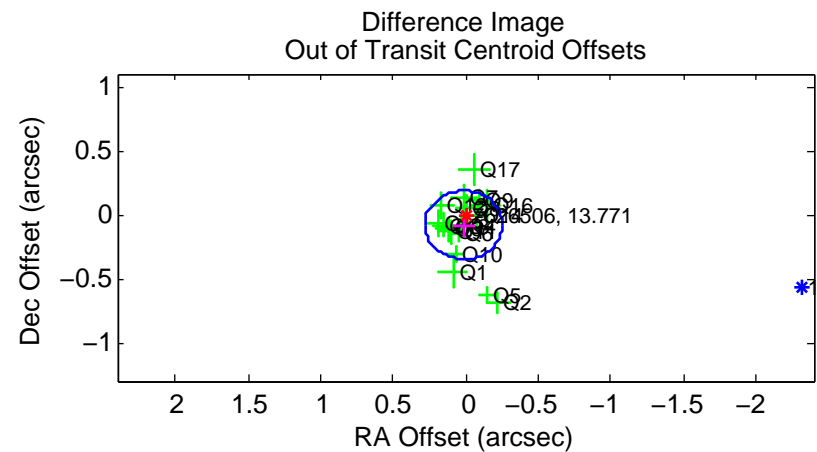
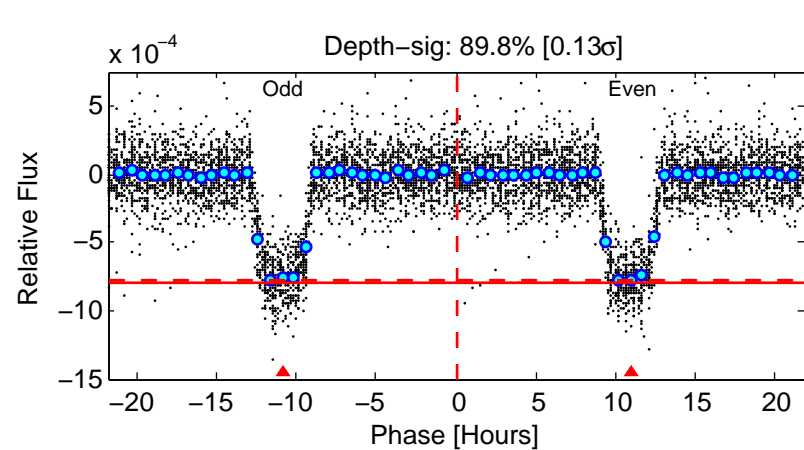
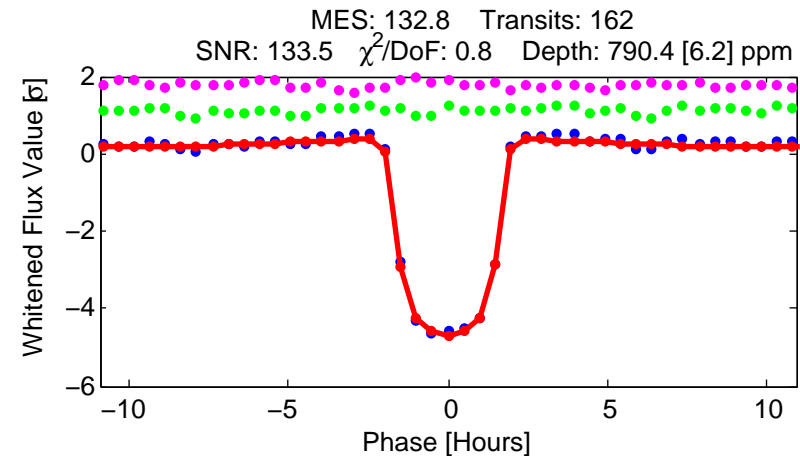
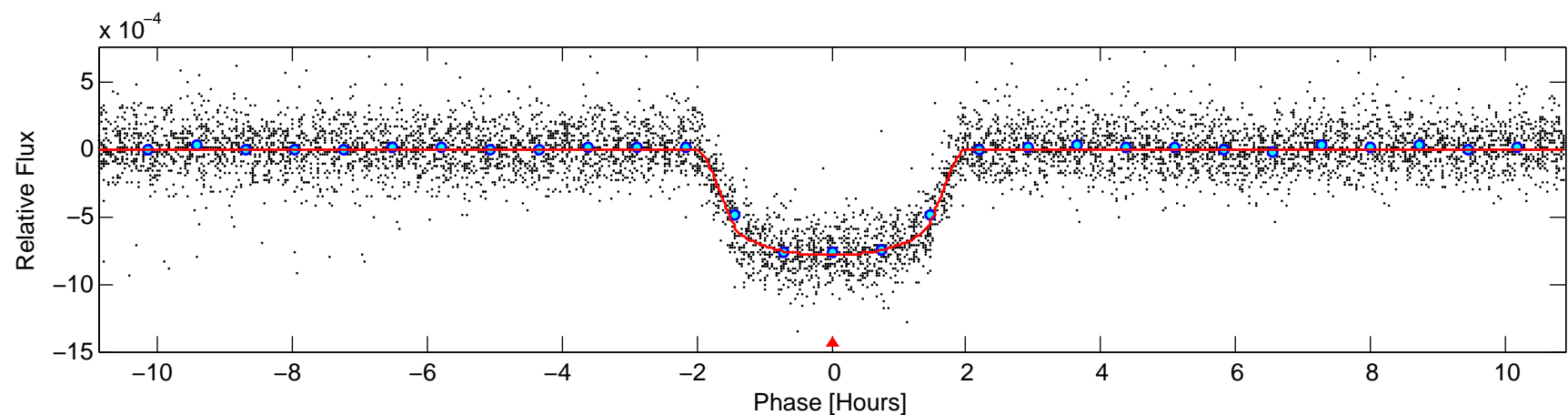
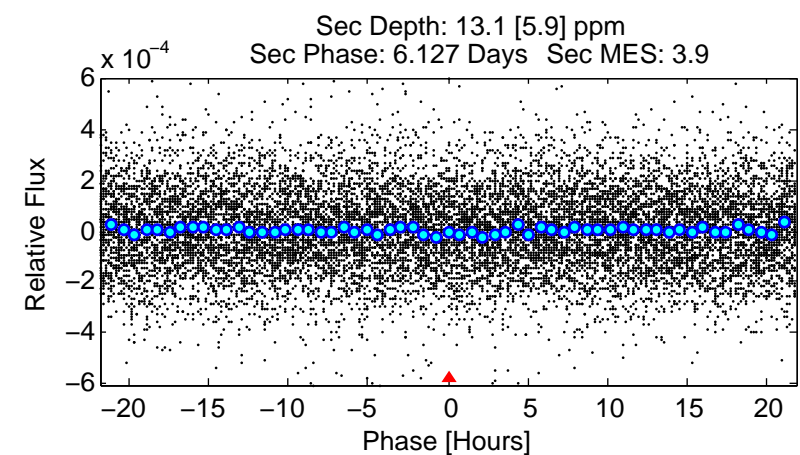
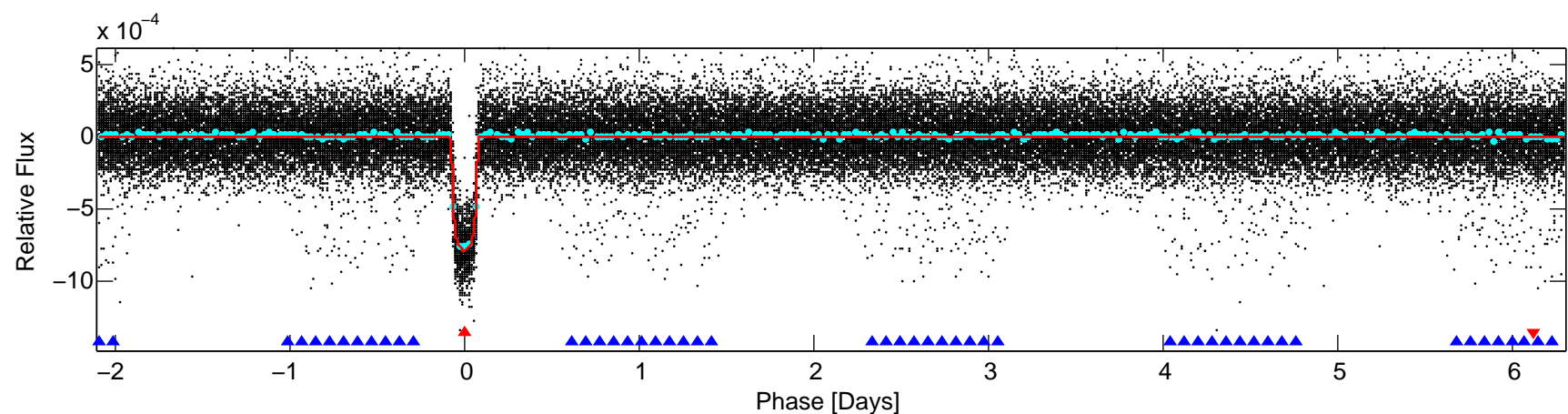
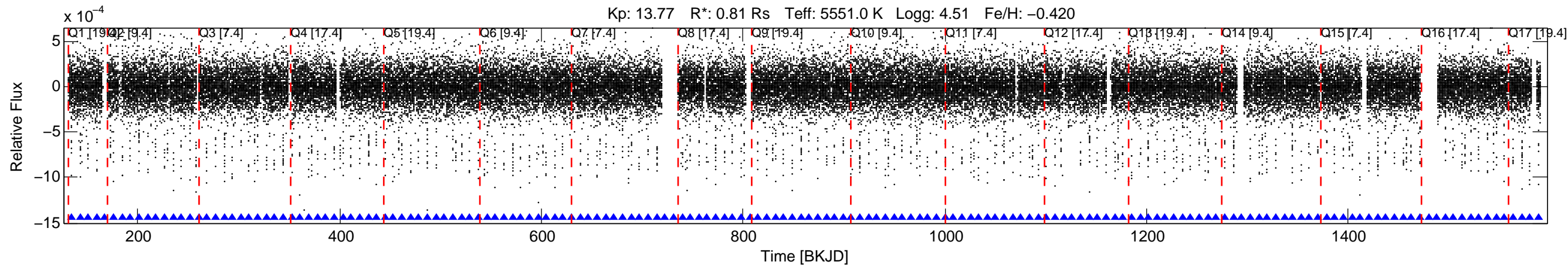


KIC: 7626506 Candidate: 1 of 2 Period: 8.409 d
 KOI: K00150.01 Name: Kepler-112b Corr: 0.981



DV Fit Results:

Period = 8.40887 [0.00001] d
 Epoch = 134.0069 [0.0005] BKJD
 Rp/R* = 0.0283 [0.0015]
 a/R* = 12.03 [2.74]
 b = 0.77 [0.12]
 Seff = 101.49 [15.62]
 Teff = 809 [31] K
 Rp = 2.50 [0.25] Re
 a = 0.0743 [0.0061] AU
 Ag = 6.36 [3.03] [1.77σ]
 Teffp = 1987 [231] K [5.05σ]

DV Diagnostic Results:

ShortPeriod-sig: N/A
 LongPeriod-sig: 100.0% [77.66σ]
 ModelChiSquare2-sig: 99.4%
 ModelChiSquareGof-sig: 100.0%
 Bootstrap-pfa: 0.00e+00
 RollingBand-fgt: 1.00 [154/154]
 GhostDiagnostic-chr: 7.982
 Centroid-sig: 0.0%
 Centroid-so: 0.393 arcsec [4.10σ]
 OotOffset-rm: 0.084 arcsec [0.94σ]
 KicOffset-rm: 0.294 arcsec [3.78σ]
 OotOffset-st: 4/4/4/5 [17]
 KicOffset-st: 4/4/4/5 [17]
 DiffImageQuality-fgm: 1.00 [17/17]
 DiffImageOverlap-fno: 1.00 [17/17]