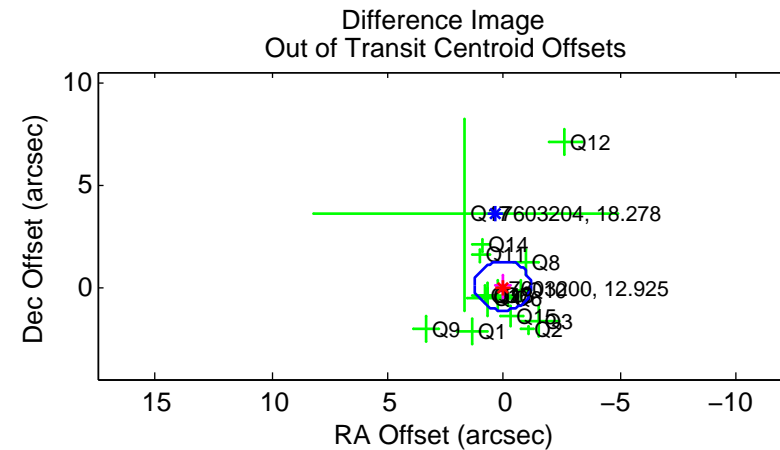
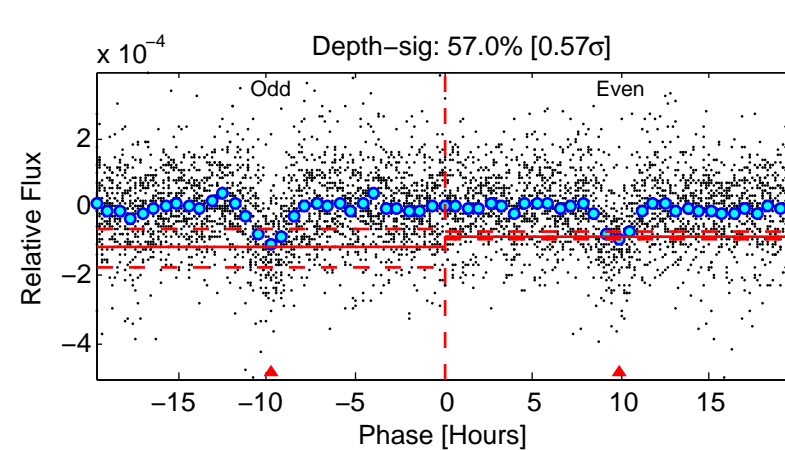
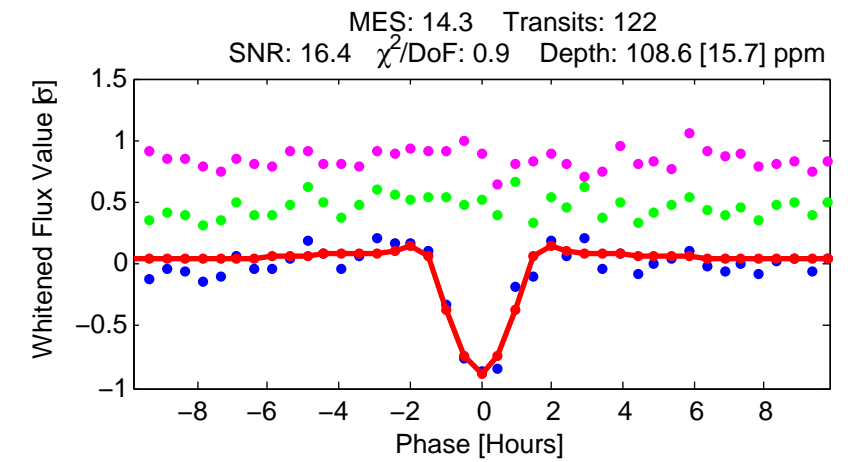
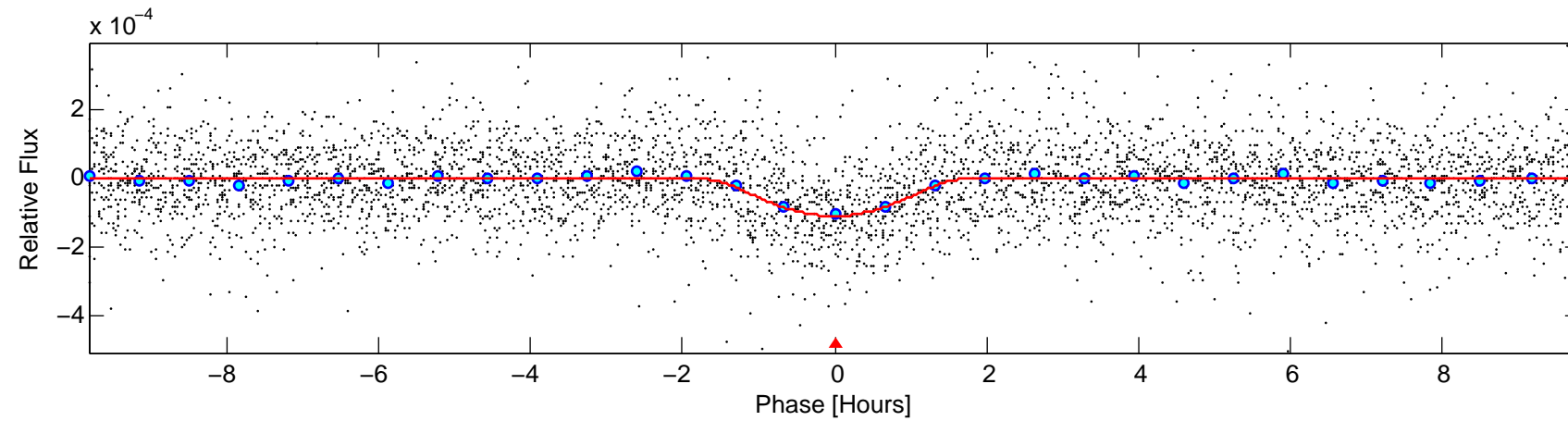
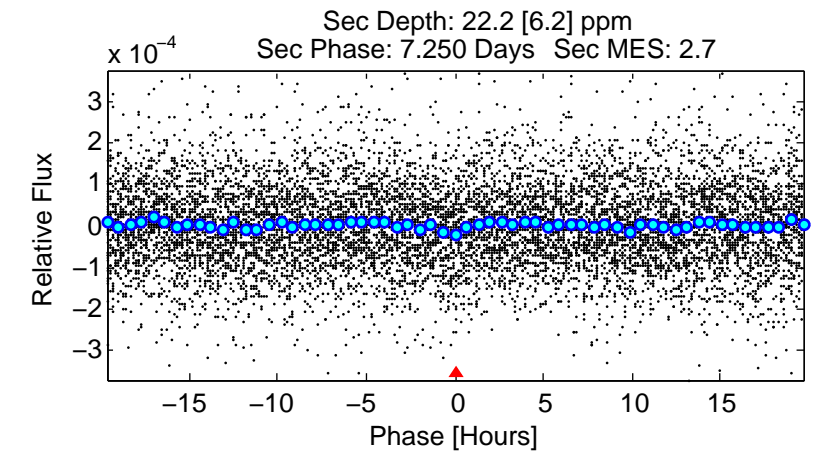
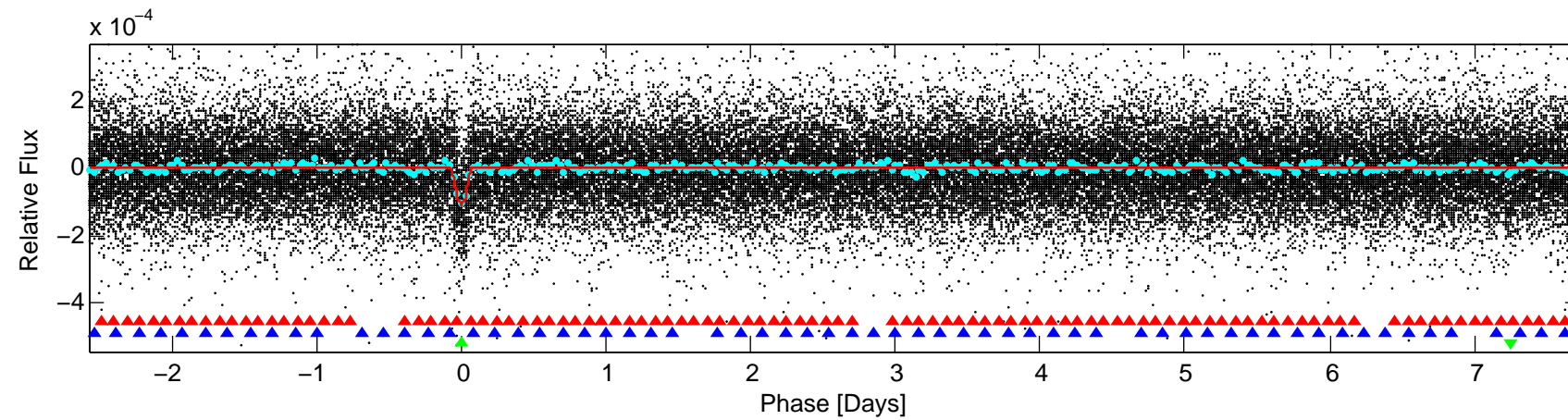
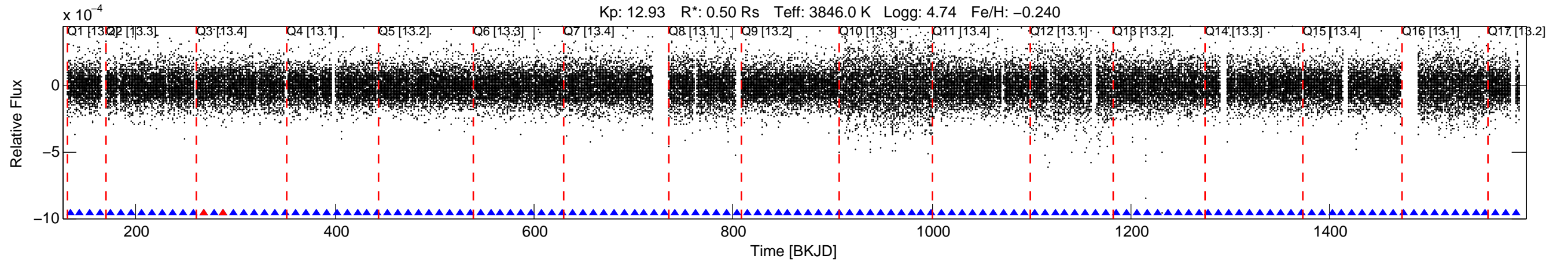


KIC: 7603200 Candidate: 3 of 3 Period: 10.313 d
 KOI: K00314.03 Name: Kepler-138b Corr: 0.811



DV Fit Results:

Period = 10.31309 [0.00005] d
 Epoch = 133.5242 [0.0039] BKJD
 Rp/R* = 0.0200 [0.0380]
 a/R* = 5.03 [2.50]
 b = 1.00 [0.06]
 Seff = 9.09 [1.22]
 Teq = 443 [15] K
 Rp = 1.10 [2.09] Re
 a = 0.0738 [0.0055] AU
 Ag = 55.36 [211.22] [0.26σ]
 Teffp = 1867 [1781] K [0.80σ]

DV Diagnostic Results:

ShortPeriod-sig: N/A
 LongPeriod-sig: 100.0% [20.29σ]
 ModelChiSquare2-sig: 100.0%
 ModelChiSquareGof-sig: 100.0%
 Bootstrap-pfa: 1.04e-42
 RollingBand-fgt: 0.98 [113/115]
 GhostDiagnostic-chr: 3.068
 Centroid-sig: 24.4%
 Centroid-so: 0.883 arcsec [1.39σ]
 OotOffset-rm: 0.055 arcsec [0.14σ]
 KicOffset-rm: 0.235 arcsec [0.40σ]
 OotOffset-st: 4/4/4/4 [16]
 KicOffset-st: 4/4/4/4 [16]
 DiffImageQuality-fgm: 0.81 [13/16]
 DiffImageOverlap-fno: 1.00 [17/17]